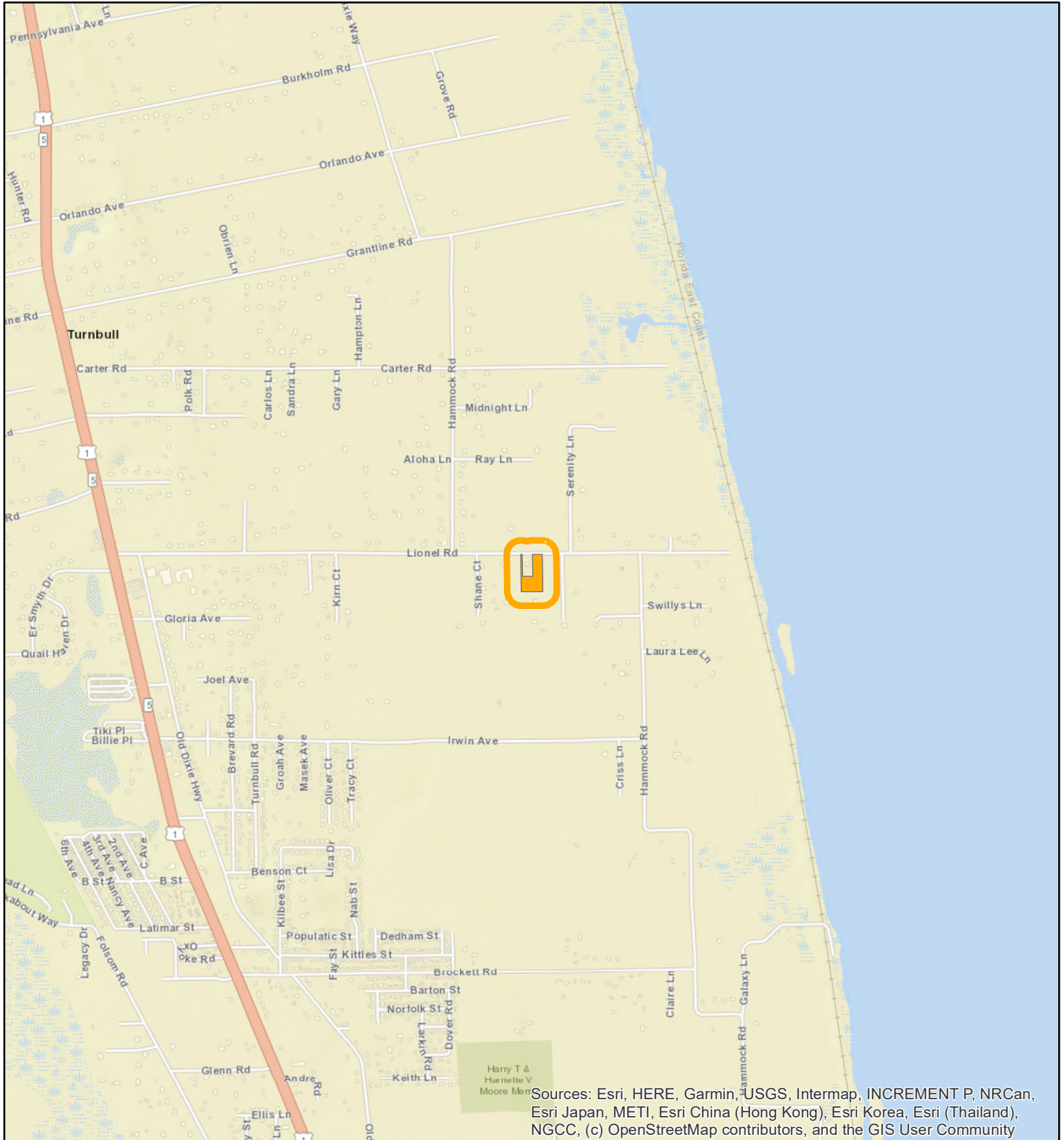


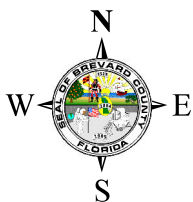
LOCATION MAP

DAHN, THOMAS

25V00047



Sources: Esri, HERE, Garmin, USGS, Intermap, INCREMENT P, NRCan, Esri Japan, METI, Esri China (Hong Kong), Esri Korea, Esri (Thailand), NGCC, (c) OpenStreetMap contributors, and the GIS User Community



1:24,000 or 1 inch = 2,000 feet

Buffer Distance: 200 feet

This map was compiled from recorded documents and does not reflect an actual survey. The Brevard County Board of County Commissioners does not assume responsibility for errors or omissions hereon.

Produced by BoCC - GIS Date: 8/7/2025

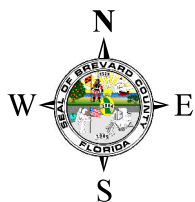
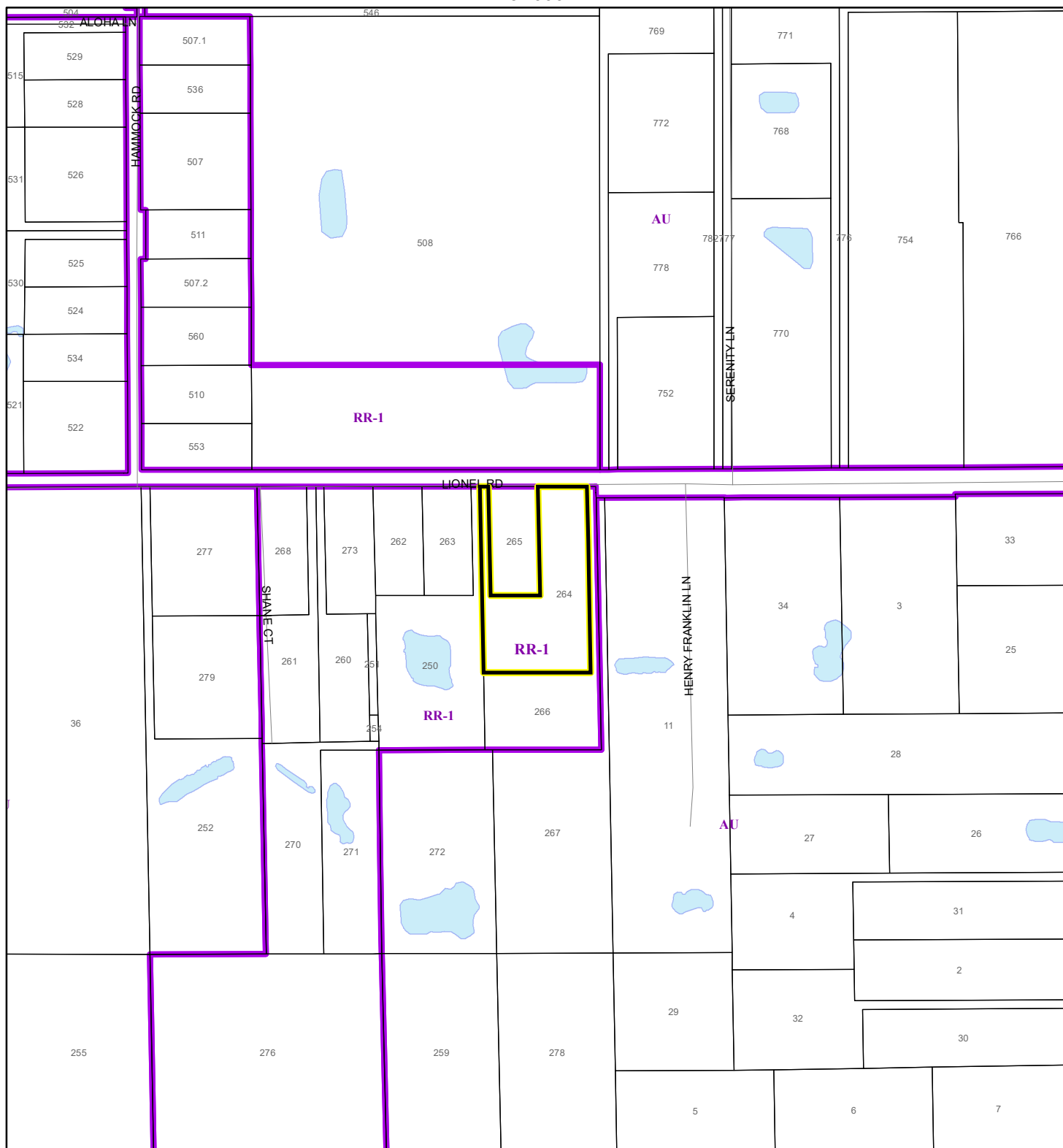
 Buffer

 Subject Property

ZONING MAP

DAHN, THOMAS


25V00047



1:4,800 or 1 inch = 400 feet

This map was compiled from recorded documents and does not reflect an actual survey. The Brevard County Board of County Commissioners does not assume responsibility for errors or omissions hereon.

Produced by BoCC - GIS Date: 8/7/2025

 Subject Property

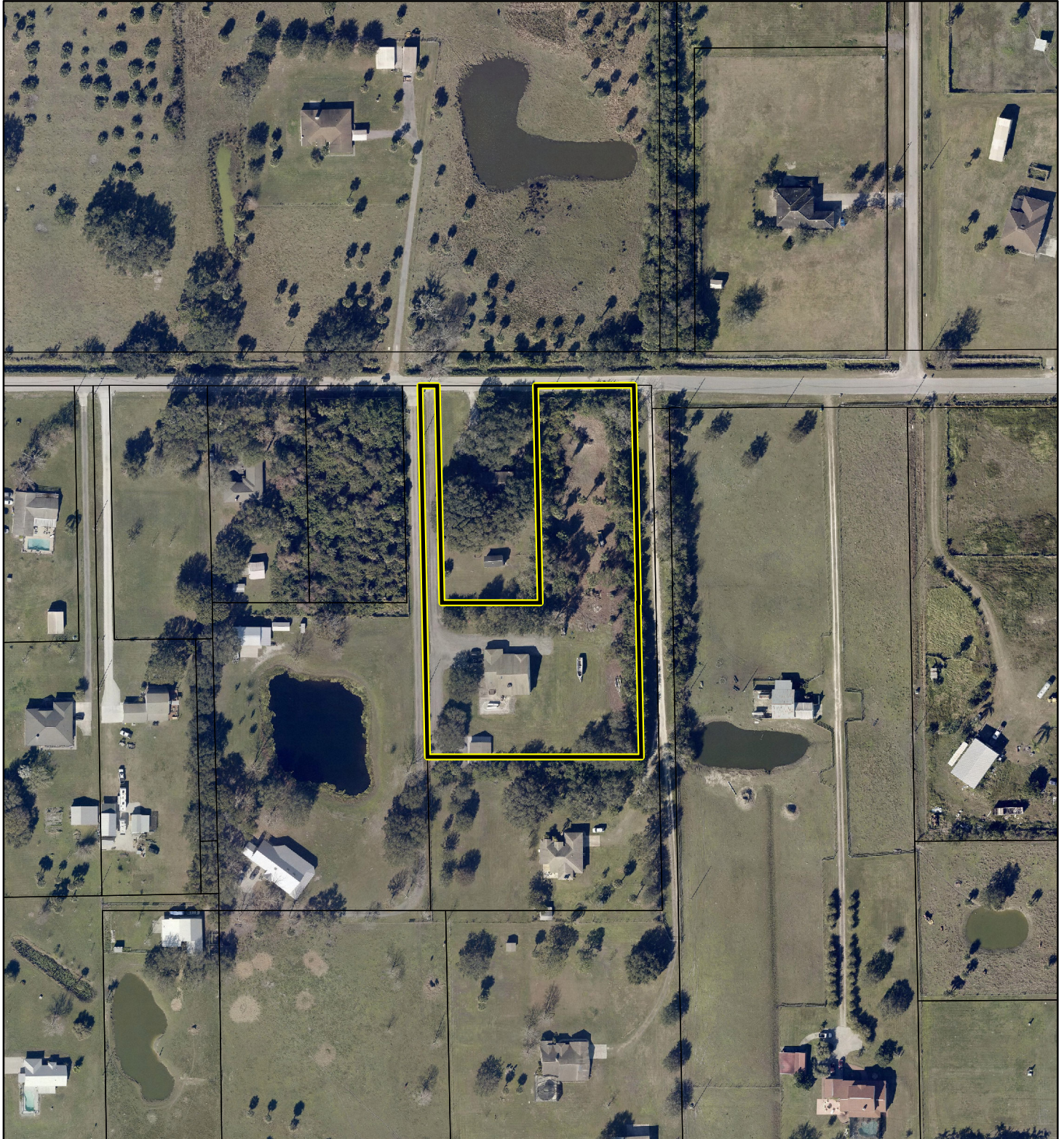
 Parcels

 Zoning

AERIAL MAP

DAHN, THOMAS

25V00047




1:2,400 or 1 inch = 200 feet

PHOTO YEAR: 2025

This map was compiled from recorded documents and does not reflect an actual survey. The Brevard County Board of County Commissioners does not assume responsibility for errors or omissions hereon.

Produced by BoCC - GIS Date: 8/7/2025

 Subject Property

 Parcels