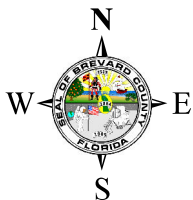
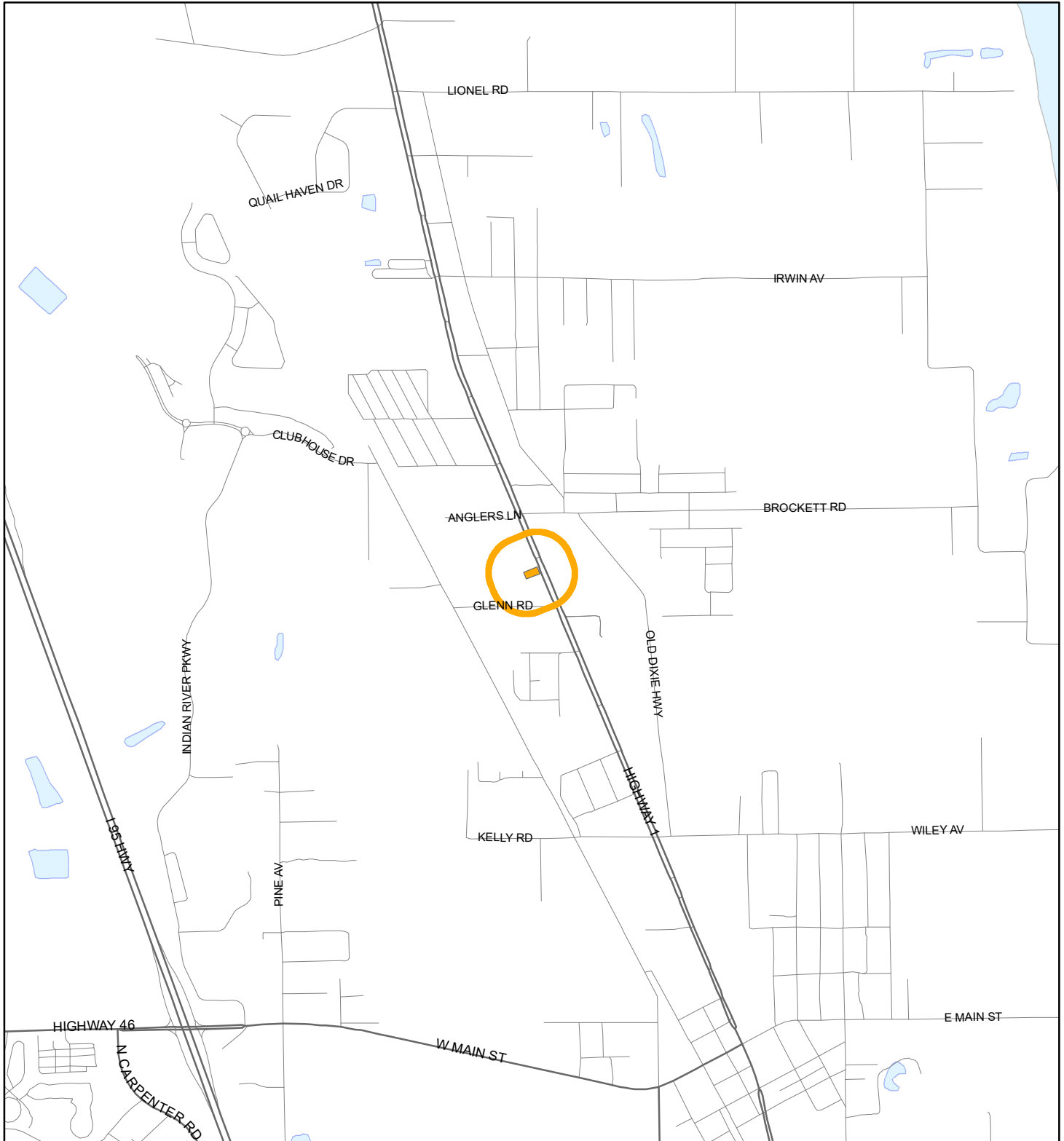


LOCATION MAP

MINNICK, SCOTT

21Z00026





1:24,000 or 1 inch = 2,000 feet

Buffer Distance: 500 feet

This map was compiled from recorded documents and does not reflect an actual survey. The Brevard County Board of County Commissioners does not assume responsibility for errors or omissions hereon.

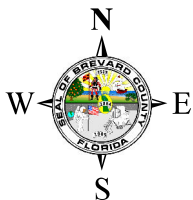
Produced by BoCC - GIS Date: 8/23/2021

 Buffer
 Subject Property

ZONING MAP

MINNICK, SCOTT


21Z00026



1:4,800 or 1 inch = 400 feet

This map was compiled from recorded documents and does not reflect an actual survey. The Brevard County Board of County Commissioners does not assume responsibility for errors or omissions hereon.

Produced by BoCC - GIS Date: 8/23/2021

 Subject Property

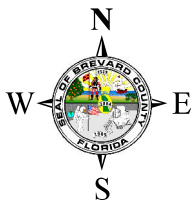
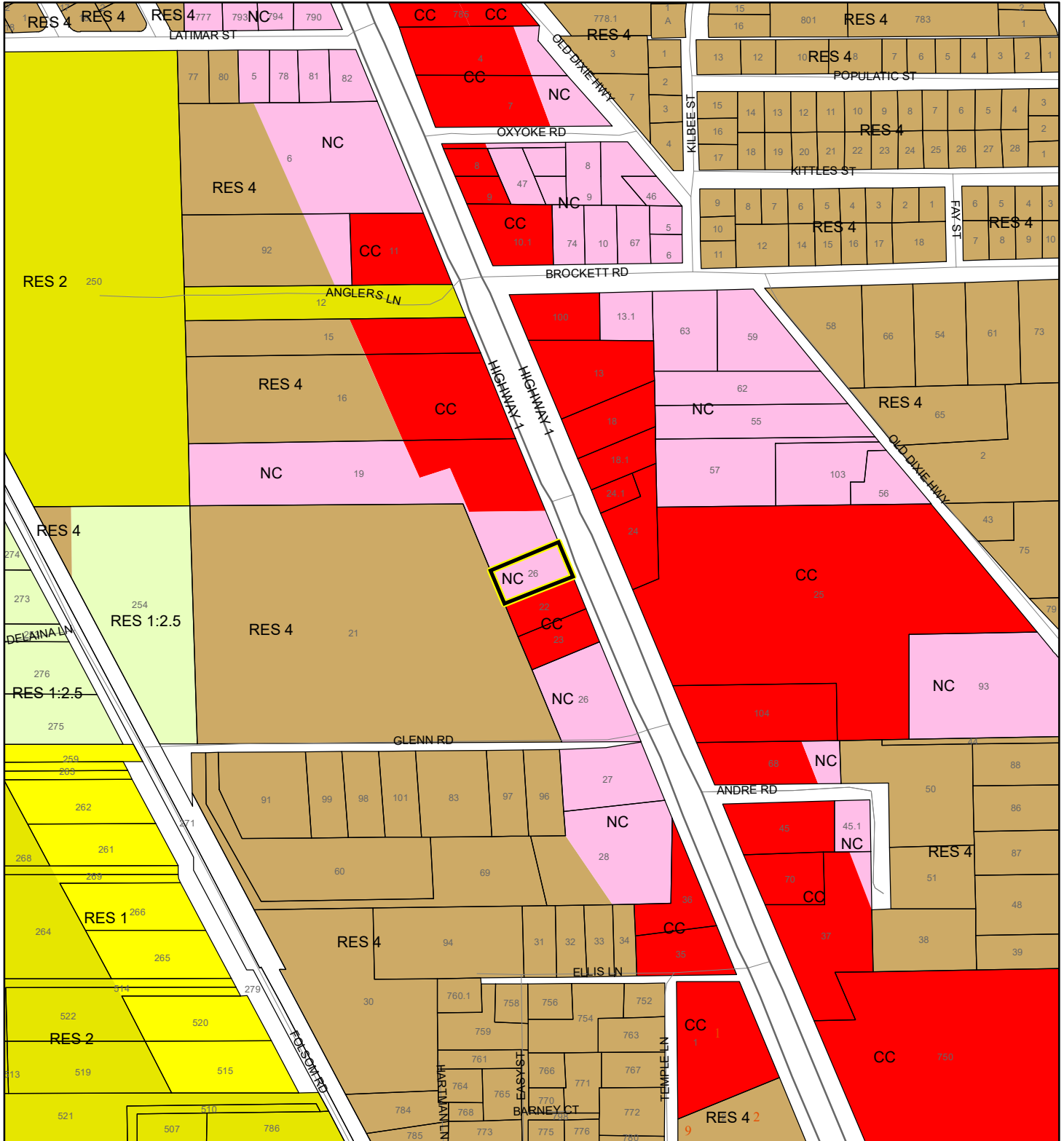
 Parcels

 Zoning

FUTURE LAND USE MAP

MINNICK, SCOTT

21Z00026



1:4,800 or 1 inch = 400 feet

Subject Property
Parcels

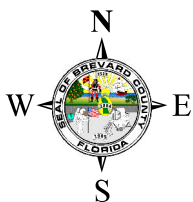
This map was compiled from recorded documents and does not reflect an actual survey. The Brevard County Board of County Commissioners does not assume responsibility for errors or omissions hereon.

Produced by BoCC - GIS Date: 8/23/2021

AERIAL MAP

MINNICK, SCOTT

21Z00026




1:2,400 or 1 inch = 200 feet

PHOTO YEAR: 2021

This map was compiled from recorded documents and does not reflect an actual survey. The Brevard County Board of County Commissioners does not assume responsibility for errors or omissions hereon.

Produced by BoCC - GIS Date: 8/23/2021

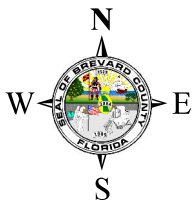
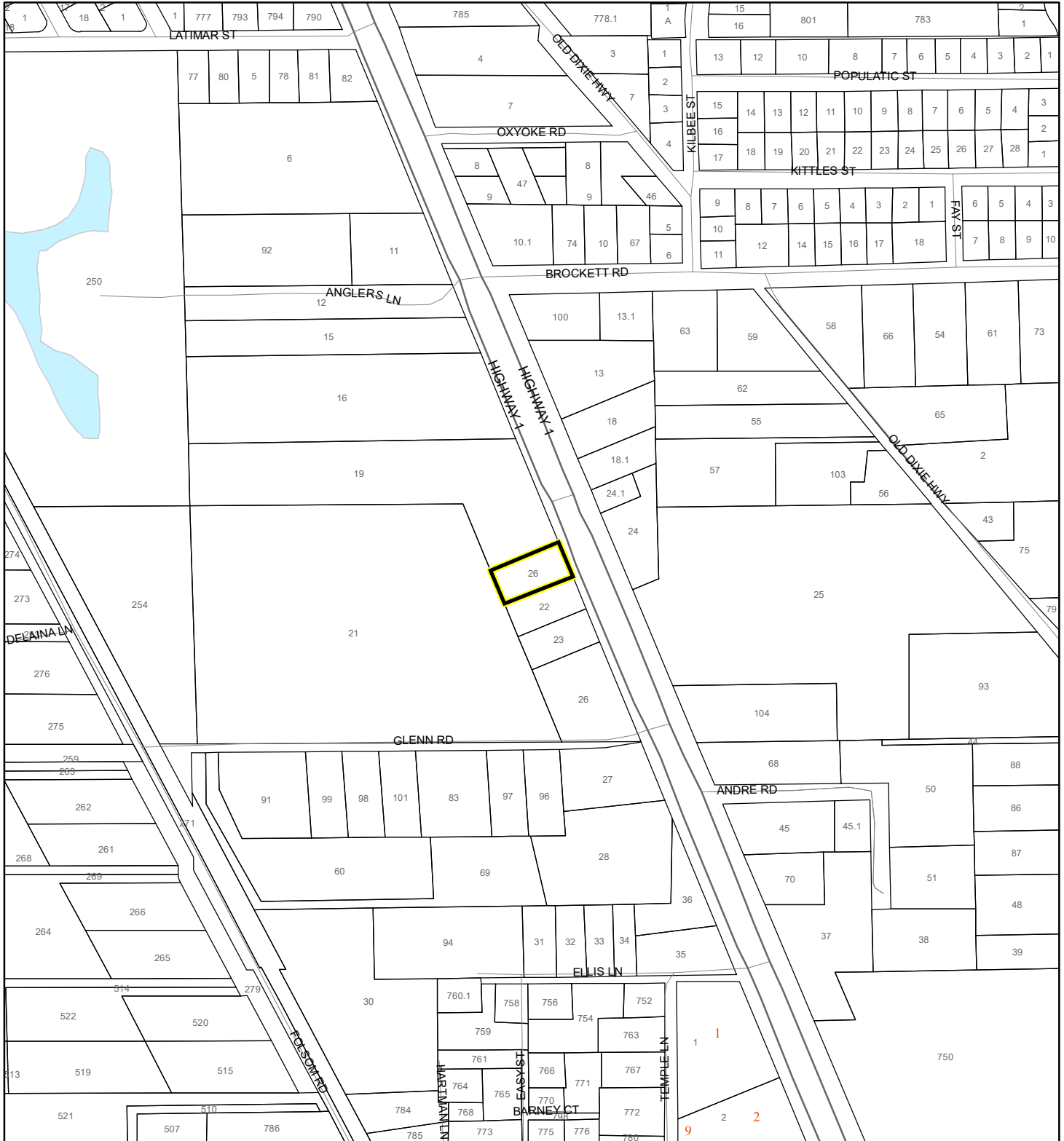
 Subject Property

 Parcels

NWI WETLANDS MAP

MINNICK, SCOTT

21Z00026






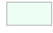

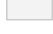




1:4,800 or 1 inch = 400 feet

This map was compiled from recorded documents and does not reflect an actual survey. The Brevard County Board of County Commissioners does not assume responsibility for errors or omissions hereon.

Produced by BoCC - GIS Date: 8/23/2021

National Wetlands Inventory (NWI)

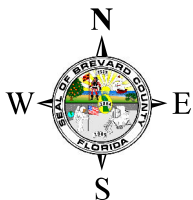
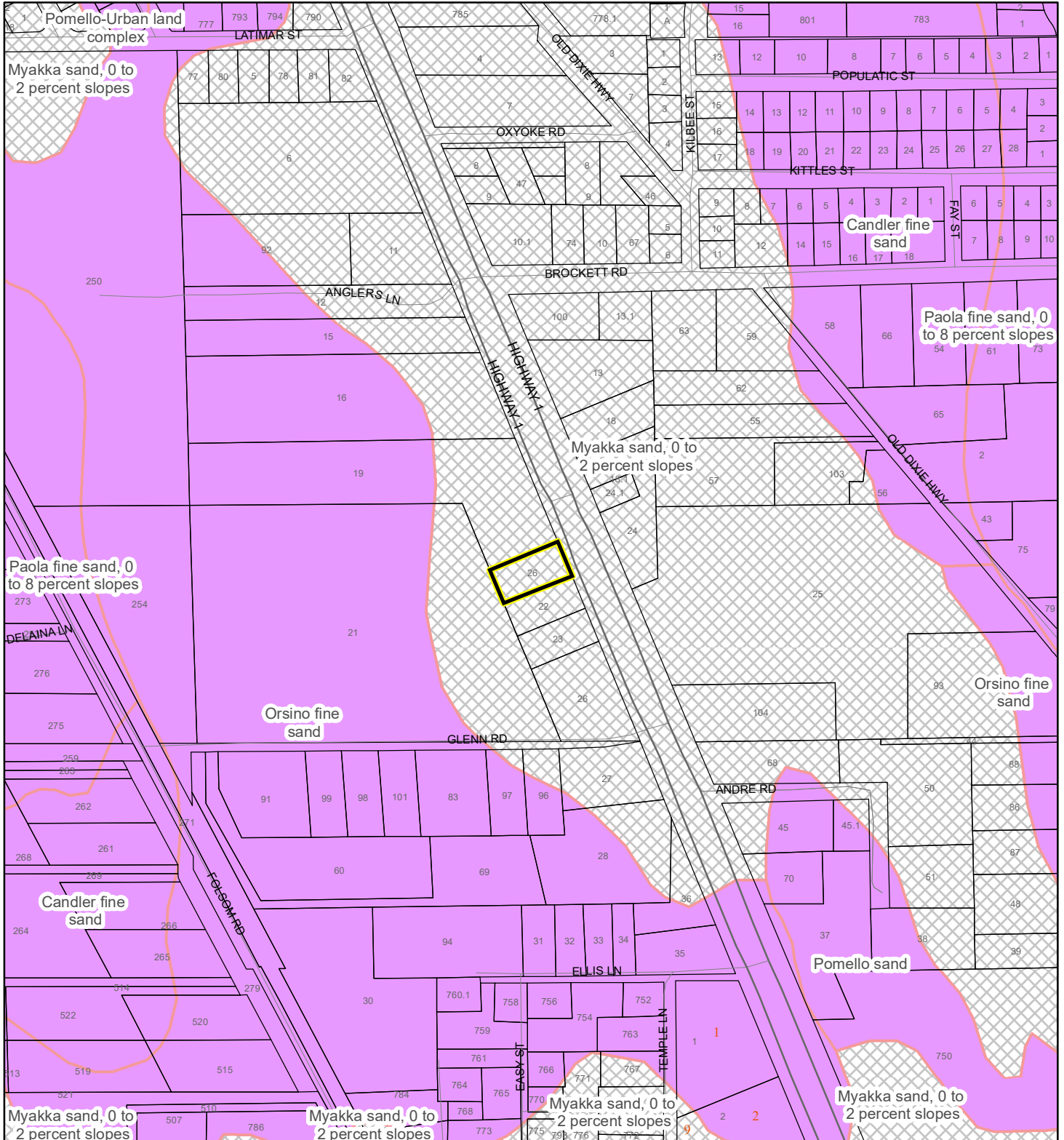
	Estuarine and Marine Deepwater		Freshwater Pond
	Estuarine and Marine Wetland		Lake
	Freshwater Emergent Wetland		Other
	Freshwater Forested/Shrub Wetland		Riverine
	Subject Property		Parcels

☐ Parcels

USDA SCSSS SOILS MAP

MINNICK, SCOTT

21Z00026



1:4,800 or 1 inch = 400 feet

This map was compiled from recorded documents and does not reflect an actual survey. The Brevard County Board of County Commissioners does not assume responsibility for errors or omissions hereon.

Produced by BoCC - GIS Date: 8/23/2021

USDA SCSSS Soils

Aquifer and Hydric

Aquifer

Hydric

None

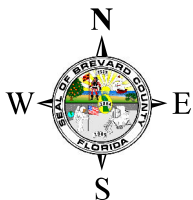
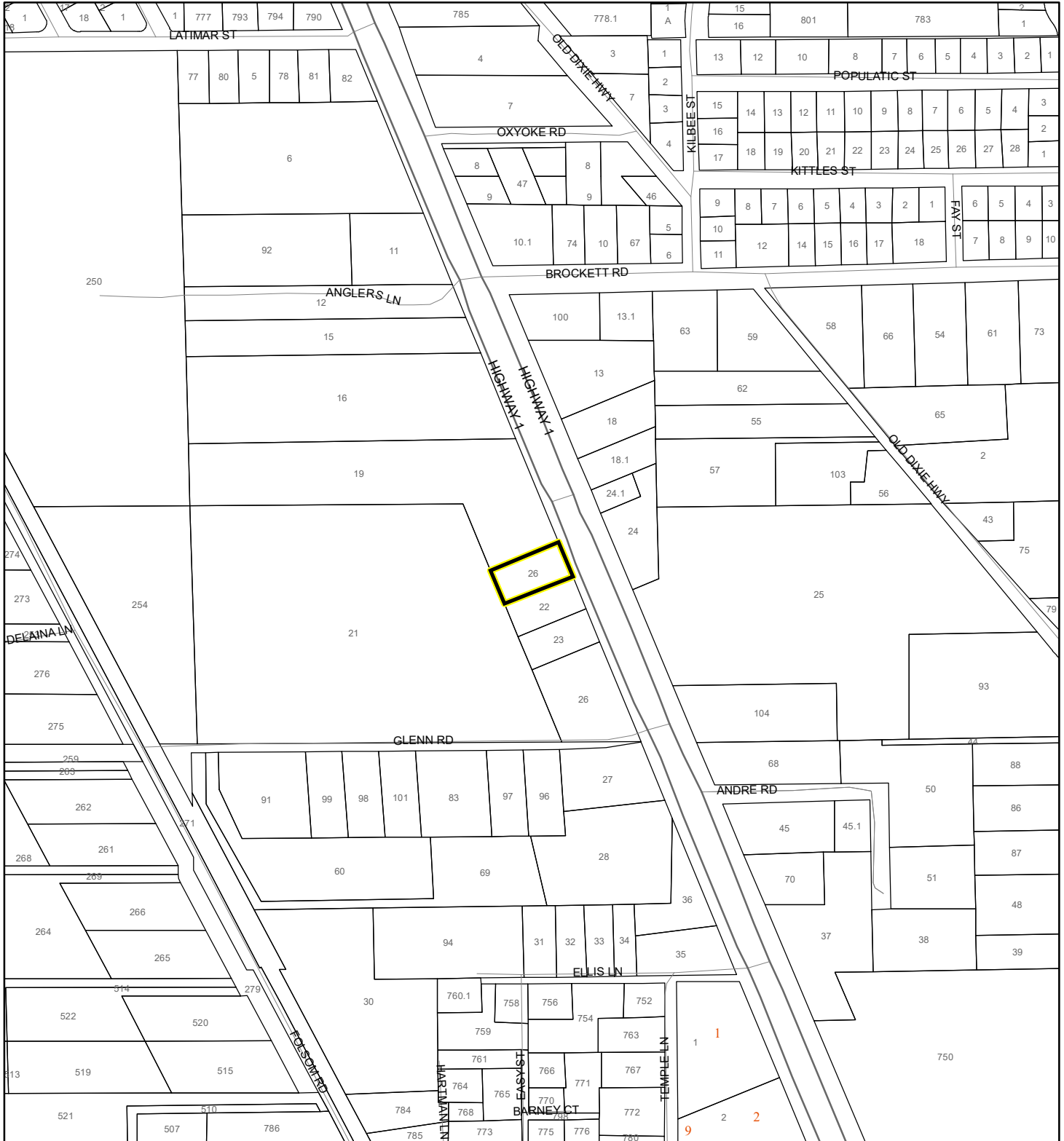
Subject Property

Parcels

FEMA FLOOD ZONES MAP

MINNICK, SCOTT

21Z00026



1:4,800 or 1 inch = 400 feet

This map was compiled from recorded documents and does not reflect an actual survey. The Brevard County Board of County Commissioners does not assume responsibility for errors or omissions hereon.

Produced by BoCC - GIS Date: 8/23/2021

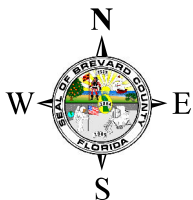
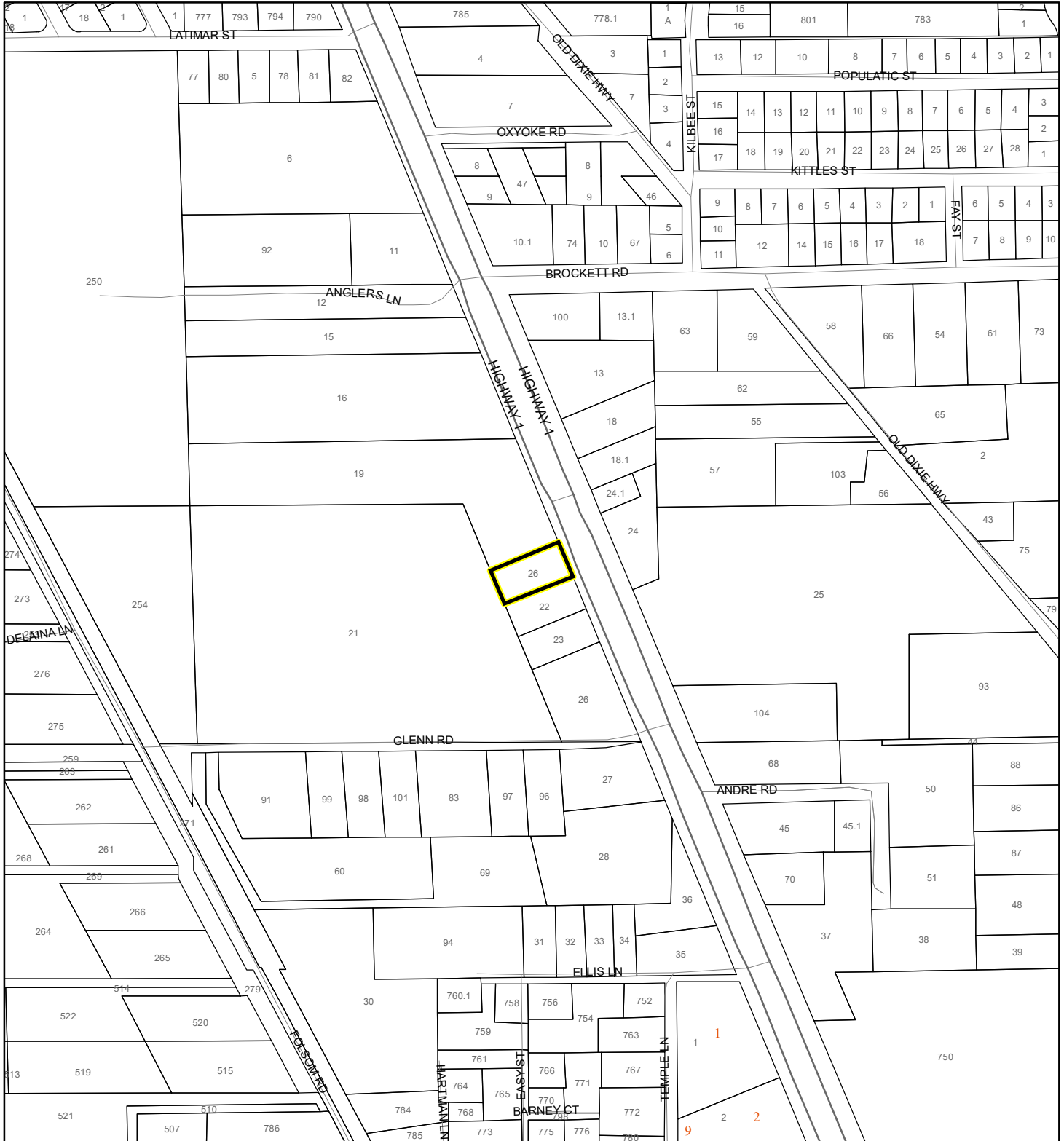
FEMA Flood Zones

- | | | |
|--|--|---|
| A | AO | X |
| AE | Open Water | |
| AH | VE | |
| Subject Property | Parcels | |

COASTAL HIGH HAZARD AREA MAP

MINNICK, SCOTT

21Z00026



1:4,800 or 1 inch = 400 feet


This map was compiled from recorded documents and does not reflect an actual survey. The Brevard County Board of County Commissioners does not assume responsibility for errors or omissions hereon.

Produced by BoCC - GIS Date: 8/23/2021

 Subject Property

 Parcels

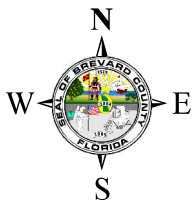
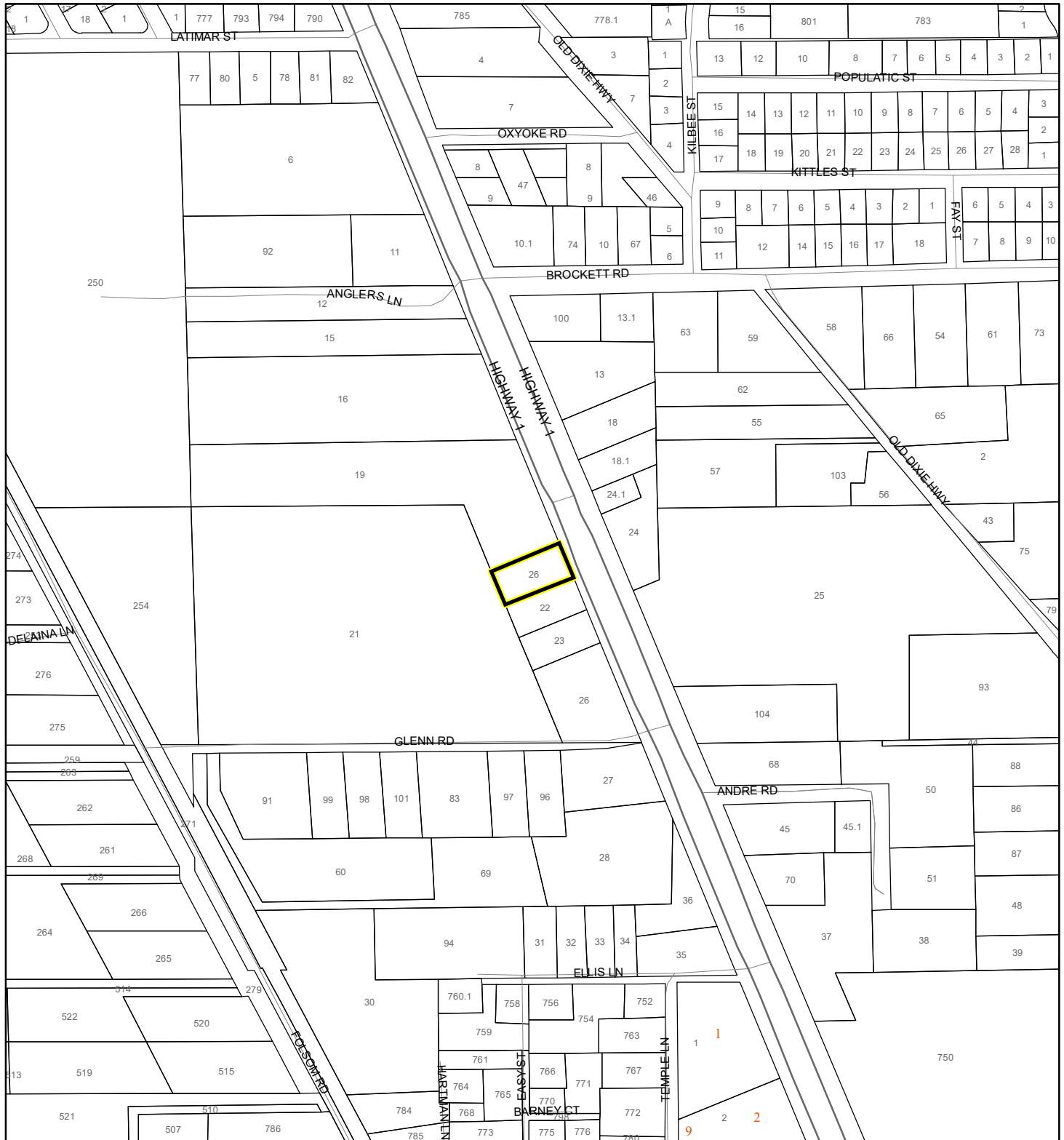
Coastal High Hazard Area

 SurgeZoneCat1

INDIAN RIVER LAGOON SEPTIC OVERLAY MAP

MINNICK, SCOTT

21Z00026



1:4,800 or 1 inch = 400 feet

This map was compiled from recorded documents and does not reflect an actual survey. The Brevard County Board of County Commissioners does not assume responsibility for errors or omissions hereon.

Produced by BoCC - GIS Date: 8/23/2021

 Subject Property

 Parcels

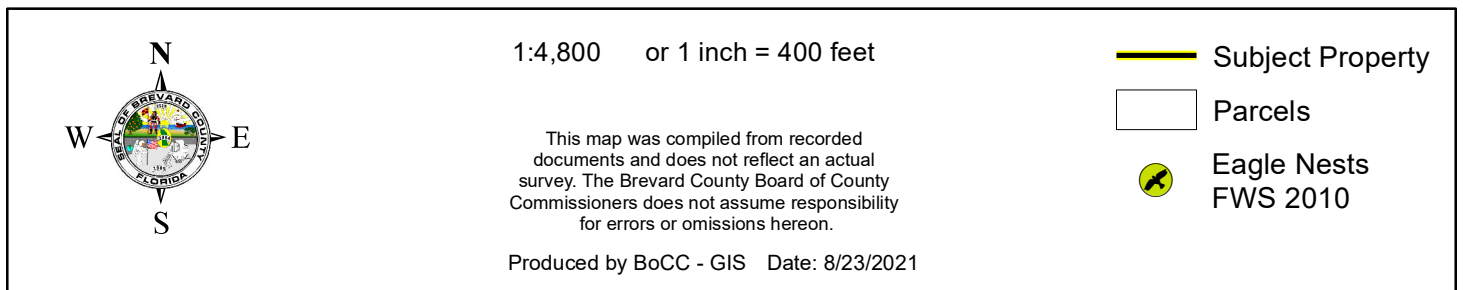
Septic Overlay

 40 Meters

 60 Meters

 All Distances

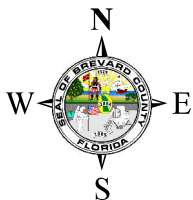
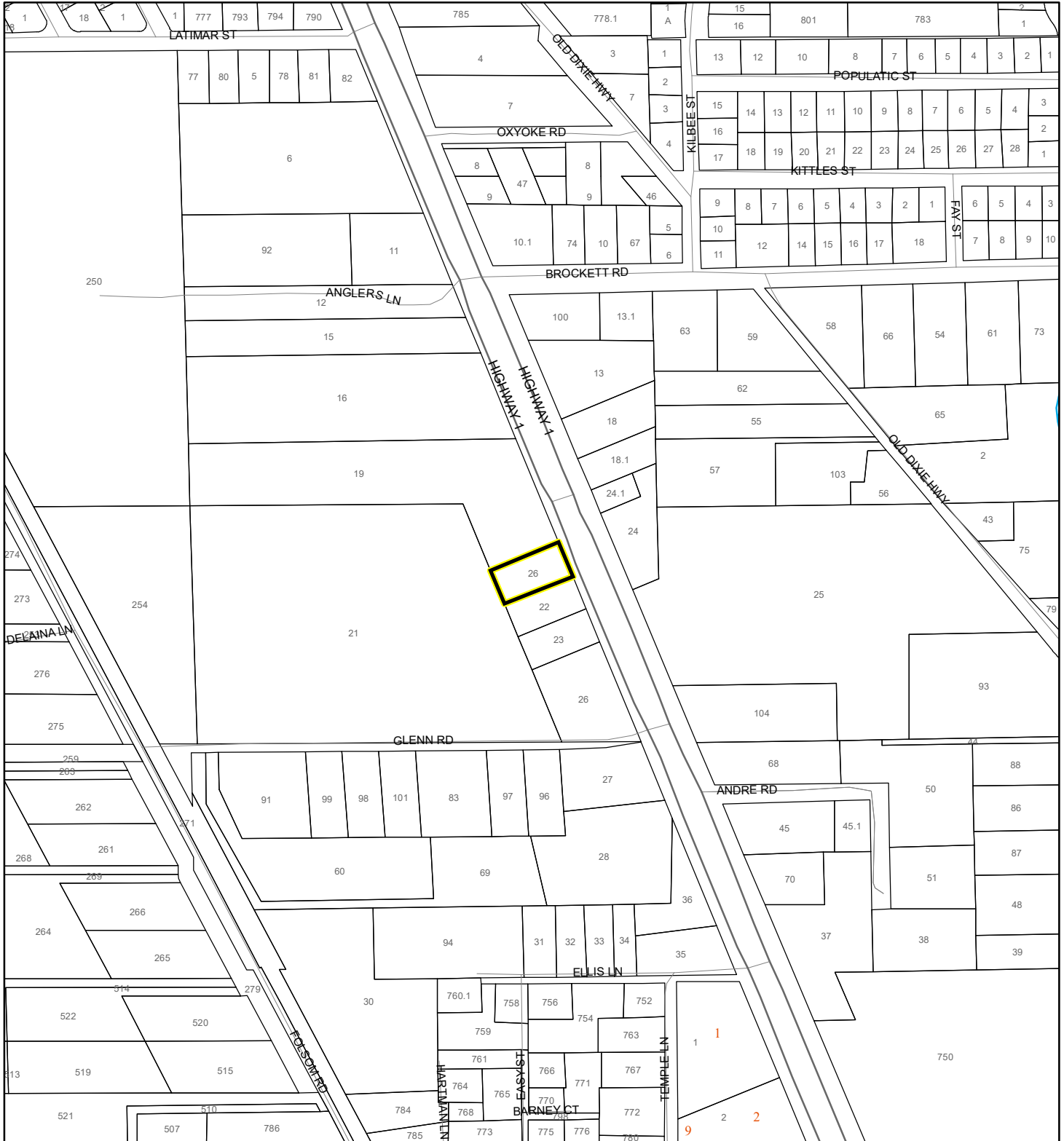
MINNICK, SCOTT
21Z00026



SCRUB JAY OCCUPANCY MAP

MINNICK, SCOTT

21Z00026



1:4,800 or 1 inch = 400 feet

This map was compiled from recorded documents and does not reflect an actual survey. The Brevard County Board of County Commissioners does not assume responsibility for errors or omissions hereon.

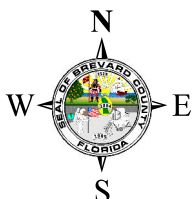
Produced by BoCC - GIS Date: 8/23/2021

- Subject Property
- Parcels
- Scrub Jay Occupancy

SJRWMD FLUCCS UPLAND FORESTS - 4000 Series MAP

MINNICK, SCOTT

21Z00026



1:4,800 or 1 inch = 400 feet

This map was compiled from recorded documents and does not reflect an actual survey. The Brevard County Board of County Commissioners does not assume responsibility for errors or omissions hereon.

Produced by BoCC - GIS Date: 8/23/2021

SJRWMD FLUCCS Upland Forests

- Upland Coniferous Forest - 4100 Series
- Upland Hardwood Forest - 4200 Series
- Upland Mixed Forest - 4300 Series
- Tree Plantations - 4400 Series

Subject Property

Parcels