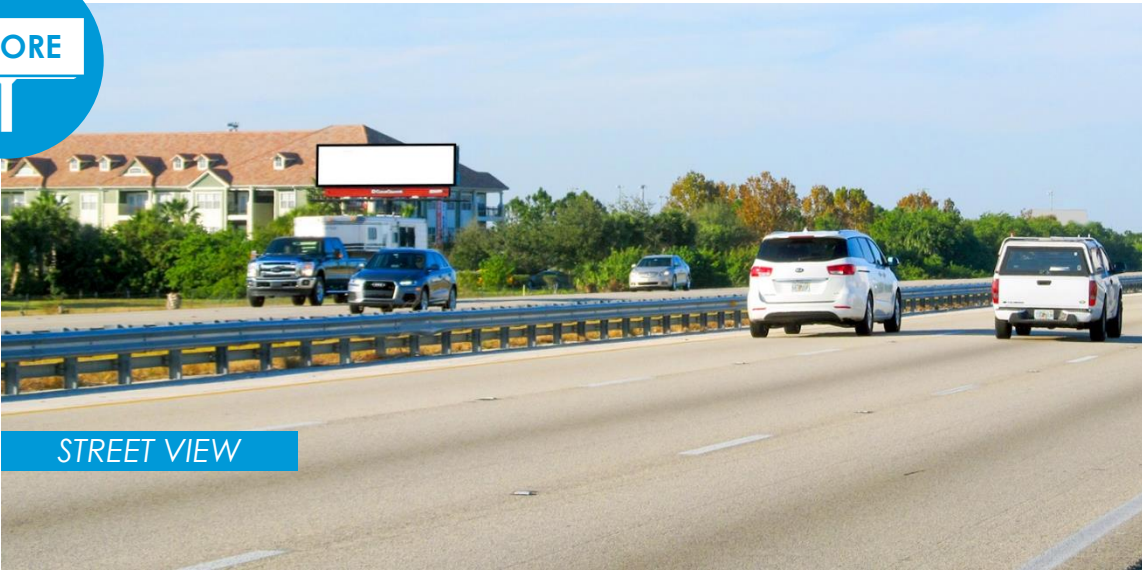
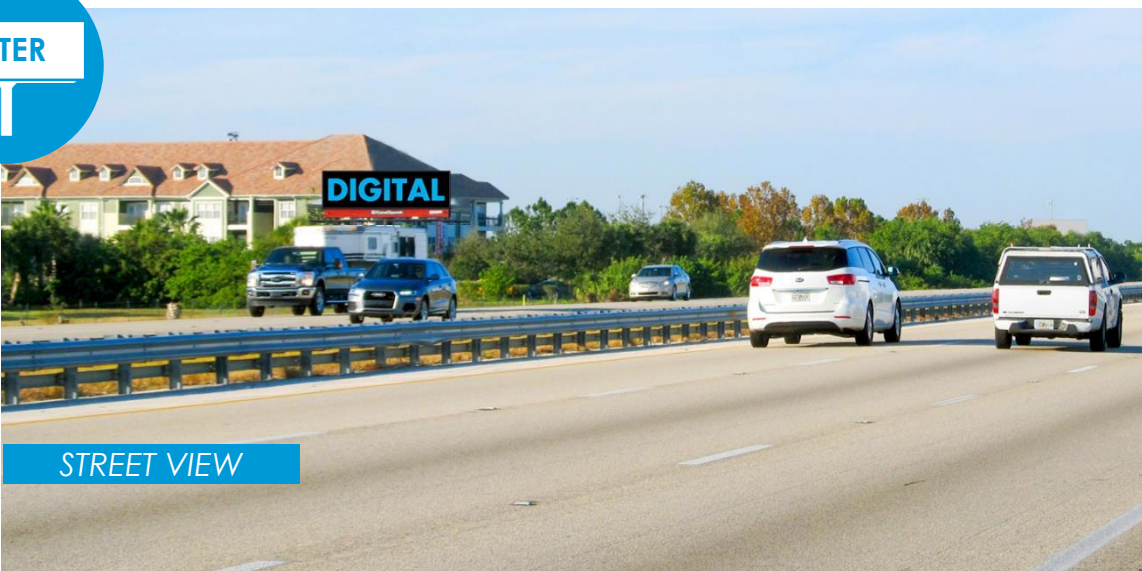


BEFORE



AFTER



#005450

I-95 WS 1.1mi N/O Wickham Rd F/S

Currently

Media Type **Printed Bulletin**
Board Size **10'6" x 36'**
Overall Height **40'6"**

Setbacks to Property Line will Remain the Same

Converted

Media Type **Digital Bulletin**
Board Size **10'6" x 36'**
Overall Height **38'**

Setbacks to Property Line will Remain the Same

