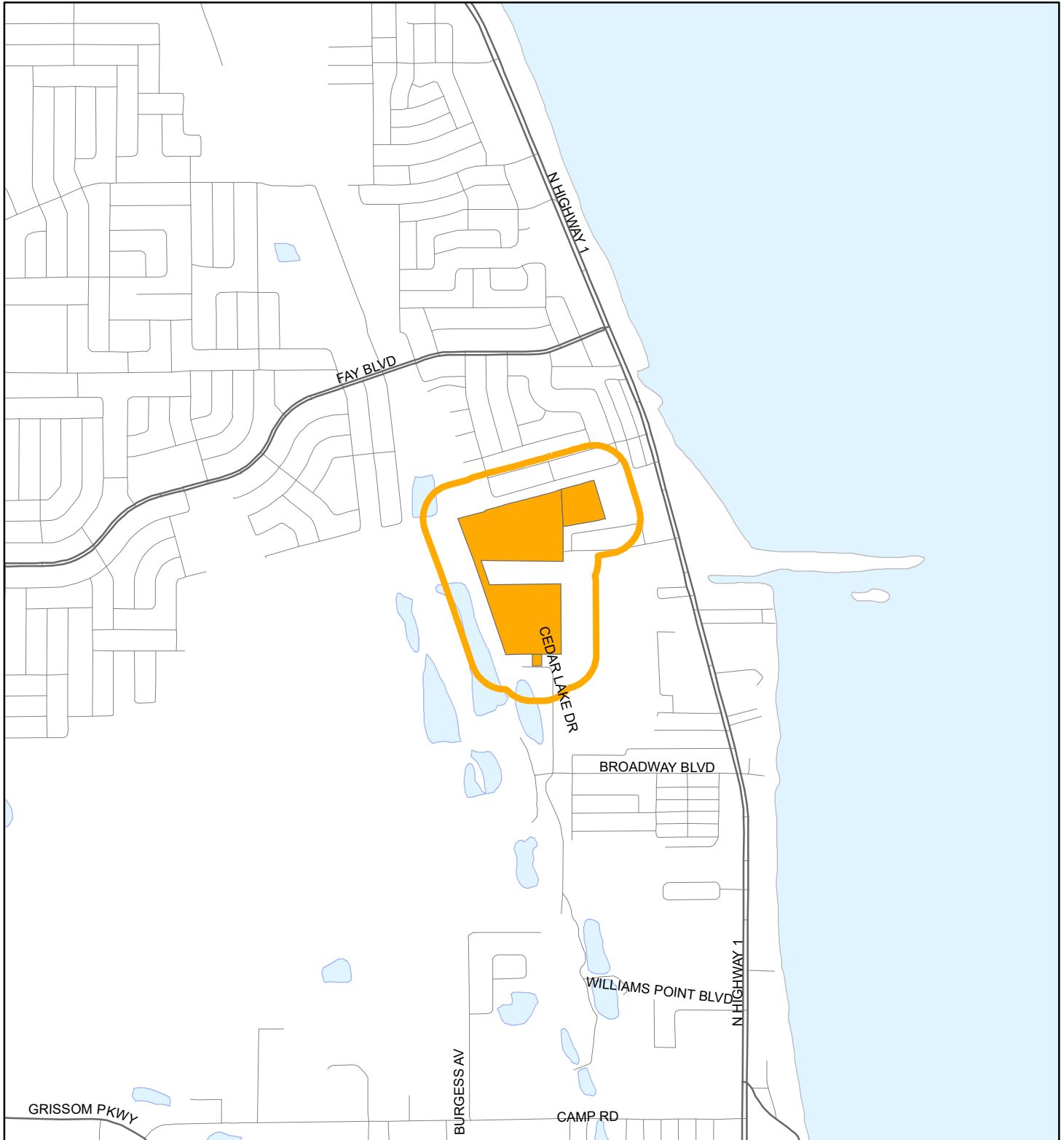


# LOCATION MAP

5971 CEDAR LAKE DRIVE REVOCABLE LAND TRUST and U.S. HIGHWAY NO. 1 COMMERCIAL LAND TRUST  
20Z00036



1:24,000 or 1 inch = 2,000 feet

Buffer Distance: 500 feet

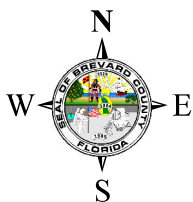
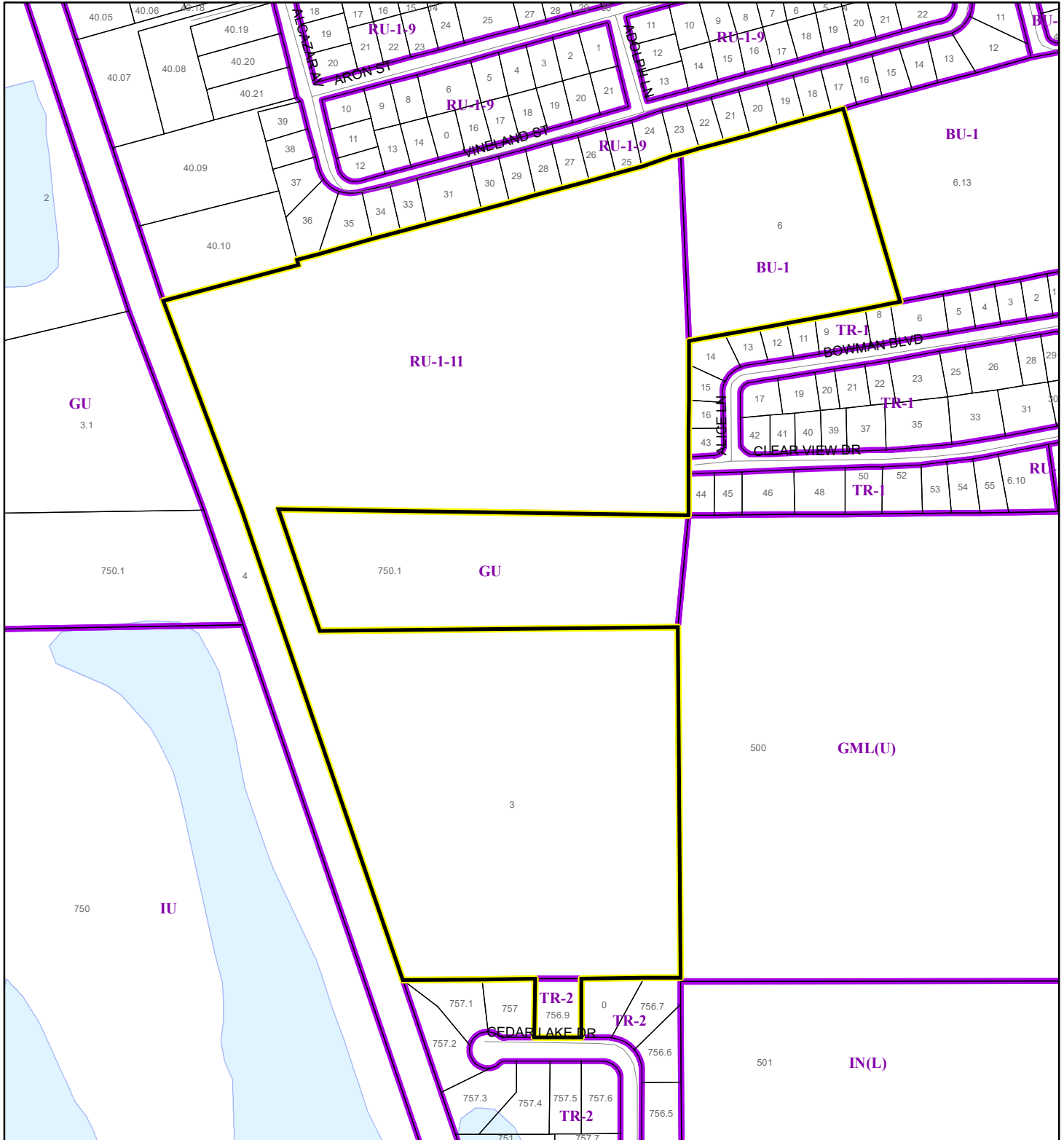
This map was compiled from recorded documents and does not reflect an actual survey. The Brevard County Board of County Commissioners does not assume responsibility for errors or omissions hereon.

Produced by BoCC - GIS Date: 11/9/2020

Buffer  
Subject Property

# ZONING MAP

5971 CEDAR LAKE DRIVE REVOCABLE LAND TRUST and U.S. HIGHWAY NO. 1 COMMERCIAL LAND TRUST  
20Z00036



1:4,800 or 1 inch = 400 feet

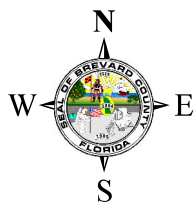
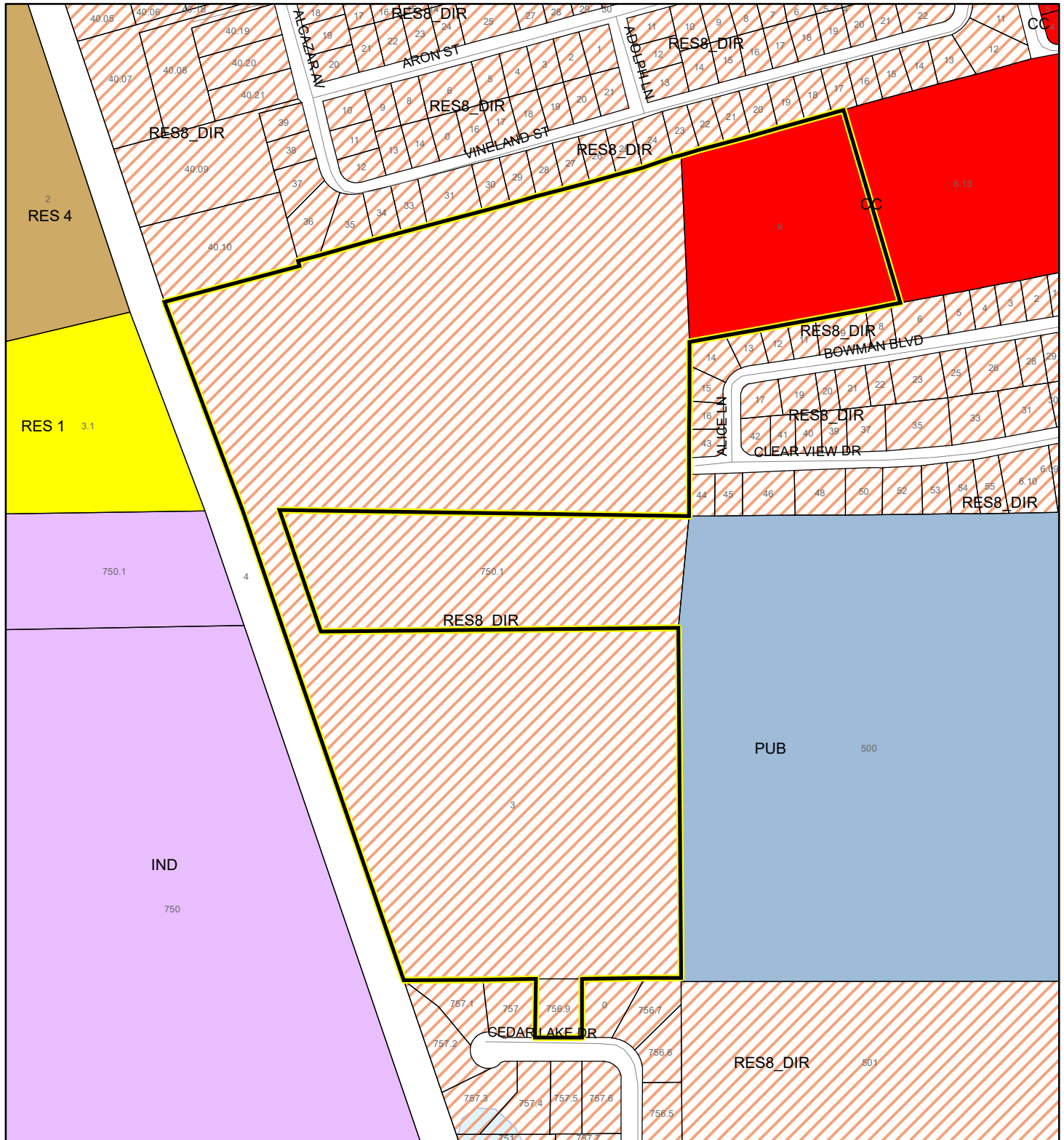
This map was compiled from recorded documents and does not reflect an actual survey. The Brevard County Board of County Commissioners does not assume responsibility for errors or omissions hereon.

Produced by BoCC - GIS Date: 11/10/2020

- Subject Property
- Parcels
- Zoning

# FUTURE LAND USE MAP

5971 CEDAR LAKE DRIVE REVOCABLE LAND TRUST and U.S. HIGHWAY NO. 1 COMMERCIAL LAND TRUST  
20Z00036



1:4,800 or 1 inch = 400 feet

Subject Property  
 Parcels

This map was compiled from recorded documents and does not reflect an actual survey. The Brevard County Board of County Commissioners does not assume responsibility for errors or omissions hereon.

Produced by BoCC - GIS Date: 11/9/2020



# AERIAL MAP

5971 CEDAR LAKE DRIVE REVOCABLE LAND TRUST and U.S. HIGHWAY NO. 1 COMMERCIAL LAND TRUST  
20Z00036




1:4,800 or 1 inch = 400 feet

PHOTO YEAR: 2020

This map was compiled from recorded documents and does not reflect an actual survey. The Brevard County Board of County Commissioners does not assume responsibility for errors or omissions hereon.

Produced by BoCC - GIS Date: 11/9/2020

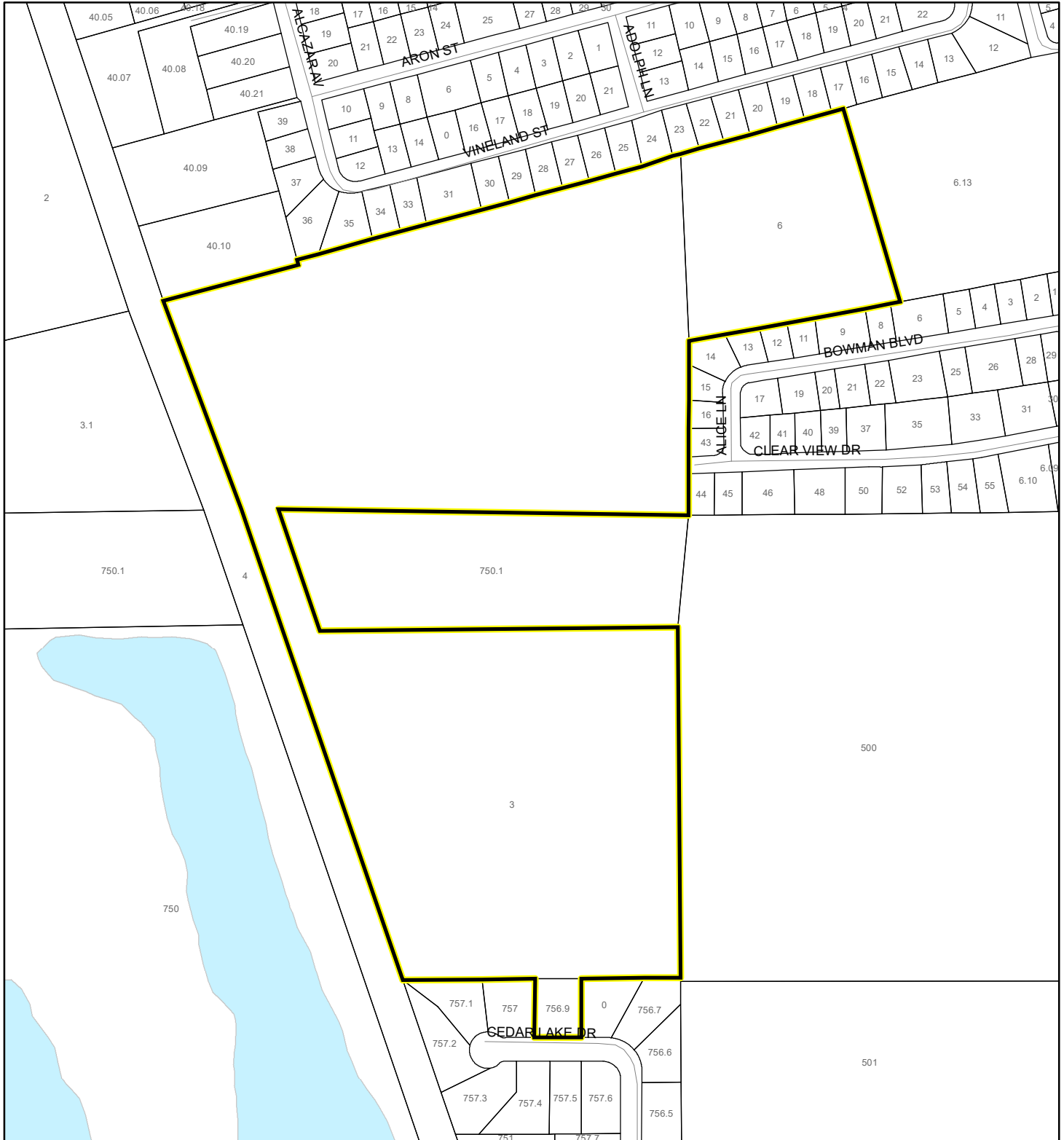
 Subject Property

 Parcels



# NWI WETLANDS MAP

5971 CEDAR LAKE DRIVE REVOCABLE LAND TRUST and U.S. HIGHWAY NO. 1 COMMERCIAL LAND TRUST  
20Z00036






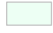

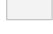

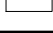


1:4,800 or 1 inch = 400 feet

This map was compiled from recorded documents and does not reflect an actual survey. The Brevard County Board of County Commissioners does not assume responsibility for errors or omissions hereon.

Produced by BoCC - GIS Date: 11/9/2020

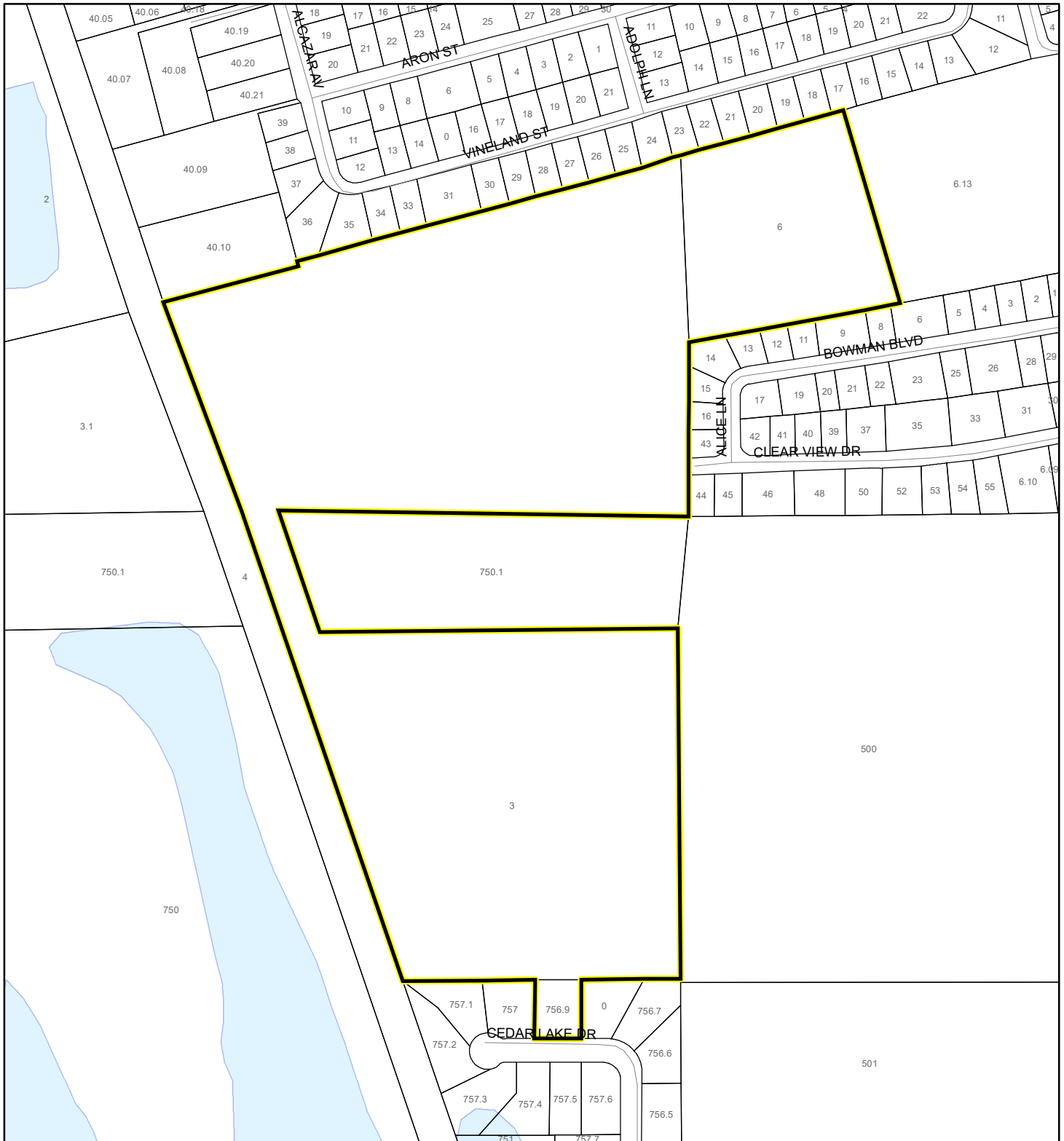
## National Wetlands Inventory (NWI)

 Estuarine and Marine Deepwater	 Freshwater Pond
 Estuarine and Marine Wetland	 Lake
 Freshwater Emergent Wetland	 Other
 Freshwater Forested/Shrub Wetland	 Riverine
	 Subject Property
	 Parcels

# SJRWMD FLUCCS WETLANDS - 6000 Series MAP

5971 CEDAR LAKE DRIVE REVOCABLE LAND TRUST and U.S. HIGHWAY NO. 1 COMMERCIAL LAND TRUST

20Z00036



1:4,800 or 1 inch = 400 feet

This map was compiled from recorded documents and does not reflect an actual survey. The Brevard County Board of County Commissioners does not assume responsibility for errors or omissions hereon.

Produced by BoCC - GIS Date: 11/9/2020

## SJRWMD FLUCCS WETLANDS

- Wetland Hardwood Forests - Series 6100
- Wetland Coniferous Forest - Series 6200
- Wetland Forested Mixed - Series 6300
- Vegetated Non-Forested Wetlands - Series 6400
- Non-Vegetated Wetland - Series 6500

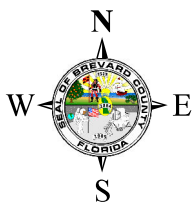
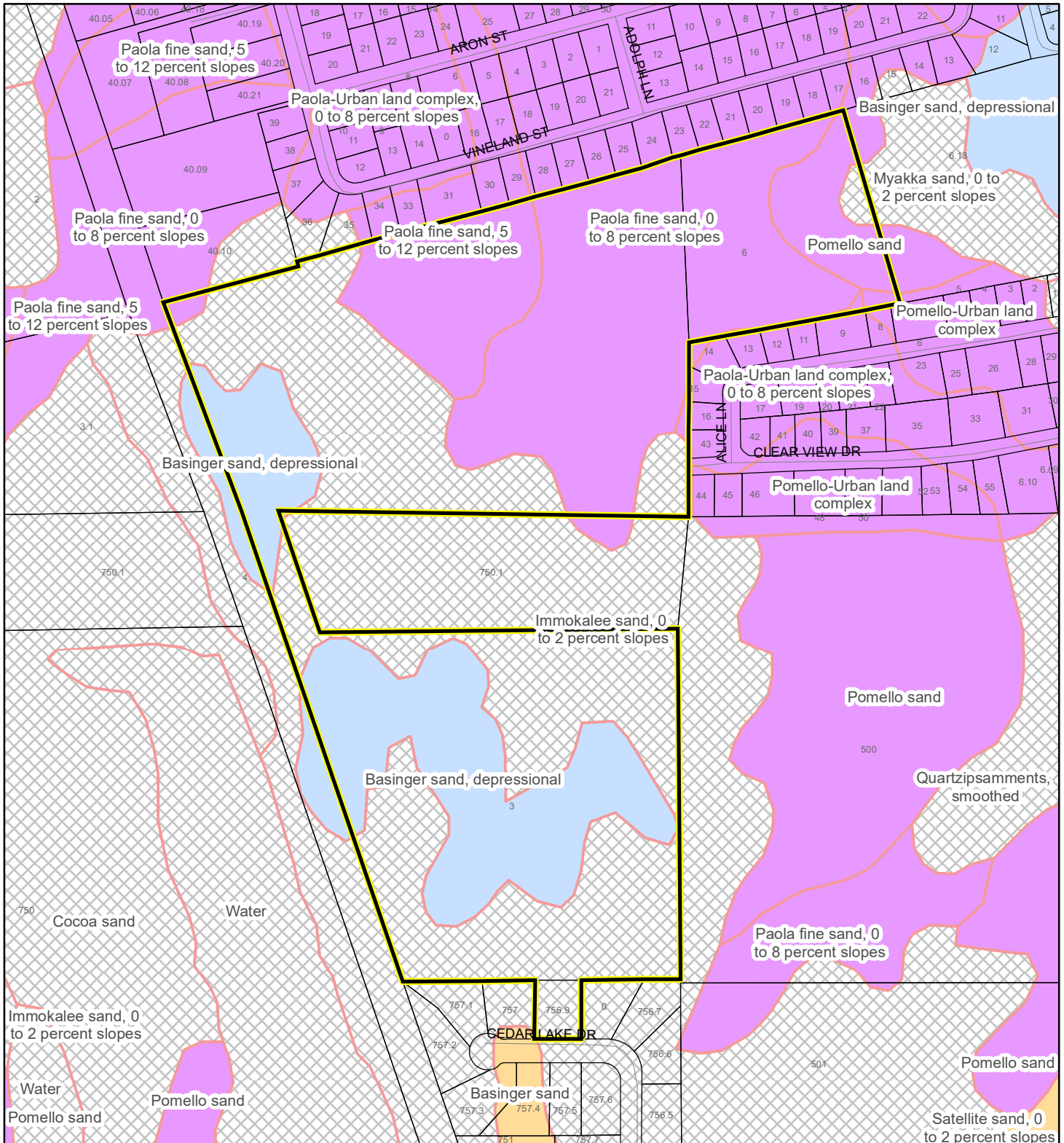
Subject Property

Parcels

# USDA SCSSS SOILS MAP

5971 CEDAR LAKE DRIVE REVOCABLE LAND TRUST and U.S. HIGHWAY NO. 1 COMMERCIAL LAND TRUST

20Z00036



1:4,800 or 1 inch = 400 feet

This map was compiled from recorded documents and does not reflect an actual survey. The Brevard County Board of County Commissioners does not assume responsibility for errors or omissions hereon.

Produced by BoCC - GIS Date: 11/9/2020

## USDA SCSSS Soils

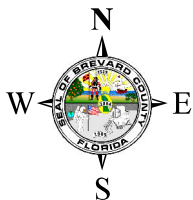
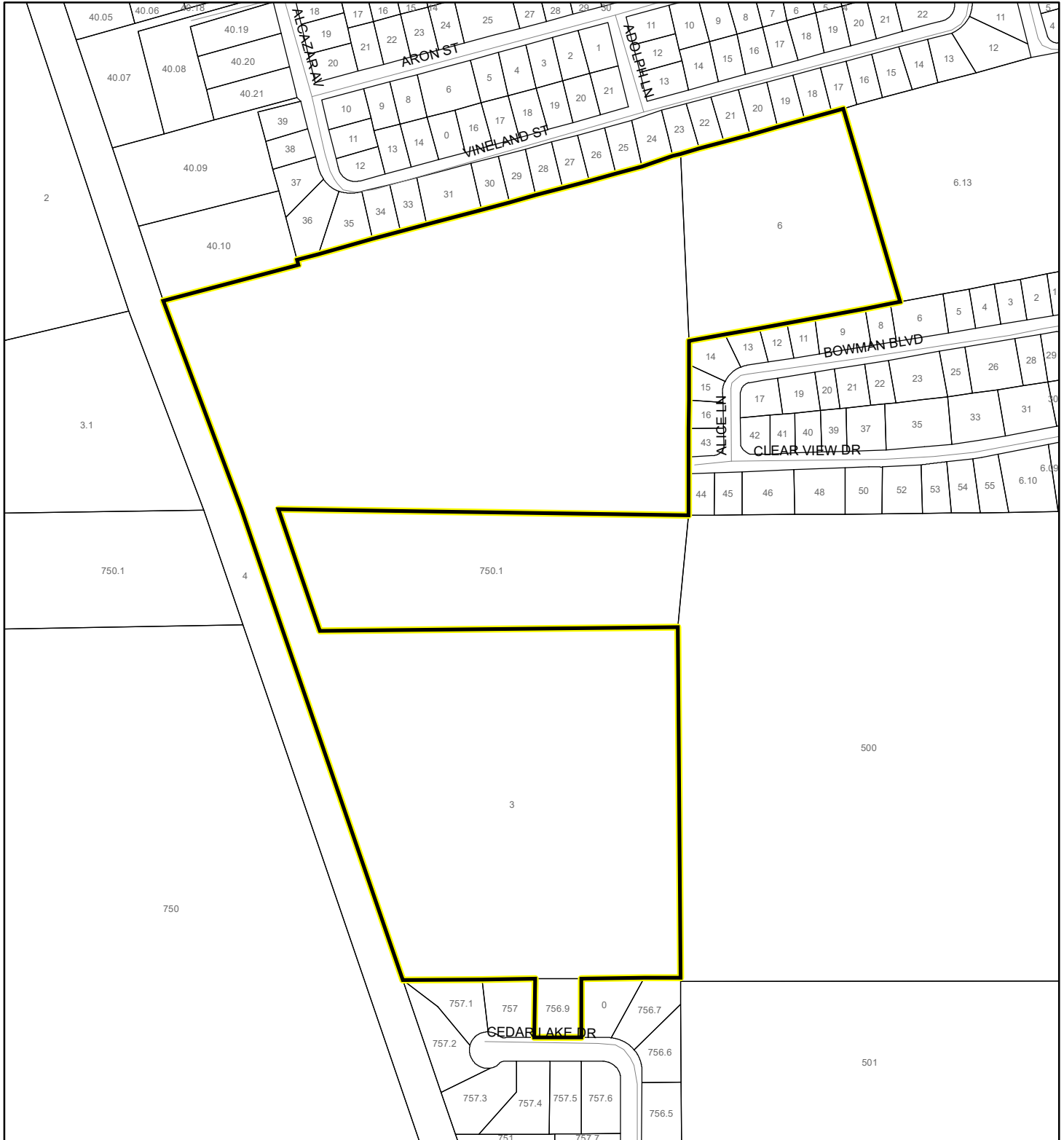
- Aquifer and Hydric
- Aquifer
- Hydric
- None

Subject Property

Parcels

# FEMA FLOOD ZONES MAP

5971 CEDAR LAKE DRIVE REVOCABLE LAND TRUST and U.S. HIGHWAY NO. 1 COMMERCIAL LAND TRUST  
20Z00036



1:4,800 or 1 inch = 400 feet

This map was compiled from recorded documents and does not reflect an actual survey. The Brevard County Board of County Commissioners does not assume responsibility for errors or omissions hereon.

Produced by BoCC - GIS Date: 11/9/2020

## FEMA Flood Zones

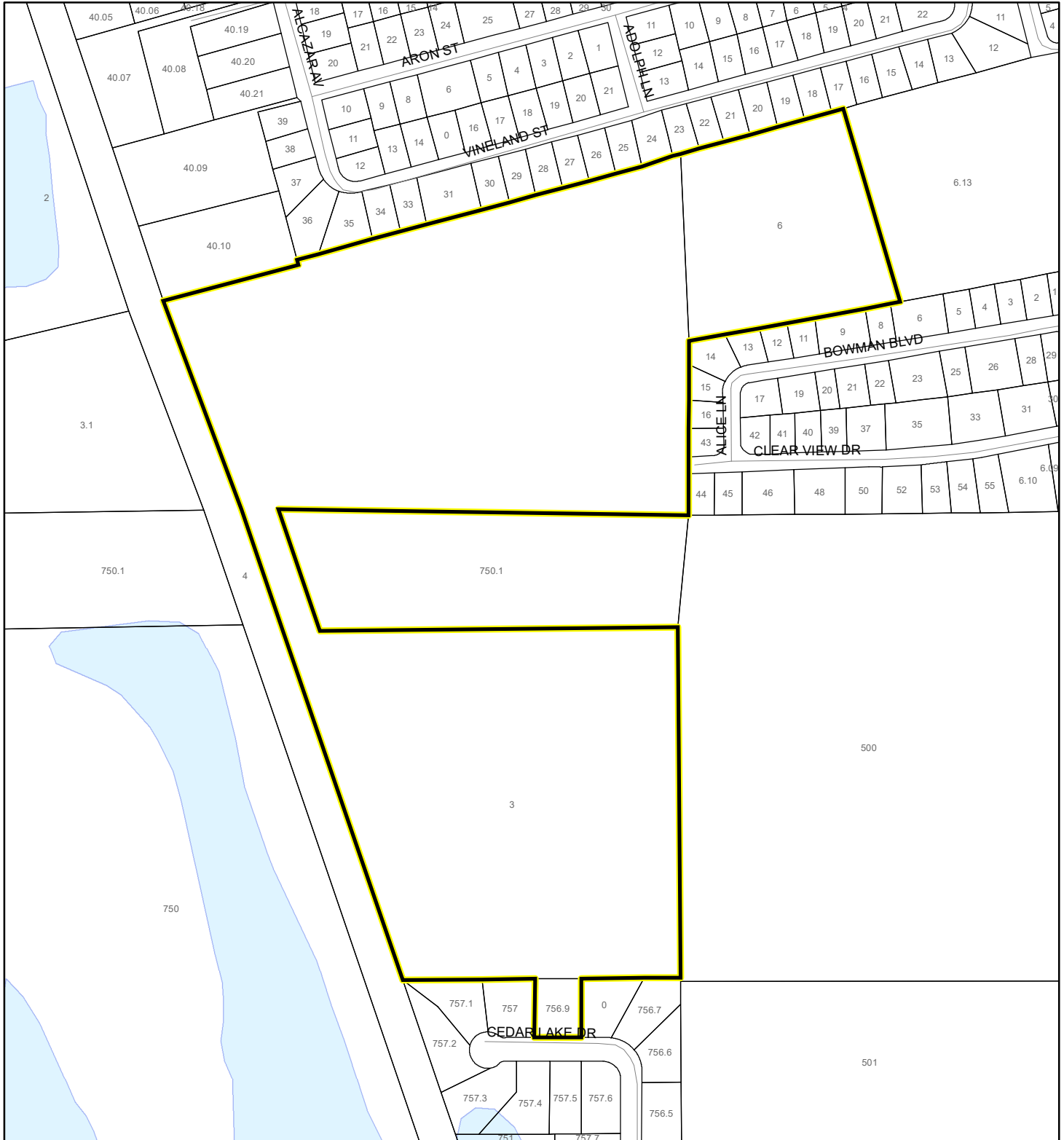
- |   |            |                      |
|---|------------|----------------------|
| A   | AO         | X                    |
| AE  | Open Water | X Protected By Levee |
| AH  | VE         |                      |
| 0.2 Percent Annual Chance Flood Hazard                      |            |                      |
| 0.2 Percent Annual Chance Flood Hazard Contained in Channel |            |                      |
| Subject Property  | Parcels    |                      |



# COASTAL HIGH HAZARD AREA MAP

5971 CEDAR LAKE DRIVE REVOCABLE LAND TRUST and U.S. HIGHWAY NO. 1 COMMERCIAL LAND TRUST

20Z00036



1:4,800 or 1 inch = 400 feet


This map was compiled from recorded documents and does not reflect an actual survey. The Brevard County Board of County Commissioners does not assume responsibility for errors or omissions hereon.

Produced by BoCC - GIS Date: 11/9/2020

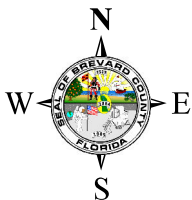
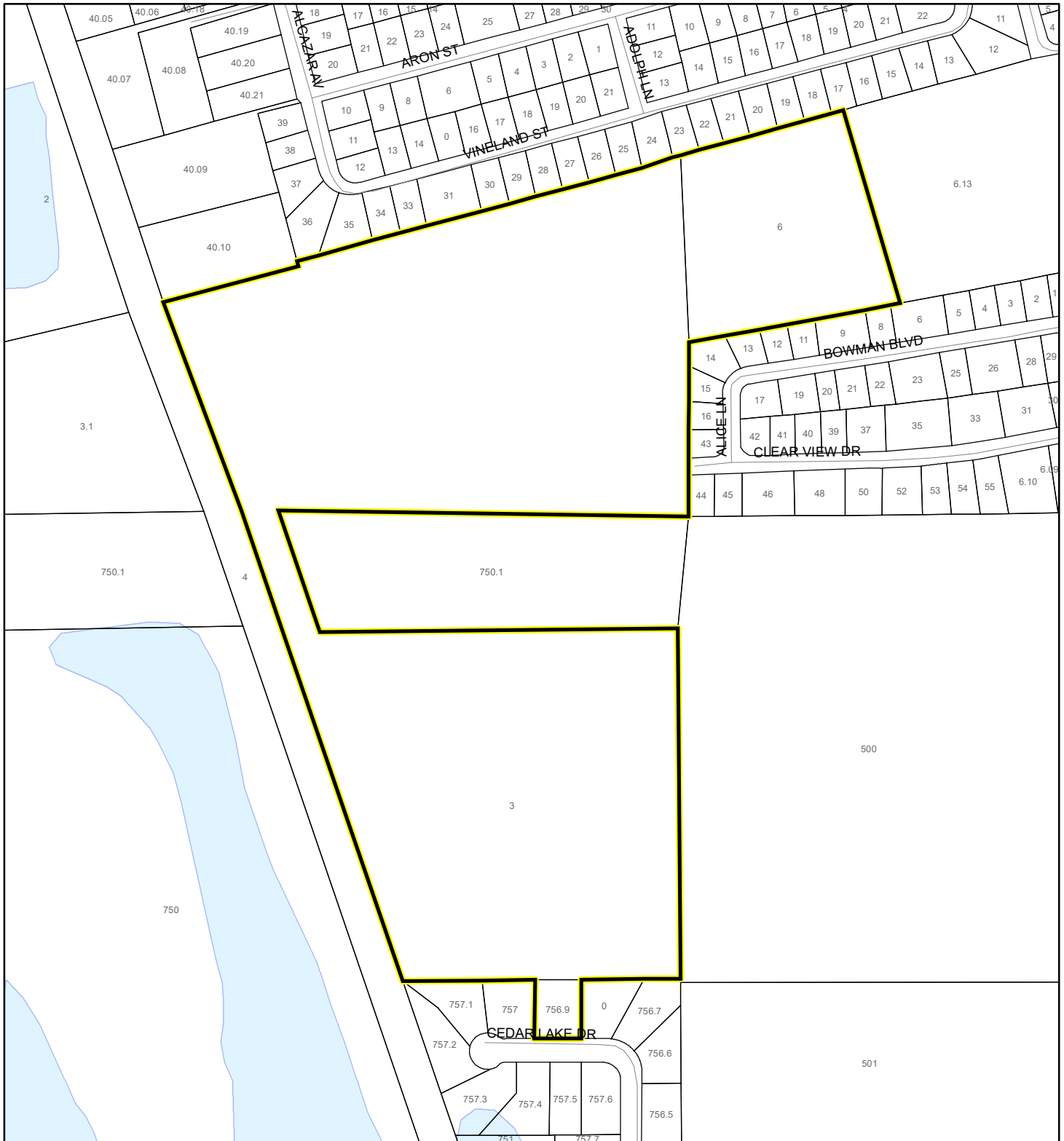
 Subject Property

 Parcels

**Coastal High Hazard Area**

 SurgeZoneCat1

20Z00036



1:4,800      or 1 inch = 400 feet

This map was compiled from recorded documents and does not reflect an actual survey. The Brevard County Board of County Commissioners does not assume responsibility for errors or omissions hereon.

Produced by BoCC - GIS    Date: 11/9/2020

**Subject Property**

☐ Parcels

## Septic Overlay

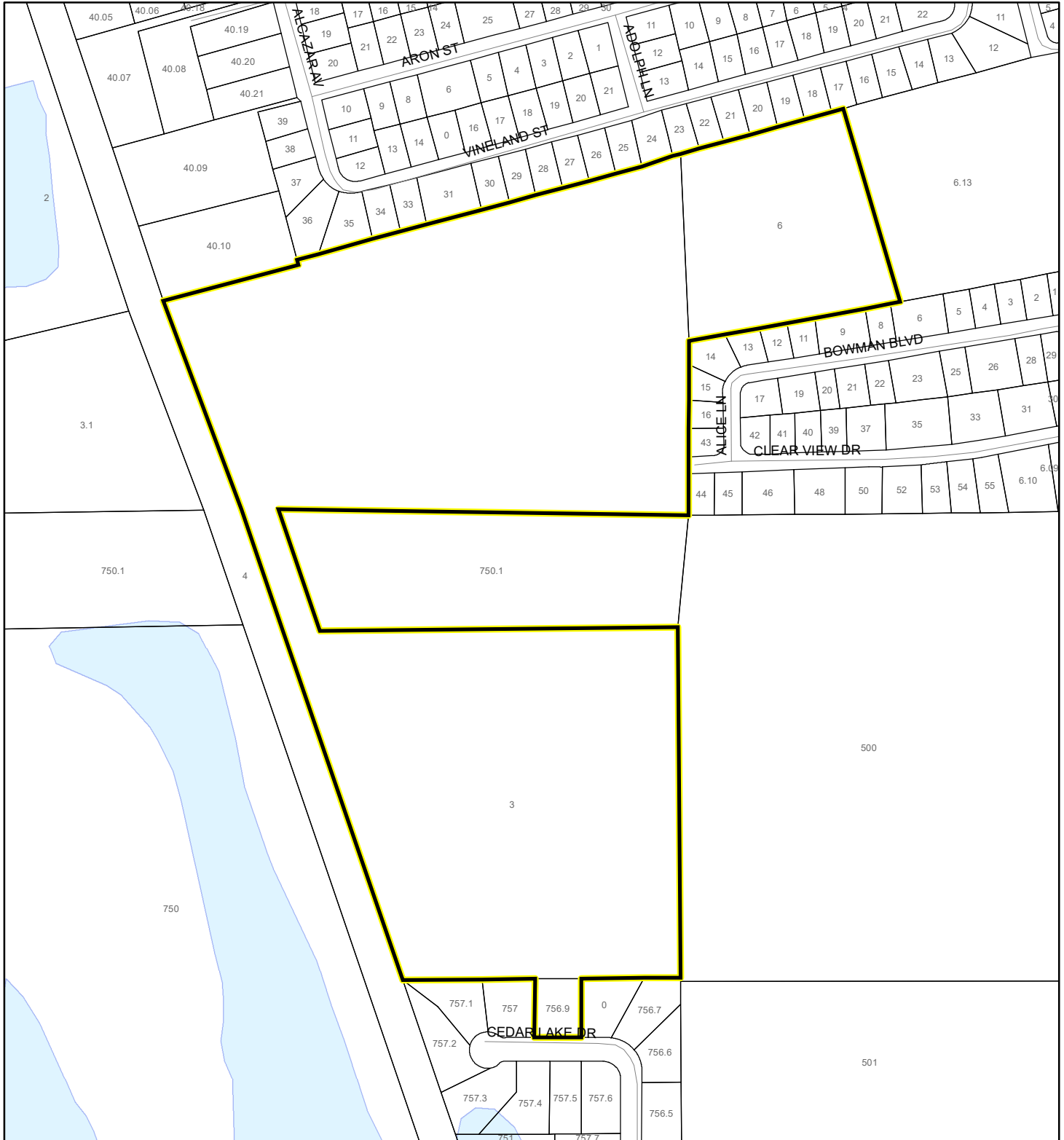
 40 Meters

 60 Meters

 All Distances

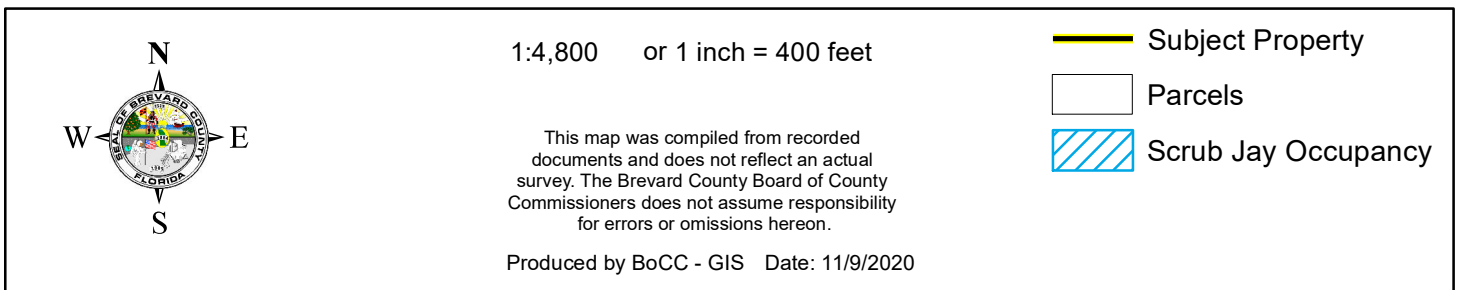
# EAGLE NESTS MAP

5971 CEDAR LAKE DRIVE REVOCABLE LAND TRUST and U.S. HIGHWAY NO. 1 COMMERCIAL LAND TRUST  
20Z00036





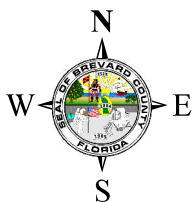
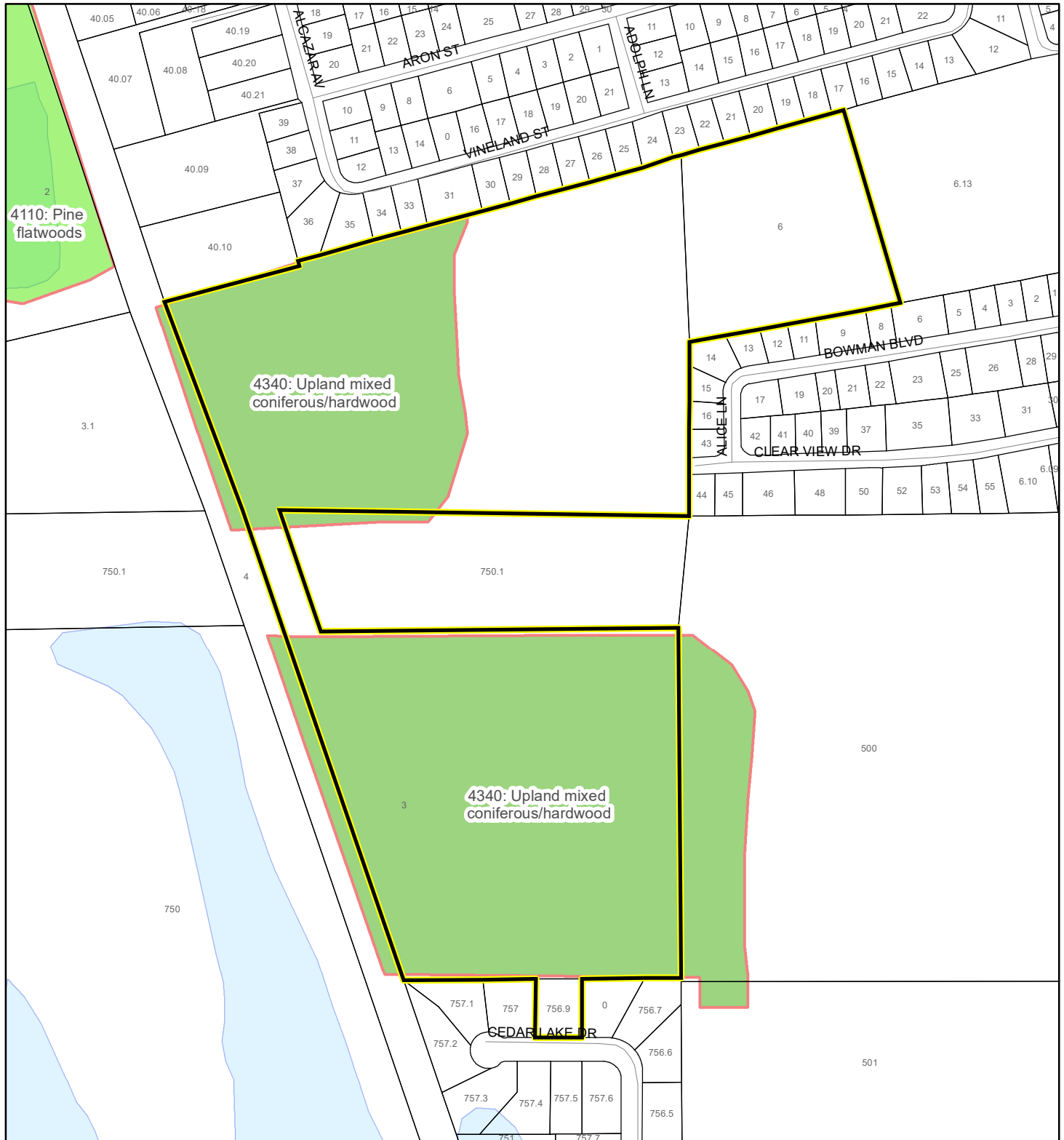
5971 CEDAR LAKE DRIVE REVOCABLE LAND TRUST and U.S. HIGHWAY NO. 1 COMMERCIAL LAND TRUST  
20Z00036



# SJRWMD FLUCCS UPLAND FORESTS - 4000 Series MAP

5971 CEDAR LAKE DRIVE REVOCABLE LAND TRUST and U.S. HIGHWAY NO. 1 COMMERCIAL LAND TRUST

20Z00036



1:4,800 or 1 inch = 400 feet

This map was compiled from recorded documents and does not reflect an actual survey. The Brevard County Board of County Commissioners does not assume responsibility for errors or omissions hereon.

Produced by BoCC - GIS Date: 11/9/2020

## SJRWMD FLUCCS Upland Forests

- Upland Coniferous Forest - 4100 Series
- Upland Hardwood Forest - 4200 Series
- Upland Mixed Forest - 4300 Series
- Tree Plantations - 4400 Series

Subject Property

Parcels