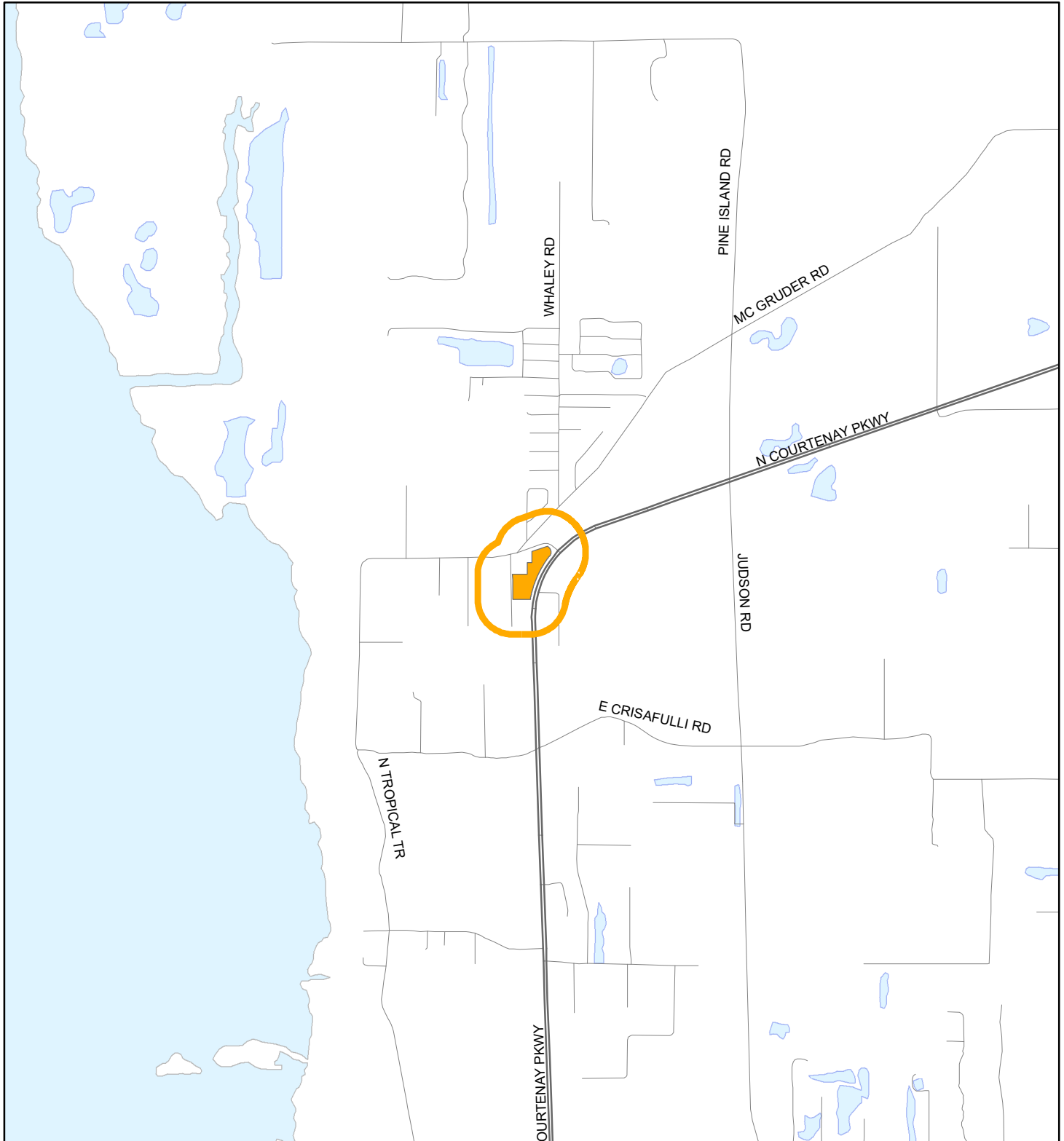


LOCATION MAP

KURZ, HAROLD, TRUSTEE
20PZ00107 SMALL SCALE AMENDMENT 20S.11



1:24,000 or 1 inch = 2,000 feet

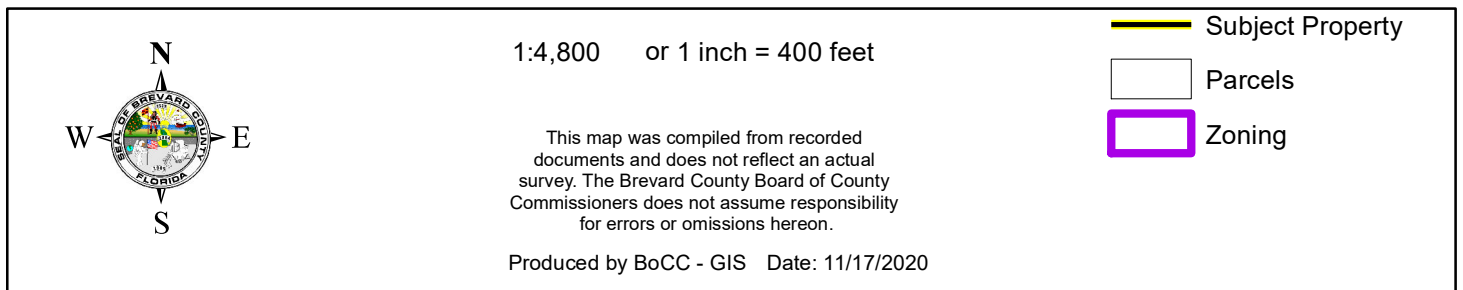
Buffer Distance: 500 feet

This map was compiled from recorded documents and does not reflect an actual survey. The Brevard County Board of County Commissioners does not assume responsibility for errors or omissions hereon.

Produced by BoCC - GIS Date: 11/17/2020

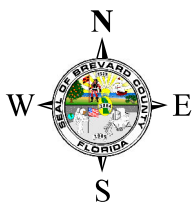
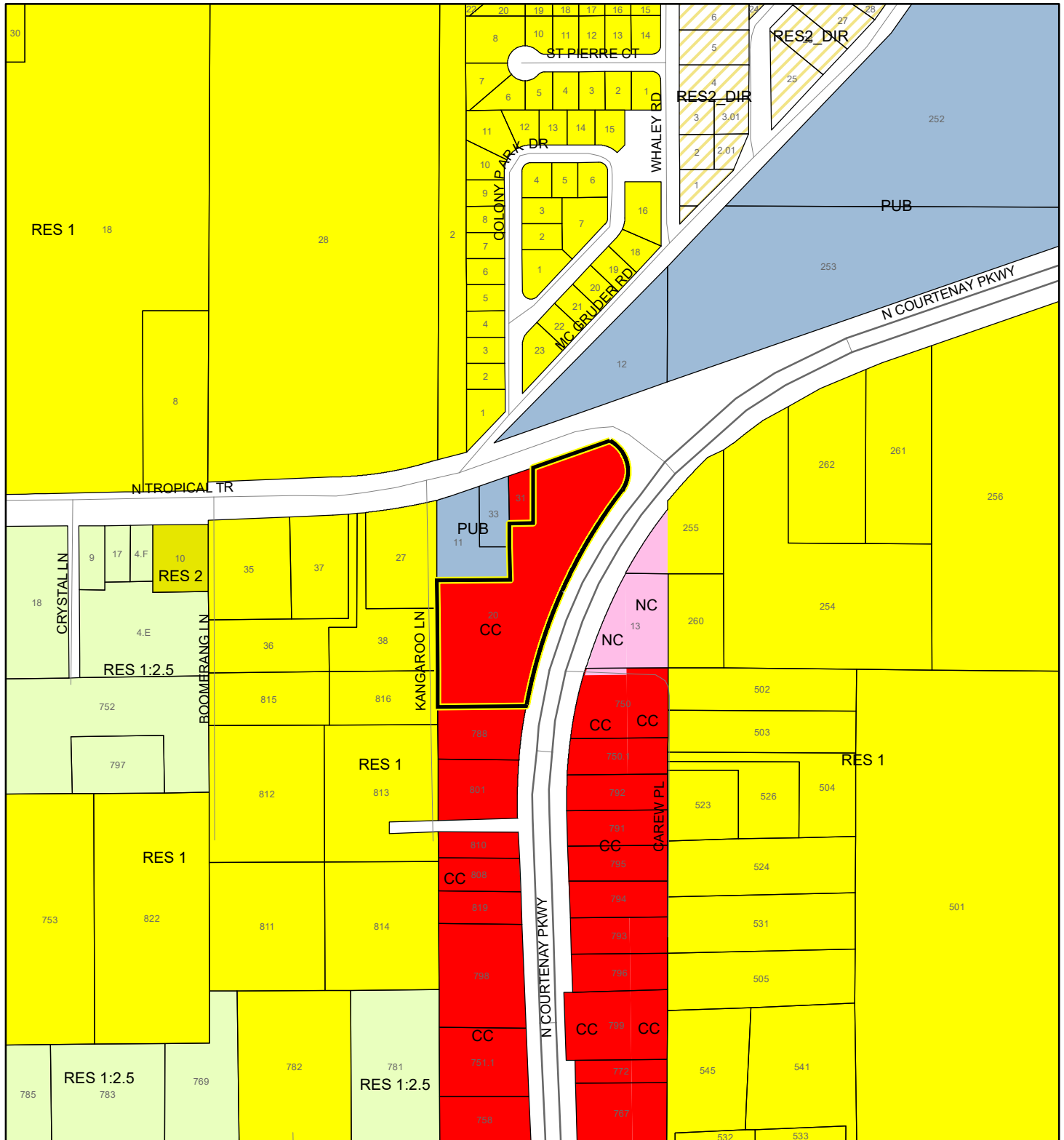
Buffer
Subject Property

KURZ, HAROLD, TRUSTEE
20PZ00107 SMALL SCALE AMENDMENT 20S.11



FUTURE LAND USE MAP

KURZ, HAROLD, TRUSTEE
20PZ00107 SMALL SCALE AMENDMENT 20S.11



1:4,800 or 1 inch = 400 feet

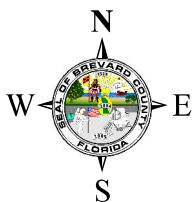
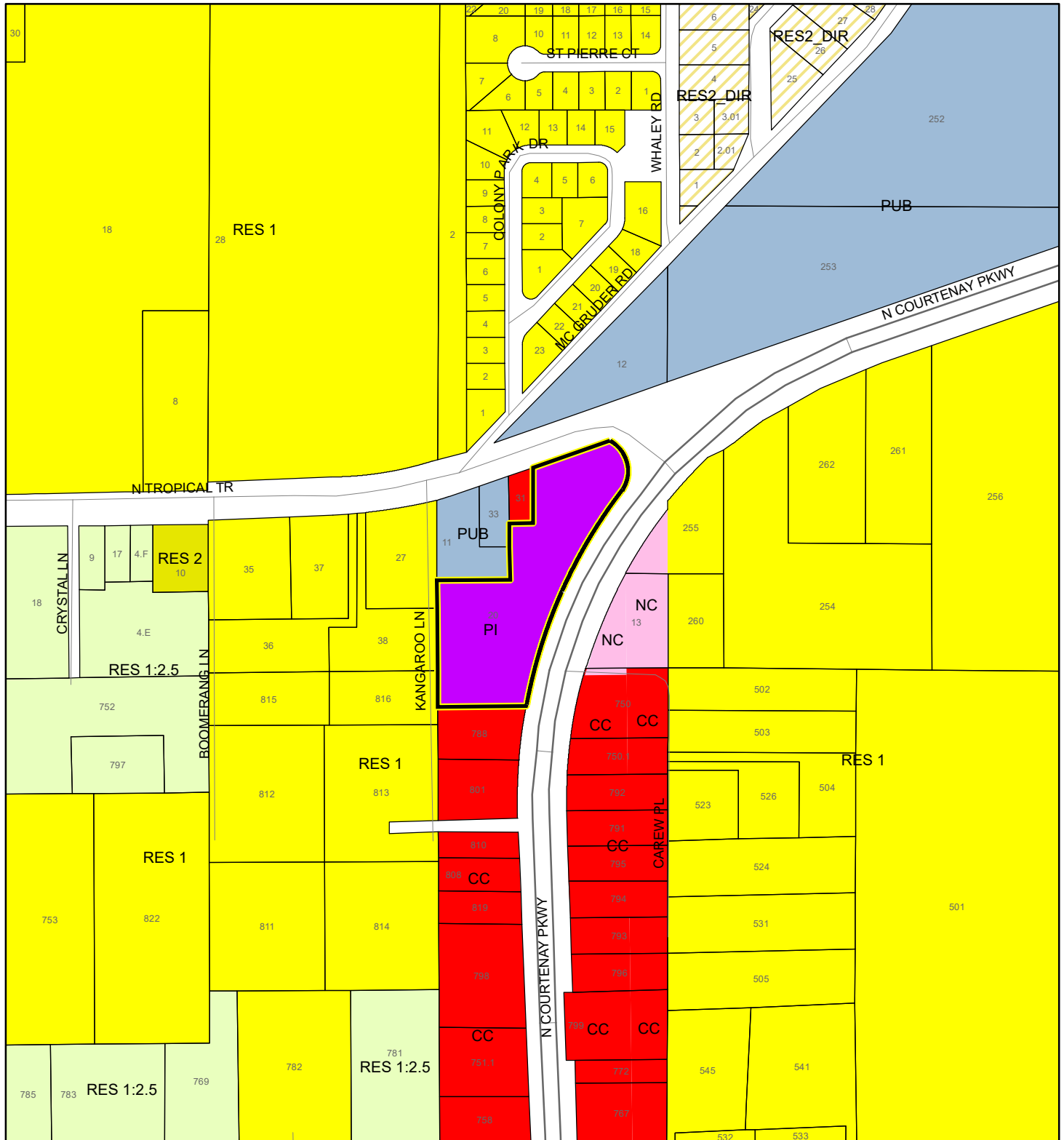
Subject Property
 Parcels

This map was compiled from recorded documents and does not reflect an actual survey. The Brevard County Board of County Commissioners does not assume responsibility for errors or omissions hereon.

Produced by BoCC - GIS Date: 11/17/2020

PROPOSED FUTURE LAND USE MAP

KURZ, HAROLD, TRUSTEE
20PZ00107 SMALL SCALE AMENDMENT 20S.11



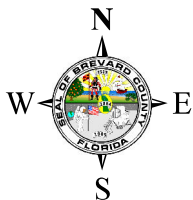
1:4,800 or 1 inch = 400 feet

Subject Property
Parcels

This map was compiled from recorded documents and does not reflect an actual survey. The Brevard County Board of County Commissioners does not assume responsibility for errors or omissions hereon.

Produced by BoCC - GIS Date: 11/17/2020

AERIAL MAP
KURZ, HAROLD, TRUSTEE
20PZ00107 SMALL SCALE AMENDMENT 20S.11





1:4,800 or 1 inch = 400 feet

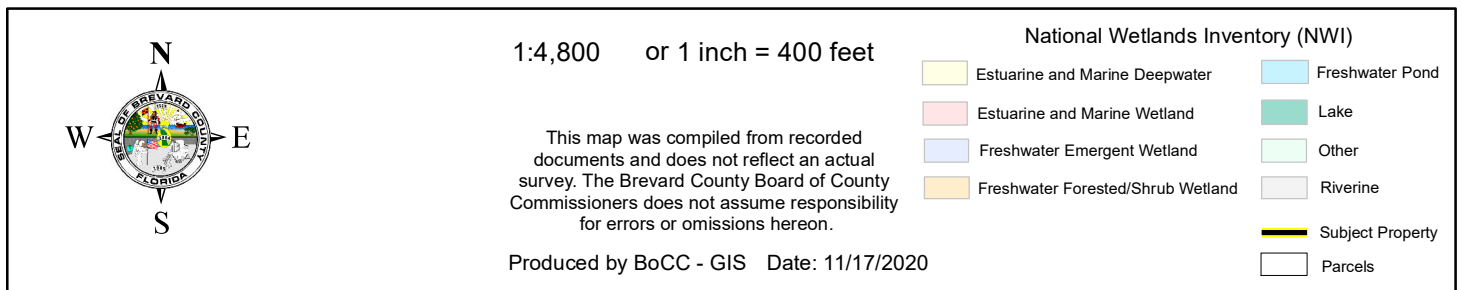
PHOTO YEAR: 2020

This map was compiled from recorded documents and does not reflect an actual survey. The Brevard County Board of County Commissioners does not assume responsibility for errors or omissions hereon.

Produced by BoCC - GIS Date: 11/17/2020

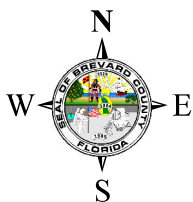
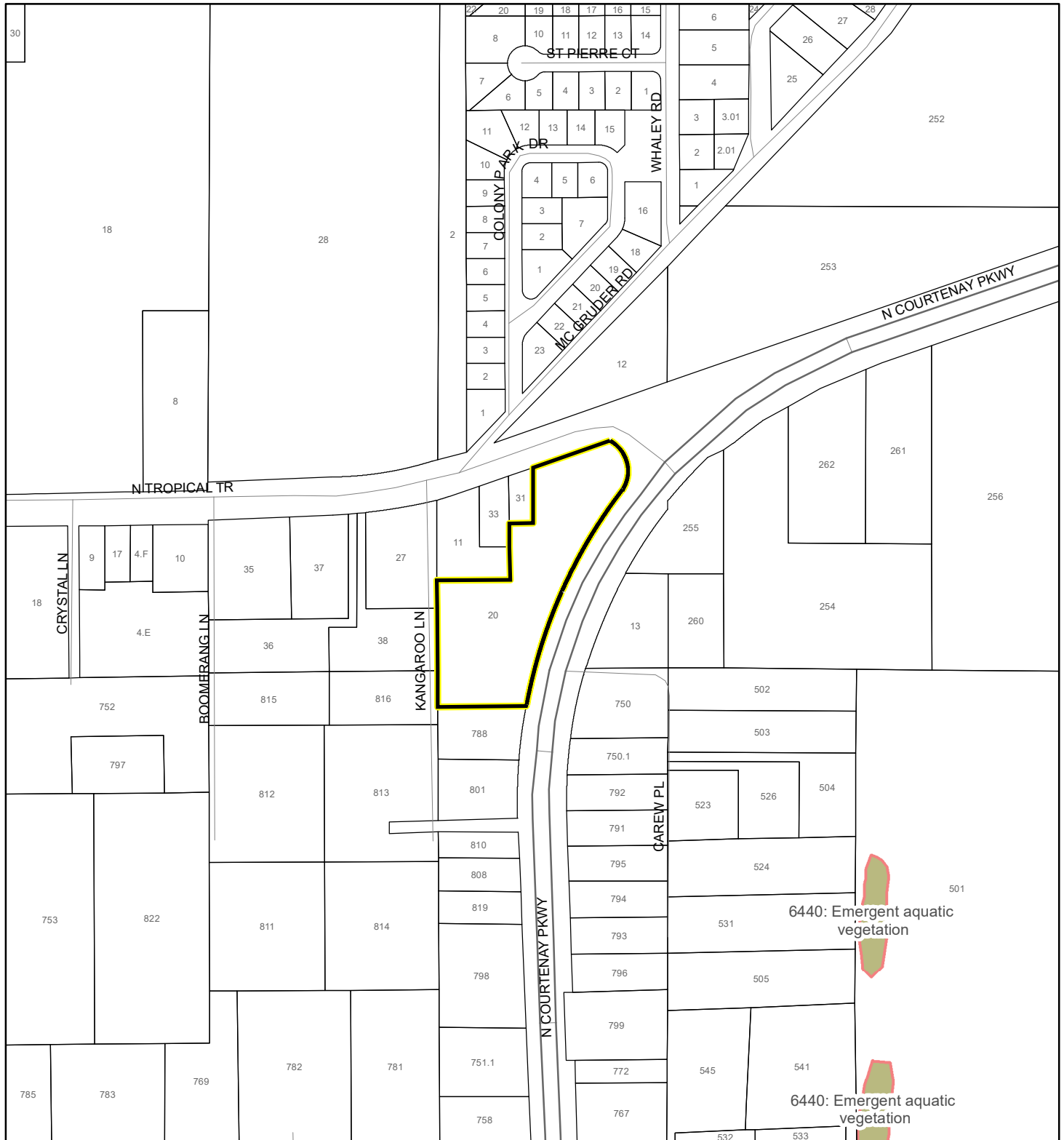
 Subject Property
 Parcels

KURZ, HAROLD, TRUSTEE
20PZ00107 SMALL SCALE AMENDMENT 20S.11



SJRWMD FLUCCS WETLANDS - 6000 Series MAP

KURZ, HAROLD, TRUSTEE
20PZ00107 SMALL SCALE AMENDMENT 20S.11



1:4,800 or 1 inch = 400 feet

This map was compiled from recorded documents and does not reflect an actual survey. The Brevard County Board of County Commissioners does not assume responsibility for errors or omissions hereon.

Produced by BoCC - GIS Date: 11/17/2020

SJRWMD FLUCCS WETLANDS

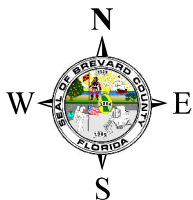
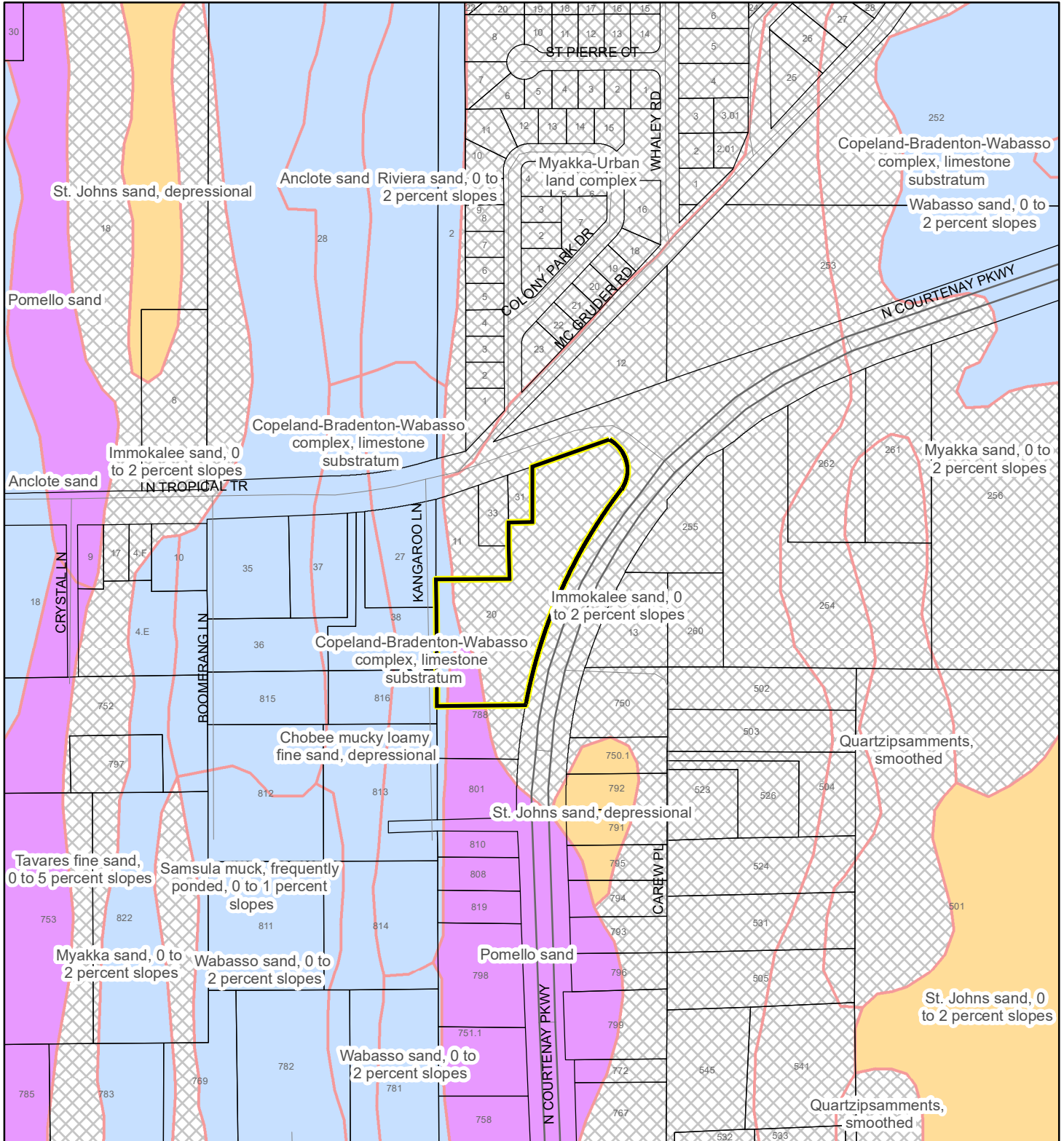
- Wetland Hardwood Forests - Series 6100
- Wetland Coniferous Forest - Series 6200
- Wetland Forested Mixed - Series 6300
- Vegetated Non-Forested Wetlands - Series 6400
- Non-Vegetated Wetland - Series 6500

Subject Property

Parcels

USDA SCSSS SOILS MAP

KURZ, HAROLD, TRUSTEE
20PZ00107 SMALL SCALE AMENDMENT 20S.11



1:4,800 or 1 inch = 400 feet

This map was compiled from recorded documents and does not reflect an actual survey. The Brevard County Board of County Commissioners does not assume responsibility for errors or omissions hereon.

Produced by BoCC - GIS Date: 11/17/2020

USDA SCSSS Soils

Aquifer and Hydric

Aquifer

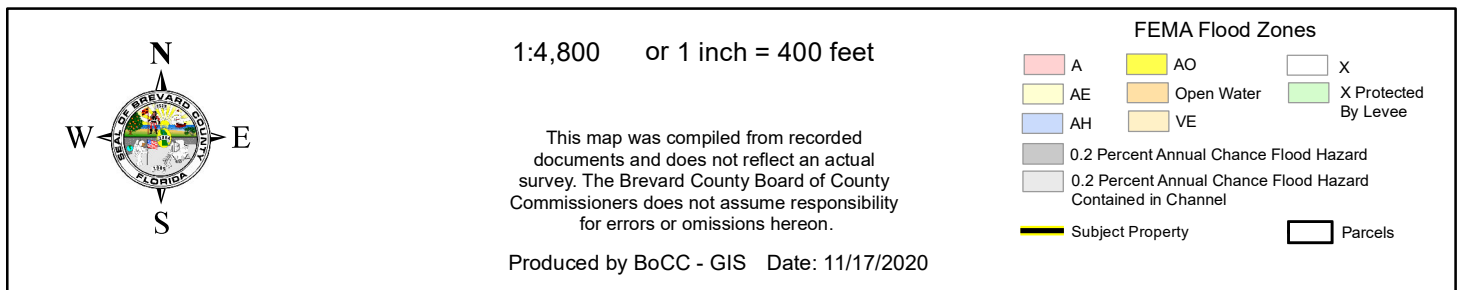
Hydric

None

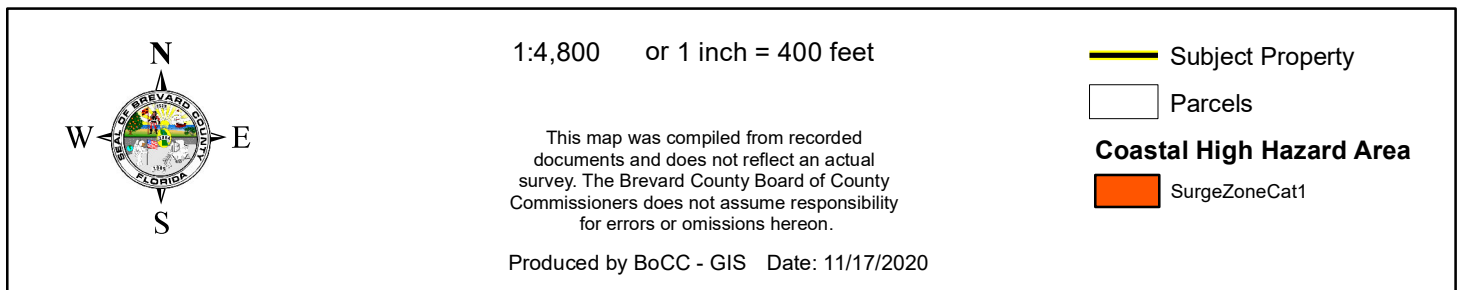
Subject Property

Parcels

KURZ, HAROLD, TRUSTEE
20PZ00107 SMALL SCALE AMENDMENT 20S.11

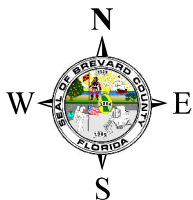
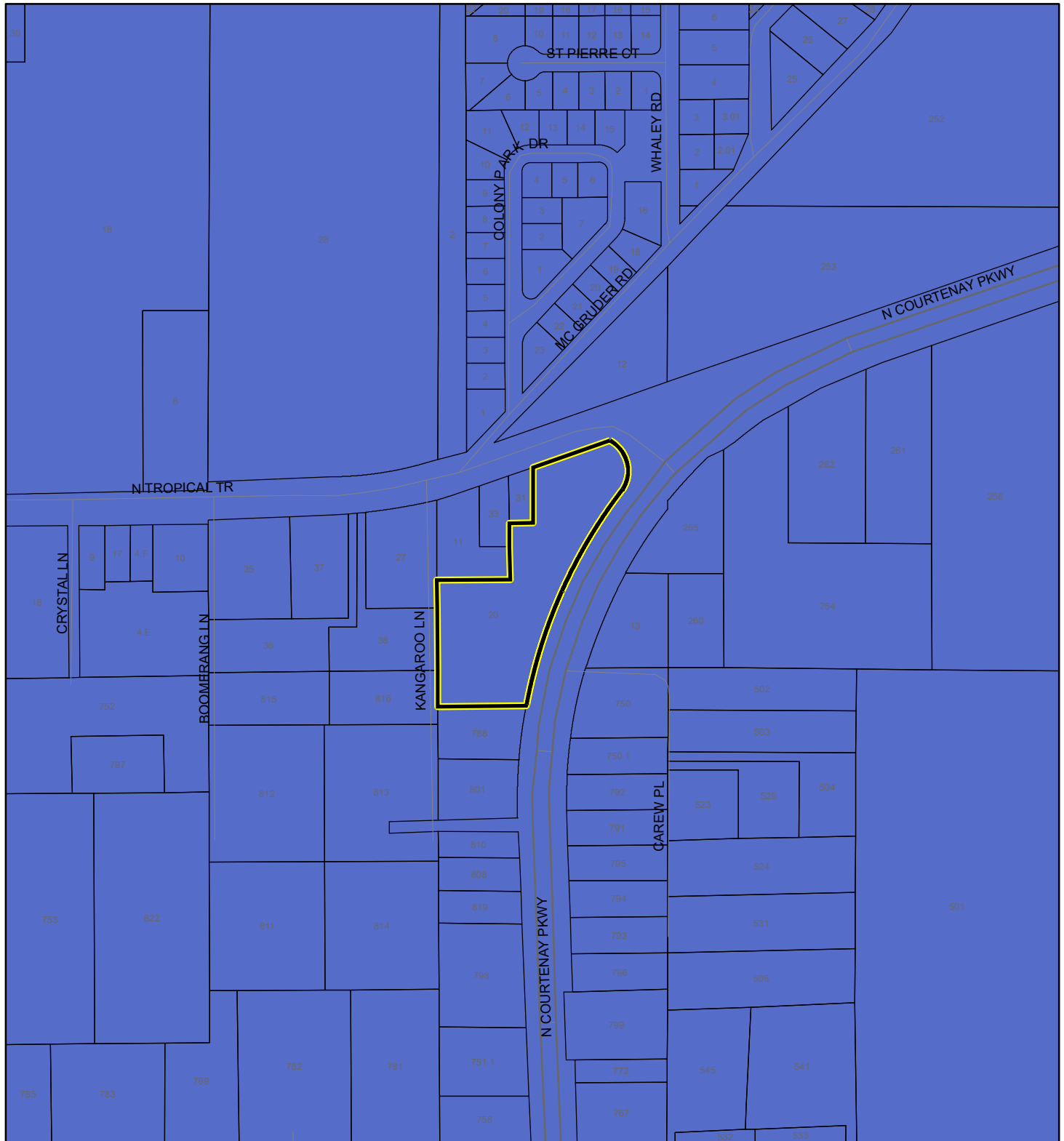


KURZ, HAROLD, TRUSTEE
20PZ00107 SMALL SCALE AMENDMENT 20S.11



INDIAN RIVER LAGOON SEPTIC OVERLAY MAP

KURZ, HAROLD, TRUSTEE
20PZ00107 SMALL SCALE AMENDMENT 20S.11



1:4,800 or 1 inch = 400 feet

This map was compiled from recorded documents and does not reflect an actual survey. The Brevard County Board of County Commissioners does not assume responsibility for errors or omissions hereon.

Produced by BoCC - GIS Date: 11/17/2020

 Subject Property

 Parcels

Septic Overlay

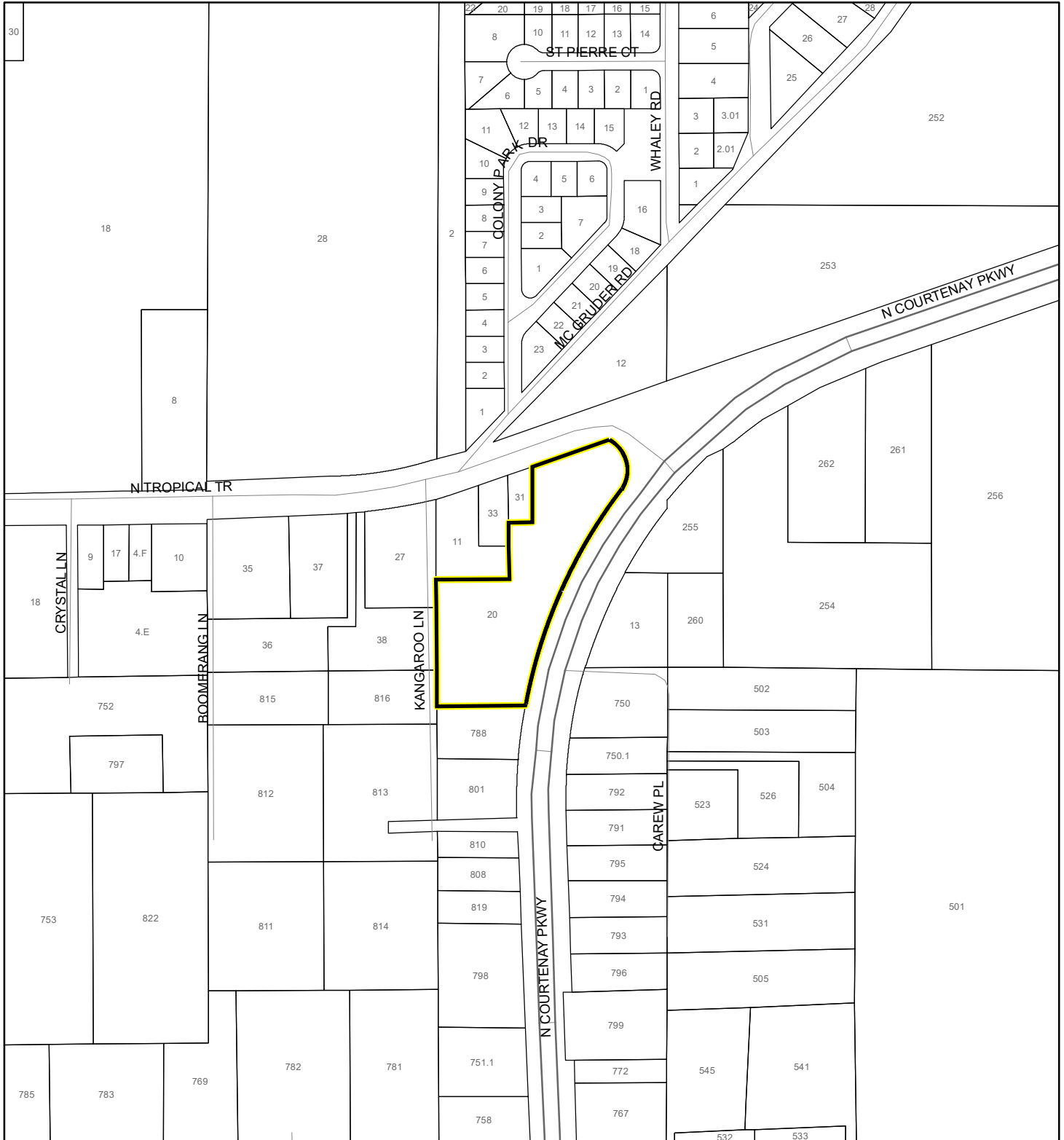
 40 Meters

 60 Meters

 All Distances

EAGLE NESTS MAP

KURZ, HAROLD, TRUSTEE
20PZ00107 SMALL SCALE AMENDMENT 20S.11




1:4,800 or 1 inch = 400 feet

This map was compiled from recorded documents and does not reflect an actual survey. The Brevard County Board of County Commissioners does not assume responsibility for errors or omissions hereon.

Produced by BoCC - GIS Date: 11/17/2020

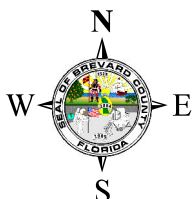
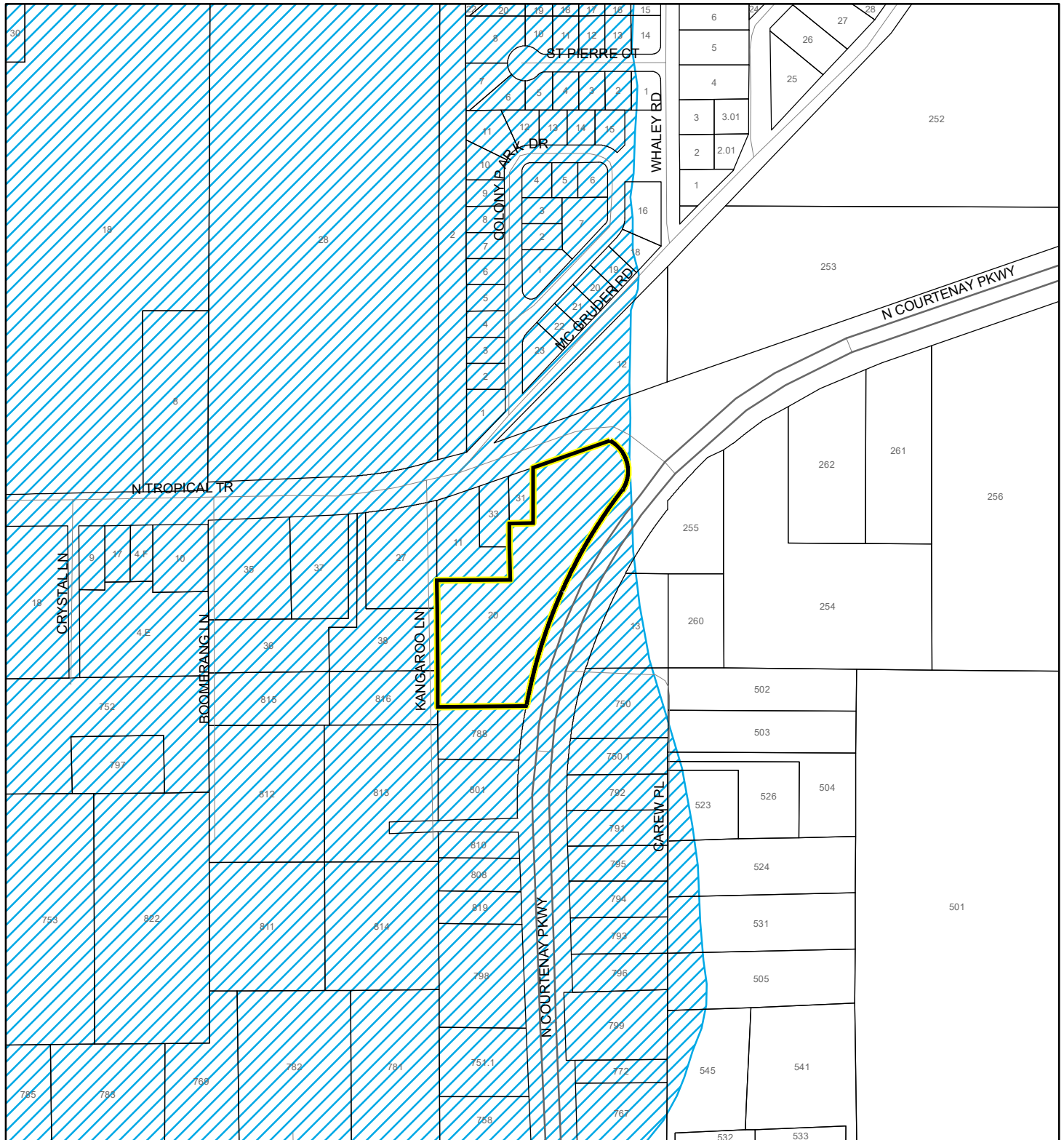
 Subject Property

 Parcels

 Eagle Nests
FWS 2010

SCRUB JAY OCCUPANCY MAP

KURZ, HAROLD, TRUSTEE
20PZ00107 SMALL SCALE AMENDMENT 20S.11



1:4,800 or 1 inch = 400 feet

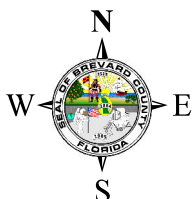
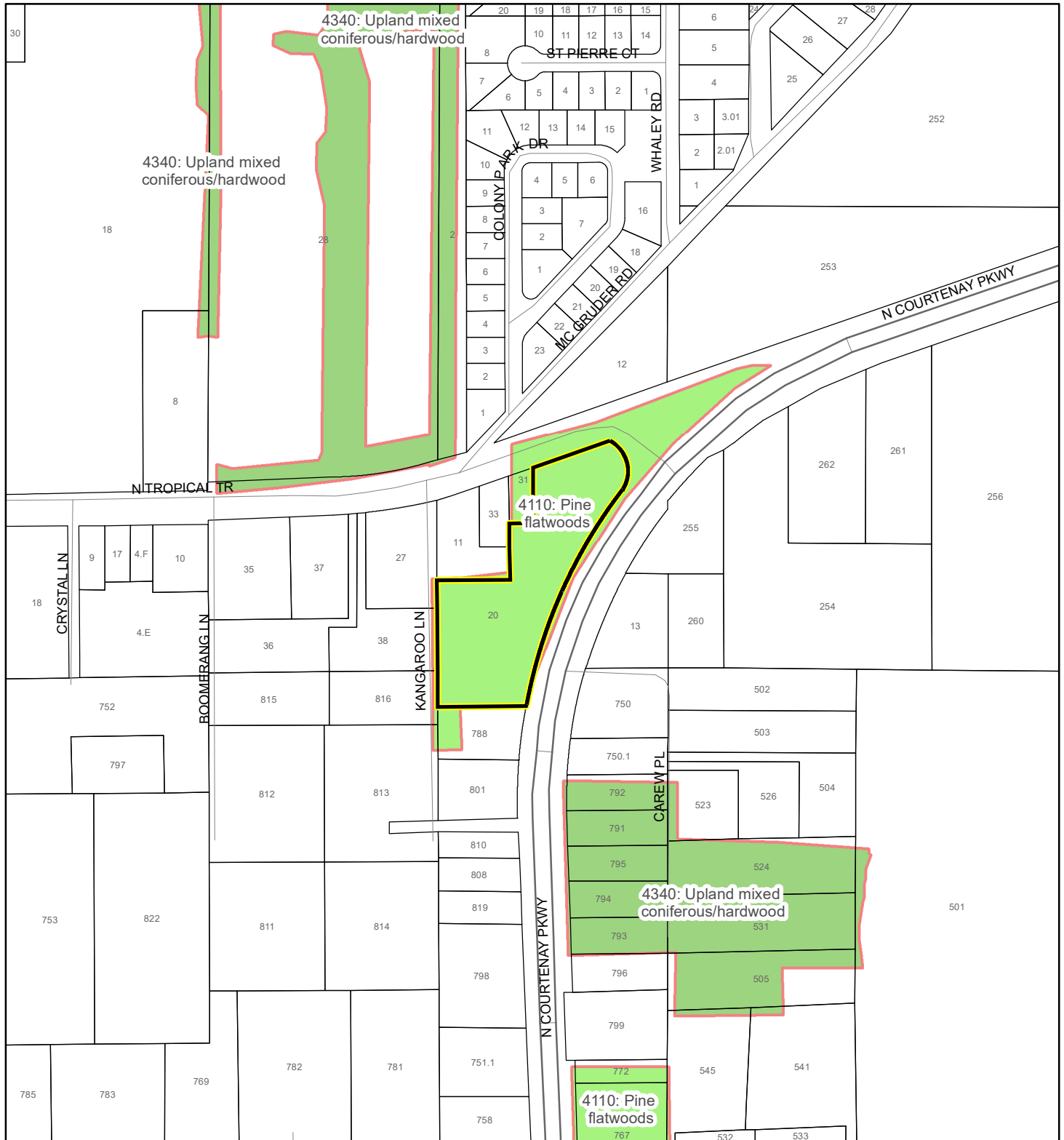
This map was compiled from recorded documents and does not reflect an actual survey. The Brevard County Board of County Commissioners does not assume responsibility for errors or omissions hereon.

Produced by BoCC - GIS Date: 11/17/2020

- Subject Property
- Parcels
- Scrub Jay Occupancy

SJRWMD FLUCCS UPLAND FORESTS - 4000 Series MAP

KURZ, HAROLD, TRUSTEE
20PZ00107 SMALL SCALE AMENDMENT 20S.11



1:4,800 or 1 inch = 400 feet

This map was compiled from recorded documents and does not reflect an actual survey. The Brevard County Board of County Commissioners does not assume responsibility for errors or omissions hereon.

Produced by BoCC - GIS Date: 11/17/2020

SJRWMD FLUCCS Upland Forests

- Upland Coniferous Forest - 4100 Series
- Upland Hardwood Forest - 4200 Series
- Upland Mixed Forest - 4300 Series
- Tree Plantations - 4400 Series

Subject Property

Parcels