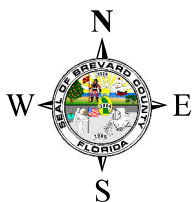
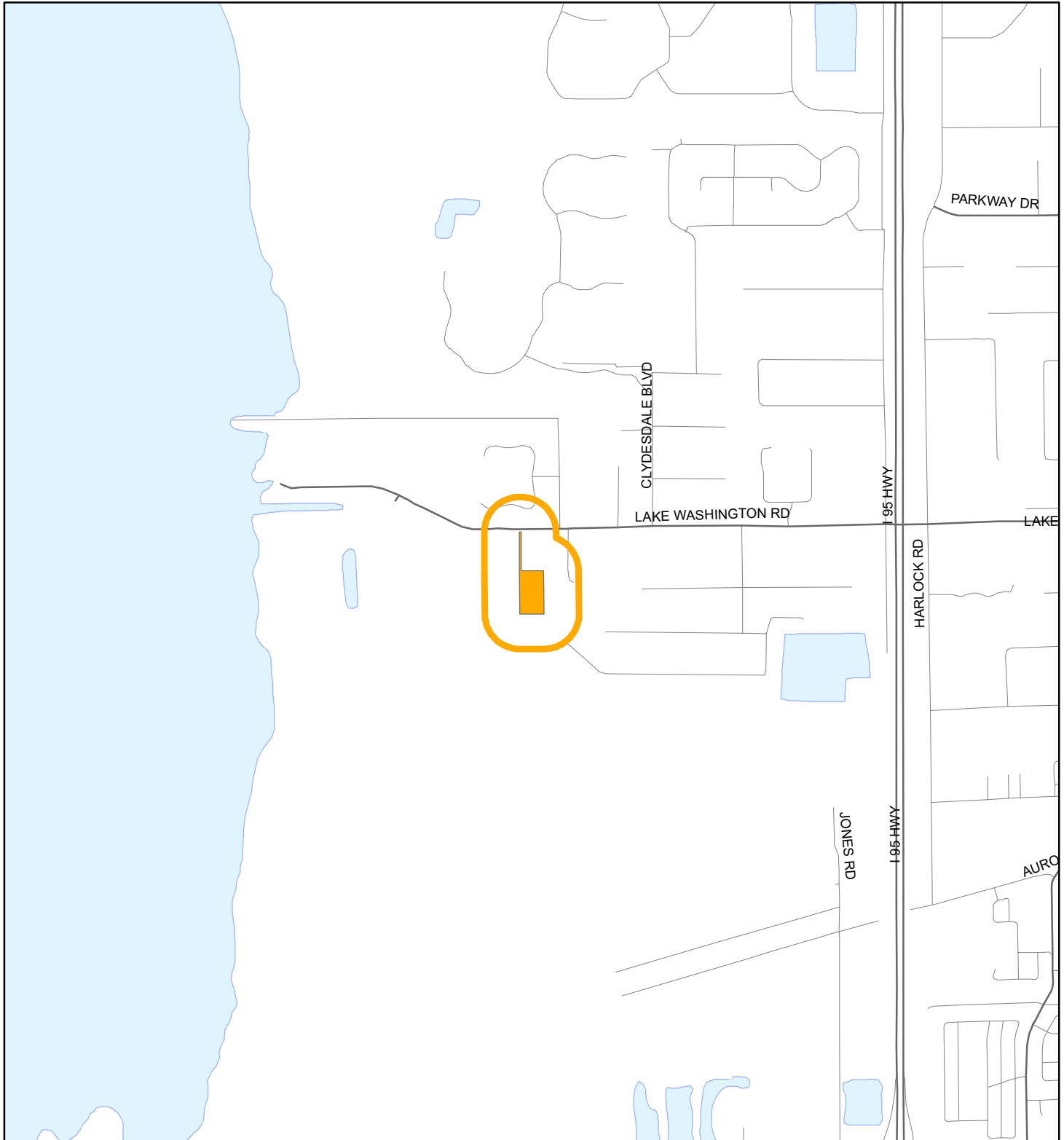


# LOCATION MAP

DARNELL, THOMAS R. AND RACHEL  
20Z00037





1:24,000 or 1 inch = 2,000 feet

Buffer Distance: 500 feet

This map was compiled from recorded documents and does not reflect an actual survey. The Brevard County Board of County Commissioners does not assume responsibility for errors or omissions hereon.

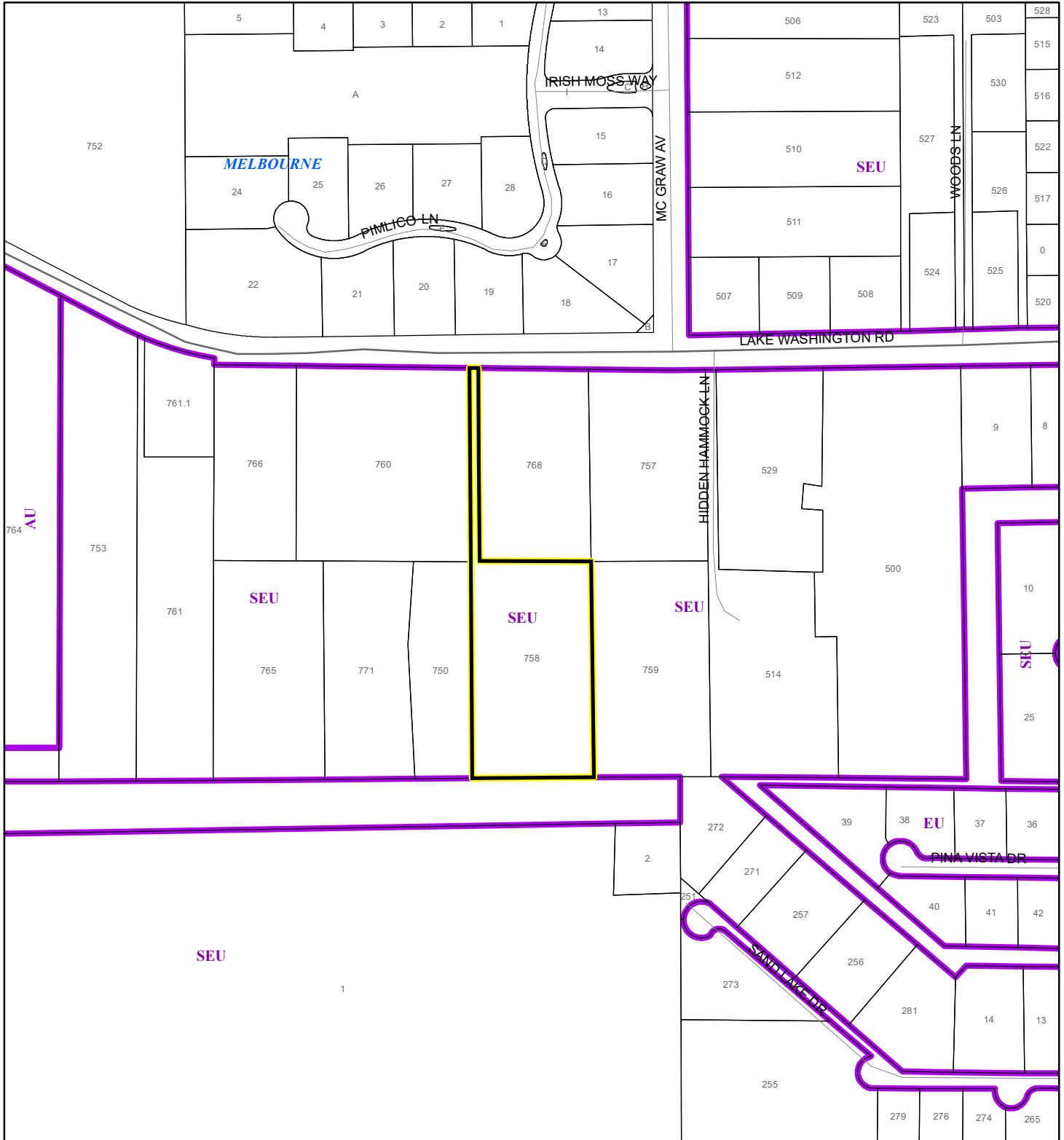
Produced by BoCC - GIS Date: 11/16/2020

 Buffer  
 Subject Property

# ZONING MAP

DARNELL, THOMAS R. AND RACHEL


20Z00037



1:4,800 or 1 inch = 400 feet

This map was compiled from recorded documents and does not reflect an actual survey. The Brevard County Board of County Commissioners does not assume responsibility for errors or omissions hereon.

Produced by BoCC - GIS Date: 11/16/2020

 Subject Property

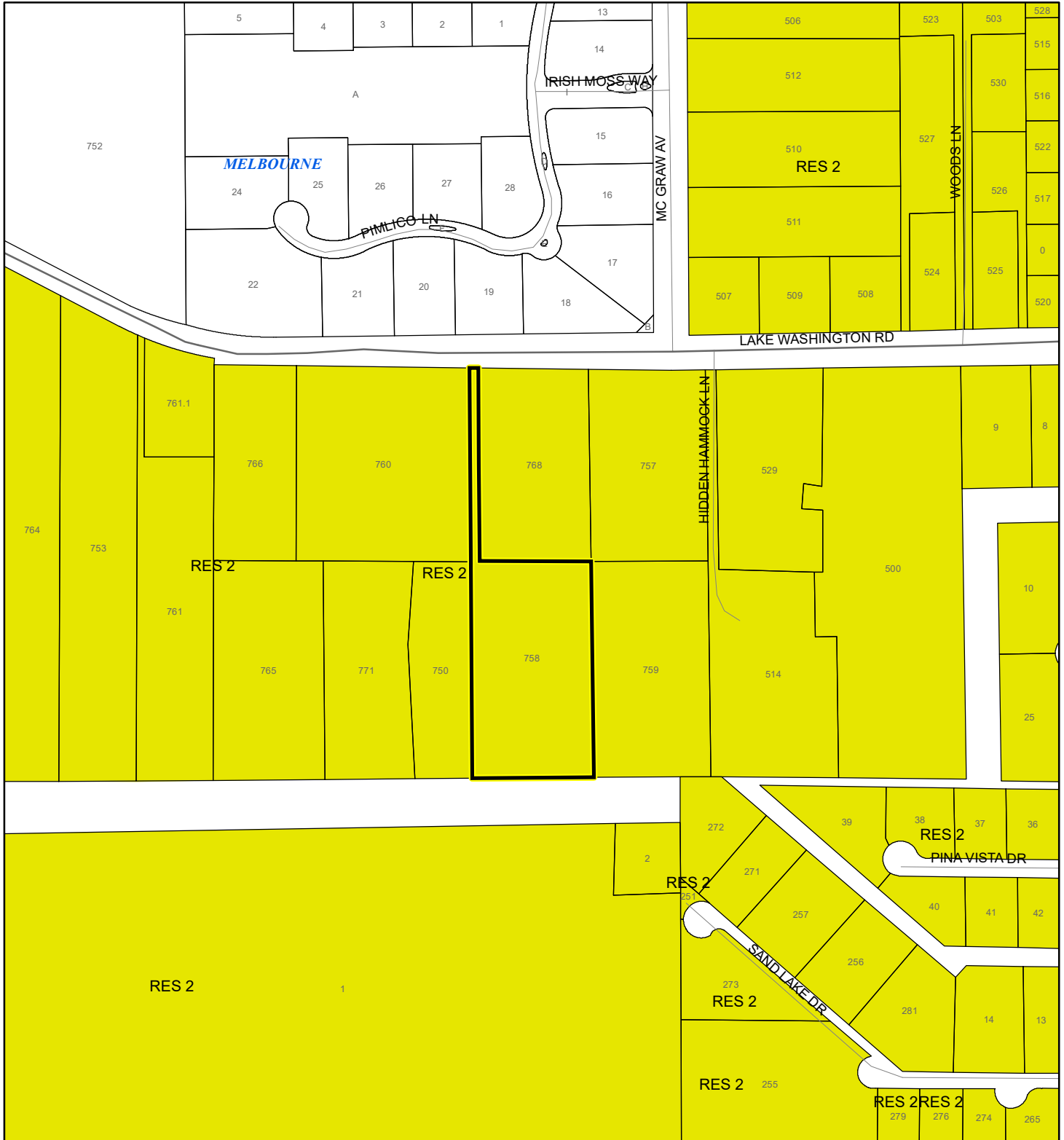
 Parcels

 Zoning



# FUTURE LAND USE MAP

DARNELL, THOMAS R. AND RACHEL

20Z00037



1:4,800 or 1 inch = 400 feet

 Subject Property  
 Parcels

This map was compiled from recorded documents and does not reflect an actual survey. The Brevard County Board of County Commissioners does not assume responsibility for errors or omissions hereon.

Produced by BoCC - GIS Date: 11/16/2020



# AERIAL MAP

DARNELL, THOMAS R. AND RACHEL

20Z00037




1:4,800 or 1 inch = 400 feet

PHOTO YEAR: 2020

This map was compiled from recorded documents and does not reflect an actual survey. The Brevard County Board of County Commissioners does not assume responsibility for errors or omissions hereon.

Produced by BoCC - GIS Date: 11/16/2020

 Subject Property

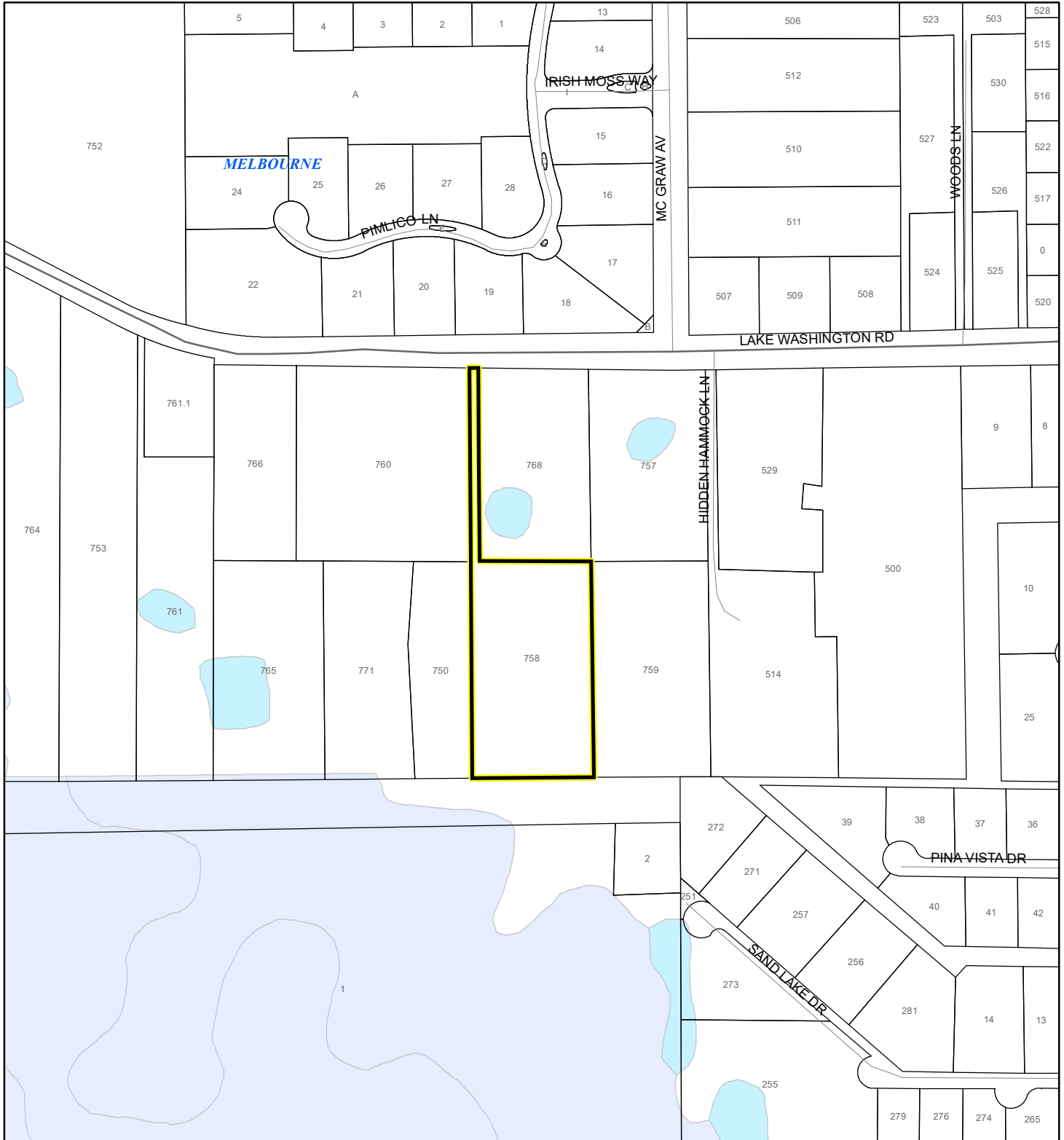
 Parcels



# NWI WETLANDS MAP

DARNELL, THOMAS R. AND RACHEL

20Z00037

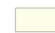




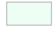

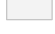




1:4,800 or 1 inch = 400 feet

This map was compiled from recorded documents and does not reflect an actual survey. The Brevard County Board of County Commissioners does not assume responsibility for errors or omissions hereon.

Produced by BoCC - GIS Date: 11/16/2020

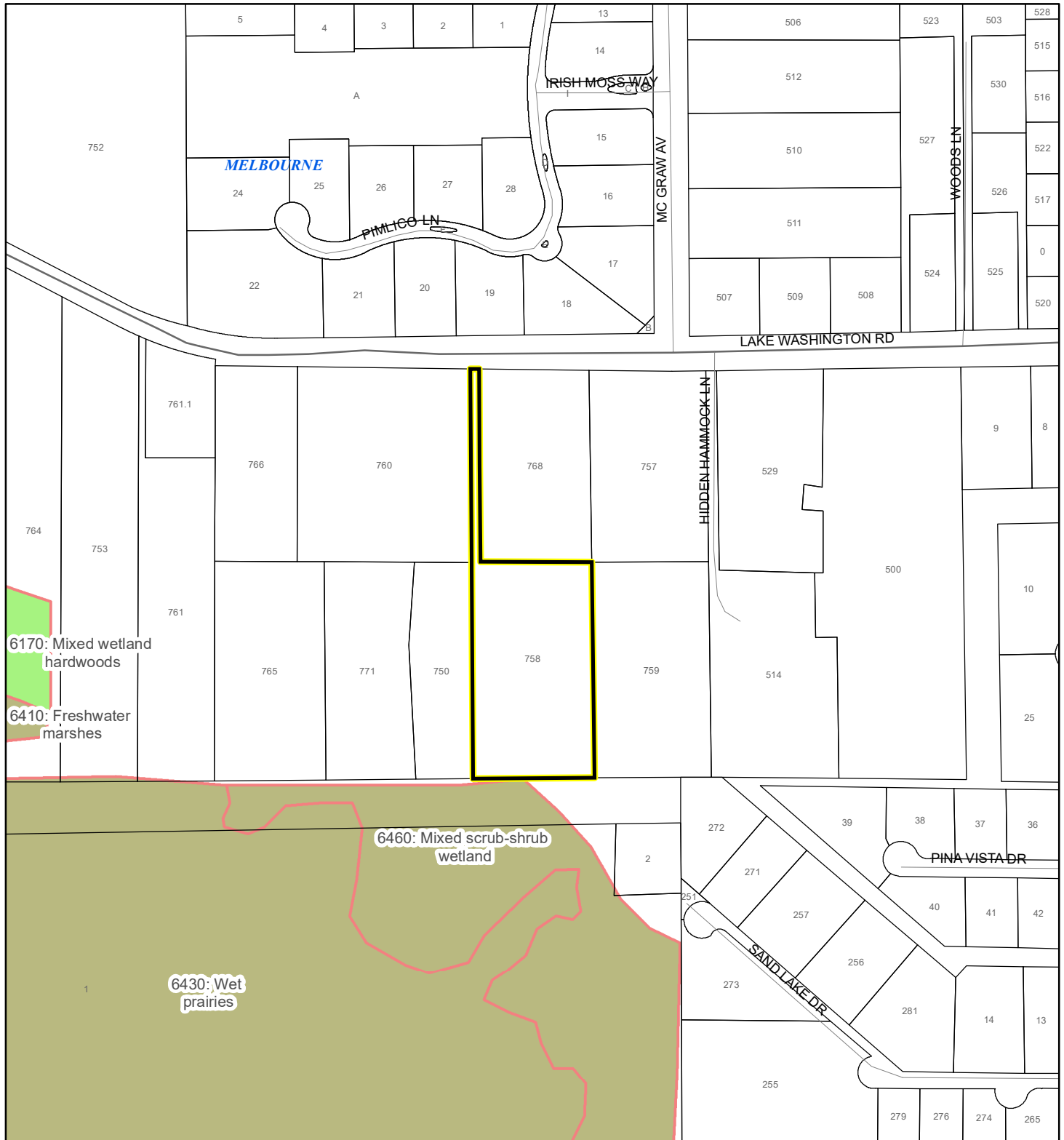
## National Wetlands Inventory (NWI)

 Estuarine and Marine Deepwater	 Freshwater Pond
 Estuarine and Marine Wetland	 Lake
 Freshwater Emergent Wetland	 Other
 Freshwater Forested/Shrub Wetland	 Riverine
	 Subject Property
	 Parcels

# SJRWMD FLUCCS WETLANDS - 6000 Series MAP

DARNELL, THOMAS R. AND RACHEL

20Z00037



1:4,800 or 1 inch = 400 feet

This map was compiled from recorded documents and does not reflect an actual survey. The Brevard County Board of County Commissioners does not assume responsibility for errors or omissions hereon.

Produced by BoCC - GIS Date: 11/16/2020

## SJRWMD FLUCCS WETLANDS

- Wetland Hardwood Forests - Series 6100
- Wetland Coniferous Forest - Series 6200
- Wetland Forested Mixed - Series 6300
- Vegetated Non-Forested Wetlands - Series 6400
- Non-Vegetated Wetland - Series 6500

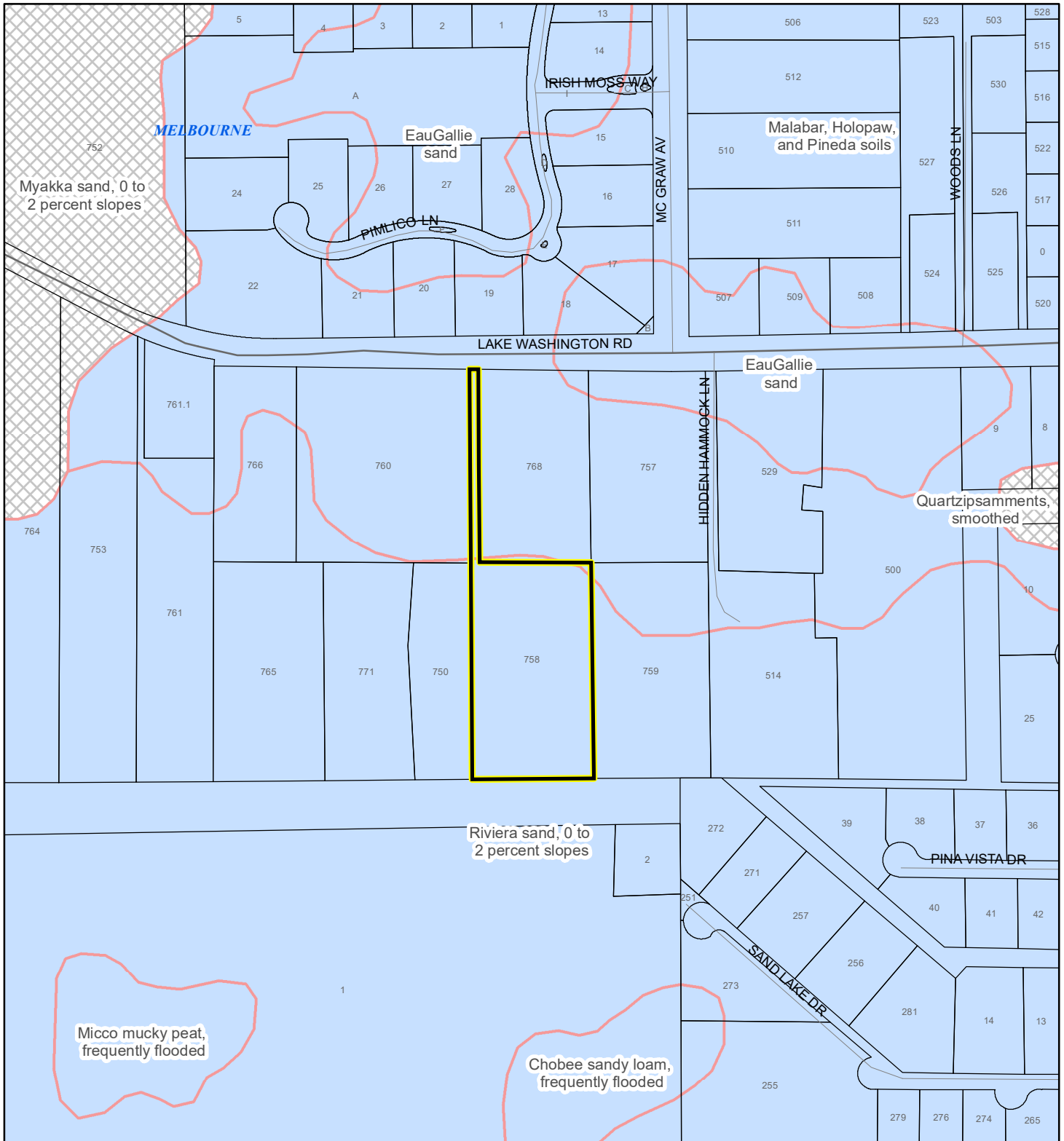
Subject Property

Parcels

# USDA SCSSS SOILS MAP

DARNELL, THOMAS R. AND RACHEL

20Z00037



1:4,800 or 1 inch = 400 feet

This map was compiled from recorded documents and does not reflect an actual survey. The Brevard County Board of County Commissioners does not assume responsibility for errors or omissions hereon.

Produced by BoCC - GIS Date: 11/16/2020

## USDA SCSSS Soils

- Aquifer and Hydric
- Aquifer
- Hydric
- None

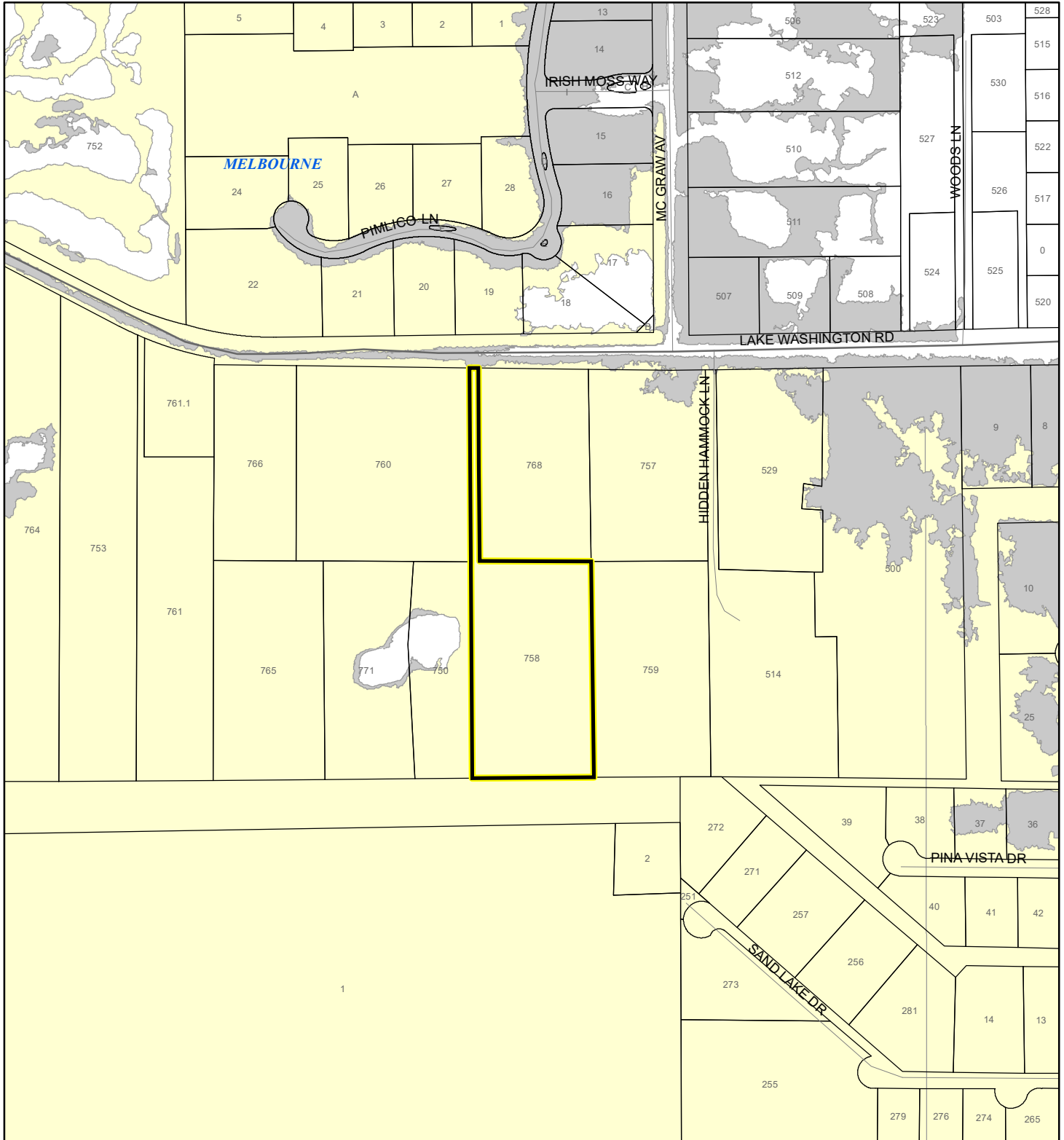
Subject Property

Parcels

# FEMA FLOOD ZONES MAP

DARNELL, THOMAS R. AND RACHEL

20Z00037



1:4,800 or 1 inch = 400 feet

This map was compiled from recorded documents and does not reflect an actual survey. The Brevard County Board of County Commissioners does not assume responsibility for errors or omissions hereon.

Produced by BoCC - GIS Date: 11/16/2020

## FEMA Flood Zones

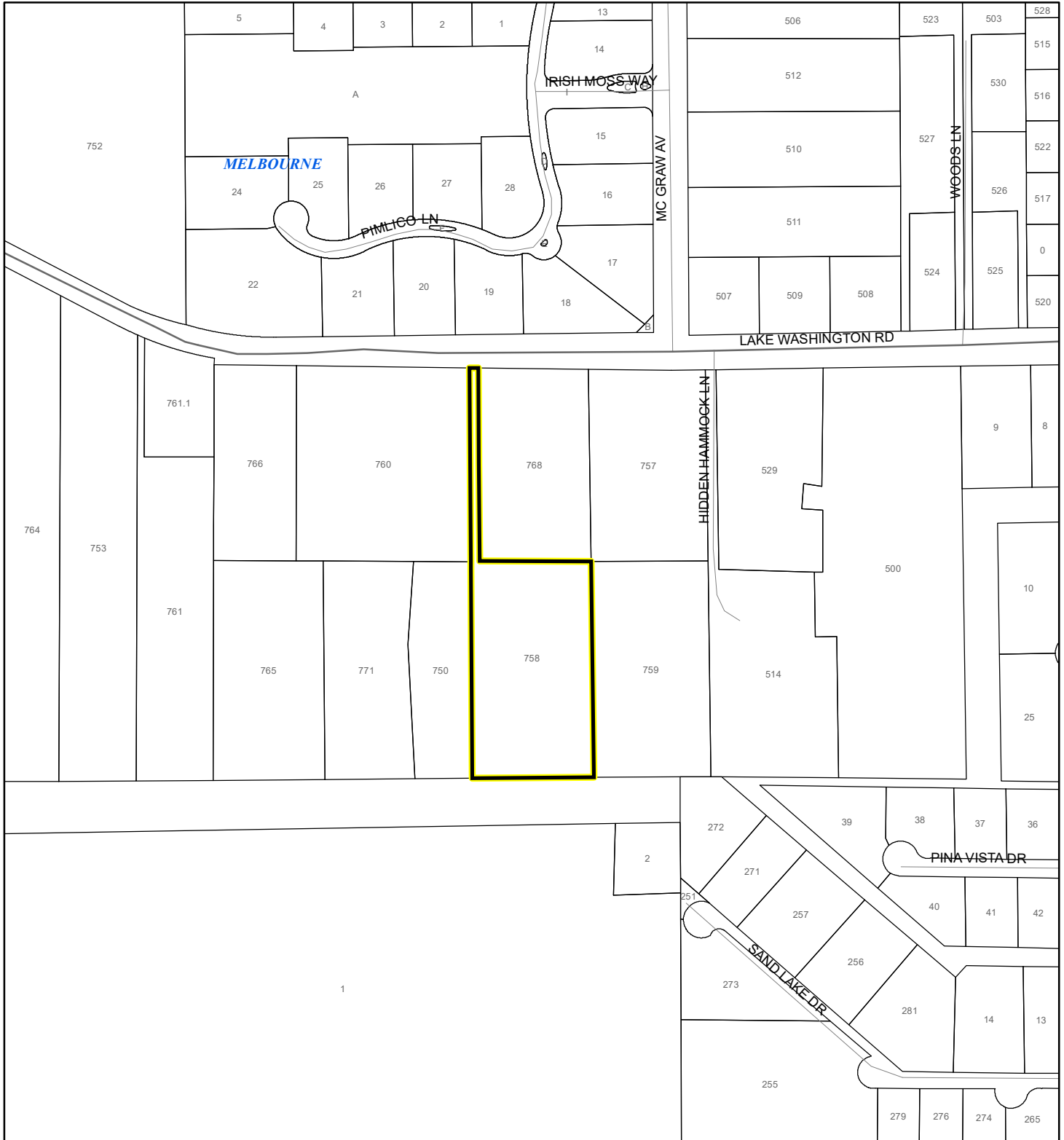
- |  |  |  |
|--|--|--|
| <span style="display:inline-block; width:15px; height:15px; background-color:lightcoral; border:1px solid black;"></span> A  | <span style="display:inline-block; width:15px; height:15px; background-color:yellow; border:1px solid black;"></span> AO         | <span style="display:inline-block; width:15px; height:15px; background-color:lightgrey; border:1px solid black;"></span> X                     |
| <span style="display:inline-block; width:15px; height:15px; background-color:lightyellow; border:1px solid black;"></span> AE  | <span style="display:inline-block; width:15px; height:15px; background-color:orange; border:1px solid black;"></span> Open Water | <span style="display:inline-block; width:15px; height:15px; background-color:lightgreen; border:1px solid black;"></span> X Protected By Levee |
| <span style="display:inline-block; width:15px; height:15px; background-color:lightblue; border:1px solid black;"></span> AH  | <span style="display:inline-block; width:15px; height:15px; background-color:lightorange; border:1px solid black;"></span> VE    |  |
| <span style="display:inline-block; width:15px; height:15px; background-color:grey; border:1px solid black;"></span> 0.2 Percent Annual Chance Flood Hazard                           |  |  |
| <span style="display:inline-block; width:15px; height:15px; background-color:lightgrey; border:1px solid black;"></span> 0.2 Percent Annual Chance Flood Hazard Contained in Channel |  |  |
| <span style="display:inline-block; width:15px; height:15px; border-bottom:2px solid black;"></span> Subject Property   |  |  |
| <span style="display:inline-block; width:15px; height:15px; border:1px solid black;"></span> Parcels   |  |  |



# COASTAL HIGH HAZARD AREA MAP

DARNELL, THOMAS R. AND RACHEL

20Z00037



1:4,800 or 1 inch = 400 feet


This map was compiled from recorded documents and does not reflect an actual survey. The Brevard County Board of County Commissioners does not assume responsibility for errors or omissions hereon.

Produced by BoCC - GIS Date: 11/16/2020

 Subject Property

 Parcels

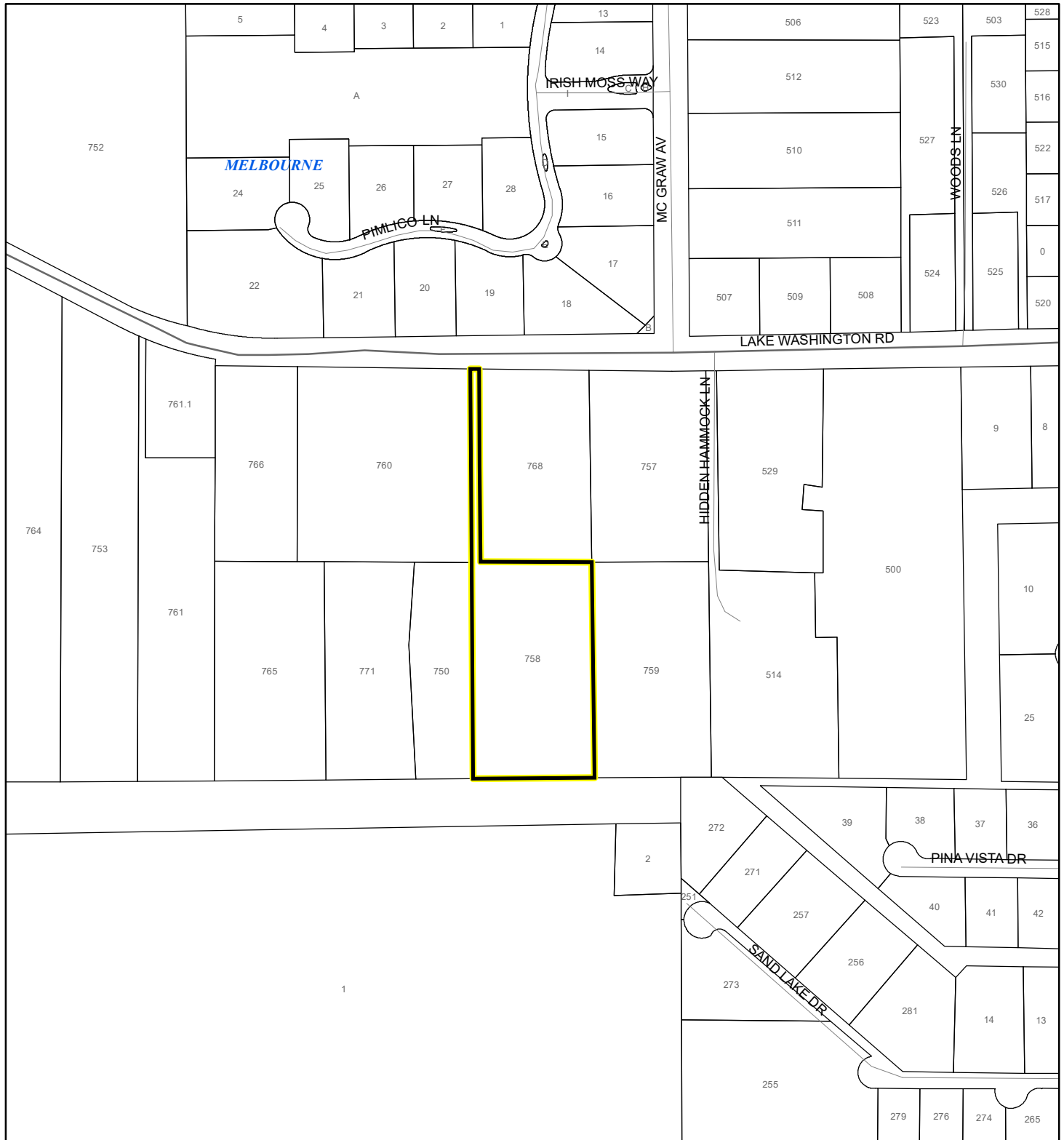
**Coastal High Hazard Area**

 SurgeZoneCat1

# INDIAN RIVER LAGOON SEPTIC OVERLAY MAP

DARNELL, THOMAS R. AND RACHEL

20Z00037



1:4,800 or 1 inch = 400 feet

This map was compiled from recorded documents and does not reflect an actual survey. The Brevard County Board of County Commissioners does not assume responsibility for errors or omissions hereon.

Produced by BoCC - GIS Date: 11/16/2020

 Subject Property

 Parcels

**Septic Overlay**

 40 Meters

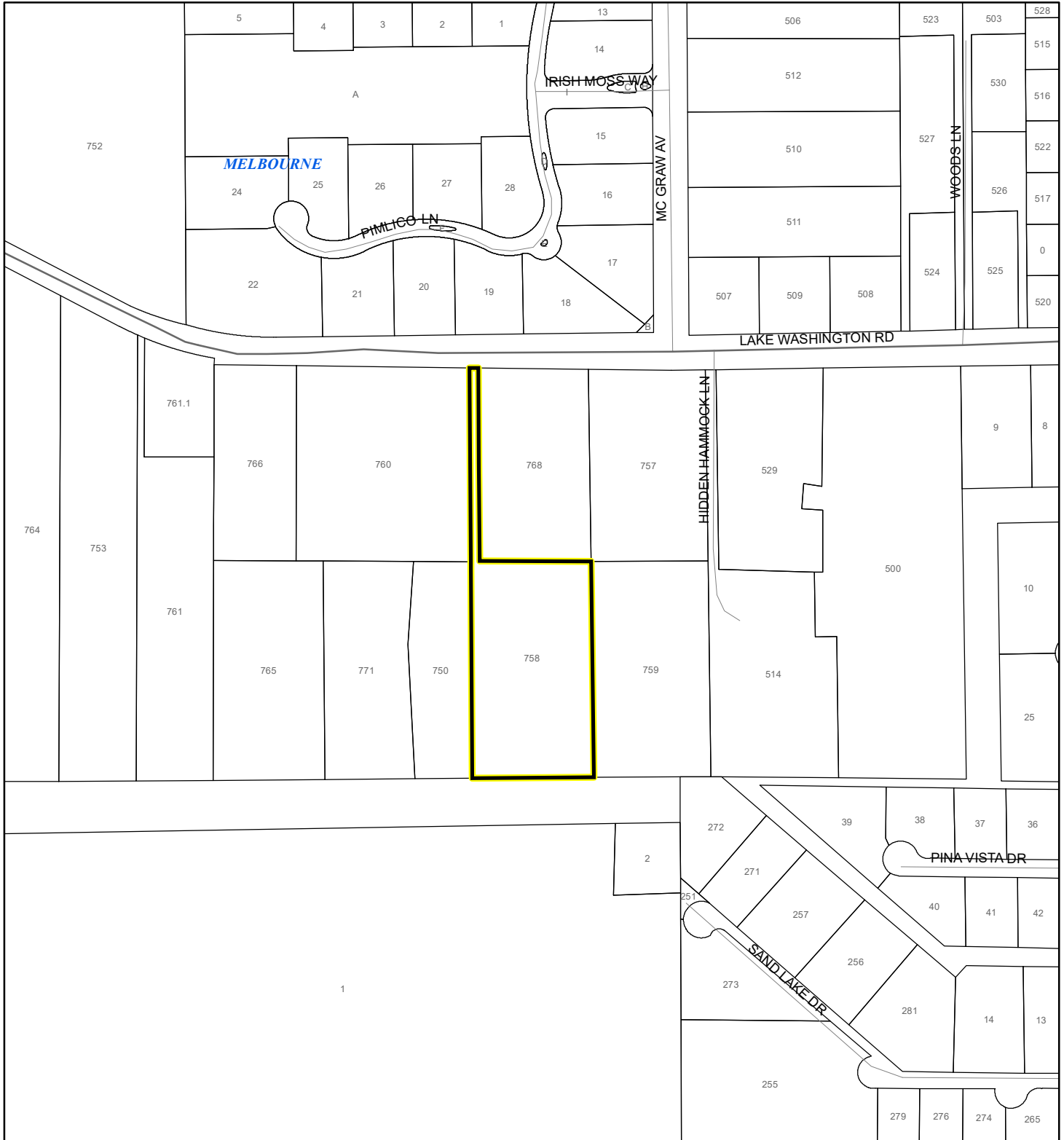
 60 Meters

 All Distances

# EAGLE NESTS MAP

DARNELL, THOMAS R. AND RACHEL

20Z00037



1:4,800 or 1 inch = 400 feet

This map was compiled from recorded documents and does not reflect an actual survey. The Brevard County Board of County Commissioners does not assume responsibility for errors or omissions hereon.

Produced by BoCC - GIS Date: 11/16/2020

 Subject Property

 Parcels

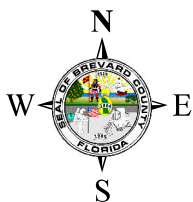
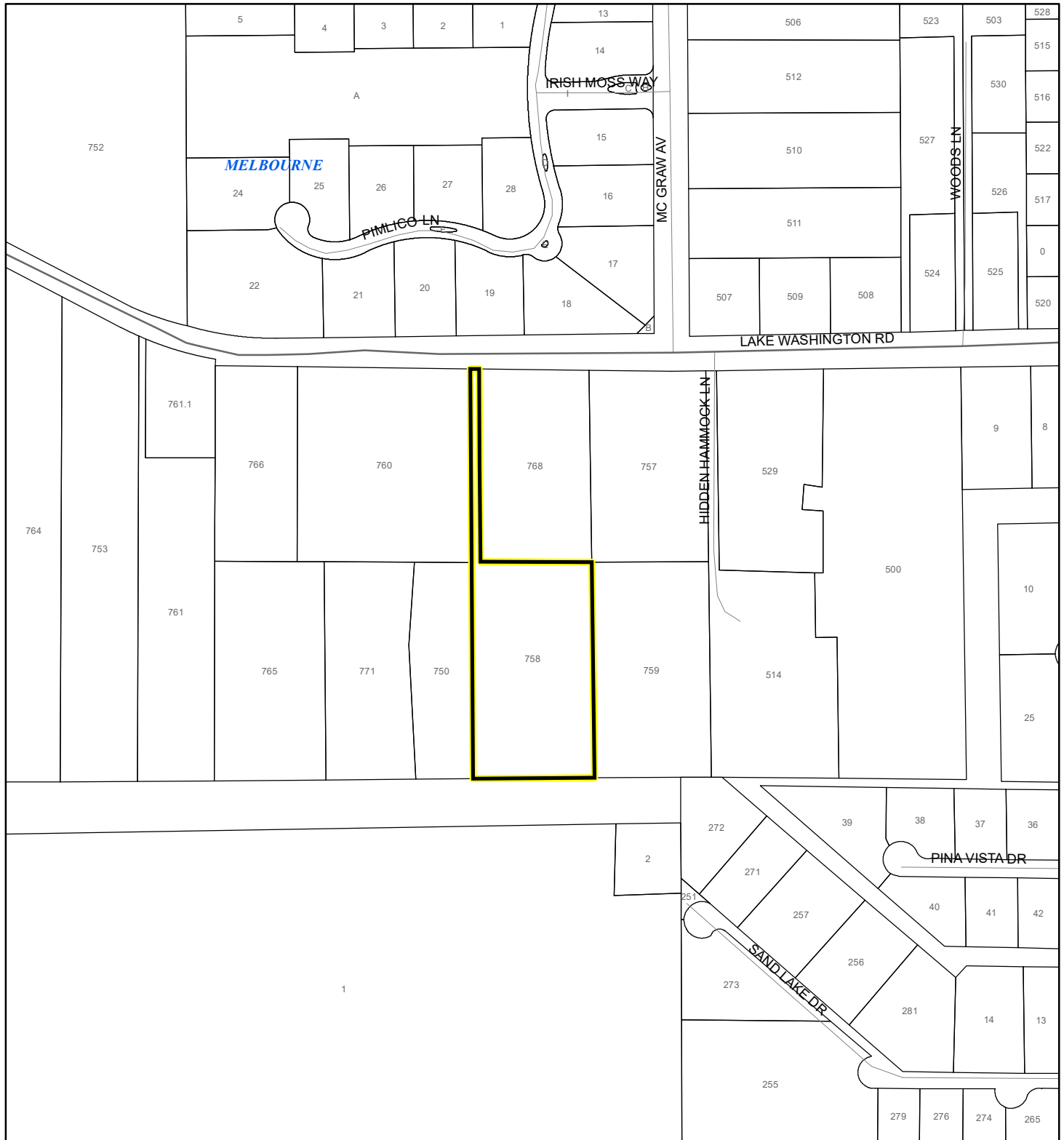


Eagle Nests  
FWS 2010

# SCRUB JAY OCCUPANCY MAP

DARNELL, THOMAS R. AND RACHEL

20Z00037



1:4,800 or 1 inch = 400 feet

This map was compiled from recorded documents and does not reflect an actual survey. The Brevard County Board of County Commissioners does not assume responsibility for errors or omissions hereon.

Produced by BoCC - GIS Date: 11/16/2020

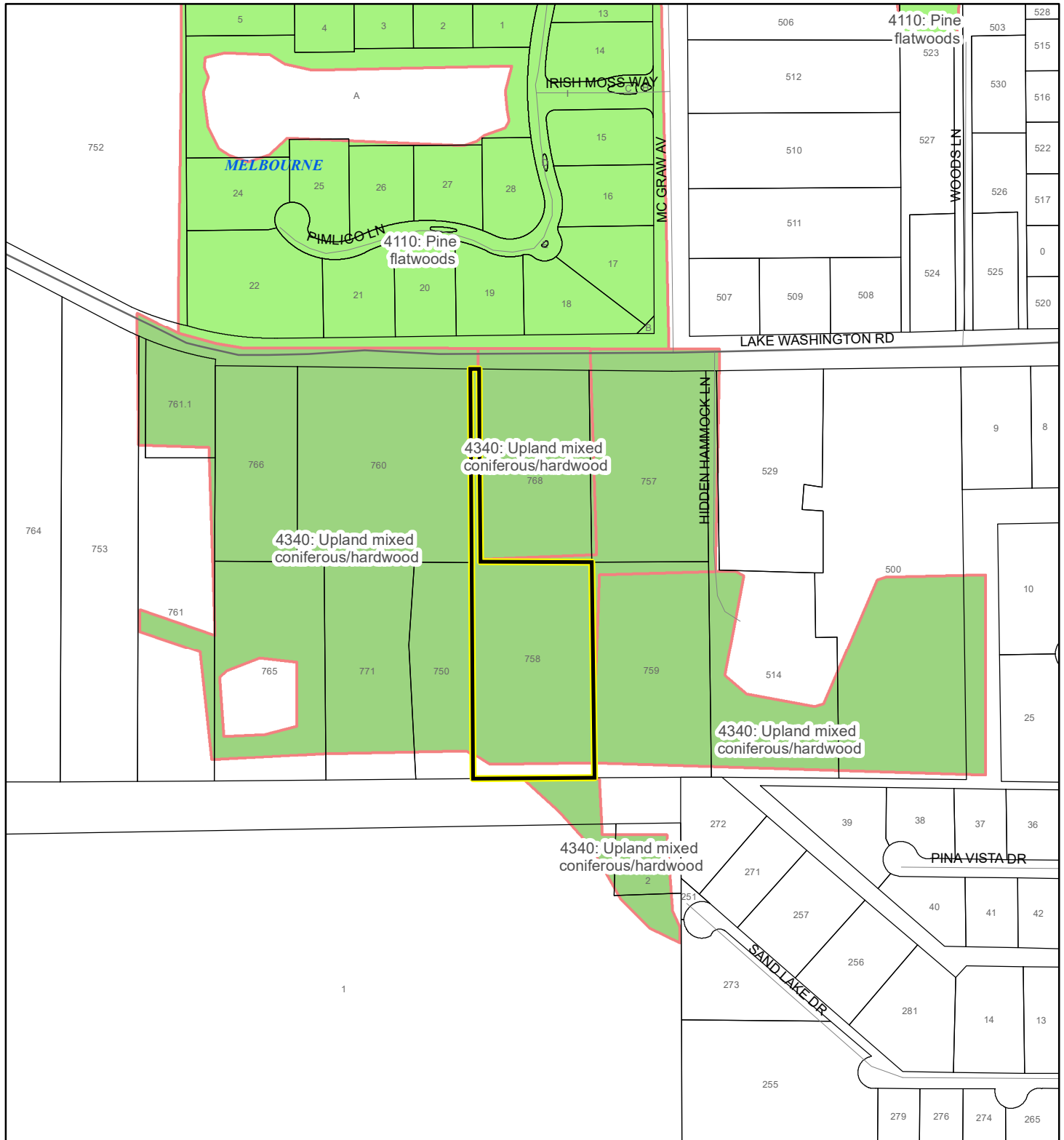
- Subject Property
- Parcels
- Scrub Jay Occupancy



# SJRWMD FLUCCS UPLAND FORESTS - 4000 Series MAP

DARNELL, THOMAS R. AND RACHEL

20Z00037



1:4,800 or 1 inch = 400 feet

This map was compiled from recorded documents and does not reflect an actual survey. The Brevard County Board of County Commissioners does not assume responsibility for errors or omissions hereon.

Produced by BoCC - GIS Date: 11/16/2020

## SJRWMD FLUCCS Upland Forests

- Upland Coniferous Forest - 4100 Series
- Upland Hardwood Forest - 4200 Series
- Upland Mixed Forest - 4300 Series
- Tree Plantations - 4400 Series

Subject Property

Parcels