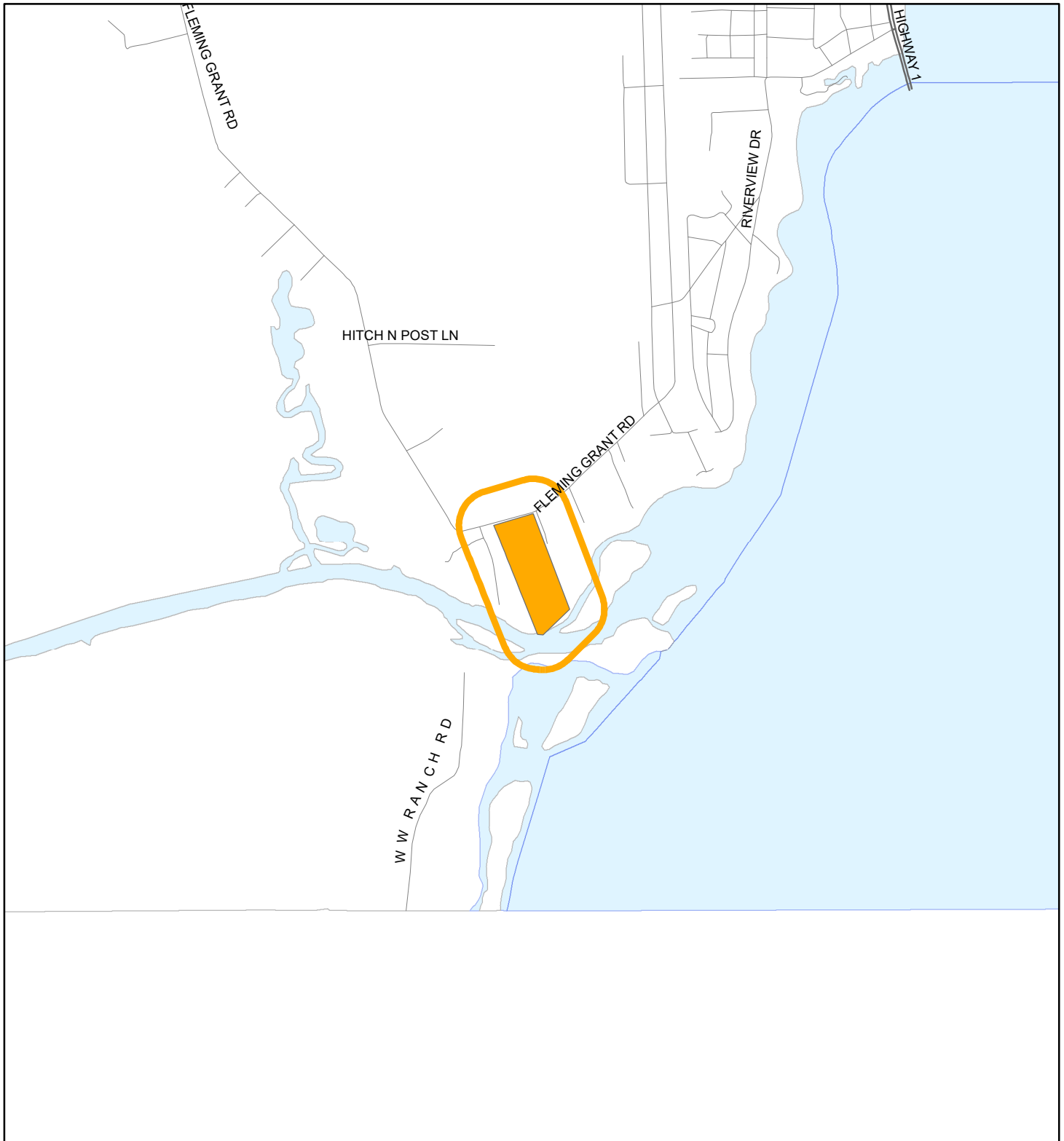


# LOCATION MAP

LAZY RIVER INVESTMENTS, LLC

20Z00030





1:24,000 or 1 inch = 2,000 feet

Buffer Distance: 500 feet

This map was compiled from recorded documents and does not reflect an actual survey. The Brevard County Board of County Commissioners does not assume responsibility for errors or omissions hereon.

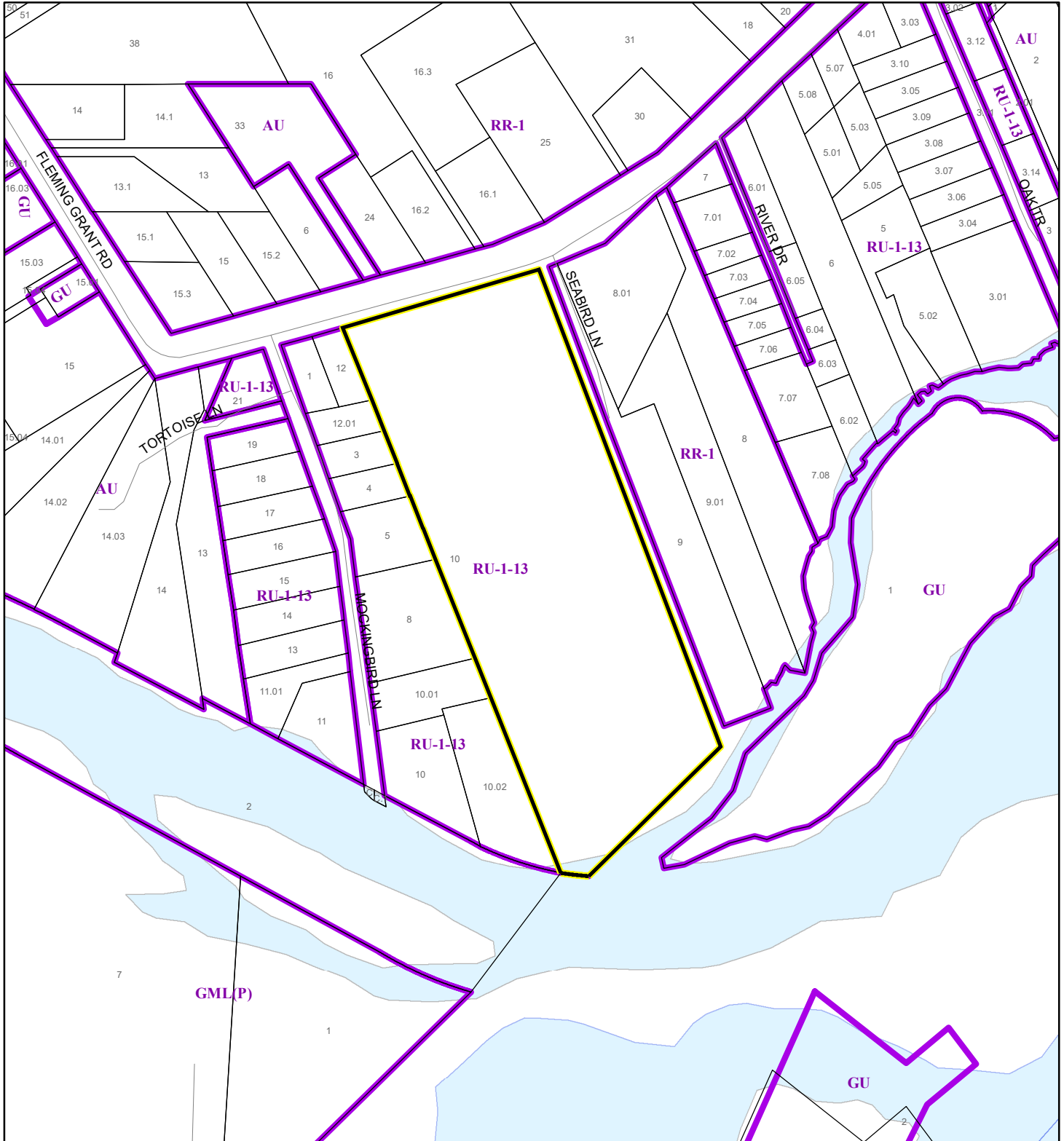
Produced by BoCC - GIS Date: 9/10/2020

 Buffer  
 Subject Property

# ZONING MAP

LAZY RIVER INVESTMENTS, LLC


20Z00030



1:4,800 or 1 inch = 400 feet

This map was compiled from recorded documents and does not reflect an actual survey. The Brevard County Board of County Commissioners does not assume responsibility for errors or omissions hereon.

Produced by BoCC - GIS Date: 9/10/2020

 Subject Property

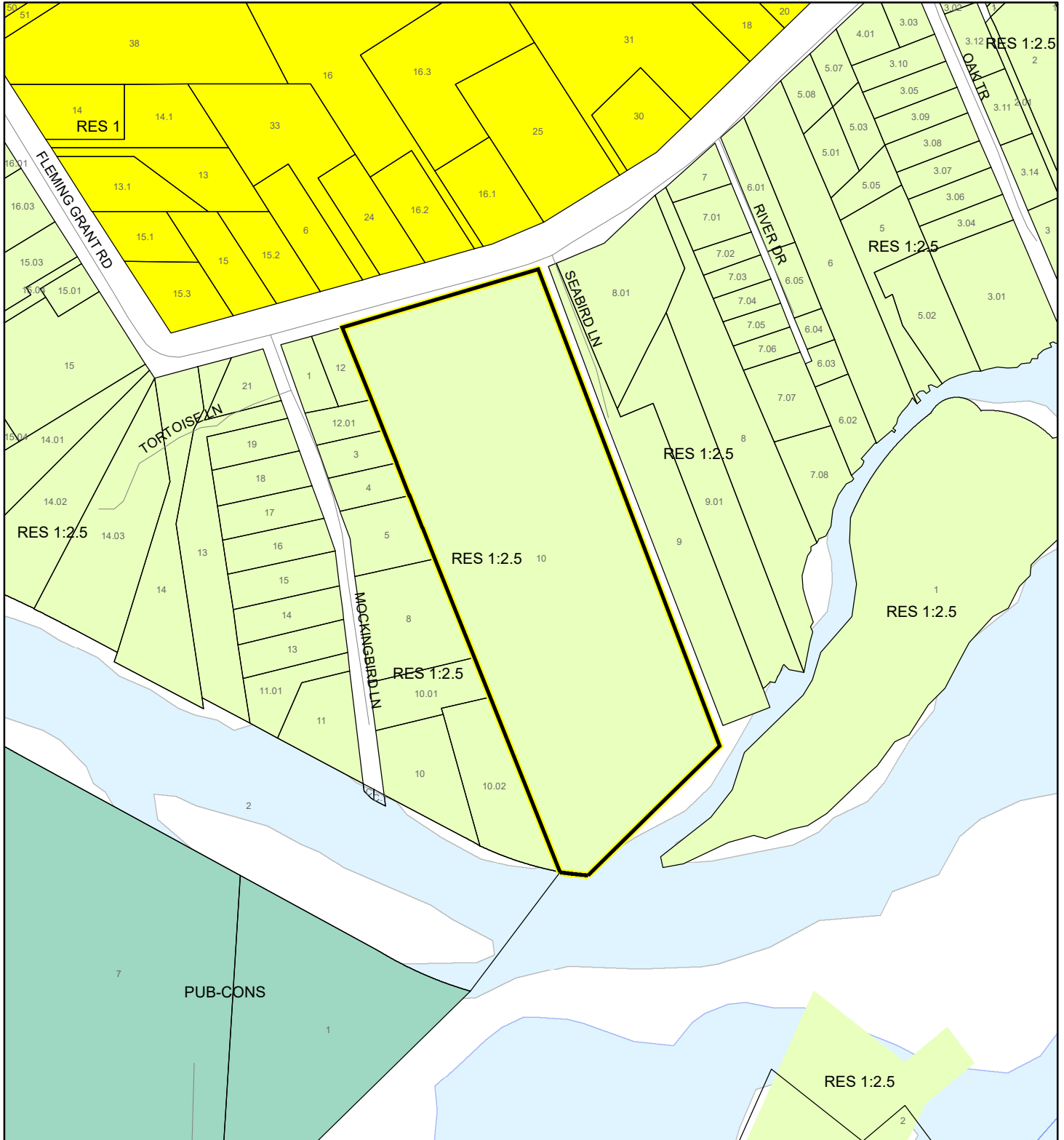
 Parcels

 Zoning



# FUTURE LAND USE MAP

LAZY RIVER INVESTMENTS, LLC

20Z00030



1:4,800 or 1 inch = 400 feet

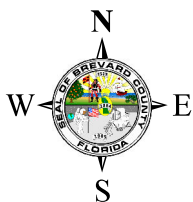
 Subject Property  
 Parcels

This map was compiled from recorded documents and does not reflect an actual survey. The Brevard County Board of County Commissioners does not assume responsibility for errors or omissions hereon.

Produced by BoCC - GIS Date: 9/10/2020



AERIAL MAP  
LAZY RIVER INVESTMENTS, LLC  
20Z00030





1:4,800 or 1 inch = 400 feet

PHOTO YEAR: 2020

This map was compiled from recorded documents and does not reflect an actual survey. The Brevard County Board of County Commissioners does not assume responsibility for errors or omissions hereon.

Produced by BoCC - GIS Date: 9/10/2020

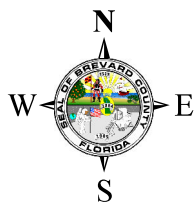
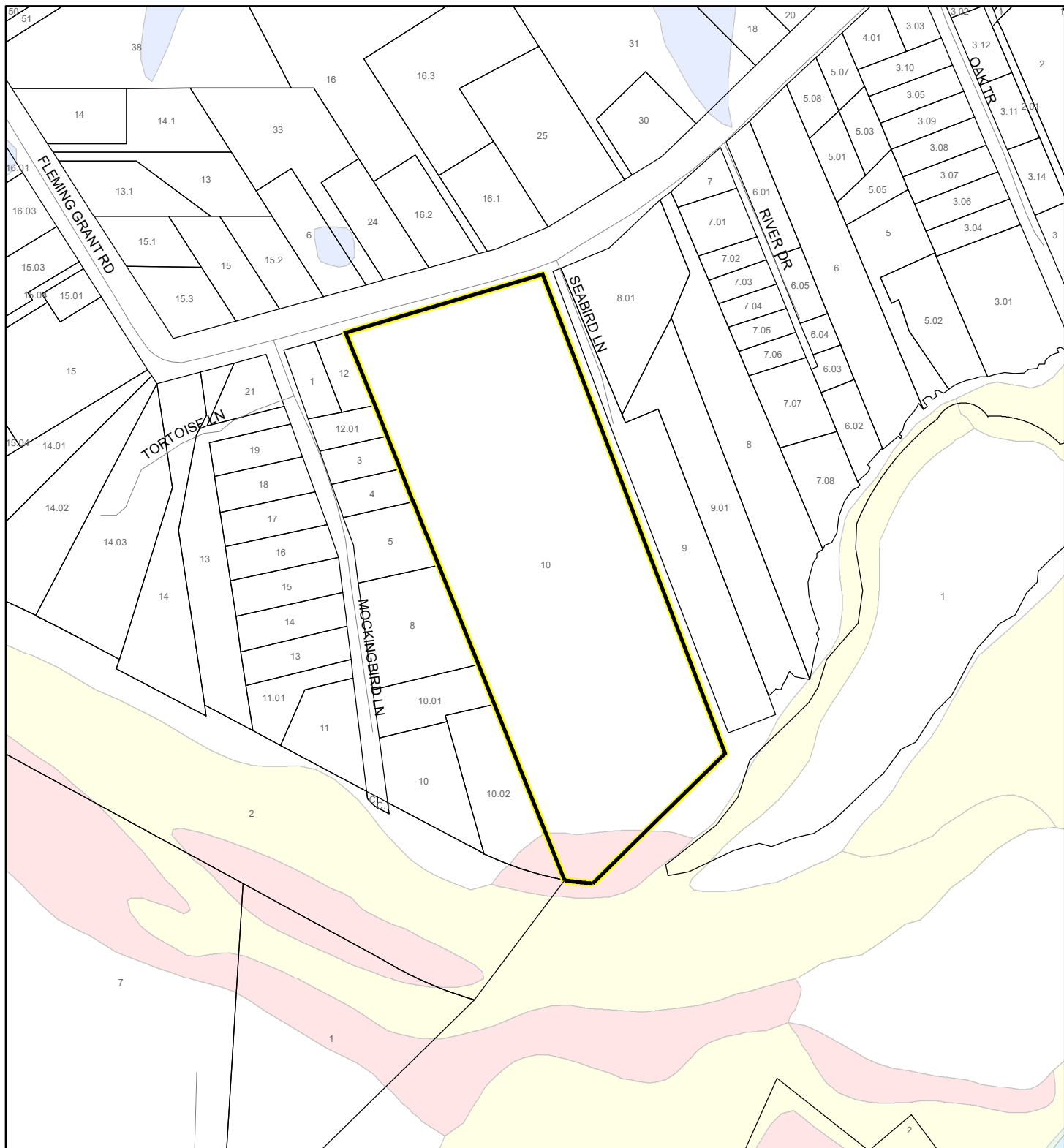
 Subject Property  
 Parcels



# NWI WETLANDS MAP

LAZY RIVER INVESTMENTS, LLC

20Z00030



1:4,800 or 1 inch = 400 feet

This map was compiled from recorded documents and does not reflect an actual survey. The Brevard County Board of County Commissioners does not assume responsibility for errors or omissions hereon.

Produced by BoCC - GIS Date: 9/10/2020

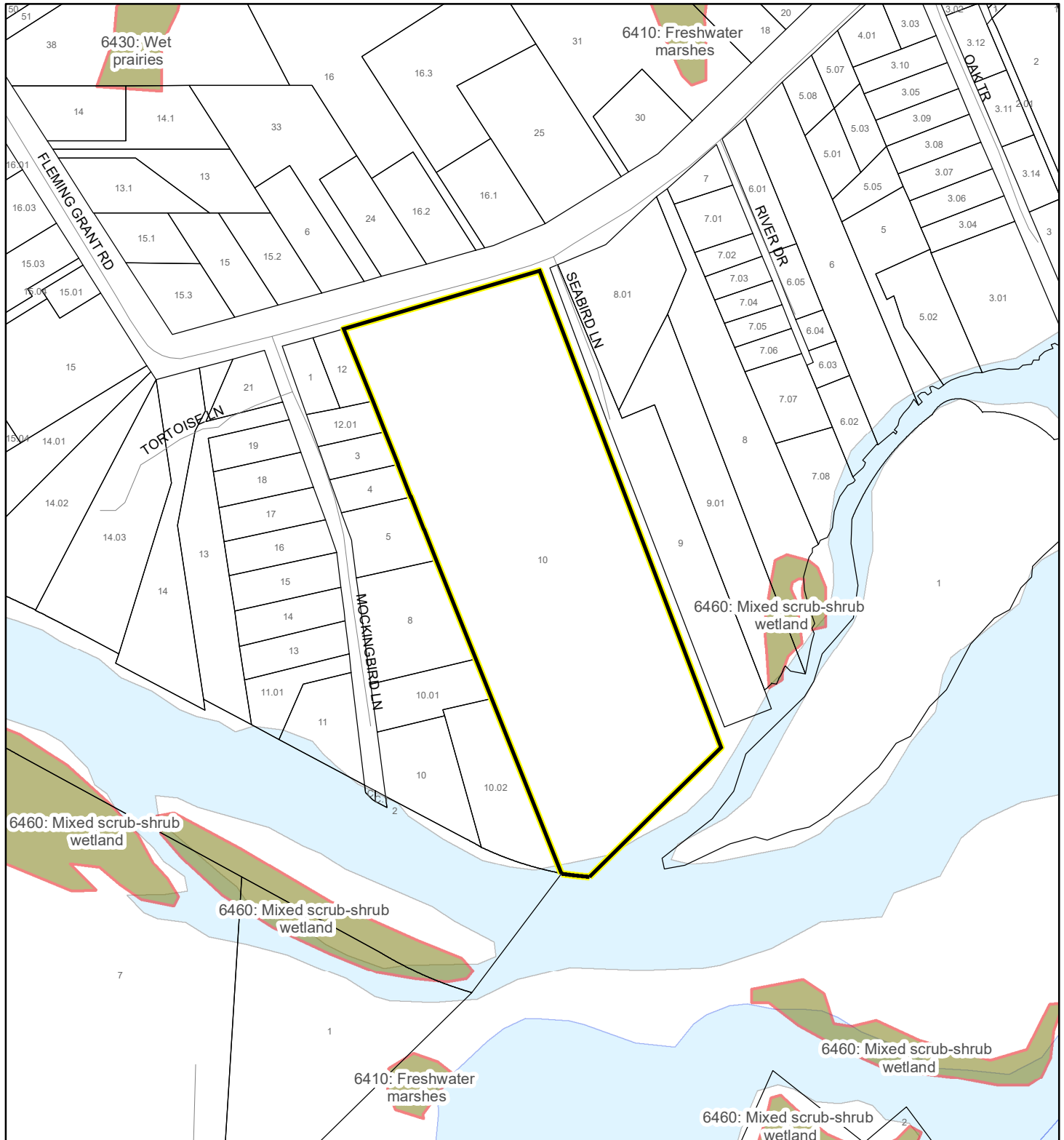
## National Wetlands Inventory (NWI)

Estuarine and Marine Deepwater	Freshwater Pond
Estuarine and Marine Wetland	Lake
Freshwater Emergent Wetland	Other
Freshwater Forested/Shrub Wetland	Riverine
	Subject Property
	Parcels

# SJRWMD FLUCCS WETLANDS - 6000 Series MAP

LAZY RIVER INVESTMENTS, LLC

20Z00030



1:4,800 or 1 inch = 400 feet

This map was compiled from recorded documents and does not reflect an actual survey. The Brevard County Board of County Commissioners does not assume responsibility for errors or omissions hereon.

Produced by BoCC - GIS Date: 9/10/2020

## SJRWMD FLUCCS WETLANDS

- Wetland Hardwood Forests - Series 6100
- Wetland Coniferous Forest - Series 6200
- Wetland Forested Mixed - Series 6300
- Vegetated Non-Forested Wetlands - Series 6400
- Non-Vegetated Wetland - Series 6500

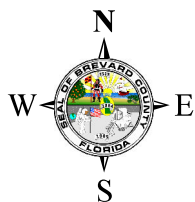
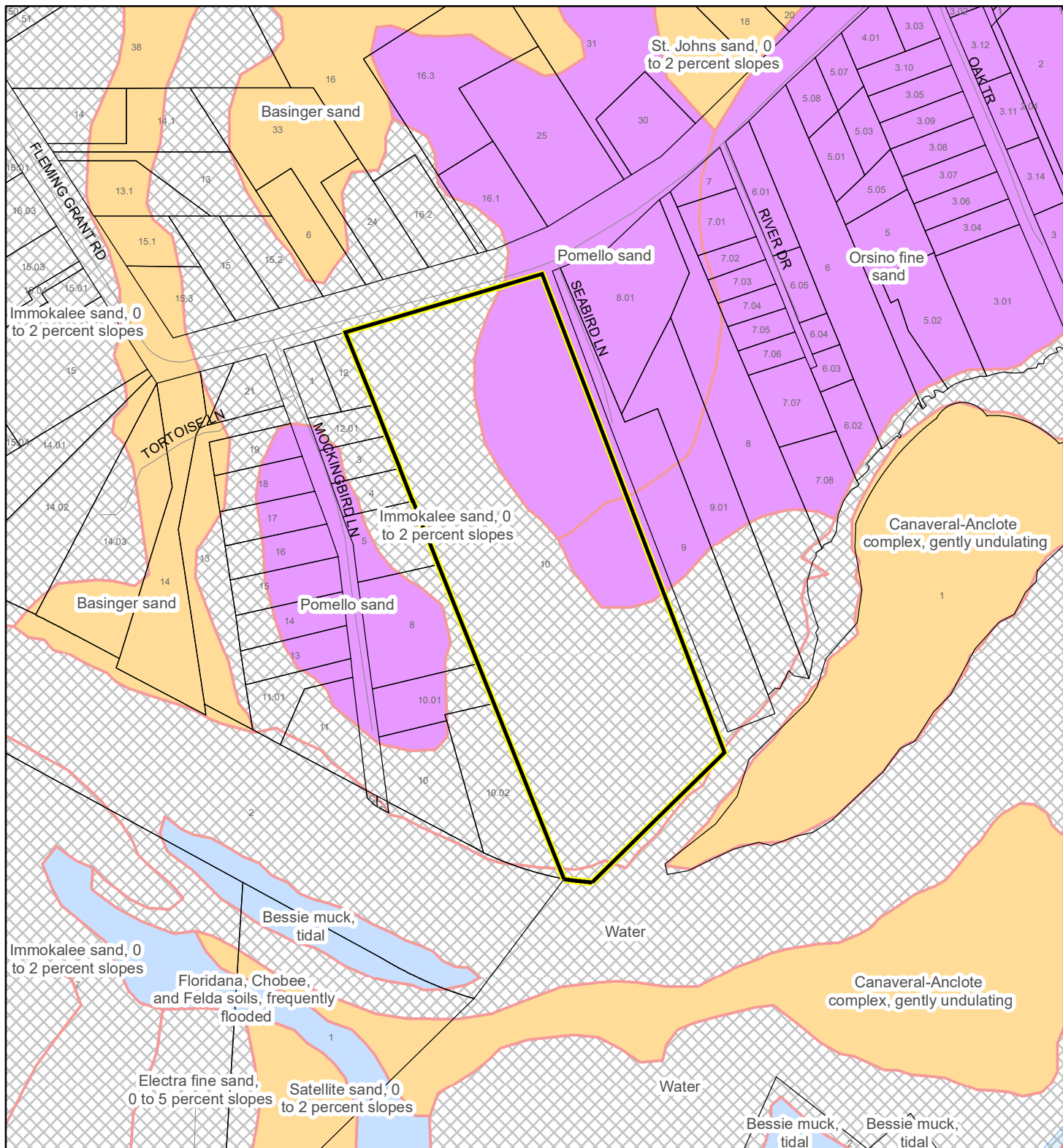
Subject Property

Parcels

# USDA SCSSS SOILS MAP

LAZY RIVER INVESTMENTS, LLC

20Z00030



1:4,800 or 1 inch = 400 feet

This map was compiled from recorded documents and does not reflect an actual survey. The Brevard County Board of County Commissioners does not assume responsibility for errors or omissions hereon.

Produced by BoCC - GIS Date: 9/10/2020

## USDA SCSSS Soils

- Aquifer and Hydric
- Aquifer
- Hydric
- None

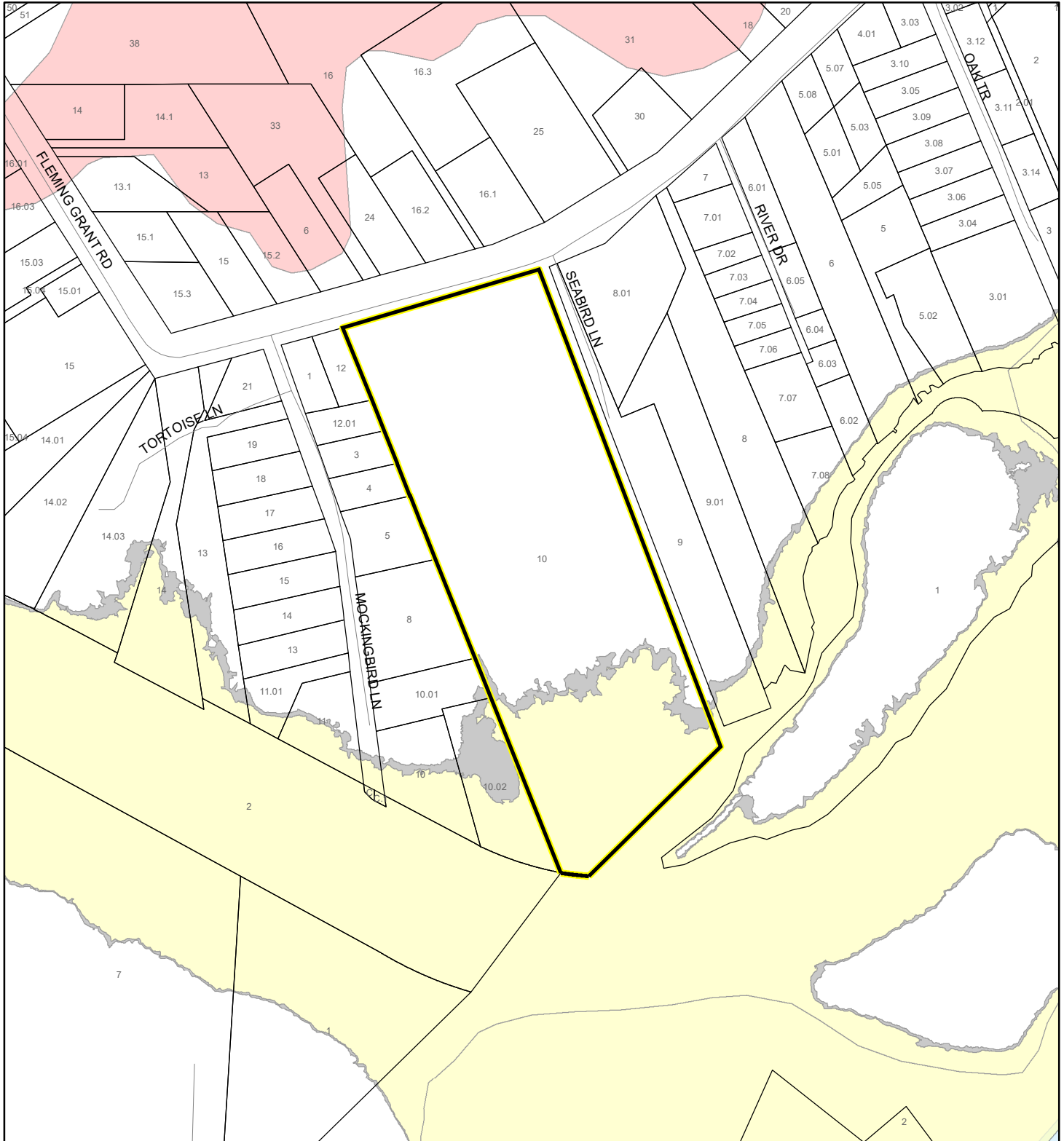
Subject Property

Parcels

# FEMA FLOOD ZONES MAP

LAZY RIVER INVESTMENTS, LLC

20Z00030




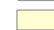

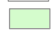








1:4,800 or 1 inch = 400 feet

This map was compiled from recorded documents and does not reflect an actual survey. The Brevard County Board of County Commissioners does not assume responsibility for errors or omissions hereon.

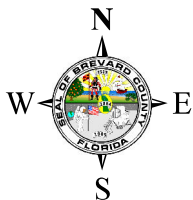
Produced by BoCC - GIS Date: 9/10/2020

## FEMA Flood Zones

	A		AO		X
	AE		Open Water		X Protected By Levee
	AH		VE		
	0.2 Percent Annual Chance Flood Hazard				
	0.2 Percent Annual Chance Flood Hazard Contained in Channel				
	Subject Property				Parcels



20Z00030



1:4,800      or 1 inch = 400 feet


This map was compiled from recorded documents and does not reflect an actual survey. The Brevard County Board of County Commissioners does not assume responsibility for errors or omissions hereon.

Produced by BoCC - GIS    Date: 9/10/2020

**Subject Property**

Parcels

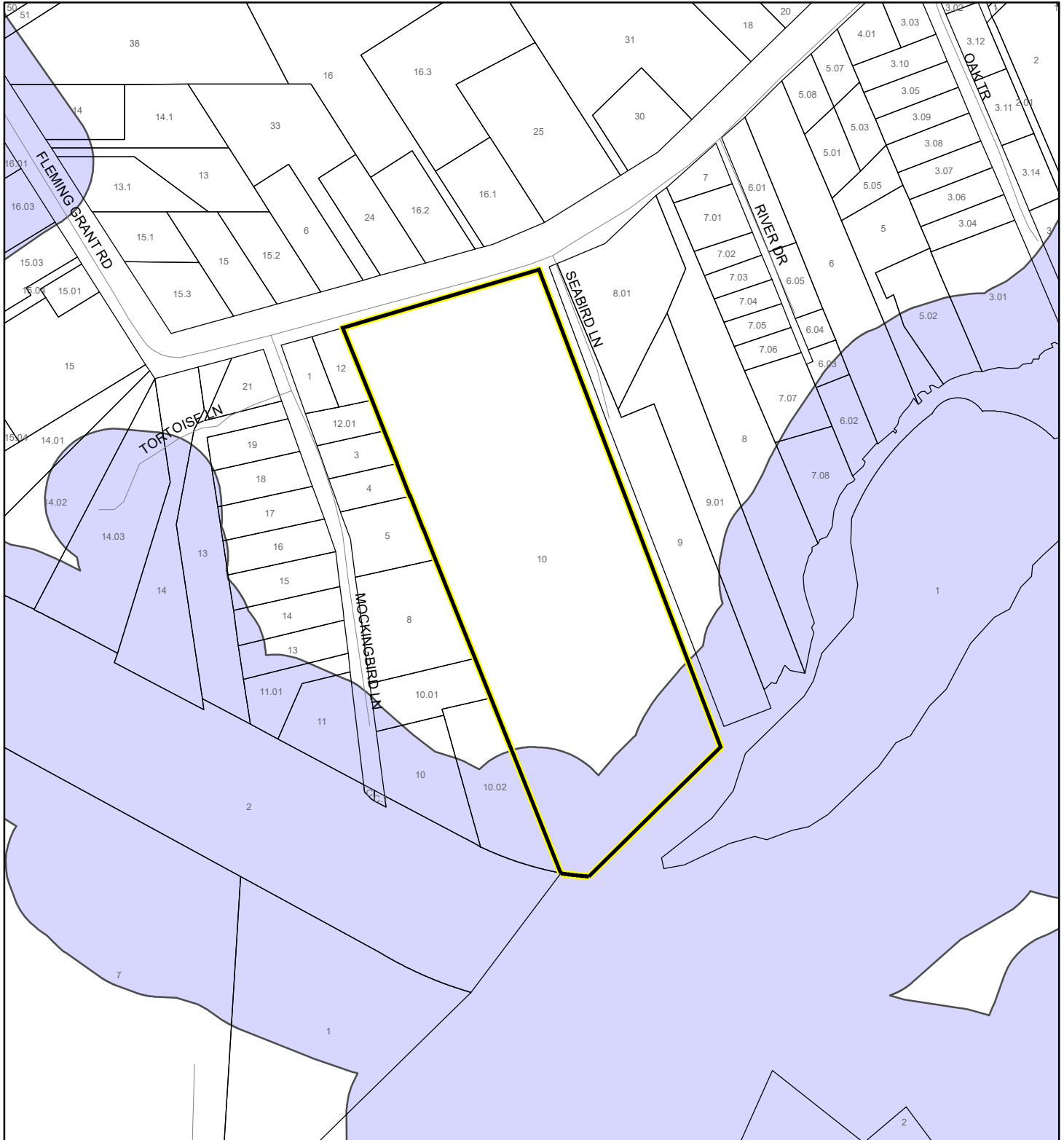
### Coastal High Hazard Area

 SurgeZoneCat1

# INDIAN RIVER LAGOON SEPTIC OVERLAY MAP

LAZY RIVER INVESTMENTS, LLC

20Z00030



1:4,800 or 1 inch = 400 feet

This map was compiled from recorded documents and does not reflect an actual survey. The Brevard County Board of County Commissioners does not assume responsibility for errors or omissions hereon.

Produced by BoCC - GIS Date: 9/10/2020

 Subject Property

 Parcels

**Septic Overlay**

 40 Meters

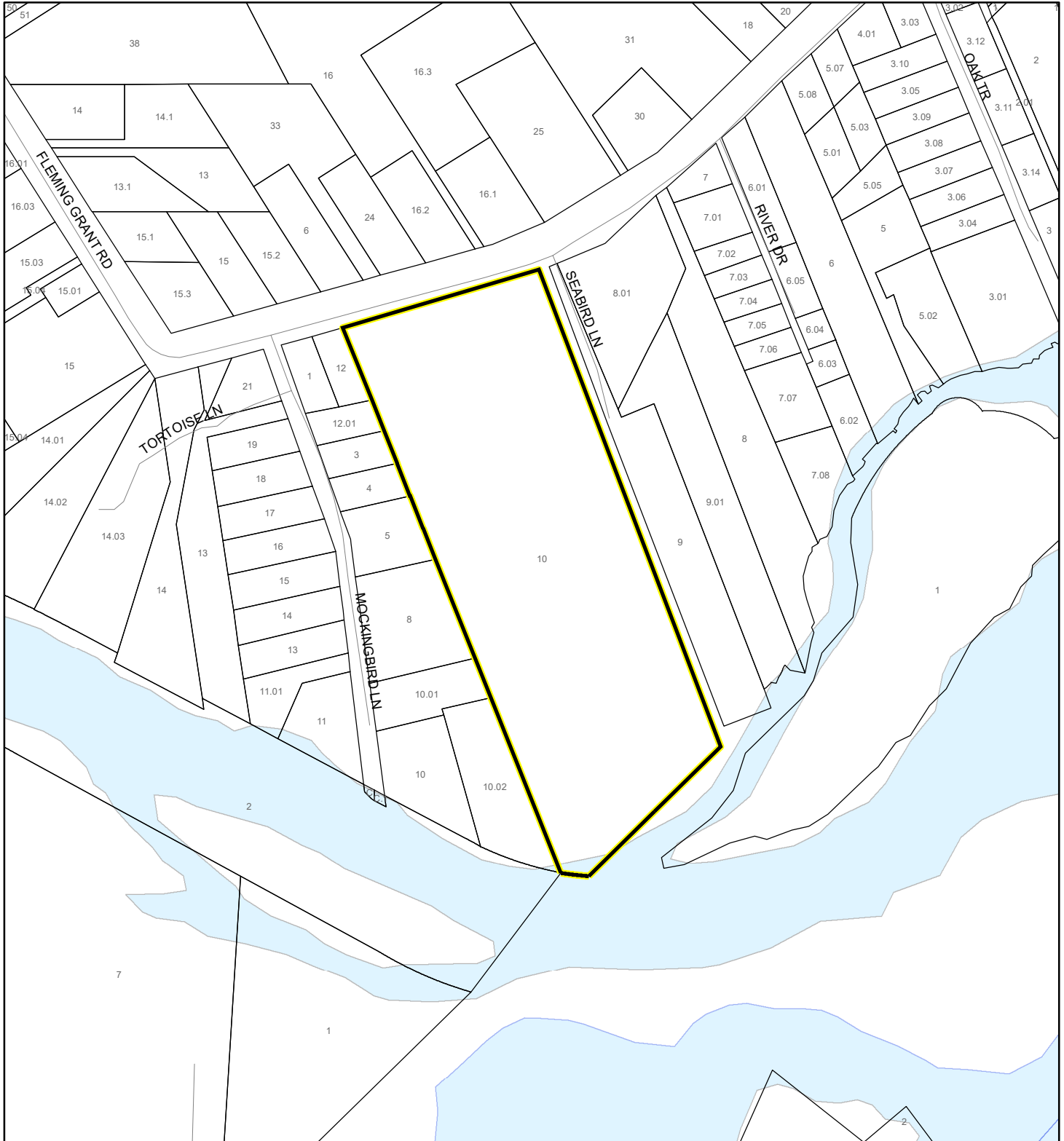
 60 Meters

 All Distances

# EAGLE NESTS MAP

LAZY RIVER INVESTMENTS, LLC

20Z00030




1:4,800 or 1 inch = 400 feet

This map was compiled from recorded documents and does not reflect an actual survey. The Brevard County Board of County Commissioners does not assume responsibility for errors or omissions hereon.

Produced by BoCC - GIS Date: 9/10/2020

 Subject Property

 Parcels

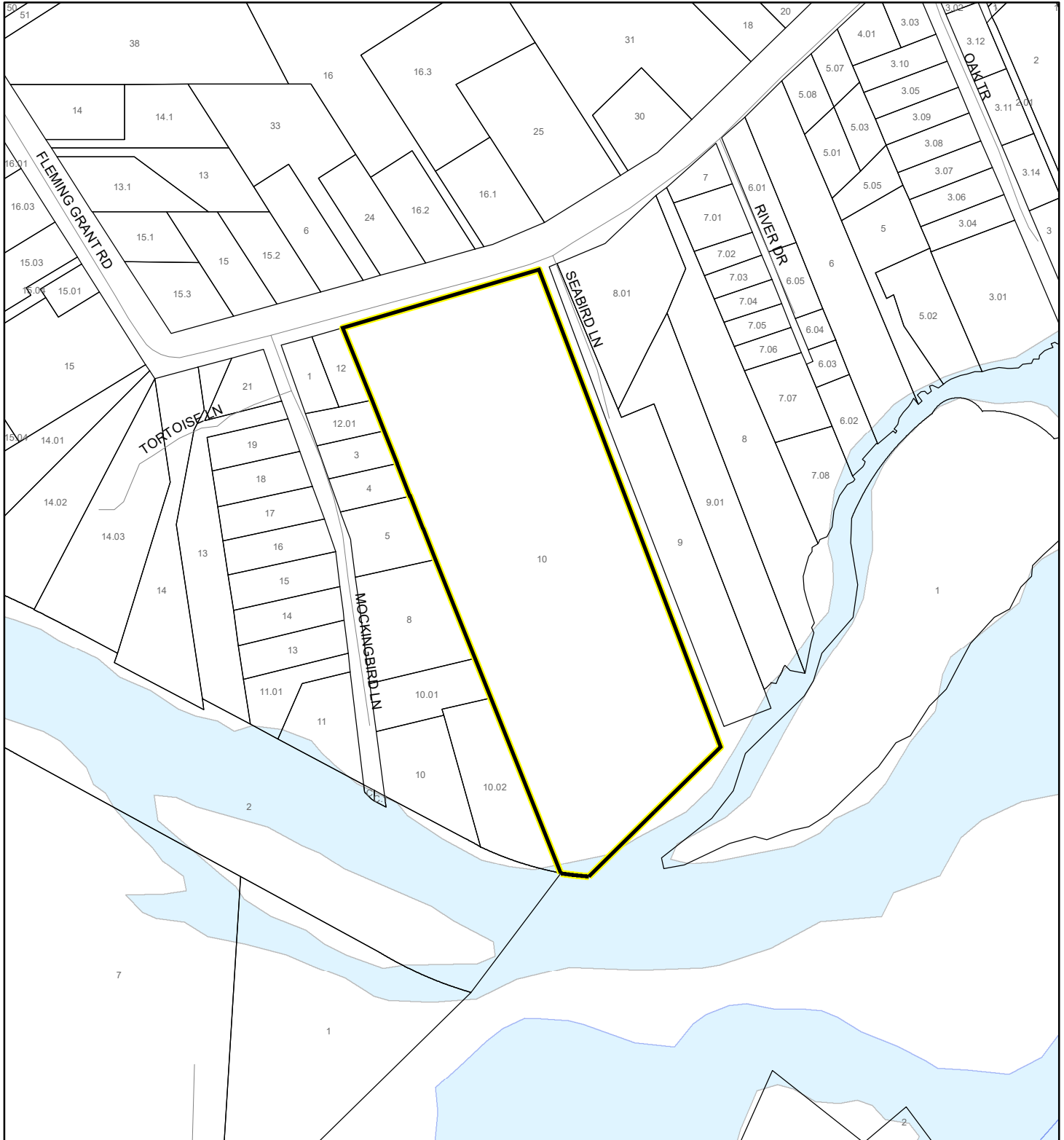
 Eagle Nests  
FWS 2010



# SCRUB JAY OCCUPANCY MAP

LAZY RIVER INVESTMENTS, LLC




20Z00030



1:4,800 or 1 inch = 400 feet

This map was compiled from recorded documents and does not reflect an actual survey. The Brevard County Board of County Commissioners does not assume responsibility for errors or omissions hereon.

Produced by BoCC - GIS Date: 9/10/2020

-  Subject Property
-  Parcels
-  Scrub Jay Occupancy

# SJRWMD FLUCCS UPLAND FORESTS - 4000 Series MAP

LAZY RIVER INVESTMENTS, LLC

20Z00030

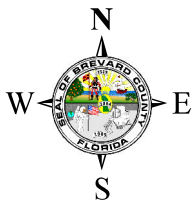
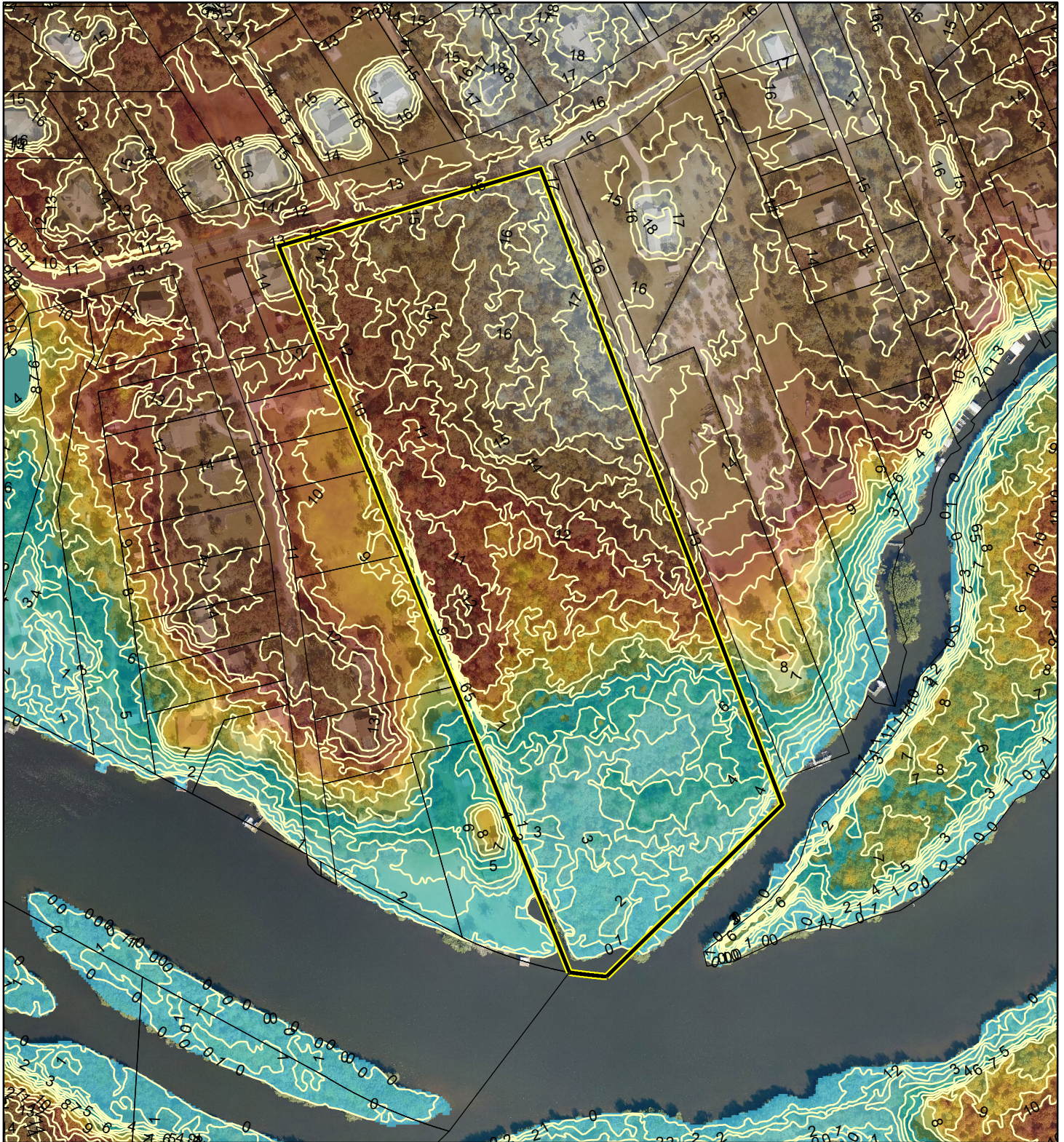




# LiDAR and FLOOD MAP

LAZY RIVER INVESTMENTS, LLC

20Z00030



1:3,600 or 1 inch = 300 feet


This map was compiled from recorded documents and does not reflect an actual survey. The Brevard County Board of County Commissioners does not assume responsibility for errors or omissions hereon.

Produced by BoCC - GIS Date: 10/20/2020

 Subject Property

 Parcels

 Contour - 1 Ft

 Flood @ 6.3  
NAVD '88  
-27.61497116 - 6.3