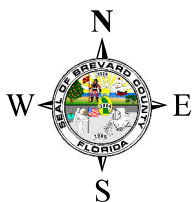
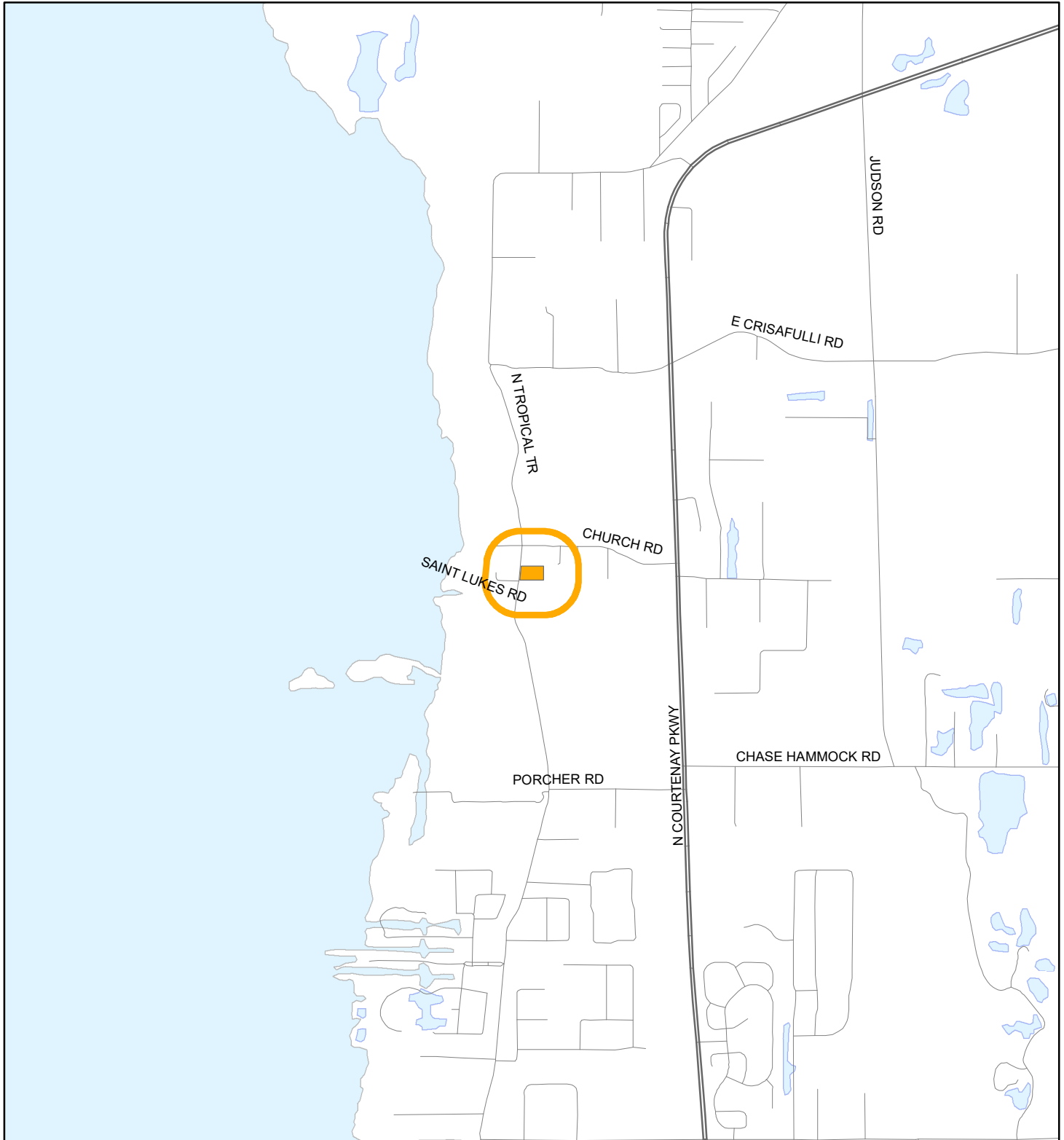


# LOCATION MAP

ST. LUKE'S EPISCOPAL CHURCH OF COURTENAY FL., INC  
20Z00019



1:24,000 or 1 inch = 2,000 feet

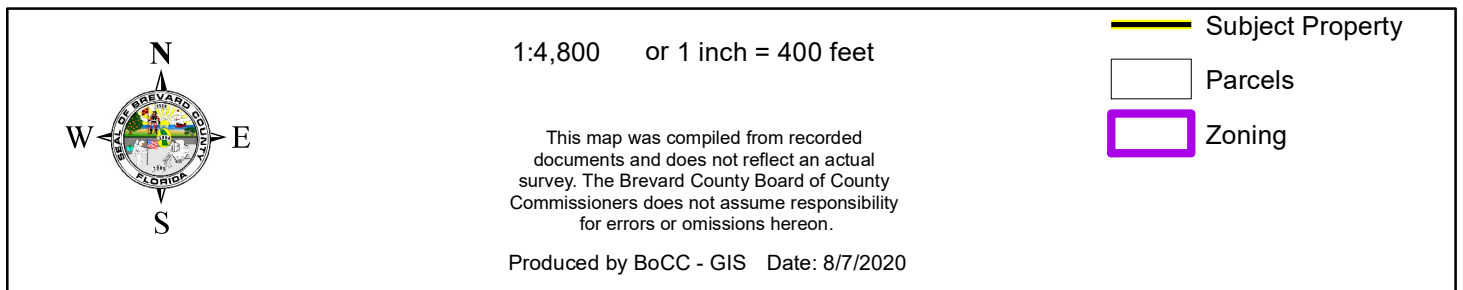
Buffer Distance: 500 feet

This map was compiled from recorded documents and does not reflect an actual survey. The Brevard County Board of County Commissioners does not assume responsibility for errors or omissions hereon.

Produced by BoCC - GIS Date: 8/7/2020

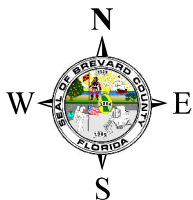
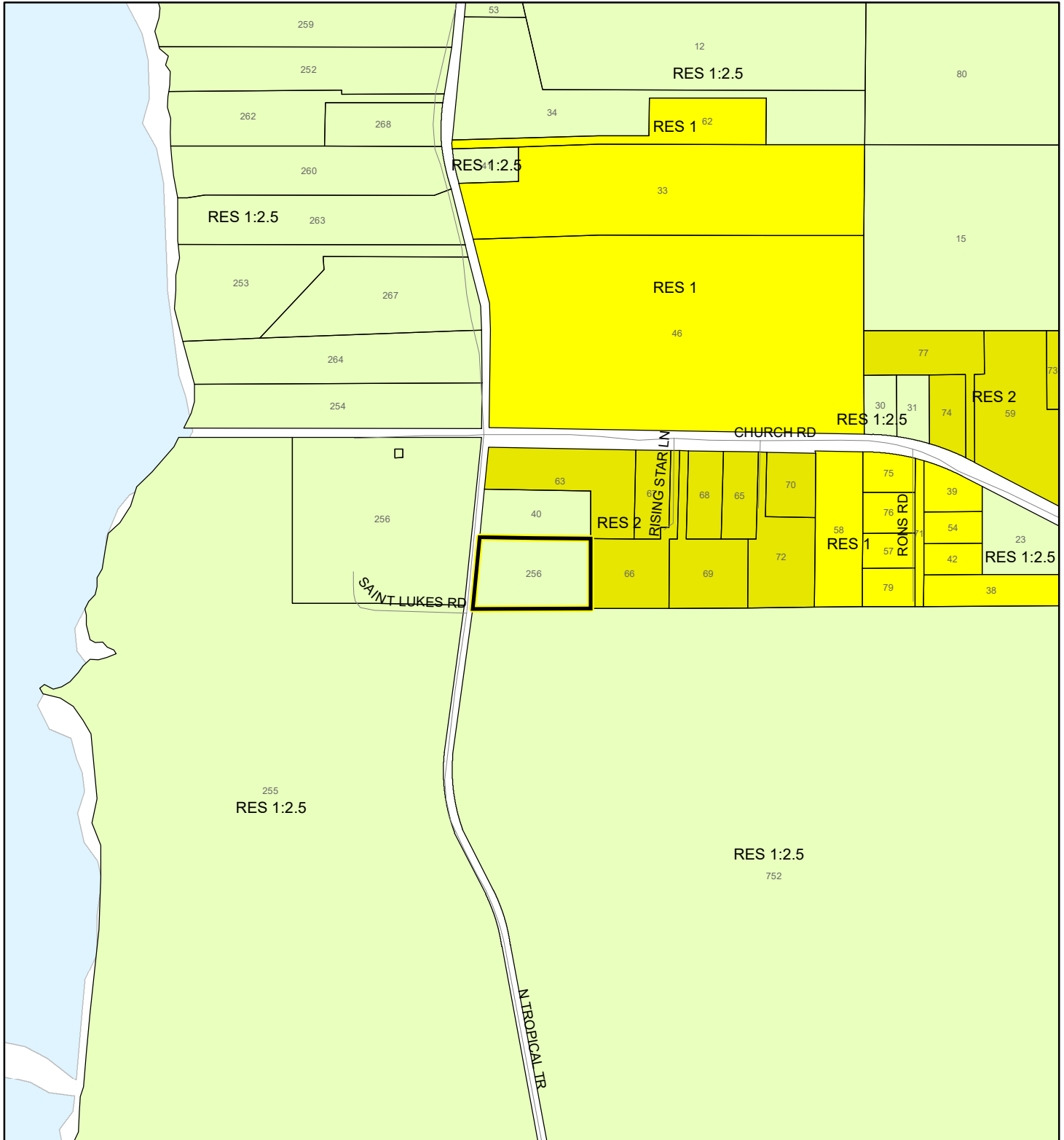
Buffer  
Subject Property

ST. LUKE'S EPISCOPAL CHURCH OF COURTENAY FL., INC  
20Z00019



# FUTURE LAND USE MAP

ST. LUKE'S EPISCOPAL CHURCH OF COURTENAY FL., INC  
20Z00019



1:4,800 or 1 inch = 400 feet

**Subject Property**  
**Parcels**

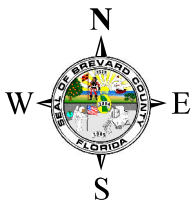
This map was compiled from recorded documents and does not reflect an actual survey. The Brevard County Board of County Commissioners does not assume responsibility for errors or omissions hereon.

Produced by BoCC - GIS Date: 8/7/2020



# AERIAL MAP

ST. LUKE'S EPISCOPAL CHURCH OF COURTENAY FL., INC  
20Z00019




1:2,400 or 1 inch = 200 feet

PHOTO YEAR: 2020

This map was compiled from recorded documents and does not reflect an actual survey. The Brevard County Board of County Commissioners does not assume responsibility for errors or omissions hereon.

Produced by BoCC - GIS Date: 8/7/2020

 Subject Property

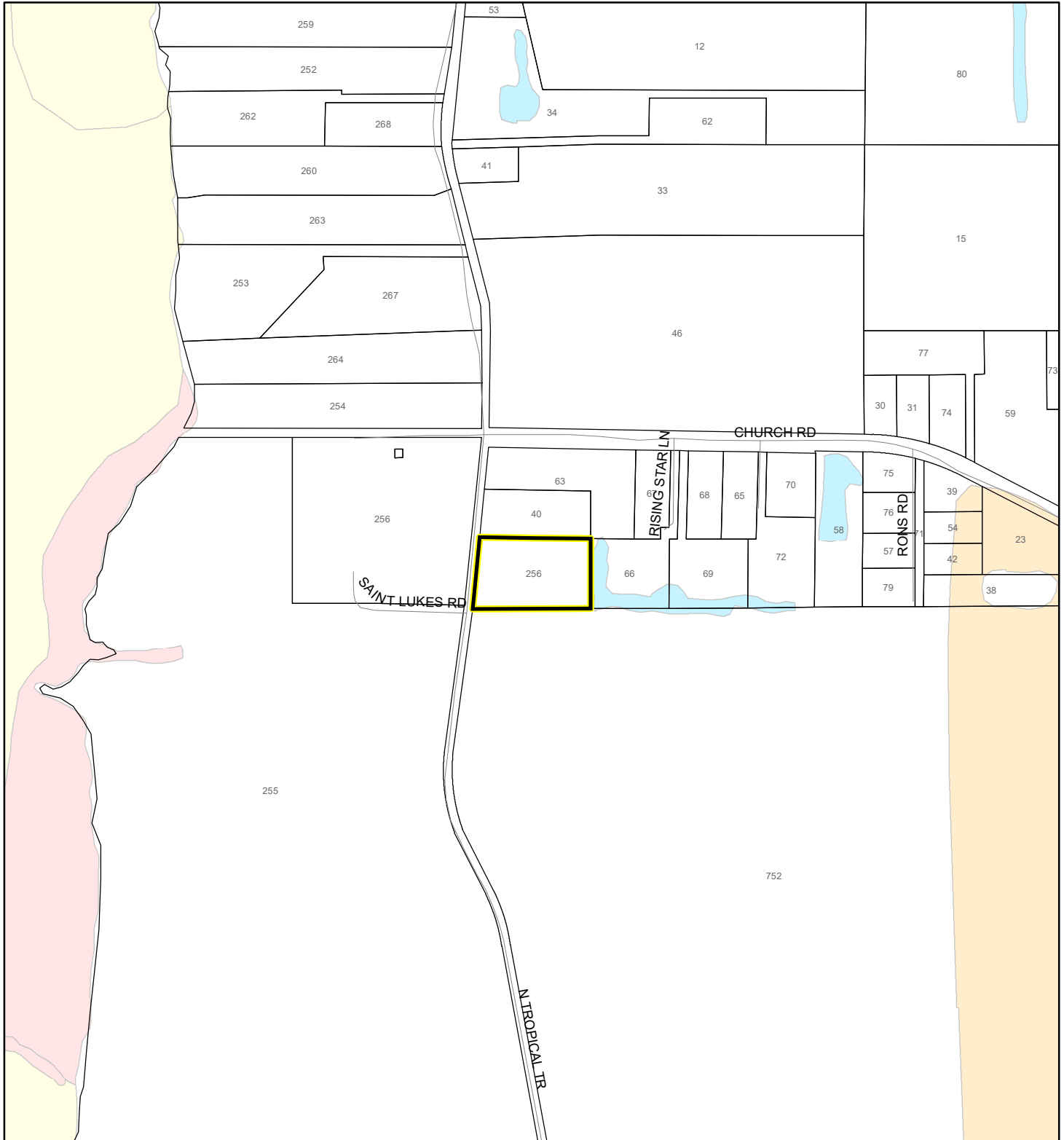
 Parcels



# NWI WETLANDS MAP

ST. LUKE'S EPISCOPAL CHURCH OF COURTENAY FL., INC

20Z00019









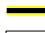
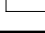


1:4,800 or 1 inch = 400 feet

This map was compiled from recorded documents and does not reflect an actual survey. The Brevard County Board of County Commissioners does not assume responsibility for errors or omissions hereon.

Produced by BoCC - GIS Date: 8/7/2020

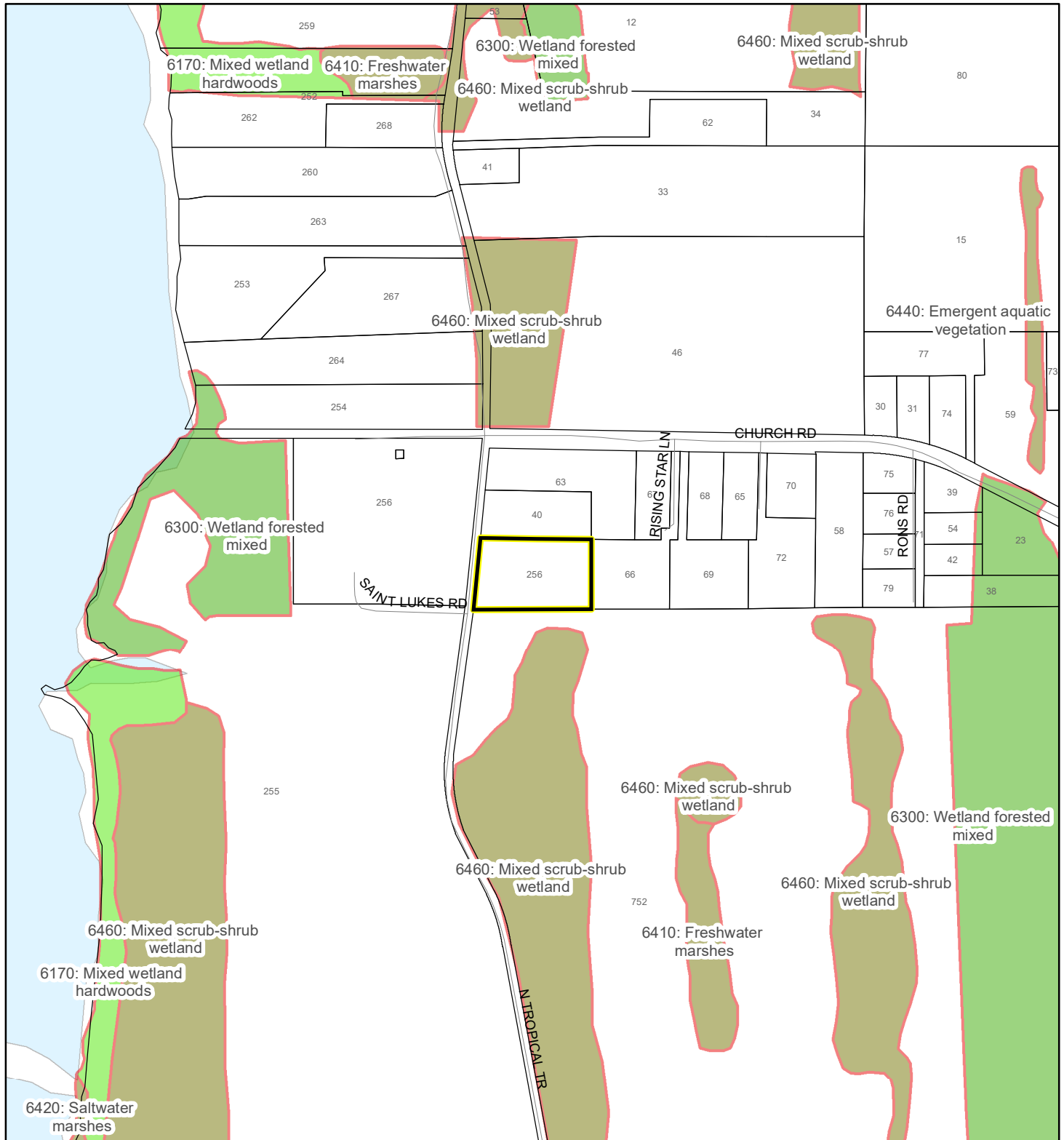
## National Wetlands Inventory (NWI)

 Estuarine and Marine Deepwater	 Freshwater Pond
 Estuarine and Marine Wetland	 Lake
 Freshwater Emergent Wetland	 Other
 Freshwater Forested/Shrub Wetland	 Riverine
 Subject Property	
 Parcels	

# SJRWMD FLUCCS WETLANDS - 6000 Series MAP

ST. LUKE'S EPISCOPAL CHURCH OF COURTENAY FL., INC

20Z00019



1:4,800 or 1 inch = 400 feet

This map was compiled from recorded documents and does not reflect an actual survey. The Brevard County Board of County Commissioners does not assume responsibility for errors or omissions hereon.

Produced by BoCC - GIS Date: 8/7/2020

## SJRWMD FLUCCS WETLANDS

- Wetland Hardwood Forests - Series 6100
- Wetland Coniferous Forest - Series 6200
- Wetland Forested Mixed - Series 6300
- Vegetated Non-Forested Wetlands - Series 6400
- Non-Vegetated Wetland - Series 6500

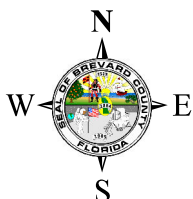
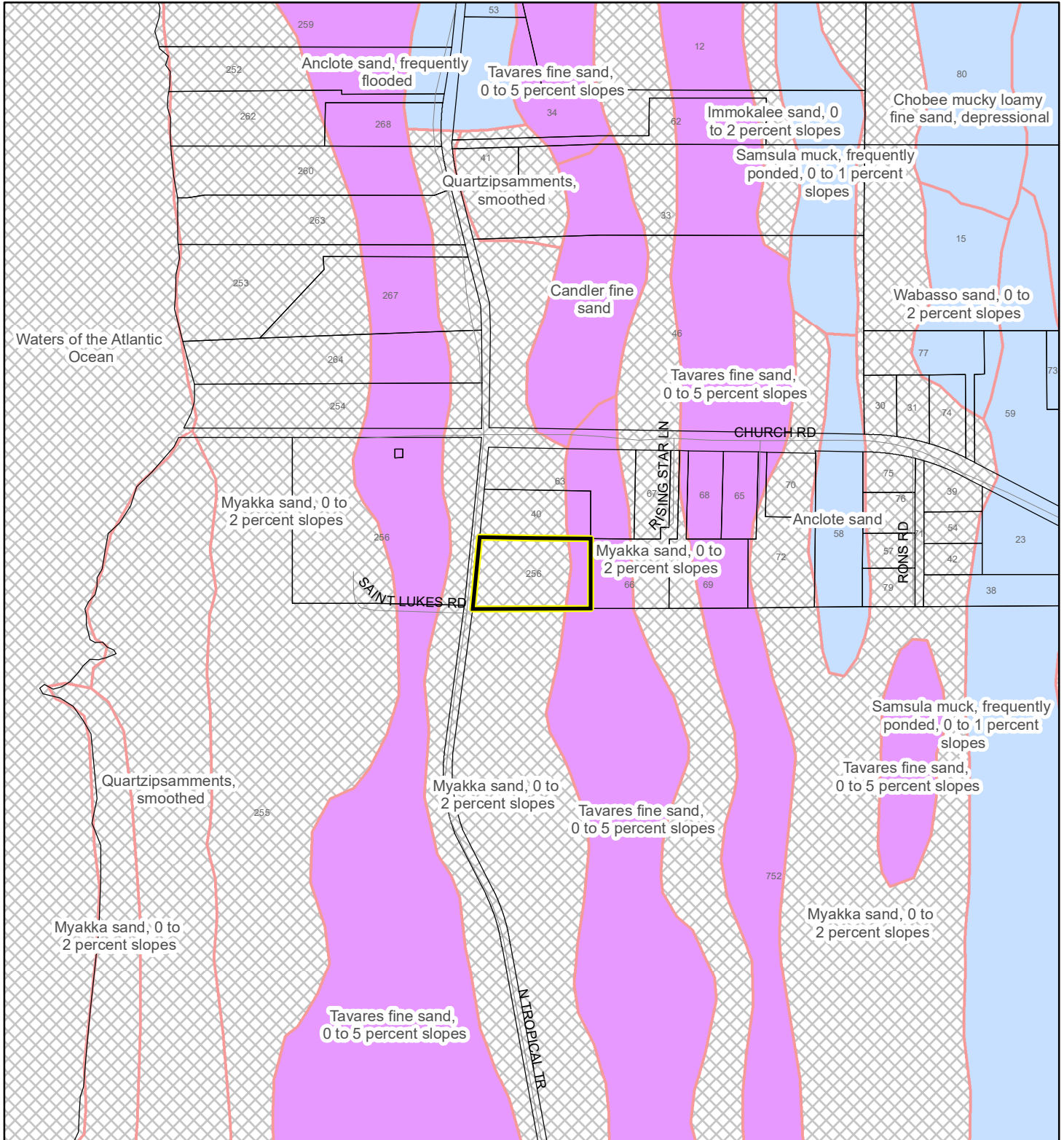
Subject Property

Parcels

# USDA SCSSS SOILS MAP

ST. LUKE'S EPISCOPAL CHURCH OF COURTENAY FL., INC

20Z00019



1:4,800 or 1 inch = 400 feet

This map was compiled from recorded documents and does not reflect an actual survey. The Brevard County Board of County Commissioners does not assume responsibility for errors or omissions hereon.

Produced by BoCC - GIS Date: 8/7/2020

## USDA SCSSS Soils

- Aquifer and Hydric
- Aquifer
- Hydric
- None

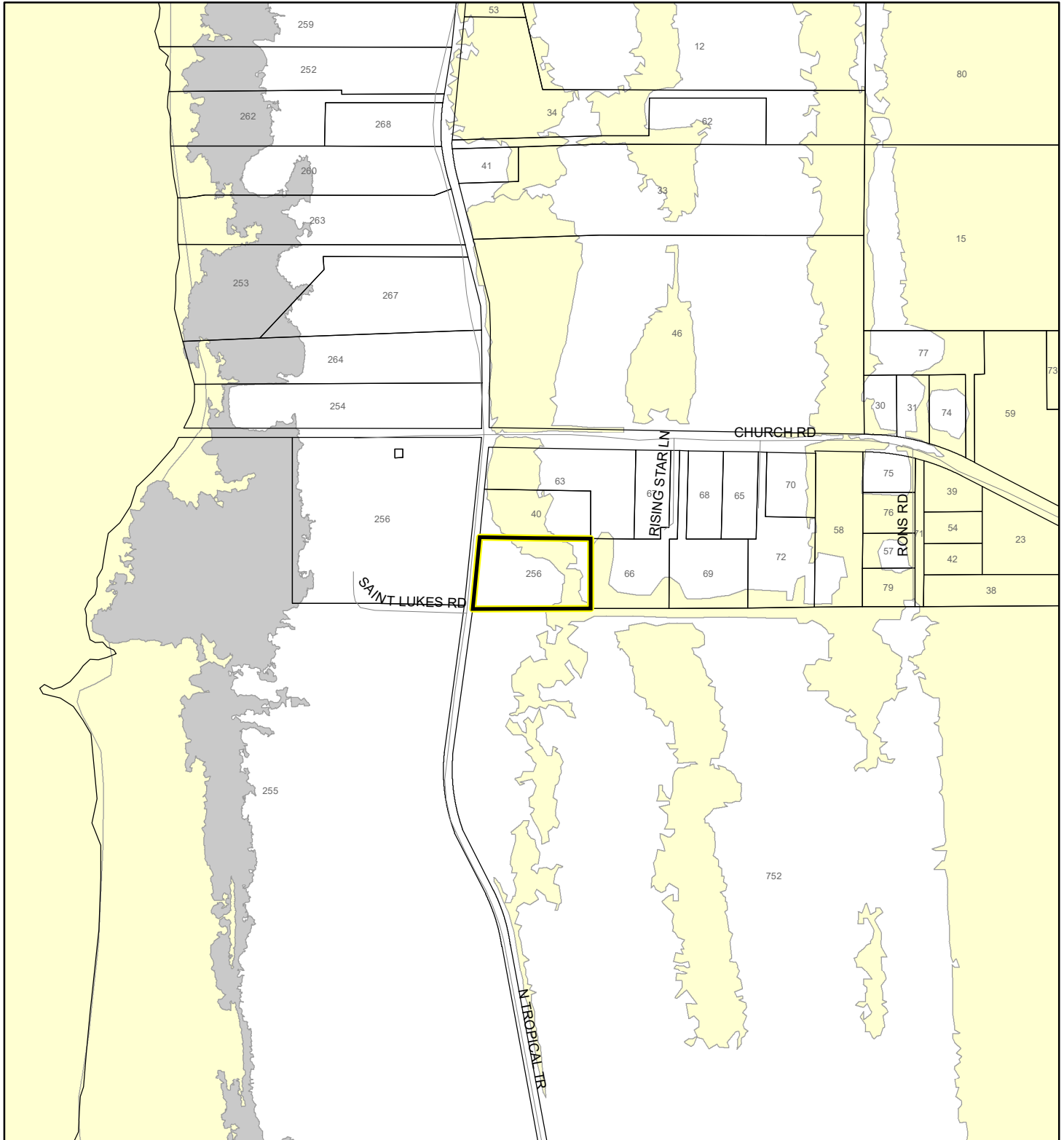
Subject Property

Parcels

# FEMA FLOOD ZONES MAP

ST. LUKE'S EPISCOPAL CHURCH OF COURTENAY FL., INC

20Z00019



1:4,800 or 1 inch = 400 feet

This map was compiled from recorded documents and does not reflect an actual survey. The Brevard County Board of County Commissioners does not assume responsibility for errors or omissions hereon.

Produced by BoCC - GIS Date: 8/7/2020

## FEMA Flood Zones

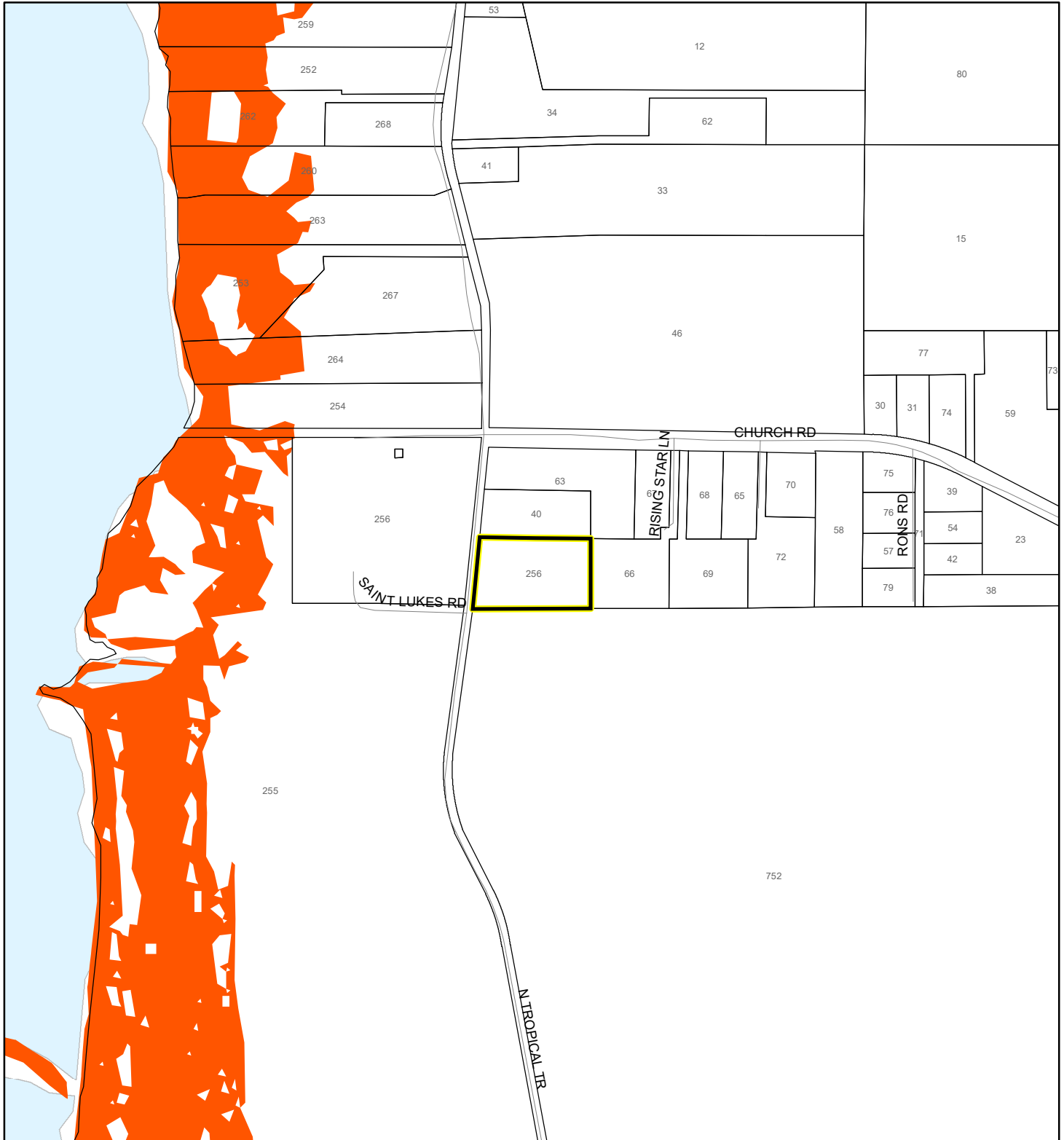
A	AO	X
AE	Open Water	X Protected By Levee
AH	VE	
0.2 Percent Annual Chance Flood Hazard		
0.2 Percent Annual Chance Flood Hazard Contained in Channel		
Subject Property		Parcels



# COASTAL HIGH HAZARD AREA MAP

ST. LUKE'S EPISCOPAL CHURCH OF COURTENAY FL., INC

20Z00019



1:4,800 or 1 inch = 400 feet


This map was compiled from recorded documents and does not reflect an actual survey. The Brevard County Board of County Commissioners does not assume responsibility for errors or omissions hereon.

Produced by BoCC - GIS Date: 8/7/2020

 Subject Property

 Parcels

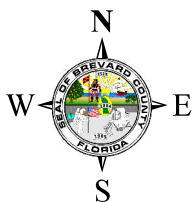
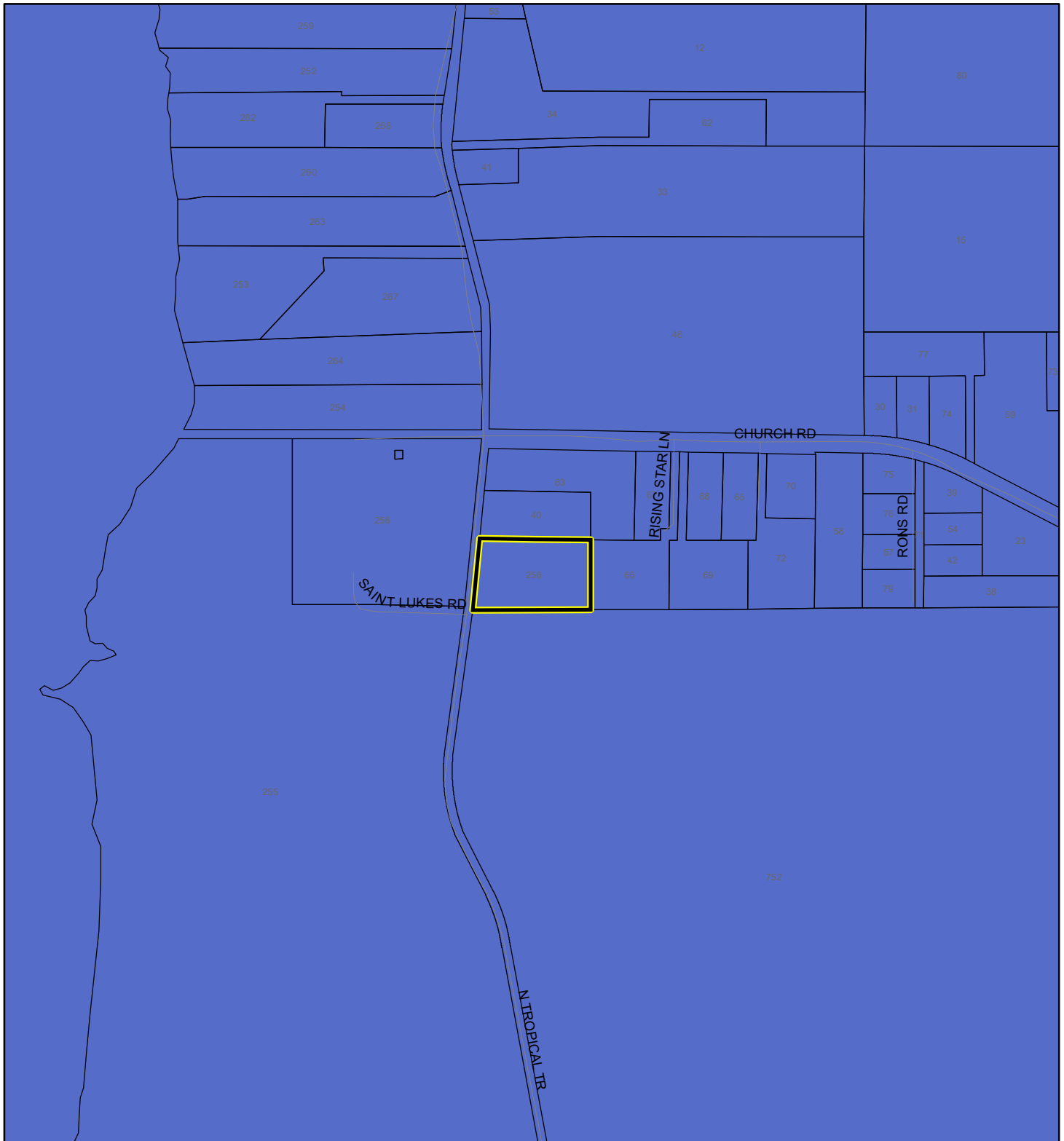
**Coastal High Hazard Area**

 SurgeZoneCat1

# INDIAN RIVER LAGOON SEPTIC OVERLAY MAP

ST. LUKE'S EPISCOPAL CHURCH OF COURTENAY FL., INC

20Z00019



1:4,800 or 1 inch = 400 feet

This map was compiled from recorded documents and does not reflect an actual survey. The Brevard County Board of County Commissioners does not assume responsibility for errors or omissions hereon.

Produced by BoCC - GIS Date: 8/7/2020

 Subject Property

 Parcels

**Septic Overlay**

 40 Meters

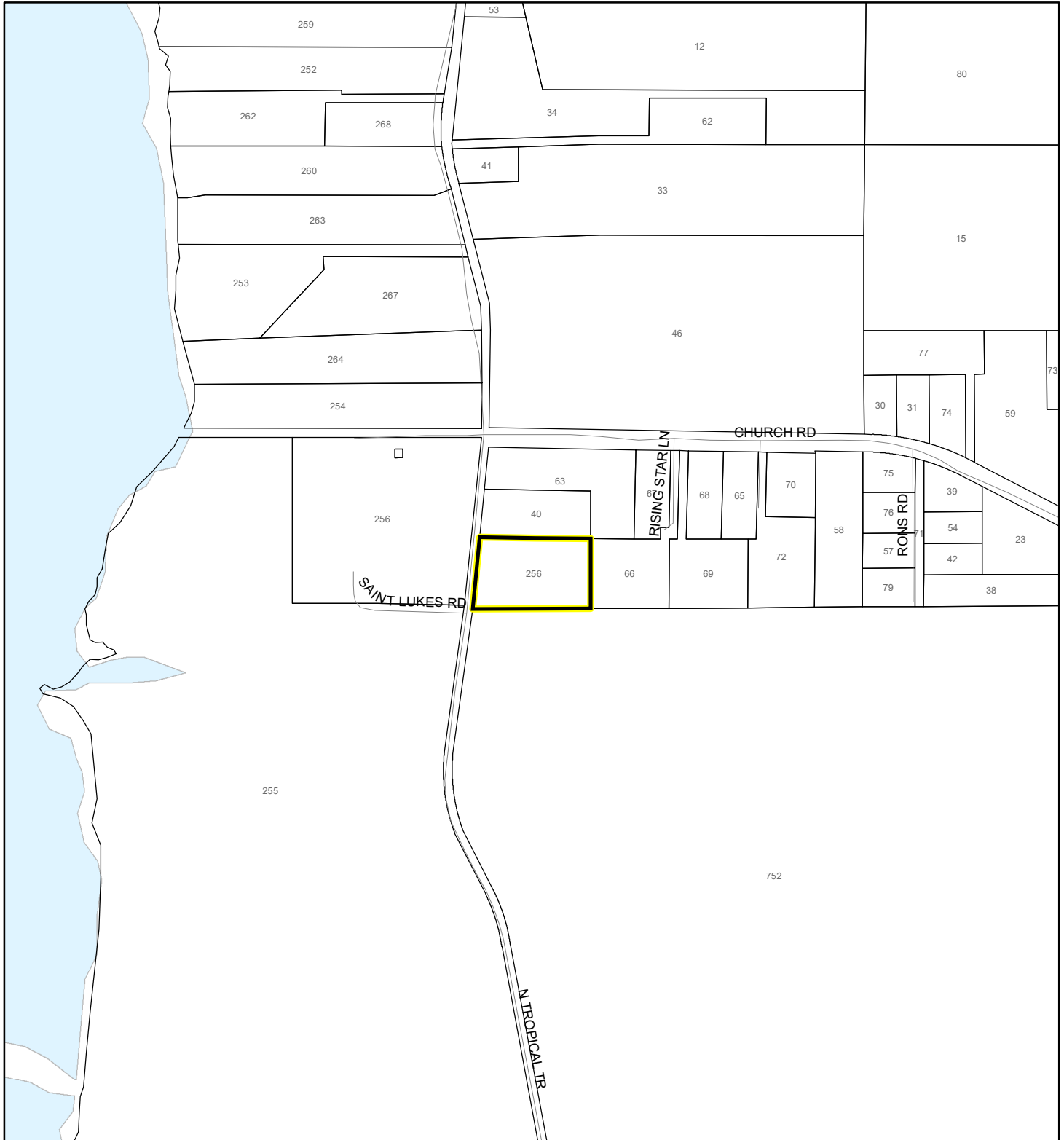
 60 Meters

 All Distances

# EAGLE NESTS MAP

ST. LUKE'S EPISCOPAL CHURCH OF COURTENAY FL., INC

20Z00019



1:4,800 or 1 inch = 400 feet

This map was compiled from recorded documents and does not reflect an actual survey. The Brevard County Board of County Commissioners does not assume responsibility for errors or omissions hereon.

Produced by BoCC - GIS Date: 8/7/2020

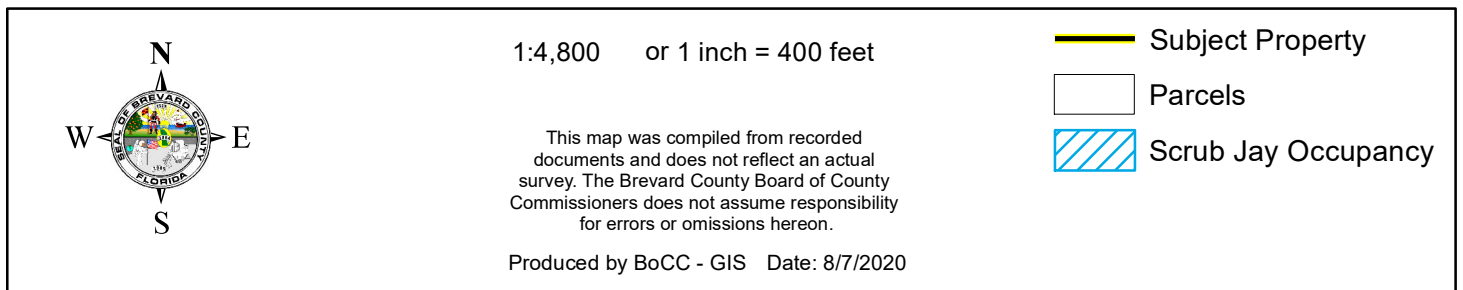
 Subject Property

 Parcels



Eagle Nests  
FWS 2010

ST. LUKE'S EPISCOPAL CHURCH OF COURTENAY FL., INC  
20Z00019

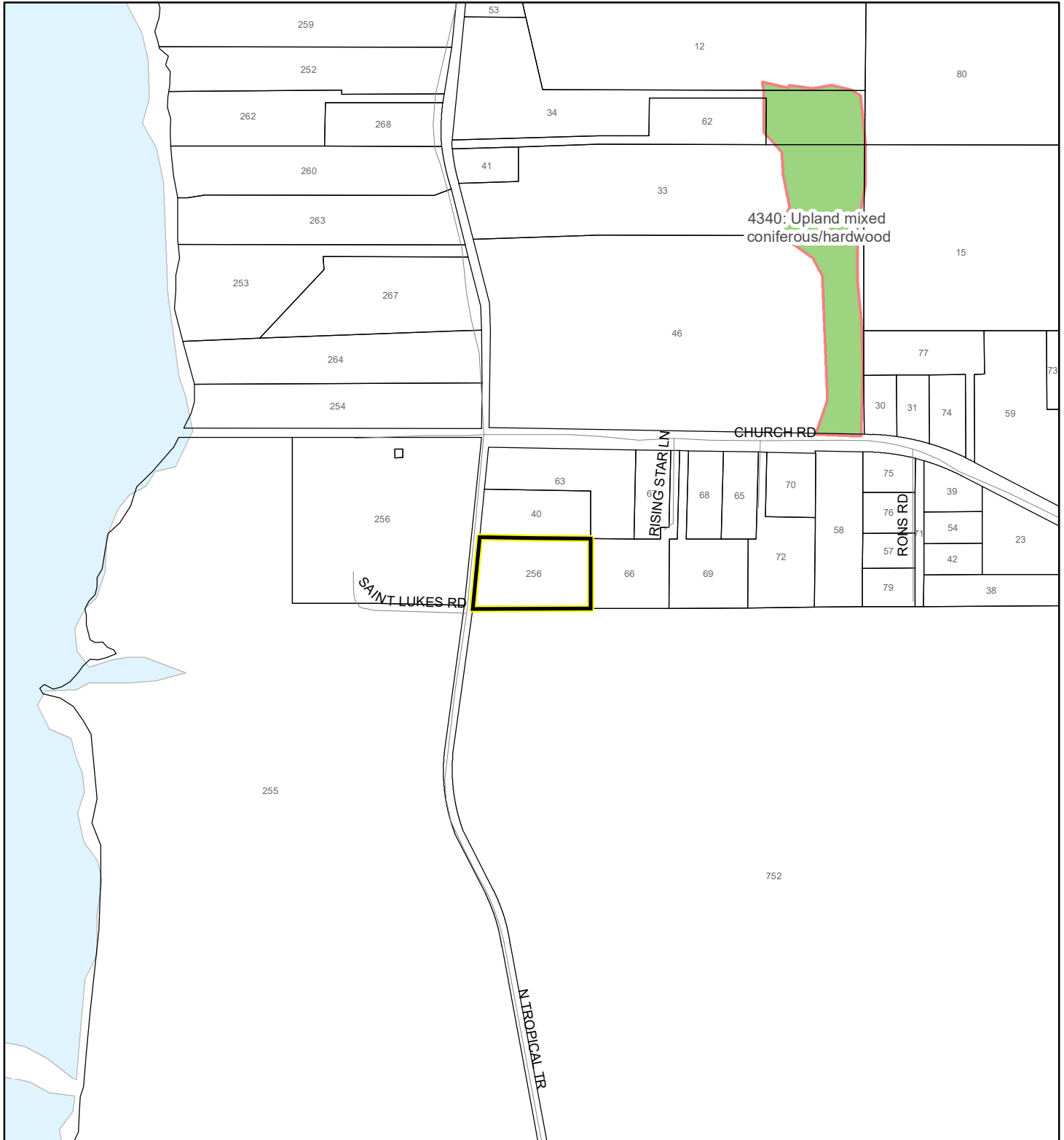




# SJRWMD FLUCCS UPLAND FORESTS - 4000 Series MAP

ST. LUKE'S EPISCOPAL CHURCH OF COURTENAY FL., INC

20Z00019



1:4,800 or 1 inch = 400 feet

This map was compiled from recorded documents and does not reflect an actual survey. The Brevard County Board of County Commissioners does not assume responsibility for errors or omissions hereon.

Produced by BoCC - GIS Date: 8/7/2020

## SJRWMD FLUCCS Upland Forests

- Upland Coniferous Forest - 4100 Series
- Upland Hardwood Forest - 4200 Series
- Upland Mixed Forest - 4300 Series
- Tree Plantations - 4400 Series

Subject Property  Parcels