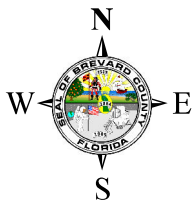
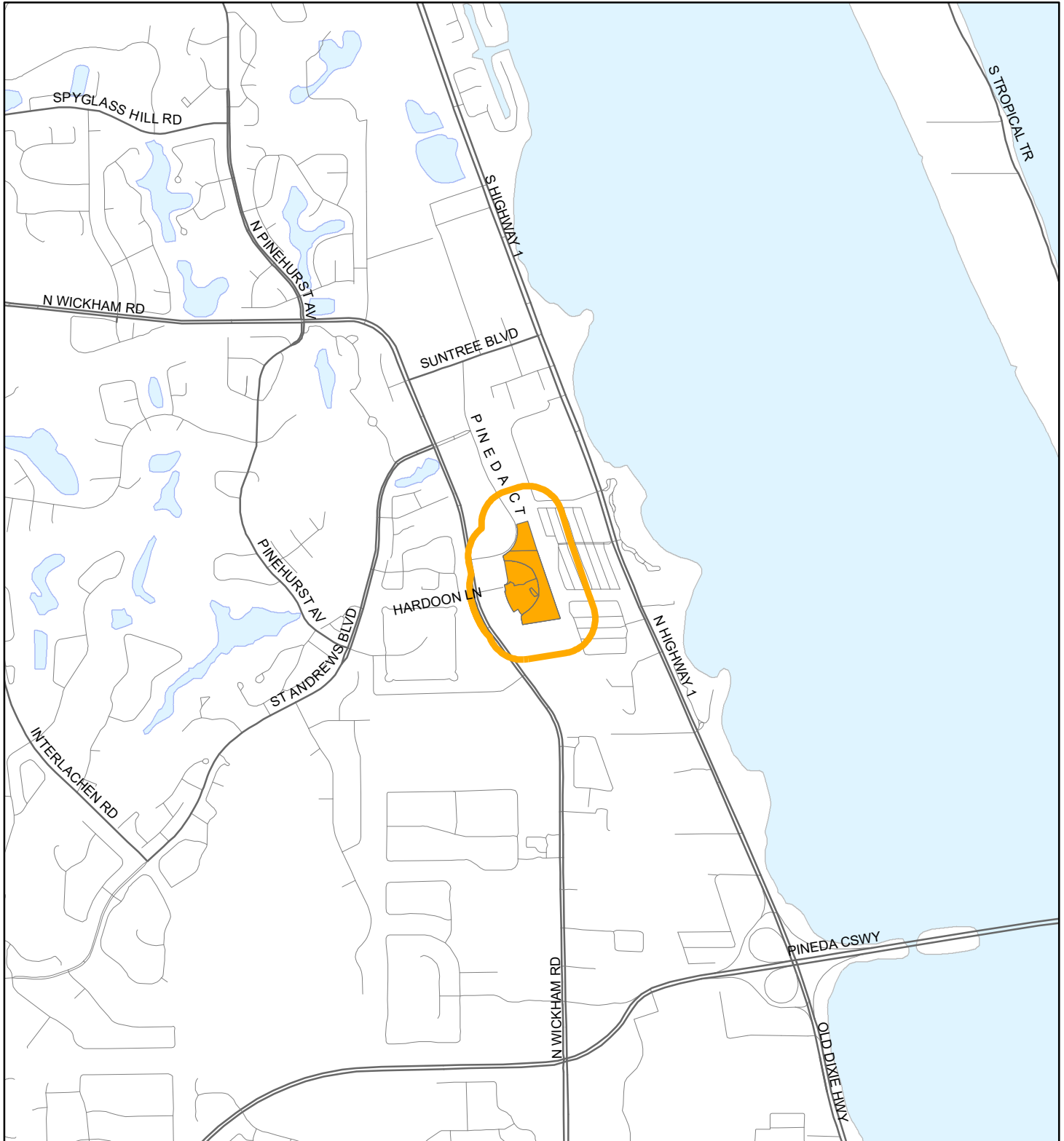


LOCATION MAP

BREVARD MEDICAL CITY, LLC; BREVARD MEDICAL CITY OWNERS ASSOC., INC; and CHATEAU MADELEINE, LLC
20Z00014





1:24,000 or 1 inch = 2,000 feet

Buffer Distance: 500 feet

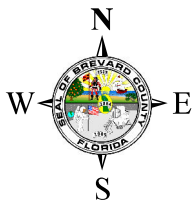
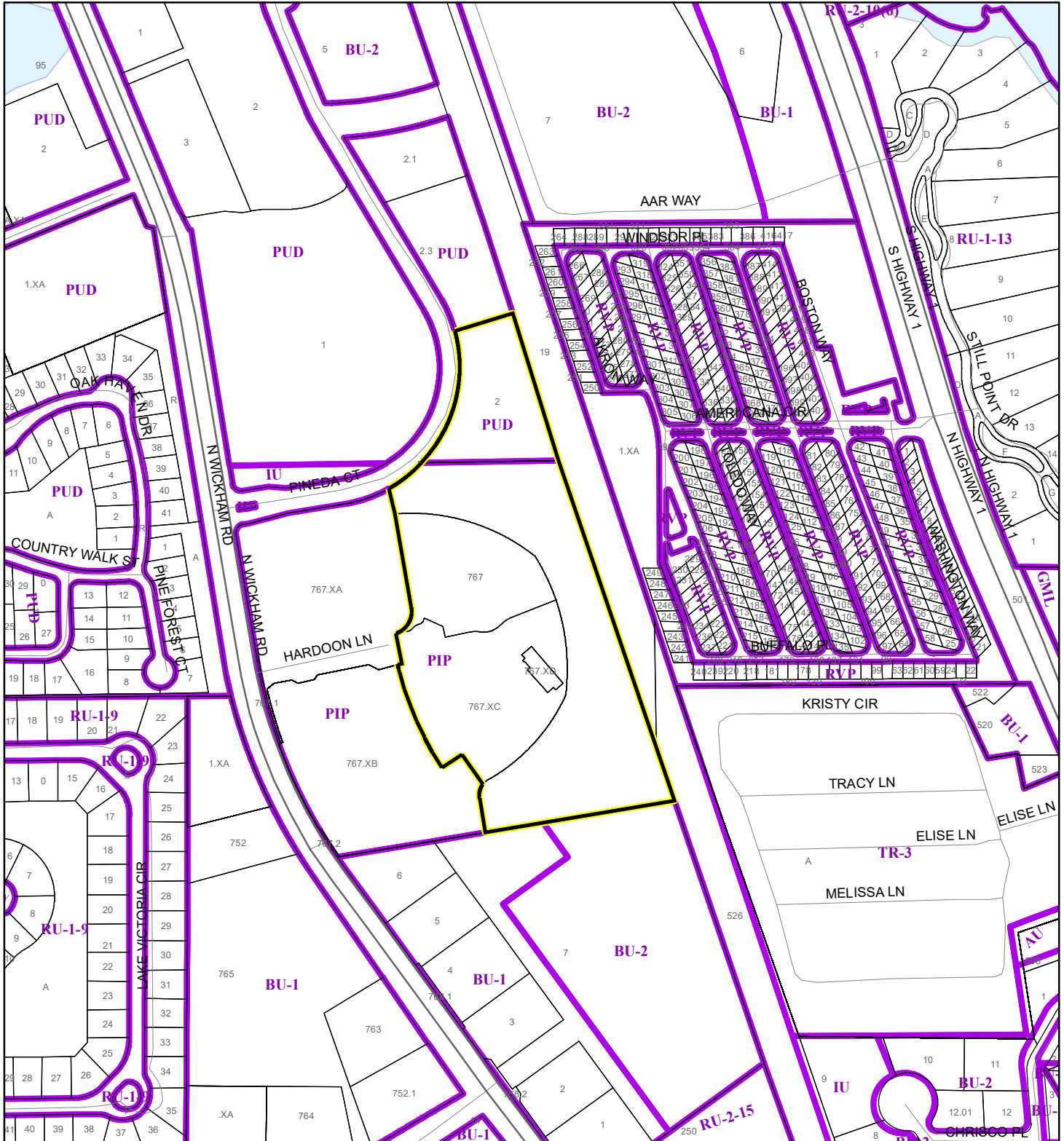
This map was compiled from recorded documents and does not reflect an actual survey. The Brevard County Board of County Commissioners does not assume responsibility for errors or omissions hereon.

Produced by BoCC - GIS Date: 8/6/2020

 Buffer
 Subject Property

ZONING MAP

BREVARD MEDICAL CITY, LLC; BREVARD MEDICAL CITY OWNERS ASSOC., INC; and CHATEAU MADELEINE, LLC
20Z00014



1:4,800 or 1 inch = 400 feet

This map was compiled from recorded documents and does not reflect an actual survey. The Brevard County Board of County Commissioners does not assume responsibility for errors or omissions hereon.

Produced by BoCC - GIS Date: 8/6/2020

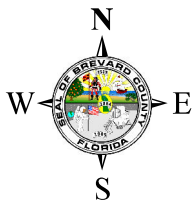
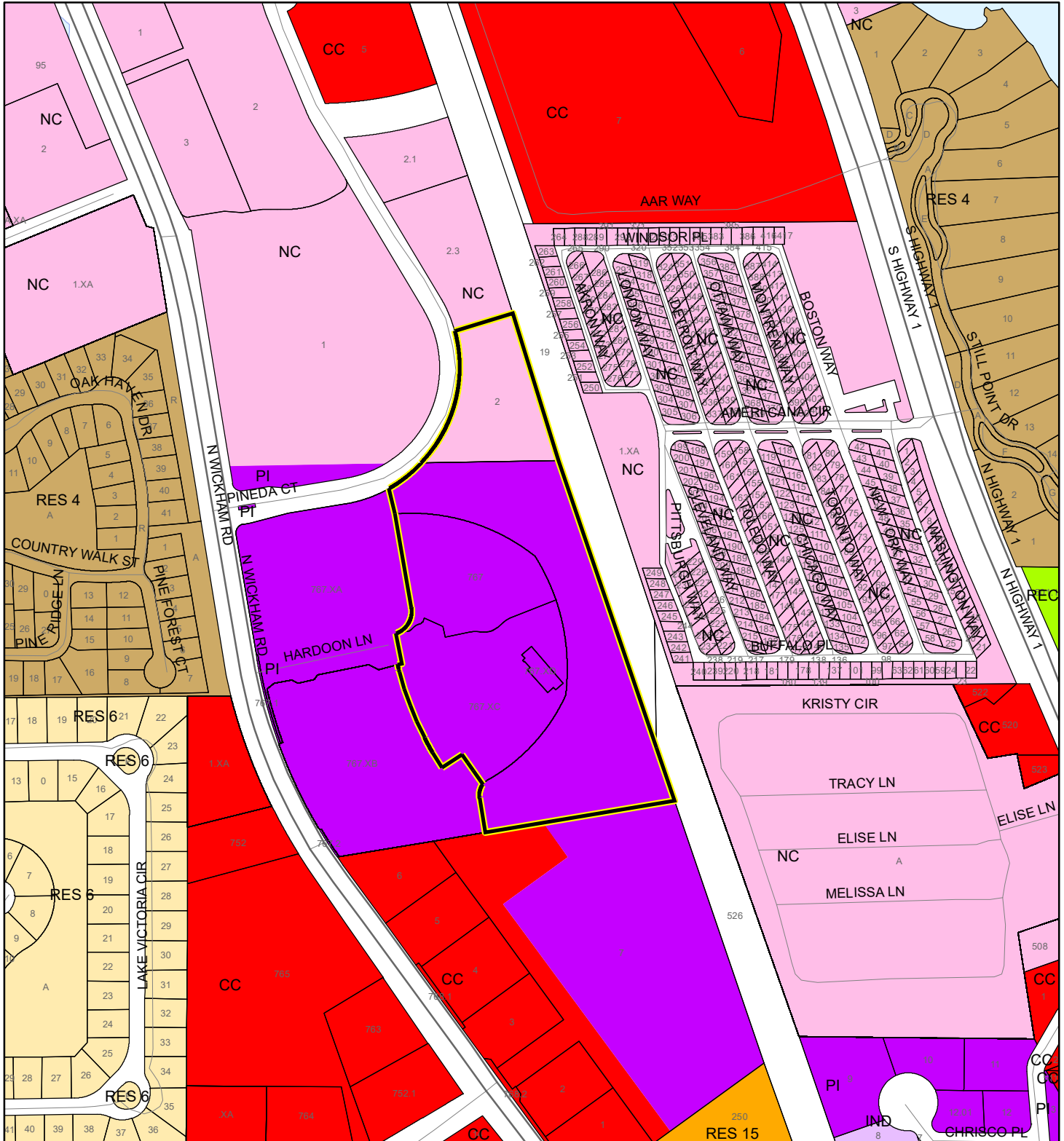
Subject Property

Parcels

Zoning

FUTURE LAND USE MAP

BREVARD MEDICAL CITY, LLC; BREVARD MEDICAL CITY OWNERS ASSOC., INC; and CHATEAU MADELEINE, LLC
20Z00014



1:4,800 or 1 inch = 400 feet

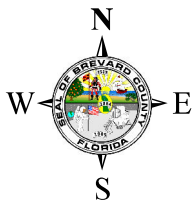
Subject Property
 Parcels

This map was compiled from recorded documents and does not reflect an actual survey. The Brevard County Board of County Commissioners does not assume responsibility for errors or omissions hereon.

Produced by BoCC - GIS Date: 8/6/2020

AERIAL MAP

BREVARD MEDICAL CITY, LLC; BREVARD MEDICAL CITY OWNERS ASSOC., INC; and CHATEAU MADELEINE, LLC
20Z00014




1:4,800 or 1 inch = 400 feet

PHOTO YEAR: 2020

This map was compiled from recorded documents and does not reflect an actual survey. The Brevard County Board of County Commissioners does not assume responsibility for errors or omissions hereon.

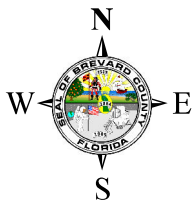
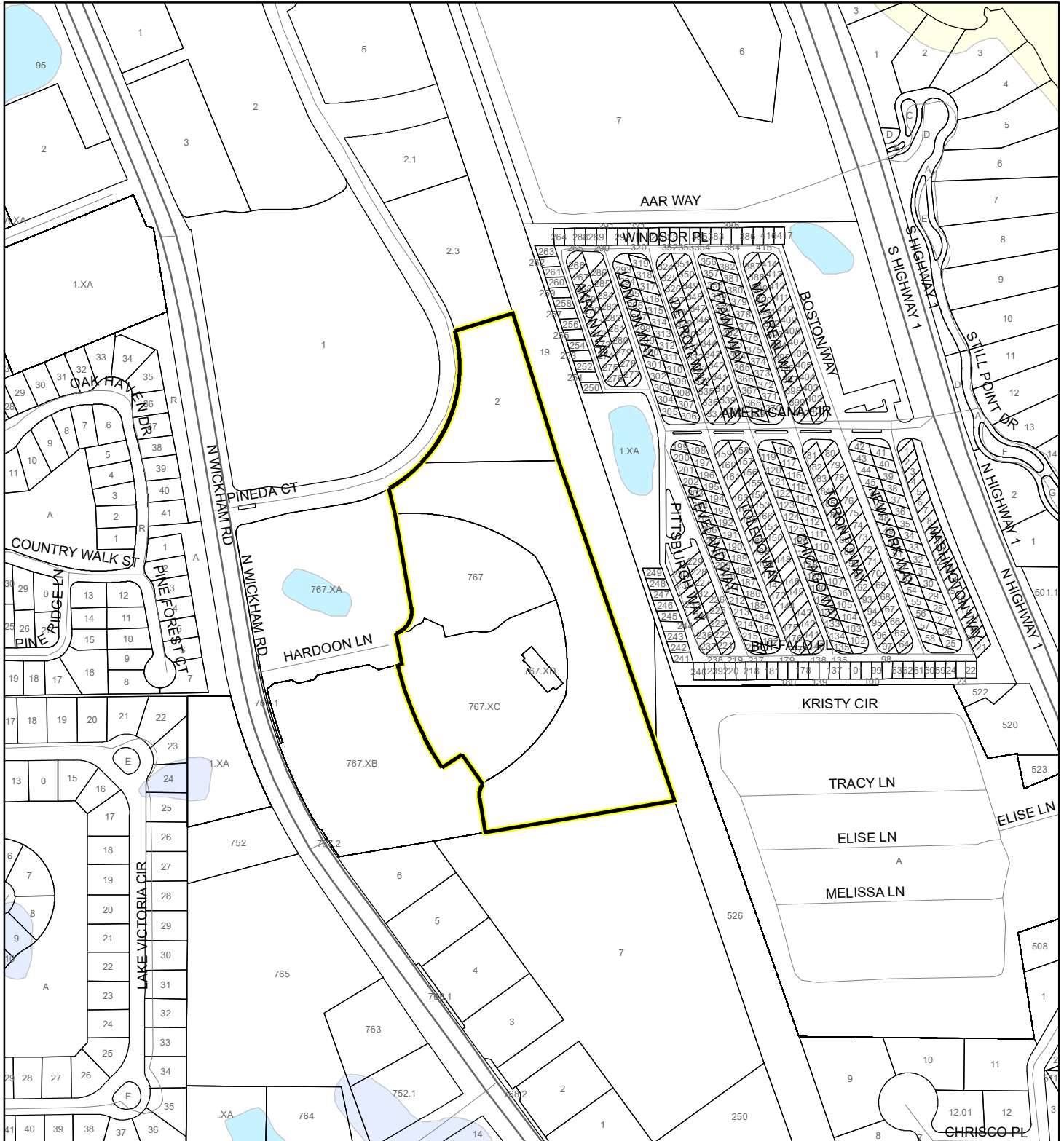
Produced by BoCC - GIS Date: 8/6/2020

 Subject Property

 Parcels

NWI WETLANDS MAP

BREVARD MEDICAL CITY, LLC; BREVARD MEDICAL CITY OWNERS ASSOC., INC; and CHATEAU MADELEINE, LLC
20Z00014









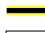
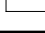


1:4,800 or 1 inch = 400 feet

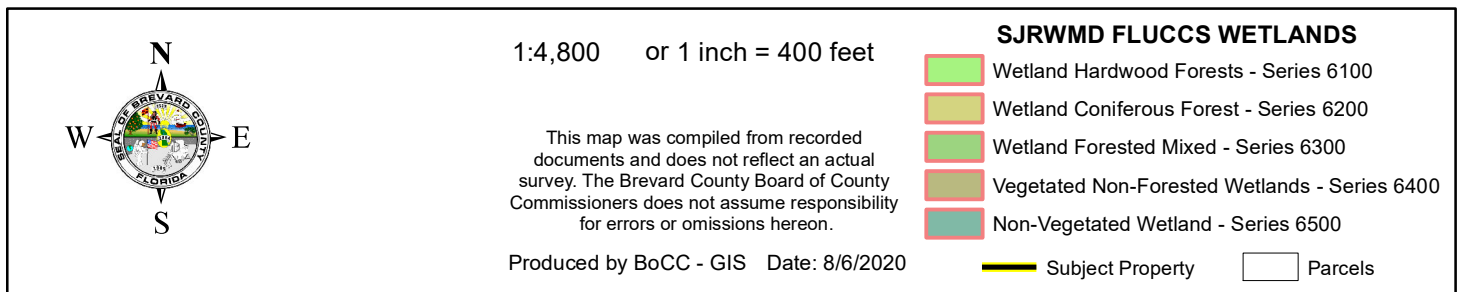
This map was compiled from recorded documents and does not reflect an actual survey. The Brevard County Board of County Commissioners does not assume responsibility for errors or omissions hereon.

Produced by BoCC - GIS Date: 8/6/2020

National Wetlands Inventory (NWI)

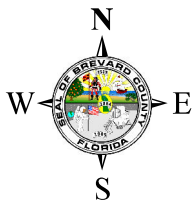
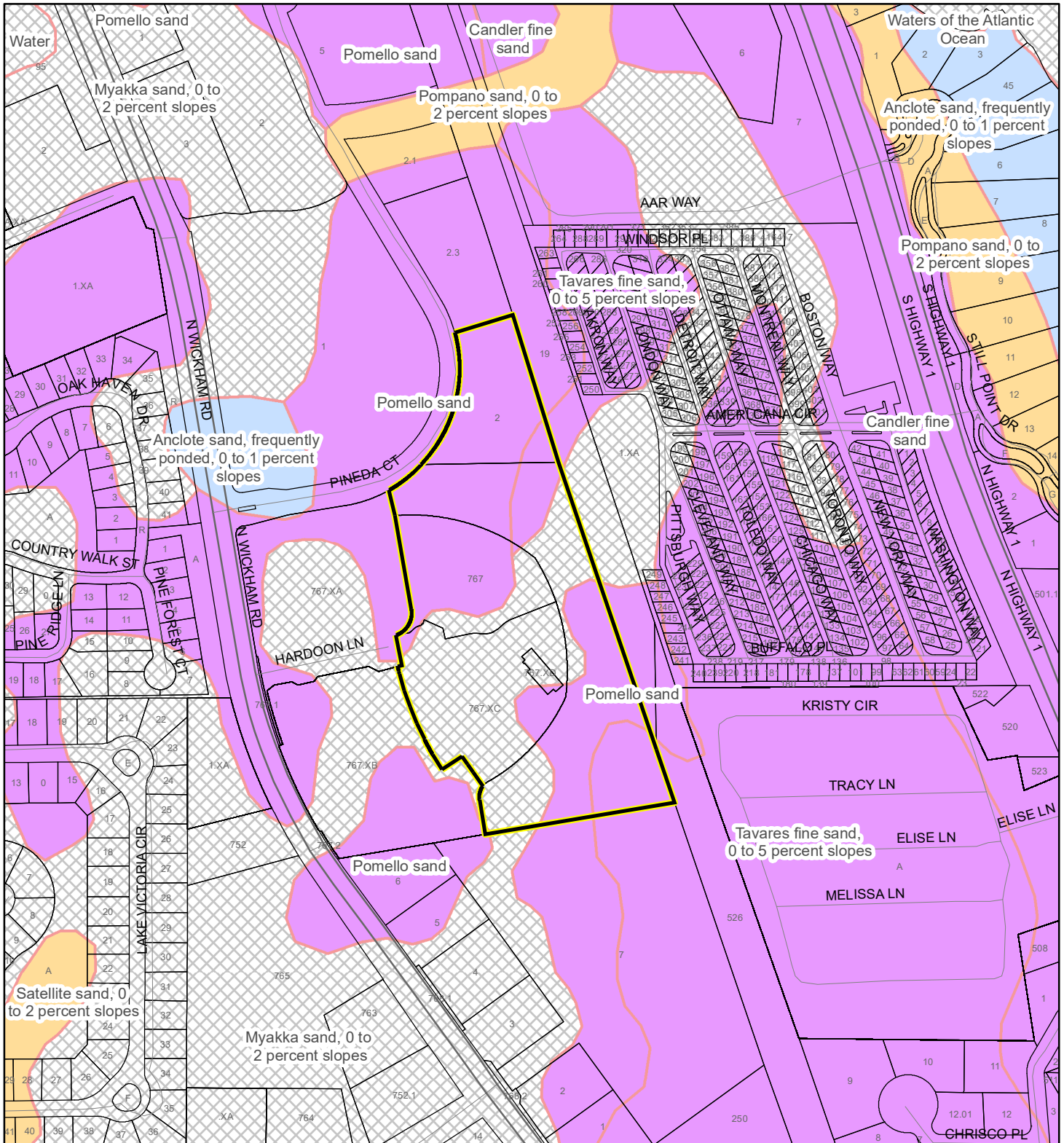
 Estuarine and Marine Deepwater	 Freshwater Pond
 Estuarine and Marine Wetland	 Lake
 Freshwater Emergent Wetland	 Other
 Freshwater Forested/Shrub Wetland	 Riverine
	 Subject Property
	 Parcels

BREVARD MEDICAL CITY, LLC; BREVARD MEDICAL CITY OWNERS ASSOC., INC; and CHATEAU MADELEINE, LLC
20Z00014



USDA SCSSS SOILS MAP

BREVARD MEDICAL CITY, LLC; BREVARD MEDICAL CITY OWNERS ASSOC., INC; and CHATEAU MADELEINE, LLC
20Z00014



1:4,800 or 1 inch = 400 feet

This map was compiled from recorded documents and does not reflect an actual survey. The Brevard County Board of County Commissioners does not assume responsibility for errors or omissions hereon.

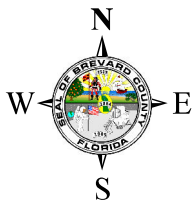
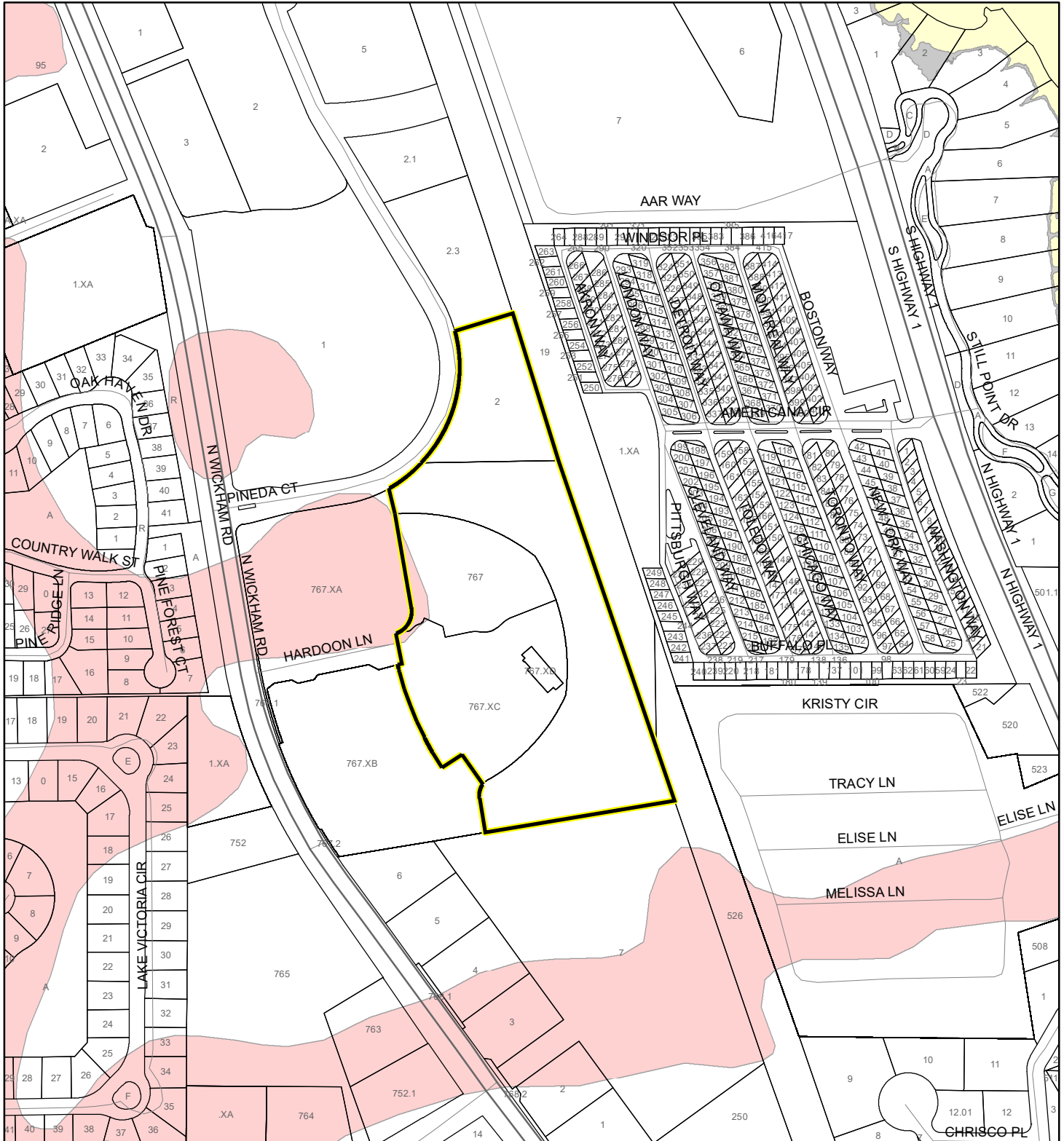
Produced by BoCC - GIS Date: 8/6/2020

USDA SCSSS Soils

- Aquifer and Hydric
- Aquifer
- Hydric
- None
- Subject Property
- Parcels

FEMA FLOOD ZONES MAP

BREVARD MEDICAL CITY, LLC; BREVARD MEDICAL CITY OWNERS ASSOC., INC; and CHATEAU MADELEINE, LLC
20Z00014



1:4,800 or 1 inch = 400 feet

This map was compiled from recorded documents and does not reflect an actual survey. The Brevard County Board of County Commissioners does not assume responsibility for errors or omissions hereon.

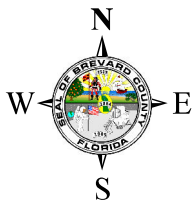
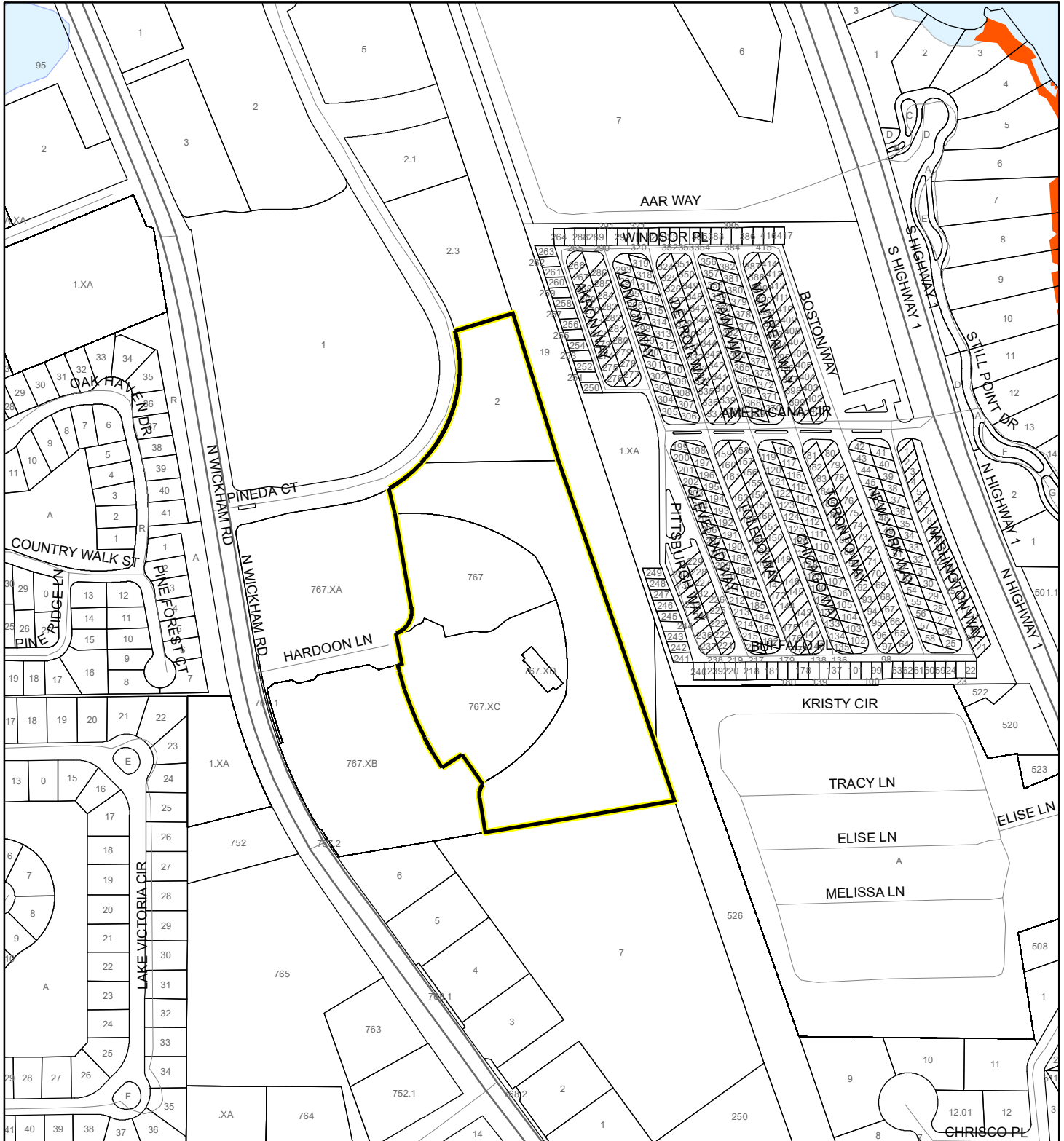
Produced by BoCC - GIS Date: 8/6/2020

FEMA Flood Zones

- | | | |
|---|------------|----------------------|
| A | AO | X |
| AE | Open Water | X Protected By Levee |
| AH | VE | |
| 0.2 Percent Annual Chance Flood Hazard | | |
| 0.2 Percent Annual Chance Flood Hazard Contained in Channel | | |
| Subject Property | Parcels | |

COASTAL HIGH HAZARD AREA MAP

BREVARD MEDICAL CITY, LLC; BREVARD MEDICAL CITY OWNERS ASSOC., INC; and CHATEAU MADELEINE, LLC
20Z00014



1:4,800 or 1 inch = 400 feet


This map was compiled from recorded documents and does not reflect an actual survey. The Brevard County Board of County Commissioners does not assume responsibility for errors or omissions hereon.

Produced by BoCC - GIS Date: 8/6/2020

 Subject Property

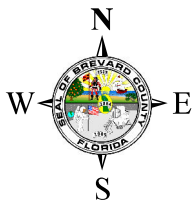
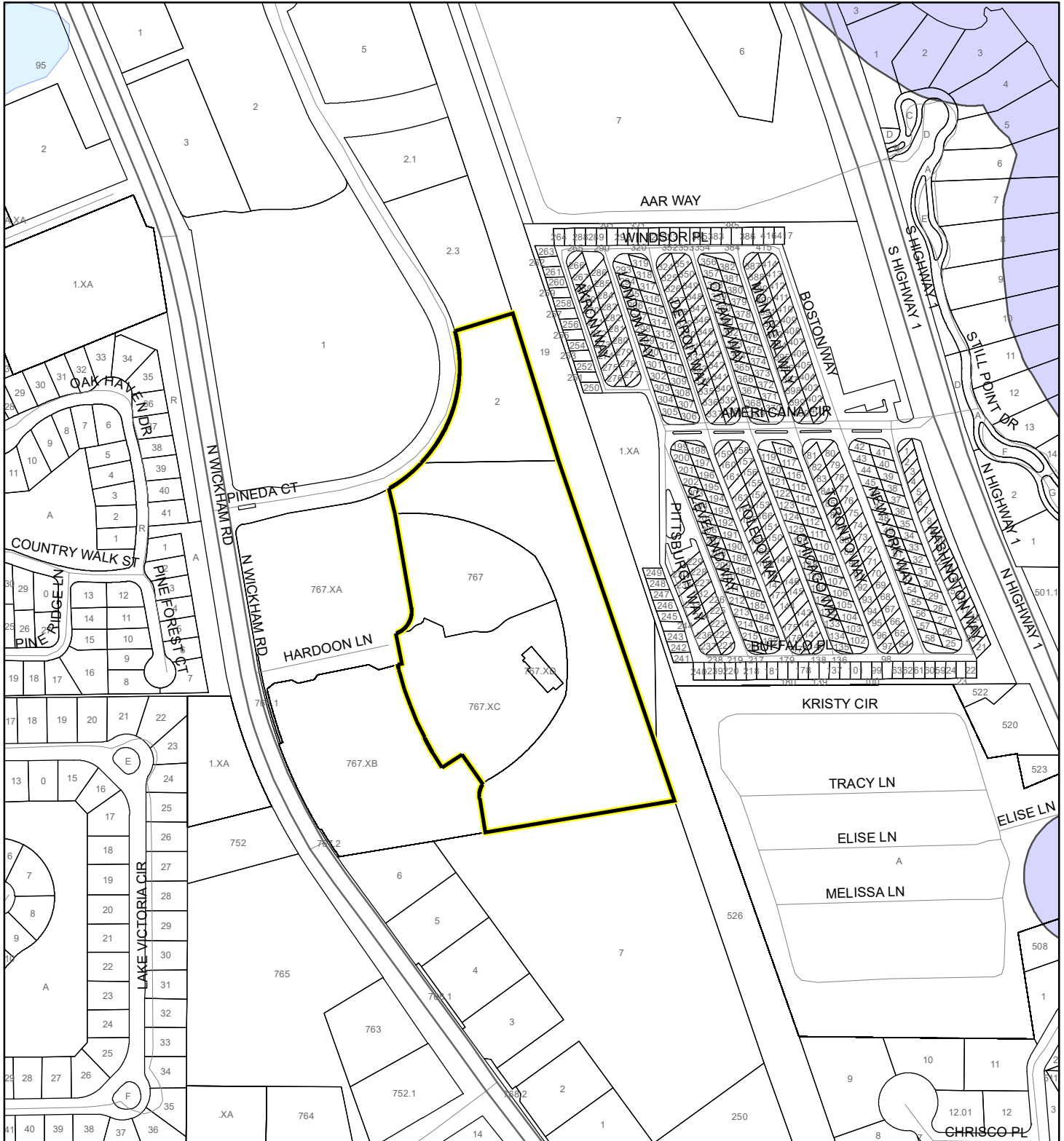
 Parcels

Coastal High Hazard Area

 SurgeZoneCat1

INDIAN RIVER LAGOON SEPTIC OVERLAY MAP

BREVARD MEDICAL CITY, LLC; BREVARD MEDICAL CITY OWNERS ASSOC., INC; and CHATEAU MADELEINE, LLC
20Z00014



1:4,800 or 1 inch = 400 feet

This map was compiled from recorded documents and does not reflect an actual survey. The Brevard County Board of County Commissioners does not assume responsibility for errors or omissions hereon.

Produced by BoCC - GIS Date: 8/6/2020

 Subject Property

 Parcels

Septic Overlay

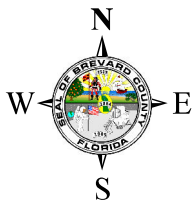
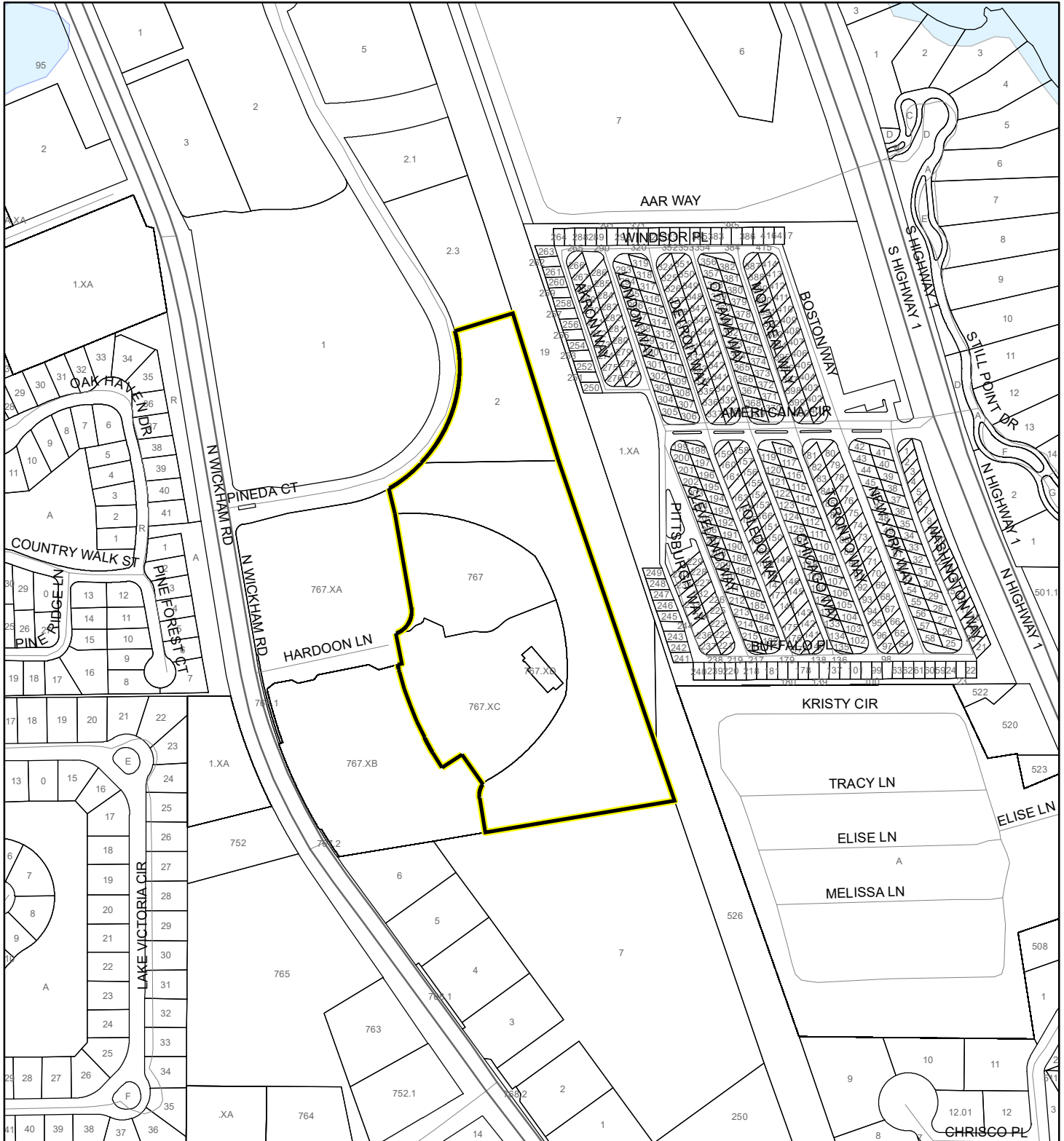
 40 Meters

 60 Meters

 All Distances

EAGLE NESTS MAP

BREVARD MEDICAL CITY, LLC; BREVARD MEDICAL CITY OWNERS ASSOC., INC; and CHATEAU MADELEINE, LLC
20Z00014




1:4,800 or 1 inch = 400 feet

This map was compiled from recorded documents and does not reflect an actual survey. The Brevard County Board of County Commissioners does not assume responsibility for errors or omissions hereon.

Produced by BoCC - GIS Date: 8/6/2020

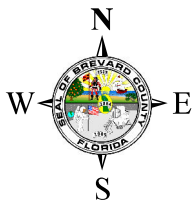
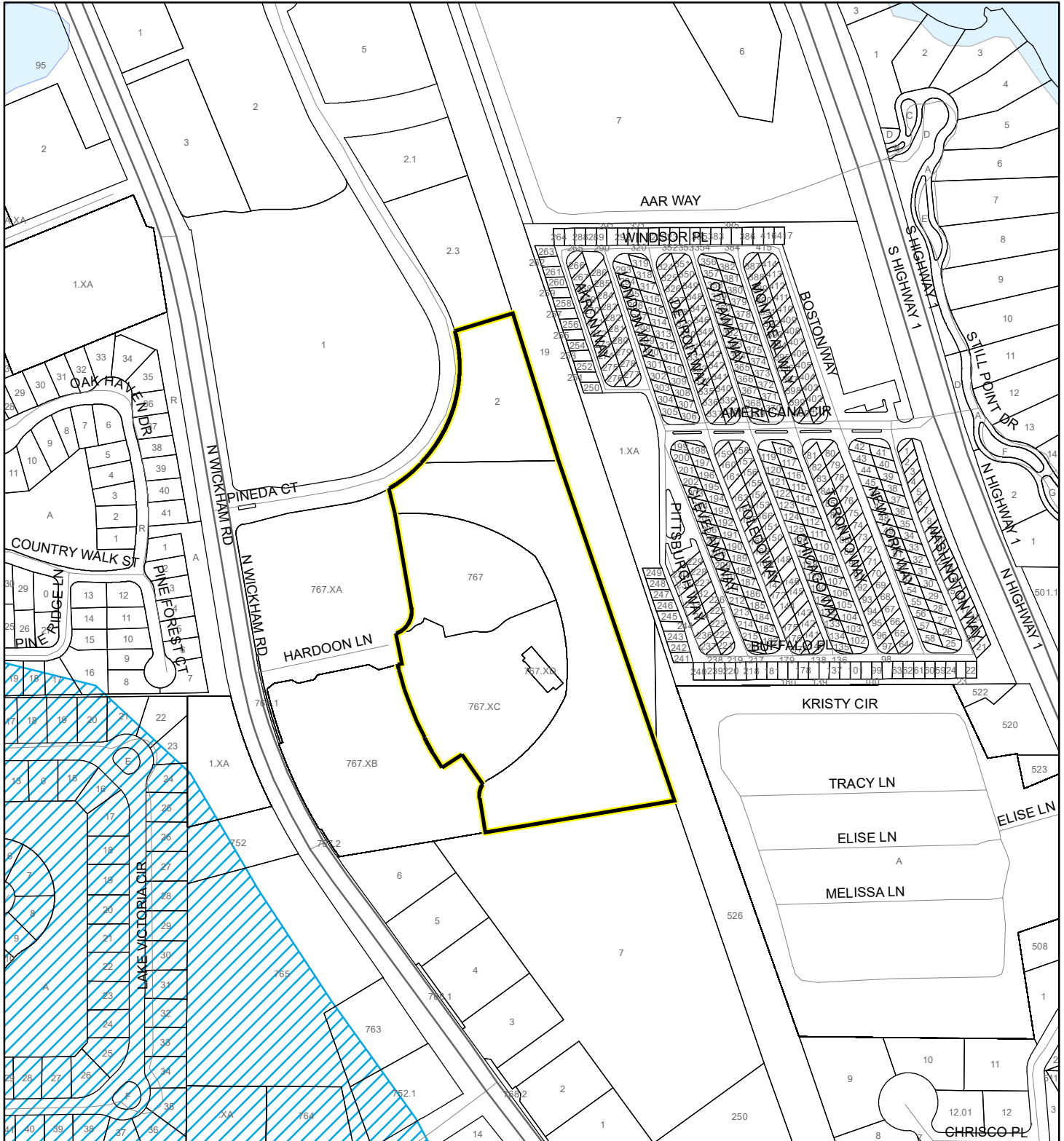
 Subject Property

 Parcels

 Eagle Nests
FWS 2010

SCRUB JAY OCCUPANCY MAP

BREVARD MEDICAL CITY, LLC; BREVARD MEDICAL CITY OWNERS ASSOC., INC; and CHATEAU MADELEINE, LLC
20Z00014



1:4,800 or 1 inch = 400 feet

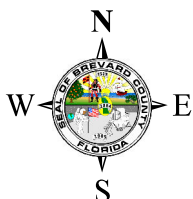
This map was compiled from recorded documents and does not reflect an actual survey. The Brevard County Board of County Commissioners does not assume responsibility for errors or omissions hereon.

Produced by BoCC - GIS Date: 8/6/2020

- Subject Property
- Parcels
- Scrub Jay Occupancy

SJRWMD FLUCCS UPLAND FORESTS - 4000 Series MAP

BREVARD MEDICAL CITY, LLC; BREVARD MEDICAL CITY OWNERS ASSOC., INC; and CHATEAU MADELEINE, LLC
20Z00014



1:4,800 or 1 inch = 400 feet

This map was compiled from recorded documents and does not reflect an actual survey. The Brevard County Board of County Commissioners does not assume responsibility for errors or omissions hereon.

Produced by BoCC - GIS Date: 8/6/2020

SJRWMD FLUCCS Upland Forests

- Upland Coniferous Forest - 4100 Series
- Upland Hardwood Forest - 4200 Series
- Upland Mixed Forest - 4300 Series
- Tree Plantations - 4400 Series

Subject Property

Parcels