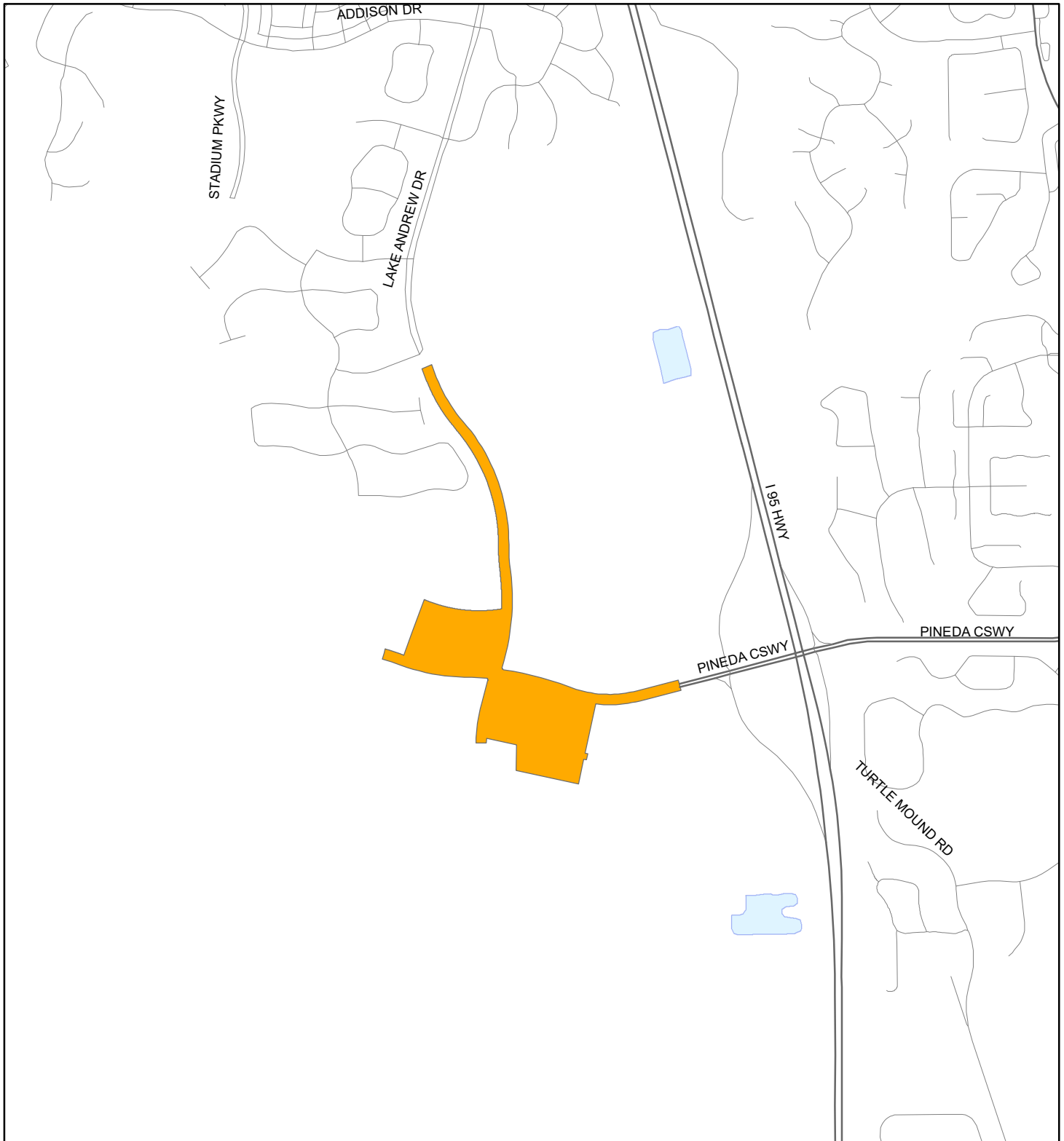


LOCATION MAP

LAKE ANDREW DRIVE - SEGMENT E AND PINEDA BOULEVARD SEGMENT I PHASE 1

19SD00016



1:24,000 or 1 inch = 2,000 feet

 Subject Property

This map was compiled from recorded documents and does not reflect an actual survey. The Brevard County Board of County Commissioners does not assume responsibility for errors or omissions hereon.

Produced by BoCC - GIS Date: 7/14/2020