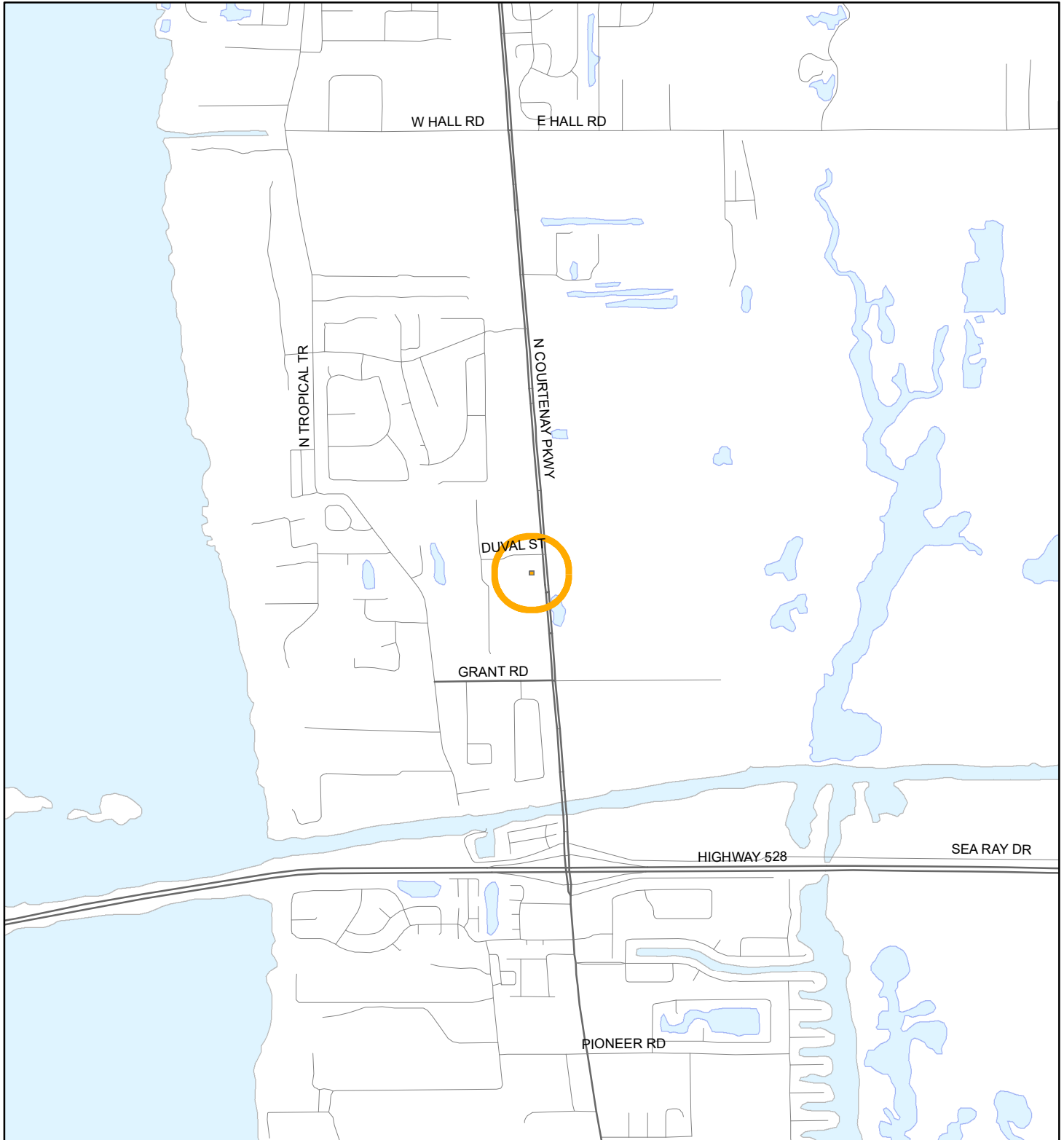


LOCATION MAP

MI PLAZA GROUP, LLC
20PZ00027_CUP_FOR_ALCOHOL



1:24,000 or 1 inch = 2,000 feet

Buffer Distance: 500 feet

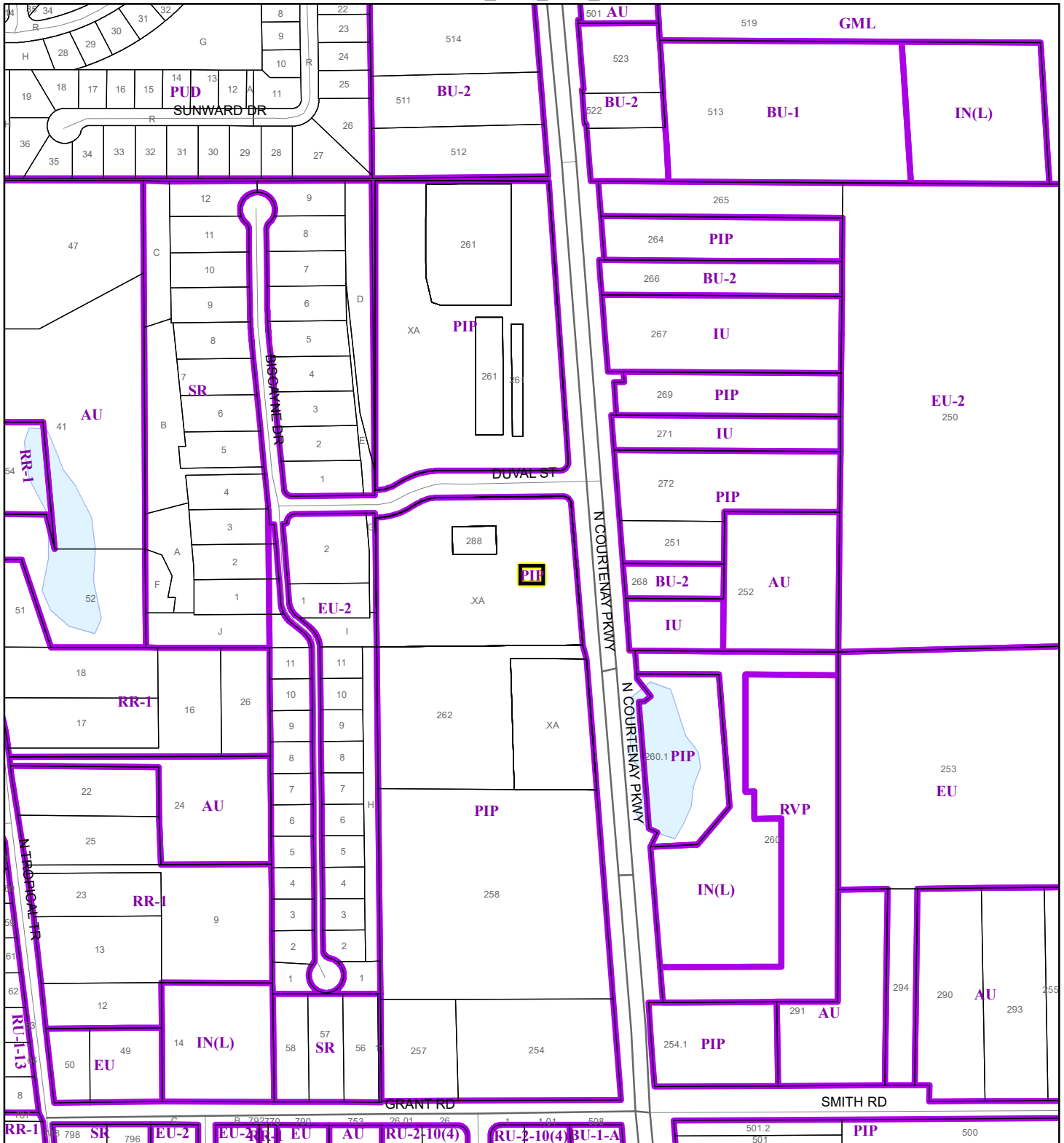
This map was compiled from recorded documents and does not reflect an actual survey. The Brevard County Board of County Commissioners does not assume responsibility for errors or omissions hereon.

Produced by BoCC - GIS Date: 3/12/2020

— Buffer
— Subject Property

ZONING MAP


MI PLAZA GROUP, LLC
20PZ00027_CUP_FOR_ALCOHOL



1:4,800 or 1 inch = 400 feet

This map was compiled from recorded documents and does not reflect an actual survey. The Brevard County Board of County Commissioners does not assume responsibility for errors or omissions hereon.

Produced by BoCC - GIS Date: 3/12/2020

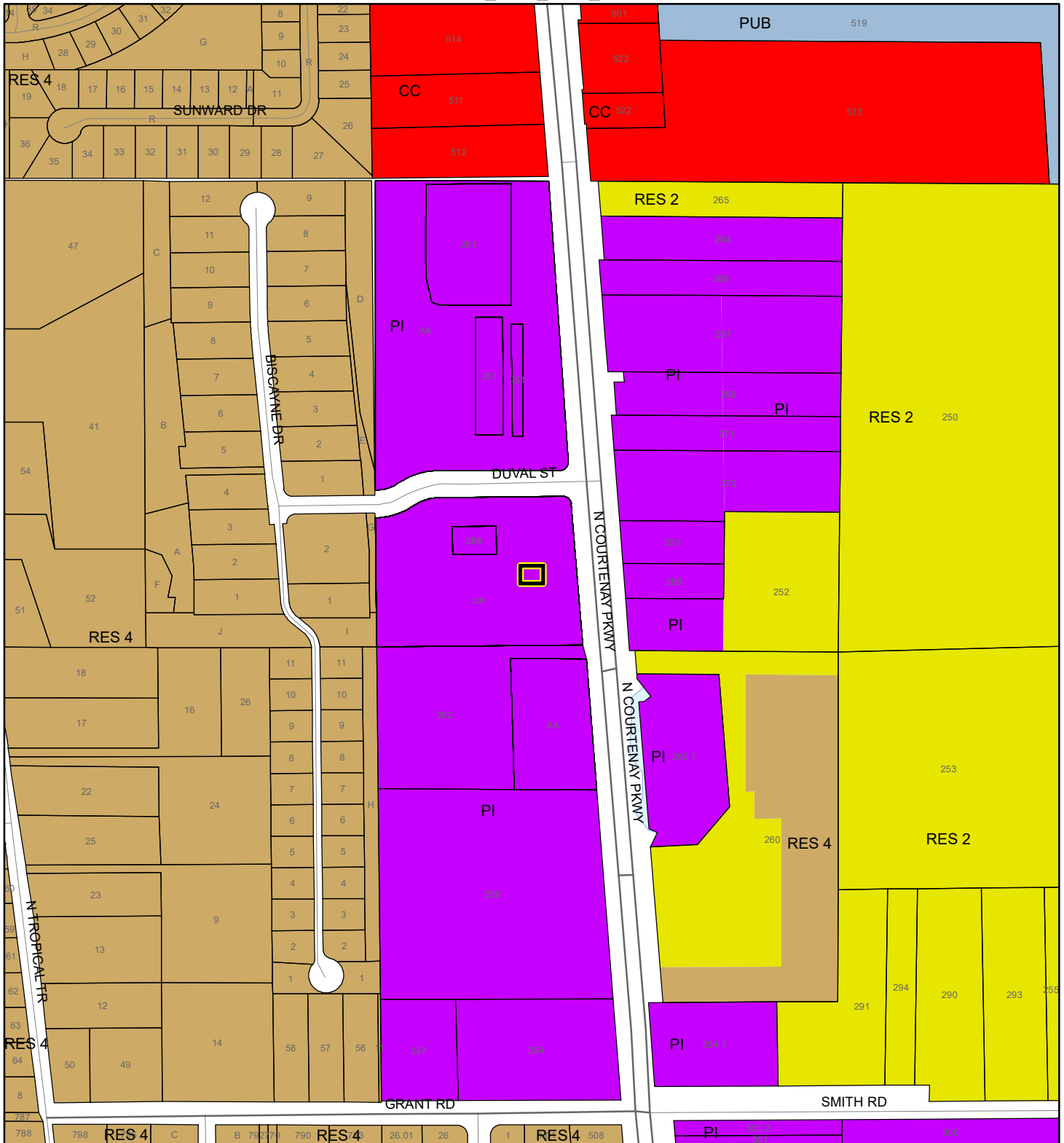
 Subject Property

 Parcels

 Zoning

FUTURE LAND USE MAP

MI PLAZA GROUP, LLC
20PZ00027_CUP_FOR_ALCOHOL



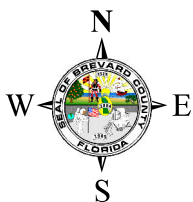
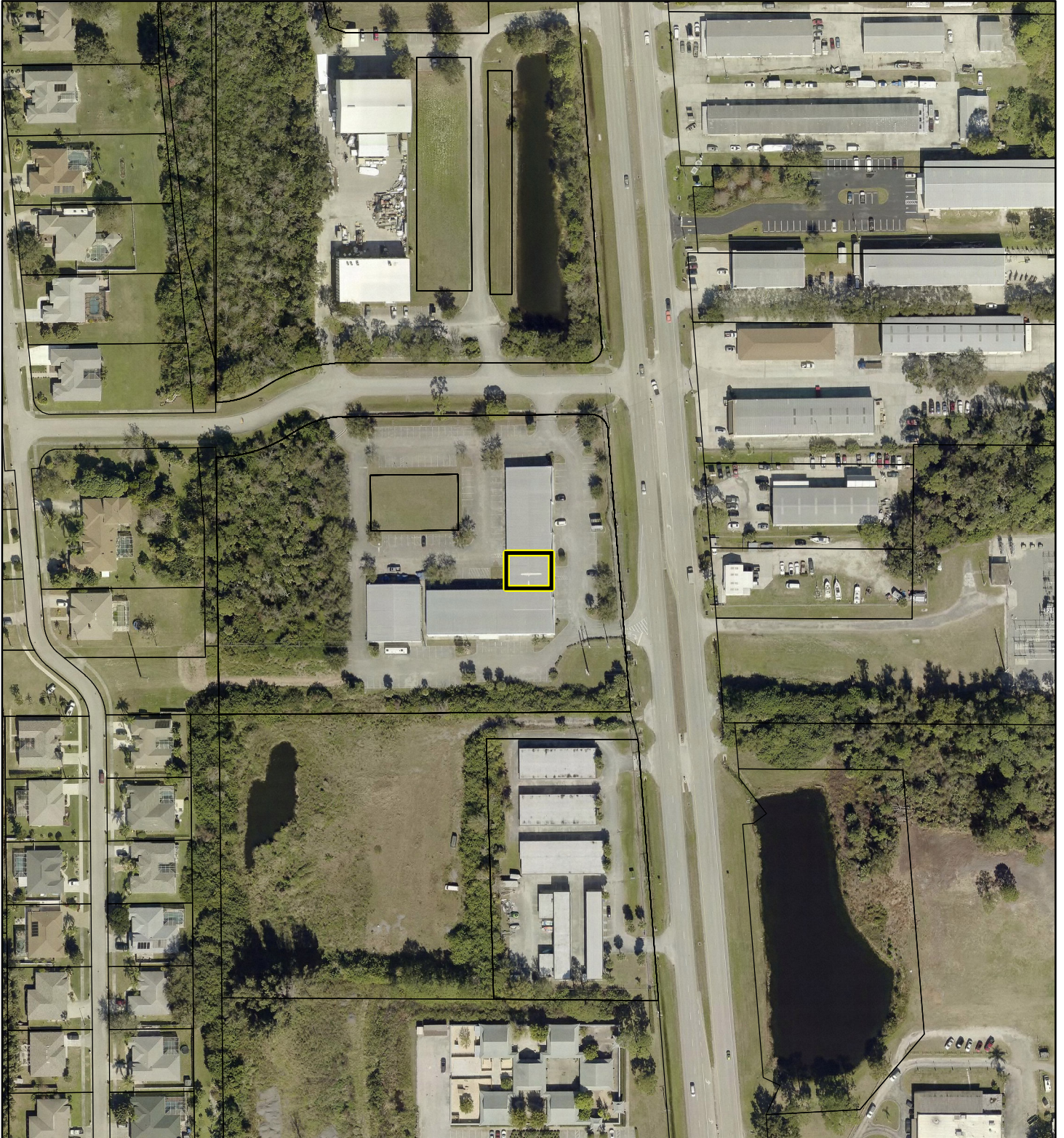
1:4,800 or 1 inch = 400 feet

Subject Property
 Parcels

This map was compiled from recorded documents and does not reflect an actual survey. The Brevard County Board of County Commissioners does not assume responsibility for errors or omissions hereon.

Produced by BoCC - GIS Date: 3/12/2020

AERIAL MAP
MI PLAZA GROUP, LLC
20PZ00027_CUP_FOR_ALCOHOL





1:2,400 or 1 inch = 200 feet

PHOTO YEAR: 2019

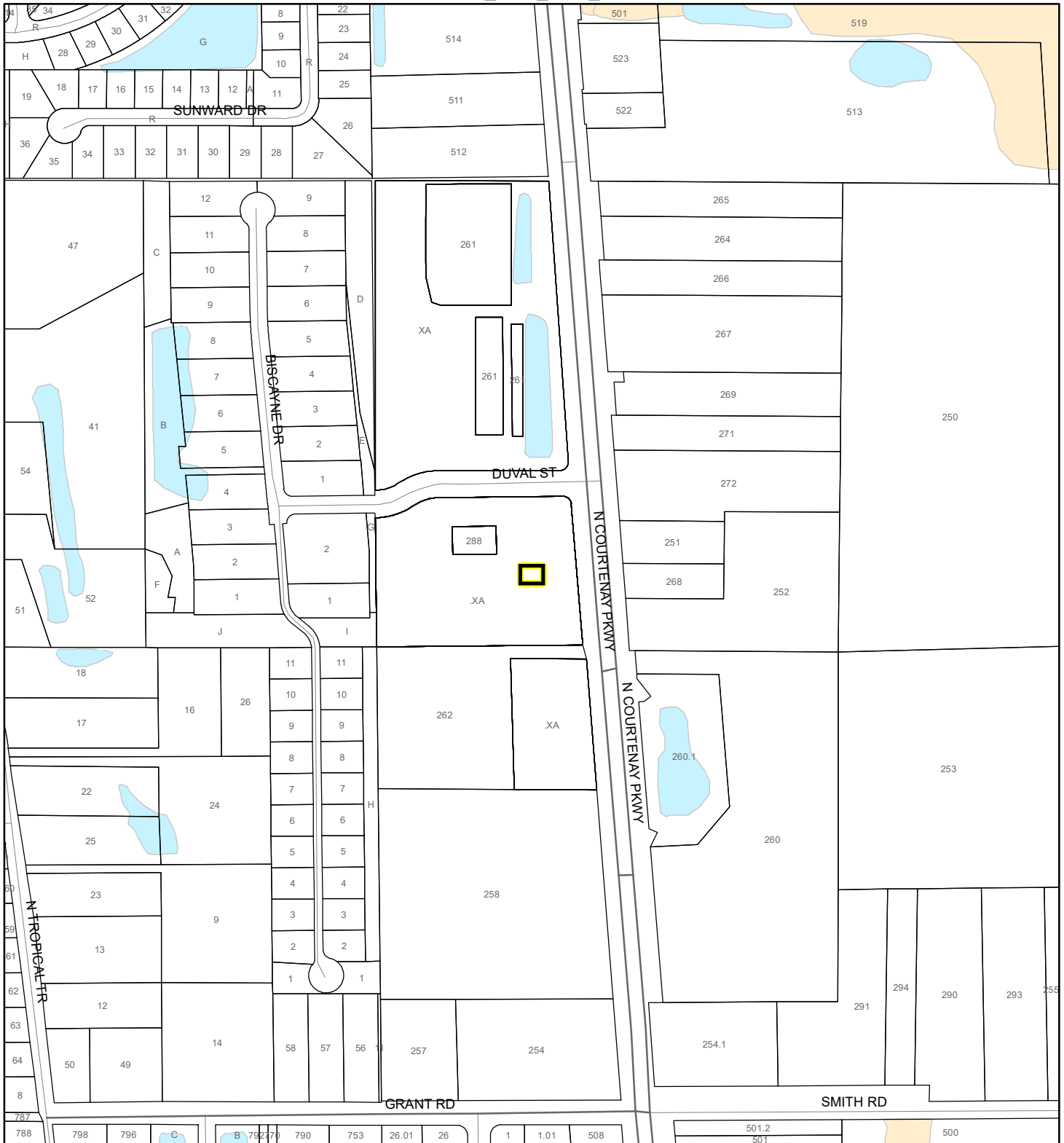
This map was compiled from recorded documents and does not reflect an actual survey. The Brevard County Board of County Commissioners does not assume responsibility for errors or omissions hereon.

Produced by BoCC - GIS Date: 3/12/2020

 Subject Property
 Parcels

NWI WETLANDS MAP

MI PLAZA GROUP, LLC
20PZ00027_CUP_FOR_ALCOHOL



1:4,800 or 1 inch = 400 feet

This map was compiled from recorded documents and does not reflect an actual survey. The Brevard County Board of County Commissioners does not assume responsibility for errors or omissions hereon.

Produced by BoCC - GIS Date: 3/12/2020

National Wetlands Inventory (NWI)

Estuarine and Marine Deepwater	Freshwater Pond
Estuarine and Marine Wetland	Lake
Freshwater Emergent Wetland	Other
Freshwater Forested/Shrub Wetland	Riverine
	Subject Property
	Parcels

SJRWMD FLUCCS WETLANDS - 6000 Series MAP

MI PLAZA GROUP, LLC
20PZ00027_CUP_FOR_ALCOHOL



1:4,800 or 1 inch = 400 feet

This map was compiled from recorded documents and does not reflect an actual survey. The Brevard County Board of County Commissioners does not assume responsibility for errors or omissions hereon.

Produced by BoCC - GIS Date: 3/12/2020

SJRWMD FLUCCS WETLANDS

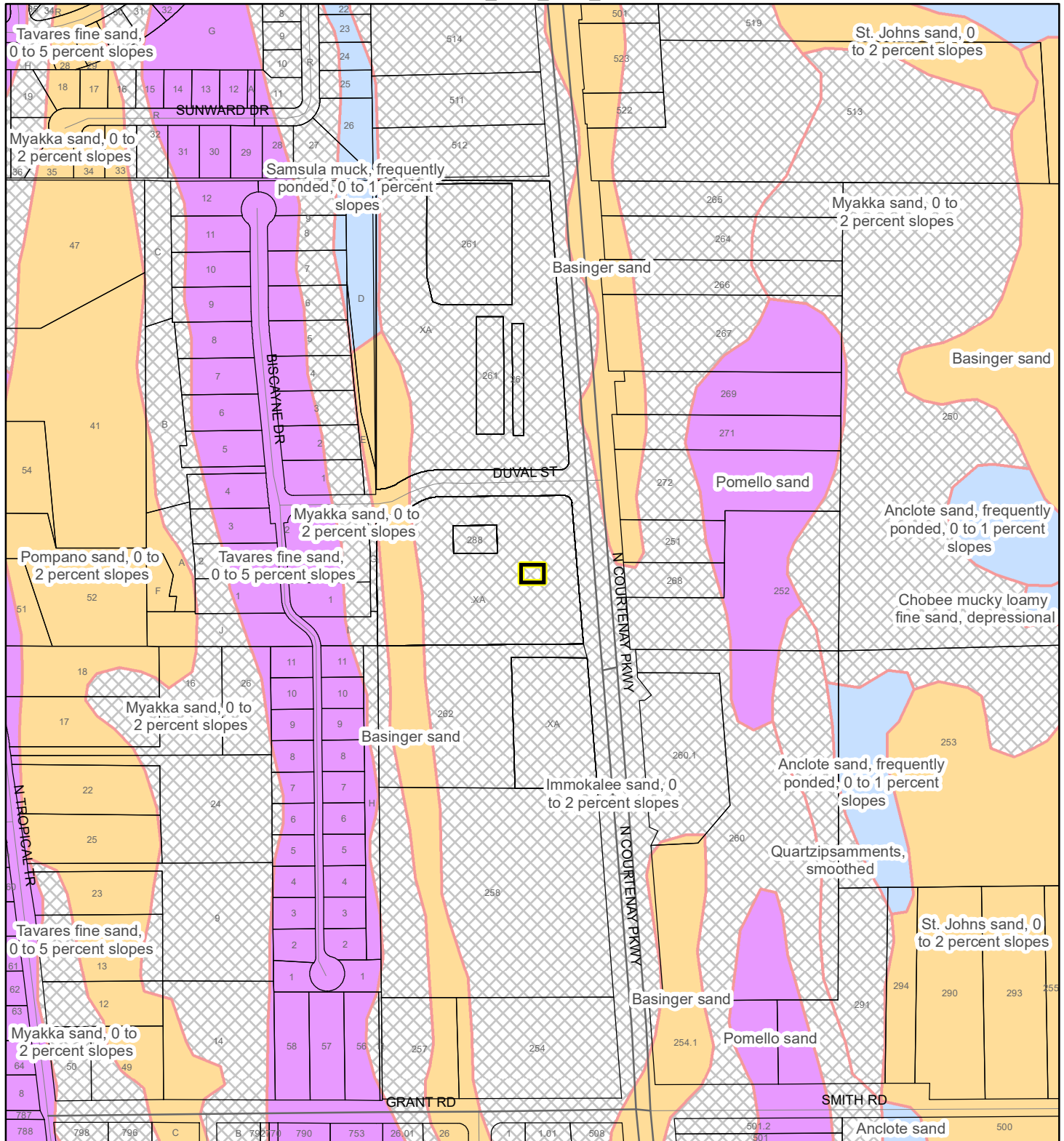
- Wetland Hardwood Forests - Series 6100
- Wetland Coniferous Forest - Series 6200
- Wetland Forested Mixed - Series 6300
- Vegetated Non-Forested Wetlands - Series 6400
- Non-Vegetated Wetland - Series 6500

Subject Property

Parcels

USDA SCSSS SOILS MAP

MI PLAZA GROUP, LLC
20PZ00027_CUP_FOR_ALCOHOL



1:4,800 or 1 inch = 400 feet

This map was compiled from recorded documents and does not reflect an actual survey. The Brevard County Board of County Commissioners does not assume responsibility for errors or omissions hereon.

Produced by BoCC - GIS Date: 3/12/2020

USDA SCSSS Soils

- Aquifer and Hydric
- Aquifer
- Hydric
- None

Subject Property

Parcels

FEMA FLOOD ZONES MAP

MI PLAZA GROUP, LLC
20PZ00027_CUP_FOR_ALCOHOL



1:4,800 or 1 inch = 400 feet

This map was compiled from recorded documents and does not reflect an actual survey. The Brevard County Board of County Commissioners does not assume responsibility for errors or omissions hereon.

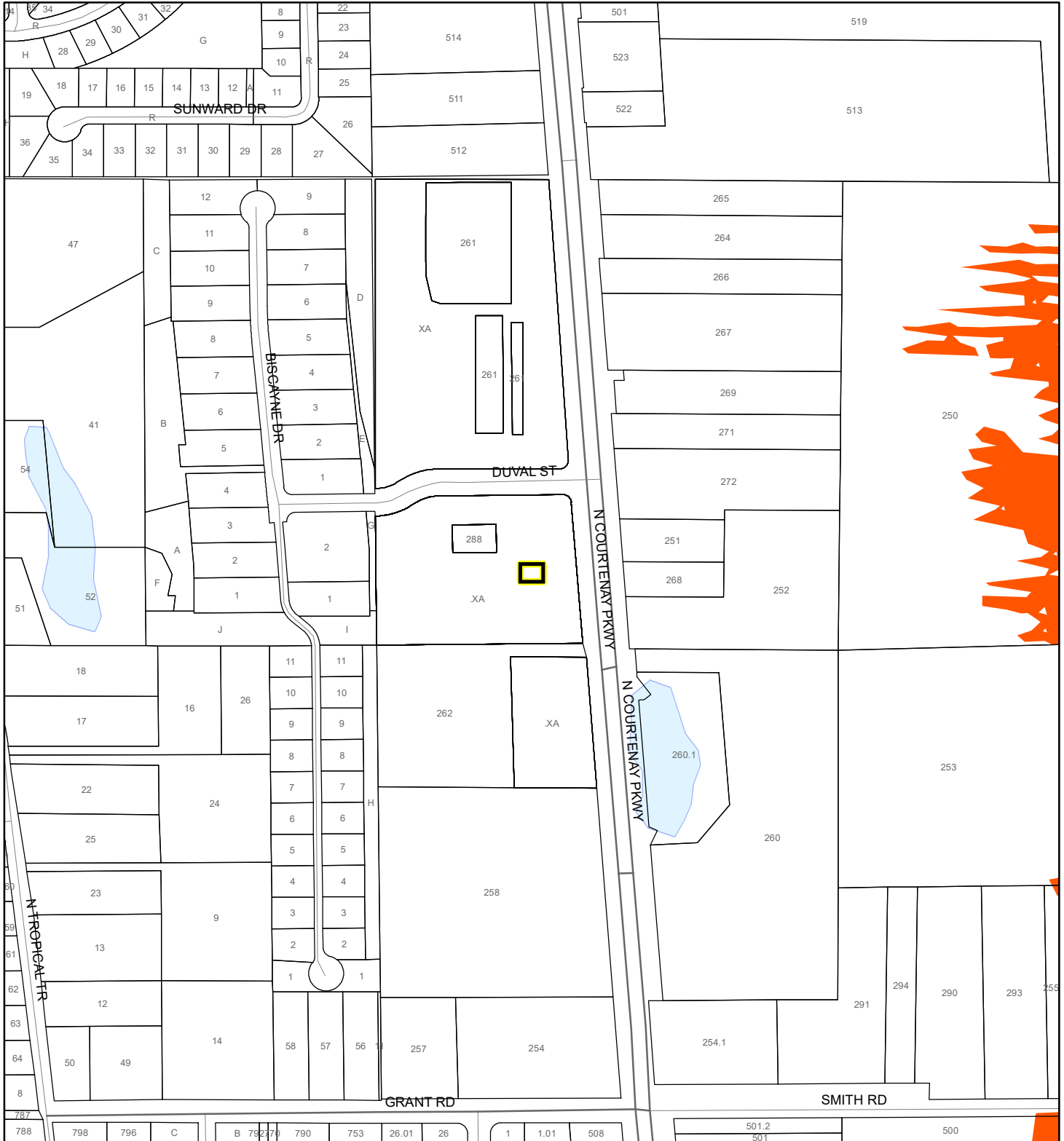
Produced by BoCC - GIS Date: 3/12/2020

FEMA Flood Zones

- | | | |
|---|------------|----------------------|
| A | AO | X |
| AE | Open Water | X Protected By Levee |
| AH | VE | |
| 0.2 Percent Annual Chance Flood Hazard | | |
| 0.2 Percent Annual Chance Flood Hazard Contained in Channel | | |
| Subject Property | | Parcels |

COASTAL HIGH HAZARD AREA MAP

MI PLAZA GROUP, LLC
20PZ00027_CUP_FOR_ALCOHOL



1:4,800 or 1 inch = 400 feet


This map was compiled from recorded documents and does not reflect an actual survey. The Brevard County Board of County Commissioners does not assume responsibility for errors or omissions hereon.

Produced by BoCC - GIS Date: 3/12/2020

 Subject Property

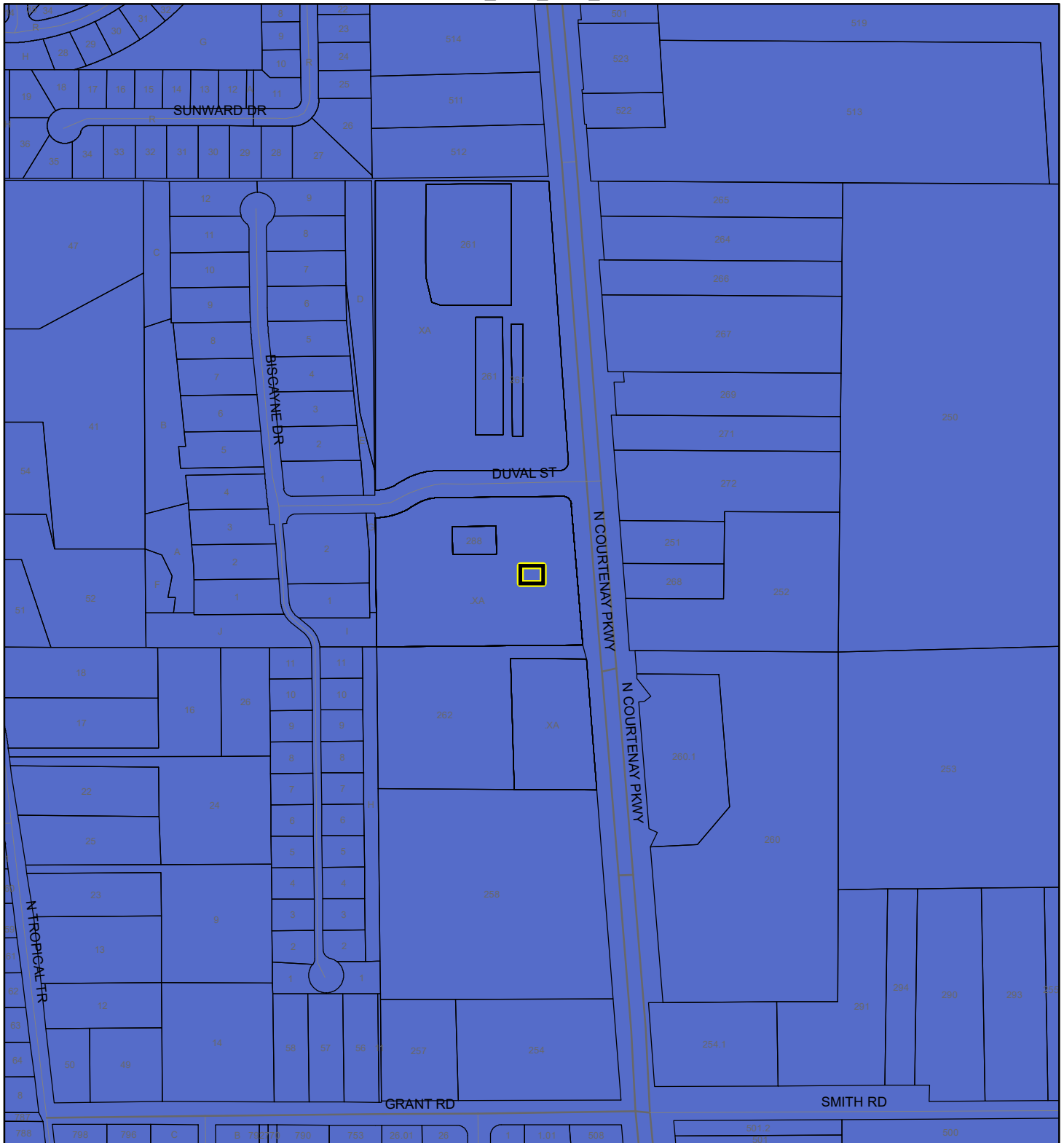
 Parcels

Coastal High Hazard Area

 SurgeZoneCat1

INDIAN RIVER LAGOON SEPTIC OVERLAY MAP

MI PLAZA GROUP, LLC
20PZ00027_CUP_FOR_ALCOHOL



1:4,800 or 1 inch = 400 feet

This map was compiled from recorded documents and does not reflect an actual survey. The Brevard County Board of County Commissioners does not assume responsibility for errors or omissions hereon.

Produced by BoCC - GIS Date: 3/12/2020

 Subject Property

 Parcels

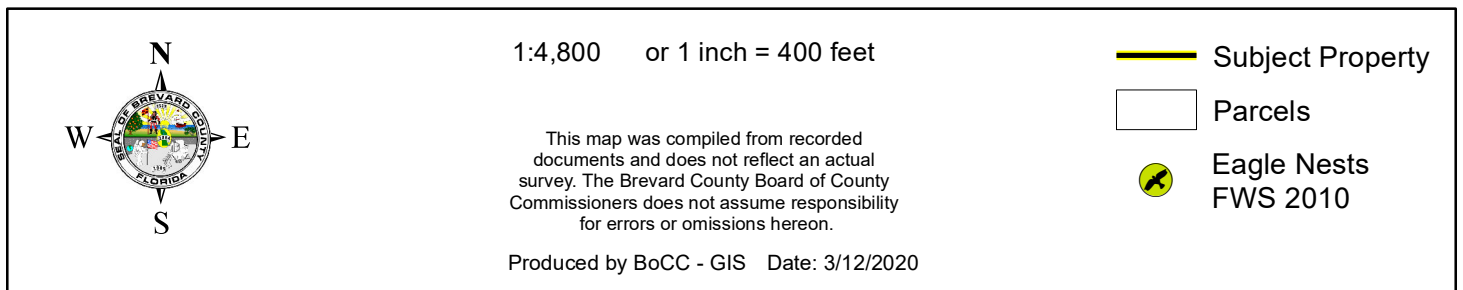
Septic Overlay

 40 Meters

 60 Meters

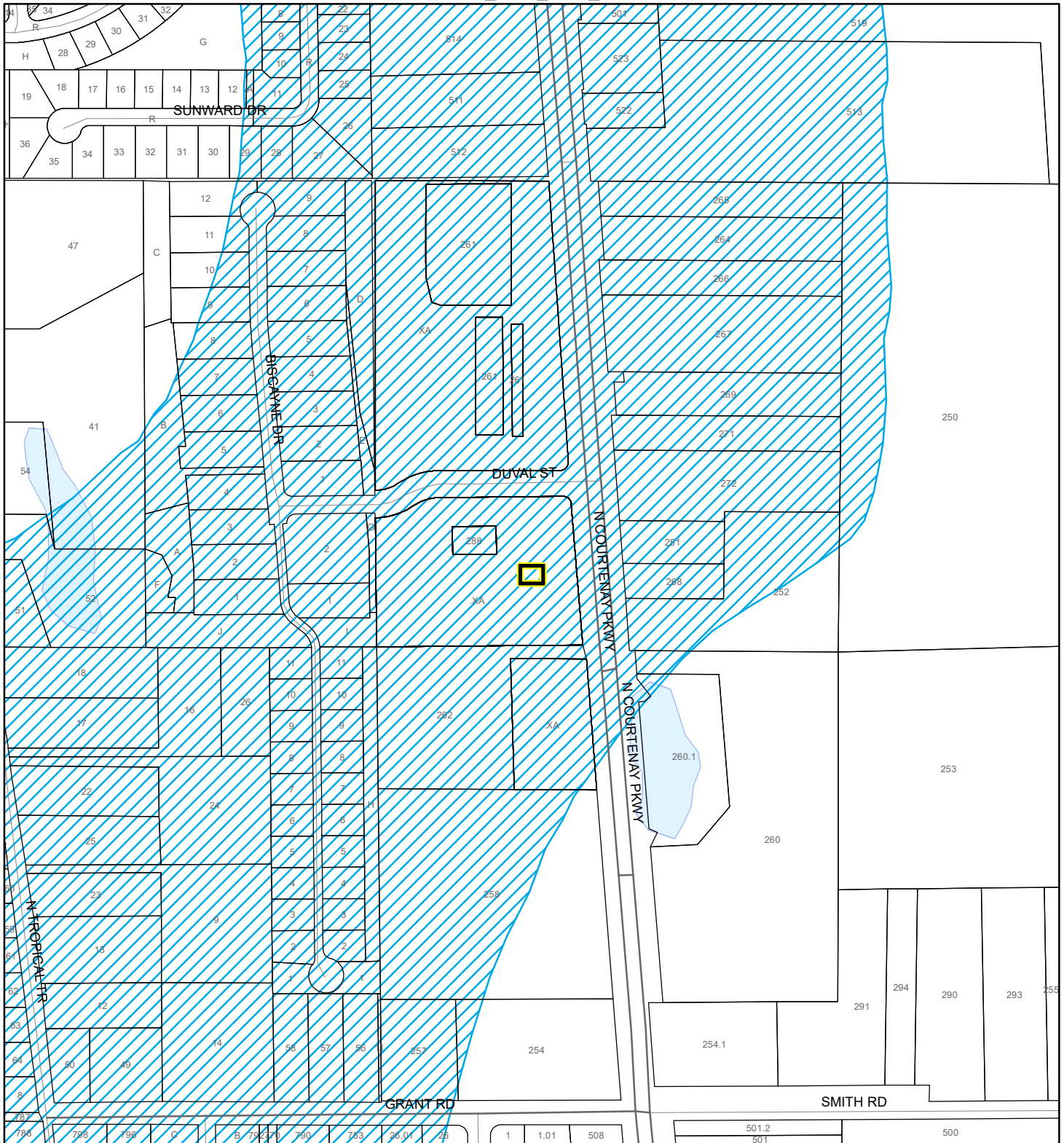
 All Distances

MI PLAZA GROUP, LLC
20PZ00027_CUP_FOR_ALCOHOL



SCRUB JAY OCCUPANCY MAP




MI PLAZA GROUP, LLC
20PZ00027_CUP_FOR_ALCOHOL



1:4,800 or 1 inch = 400 feet

This map was compiled from recorded documents and does not reflect an actual survey. The Brevard County Board of County Commissioners does not assume responsibility for errors or omissions hereon.

Produced by BoCC - GIS Date: 3/12/2020

-  Subject Property
-  Parcels
-  Scrub Jay Occupancy

MI PLAZA GROUP, LLC
20PZ00027_CUP_FOR_ALCOHOL

