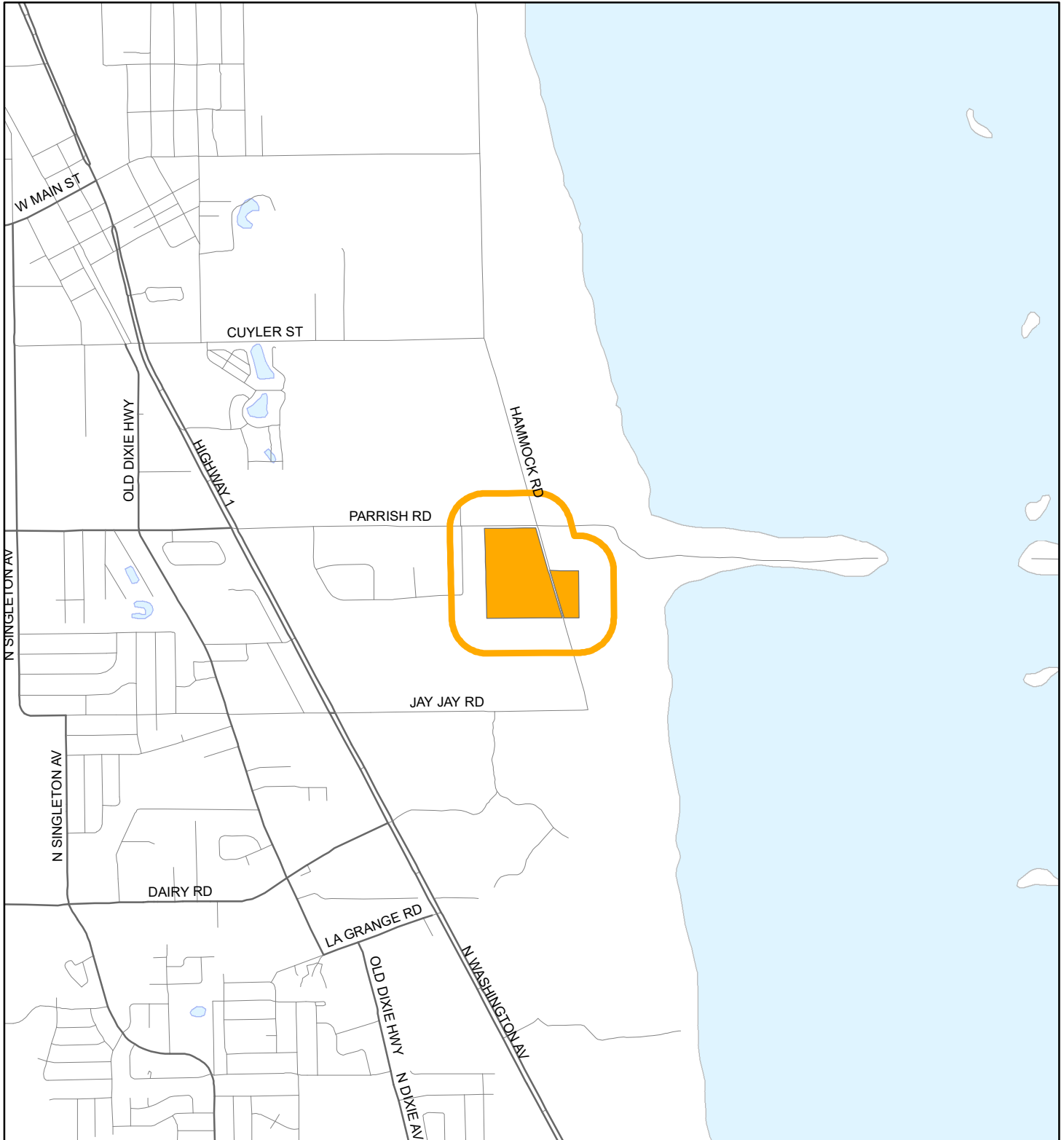


LOCATION MAP

GOODENOW, THEODORE C.

19PZ00158





1:24,000 or 1 inch = 2,000 feet

Buffer Distance: 500 feet

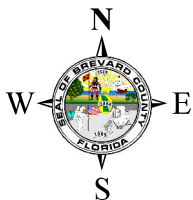
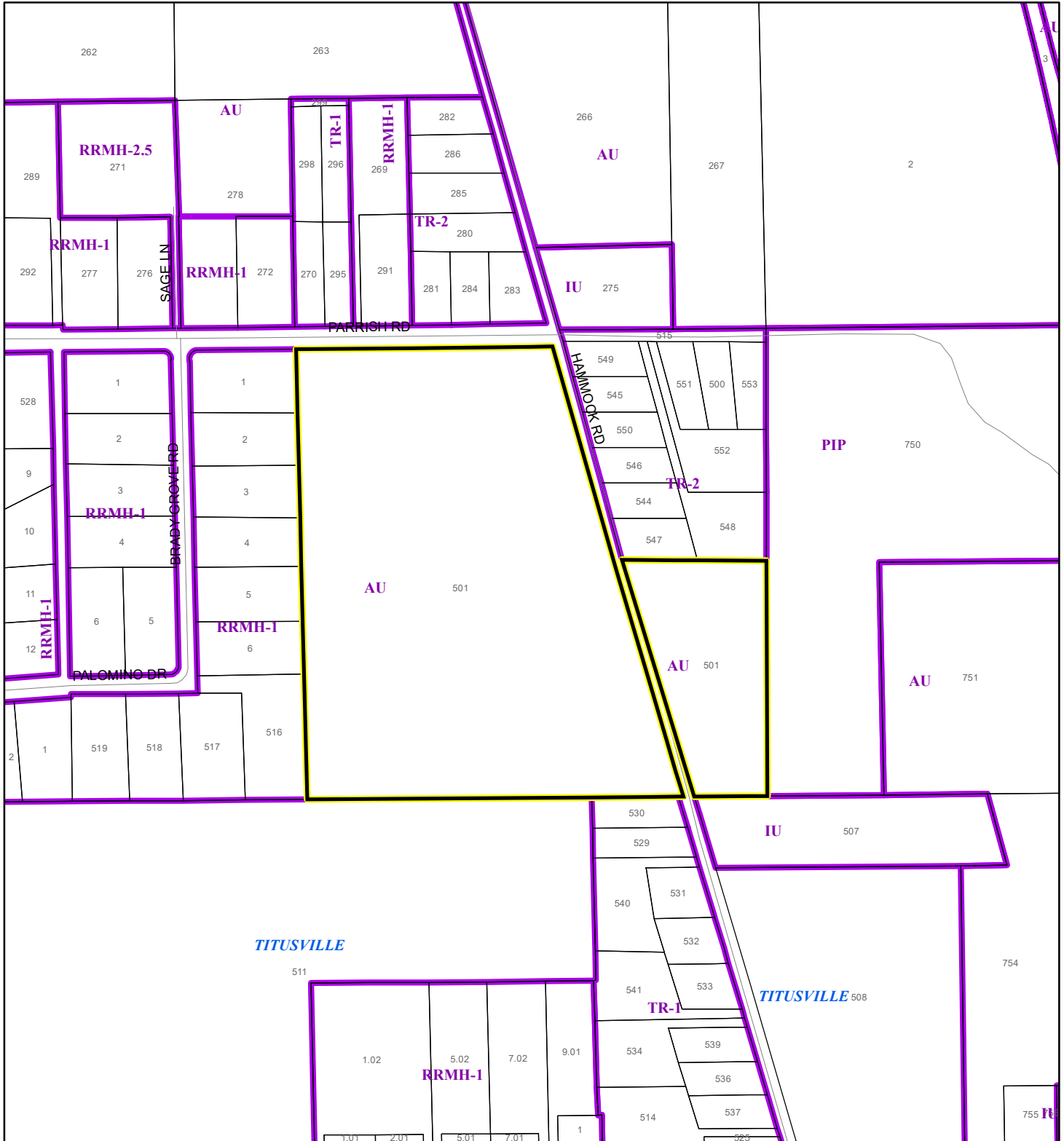
This map was compiled from recorded documents and does not reflect an actual survey. The Brevard County Board of County Commissioners does not assume responsibility for errors or omissions hereon.

Produced by BoCC - GIS Date: 1/6/2020

 Buffer
 Subject Property

ZONING MAP

GOODENOW, THEODORE C.
19PZ00158



1:4,800 or 1 inch = 400 feet

This map was compiled from recorded documents and does not reflect an actual survey. The Brevard County Board of County Commissioners does not assume responsibility for errors or omissions hereon.

Produced by BoCC - GIS Date: 1/6/2020

Subject Property

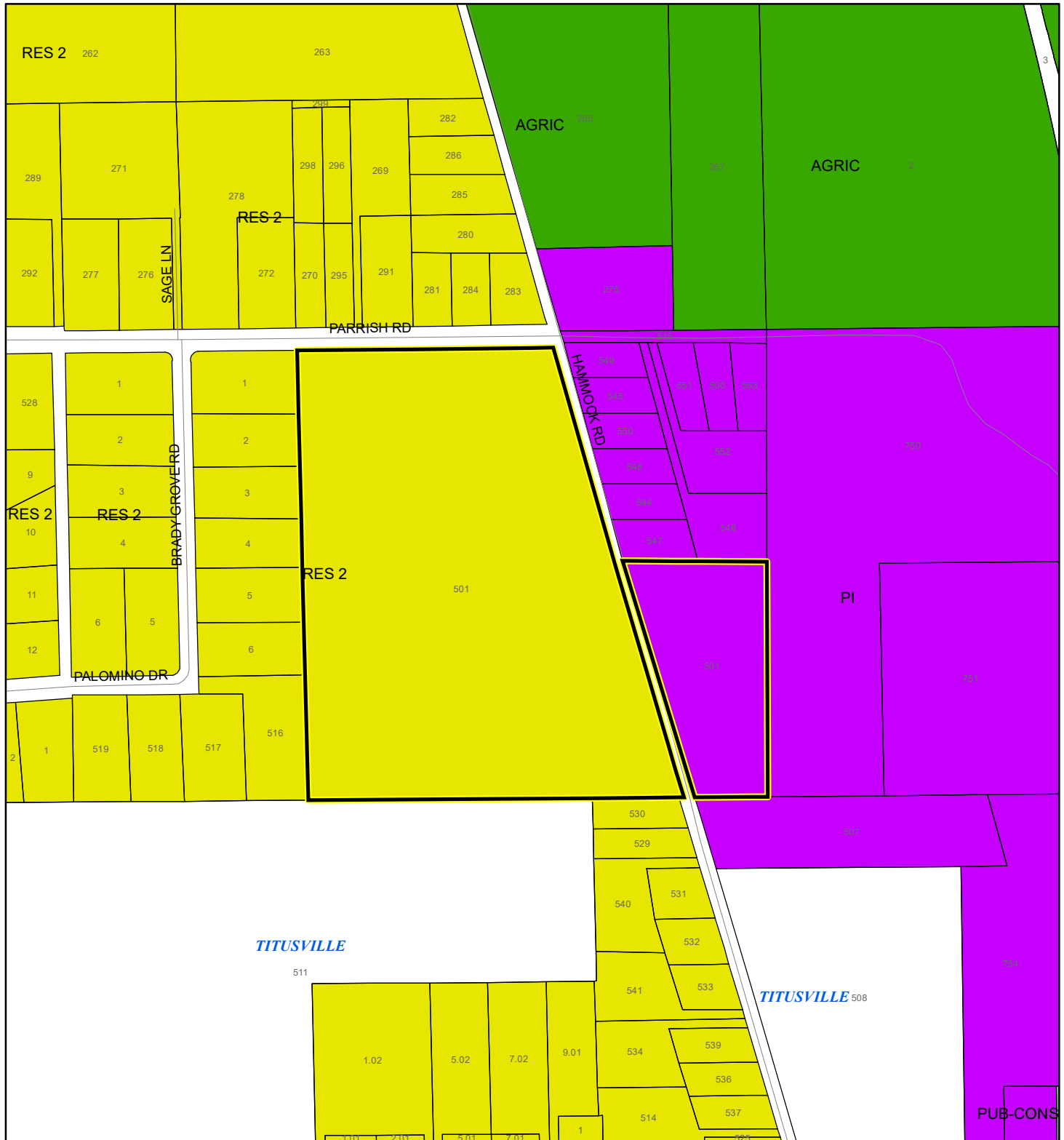
Parcels

Zoning



FUTURE LAND USE MAP

GOODENOW, THEODORE C.

19PZ00158



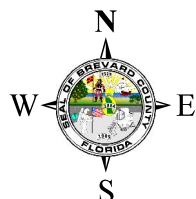
1:4,800 or 1 inch = 400 feet

 Subject Property
 Parcels

This map was compiled from recorded documents and does not reflect an actual survey. The Brevard County Board of County Commissioners does not assume responsibility for errors or omissions hereon.

Produced by BoCC - GIS Date: 1/6/2020

AERIAL MAP
GOODENOW, THEODORE C.
19PZ00158





1:4,800 or 1 inch = 400 feet

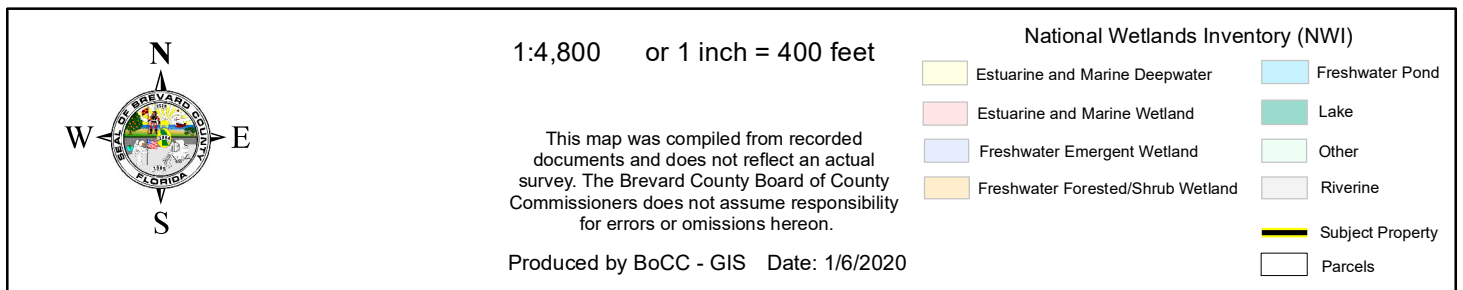
PHOTO YEAR: 2019

This map was compiled from recorded documents and does not reflect an actual survey. The Brevard County Board of County Commissioners does not assume responsibility for errors or omissions hereon.

Produced by BoCC - GIS Date: 1/6/2020

 Subject Property
 Parcels

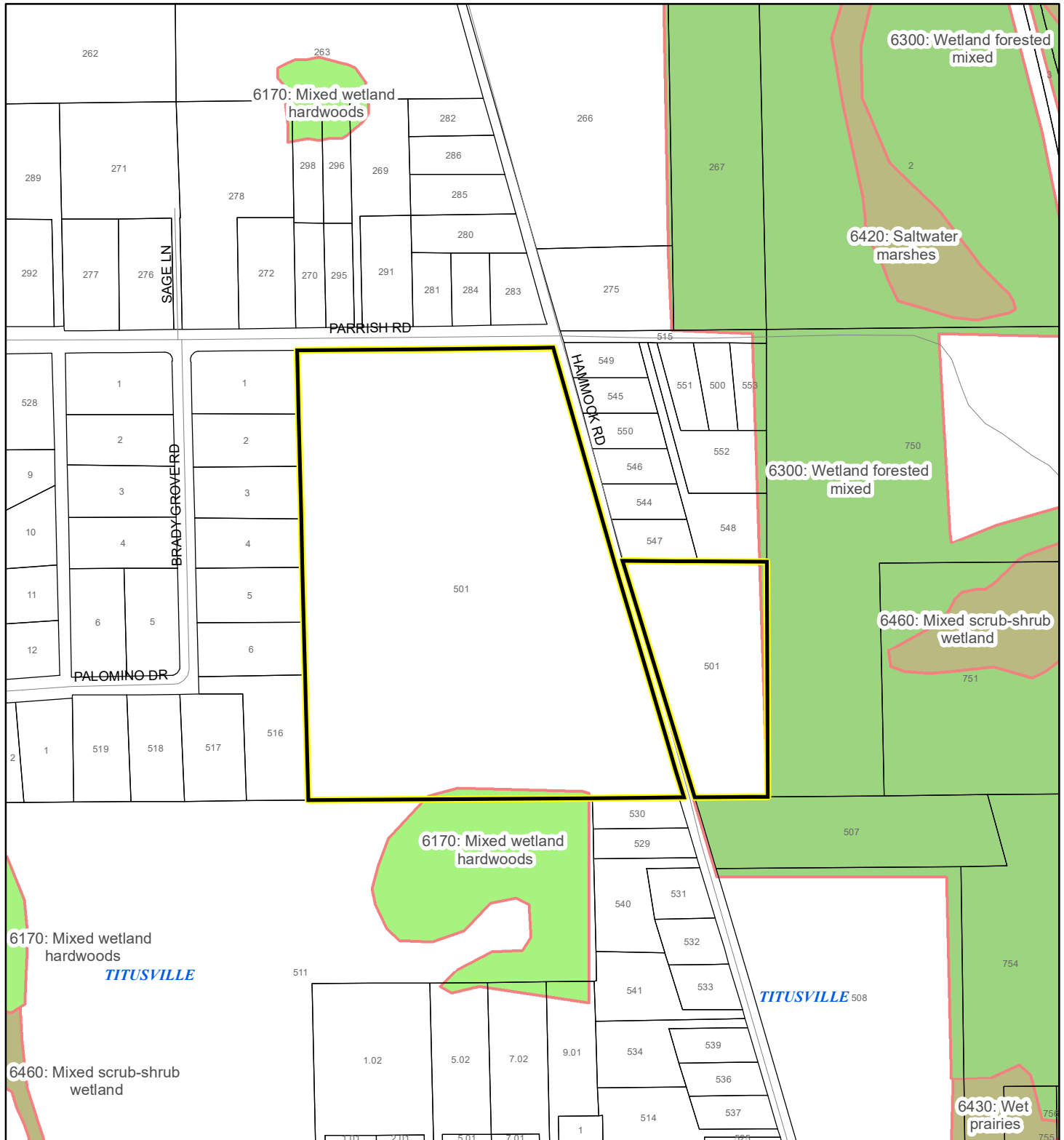
19PZ00158



SJRWMD FLUCCS WETLANDS - 6000 Series MAP

GOODENOW, THEODORE C.

19PZ00158



1:4,800 or 1 inch = 400 feet

This map was compiled from recorded documents and does not reflect an actual survey. The Brevard County Board of County Commissioners does not assume responsibility for errors or omissions hereon.

Produced by BoCC - GIS Date: 1/6/2020

SJRWMD FLUCCS WETLANDS

- Wetland Hardwood Forests - Series 6100
- Wetland Coniferous Forest - Series 6200
- Wetland Forested Mixed - Series 6300
- Vegetated Non-Forested Wetlands - Series 6400
- Non-Vegetated Wetland - Series 6500

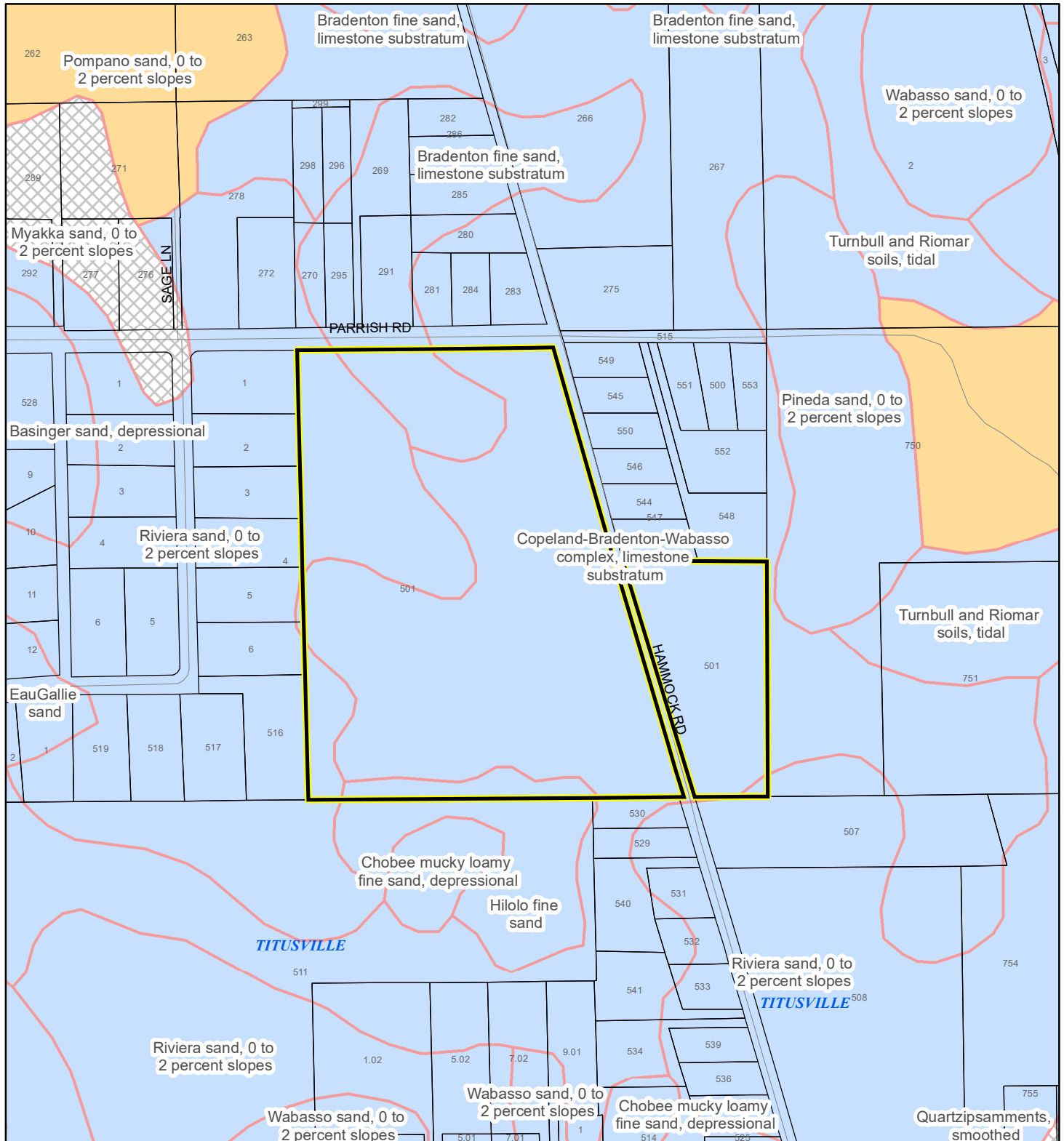
Subject Property

Parcels

USDA SCSSS SOILS MAP

GOODENOW, THEODORE C.

19PZ00158



1:4,800 or 1 inch = 400 feet

This map was compiled from recorded documents and does not reflect an actual survey. The Brevard County Board of County Commissioners does not assume responsibility for errors or omissions hereon.

Produced by BoCC - GIS Date: 1/6/2020

USDA SCSSS Soils

Aquifer and Hydric

Aquifer

Hydric

None

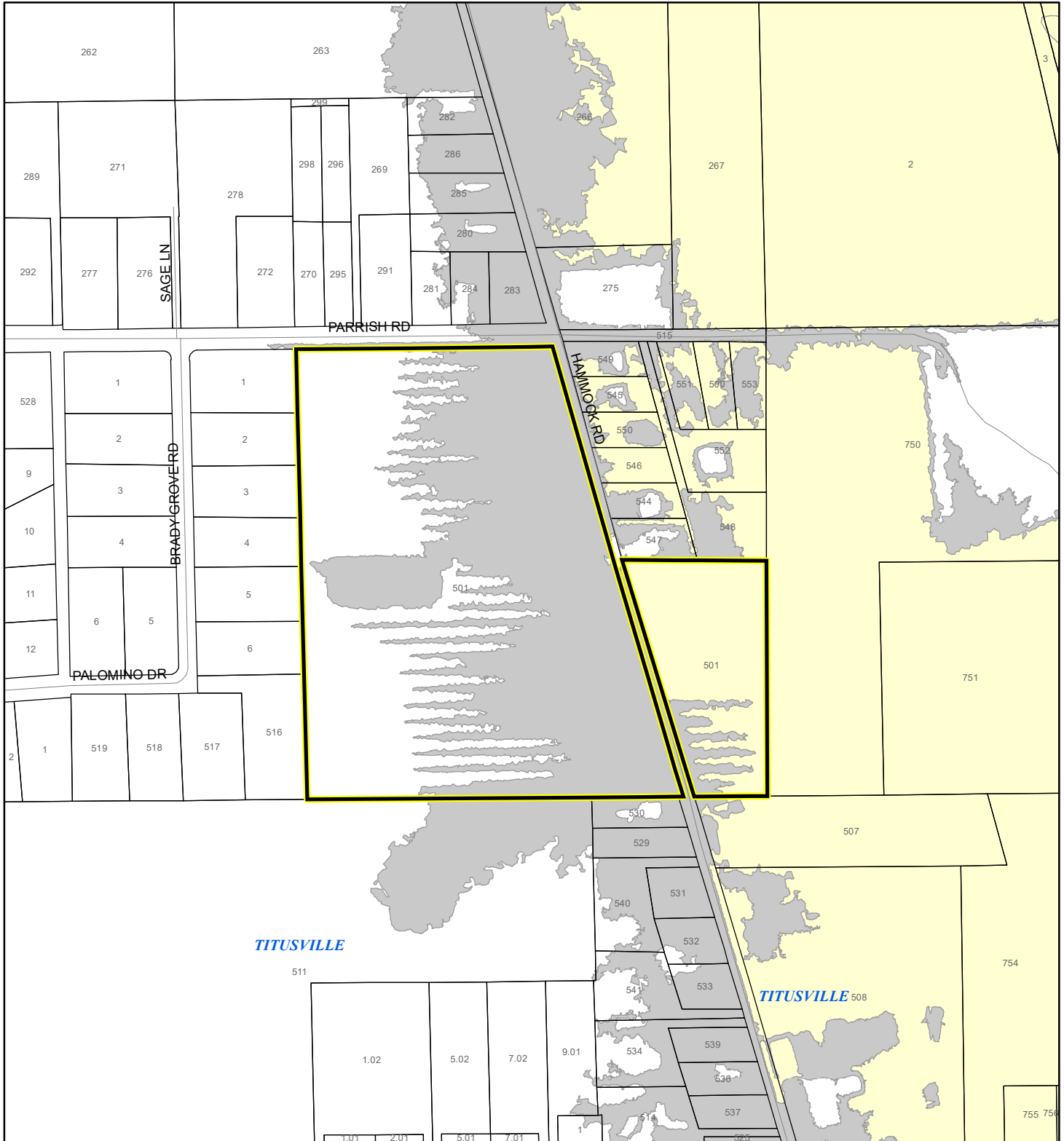
Subject Property

Parcels

FEMA FLOOD ZONES MAP

GOODENOW, THEODORE C.

19PZ00158



1:4,800 or 1 inch = 400 feet

This map was compiled from recorded documents and does not reflect an actual survey. The Brevard County Board of County Commissioners does not assume responsibility for errors or omissions hereon.

Produced by BoCC - GIS Date: 1/6/2020

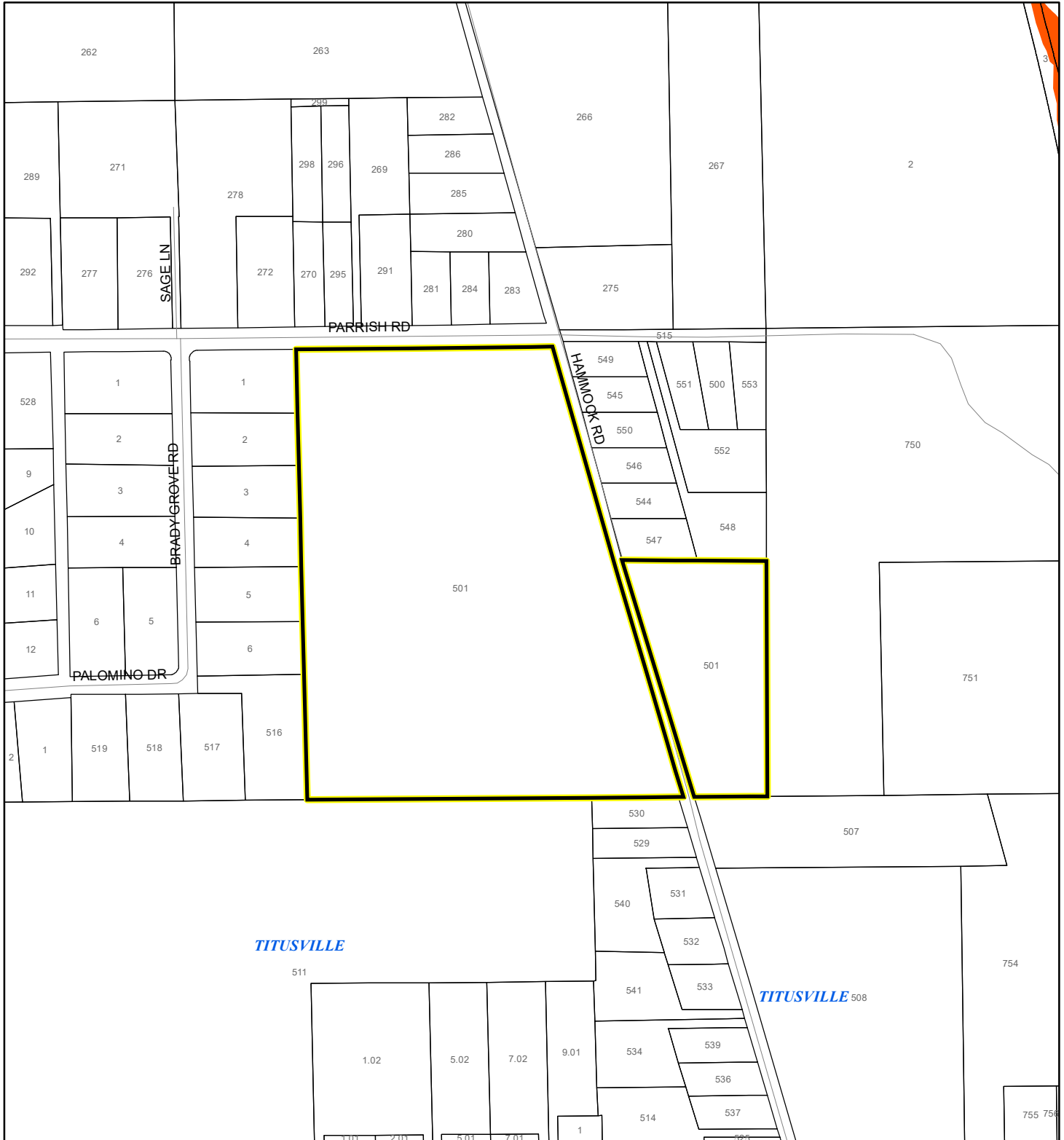
FEMA Flood Zones

 A	 AO	 X
 AE	 Open Water	 X Protected By Levee
 AH	 VE	
 0.2 Percent Annual Chance Flood Hazard		
 0.2 Percent Annual Chance Flood Hazard Contained in Channel		
 Subject Property		 Parcels

COASTAL HIGH HAZARD AREA MAP

GOODENOW, THEODORE C.

19PZ00158



1:4,800 or 1 inch = 400 feet

This map was compiled from recorded documents and does not reflect an actual survey. The Brevard County Board of County Commissioners does not assume responsibility for errors or omissions hereon.

Produced by BoCC - GIS Date: 1/6/2020

 Subject Property

 Parcels

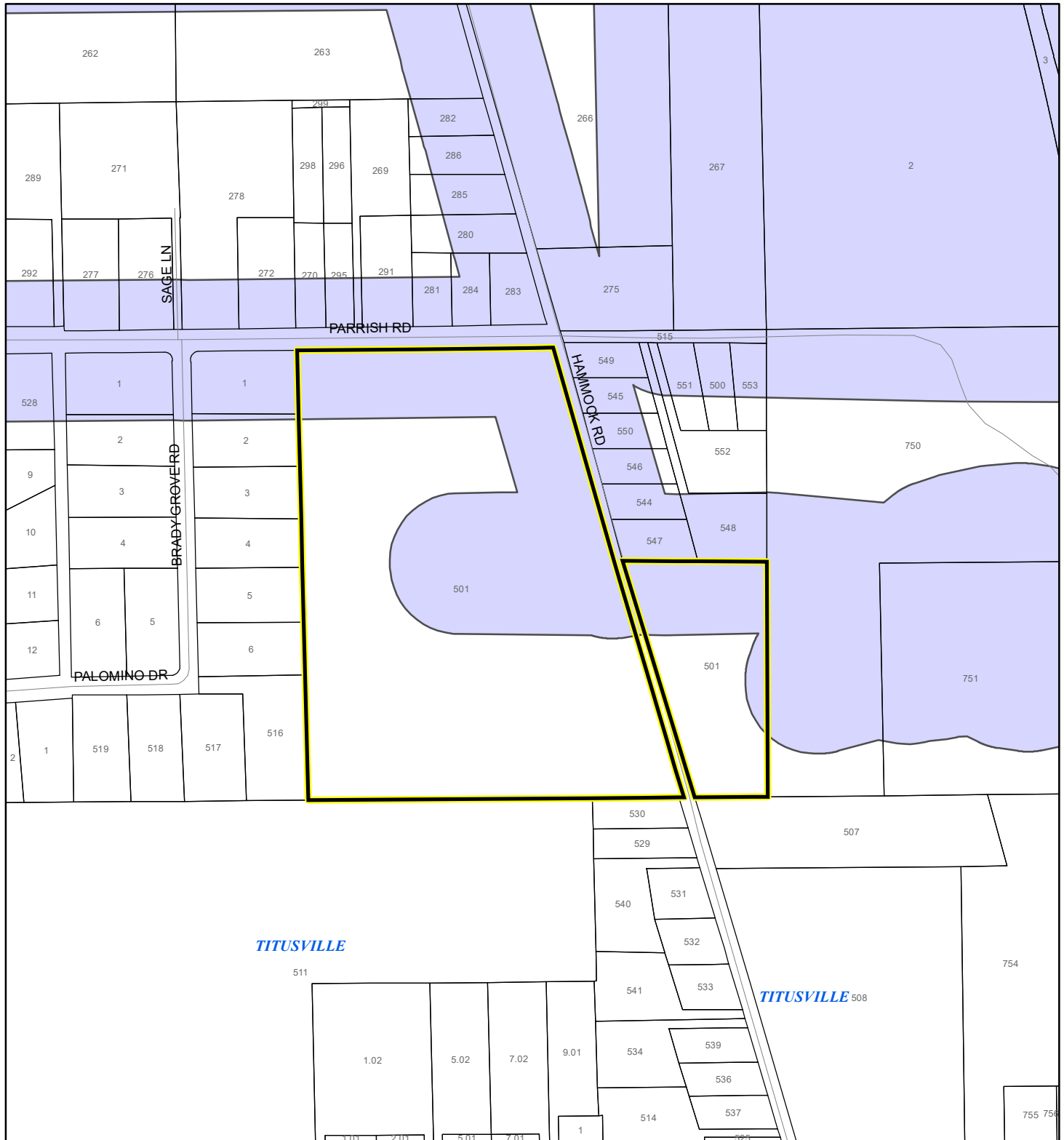
Coastal High Hazard Area

 SurgeZoneCat1

INDIAN RIVER LAGOON SEPTIC OVERLAY MAP

GOODENOW, THEODORE C.

19PZ00158



1:4,800 or 1 inch = 400 feet

This map was compiled from recorded documents and does not reflect an actual survey. The Brevard County Board of County Commissioners does not assume responsibility for errors or omissions hereon.

Produced by BoCC - GIS Date: 1/6/2020

 Subject Property

 Parcels

Septic Overlay

 40 Meters

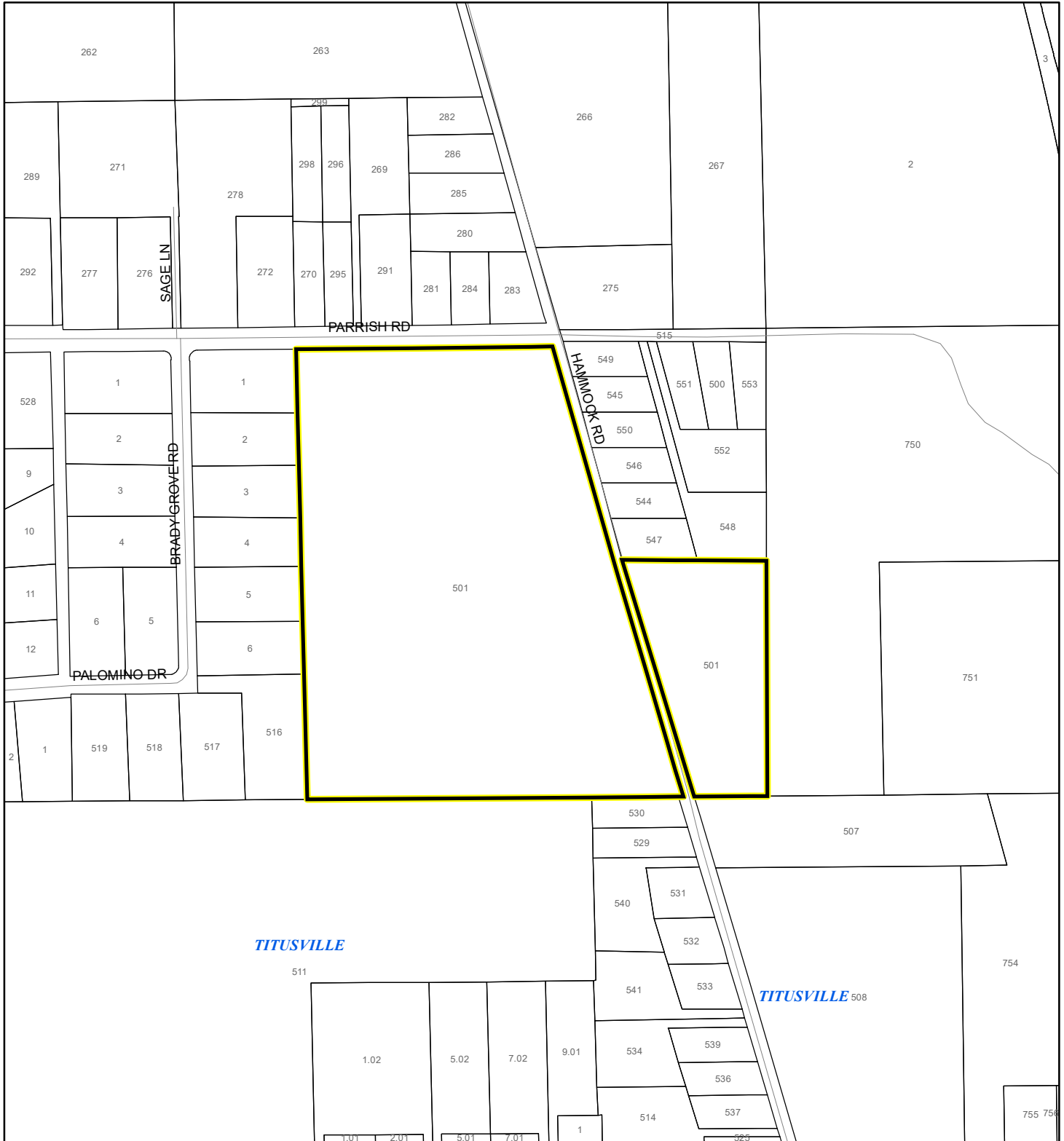
 60 Meters

 All Distances

EAGLE NESTS MAP

GOODENOW, THEODORE C.

19PZ00158



1:4,800 or 1 inch = 400 feet

This map was compiled from recorded documents and does not reflect an actual survey. The Brevard County Board of County Commissioners does not assume responsibility for errors or omissions hereon.

Produced by BoCC - GIS Date: 1/6/2020

 Subject Property

 Parcels

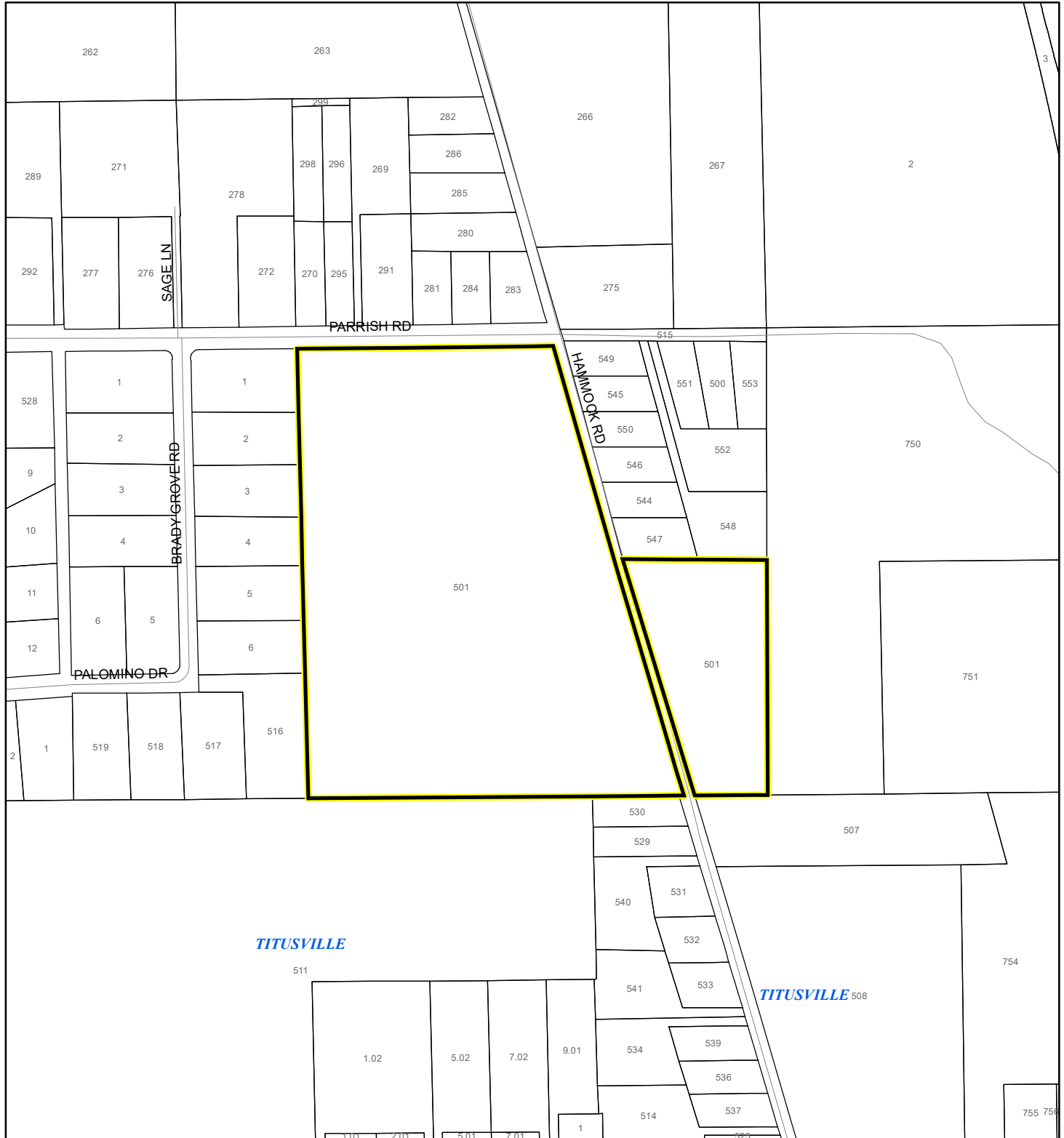


Eagle Nests
FWS 2010

SCRUB JAY OCCUPANCY MAP

GOODENOW, THEODORE C.

19PZ00158



1:4,800 or 1 inch = 400 feet

This map was compiled from recorded documents and does not reflect an actual survey. The Brevard County Board of County Commissioners does not assume responsibility for errors or omissions hereon.

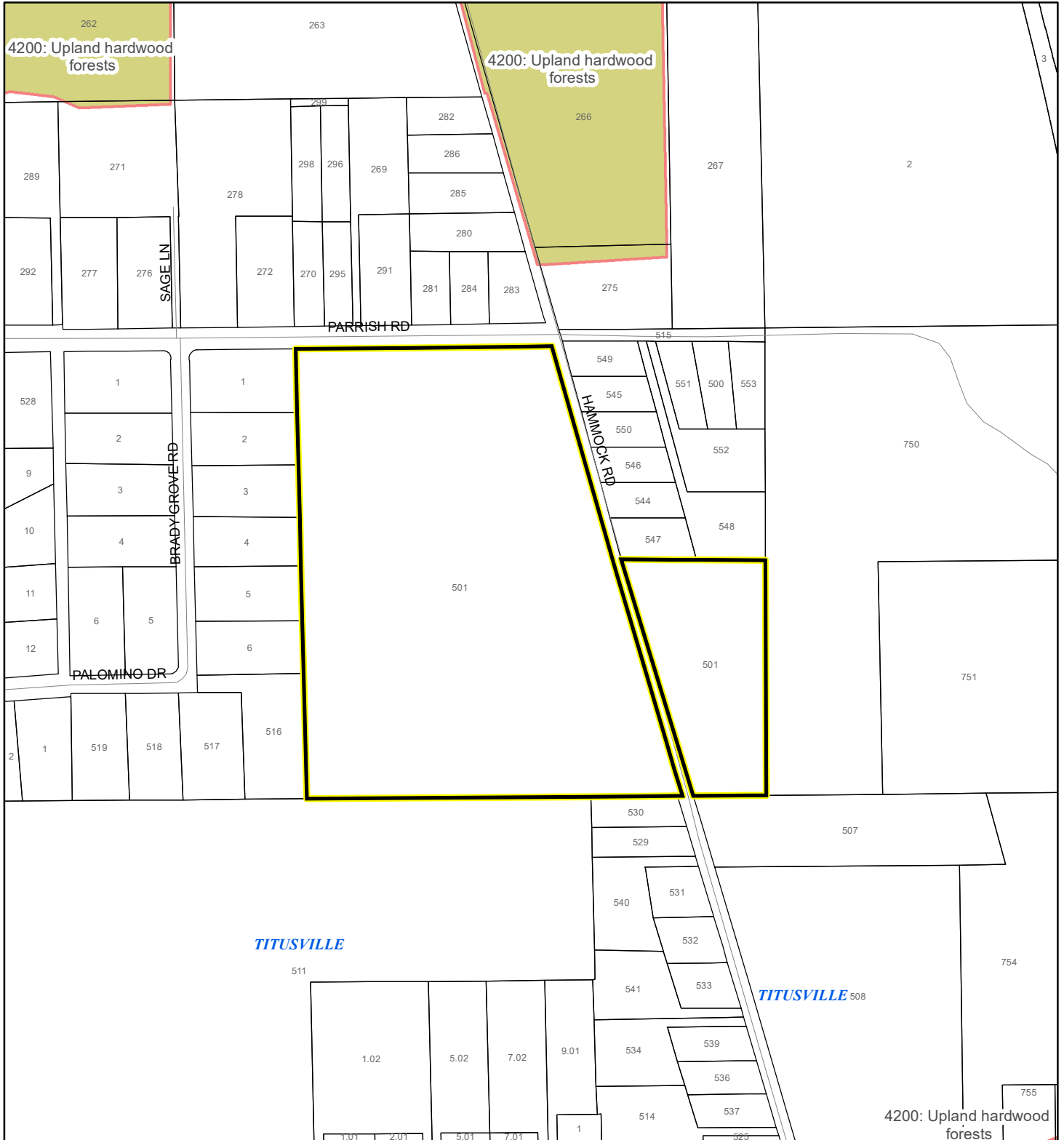
Produced by BoCC - GIS Date: 1/6/2020

- Subject Property
- Parcels
- Scrub Jay Occupancy

SJRWMD FLUCCS UPLAND FORESTS - 4000 Series MAP

GOODENOW, THEODORE C.

19PZ00158







1:4,800 or 1 inch = 400 feet

This map was compiled from recorded documents and does not reflect an actual survey. The Brevard County Board of County Commissioners does not assume responsibility for errors or omissions hereon.

Produced by BoCC - GIS Date: 1/6/2020

SJRWMD FLUCCS Upland Forests

-  Upland Coniferous Forest - 4100 Series
-  Upland Hardwood Forest - 4200 Series
-  Upland Mixed Forest - 4300 Series
-  Tree Plantations - 4400 Series

 Subject Property
 Parcels