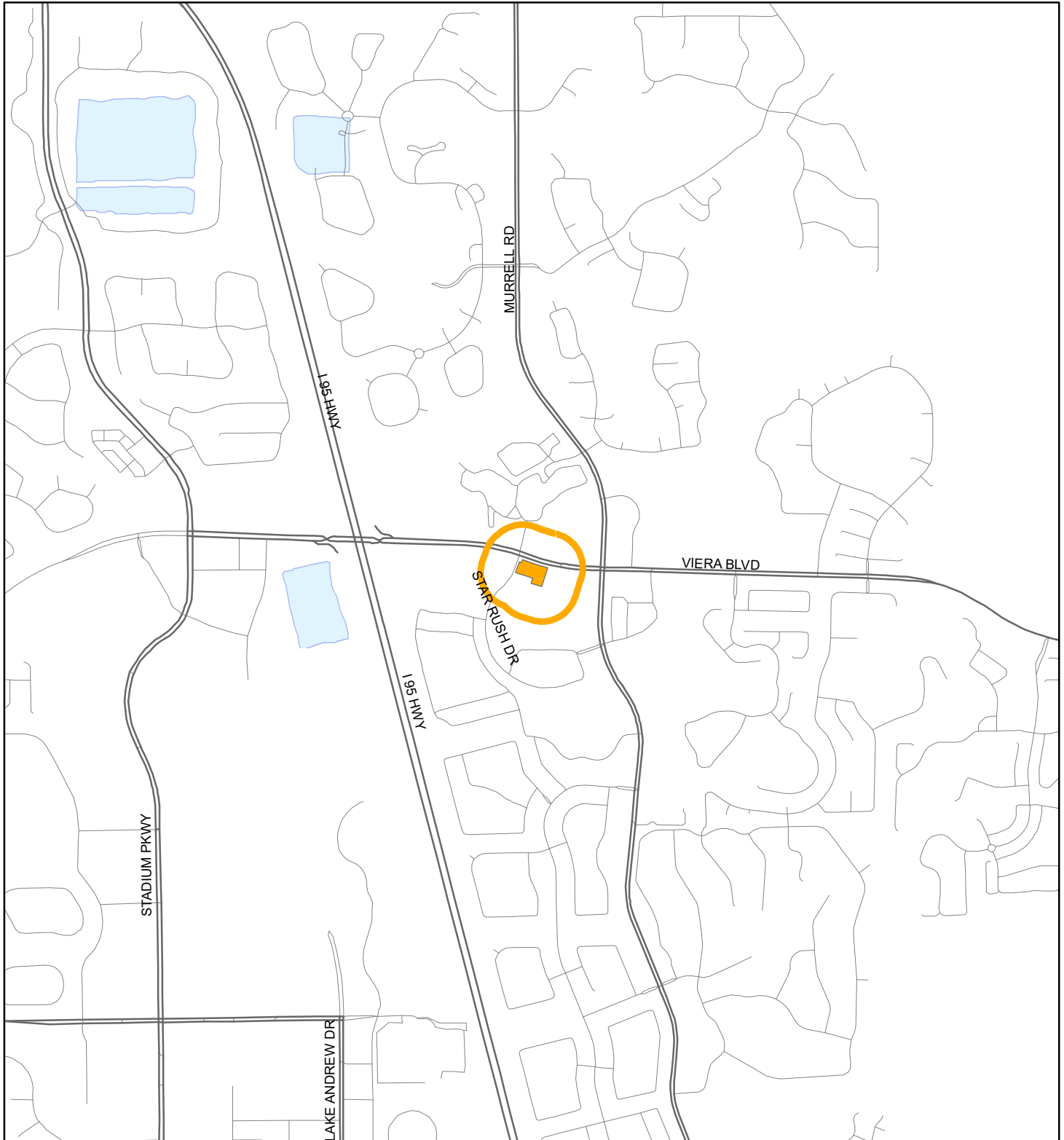


LOCATION MAP

ROUNABOUT PARTNERS, LLC

20Z00002





1:24,000 or 1 inch = 2,000 feet

Buffer Distance: 500 feet

This map was compiled from recorded documents and does not reflect an actual survey. The Brevard County Board of County Commissioners does not assume responsibility for errors or omissions hereon.

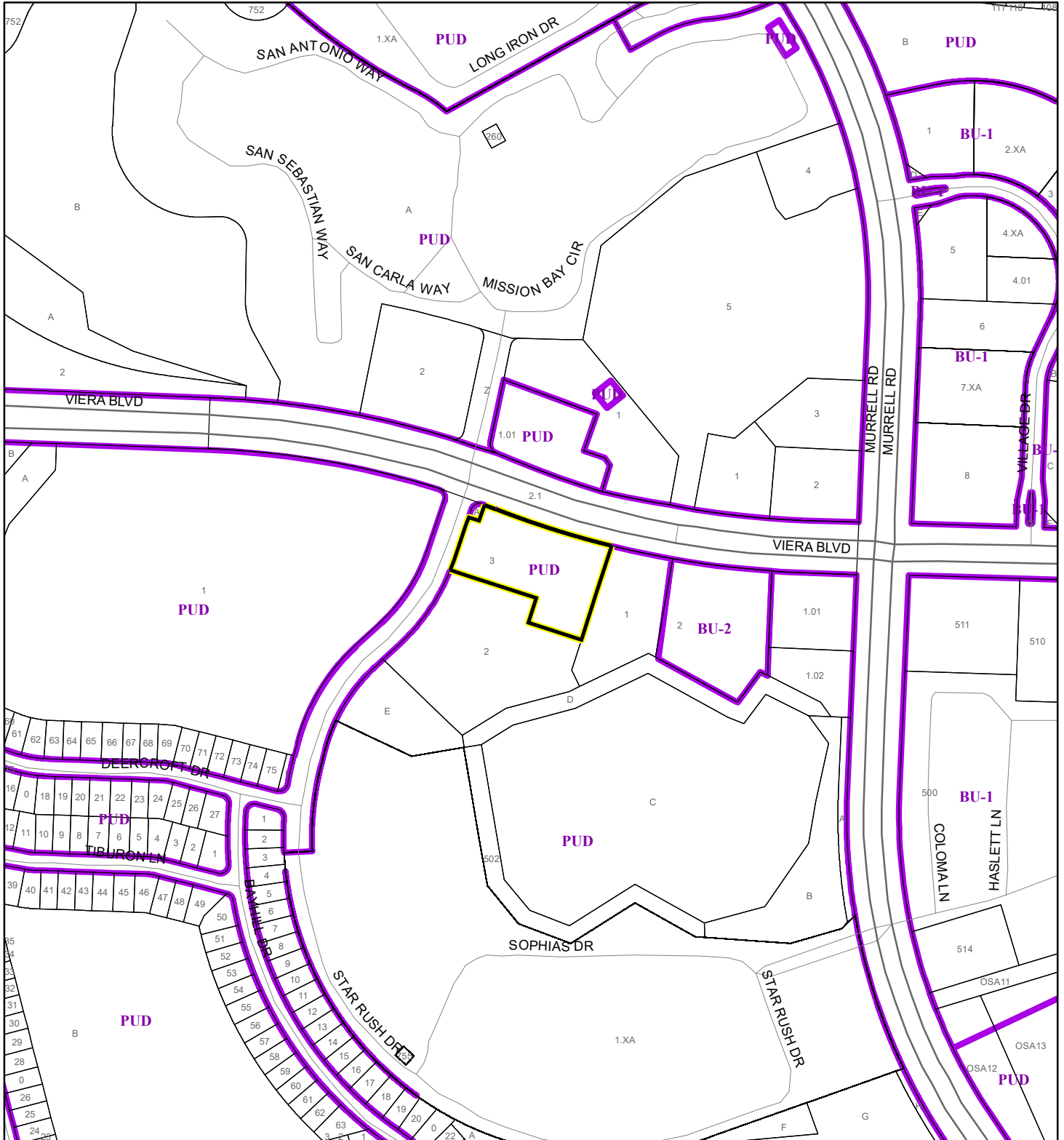
Produced by BoCC - GIS Date: 4/16/2020

 Buffer
 Subject Property

ZONING MAP

ROUNDAABOUT PARTNERS, LLC


20Z00002



1:4,800 or 1 inch = 400 feet

This map was compiled from recorded documents and does not reflect an actual survey. The Brevard County Board of County Commissioners does not assume responsibility for errors or omissions hereon.

Produced by BoCC - GIS Date: 4/16/2020

 Subject Property

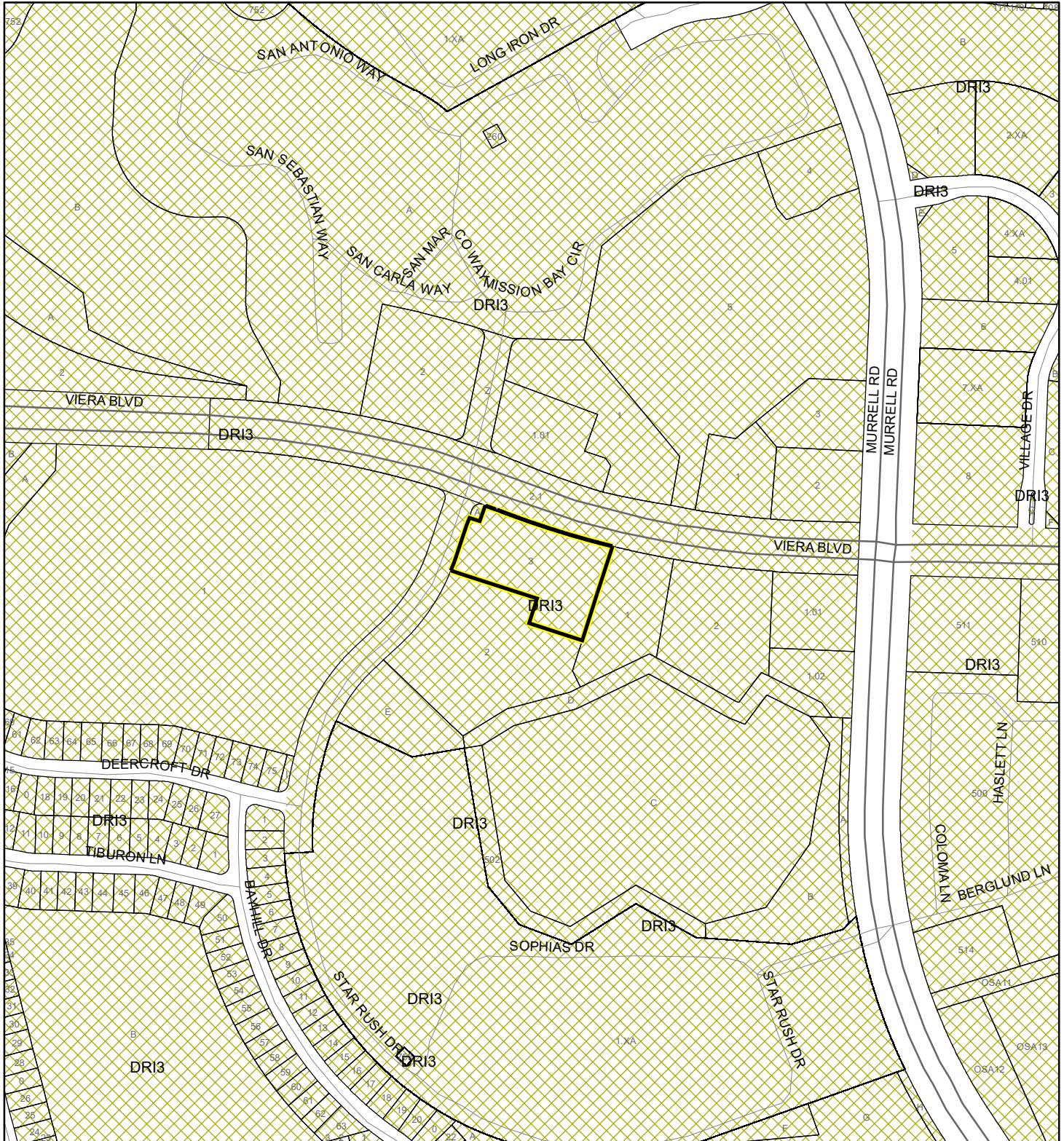
 Parcels

 Zoning



FUTURE LAND USE MAP

ROUNDAABOUT PARTNERS, LLC

20Z00002



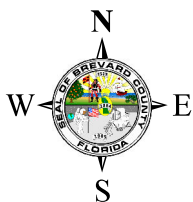
1:4,800 or 1 inch = 400 feet

 Subject Property
 Parcels

This map was compiled from recorded documents and does not reflect an actual survey. The Brevard County Board of County Commissioners does not assume responsibility for errors or omissions hereon.

Produced by BoCC - GIS Date: 4/16/2020

AERIAL MAP
ROUNABOUT PARTNERS, LLC
20Z00002





1:4,800 or 1 inch = 400 feet

PHOTO YEAR: 2019

This map was compiled from recorded documents and does not reflect an actual survey. The Brevard County Board of County Commissioners does not assume responsibility for errors or omissions hereon.

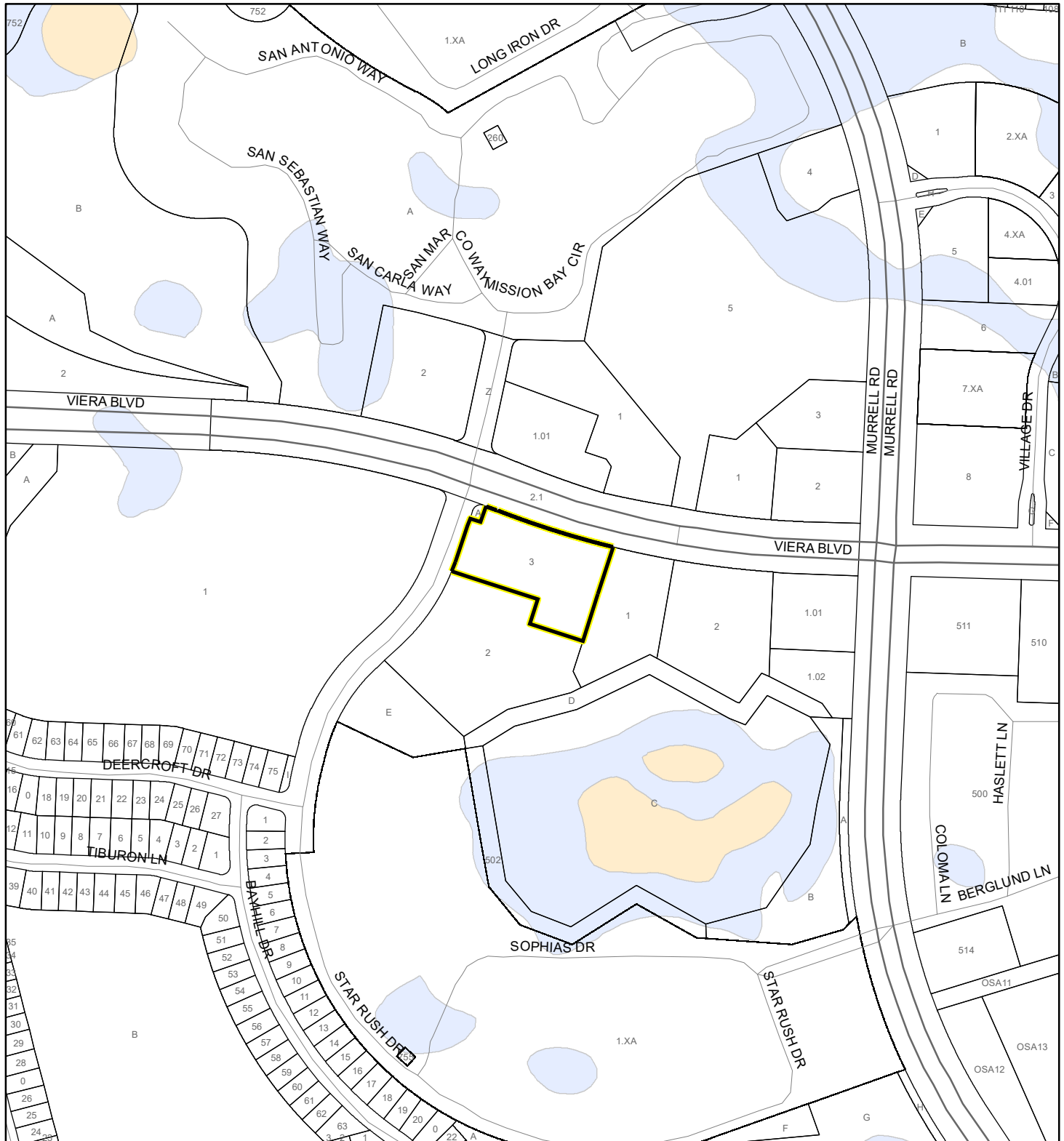
Produced by BoCC - GIS Date: 4/16/2020

 Subject Property
 Parcels

NWI WETLANDS MAP

ROUNDAABOUT PARTNERS, LLC

20Z00002



1:4,800 or 1 inch = 400 feet

This map was compiled from recorded documents and does not reflect an actual survey. The Brevard County Board of County Commissioners does not assume responsibility for errors or omissions hereon.

Produced by BoCC - GIS Date: 4/16/2020

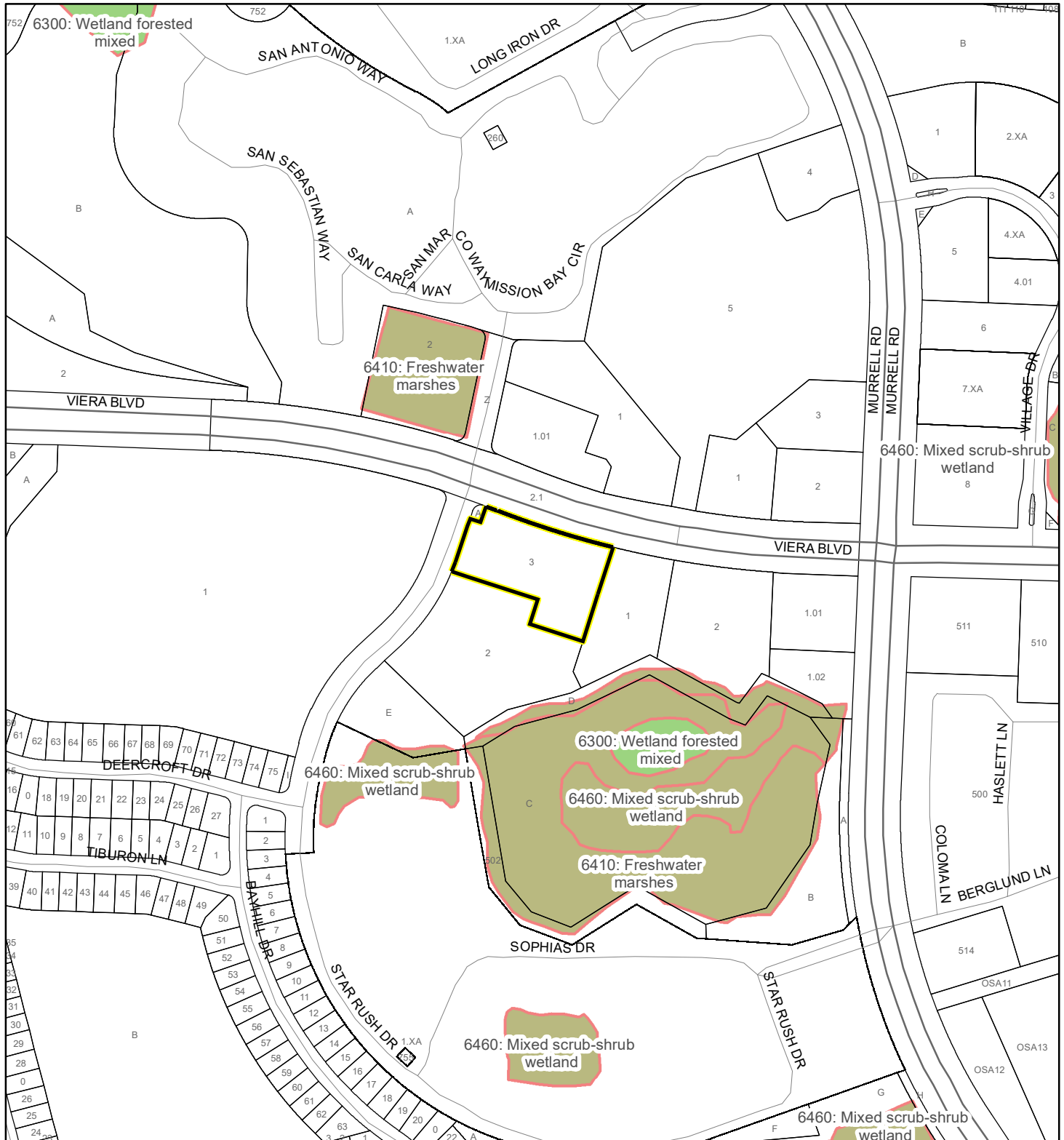
National Wetlands Inventory (NWI)

Estuarine and Marine Deepwater	Freshwater Pond
Estuarine and Marine Wetland	Lake
Freshwater Emergent Wetland	Other
Freshwater Forested/Shrub Wetland	Riverine
Subject Property	Parcels

SJRWMD FLUCCS WETLANDS - 6000 Series MAP

ROUNDAABOUT PARTNERS, LLC

20Z00002



1:4,800 or 1 inch = 400 feet

This map was compiled from recorded documents and does not reflect an actual survey. The Brevard County Board of County Commissioners does not assume responsibility for errors or omissions hereon.

Produced by BoCC - GIS Date: 4/16/2020

SJRWMD FLUCCS WETLANDS

- Wetland Hardwood Forests - Series 6100
- Wetland Coniferous Forest - Series 6200
- Wetland Forested Mixed - Series 6300
- Vegetated Non-Forested Wetlands - Series 6400
- Non-Vegetated Wetland - Series 6500

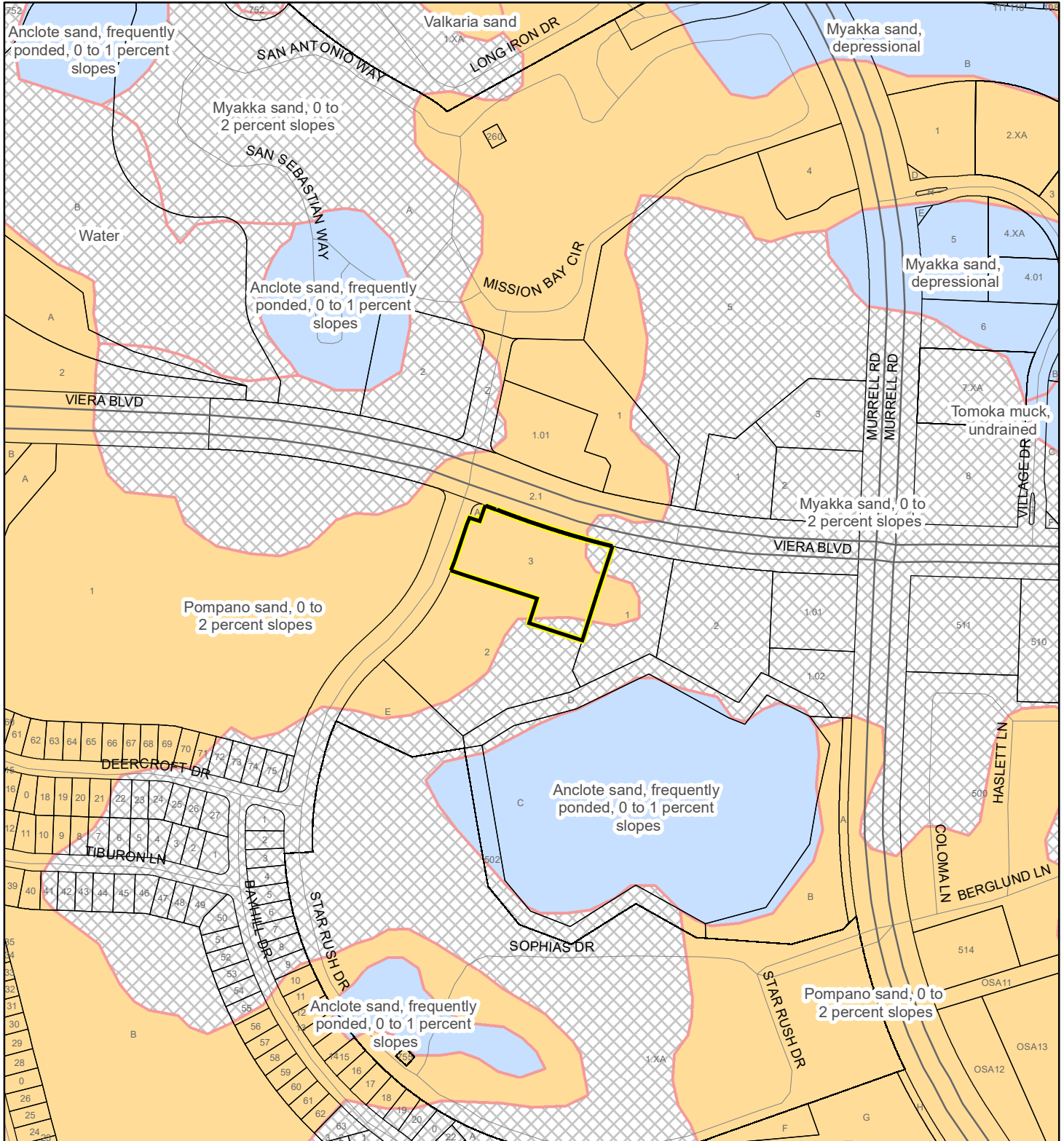
Subject Property

Parcels

USDA SCSSS SOILS MAP

ROUNABOUT PARTNERS, LLC

20Z00002



1:4,800 or 1 inch = 400 feet

This map was compiled from recorded documents and does not reflect an actual survey. The Brevard County Board of County Commissioners does not assume responsibility for errors or omissions hereon.

Produced by BoCC - GIS Date: 4/16/2020

USDA SCSSS Soils

- Aquifer and Hydric
- Aquifer
- Hydric
- None

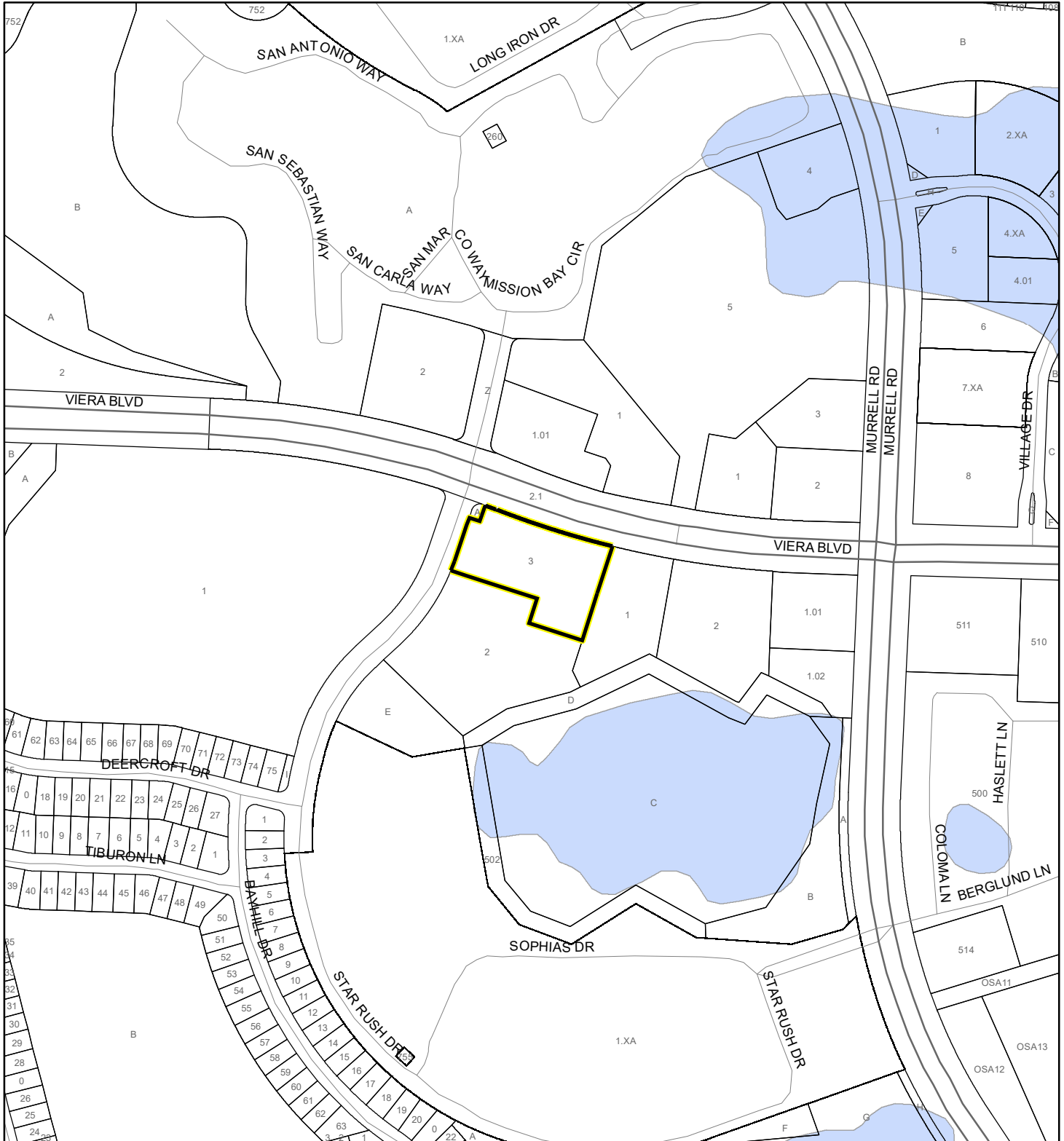
Subject Property

Parcels

FEMA FLOOD ZONES MAP

ROUNDAABOUT PARTNERS, LLC

20Z00002



1:4,800 or 1 inch = 400 feet

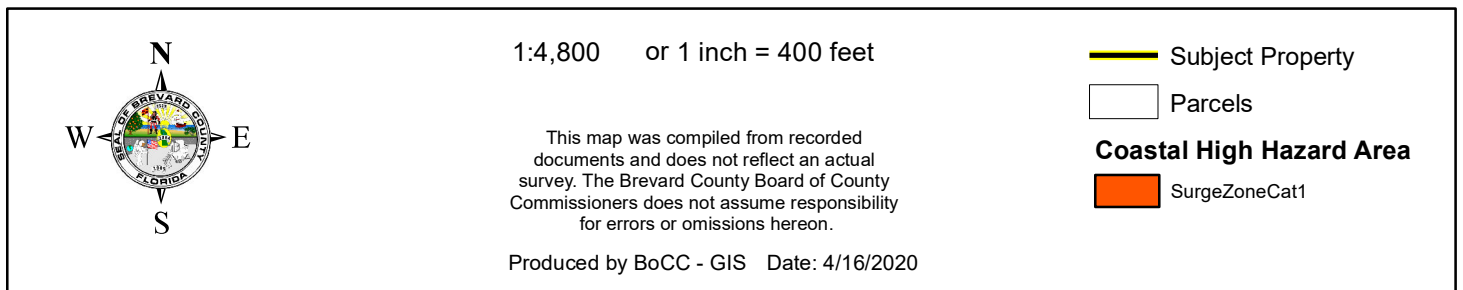
This map was compiled from recorded documents and does not reflect an actual survey. The Brevard County Board of County Commissioners does not assume responsibility for errors or omissions hereon.

Produced by BoCC - GIS Date: 4/16/2020

FEMA Flood Zones

A	AO	X
AE	Open Water	X Protected By Levee
AH	VE	
0.2 Percent Annual Chance Flood Hazard		
0.2 Percent Annual Chance Flood Hazard Contained in Channel		
Subject Property		Parcels

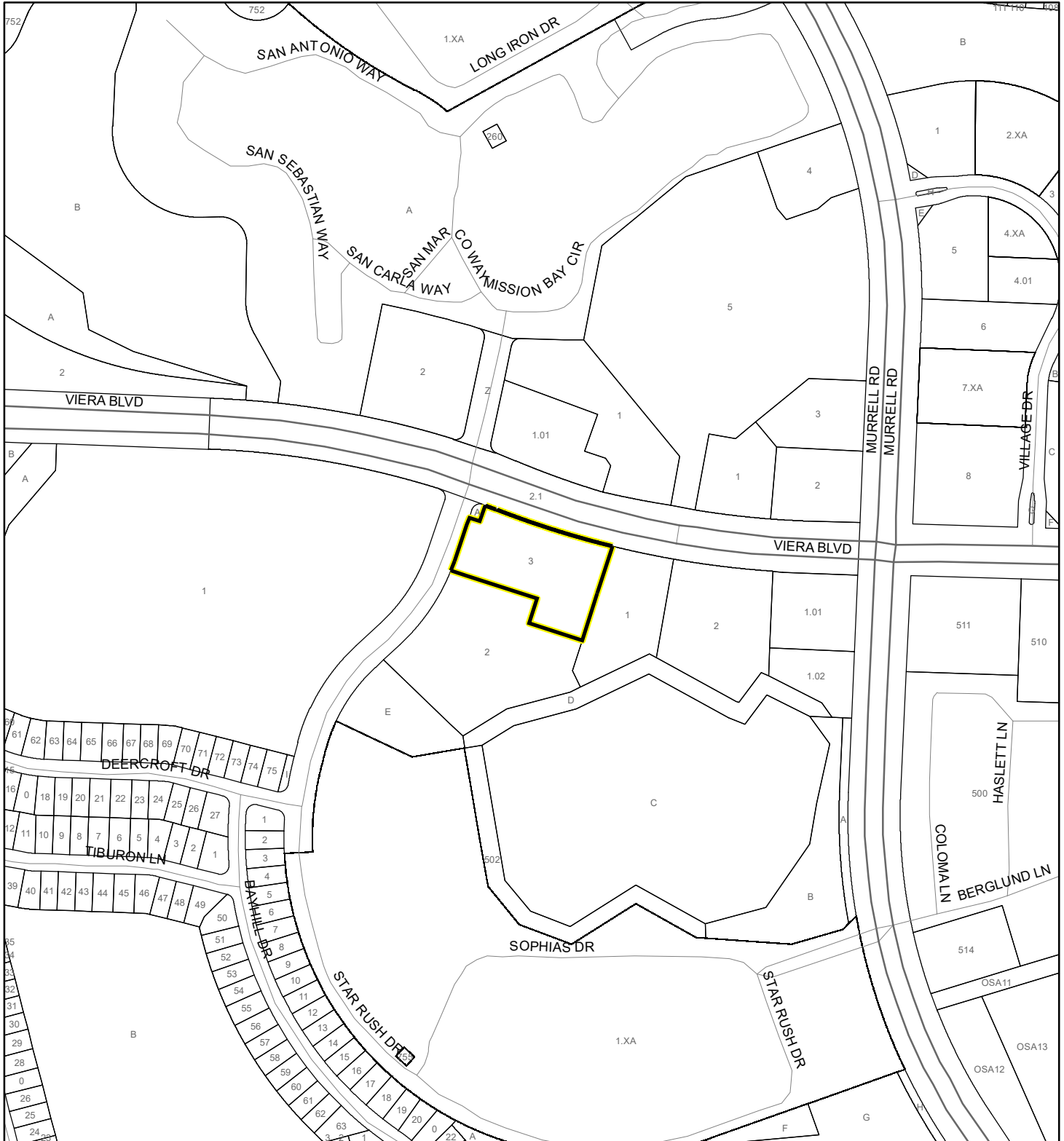
20Z00002



INDIAN RIVER LAGOON SEPTIC OVERLAY MAP

ROUNDAABOUT PARTNERS, LLC

20Z00002



1:4,800 or 1 inch = 400 feet

This map was compiled from recorded documents and does not reflect an actual survey. The Brevard County Board of County Commissioners does not assume responsibility for errors or omissions hereon.

Produced by BoCC - GIS Date: 4/16/2020

 Subject Property

 Parcels

Septic Overlay

40 Meters

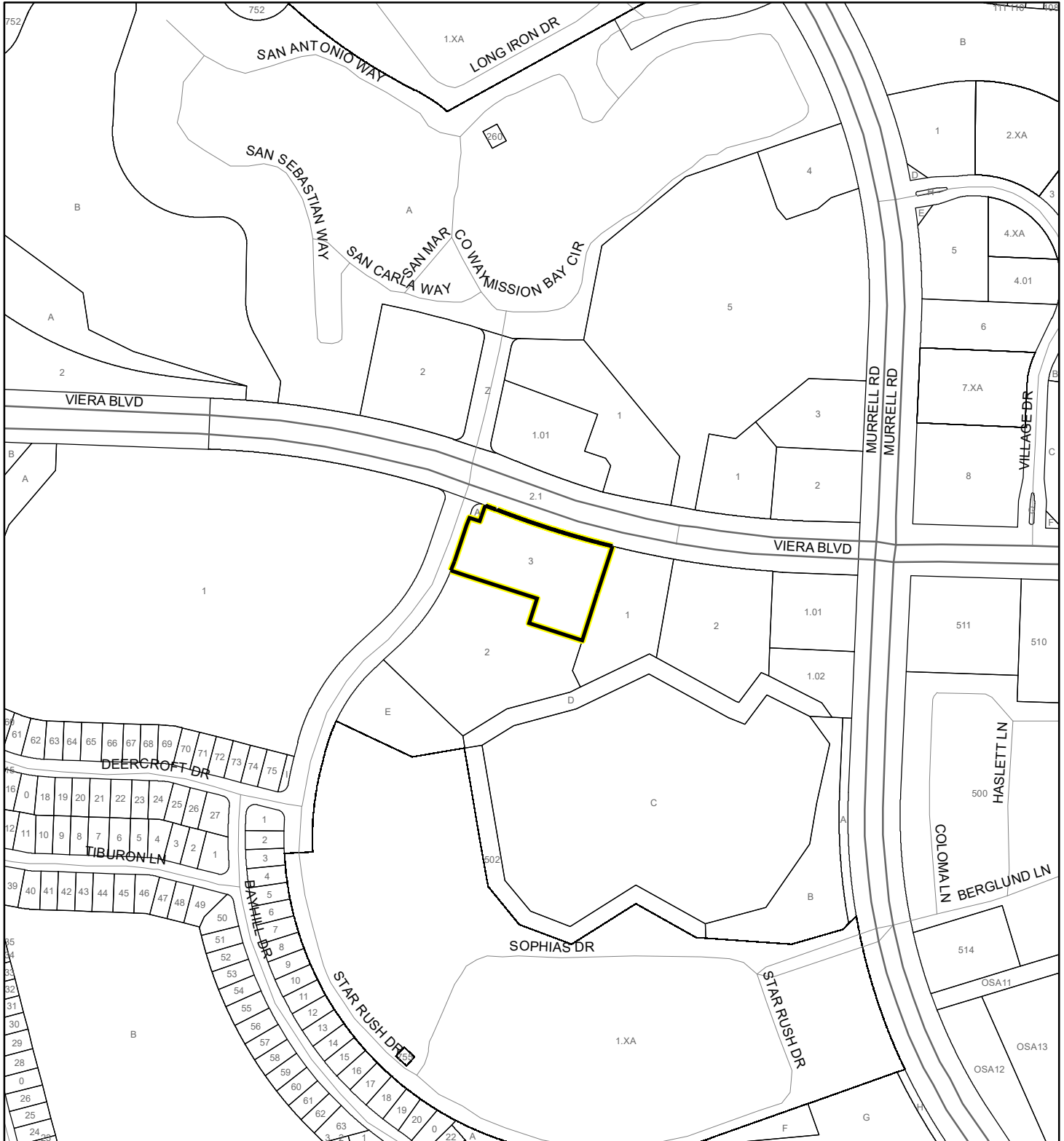
60 Meters

All Distances

EAGLE NESTS MAP

ROUNDAABOUT PARTNERS, LLC

20Z00002



1:4,800 or 1 inch = 400 feet

This map was compiled from recorded documents and does not reflect an actual survey. The Brevard County Board of County Commissioners does not assume responsibility for errors or omissions hereon.

Produced by BoCC - GIS Date: 4/16/2020

 Subject Property

 Parcels

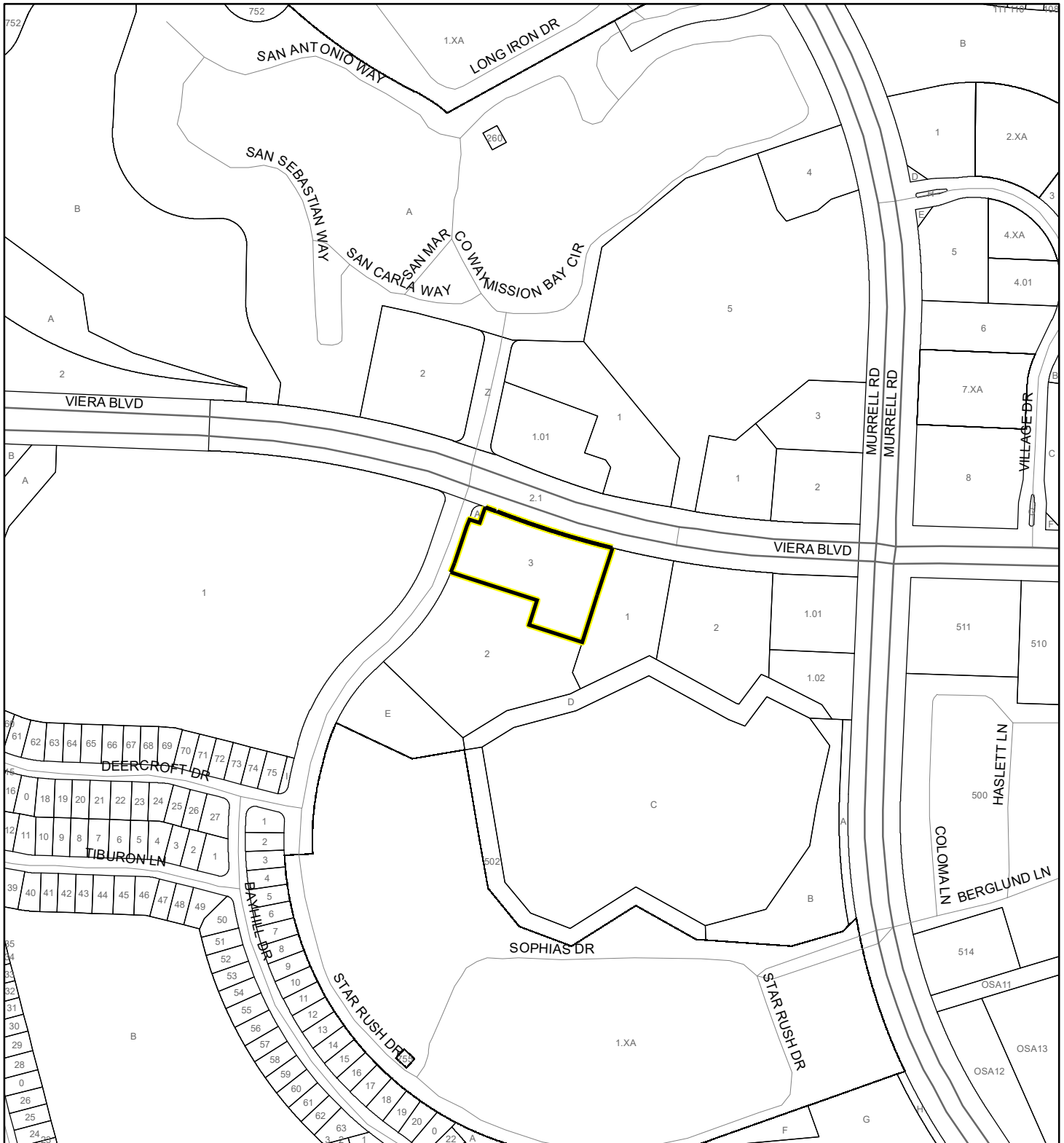


Eagle Nests
FWS 2010

SCRUB JAY OCCUPANCY MAP

ROUNDAABOUT PARTNERS, LLC




20Z00002



1:4,800 or 1 inch = 400 feet

This map was compiled from recorded documents and does not reflect an actual survey. The Brevard County Board of County Commissioners does not assume responsibility for errors or omissions hereon.

Produced by BoCC - GIS Date: 4/16/2020

-  Subject Property
-  Parcels
-  Scrub Jay Occupancy

 Subject Property Parcels