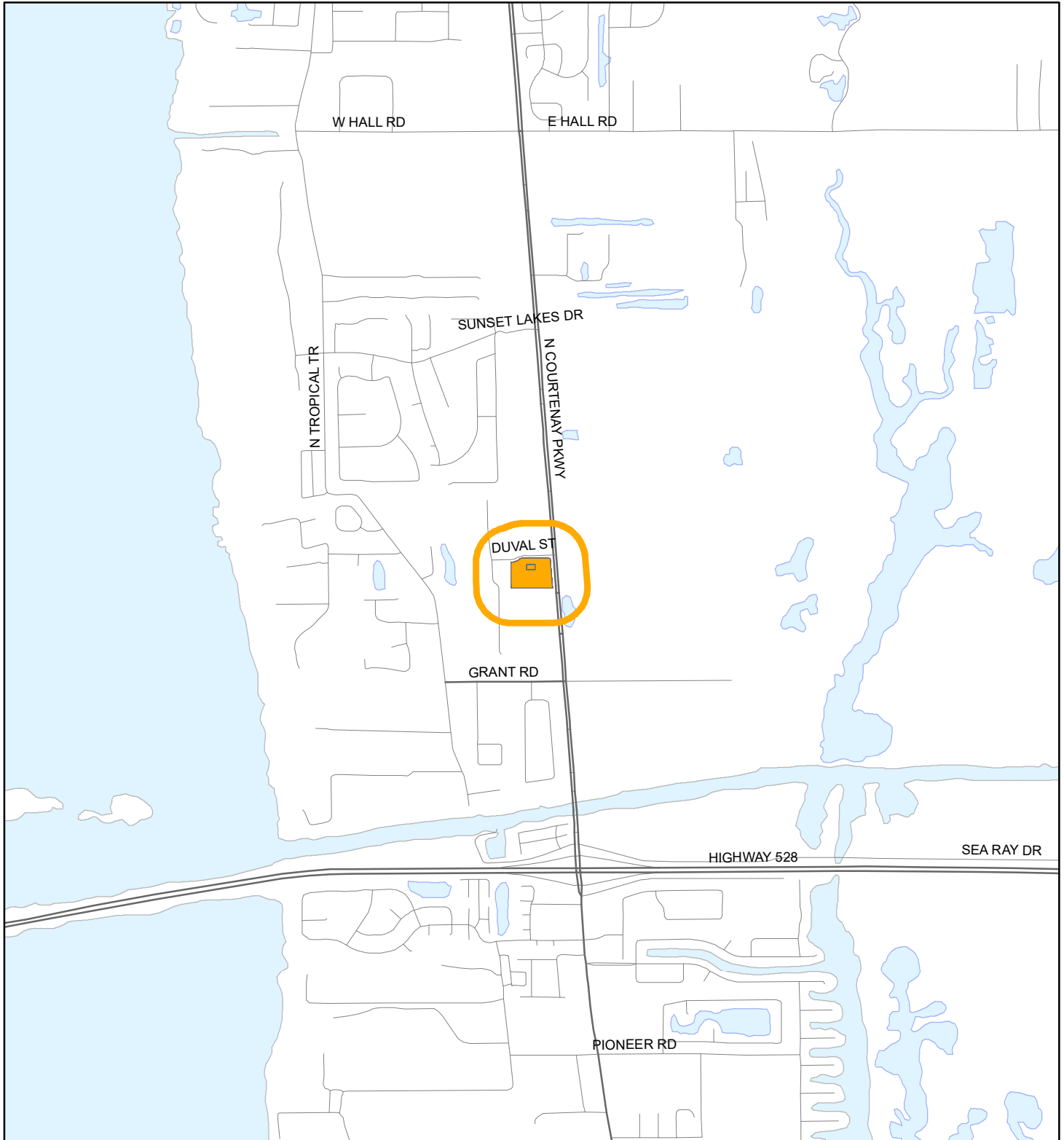


# LOCATION MAP

MI PLAZA GROUP, LLC  
20PZ00027





1:24,000 or 1 inch = 2,000 feet

Buffer Distance: 500 feet

This map was compiled from recorded documents and does not reflect an actual survey. The Brevard County Board of County Commissioners does not assume responsibility for errors or omissions hereon.

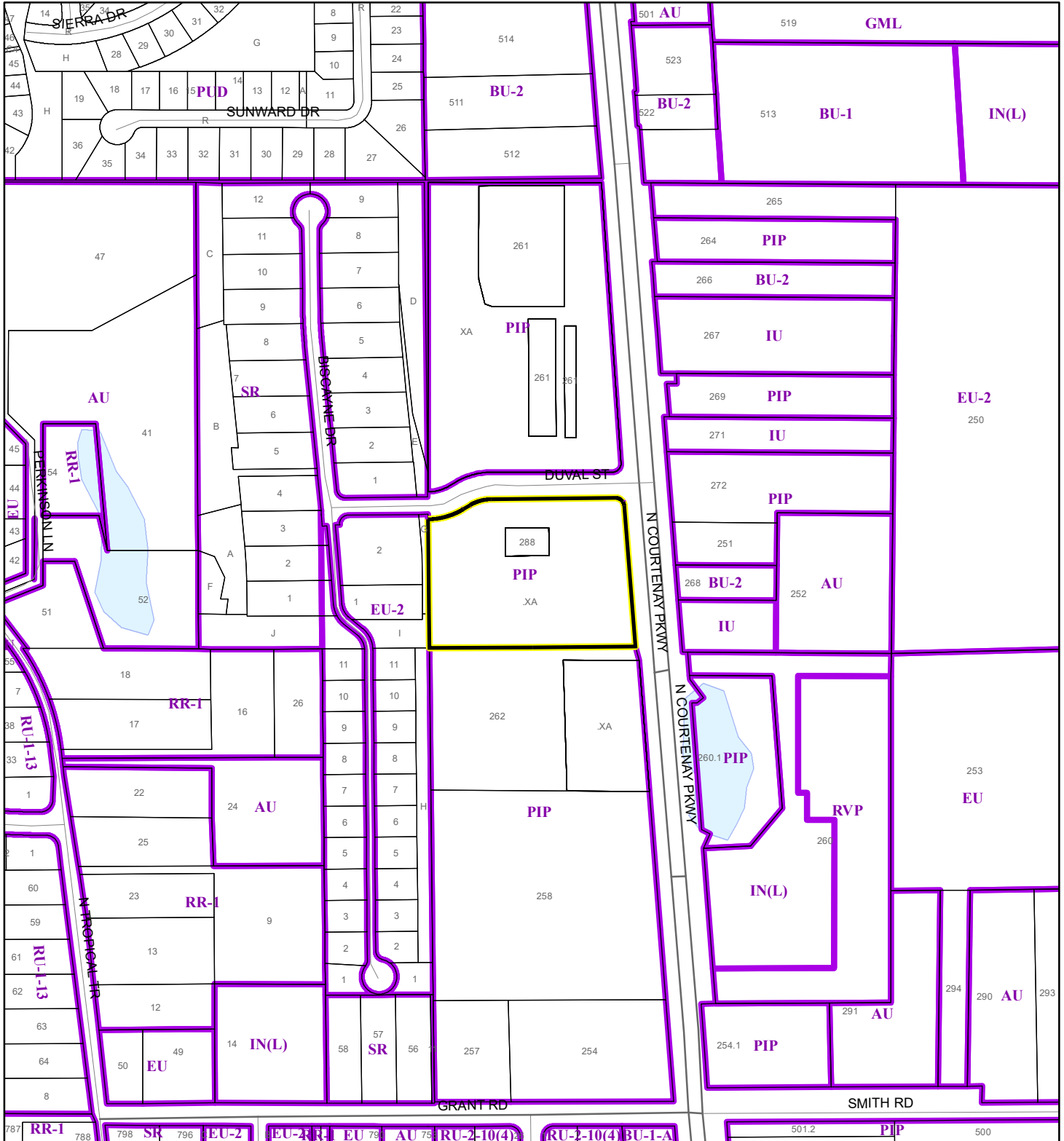
Produced by BoCC - GIS Date: 3/12/2020

 Buffer  
 Subject Property

# ZONING MAP

MI PLAZA GROUP, LLC

20PZ00027



1:4,800 or 1 inch = 400 feet

This map was compiled from recorded documents and does not reflect an actual survey. The Brevard County Board of County Commissioners does not assume responsibility for errors or omissions hereon.

Produced by BoCC - GIS Date: 3/12/2020

Subject Property

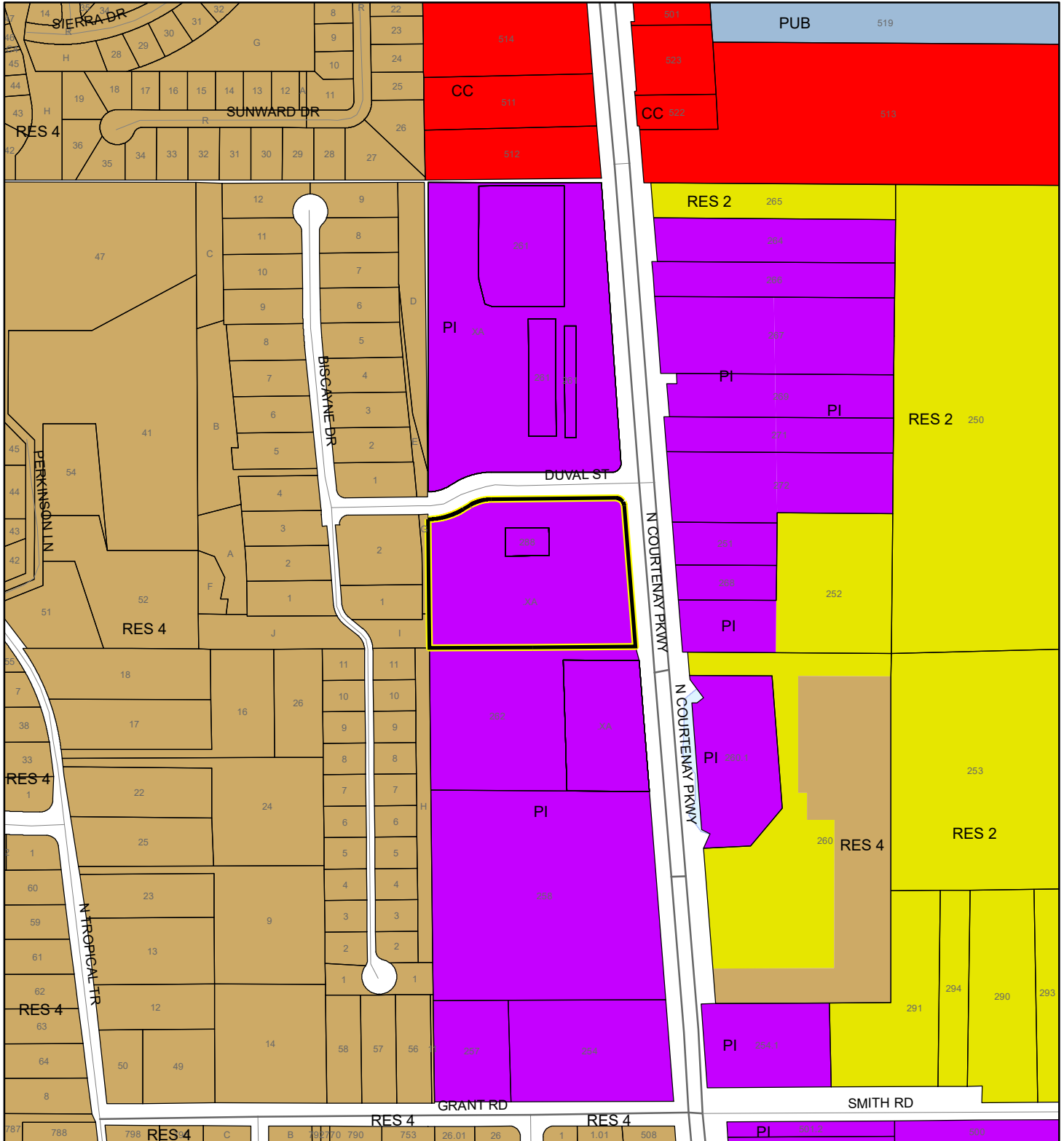
Parcels

Zoning

# FUTURE LAND USE MAP

MI PLAZA GROUP, LLC

20PZ00027



1:4,800 or 1 inch = 400 feet

**Subject Property**  
**Parcels**

This map was compiled from recorded documents and does not reflect an actual survey. The Brevard County Board of County Commissioners does not assume responsibility for errors or omissions hereon.

Produced by BoCC - GIS Date: 3/12/2020



# AERIAL MAP

MI PLAZA GROUP, LLC

20PZ00027





1:2,400 or 1 inch = 200 feet

PHOTO YEAR: 2019

This map was compiled from recorded documents and does not reflect an actual survey. The Brevard County Board of County Commissioners does not assume responsibility for errors or omissions hereon.

Produced by BoCC - GIS Date: 3/12/2020

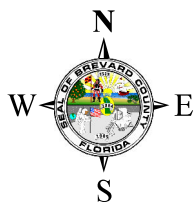
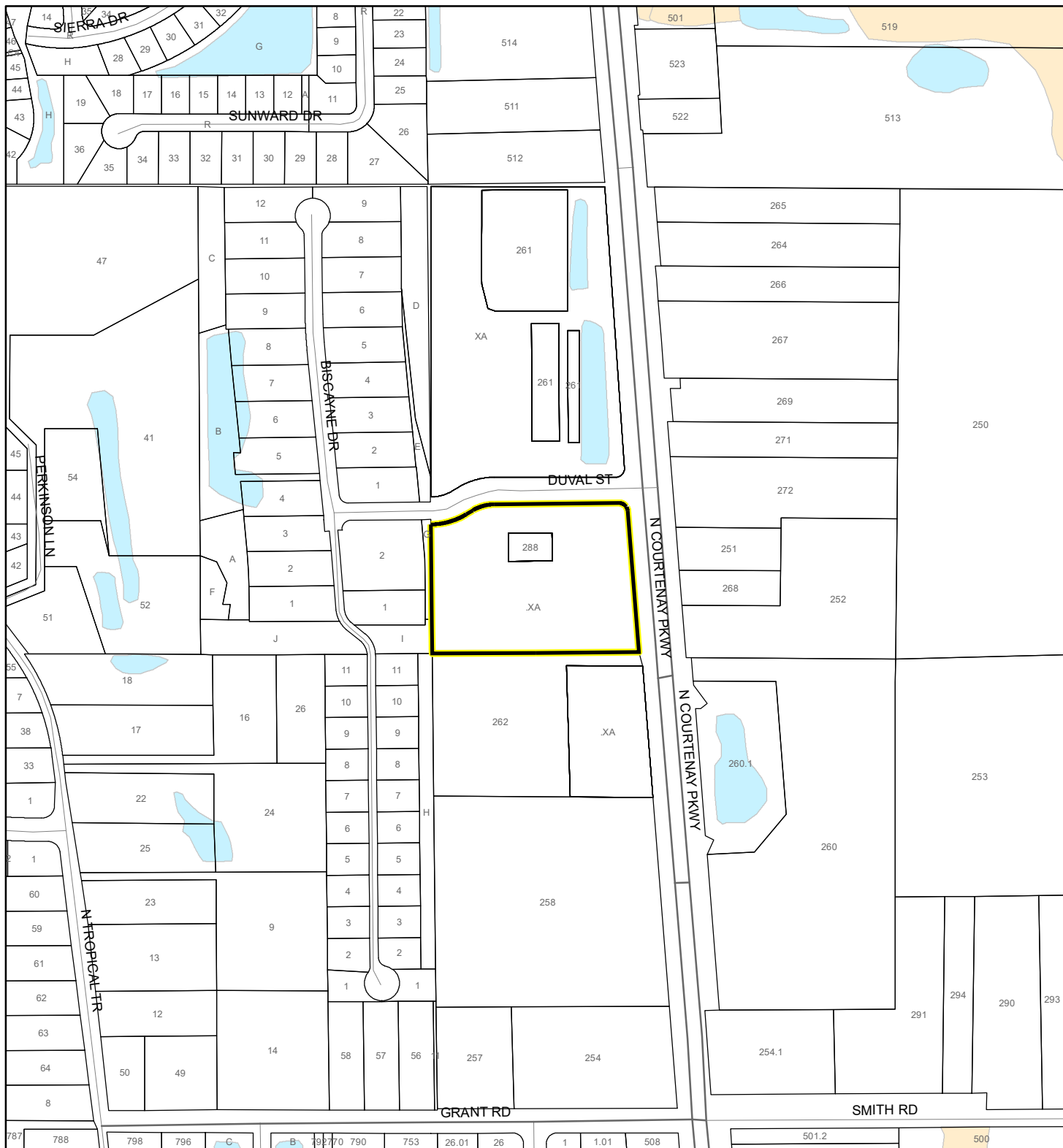
 Subject Property  
 Parcels



# NWI WETLANDS MAP

MI PLAZA GROUP, LLC

20PZ00027



1:4,800 or 1 inch = 400 feet

This map was compiled from recorded documents and does not reflect an actual survey. The Brevard County Board of County Commissioners does not assume responsibility for errors or omissions hereon.

Produced by BoCC - GIS Date: 3/12/2020

## National Wetlands Inventory (NWI)

Estuarine and Marine Deepwater	Freshwater Pond
Estuarine and Marine Wetland	Lake
Freshwater Emergent Wetland	Other
Freshwater Forested/Shrub Wetland	Riverine
Subject Property	
Parcels	

# SJRWMD FLUCCS WETLANDS - 6000 Series MAP

MI PLAZA GROUP, LLC

20PZ00027



1:4,800 or 1 inch = 400 feet

This map was compiled from recorded documents and does not reflect an actual survey. The Brevard County Board of County Commissioners does not assume responsibility for errors or omissions hereon.

Produced by BoCC - GIS Date: 3/12/2020

## SJRWMD FLUCCS WETLANDS

- Wetland Hardwood Forests - Series 6100
- Wetland Coniferous Forest - Series 6200
- Wetland Forested Mixed - Series 6300
- Vegetated Non-Forested Wetlands - Series 6400
- Non-Vegetated Wetland - Series 6500

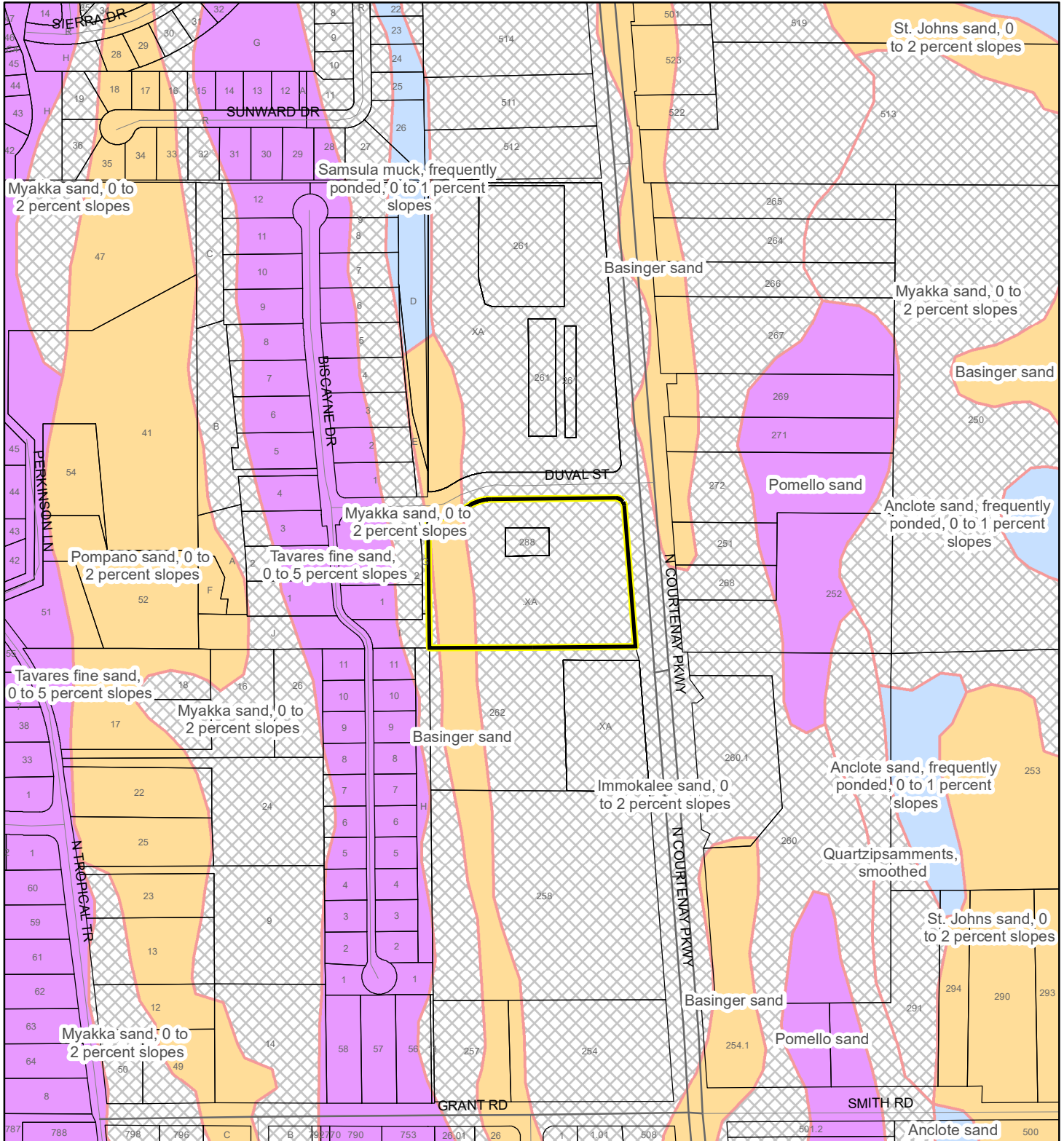
Subject Property

Parcels

# USDA SCSSS SOILS MAP

MI PLAZA GROUP, LLC

20PZ00027



1:4,800 or 1 inch = 400 feet

This map was compiled from recorded documents and does not reflect an actual survey. The Brevard County Board of County Commissioners does not assume responsibility for errors or omissions hereon.

Produced by BoCC - GIS Date: 3/12/2020

## USDA SCSSS Soils

- Aquifer and Hydric
- Aquifer
- Hydric
- None

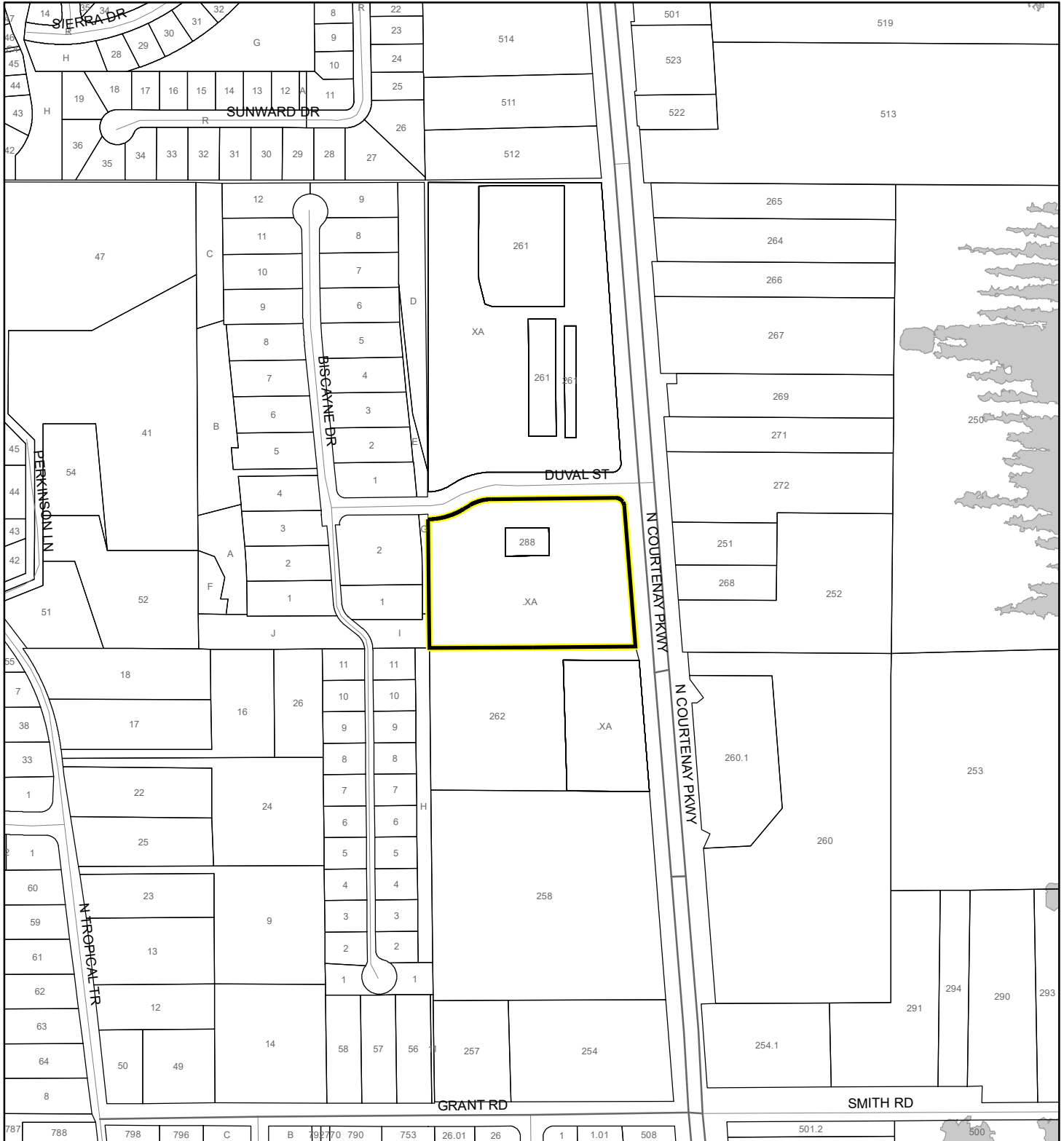
Subject Property

Parcels

# FEMA FLOOD ZONES MAP

MI PLAZA GROUP, LLC

20PZ00027



1:4,800 or 1 inch = 400 feet

This map was compiled from recorded documents and does not reflect an actual survey. The Brevard County Board of County Commissioners does not assume responsibility for errors or omissions hereon.

Produced by BoCC - GIS Date: 3/12/2020

## FEMA Flood Zones

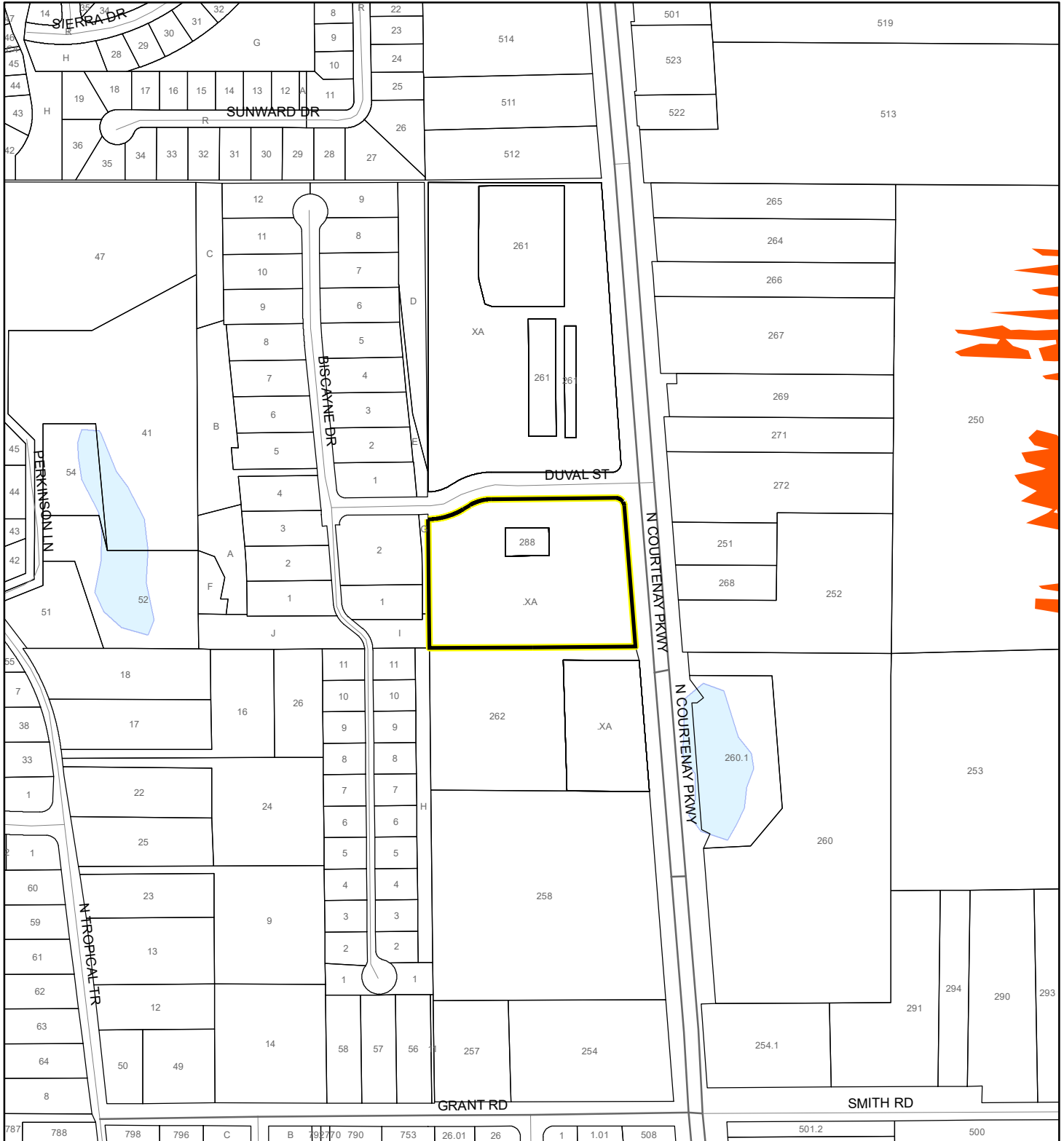
- |   |            |                      |
|---|------------|----------------------|
| A   | AO         | X                    |
| AE  | Open Water | X Protected By Levee |
| AH  | VE         |                      |
| 0.2 Percent Annual Chance Flood Hazard                      |            |                      |
| 0.2 Percent Annual Chance Flood Hazard Contained in Channel |            |                      |
| Subject Property  |            | Parcels              |



# COASTAL HIGH HAZARD AREA MAP

MI PLAZA GROUP, LLC

20PZ00027



1:4,800 or 1 inch = 400 feet


This map was compiled from recorded documents and does not reflect an actual survey. The Brevard County Board of County Commissioners does not assume responsibility for errors or omissions hereon.

Produced by BoCC - GIS Date: 3/12/2020

 Subject Property

 Parcels

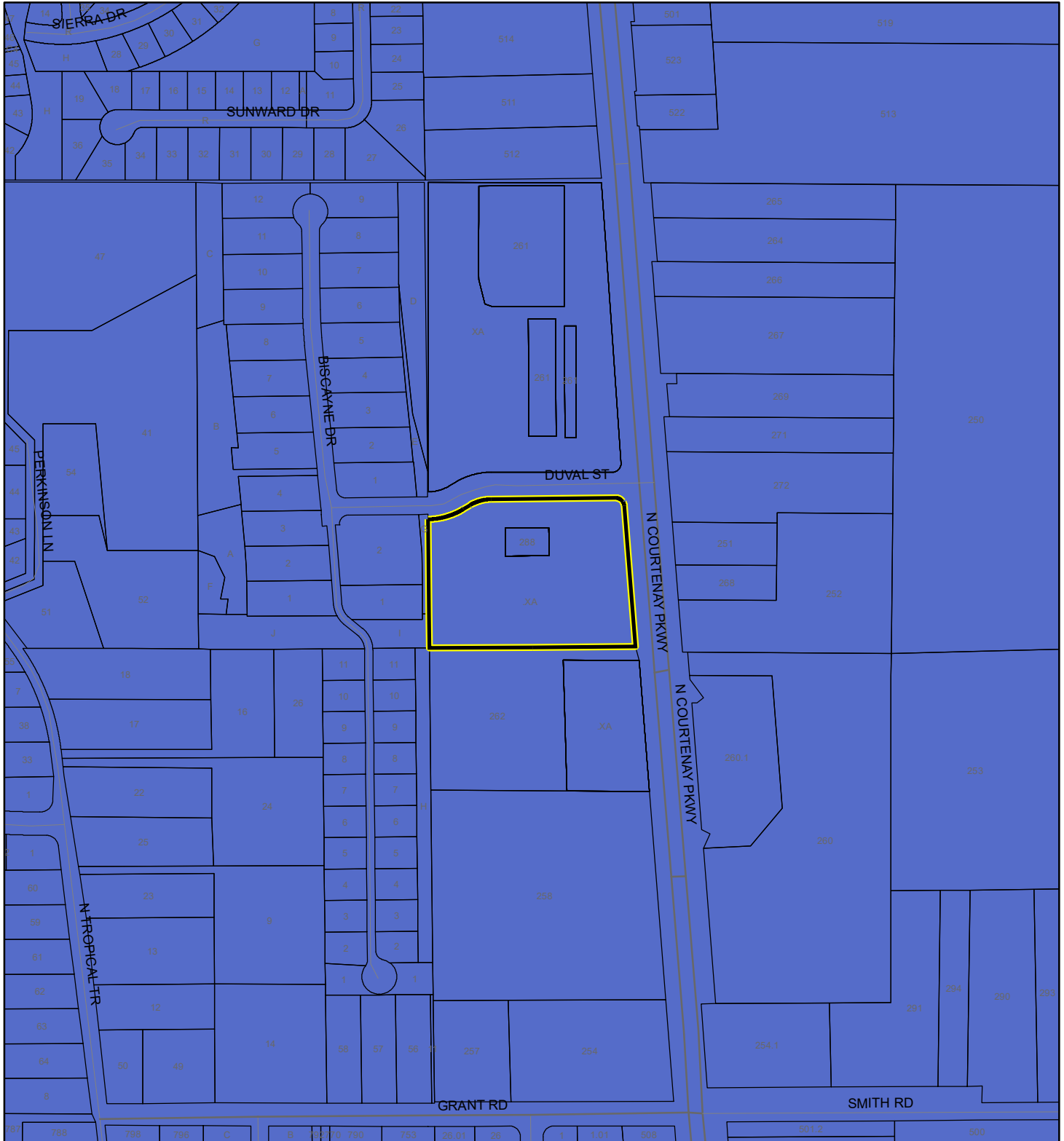
**Coastal High Hazard Area**

 SurgeZoneCat1

# INDIAN RIVER LAGOON SEPTIC OVERLAY MAP

MI PLAZA GROUP, LLC

20PZ00027



1:4,800 or 1 inch = 400 feet

This map was compiled from recorded documents and does not reflect an actual survey. The Brevard County Board of County Commissioners does not assume responsibility for errors or omissions hereon.

Produced by BoCC - GIS Date: 3/12/2020

 Subject Property

 Parcels

**Septic Overlay**

 40 Meters

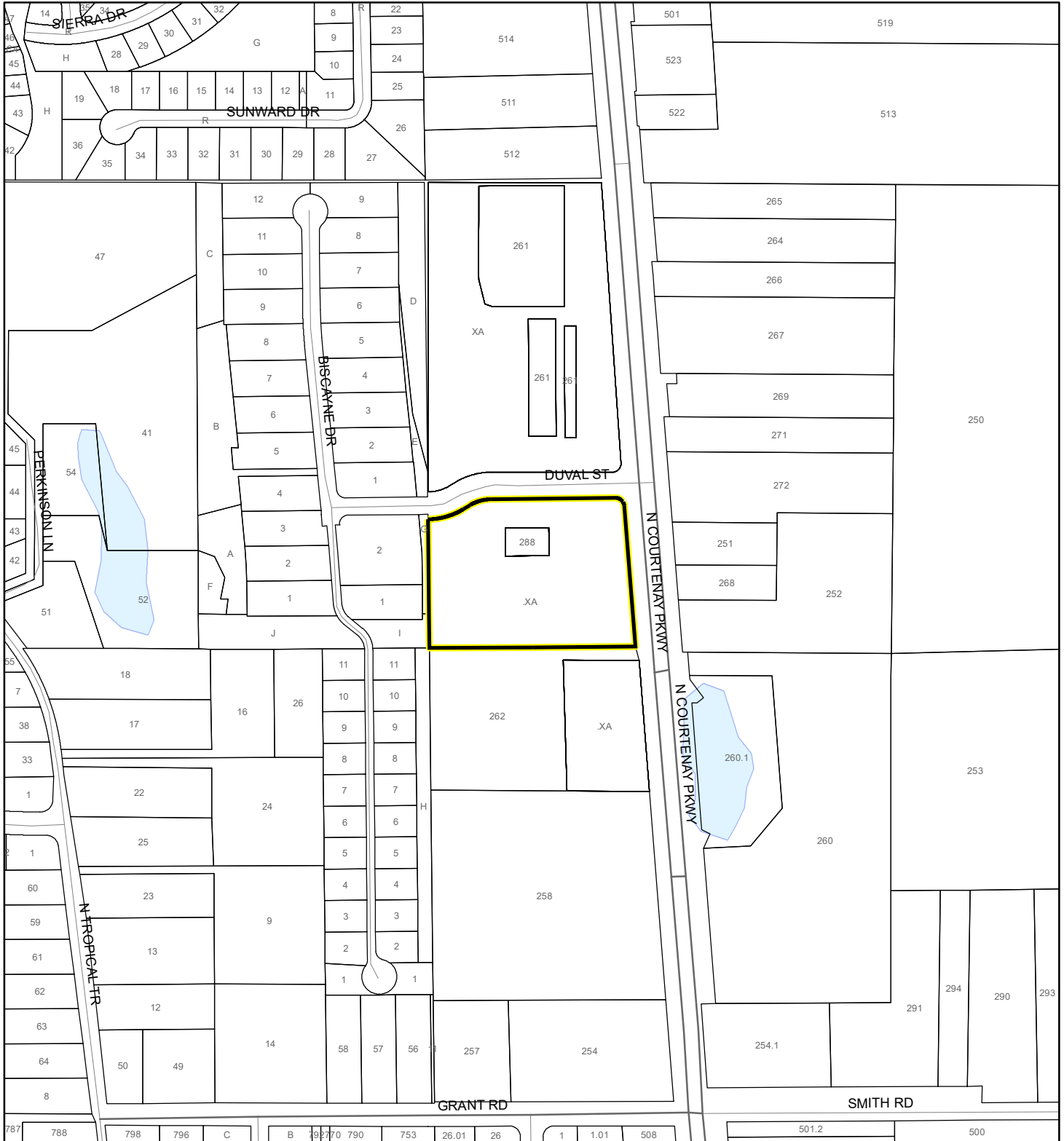
 60 Meters

 All Distances

# EAGLE NESTS MAP

MI PLAZA GROUP, LLC

20PZ00027



1:4,800 or 1 inch = 400 feet

This map was compiled from recorded documents and does not reflect an actual survey. The Brevard County Board of County Commissioners does not assume responsibility for errors or omissions hereon.

Produced by BoCC - GIS Date: 3/12/2020

 Subject Property

 Parcels



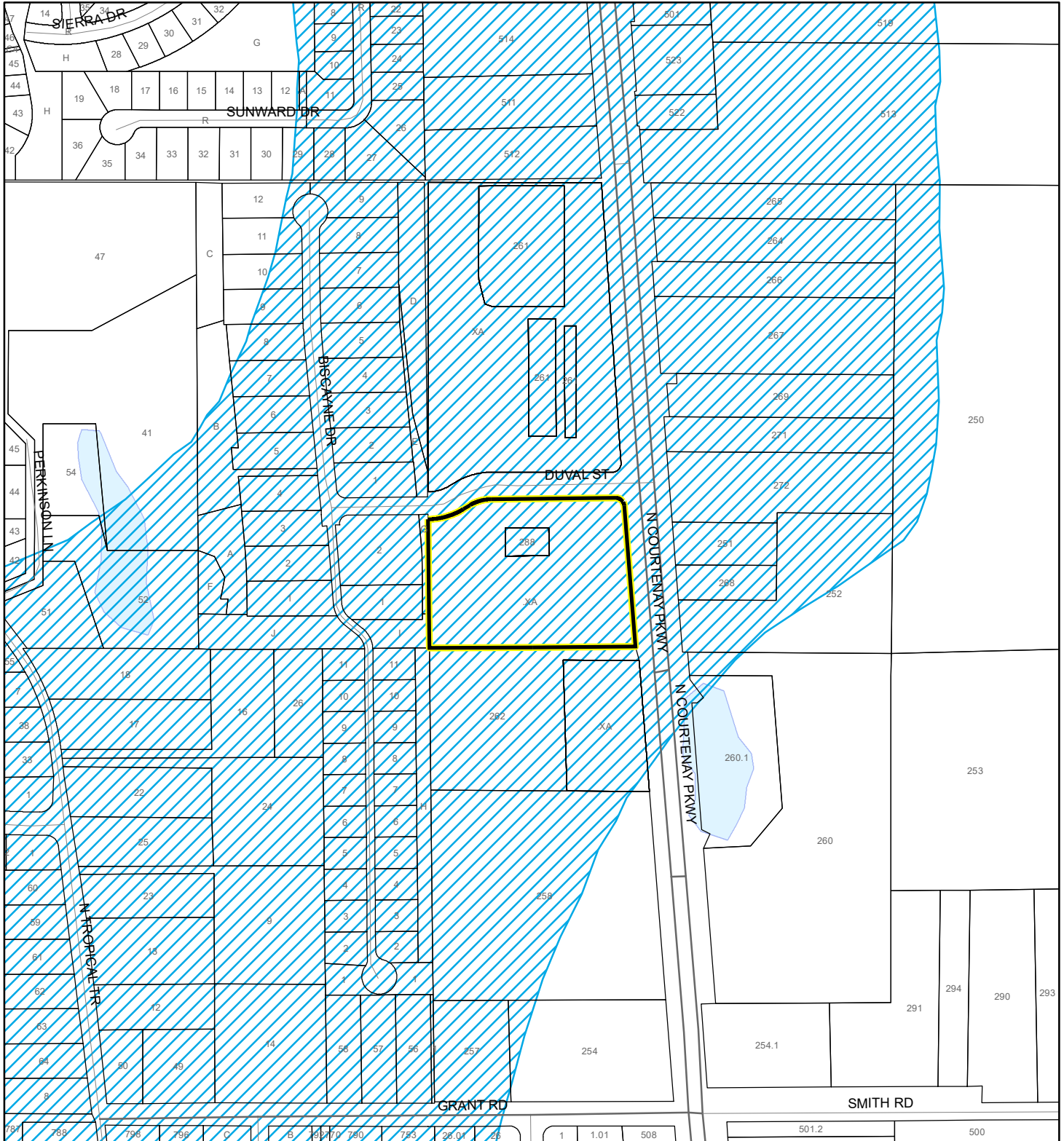
Eagle Nests  
FWS 2010



# SCRUB JAY OCCUPANCY MAP

MI PLAZA GROUP, LLC

20PZ00027



1:4,800 or 1 inch = 400 feet

This map was compiled from recorded documents and does not reflect an actual survey. The Brevard County Board of County Commissioners does not assume responsibility for errors or omissions hereon.

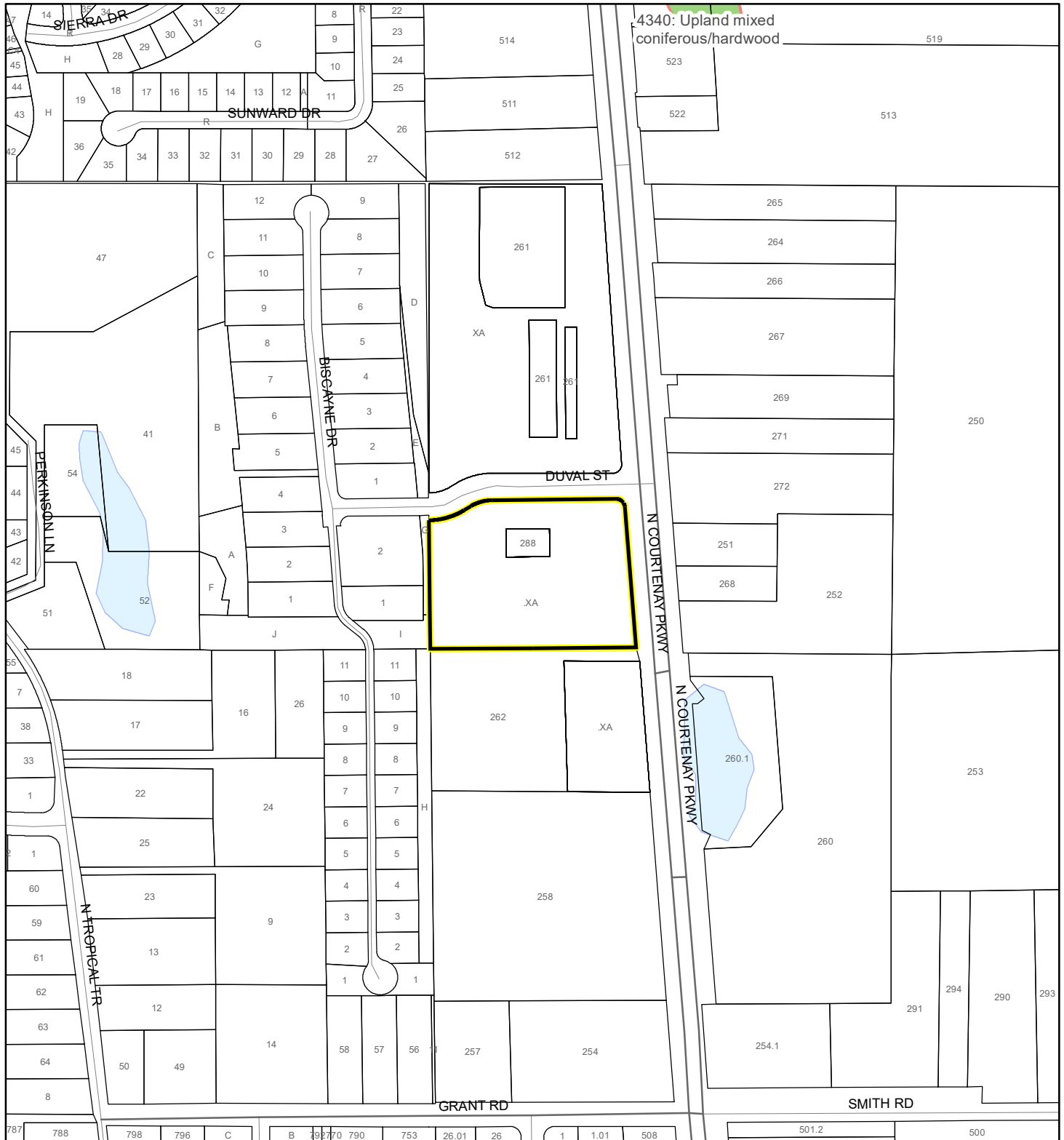
Produced by BoCC - GIS Date: 3/12/2020

- Subject Property
- Parcels
- Scrub Jay Occupancy

# SJRWMD FLUCCS UPLAND FORESTS - 4000 Series MAP

MI PLAZA GROUP, LLC

20PZ00027



4340: Upland mixed  
coniferous/hardwood

519

523

522

513

514

511

512

261

XA

261

261

DUVAL ST

288

.XA

N COURTEENAY PKWY

N COURTEENAY PKWY

260.1

250

251

268

252

253

260

291

294

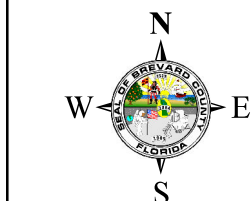
290

293

254.1

SMITH RD

GRANT RD



1:4,800 or 1 inch = 400 feet

This map was compiled from recorded documents and does not reflect an actual survey. The Brevard County Board of County Commissioners does not assume responsibility for errors or omissions hereon.

Produced by BoCC - GIS Date: 3/12/2020

## SJRWMD FLUCCS Upland Forests

- Upland Coniferous Forest - 4100 Series
- Upland Hardwood Forest - 4200 Series
- Upland Mixed Forest - 4300 Series
- Tree Plantations - 4400 Series

Subject Property  Parcels