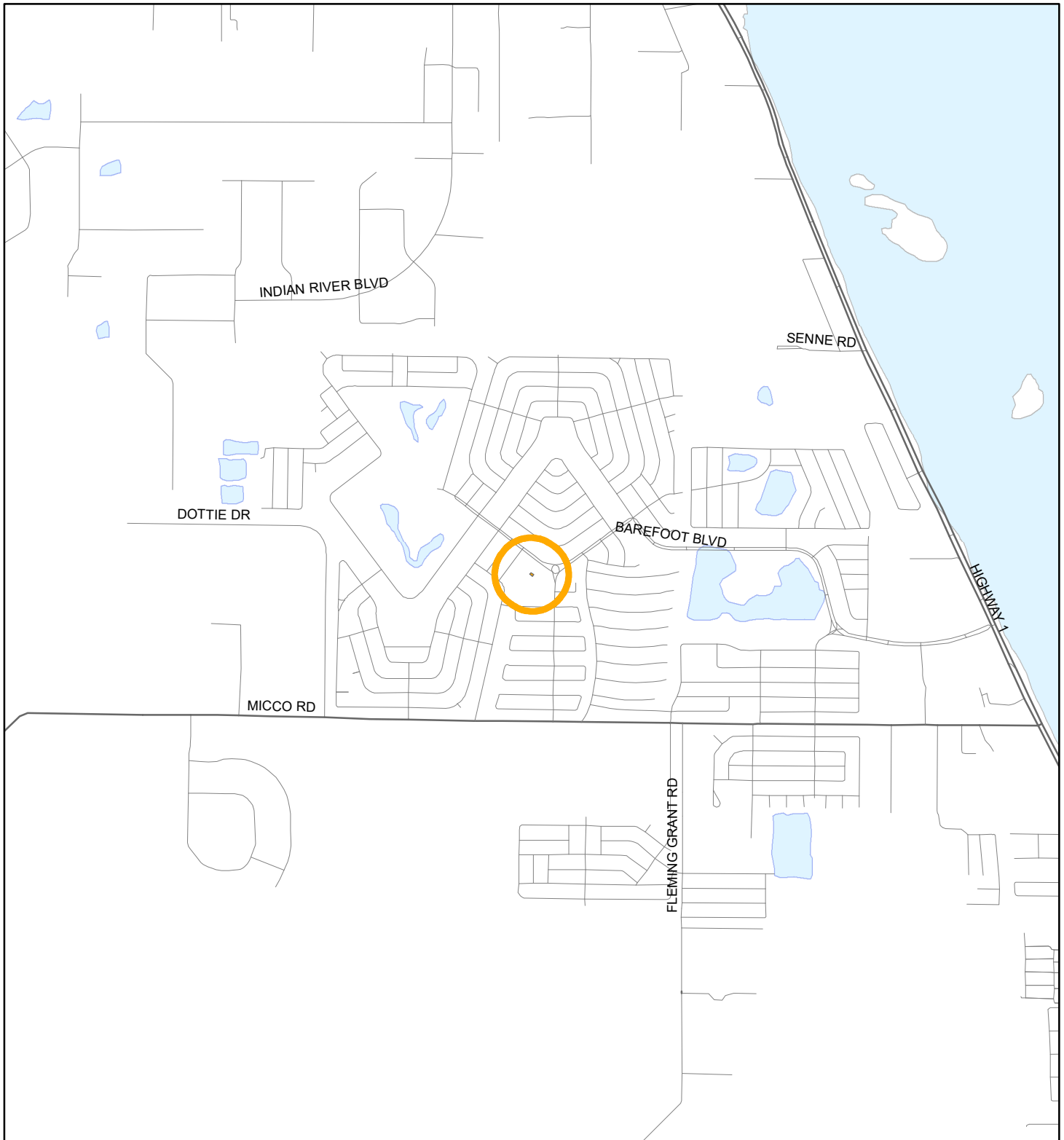


LOCATION MAP

BAREFOOT BAY RECREATION DISTRICT

19PZ00141





1:24,000 or 1 inch = 2,000 feet

Buffer Distance: 500 feet

This map was compiled from recorded documents and does not reflect an actual survey. The Brevard County Board of County Commissioners does not assume responsibility for errors or omissions hereon.

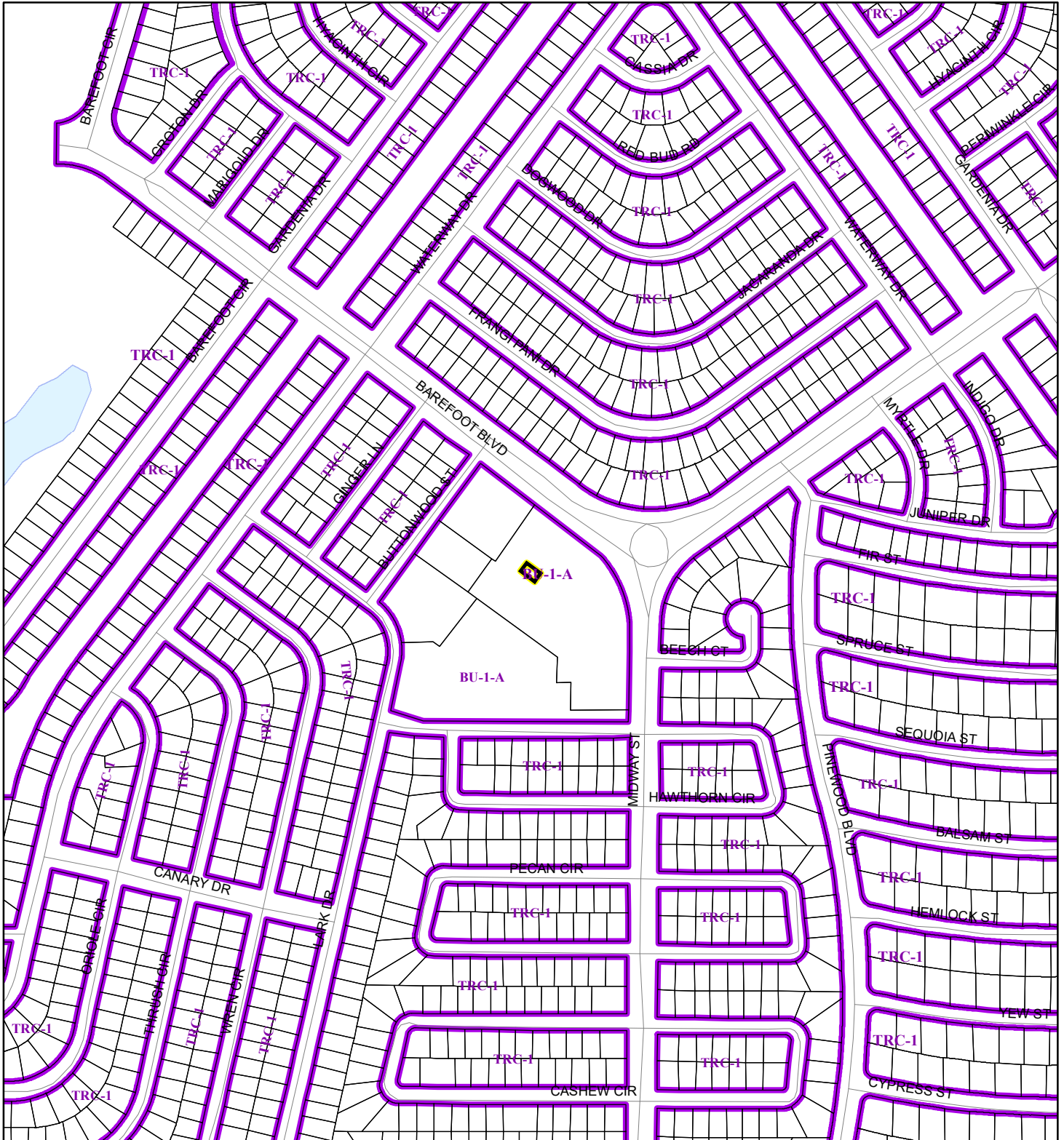
Produced by BoCC - GIS Date: 11/15/2019

 Buffer
 Subject Property

ZONING MAP

BAREFOOT BAY RECREATION DISTRICT

19PZ00141



1:4,800 or 1 inch = 400 feet

This map was compiled from recorded documents and does not reflect an actual survey. The Brevard County Board of County Commissioners does not assume responsibility for errors or omissions hereon.

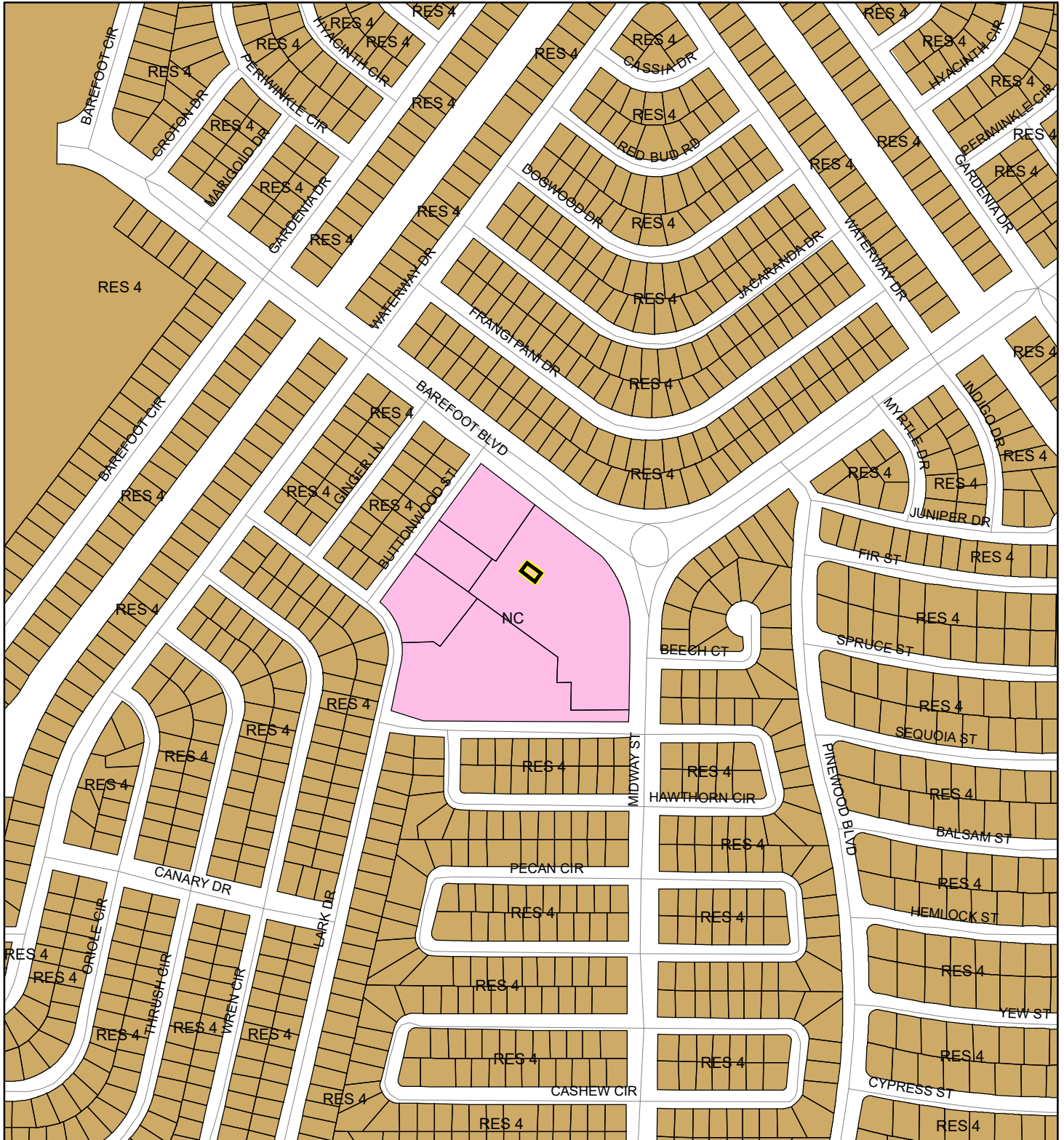
Produced by BoCC - GIS Date: 11/15/2019

- Subject Property
- Parcels
- Zoning



FUTURE LAND USE MAP

BAREFOOT BAY RECREATION DISTRICT

19PZ00141



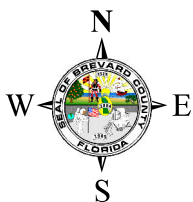
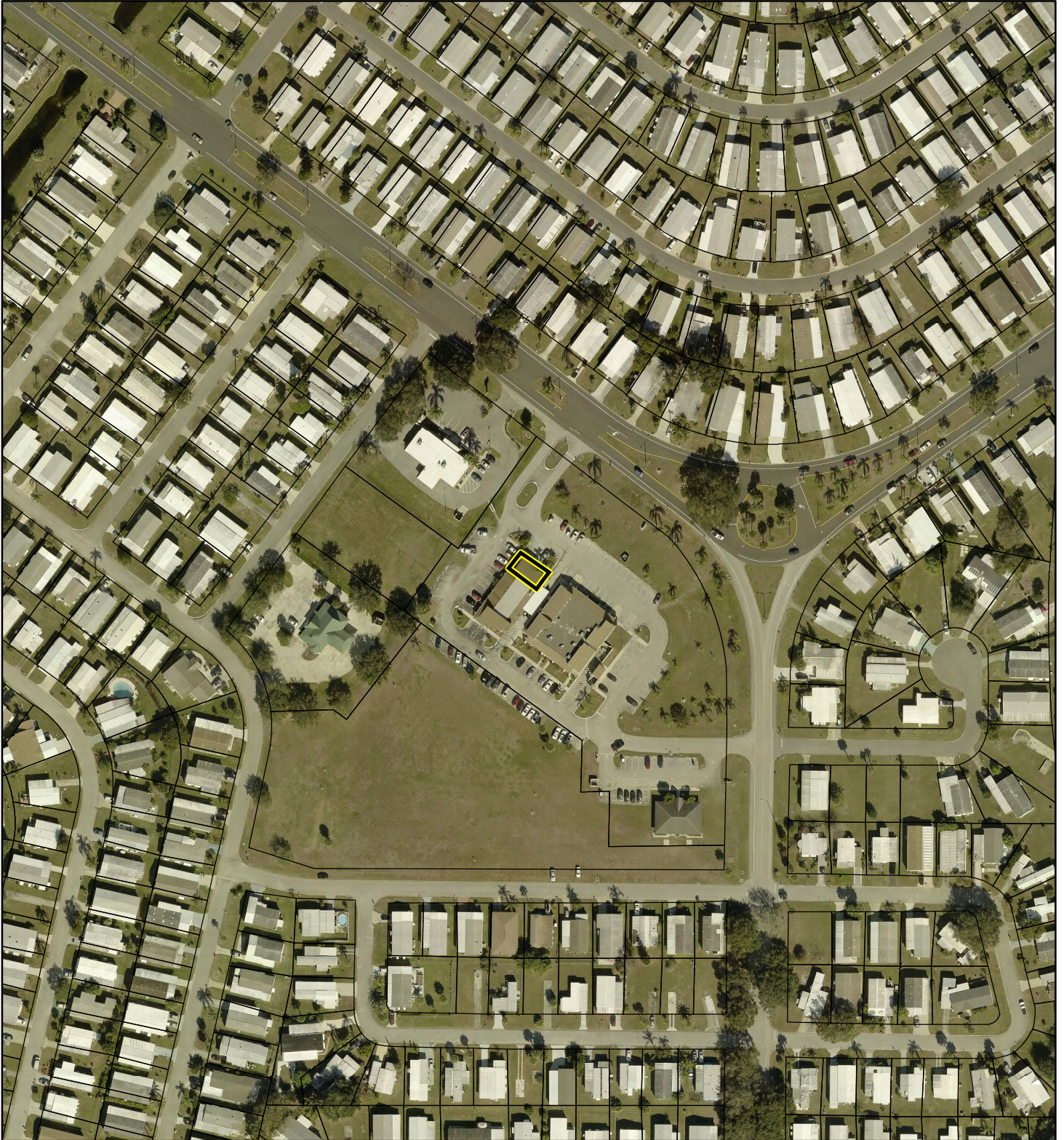
1:4,800 or 1 inch = 400 feet

 Subject Property
 Parcels

This map was compiled from recorded documents and does not reflect an actual survey. The Brevard County Board of County Commissioners does not assume responsibility for errors or omissions hereon.

Produced by BoCC - GIS Date: 11/15/2019

AERIAL MAP
BAREFOOT BAY RECREATION DISTRICT
19PZ00141





1:2,400 or 1 inch = 200 feet

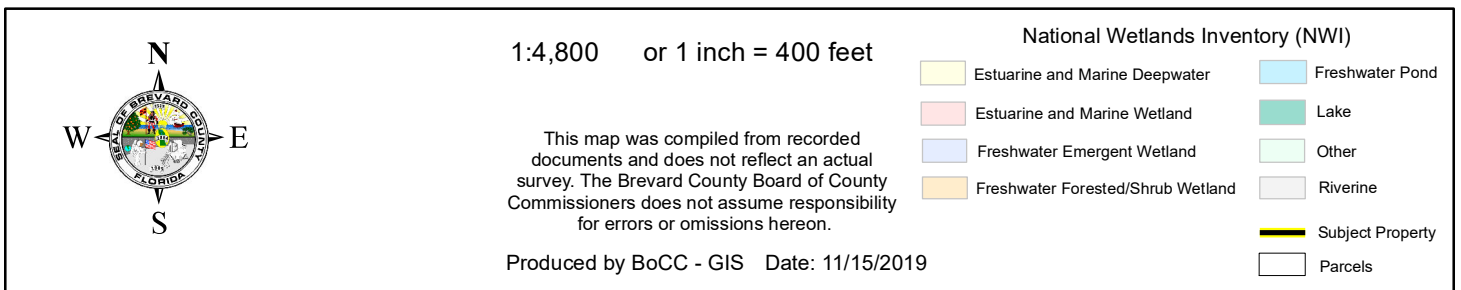
PHOTO YEAR: 2019

This map was compiled from recorded documents and does not reflect an actual survey. The Brevard County Board of County Commissioners does not assume responsibility for errors or omissions hereon.

Produced by BoCC - GIS Date: 11/15/2019

 Subject Property
 Parcels

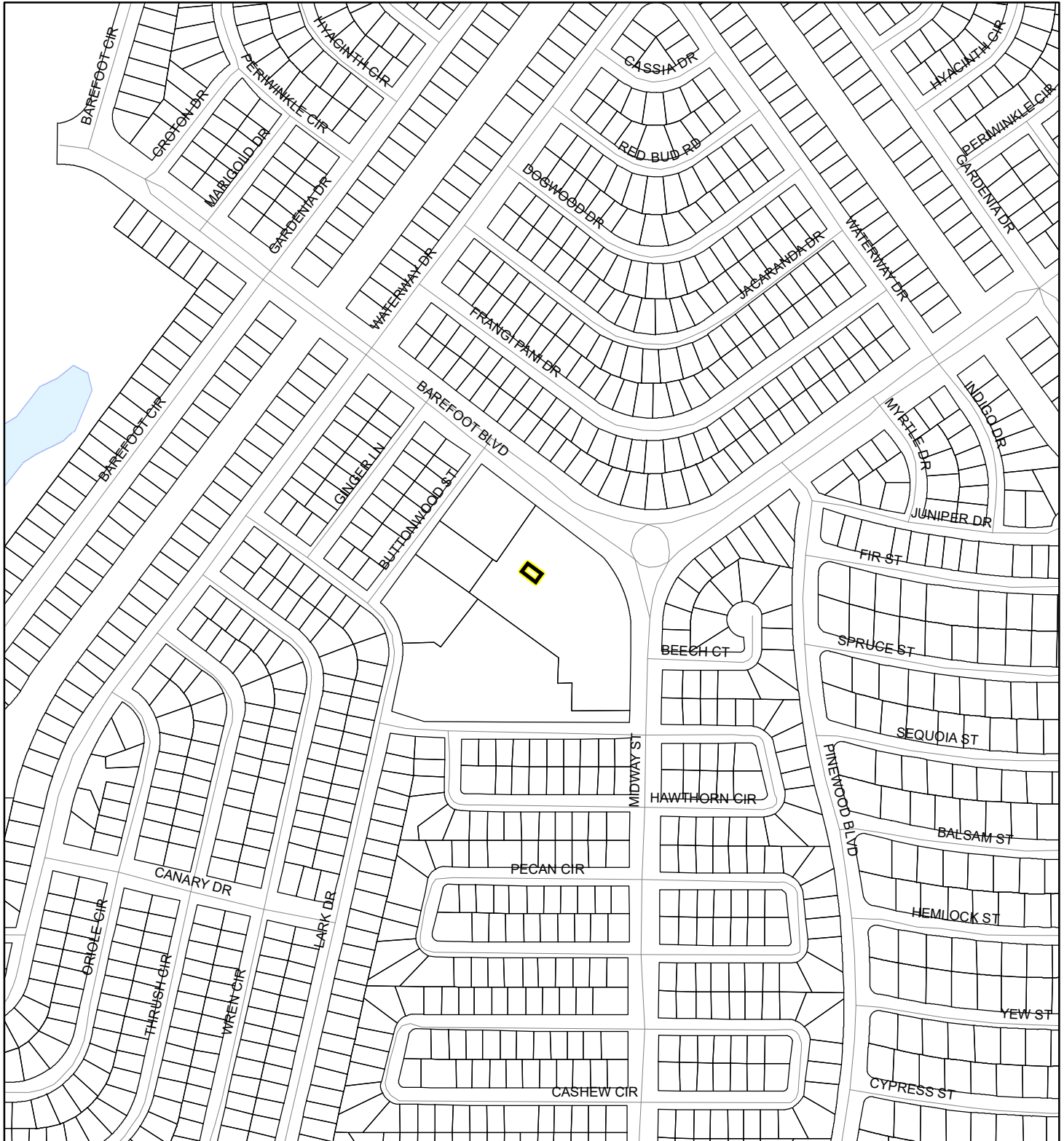
19PZ00141



SJRWMD FLUCCS WETLANDS - 6000 Series MAP

BAREFOOT BAY RECREATION DISTRICT

19PZ00141



1:4,800 or 1 inch = 400 feet

This map was compiled from recorded documents and does not reflect an actual survey. The Brevard County Board of County Commissioners does not assume responsibility for errors or omissions hereon.

Produced by BoCC - GIS Date: 11/15/2019

SJRWMD FLUCCS WETLANDS

- Wetland Hardwood Forests - Series 6100
- Wetland Coniferous Forest - Series 6200
- Wetland Forested Mixed - Series 6300
- Vegetated Non-Forested Wetlands - Series 6400
- Non-Vegetated Wetland - Series 6500

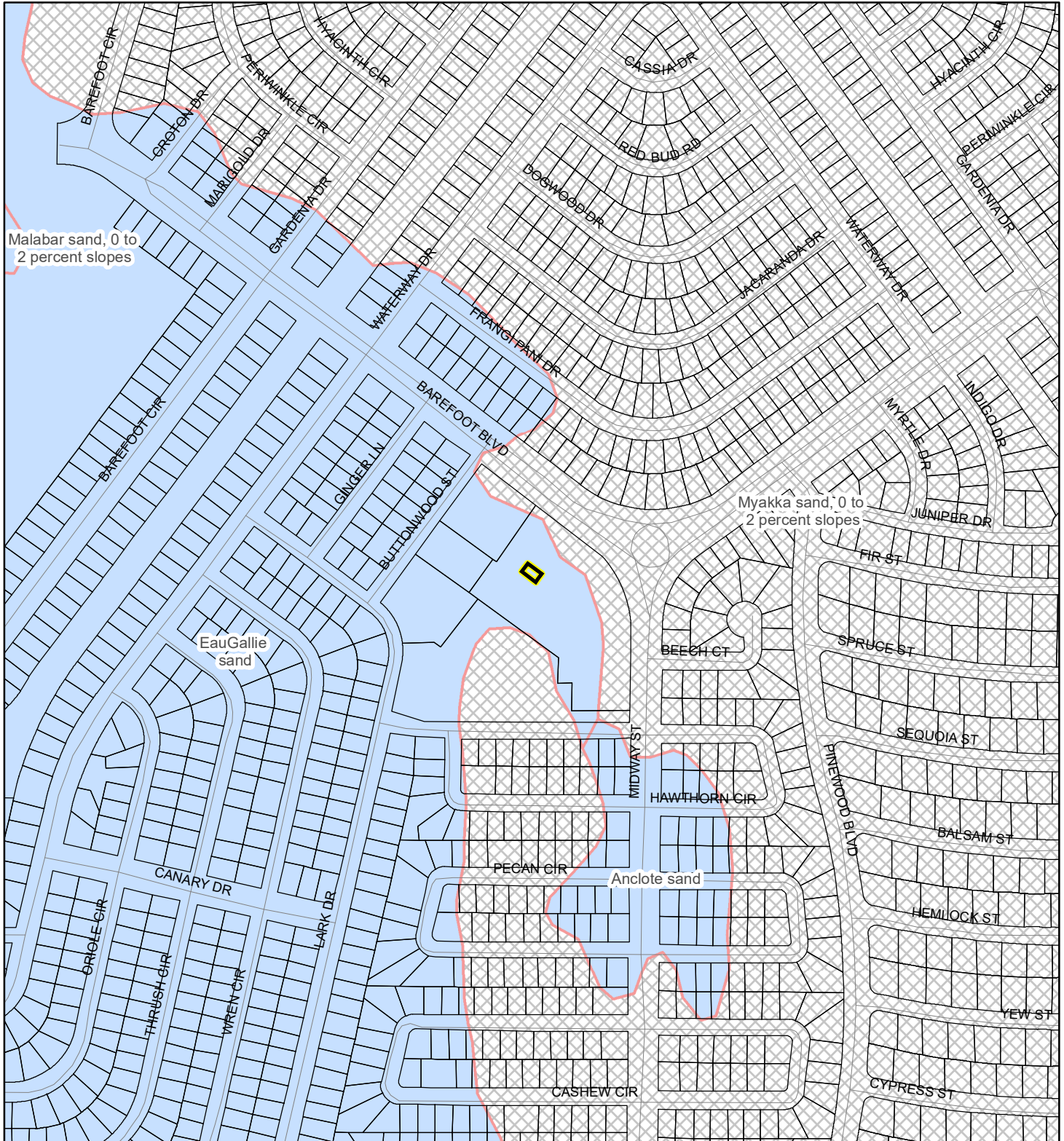
Subject Property

Parcels

USDA SCSSS SOILS MAP

BAREFOOT BAY RECREATION DISTRICT

19PZ00141



1:4,800 or 1 inch = 400 feet

This map was compiled from recorded documents and does not reflect an actual survey. The Brevard County Board of County Commissioners does not assume responsibility for errors or omissions hereon.

Produced by BoCC - GIS Date: 11/15/2019

USDA SCSSS Soils

- Aquifer and Hydric
- Aquifer
- Hydric
- None

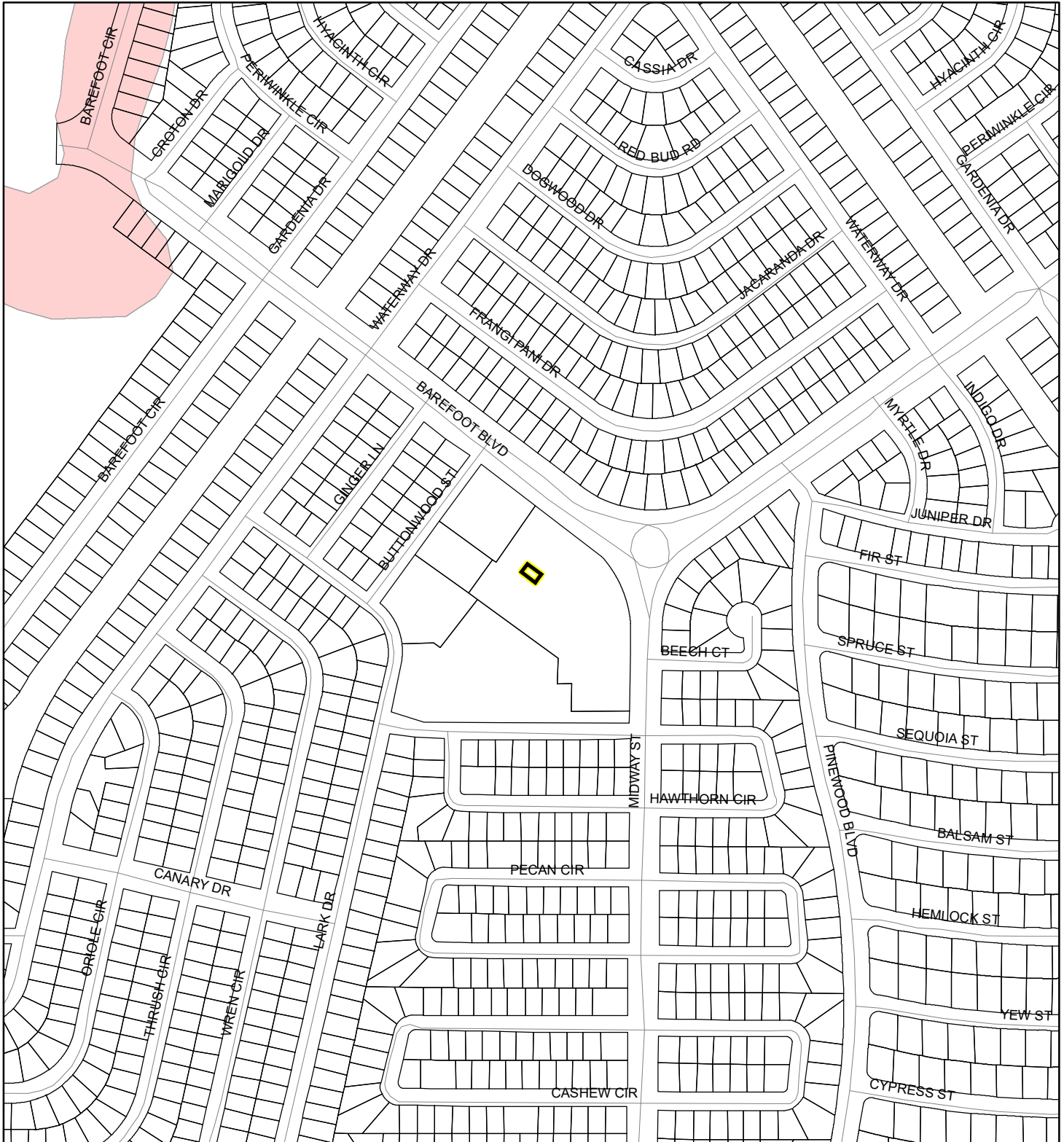
Subject Property

Parcels

FEMA FLOOD ZONES MAP

BAREFOOT BAY RECREATION DISTRICT

19PZ00141



1:4,800 or 1 inch = 400 feet

This map was compiled from recorded documents and does not reflect an actual survey. The Brevard County Board of County Commissioners does not assume responsibility for errors or omissions hereon.

Produced by BoCC - GIS Date: 11/15/2019

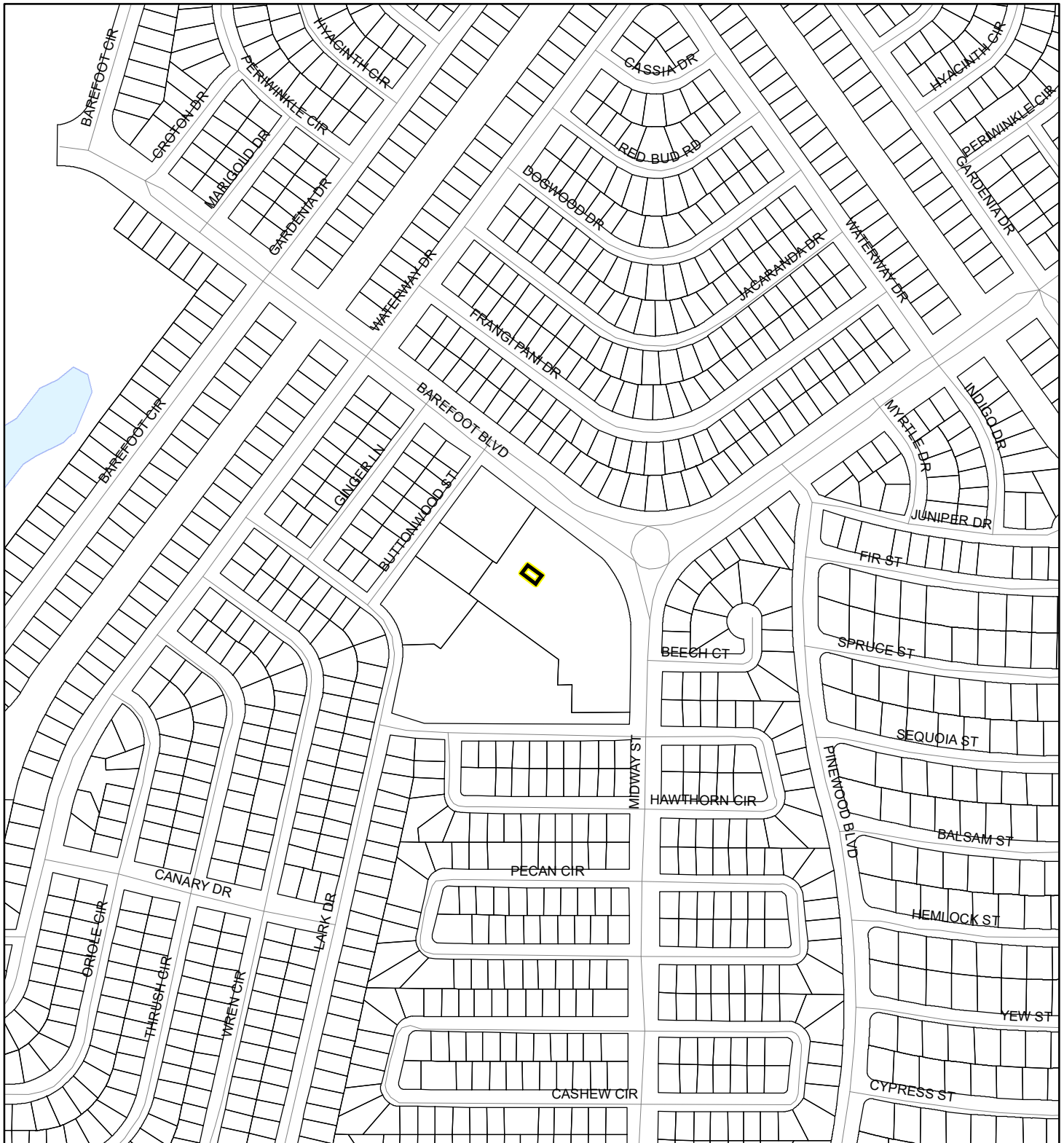
FEMA Flood Zones

A	AO	X
AE	Open Water	X Protected By Levee
AH	VE	
0.2 Percent Annual Chance Flood Hazard		
0.2 Percent Annual Chance Flood Hazard Contained in Channel		
Subject Property		Parcels

COASTAL HIGH HAZARD AREA MAP

BAREFOOT BAY RECREATION DISTRICT

19PZ00141



1:4,800 or 1 inch = 400 feet


This map was compiled from recorded documents and does not reflect an actual survey. The Brevard County Board of County Commissioners does not assume responsibility for errors or omissions hereon.

Produced by BoCC - GIS Date: 11/15/2019

 Subject Property

 Parcels

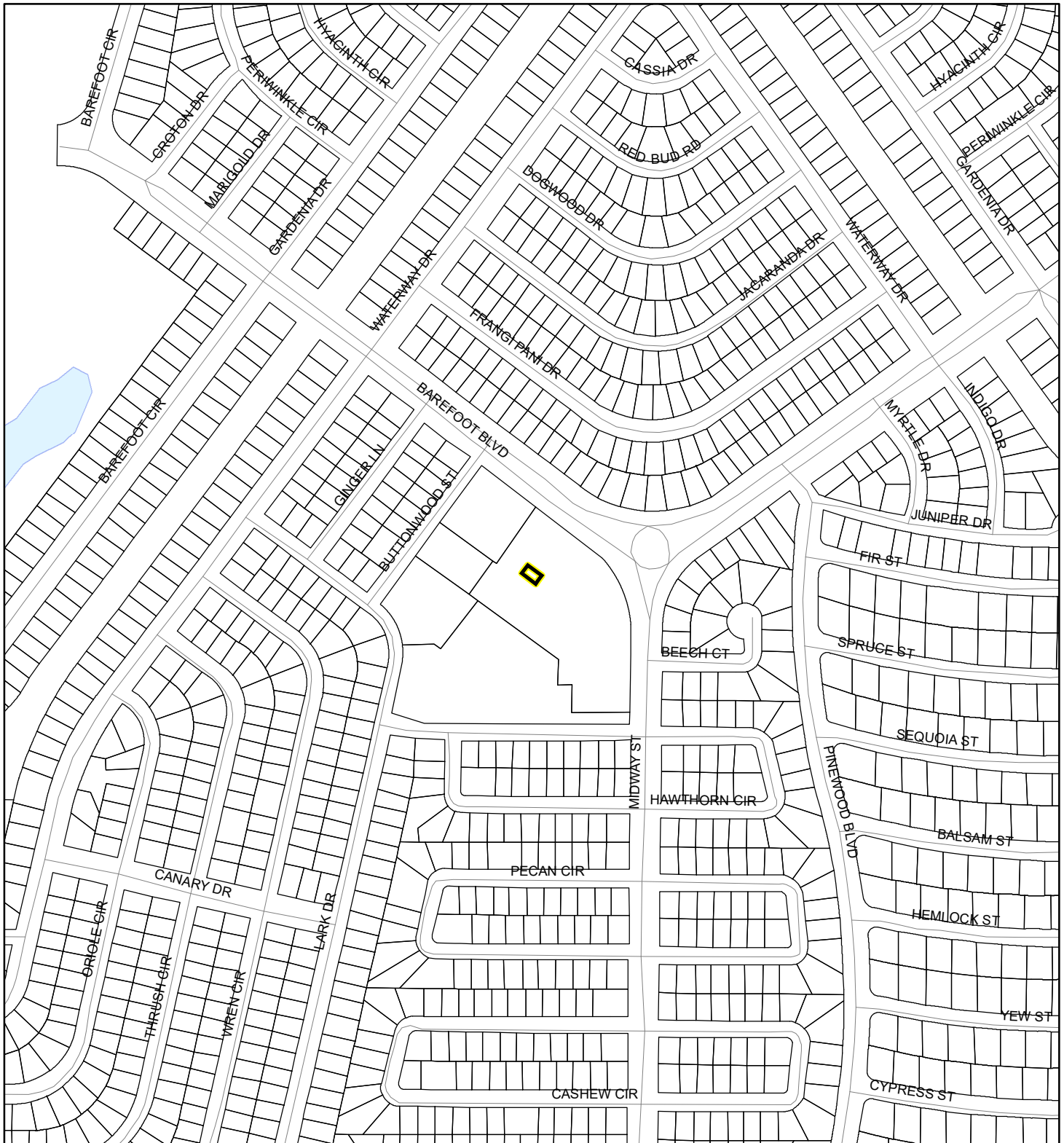
Coastal High Hazard Area

 SurgeZoneCat1

INDIAN RIVER LAGOON SEPTIC OVERLAY MAP

BAREFOOT BAY RECREATION DISTRICT

19PZ00141



1:4,800 or 1 inch = 400 feet

This map was compiled from recorded documents and does not reflect an actual survey. The Brevard County Board of County Commissioners does not assume responsibility for errors or omissions hereon.

Produced by BoCC - GIS Date: 11/15/2019

 Subject Property

 Parcels

Septic Overlay

 40 Meters

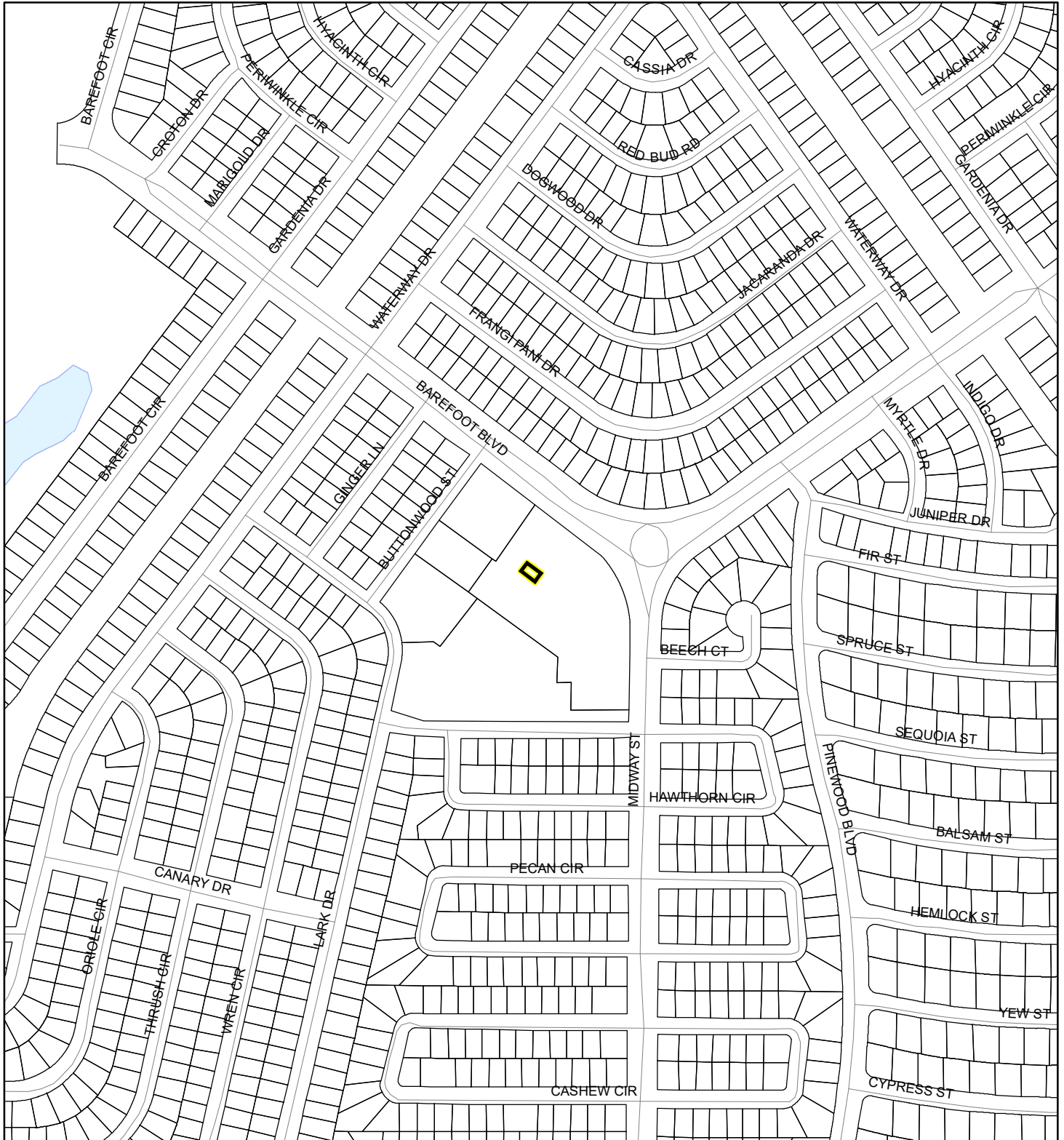
 60 Meters

 All Distances

EAGLE NESTS MAP

BAREFOOT BAY RECREATION DISTRICT

19PZ00141




1:4,800 or 1 inch = 400 feet

This map was compiled from recorded documents and does not reflect an actual survey. The Brevard County Board of County Commissioners does not assume responsibility for errors or omissions hereon.

Produced by BoCC - GIS Date: 11/15/2019

 Subject Property

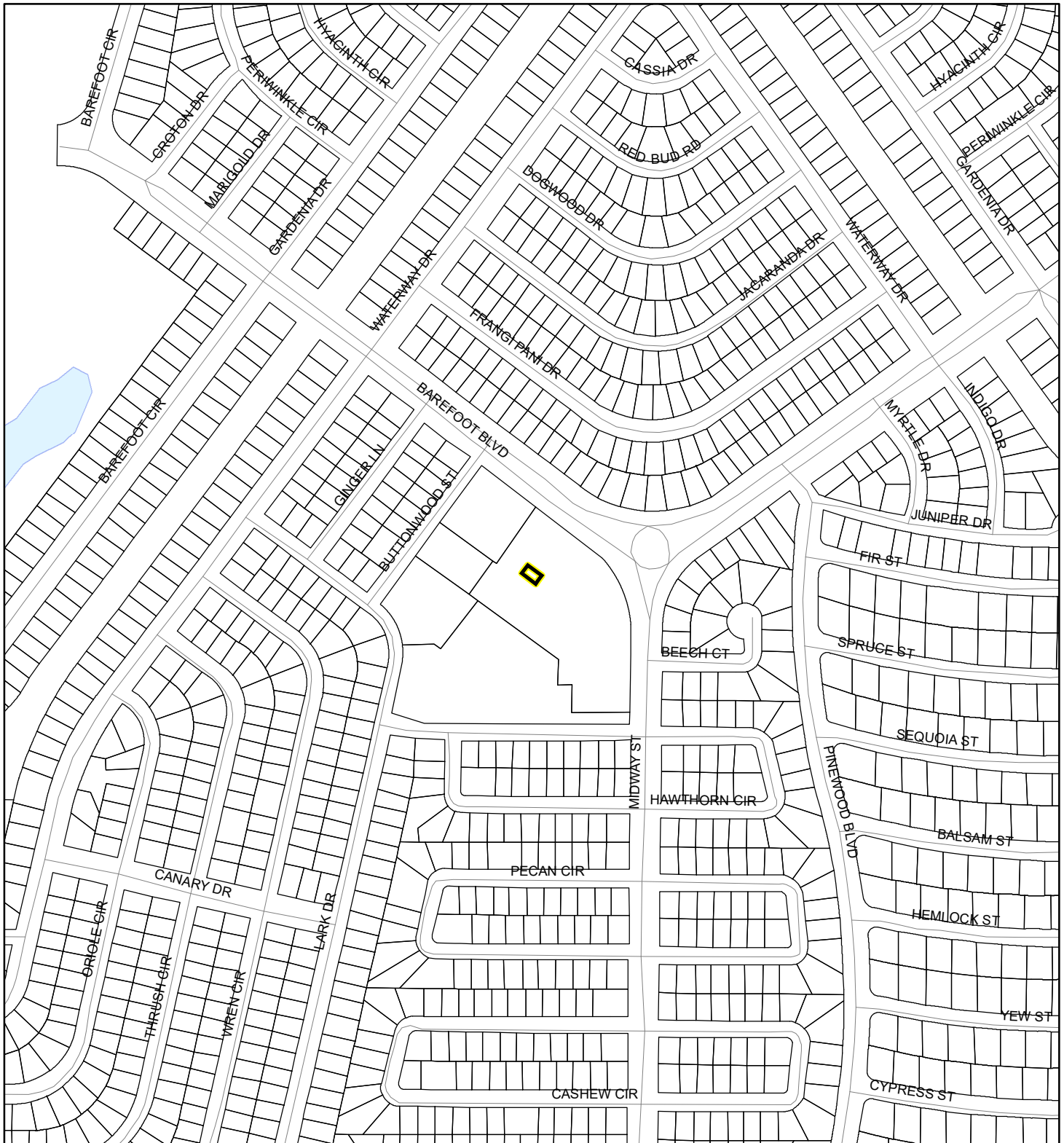
 Parcels

 Eagle Nests
FWS 2010

SCRUB JAY OCCUPANCY MAP

BAREFOOT BAY RECREATION DISTRICT


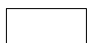

19PZ00141



1:4,800 or 1 inch = 400 feet

This map was compiled from recorded documents and does not reflect an actual survey. The Brevard County Board of County Commissioners does not assume responsibility for errors or omissions hereon.

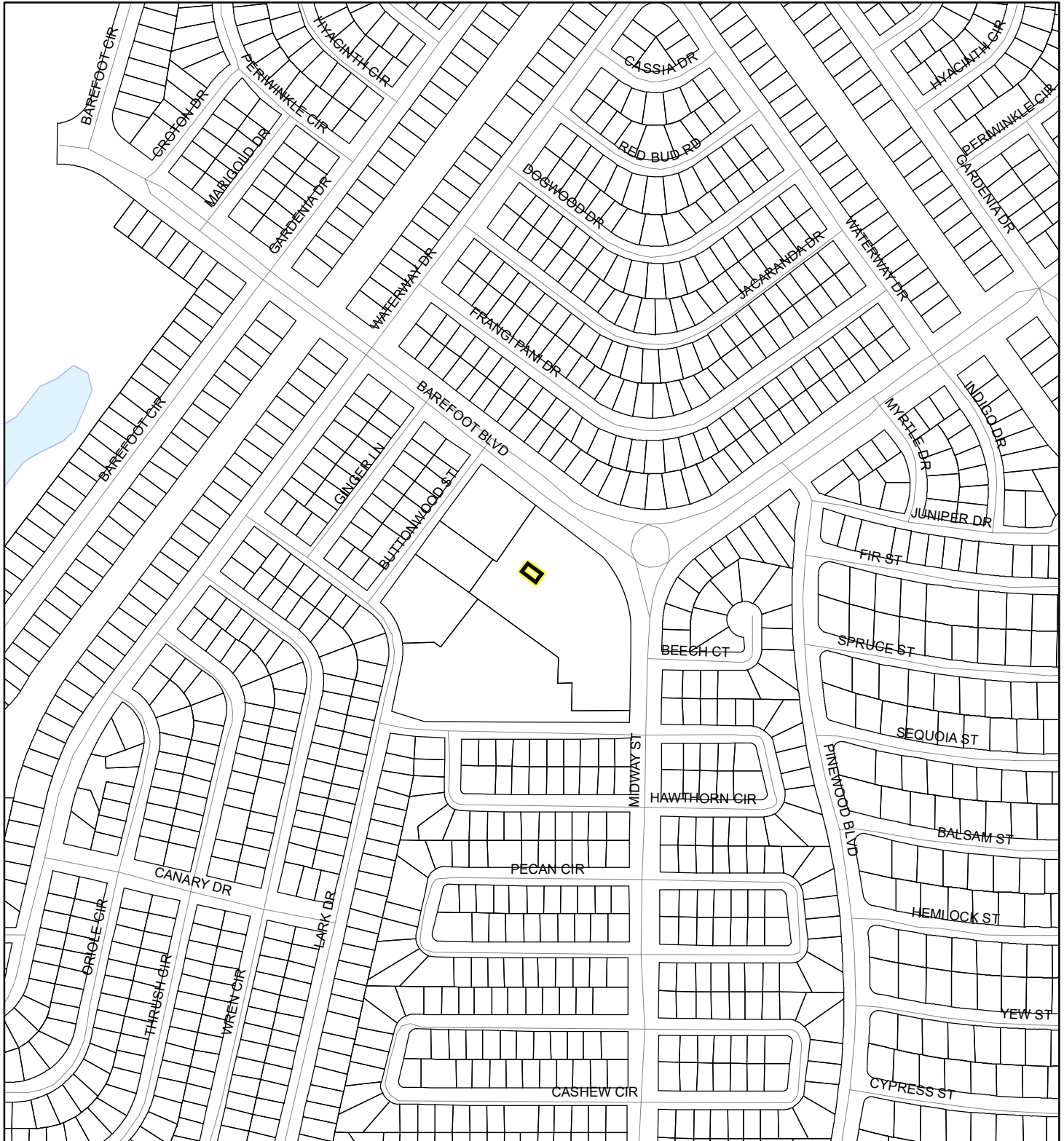
Produced by BoCC - GIS Date: 11/15/2019

-  Subject Property
-  Parcels
-  Scrub Jay Occupancy

SJRWMD FLUCCS UPLAND FORESTS - 4000 Series MAP

BAREFOOT BAY RECREATION DISTRICT

19PZ00141

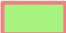





1:4,800 or 1 inch = 400 feet

This map was compiled from recorded documents and does not reflect an actual survey. The Brevard County Board of County Commissioners does not assume responsibility for errors or omissions hereon.

Produced by BoCC - GIS Date: 11/15/2019

SJRWMD FLUCCS Upland Forests

-  Upland Coniferous Forest - 4100 Series
-  Upland Hardwood Forest - 4200 Series
-  Upland Mixed Forest - 4300 Series
-  Tree Plantations - 4400 Series

 Subject Property

 Parcels