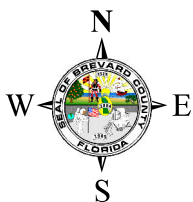
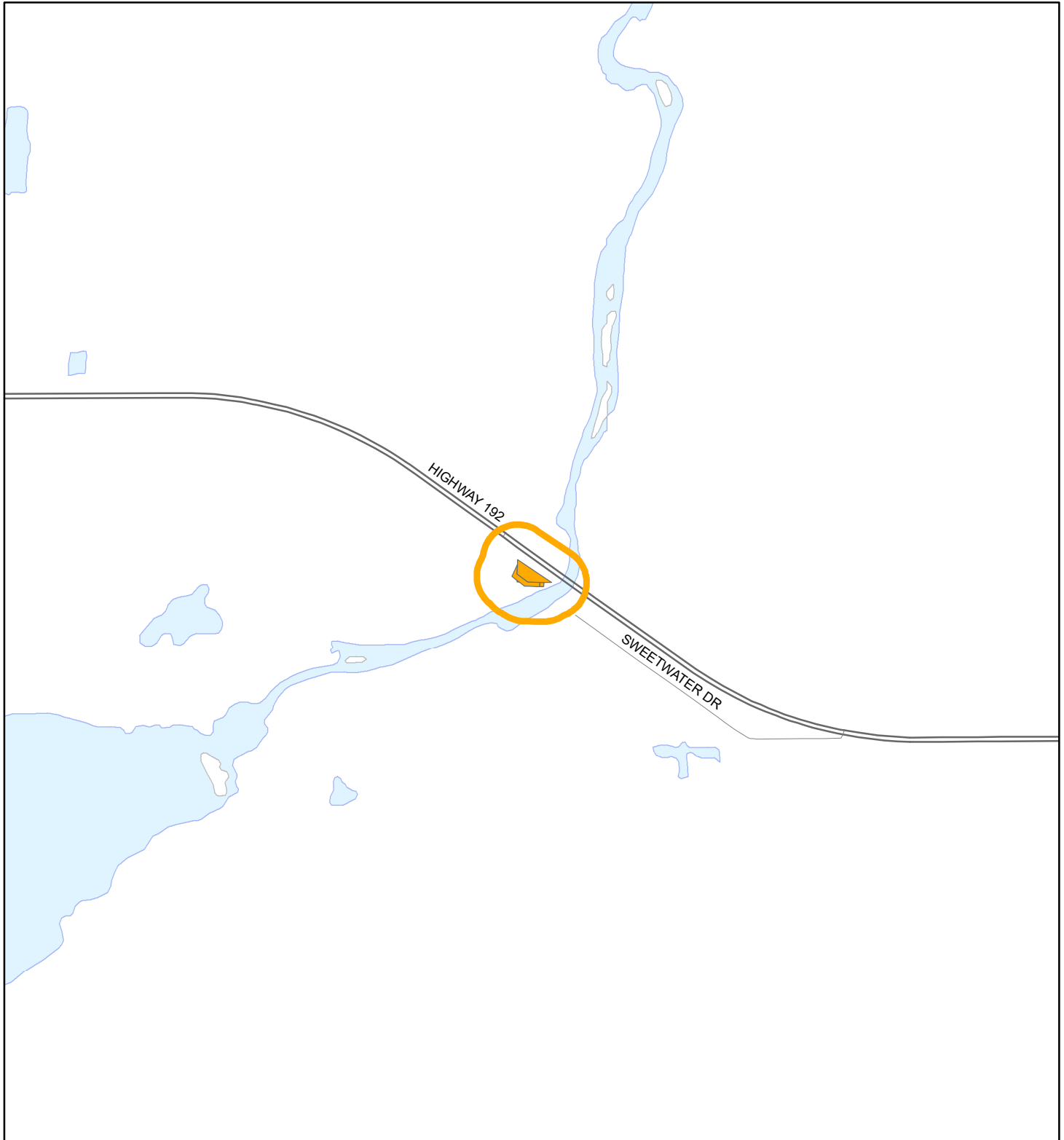


LOCATION MAP  
HOLLY ENTERPRISES OF BREVARD, INC.  
19PZ00137





1:24,000 or 1 inch = 2,000 feet

Buffer Distance: 500 feet

This map was compiled from recorded documents and does not reflect an actual survey. The Brevard County Board of County Commissioners does not assume responsibility for errors or omissions hereon.

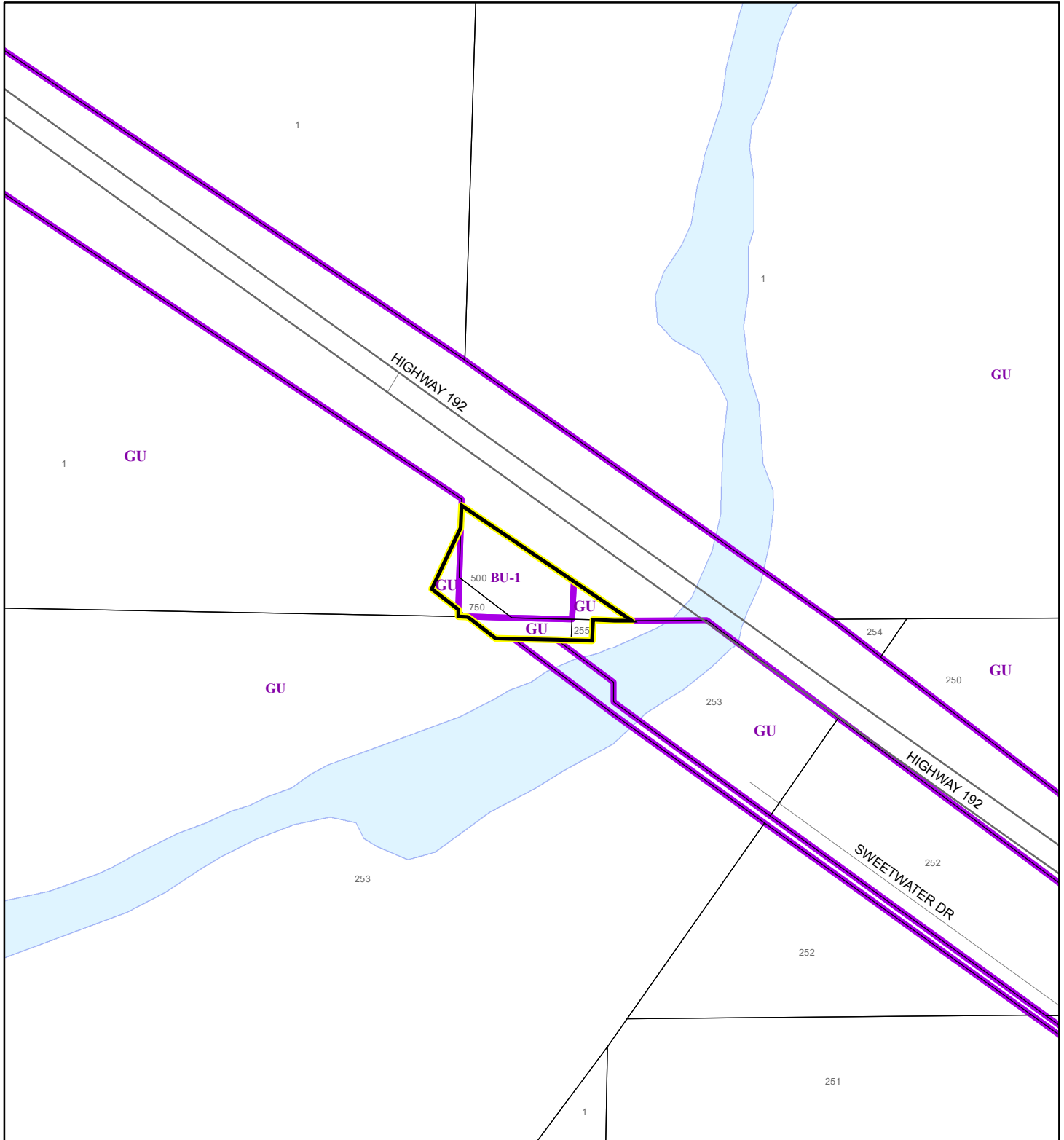
Produced by BoCC - GIS Date: 11/7/2019

 Buffer  
 Subject Property

# ZONING MAP

HOLLY ENTERPRISES OF BREVARD, INC.


19PZ00137



1:4,800 or 1 inch = 400 feet

This map was compiled from recorded documents and does not reflect an actual survey. The Brevard County Board of County Commissioners does not assume responsibility for errors or omissions hereon.

Produced by BoCC - GIS Date: 11/7/2019

 Subject Property

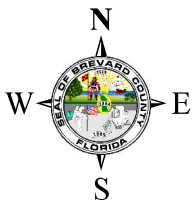
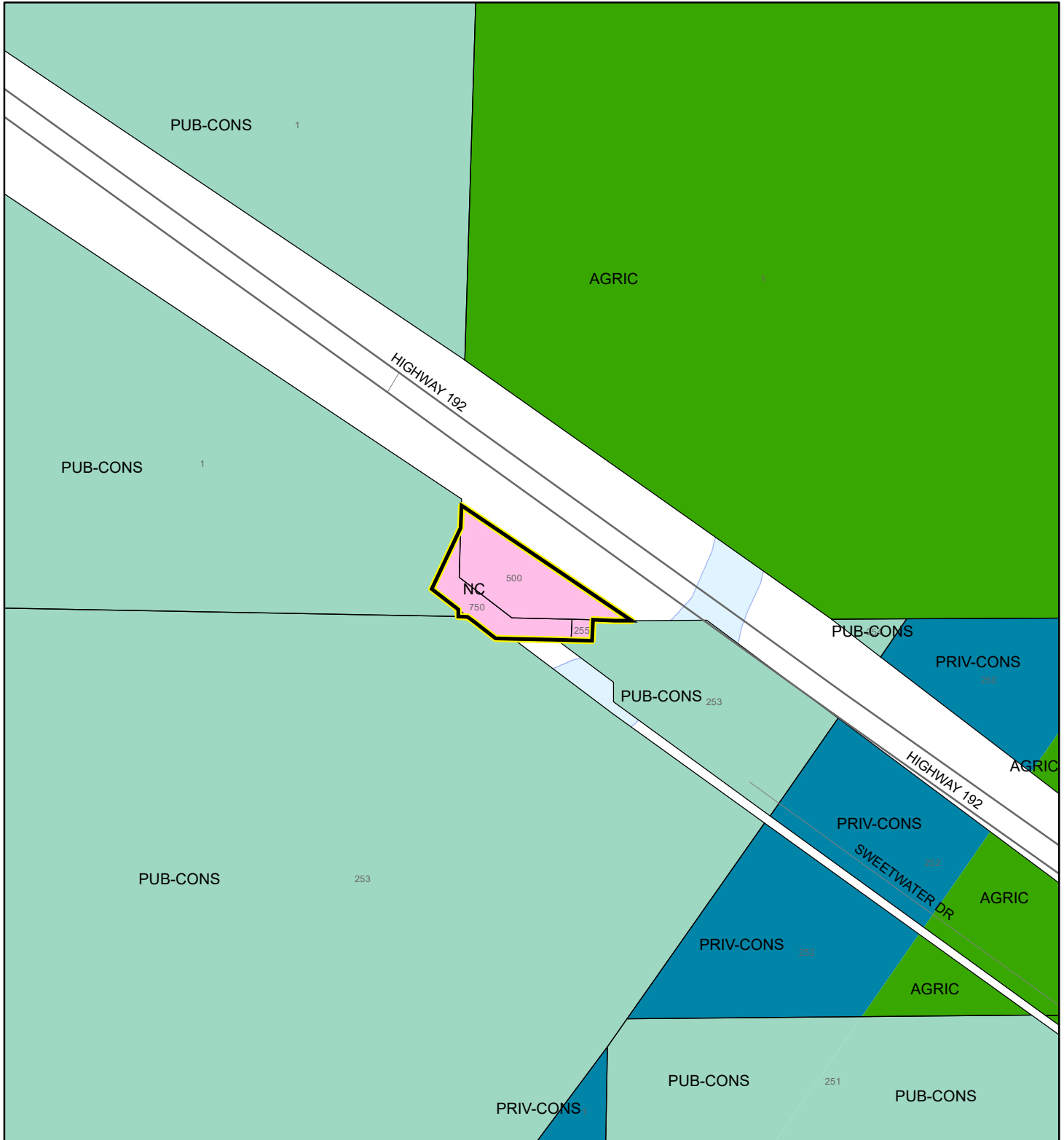
 Parcels

 Zoning



# FUTURE LAND USE MAP

HOLLY ENTERPRISES OF BREVARD, INC.

19PZ00137



1:4,800 or 1 inch = 400 feet

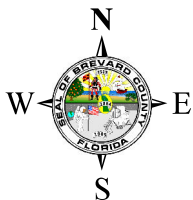
 Subject Property  
 Parcels

This map was compiled from recorded documents and does not reflect an actual survey. The Brevard County Board of County Commissioners does not assume responsibility for errors or omissions hereon.

Produced by BoCC - GIS Date: 12/11/2019



AERIAL MAP  
HOLLY ENTERPRISES OF BREVARD, INC.  
19PZ00137




1:2,400 or 1 inch = 200 feet

PHOTO YEAR: 2019

This map was compiled from recorded documents and does not reflect an actual survey. The Brevard County Board of County Commissioners does not assume responsibility for errors or omissions hereon.

Produced by BoCC - GIS Date: 11/7/2019

 Subject Property

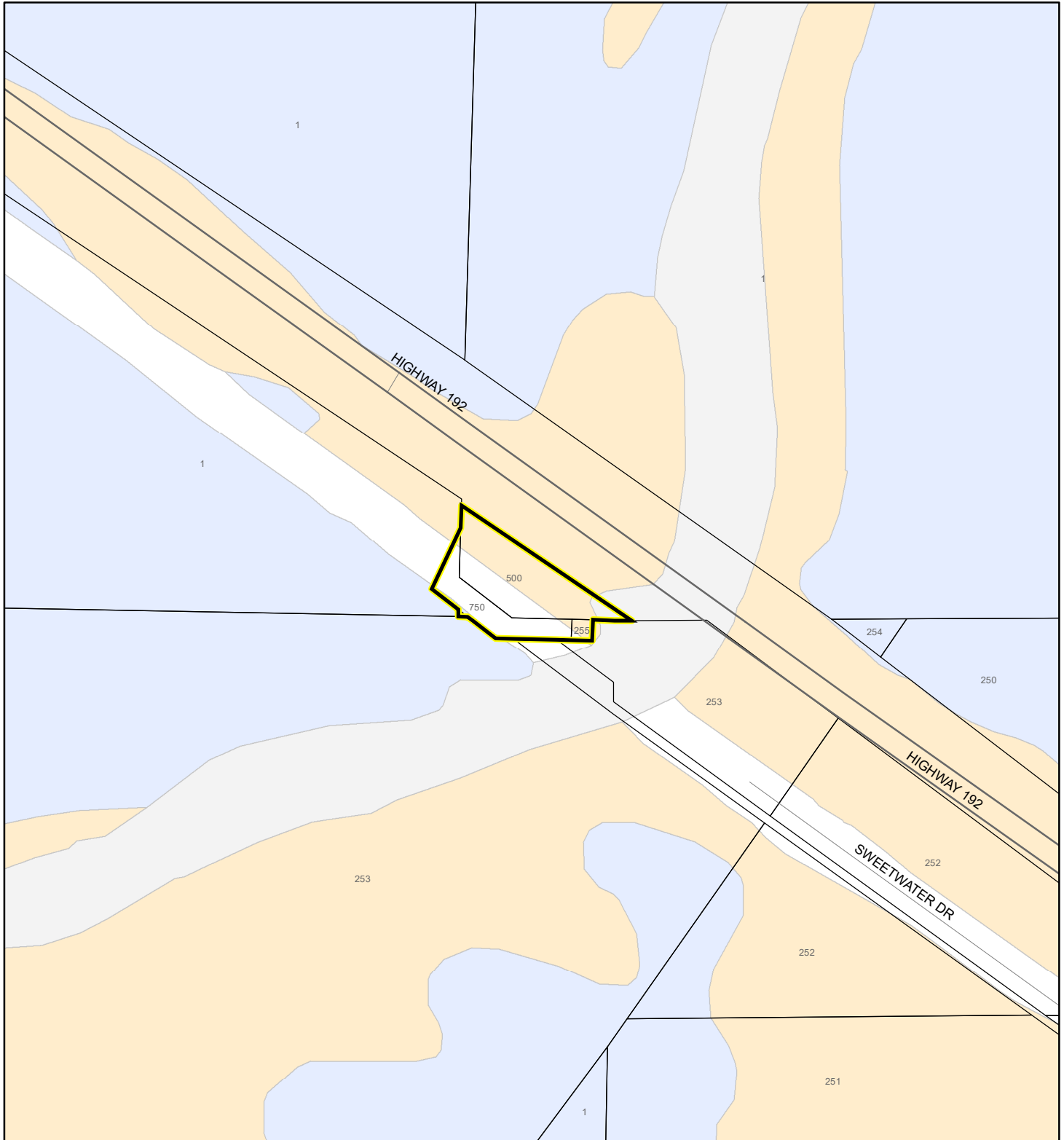
 Parcels



# NWI WETLANDS MAP

HOLLY ENTERPRISES OF BREVARD, INC.

19PZ00137



1:4,800 or 1 inch = 400 feet

This map was compiled from recorded documents and does not reflect an actual survey. The Brevard County Board of County Commissioners does not assume responsibility for errors or omissions hereon.

Produced by BoCC - GIS Date: 11/7/2019

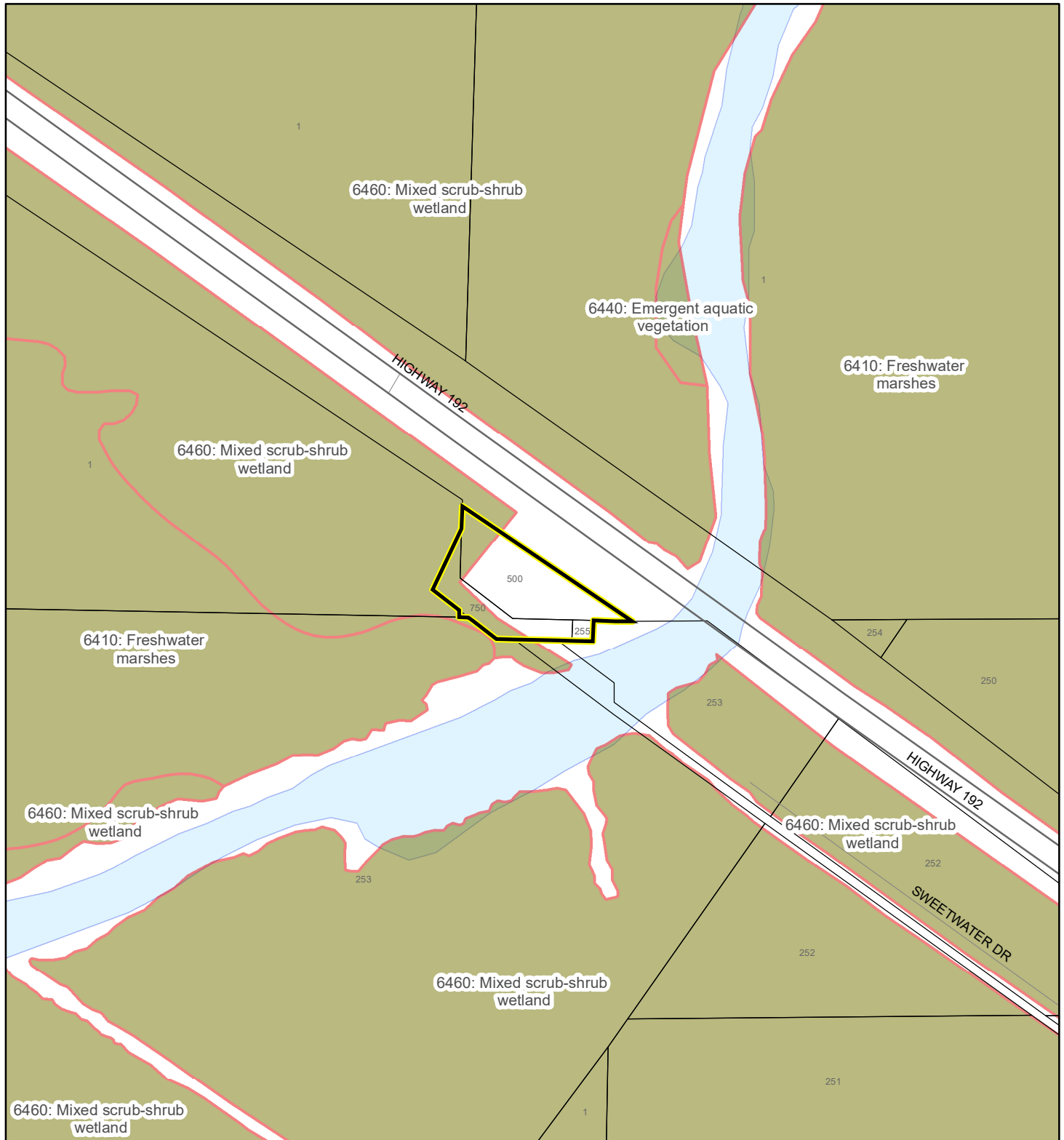
## National Wetlands Inventory (NWI)

Estuarine and Marine Deepwater	Freshwater Pond
Estuarine and Marine Wetland	Lake
Freshwater Emergent Wetland	Other
Freshwater Forested/Shrub Wetland	Riverine
Subject Property	
Parcels	

# SJRWMD FLUCCS WETLANDS - 6000 Series MAP

HOLLY ENTERPRISES OF BREVARD, INC.

19PZ00137



1:4,800 or 1 inch = 400 feet

This map was compiled from recorded documents and does not reflect an actual survey. The Brevard County Board of County Commissioners does not assume responsibility for errors or omissions hereon.

Produced by BoCC - GIS Date: 11/7/2019

## SJRWMD FLUCCS WETLANDS

- Wetland Hardwood Forests - Series 6100
- Wetland Coniferous Forest - Series 6200
- Wetland Forested Mixed - Series 6300
- Vegetated Non-Forested Wetlands - Series 6400
- Non-Vegetated Wetland - Series 6500

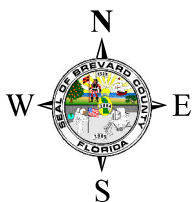
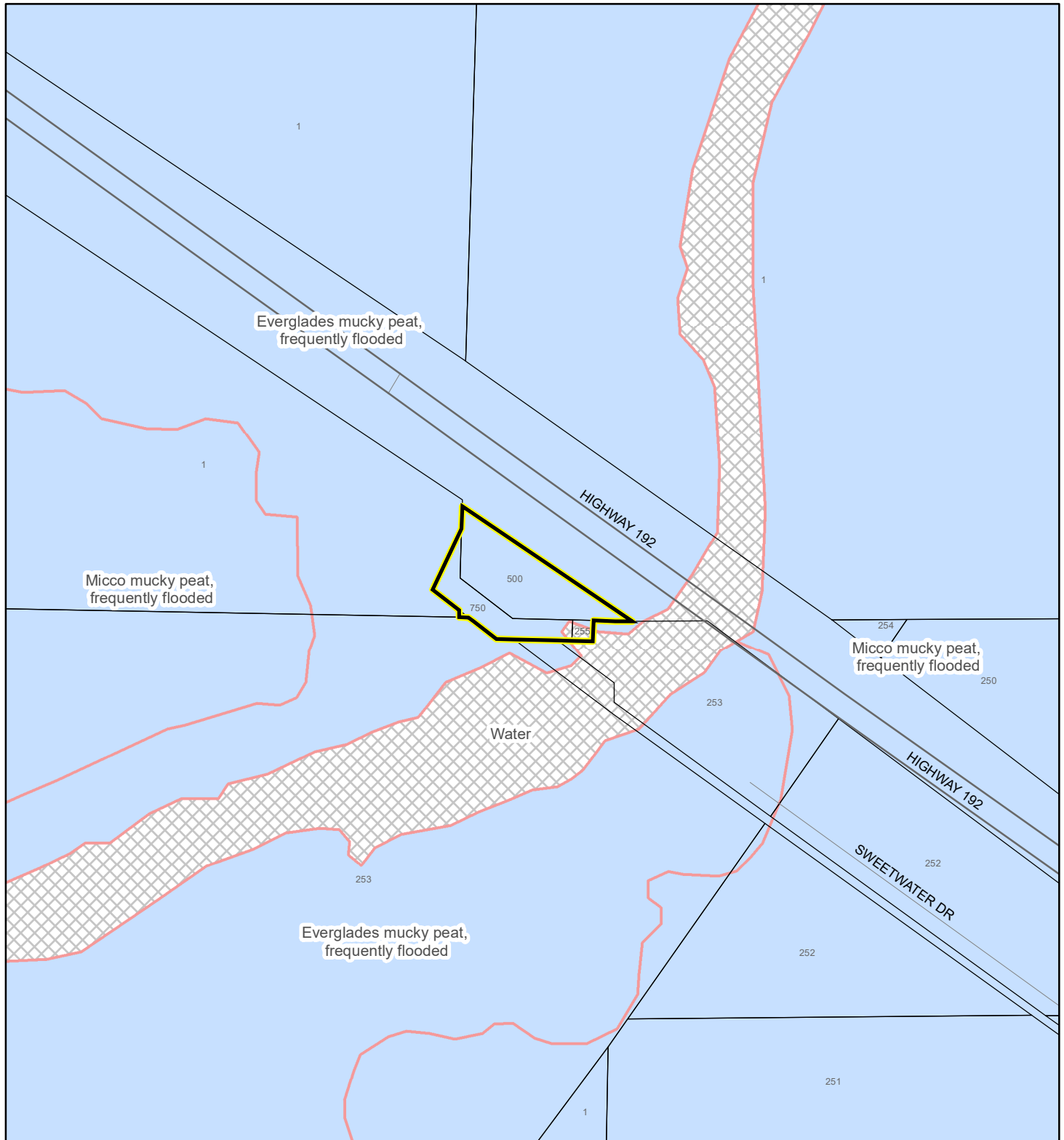
Subject Property

Parcels

# USDA SCSSS SOILS MAP

HOLLY ENTERPRISES OF BREVARD, INC.

19PZ00137



1:4,800 or 1 inch = 400 feet

This map was compiled from recorded documents and does not reflect an actual survey. The Brevard County Board of County Commissioners does not assume responsibility for errors or omissions hereon.

Produced by BoCC - GIS Date: 11/7/2019

## USDA SCSSS Soils

- Aquifer and Hydric
- Aquifer
- Hydric
- None

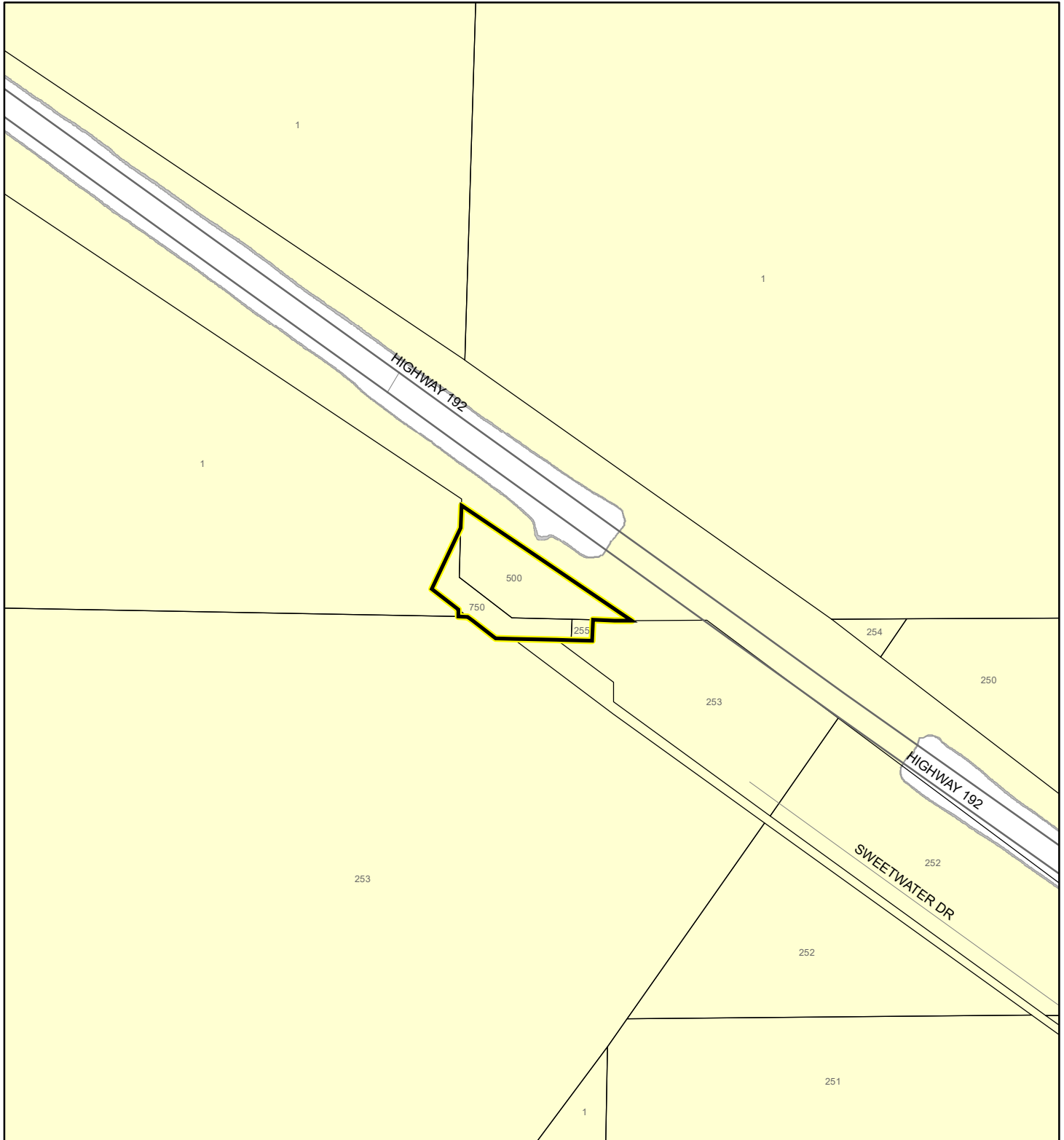
Subject Property

Parcels

# FEMA FLOOD ZONES MAP

HOLLY ENTERPRISES OF BREVARD, INC.

19PZ00137



1:4,800 or 1 inch = 400 feet

This map was compiled from recorded documents and does not reflect an actual survey. The Brevard County Board of County Commissioners does not assume responsibility for errors or omissions hereon.

Produced by BoCC - GIS Date: 11/7/2019

## FEMA Flood Zones

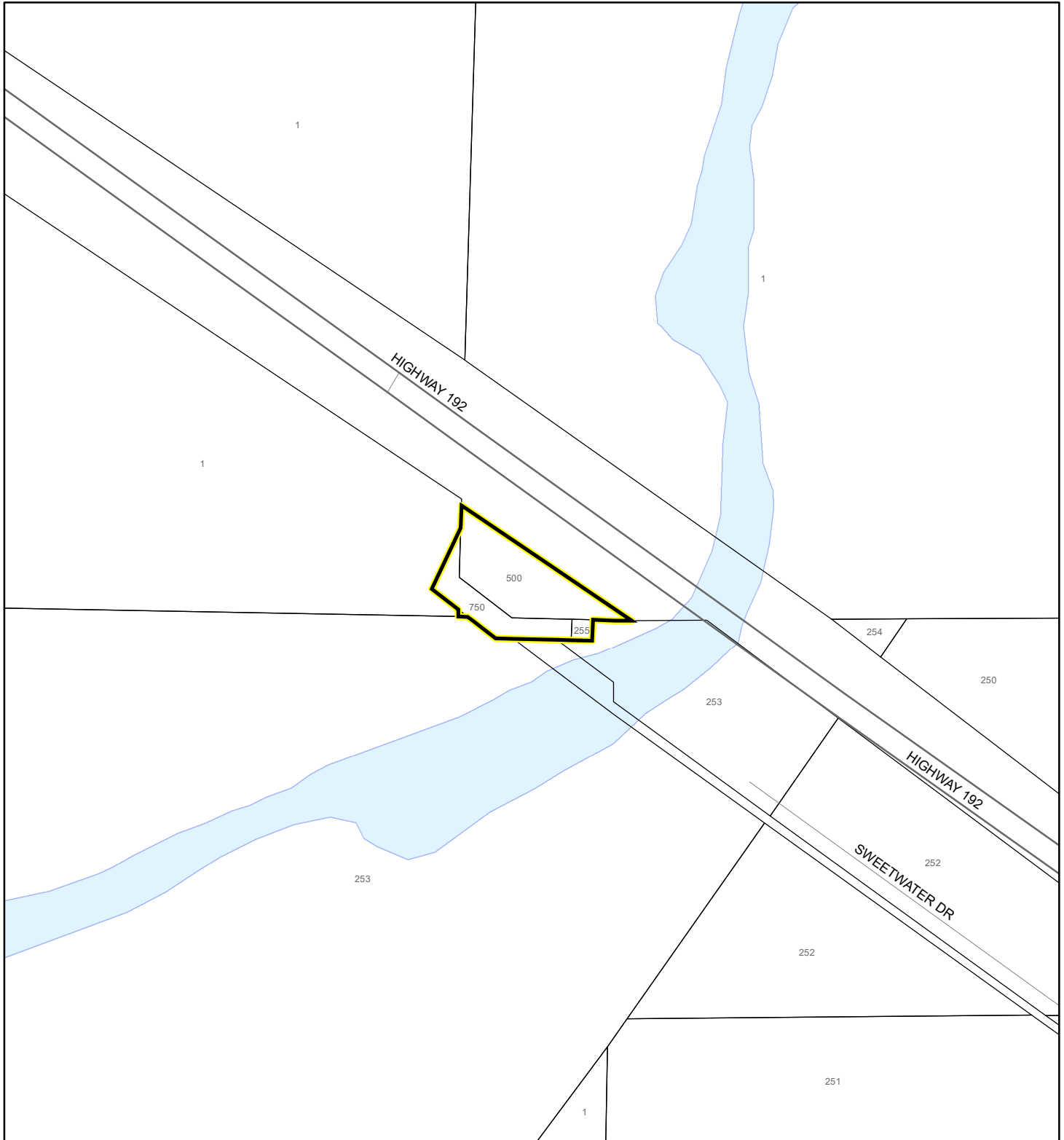
A	AO	X
AE	Open Water	X Protected By Levee
AH	VE	
0.2 Percent Annual Chance Flood Hazard		
0.2 Percent Annual Chance Flood Hazard Contained in Channel		
Subject Property		Parcels



# COASTAL HIGH HAZARD AREA MAP

HOLLY ENTERPRISES OF BREVARD, INC.


19PZ00137



1:4,800 or 1 inch = 400 feet


This map was compiled from recorded documents and does not reflect an actual survey. The Brevard County Board of County Commissioners does not assume responsibility for errors or omissions hereon.

Produced by BoCC - GIS Date: 11/7/2019

 Subject Property

 Parcels

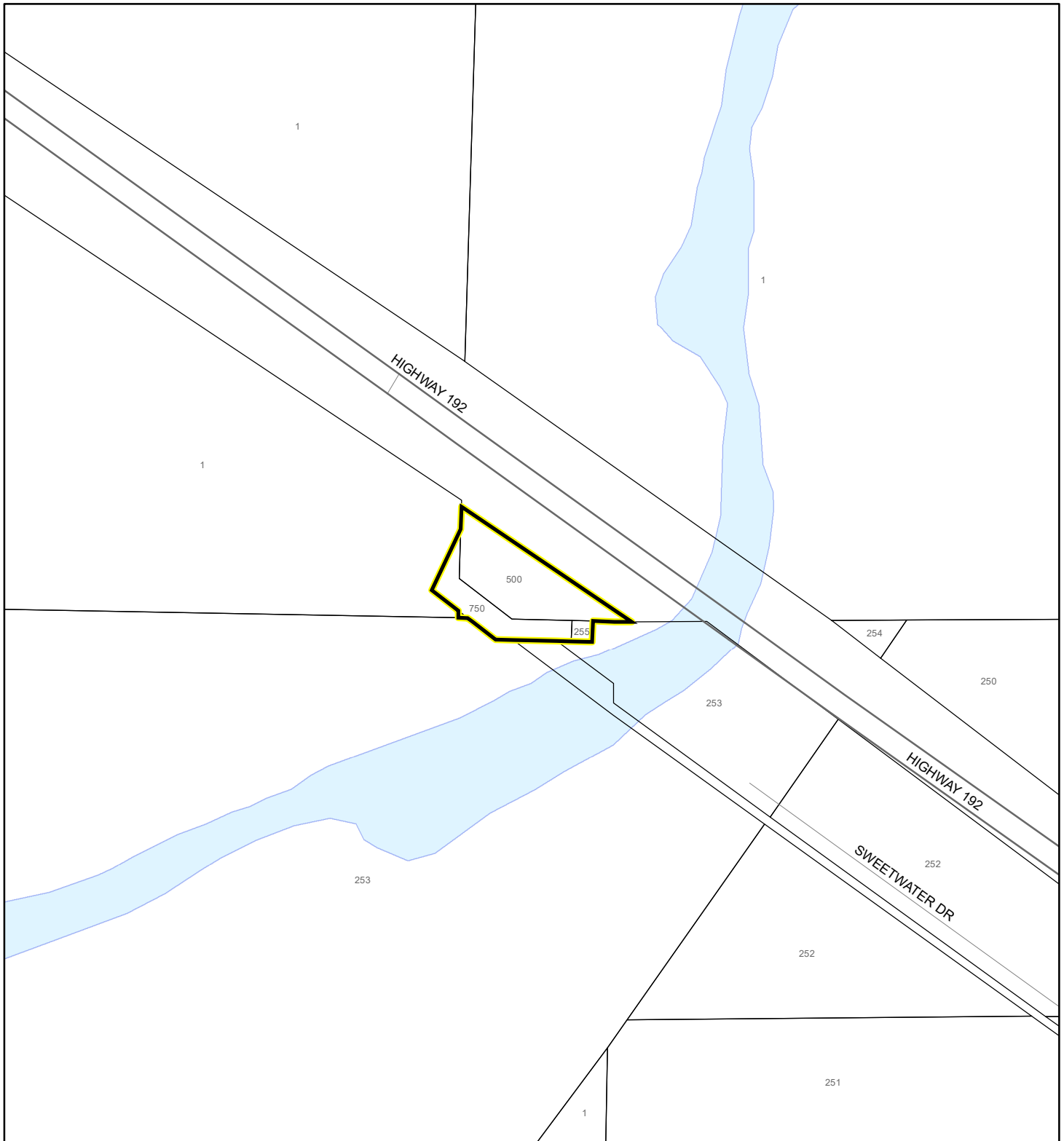
**Coastal High Hazard Area**

 SurgeZoneCat1

# INDIAN RIVER LAGOON SEPTIC OVERLAY MAP

HOLLY ENTERPRISES OF BREVARD, INC.

19PZ00137

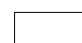


1:4,800 or 1 inch = 400 feet

This map was compiled from recorded documents and does not reflect an actual survey. The Brevard County Board of County Commissioners does not assume responsibility for errors or omissions hereon.

Produced by BoCC - GIS Date: 11/7/2019

 Subject Property

 Parcels

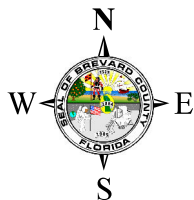
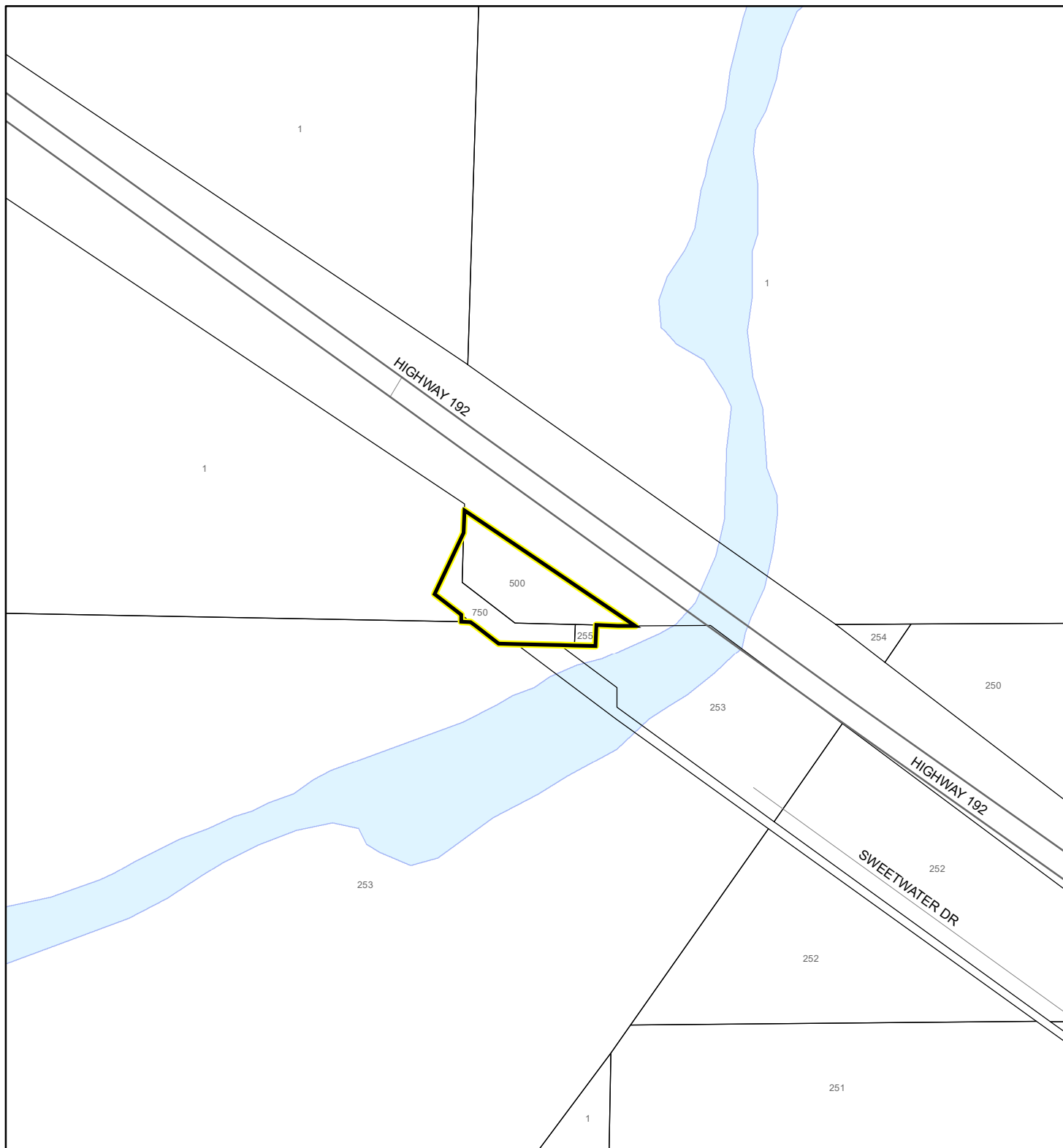
**Septic Overlay**

 40 Meters

 60 Meters

 All Distances

EAGLE NESTS MAP  
HOLLY ENTERPRISES OF BREVARD, INC.  
19PZ00137



1:4,800 or 1 inch = 400 feet

This map was compiled from recorded documents and does not reflect an actual survey. The Brevard County Board of County Commissioners does not assume responsibility for errors or omissions hereon.

Produced by BoCC - GIS Date: 11/7/2019

 Subject Property

 Parcels

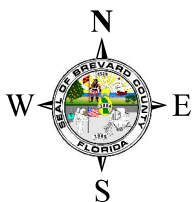
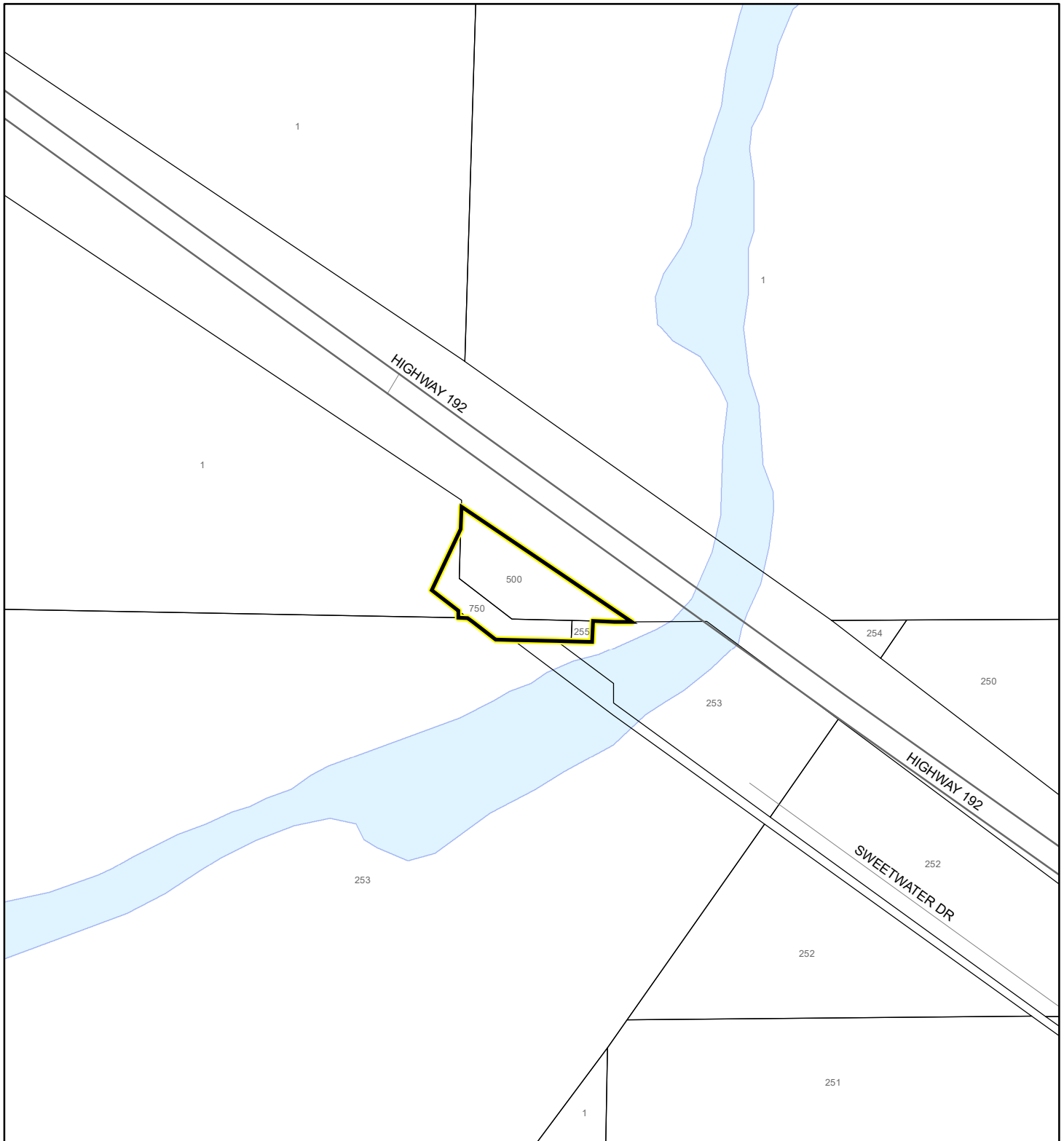


Eagle Nests  
FWS 2010

# SCRUB JAY OCCUPANCY MAP

HOLLY ENTERPRISES OF BREVARD, INC.




19PZ00137



1:4,800 or 1 inch = 400 feet

This map was compiled from recorded documents and does not reflect an actual survey. The Brevard County Board of County Commissioners does not assume responsibility for errors or omissions hereon.

Produced by BoCC - GIS Date: 11/7/2019

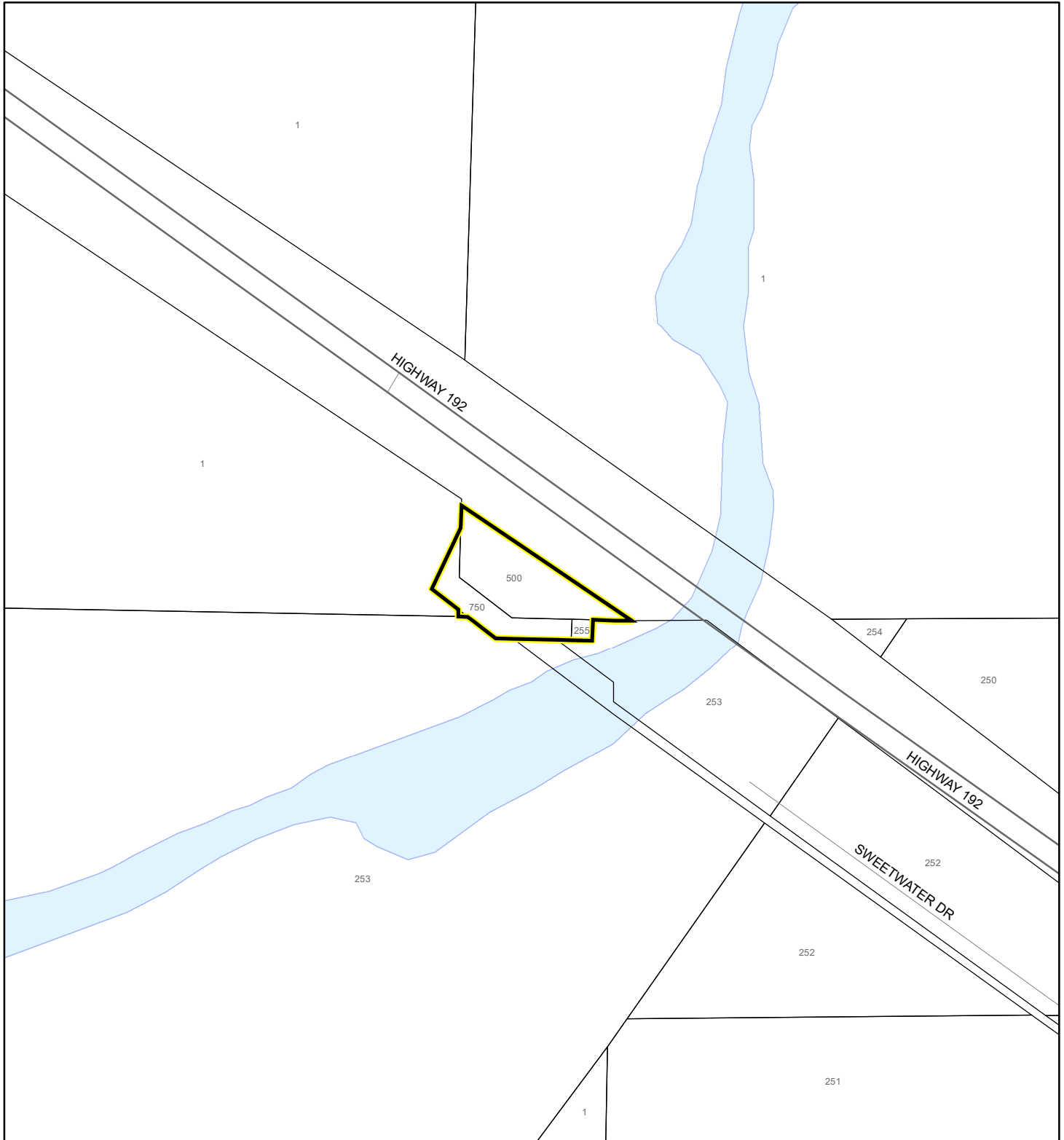
-  Subject Property
-  Parcels
-  Scrub Jay Occupancy



# SJRWMD FLUCCS UPLAND FORESTS - 4000 Series MAP

HOLLY ENTERPRISES OF BREVARD, INC.

19PZ00137

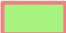





1:4,800 or 1 inch = 400 feet

This map was compiled from recorded documents and does not reflect an actual survey. The Brevard County Board of County Commissioners does not assume responsibility for errors or omissions hereon.

Produced by BoCC - GIS Date: 11/7/2019

## SJRWMD FLUCCS Upland Forests

-  Upland Coniferous Forest - 4100 Series
-  Upland Hardwood Forest - 4200 Series
-  Upland Mixed Forest - 4300 Series
-  Tree Plantations - 4400 Series

 Subject Property  Parcels