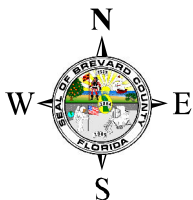
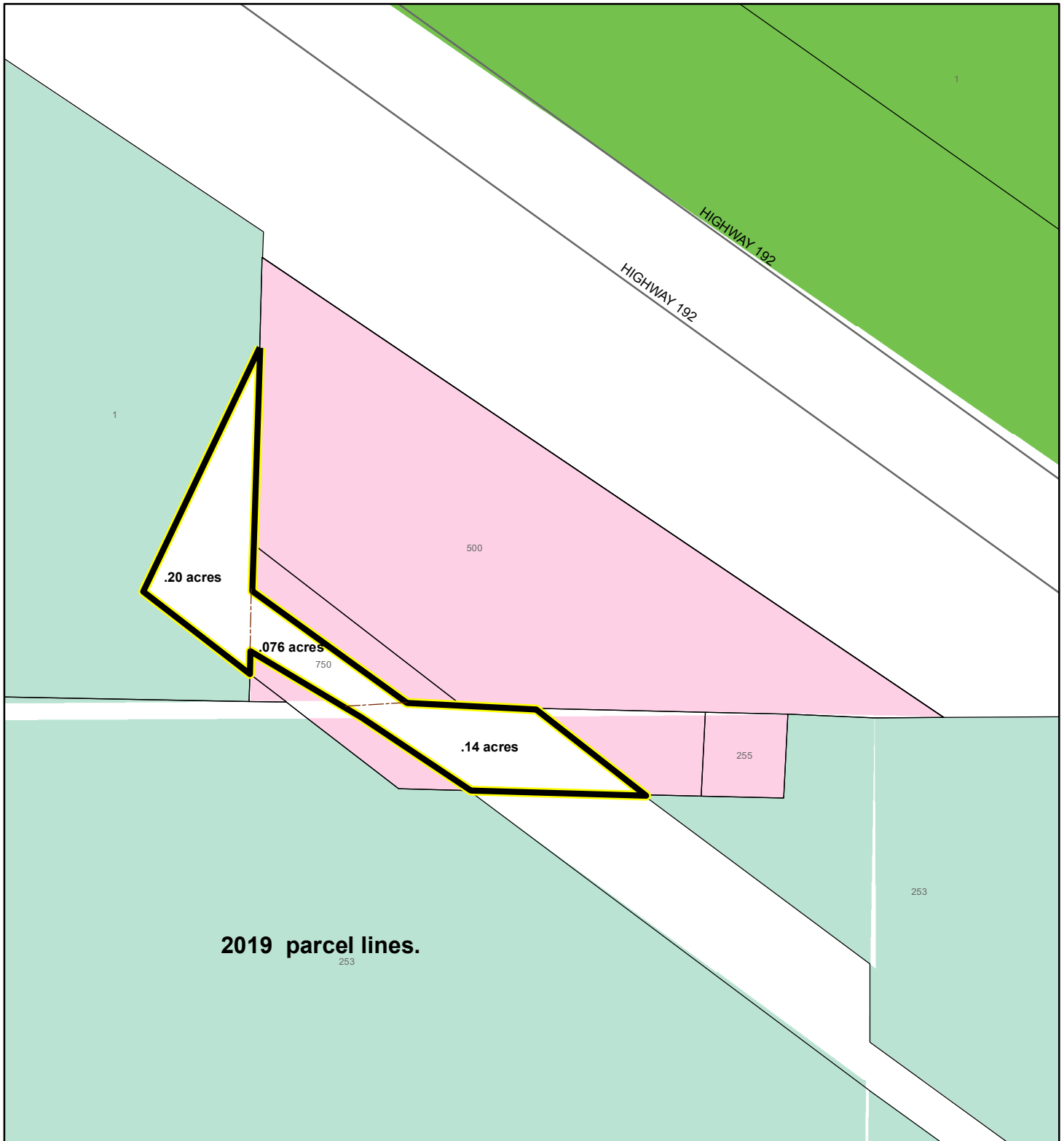




FUTURE LAND USE - Prior to Realignment

HOLLY ENTERPRISES OF BREVARD, INC.



1:1,200 or 1 inch = 100 feet

 Subject Property
 Parcels

This map was compiled from recorded documents and does not reflect an actual survey. The Brevard County Board of County Commissioners does not assume responsibility for errors or omissions hereon.

Produced by BoCC - GIS Date: 12/10/2019