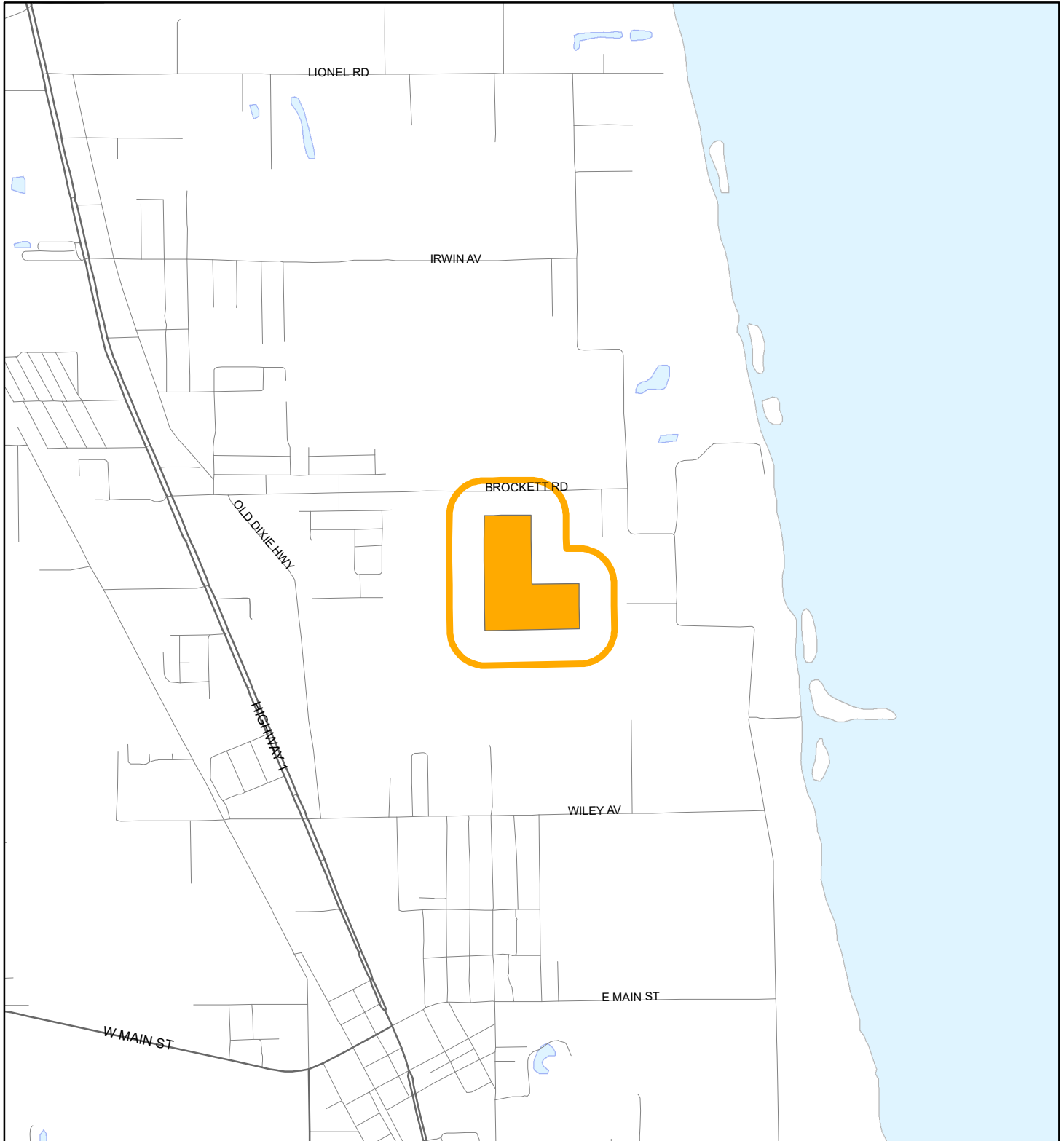


LOCATION MAP

MARION, Paul; LAMATTINA, Kimberly; LOSAT, Kayla; RIPPER, Jessica; KIRK, Ethylmay and Robert
22SS00008 Small Scale Amendment 22S.11





1:24,000 or 1 inch = 2,000 feet

Buffer Distance: 500 feet

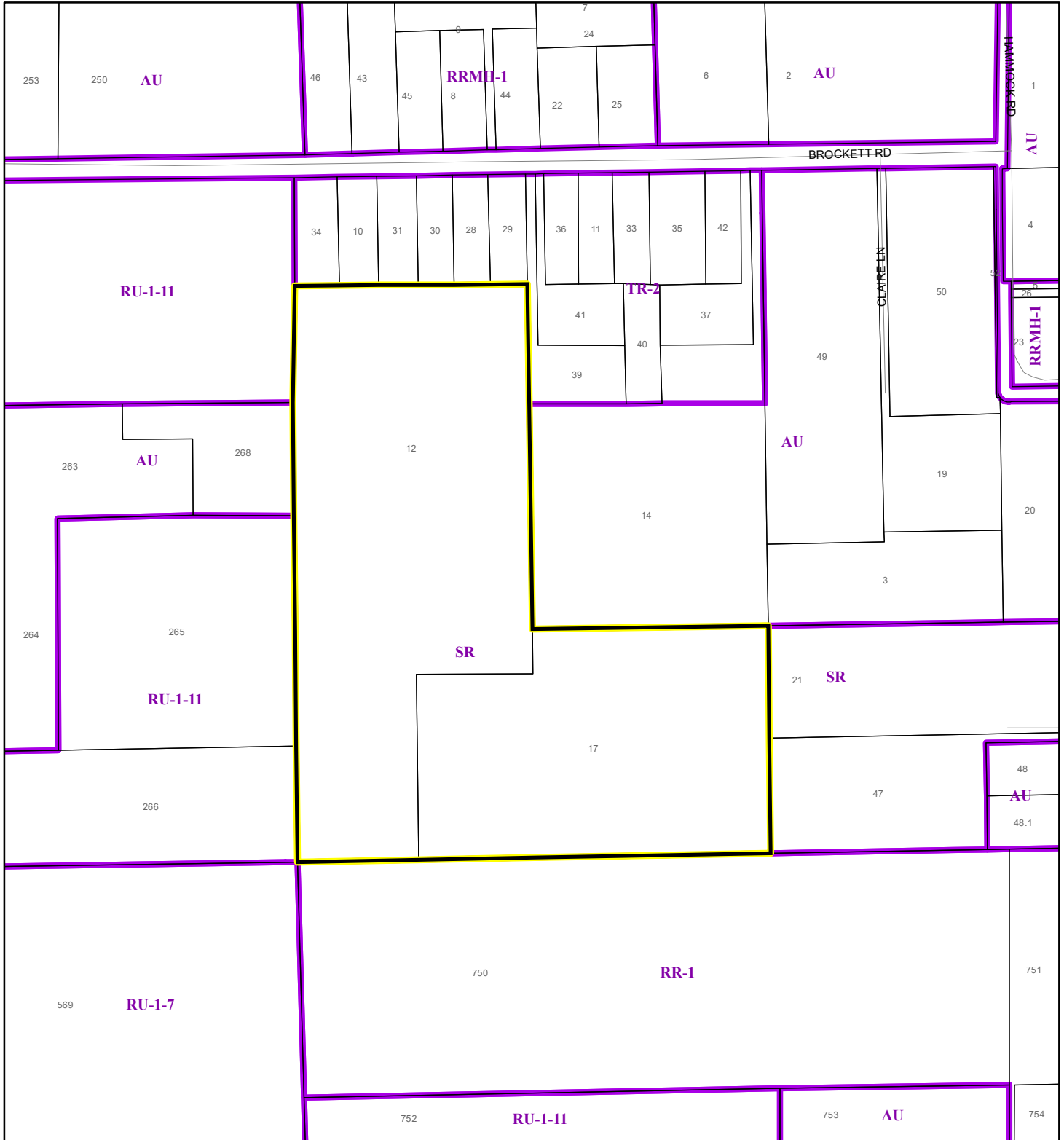
This map was compiled from recorded documents and does not reflect an actual survey. The Brevard County Board of County Commissioners does not assume responsibility for errors or omissions hereon.

Produced by BoCC - GIS Date: 6/13/2022

 Buffer
 Subject Property

ZONING MAP

MARION, Paul; LAMATTINA, Kimberly; LOSAT, Kayla; RIPPER, Jessica; KIRK, Ethylmay and Robert
22SS00008 Small Scale Amendment 22S.11



1:4,800 or 1 inch = 400 feet

This map was compiled from recorded documents and does not reflect an actual survey. The Brevard County Board of County Commissioners does not assume responsibility for errors or omissions hereon.

Produced by BoCC - GIS Date: 6/13/2022

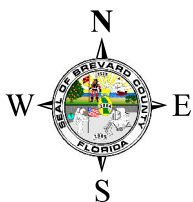
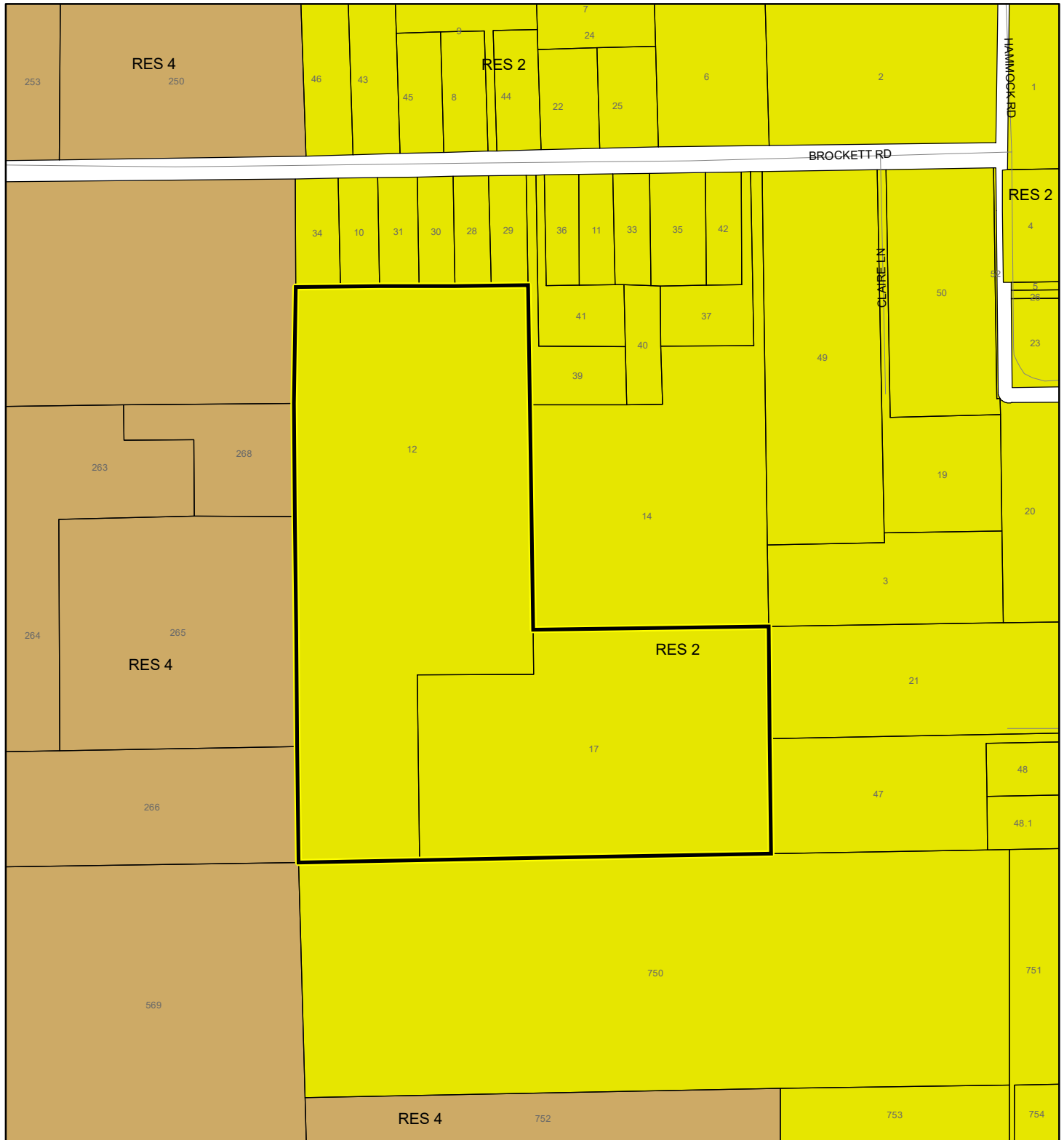
Subject Property

Parcels



Zoning

FUTURE LAND USE MAP

MARION, Paul; LAMATTINA, Kimberly; LOSAT, Kayla; RIPPER, Jessica; KIRK, Ethylmay and Robert
22SS00008 Small Scale Amendment 22S.11



1:4,800 or 1 inch = 400 feet

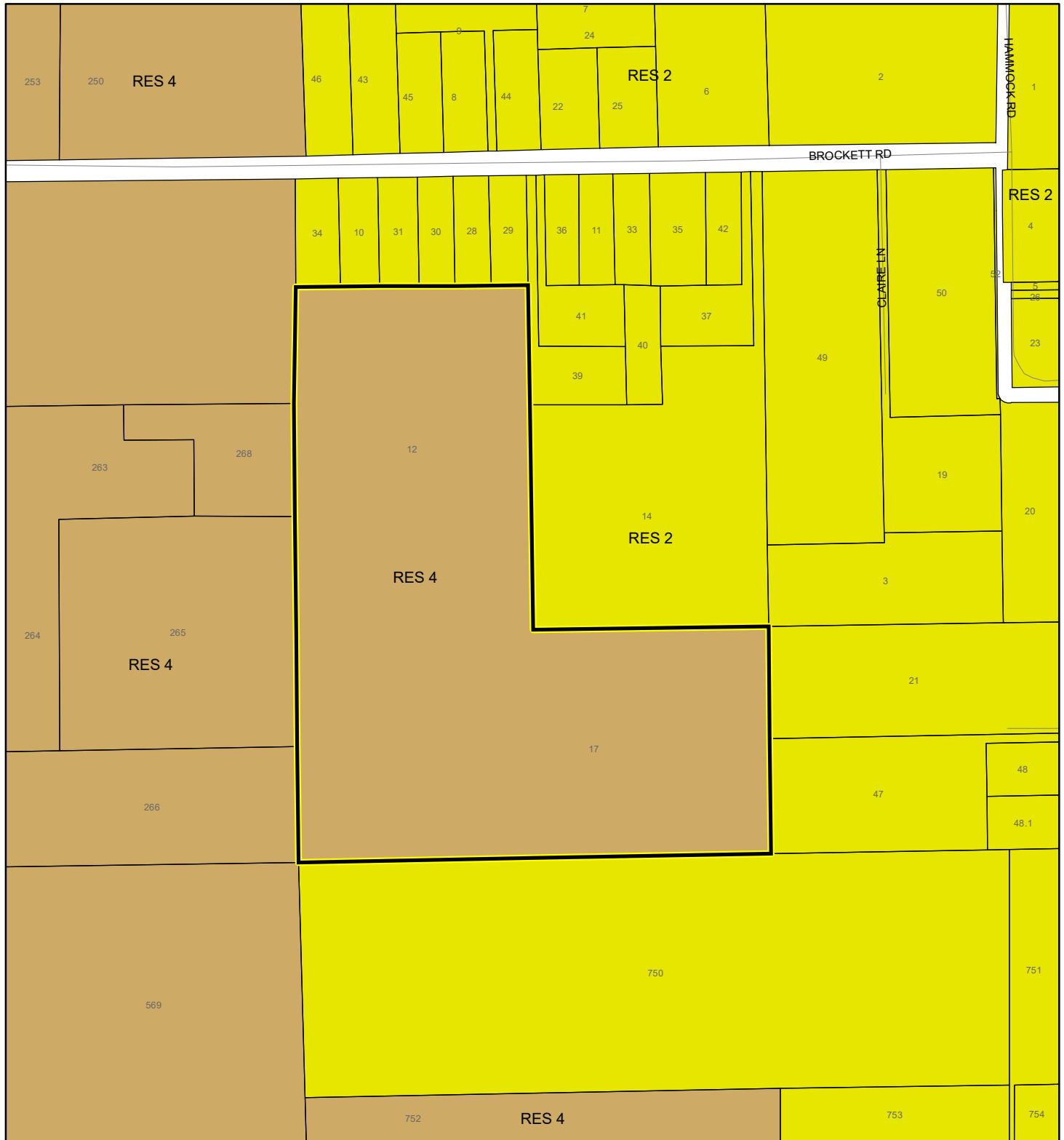
 Subject Property
 Parcels

This map was compiled from recorded documents and does not reflect an actual survey. The Brevard County Board of County Commissioners does not assume responsibility for errors or omissions hereon.



Produced by BoCC - GIS Date: 6/13/2022

PROPOSED FUTURE LAND USE MAP

MARION, Paul; LAMATTINA, Kimberly; LOSAT, Kayla; RIPPER, Jessica; KIRK, Ethylmay and Robert
22SS00008 Small Scale Amendment 22S.11



1:4,800 or 1 inch = 400 feet

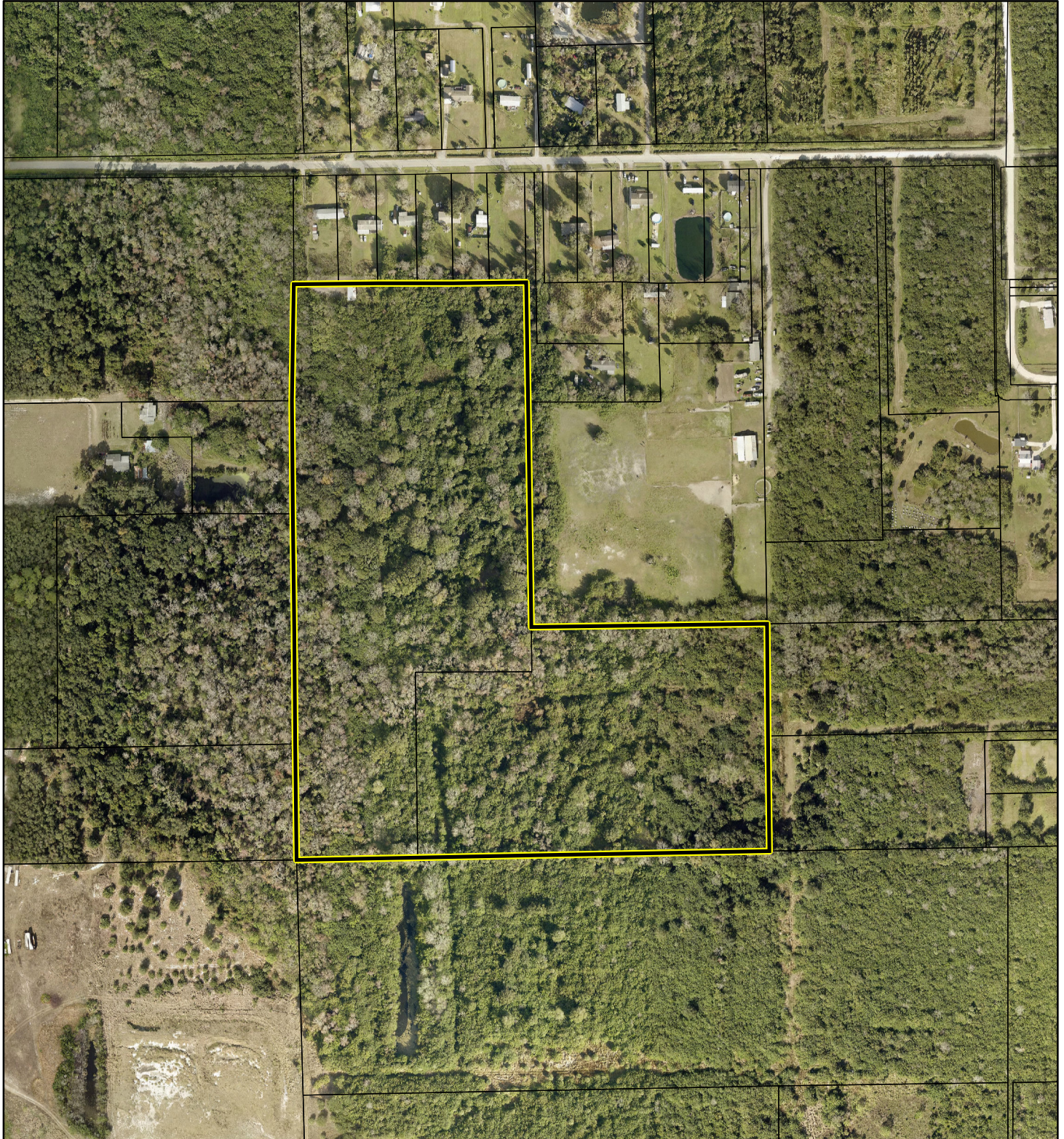
 Subject Property
 Parcels

This map was compiled from recorded documents and does not reflect an actual survey. The Brevard County Board of County Commissioners does not assume responsibility for errors or omissions hereon.

Produced by BoCC - GIS Date: 6/13/2022

AERIAL MAP

MARION, Paul; LAMATTINA, Kimberly; LOSAT, Kayla; RIPPER, Jessica; KIRK, Ethylmay and Robert
22SS00008 Small Scale Amendment 22S.11




1:4,800 or 1 inch = 400 feet

PHOTO YEAR: 2021

This map was compiled from recorded documents and does not reflect an actual survey. The Brevard County Board of County Commissioners does not assume responsibility for errors or omissions hereon.

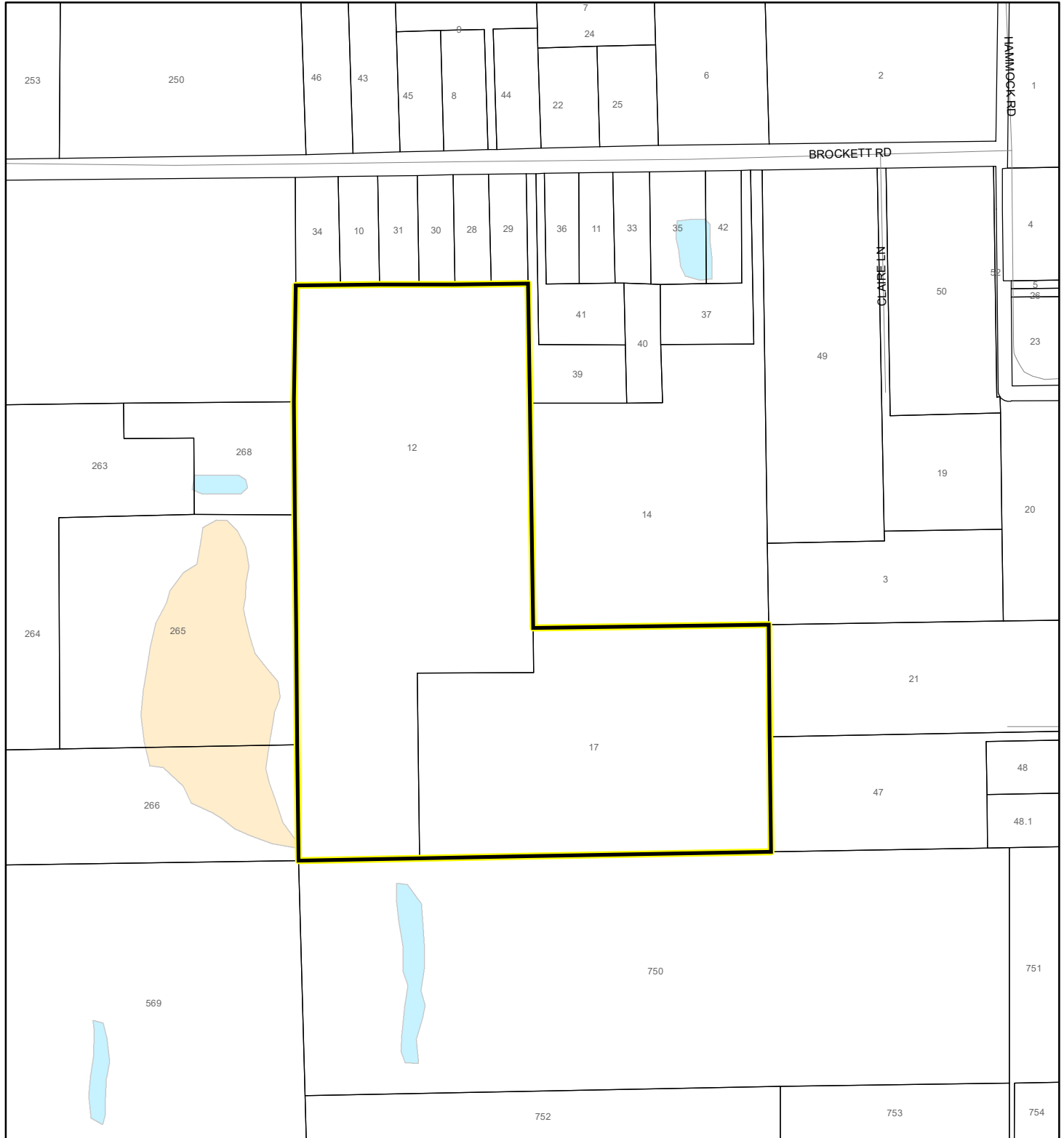
Produced by BoCC - GIS Date: 6/13/2022

 Subject Property

 Parcels

NWI WETLANDS MAP

MARION, Paul; LAMATTINA, Kimberly; LOSAT, Kayla; RIPPER, Jessica; KIRK, Ethylmay and Robert
22SS00008 Small Scale Amendment 22S.11







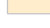
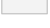

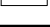


1:4,800 or 1 inch = 400 feet

This map was compiled from recorded documents and does not reflect an actual survey. The Brevard County Board of County Commissioners does not assume responsibility for errors or omissions hereon.

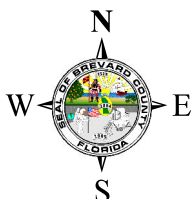
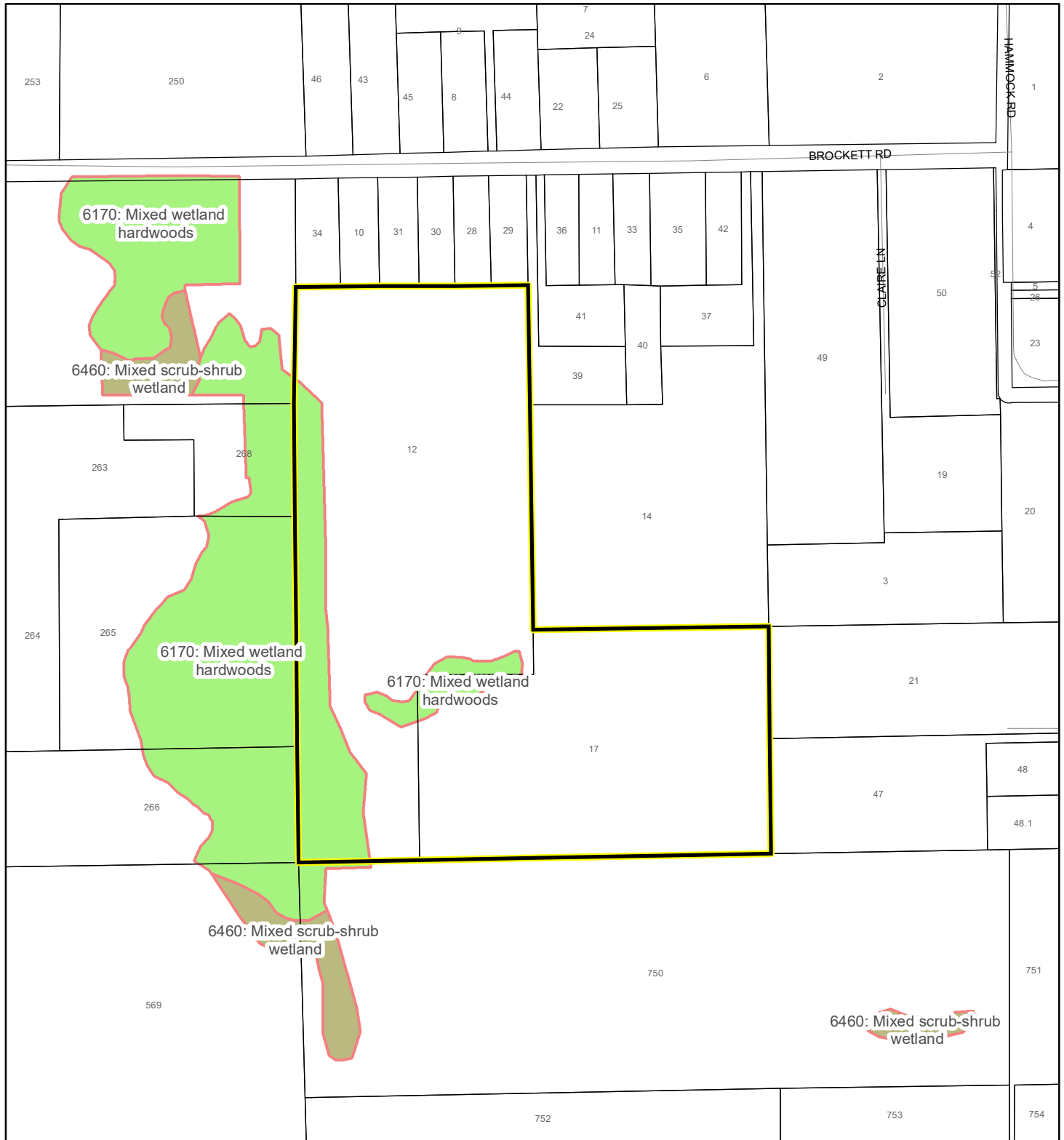
Produced by BoCC - GIS Date: 6/13/2022

National Wetlands Inventory (NWI)

 Estuarine and Marine Deepwater	 Freshwater Pond
 Estuarine and Marine Wetland	 Lake
 Freshwater Emergent Wetland	 Other
 Freshwater Forested/Shrub Wetland	 Riverine
	 Subject Property
	 Parcels

SJRWMD FLUCCS WETLANDS - 6000 Series MAP

MARION, Paul; LAMATTINA, Kimberly; LOSAT, Kayla; RIPPER, Jessica; KIRK, Ethylmay and Robert
22SS00008 Small Scale Amendment 22S.11



1:4,800 or 1 inch = 400 feet

This map was compiled from recorded documents and does not reflect an actual survey. The Brevard County Board of County Commissioners does not assume responsibility for errors or omissions hereon.

Produced by BoCC - GIS Date: 6/13/2022

SJRWMD FLUCCS WETLANDS

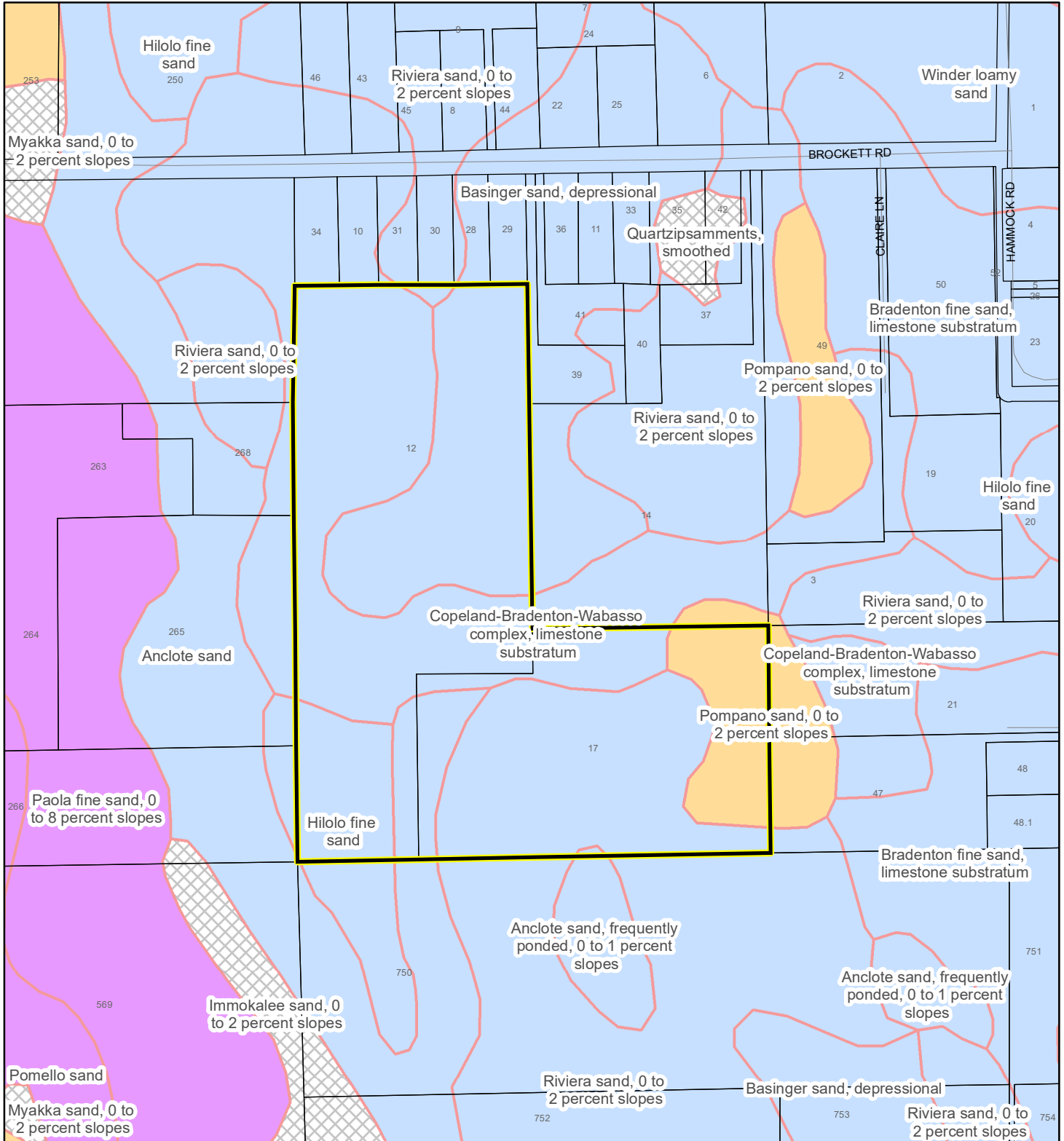
- Wetland Hardwood Forests - Series 6100
- Wetland Coniferous Forest - Series 6200
- Wetland Forested Mixed - Series 6300
- Vegetated Non-Forested Wetlands - Series 6400
- Non-Vegetated Wetland - Series 6500

Subject Property

Parcels

USDA SCSSS SOILS MAP

MARION, Paul; LAMATTINA, Kimberly; LOSAT, Kayla; RIPPER, Jessica; KIRK, Ethylmay and Robert
22SS00008 Small Scale Amendment 22S.11



1:4,800 or 1 inch = 400 feet

This map was compiled from recorded documents and does not reflect an actual survey. The Brevard County Board of County Commissioners does not assume responsibility for errors or omissions hereon.

Produced by BoCC - GIS Date: 6/13/2022

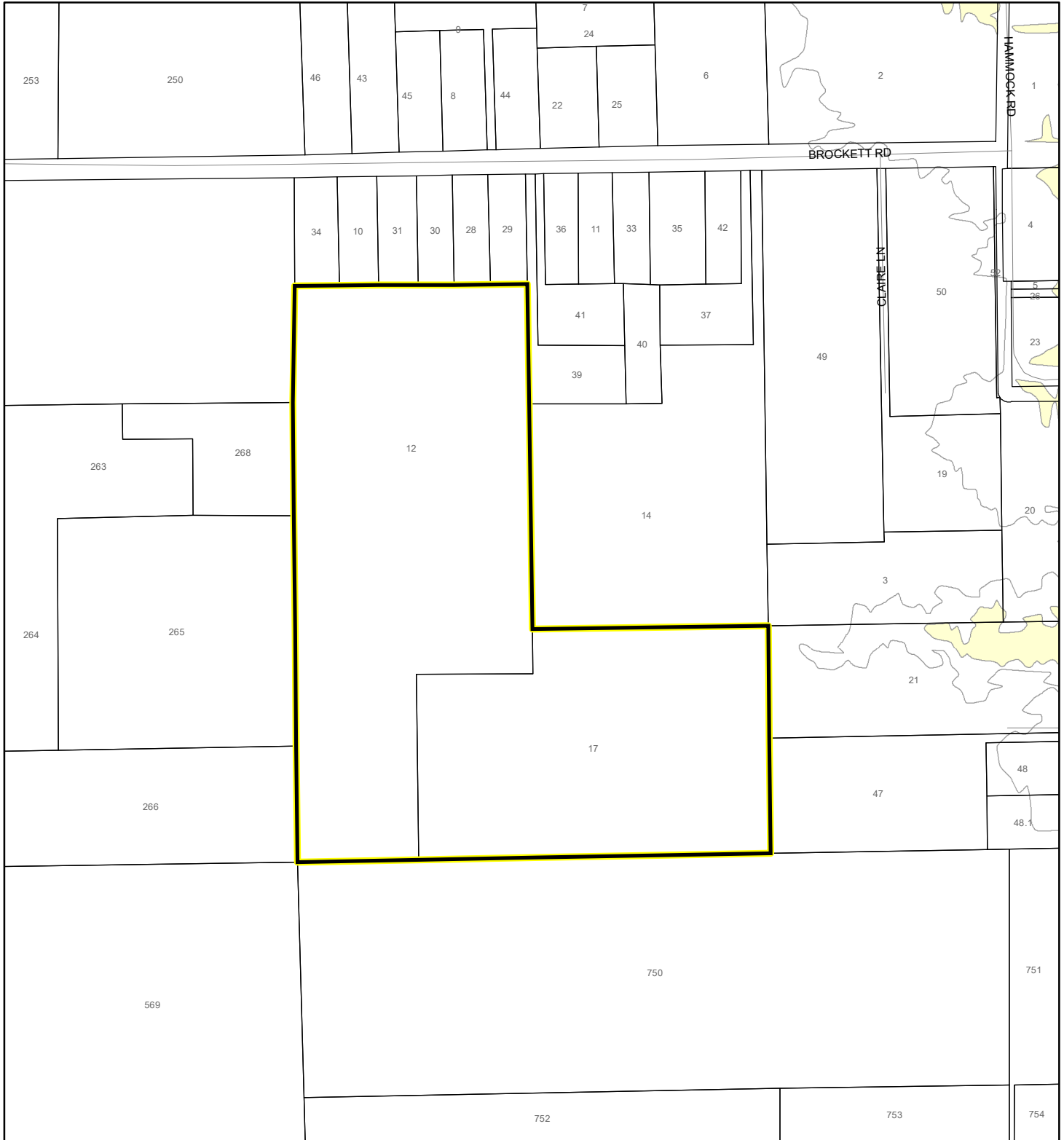
USDA SCSSS Soils

- Aquifer and Hydric
- Aquifer
- Hydric
- None

- Subject Property
- Parcels

FEMA FLOOD ZONES MAP

MARION, Paul; LAMATTINA, Kimberly; LOSAT, Kayla; RIPPER, Jessica; KIRK, Ethylmay and Robert
22SS00008 Small Scale Amendment 22S.11



1:4,800 or 1 inch = 400 feet

This map was compiled from recorded documents and does not reflect an actual survey. The Brevard County Board of County Commissioners does not assume responsibility for errors or omissions hereon.

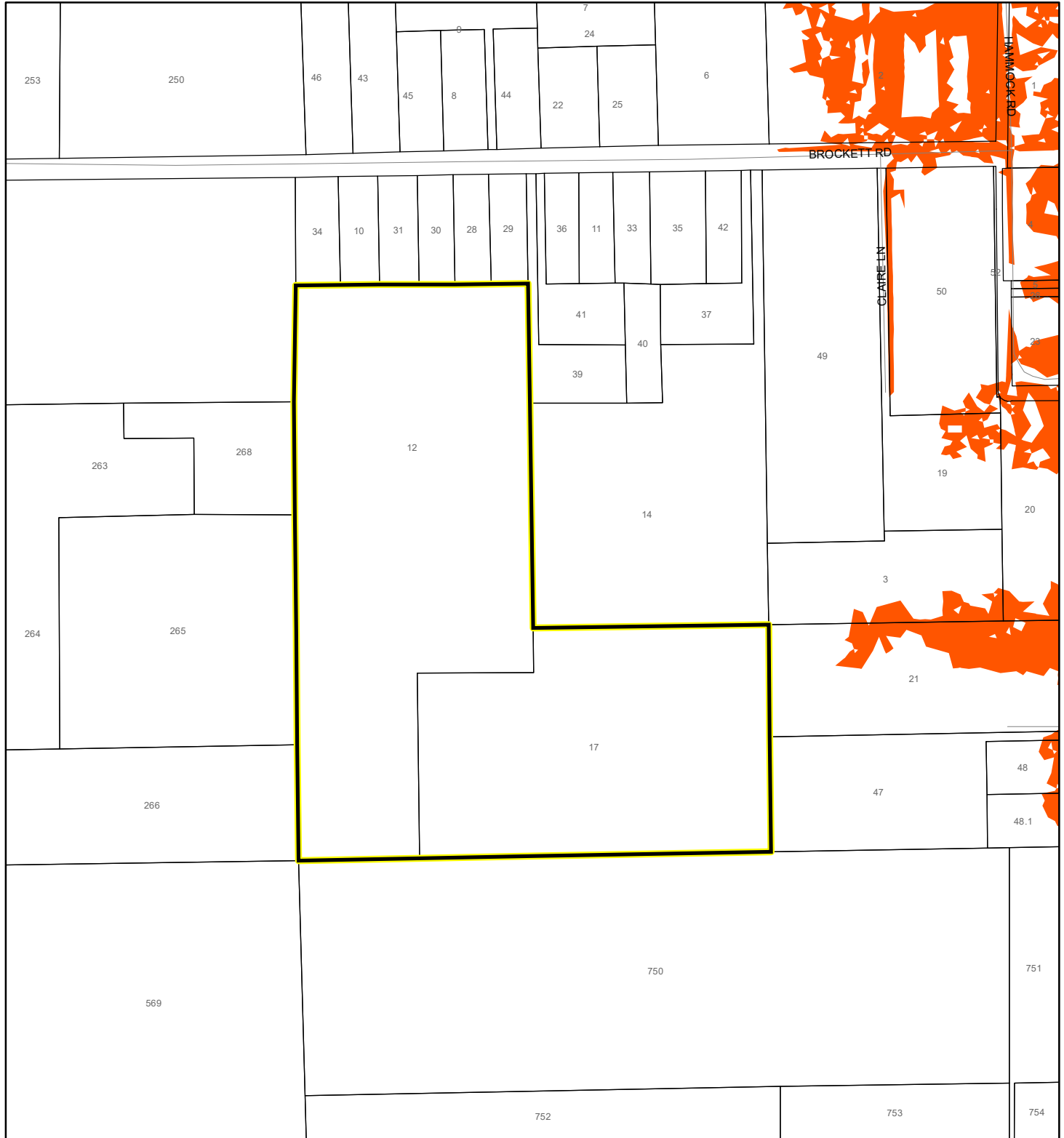
Produced by BoCC - GIS Date: 6/13/2022

FEMA Flood Zones

 A	 AO	 X
 AE	 Open Water	
 AH	 VE	
 Subject Property	 Parcels	

COASTAL HIGH HAZARD AREA MAP

MARION, Paul; LAMATTINA, Kimberly; LOSAT, Kayla; RIPPER, Jessica; KIRK, Ethylmay and Robert
22SS00008 Small Scale Amendment 22S.11



1:4,800 or 1 inch = 400 feet


This map was compiled from recorded documents and does not reflect an actual survey. The Brevard County Board of County Commissioners does not assume responsibility for errors or omissions hereon.

Produced by BoCC - GIS Date: 6/13/2022

 Subject Property

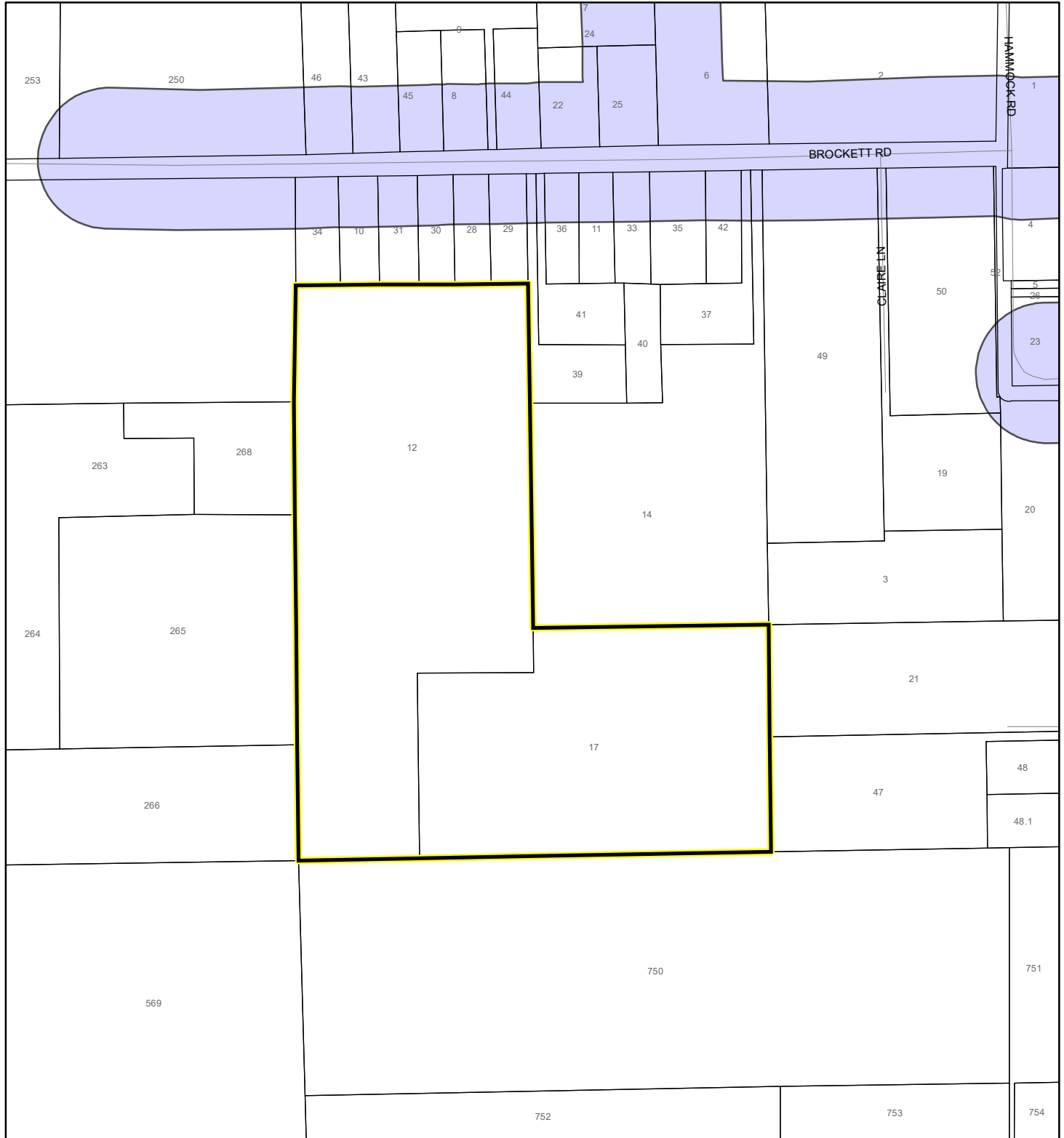
 Parcels

Coastal High Hazard Area

 SurgeZoneCat1

INDIAN RIVER LAGOON SEPTIC OVERLAY MAP

MARION, Paul; LAMATTINA, Kimberly; LOSAT, Kayla; RIPPER, Jessica; KIRK, Ethylmay and Robert
22SS00008 Small Scale Amendment 22S.11



1:4,800 or 1 inch = 400 feet

This map was compiled from recorded documents and does not reflect an actual survey. The Brevard County Board of County Commissioners does not assume responsibility for errors or omissions hereon.

Produced by BoCC - GIS Date: 6/13/2022

 Subject Property

 Parcels

Septic Overlay

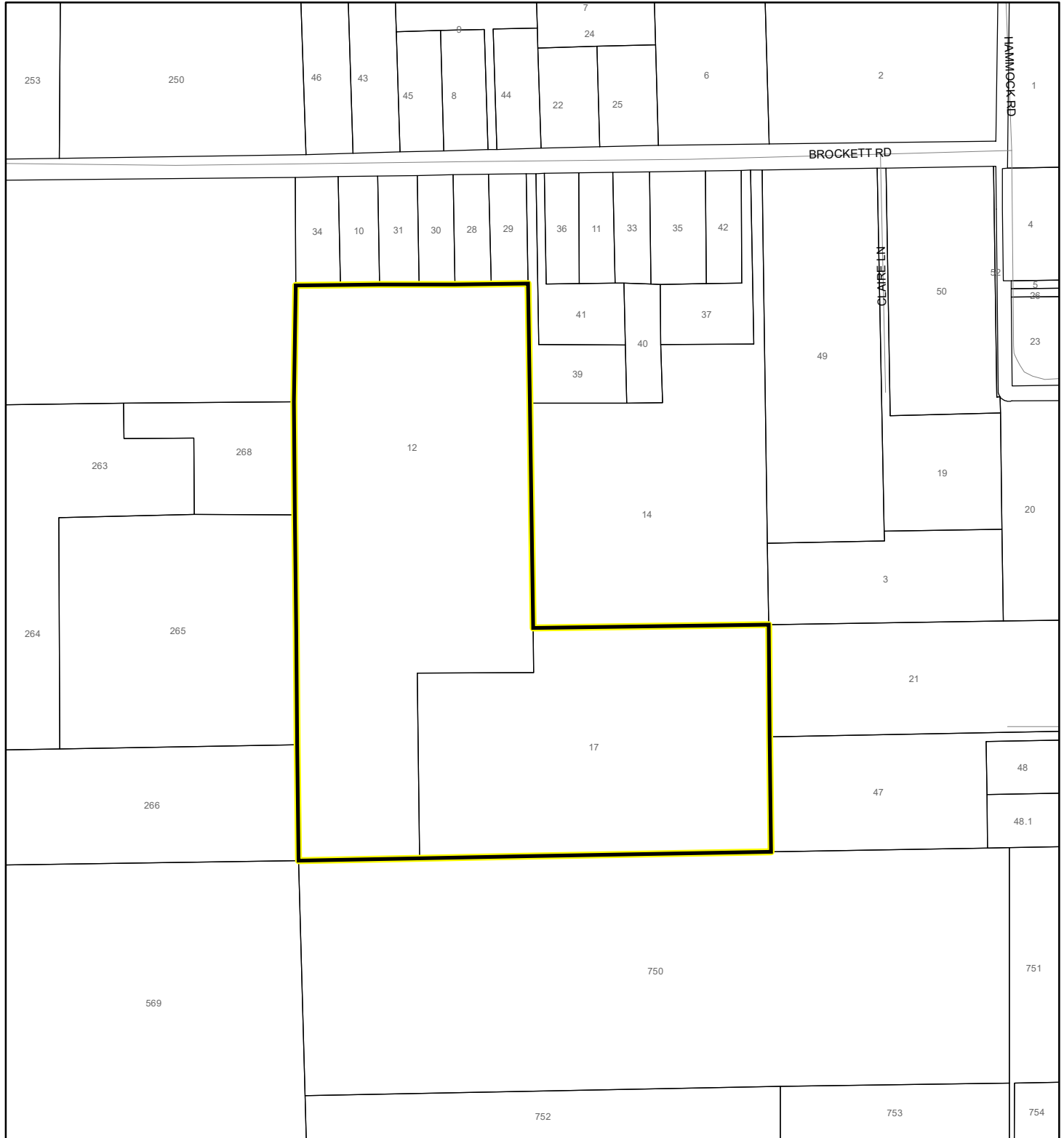
 40 Meters

 60 Meters

 All Distances

EAGLE NESTS MAP

MARION, Paul; LAMATTINA, Kimberly; LOSAT, Kayla; RIPPER, Jessica; KIRK, Ethylmay and Robert
22SS00008 Small Scale Amendment 22S.11




1:4,800 or 1 inch = 400 feet

This map was compiled from recorded documents and does not reflect an actual survey. The Brevard County Board of County Commissioners does not assume responsibility for errors or omissions hereon.

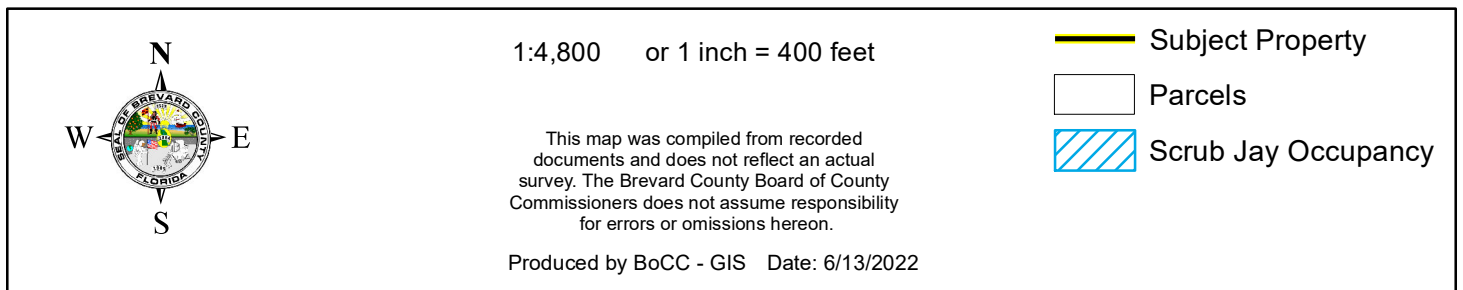
Produced by BoCC - GIS Date: 6/13/2022

 Subject Property

 Parcels

 Eagle Nests
FWS 2010

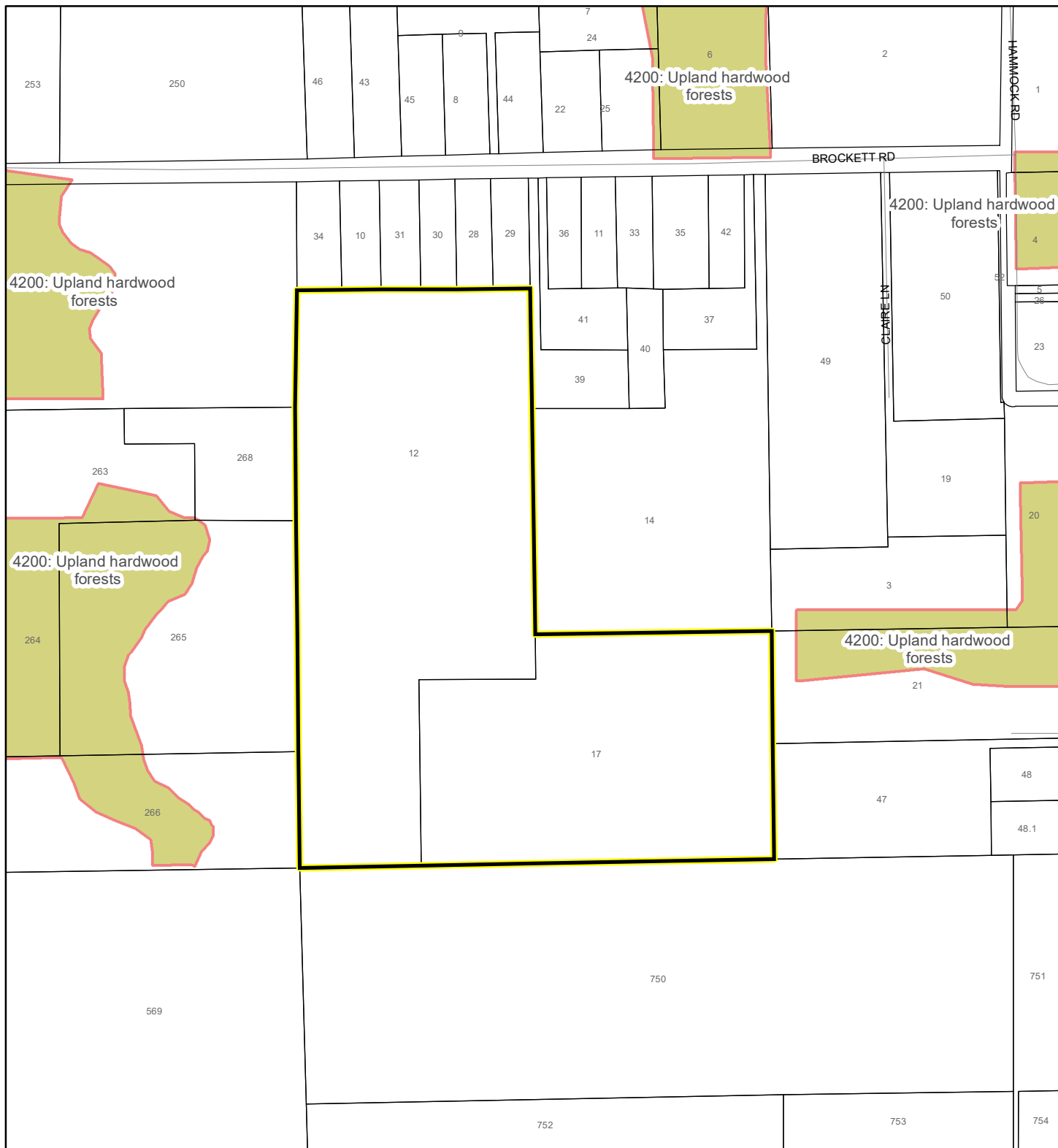
MARION, Paul; LAMATTINA, Kimberly; LOSAT, Kayla; RIPPER, Jessica; KIRK, Ethylmay and Robert
22SS00008 Small Scale Amendment 22S.11



SJRWMD FLUCCS UPLAND FORESTS - 4000 Series MAP

MARION, Paul; LAMATTINA, Kimberly; LOSAT, Kayla; RIPPER, Jessica; KIRK, Ethylmay and Robert

22SS00008 Small Scale Amendment 22S.11







1:4,800 or 1 inch = 400 feet

This map was compiled from recorded documents and does not reflect an actual survey. The Brevard County Board of County Commissioners does not assume responsibility for errors or omissions hereon.

Produced by BoCC - GIS Date: 6/13/2022

SJRWMD FLUCCS Upland Forests

-  Upland Coniferous Forest - 4100 Series
-  Upland Hardwood Forest - 4200 Series
-  Upland Mixed Forest - 4300 Series
-  Tree Plantations - 4400 Series

 Subject Property Parcels