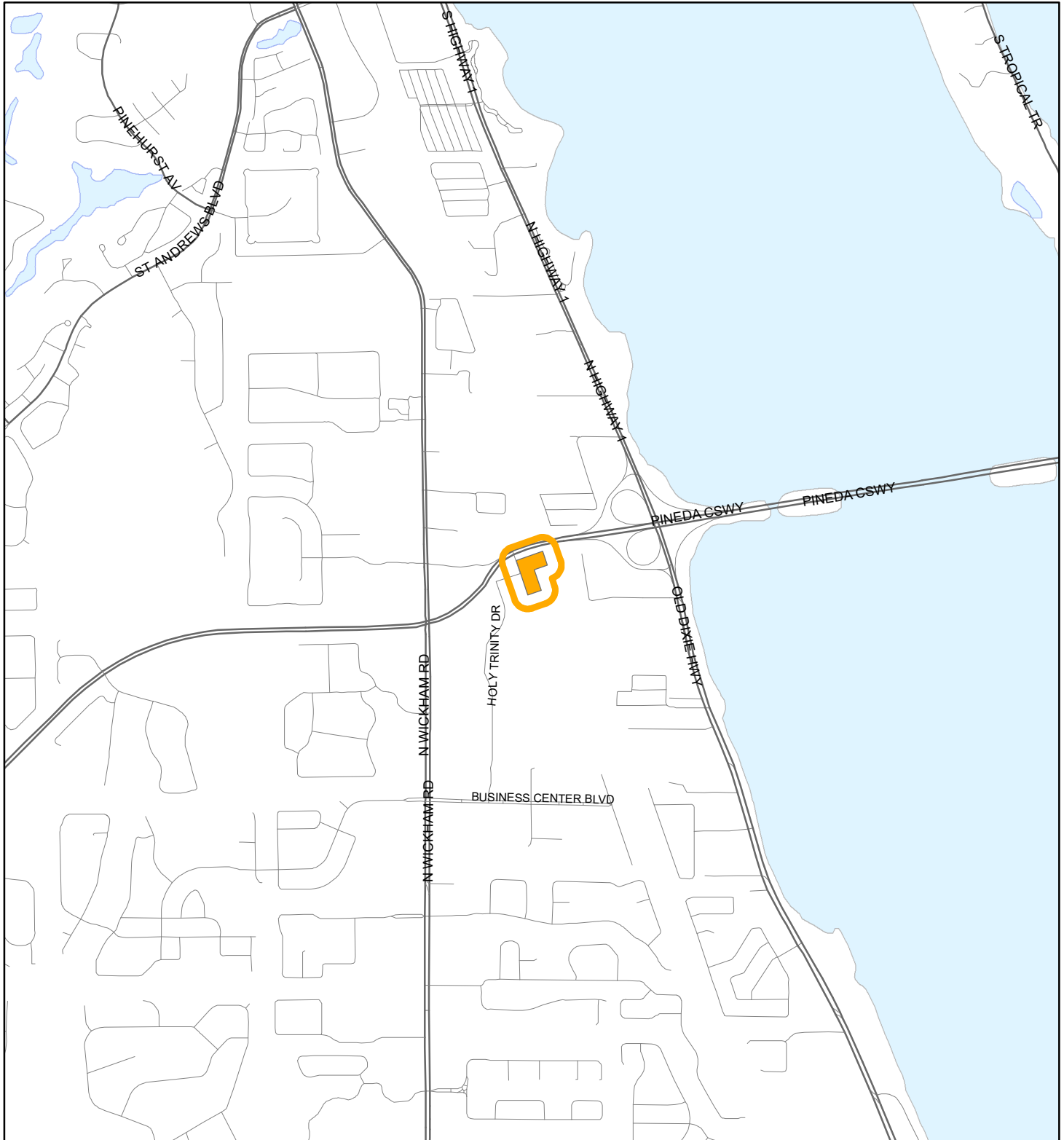


LOCATION MAP

BREVARD COUNTY

22V00019



1:24,000 or 1 inch = 2,000 feet

Buffer Distance: 200 feet

This map was compiled from recorded documents and does not reflect an actual survey. The Brevard County Board of County Commissioners does not assume responsibility for errors or omissions hereon.

Produced by BoCC - GIS Date: 6/13/2022

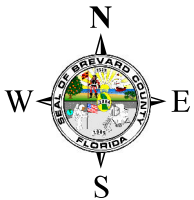
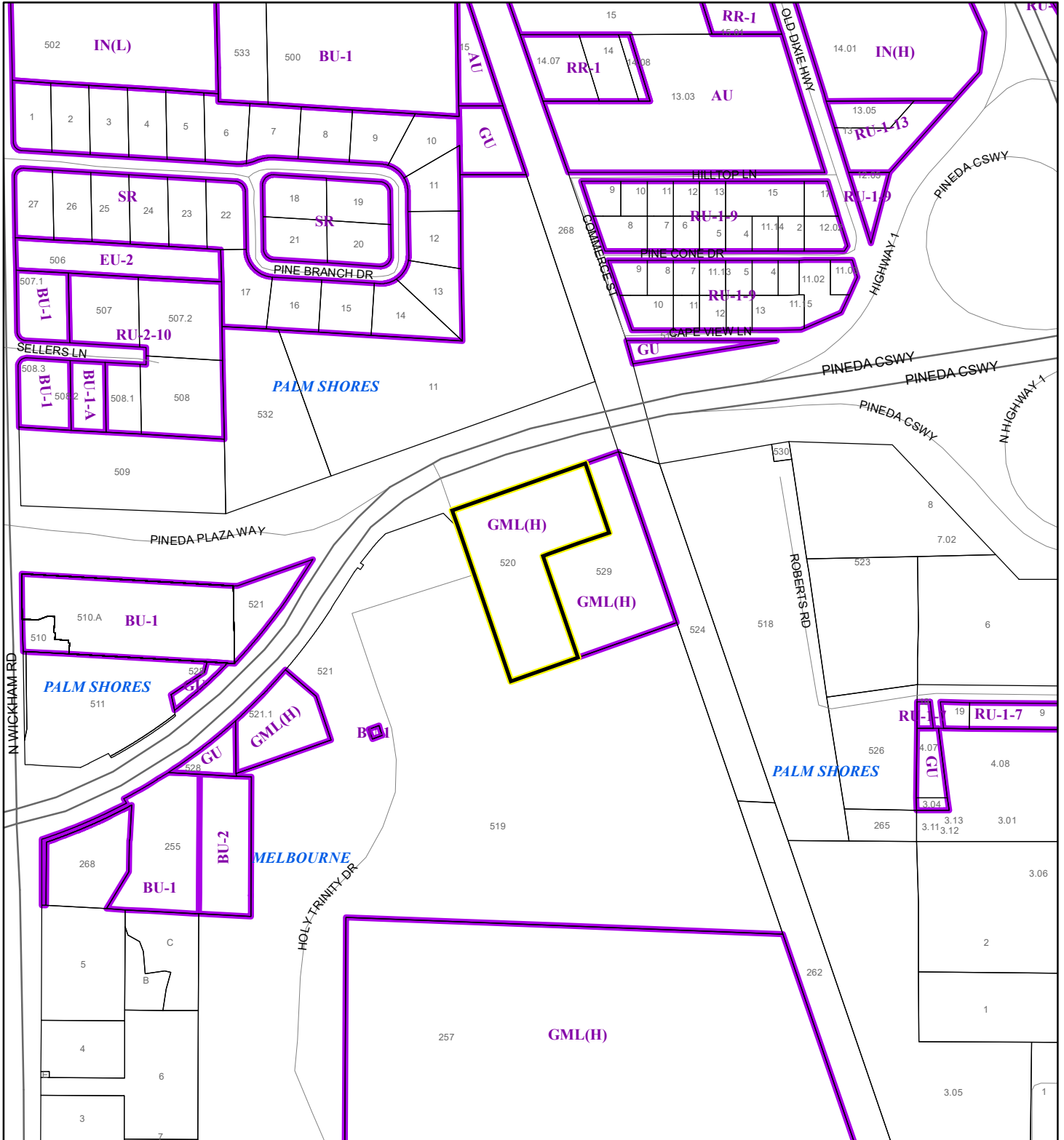
 Buffer

 Subject Property

ZONING MAP

BREVARD COUNTY

22V00019



1:4,800 or 1 inch = 400 feet

This map was compiled from recorded documents and does not reflect an actual survey. The Brevard County Board of County Commissioners does not assume responsibility for errors or omissions hereon.

Produced by BoCC - GIS Date: 6/13/2022

Subject Property

Parcels

Zoning

AERIAL MAP

BREVARD COUNTY

22V00019



1:1,200 or 1 inch = 100 feet

PHOTO YEAR: 2021

This map was compiled from recorded documents and does not reflect an actual survey. The Brevard County Board of County Commissioners does not assume responsibility for errors or omissions hereon.

Produced by BoCC - GIS Date: 6/13/2022

 Subject Property

 Parcels