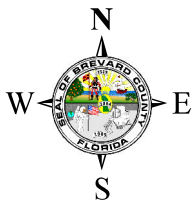
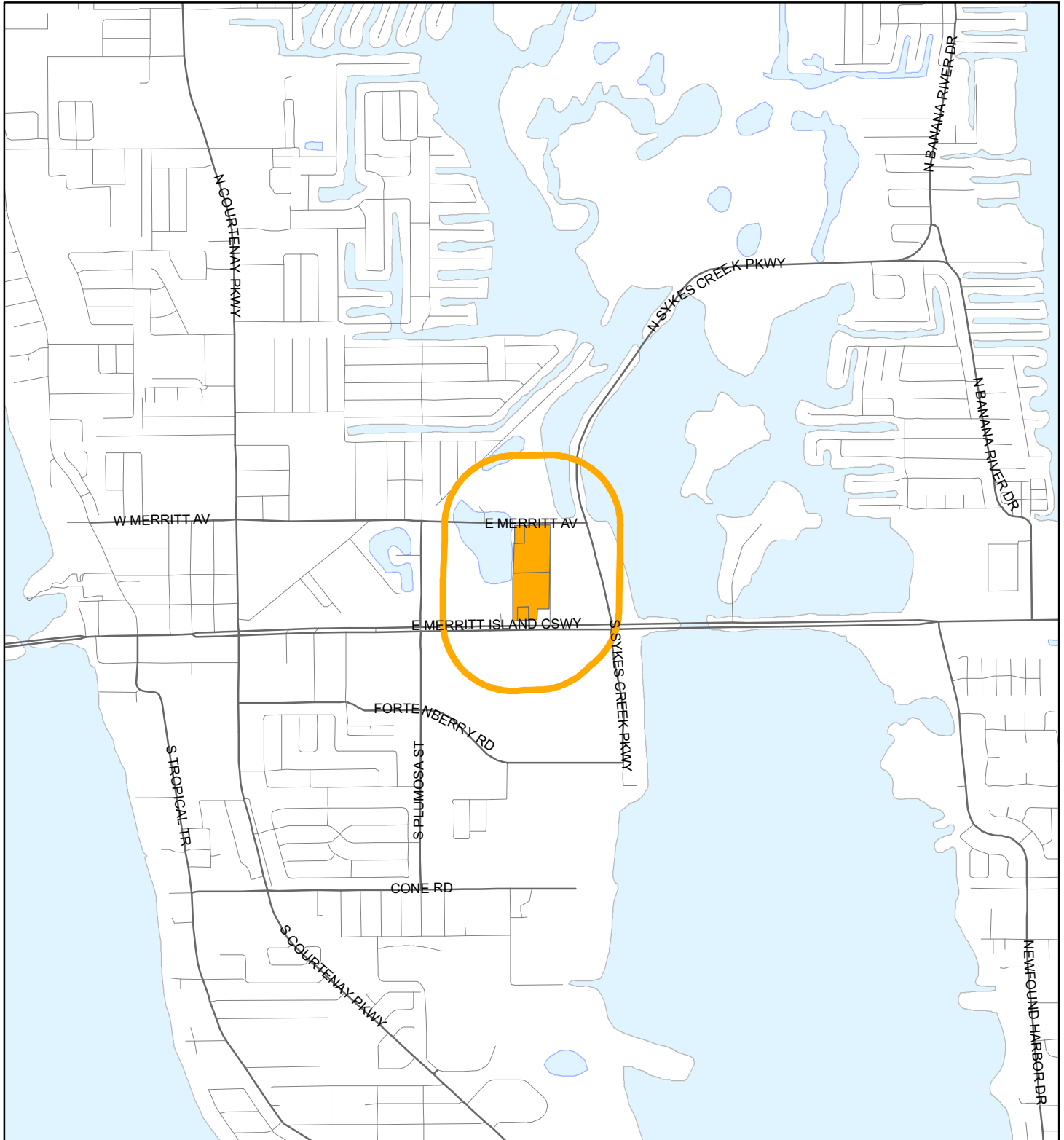


LOCATION MAP

HEALTH FIRST INC., AND HEALTH FIRST SHARED SERVICES, INC.

22PUD00001



1:24,000 or 1 inch = 2,000 feet

Buffer Distance: 1000 feet

This map was compiled from recorded documents and does not reflect an actual survey. The Brevard County Board of County Commissioners does not assume responsibility for errors or omissions hereon.

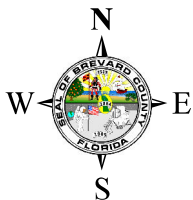
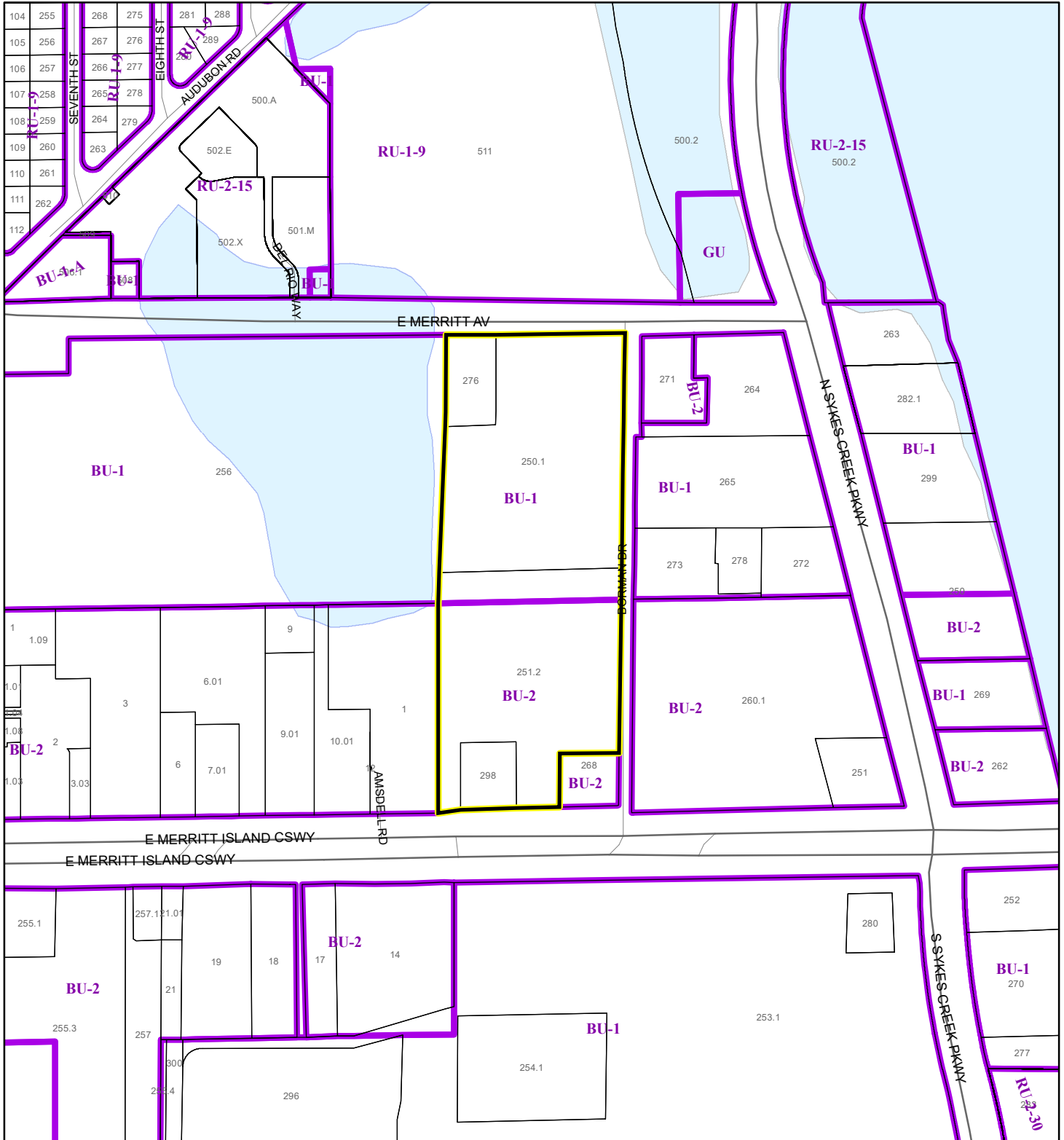
Produced by BoCC - GIS Date: 4/19/2022

Buffer
Subject Property

ZONING MAP

HEALTH FIRST INC., AND HEALTH FIRST SHARED SERVICES, INC.


22PUD00001



1:4,800 or 1 inch = 400 feet

This map was compiled from recorded documents and does not reflect an actual survey. The Brevard County Board of County Commissioners does not assume responsibility for errors or omissions hereon.

Produced by BoCC - GIS Date: 4/19/2022

 Subject Property

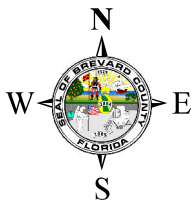
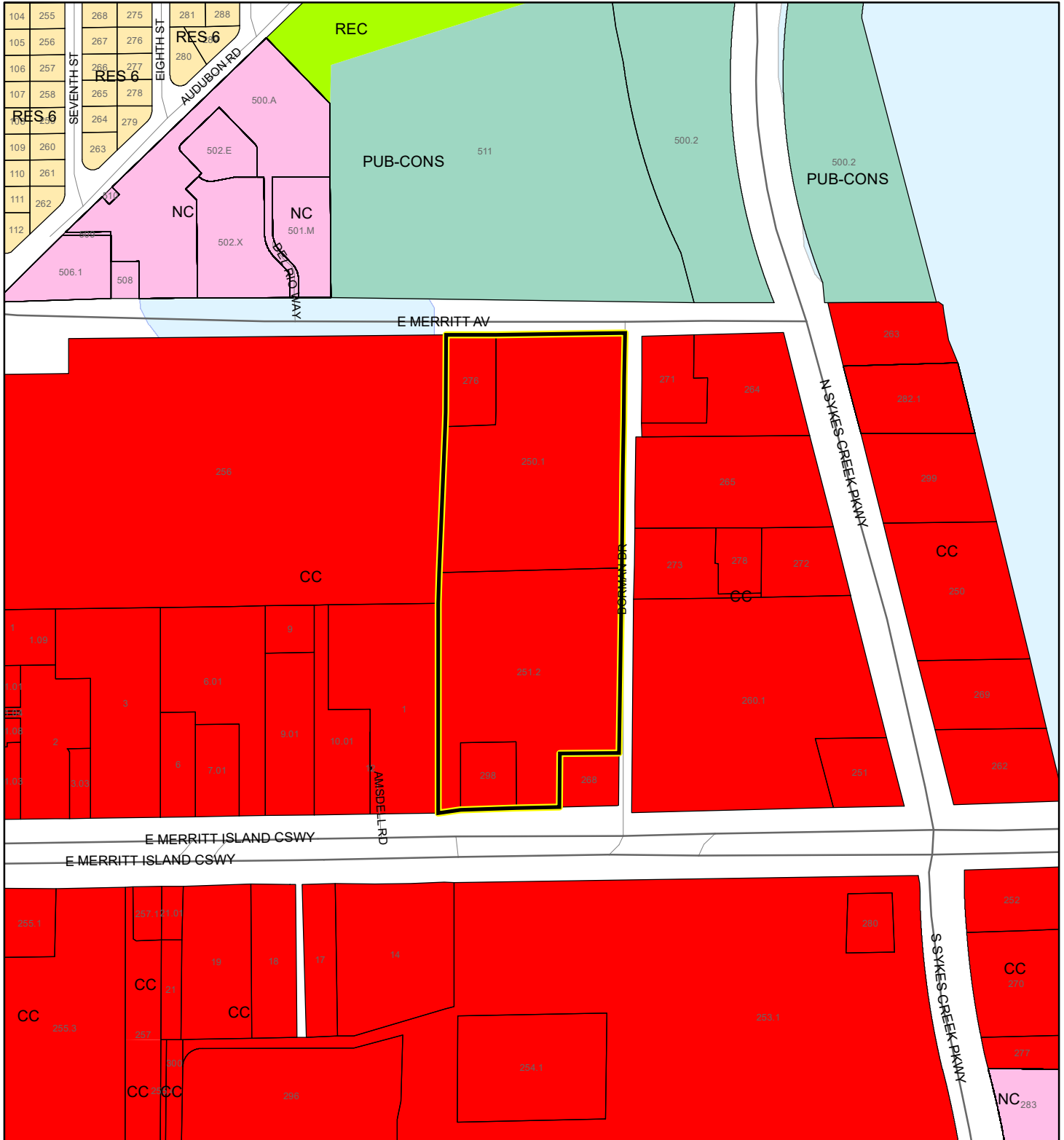
 Parcels

 Zoning

FUTURE LAND USE MAP

HEALTH FIRST INC., AND HEALTH FIRST SHARED SERVICES, INC.

22PUD00001



1:4,800 or 1 inch = 400 feet

Subject Property

Parcels

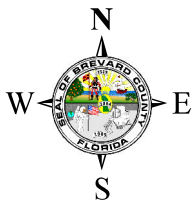
This map was compiled from recorded documents and does not reflect an actual survey. The Brevard County Board of County Commissioners does not assume responsibility for errors or omissions hereon.

Produced by BoCC - GIS Date: 4/19/2022

AERIAL MAP

HEALTH FIRST INC., AND HEALTH FIRST SHARED SERVICES, INC.

22PUD00001




1:4,800 or 1 inch = 400 feet

PHOTO YEAR: 2021

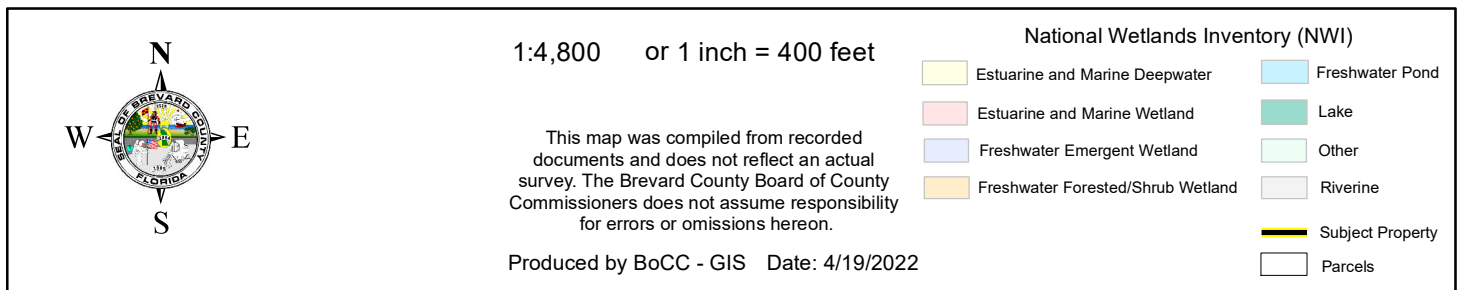
This map was compiled from recorded documents and does not reflect an actual survey. The Brevard County Board of County Commissioners does not assume responsibility for errors or omissions hereon.

Produced by BoCC - GIS Date: 4/19/2022

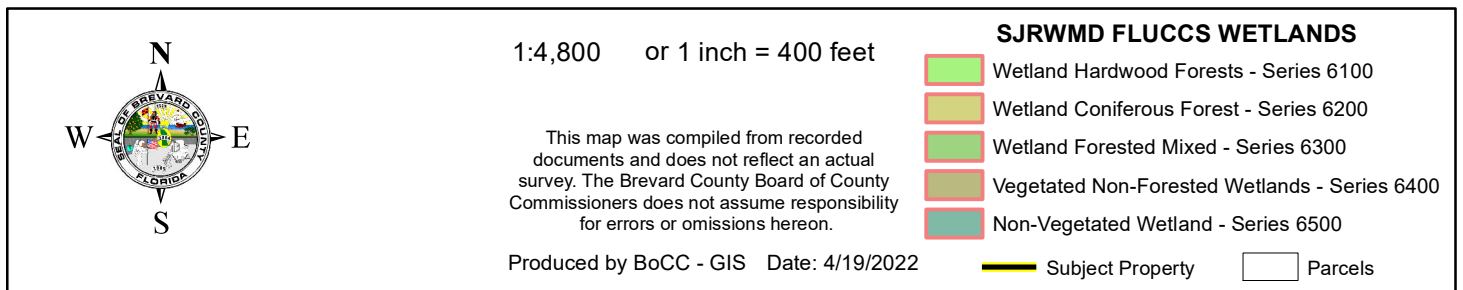
 Subject Property

 Parcels

HEALTH FIRST INC., AND HEALTH FIRST SHARED SERVICES, INC.
22PUD00001



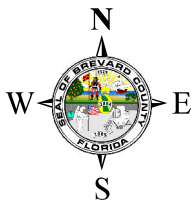
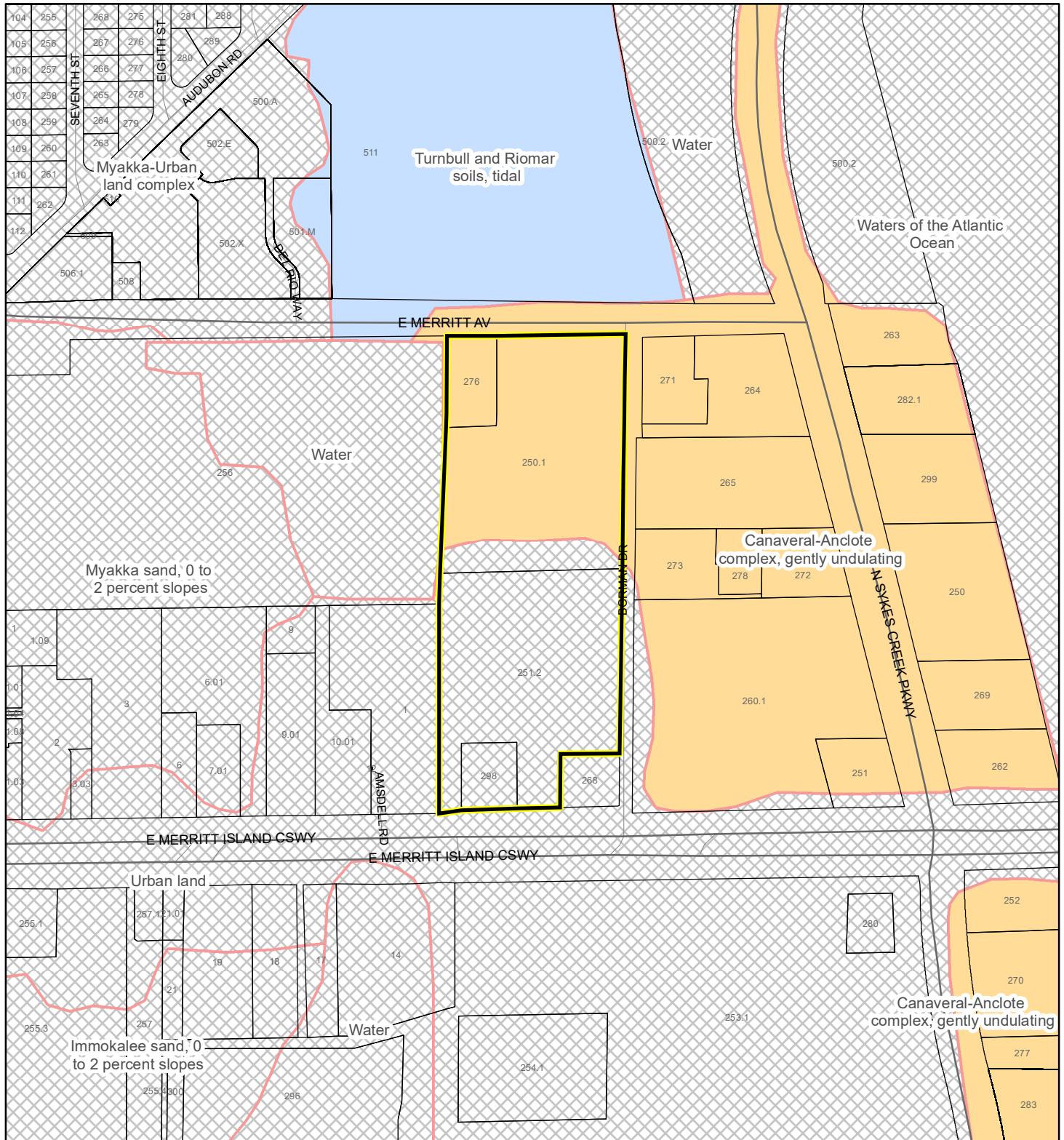
22PUD00001



USDA SCSSS SOILS MAP

HEALTH FIRST INC., AND HEALTH FIRST SHARED SERVICES, INC.

22PUD00001



1:4,800 or 1 inch = 400 feet

This map was compiled from recorded documents and does not reflect an actual survey. The Brevard County Board of County Commissioners does not assume responsibility for errors or omissions hereon.

Produced by BoCC - GIS Date: 4/19/2022

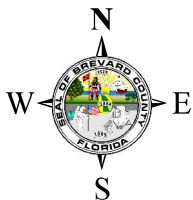
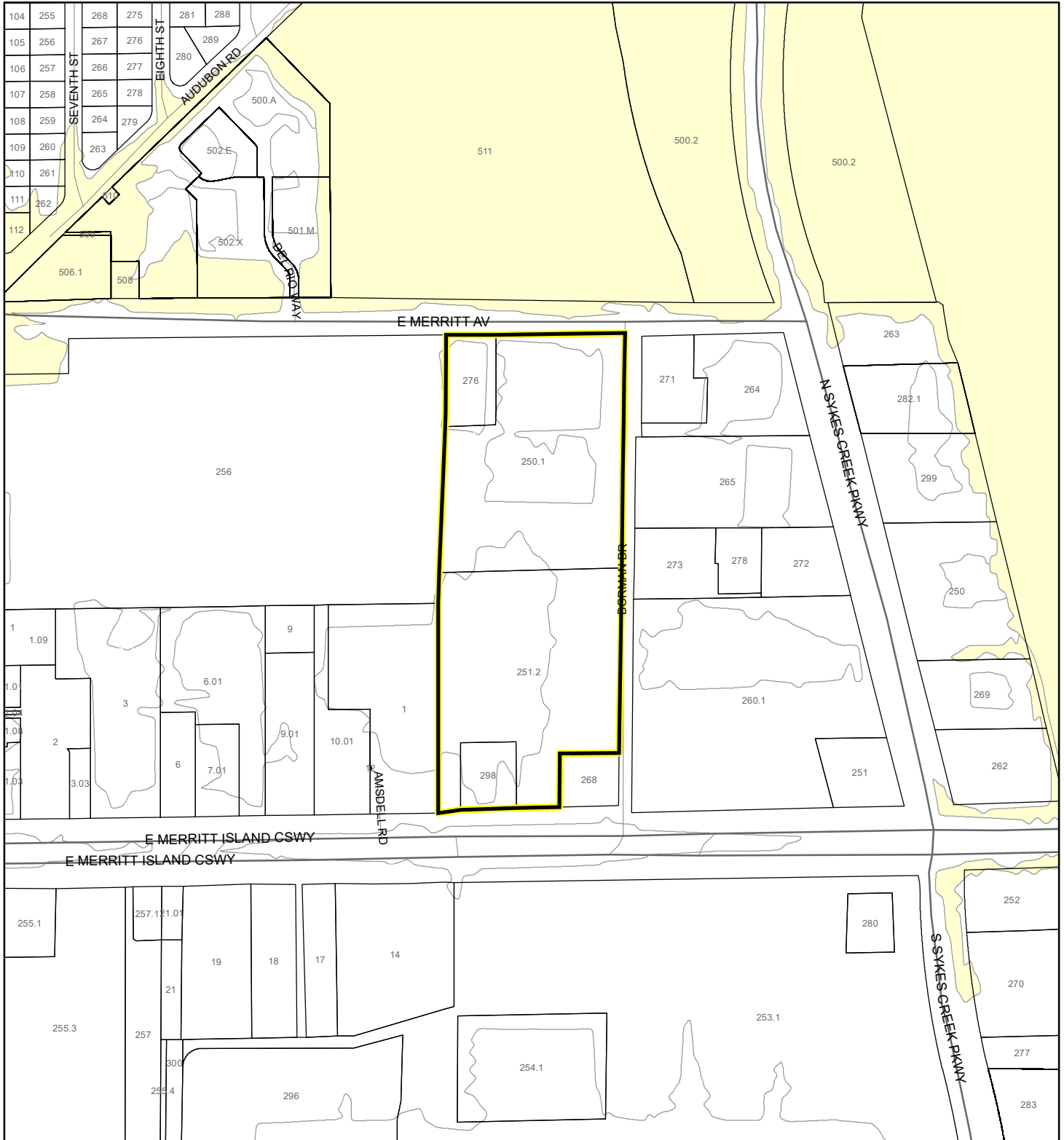
USDA SCSSS Soils

- Aquifer and Hydric
- Aquifer
- Hydric
- None
- Subject Property
- Parcels

FEMA FLOOD ZONES MAP

HEALTH FIRST INC., AND HEALTH FIRST SHARED SERVICES, INC.

22PUD00001



1:4,800 or 1 inch = 400 feet

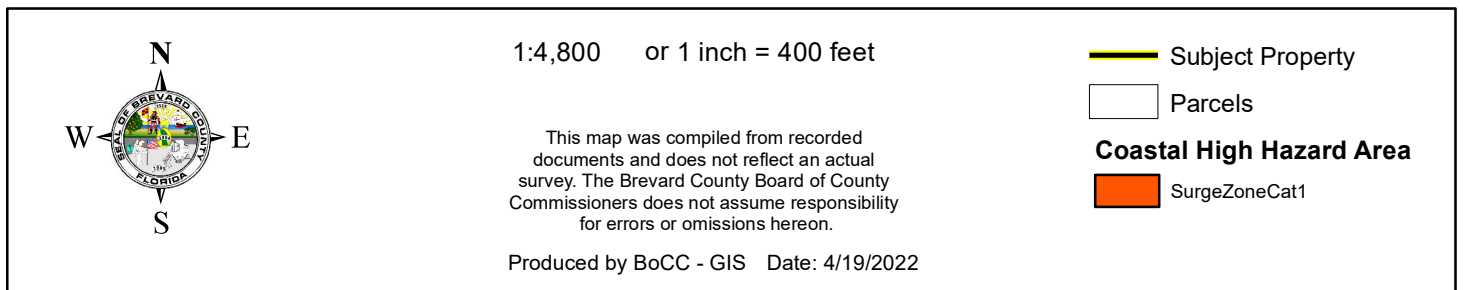
This map was compiled from recorded documents and does not reflect an actual survey. The Brevard County Board of County Commissioners does not assume responsibility for errors or omissions hereon.

Produced by BoCC - GIS Date: 4/19/2022

FEMA Flood Zones

- | | | |
|----------------------------------------------------------------------------------------------------------------------------------------------|----------------------------------------------------------------------------------------------------------------------------------------|-------------------------------------------------------------------------------------------------------------------------------|
| A | AO | X |
| AE | Open Water | |
| AH | VE | |
| Subject Property | Parcels | |

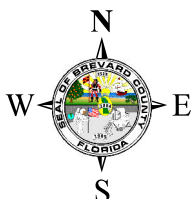
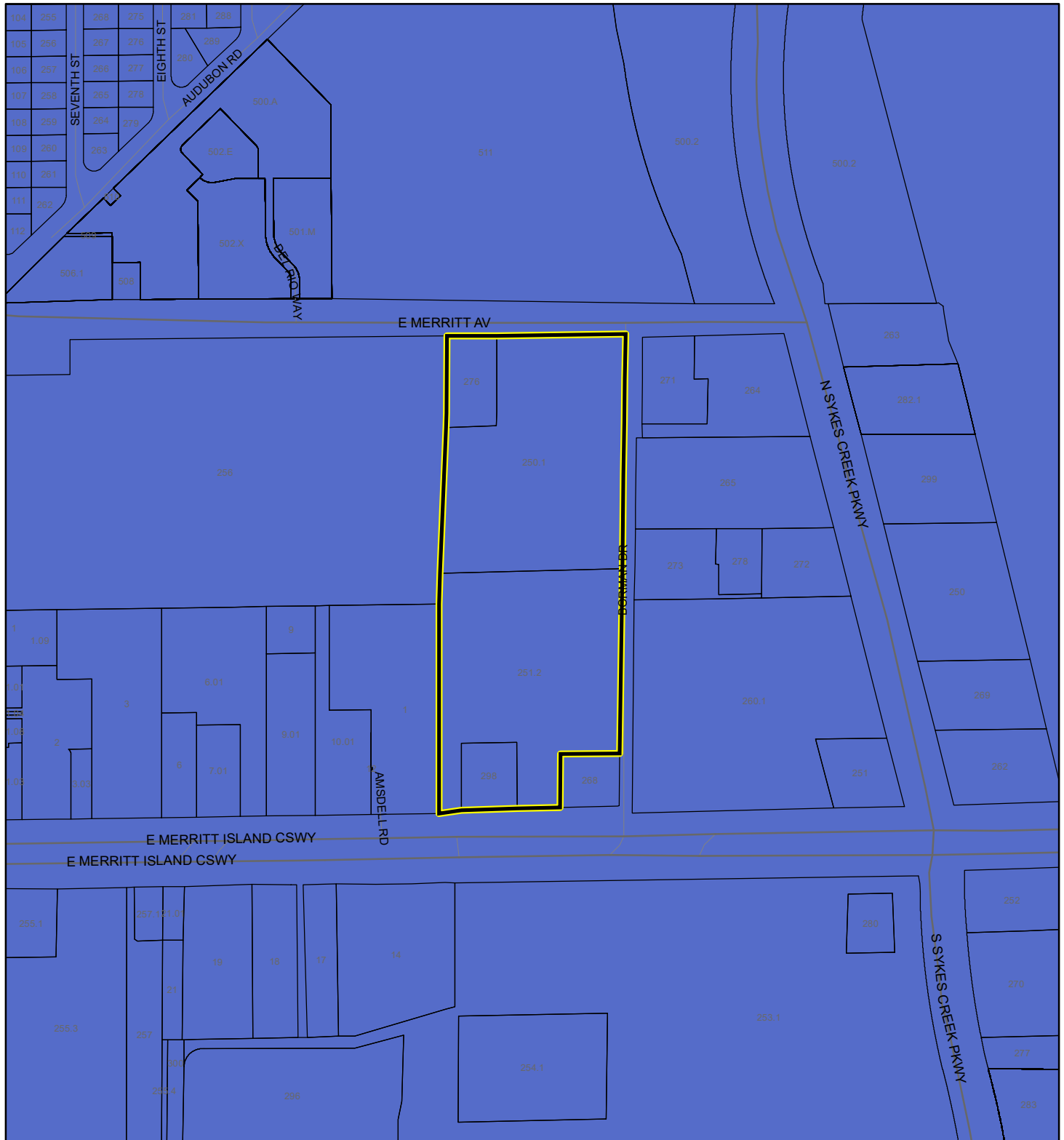
22PUD00001



INDIAN RIVER LAGOON SEPTIC OVERLAY MAP

HEALTH FIRST INC., AND HEALTH FIRST SHARED SERVICES, INC.

22PUD00001



1:4,800 or 1 inch = 400 feet

This map was compiled from recorded documents and does not reflect an actual survey. The Brevard County Board of County Commissioners does not assume responsibility for errors or omissions hereon.

Produced by BoCC - GIS Date: 4/19/2022

 Subject Property

 Parcels

Septic Overlay

 40 Meters

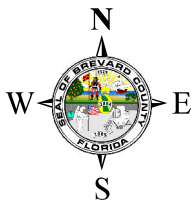
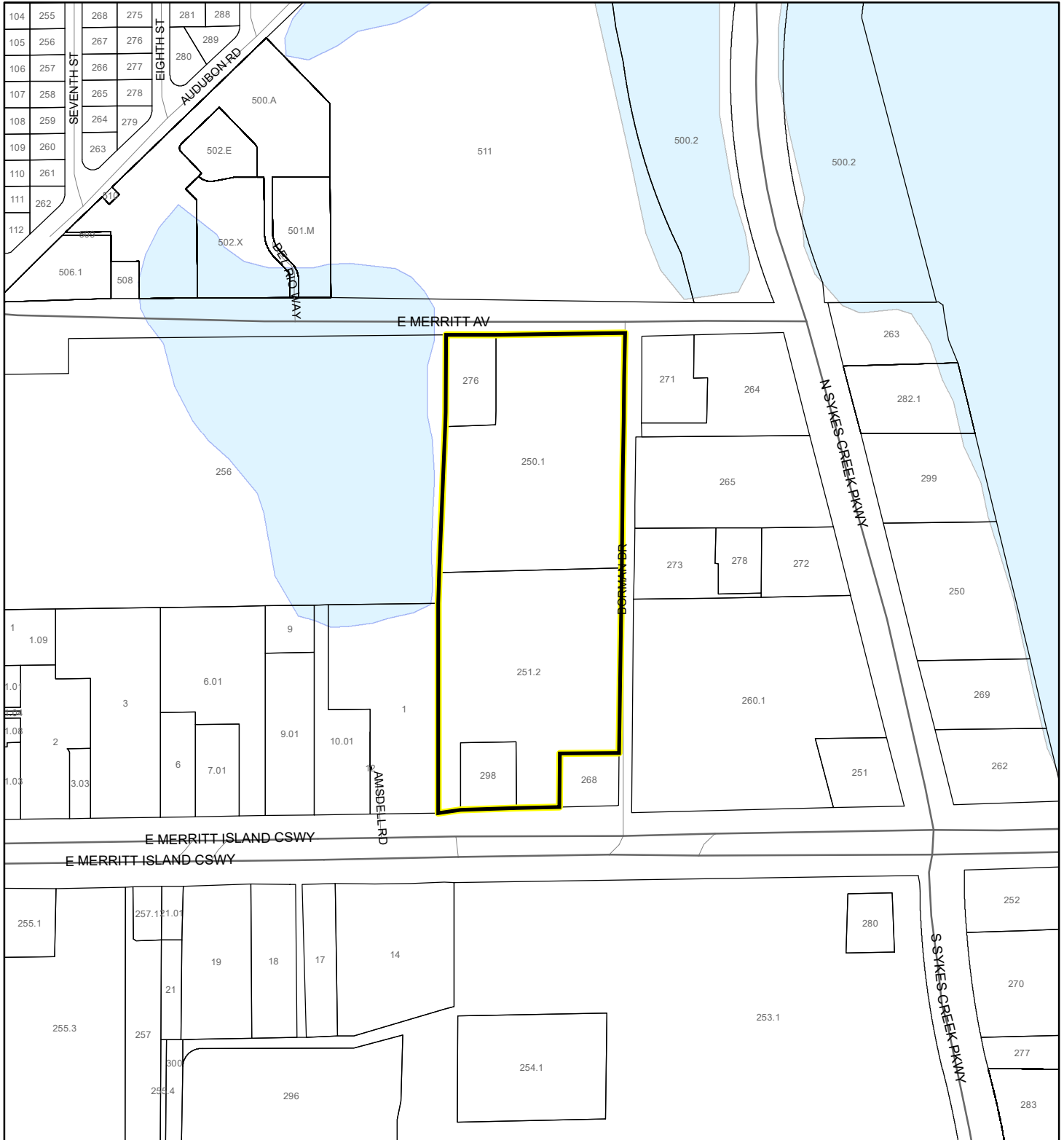
 60 Meters

 All Distances

EAGLE NESTS MAP

HEALTH FIRST INC., AND HEALTH FIRST SHARED SERVICES, INC.

22PUD00001




1:4,800 or 1 inch = 400 feet

This map was compiled from recorded documents and does not reflect an actual survey. The Brevard County Board of County Commissioners does not assume responsibility for errors or omissions hereon.

Produced by BoCC - GIS Date: 4/19/2022

 Subject Property

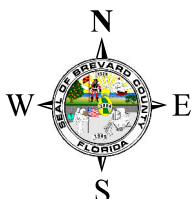
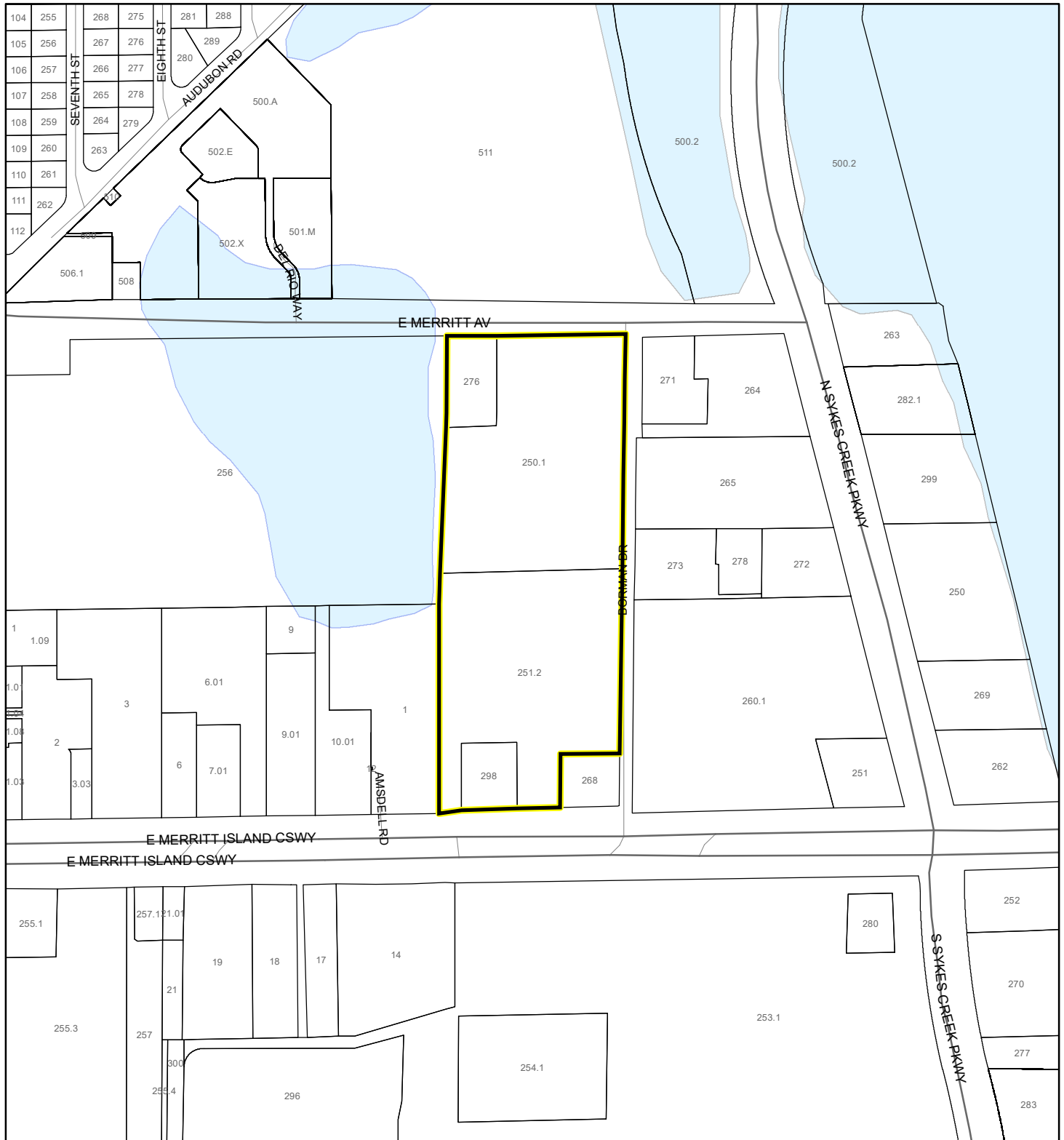
 Parcels

 Eagle Nests
FWS 2010

SCRUB JAY OCCUPANCY MAP

HEALTH FIRST INC., AND HEALTH FIRST SHARED SERVICES, INC.

22PUD00001



1:4,800 or 1 inch = 400 feet

This map was compiled from recorded documents and does not reflect an actual survey. The Brevard County Board of County Commissioners does not assume responsibility for errors or omissions hereon.

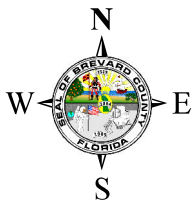
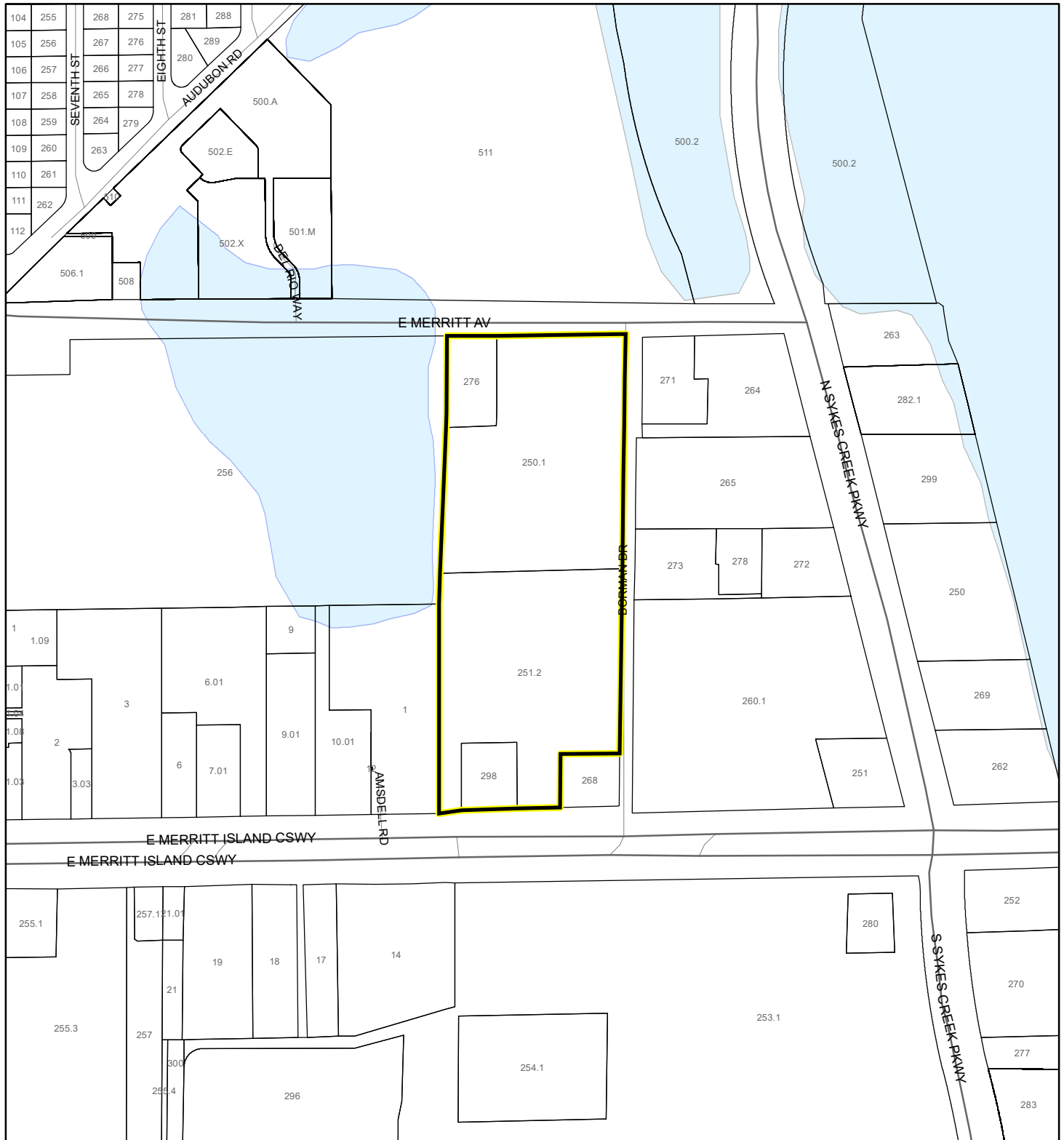
Produced by BoCC - GIS Date: 4/19/2022

- Subject Property
- Parcels
- Scrub Jay Occupancy

SJRWMD FLUCCS UPLAND FORESTS - 4000 Series MAP

HEALTH FIRST INC., AND HEALTH FIRST SHARED SERVICES, INC.

22PUD00001



1:4,800 or 1 inch = 400 feet

This map was compiled from recorded documents and does not reflect an actual survey. The Brevard County Board of County Commissioners does not assume responsibility for errors or omissions hereon.

Produced by BoCC - GIS Date: 4/19/2022

SJRWMD FLUCCS Upland Forests

- Upland Coniferous Forest - 4100 Series
- Upland Hardwood Forest - 4200 Series
- Upland Mixed Forest - 4300 Series
- Tree Plantations - 4400 Series

Subject Property

Parcels