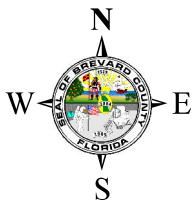
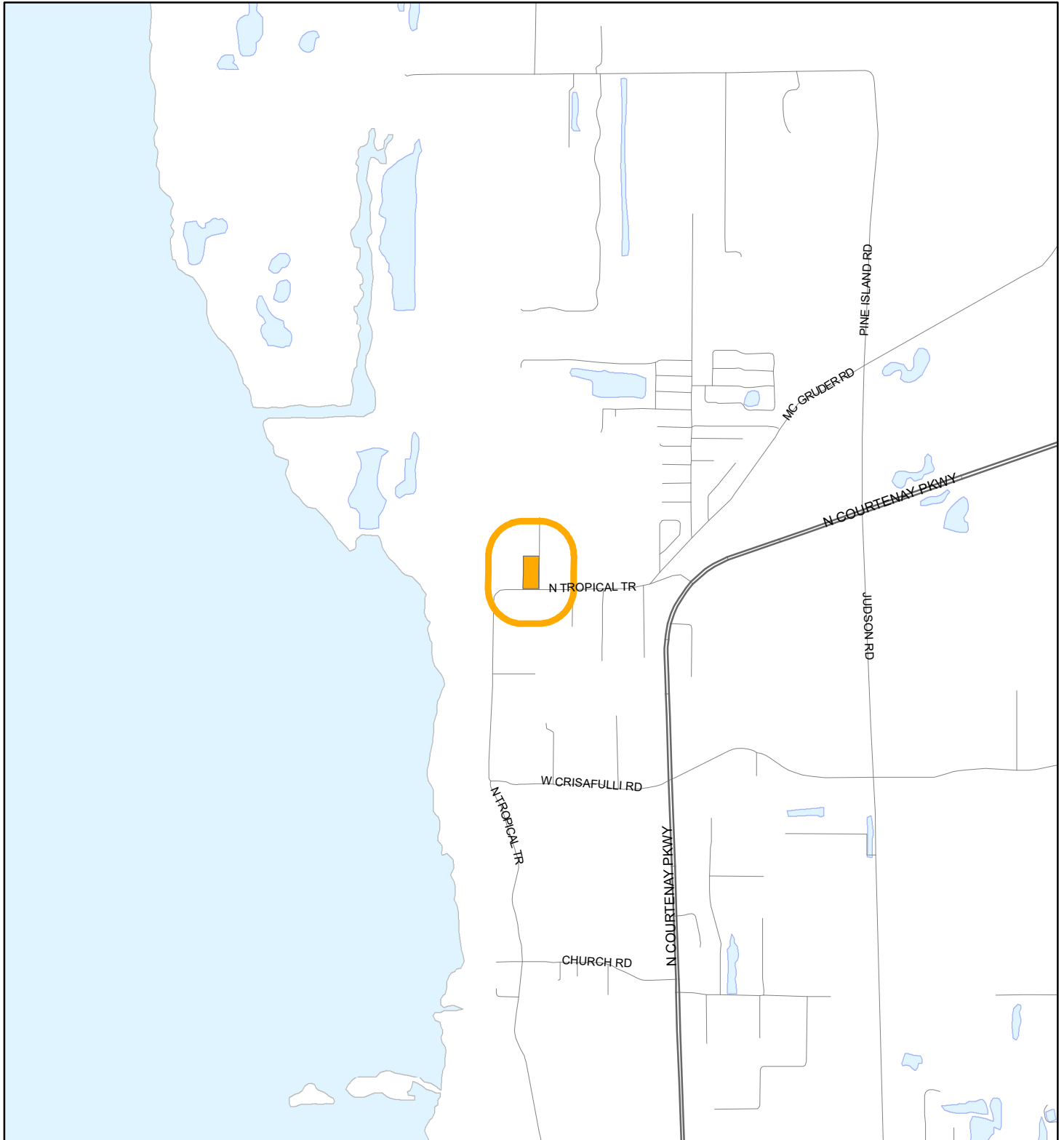


LOCATION MAP

BOUCHER, TYLER M. AND CRISTINA N.
22Z00009



1:24,000 or 1 inch = 2,000 feet

Buffer Distance: 500 feet

This map was compiled from recorded documents and does not reflect an actual survey. The Brevard County Board of County Commissioners does not assume responsibility for errors or omissions hereon.

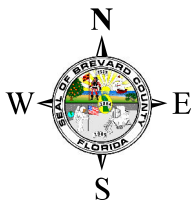
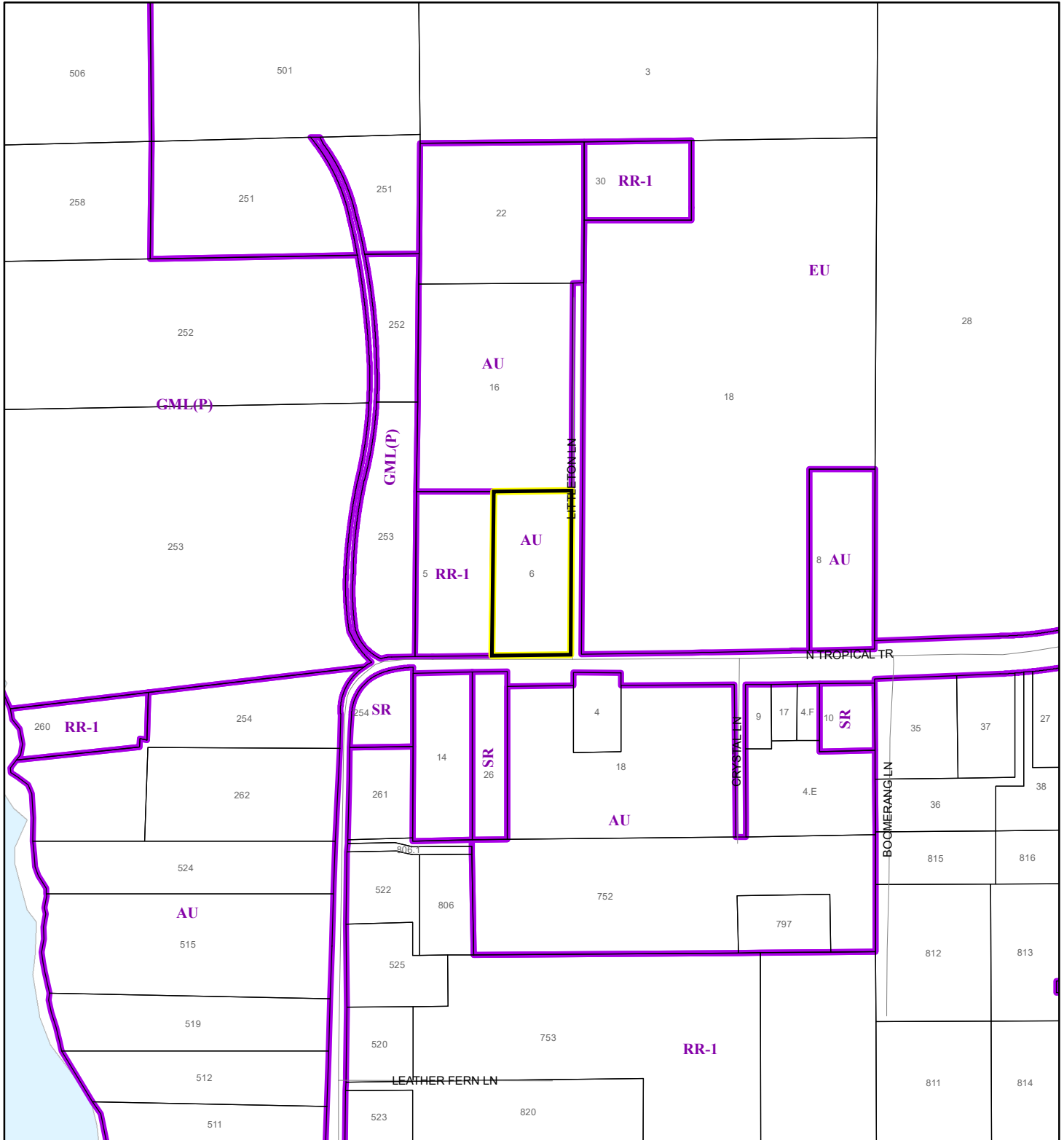
Produced by BoCC - GIS Date: 2/11/2022

Buffer
Subject Property

ZONING MAP

BOUCHER, TYLER M. AND CRISTINA N.


22Z00009



1:4,800 or 1 inch = 400 feet

This map was compiled from recorded documents and does not reflect an actual survey. The Brevard County Board of County Commissioners does not assume responsibility for errors or omissions hereon.

Produced by BoCC - GIS Date: 2/11/2022

 Subject Property

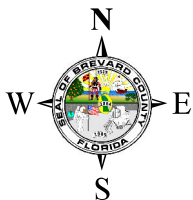
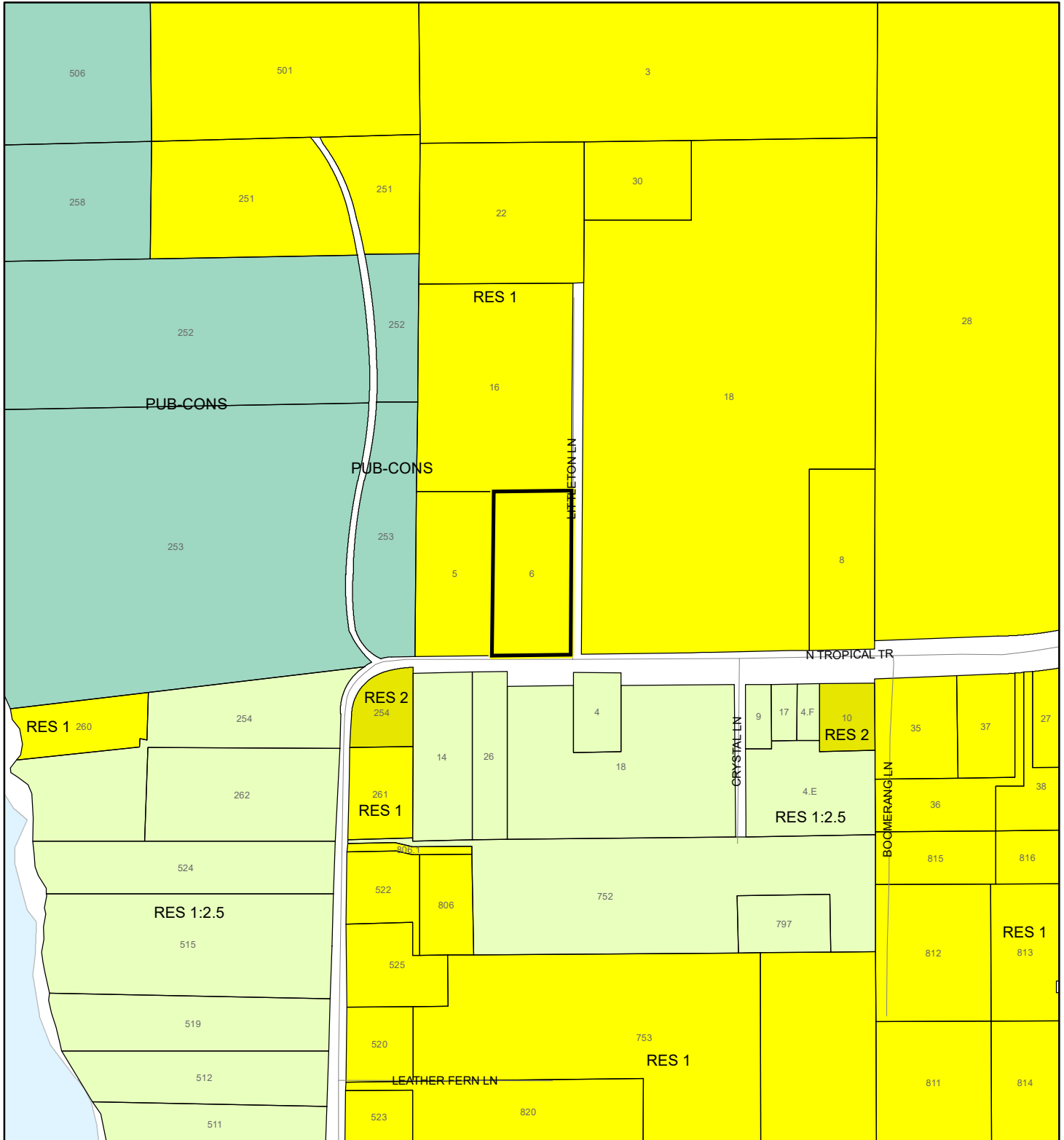
 Parcels

 Zoning



FUTURE LAND USE MAP

BOUCHER, TYLER M. AND CRISTINA N.

22Z00009



1:4,800 or 1 inch = 400 feet

 Subject Property
 Parcels

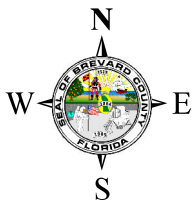
This map was compiled from recorded documents and does not reflect an actual survey. The Brevard County Board of County Commissioners does not assume responsibility for errors or omissions hereon.

Produced by BoCC - GIS Date: 2/11/2022

AERIAL MAP

BOUCHER, TYLER M. AND CRISTINA N.

22Z00009




1:4,800 or 1 inch = 400 feet

PHOTO YEAR: 2021

This map was compiled from recorded documents and does not reflect an actual survey. The Brevard County Board of County Commissioners does not assume responsibility for errors or omissions hereon.

Produced by BoCC - GIS Date: 2/11/2022

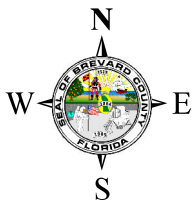
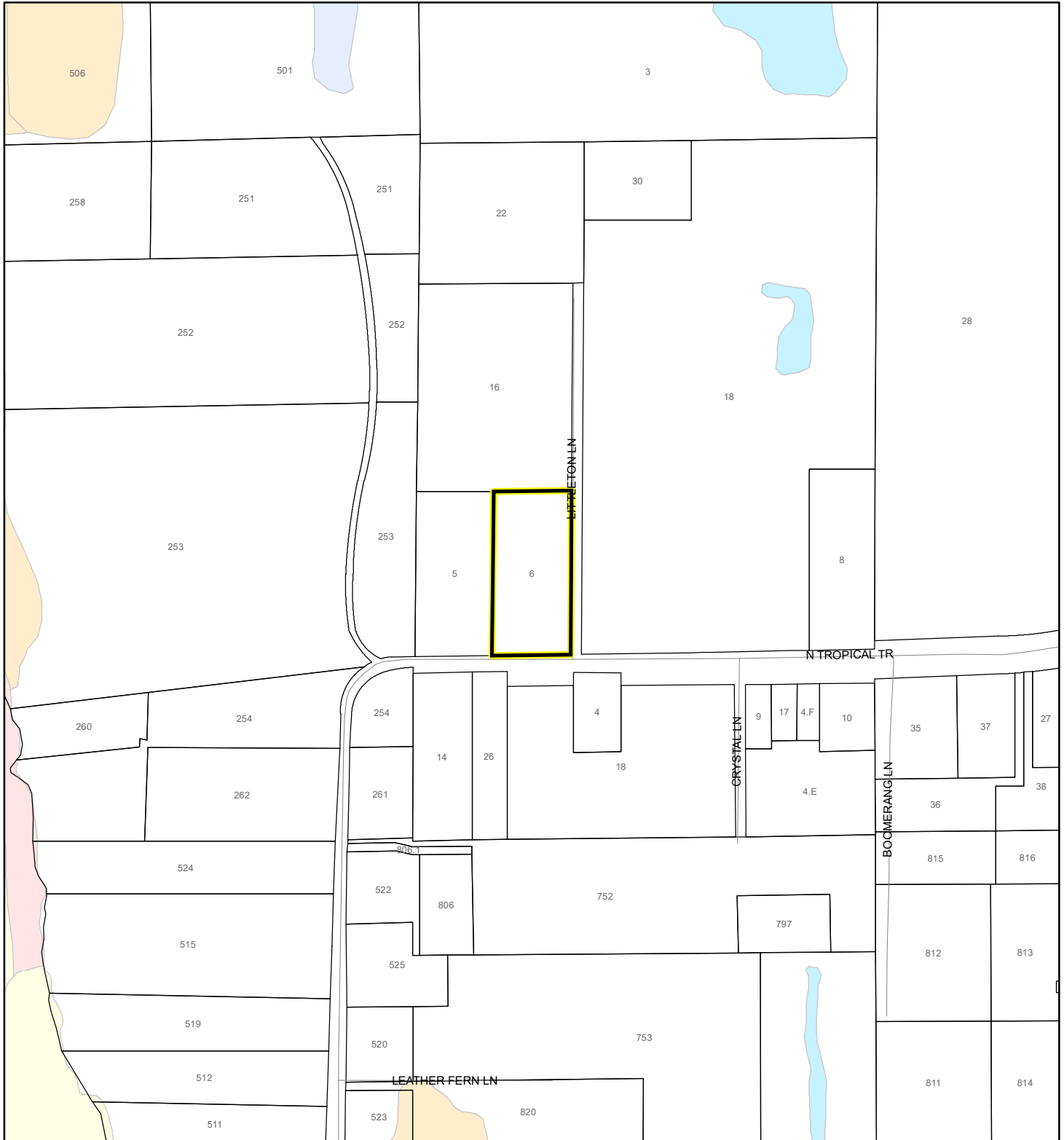
 Subject Property

 Parcels

NWI WETLANDS MAP

BOUCHER, TYLER M. AND CRISTINA N.

22Z00009



1:4,800 or 1 inch = 400 feet

This map was compiled from recorded documents and does not reflect an actual survey. The Brevard County Board of County Commissioners does not assume responsibility for errors or omissions hereon.

Produced by BoCC - GIS Date: 2/11/2022

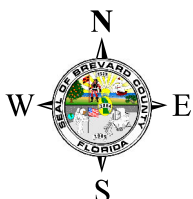
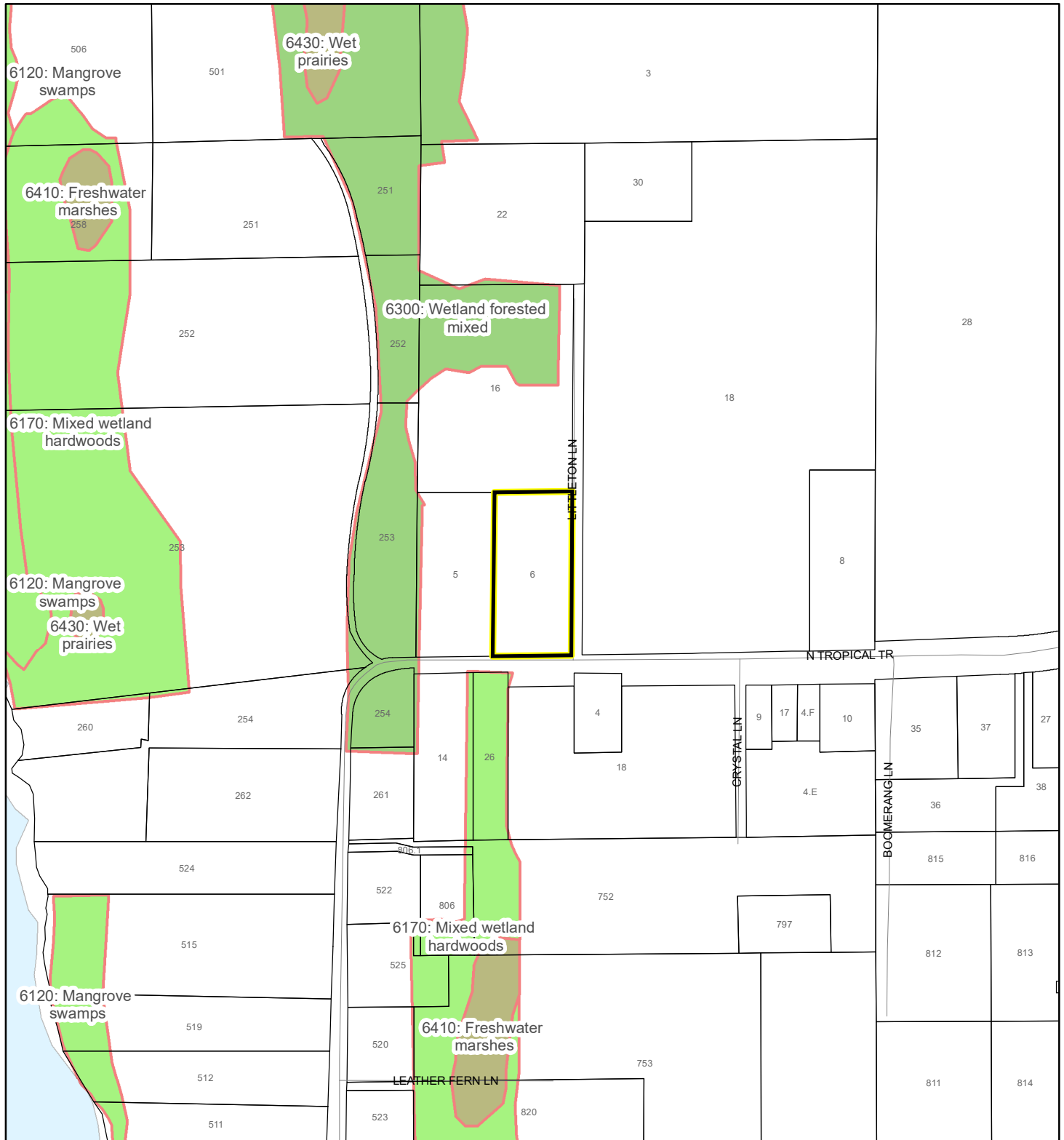
National Wetlands Inventory (NWI)

Estuarine and Marine Deepwater	Freshwater Pond
Estuarine and Marine Wetland	Lake
Freshwater Emergent Wetland	Other
Freshwater Forested/Shrub Wetland	Riverine
Subject Property	Parcels

SJRWMD FLUCCS WETLANDS - 6000 Series MAP

BOUCHER, TYLER M. AND CRISTINA N.

22Z00009



1:4,800 or 1 inch = 400 feet

This map was compiled from recorded documents and does not reflect an actual survey. The Brevard County Board of County Commissioners does not assume responsibility for errors or omissions hereon.

Produced by BoCC - GIS Date: 2/11/2022

SJRWMD FLUCCS WETLANDS

- Wetland Hardwood Forests - Series 6100
- Wetland Coniferous Forest - Series 6200
- Wetland Forested Mixed - Series 6300
- Vegetated Non-Forested Wetlands - Series 6400
- Non-Vegetated Wetland - Series 6500

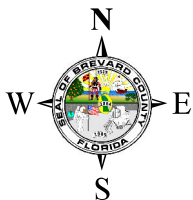
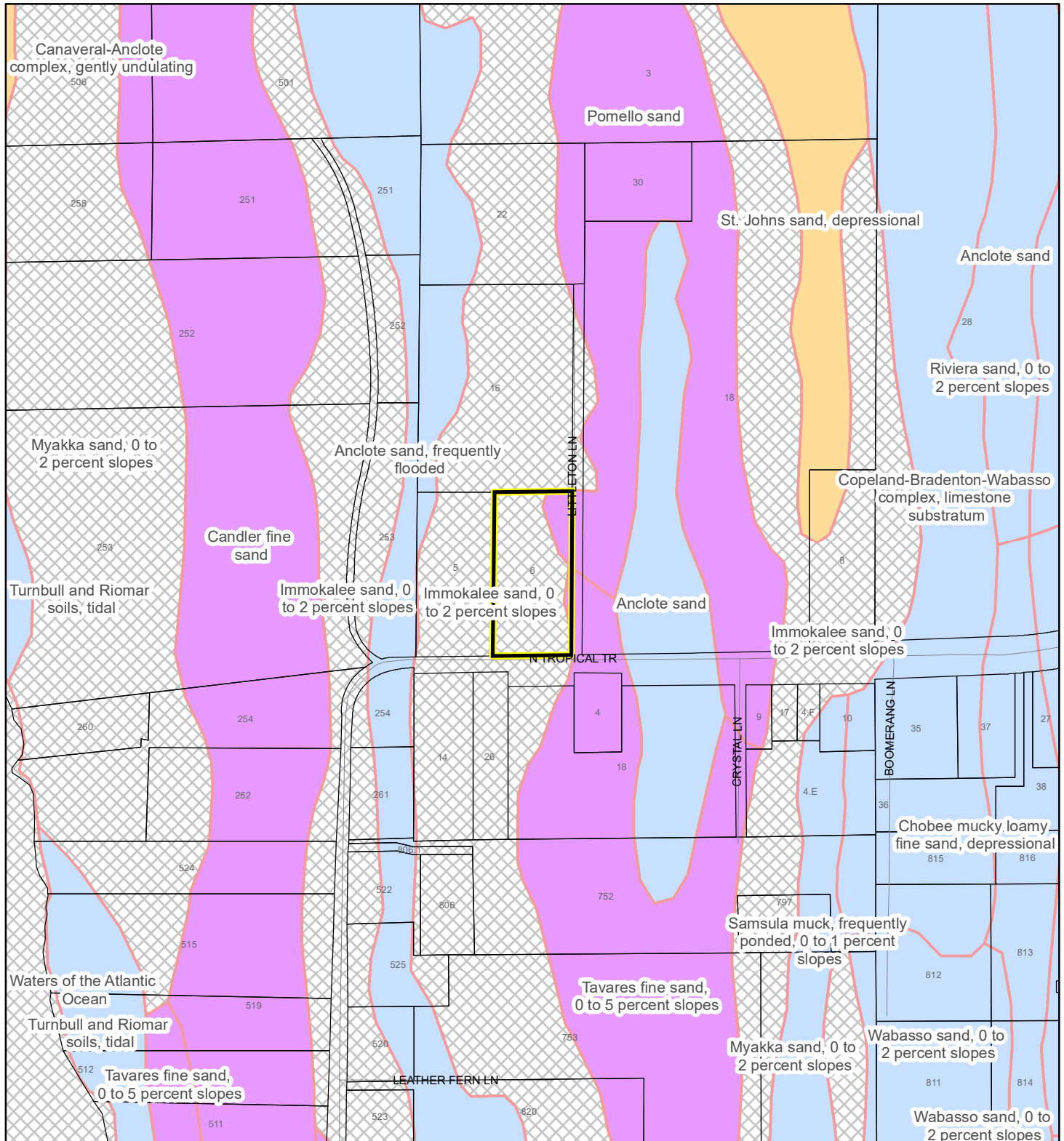
Subject Property

Parcels

USDA SCSSS SOILS MAP

BOUCHER, TYLER M. AND CRISTINA N.

22Z00009



1:4,800 or 1 inch = 400 feet

This map was compiled from recorded documents and does not reflect an actual survey. The Brevard County Board of County Commissioners does not assume responsibility for errors or omissions hereon.

Produced by BoCC - GIS Date: 2/11/2022

USDA SCSSS Soils

- Aquifer and Hydric
- Aquifer
- Hydric
- None

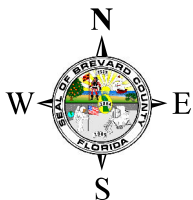
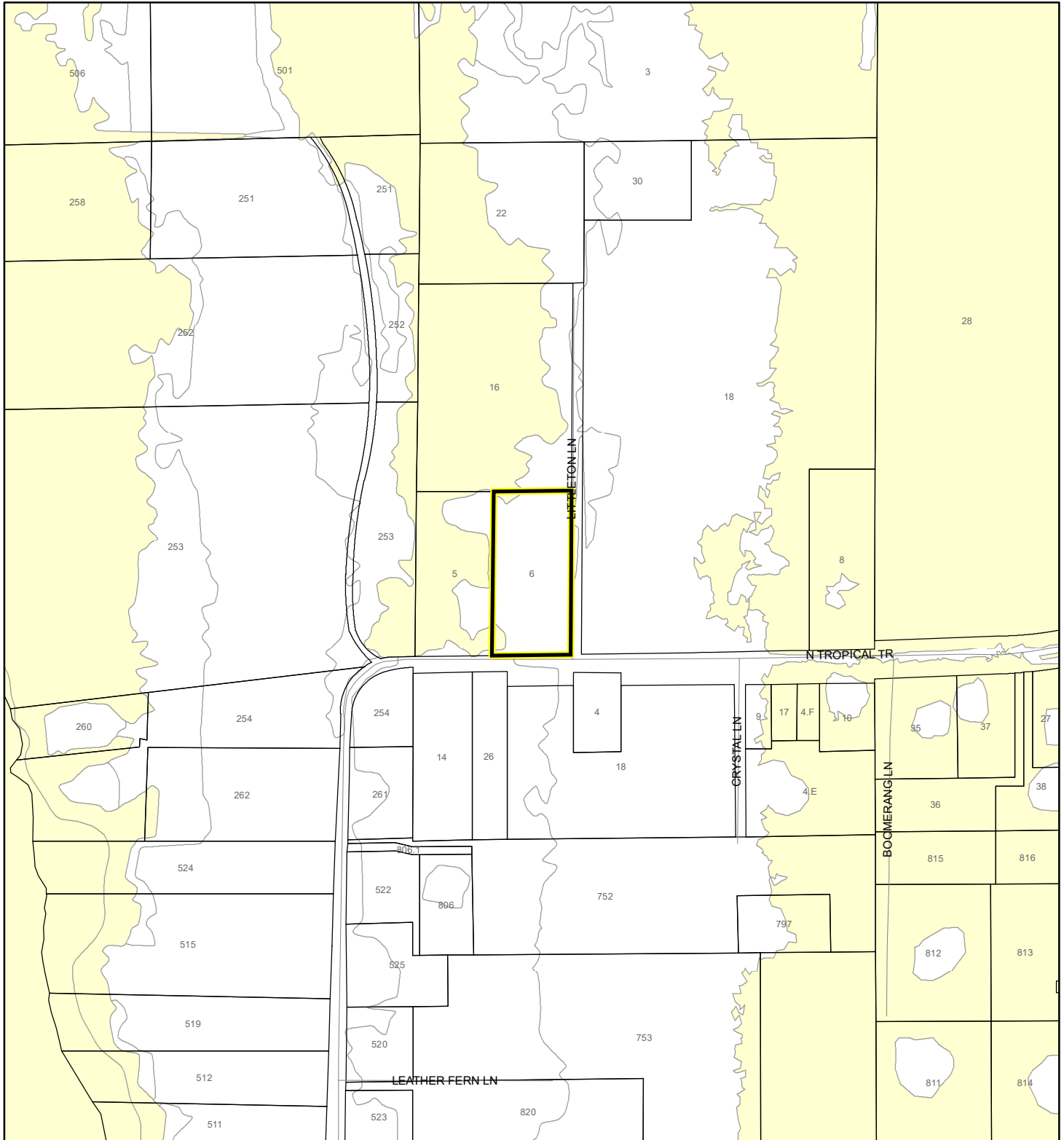
Subject Property

Parcels

FEMA FLOOD ZONES MAP

BOUCHER, TYLER M. AND CRISTINA N.

22Z00009



1:4,800 or 1 inch = 400 feet

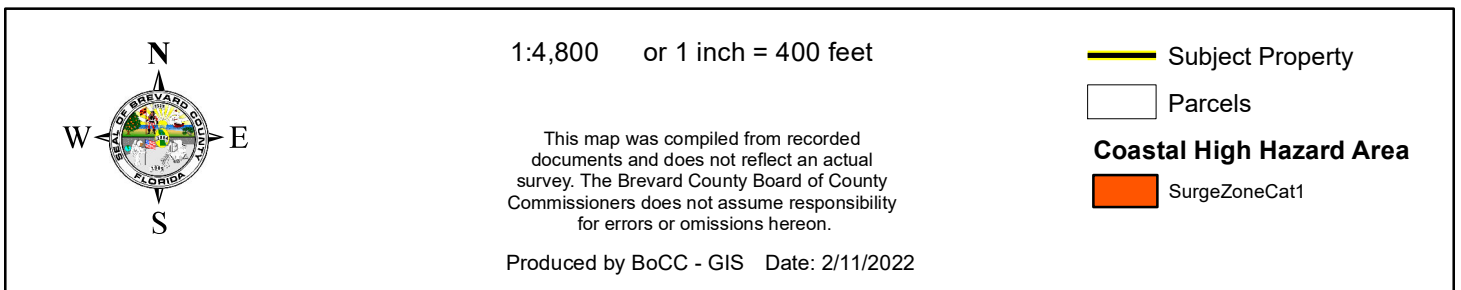
This map was compiled from recorded documents and does not reflect an actual survey. The Brevard County Board of County Commissioners does not assume responsibility for errors or omissions hereon.

Produced by BoCC - GIS Date: 2/11/2022

FEMA Flood Zones

- | | | |
|----------------------------------------------------------------------------------------------------------------------------------------------|----------------------------------------------------------------------------------------------------------------------------------------|-------------------------------------------------------------------------------------------------------------------------------|
| A | AO | X |
| AE | Open Water | |
| AH | VE | |
| Subject Property | Parcels | |

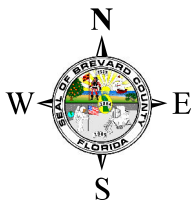
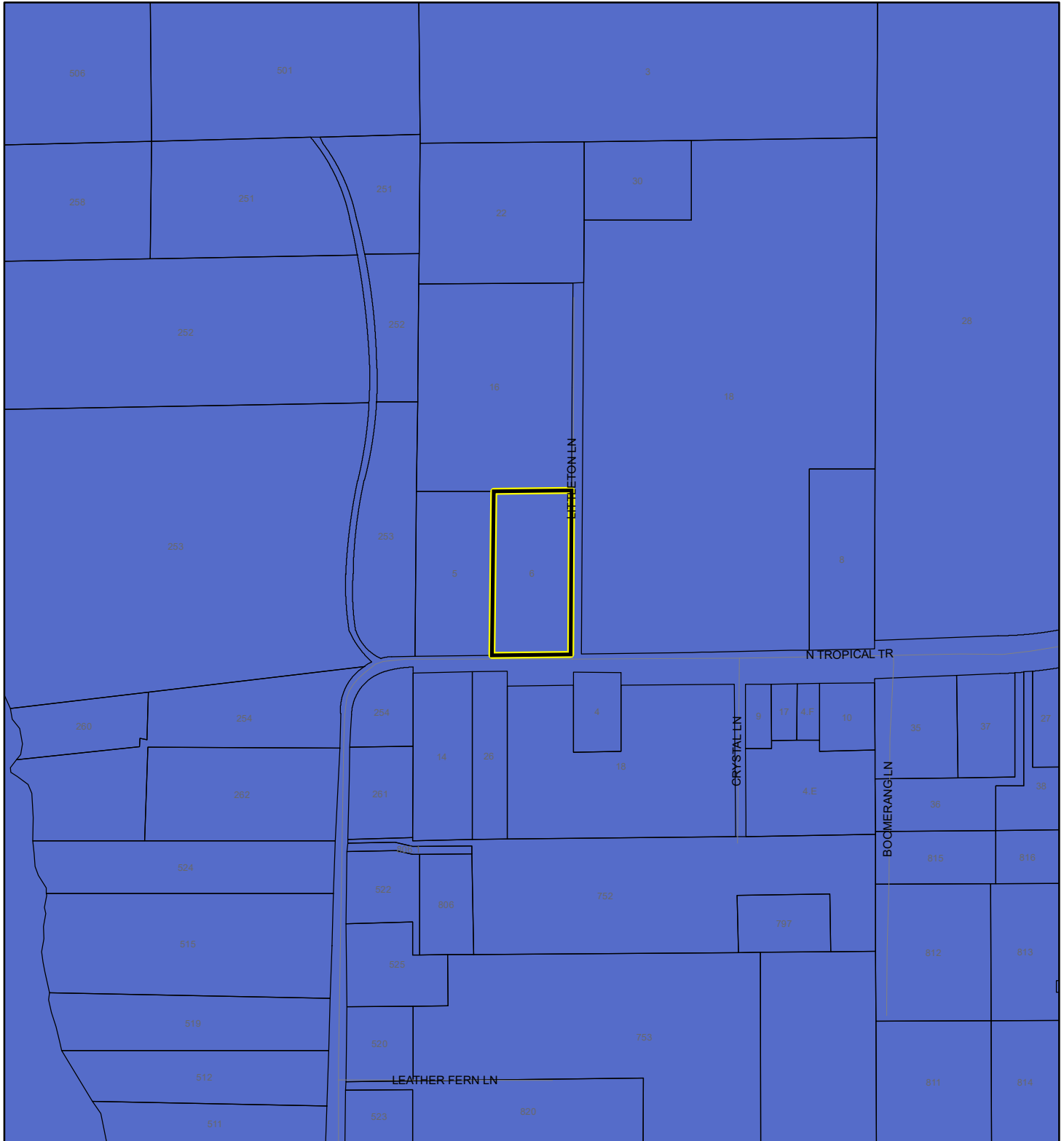
22Z00009



INDIAN RIVER LAGOON SEPTIC OVERLAY MAP

BOUCHER, TYLER M. AND CRISTINA N.

22Z00009




1:4,800 or 1 inch = 400 feet

This map was compiled from recorded documents and does not reflect an actual survey. The Brevard County Board of County Commissioners does not assume responsibility for errors or omissions hereon.

Produced by BoCC - GIS Date: 2/11/2022

 Subject Property

 Parcels

Septic Overlay

 40 Meters

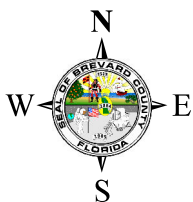
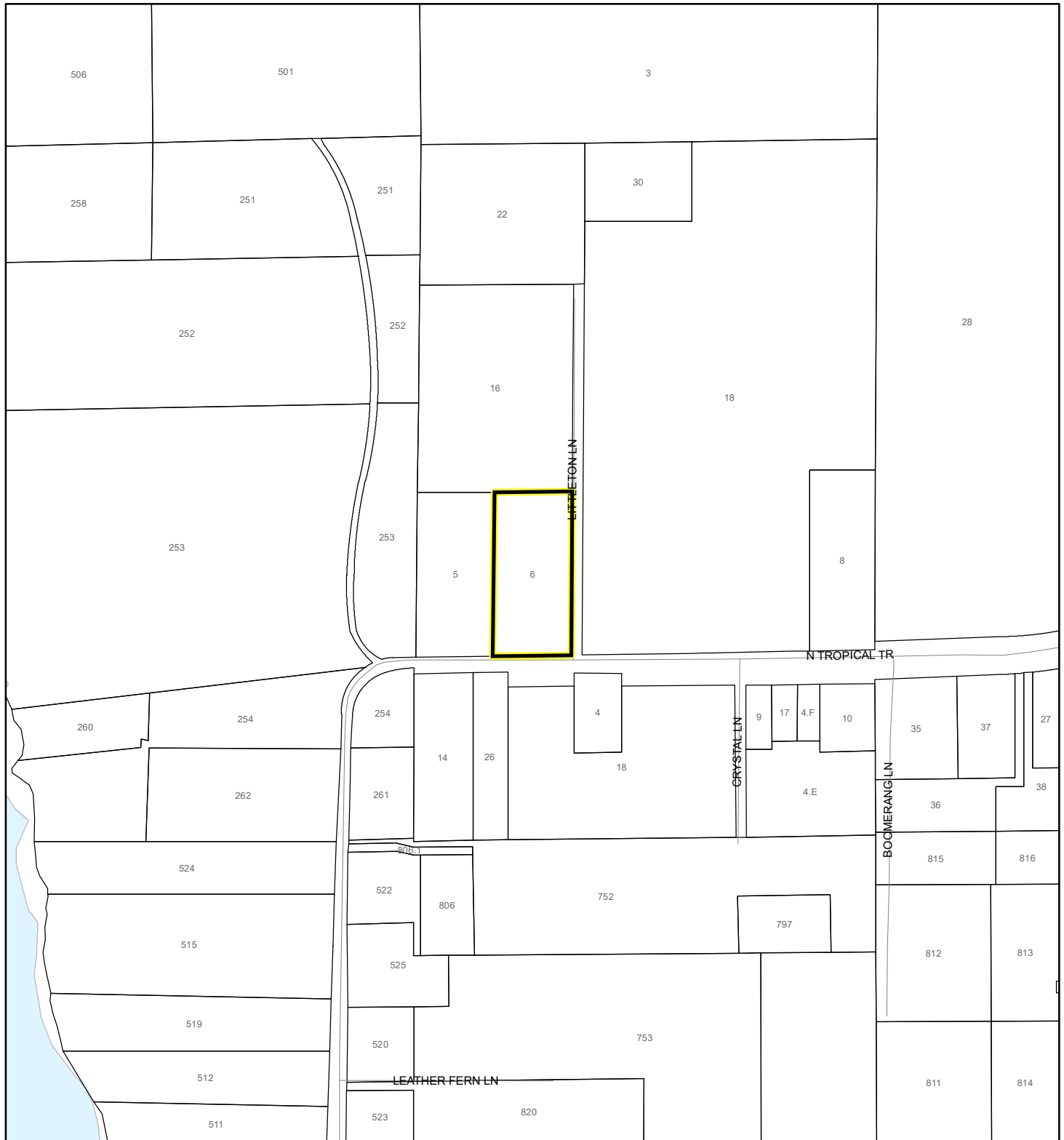
 60 Meters

 All Distances

EAGLE NESTS MAP

BOUCHER, TYLER M. AND CRISTINA N.

22Z00009




1:4,800 or 1 inch = 400 feet

This map was compiled from recorded documents and does not reflect an actual survey. The Brevard County Board of County Commissioners does not assume responsibility for errors or omissions hereon.

Produced by BoCC - GIS Date: 2/11/2022

 Subject Property

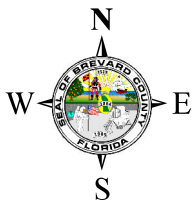
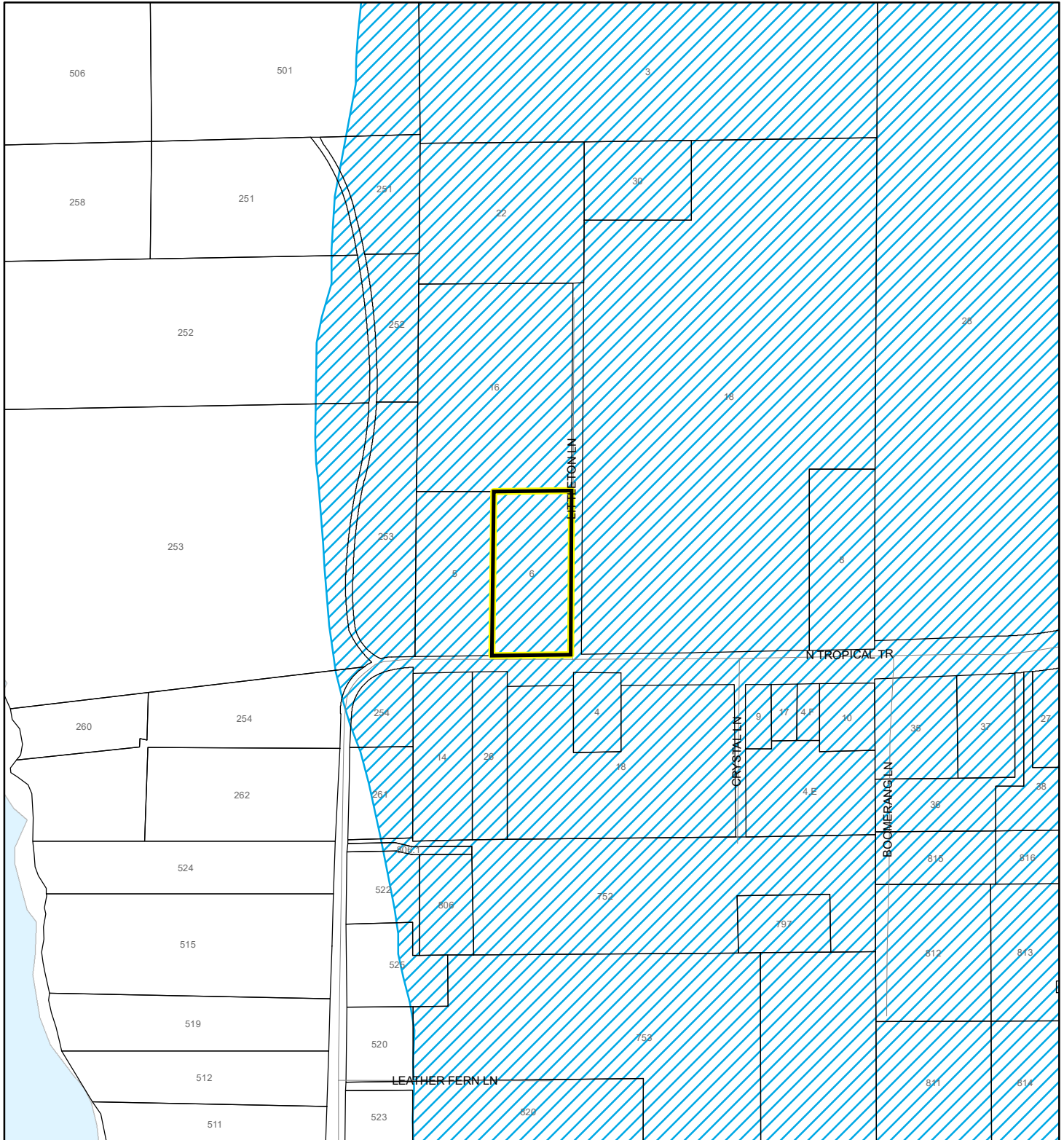
 Parcels

 Eagle Nests
FWS 2010

SCRUB JAY OCCUPANCY MAP

BOUCHER, TYLER M. AND CRISTINA N.




22Z00009



1:4,800 or 1 inch = 400 feet

This map was compiled from recorded documents and does not reflect an actual survey. The Brevard County Board of County Commissioners does not assume responsibility for errors or omissions hereon.

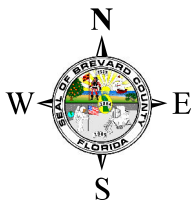
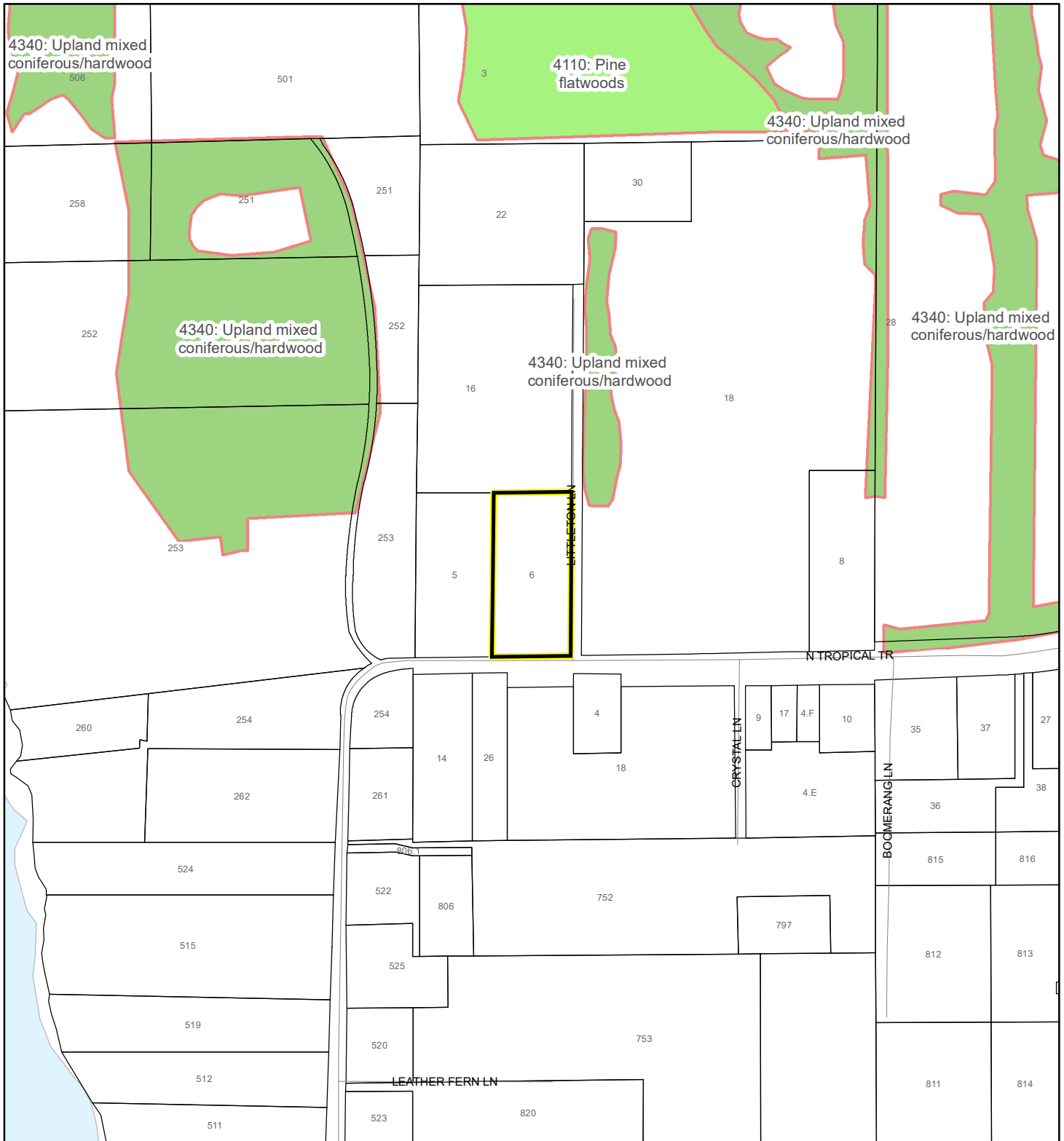
Produced by BoCC - GIS Date: 2/11/2022

-  Subject Property
-  Parcels
-  Scrub Jay Occupancy

SJRWMD FLUCCS UPLAND FORESTS - 4000 Series MAP

BOUCHER, TYLER M. AND CRISTINA N.

22Z00009



1:4,800 or 1 inch = 400 feet

This map was compiled from recorded documents and does not reflect an actual survey. The Brevard County Board of County Commissioners does not assume responsibility for errors or omissions hereon.

Produced by BoCC - GIS Date: 2/11/2022

SJRWMD FLUCCS Upland Forests

- Upland Coniferous Forest - 4100 Series
- Upland Hardwood Forest - 4200 Series
- Upland Mixed Forest - 4300 Series
- Tree Plantations - 4400 Series

Subject Property

Parcels