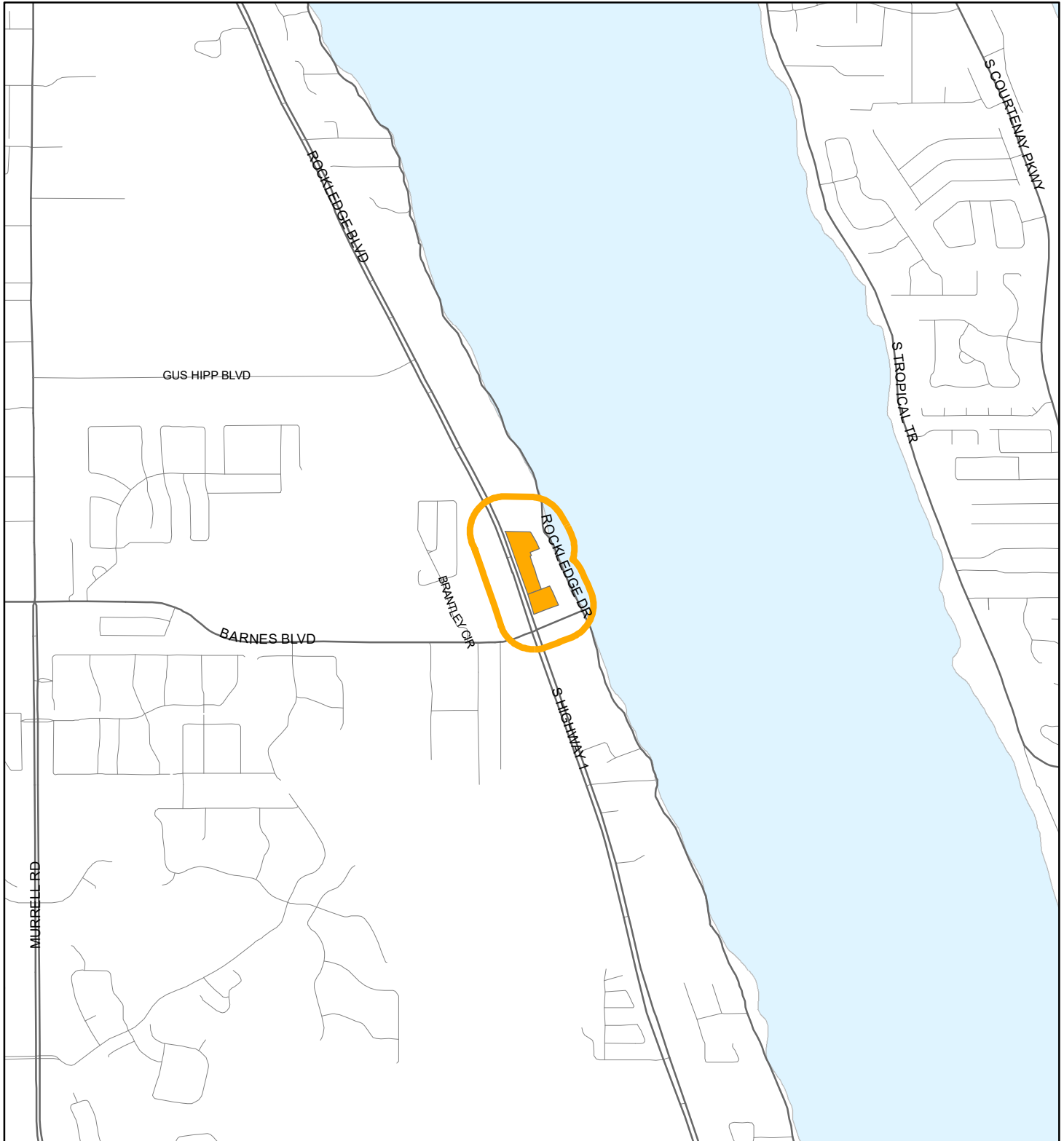


LOCATION MAP

HARVEY REALTY CORPORATION, AND HARVEY'S INDIAN RIVER GROVES, INC.

22Z00004





1:24,000 or 1 inch = 2,000 feet

Buffer Distance: 500 feet

This map was compiled from recorded documents and does not reflect an actual survey. The Brevard County Board of County Commissioners does not assume responsibility for errors or omissions hereon.

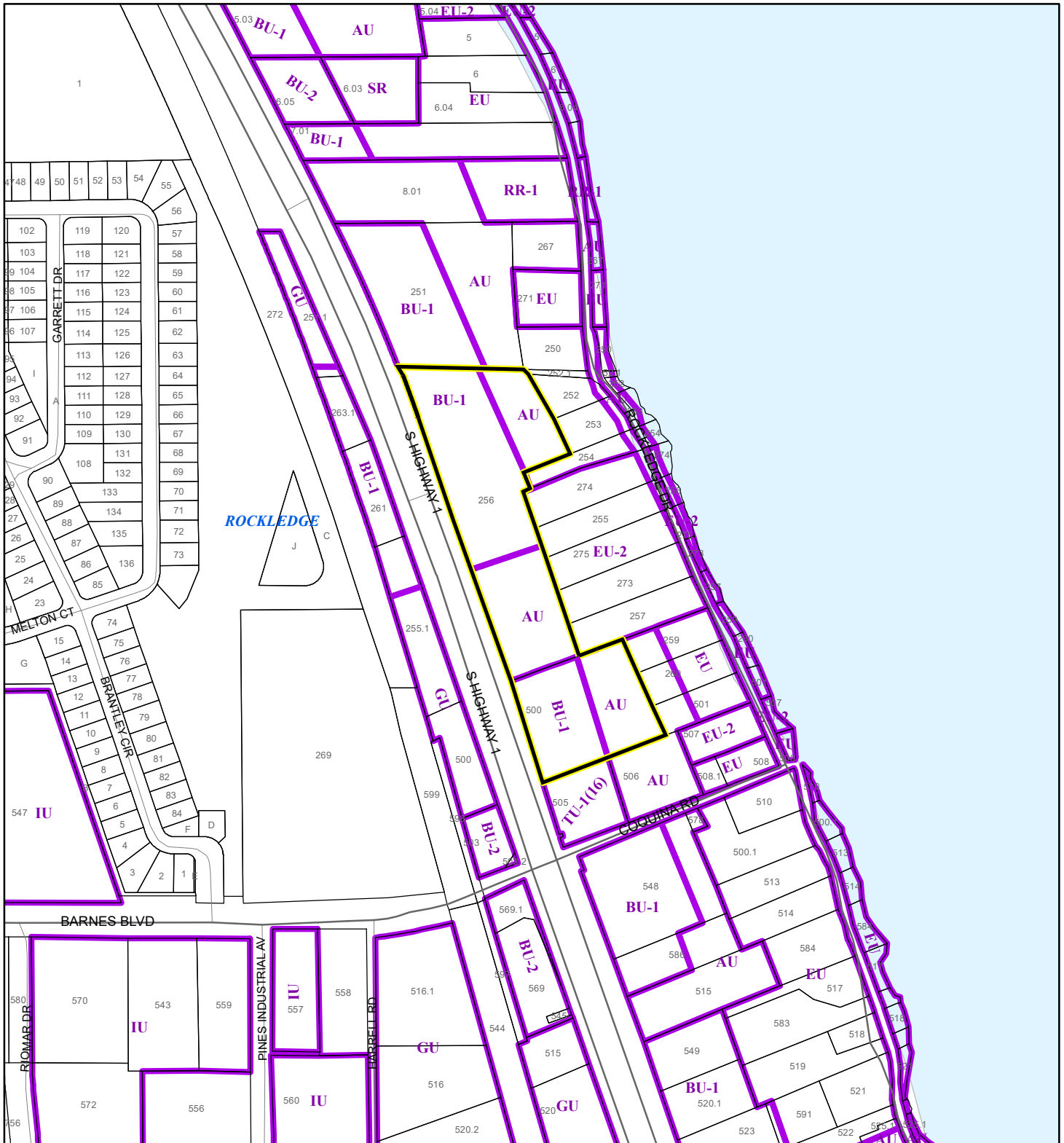
Produced by BoCC - GIS Date: 1/18/2022

 Buffer
 Subject Property

ZONING MAP

HARVEY REALTY CORPORATION, AND HARVEY'S INDIAN RIVER GROVES, INC.

22Z00004



1:4,800 or 1 inch = 400 feet

This map was compiled from recorded documents and does not reflect an actual survey. The Brevard County Board of County Commissioners does not assume responsibility for errors or omissions hereon.

Produced by BoCC - GIS Date: 1/19/2022

Subject Property

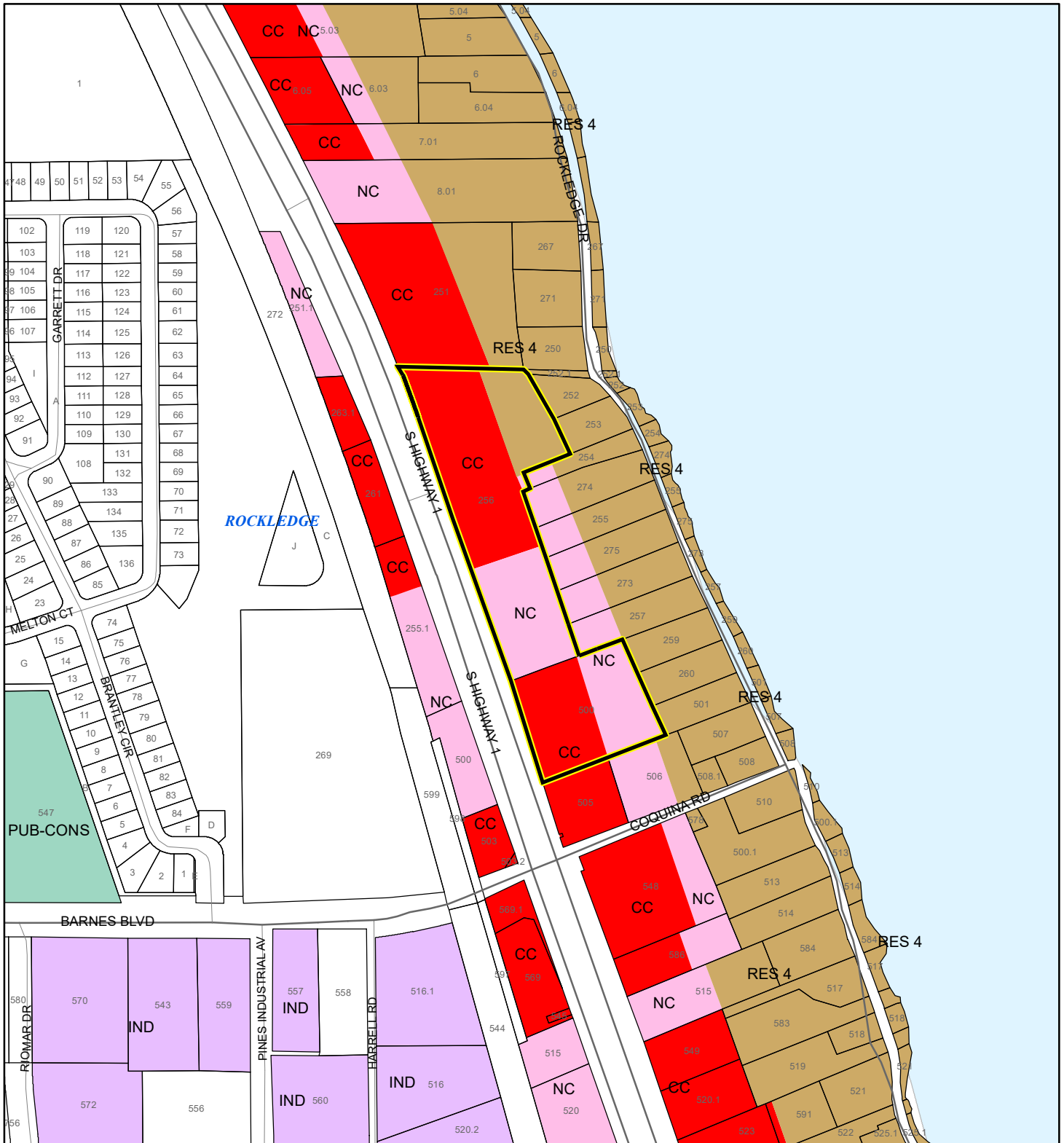
Parcels

Zoning

FUTURE LAND USE MAP

HARVEY REALTY CORPORATION, AND HARVEY'S INDIAN RIVER GROVES, INC.

22Z00004



1:4,800 or 1 inch = 400 feet

Subject Property

Parcels

This map was compiled from recorded documents and does not reflect an actual survey. The Brevard County Board of County Commissioners does not assume responsibility for errors or omissions hereon.

Produced by BoCC - GIS Date: 1/13/2022

AERIAL MAP

HARVEY REALTY CORPORATION, AND HARVEY'S INDIAN RIVER GROVES, INC.

22Z00004




1:4,800 or 1 inch = 400 feet

PHOTO YEAR: 2021

This map was compiled from recorded documents and does not reflect an actual survey. The Brevard County Board of County Commissioners does not assume responsibility for errors or omissions hereon.

Produced by BoCC - GIS Date: 1/13/2022

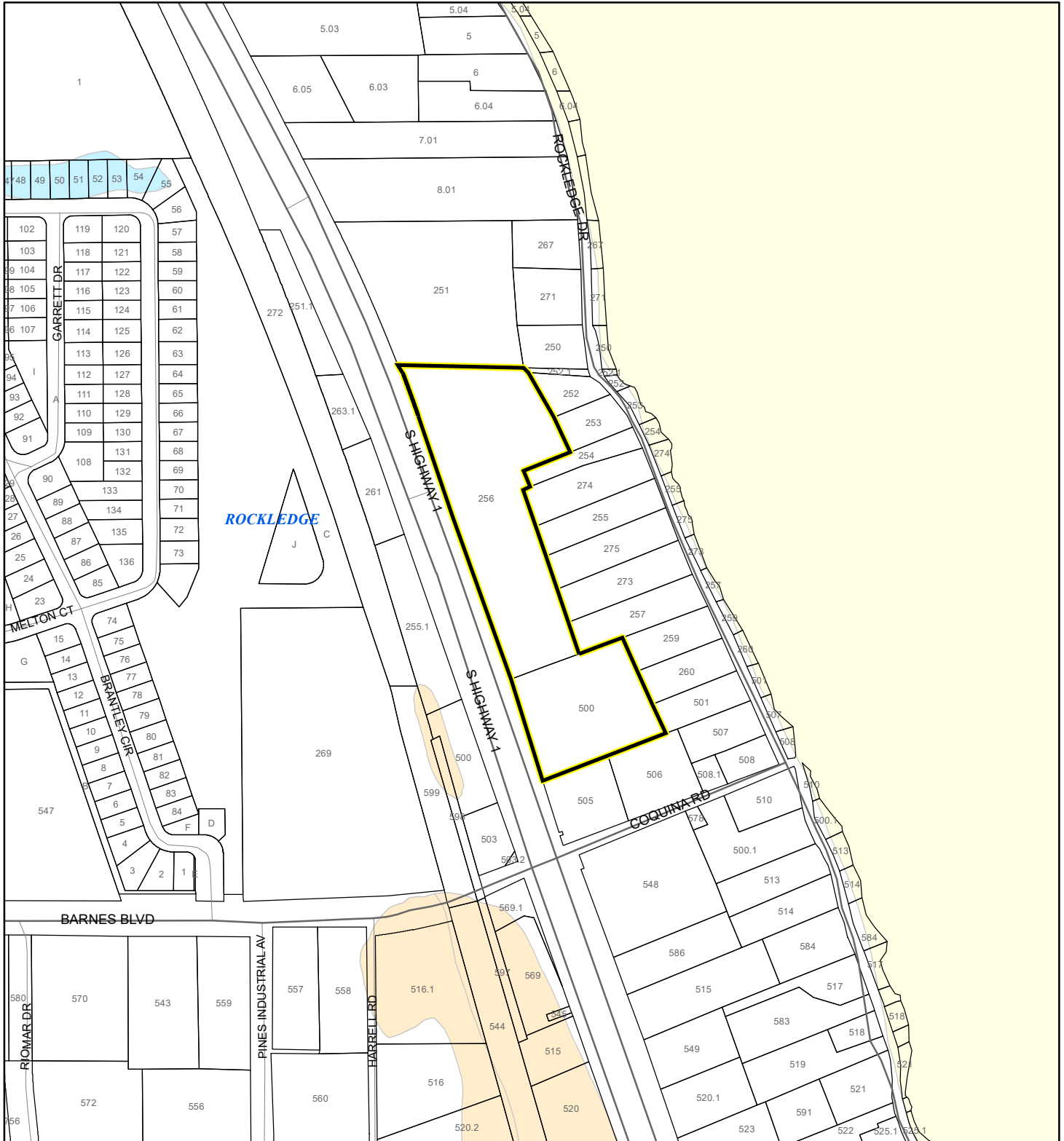
 Subject Property

 Parcels

NWI WETLANDS MAP

HARVEY REALTY CORPORATION, AND HARVEY'S INDIAN RIVER GROVES, INC.

22Z00004



1:4,800 or 1 inch = 400 feet

This map was compiled from recorded documents and does not reflect an actual survey. The Brevard County Board of County Commissioners does not assume responsibility for errors or omissions hereon.

Produced by BoCC - GIS Date: 1/13/2022

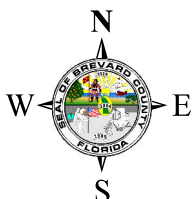
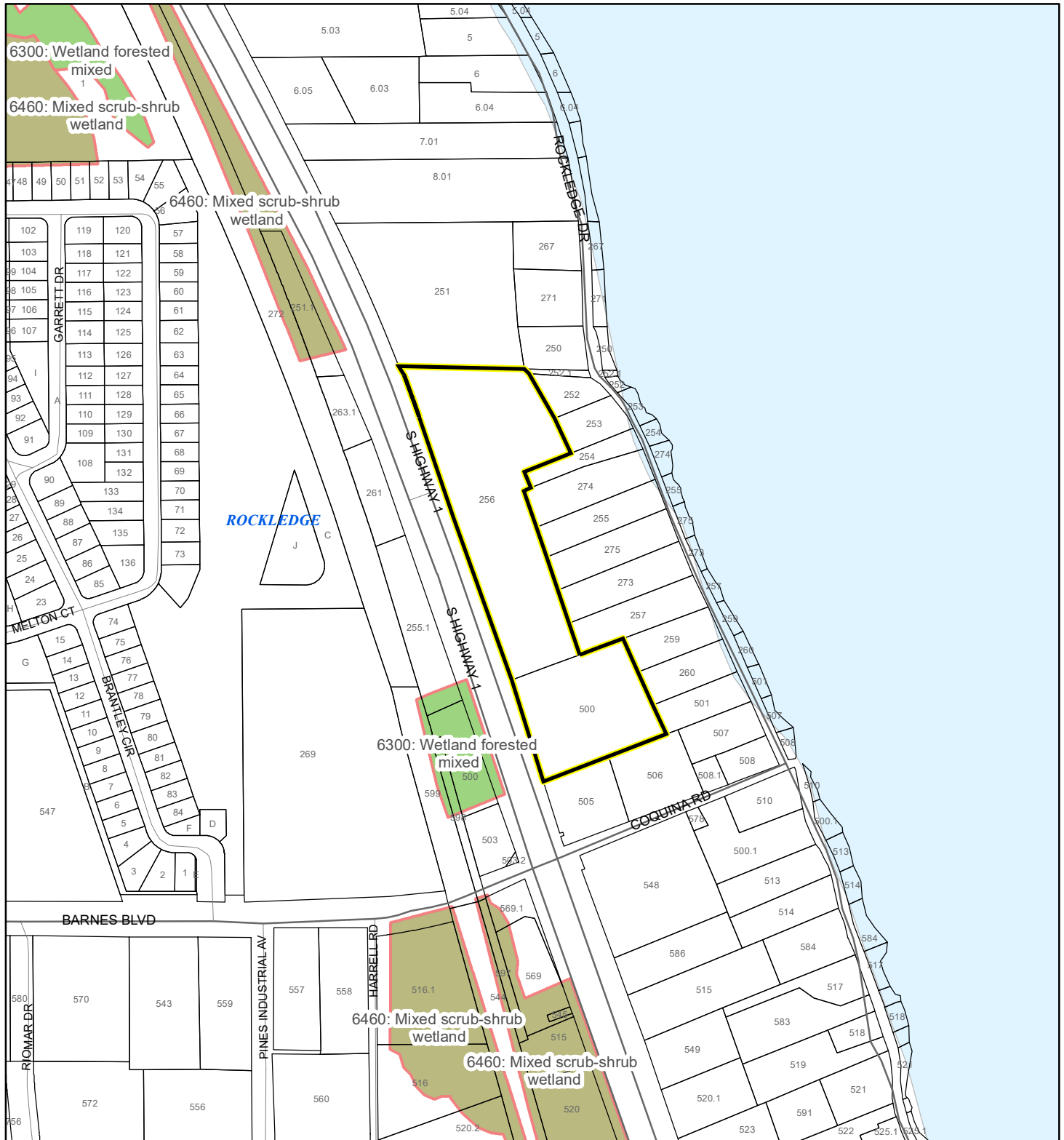
National Wetlands Inventory (NWI)

Estuarine and Marine Deepwater	Freshwater Pond
Estuarine and Marine Wetland	Lake
Freshwater Emergent Wetland	Other
Freshwater Forested/Shrub Wetland	Riverine
	Subject Property
	Parcels

SJRWMD FLUCCS WETLANDS - 6000 Series MAP

HARVEY REALTY CORPORATION, AND HARVEY'S INDIAN RIVER GROVES, INC.

22Z00004



1:4,800 or 1 inch = 400 feet

This map was compiled from recorded documents and does not reflect an actual survey. The Brevard County Board of County Commissioners does not assume responsibility for errors or omissions hereon.

Produced by BoCC - GIS Date: 1/13/2022

SJRWMD FLUCCS WETLANDS

- Wetland Hardwood Forests - Series 6100
- Wetland Coniferous Forest - Series 6200
- Wetland Forested Mixed - Series 6300
- Vegetated Non-Forested Wetlands - Series 6400
- Non-Vegetated Wetland - Series 6500

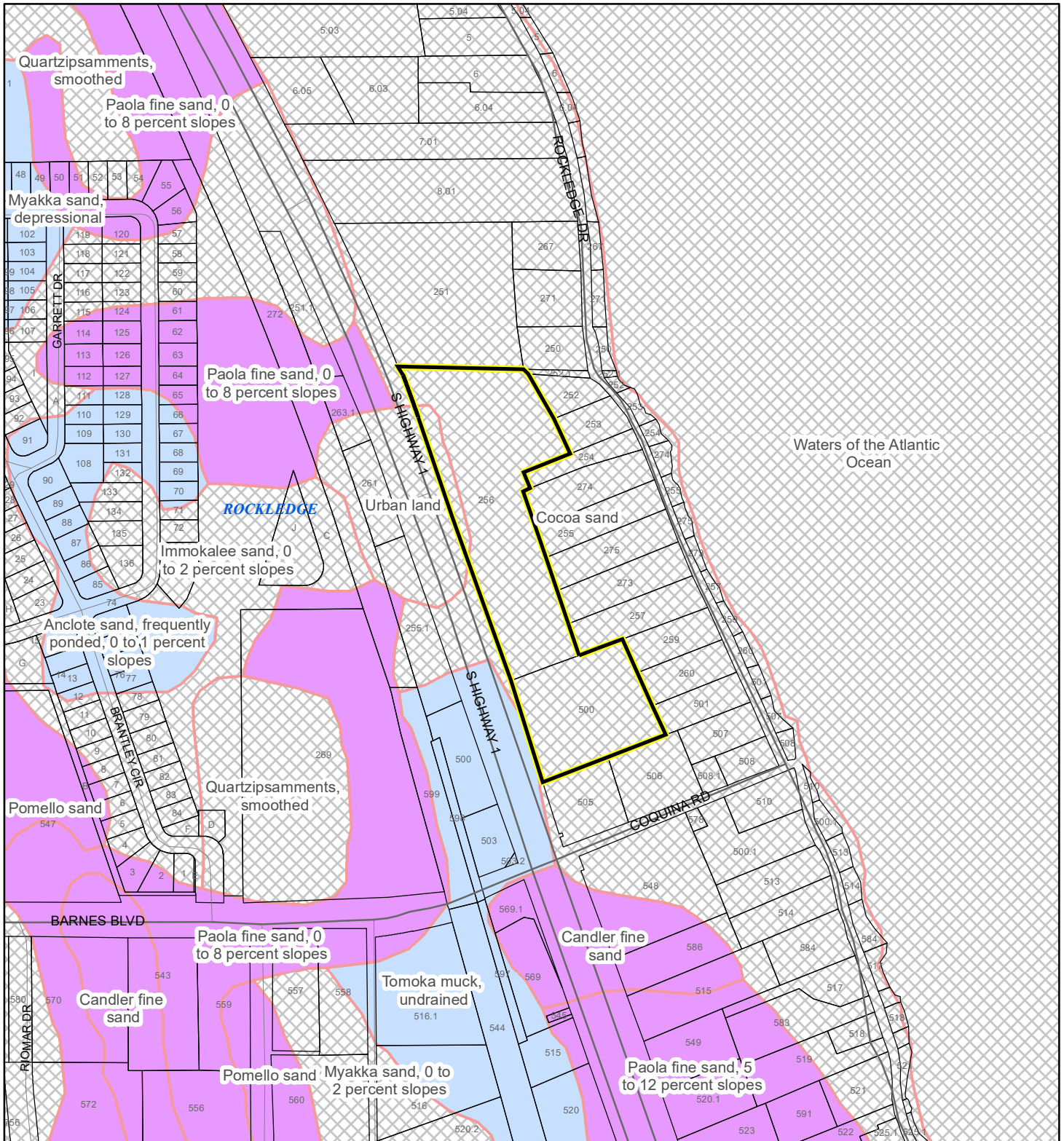
Subject Property

Parcels

USDA SCSSS SOILS MAP

HARVEY REALTY CORPORATION, AND HARVEY'S INDIAN RIVER GROVES, INC.

22Z00004



1:4,800 or 1 inch = 400 feet

This map was compiled from recorded documents and does not reflect an actual survey. The Brevard County Board of County Commissioners does not assume responsibility for errors or omissions herein.

Produced by BoCC - GIS Date: 1/13/2022

USDA SCSSS Soils

- Aquifer and Hydric
- Aquifer
- Hydric
- None

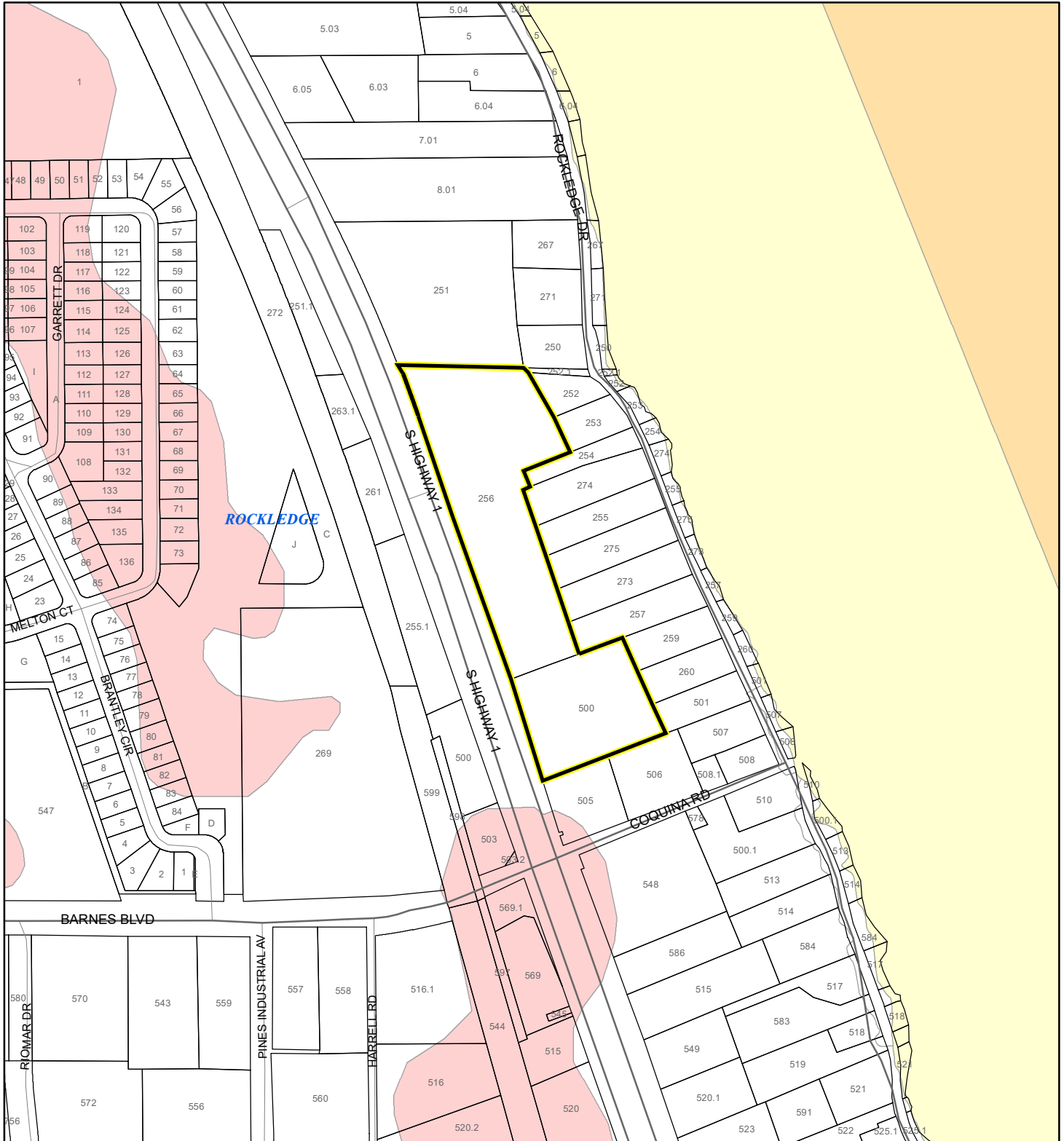
Subject Property

Parcels

FEMA FLOOD ZONES MAP

HARVEY REALTY CORPORATION, AND HARVEY'S INDIAN RIVER GROVES, INC.

22Z00004



1:4,800 or 1 inch = 400 feet

This map was compiled from recorded documents and does not reflect an actual survey. The Brevard County Board of County Commissioners does not assume responsibility for errors or omissions hereon.

Produced by BoCC - GIS Date: 1/13/2022

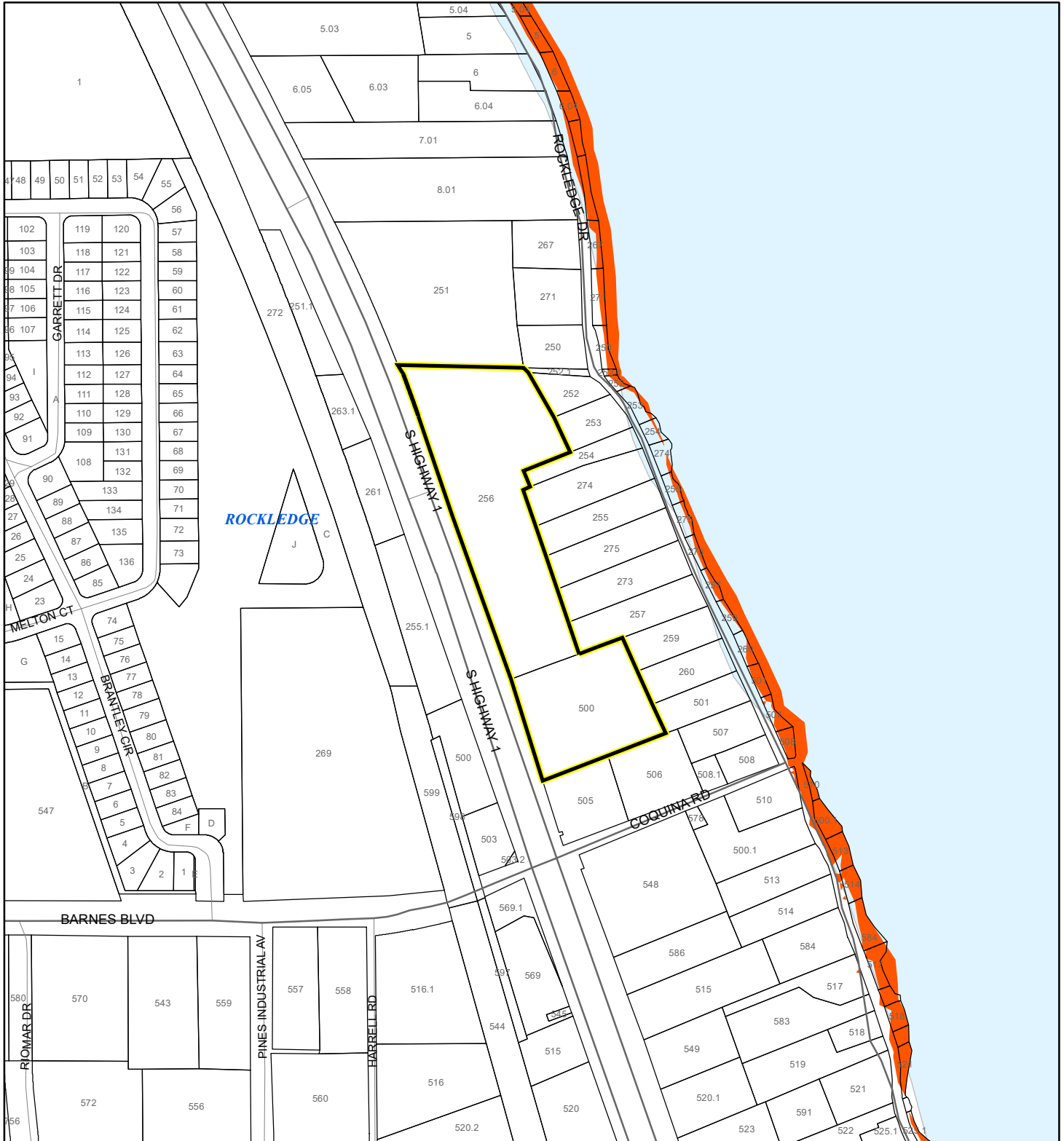
FEMA Flood Zones

- | | | |
|--|--|---|
| A | AO | X |
| AE | Open Water | |
| AH | VE | |
| Subject Property | Parcels | |

COASTAL HIGH HAZARD AREA MAP

HARVEY REALTY CORPORATION, AND HARVEY'S INDIAN RIVER GROVES, INC.

22Z00004



1:4,800 or 1 inch = 400 feet

This map was compiled from recorded documents and does not reflect an actual survey. The Brevard County Board of County Commissioners does not assume responsibility for errors or omissions hereon.

Produced by BoCC - GIS Date: 1/13/2022

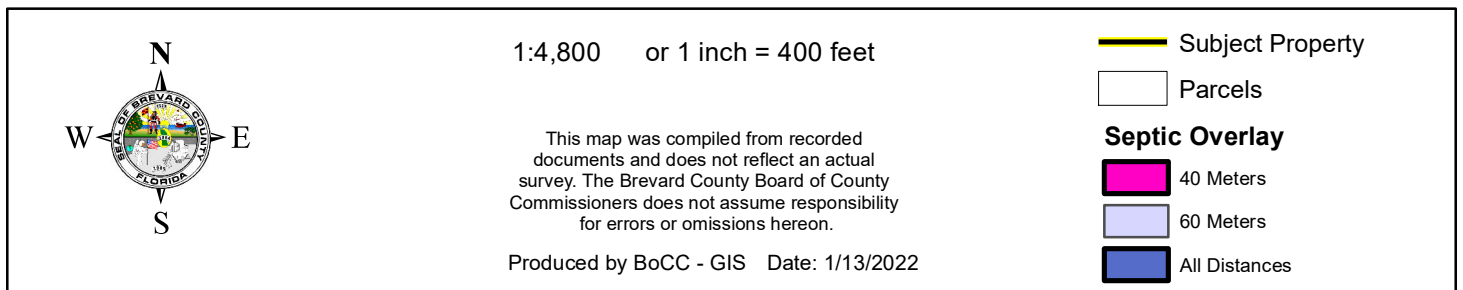
Subject Property

Parcels

Coastal High Hazard Area

SurgeZoneCat1

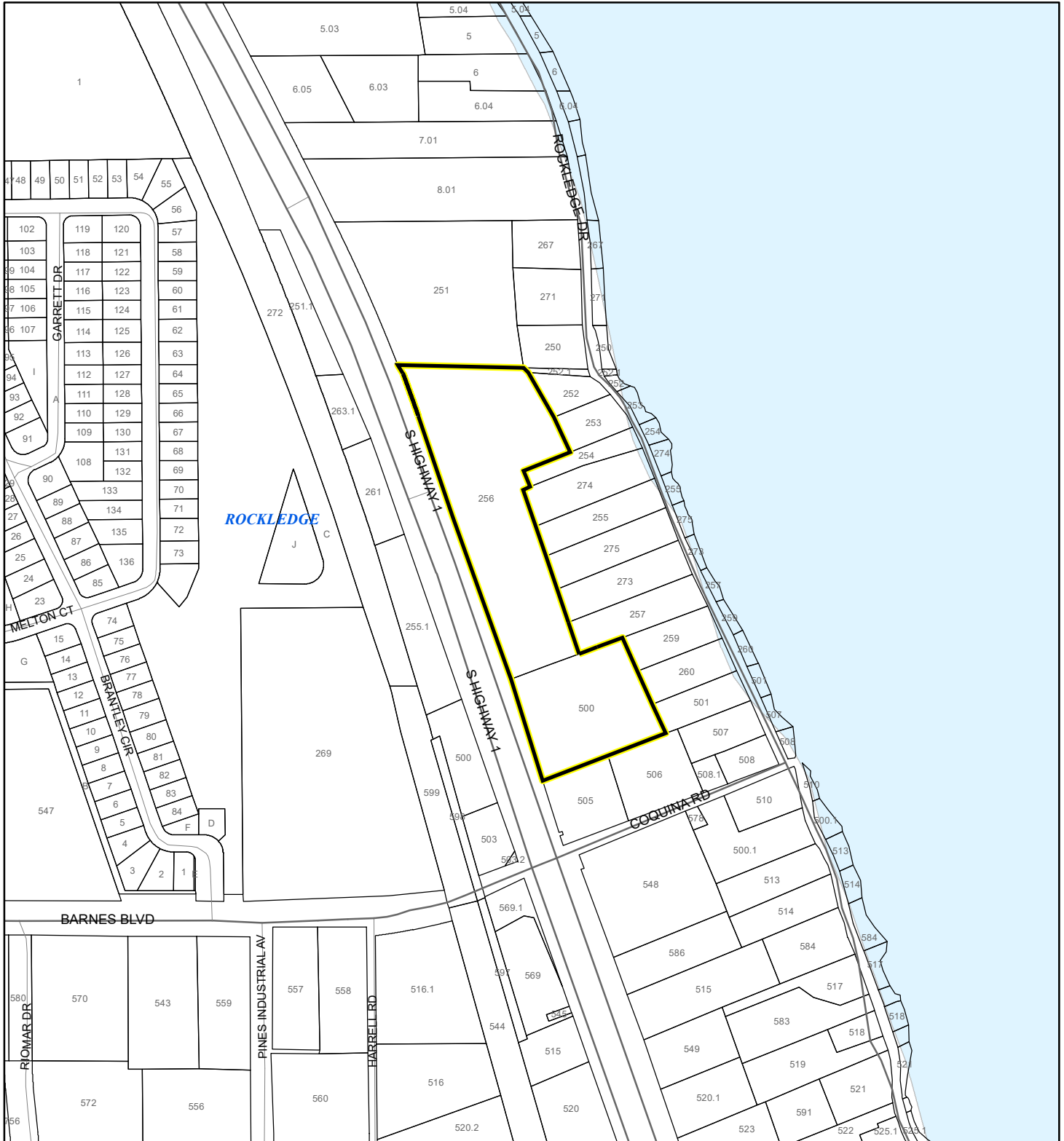
22Z00004



EAGLE NESTS MAP

HARVEY REALTY CORPORATION, AND HARVEY'S INDIAN RIVER GROVES, INC.

22Z00004



1:4,800 or 1 inch = 400 feet

This map was compiled from recorded documents and does not reflect an actual survey. The Brevard County Board of County Commissioners does not assume responsibility for errors or omissions hereon.

Produced by BoCC - GIS Date: 1/13/2022

 Subject Property

 Parcels

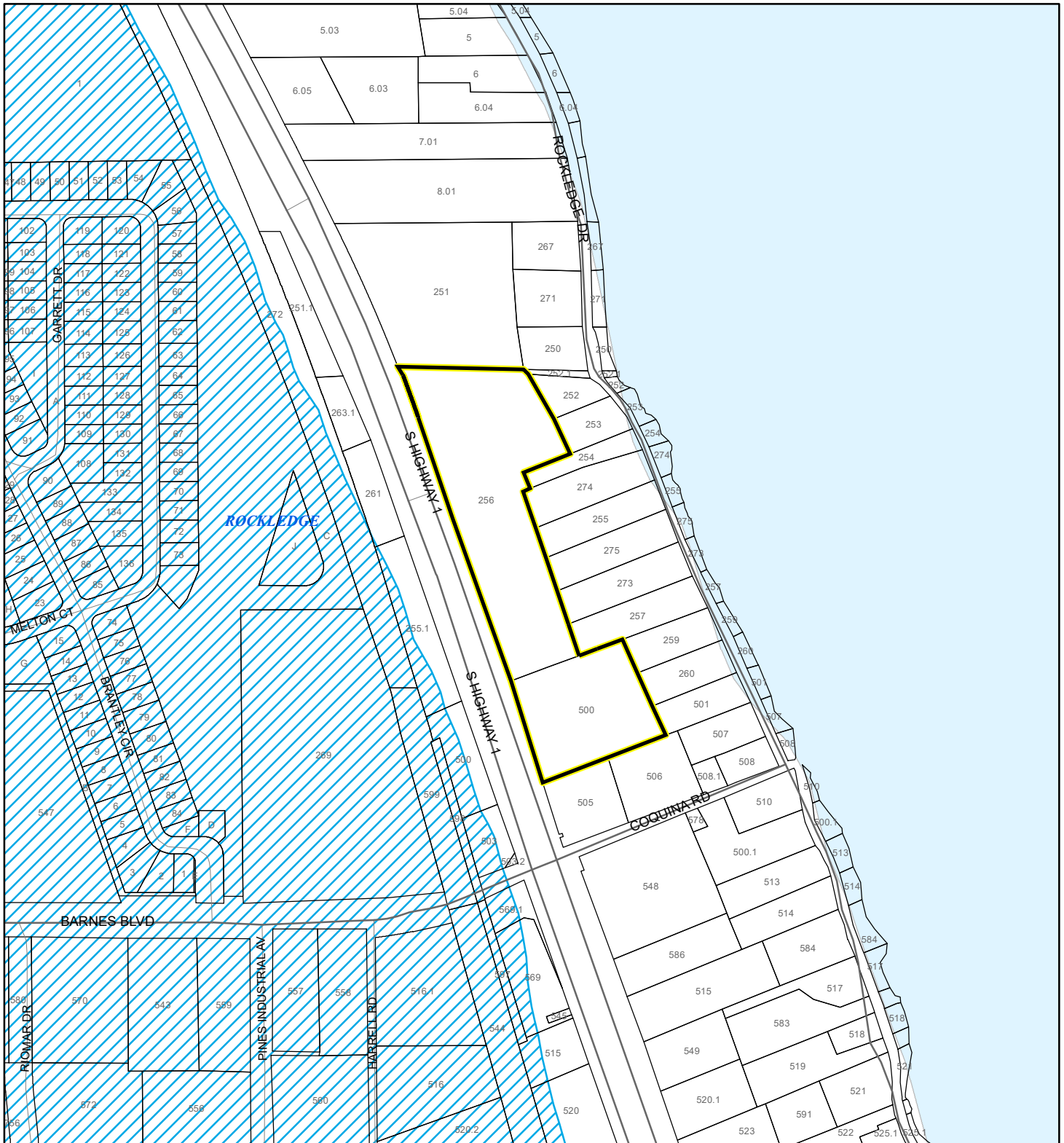


Eagle Nests
FWS 2010

SCRUB JAY OCCUPANCY MAP

HARVEY REALTY CORPORATION, AND HARVEY'S INDIAN RIVER GROVES, INC.




22Z00004



1:4,800 or 1 inch = 400 feet

This map was compiled from recorded documents and does not reflect an actual survey. The Brevard County Board of County Commissioners does not assume responsibility for errors or omissions hereon.

Produced by BoCC - GIS Date: 1/13/2022

-  Subject Property
-  Parcels
-  Scrub Jay Occupancy

22Z00004

