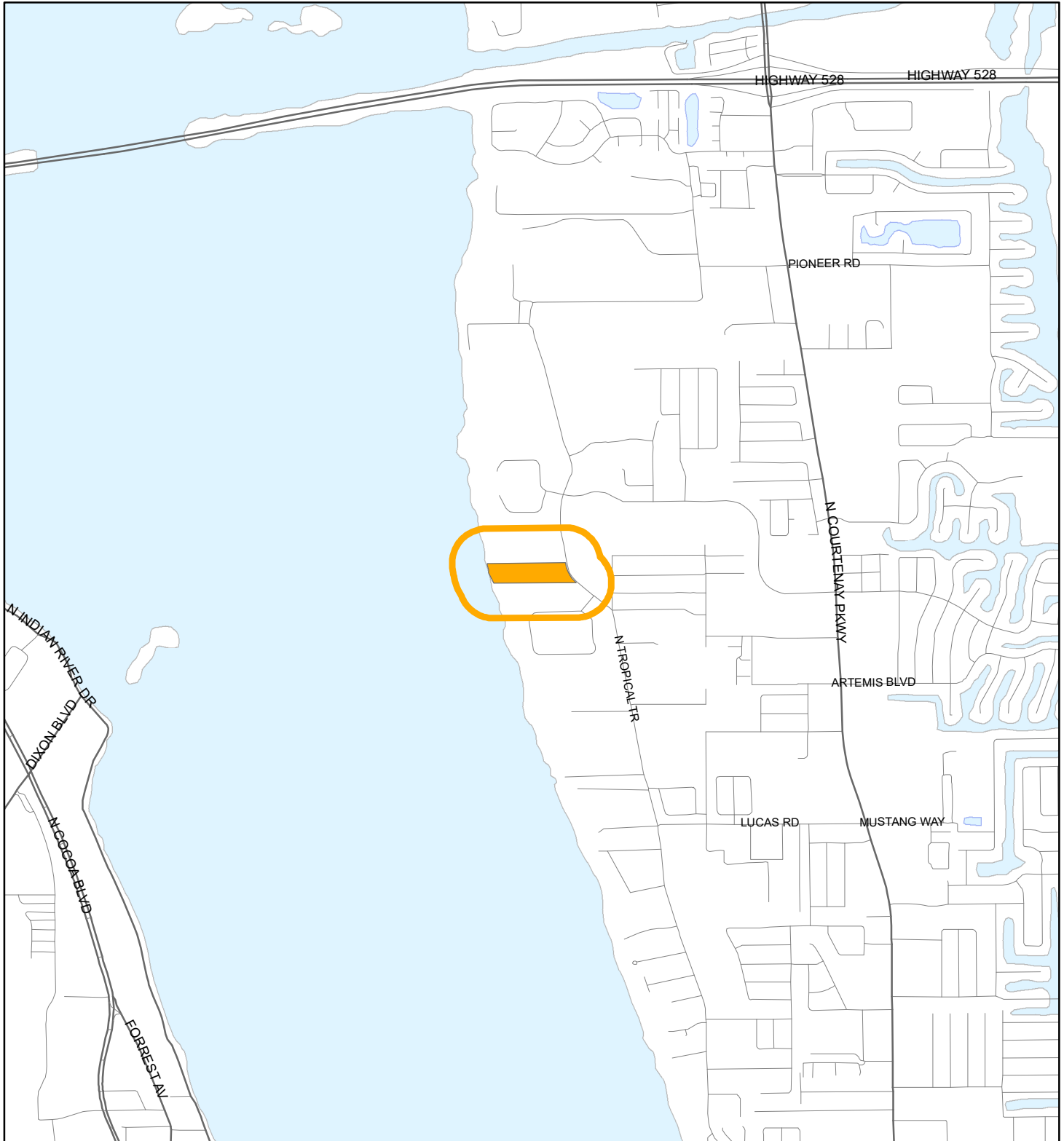


LOCATION MAP

CLAIR JOHN JAUSSI AND JANET HAMILTON JAUSSI REVOCABLE TRUST
22PZ00002





1:24,000 or 1 inch = 2,000 feet

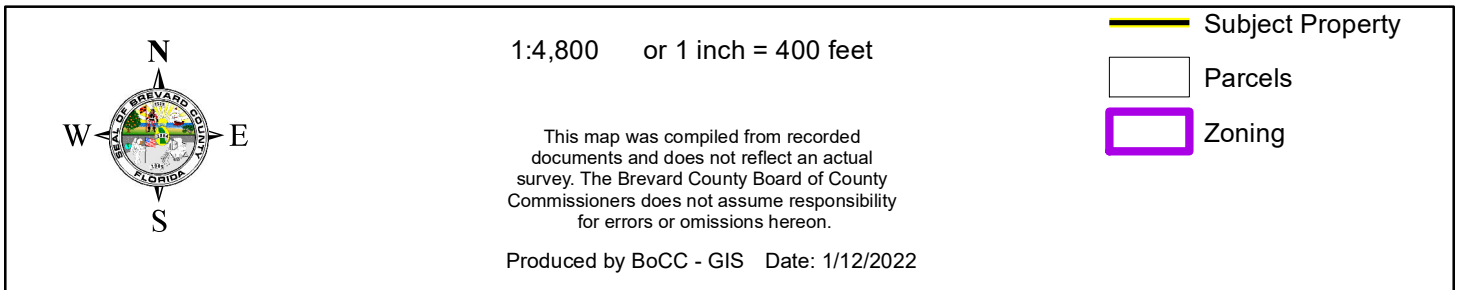
Buffer Distance: 500 feet

This map was compiled from recorded documents and does not reflect an actual survey. The Brevard County Board of County Commissioners does not assume responsibility for errors or omissions hereon.

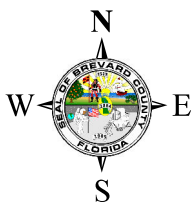
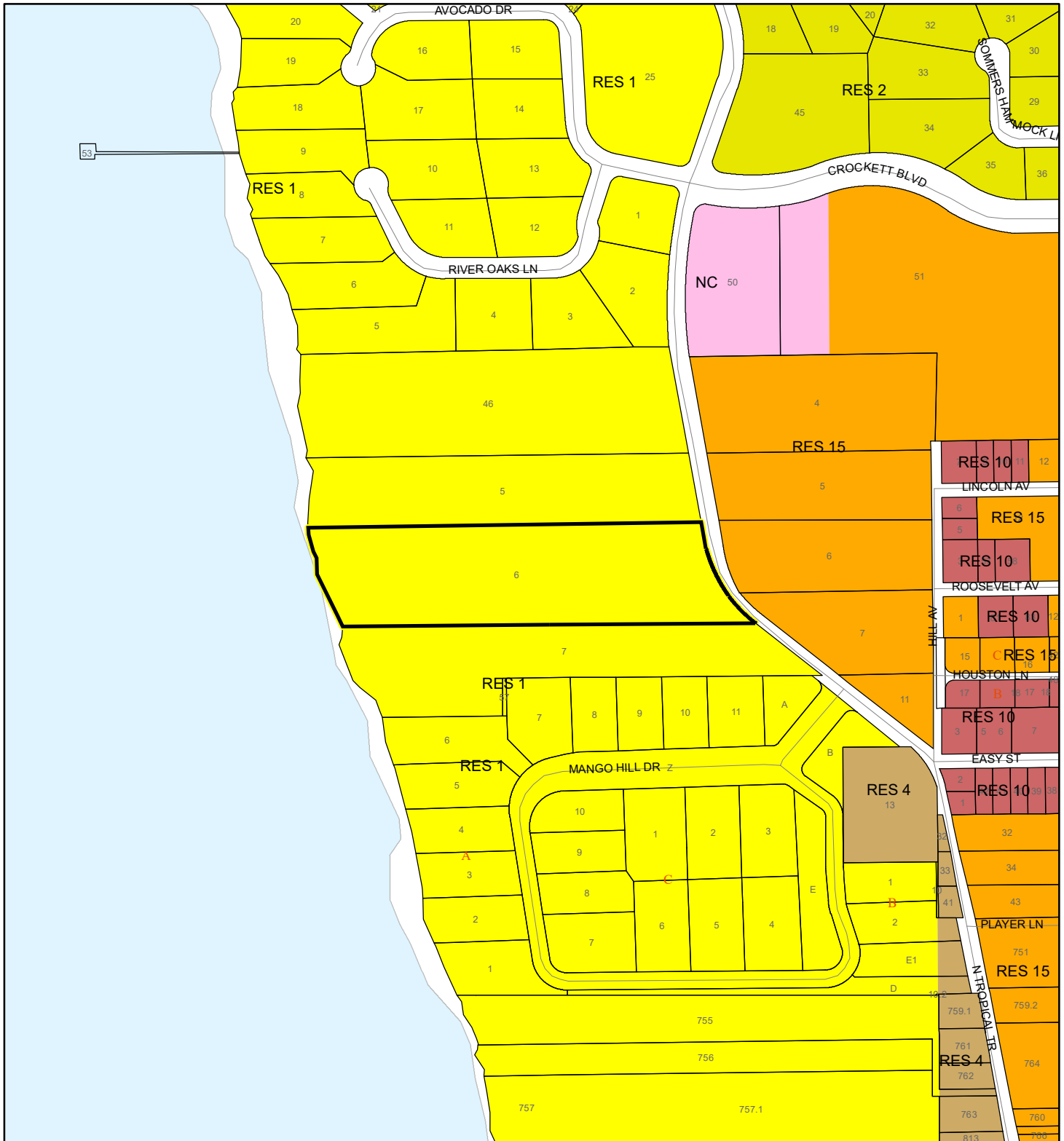
Produced by BoCC - GIS Date: 1/12/2022

 Buffer
 Subject Property

22PZ00002



22PZ00002



1:4,800 or 1 inch = 400 feet

This map was compiled from recorded documents and does not reflect an actual survey. The Brevard County Board of County Commissioners does not assume responsibility for errors or omissions hereon.

Produced by BoCC - GIS Date: 1/12/2022

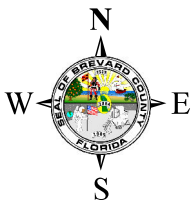
Subject Property

☐ Parcels

AERIAL MAP

CLAIR JOHN JAUSSI AND JANET HAMILTON JAUSSI REVOCABLE TRUST

22PZ00002




1:4,800 or 1 inch = 400 feet

PHOTO YEAR: 2021

This map was compiled from recorded documents and does not reflect an actual survey. The Brevard County Board of County Commissioners does not assume responsibility for errors or omissions hereon.

Produced by BoCC - GIS Date: 1/12/2022

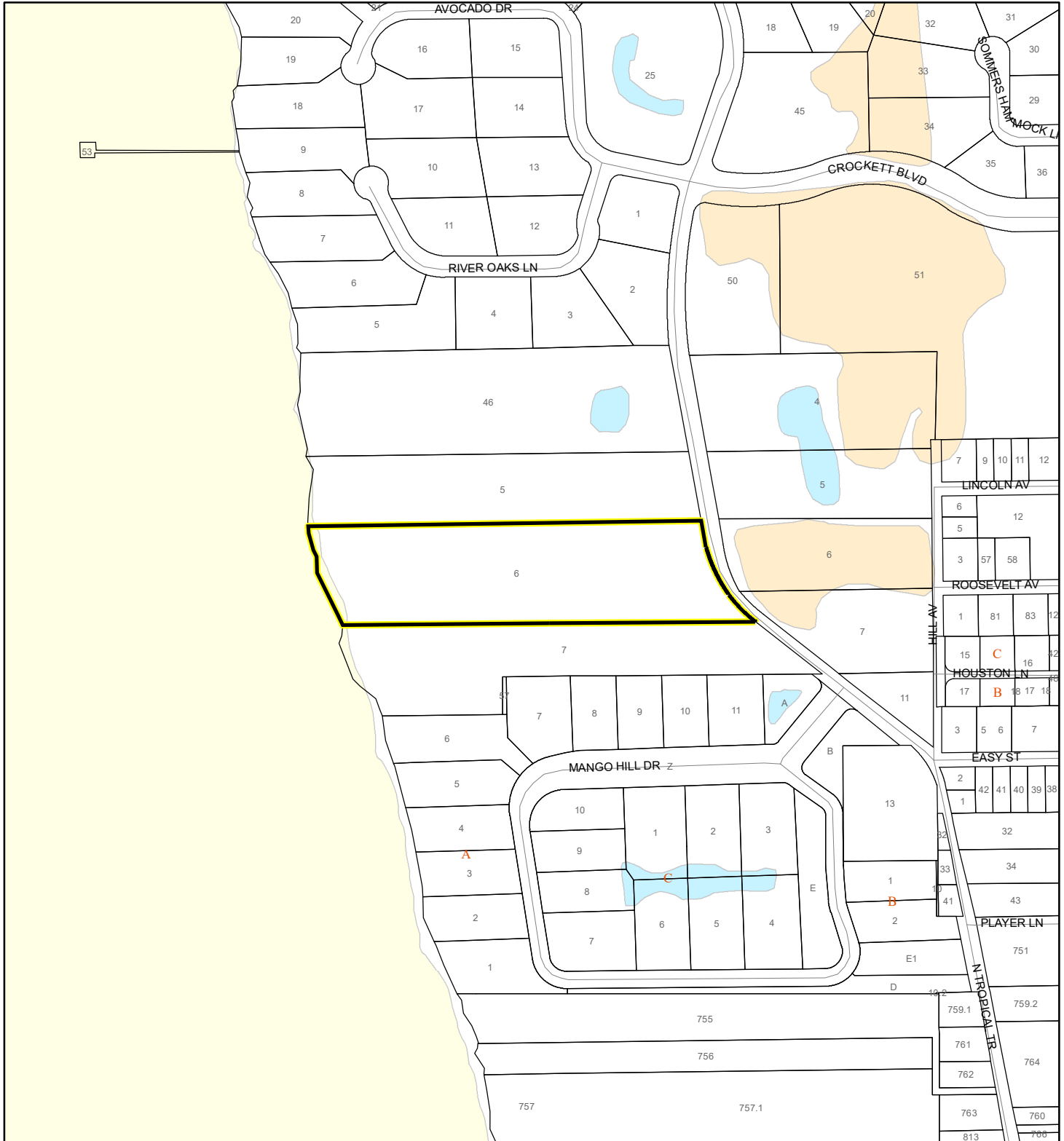
 Subject Property

 Parcels

NWI WETLANDS MAP

CLAIR JOHN JAUSSI AND JANET HAMILTON JAUSSI REVOCABLE TRUST

22PZ00002



1:4,800 or 1 inch = 400 feet

This map was compiled from recorded documents and does not reflect an actual survey. The Brevard County Board of County Commissioners does not assume responsibility for errors or omissions hereon.

Produced by BoCC - GIS Date: 1/12/2022

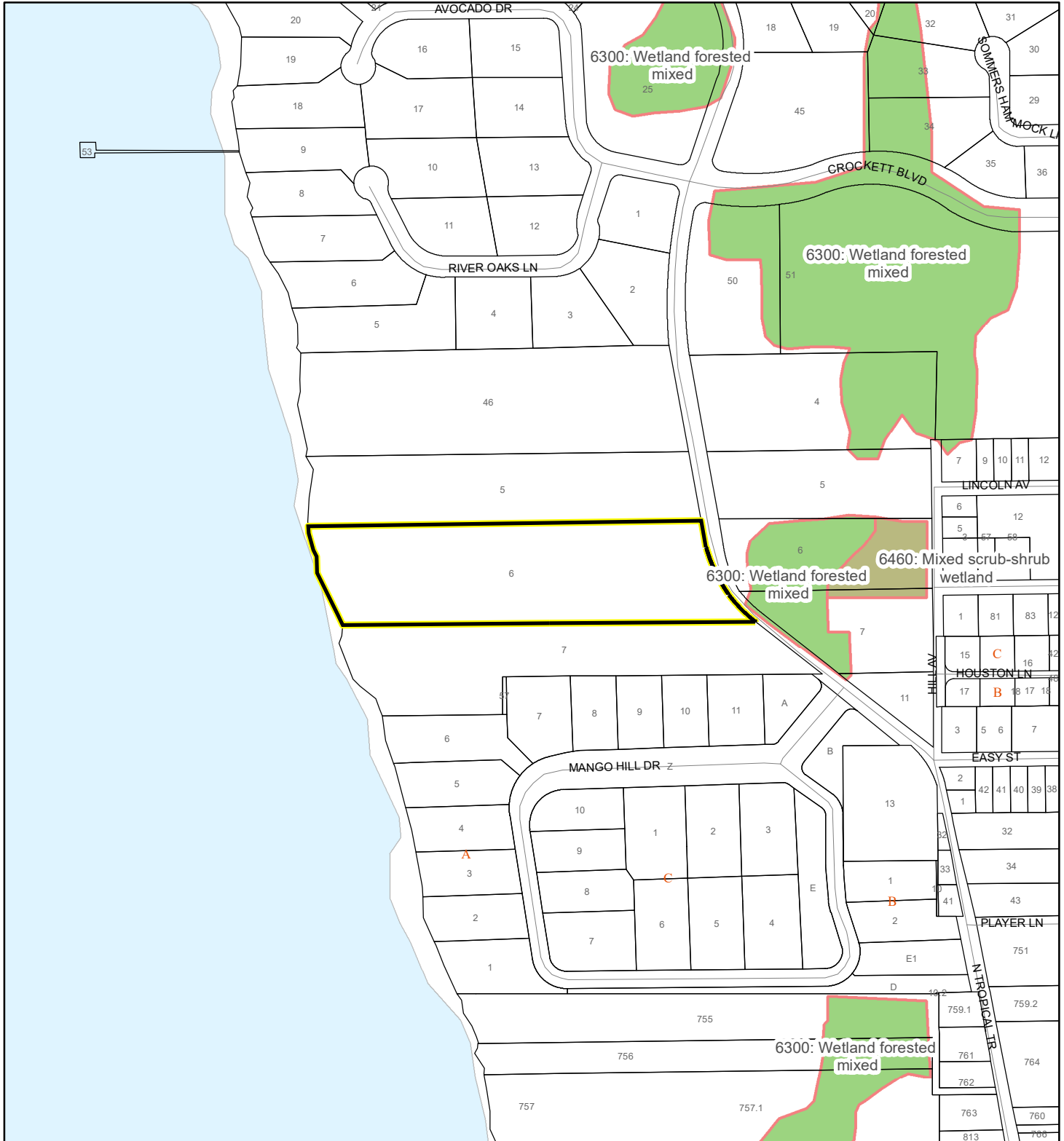
National Wetlands Inventory (NWI)

Estuarine and Marine Deepwater	Freshwater Pond
Estuarine and Marine Wetland	Lake
Freshwater Emergent Wetland	Other
Freshwater Forested/Shrub Wetland	Riverine
Subject Property	
Parcels	

SJRWMD FLUCCS WETLANDS - 6000 Series MAP

CLAIR JOHN JAUSSI AND JANET HAMILTON JAUSSI REVOCABLE TRUST

22PZ00002



1:4,800 or 1 inch = 400 feet

This map was compiled from recorded documents and does not reflect an actual survey. The Brevard County Board of County Commissioners does not assume responsibility for errors or omissions hereon.

Produced by BoCC - GIS Date: 1/12/2022

SJRWMD FLUCCS WETLANDS

- Wetland Hardwood Forests - Series 6100
- Wetland Coniferous Forest - Series 6200
- Wetland Forested Mixed - Series 6300
- Vegetated Non-Forested Wetlands - Series 6400
- Non-Vegetated Wetland - Series 6500

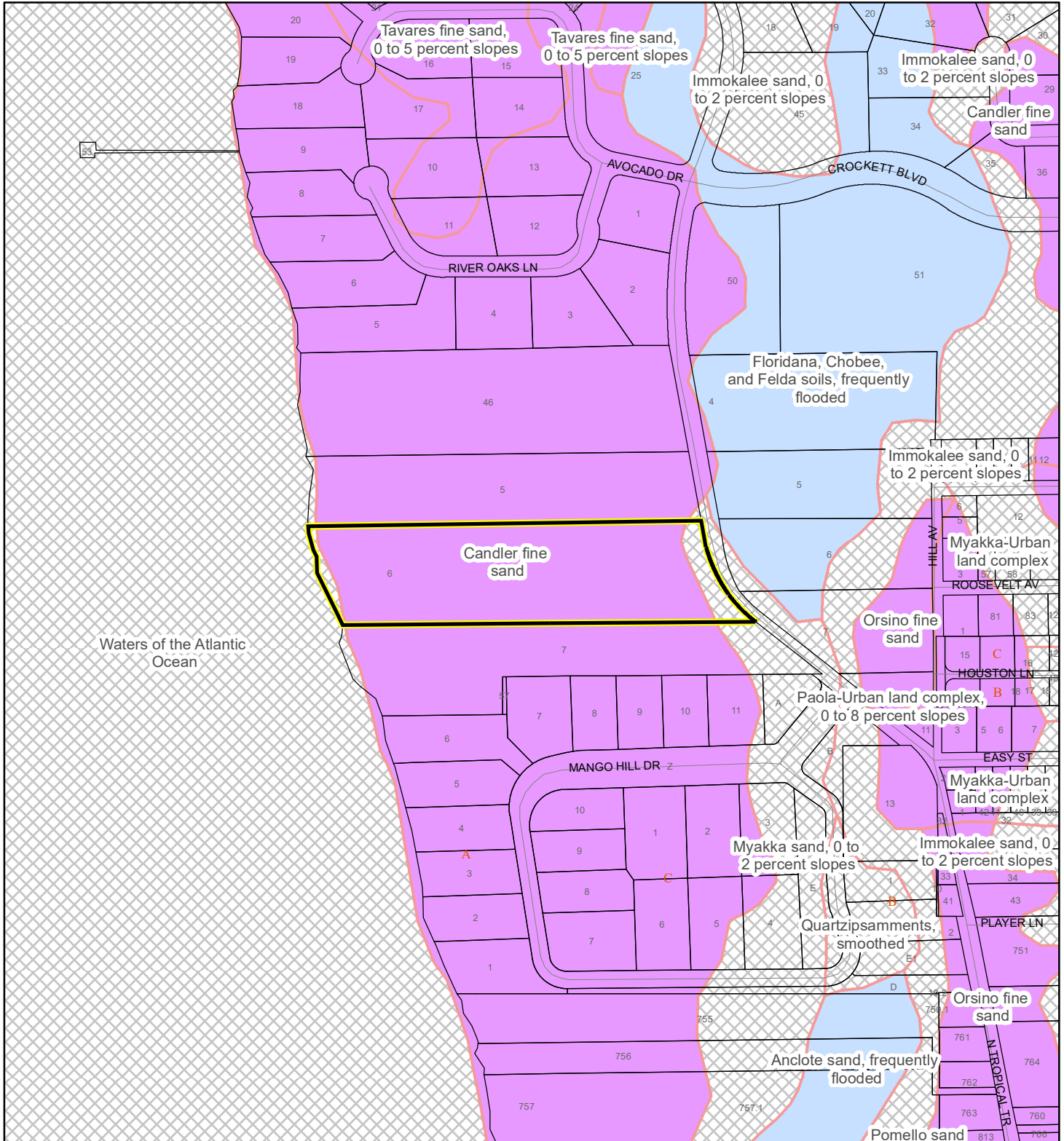
Subject Property

Parcels

USDA SCSSS SOILS MAP

CLAIR JOHN JAUSSI AND JANET HAMILTON JAUSSI REVOCABLE TRUST

22PZ00002



1:4,800 or 1 inch = 400 feet

This map was compiled from recorded documents and does not reflect an actual survey. The Brevard County Board of County Commissioners does not assume responsibility for errors or omissions hereon.

Produced by BoCC - GIS Date: 1/12/2022

USDA SCSSS Soils

- Aquifer and Hydric
- Aquifer
- Hydric
- None

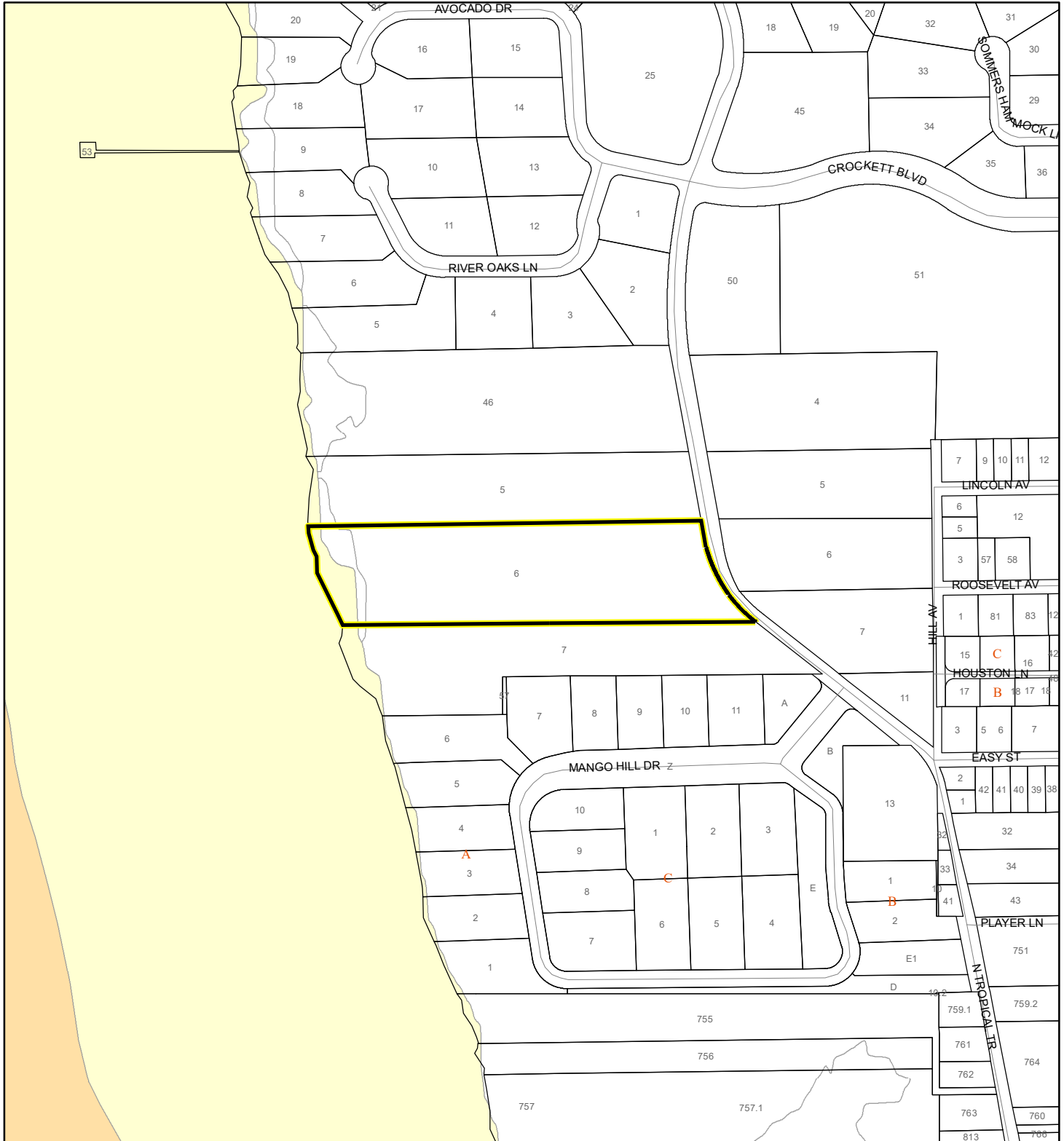
Subject Property

Parcels

FEMA FLOOD ZONES MAP

CLAIR JOHN JAUSSI AND JANET HAMILTON JAUSSI REVOCABLE TRUST

22PZ00002



1:4,800 or 1 inch = 400 feet

This map was compiled from recorded documents and does not reflect an actual survey. The Brevard County Board of County Commissioners does not assume responsibility for errors or omissions hereon.

Produced by BoCC - GIS Date: 1/12/2022

FEMA Flood Zones

A	AO	X
AE	Open Water	
AH	VE	
Subject Property	Parcels	

COASTAL HIGH HAZARD AREA MAP

CLAIR JOHN JAUSSI AND JANET HAMILTON JAUSSI REVOCABLE TRUST

22PZ00002



1:4,800 or 1 inch = 400 feet

This map was compiled from recorded documents and does not reflect an actual survey. The Brevard County Board of County Commissioners does not assume responsibility for errors or omissions hereon.

Produced by BoCC - GIS Date: 1/12/2022

Subject Property

Parcels

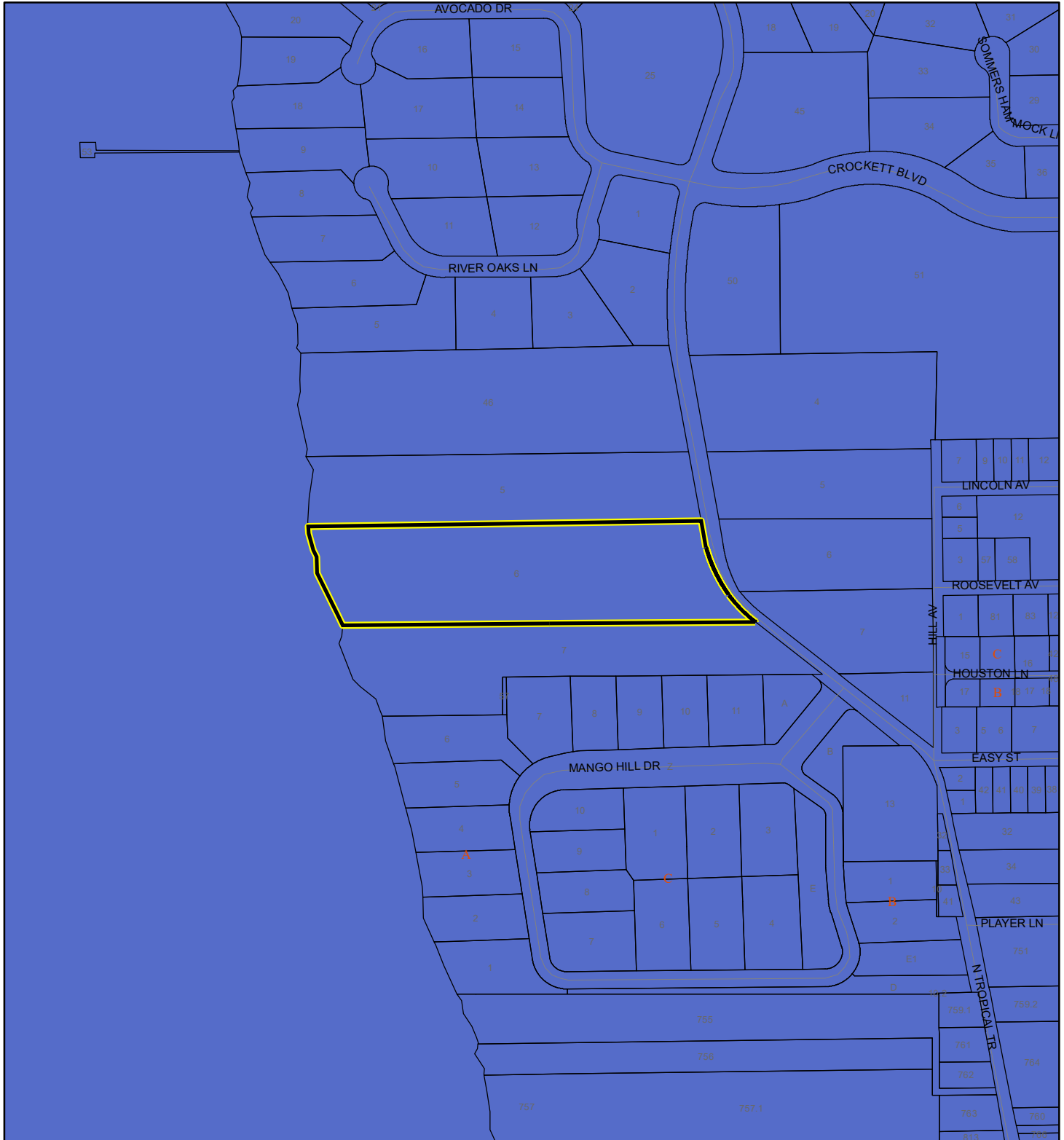
Coastal High Hazard Area

SurgeZoneCat1

INDIAN RIVER LAGOON SEPTIC OVERLAY MAP

CLAIR JOHN JAUSSI AND JANET HAMILTON JAUSSI REVOCABLE TRUST

22PZ00002



1:4,800 or 1 inch = 400 feet

This map was compiled from recorded documents and does not reflect an actual survey. The Brevard County Board of County Commissioners does not assume responsibility for errors or omissions hereon.

Produced by BoCC - GIS Date: 1/12/2022

 Subject Property

 Parcels

Septic Overlay

 40 Meters

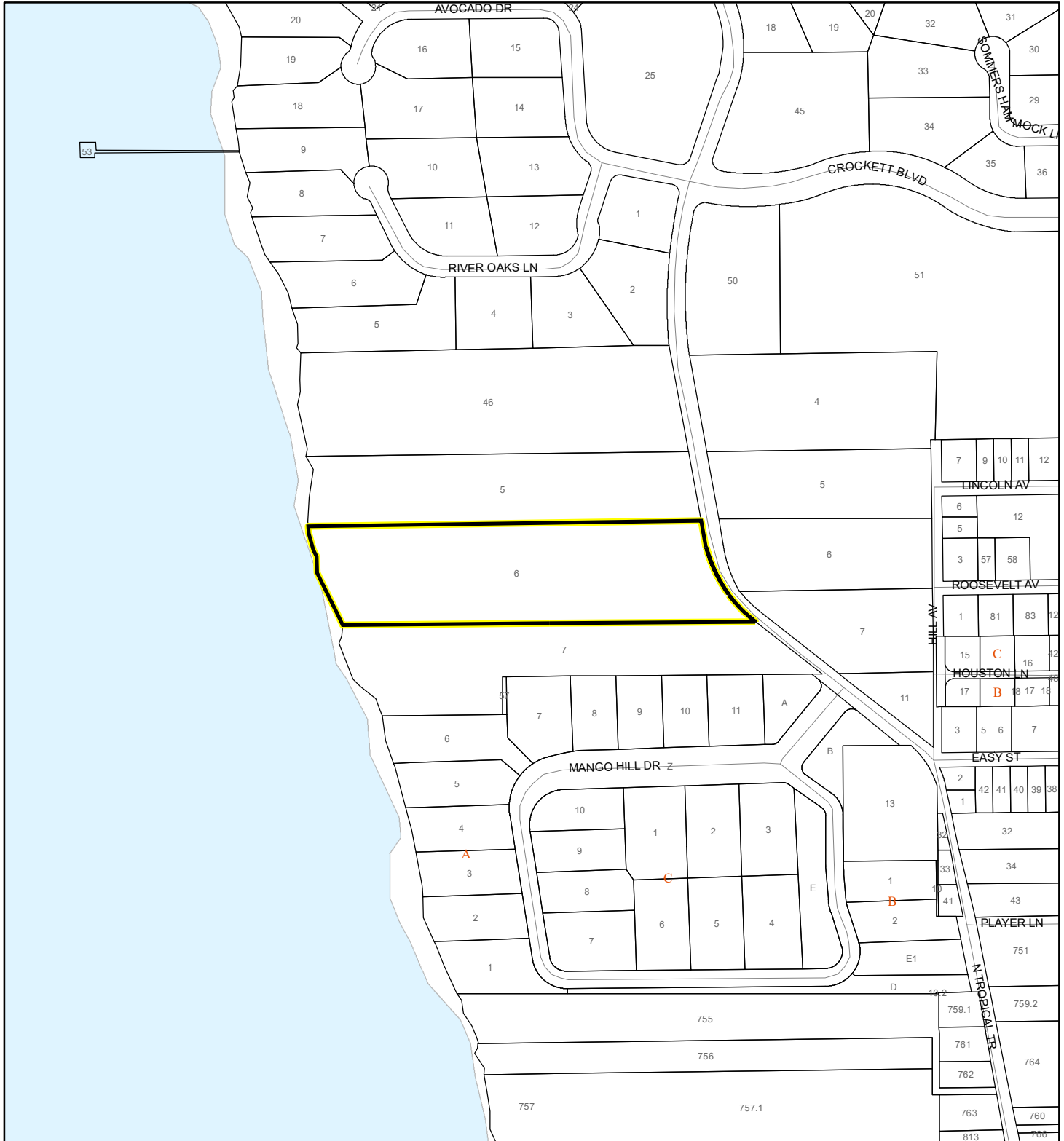
 60 Meters

 All Distances

EAGLE NESTS MAP

CLAIR JOHN JAUSSI AND JANET HAMILTON JAUSSI REVOCABLE TRUST

22PZ00002



1:4,800 or 1 inch = 400 feet

This map was compiled from recorded documents and does not reflect an actual survey. The Brevard County Board of County Commissioners does not assume responsibility for errors or omissions hereon.

Produced by BoCC - GIS Date: 1/12/2022

 Subject Property

 Parcels

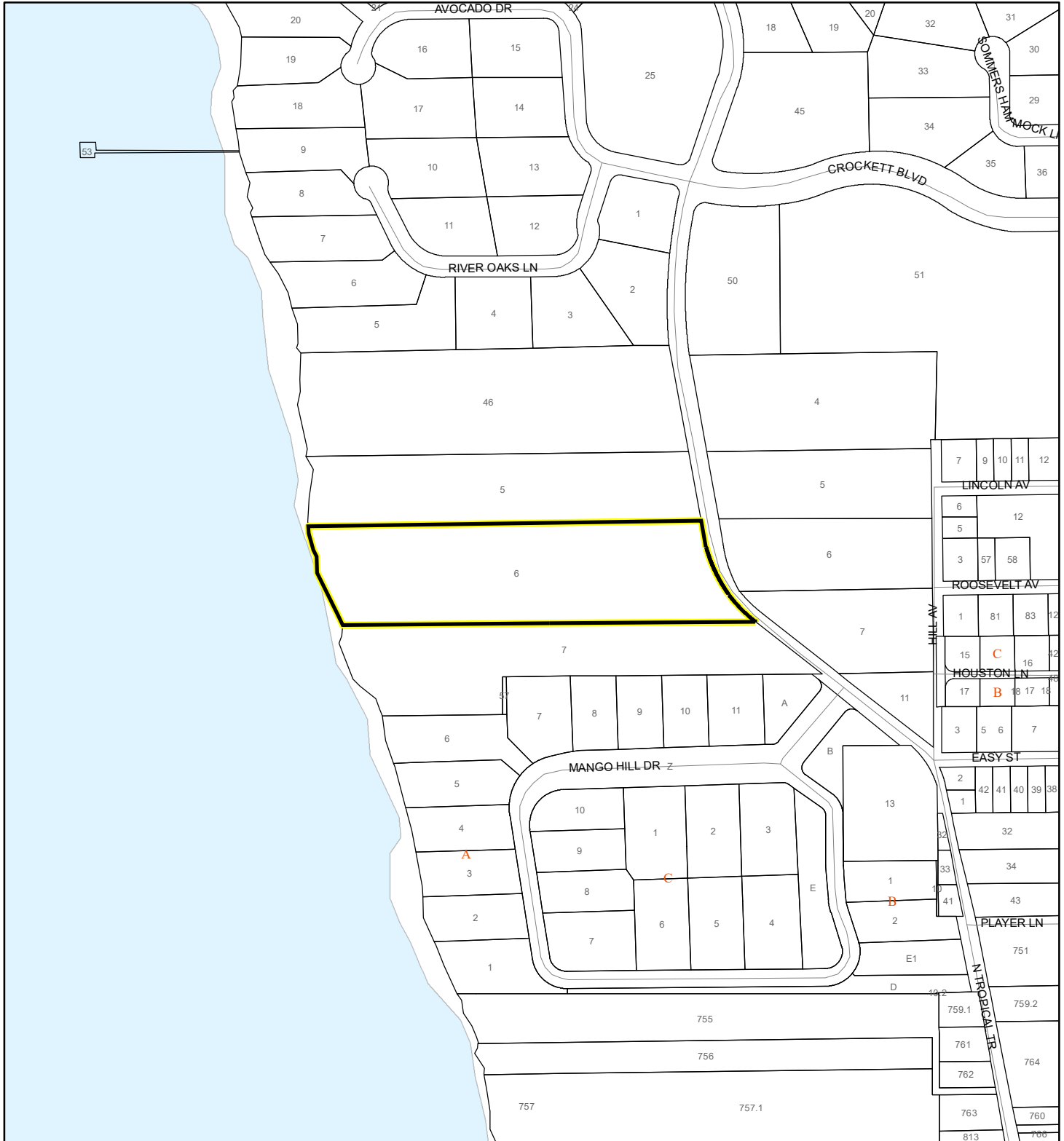


Eagle Nests
FWS 2010

SCRUB JAY OCCUPANCY MAP

CLAIR JOHN JAUSSI AND JANET HAMILTON JAUSSI REVOCABLE TRUST

22PZ00002



1:4,800 or 1 inch = 400 feet

This map was compiled from recorded documents and does not reflect an actual survey. The Brevard County Board of County Commissioners does not assume responsibility for errors or omissions hereon.

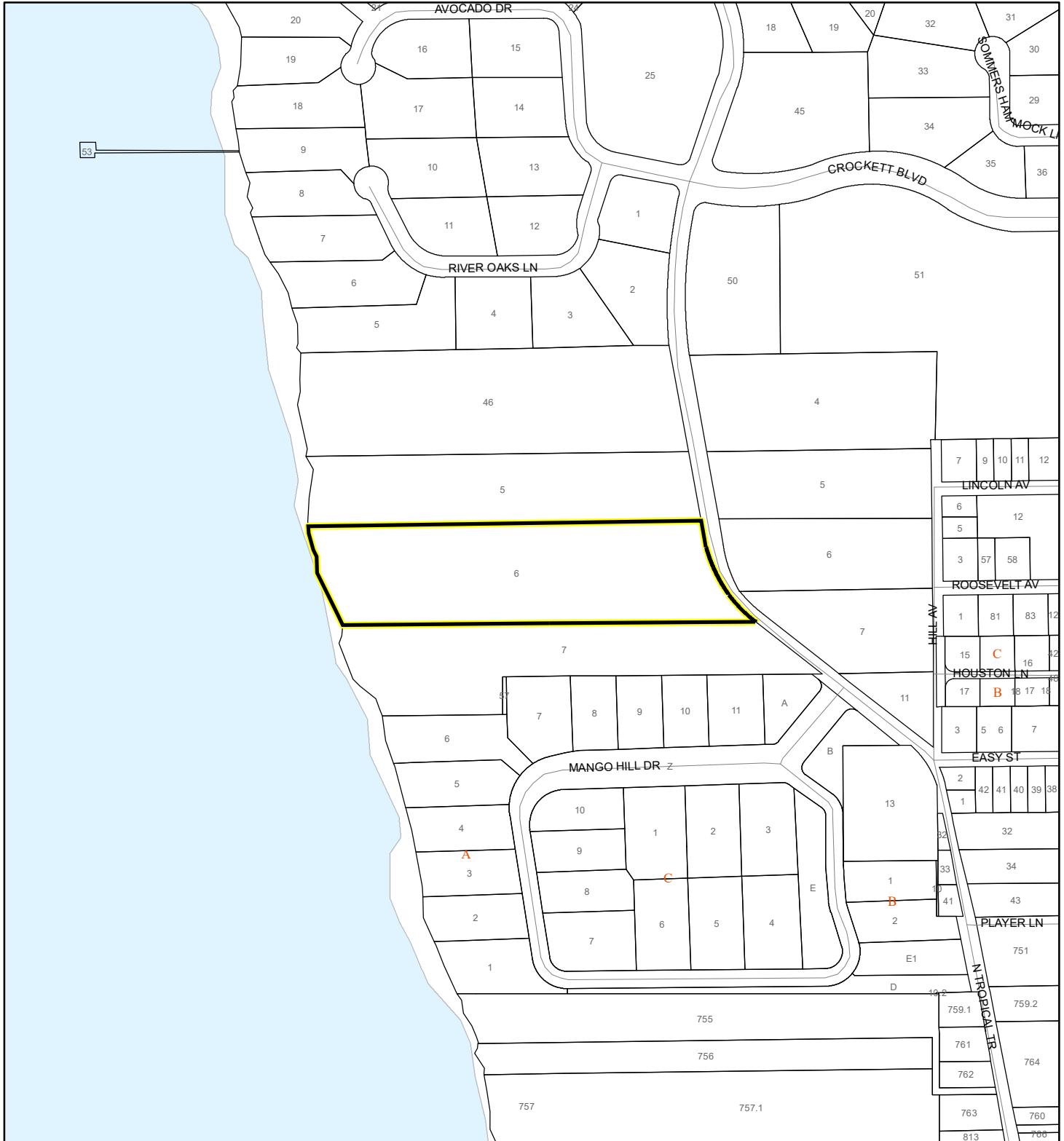
Produced by BoCC - GIS Date: 1/12/2022

- Subject Property
- Parcels
- Scrub Jay Occupancy

SJRWMD FLUCCS UPLAND FORESTS - 4000 Series MAP

CLAIR JOHN JAUSSI AND JANET HAMILTON JAUSSI REVOCABLE TRUST

22PZ00002



1:4,800 or 1 inch = 400 feet

This map was compiled from recorded documents and does not reflect an actual survey. The Brevard County Board of County Commissioners does not assume responsibility for errors or omissions hereon.

Produced by BoCC - GIS Date: 1/12/2022

SJRWMD FLUCCS Upland Forests

- Upland Coniferous Forest - 4100 Series
- Upland Hardwood Forest - 4200 Series
- Upland Mixed Forest - 4300 Series
- Tree Plantations - 4400 Series

Subject Property Parcels