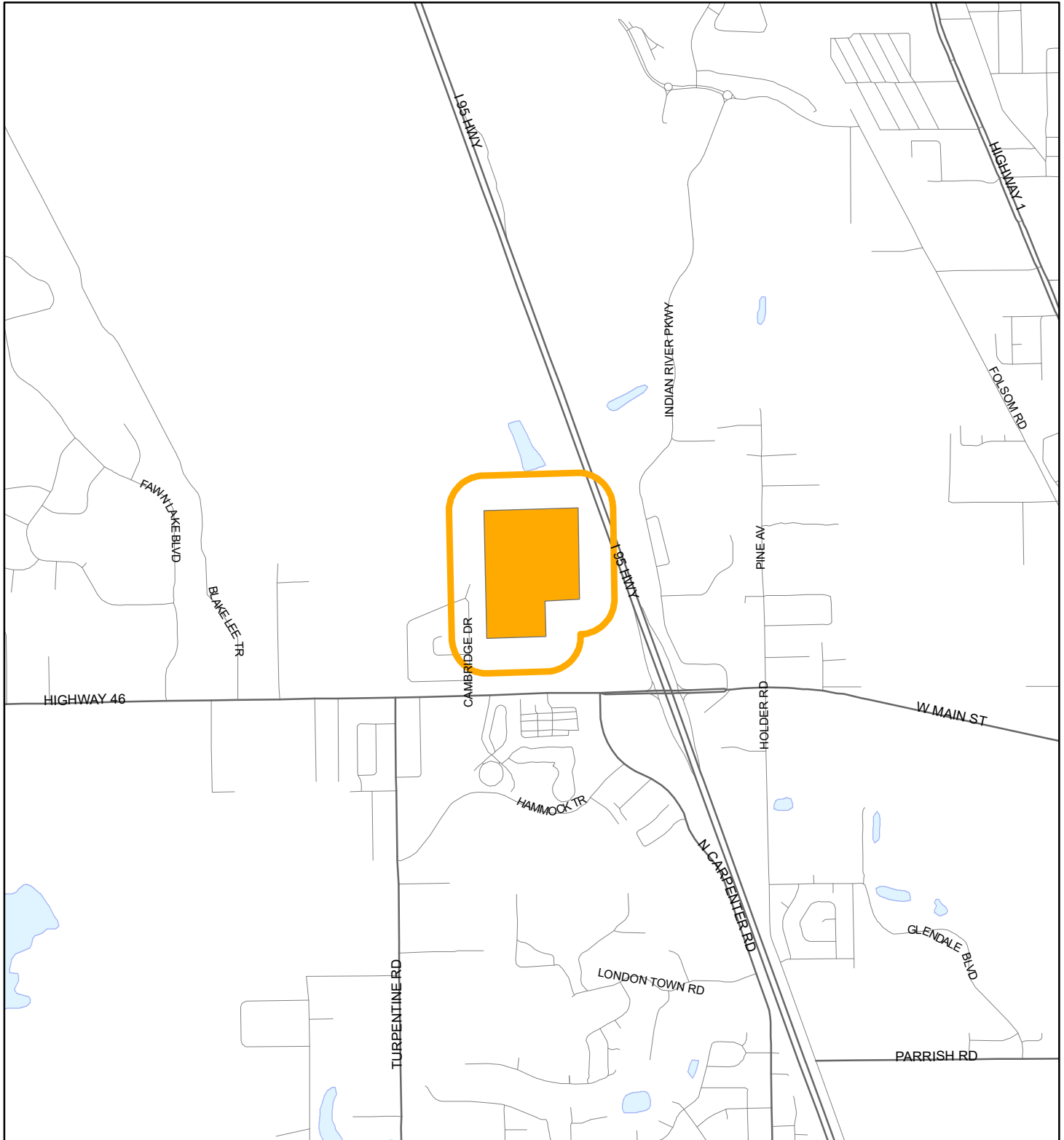


# LOCATION MAP

JACKSON FAMILY TRUST; AND C.B. DAVIS FAMILY TRUST  
21PZ00089 SMALL SCALE AMENDMENT 21S.10





1:24,000 or 1 inch = 2,000 feet

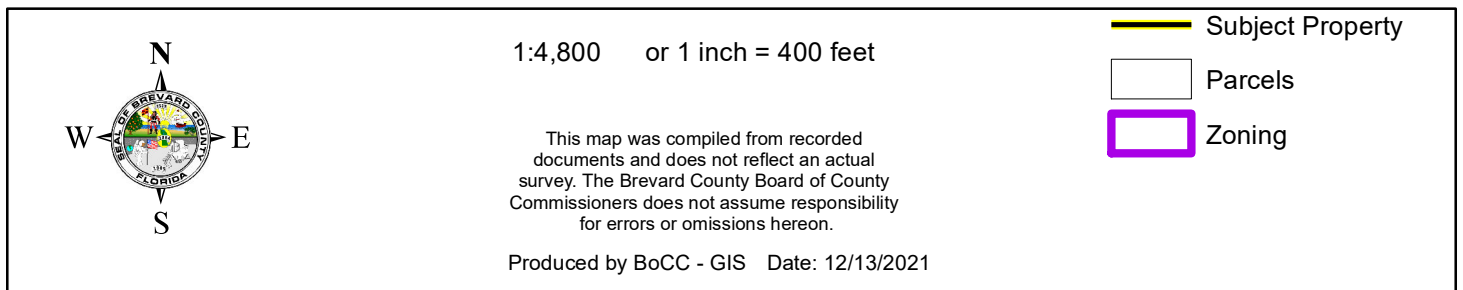
Buffer Distance: 500 feet

This map was compiled from recorded documents and does not reflect an actual survey. The Brevard County Board of County Commissioners does not assume responsibility for errors or omissions hereon.

Produced by BoCC - GIS Date: 12/13/2021

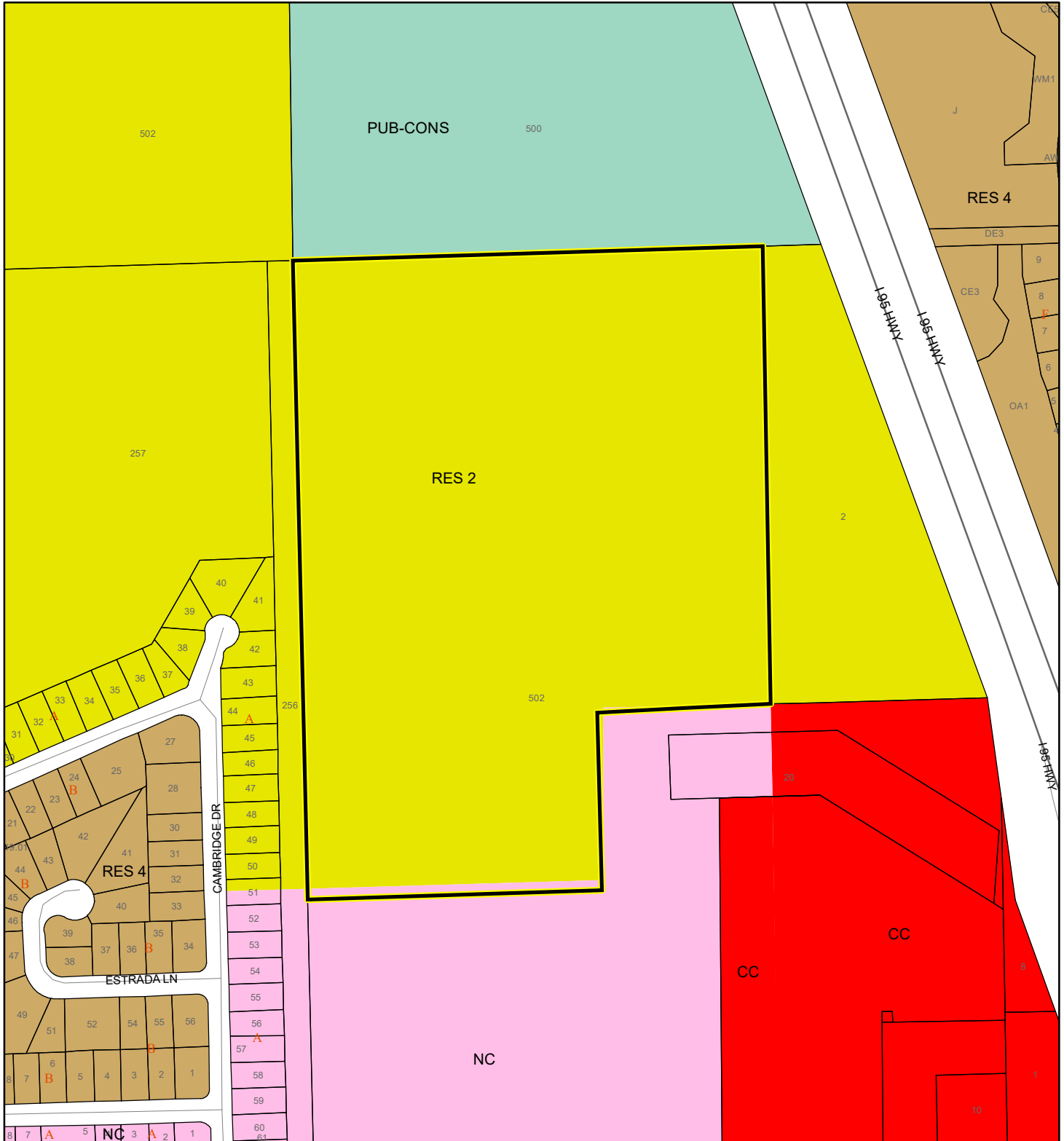
 Buffer  
 Subject Property

JACKSON FAMILY TRUST; AND C.B. DAVIS FAMILY TRUST  
21PZ00089 SMALL SCALE AMENDMENT 21S.10





# FUTURE LAND USE MAP

JACKSON FAMILY TRUST; AND C.B. DAVIS FAMILY TRUST  
21PZ00089 SMALL SCALE AMENDMENT 21S.10



1:4,800 or 1 inch = 400 feet

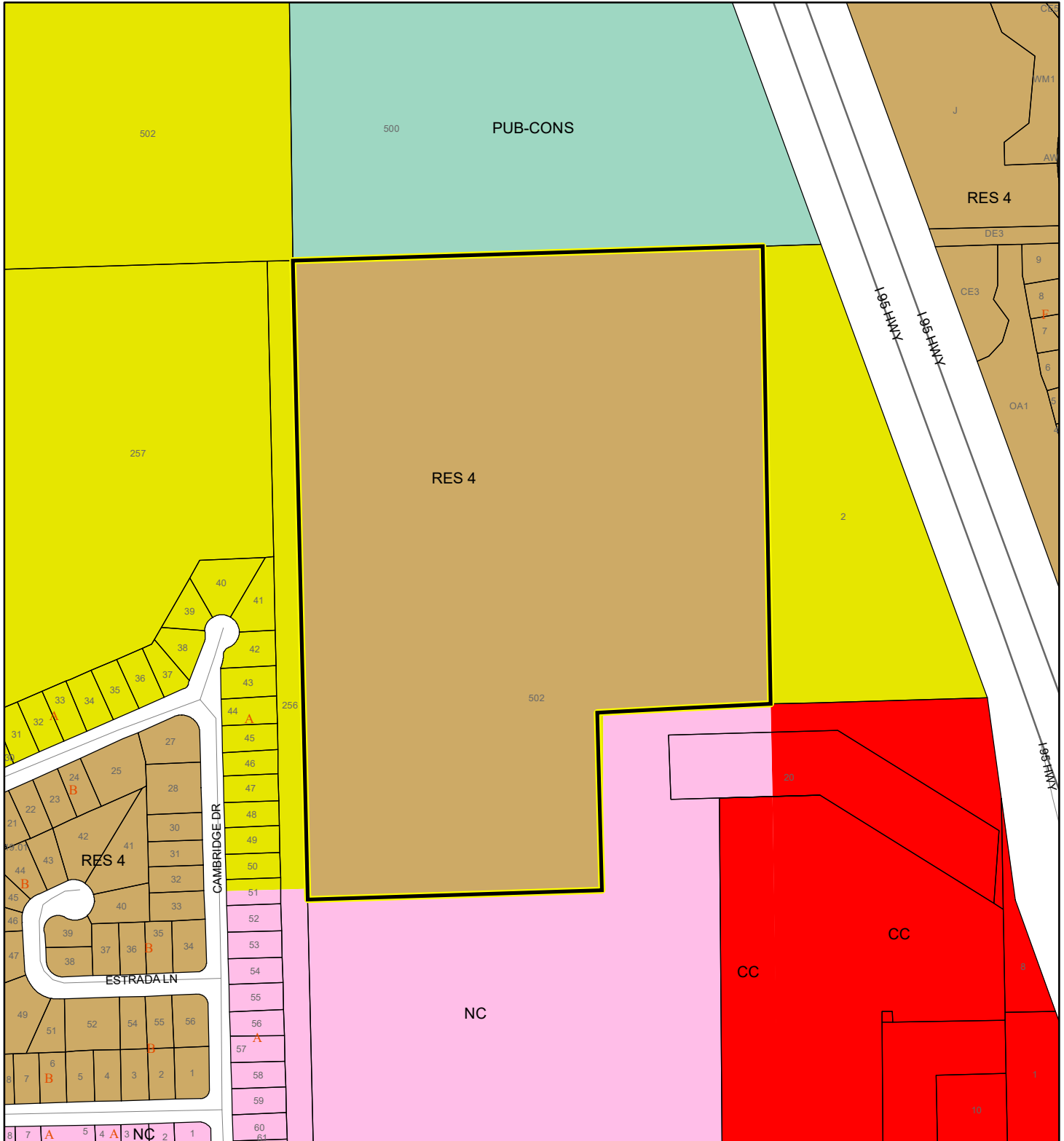
 Subject Property  
 Parcels

This map was compiled from recorded documents and does not reflect an actual survey. The Brevard County Board of County Commissioners does not assume responsibility for errors or omissions hereon.



Produced by BoCC - GIS Date: 12/13/2021

# PROPOSED FUTURE LAND USE MAP

JACKSON FAMILY TRUST; AND C.B. DAVIS FAMILY TRUST  
21PZ00089 SMALL SCALE AMENDMENT 21S.10



1:4,800 or 1 inch = 400 feet

 Subject Property  
 Parcels

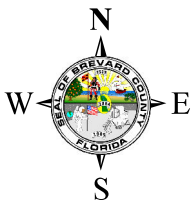
This map was compiled from recorded documents and does not reflect an actual survey. The Brevard County Board of County Commissioners does not assume responsibility for errors or omissions hereon.

Produced by BoCC - GIS Date: 12/13/2021



# AERIAL MAP

JACKSON FAMILY TRUST; AND C.B. DAVIS FAMILY TRUST  
21PZ00089 SMALL SCALE AMENDMENT 21S.10




1:4,800 or 1 inch = 400 feet

PHOTO YEAR: 2021

This map was compiled from recorded documents and does not reflect an actual survey. The Brevard County Board of County Commissioners does not assume responsibility for errors or omissions hereon.

Produced by BoCC - GIS Date: 12/13/2021

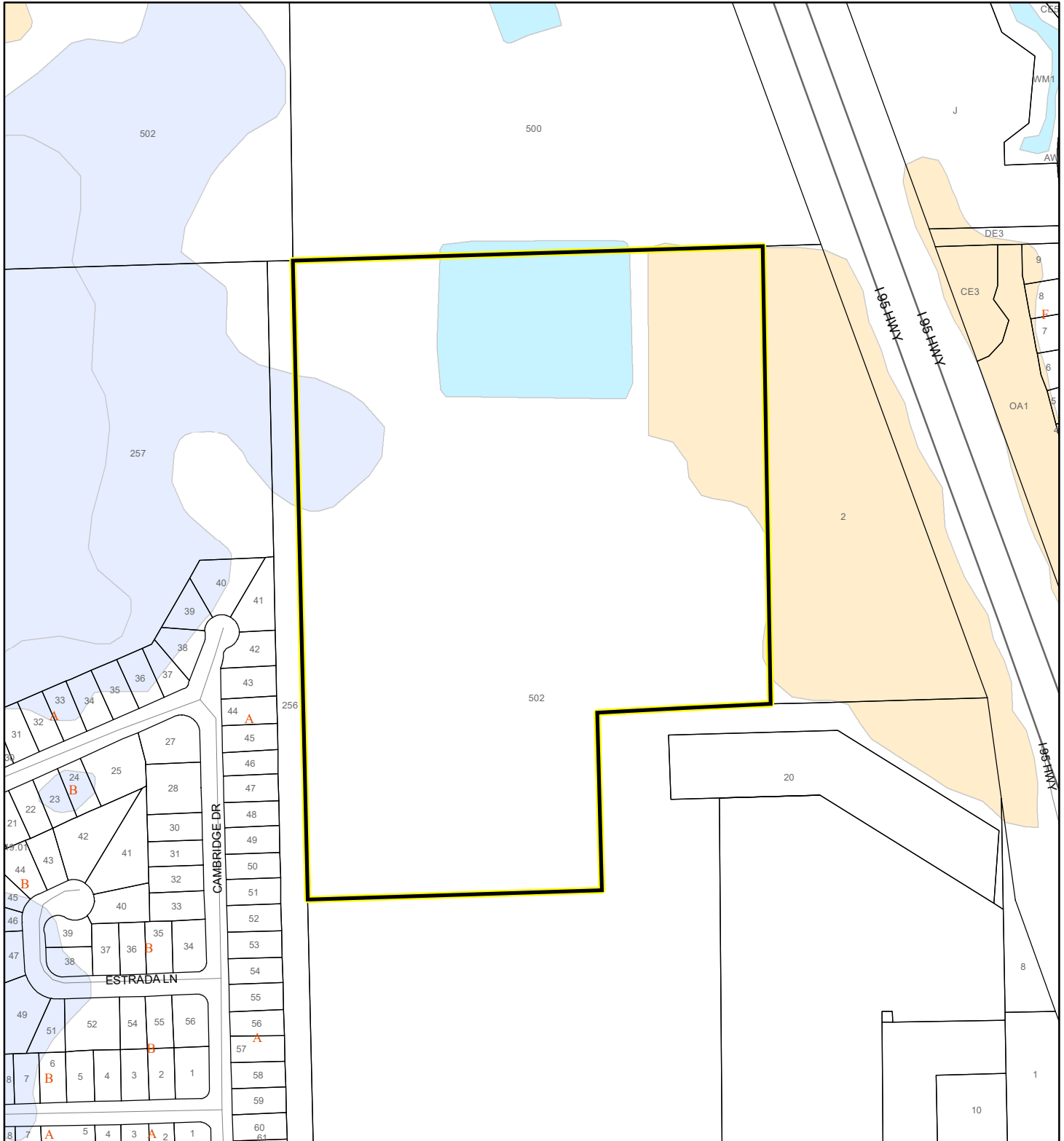
 Subject Property

 Parcels



# NWI WETLANDS MAP

JACKSON FAMILY TRUST; AND C.B. DAVIS FAMILY TRUST  
21PZ00089 SMALL SCALE AMENDMENT 21S.10



1:4,800 or 1 inch = 400 feet

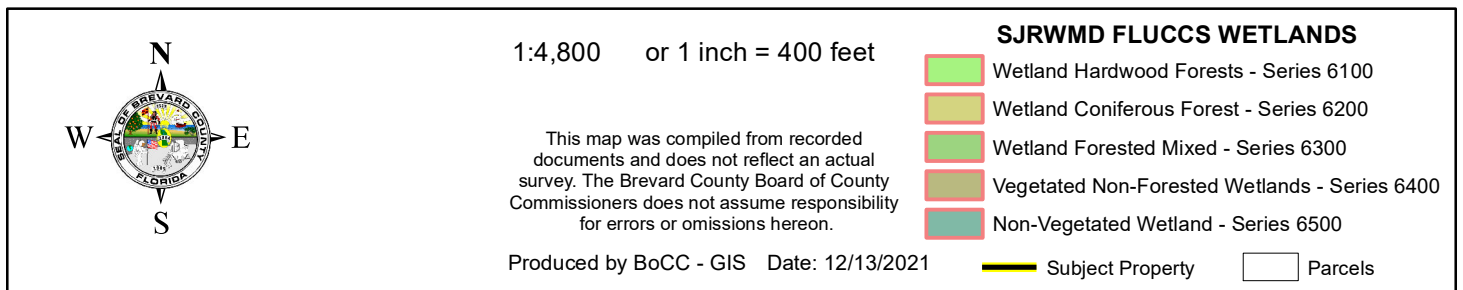
This map was compiled from recorded documents and does not reflect an actual survey. The Brevard County Board of County Commissioners does not assume responsibility for errors or omissions hereon.

Produced by BoCC - GIS Date: 12/13/2021

## National Wetlands Inventory (NWI)

Estuarine and Marine Deepwater	Freshwater Pond
Estuarine and Marine Wetland	Lake
Freshwater Emergent Wetland	Other
Freshwater Forested/Shrub Wetland	Riverine
Subject Property	Parcels

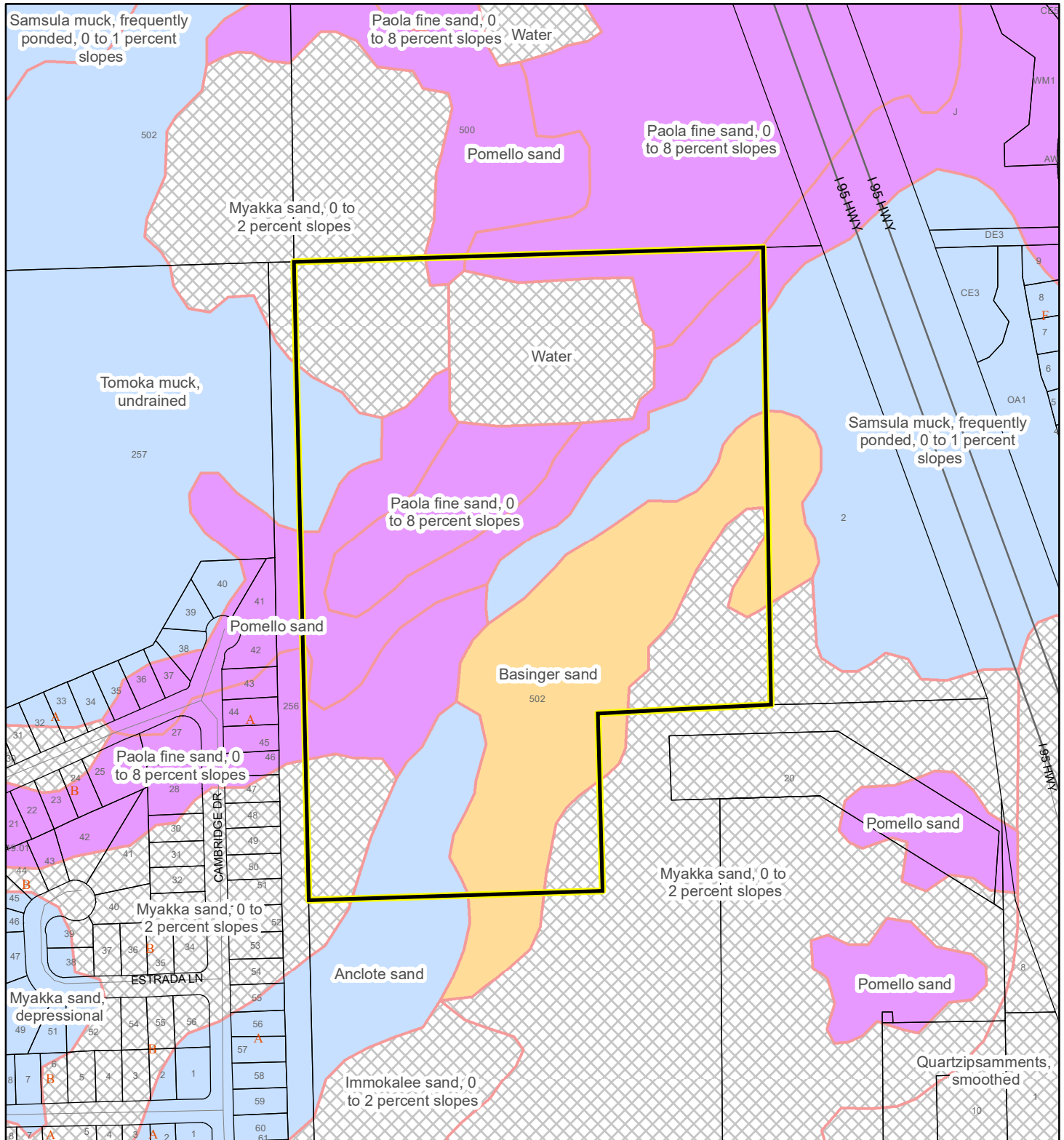
JACKSON FAMILY TRUST; AND C.B. DAVIS FAMILY TRUST  
21PZ00089 SMALL SCALE AMENDMENT 21S.10



# USDA SCSSS SOILS MAP

JACKSON FAMILY TRUST; AND C.B. DAVIS FAMILY TRUST

21PZ00089 SMALL SCALE AMENDMENT 21S.10



1:4,800 or 1 inch = 400 feet

This map was compiled from recorded documents and does not reflect an actual survey. The Brevard County Board of County Commissioners does not assume responsibility for errors or omissions hereon.

Produced by BoCC - GIS Date: 12/13/2021

## USDA SCSSS Soils

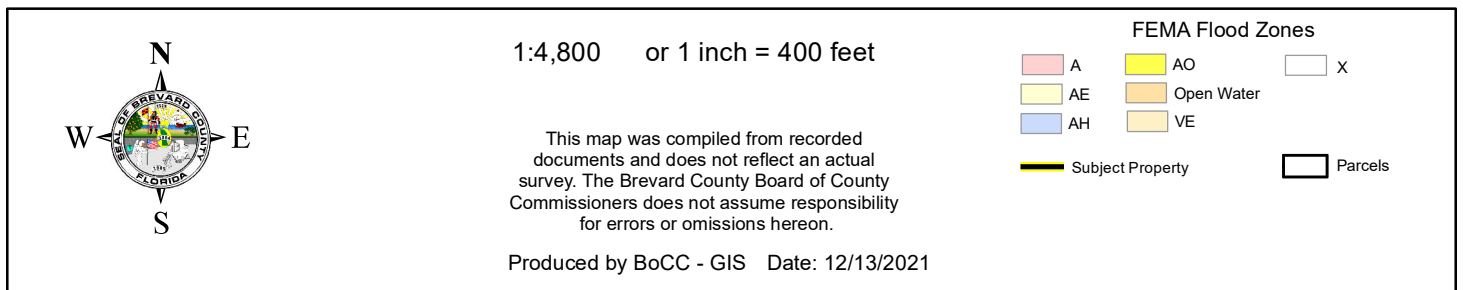
- Aquifer and Hydric
- Aquifer
- Hydric
- None

Subject Property

Parcels

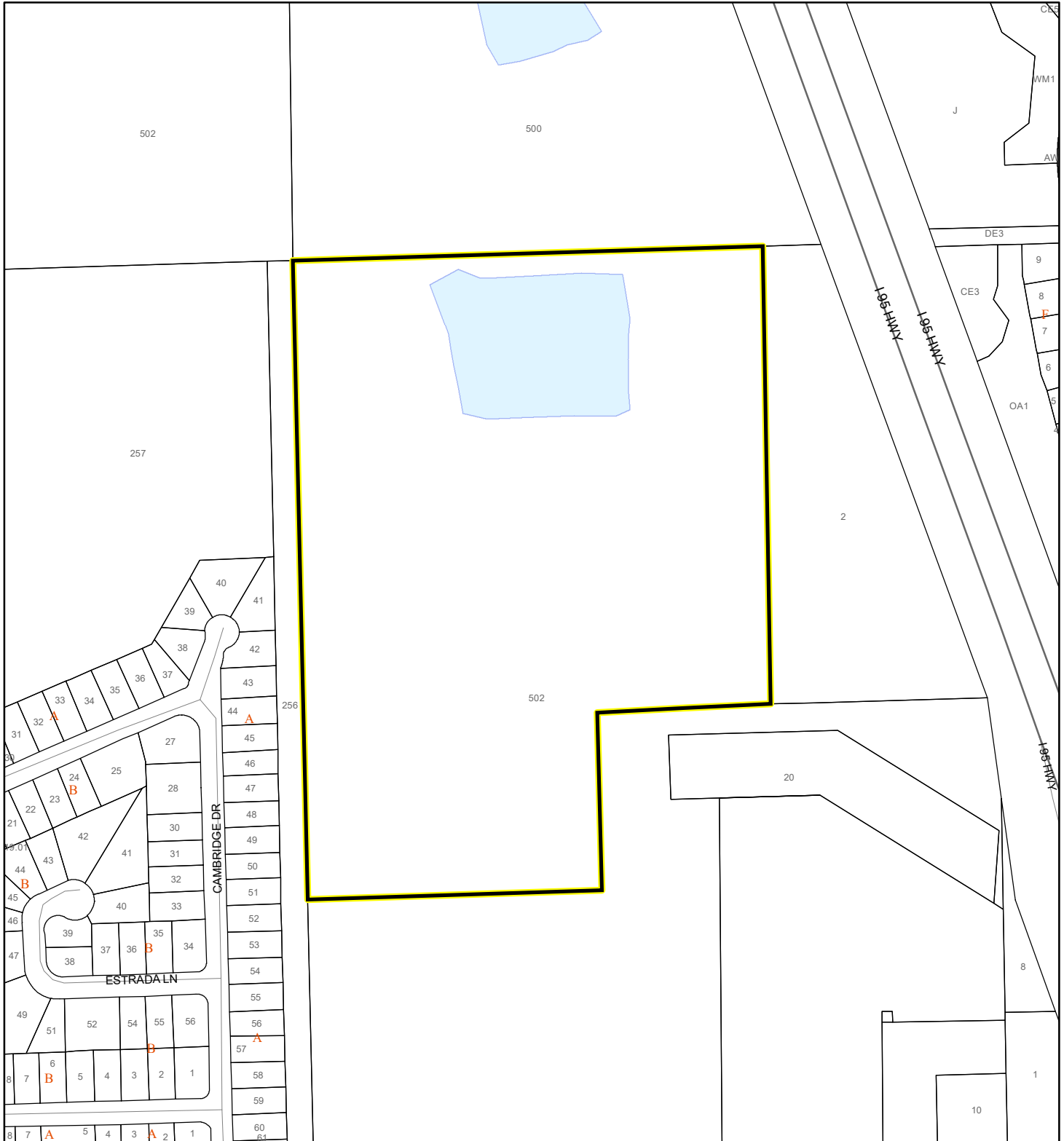


JACKSON FAMILY TRUST; AND C.B. DAVIS FAMILY TRUST  
21PZ00089 SMALL SCALE AMENDMENT 21S.10



# COASTAL HIGH HAZARD AREA MAP

JACKSON FAMILY TRUST; AND C.B. DAVIS FAMILY TRUST  
21PZ00089 SMALL SCALE AMENDMENT 21S.10



1:4,800 or 1 inch = 400 feet


This map was compiled from recorded documents and does not reflect an actual survey. The Brevard County Board of County Commissioners does not assume responsibility for errors or omissions hereon.

Produced by BoCC - GIS Date: 12/13/2021

 Subject Property

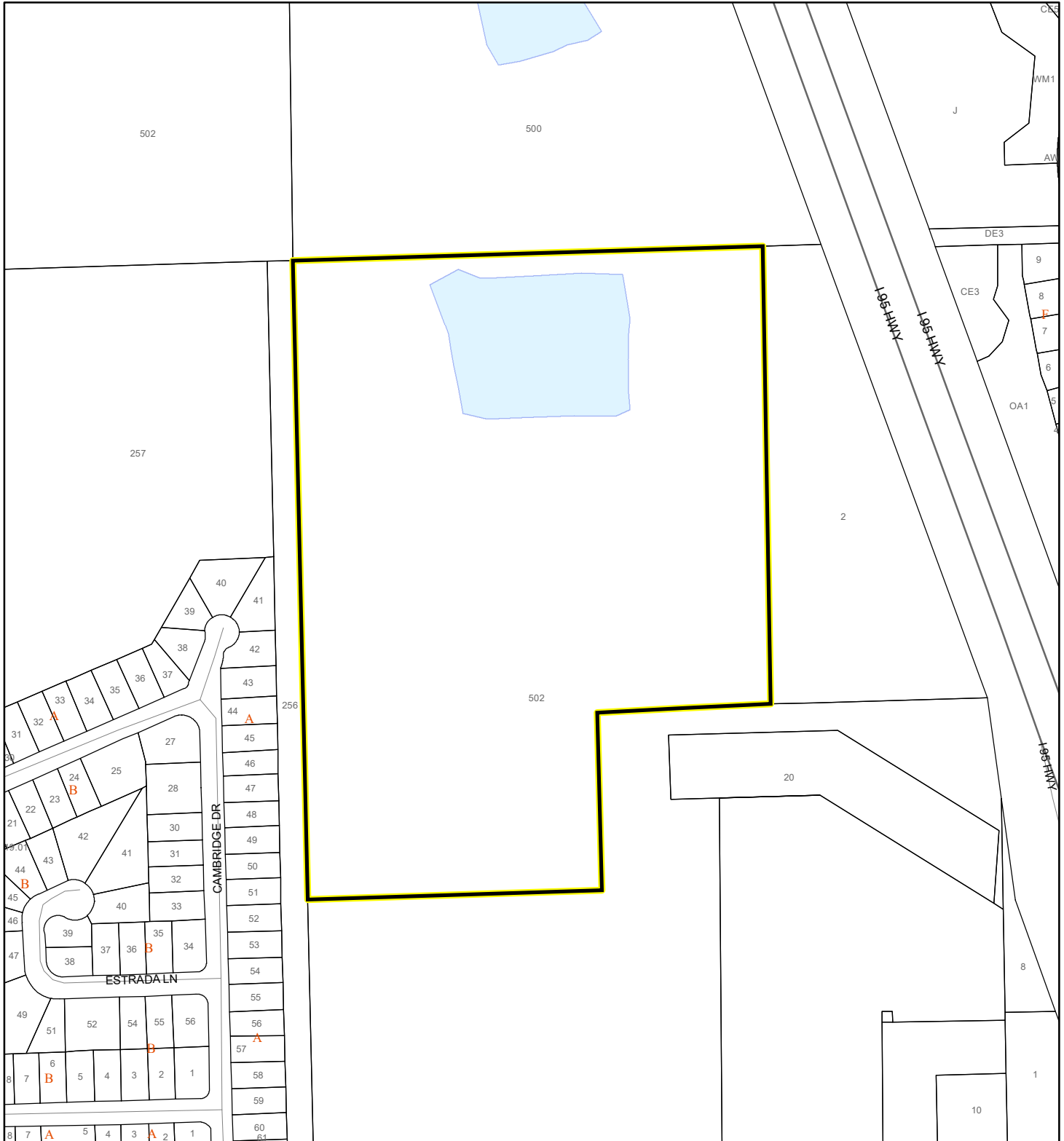
 Parcels

**Coastal High Hazard Area**

 SurgeZoneCat1

# INDIAN RIVER LAGOON SEPTIC OVERLAY MAP

JACKSON FAMILY TRUST; AND C.B. DAVIS FAMILY TRUST  
21PZ00089 SMALL SCALE AMENDMENT 21S.10



1:4,800 or 1 inch = 400 feet

This map was compiled from recorded documents and does not reflect an actual survey. The Brevard County Board of County Commissioners does not assume responsibility for errors or omissions hereon.

Produced by BoCC - GIS Date: 12/13/2021

 Subject Property

 Parcels

## Septic Overlay

 40 Meters

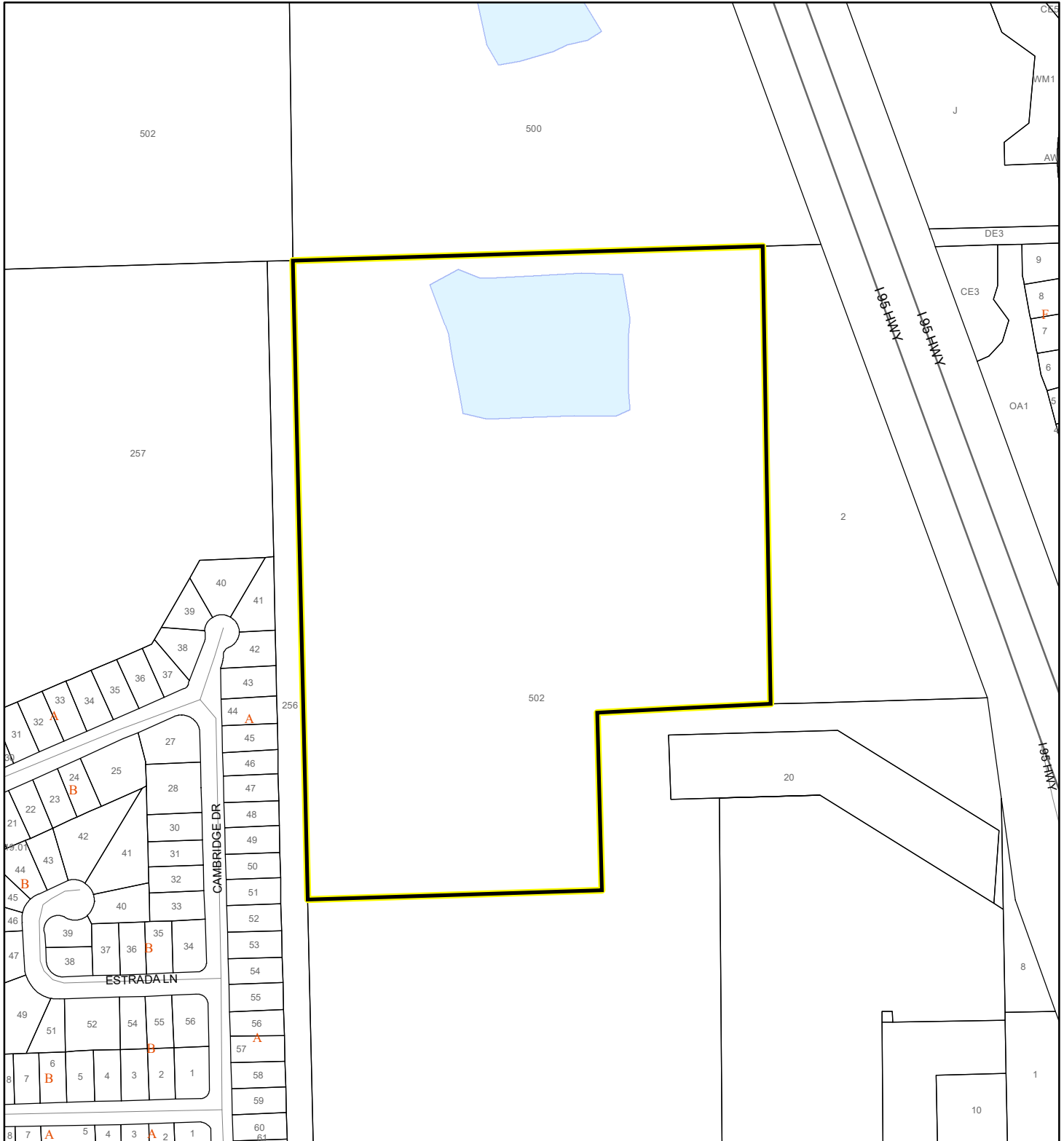
 60 Meters

 All Distances



# EAGLE NESTS MAP

JACKSON FAMILY TRUST; AND C.B. DAVIS FAMILY TRUST  
21PZ00089 SMALL SCALE AMENDMENT 21S.10




1:4,800 or 1 inch = 400 feet

This map was compiled from recorded documents and does not reflect an actual survey. The Brevard County Board of County Commissioners does not assume responsibility for errors or omissions hereon.

Produced by BoCC - GIS Date: 12/13/2021

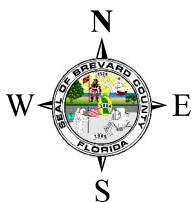
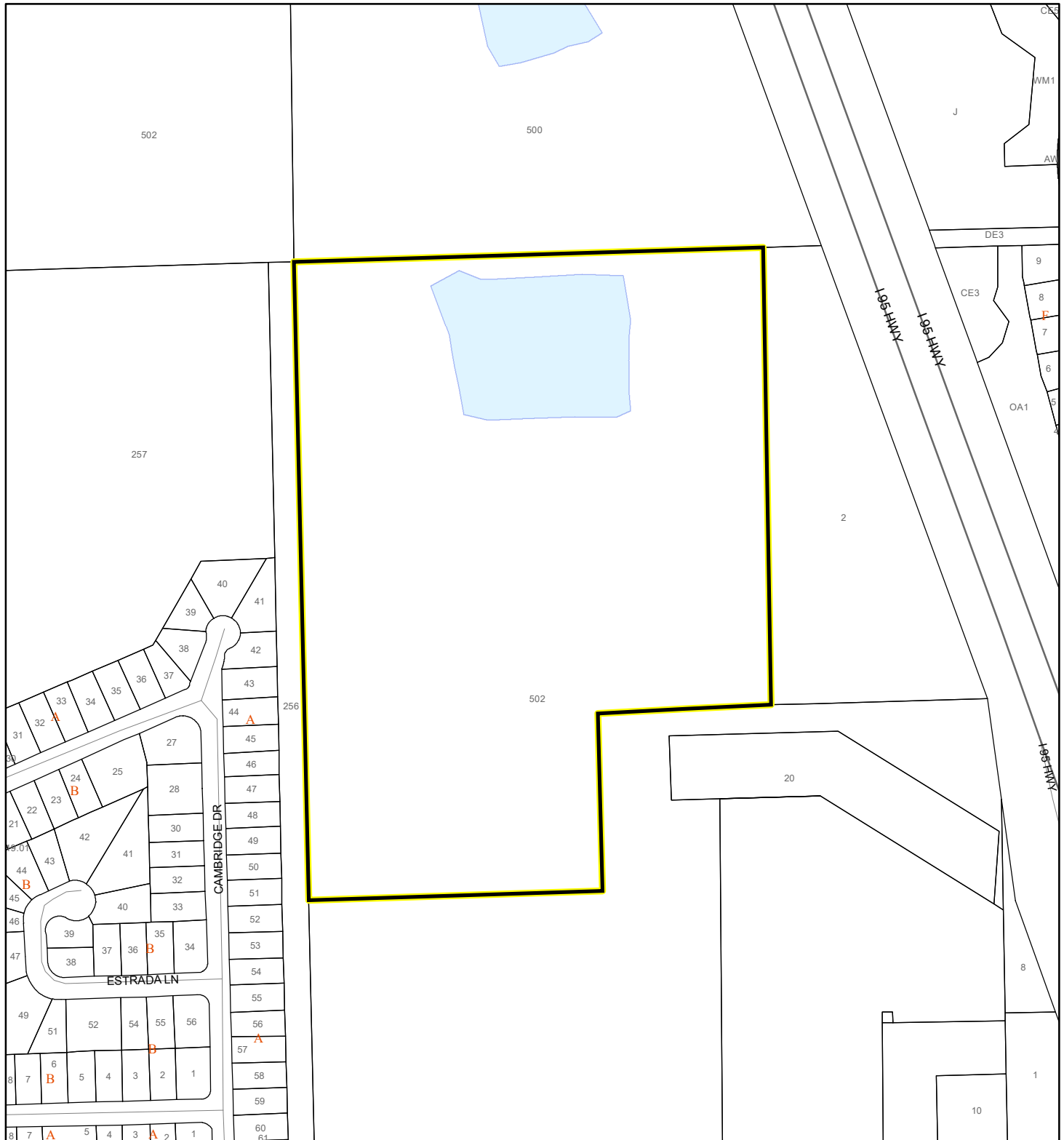
 Subject Property

 Parcels

 Eagle Nests  
FWS 2010

# SCRUB JAY OCCUPANCY MAP

JACKSON FAMILY TRUST; AND C.B. DAVIS FAMILY TRUST  
21PZ00089 SMALL SCALE AMENDMENT 21S.10



1:4,800 or 1 inch = 400 feet

This map was compiled from recorded documents and does not reflect an actual survey. The Brevard County Board of County Commissioners does not assume responsibility for errors or omissions hereon.

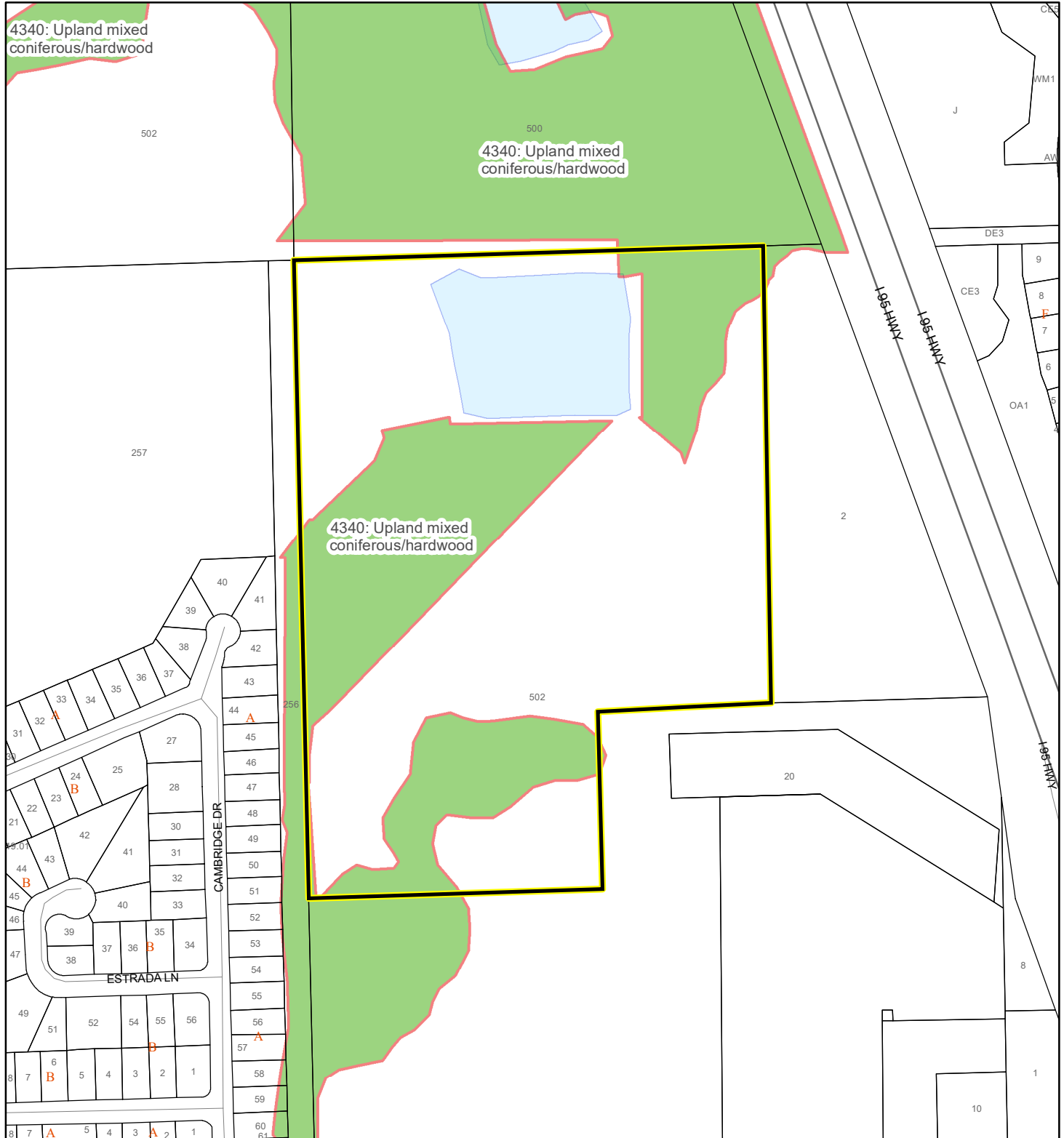
Produced by BoCC - GIS Date: 12/13/2021

- Subject Property
- Parcels
- Scrub Jay Occupancy

# SJRWMD FLUCCS UPLAND FORESTS - 4000 Series MAP

JACKSON FAMILY TRUST; AND C.B. DAVIS FAMILY TRUST

21PZ00089 SMALL SCALE AMENDMENT 21S.10



1:4,800 or 1 inch = 400 feet

This map was compiled from recorded documents and does not reflect an actual survey. The Brevard County Board of County Commissioners does not assume responsibility for errors or omissions hereon.

Produced by BoCC - GIS Date: 12/13/2021

## SJRWMD FLUCCS Upland Forests

- Upland Coniferous Forest - 4100 Series
- Upland Hardwood Forest - 4200 Series
- Upland Mixed Forest - 4300 Series
- Tree Plantations - 4400 Series

Subject Property

Parcels