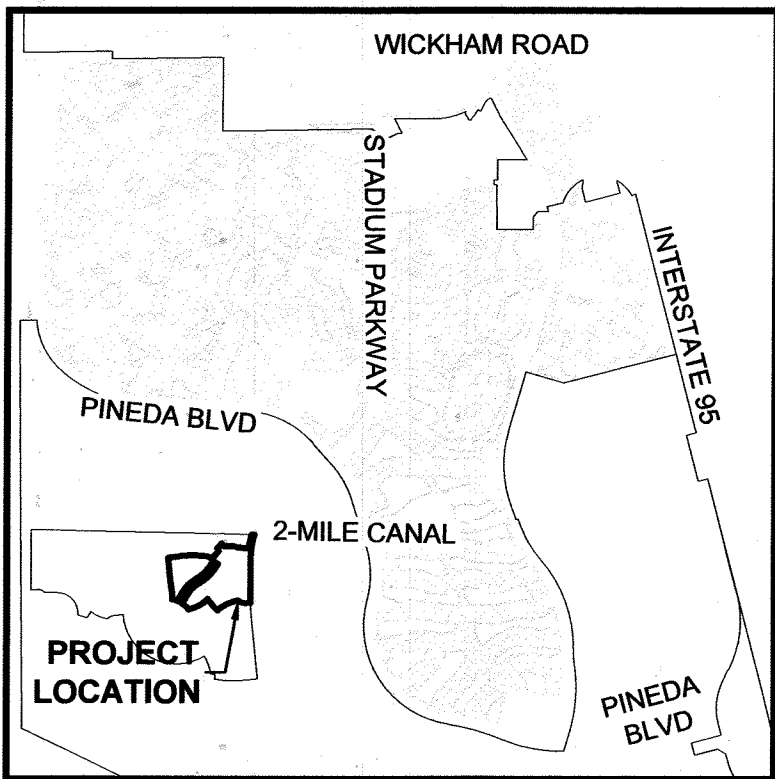


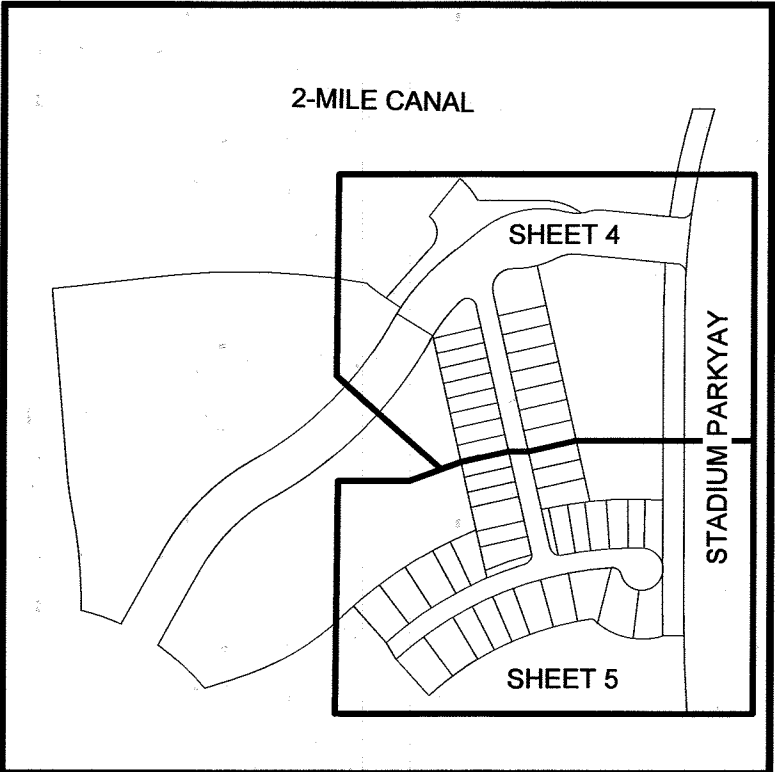
ATTEST: _____
Clerk of the Circuit Court in and for Brevard County, Fla.

DEL WEBB AT VIERA - PHASE 1
SECTIONS 20 AND 29, TOWNSHIP 26 SOUTH, RANGE 36 EAST
BREVARD COUNTY, FLORIDA

PLAT BOOK _____, PAGE _____
SHEET 2 OF 5
SECTIONS 20 AND 29, TOWNSHIP 26 SOUTH, RANGE 36 EAST



LOCATION MAP
NTS



KEY MAP
NTS

DESCRIPTION OF DEL WEBB AT VIERA - PHASE 1
A PARCEL OF LAND IN SECTIONS 20 AND 29, TOWNSHIP 26 SOUTH, RANGE 36 EAST, BREVARD COUNTY, FLORIDA, AND BEING MORE PARTICULARLY DESCRIBED AS FOLLOWS:

COMMENCE AT THE NORTH-WEST CORNER OF STADIUM PARKWAY EXTENSION-SEGMENT E, ACCORDING TO THE PLAT THEREOF AS RECORDED IN ROAD PLAT BOOK 5, PAGE 48, PUBLIC RECORDS OF BREVARD COUNTY, FLORIDA AND RUN SOUTHWEST ALONG THE WESTERLY LINE OF SAID STADIUM PARKWAY EXTENSION-SEGMENT E THE FOLLOWING SEVEN (7) COURSES AND DISTANCES, (1) THENCE S48°45'27"W, A DISTANCE OF 150.13 FEET TO A NON-TANGENT INTERSECTION WITH A CURVE TO THE RIGHT; (2) THENCE ALONG THE ARC OF SAID CURVE, (SAID CURVE BEING CURVED CONCAVE TO THE WEST AND HAVING A RADIUS OF 25.00 FEET, A CENTRAL ANGLE OF 91°46'18", A CHORD BEARING OF S02°16'36"W AND A CHORD LENGTH OF 35.90 FEET), A DISTANCE OF 40.04 FEET TO THE END OF SAID CURVE; (3) THENCE S48°09'45"W A DISTANCE OF 1155.37 FEET TO THE BEGINNING OF A CURVE TO THE LEFT; (4) THENCE ALONG THE ARC OF SAID CURVE, (SAID CURVE BEING CURVED CONCAVE TO THE SOUTHEAST AND HAVING A RADIUS OF 1775.00 FEET, A CENTRAL ANGLE OF 31°28'39", A CHORD BEARING OF S32°25'26"W AND A CHORD LENGTH OF 962.94 FEET), A DISTANCE OF 975.16 FEET TO THE POINT OF BEGINNING OF THE PARCEL OF LAND HEREIN DESCRIBED; (5) THENCE CONTINUING ALONG THE ARC OF SAID CURVE, (SAID CURVE BEING CURVED CONCAVE TO THE SOUTHEAST AND HAVING A RADIUS OF 1775.00 FEET, A CENTRAL ANGLE OF 16°41'07", A CHORD BEARING OF S08°20'33"W AND A CHORD LENGTH OF 515.08 FEET), A DISTANCE OF 516.90 FEET TO THE END OF SAID CURVE, (6) THENCE S00°00'00"E, A DISTANCE OF 804.47 FEET TO THE BEGINNING OF A CURVE TO THE LEFT; (7) THENCE ALONG THE ARC OF SAID CURVE, (SAID CURVE BEING CURVED CONCAVE TO THE EAST, AND HAVING A RADIUS OF 3575.00 FEET, A CENTRAL ANGLE OF 00°51'21", A CHORD BEARING OF S00°25'40"E, AND A CHORD LENGTH OF 53.39 FEET), A DISTANCE OF 53.39 FEET TO AN INTERSECTION WITH A NON-TANGENT LINE TO THE WEST; THENCE S89°08'39"W ALONG SAID NON-TANGENT LINE, A DISTANCE OF 55.00 FEET TO A NON-TANGENT INTERSECTION WITH A CURVE TO THE RIGHT; THENCE ALONG THE ARC OF SAID CURVE, (SAID CURVE BEING CURVED CONCAVE TO THE NORTHEAST, AND HAVING A RADIUS OF 182.00 FEET, A CENTRAL ANGLE OF 62°20'56", A CHORD BEARING OF N76°32'56"W, AND A CHORD LENGTH OF 188.42 FEET), A DISTANCE OF 198.05 FEET TO A NON-TANGENT INTERSECTION WITH A CURVE TO THE LEFT; THENCE ALONG THE ARC OF SAID CURVE, (SAID CURVE BEING CURVED CONCAVE TO THE SOUTHEAST, AND HAVING A RADIUS OF 795.00 FEET, A CENTRAL ANGLE OF 34°15'19", A CHORD BEARING OF S64°53'32"W, AND A CHORD LENGTH OF 468.26 FEET), A DISTANCE OF 475.31 FEET TO AN INTERSECTION WITH A NON-TANGENT LINE TO THE NORTHWEST; THENCE N42°14'08"W ALONG SAID NON-TANGENT LINE, A DISTANCE OF 127.00 FEET; THENCE N30°47'32"W, A DISTANCE OF 50.99 FEET; THENCE N41°38'22"W, A DISTANCE OF 127.00 FEET TO A NON-TANGENT INTERSECTION WITH A CURVE TO THE LEFT; THENCE ALONG THE ARC OF SAID CURVE, (SAID CURVE BEING CURVED CONCAVE TO THE SOUTHEAST, AND HAVING A RADIUS OF 1099.00 FEET, A CENTRAL ANGLE OF 02°01'49", A CHORD BEARING OF S47°20'43"W, AND A CHORD LENGTH OF 38.94 FEET), A DISTANCE OF 38.94 FEET TO A POINT OF REVERSE CURVATURE; THENCE ALONG THE ARC OF SAID CURVE, (SAID CURVE BEING CURVED CONCAVE TO THE NORTHWEST, AND HAVING A RADIUS OF 701.00 FEET, A CENTRAL ANGLE OF 26°45'07", A CHORD BEARING OF S59°42'22"W, AND A CHORD LENGTH OF 324.34 FEET), A DISTANCE OF 327.30 FEET TO THE END OF SAID CURVE; THENCE S73°04'56"W, A DISTANCE OF 81.91 FEET TO A NON-TANGENT INTERSECTION WITH A CURVE TO THE LEFT; THENCE ALONG THE ARC OF SAID CURVE, (SAID CURVE BEING CURVED CONCAVE TO THE SOUTHWEST, AND HAVING A RADIUS OF 597.50 FEET, A CENTRAL ANGLE OF 15°52'15", A CHORD BEARING OF N47°28'37"W, AND A CHORD LENGTH OF 164.98 FEET), A DISTANCE OF 165.51 FEET TO A NON-TANGENT INTERSECTION WITH A CURVE TO THE RIGHT; THENCE ALONG THE ARC OF SAID CURVE, (SAID CURVE BEING CURVED CONCAVE TO THE SOUTHEAST, AND HAVING A RADIUS OF 25.00 FEET, A CENTRAL ANGLE OF 05°04'26", A CHORD BEARING OF N26°45'35"E, AND A CHORD LENGTH OF 2.21 FEET), A DISTANCE OF 2.21 FEET TO THE END OF SAID CURVE; THENCE N29°17'48"E, A DISTANCE OF 227.36 FEET TO THE BEGINNING OF A CURVE TO THE RIGHT; THENCE ALONG THE ARC OF SAID CURVE, (SAID CURVE BEING CURVED CONCAVE TO THE SOUTHEAST, AND HAVING A RADIUS OF 475.00 FEET, A CENTRAL ANGLE OF 31°38'35", A CHORD BEARING OF N45°08'05"E, AND A CHORD LENGTH OF 258.74 FEET), A DISTANCE OF 262.05 FEET TO A POINT OF REVERSE CURVATURE; THENCE ALONG THE ARC OF SAID CURVE, (SAID CURVE BEING CURVED CONCAVE TO THE NORTHWEST, AND HAVING A RADIUS OF 1055.00 FEET, A CENTRAL ANGLE OF 31°38'23", A CHORD BEARING OF N45°05'11"E, AND A CHORD LENGTH OF 575.21 FEET), A DISTANCE OF 582.59 FEET TO A POINT OF REVERSE CURVATURE; THENCE ALONG THE ARC OF SAID CURVE, (SAID CURVE BEING CURVED CONCAVE TO THE SOUTHEAST, AND HAVING A RADIUS OF 445.00 FEET, A CENTRAL ANGLE OF 02°11'45", A CHORD BEARING OF N30°21'52"E, AND A CHORD LENGTH OF 17.05 FEET), A DISTANCE OF 17.05 FEET TO AN INTERSECTION WITH A NON-TANGENT LINE TO THE NORTHWEST; THENCE N58°32'15"W ALONG SAID NON-TANGENT LINE, A DISTANCE OF 110.00 FEET TO A NON-TANGENT INTERSECTION WITH A CURVE TO THE LEFT; THENCE ALONG THE ARC OF SAID CURVE, (SAID CURVE BEING CURVED CONCAVE TO THE SOUTHEAST, AND HAVING A RADIUS OF 555.00 FEET, A CENTRAL ANGLE OF 02°11'45", A CHORD BEARING OF S30°21'52"W, AND A CHORD LENGTH OF 21.27 FEET), A DISTANCE OF 21.27 FEET TO A POINT OF REVERSE CURVATURE; THENCE ALONG THE ARC OF SAID CURVE, (SAID CURVE BEING CURVED CONCAVE TO THE NORTHWEST, AND HAVING A RADIUS OF 945.00 FEET, A CENTRAL ANGLE OF 31°38'23", A CHORD BEARING OF S45°05'11"W, AND A CHORD LENGTH OF 515.24 FEET), A DISTANCE OF 521.84 FEET TO A POINT OF REVERSE CURVATURE; THENCE ALONG THE ARC OF SAID CURVE, (SAID CURVE BEING CURVED CONCAVE TO THE SOUTHEAST, AND HAVING A RADIUS OF 585.00 FEET, A CENTRAL ANGLE OF 31°36'35", A CHORD BEARING OF S45°06'05"W, AND A CHORD LENGTH OF 318.66 FEET), A DISTANCE OF 322.74 FEET TO THE END OF SAID CURVE; THENCE S29°17'48"W, A DISTANCE OF 227.36 FEET TO THE BEGINNING OF A CURVE TO THE RIGHT; THENCE ALONG THE ARC OF SAID CURVE, (SAID CURVE BEING CURVED CONCAVE TO THE NORTHWEST, AND HAVING A RADIUS OF 25.00 FEET, A CENTRAL ANGLE OF 5°04'26", A CHORD BEARING OF S31°50'01"W, AND A CHORD LENGTH OF 2.21 FEET), A DISTANCE OF 2.21 FEET TO A NON-TANGENT INTERSECTION WITH A CURVE TO THE LEFT; THENCE ALONG THE ARC OF SAID CURVE, (SAID CURVE BEING CURVED CONCAVE TO THE SOUTHWEST, AND HAVING A RADIUS OF 597.50 FEET, A CENTRAL ANGLE OF 10°24'39", A CHORD BEARING OF N71°11'59"W, AND A CHORD LENGTH OF 108.42 FEET), A DISTANCE OF 108.57 FEET TO AN INTERSECTION WITH A NON-TANGENT LINE TO THE NORTHWEST; THENCE N01°08'34"W ALONG SAID NON-TANGENT LINE, A DISTANCE OF 49.66 FEET TO THE BEGINNING OF A CURVE TO THE LEFT; THENCE ALONG THE ARC OF SAID CURVE, (SAID CURVE BEING CURVED CONCAVE TO THE WEST, AND HAVING A RADIUS OF 1152.00 FEET, A CENTRAL ANGLE OF 10°29'23", A CHORD BEARING OF N06°23'16"W, AND A CHORD LENGTH OF 210.61 FEET), A DISTANCE OF 210.91 FEET TO A POINT OF REVERSE CURVATURE; THENCE ALONG THE ARC OF SAID CURVE, (SAID CURVE BEING CURVED CONCAVE TO THE EAST, AND HAVING A RADIUS OF 848.00 FEET, A CENTRAL ANGLE OF 06°50'38", A CHORD BEARING OF N08°12'38"W, AND A CHORD LENGTH OF 101.23 FEET), A DISTANCE OF 101.29 FEET TO THE END OF SAID CURVE; THENCE N04°47'19"W, A DISTANCE OF 477.99 FEET TO A NON-TANGENT INTERSECTION WITH A CURVE TO THE LEFT; THENCE ALONG THE ARC OF SAID CURVE, (SAID CURVE BEING CURVED CONCAVE TO THE NORTH, AND HAVING A RADIUS OF 8709.00 FEET, A CENTRAL ANGLE OF 01°36'52", A CHORD BEARING OF N83°28'04"E, AND A CHORD LENGTH OF 245.39 FEET), A DISTANCE OF 245.40 FEET TO A POINT OF REVERSE CURVATURE; THENCE ALONG THE ARC OF SAID CURVE, (SAID CURVE BEING CURVED CONCAVE TO THE SOUTH, AND HAVING A RADIUS OF 1918.00 FEET, A CENTRAL ANGLE OF 17°08'23", A CHORD BEARING OF S88°46'11"E, AND A CHORD LENGTH OF 571.62 FEET), A DISTANCE OF 573.76 FEET TO A NON-TANGENT INTERSECTION WITH A CURVE TO THE LEFT; THENCE ALONG THE ARC OF SAID CURVE, (SAID CURVE BEING CURVED CONCAVE TO THE NORTHEAST, AND HAVING A RADIUS OF 182.00 FEET, A CENTRAL ANGLE OF 11°16'23", A CHORD BEARING OF S51°00'10"E, AND A CHORD LENGTH OF 35.75 FEET), A DISTANCE OF 35.81 FEET TO THE END OF SAID CURVE; THENCE S56°38'21"E, A DISTANCE OF 29.21 FEET; THENCE N41°38'15"E, A DISTANCE OF 175.93 FEET TO THE BEGINNING OF A CURVE TO THE LEFT; THENCE ALONG THE ARC OF SAID CURVE, (SAID CURVE BEING CURVED CONCAVE TO THE WEST, AND HAVING A RADIUS OF 55.00 FEET, A CENTRAL ANGLE OF 92°27'47", A CHORD BEARING OF N04°37'38"W, AND A CHORD LENGTH OF 79.44 FEET), A DISTANCE OF 88.76 FEET TO AN INTERSECTION WITH A NON-TANGENT LINE TO THE NORTHEAST; THENCE N39°08'28"E ALONG SAID NON-TANGENT LINE, A DISTANCE OF 127.00 FEET TO A NON-TANGENT INTERSECTION WITH A CURVE TO THE RIGHT; THENCE ALONG THE ARC OF SAID CURVE, (SAID CURVE BEING CURVED CONCAVE TO THE SOUTHWEST, AND HAVING A RADIUS OF 182.00 FEET, A CENTRAL ANGLE OF 23°04'37", A CHORD BEARING OF S39°19'13"E, AND A CHORD LENGTH OF 72.81 FEET), A DISTANCE OF 73.30 FEET TO AN INTERSECTION WITH A NON-TANGENT LINE TO THE SOUTHEAST; THENCE S89°26'07"E ALONG SAID NON-TANGENT LINE, A DISTANCE OF 171.50 FEET TO THE BEGINNING OF A CURVE TO THE RIGHT; THENCE ALONG THE ARC OF SAID CURVE, (SAID CURVE BEING CURVED CONCAVE TO THE SOUTHWEST, AND HAVING A RADIUS OF 170.00 FEET, A CENTRAL ANGLE OF 35°18'21", A CHORD BEARING OF S71°46'57"E, AND A CHORD LENGTH OF 103.10 FEET), A DISTANCE OF 104.75 FEET TO A NON-TANGENT INTERSECTION WITH A CURVE TO THE LEFT; THENCE ALONG THE ARC OF SAID CURVE, (SAID CURVE BEING CURVED CONCAVE TO THE NORTHWEST, AND HAVING A RADIUS OF 100.00 FEET, A CENTRAL ANGLE OF 10°00'01", A CHORD BEARING OF N77°41'30"E, AND A CHORD LENGTH OF 17.43 FEET), A DISTANCE OF 17.45 FEET TO A POINT OF REVERSE CURVATURE; THENCE ALONG THE ARC OF SAID CURVE, (SAID CURVE BEING CURVED CONCAVE TO THE SOUTH, AND HAVING A RADIUS OF 100.00 FEET, A CENTRAL ANGLE OF 22°36'58", A CHORD BEARING OF N83°59'58"E, AND A CHORD LENGTH OF 39.22 FEET), A DISTANCE OF 39.47 FEET TO THE END OF SAID CURVE; THENCE S84°41'33"E, A DISTANCE OF 174.35 FEET TO A NON-TANGENT INTERSECTION WITH A CURVE TO THE RIGHT; THENCE ALONG THE ARC OF SAID CURVE, (SAID CURVE BEING CURVED CONCAVE TO THE SOUTHEAST, AND HAVING A RADIUS OF 1830.00 FEET, A CENTRAL ANGLE OF 09°01'28", A CHORD BEARING OF N11°41'55"E, AND A CHORD LENGTH OF 287.93 FEET), A DISTANCE OF 288.23 FEET TO AN INTERSECTION WITH A NON-TANGENT LINE TO THE SOUTHEAST; THENCE S88°44'11"E, A DISTANCE OF 56.99 FEET TO THE POINT OF BEGINNING, CONTAINING 35.66 ACRES, MORE OR LESS.

TRACT AREA SUMMARY TABLE			
TRACT	AREA (ACRES)	TRACT USE	OWNERSHIP AND MAINTENANCE ENTITY
TRACT A1	0.31	LANDSCAPING, IRRIGATION, SIGNAGE AND RELATED IMPROVEMENTS	DWV NEIGHBORHOOD ASSOCIATION, INC
TRACT B	3.77	VSD DRAINAGE SYSTEM, LANDSCAPING, IRRIGATION AND RELATED IMPROVEMENTS	DWV NEIGHBORHOOD ASSOCIATION, INC
TRACT B1	0.05	LANDSCAPING, IRRIGATION, SIGNAGE AND RELATED IMPROVEMENTS	DWV NEIGHBORHOOD ASSOCIATION, INC
TRACT C	10.58	VSD DRAINAGE SYSTEM, LANDSCAPING, IRRIGATION AND RELATED IMPROVEMENTS	DWV NEIGHBORHOOD ASSOCIATION, INC
TRACT D	7.13	VSD DRAINAGE SYSTEM, LANDSCAPING, IRRIGATION AND RELATED IMPROVEMENTS	DWV NEIGHBORHOOD ASSOCIATION, INC
TRACT H1	0.16	LANDSCAPING, IRRIGATION, SIGNAGE AND RELATED IMPROVEMENTS	DWV NEIGHBORHOOD ASSOCIATION, INC
TRACT H2	0.06	LANDSCAPING, IRRIGATION, SIGNAGE AND RELATED IMPROVEMENTS	DWV NEIGHBORHOOD ASSOCIATION, INC
TRACT I3	0.74	LANDSCAPING, IRRIGATION, SIGNAGE AND RELATED IMPROVEMENTS	DWV NEIGHBORHOOD ASSOCIATION, INC
TRACT R	0.37	LANDSCAPING, IRRIGATION AND RELATED IMPROVEMENTS	DWV NEIGHBORHOOD ASSOCIATION, INC
TRACT S	1.22	LANDSCAPING, IRRIGATION AND RELATED IMPROVEMENTS	DWV NEIGHBORHOOD ASSOCIATION, INC
TRACT ZZ	4.06	INGRESS/EGRESS, SIGNAGE, PUBLIC & PRIVATE UTILITIES, STORMWATER DRAINAGE AND RELATED IMPROVEMENTS	DWV NEIGHBORHOOD ASSOCIATION, INC

SURVEY SYMBOL LEGEND

- SECTION CORNER; MARKED AS NOTED
- PERMANENT REFERENCE MONUMENT (PRM); SET 4X4 INCH CONCRETE MONUMENT WITH DISK STAMPED PRM LB4905, UNLESS OTHERWISE NOTED
- PERMANENT CONTROL POINT (PCP); SET MAG NAIL AND DISK STAMPED PCP LB4905, UNLESS OTHERWISE NOTED
- SET 5/8" IRON ROD AND CAP STAMPED "PRM LB4905" UNLESS OTHER WISE NOTED
- FD 5/8" IRON ROD AND CAP STAMPED "PRM LB4905" UNLESS OTHER WISE NOTED

ABBREVIATIONS

- MINUTES/FEET
- SECONDS/INCHES
- DEGREES
- AC ACRES
- AL ARC LENGTH
- BOC BEGINNING OF CURVE
- CB CHORD BEARING
- CH CHORD LENGTH
- CM CONCRETE MONUMENT
- DE PRIVATE DRAINAGE EASEMENT
- DEL CENTRAL/DELTA ANGLE
- E EAST
- EOC END OF CURVE
- EX EXISTING
- FBRL FRONT BUILDING RESTRICTION LINE
- FD FOUND
- FT FOOT/FEET
- N NORTH
- NR NON-RADIAL
- NTS NOT TO SCALE
- NTI NON-TANGENT INTERSECTION
- NTL NON-TANGENT LINE
- OR/ORB OFFICIAL RECORDS BOOK
- PB PLAT BOOK
- PCC POINT OF COMPOUND CURVATURE
- PCP PERMANENT CONTROL POINT
- PCT PREFERRED COVER TYPE
- PKD PARKER-KALEN NAIL AND DISK
- PG(S) PAGE(S)
- POB POINT OF BEGINNING
- POC POINT OF COMMENCEMENT
- PRC POINT OF REVERSE CURVATURE
- P.S.E. PUBLIC SIDEWALK EASEMENT
- P.U.D. PLANNED UNIT DEVELOPMENT
- P.U.E. PUBLIC UTILITY EASEMENT
- R RADIUS
- RAW RIGHT-OF-WAY
- TYP TYPICAL
- VSD VIERA STEWARDSHIP DISTRICT

- THIS PLAT PREPARED BY -



B.S.E. CONSULTANTS, INC.
CONSULTING - ENGINEERING - LAND SURVEYING
312 SOUTH HARBOR CITY BOULEVARD, SUITE 100, MELBOURNE, FL 32901
PHONE: (321) 725-9014 FAX: (321) 725-1159
CERTIFICATE OF BUSINESS AUTHORIZATION #005
CERTIFICATE OF LAND SURVEYING BUSINESS AUTHORIZATION #L20004905

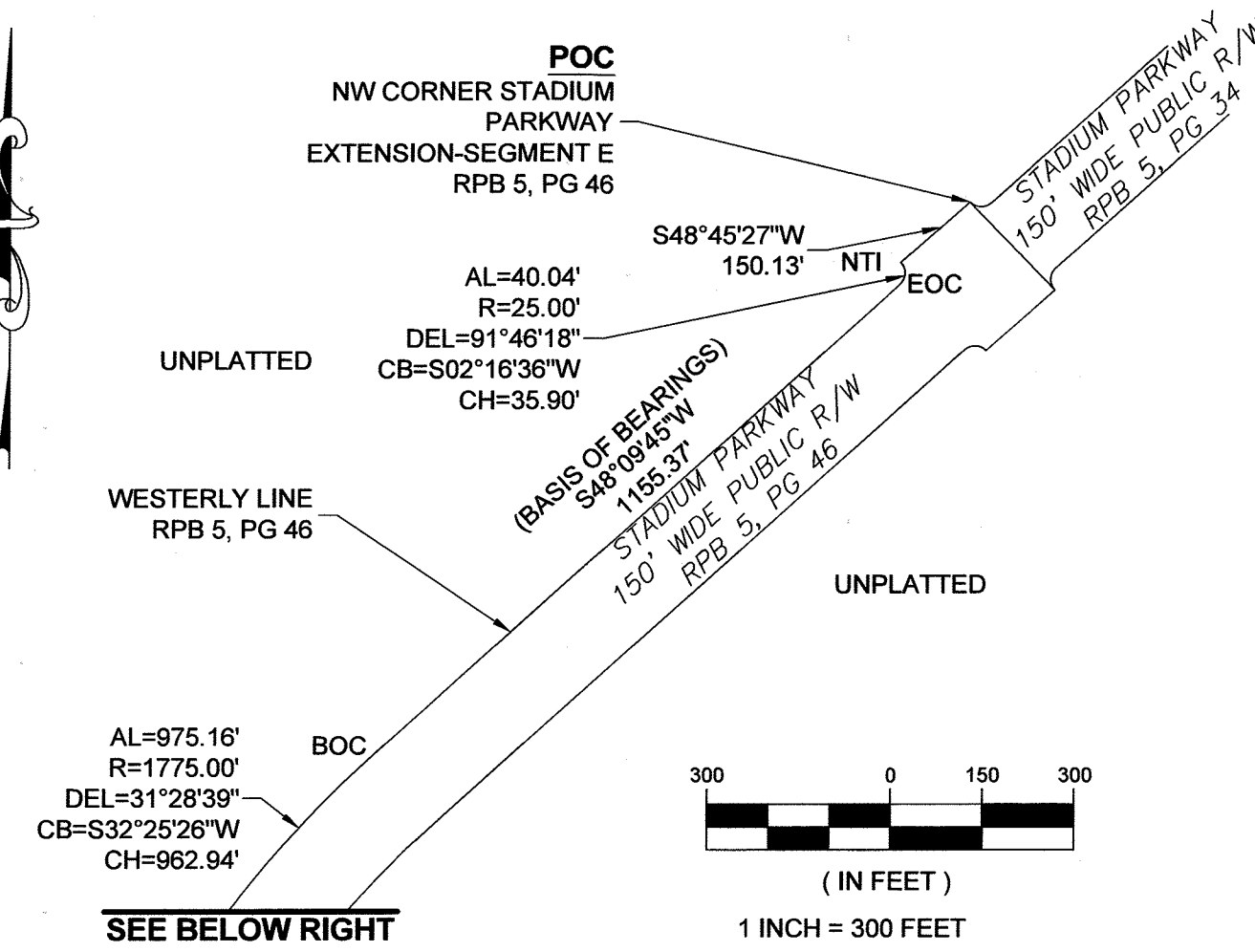
DATE: 11/23/21
DESIGN/DRAWN: HAK/WFV
DRAWING# 11558_301_001
PROJECT# 11558

DEL WEBB AT VIERA - PHASE 1

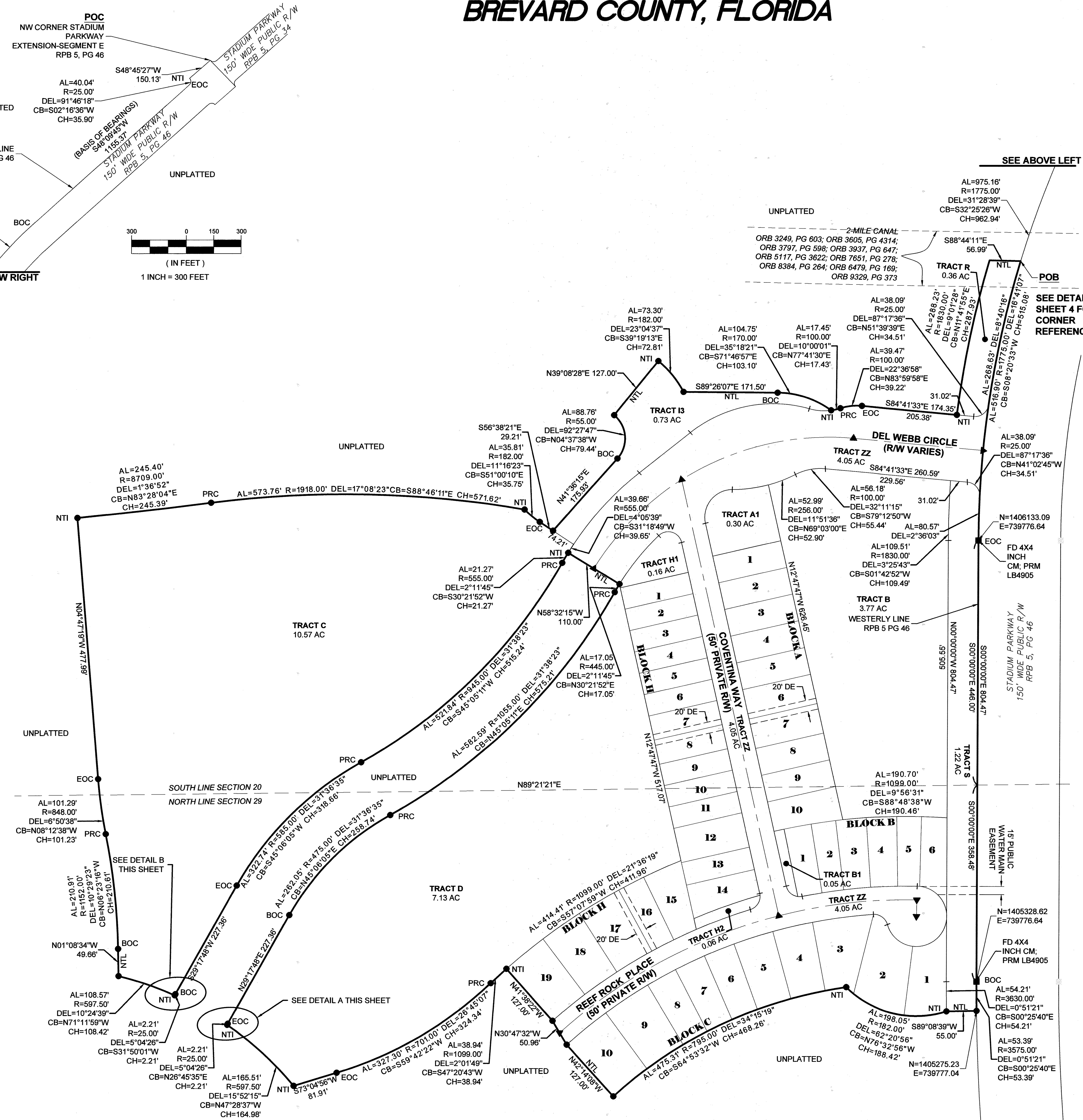
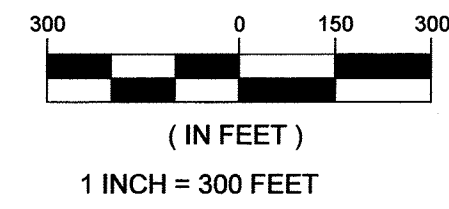
SECTIONS 20 AND 29, TOWNSHIP 26 SOUTH, RANGE 36 EAST

BREVARD COUNTY, FLORIDA

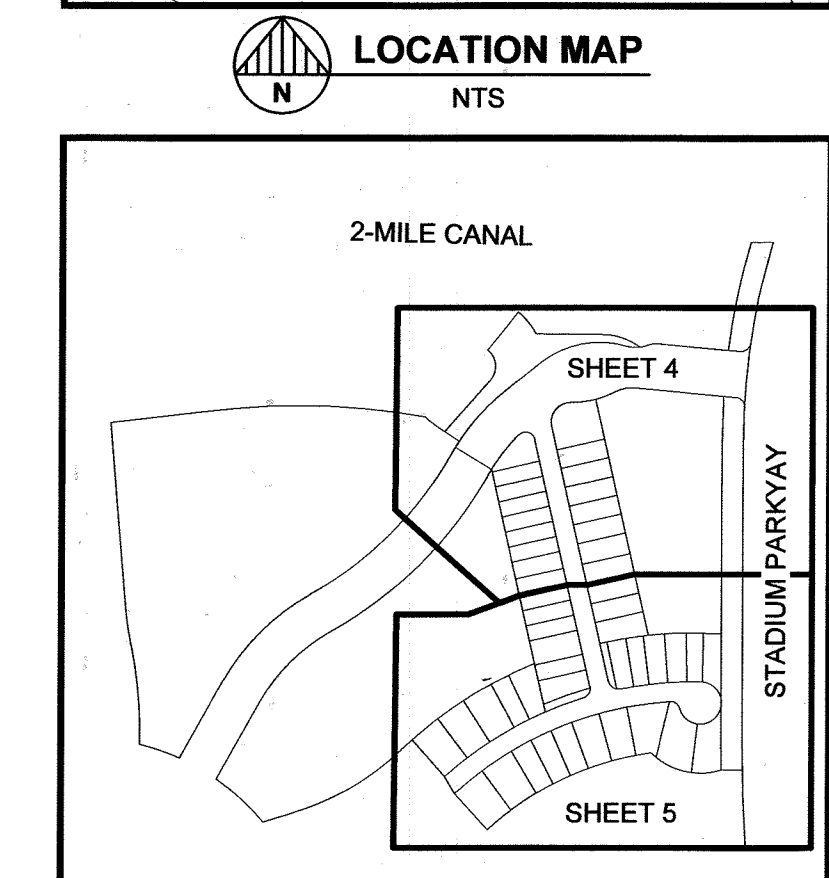
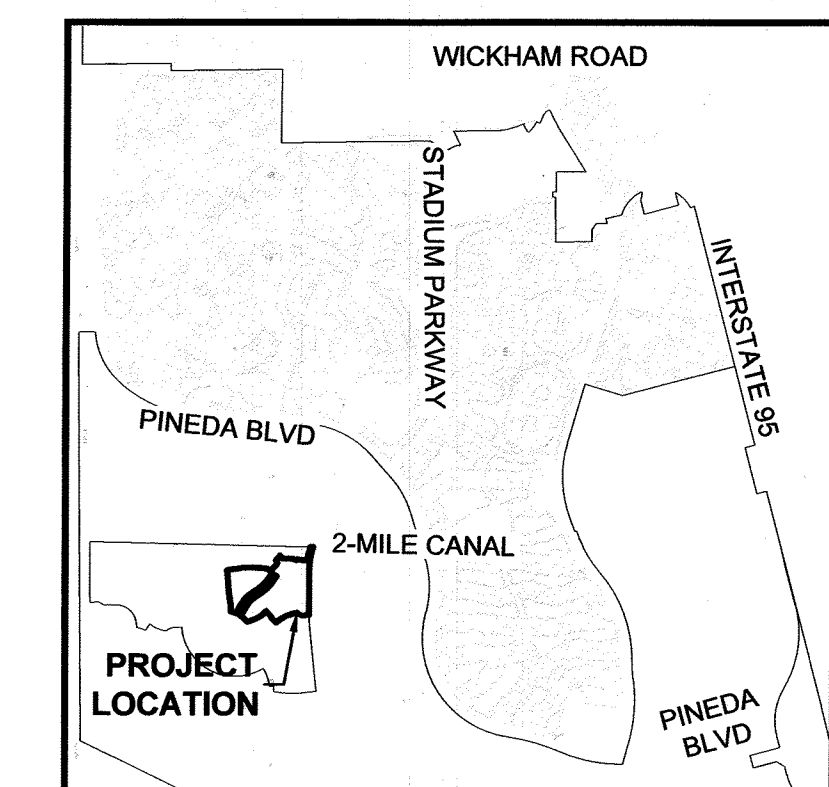
PLAT BOOK _____, PAGE _____
SHEET 3 OF 5
SECTIONS 20 AND 29, TOWNSHIP 26 SOUTH, RANGE 36 EAST



SEE BELOW RIGHT

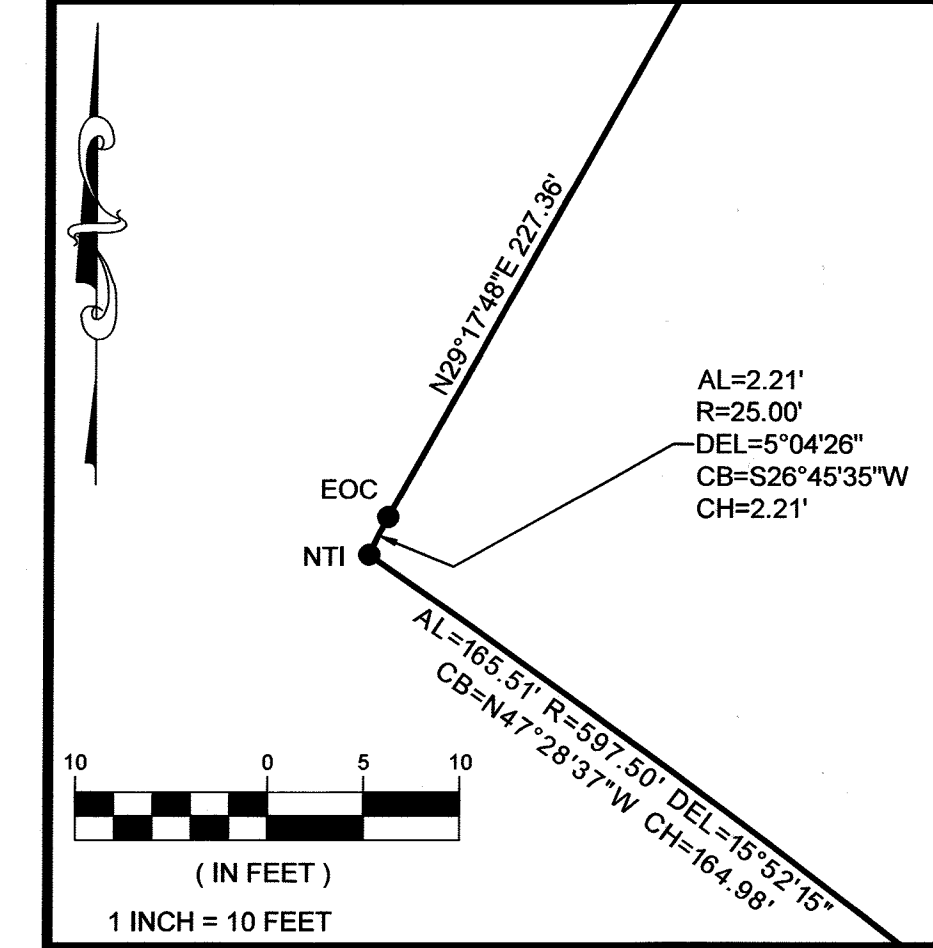


- #### SURVEY SYMBOL LEGEND
- SECTION CORNER, MARKED AS NOTED
 - PERMANENT REFERENCE MONUMENT (PRM); SET 4X4 INCH CONCRETE MONUMENT WITH DISK STAMPED PRM LB4905, UNLESS OTHERWISE NOTED
 - PERMANENT CONTROL POINT (PCP); SET MAG NAIL AND DISK STAMPED PCP LB4905, UNLESS OTHERWISE NOTED
 - SET 5/8" IRON ROD AND CAP STAMPED "PRM LB4905" UNLESS OTHERWISE NOTED
 - FD 5/8" IRON ROD AND CAP STAMPED "PRM LB4905" UNLESS OTHERWISE NOTED

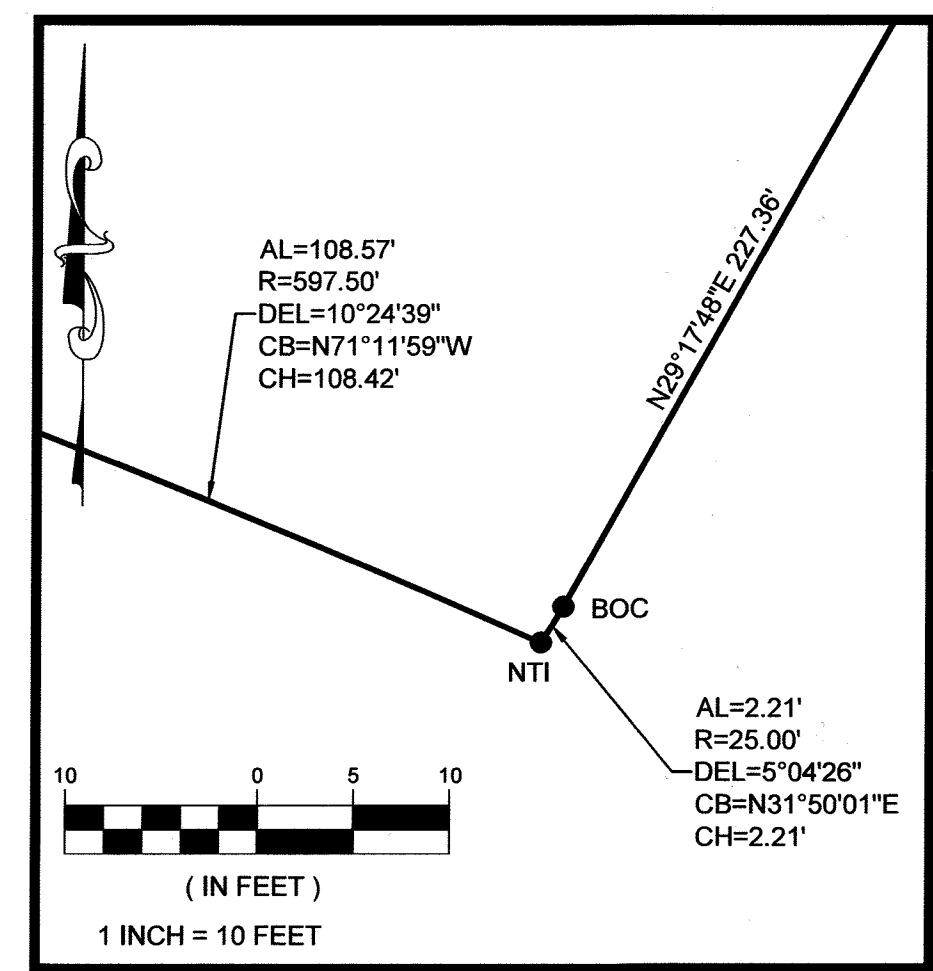


ABBREVIATIONS

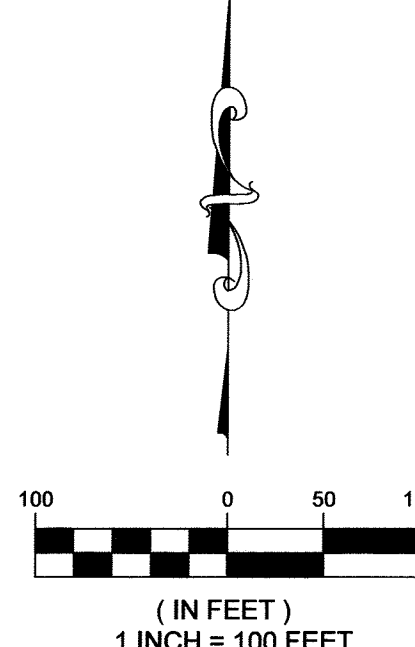
- MINUTES/FEET
- SECONDS/INCHES
- DEGREES
- AC ACRES
- AL ARC LENGTH
- BOC BEGINNING OF CURVE
- CB CHORD BEARING
- CH CHORD LENGTH
- CM CONCRETE MONUMENT
- DE PRIVATE DRAINAGE EASEMENT
- DEL CENTRAL/DELTA ANGLE
- E EAST
- EOC END OF CURVE
- EX EXISTING
- FBRL FRONT BUILDING RESTRICTION LINE
- FD FOUND
- FT FOOT/FEET
- N NORTH
- NR NON-RADIAL
- NTS NOT TO SCALE
- NTI NON-TANGENT INTERSECTION
- NTL NON-TANGENT LINE
- OR/ORB OFFICIAL RECORDS BOOK
- PB PLAT BOOK
- PCC POINT OF COMPOUND CURVATURE
- PCP PERMANENT CONTROL POINT
- PCT PREFERRED COVER TYPE
- PKD PARKER-KALEN NAIL AND DISK
- PG(S) PAGE(S)
- POB POINT OF BEGINNING
- POC POINT OF COMMENCEMENT
- PRC POINT OF REVERSE CURVATURE
- P.S.E. PUBLIC SIDEWALK EASEMENT
- P.U.D. PLANNED UNIT DEVELOPMENT
- P.U.E. PUBLIC UTILITY EASEMENT
- R RADIUS
- R/W RIGHT-OF-WAY
- TYP TYPICAL
- VSD VIERA STEWARDSHIP DISTRICT



DETAIL A



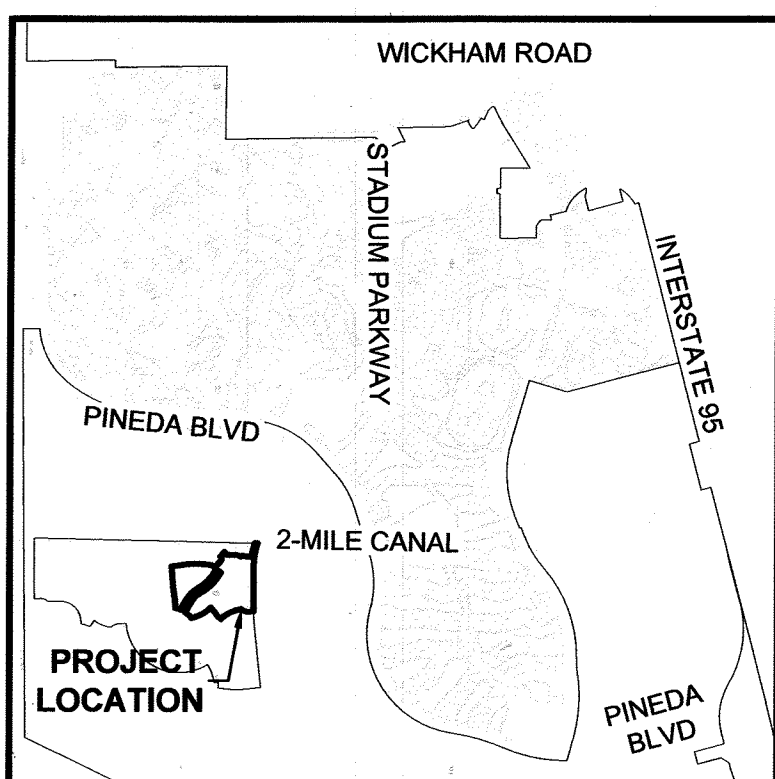
DETAIL B



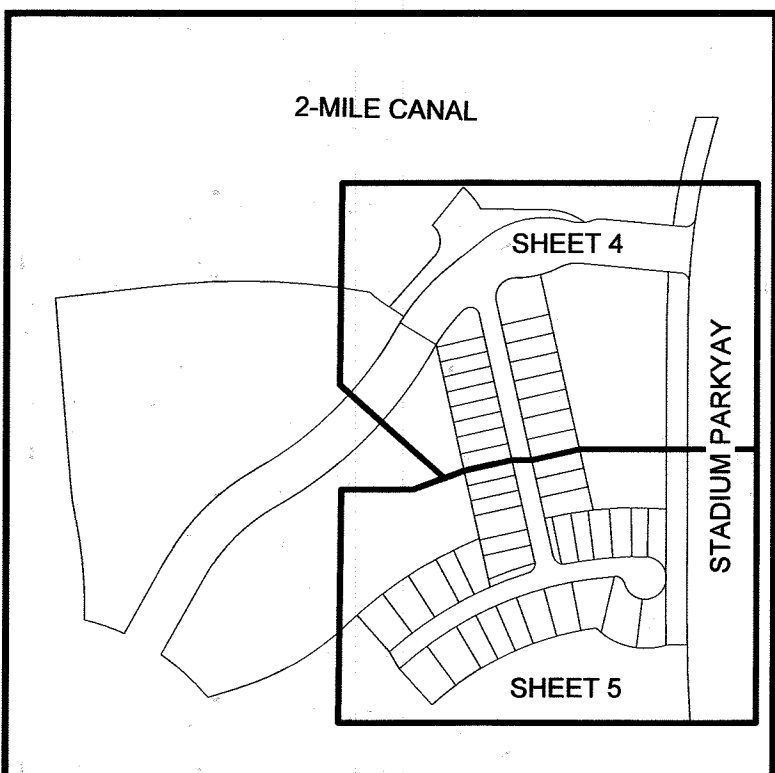
- THIS PLAT PREPARED BY -

DEL WEBB AT VIERA - PHASE 1
SECTIONS 20 AND 29, TOWNSHIP 26 SOUTH, RANGE 36 EAST
BREVARD COUNTY, FLORIDA

PLAT BOOK _____, PAGE _____
SHEET 4 OF 5
SECTIONS 20 AND 29, TOWNSHIP 26 SOUTH, RANGE 36 EAST



LOCATION MAP
NTS



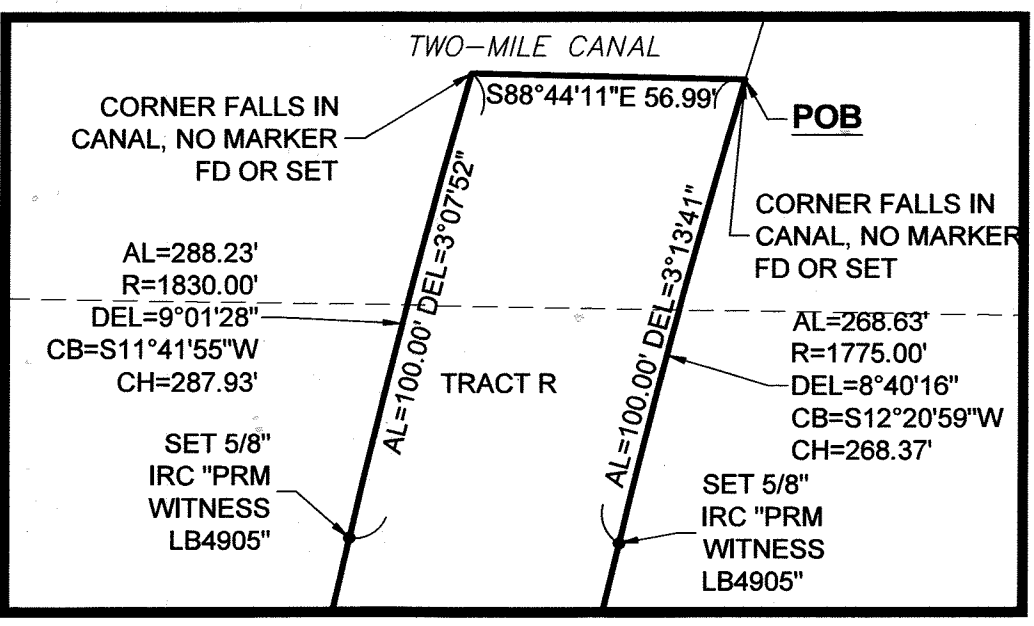
KEY MAP
NTS

ABBREVIATIONS

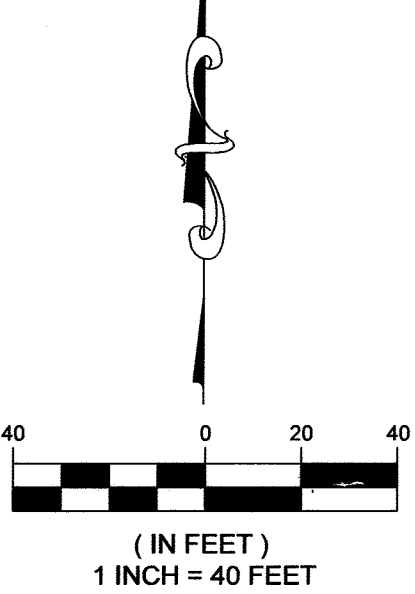
- ' MINUTES/FEET
- " SECONDS/INCHES
- ° DEGREES
- AC ACRES
- AL ARC LENGTH
- BOC BEGINNING OF CURVE
- CB CHORD BEARING
- CH CHORD LENGTH
- CM CONCRETE MONUMENT
- DE PRIVATE DRAINAGE EASEMENT
- DEL CENTRAL/DELTA ANGLE
- E EAST
- EOC END OF CURVE
- EX EXISTING
- FBRL FRONT BUILDING RESTRICTION LINE
- FD FOUND
- FT FOOT/FEET
- N NORTH
- NR NON-RADIAL
- NTS NOT TO SCALE
- NTI NON-TANGENT INTERSECTION
- NTL NON-TANGENT LINE
- OR/ORB OFFICIAL RECORDS BOOK
- PB PLAT BOOK
- PCC POINT OF COMPOUND CURVATURE
- PCP PERMANENT CONTROL POINT
- PCT PREFERRED COVER TYPE
- PKD PARKER-KALEN NAIL AND DISK
- PG(S) PAGE(S)
- POB POINT OF BEGINNING
- POC POINT OF COMMENCEMENT
- PRC POINT OF REVERSE CURVATURE
- P.S.E. PUBLIC SIDEWALK EASEMENT
- P.U.D. PLANNED UNIT DEVELOPMENT
- P.U.E. PUBLIC UTILITY EASEMENT
- R RADIUS
- R/W RIGHT-OF-WAY
- TYP TYPICAL
- VSD VIERA STEWARDSHIP DISTRICT

SURVEY SYMBOL LEGEND

- SECTION CORNER, MARKED AS NOTED
- PERMANENT REFERENCE MONUMENT (PRM); SET 4X4 INCH CONCRETE MONUMENT WITH DISK STAMPED PRM LB4905, UNLESS OTHERWISE NOTED
- PERMANENT CONTROL POINT (PCP); SET MAG NAIL AND DISK STAMPED PCP LB4905, UNLESS OTHERWISE NOTED
- SET 5/8" IRON ROD AND CAP STAMPED "PRM LB4905" UNLESS OTHERWISE NOTED
- FD 5/8" IRON ROD AND CAP STAMPED "PRM LB4905" UNLESS OTHERWISE NOTED



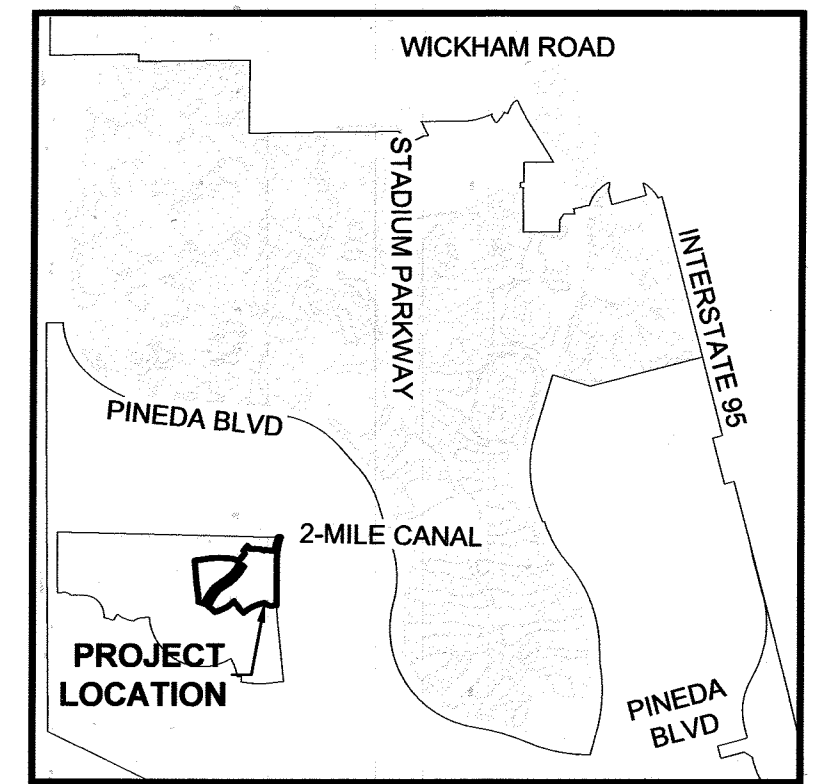
SEE SHEET 5 OF 5



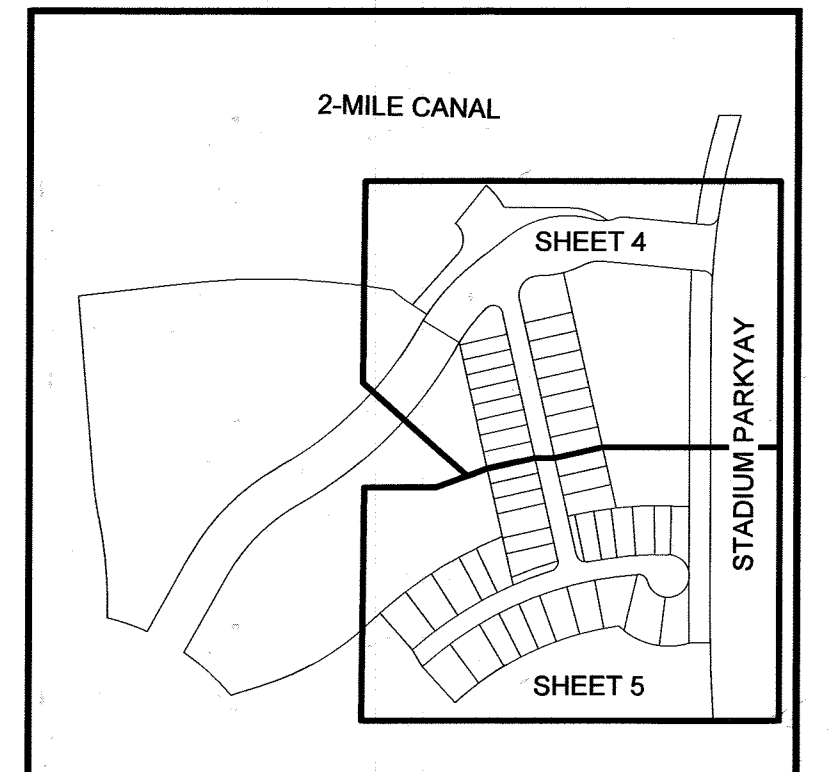
THIS PLAT PREPARED BY -
B.S.E. CONSULTANTS, INC.
CONSULTING - ENGINEERING - LAND SURVEYING
312 SOUTH HANCOCK CITY BOULEVARD, SUITE 100, VIERA, FL 32981
PHONE: (321) 755-2624 FAX: (321) 755-1111
CERTIFICATE OF LAND SURVEYING BUSINESS AUTHORIZATION: 18004405
DATE: 11/22/21
DESIGN/DRAWN: HAK/WFV
DRAWING# 11556_301_001
PROJECT# 11556

DEL WEBB AT VIERA - PHASE 1
SECTIONS 20 AND 29, TOWNSHIP 26 SOUTH, RANGE 36 EAST
BREVARD COUNTY, FLORIDA

PLAT BOOK _____, PAGE _____
SHEET 5 OF 5
SECTIONS 20 AND 29, TOWNSHIP 26 SOUTH, RANGE 36 EAST



LOCATION MAP
NTS



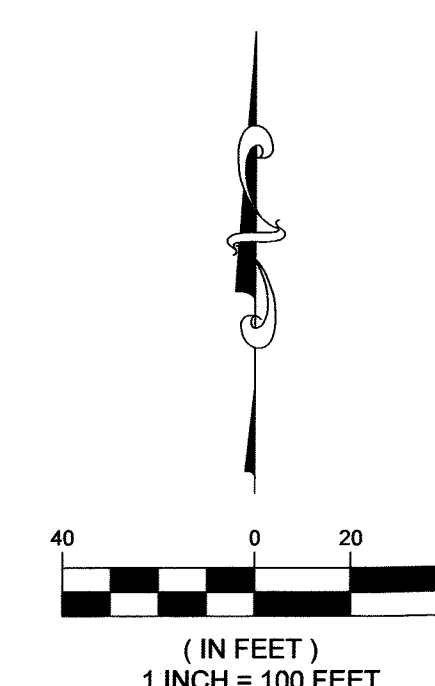
KEY MAP
NTS

ABBREVIATIONS

- ' MINUTES/FEET
- " SECONDS/INCHES
- ° DEGREES
- AC ACRES
- AL ARC LENGTH
- BOC BEGINNING OF CURVE
- CB CHORD BEARING
- CH CHORD LENGTH
- CM CONCRETE MONUMENT
- DE PRIVATE DRAINAGE EASEMENT
- DEL CENTRAL/DELTA ANGLE
- E EAST
- EOC END OF CURVE
- EX EXISTING
- FBRL FRONT BUILDING RESTRICTION LINE
- FD FOUND
- FT FOOT/FEET
- N NORTH
- NR NON-RADIAL
- NTS NOT TO SCALE
- NTI NON-TANGENT INTERSECTION
- NTL NON-TANGENT LINE
- OR/ORB OFFICIAL RECORDS BOOK
- PB PLAT BOOK
- PCC POINT OF COMPOUND CURVATURE
- PCP PERMANENT CONTROL POINT
- PCT PREFERRED COVER TYPE
- PKD PARKER-KALEN NAIL AND DISK
- PG(S) PAGE(S)
- POB POINT OF BEGINNING
- POC POINT OF COMMENCEMENT
- PRC POINT OF REVERSE CURVATURE
- P.S.E. PUBLIC SIDEWALK EASEMENT
- P.U.D. PLANNED UNIT DEVELOPMENT
- P.U.E. PUBLIC UTILITY EASEMENT
- R RADIUS
- R/W RIGHT-OF-WAY
- TYP TYPICAL
- VSD VIERA STEWARDSHIP DISTRICT

SURVEY SYMBOL LEGEND

- SECTION CORNER, MARKED AS NOTED
- PERMANENT REFERENCE MONUMENT (PRM); SET 4X4 INCH CONCRETE MONUMENT WITH DISK STAMPED PRM LB4905, UNLESS OTHERWISE NOTED
- PERMANENT CONTROL POINT (PCP); SET MAG NAIL AND DISK STAMPED PCP LB4905, UNLESS OTHERWISE NOTED
- SET 5/8" IRON ROD AND CAP STAMPED "PRM LB4905" UNLESS OTHERWISE NOTED
- FD 5/8" IRON ROD AND CAP STAMPED "PRM LB4905" UNLESS OTHERWISE NOTED



- THIS PLAT PREPARED BY -

B.S.E. CONSULTANTS, INC.
CONSULTING - ENGINEERING - LAND SURVEYING
1312 SOUTH HARBOR CITY BOULEVARD, SUITE 400, BOCA RATON, FL 33432
PHONE: (561) 755-2800 FAX: (561) 755-1110
CERTIFICATE OF LAND SURVEYING BUSINESS AUTHORIZATION: 18084905
DATE: 12/6/21
DESIGN/DRAWN: HAK/WVF
DRAWING#: 11568_301_001
PROJECT#: 11568

H:\Projects\Folder1\1568\Drawings\1568_301\1568_301.dwg December 6, 2021 11:52:23 AM DF