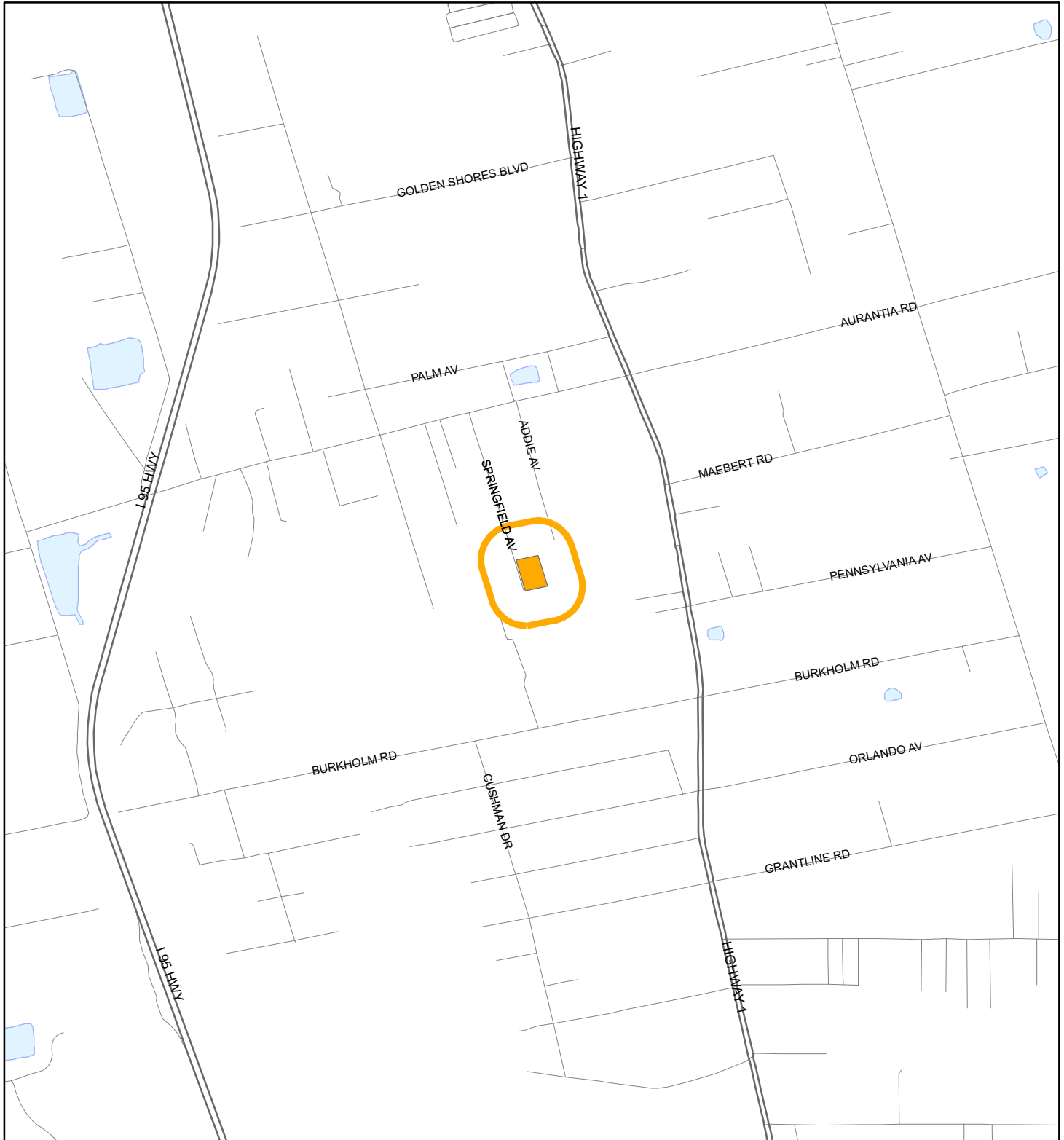


# LOCATION MAP

FERNANDEZ, BRUCE

21PZ00032 SMALL SCALE AMENDMENT 21S.07





1:24,000 or 1 inch = 2,000 feet

Buffer Distance: 500 feet

This map was compiled from recorded documents and does not reflect an actual survey. The Brevard County Board of County Commissioners does not assume responsibility for errors or omissions hereon.

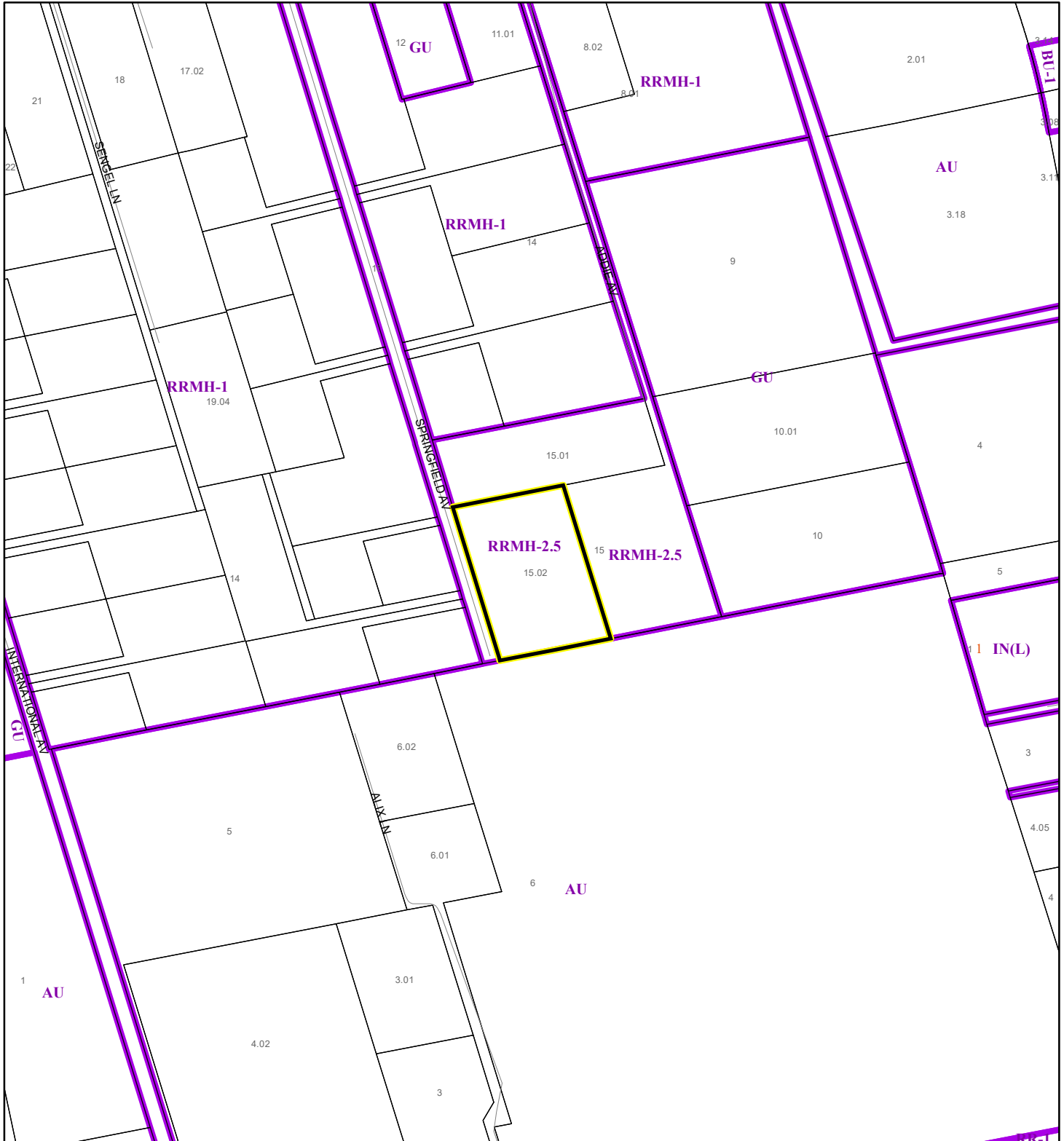
Produced by BoCC - GIS Date: 11/22/2021

 Buffer  
 Subject Property

# ZONING MAP

FERNANDEZ, BRUCE


21PZ00032 SMALL SCALE AMENDMENT 21S.07



1:4,800 or 1 inch = 400 feet

This map was compiled from recorded documents and does not reflect an actual survey. The Brevard County Board of County Commissioners does not assume responsibility for errors or omissions hereon.

Produced by BoCC - GIS Date: 11/22/2021

 Subject Property

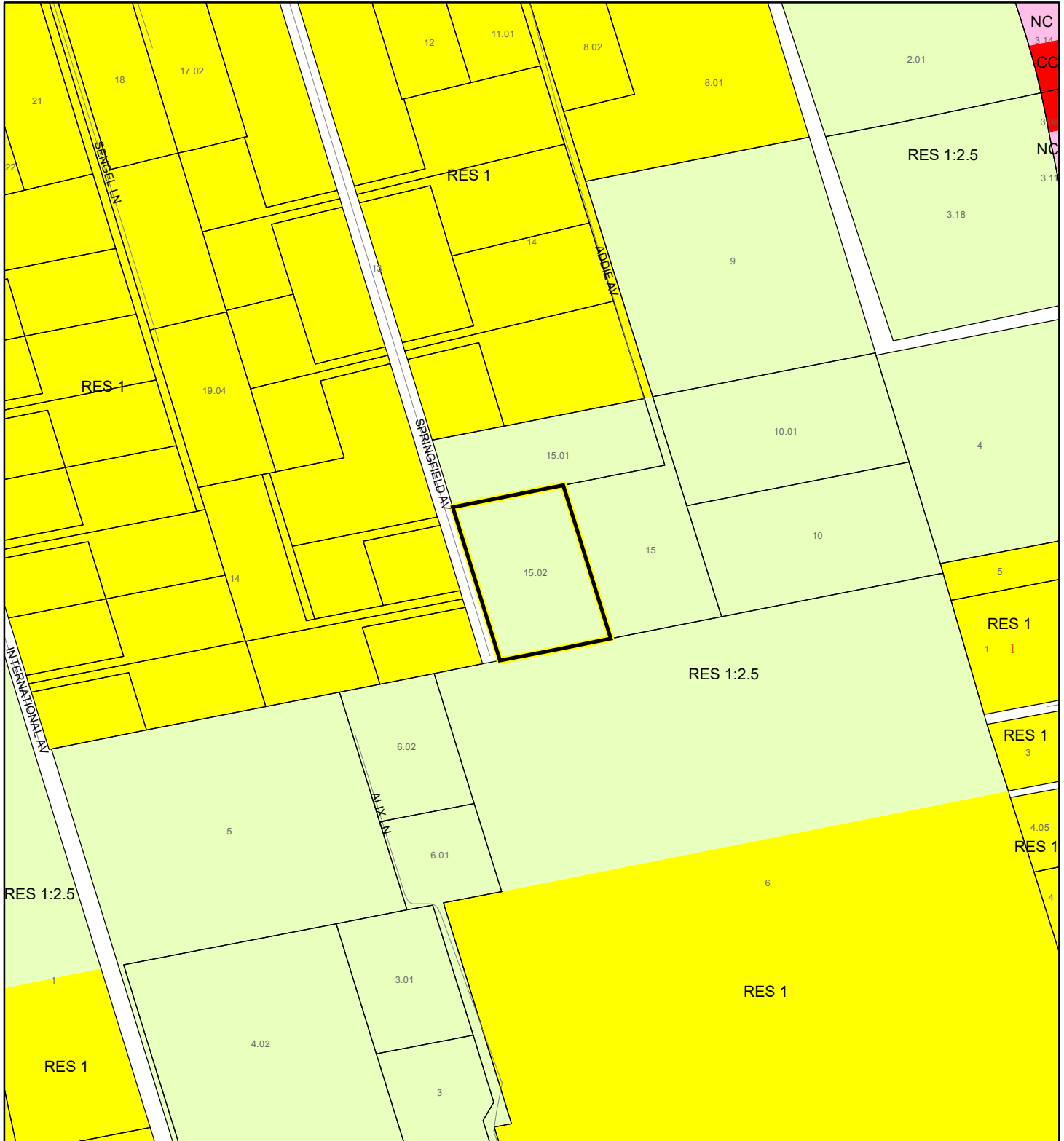
 Parcels

 Zoning



# FUTURE LAND USE MAP

FERNANDEZ, BRUCE

21PZ00032 SMALL SCALE AMENDMENT 21S.07



1:4,800 or 1 inch = 400 feet

 Subject Property  
 Parcels

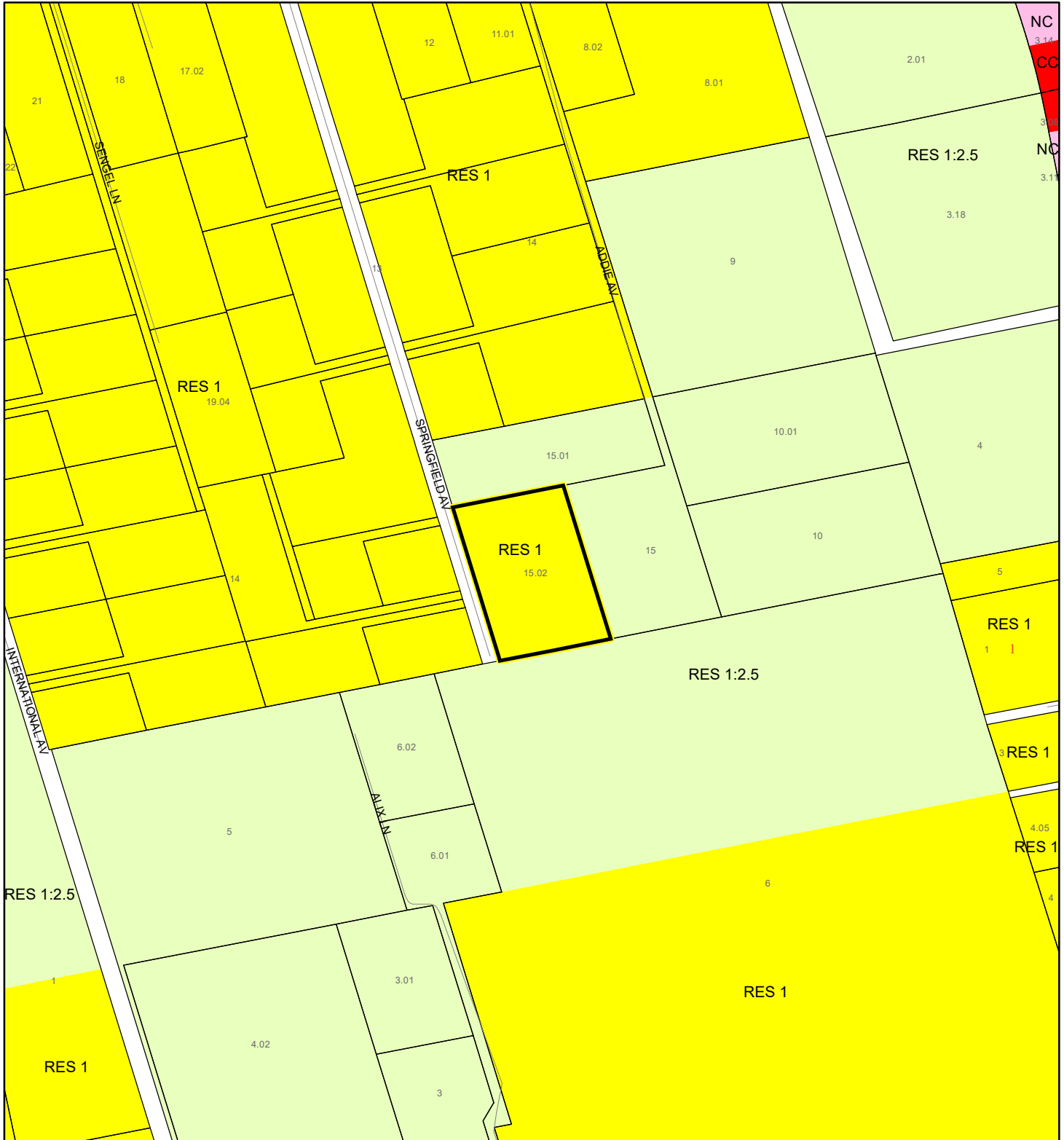
This map was compiled from recorded documents and does not reflect an actual survey. The Brevard County Board of County Commissioners does not assume responsibility for errors or omissions hereon.

Produced by BoCC - GIS Date: 11/22/2021



# PROPOSED FUTURE LAND USE MAP

FERNANDEZ, BRUCE

21PZ00032 SMALL SCALE AMENDMENT 21S.07



1:4,800 or 1 inch = 400 feet

 Subject Property  
 Parcels

This map was compiled from recorded documents and does not reflect an actual survey. The Brevard County Board of County Commissioners does not assume responsibility for errors or omissions hereon.

Produced by BoCC - GIS Date: 11/22/2021



# AERIAL MAP

FERNANDEZ, BRUCE

21PZ00032 SMALL SCALE AMENDMENT 21S.07



1:4,800 or 1 inch = 400 feet

PHOTO YEAR: 2021

This map was compiled from recorded documents and does not reflect an actual survey. The Brevard County Board of County Commissioners does not assume responsibility for errors or omissions hereon.

Produced by BoCC - GIS Date: 11/22/2021

 Subject Property

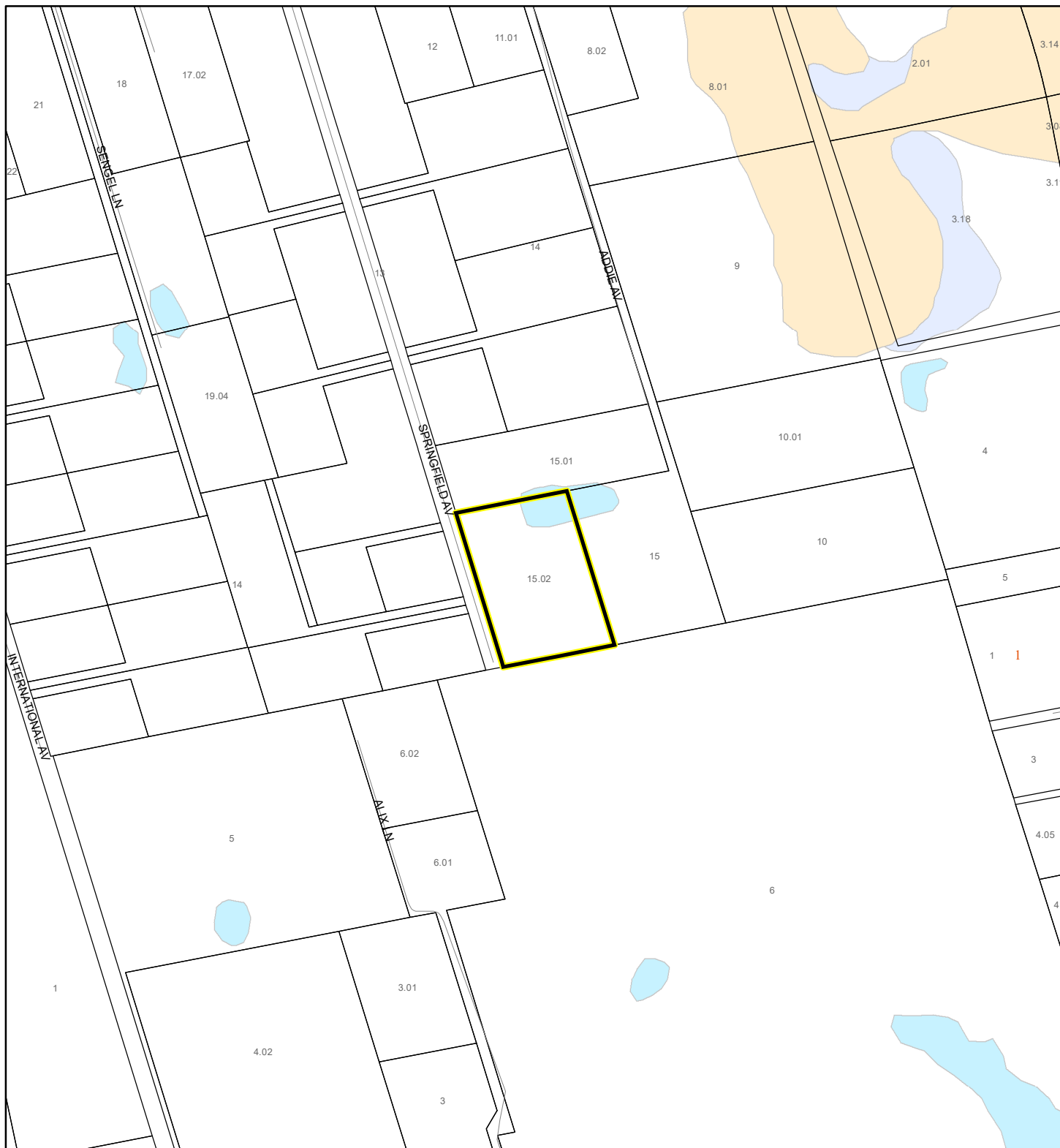
 Parcels



# NWI WETLANDS MAP

FERNANDEZ, BRUCE

21PZ00032 SMALL SCALE AMENDMENT 21S.07






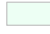

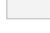




1:4,800 or 1 inch = 400 feet

This map was compiled from recorded documents and does not reflect an actual survey. The Brevard County Board of County Commissioners does not assume responsibility for errors or omissions hereon.

Produced by BoCC - GIS Date: 11/22/2021

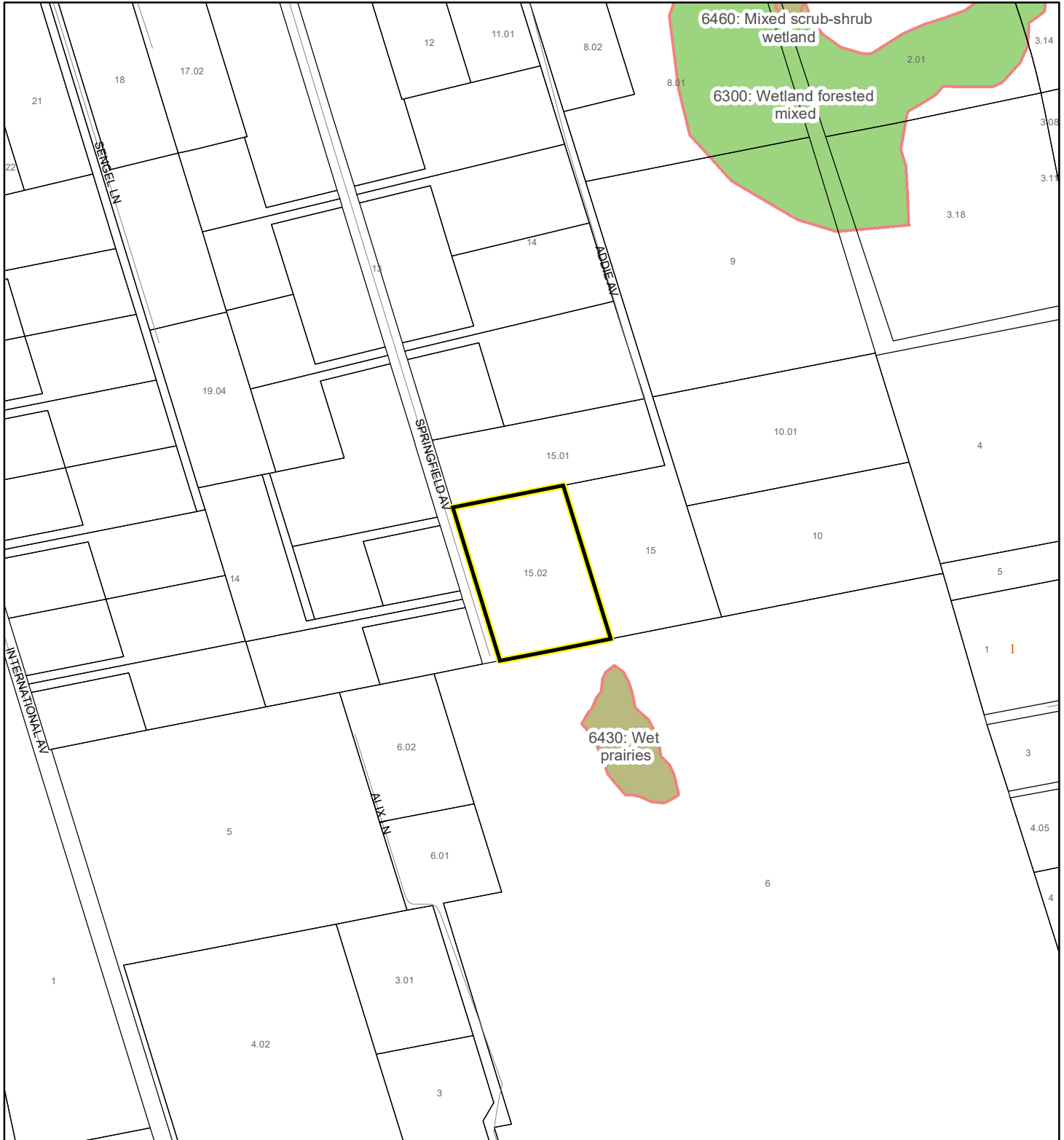
## National Wetlands Inventory (NWI)

 Estuarine and Marine Deepwater	 Freshwater Pond
 Estuarine and Marine Wetland	 Lake
 Freshwater Emergent Wetland	 Other
 Freshwater Forested/Shrub Wetland	 Riverine
	 Subject Property
	 Parcels

# SJRWMD FLUCCS WETLANDS - 6000 Series MAP

FERNANDEZ, BRUCE

21PZ00032 SMALL SCALE AMENDMENT 21S.07



1:4,800 or 1 inch = 400 feet

This map was compiled from recorded documents and does not reflect an actual survey. The Brevard County Board of County Commissioners does not assume responsibility for errors or omissions hereon.

Produced by BoCC - GIS Date: 11/22/2021

## SJRWMD FLUCCS WETLANDS

- Wetland Hardwood Forests - Series 6100
- Wetland Coniferous Forest - Series 6200
- Wetland Forested Mixed - Series 6300
- Vegetated Non-Forested Wetlands - Series 6400
- Non-Vegetated Wetland - Series 6500

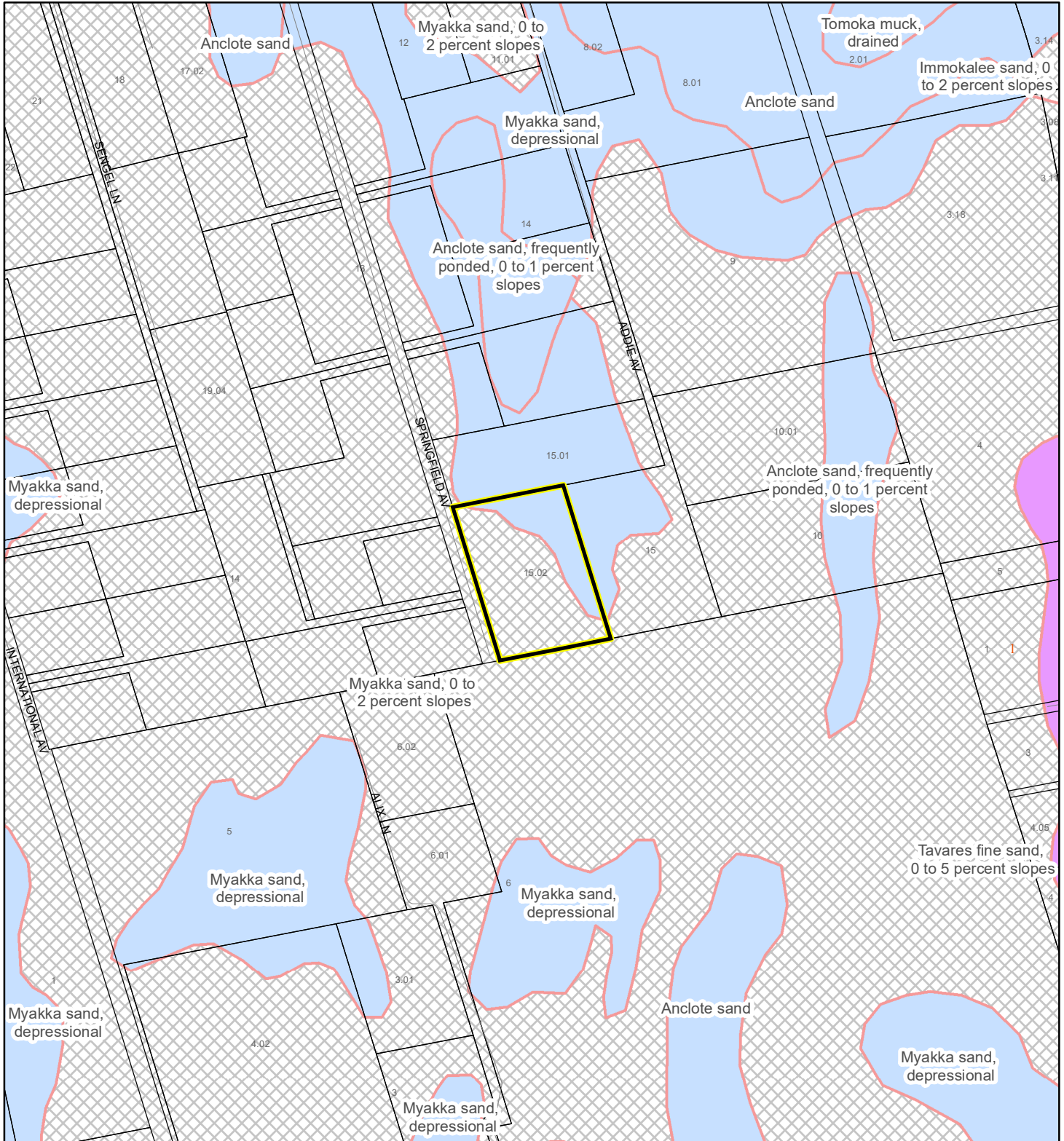
Subject Property

Parcels

# USDA SCSSS SOILS MAP

FERNANDEZ, BRUCE

21PZ00032 SMALL SCALE AMENDMENT 21S.07



1:4,800 or 1 inch = 400 feet

This map was compiled from recorded documents and does not reflect an actual survey. The Brevard County Board of County Commissioners does not assume responsibility for errors or omissions hereon.

Produced by BoCC - GIS Date: 11/22/2021

## USDA SCSSS Soils

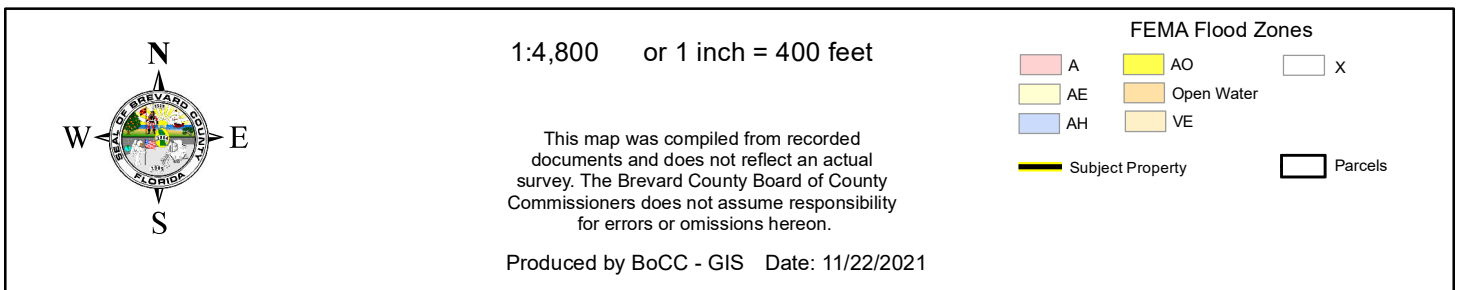
- Aquifer and Hydric
- Aquifer
- Hydric
- None

Subject Property

Parcels



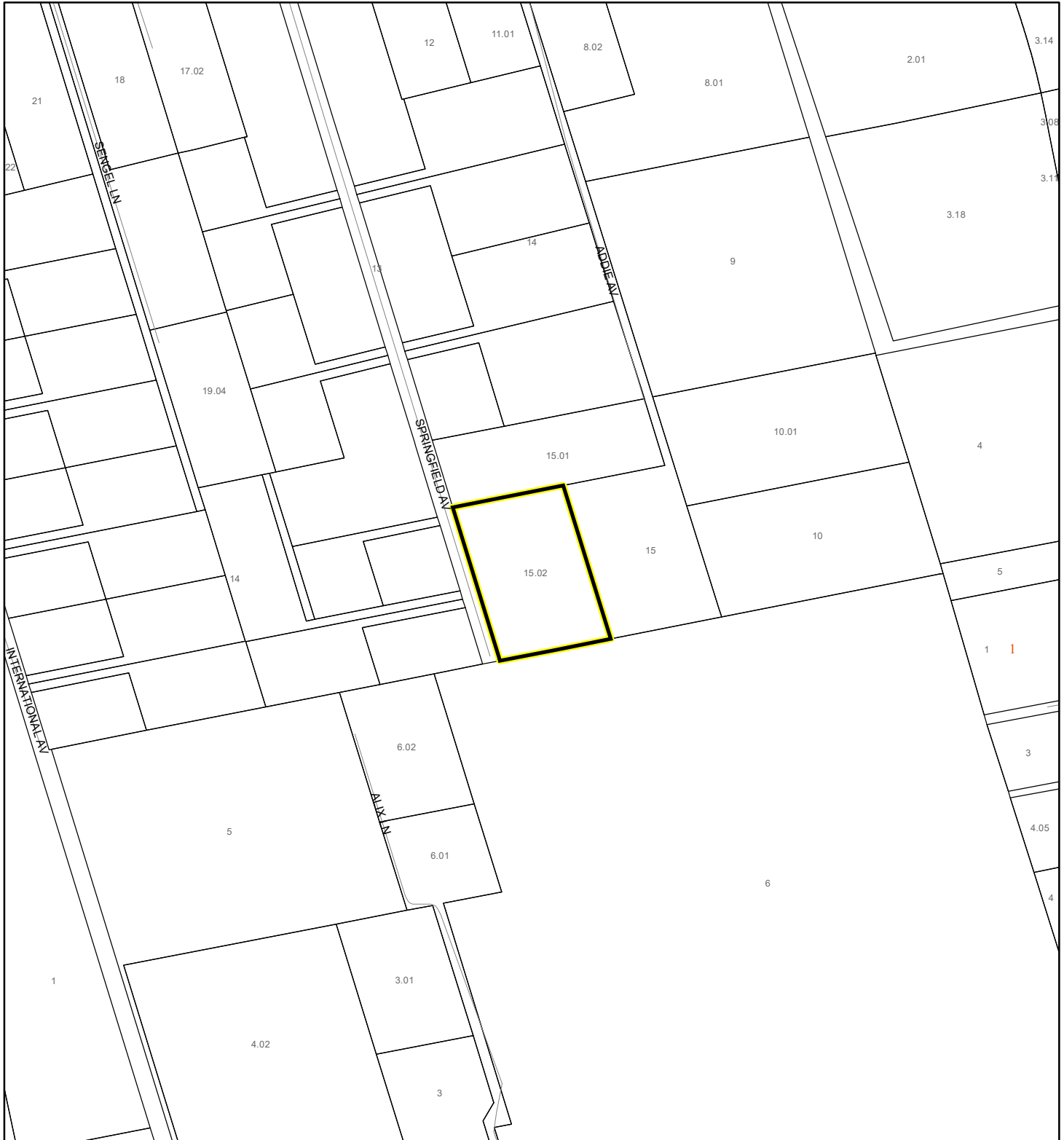
FERNANDEZ, BRUCE  
21PZ00032 SMALL SCALE AMENDMENT 21S.07



# COASTAL HIGH HAZARD AREA MAP

FERNANDEZ, BRUCE

21PZ00032 SMALL SCALE AMENDMENT 21S.07



1:4,800 or 1 inch = 400 feet


This map was compiled from recorded documents and does not reflect an actual survey. The Brevard County Board of County Commissioners does not assume responsibility for errors or omissions hereon.

Produced by BoCC - GIS Date: 11/22/2021

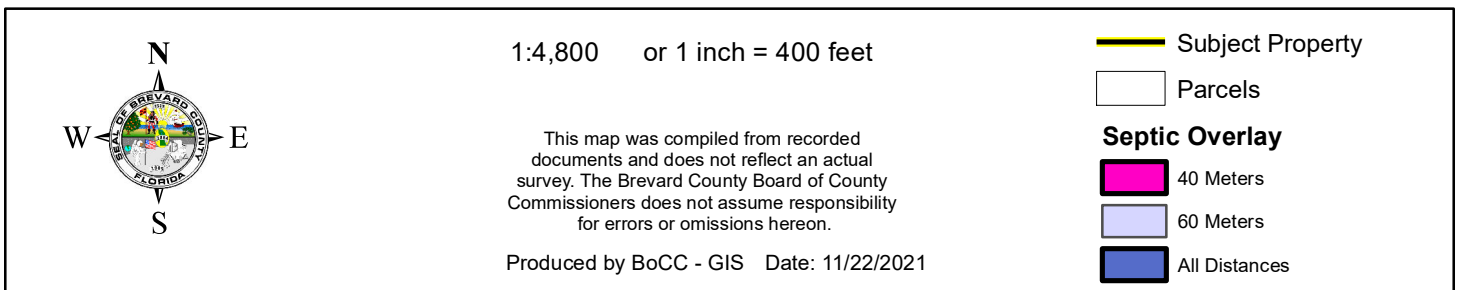
 Subject Property

 Parcels

**Coastal High Hazard Area**

 SurgeZoneCat1

FERNANDEZ, BRUCE  
21PZ00032 SMALL SCALE AMENDMENT 21S.07

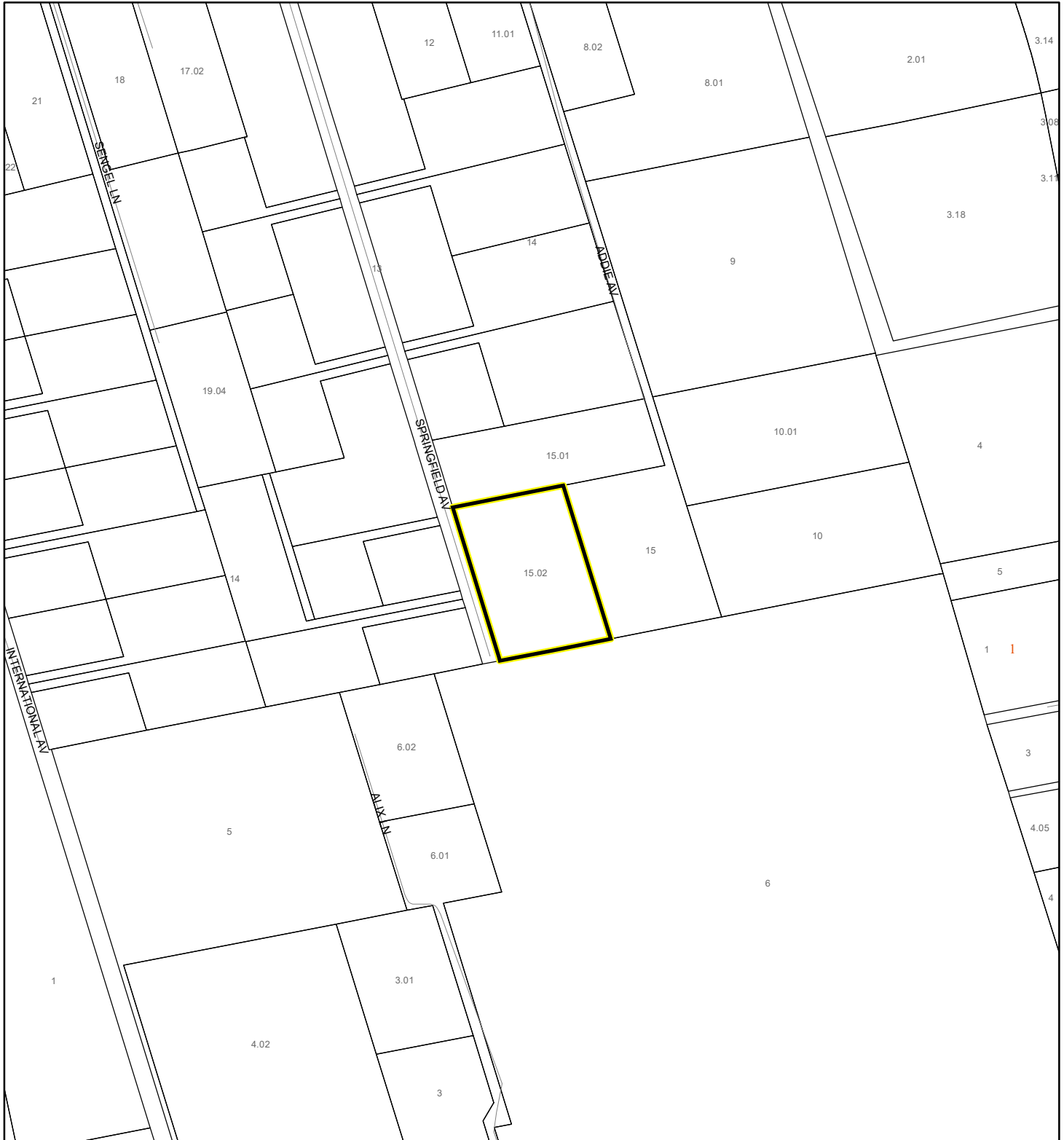




# EAGLE NESTS MAP

FERNANDEZ, BRUCE

21PZ00032 SMALL SCALE AMENDMENT 21S.07



1:4,800 or 1 inch = 400 feet

This map was compiled from recorded documents and does not reflect an actual survey. The Brevard County Board of County Commissioners does not assume responsibility for errors or omissions hereon.

Produced by BoCC - GIS Date: 11/22/2021

 Subject Property

 Parcels

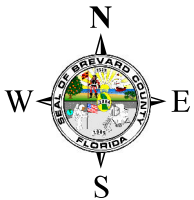
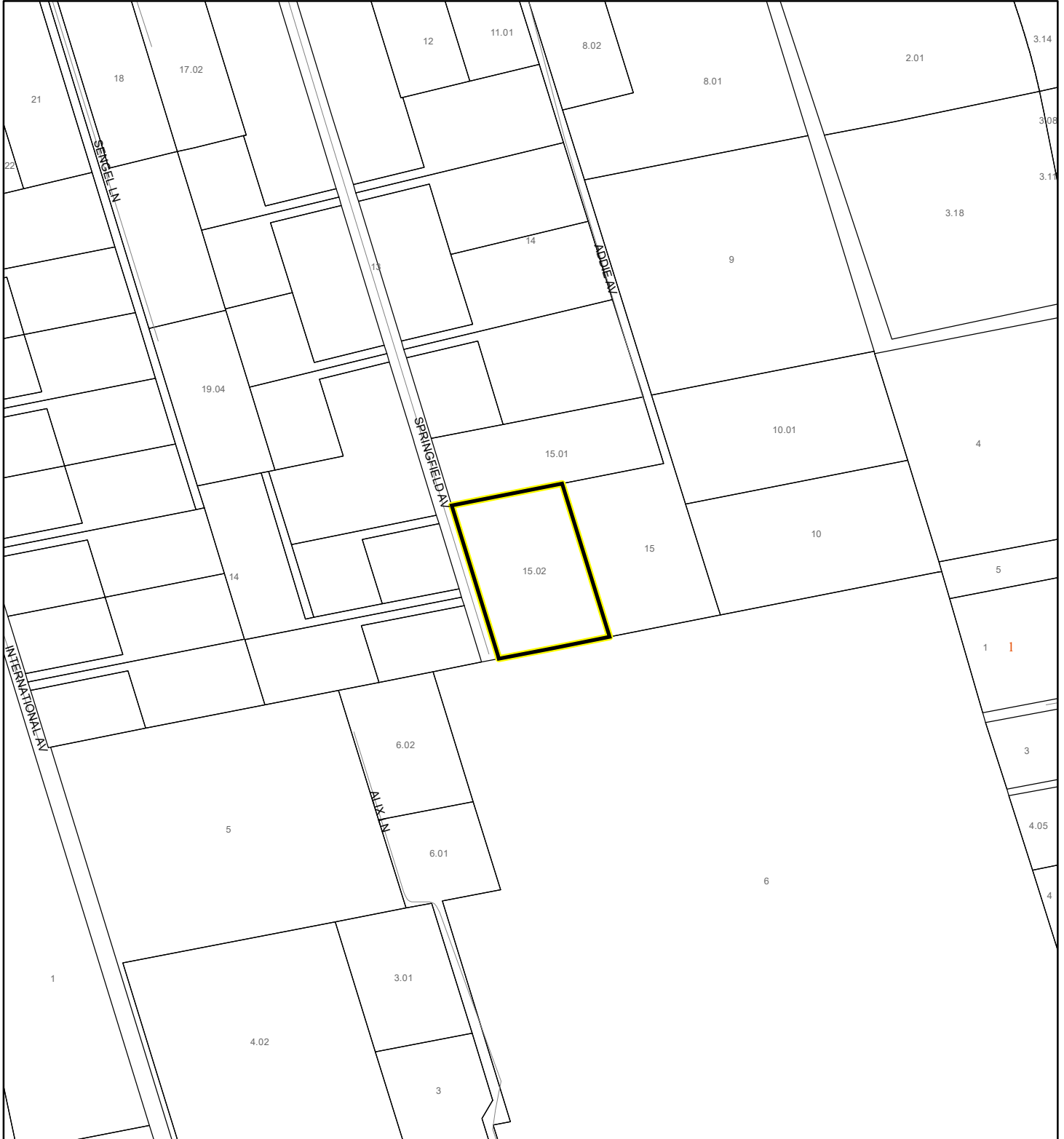


Eagle Nests  
FWS 2010

# SCRUB JAY OCCUPANCY MAP

FERNANDEZ, BRUCE

21PZ00032 SMALL SCALE AMENDMENT 21S.07



1:4,800      or 1 inch = 400 feet

This map was compiled from recorded documents and does not reflect an actual survey. The Brevard County Board of County Commissioners does not assume responsibility for errors or omissions hereon.

Produced by BoCC - GIS    Date: 11/22/2021

**Subject Property**

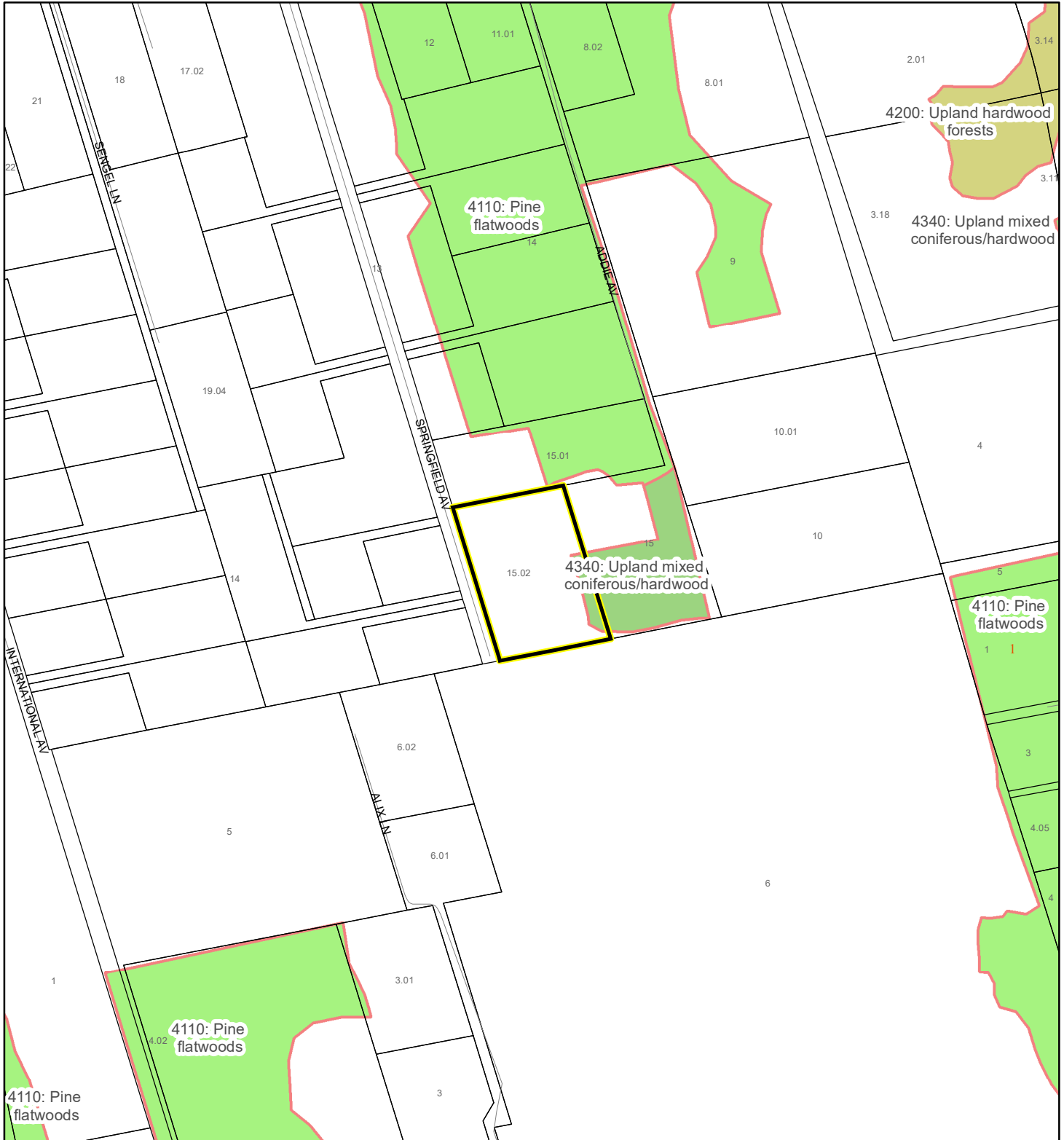
☐ Parcels

 Scrub Jay Occupancy

# SJRWMD FLUCCS UPLAND FORESTS - 4000 Series MAP

FERNANDEZ, BRUCE

21PZ00032 SMALL SCALE AMENDMENT 21S.07



1:4,800 or 1 inch = 400 feet

This map was compiled from recorded documents and does not reflect an actual survey. The Brevard County Board of County Commissioners does not assume responsibility for errors or omissions hereon.

Produced by BoCC - GIS Date: 11/22/2021

## SJRWMD FLUCCS Upland Forests

- Upland Coniferous Forest - 4100 Series
- Upland Hardwood Forest - 4200 Series
- Upland Mixed Forest - 4300 Series
- Tree Plantations - 4400 Series

Subject Property

Parcels