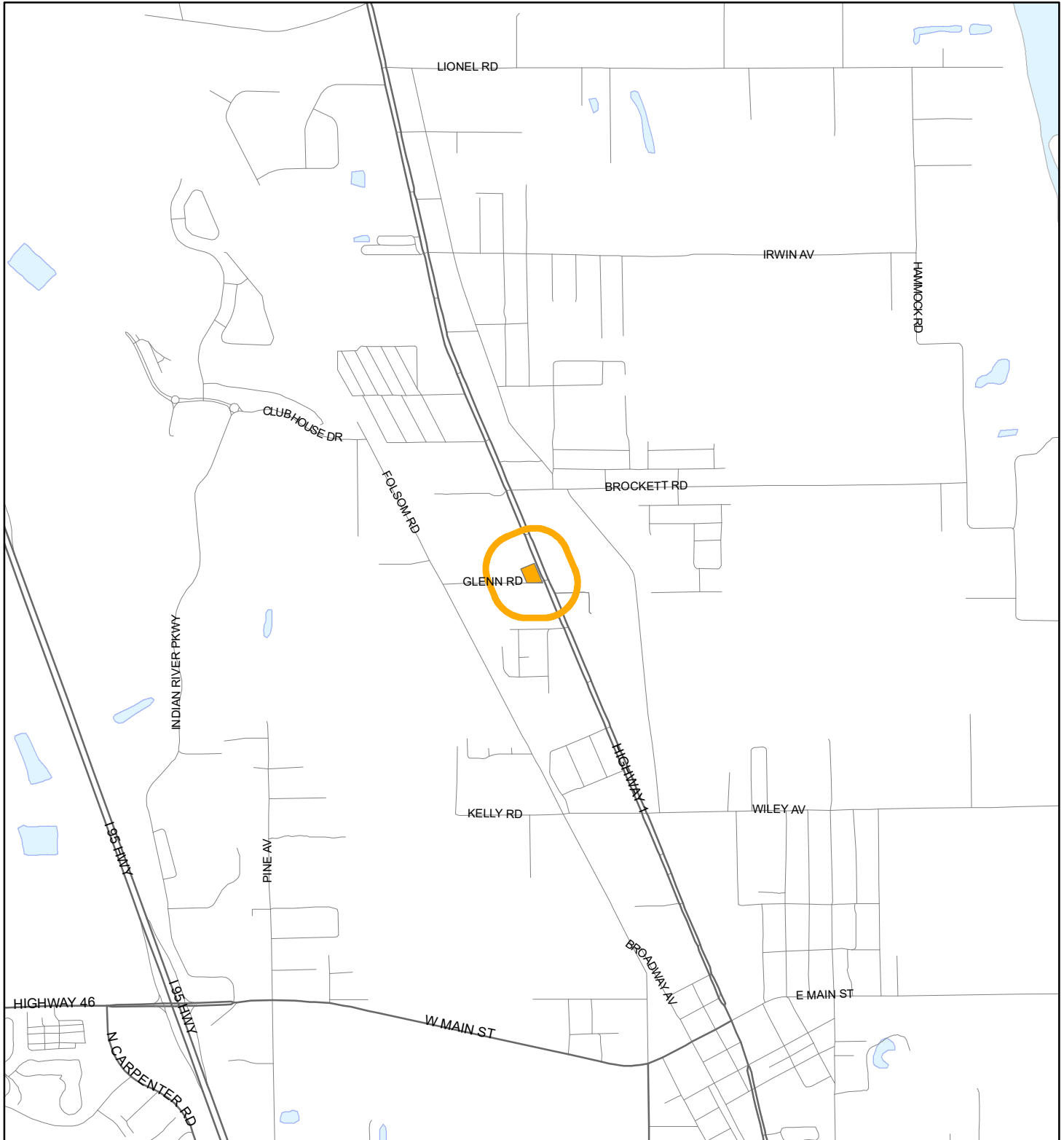


LOCATION MAP

MINNICK, SCOTT

21Z00025



1:24,000 or 1 inch = 2,000 feet

Buffer Distance: 500 feet

This map was compiled from recorded documents and does not reflect an actual survey. The Brevard County Board of County Commissioners does not assume responsibility for errors or omissions hereon.

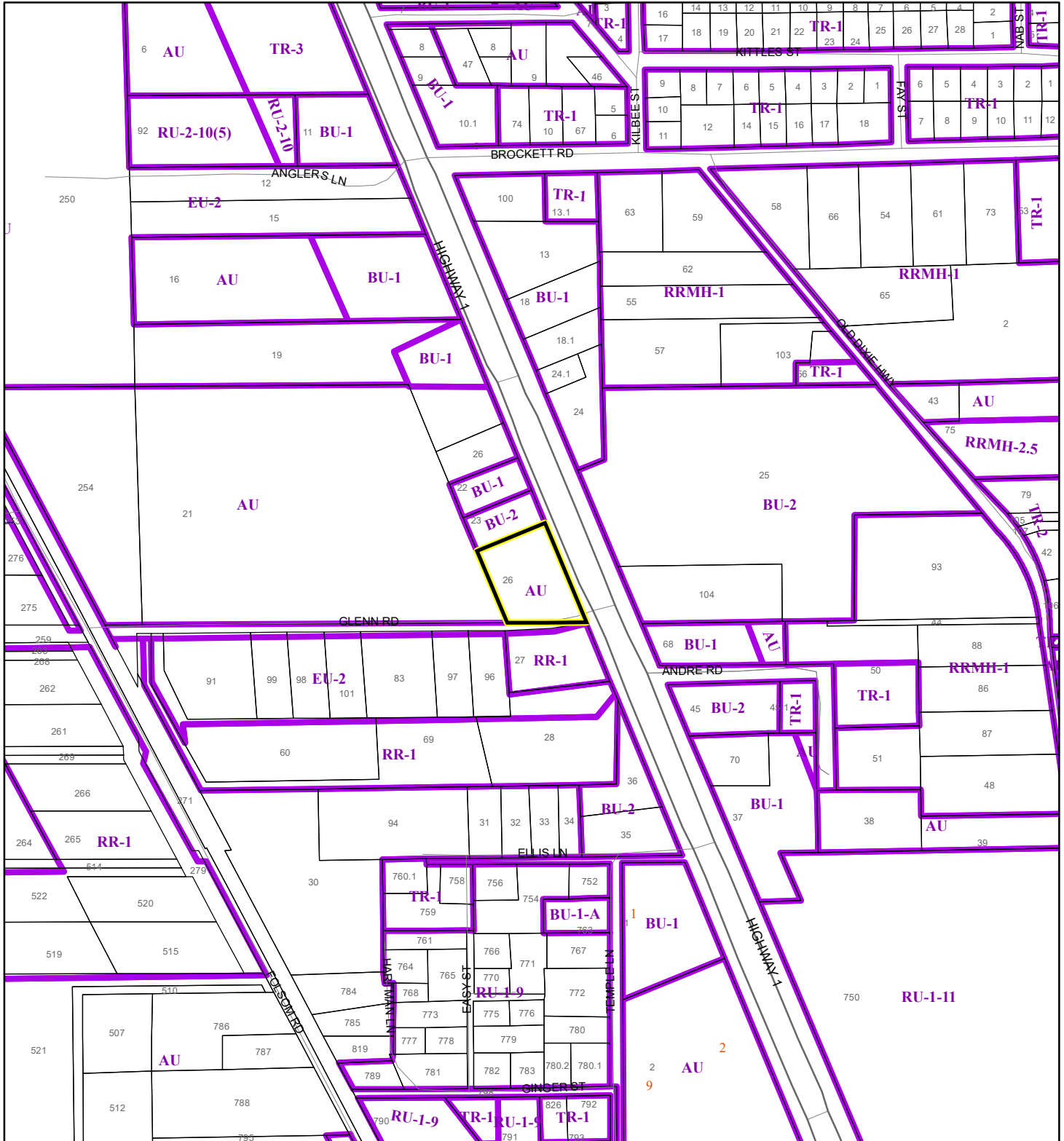
Produced by BoCC - GIS Date: 9/16/2021

Buffer
Subject Property

ZONING MAP

MINNICK, SCOTT

21Z00025



1:4,800 or 1 inch = 400 feet

This map was compiled from recorded documents and does not reflect an actual survey. The Brevard County Board of County Commissioners does not assume responsibility for errors or omissions hereon.

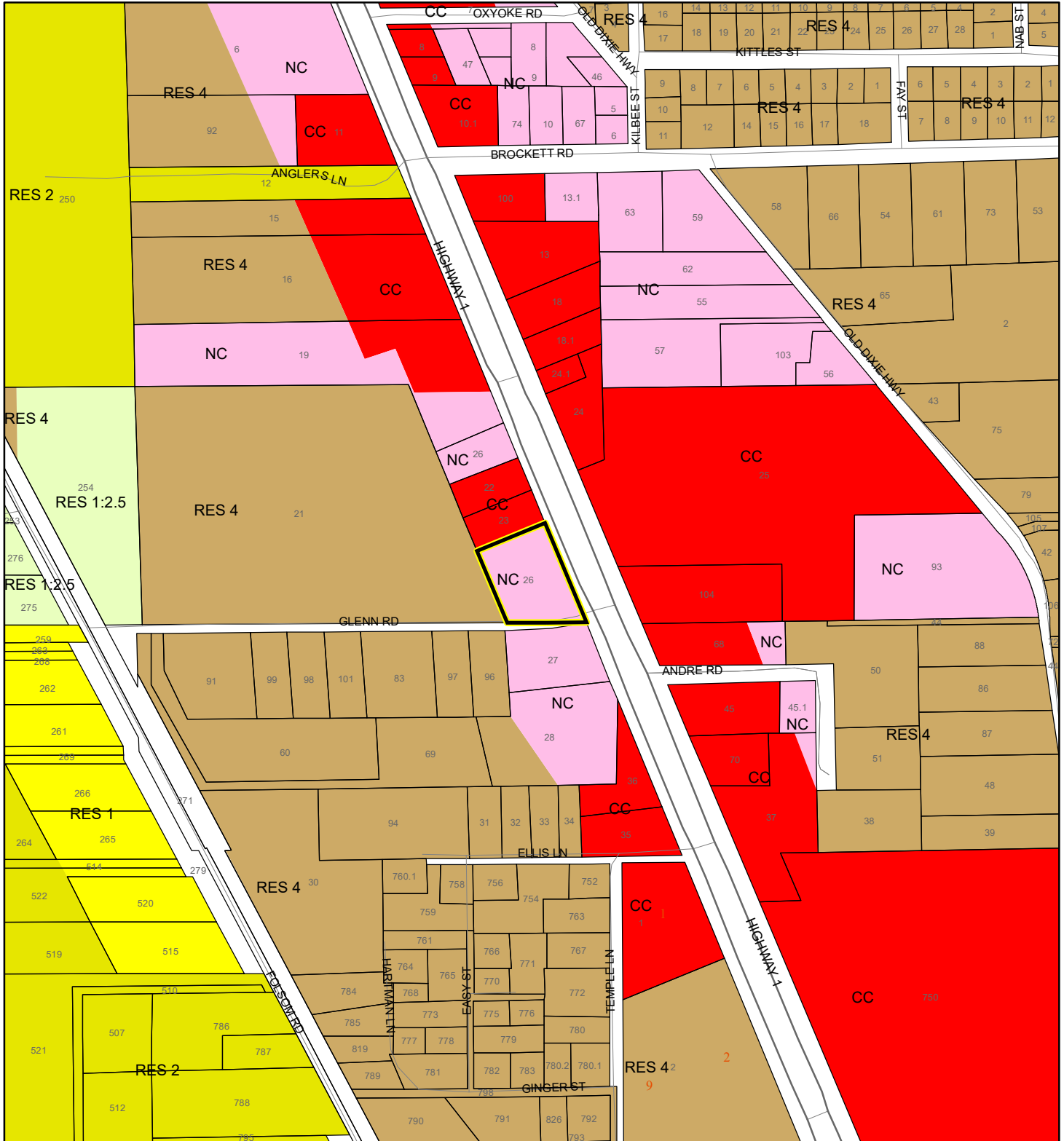
Produced by BoCC - GIS Date: 9/16/2021

- Subject Property
- Parcels
- Zoning



FUTURE LAND USE MAP

MINNICK, SCOTT

21Z00025



1:4,800 or 1 inch = 400 feet

 Subject Property
 Parcels

This map was compiled from recorded documents and does not reflect an actual survey. The Brevard County Board of County Commissioners does not assume responsibility for errors or omissions hereon.

Produced by BoCC - GIS Date: 9/16/2021

AERIAL MAP

MINNICK, SCOTT

21Z00025




1:2,400 or 1 inch = 200 feet

PHOTO YEAR: 2021

This map was compiled from recorded documents and does not reflect an actual survey. The Brevard County Board of County Commissioners does not assume responsibility for errors or omissions hereon.

Produced by BoCC - GIS Date: 9/16/2021

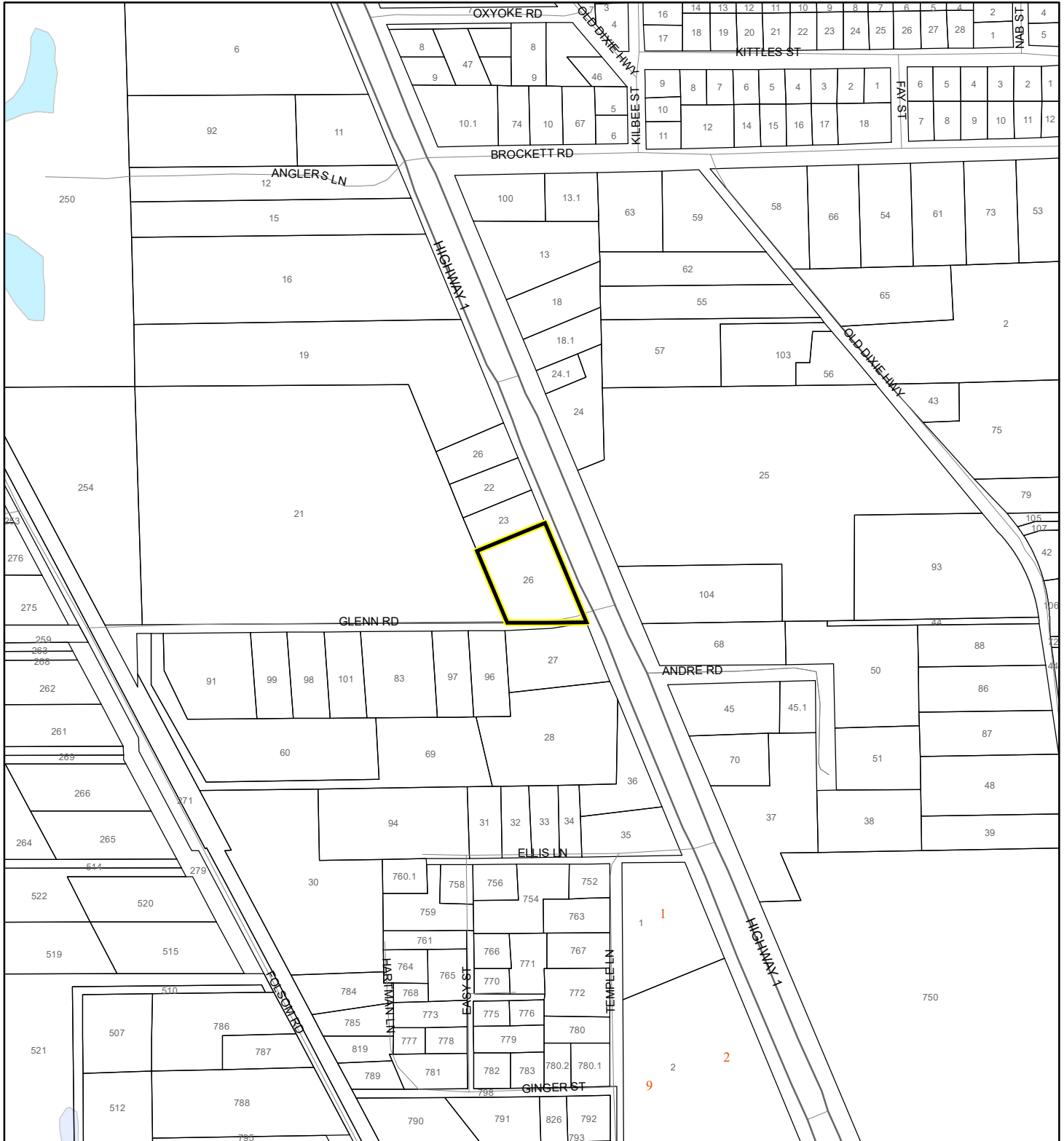
 Subject Property

 Parcels

NWI WETLANDS MAP

MINNICK, SCOTT

21Z00025













1:4,800 or 1 inch = 400 feet

This map was compiled from recorded documents and does not reflect an actual survey. The Brevard County Board of County Commissioners does not assume responsibility for errors or omissions hereon.

Produced by BoCC - GIS Date: 9/16/2021

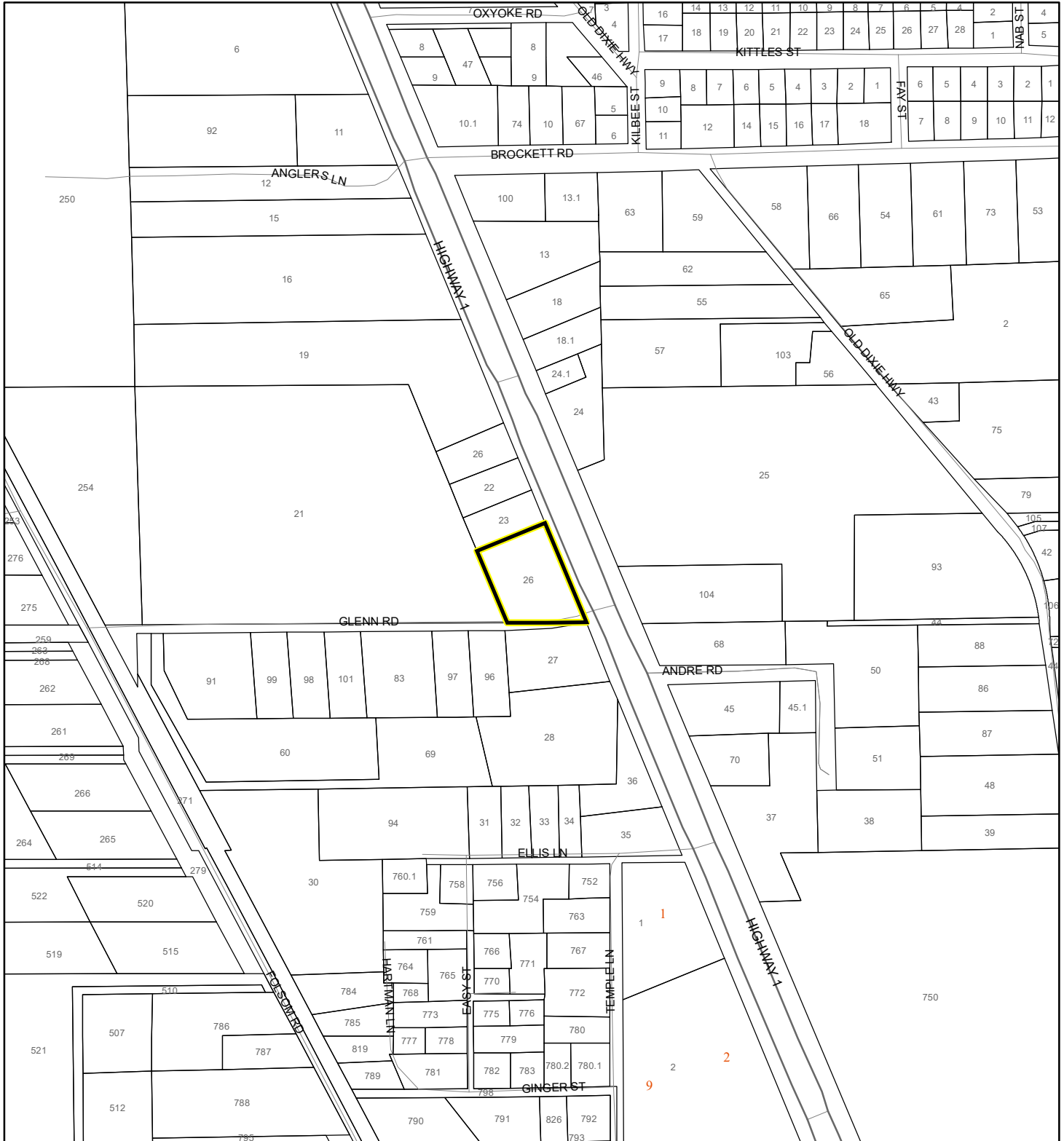
National Wetlands Inventory (NWI)

 Estuarine and Marine Deepwater	 Freshwater Pond
 Estuarine and Marine Wetland	 Lake
 Freshwater Emergent Wetland	 Other
 Freshwater Forested/Shrub Wetland	 Riverine
	 Subject Property
	 Parcels

SJRWMD FLUCCS WETLANDS - 6000 Series MAP

MINNICK, SCOTT

21Z00025



1:4,800 or 1 inch = 400 feet

This map was compiled from recorded documents and does not reflect an actual survey. The Brevard County Board of County Commissioners does not assume responsibility for errors or omissions hereon.

Produced by BoCC - GIS Date: 9/16/2021

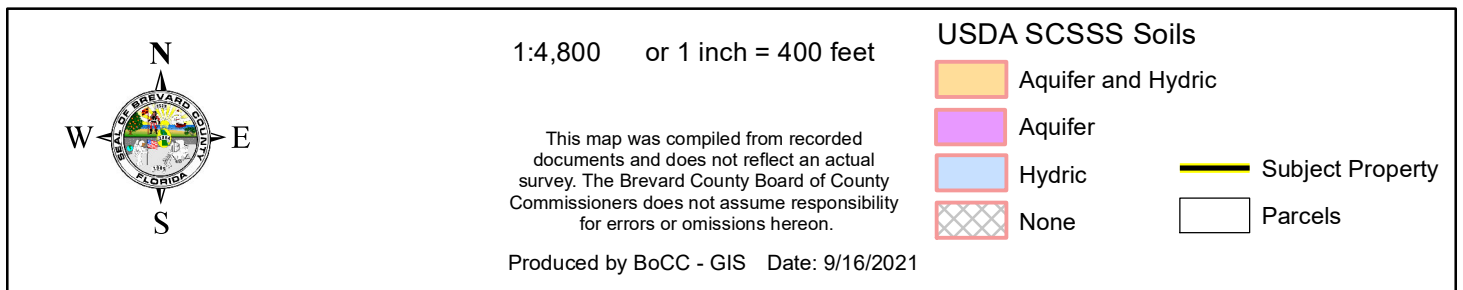
SJRWMD FLUCCS WETLANDS

- Wetland Hardwood Forests - Series 6100
- Wetland Coniferous Forest - Series 6200
- Wetland Forested Mixed - Series 6300
- Vegetated Non-Forested Wetlands - Series 6400
- Non-Vegetated Wetland - Series 6500

Subject Property

Parcels

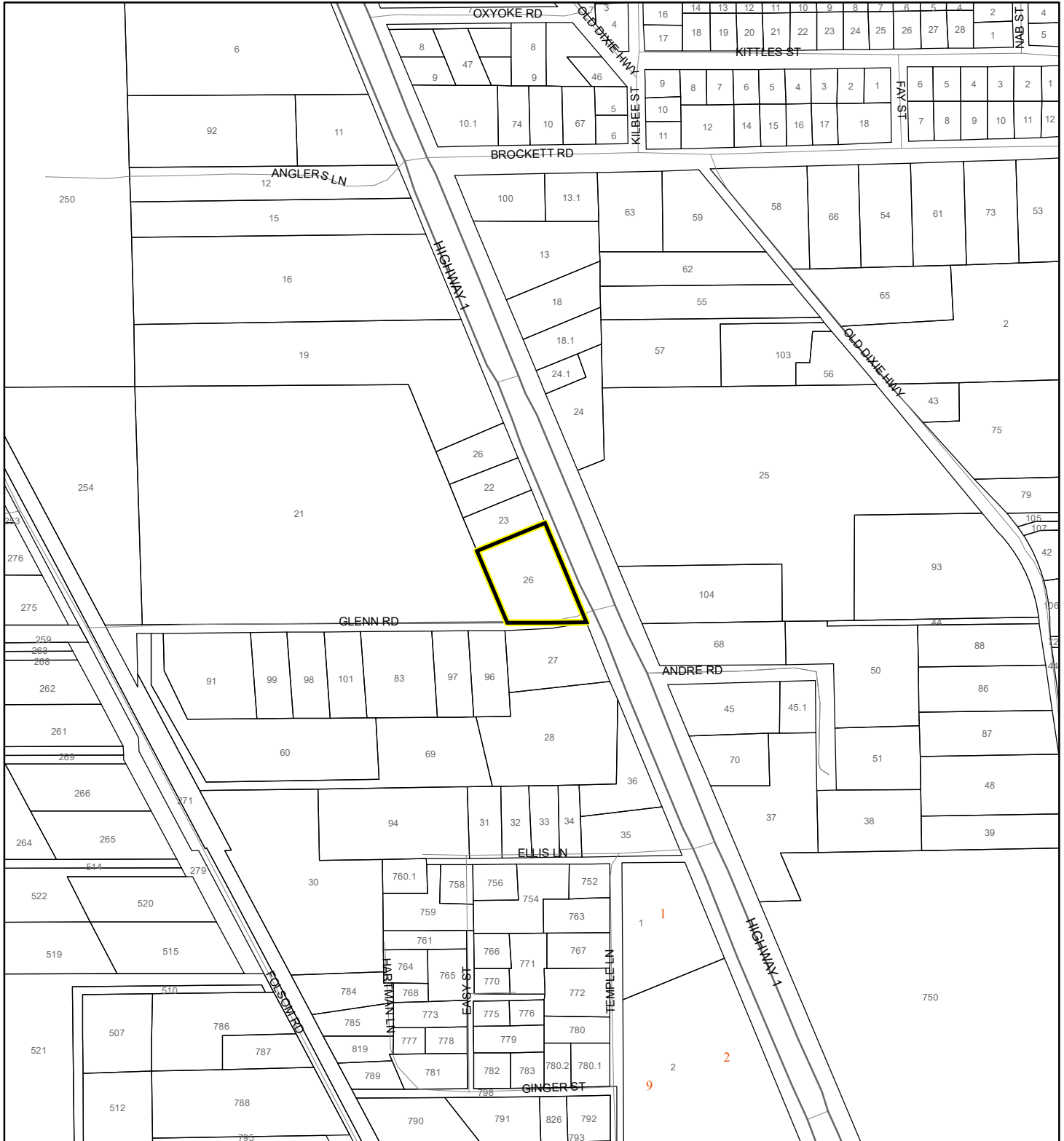
21Z00025



FEMA FLOOD ZONES MAP

MINNICK, SCOTT

21Z00025



1:4,800 or 1 inch = 400 feet

This map was compiled from recorded documents and does not reflect an actual survey. The Brevard County Board of County Commissioners does not assume responsibility for errors or omissions hereon.

Produced by BoCC - GIS Date: 9/16/2021

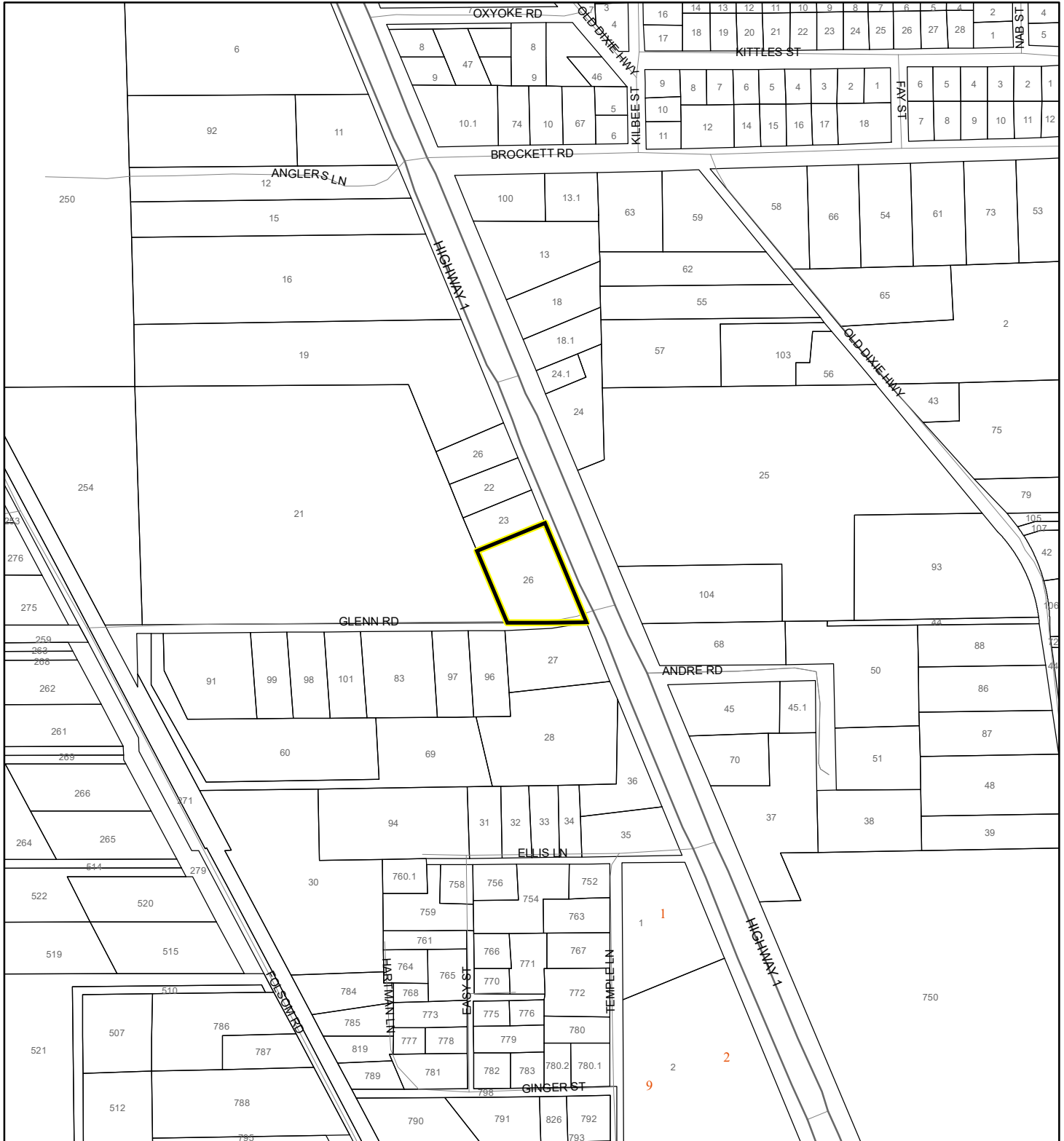
FEMA Flood Zones

- | | | |
|------------------|------------|---|
| A | AO | X |
| AE | Open Water | |
| AH | VE | |
| Subject Property | Parcels | |

COASTAL HIGH HAZARD AREA MAP

MINNICK, SCOTT

21Z00025



1:4,800 or 1 inch = 400 feet


This map was compiled from recorded documents and does not reflect an actual survey. The Brevard County Board of County Commissioners does not assume responsibility for errors or omissions hereon.

Produced by BoCC - GIS Date: 9/16/2021

 Subject Property

 Parcels

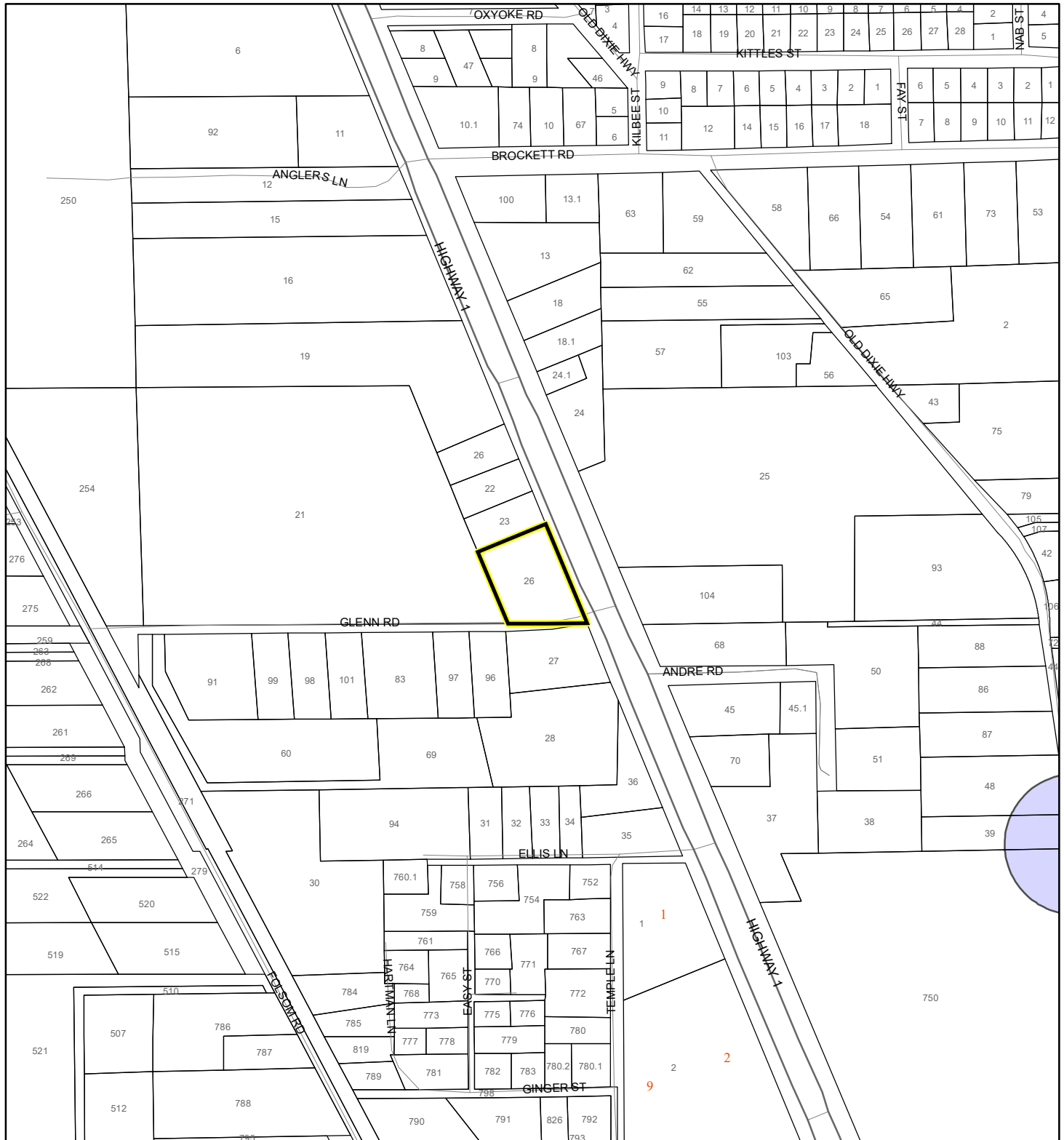
Coastal High Hazard Area

 SurgeZoneCat1

INDIAN RIVER LAGOON SEPTIC OVERLAY MAP

MINNICK, SCOTT

21Z00025



1:4,800 or 1 inch = 400 feet

This map was compiled from recorded documents and does not reflect an actual survey. The Brevard County Board of County Commissioners does not assume responsibility for errors or omissions hereon.

Produced by BoCC - GIS Date: 9/16/2021

 Subject Property

 Parcels

Septic Overlay

 40 Meters

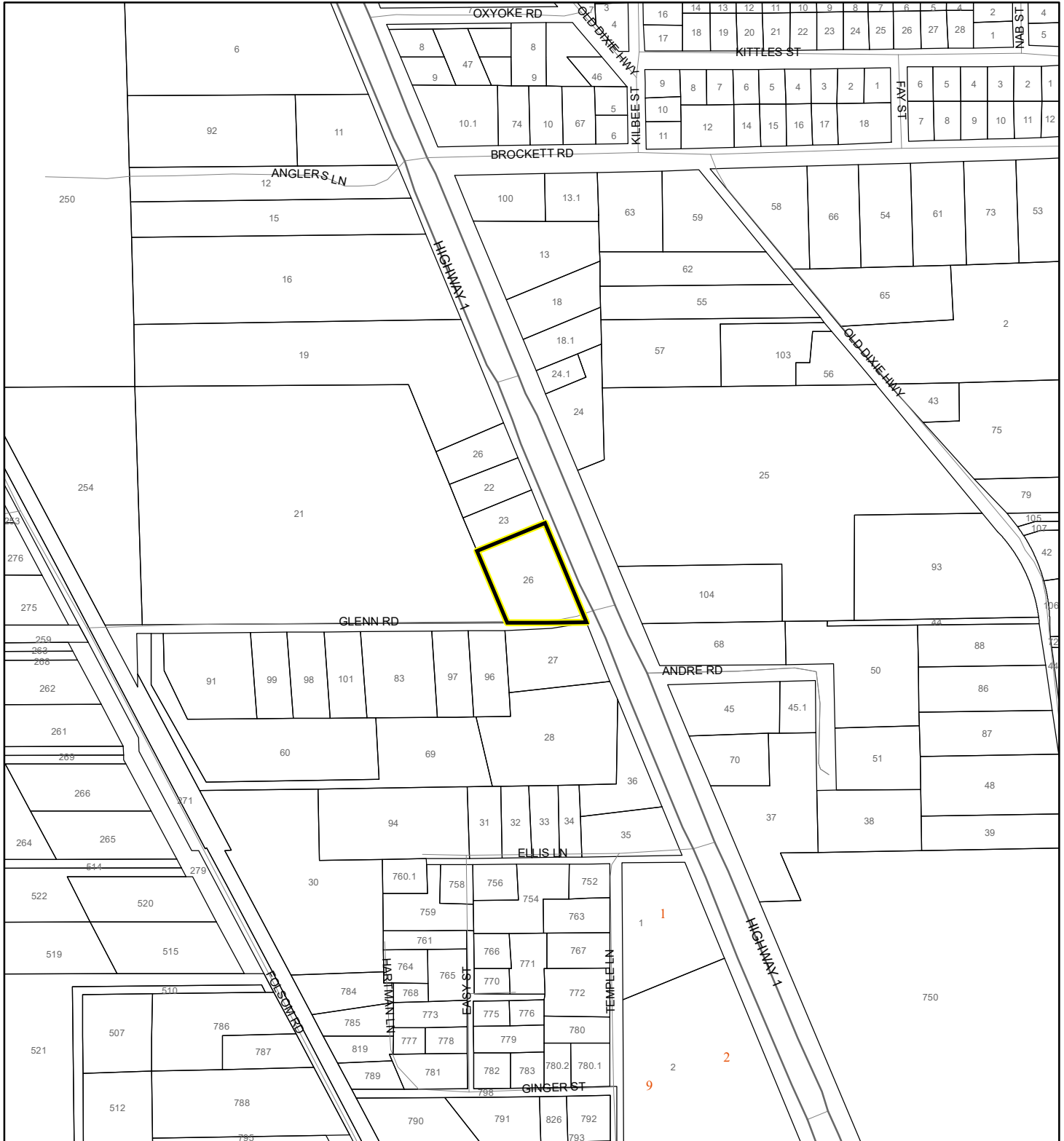
 60 Meters

 All Distances

EAGLE NESTS MAP

MINNICK, SCOTT

21Z00025




1:4,800 or 1 inch = 400 feet

This map was compiled from recorded documents and does not reflect an actual survey. The Brevard County Board of County Commissioners does not assume responsibility for errors or omissions hereon.

Produced by BoCC - GIS Date: 9/16/2021

 Subject Property

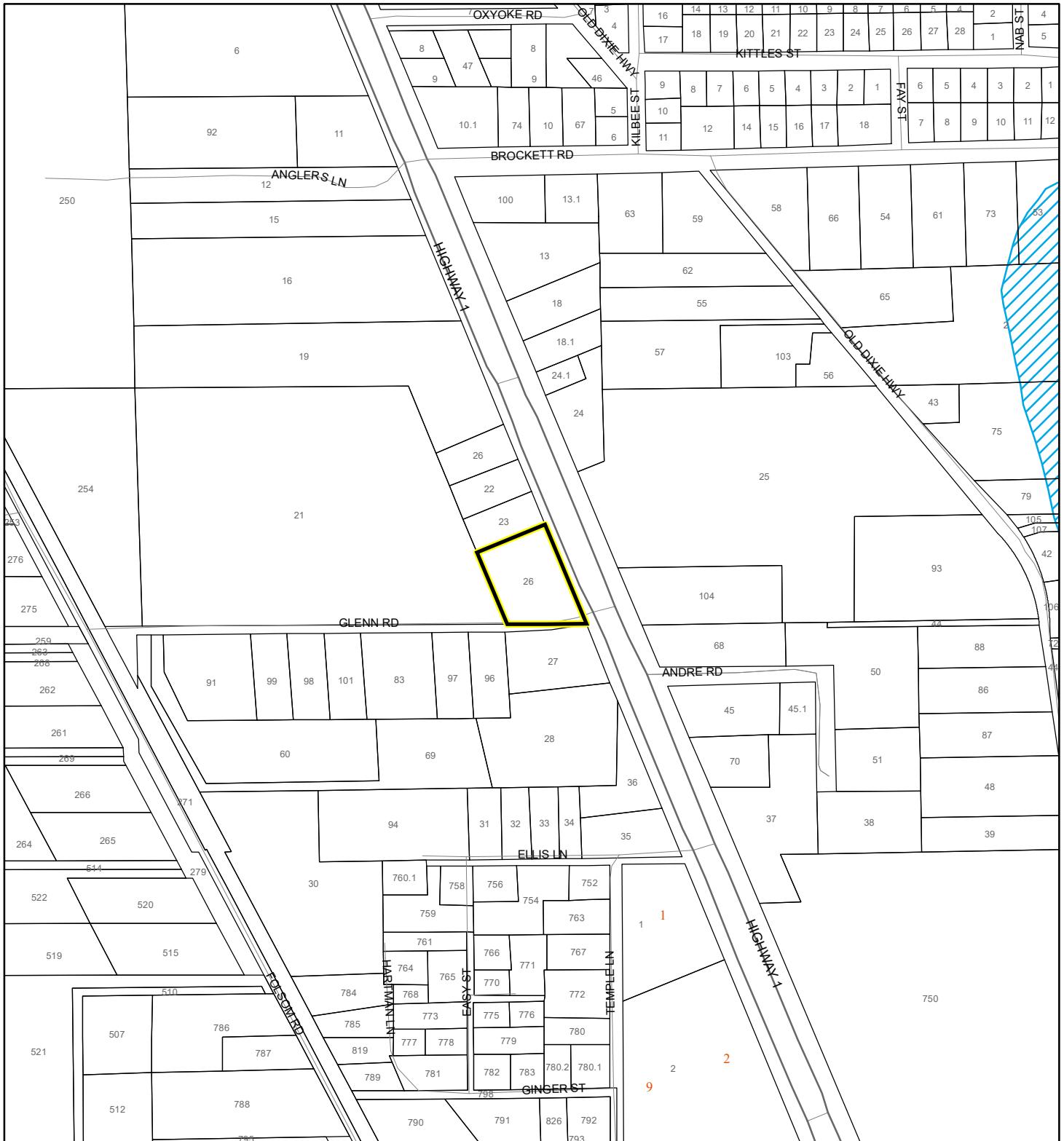
 Parcels

 Eagle Nests
FWS 2010

SCRUB JAY OCCUPANCY MAP

MINNICK, SCOTT


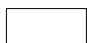

21Z00025



1:4,800 or 1 inch = 400 feet

This map was compiled from recorded documents and does not reflect an actual survey. The Brevard County Board of County Commissioners does not assume responsibility for errors or omissions hereon.

Produced by BoCC - GIS Date: 9/16/2021

-  Subject Property
-  Parcels
-  Scrub Jay Occupancy

SJRWMD FLUCCS UPLAND FORESTS - 4000 Series MAP

MINNICK, SCOTT

21Z00025



1:4,800 or 1 inch = 400 feet

This map was compiled from recorded documents and does not reflect an actual survey. The Brevard County Board of County Commissioners does not assume responsibility for errors or omissions hereon.

Produced by BoCC - GIS Date: 9/16/2021

SJRWMD FLUCCS Upland Forests

- Upland Coniferous Forest - 4100 Series
- Upland Hardwood Forest - 4200 Series
- Upland Mixed Forest - 4300 Series
- Tree Plantations - 4400 Series

Subject Property

Parcels