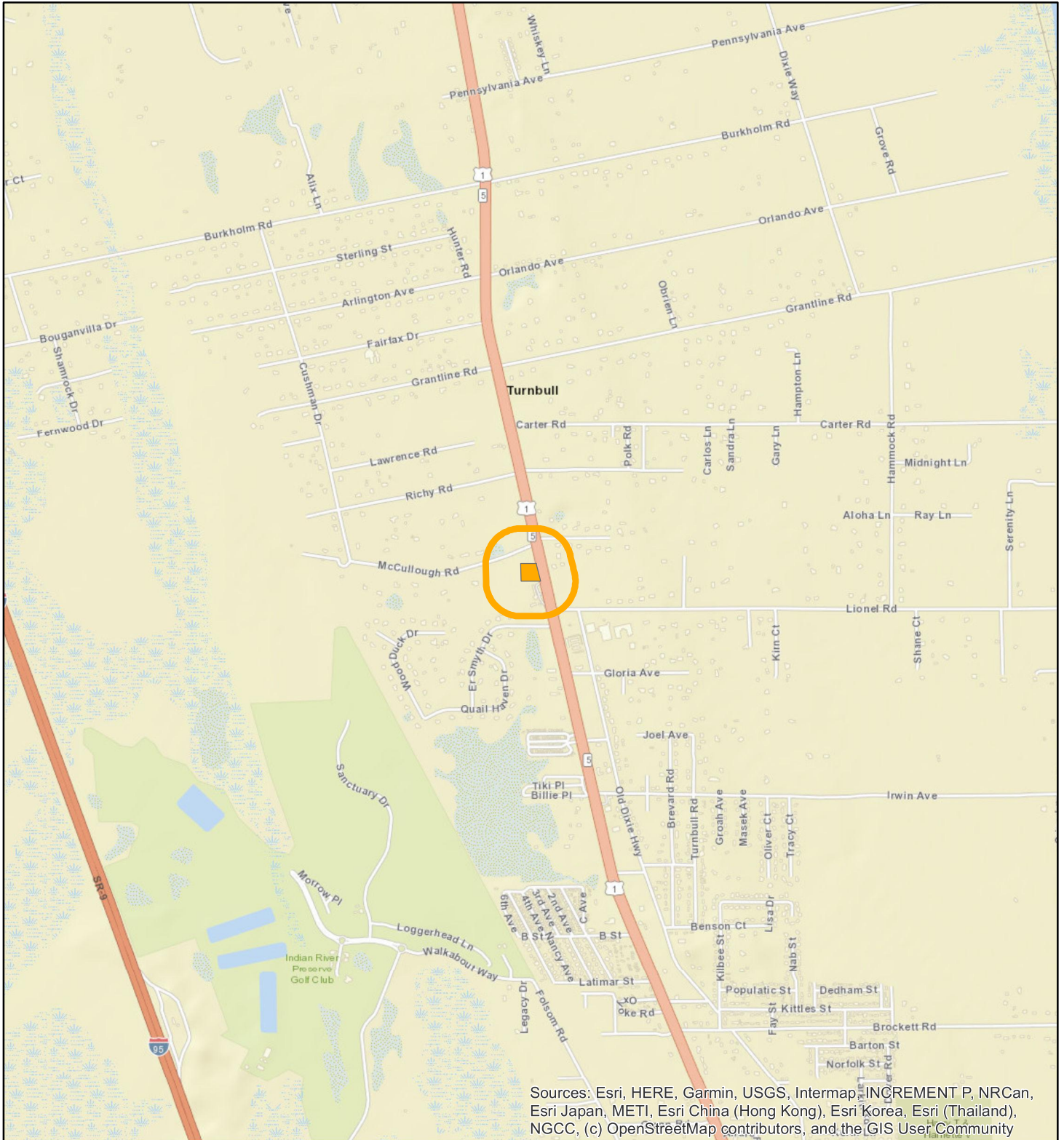
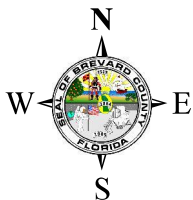


LOCATION MAP

Donald & Stacy Clark
26Z00021



Sources: Esri, HERE, Garmin, USGS, Intermap, INCREMENT P, NRCan, Esri Japan, METI, Esri China (Hong Kong), Esri Korea, Esri (Thailand), NGCC, (c) OpenStreetMap contributors, and the GIS User Community





1:24,000 or 1 inch = 2,000 feet

Buffer Distance: 500 feet

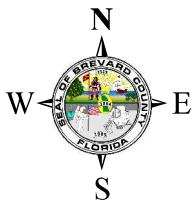
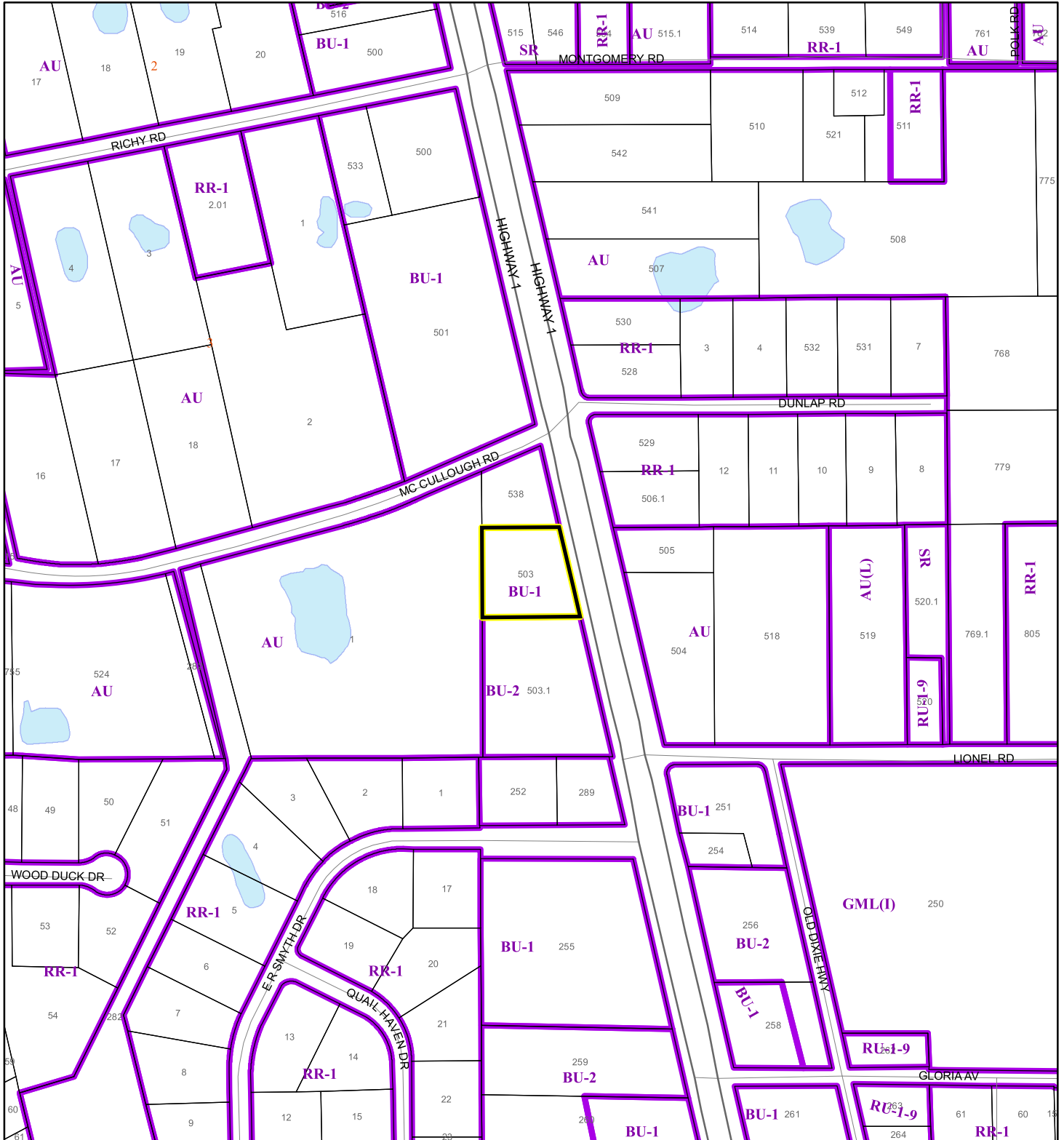
This map was compiled from recorded documents and does not reflect an actual survey. The Brevard County Board of County Commissioners does not assume responsibility for errors or omissions hereon.

Produced by BoCC - GIS Date: 4/23/2026

-  Buffer
-  Subject Property

ZONING MAP

Donald & Stacy Clark
26Z00021



1:4,800 or 1 inch = 400 feet

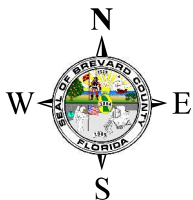
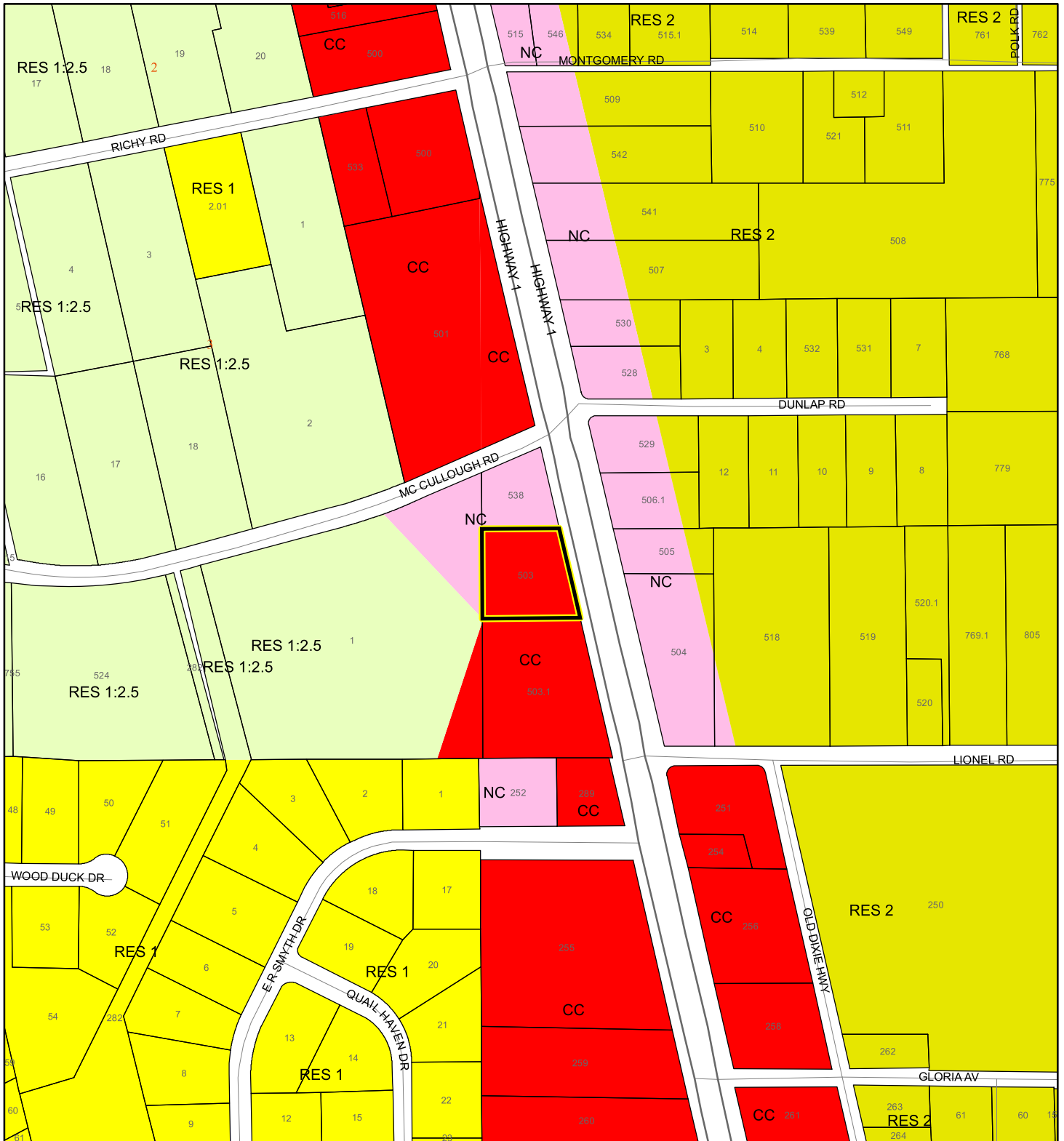
This map was compiled from recorded documents and does not reflect an actual survey. The Brevard County Board of County Commissioners does not assume responsibility for errors or omissions hereon.

Produced by BoCC - GIS Date: 4/23/2026

- Subject Property
- Parcels
- Zoning

FUTURE LAND USE MAP

Donald & Stacy Clark
26Z00021



1:4,800 or 1 inch = 400 feet

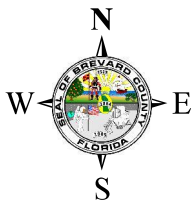
- Subject Property
- Parcels

This map was compiled from recorded documents and does not reflect an actual survey. The Brevard County Board of County Commissioners does not assume responsibility for errors or omissions hereon.

Produced by BoCC - GIS Date: 4/23/2026

AERIAL MAP

Donald & Stacy Clark
26Z00021




1:2,400 or 1 inch = 200 feet

PHOTO YEAR: 2026

This map was compiled from recorded documents and does not reflect an actual survey. The Brevard County Board of County Commissioners does not assume responsibility for errors or omissions hereon.

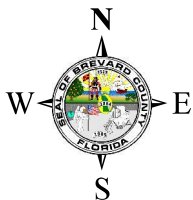
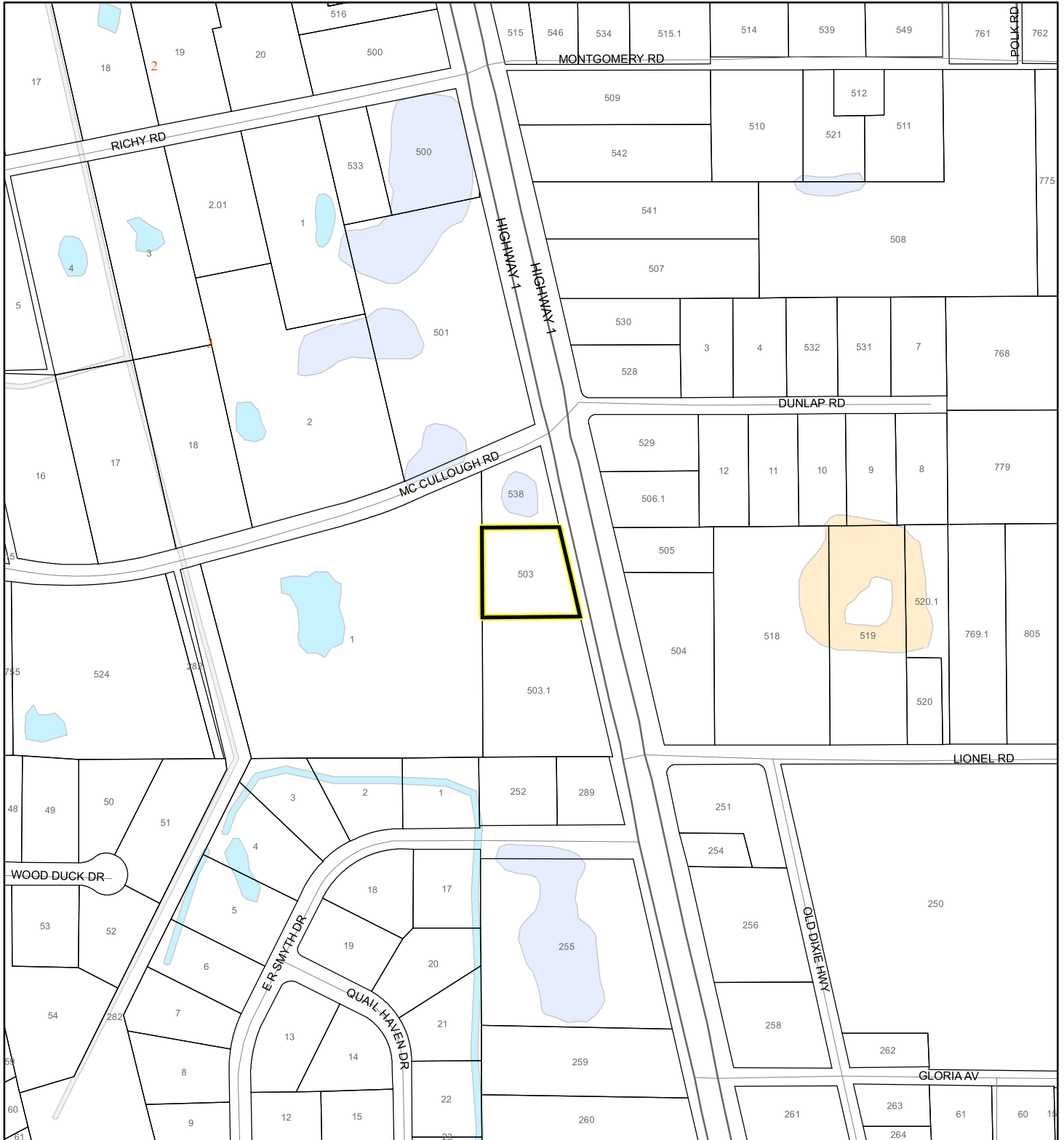
Produced by BoCC - GIS Date: 4/23/2026

 Subject Property

 Parcels

NWI WETLANDS MAP

Donald & Stacy Clark
26Z00021






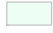

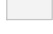

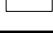


1:4,800 or 1 inch = 400 feet

This map was compiled from recorded documents and does not reflect an actual survey. The Brevard County Board of County Commissioners does not assume responsibility for errors or omissions hereon.

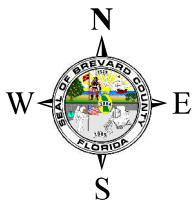
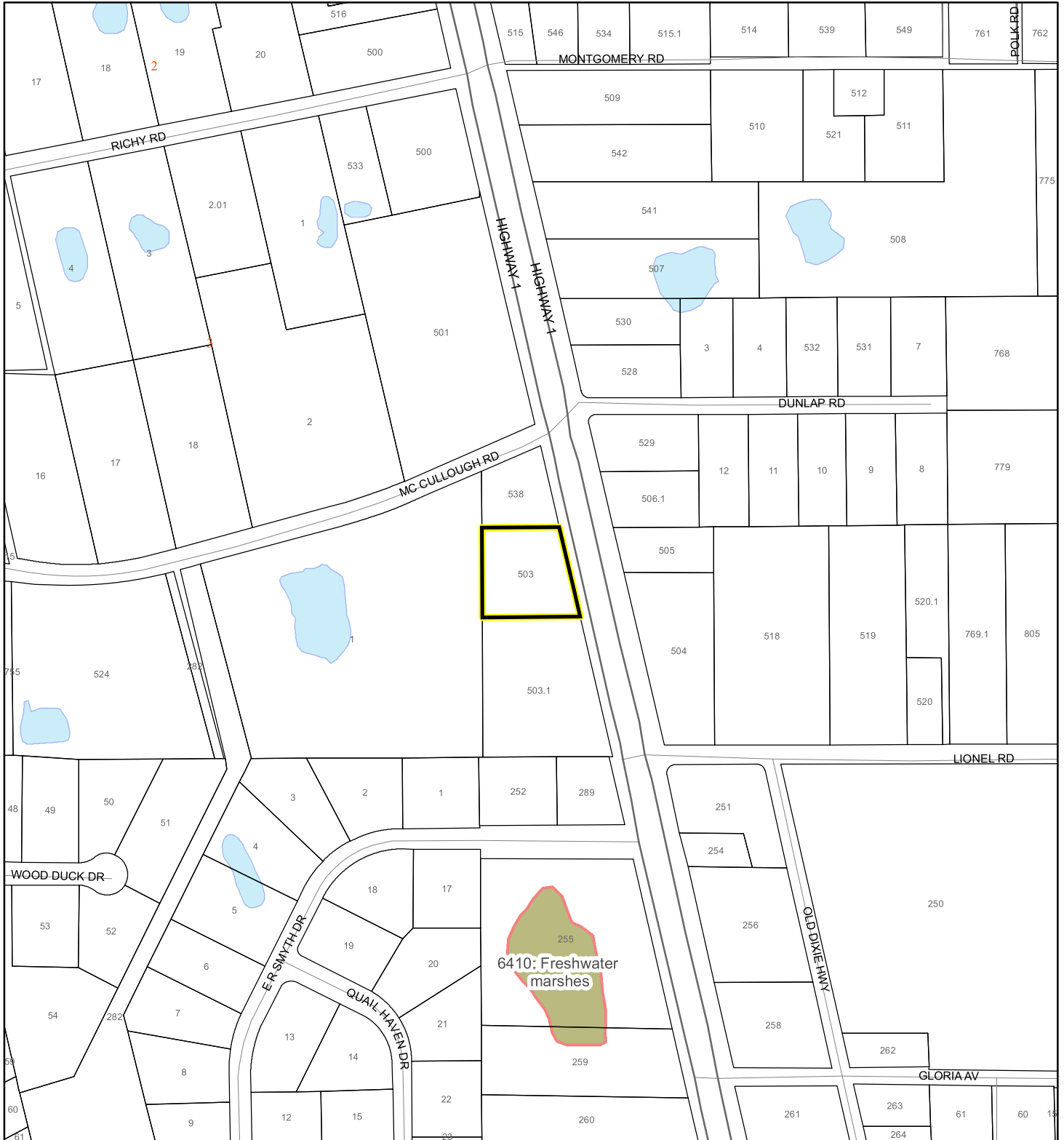
Produced by BoCC - GIS Date: 4/23/2026

National Wetlands Inventory (NWI)

- | | |
|--|--|
|  Estuarine and Marine Deepwater |  Freshwater Pond |
|  Estuarine and Marine Wetland |  Lake |
|  Freshwater Emergent Wetland |  Other |
|  Freshwater Forested/Shrub Wetland |  Riverine |
| |  Subject Property |
| |  Parcels |

SJRWMD FLUCCS WETLANDS - 6000 Series MAP

Donald & Stacy Clark
26Z00021



1:4,800 or 1 inch = 400 feet

This map was compiled from recorded documents and does not reflect an actual survey. The Brevard County Board of County Commissioners does not assume responsibility for errors or omissions hereon.

Produced by BoCC - GIS Date: 4/23/2026

SJRWMD FLUCCS WETLANDS

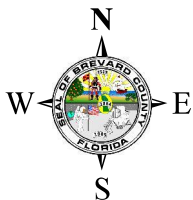
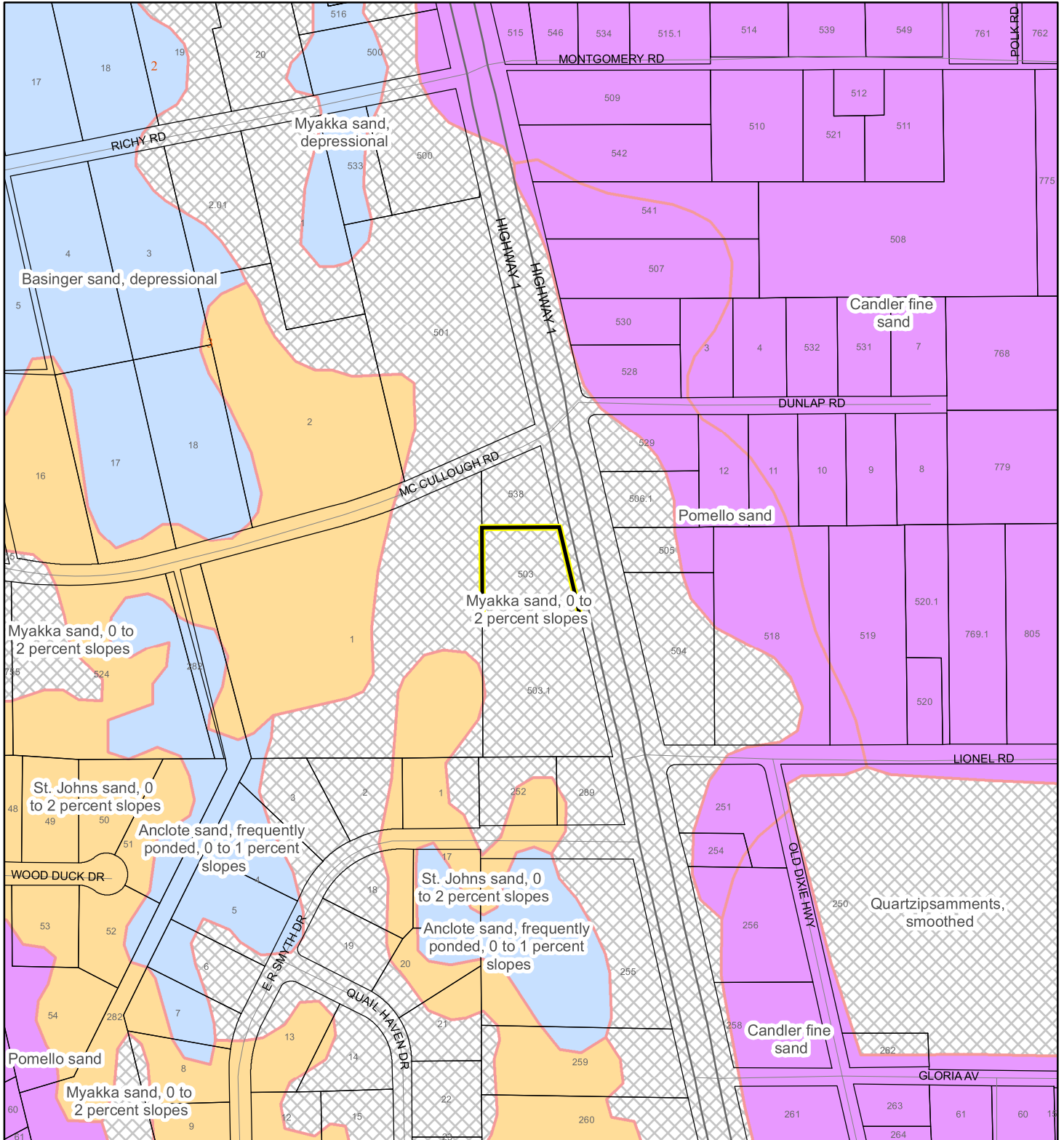
- Wetland Hardwood Forests - Series 6100
- Wetland Coniferous Forest - Series 6200
- Wetland Forested Mixed - Series 6300
- Vegetated Non-Forested Wetlands - Series 6400
- Non-Vegetated Wetland - Series 6500

Subject Property

Parcels

USDA SCSSS SOILS MAP

Donald & Stacy Clark
26Z00021



1:4,800 or 1 inch = 400 feet

This map was compiled from recorded documents and does not reflect an actual survey. The Brevard County Board of County Commissioners does not assume responsibility for errors or omissions hereon.

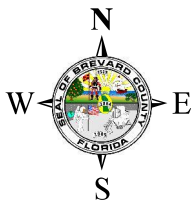
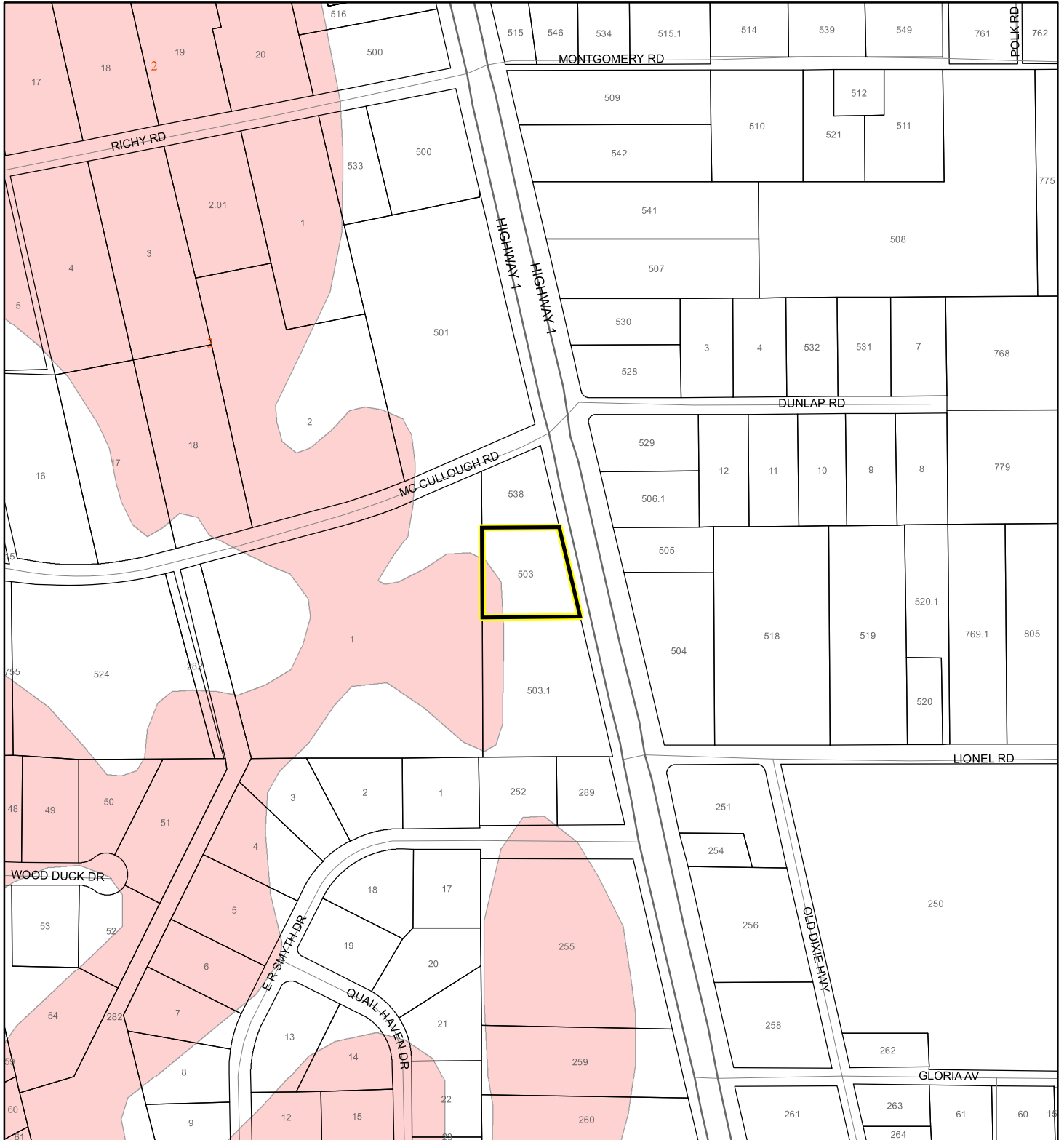
Produced by BoCC - GIS Date: 4/23/2026

USDA SCSSS Soils

- Aquifer and Hydric
- Aquifer
- Hydric
- None
- Subject Property
- Parcels

FEMA FLOOD ZONES MAP

Donald & Stacy Clark
26Z00021



1:4,800 or 1 inch = 400 feet

This map was compiled from recorded documents and does not reflect an actual survey. The Brevard County Board of County Commissioners does not assume responsibility for errors or omissions hereon.

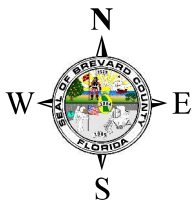
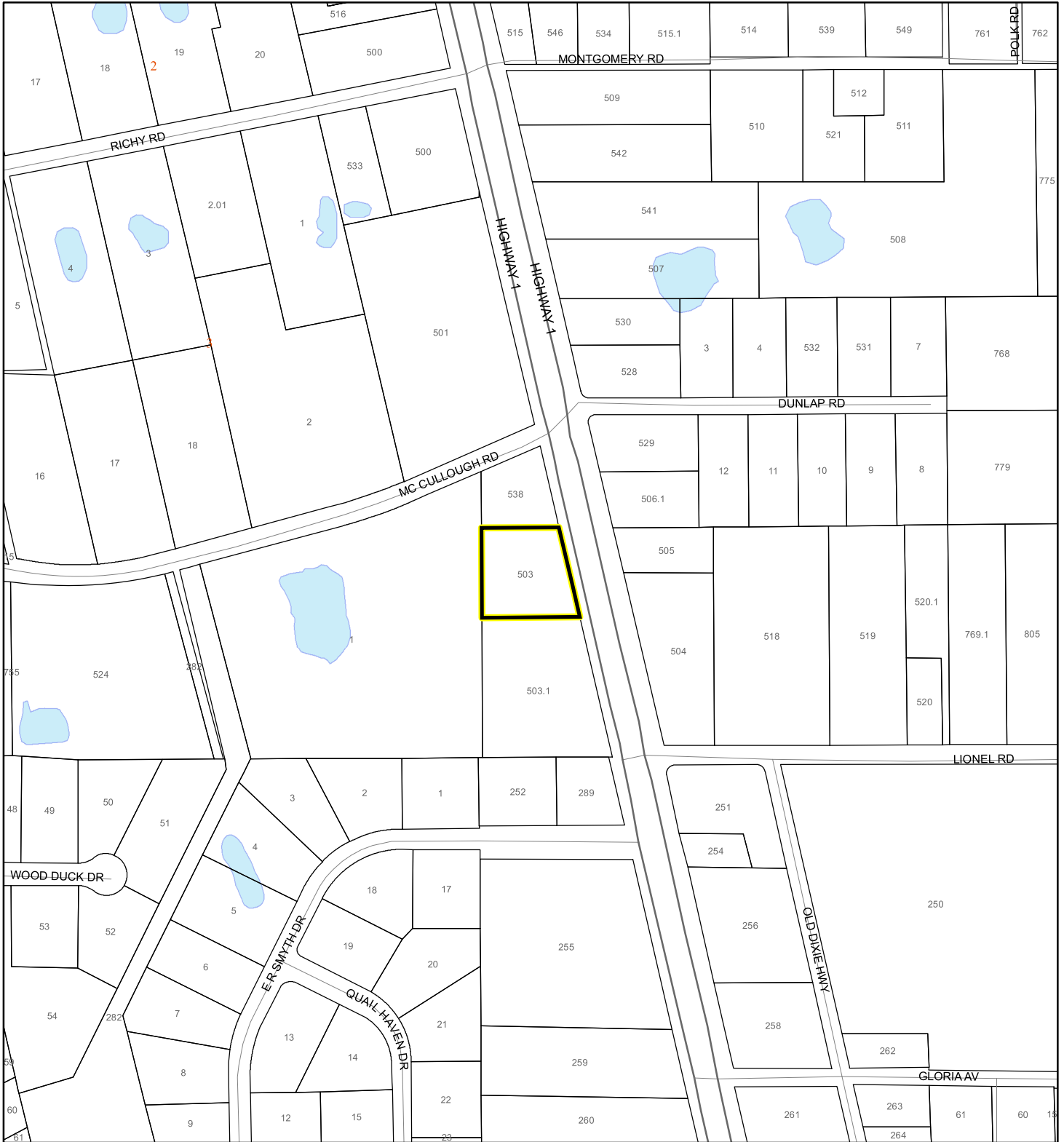
Produced by BoCC - GIS Date: 4/23/2026

FEMA Flood Zones

- | | | |
|--|--|---|
|  A |  AO |  X |
|  AE |  Open Water | |
|  AH |  VE | |
|  Subject Property |  Parcels | |

COASTAL HIGH HAZARD AREA MAP

Donald & Stacy Clark
26Z00021



1:4,800 or 1 inch = 400 feet

This map was compiled from recorded documents and does not reflect an actual survey. The Brevard County Board of County Commissioners does not assume responsibility for errors or omissions hereon.

Produced by BoCC - GIS Date: 4/23/2026

 Subject Property

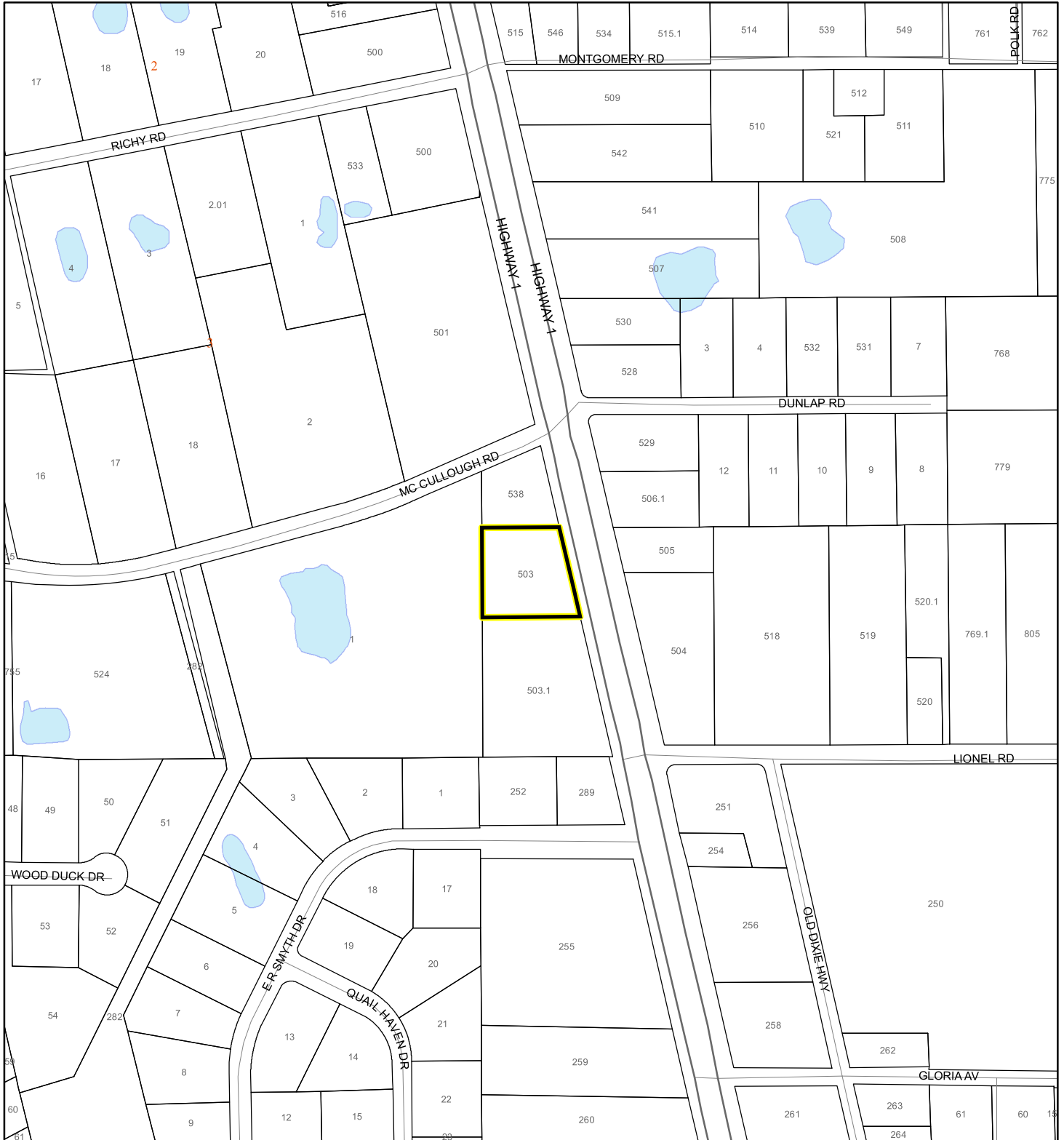
 Parcels

Coastal High Hazard Area

 SurgeZoneCat1

INDIAN RIVER LAGOON SEPTIC OVERLAY MAP

Donald & Stacy Clark
26Z00021



N
W E
S

1:4,800 or 1 inch = 400 feet

Subject Property

Parcels

Septic Overlay

40 Meters

60 Meters

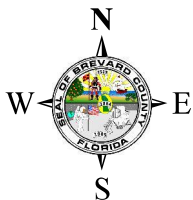
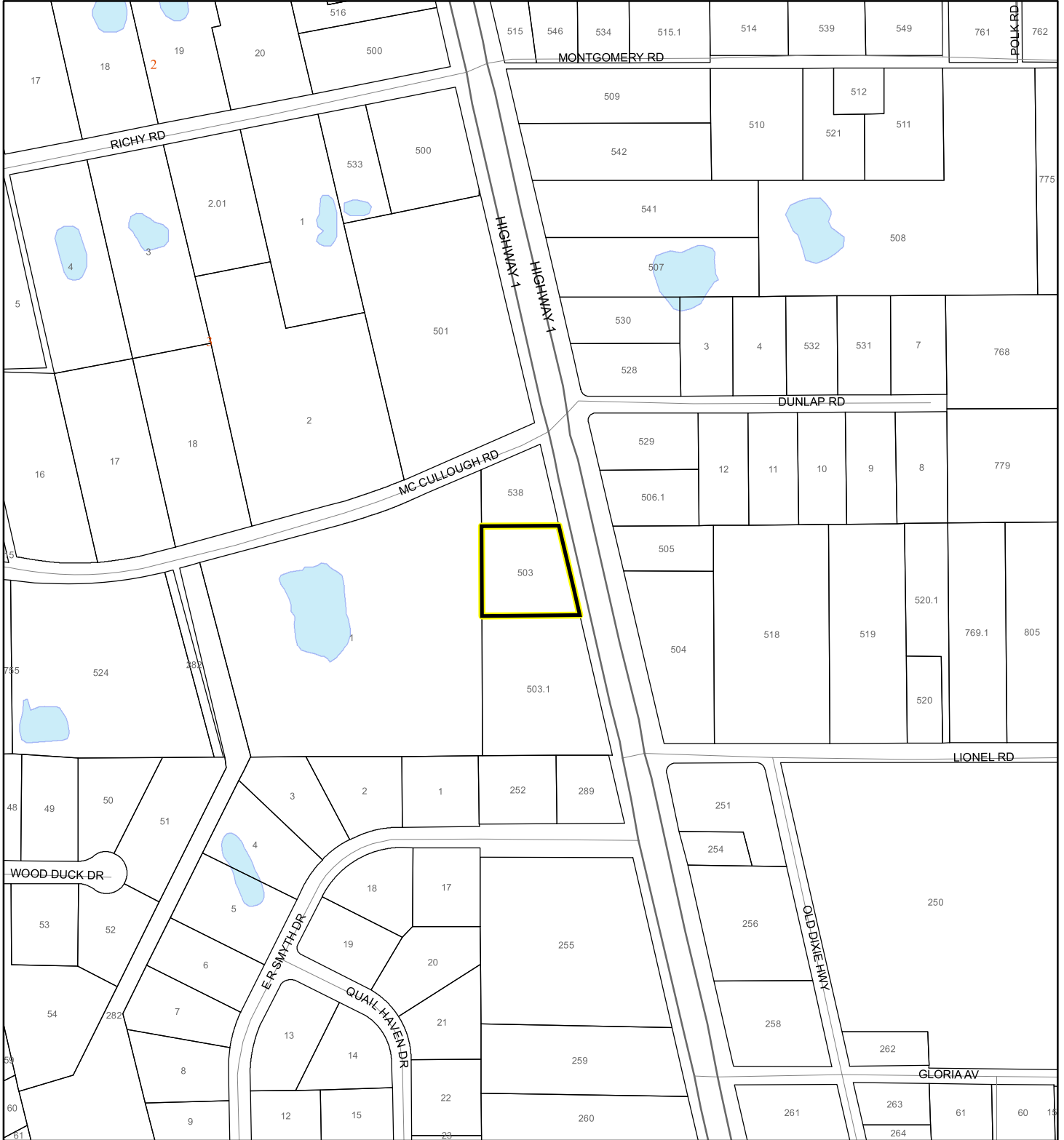
All Distances

This map was compiled from recorded documents and does not reflect an actual survey. The Brevard County Board of County Commissioners does not assume responsibility for errors or omissions hereon.

Produced by BoCC - GIS Date: 4/23/2026

EAGLE NESTS MAP

Donald & Stacy Clark
26Z00021



1:4,800 or 1 inch = 400 feet

This map was compiled from recorded documents and does not reflect an actual survey. The Brevard County Board of County Commissioners does not assume responsibility for errors or omissions hereon.

Produced by BoCC - GIS Date: 4/23/2026

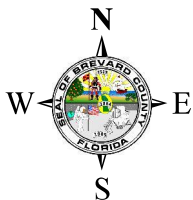
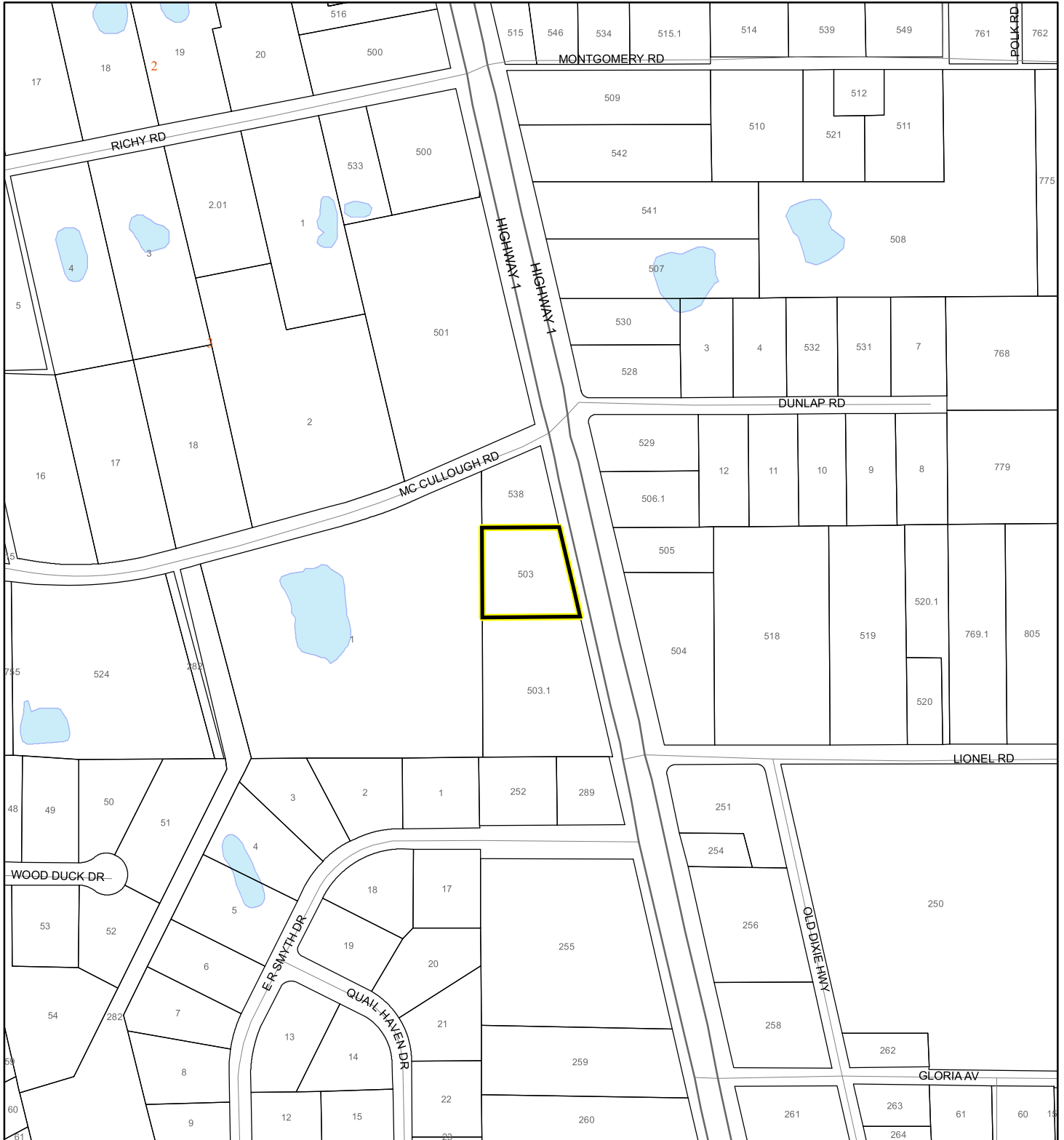
 Subject Property

 Parcels

 Eagle Nests
FWS

SCRUB JAY OCCUPANCY MAP




Donald & Stacy Clark
26Z00021



1:4,800 or 1 inch = 400 feet

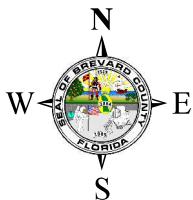
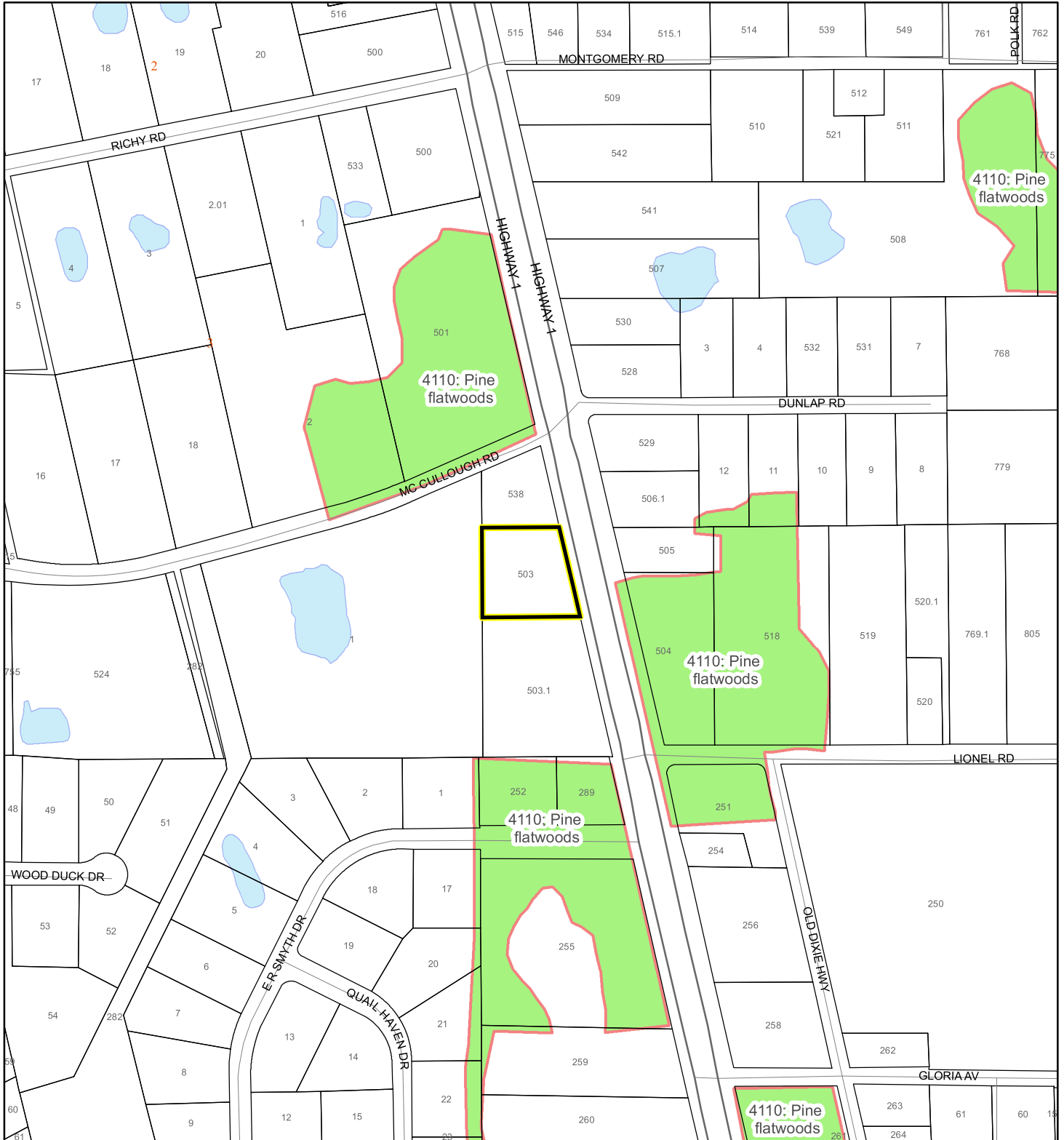
This map was compiled from recorded documents and does not reflect an actual survey. The Brevard County Board of County Commissioners does not assume responsibility for errors or omissions hereon.

Produced by BoCC - GIS Date: 4/23/2026

-  Subject Property
-  Parcels
-  Scrub Jay Occupancy

SJRWMD FLUCCS UPLAND FORESTS - 4000 Series MAP

Donald & Stacy Clark
26Z00021



1:4,800 or 1 inch = 400 feet

This map was compiled from recorded documents and does not reflect an actual survey. The Brevard County Board of County Commissioners does not assume responsibility for errors or omissions hereon.

Produced by BoCC - GIS Date: 4/23/2026

SJRWMD FLUCCS Upland Forests

- Upland Coniferous Forest - 4100 Series
- Upland Hardwood Forest - 4200 Series
- Upland Mixed Forest - 4300 Series
- Tree Plantations - 4400 Series

Subject Property

Parcels