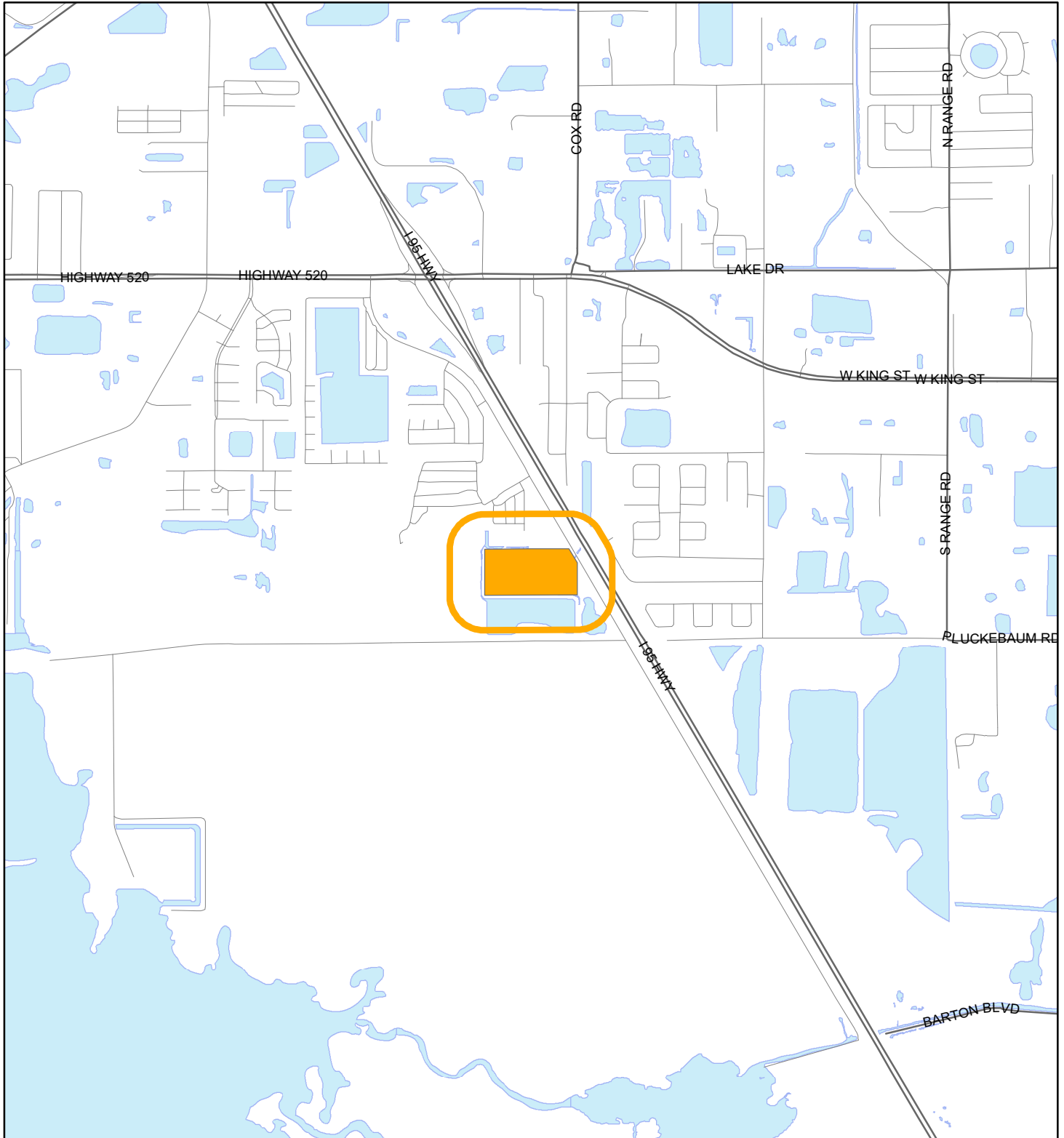


# LOCATION MAP

TG RENTALS OF BREVARD LLC

25Z00016





1:24,000 or 1 inch = 2,000 feet

Buffer Distance: 500 feet

This map was compiled from recorded documents and does not reflect an actual survey. The Brevard County Board of County Commissioners does not assume responsibility for errors or omissions hereon.

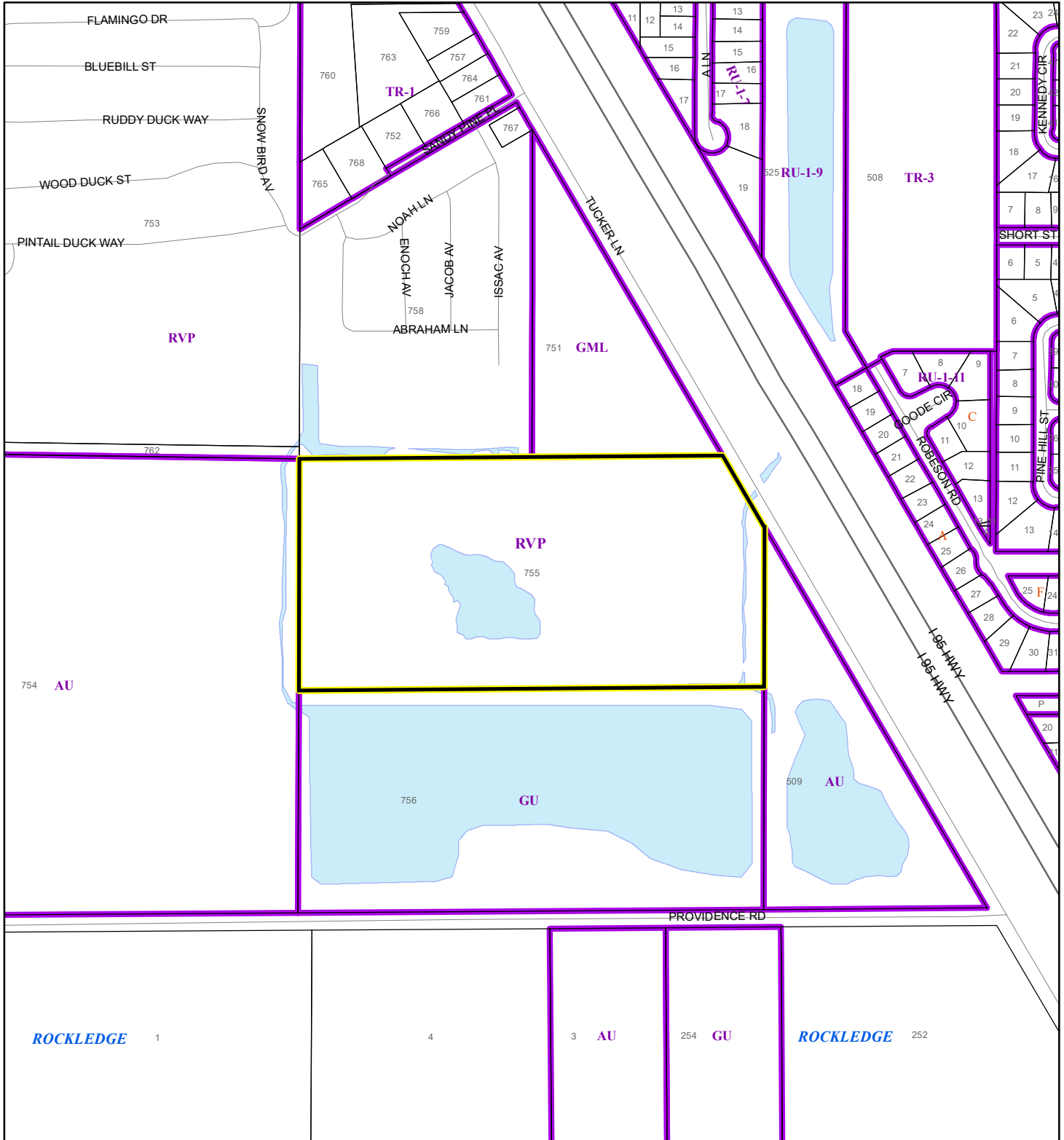
Produced by BoCC - GIS Date: 4/23/2025

 Buffer  
 Subject Property

# ZONING MAP

TG RENTALS OF BREVARD LLC

25Z00016



1:4,800 or 1 inch = 400 feet

This map was compiled from recorded documents and does not reflect an actual survey. The Brevard County Board of County Commissioners does not assume responsibility for errors or omissions hereon.

Produced by BoCC - GIS Date: 4/23/2025

       Subject Property

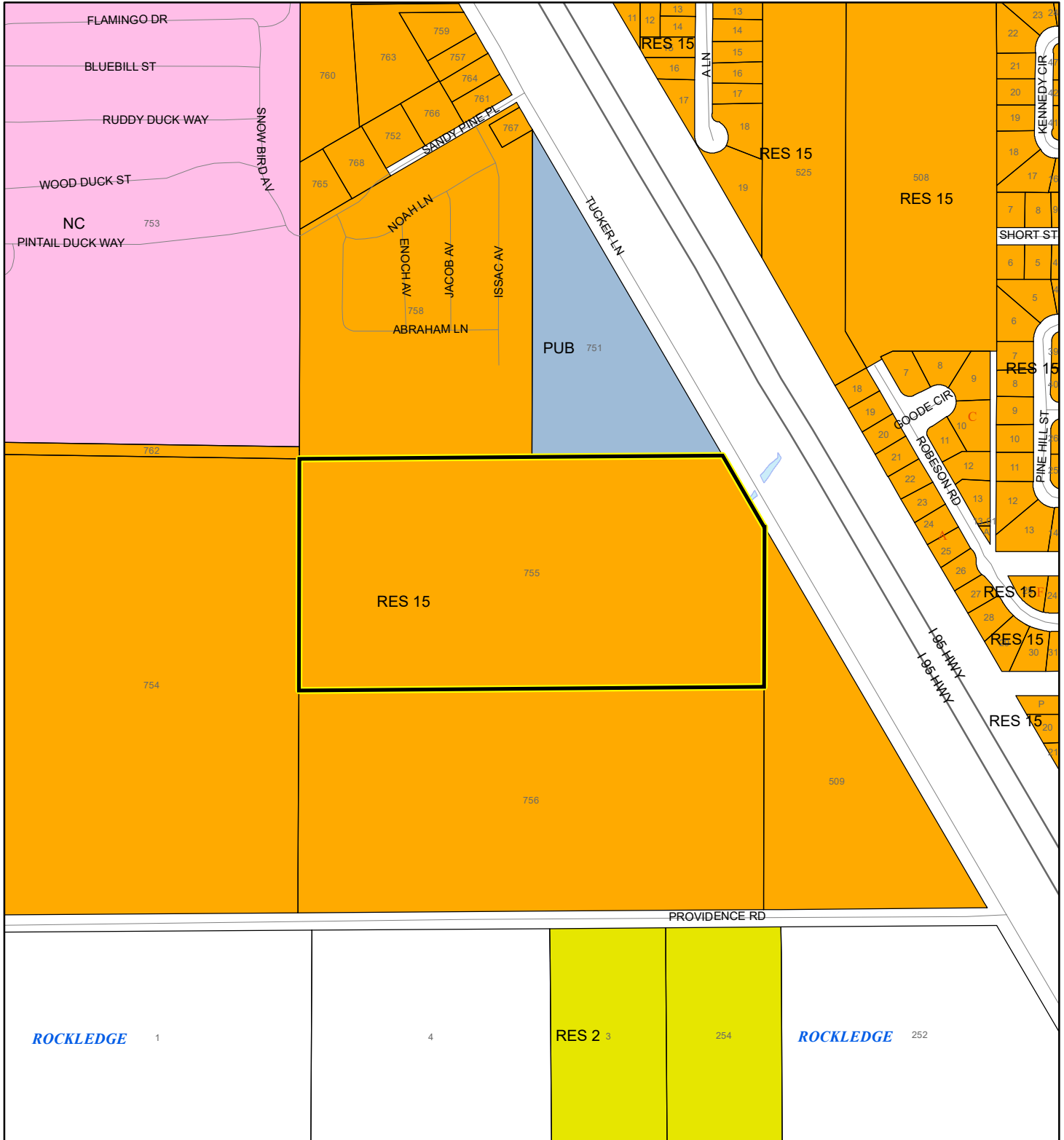
Parcels

Zoning

# FUTURE LAND USE MAP

TG RENTALS OF BREVARD LLC

25Z00016



1:4,800 or 1 inch = 400 feet

This map was compiled from recorded documents and does not reflect an actual survey. The Brevard County Board of County Commissioners does not assume responsibility for errors or omissions hereon.

Produced by BoCC - GIS Date: 4/23/2025

**Subject Property**  
**Parcels**



# AERIAL MAP

TG RENTALS OF BREVARD LLC

25Z00016




1:4,800 or 1 inch = 400 feet

PHOTO YEAR: 2024

This map was compiled from recorded documents and does not reflect an actual survey. The Brevard County Board of County Commissioners does not assume responsibility for errors or omissions hereon.

Produced by BoCC - GIS Date: 4/23/2025

 Subject Property

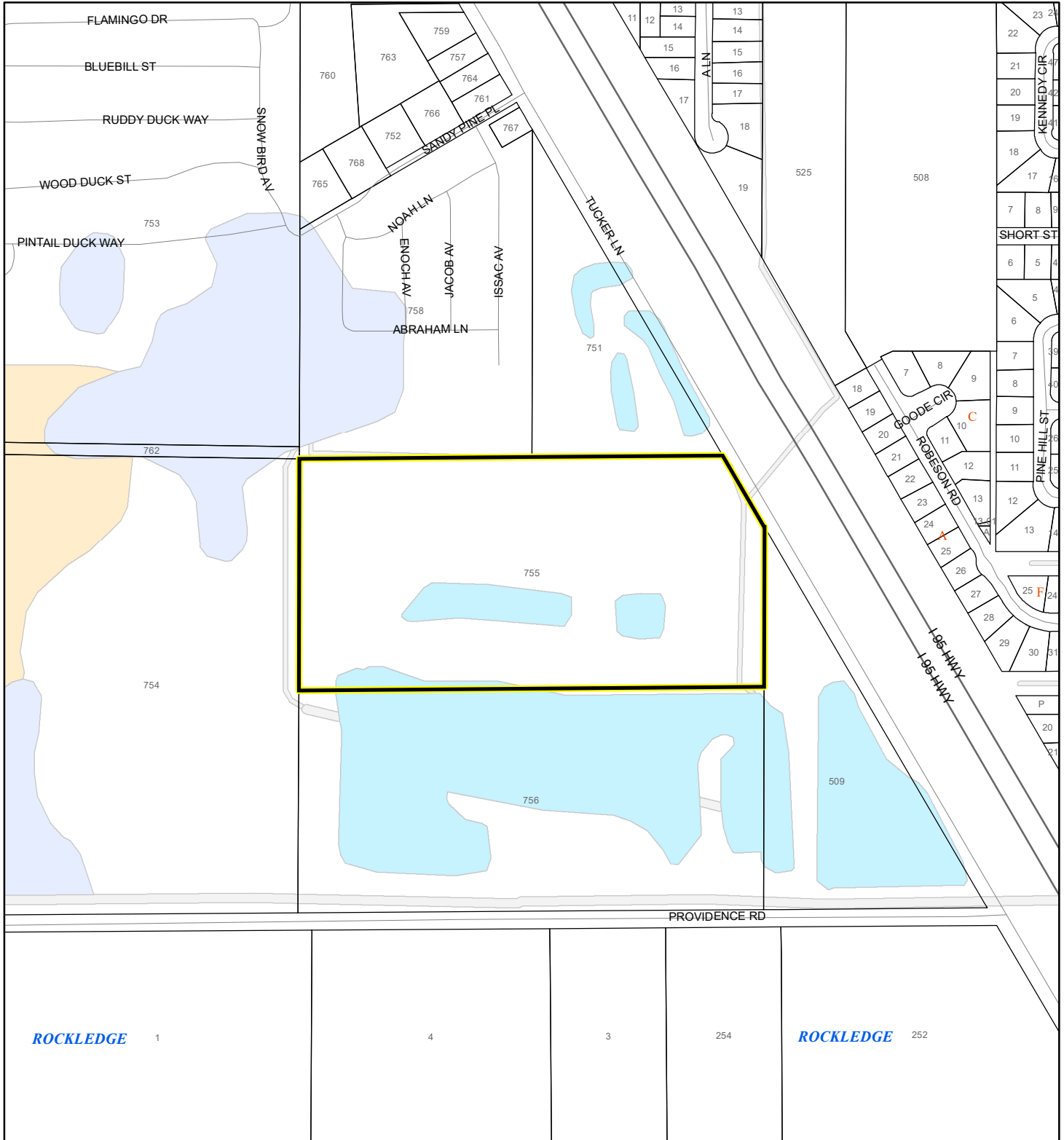
 Parcels



# NWI WETLANDS MAP

TG RENTALS OF BREVARD LLC

25Z00016



1:4,800 or 1 inch = 400 feet

This map was compiled from recorded documents and does not reflect an actual survey. The Brevard County Board of County Commissioners does not assume responsibility for errors or omissions hereon.

Produced by BoCC - GIS Date: 4/23/2025

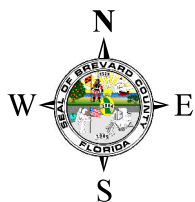
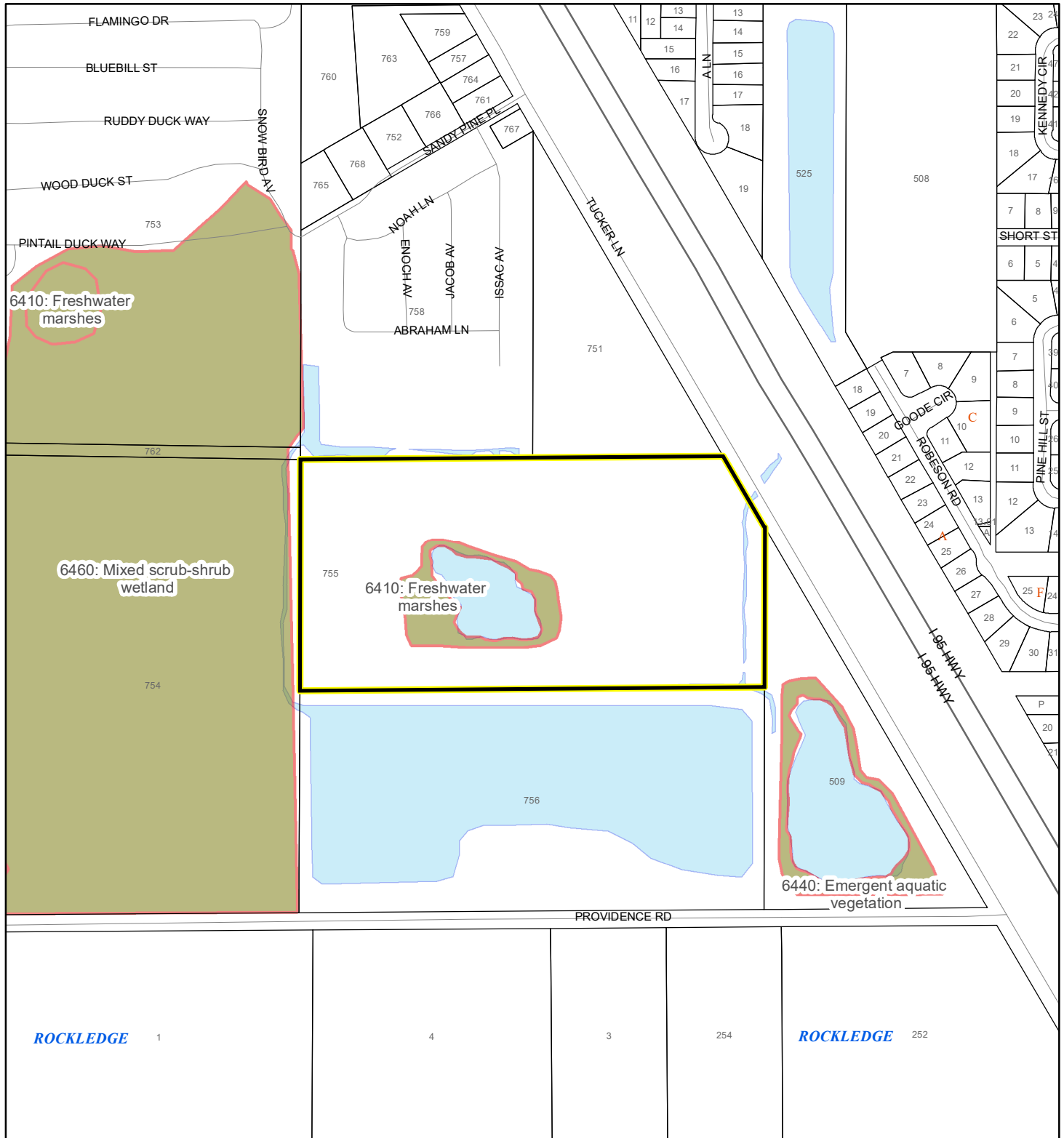
## National Wetlands Inventory (NWI)

Estuarine and Marine Deepwater	Freshwater Pond
Estuarine and Marine Wetland	Lake
Freshwater Emergent Wetland	Other
Freshwater Forested/Shrub Wetland	Riverine
	Subject Property
	Parcels

# SJRWMD FLUCCS WETLANDS - 6000 Series MAP

TG RENTALS OF BREVARD LLC

25Z00016



1:4,800 or 1 inch = 400 feet

This map was compiled from recorded documents and does not reflect an actual survey. The Brevard County Board of County Commissioners does not assume responsibility for errors or omissions hereon.

Produced by BoCC - GIS Date: 4/23/2025

## SJRWMD FLUCCS WETLANDS

- Wetland Hardwood Forests - Series 6100
- Wetland Coniferous Forest - Series 6200
- Wetland Forested Mixed - Series 6300
- Vegetated Non-Forested Wetlands - Series 6400
- Non-Vegetated Wetland - Series 6500

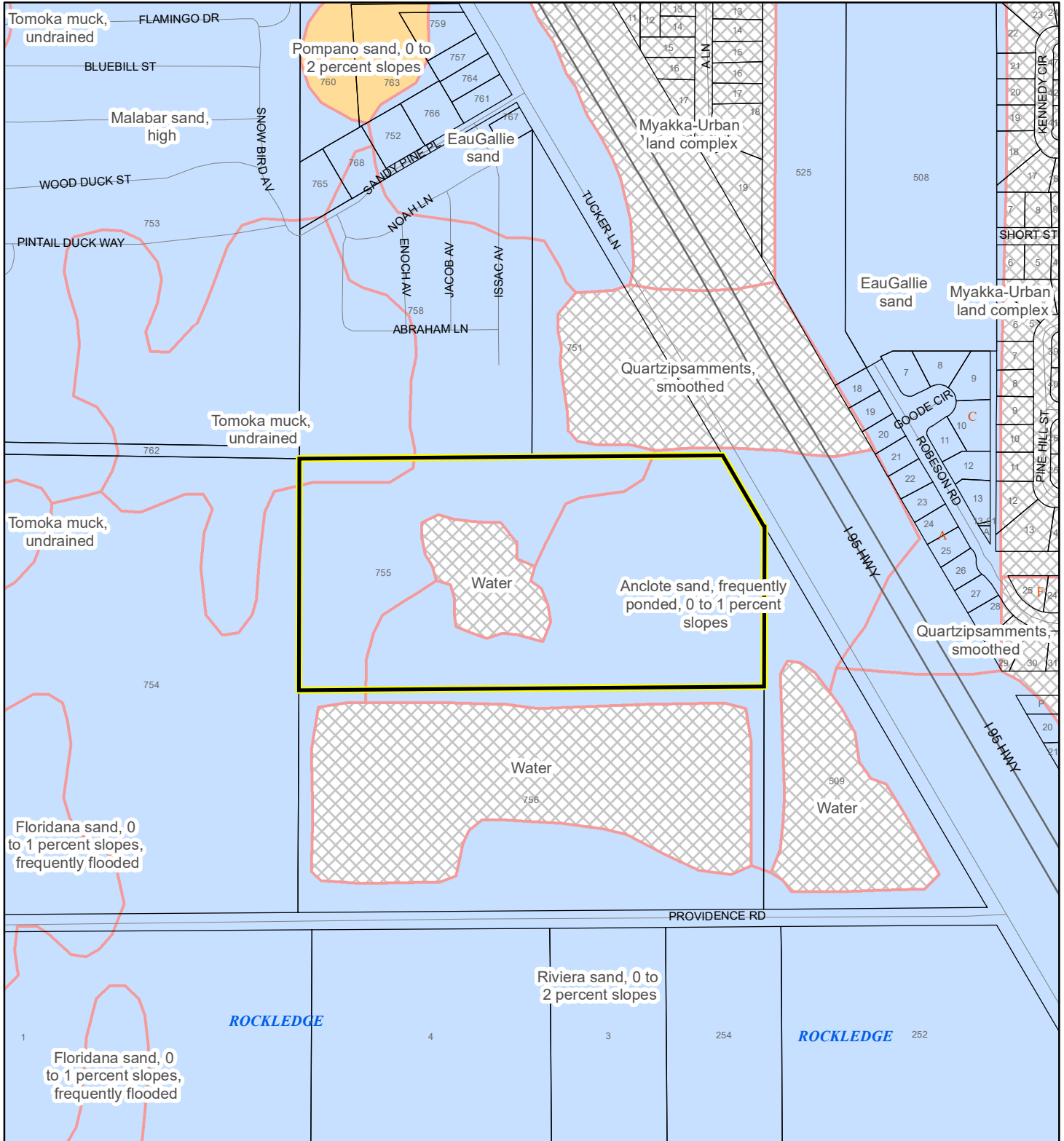
Subject Property

Parcels

# USDA SCSSS SOILS MAP

TG RENTALS OF BREVARD LLC

25Z00016



1:4,800 or 1 inch = 400 feet

This map was compiled from recorded documents and does not reflect an actual survey. The Brevard County Board of County Commissioners does not assume responsibility for errors or omissions hereon.

Produced by BoCC - GIS Date: 4/23/2025

## USDA SCSSS Soils

- Aquifer and Hydric
- Aquifer
- Hydric
- None

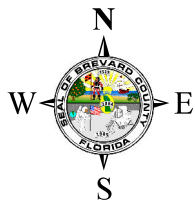
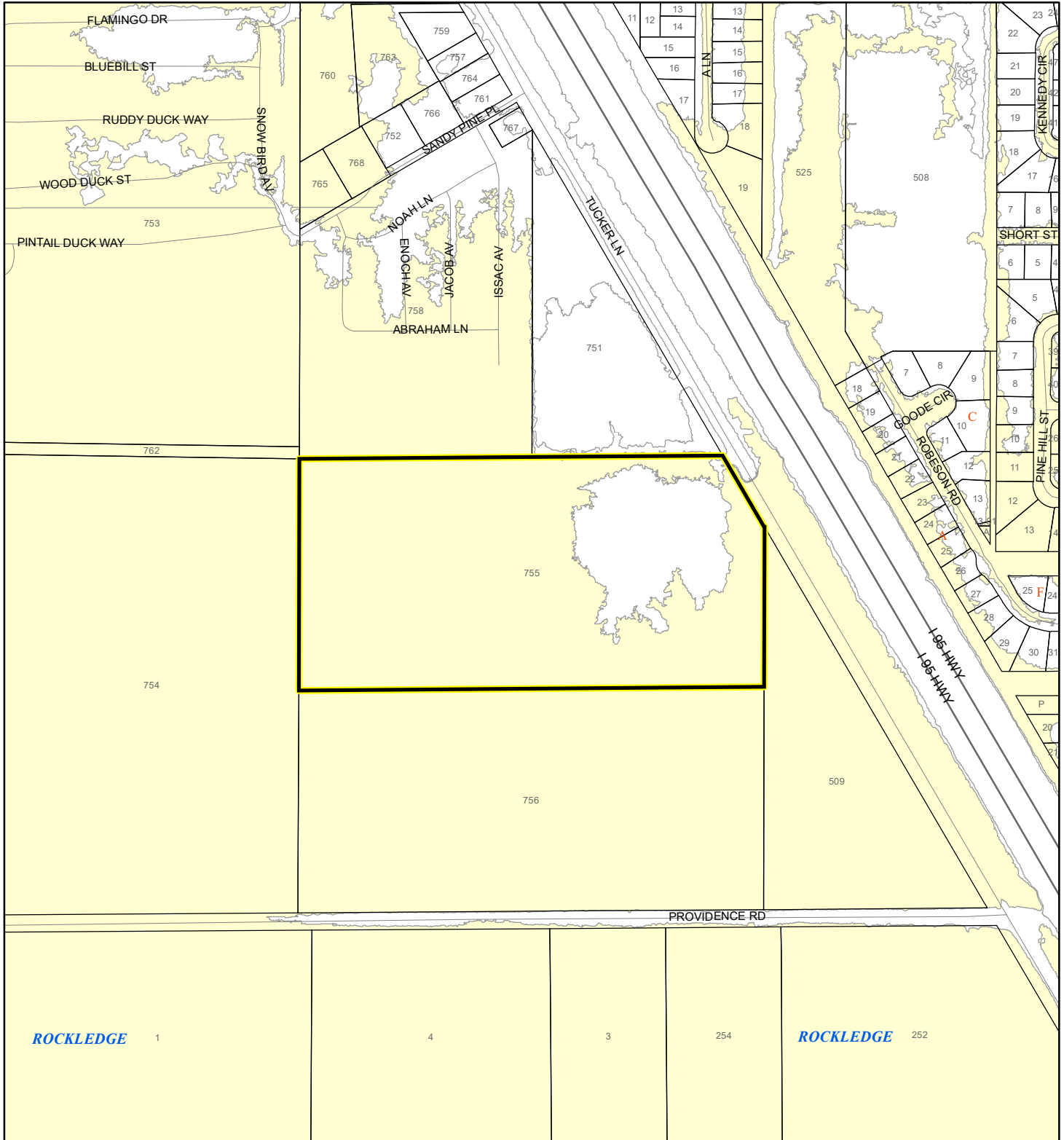
Subject Property

Parcels

# FEMA FLOOD ZONES MAP

TG RENTALS OF BREVARD LLC

25Z00016



1:4,800 or 1 inch = 400 feet

This map was compiled from recorded documents and does not reflect an actual survey. The Brevard County Board of County Commissioners does not assume responsibility for errors or omissions hereon.

Produced by BoCC - GIS Date: 4/23/2025

## FEMA Flood Zones

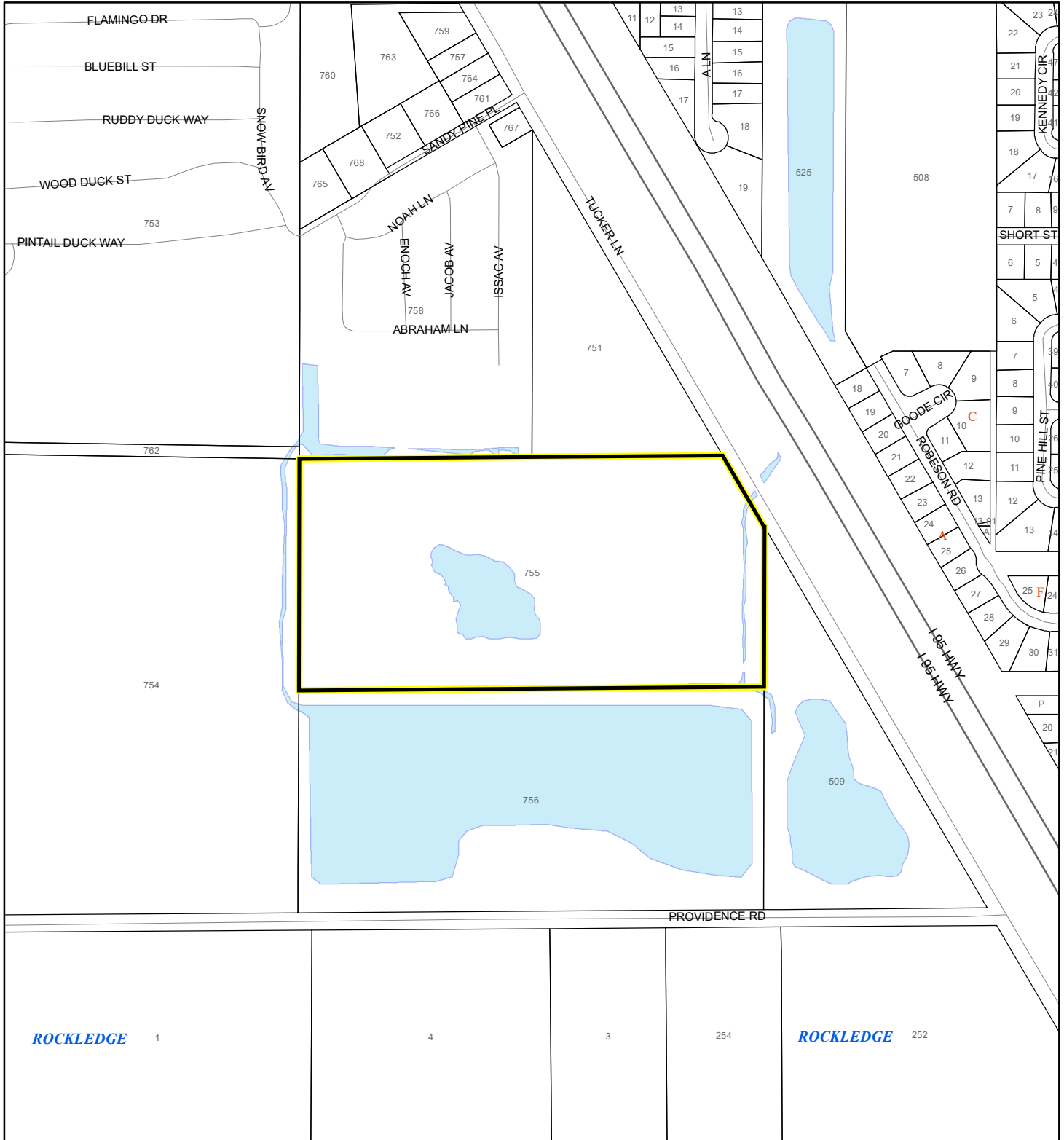
- |   |  |   |
|---|--|---|
| <span style="display: inline-block; width: 15px; height: 15px; background-color: #FFB6C1; border: 1px solid black;"></span> A               | <span style="display: inline-block; width: 15px; height: 15px; background-color: #FFFF00; border: 1px solid black;"></span> AO         | <span style="display: inline-block; width: 15px; height: 15px; background-color: white; border: 1px solid black;"></span> X |
| <span style="display: inline-block; width: 15px; height: 15px; background-color: #FFFF00; border: 1px solid black;"></span> AE              | <span style="display: inline-block; width: 15px; height: 15px; background-color: #FFDAB9; border: 1px solid black;"></span> Open Water |   |
| <span style="display: inline-block; width: 15px; height: 15px; background-color: #ADD8E6; border: 1px solid black;"></span> AH              | <span style="display: inline-block; width: 15px; height: 15px; background-color: #FFDAB9; border: 1px solid black;"></span> VE         |   |
| <span style="display: inline-block; width: 15px; height: 15px; background-color: yellow; border: 2px solid black;"></span> Subject Property | <span style="display: inline-block; width: 15px; height: 15px; border: 1px solid black;"></span> Parcels                               |   |



# COASTAL HIGH HAZARD AREA MAP

TG RENTALS OF BREVARD LLC

25Z00016



1:4,800 or 1 inch = 400 feet


This map was compiled from recorded documents and does not reflect an actual survey. The Brevard County Board of County Commissioners does not assume responsibility for errors or omissions hereon.

Produced by BoCC - GIS Date: 4/23/2025

 Subject Property

 Parcels

**Coastal High Hazard Area**

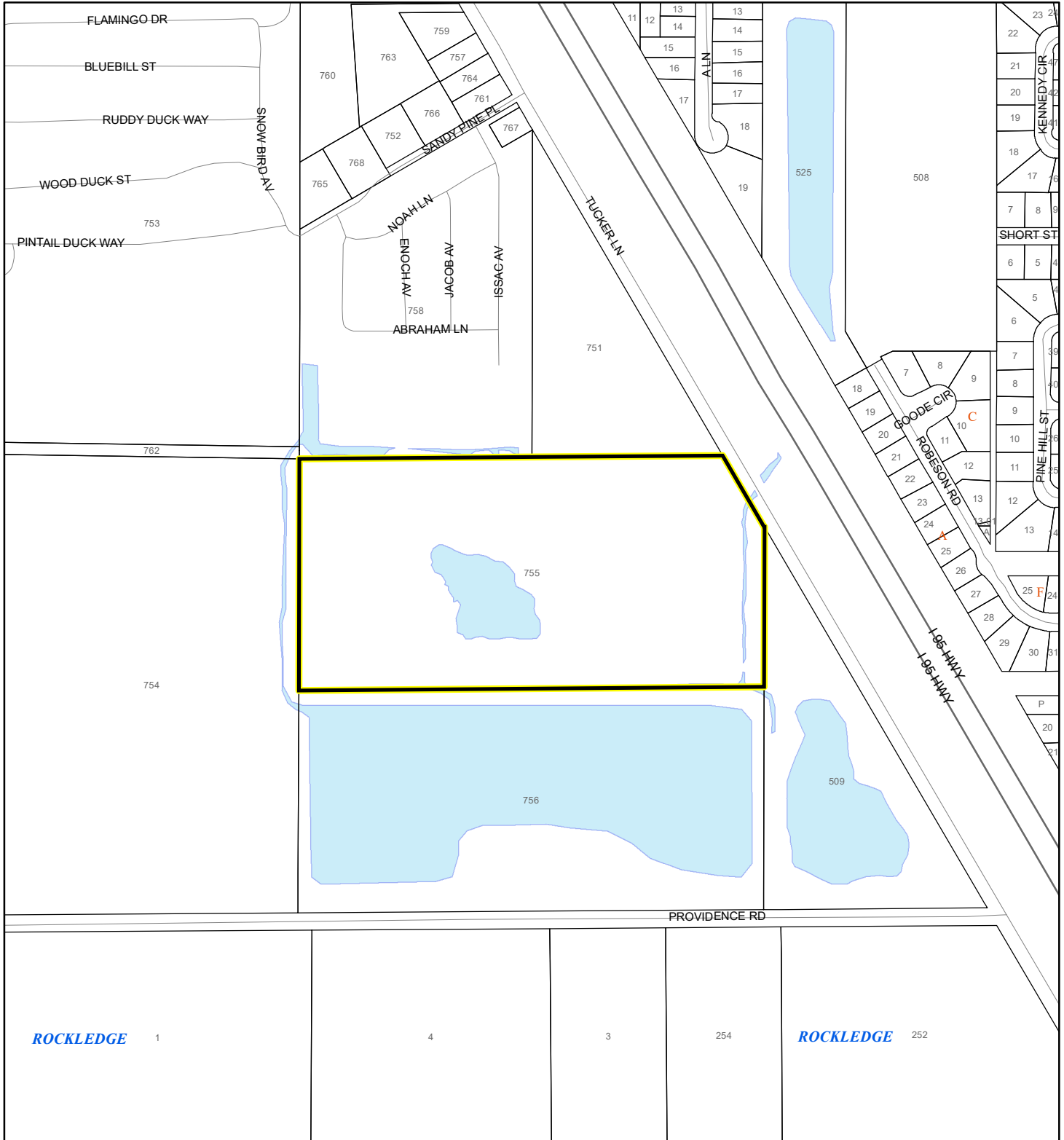
 SurgeZoneCat1

 All Distances

# EAGLE NESTS MAP

TG RENTALS OF BREVARD LLC

25Z00016



1:4,800 or 1 inch = 400 feet

This map was compiled from recorded documents and does not reflect an actual survey. The Brevard County Board of County Commissioners does not assume responsibility for errors or omissions hereon.

Produced by BoCC - GIS Date: 4/23/2025

 Subject Property

 Parcels

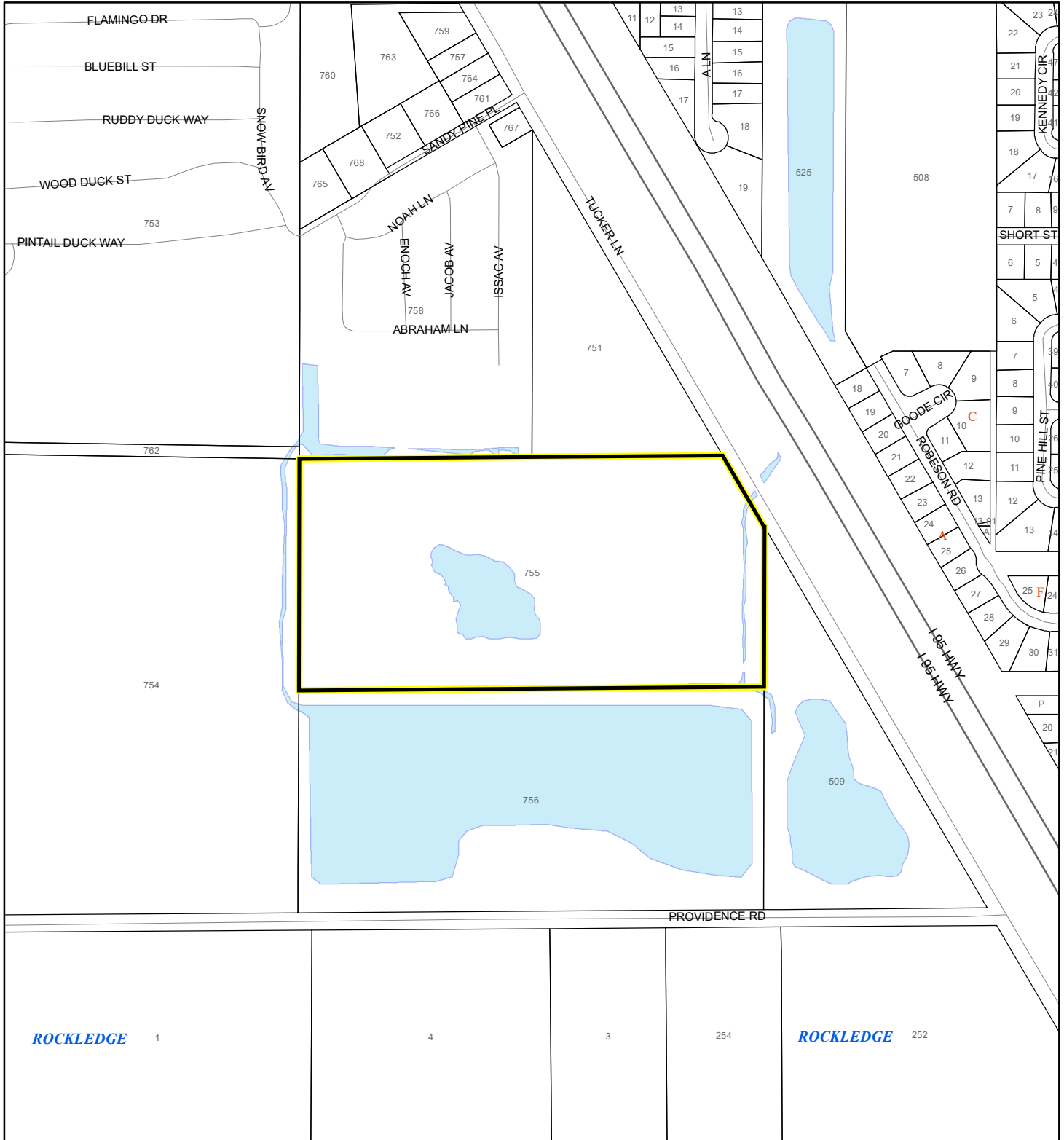
 Eagle Nests  
FWS



# SCRUB JAY OCCUPANCY MAP

TG RENTALS OF BREVARD LLC

25Z00016



1:4,800 or 1 inch = 400 feet

This map was compiled from recorded documents and does not reflect an actual survey. The Brevard County Board of County Commissioners does not assume responsibility for errors or omissions hereon.

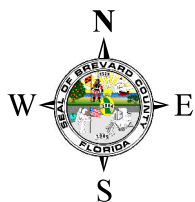
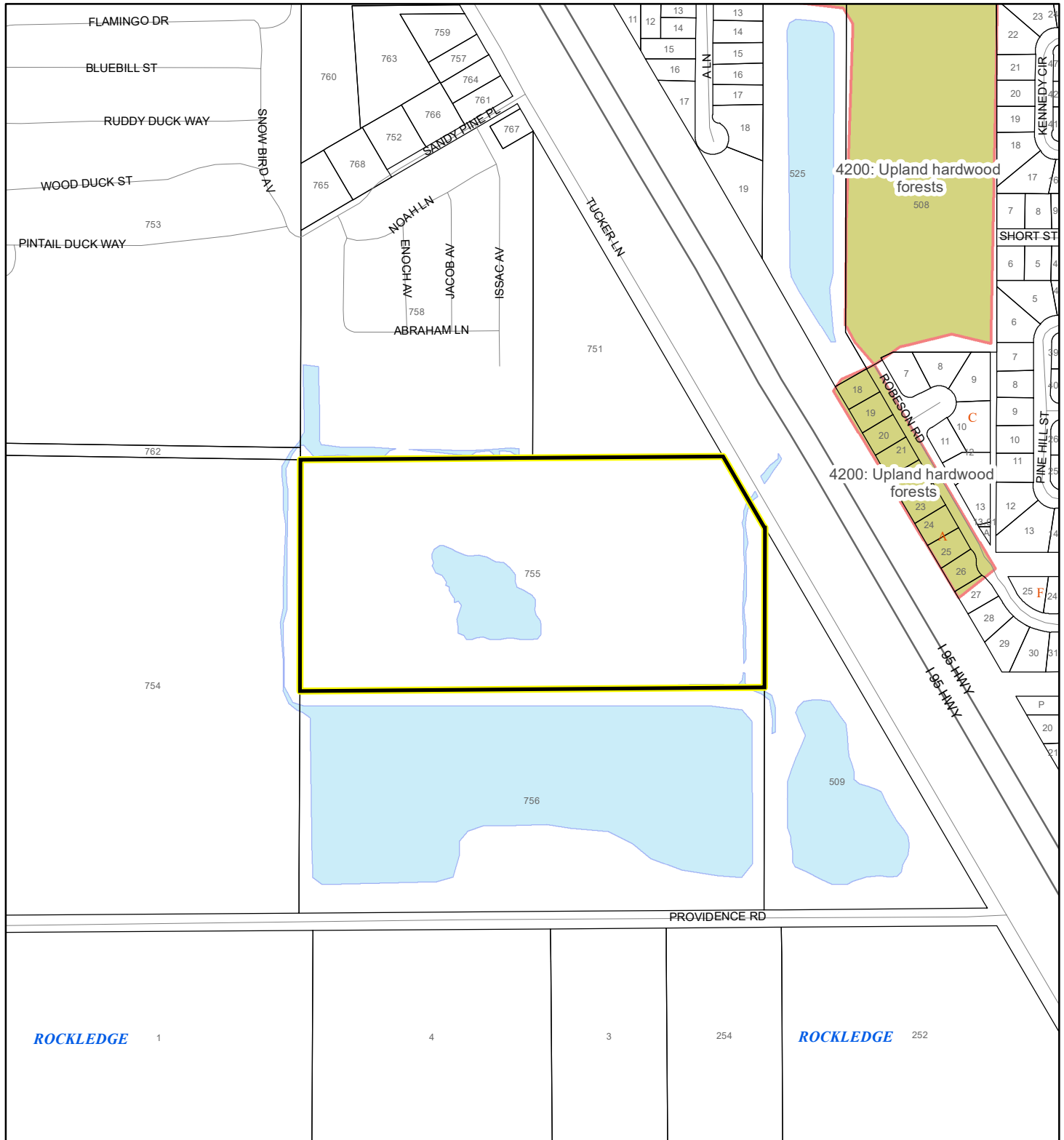
Produced by BoCC - GIS Date: 4/23/2025

- Subject Property
- Parcels
- Scrub Jay Occupancy

# SJRWMD FLUCCS UPLAND FORESTS - 4000 Series MAP

TG RENTALS OF BREVARD LLC

25Z00016



1:4,800 or 1 inch = 400 feet

This map was compiled from recorded documents and does not reflect an actual survey. The Brevard County Board of County Commissioners does not assume responsibility for errors or omissions hereon.

Produced by BoCC - GIS Date: 4/23/2025

## SJRWMD FLUCCS Upland Forests

- Upland Coniferous Forest - 4100 Series
- Upland Hardwood Forest - 4200 Series
- Upland Mixed Forest - 4300 Series
- Tree Plantations - 4400 Series

Subject Property  Parcels