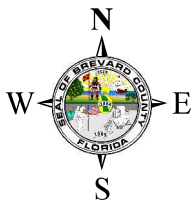
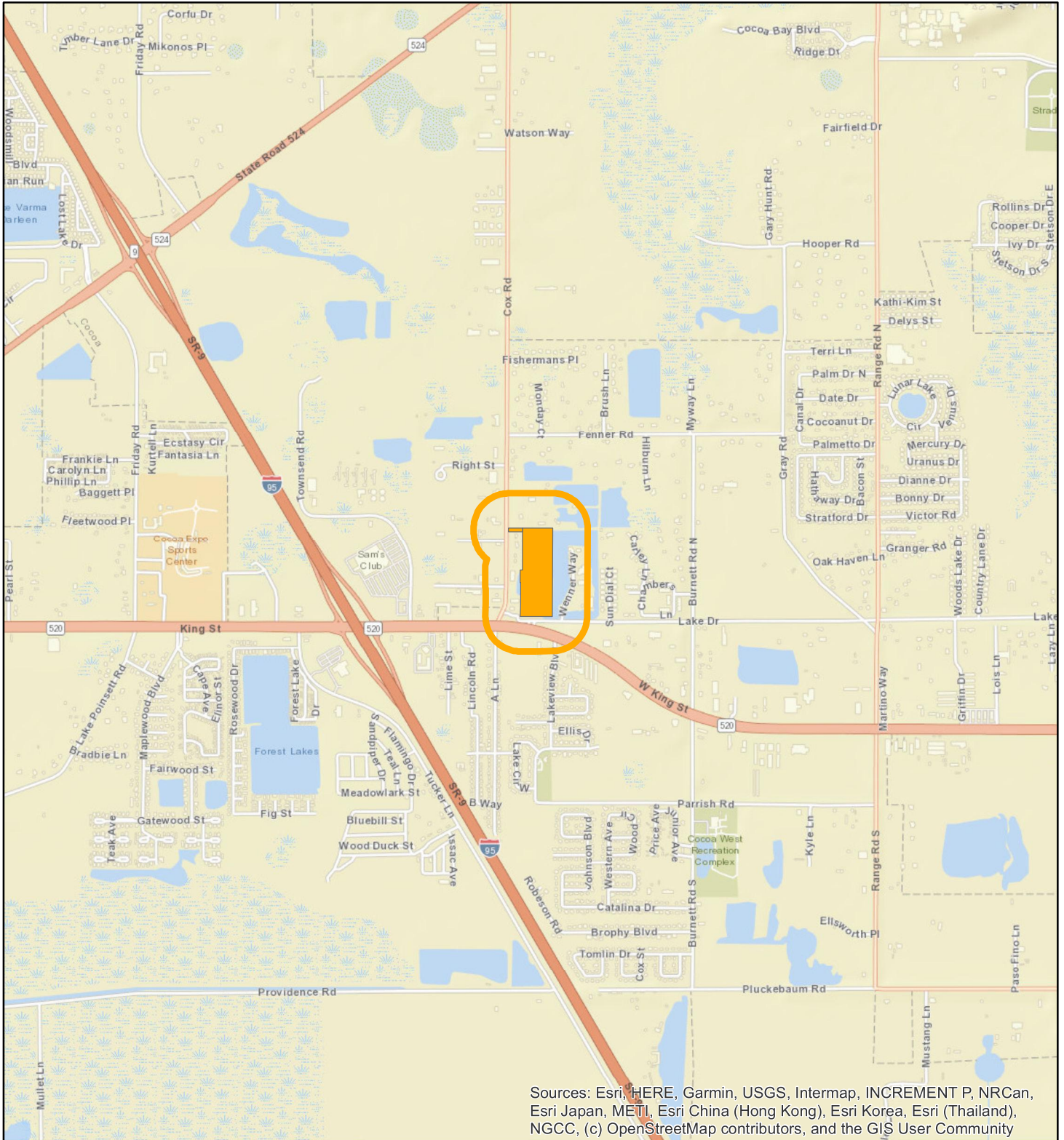


LOCATION MAP

COCOA TOWN CENTER LLC

26Z00010





1:24,000 or 1 inch = 2,000 feet

Buffer Distance: 500 feet

This map was compiled from recorded documents and does not reflect an actual survey. The Brevard County Board of County Commissioners does not assume responsibility for errors or omissions hereon.

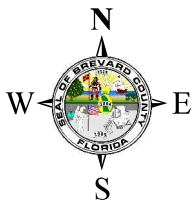
Produced by BoCC - GIS Date: 5/4/2026

-  Buffer
-  Subject Property

ZONING MAP

COCOA TOWN CENTER LLC

26Z00010



1:4,800 or 1 inch = 400 feet

- Subject Property
- Parcels
- Zoning

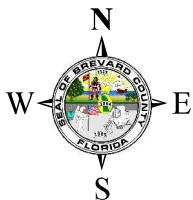
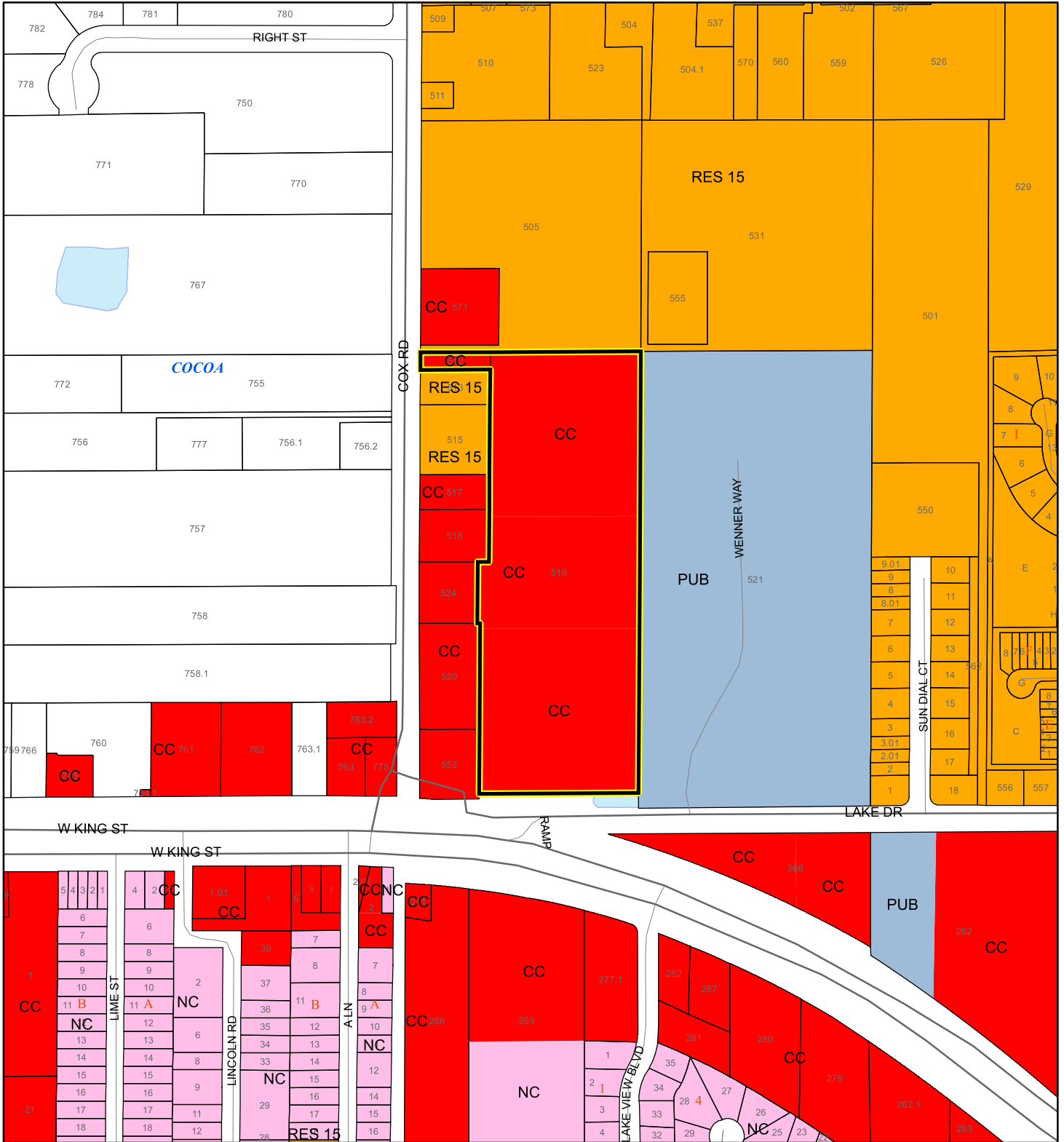
This map was compiled from recorded documents and does not reflect an actual survey. The Brevard County Board of County Commissioners does not assume responsibility for errors or omissions hereon.

Produced by BoCC - GIS Date: 5/4/2026



FUTURE LAND USE MAP

COCOA TOWN CENTER LLC

26Z00010



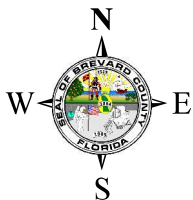
1:4,800 or 1 inch = 400 feet

 Subject Property
 Parcels

This map was compiled from recorded documents and does not reflect an actual survey. The Brevard County Board of County Commissioners does not assume responsibility for errors or omissions hereon.

Produced by BoCC - GIS Date: 5/4/2026

AERIAL MAP
COCOA TOWN CENTER LLC
26Z00010





1:4,800 or 1 inch = 400 feet

PHOTO YEAR: 2026

This map was compiled from recorded documents and does not reflect an actual survey. The Brevard County Board of County Commissioners does not assume responsibility for errors or omissions hereon.

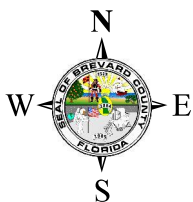
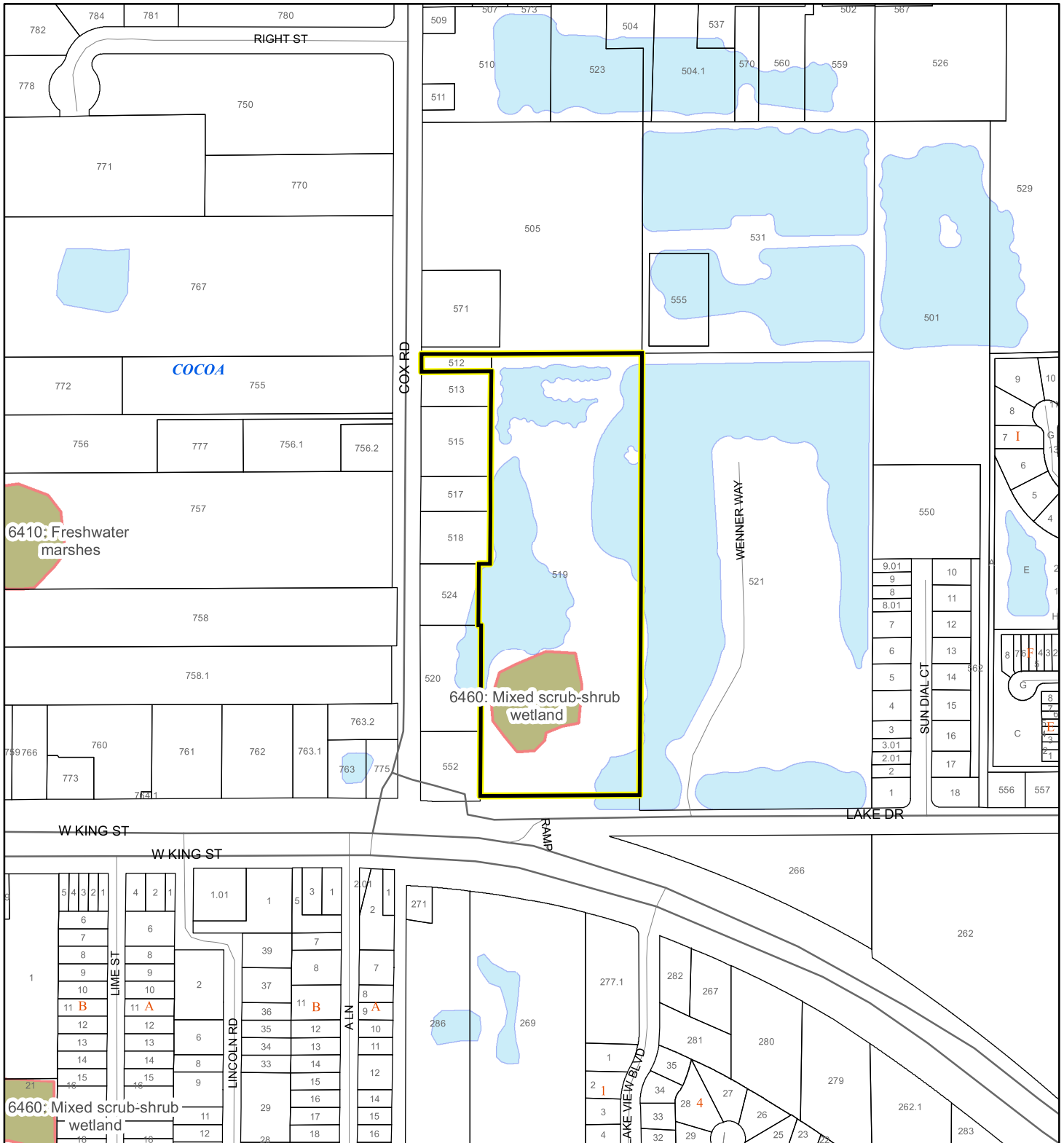
Produced by BoCC - GIS Date: 5/4/2026

 Subject Property
 Parcels

SJRWMD FLUCCS WETLANDS - 6000 Series MAP

COCOA TOWN CENTER LLC

26Z00010



1:4,800 or 1 inch = 400 feet

This map was compiled from recorded documents and does not reflect an actual survey. The Brevard County Board of County Commissioners does not assume responsibility for errors or omissions hereon.

Produced by BoCC - GIS Date: 5/4/2026

SJRWMD FLUCCS WETLANDS

- Wetland Hardwood Forests - Series 6100
- Wetland Coniferous Forest - Series 6200
- Wetland Forested Mixed - Series 6300
- Vegetated Non-Forested Wetlands - Series 6400
- Non-Vegetated Wetland - Series 6500

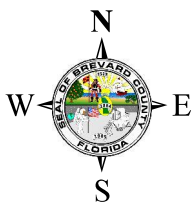
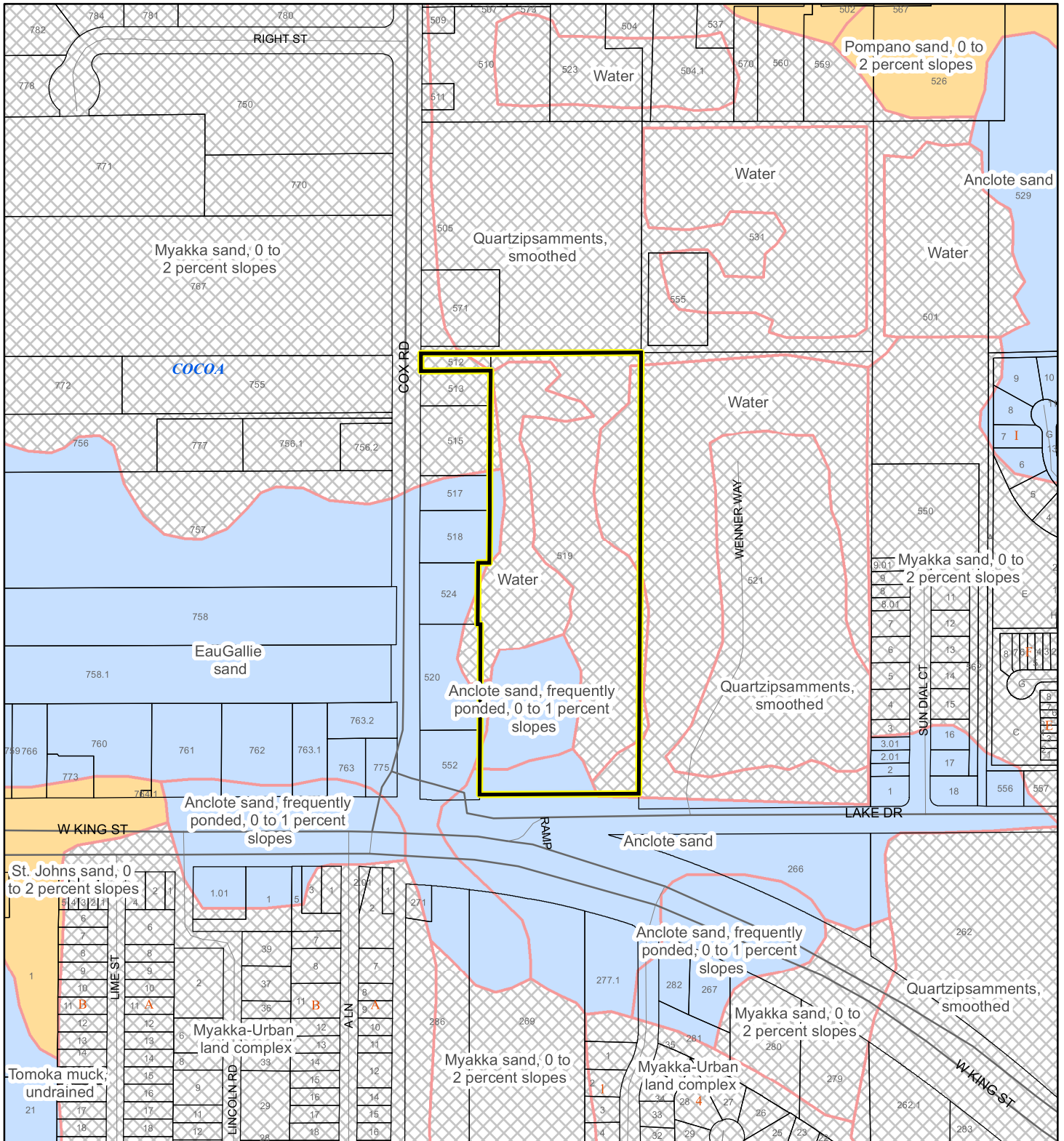
Subject Property

Parcels

USDA SCSSS SOILS MAP

COCOA TOWN CENTER LLC

26Z00010



1:4,800 or 1 inch = 400 feet

This map was compiled from recorded documents and does not reflect an actual survey. The Brevard County Board of County Commissioners does not assume responsibility for errors or omissions hereon.

Produced by BoCC - GIS Date: 5/4/2026

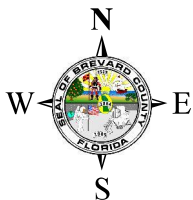
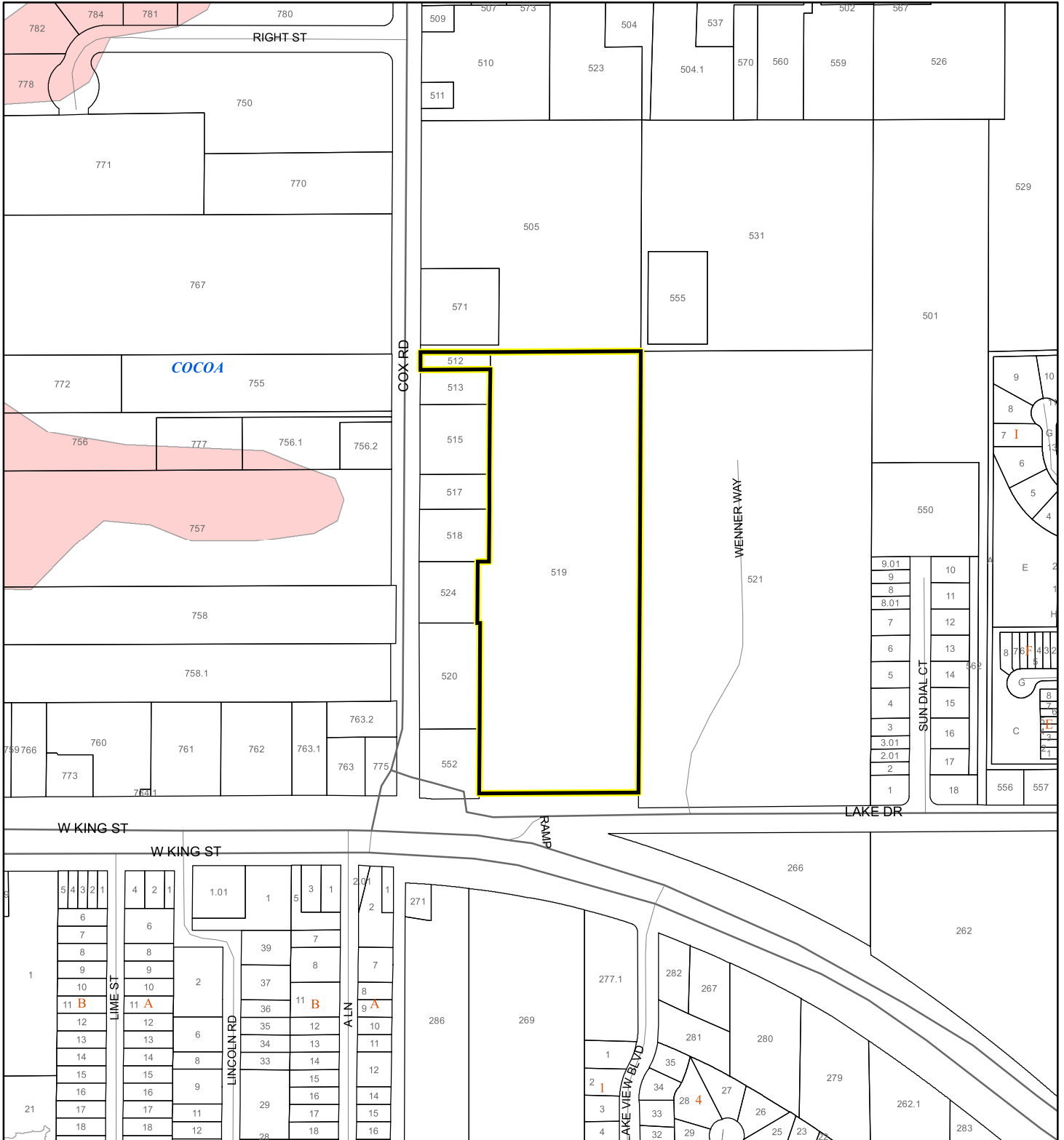
USDA SCSSS Soils

- Aquifer and Hydric
- Aquifer
- Hydric
- None
- Subject Property
- Parcels

FEMA FLOOD ZONES MAP

COCOA TOWN CENTER LLC

26Z00010



1:4,800 or 1 inch = 400 feet

FEMA Flood Zones

- A
- AE
- AH
- AO
- Open Water
- VE
- X
- Subject Property
- Parcels

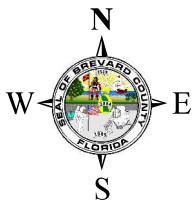
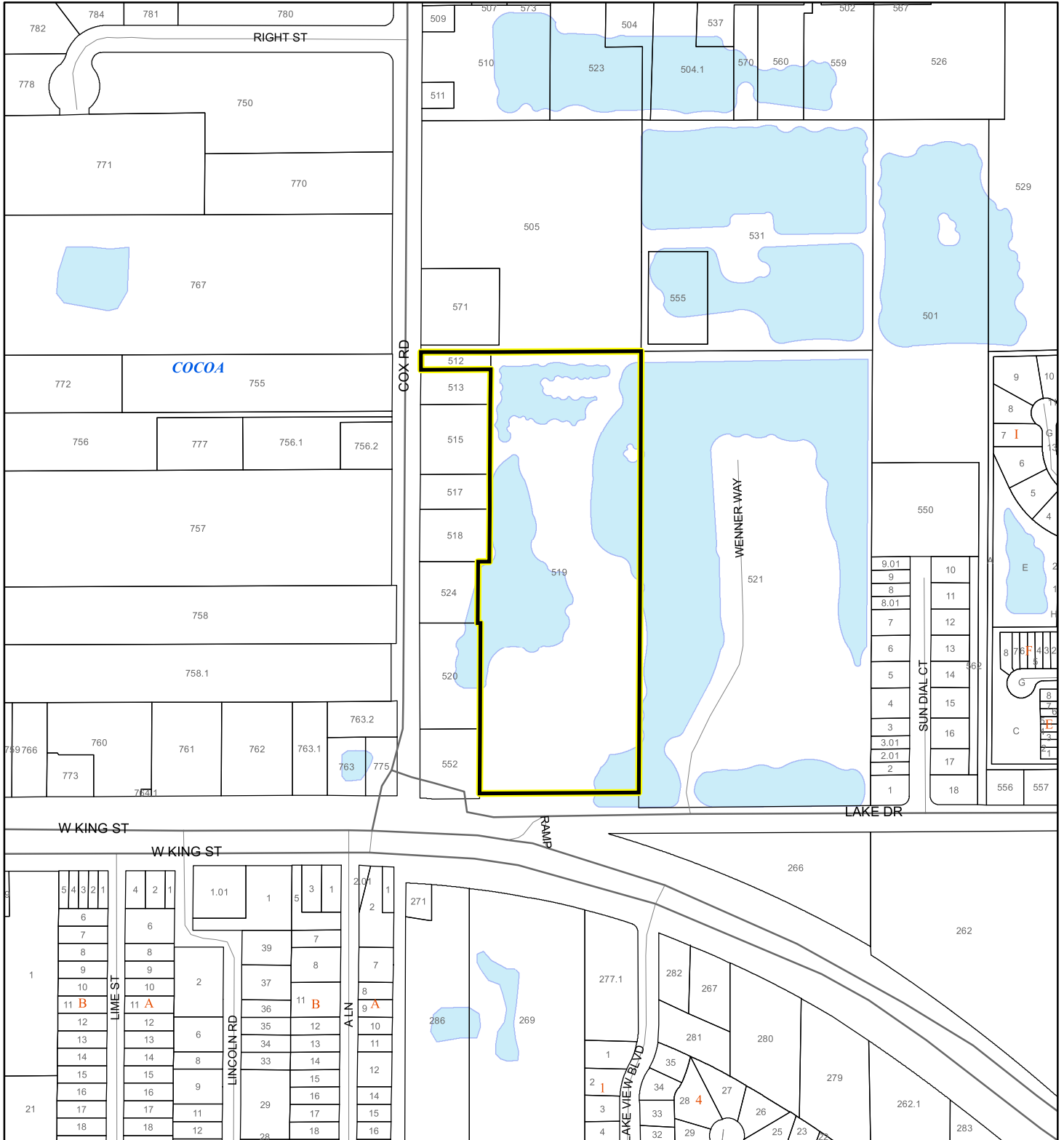
This map was compiled from recorded documents and does not reflect an actual survey. The Brevard County Board of County Commissioners does not assume responsibility for errors or omissions hereon.

Produced by BoCC - GIS Date: 5/4/2026

COASTAL HIGH HAZARD AREA MAP

COCOA TOWN CENTER LLC

26Z00010



1:4,800 or 1 inch = 400 feet

This map was compiled from recorded documents and does not reflect an actual survey. The Brevard County Board of County Commissioners does not assume responsibility for errors or omissions hereon.

Produced by BoCC - GIS Date: 5/4/2026

 Subject Property

 Parcels

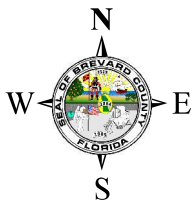
Coastal High Hazard Area

 SurgeZoneCat1

INDIAN RIVER LAGOON SEPTIC OVERLAY MAP

COCOA TOWN CENTER LLC

26Z00010



1:4,800 or 1 inch = 400 feet

This map was compiled from recorded documents and does not reflect an actual survey. The Brevard County Board of County Commissioners does not assume responsibility for errors or omissions hereon.

Produced by BoCC - GIS Date: 5/4/2026

 Subject Property

 Parcels

Septic Overlay

 40 Meters

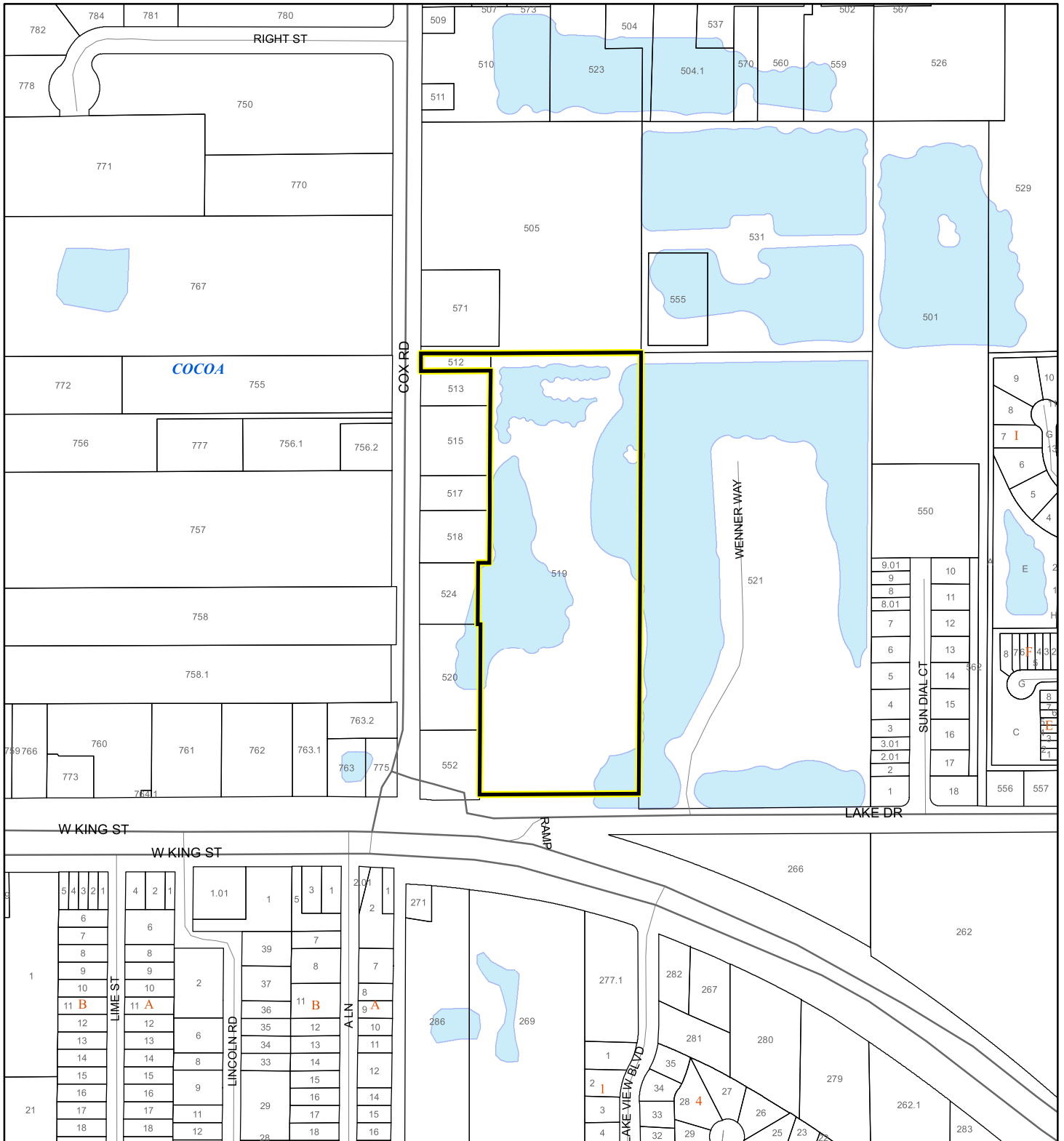
 60 Meters

 All Distances

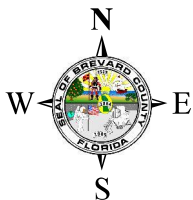
EAGLE NESTS MAP

COCOA TOWN CENTER LLC

26Z00010



1:4,800 or 1 inch = 400 feet



This map was compiled from recorded documents and does not reflect an actual survey. The Brevard County Board of County Commissioners does not assume responsibility for errors or omissions hereon.

Produced by BoCC - GIS Date: 5/4/2026

 Subject Property

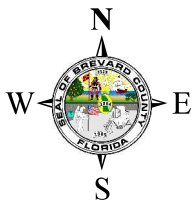
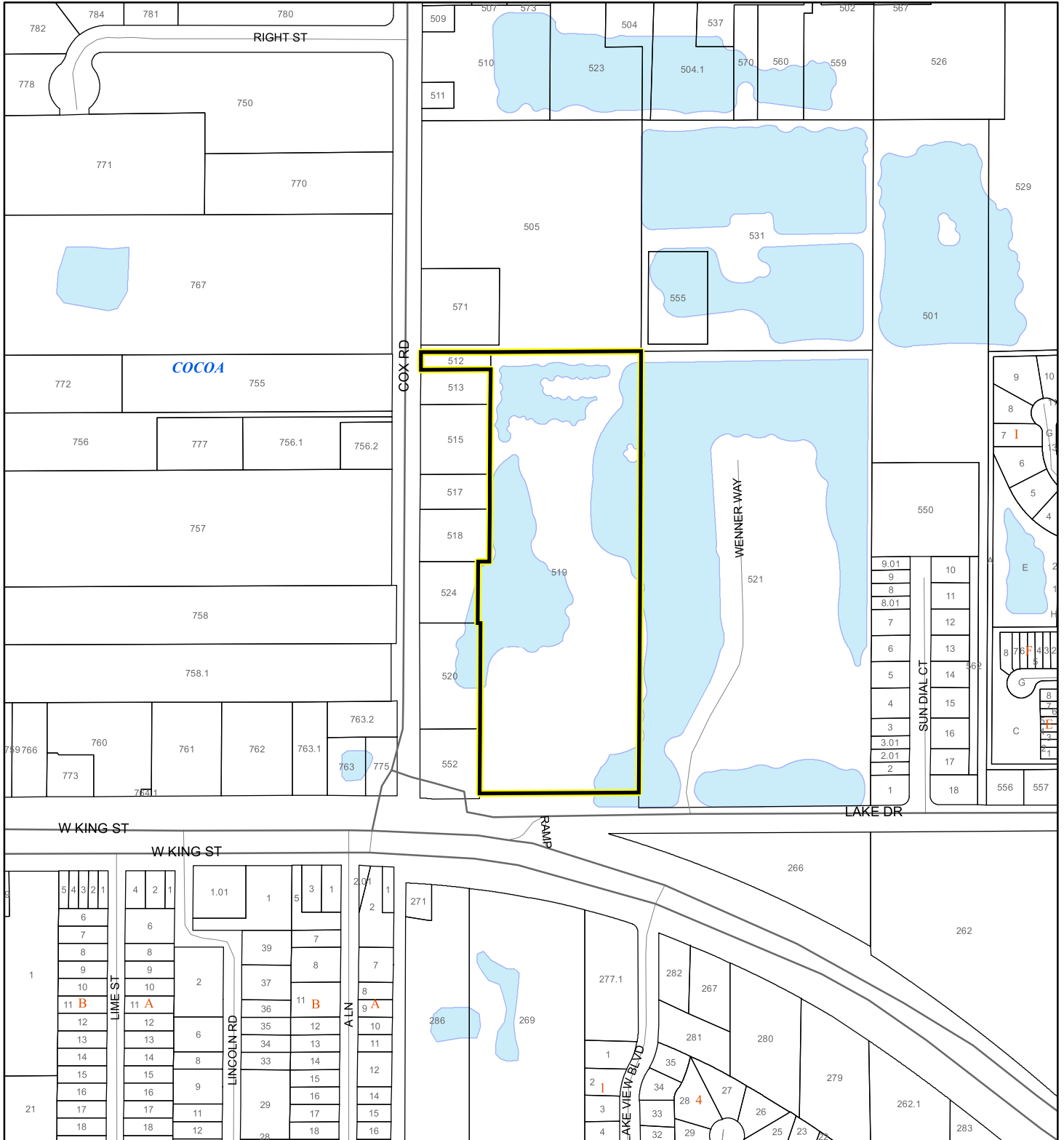
 Parcels

 Eagle Nests FWS

SCRUB JAY OCCUPANCY MAP

COCOA TOWN CENTER LLC




26Z00010



1:4,800 or 1 inch = 400 feet

This map was compiled from recorded documents and does not reflect an actual survey. The Brevard County Board of County Commissioners does not assume responsibility for errors or omissions hereon.

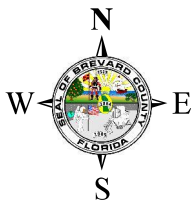
Produced by BoCC - GIS Date: 5/4/2026

-  Subject Property
-  Parcels
-  Scrub Jay Occupancy

SJRWMD FLUCCS UPLAND FORESTS - 4000 Series MAP

COCOA TOWN CENTER LLC

26Z00010



1:4,800 or 1 inch = 400 feet

This map was compiled from recorded documents and does not reflect an actual survey. The Brevard County Board of County Commissioners does not assume responsibility for errors or omissions hereon.

Produced by BoCC - GIS Date: 5/4/2026

SJRWMD FLUCCS Upland Forests

- Upland Coniferous Forest - 4100 Series
- Upland Hardwood Forest - 4200 Series
- Upland Mixed Forest - 4300 Series
- Tree Plantations - 4400 Series

Subject Property Parcels