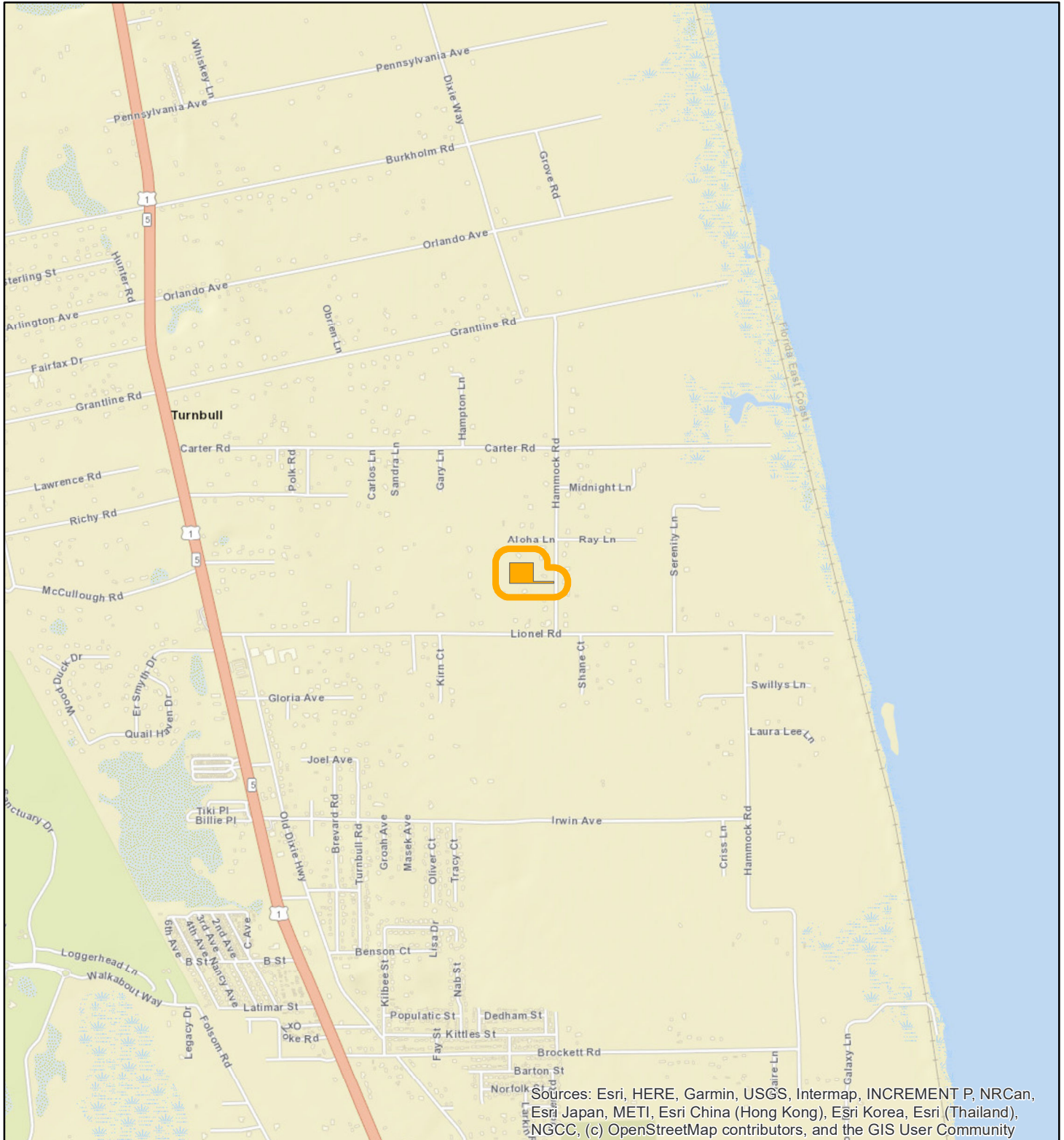


LOCATION MAP

TODD, LORI
25V00053





1:24,000 or 1 inch = 2,000 feet

Buffer Distance: 200 feet

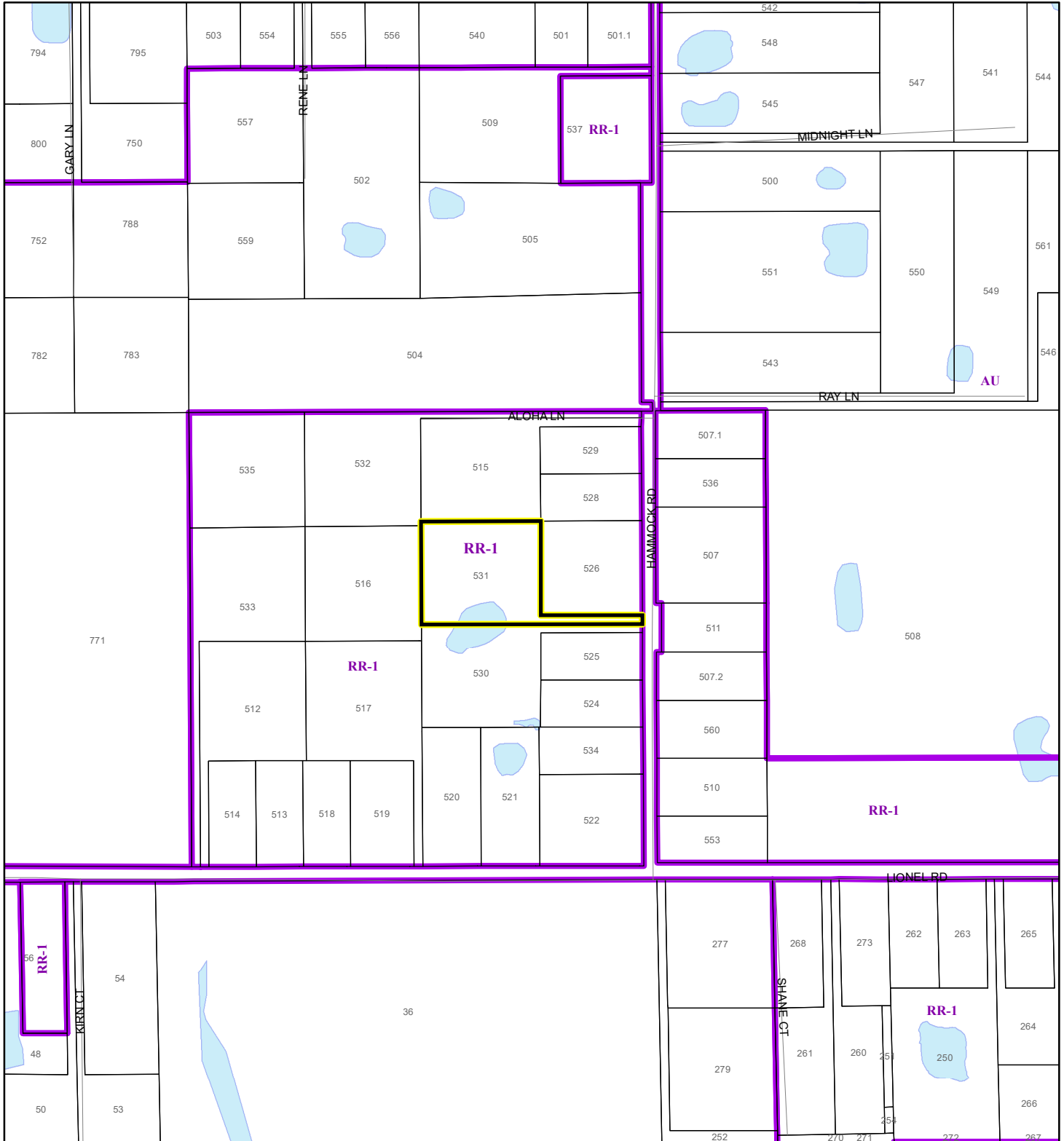
This map was compiled from recorded documents and does not reflect an actual survey. The Brevard County Board of County Commissioners does not assume responsibility for errors or omissions hereon.

Produced by BoCC - GIS Date: 8/12/2025

 Buffer
 Subject Property

ZONING MAP


TODD, LORI
25V00053



1:4,800 or 1 inch = 400 feet

This map was compiled from recorded documents and does not reflect an actual survey. The Brevard County Board of County Commissioners does not assume responsibility for errors or omissions hereon.

Produced by BoCC - GIS Date: 8/12/2025

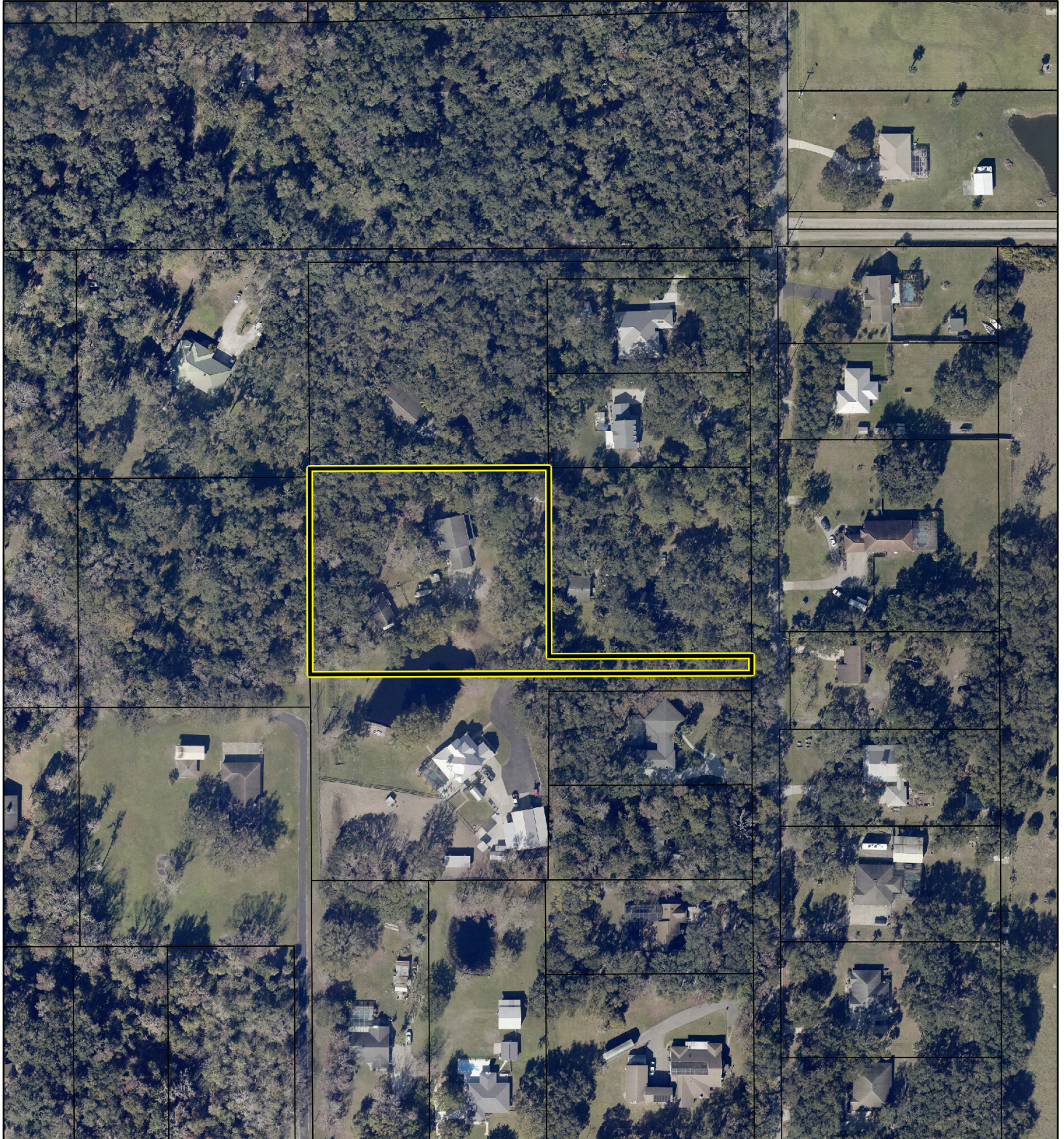
 Subject Property

 Parcels

 Zoning

AERIAL MAP

TODD, LORI
25V00053




1:2,400 or 1 inch = 200 feet

PHOTO YEAR: 2025

This map was compiled from recorded documents and does not reflect an actual survey. The Brevard County Board of County Commissioners does not assume responsibility for errors or omissions hereon.

Produced by BoCC - GIS Date: 8/12/2025

 Subject Property

 Parcels