



Renderings

Light Station 1894-1965



**Storage Building
(now restrooms)**

**2nd Assistant
Keeper's Cottage**

**Head Keeper's
Cottage (now
Museum and Gift
Shop)**

**1st Assistant
Keeper's Cottage**

Light Station Today

Ready to Break Ground



**New Lighthouse
Experience Cottage Site**

**New Replica
Cottage Site**

Replica Cottage

(1st Assistant Keeper)



Two stories with 2,761 square feet. Nearly identical to Head Keeper's Cottage currently housing the Museum and Gift Shop. Step back in time to see how the early keepers and other inhabitants of the Cape lived.

Lighthouse Experience Cottage

(2nd Assistant Keeper)

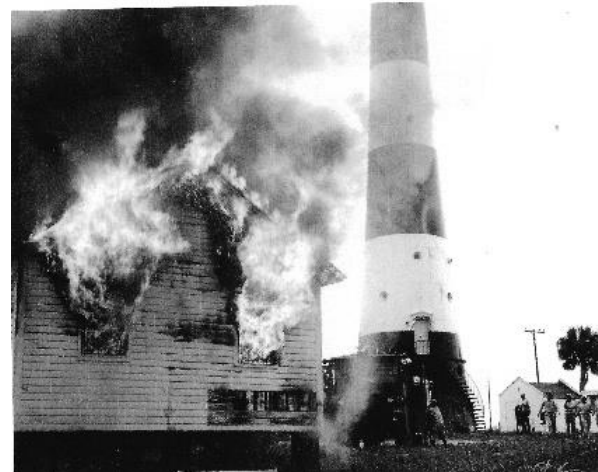


One story with 1,421 square feet. To be used as an experiential and learning center, with interactive and immersive exhibits and displays. Aligns with growing tourism and museum trends to increase visitor engagement.

Light Station Evolution



Light Station 1894-1965



All Cottages Burned in 1966



Light Station 1966-2019



Light Station 2019-present

2026 – The Light Station Lives Again



Restrooms

Museum and
Gift Shop

New Lighthouse
Experience Cottage

New Replica
Cottage