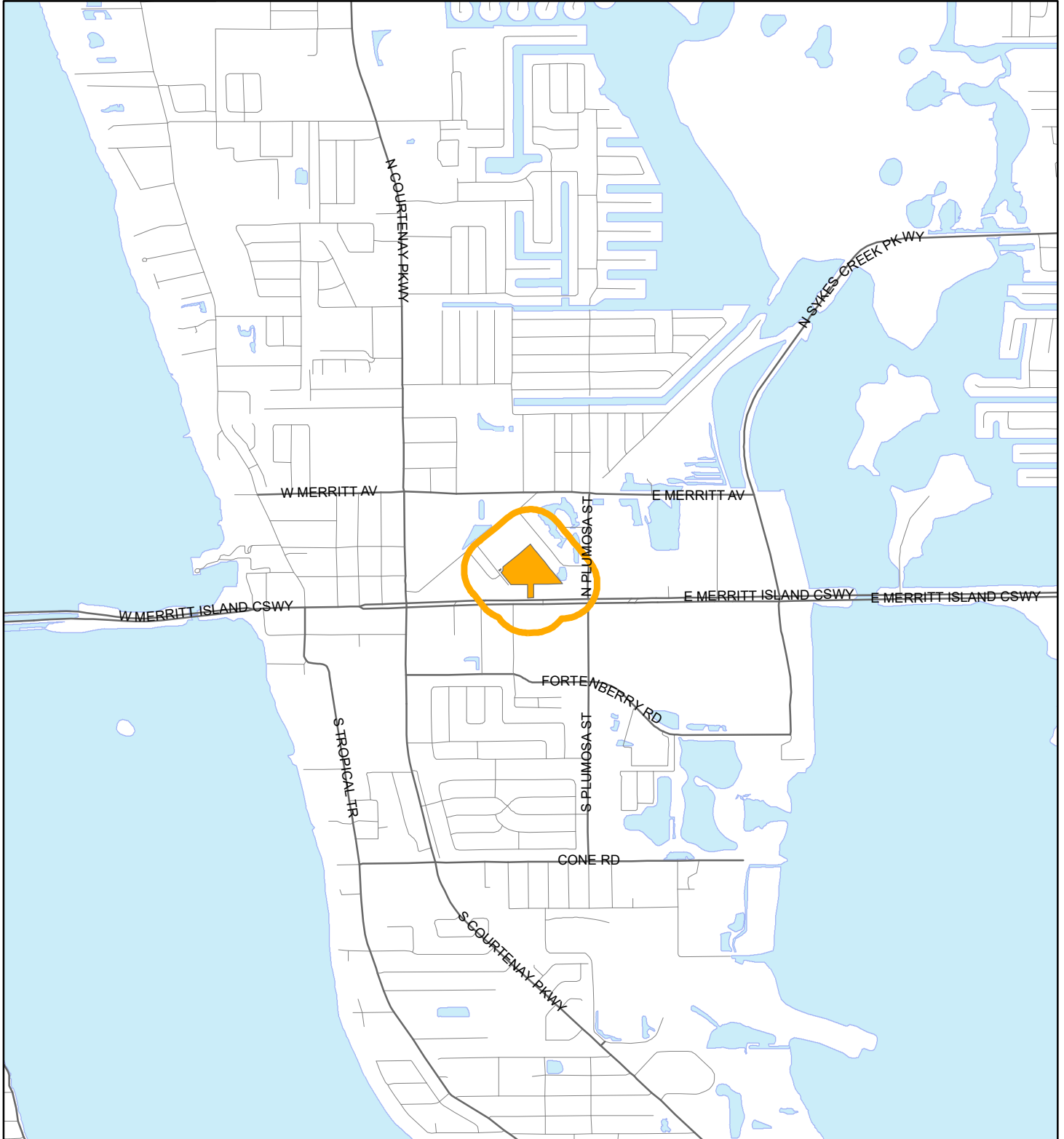


LOCATION MAP

JAY SRIAMBE LLC
24Z00066





1:24,000 or 1 inch = 2,000 feet

Buffer Distance: 500 feet

This map was compiled from recorded documents and does not reflect an actual survey. The Brevard County Board of County Commissioners does not assume responsibility for errors or omissions hereon.

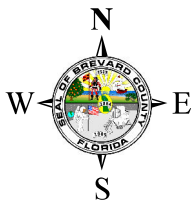
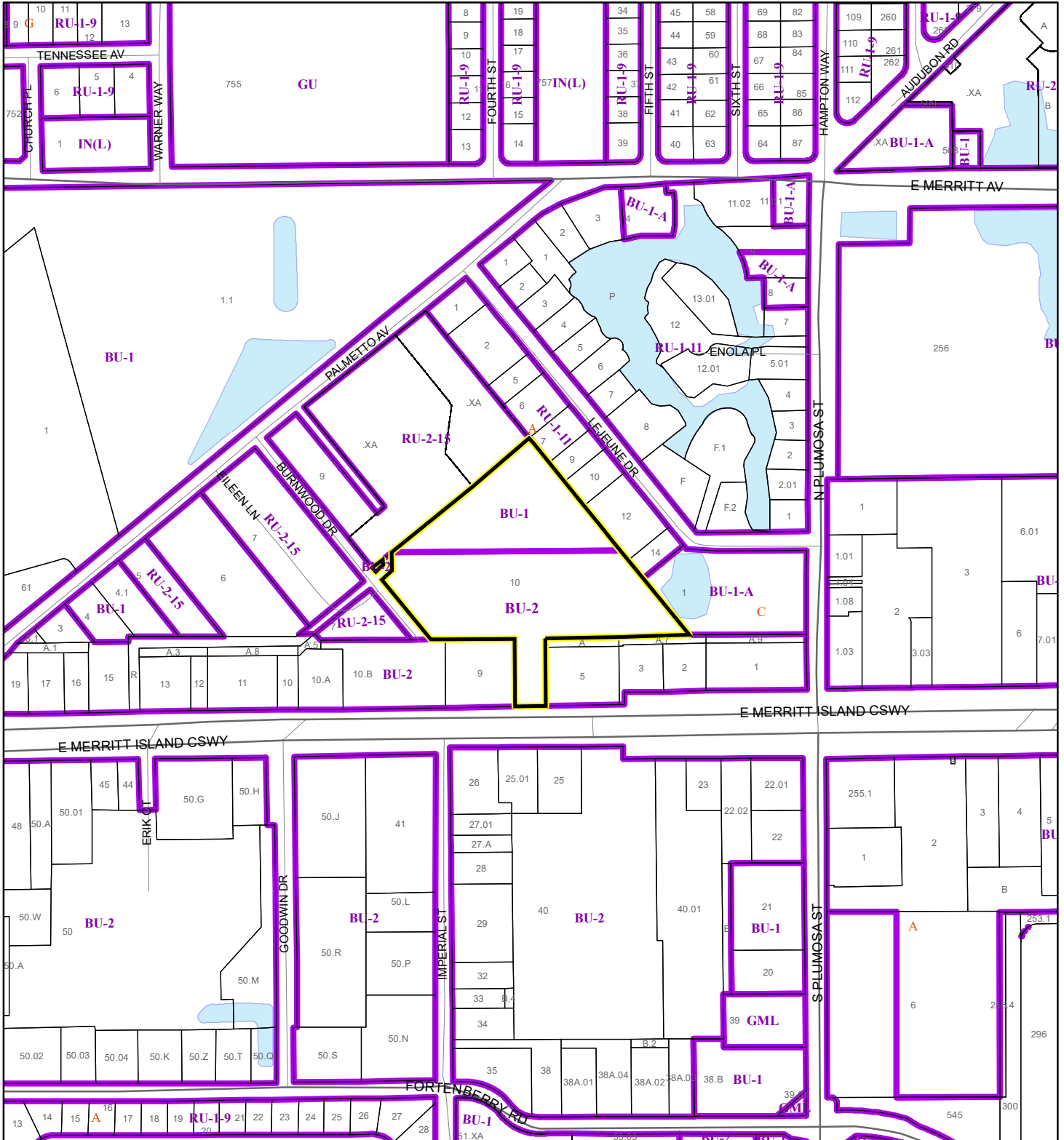
Produced by BoCC - GIS Date: 12/19/2024

-  Buffer
-  Subject Property


ZONING MAP

JAY SRIAMBE LLC

24Z00066



1:4,800 or 1 inch = 400 feet

 Subject Property

 Parcels

 Zoning

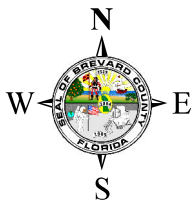
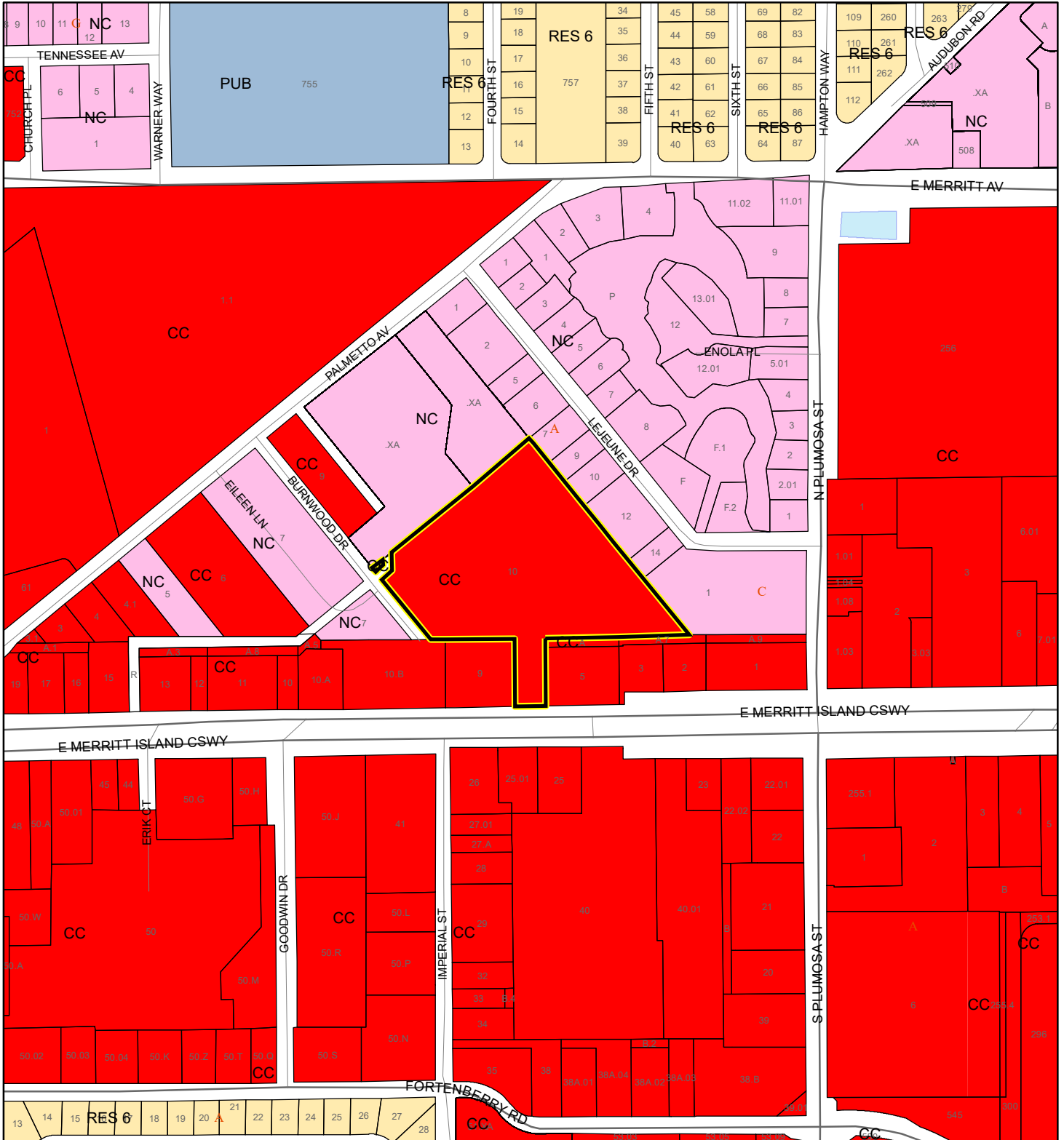
This map was compiled from recorded documents and does not reflect an actual survey. The Brevard County Board of County Commissioners does not assume responsibility for errors or omissions hereon.

Produced by BoCC - GIS Date: 12/19/2024



FUTURE LAND USE MAP

JAY SRIAMBE LLC

24Z00066



1:4,800 or 1 inch = 400 feet

 Subject Property
 Parcels

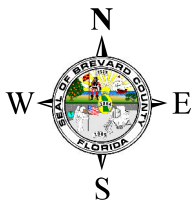
This map was compiled from recorded documents and does not reflect an actual survey. The Brevard County Board of County Commissioners does not assume responsibility for errors or omissions hereon.

Produced by BoCC - GIS Date: 12/19/2024

AERIAL MAP

JAY SRIAMBE LLC

24Z00066




1:2,400 or 1 inch = 200 feet

PHOTO YEAR: 2024

This map was compiled from recorded documents and does not reflect an actual survey. The Brevard County Board of County Commissioners does not assume responsibility for errors or omissions hereon.

Produced by BoCC - GIS Date: 12/19/2024

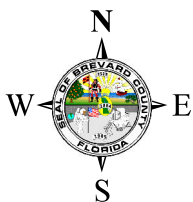
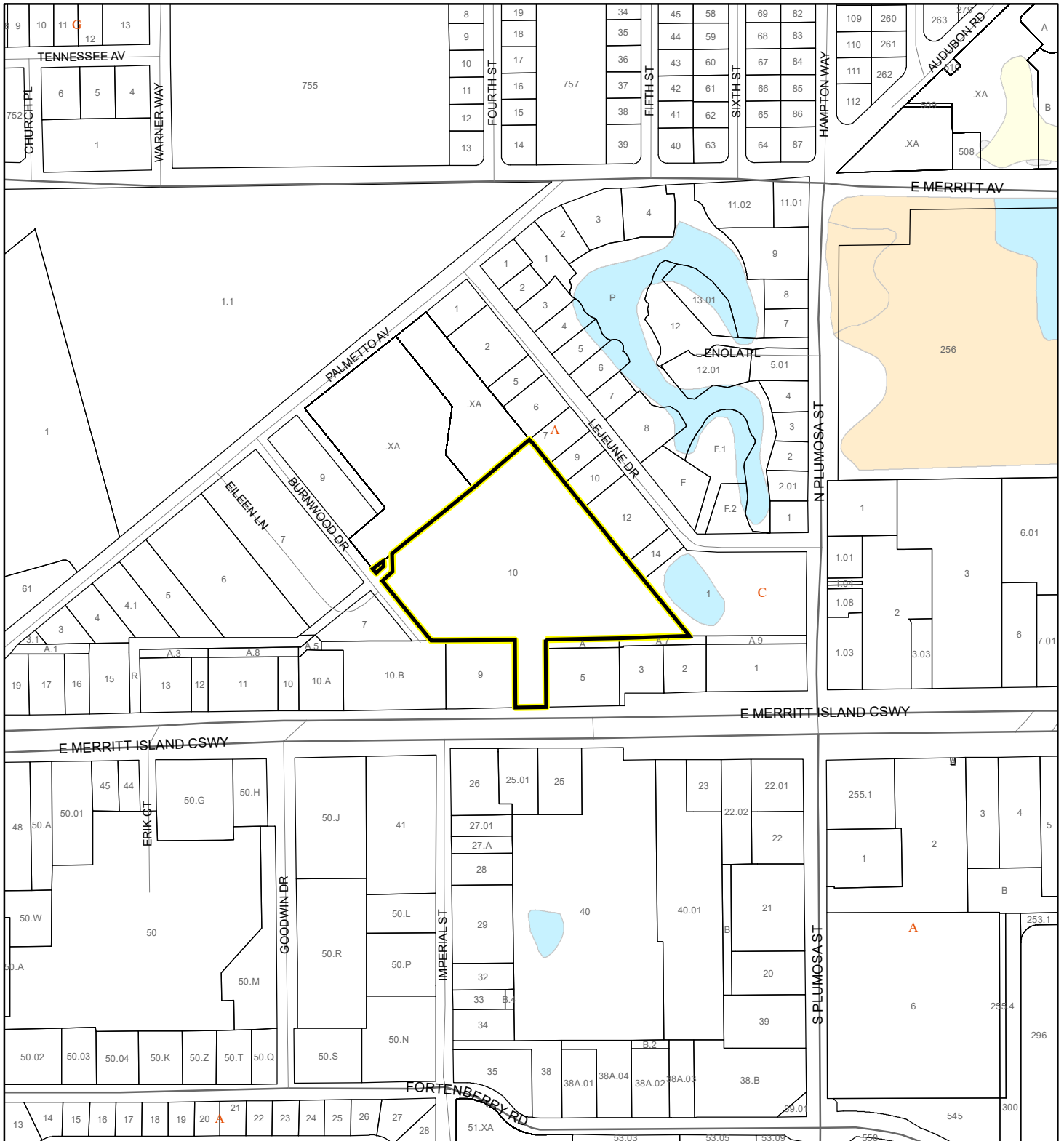
 Subject Property

 Parcels

NWI WETLANDS MAP

JAY SRIAMBE LLC

24Z00066



1:4,800 or 1 inch = 400 feet

National Wetlands Inventory (NWI)

- Estuarine and Marine Deepwater
- Freshwater Pond
- Estuarine and Marine Wetland
- Lake
- Freshwater Emergent Wetland
- Other
- Freshwater Forested/Shrub Wetland
- Riverine
- Subject Property
- Parcels

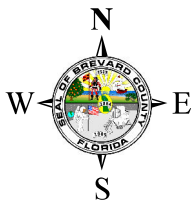
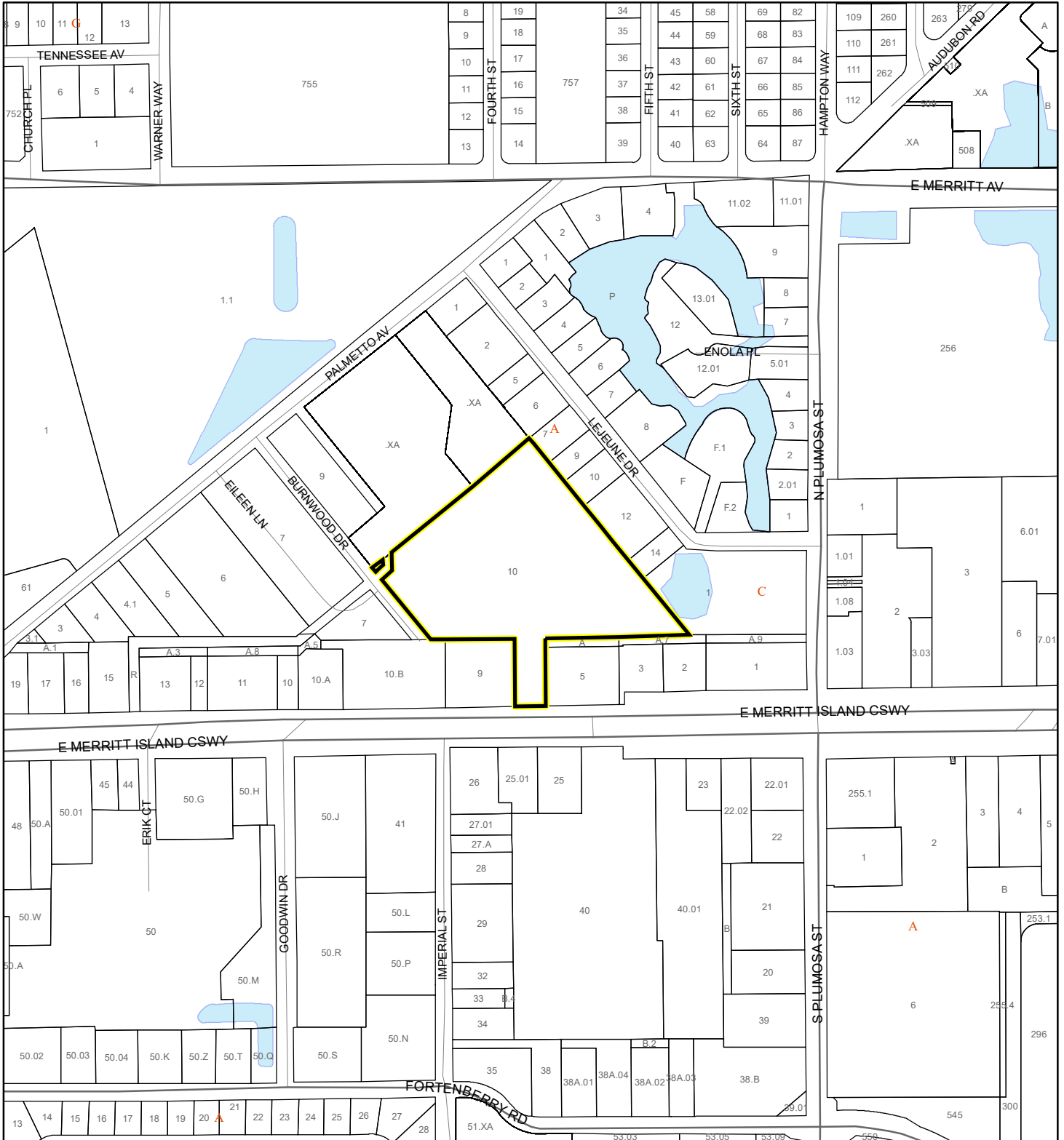
This map was compiled from recorded documents and does not reflect an actual survey. The Brevard County Board of County Commissioners does not assume responsibility for errors or omissions hereon.

Produced by BoCC - GIS Date: 12/19/2024

SJRWMD FLUCCS WETLANDS - 6000 Series MAP

JAY SRIAMBE LLC

24Z00066



1:4,800 or 1 inch = 400 feet

This map was compiled from recorded documents and does not reflect an actual survey. The Brevard County Board of County Commissioners does not assume responsibility for errors or omissions hereon.

Produced by BoCC - GIS Date: 12/19/2024

SJRWMD FLUCCS WETLANDS

- Wetland Hardwood Forests - Series 6100
- Wetland Coniferous Forest - Series 6200
- Wetland Forested Mixed - Series 6300
- Vegetated Non-Forested Wetlands - Series 6400
- Non-Vegetated Wetland - Series 6500

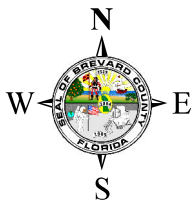
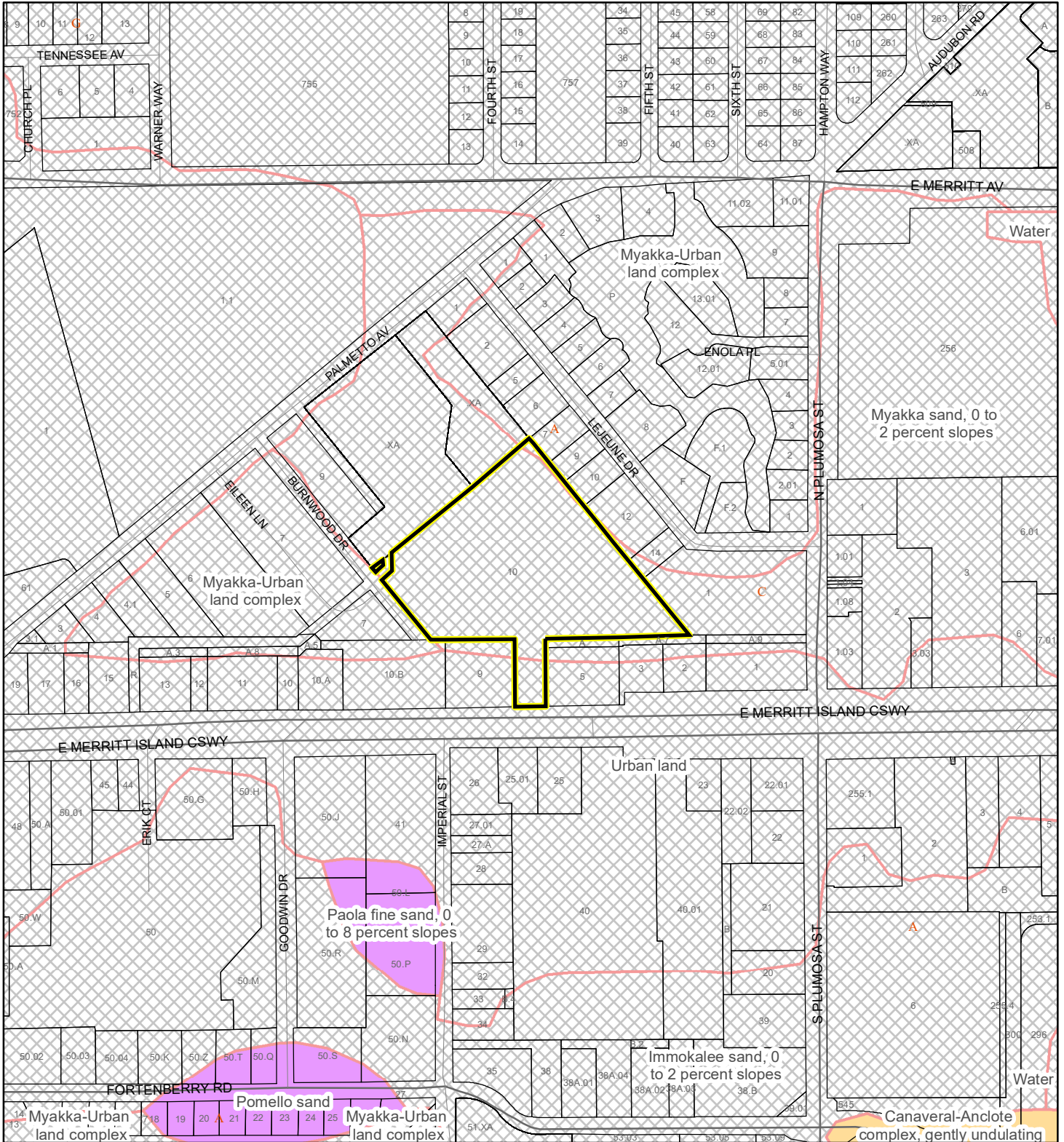
Subject Property

Parcels

USDA SCSSS SOILS MAP

JAY SRIAMBE LLC

24Z00066



1:4,800 or 1 inch = 400 feet

USDA SCSSS Soils

- Aquifer and Hydric
- Aquifer
- Hydric
- None

- Subject Property
- Parcels

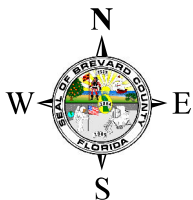
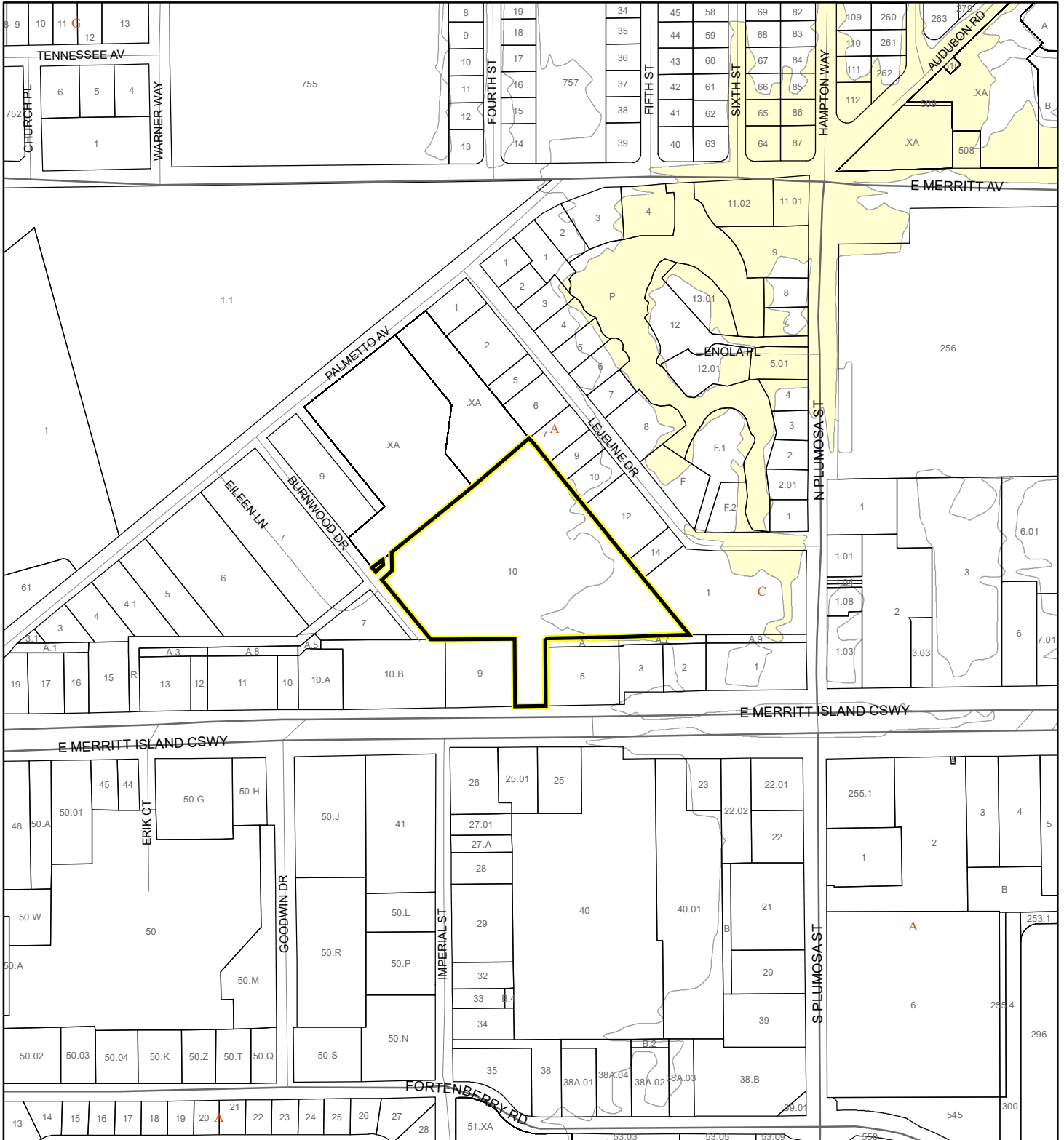
This map was compiled from recorded documents and does not reflect an actual survey. The Brevard County Board of County Commissioners does not assume responsibility for errors or omissions hereon.

Produced by BoCC - GIS Date: 12/19/2024

FEMA FLOOD ZONES MAP

JAY SRIAMBE LLC

24Z00066



1:4,800 or 1 inch = 400 feet

This map was compiled from recorded documents and does not reflect an actual survey. The Brevard County Board of County Commissioners does not assume responsibility for errors or omissions hereon.

Produced by BoCC - GIS Date: 12/19/2024

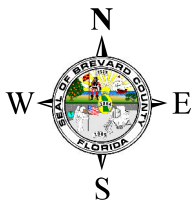
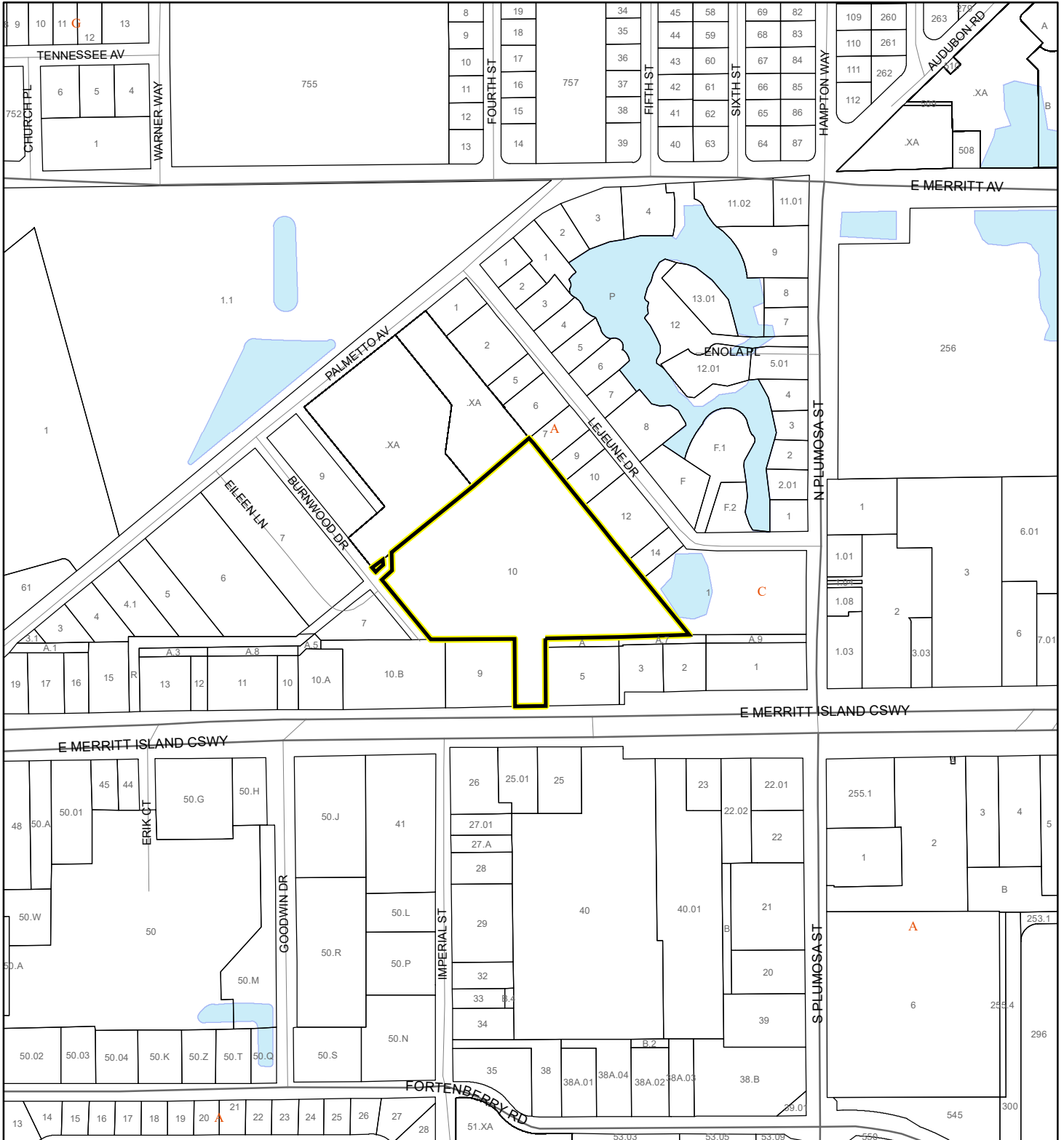
FEMA Flood Zones

- | | | |
|------------------|------------|---|
| A | AO | X |
| AE | Open Water | |
| AH | VE | |
| Subject Property | Parcels | |

COASTAL HIGH HAZARD AREA MAP

JAY SRIAMBE LLC

24Z00066



1:4,800 or 1 inch = 400 feet


This map was compiled from recorded documents and does not reflect an actual survey. The Brevard County Board of County Commissioners does not assume responsibility for errors or omissions hereon.

Produced by BoCC - GIS Date: 12/19/2024

 Subject Property

 Parcels

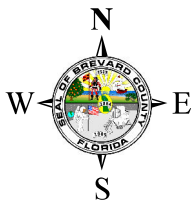
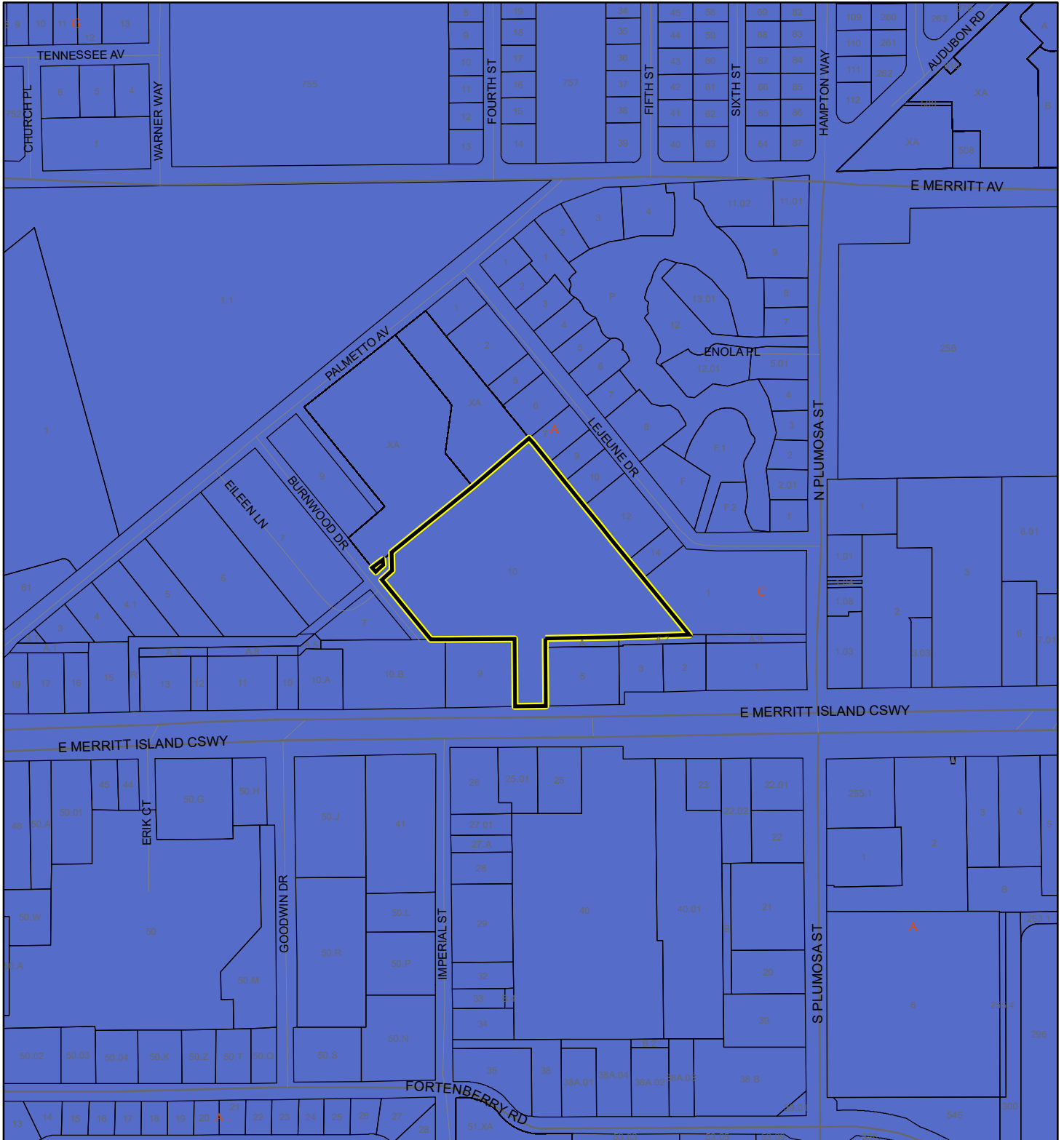
Coastal High Hazard Area

 SurgeZoneCat1

INDIAN RIVER LAGOON SEPTIC OVERLAY MAP

JAY SRIAMBE LLC

24Z00066



1:4,800 or 1 inch = 400 feet

This map was compiled from recorded documents and does not reflect an actual survey. The Brevard County Board of County Commissioners does not assume responsibility for errors or omissions herein.

Produced by BoCC - GIS Date: 12/19/2024


 Subject Property

 Parcels

Septic Overlay

 40 Meters

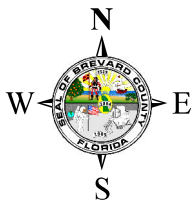
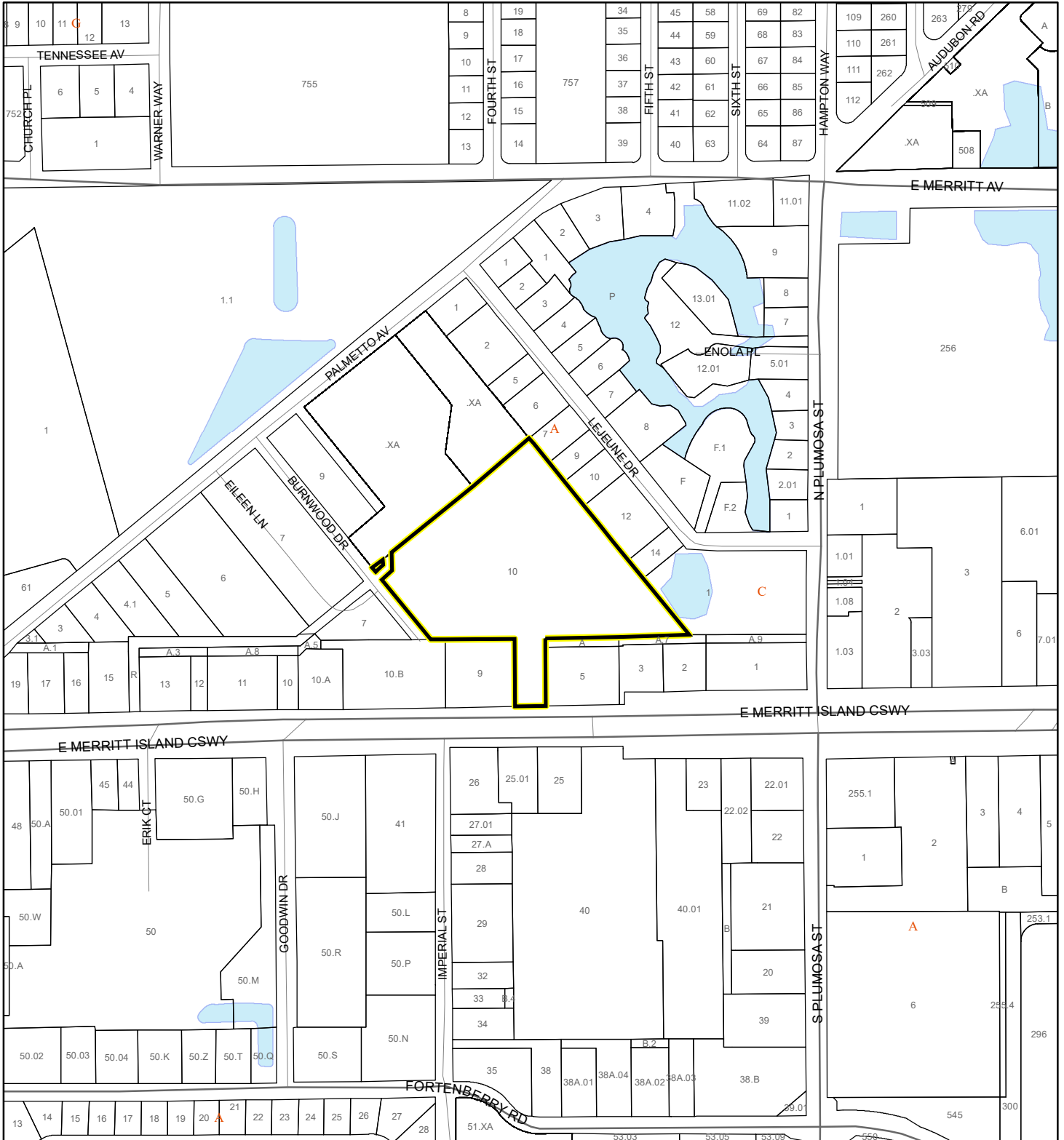
 60 Meters

 All Distances

EAGLE NESTS MAP

JAY SRIAMBE LLC

24Z00066



1:4,800 or 1 inch = 400 feet

 Subject Property

 Parcels

 Eagle Nests
FWS

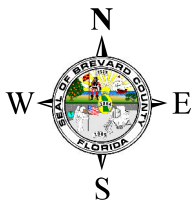
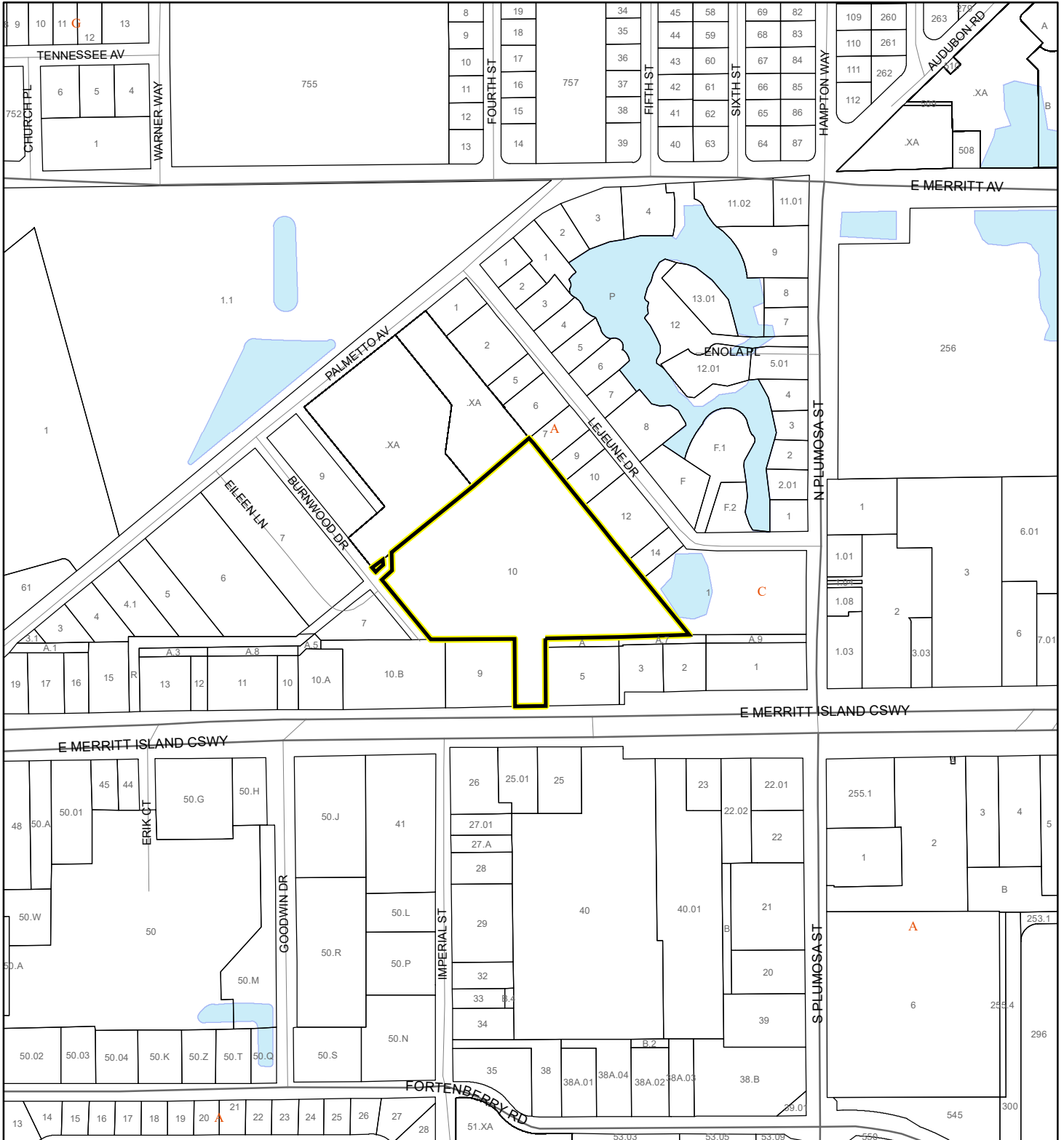
This map was compiled from recorded documents and does not reflect an actual survey. The Brevard County Board of County Commissioners does not assume responsibility for errors or omissions herein.

Produced by BoCC - GIS Date: 12/19/2024




SCRUB JAY OCCUPANCY MAP

JAY SRIAMBE LLC

24Z00066



1:4,800 or 1 inch = 400 feet

-  Subject Property
-  Parcels
-  Scrub Jay Occupancy

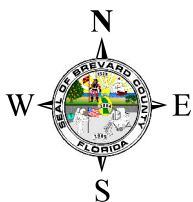
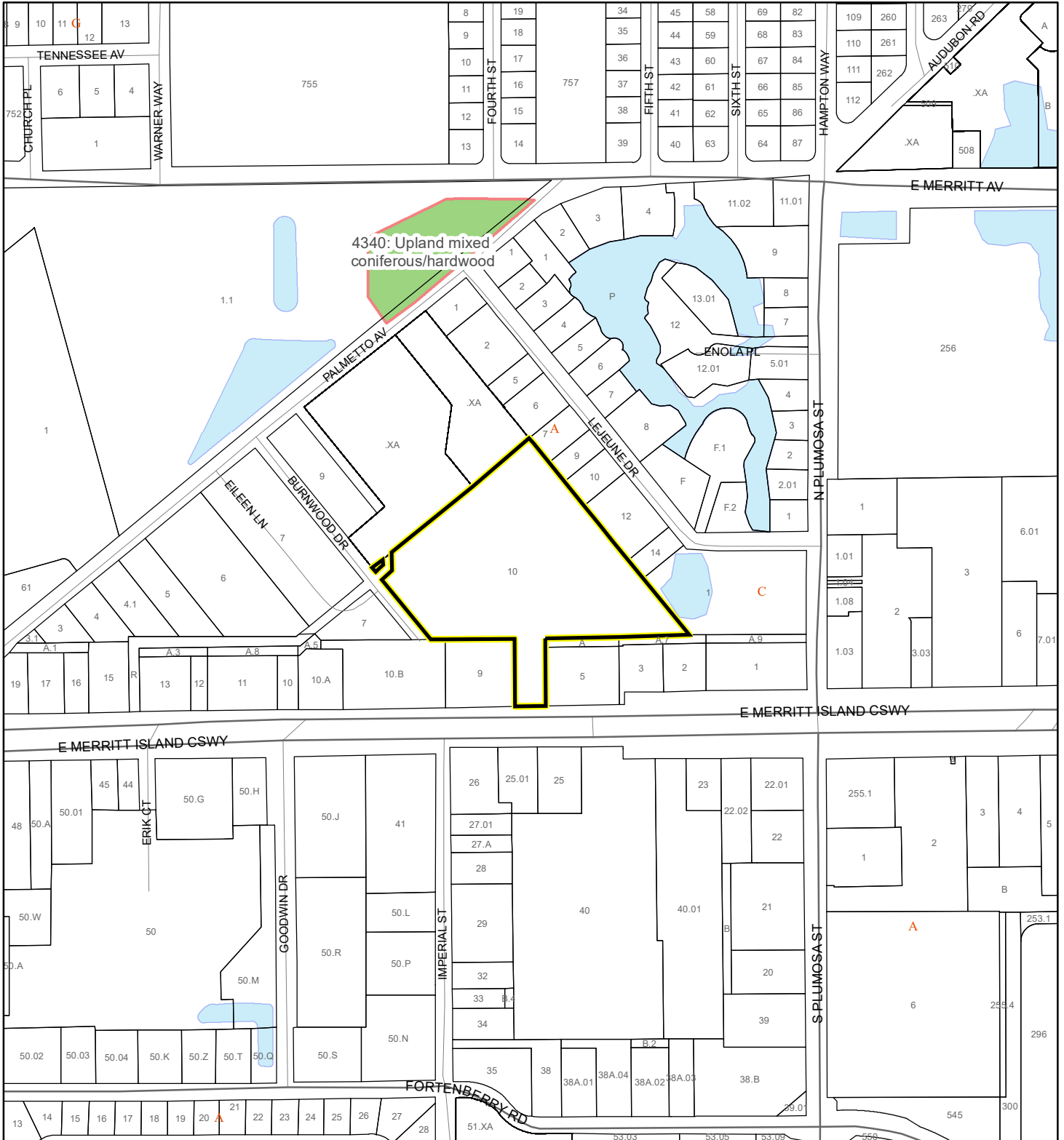
This map was compiled from recorded documents and does not reflect an actual survey. The Brevard County Board of County Commissioners does not assume responsibility for errors or omissions hereon.

Produced by BoCC - GIS Date: 12/19/2024

SJRWMD FLUCCS UPLAND FORESTS - 4000 Series MAP

JAY SRIAMBE LLC

24Z00066



1:4,800 or 1 inch = 400 feet

SJRWMD FLUCCS Upland Forests

- Upland Coniferous Forest - 4100 Series
- Upland Hardwood Forest - 4200 Series
- Upland Mixed Forest - 4300 Series
- Tree Plantations - 4400 Series

This map was compiled from recorded documents and does not reflect an actual survey. The Brevard County Board of County Commissioners does not assume responsibility for errors or omissions hereon.

Produced by BoCC - GIS Date: 12/19/2024

Subject Property Parcels