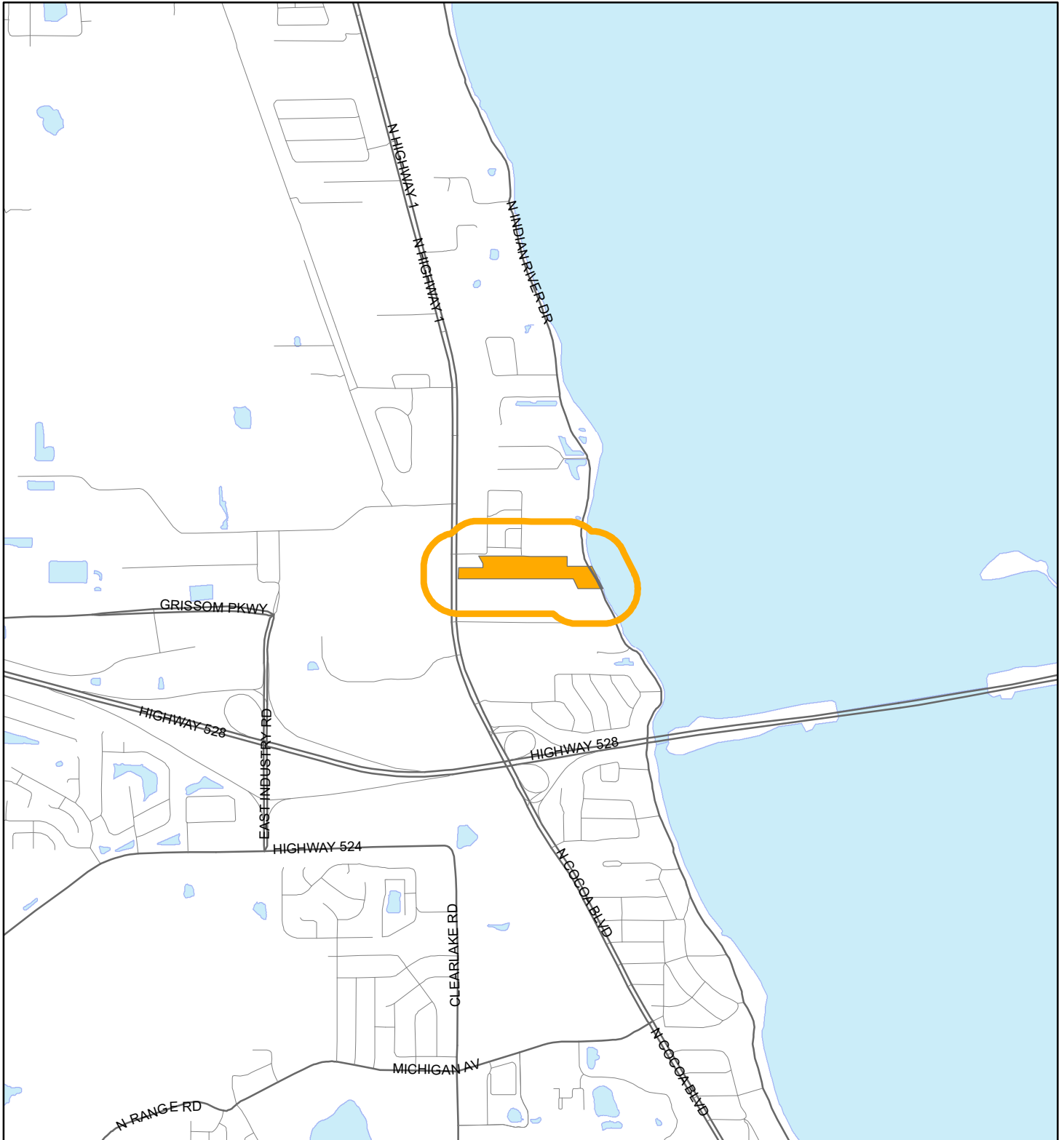


LOCATION MAP

CITY POINT LANDFALL LLC

24PUD00003





1:24,000 or 1 inch = 2,000 feet

Buffer Distance: 500 feet

This map was compiled from recorded documents and does not reflect an actual survey. The Brevard County Board of County Commissioners does not assume responsibility for errors or omissions hereon.

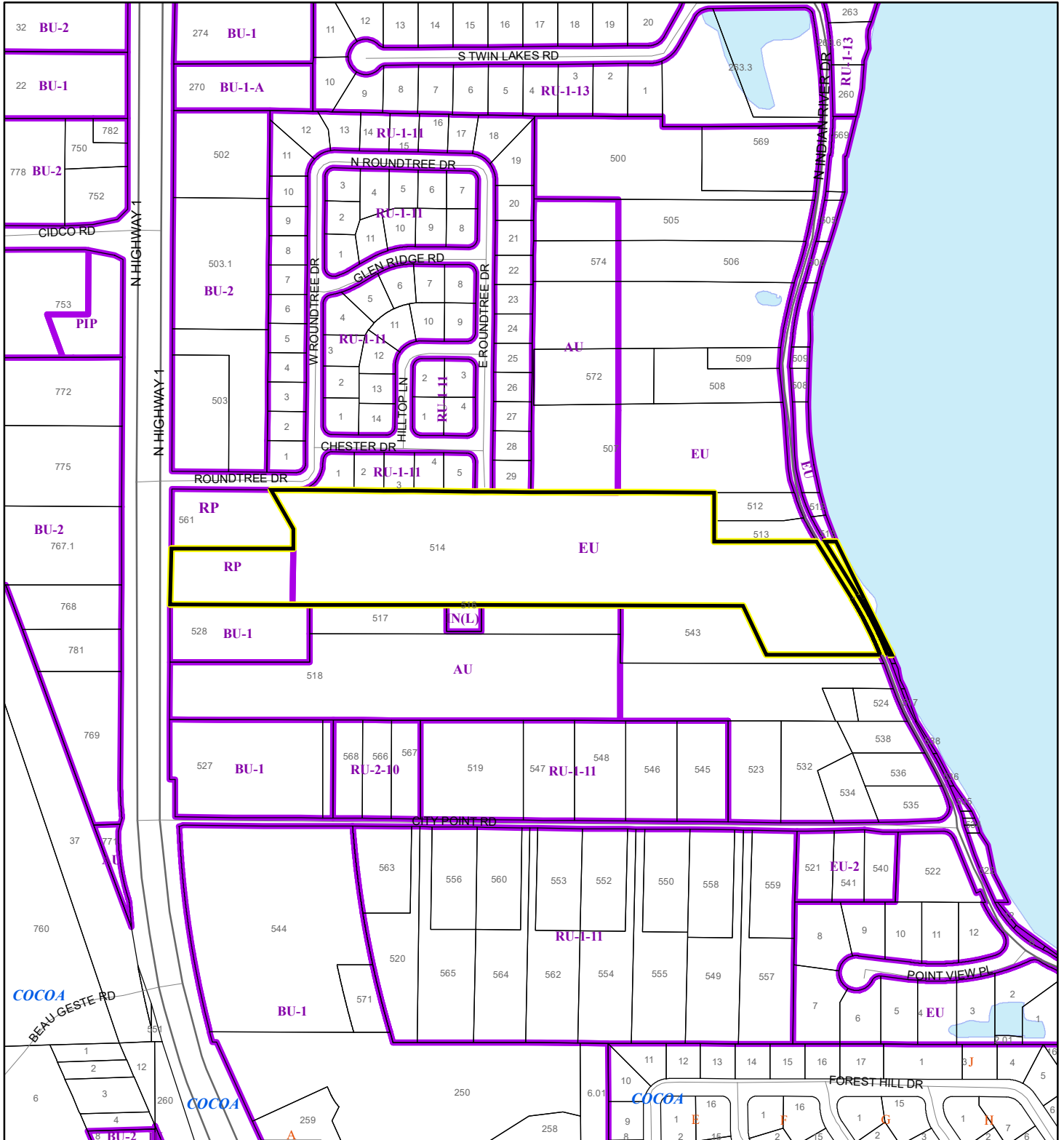
Produced by BoCC - GIS Date: 7/16/2024

-  Buffer
-  Subject Property


ZONING MAP

CITY POINT LANDFALL LLC

24PUD00003



1:4,800 or 1 inch = 400 feet

 Subject Property

 Parcels

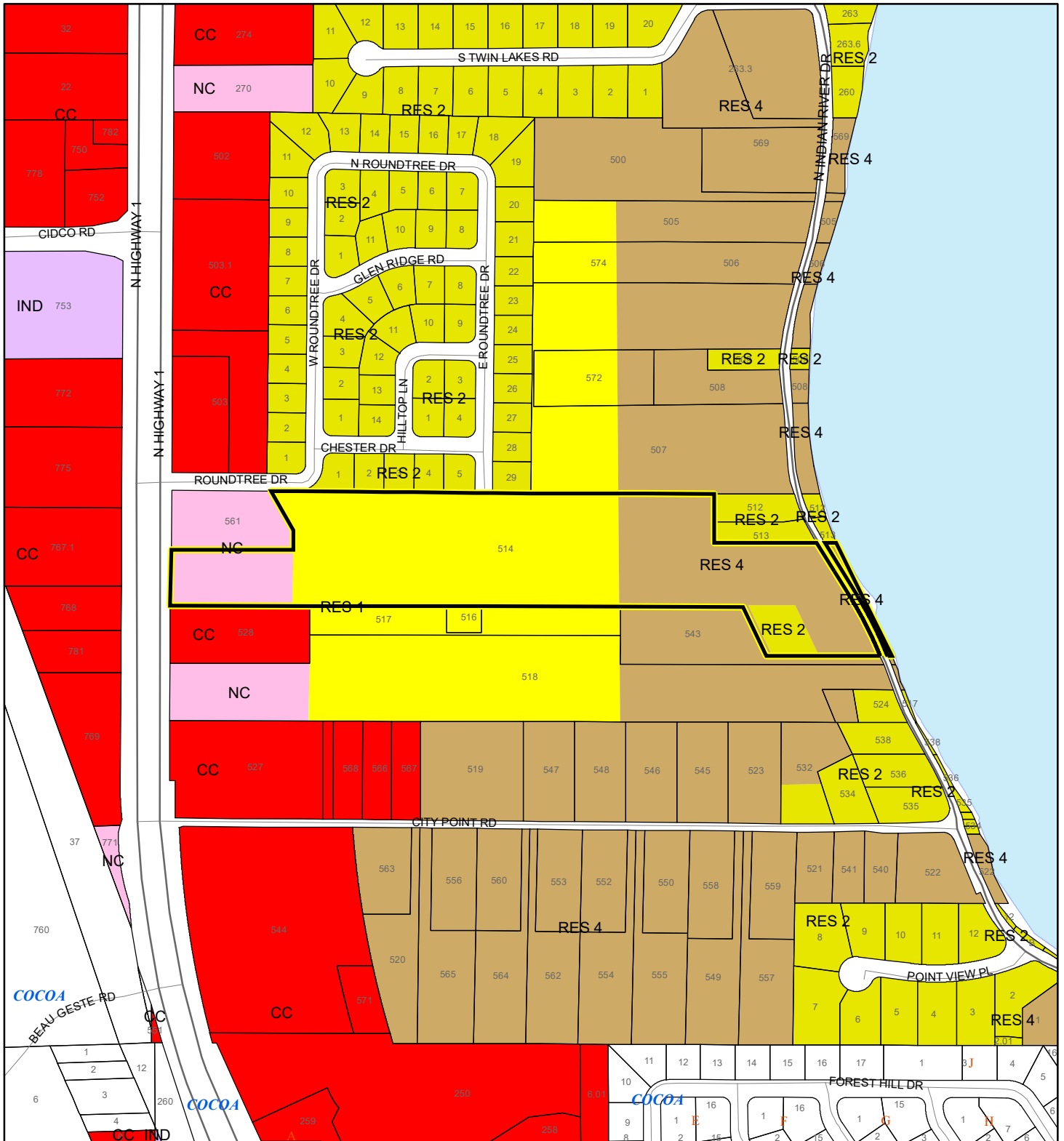
 Zoning

This map was compiled from recorded documents and does not reflect an actual survey. The Brevard County Board of County Commissioners does not assume responsibility for errors or omissions hereon.

Produced by BoCC - GIS Date: 7/16/2024

FUTURE LAND USE MAP

CITY POINT LANDFALL LLC
24PUD00003



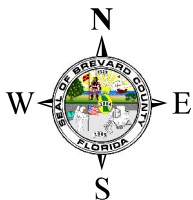
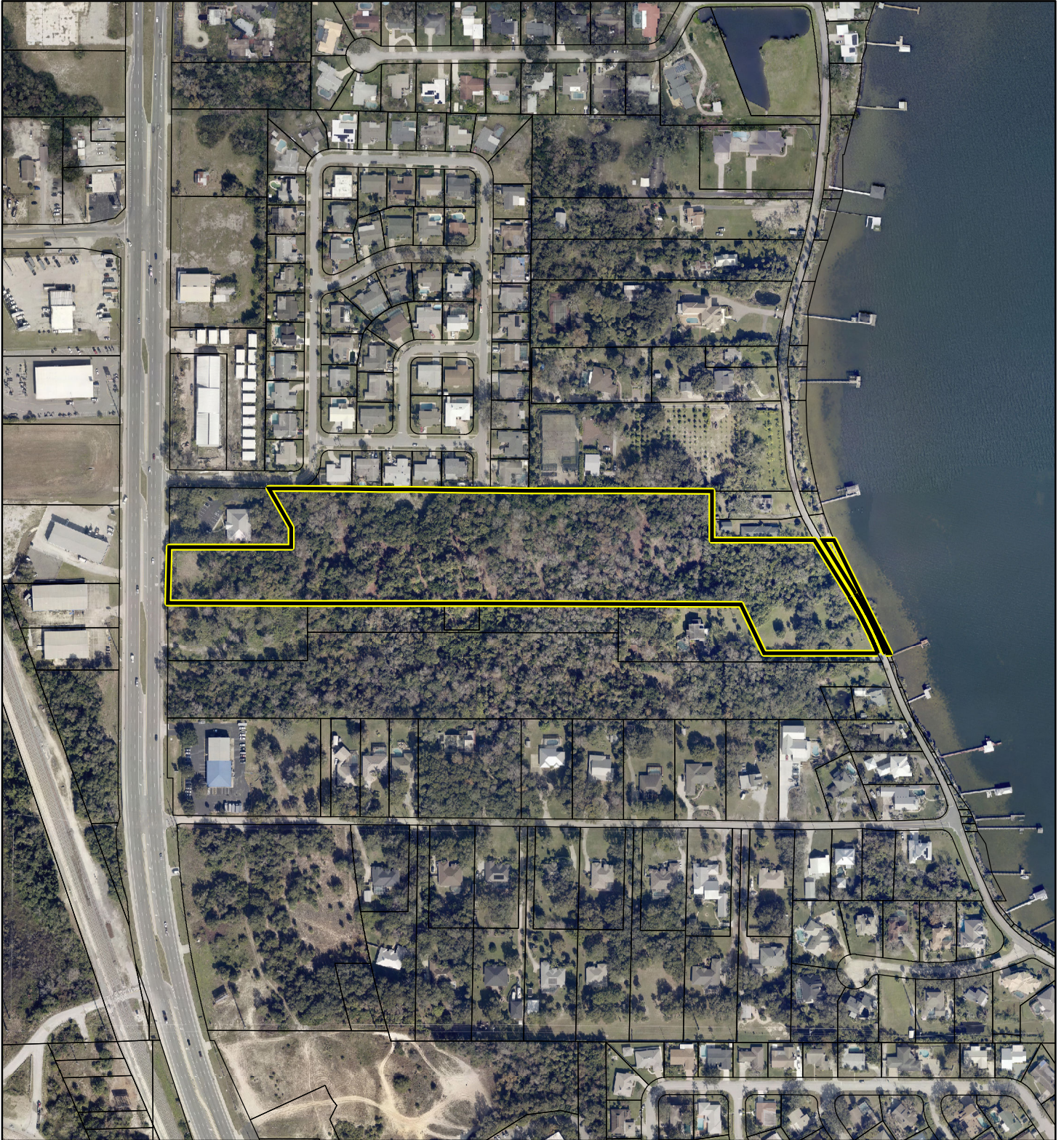
1:4,800 or 1 inch = 400 feet

Subject Property
Parcels

This map was compiled from recorded documents and does not reflect an actual survey. The Brevard County Board of County Commissioners does not assume responsibility for errors or omissions hereon.

Produced by BoCC - GIS Date: 7/16/2024

AERIAL MAP
CITY POINT LANDFALL LLC
24PUD00003





1:4,800 or 1 inch = 400 feet

PHOTO YEAR: 2024

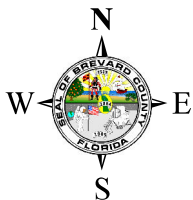
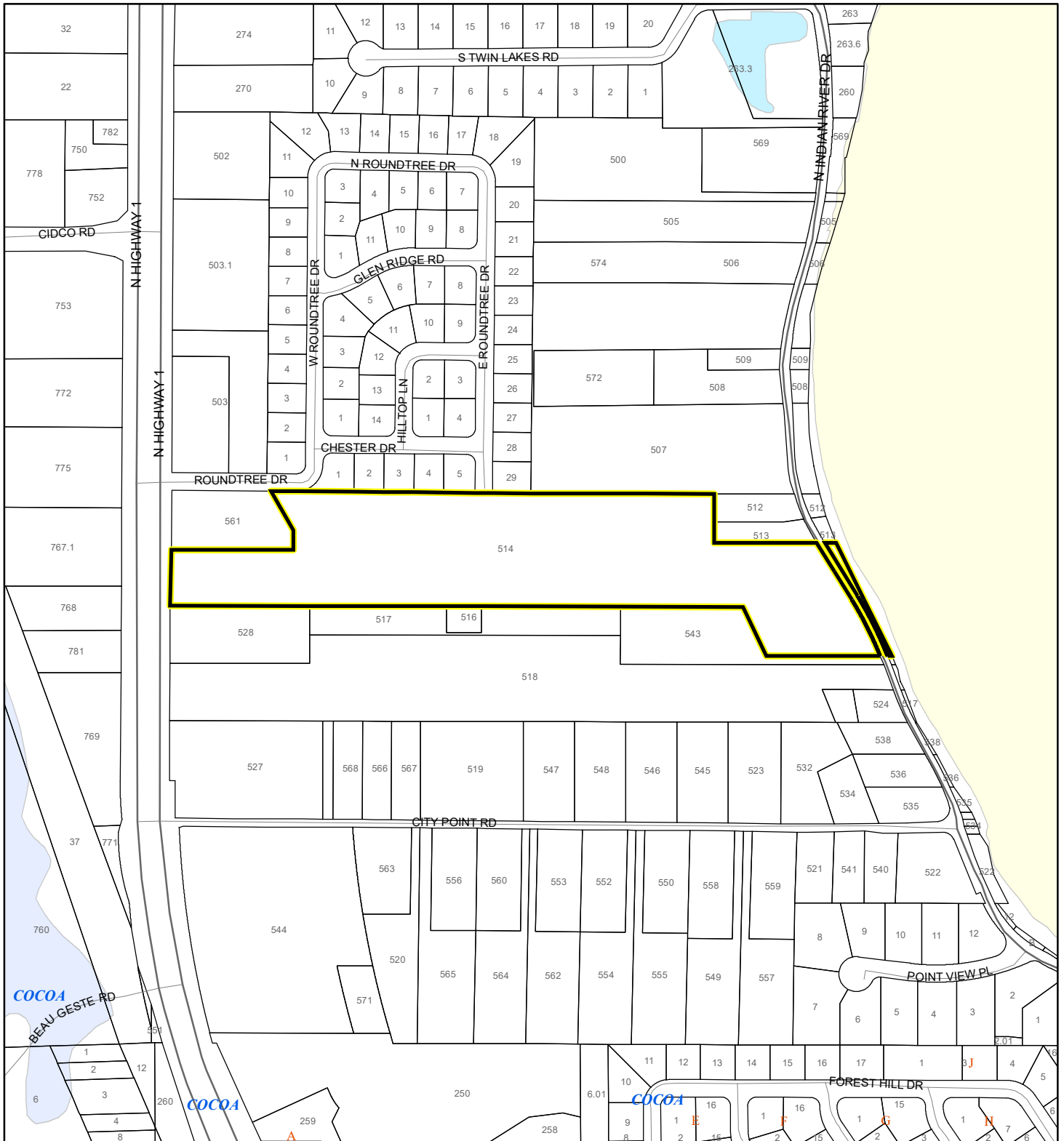
This map was compiled from recorded documents and does not reflect an actual survey. The Brevard County Board of County Commissioners does not assume responsibility for errors or omissions hereon.

Produced by BoCC - GIS Date: 7/16/2024

 Subject Property
 Parcels











NWI WETLANDS MAP

CITY POINT LANDFALL LLC
24PUD00003



1:4,800 or 1 inch = 400 feet

National Wetlands Inventory (NWI)

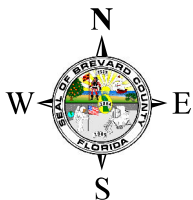
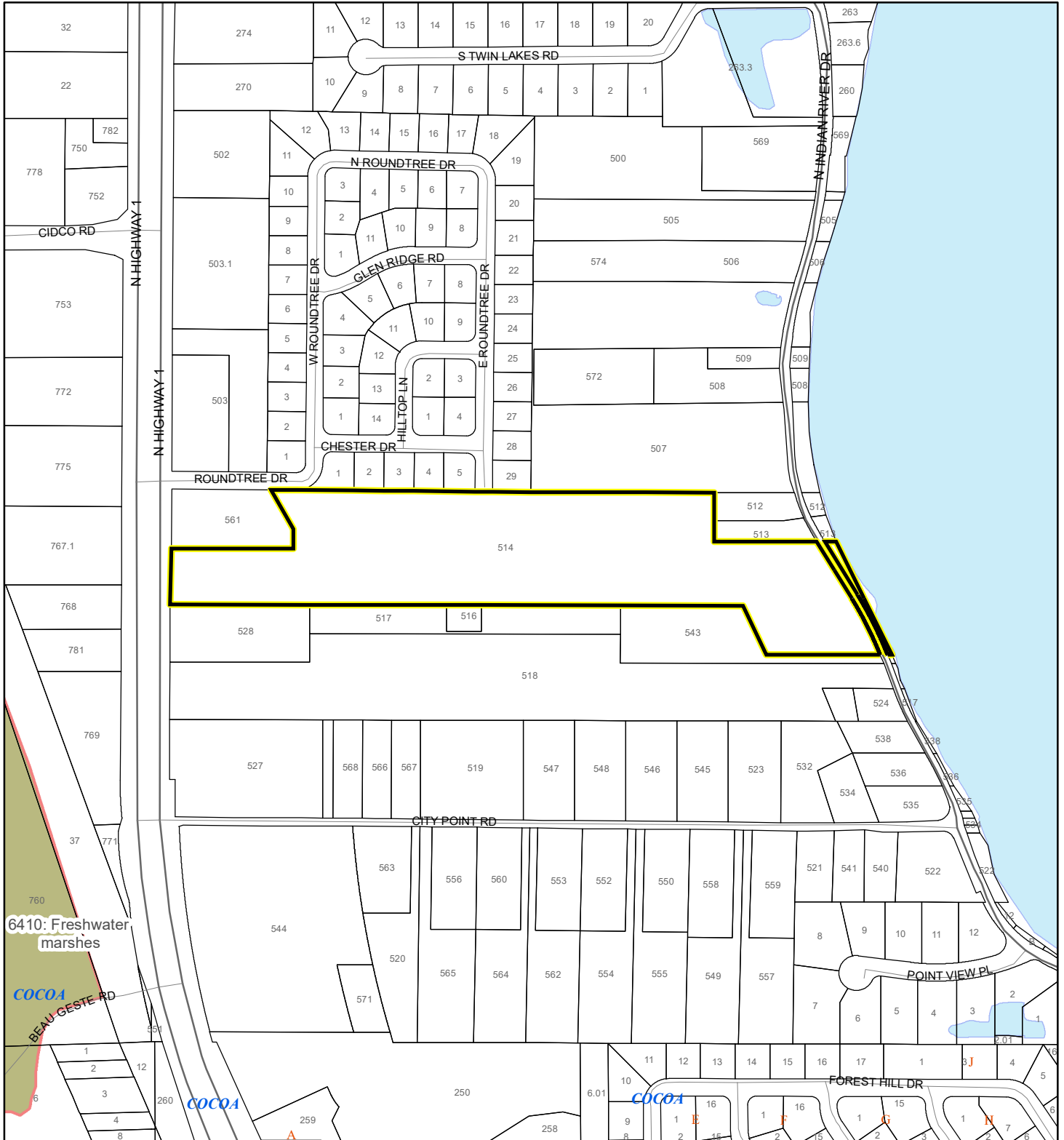
- | | |
|--|--|
|  Estuarine and Marine Deepwater |  Freshwater Pond |
|  Estuarine and Marine Wetland |  Lake |
|  Freshwater Emergent Wetland |  Other |
|  Freshwater Forested/Shrub Wetland |  Riverine |
| |  Subject Property |
| |  Parcels |

This map was compiled from recorded documents and does not reflect an actual survey. The Brevard County Board of County Commissioners does not assume responsibility for errors or omissions hereon.

Produced by BoCC - GIS Date: 7/16/2024

SJRWMD FLUCCS WETLANDS - 6000 Series MAP

CITY POINT LANDFALL LLC
24PUD00003



1:4,800 or 1 inch = 400 feet

This map was compiled from recorded documents and does not reflect an actual survey. The Brevard County Board of County Commissioners does not assume responsibility for errors or omissions hereon.

Produced by BoCC - GIS Date: 7/16/2024

SJRWMD FLUCCS WETLANDS

- Wetland Hardwood Forests - Series 6100
- Wetland Coniferous Forest - Series 6200
- Wetland Forested Mixed - Series 6300
- Vegetated Non-Forested Wetlands - Series 6400
- Non-Vegetated Wetland - Series 6500

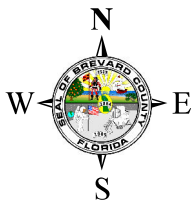
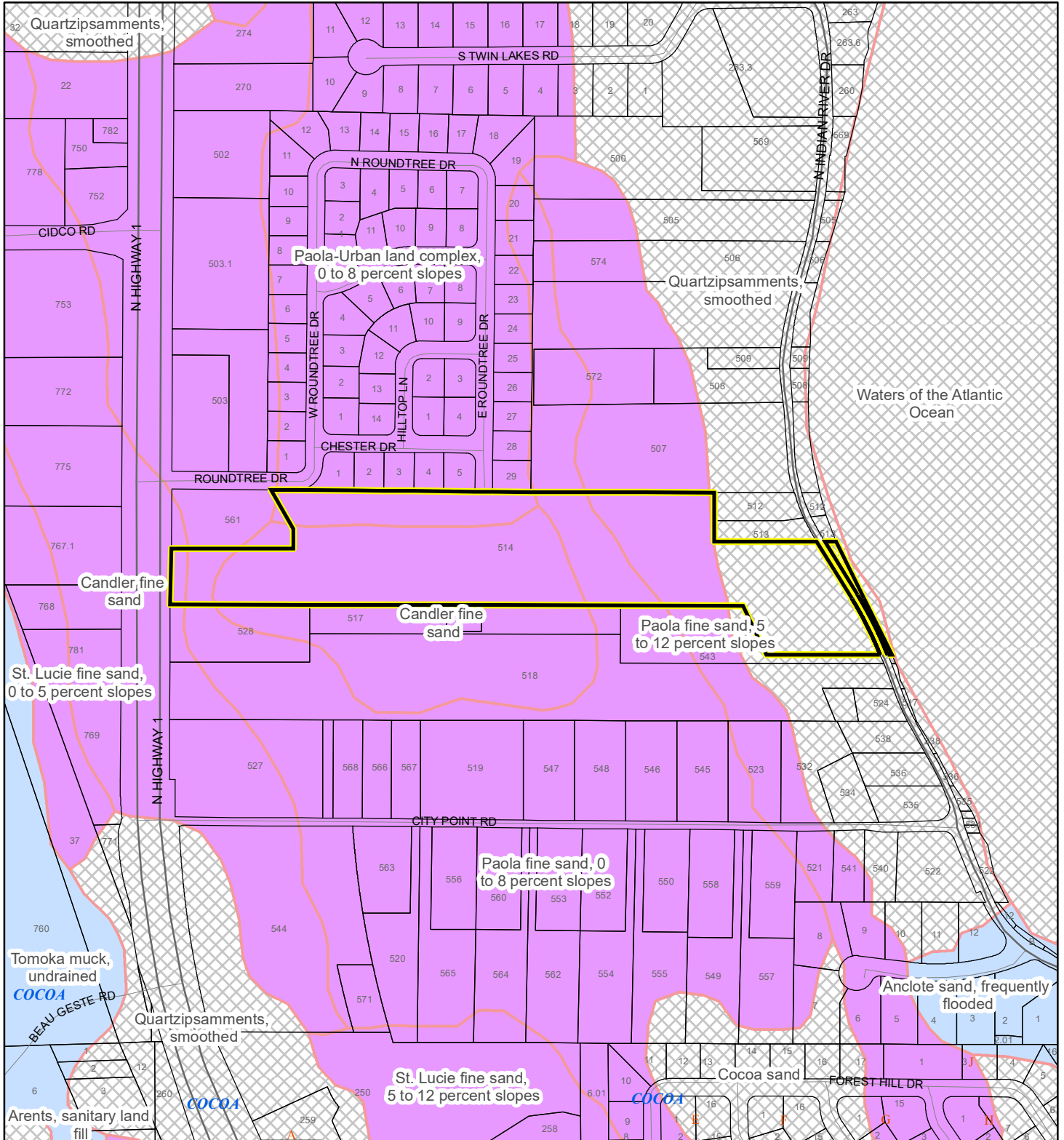
Subject Property

Parcels

USDA SCSSS SOILS MAP

CITY POINT LANDFALL LLC

24PUD00003



1:4,800 or 1 inch = 400 feet

USDA SCSSS Soils

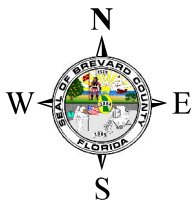
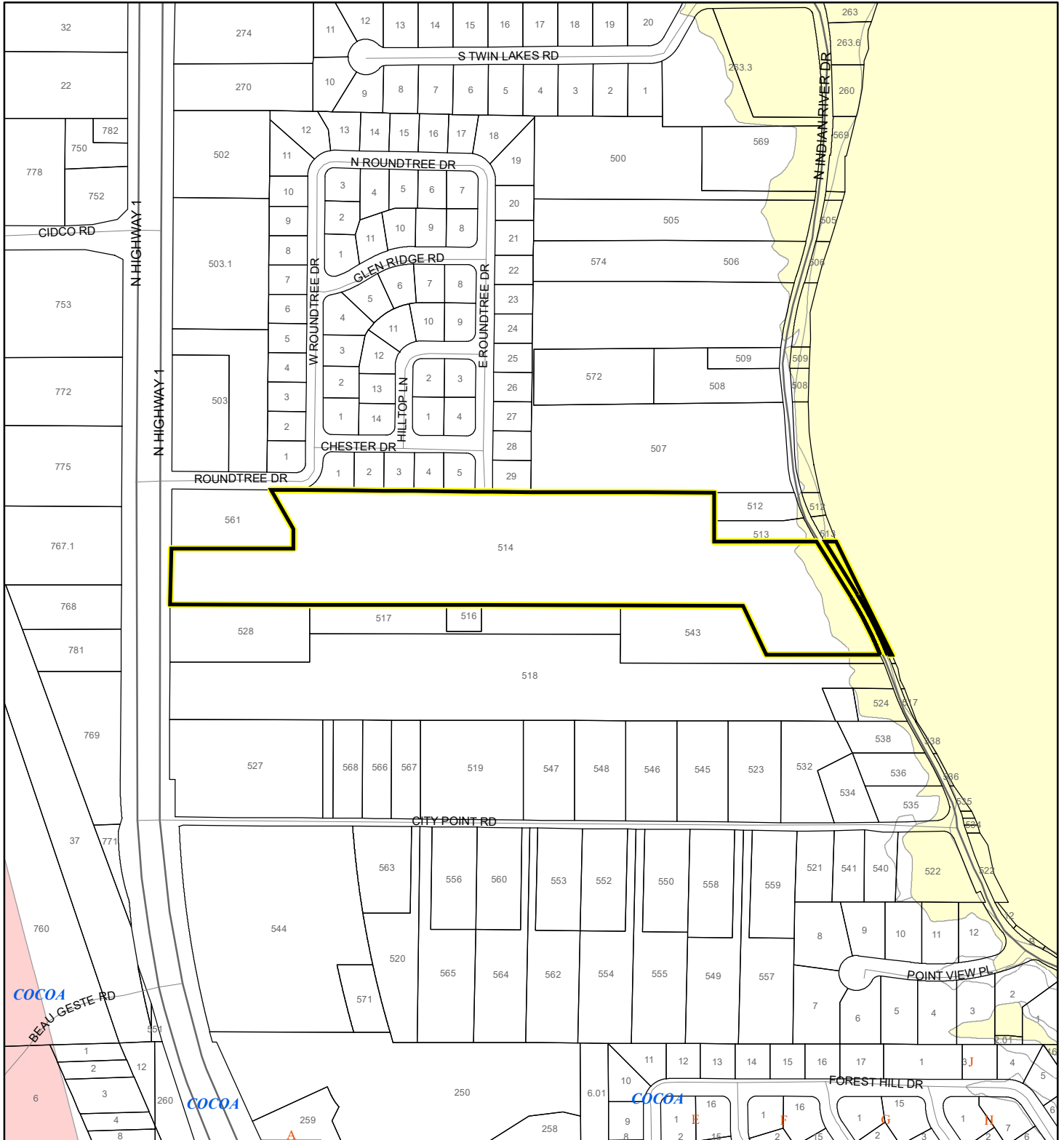
- Aquifer and Hydric
- Aquifer
- Hydric
- None
- Subject Property
- Parcels

This map was compiled from recorded documents and does not reflect an actual survey. The Brevard County Board of County Commissioners does not assume responsibility for errors or omissions hereon.

Produced by BoCC - GIS Date: 7/16/2024

FEMA FLOOD ZONES MAP

CITY POINT LANDFALL LLC
24PUD00003



1:4,800 or 1 inch = 400 feet

This map was compiled from recorded documents and does not reflect an actual survey. The Brevard County Board of County Commissioners does not assume responsibility for errors or omissions hereon.

Produced by BoCC - GIS Date: 7/16/2024

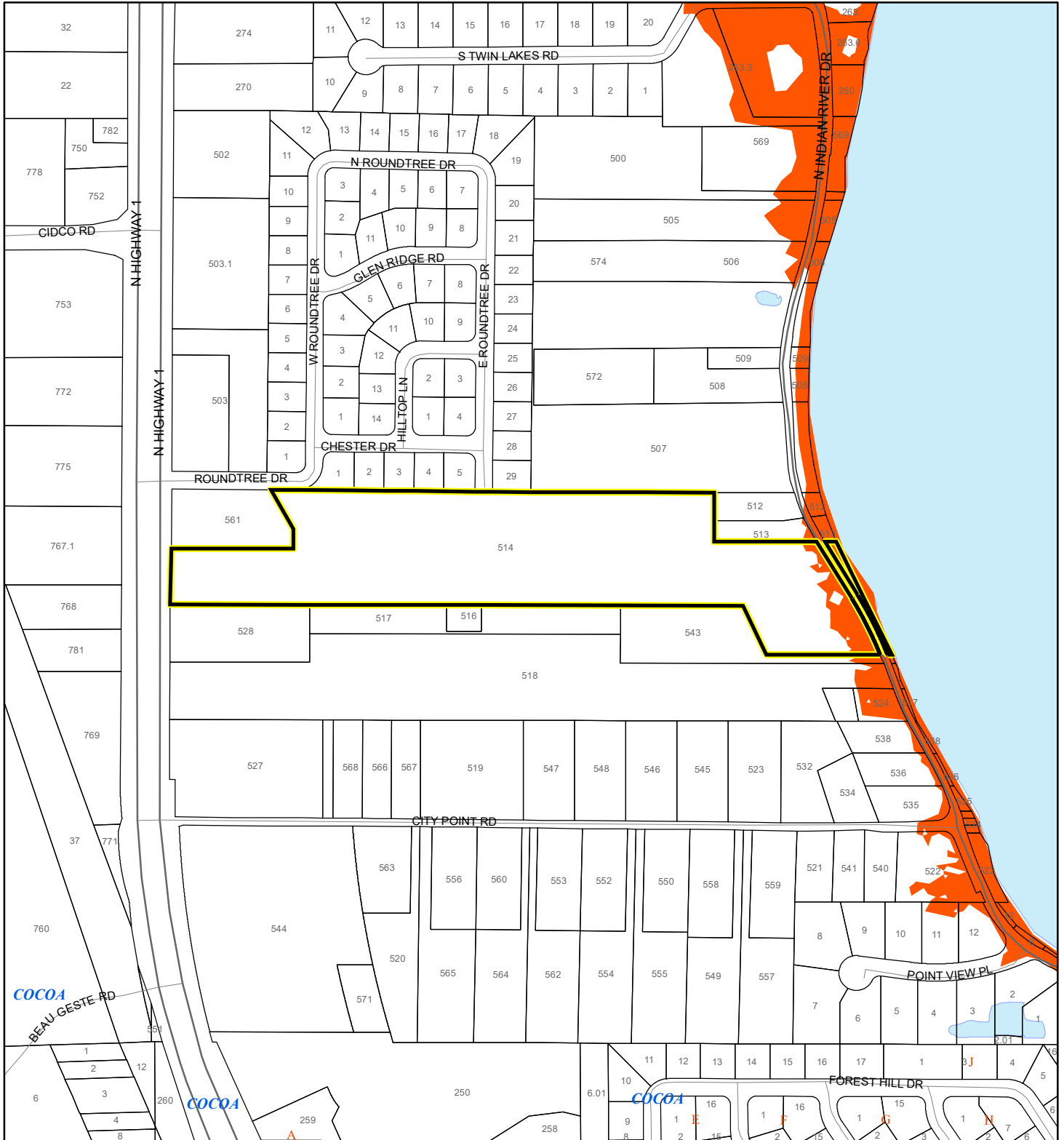
FEMA Flood Zones

- | | | |
|------------------|------------|---|
| A | AO | X |
| AE | Open Water | |
| AH | VE | |
| Subject Property | Parcels | |

COASTAL HIGH HAZARD AREA MAP

CITY POINT LANDFALL LLC

24PUD00003



1:4,800 or 1 inch = 400 feet


This map was compiled from recorded documents and does not reflect an actual survey. The Brevard County Board of County Commissioners does not assume responsibility for errors or omissions hereon.

Produced by BoCC - GIS Date: 7/16/2024

 Subject Property

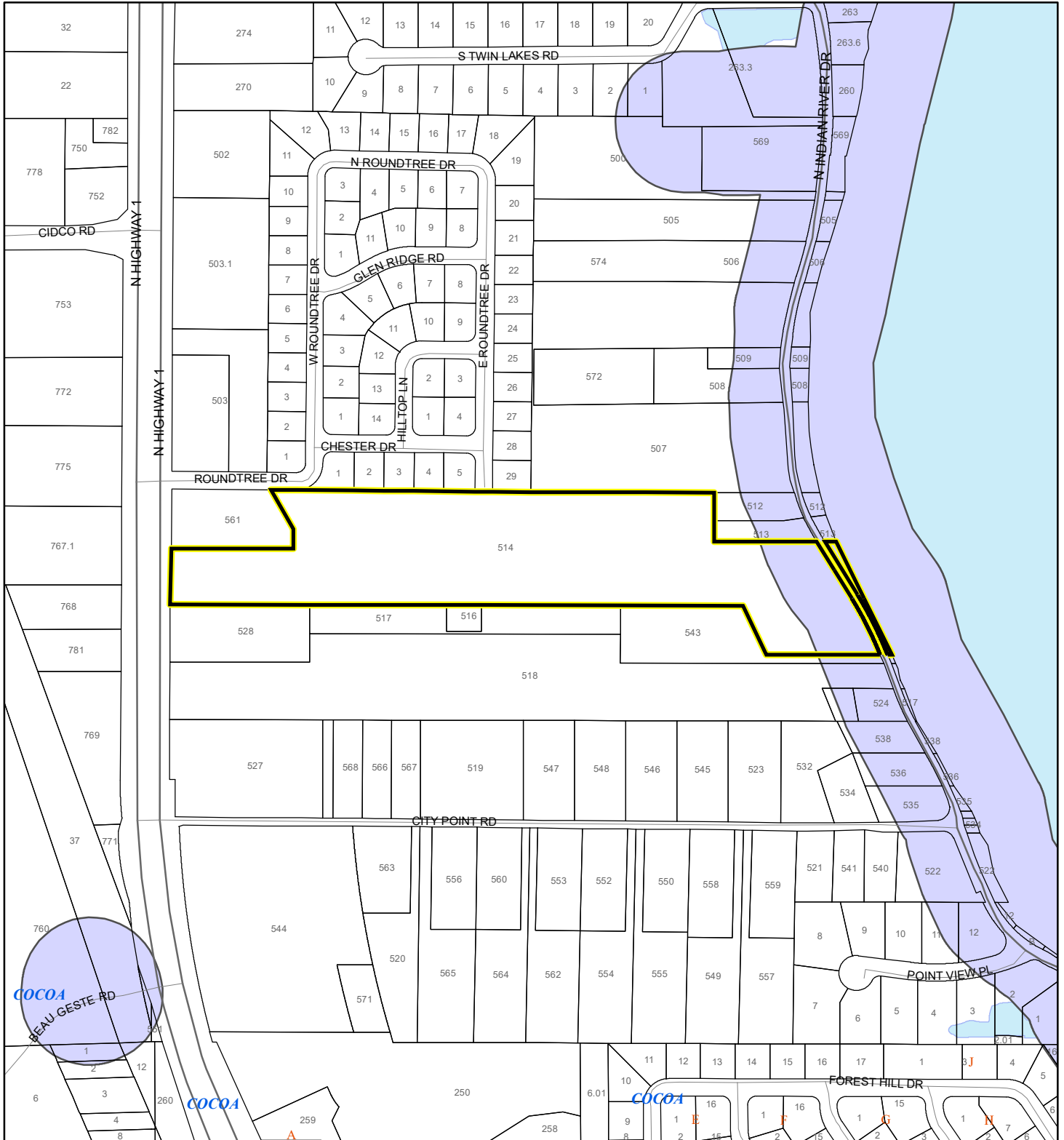
 Parcels

Coastal High Hazard Area

 SurgeZoneCat1

INDIAN RIVER LAGOON SEPTIC OVERLAY MAP

CITY POINT LANDFALL LLC
24PUD00003



1:4,800 or 1 inch = 400 feet

This map was compiled from recorded documents and does not reflect an actual survey. The Brevard County Board of County Commissioners does not assume responsibility for errors or omissions hereon.

Produced by BoCC - GIS Date: 7/16/2024

 Subject Property

 Parcels

Septic Overlay

 40 Meters

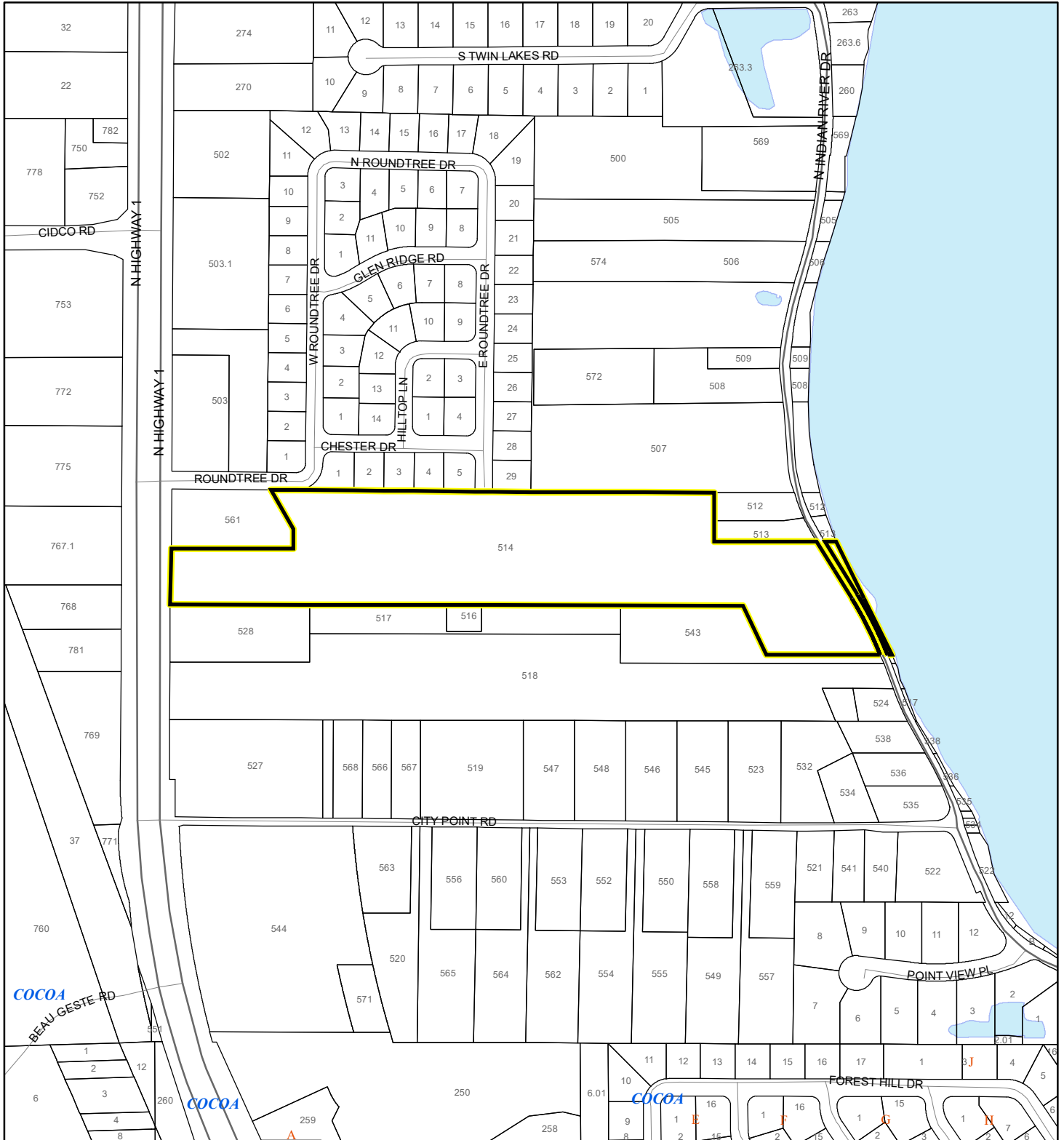
 60 Meters

 All Distances

EAGLE NESTS MAP

CITY POINT LANDFALL LLC

24PUD00003



1:4,800 or 1 inch = 400 feet

This map was compiled from recorded documents and does not reflect an actual survey. The Brevard County Board of County Commissioners does not assume responsibility for errors or omissions herein.

Produced by BoCC - GIS Date: 7/16/2024

 Subject Property

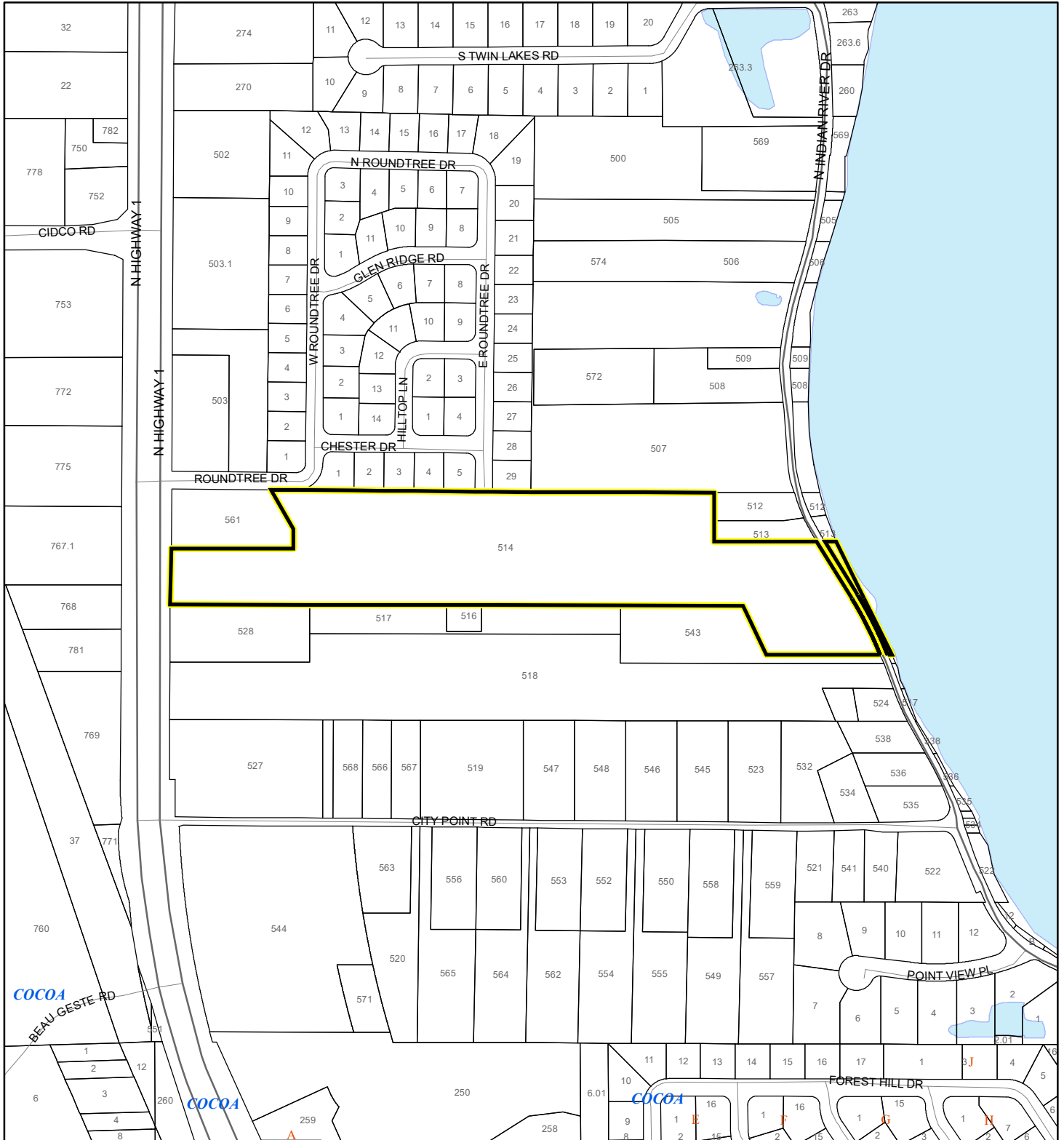
 Parcels

 Eagle Nests
FWS


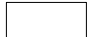

SCRUB JAY OCCUPANCY MAP

CITY POINT LANDFALL LLC

24PUD00003



1:4,800 or 1 inch = 400 feet

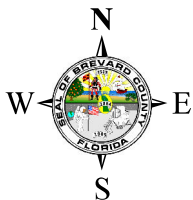
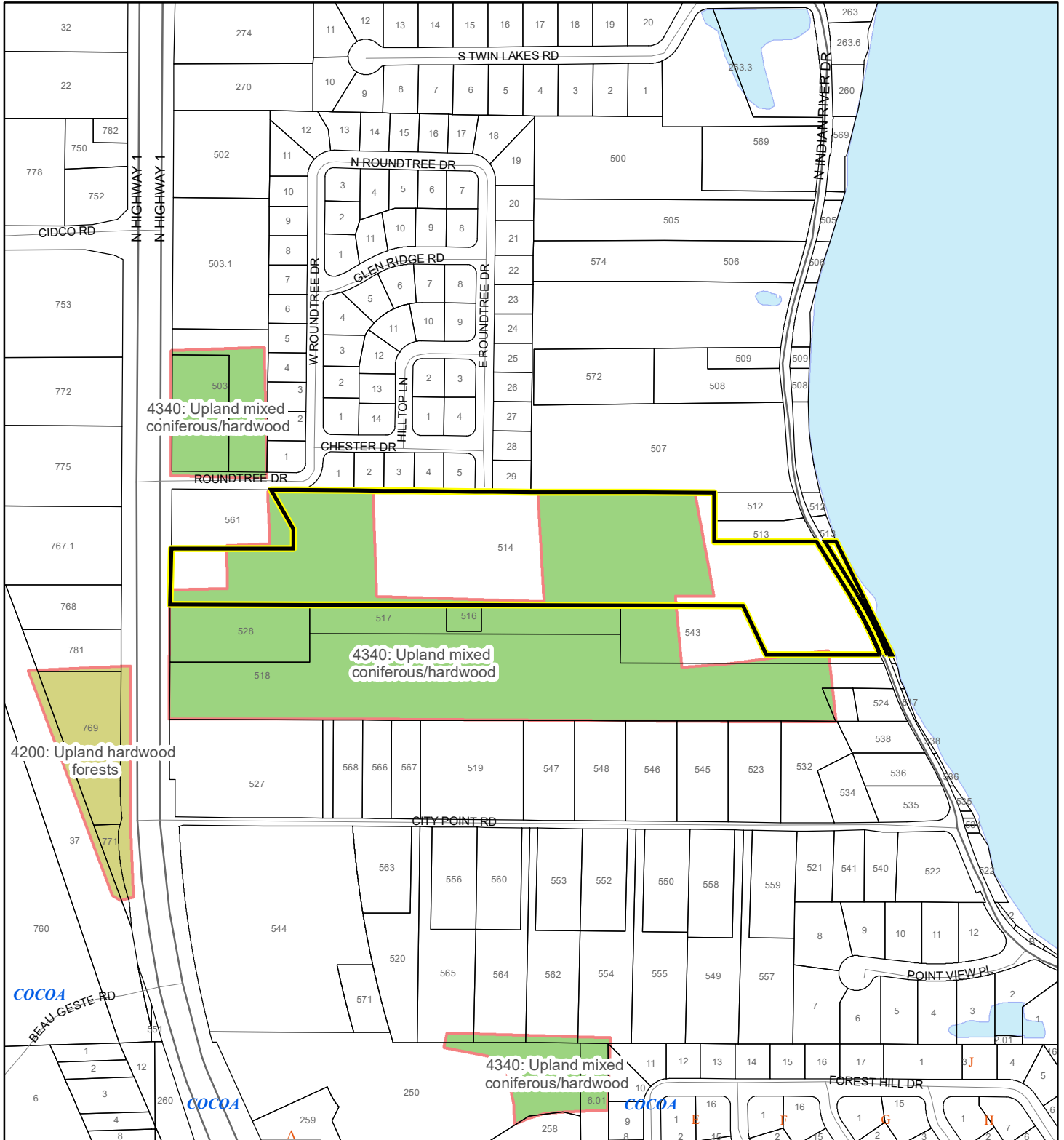
-  Subject Property
-  Parcels
-  Scrub Jay Occupancy

This map was compiled from recorded documents and does not reflect an actual survey. The Brevard County Board of County Commissioners does not assume responsibility for errors or omissions hereon.

Produced by BoCC - GIS Date: 7/16/2024

SJRWMD FLUCCS UPLAND FORESTS - 4000 Series MAP

CITY POINT LANDFALL LLC
24PUD00003



1:4,800 or 1 inch = 400 feet

This map was compiled from recorded documents and does not reflect an actual survey. The Brevard County Board of County Commissioners does not assume responsibility for errors or omissions hereon.

Produced by BoCC - GIS Date: 7/16/2024

SJRWMD FLUCCS Upland Forests

- Upland Coniferous Forest - 4100 Series
- Upland Hardwood Forest - 4200 Series
- Upland Mixed Forest - 4300 Series
- Tree Plantations - 4400 Series

Subject Property

Parcels