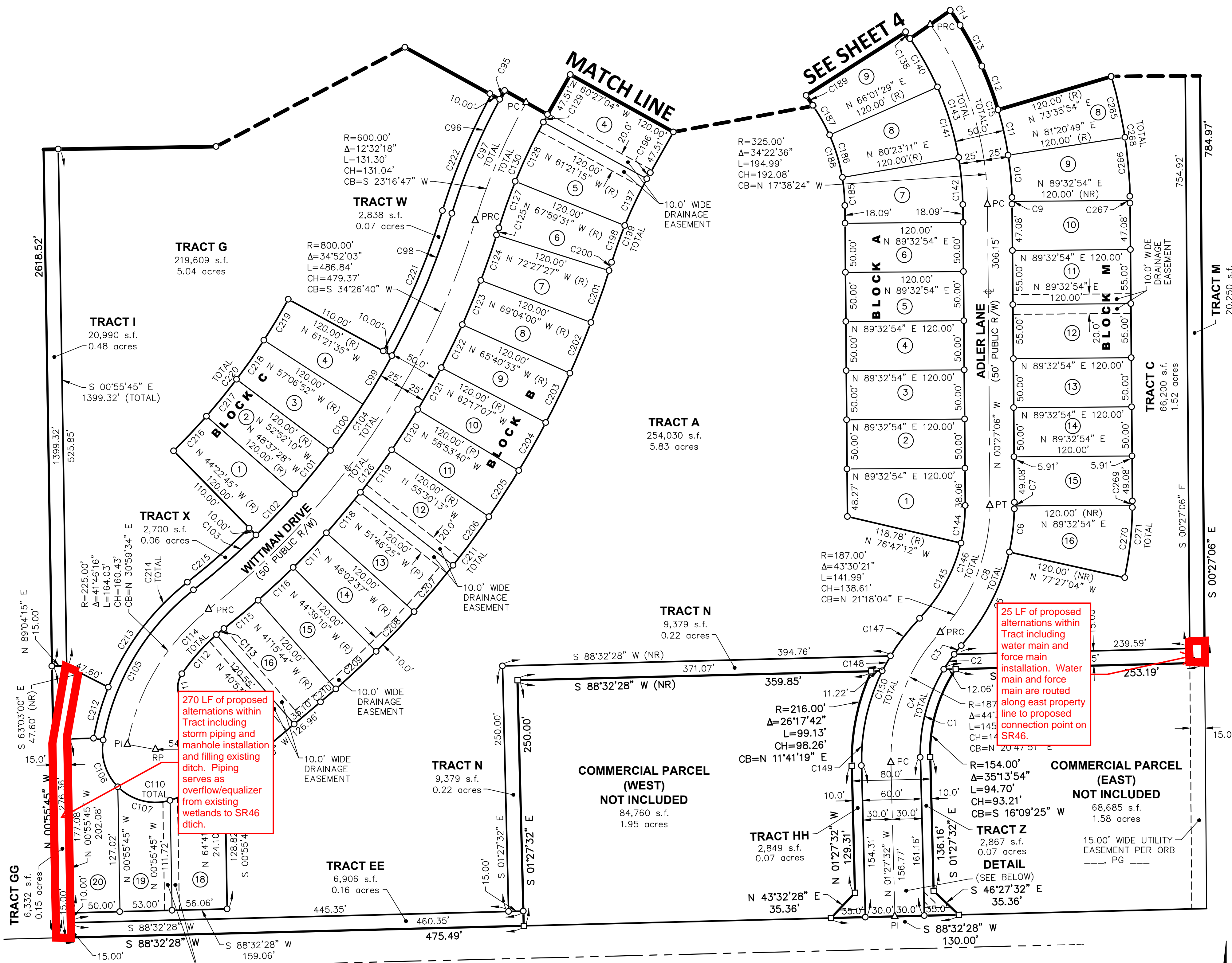


MEADOW POINTE

A SUBDIVISION IN SECTIONS 12 & 13, TOWNSHIP 21 SOUTH, RANGE 34 EAST, BREVARD COUNTY, FLORIDA

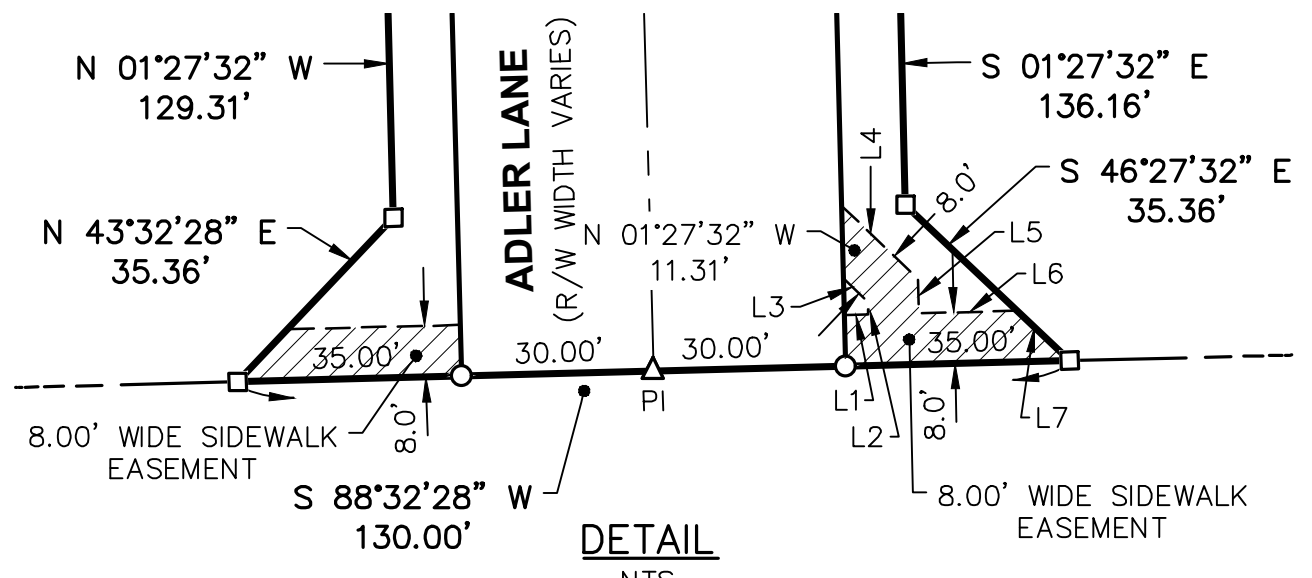
PLAT BOOK _____ PAGE _____
 SHEET 3 OF 6
 SECTIONS 12,13 TWP. 21 S., RANGE 34 E.



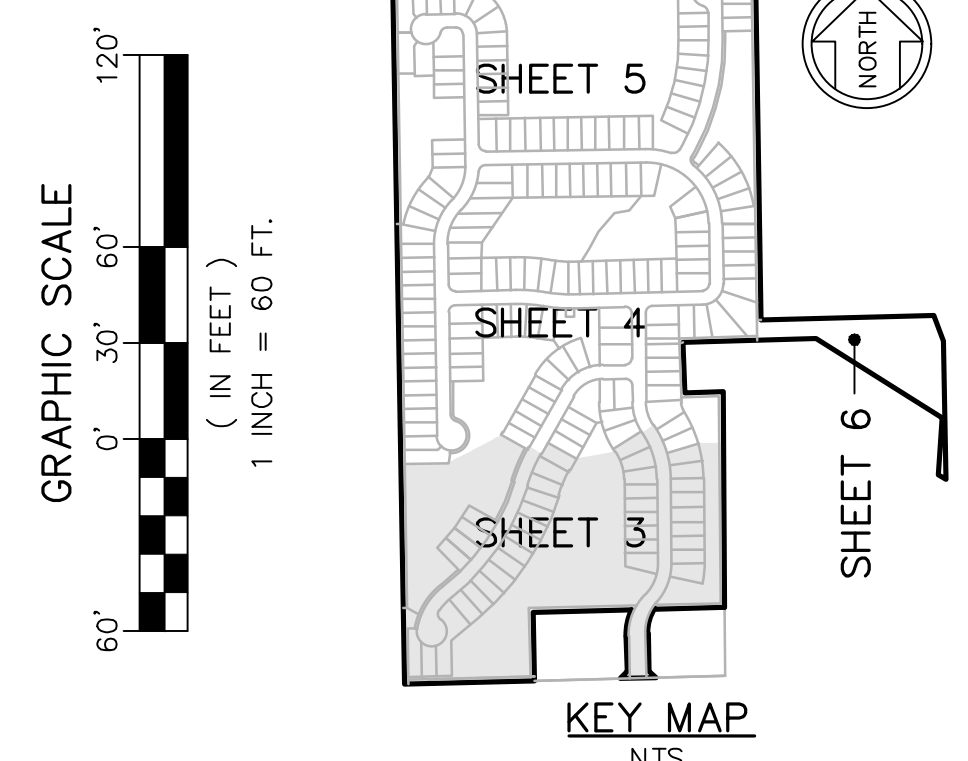
CURVE TABLE					
CURVE	RADIUS	DELTA	LENGTH	CHORD	BEARING
C1	164.00'	32'48"00"	93.88'	92.61'	N 14°56'28" E
C2	164.00'	6'29'19"	18.57'	18.56'	N 34°35'08" E
C3	164.00'	3'59'57"	11.45'	11.44'	N 39°49'46" E
C4	164.00'	43'17'17"	123.91'	120.98'	N 20°11'06" E
C5	212.00'	29'16'49"	108.34'	107.16'	N 27°11'20" E
C6	212.00'	12'45'03"	47.18'	47.08'	N 06°10'24" E
C7	212.00'	0'14'58"	0.92'	0.92'	N 00°19'37" W
C8	212.00'	42'16'51"	156.44'	152.92'	N 20°41'19" E
C9	350.00'	0'28'43"	2.92'	2.92'	N 00°41'28" W
C10	350.00'	7'43'22"	47.18'	47.14'	N 04°47'30" W
C11	350.00'	7'44'55"	47.33'	47.30'	N 12°31'39" W
C12	350.00'	7'44'55"	47.33'	47.30'	N 20°16'34" W
C13	350.00'	7'44'55"	47.33'	47.30'	N 28°01'28" W
C14	350.00'	2'55'46"	17.90'	17.89'	N 33°21'49" W
C15	350.00'	34'22'36"	209.99'	206.86'	N 17°38'24" W
C95	625.00'	0'56'24"	10.25'	10.25'	S 29°04'44" W
C96	625.00'	11'35'55"	126.52'	126.30'	S 22°48'35" W
C97	625.00'	12'32'18"	136.77'	136.50'	S 23°16'47" W
C98	775.00'	11'37'47"	157.31'	157.04'	S 22°49'32" W
C99	775.00'	4'14'42"	57.42'	57.41'	S 30°45'46" W
C100	775.00'	4'14'42"	57.42'	57.41'	S 35°00'29" W
C101	775.00'	4'14'42"	57.42'	57.41'	S 39°15'11" W
C102	775.00'	4'14'42"	57.42'	57.41'	S 43°29'53" W
C103	775.00'	6'15'27"	84.64'	84.60'	S 48°44'58" W
C104	775.00'	34'52'03"	471.63'	464.39'	S 34°26'40" W
C105	250.00'	4'14'16"	182.26'	178.25'	S 30°59'34" W
C106	54.00'	54°47'53"	51.65'	49.70'	S 17°17'31" E
C107	54.00'	61°15'52"	57.74'	55.03'	S 75°19'23" E
C108	54.00'	48°43'41"	45.93'	44.55'	N 49°40'50" E
C109	54.00'	78°15'57"	73.76'	68.16'	N 13°48'59" W
C110	54.00'	243°03'23"	229.08'	92.06'	N 68°34'44" E
C111	25.00'	86°47'11"	37.87'	34.35'	N 09°33'22" W
C112	200.00'	15'16'25"	53.31'	53.16'	N 41°28'26" E
C113	200.00'	2'46'03"	9.66'	9.66'	N 50°29'40" E
C114	200.00'	18°02'28"	62.97'	62.72'	N 42°51'28" E
C115	825.00'	3'08'25"	45.22'	45.21'	N 50°18'29" E
C116	825.00'	3'23'27"	48.82'	48.82'	N 47°02'33" E
C117	825.00'	3'23'27"	48.82'	48.82'	N 43°39'06" E
C118	825.00'	3'43'48"	53.71'	53.70'	N 40°05'29" E
C119	825.00'	3'43'48"	53.71'	53.70'	N 36°21'41" E
C120	825.00'	3'23'27"	48.82'	48.82'	N 32°48'04" E
C121	825.00'	3'23'27"	48.82'	48.82'	N 29°24'37" E
C122	825.00'	3'23'27"	48.82'	48.82'	N 26°01'10" E
C123	825.00'	3'23'27"	48.82'	48.82'	N 22°37'43" E

CURVE TABLE					
CURVE	RADIUS	DELTA	LENGTH	CHORD	BEARING
C124	825.00'	3'23'27"	48.82'	48.82'	N 19°14'16" E
C125	825.00'	0'31'55"	7.66'	7.66'	N 17°16'35" E
C126	825.00'	36°39'40"	527.88'	518.92'	N 35°20'28" E
C127	575.00'	4'59'51"	50.15'	50.14'	N 19°30'33" E
C128	575.00'	6'38'17"	66.62'	66.58'	N 25°19'37" E
C129	575.00'	0'54'11"	9.06'	9.06'	N 29°05'51" E
C130	575.00'	12°32'18"	125.83'	125.58'	N 23°16'47" E
C138	200.00'	2'19'47"	8.13'	8.13'	S 33°39'48" E
C140	300.00'	10°51'11"	56.83'	56.74'	S 29°24'06" E
C141	300.00'	14°21'41"	75.20'	75.00'	S 16°47'40" E
C142	300.00'	9°09'43"	47.97'	47.92'	S 05°01'58" E
C143	300.00'	34°22'36"	180.00'	177.31'	S 17°38'24" E
C144	162.00'	13°39'54"	38.64'	38.55'	S 06°22'51" W
C145	162.00'	31°18'51"	88.54'	87.44'	S 28°52'14" W
C146	162.00'	44°58'46"	127.18'	123.94'	S 22°02'17" W
C147	206.00'	13°29'08"	48.49'	48.37'	S 37°47'05" W
C148	206.00'	4°49'24"	17.34'	17.34'	S 28°37'50" W
C149	206.00'	27°40'40"	99.51'	98.55'	S 12°22'48" W
C150	206.00'	45°59'12"	165.34'	160.94'	S 21°32'04" W
C185	180.00'	9°09'43"	28.78'	28.75'	N 05°01'58" W
C186	180.00'	14°21'41"	45.12'	45.00'	N 16°47'40" W
C187	180.00'	10°51'11"	34.10'	34.05'	N 29°24'06" W
C188	180.00'	34°22'36"	108.00'	106.38'	N 17°38'24" W
C189	320.00'	2'19'47"	13.01'	13.01'	N 33°39'48" W
C196	455.00'	0'54'11"	7.17'	7.17'	S 29°05'51" W
C197	455.00'	6'38'17"	52.71'	52.68'	S 25°19'37" W
C198	455.00'	4°59'51"	39.69'	39.67'	S 19°30'33" W
C199	455.00'	12°32'18"	99.57'	99.37'	S 23°16'47" W
C200	945.00'	0'31'55"	8.77'	8.77'	S 17°16'35" W
C201	945.00'	3'23'27"	55.93'	55.92'	S 19°14'16" W
C202	945.00'	3'23'27"	55.93'	55.92'	S 22°37'43" W
C203	945.00'	3'23'27"	55.93'	55.92'	S 26°01'10" W
C204	945.00'	3'23'27"	55.93'	55.92'	S 29°24'37" W
C205	945.00'	3'23'27"	55.93'	55.92'	S 32°48'04" W
C206	945.00'	3'43'48"	61.52'	61.51'	S 36°21'41" W
C207	945.00'	3'43'48"	61.52'	61.51'	S 40°05'29" W
C208	945.00'	3'23'27"	55.93'	55.92'	S 43°39'06" W
C209	945.00'	3'23'27"	55.93'	55.92'	S 47°02'33" W
C210	945.00'	1'14'43"	20.54'	20.54'	S 49°21'38" W
C211	945.00'	32°58'22"	54.383'	53.636'	S 33°29'49" W
C212	260.00'	11°58'44"	54.36'	54.26'	N 16°05'48" E
C213	260.00'	29°47'32"	135.19'	133.67'	N 36°58'55" E
C214	260.00'	41°46'16"	189.55'	185.38'	N 30°59'34" E
C215	765.00'	6'15'27"	83.55'	83.51'	N 48°44'58" E
C216	655.00'	4'14'42"	48.53'	48.52'	N 43°29'53" E
C217	655.00'	4'14'42"	48.53'	48.52'	N 39°15'11" E
C218	655.00'	4'14'42"	48.53'	48.52'	N 35°00'29" E
C219	655.00'	4'14'42"	48.53'	48.52'	N 30°45'46" E
C220	655.00'	16°58'49"	194.12'	193.41'	N 16°58'49" E
C221	765.00'	11°37'47"	155.28'	155.01'	N 22°49'32" E
C222	635.00'	11°35'55"	128.54'	128.32'	N 22°48'35" E
C265	470.00'	7'44'55"	63.56'	63.51'	S 12°31'39" E
C266	470.00'	7°50'42"	64.35'	64.30'	S 04°43'50" E
C267	470.00'	0°21'23"	2.92'	2.92'	S 00°37'48" E
C268	470.00'	32°15'47"	264.66'	261.17'	S 16°35'00" E
C269	332.00'	0°09'34"	0.92'	0.92'	S 00°22'19" E
C270	332.00'	12°50'28"	74.41'	74.25'	S 06°07'41" W
C271	332.00'	13°00'02"	75.33'	75.17'	S 06°02'55" W

LINE	BEARING	DISTANCE
L1	N 88°32'28" E	3.70'
L2	N 01°27'32" W	2.09'
L3	N 46°27'32" W	5.23'
L4	S 46°27'32" E	16.55'
L5	S 01°27'32" E	5.40'
L6	N 88°32'28" E	15.30'
L7	S 46°27'32" E	11.31'



- LEGEND:**
- DRMP ENGINEERS • SURVEYORS • PLANNERS • SCIENTISTS
 - DYER, RIDDLE, MILLS & PRECOURT, INC.
 - (R) RADIAL LINE
 - (NR) NON-RADIAL LINE
 - S.F. SQUARE FEET
 - C13 CURVE NUMBER LABEL
 - PC POINT-OF-CURVATURE
 - PCC POINT-OF-INTERSECTION
 - PRC POINT-OF-COMPOUND CURVATURE
 - PRT POINT-OF-REVERSE CURVATURE
 - PT POINT-OF-TANGENCY
 - CM CENTERLINE
 - PCP CONCRETE MONUMENT
 - PRM PERMANENT CONTROL POINT
 - PRM PERMANENT CONCRETE MONUMENT
 - SET CM "DRMP LB2648 PRM"
 - SET NAIL & DISK "DRMP LB2648 PRM"
 - SET 5/8" RE-BAR "DRMP LB2648"
 - SET NAIL & DISK "DRMP LB2648 PCP"



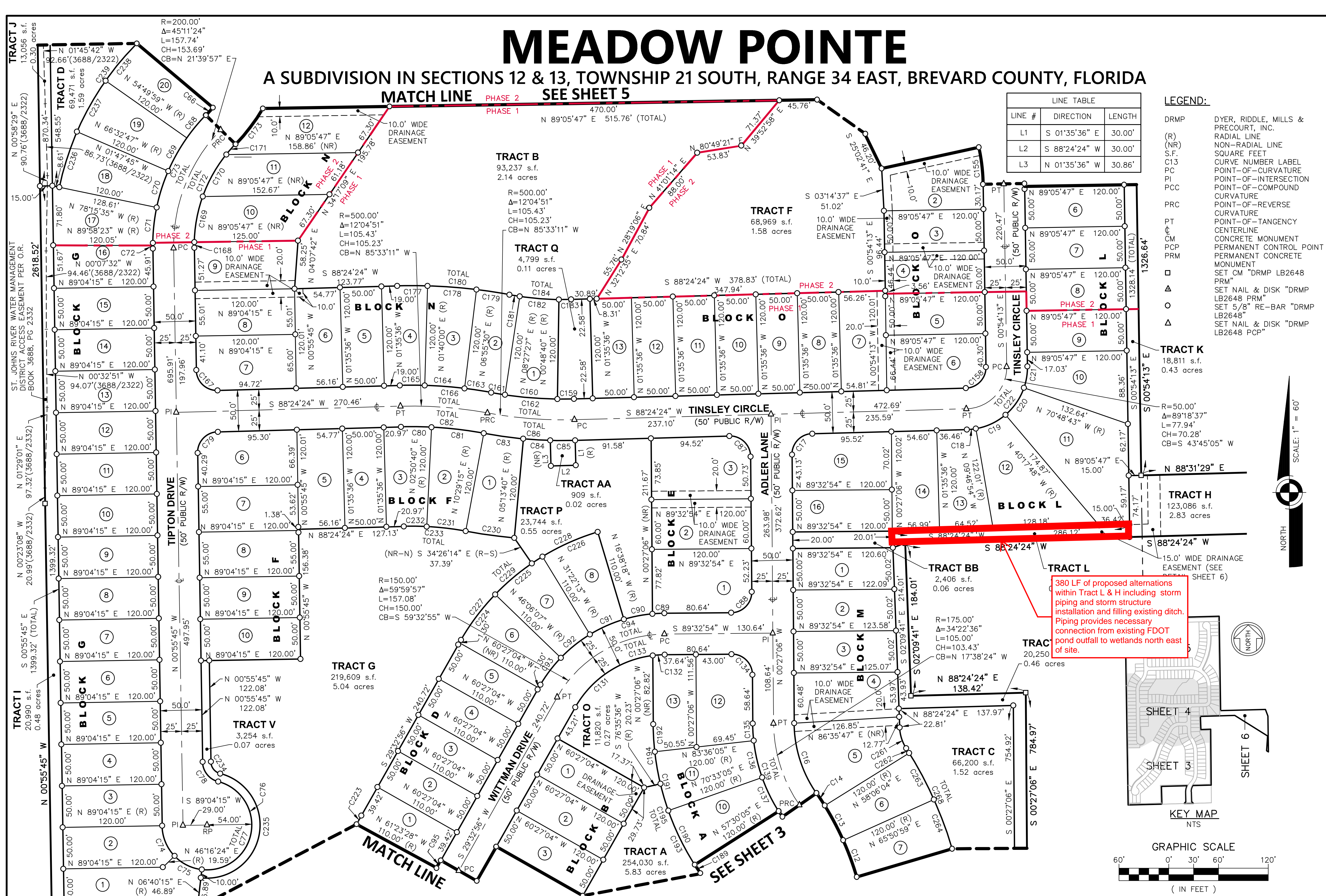
DRMP
 ENGINEERS • SURVEYORS • PLANNERS • SCIENTISTS
 100 PARNELL STREET • SUITE A
 MERRITT ISLAND, FLORIDA 32953
 PHONE NO.: (321) 453-0010
 DRMP, INC. CERTIFICATE NO.: 2648
 J. BARRY CABANISS PLS NO. 4524

CONSTRUCTION PLANS FOR
MEADOW POINTE SUBDIVISION
 PRELIMINARY PLAT
 DRMP, Inc.
 BRANDON WALLER, P.E.
 State of Florida No. 94850
 PROJECT NUMBER: 23-0943.000
 SCALE: 1" = 60'
 DATE: JANUARY 06, 2022
 SHEET: **C16.0**

MEADOW POINTE

A SUBDIVISION IN SECTIONS 12 & 13, TOWNSHIP 21 SOUTH, RANGE 34 EAST, BREVARD COUNTY, FLORIDA

PLAT BOOK PAGE
SHEET 4 OF 6
SECTIONS 12,13 TWP. 21 S., RANGE 34 E.



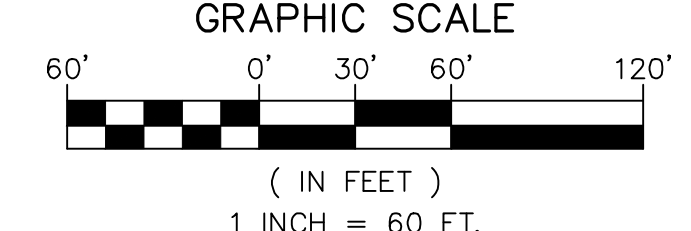
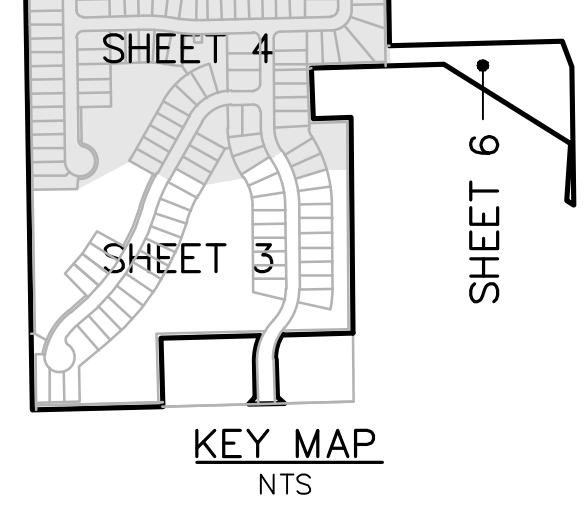
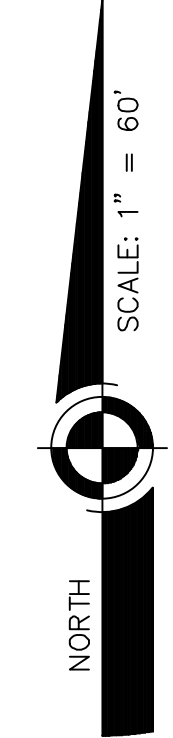
LINE TABLE

LINE #	DIRECTION	LENGTH
L1	S 01°35'36" E	30.00'
L2	S 88°24'24" W	30.00'
L3	N 01°35'36" W	30.86'

- LEGEND:
- DRMP DYER, RIDDLER, MILLS & PRECOURT, INC.
 - (R) RADIAL LINE
 - (NR) NON-RADIAL LINE
 - S.F. SQUARE FEET
 - C1 CURVE NUMBER LABEL
 - PC POINT-OF-CURVATURE
 - PI POINT-OF-INTERSECTION
 - PCC POINT-OF-COMPOUND CURVATURE
 - PRC POINT-OF-REVERSE CURVATURE
 - PT POINT-OF-TANGENCY
 - CM CENTERLINE
 - PCP PERMANENT CONTROL POINT
 - PRM PERMANENT CONCRETE MONUMENT
 - SET CM "DRMP LB2648 PRM"
 - △ SET NAIL & DISK "DRMP LB2648 PRM"
 - SET 5/8" RE-BAR "DRMP LB2648"
 - △ SET NAIL & DISK "DRMP LB2648 PCP"

CURVE TABLE

CURVE	RADIUS	DELTA	LENGTH	CHORD	BEARING
C160	475.00'	7°38'47"	63.39'	63.34'	N 85°21'57" W
C161	475.00'	2°01'48"	16.83'	16.83'	N 80°31'39" W
C162	475.00'	12°04'51"	100.15'	99.97'	N 85°33'11" W
C163	525.00'	3°33'45"	32.64'	32.64'	N 81°17'38" W
C164	525.00'	5°15'30"	48.18'	48.17'	N 85°42'15" W
C165	525.00'	3°15'36"	29.87'	29.87'	N 89°57'48" W
C166	525.00'	12°04'51"	110.70'	110.49'	N 85°33'11" W
C167	25.00'	90°39'51"	39.56'	35.56'	N 46°15'41" W
C168	175.00'	2°13'46"	6.81'	6.81'	N 00°11'08" E
C169	175.00'	18°27'04"	56.36'	56.11'	N 10°31'33" E
C170	175.00'	19°01'18"	58.10'	57.83'	N 29°15'45" E
C171	175.00'	5°29'15"	16.76'	16.75'	N 41°31'01" E
C172	175.00'	45°11'24"	138.02'	134.47'	N 21°39'57" E
C173	225.00'	13°51'19"	54.41'	54.28'	N 37°19'59" E
C177	645.00'	3°15'36"	36.70'	36.69'	N 89°57'48" W
C178	645.00'	5°15'30"	59.20'	59.17'	N 85°42'15" W
C179	645.00'	3°33'45"	40.10'	40.10'	N 81°17'38" W
C180	645.00'	12°04'51"	136.00'	135.75'	N 85°33'11" W
C181	355.00'	2°01'48"	12.58'	12.58'	N 80°31'39" W
C182	355.00'	7°38'47"	47.38'	47.34'	N 85°21'57" W
C183	355.00'	2°24'16"	14.90'	14.90'	N 89°36'32" W
C184	355.00'	12°04'51"	74.85'	74.71'	N 85°33'11" W
C189	320.00'	2°19'47"	13.01'	13.01'	N 33°39'48" W
C190	320.00'	13°03'00"	72.88'	72.73'	N 25°58'25" W
C191	320.00'	13°03'00"	72.88'	72.73'	N 12°55'25" W
C192	320.00'	5°56'49"	33.21'	33.20'	N 03°25'31" W
C193	320.00'	21°25'18"	119.64'	118.95'	N 24°07'03" W
C194	320.00'	12°57'17"	72.35'	72.20'	N 06°55'45" W
C195	320.00'	34°22'36"	191.99'	189.13'	N 17°38'24" W
C223	735.00'	0°56'24"	12.06'	12.06'	N 29°04'44" E
C224	285.00'	14°20'57"	71.37'	71.19'	N 36°43'25" E
C225	285.00'	14°43'54"	73.28'	73.08'	N 51°15'50" E
C226	285.00'	14°43'54"	73.28'	73.08'	N 65°59'44" E
C227	285.00'	26°00'49"	129.40'	128.29'	N 42°33'21" E
C228	285.00'	17°47'56"	88.54'	88.18'	N 64°27'44" E
C229	285.00'	43°48'45"	217.93'	216.66'	N 51°27'19" E
C230	645.00'	5°15'35"	59.21'	59.19'	N 82°08'33" E
C231	355.00'	7°38'35"	47.36'	47.32'	N 83°20'03" W
C232	355.00'	4°26'16"	27.50'	27.49'	N 89°22'28" W
C233	355.00'	12°04'51"	74.85'	74.71'	N 85°33'11" W
C234	15.00'	74°35'03"	19.53'	18.18'	N 38°13'17" E
C235	64.00'	17°21'03"	192.33'	127.70'	N 10°34'43" W
C236	345.00'	11°42'48"	70.53'	70.41'	N 17°35'49" E
C237	345.00'	11°42'48"	70.53'	70.41'	N 29°18'37" E
C238	345.00'	9°05'37"	54.76'	54.70'	N 39°42'50" E
C239	345.00'	32°31'13"	195.82'	193.20'	N 28°00'02" E
C261	50.00'	30°33'12"	26.66'	26.35'	N 17°26'17" E
C262	470.00'	0°48'57"	6.69'	6.69'	N 32°18'25" E
C263	470.00'	7°44'55"	63.56'	63.51'	N 28°01'28" E
C264	470.00'	7°44'55"	63.56'	63.51'	N 20°16'34" E
C268	470.00'	32°15'47"	264.66'	261.17'	N 16°35'00" E



CURVE	RADIUS	DELTA	LENGTH	CHORD	BEARING
C12	350.00'	7°44'55"	47.33'	47.30'	N 20°16'34" W
C13	350.00'	7°44'55"	47.33'	47.30'	N 28°01'28" W
C14	350.00'	2°55'46"	17.90'	17.89'	N 33°21'49" W
C16	150.00'	34°22'36"	90.00'	88.65'	N 17°38'24" W
C17	25.00'	88°51'30"	38.77'	35.00'	N 43°58'39" E
C18	75.00'	8°11'18"	10.72'	10.71'	N 84°18'45" E
C19	75.00'	30°30'54"	39.94'	39.47'	N 64°57'39" E
C20	75.00'	30°30'54"	39.94'	39.47'	N 34°26'45" E
C21	75.00'	20°05'31"	26.30'	26.17'	N 09°08'32" E
C22	75.00'	89°18'37"	116.91'	105.43'	N 43°45'05" E
C66	175.00'	4°07'40"	12.61'	12.60'	S 42°11'48" W
C68	225.00'	9°05'37"	35.71'	35.67'	S 39°42'50" W
C69	225.00'	11°42'48"	46.00'	45.92'	S 29°18'37" W
C70	225.00'	11°42'48"	46.00'	45.92'	S 17°35'49" W
C71	225.00'	11°42'48"	46.00'	45.92'	S 05°53'01" W
C72	225.00'	0°57'22"	3.75'	3.75'	S 0°27'04" W
C73	225.00'	45°11'24"	177.46'	172.90'	S 21°39'57" W
C74	54.00'	42°47'41"	40.34'	39.40'	S 22°19'41" E
C75	54.00'	39°36'09"	37.32'	36.59'	S 63°31'40" E
C76	54.00'	172°11'03"	162.28'	107.75'	N 10°34'43" E
C77	54.00'	25°43'03"	239.94'	85.92'	N 51°46'43" E
C78	25.00'	74°35'03"	32.54'	30.29'	N 38°13'17" W
C79	25.00'	89°20'09"	38.98'	35.15'	N 43°44'19" E
C80	475.00'	4°26'16"	36.79'	36.78'	S 89°22'28" E
C81	475.00'	7°38'35"	63.36'	63.32'	S 83°20'03" E
C82	475.00'	12°04'51"	100.15'	99.97'	S 85°33'11" E
C83	525.00'	5°15'35"	48.19'	48.18'	S 82°08'33" E
C84	525.00'	3°32'43"	32.49'	32.48'	S 86°32'42" E
C85	525.00'	3°16'33"	30.02'	30.01'	S 89°57'20" E
C86	525.00'	12°04'51"	110.70'	110.49'	S 85°33'11" E
C87	25.00'	91°08'30"	39.77'	35.71'	S 46°01'21" E
C88	25.00'	90°00'00"	39.27'	35.36'	S 44°32'54" W
C89	175.00'	4°42'24"	14.38'	14.37'	S 87°11'42" W
C90	175.00'	11°28'48"	35.06'	35.00'	S 79°06'06" W
C91	175.00'	14°43'54"	45.00'	44.87'	S 65°59'44" W
C92	175.00'	14°43'54"	45.00'	44.87'	S 51°15'50" W
C93	175.00'	14°20'57"	43.83'	43.71'	S 36°43'25" W
C94	175.00'	59°59'57"	183.26'	175.00'	S 59°32'55" W
C95	625.00'	0°56'24"	10.25'	10.25'	S 29°04'44" W
C131	125.00'	53°24'10"	116.51'	112.33'	N 56°15'01" E
C132	125.00'	6°35'48"	14.39'	14.38'	N 86°15'00" E
C133	125.00'	59°59'57"	130.90'	125.00'	N 59°32'55" E
C134	25.00'	90°00'00"	39.27'	35.36'	S 45°27'06" E
C135	200.00'	5°56'49"	20.76'	20.75'	S 03°25'31" E
C136	200.00'	13°03'00"	45.55'	45.45'	S 12°55'25" E
C137	200.00'	13°03'00"	45.55'	45.45'	S 25°58'25" E
C139	200.00'	34°22'36"	120.00'	118.21'	S 17°38'24" E
C155	225.00'	11°25'55"	44.89'	44.82'	S 06°37'11" E
C158	25.00'	89°18'37"	38.97'	35.14'	S 43°45'05" W
C159	475.00'	2°24'16"	19.93'	19.93'	S 89°36'32" W

DRMP
ENGINEERS • SURVEYORS • PLANNERS • SCIENTISTS

100 PARNELL STREET • SUITE A
MERRITT ISLAND, FLORIDA 32953
PHONE NO.: (321) 453-0010
DRMP, INC. CERTIFICATE NO. 2648
J. BARRY CABANISS PLS NO. 4524

CONSTRUCTION PLANS FOR
MEADOW POINTE
SUBDIVISION

PRELIMINARY PLAT

DO NOT SCALE THIS DRAWING - DIMENSIONS AND NOTES TAKE PREFERENCE

DRMP, Inc.

BRANDON JAMES WALLER
LICENSE
No. 94850
STATE OF FLORIDA
PROFESSIONAL ENGINEER

BRANDON JAMES WALLER, P.E.
State of Florida License No. 94850
PROJECT NUMBER: 23-0943-000
SCALE: 1" = 60'
DATE: JANUARY 06, 2022
SHEET: **C17.0**