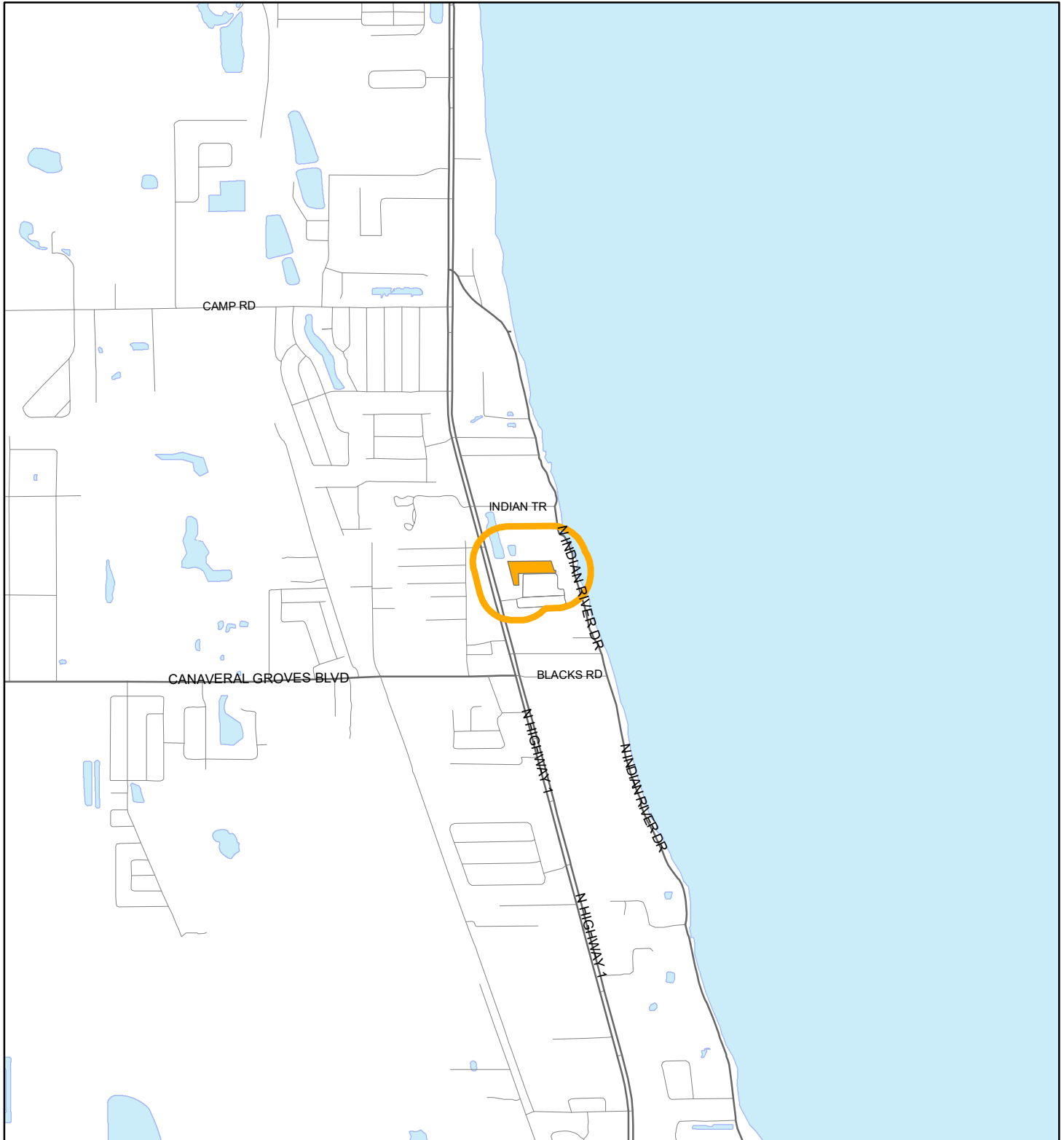


LOCATION MAP

IBRAHIM & HAROON REALESTATE INC

24SS00008





1:24,000 or 1 inch = 2,000 feet

Buffer Distance: 500 feet

This map was compiled from recorded documents and does not reflect an actual survey. The Brevard County Board of County Commissioners does not assume responsibility for errors or omissions hereon.

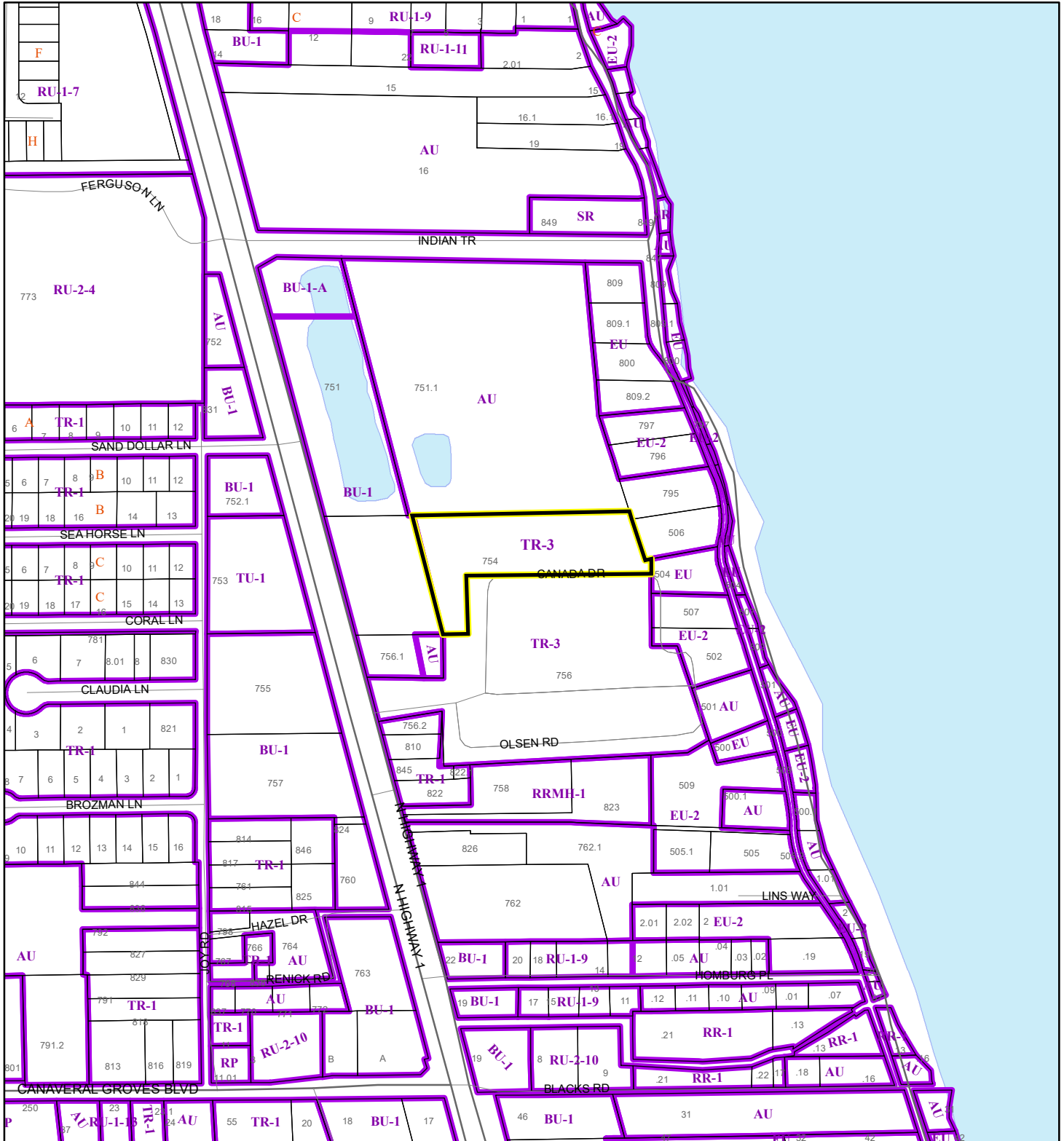
Produced by BoCC - GIS Date: 5/21/2024

 Buffer
 Subject Property

ZONING MAP

IBRAHIM & HAROON REALESTATE INC

24SS00008



1:4,800 or 1 inch = 400 feet

This map was compiled from recorded documents and does not reflect an actual survey. The Brevard County Board of County Commissioners does not assume responsibility for errors or omissions hereon.

Produced by BoCC - GIS Date: 5/21/2024

 Subject Property

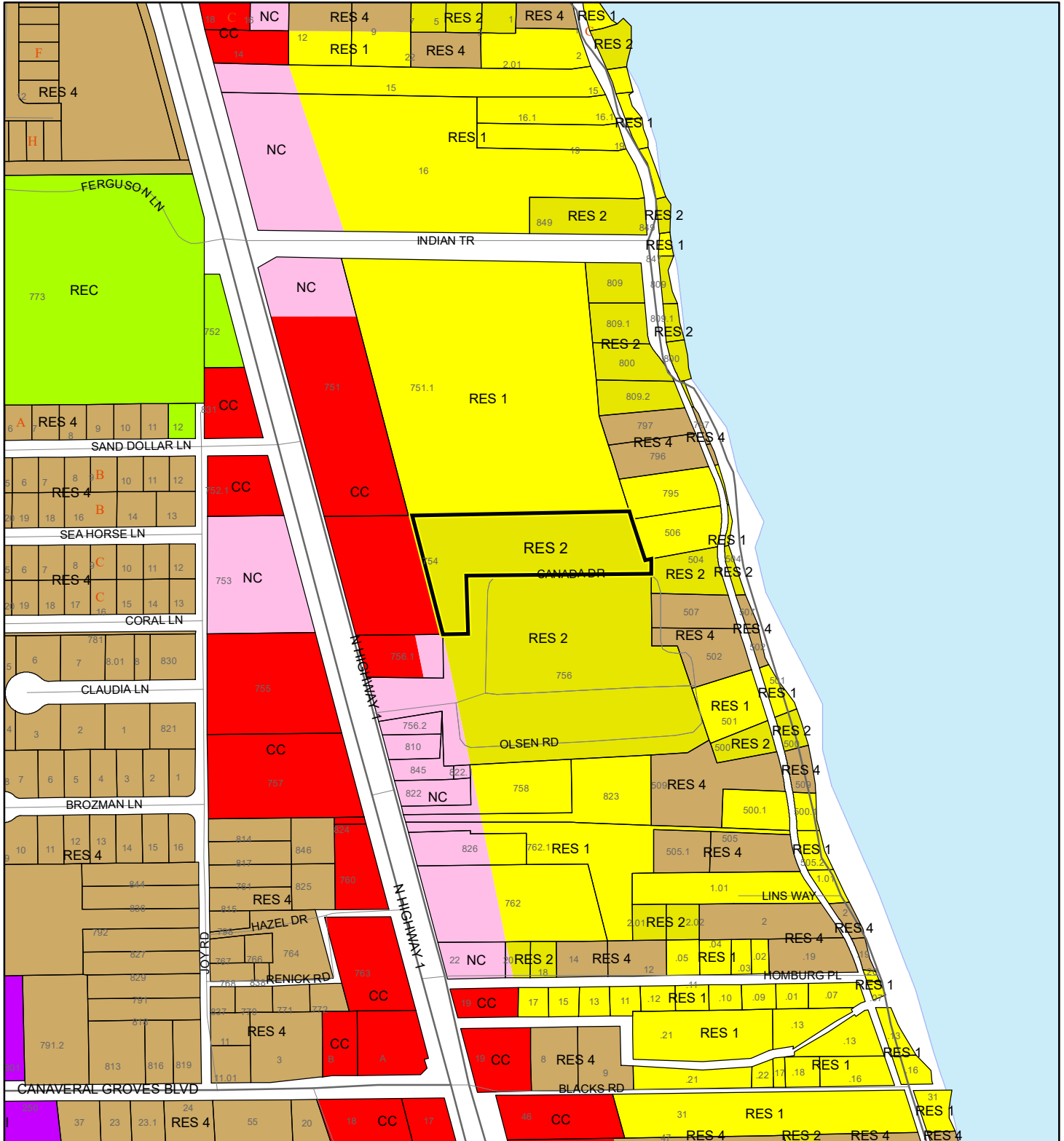
Parcels

Zoning

FUTURE LAND USE MAP

IBRAHIM & HAROON REALESTATE INC

24SS00008



1:4,800 or 1 inch = 400 feet

Subject Property

Parcels

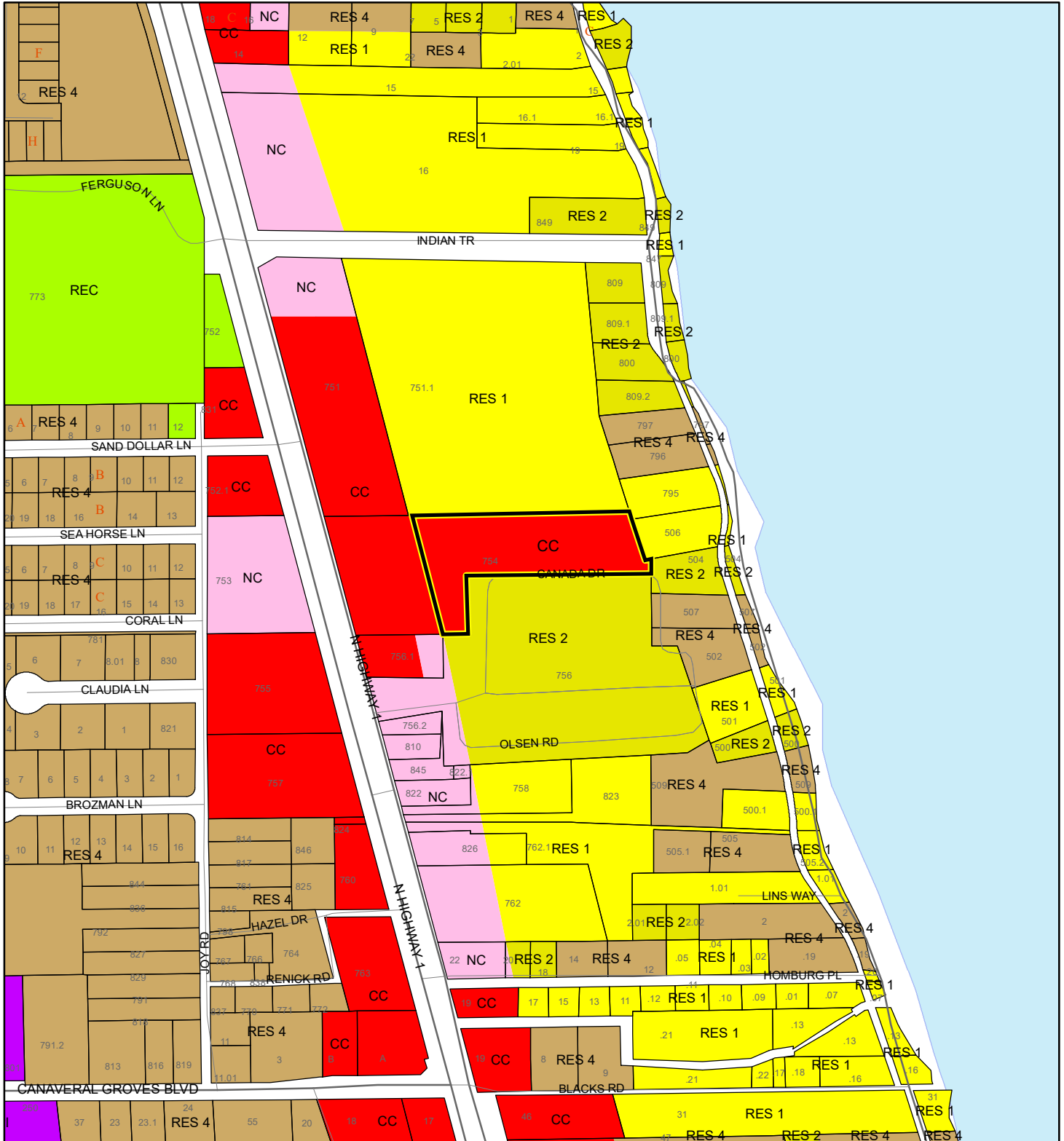
This map was compiled from recorded documents and does not reflect an actual survey. The Brevard County Board of County Commissioners does not assume responsibility for errors or omissions hereon.

Produced by BoCC - GIS Date: 5/21/2024

PROPOSED FUTURE LAND USE MAP

IBRAHIM & HAROON REALESTATE INC

24SS00008



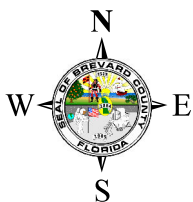
1:4,800 or 1 inch = 400 feet

Subject Property
Parcels

This map was compiled from recorded documents and does not reflect an actual survey. The Brevard County Board of County Commissioners does not assume responsibility for errors or omissions hereon.

Produced by BoCC - GIS Date: 5/21/2024

AERIAL MAP
IBRAHIM & HAROON REALESTATE INC
24SS00008





1:2,400 or 1 inch = 200 feet

PHOTO YEAR: 2023

This map was compiled from recorded documents and does not reflect an actual survey. The Brevard County Board of County Commissioners does not assume responsibility for errors or omissions hereon.

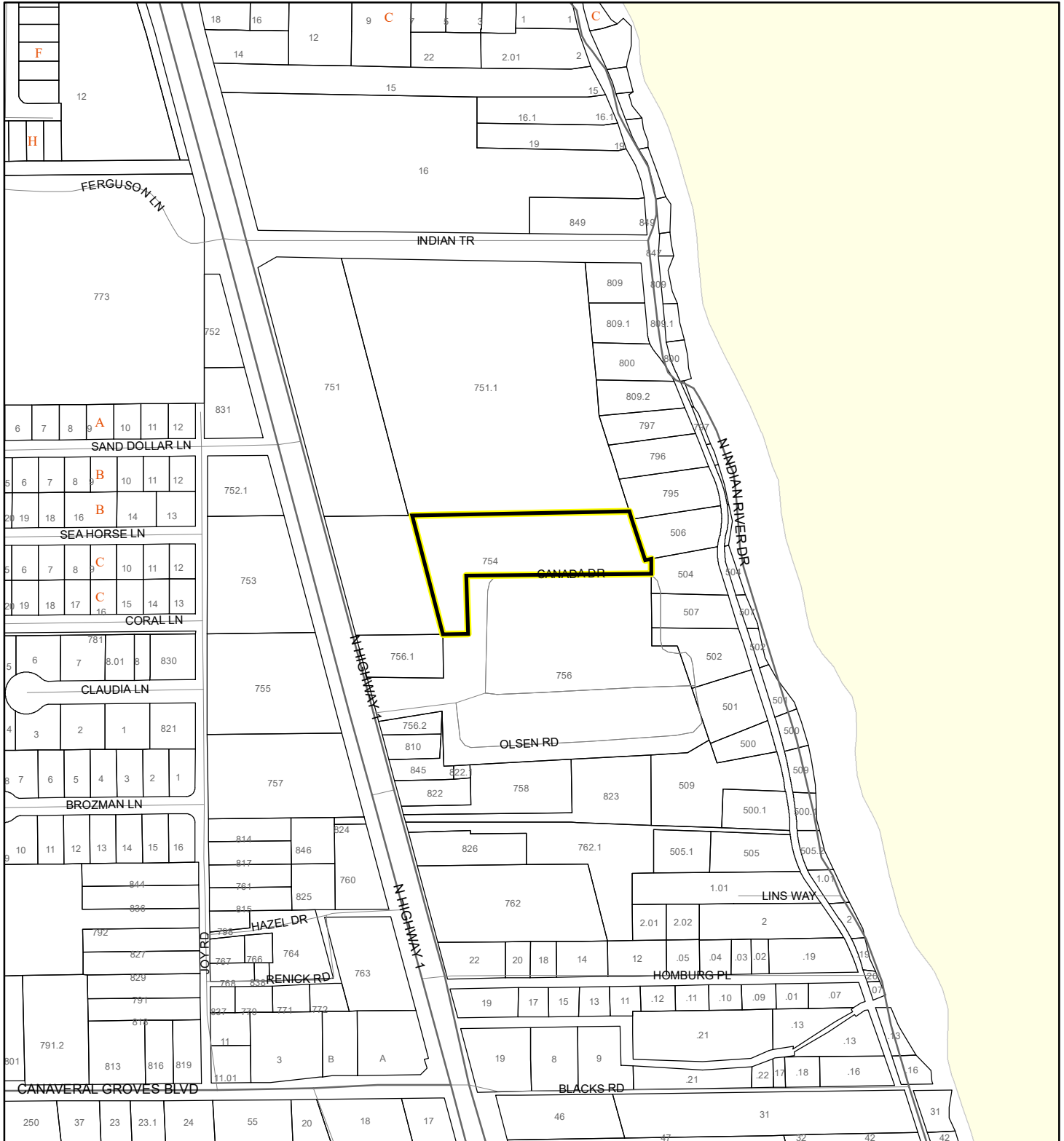
Produced by BoCC - GIS Date: 5/21/2024

 Subject Property
 Parcels

NWI WETLANDS MAP

IBRAHIM & HAROON REALESTATE INC

24SS00008






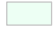

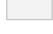




1:4,800 or 1 inch = 400 feet

This map was compiled from recorded documents and does not reflect an actual survey. The Brevard County Board of County Commissioners does not assume responsibility for errors or omissions hereon.

Produced by BoCC - GIS Date: 5/21/2024

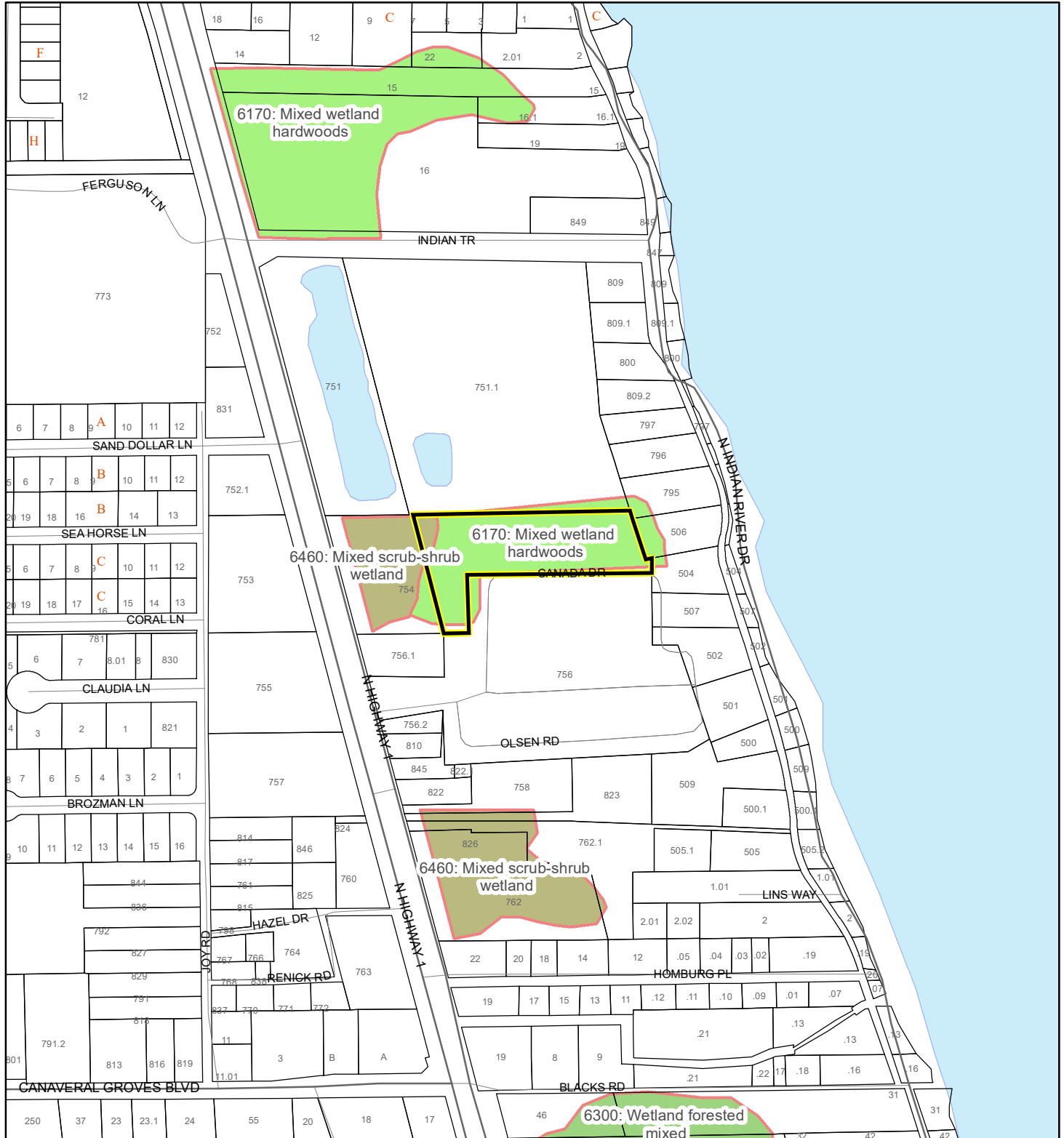
National Wetlands Inventory (NWI)

 Estuarine and Marine Deepwater	 Freshwater Pond
 Estuarine and Marine Wetland	 Lake
 Freshwater Emergent Wetland	 Other
 Freshwater Forested/Shrub Wetland	 Riverine
	 Subject Property
	 Parcels

SJRWMD FLUCCS WETLANDS - 6000 Series MAP

IBRAHIM & HAROON REAL ESTATE INC

24SS00008



1:4,800 or 1 inch = 400 feet

This map was compiled from recorded documents and does not reflect an actual survey. The Brevard County Board of County Commissioners does not assume responsibility for errors or omissions hereon.

Produced by BoCC - GIS Date: 5/21/2024

SJRWMD FLUCCS WETLANDS

- Wetland Hardwood Forests - Series 6100
- Wetland Coniferous Forest - Series 6200
- Wetland Forested Mixed - Series 6300
- Vegetated Non-Forested Wetlands - Series 6400
- Non-Vegetated Wetland - Series 6500

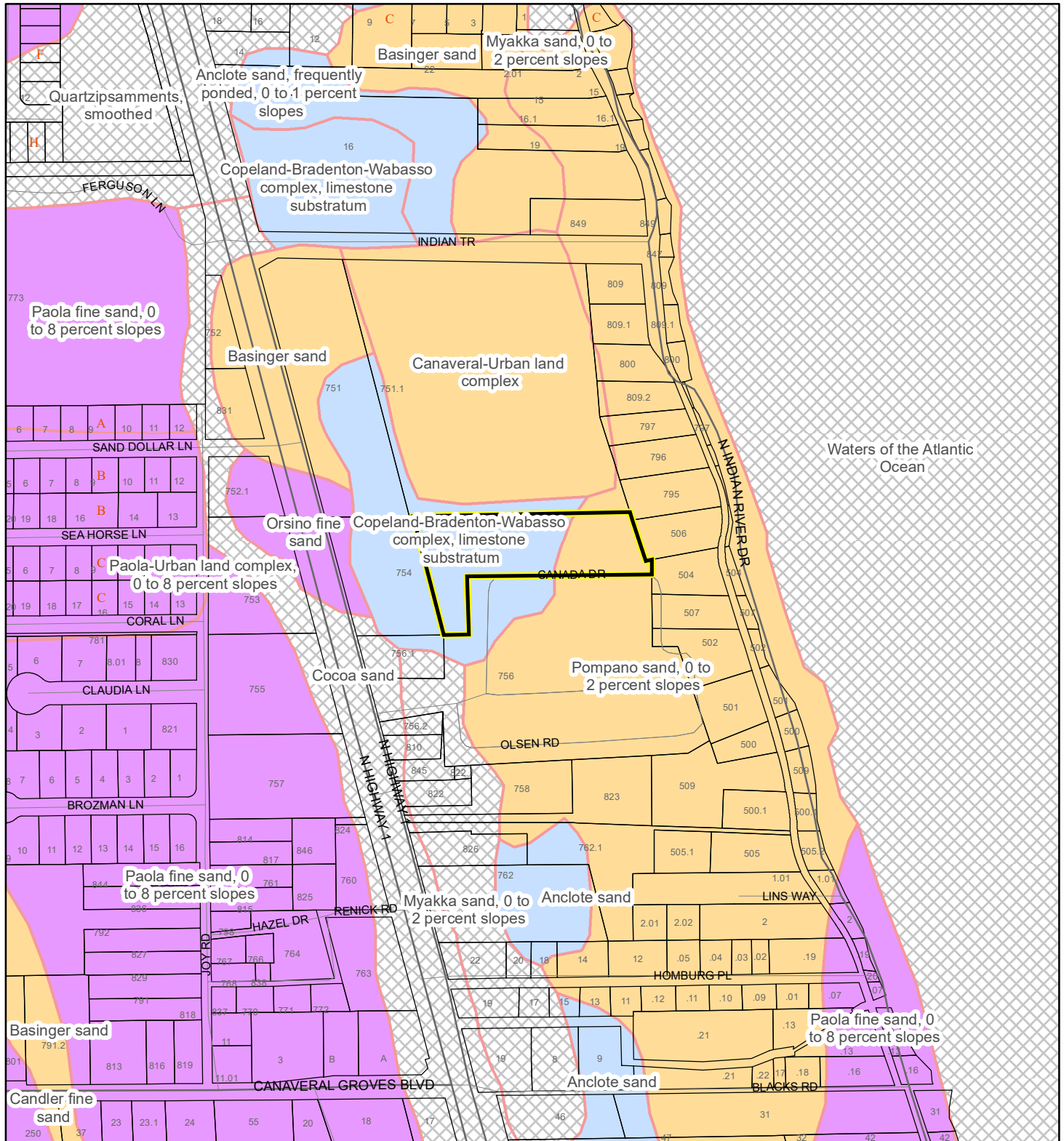
Subject Property

Parcels

USDA SCSSS SOILS MAP

IBRAHIM & HAROON REALESTATE INC

24SS00008



1:4,800 or 1 inch = 400 feet

This map was compiled from recorded documents and does not reflect an actual survey. The Brevard County Board of County Commissioners does not assume responsibility for errors or omissions hereon.

Produced by BoCC - GIS Date: 5/21/2024

USDA SCSSS Soils

- Aquifer and Hydric
- Aquifer
- Hydric
- None

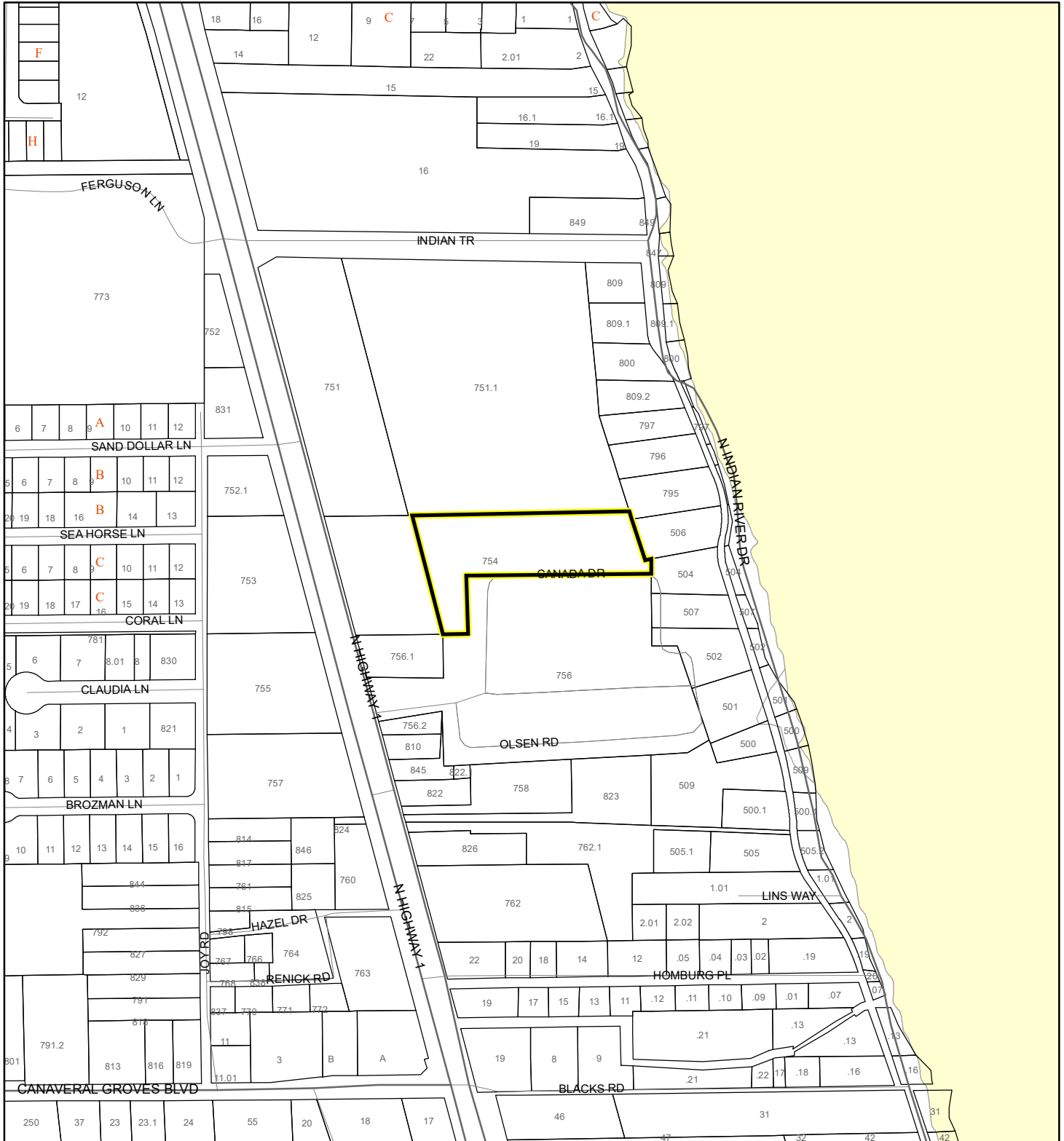
Subject Property

Parcels

FEMA FLOOD ZONES MAP

IBRAHIM & HAROON REALESTATE INC

24SS00008



1:4,800 or 1 inch = 400 feet

This map was compiled from recorded documents and does not reflect an actual survey. The Brevard County Board of County Commissioners does not assume responsibility for errors or omissions hereon.

Produced by BoCC - GIS Date: 5/21/2024

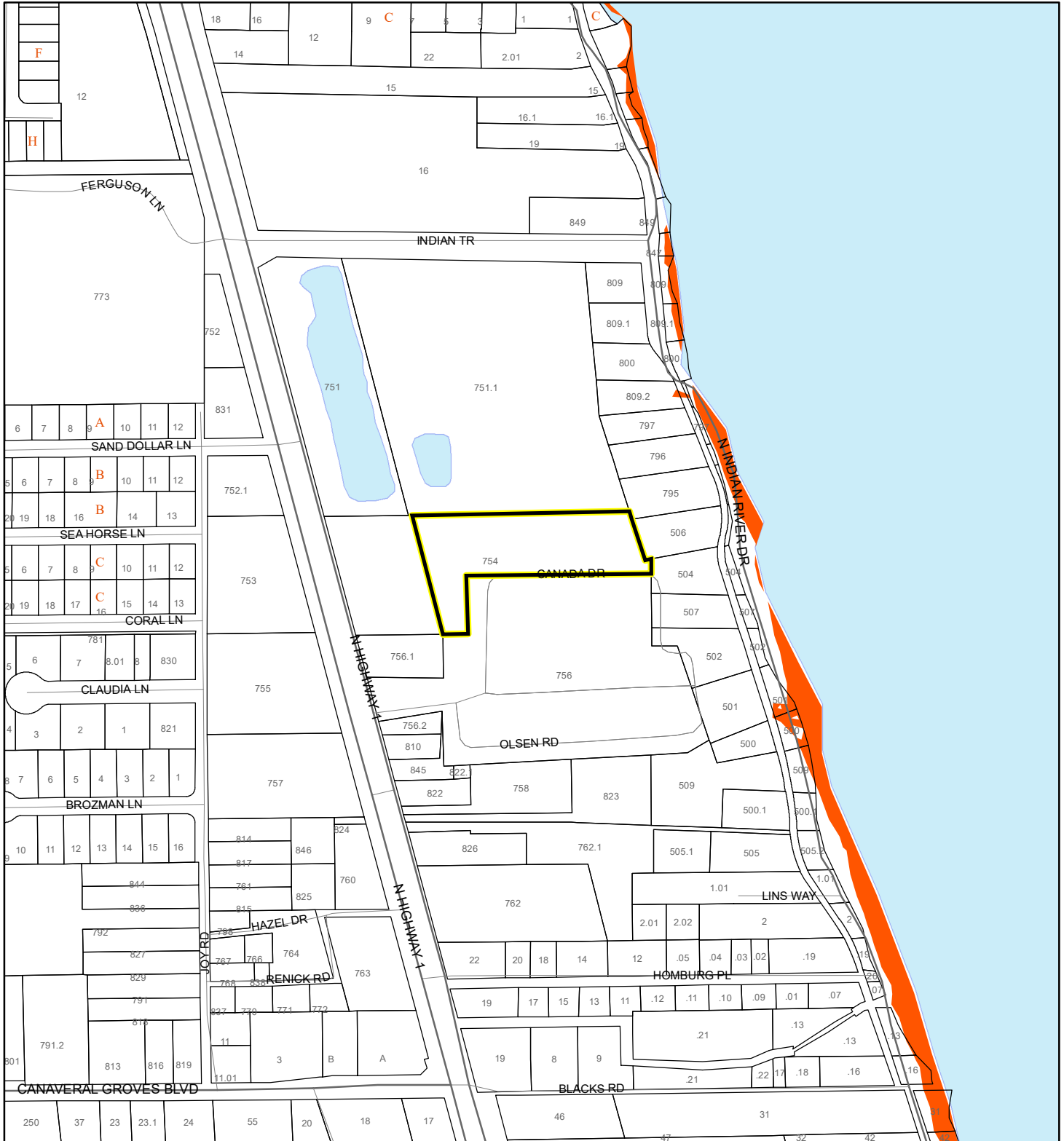
FEMA Flood Zones

- | | | |
|--|--|--|
| A | AO | X |
| AE | Open Water | |
| AH | VE | |
| Subject Property | Parcels | |

COASTAL HIGH HAZARD AREA MAP

IBRAHIM & HAROON REALESTATE INC

24SS00008



1:4,800 or 1 inch = 400 feet


This map was compiled from recorded documents and does not reflect an actual survey. The Brevard County Board of County Commissioners does not assume responsibility for errors or omissions hereon.

Produced by BoCC - GIS Date: 5/21/2024

 Subject Property

 Parcels

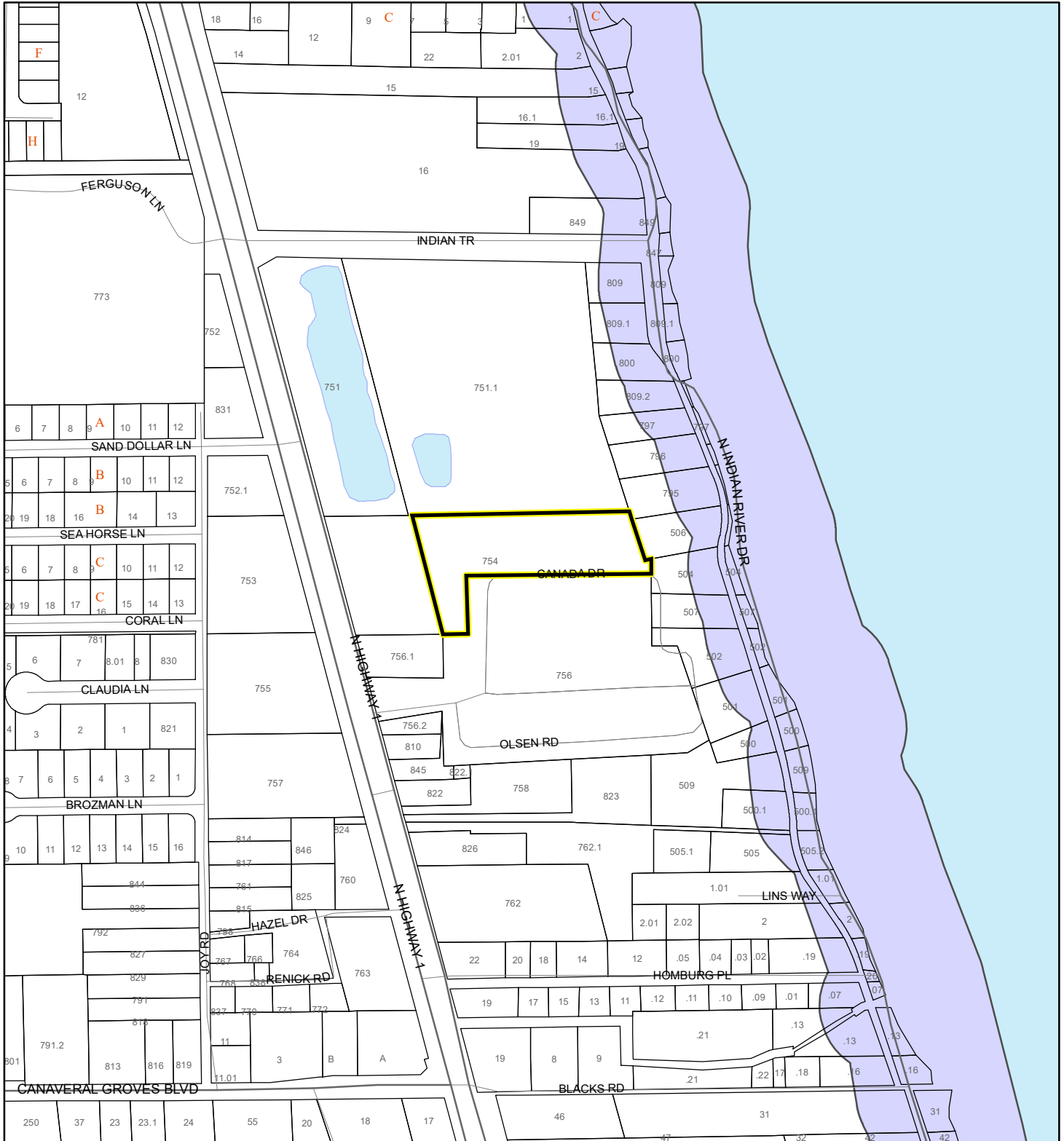
Coastal High Hazard Area

 SurgeZoneCat1

INDIAN RIVER LAGOON SEPTIC OVERLAY MAP

IBRAHIM & HAROON REALESTATE INC

24SS00008



1:4,800 or 1 inch = 400 feet

This map was compiled from recorded documents and does not reflect an actual survey. The Brevard County Board of County Commissioners does not assume responsibility for errors or omissions hereon.

Produced by BoCC - GIS Date: 5/21/2024

 Subject Property

 Parcels

Septic Overlay

 40 Meters

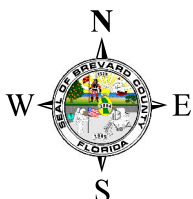
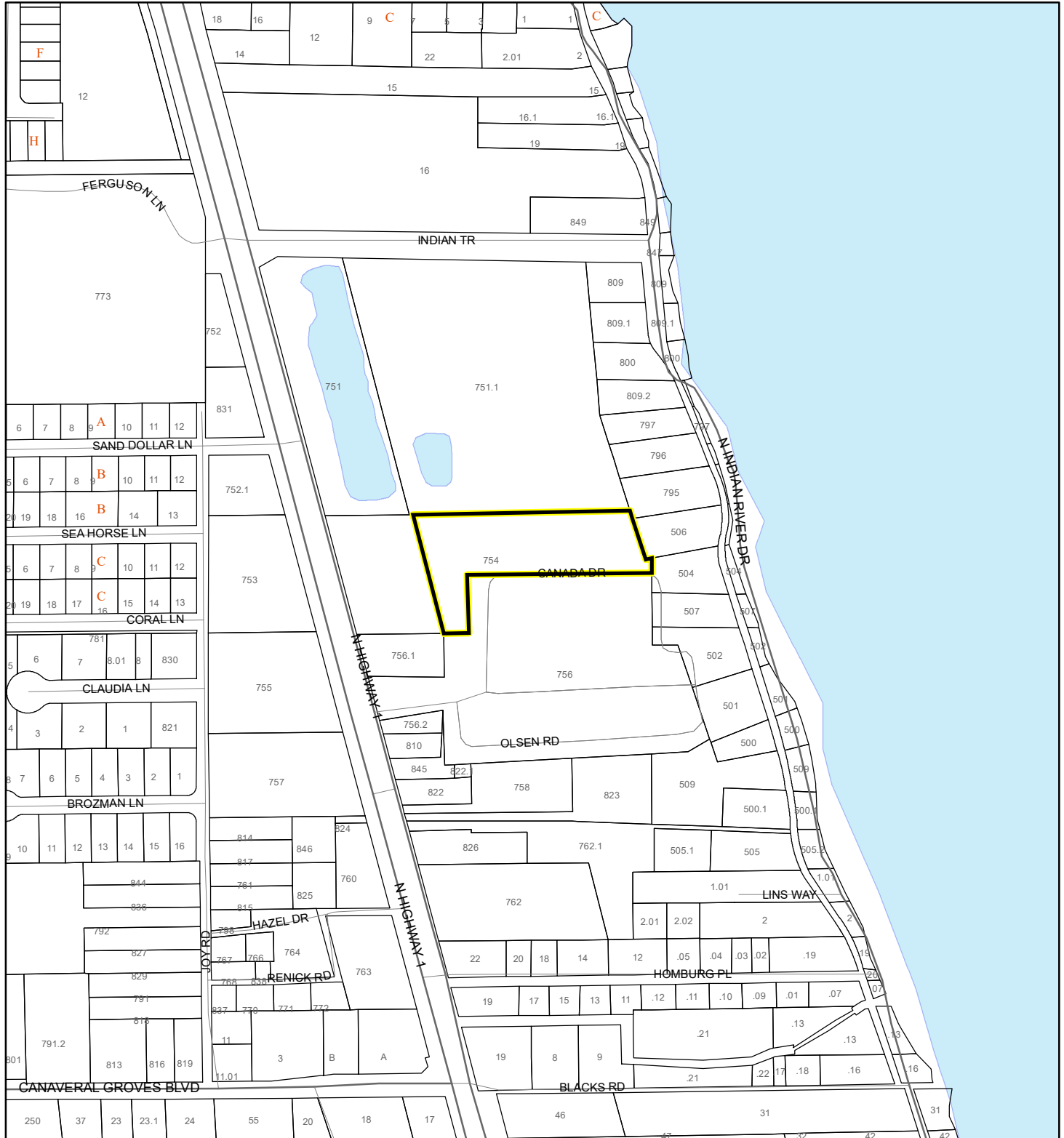
 60 Meters

 All Distances

EAGLE NESTS MAP

IBRAHIM & HAROON REALESTATE INC

24SS00008



1:4,800 or 1 inch = 400 feet

This map was compiled from recorded documents and does not reflect an actual survey. The Brevard County Board of County Commissioners does not assume responsibility for errors or omissions hereon.

Produced by BoCC - GIS Date: 5/21/2024

 Subject Property

 Parcels

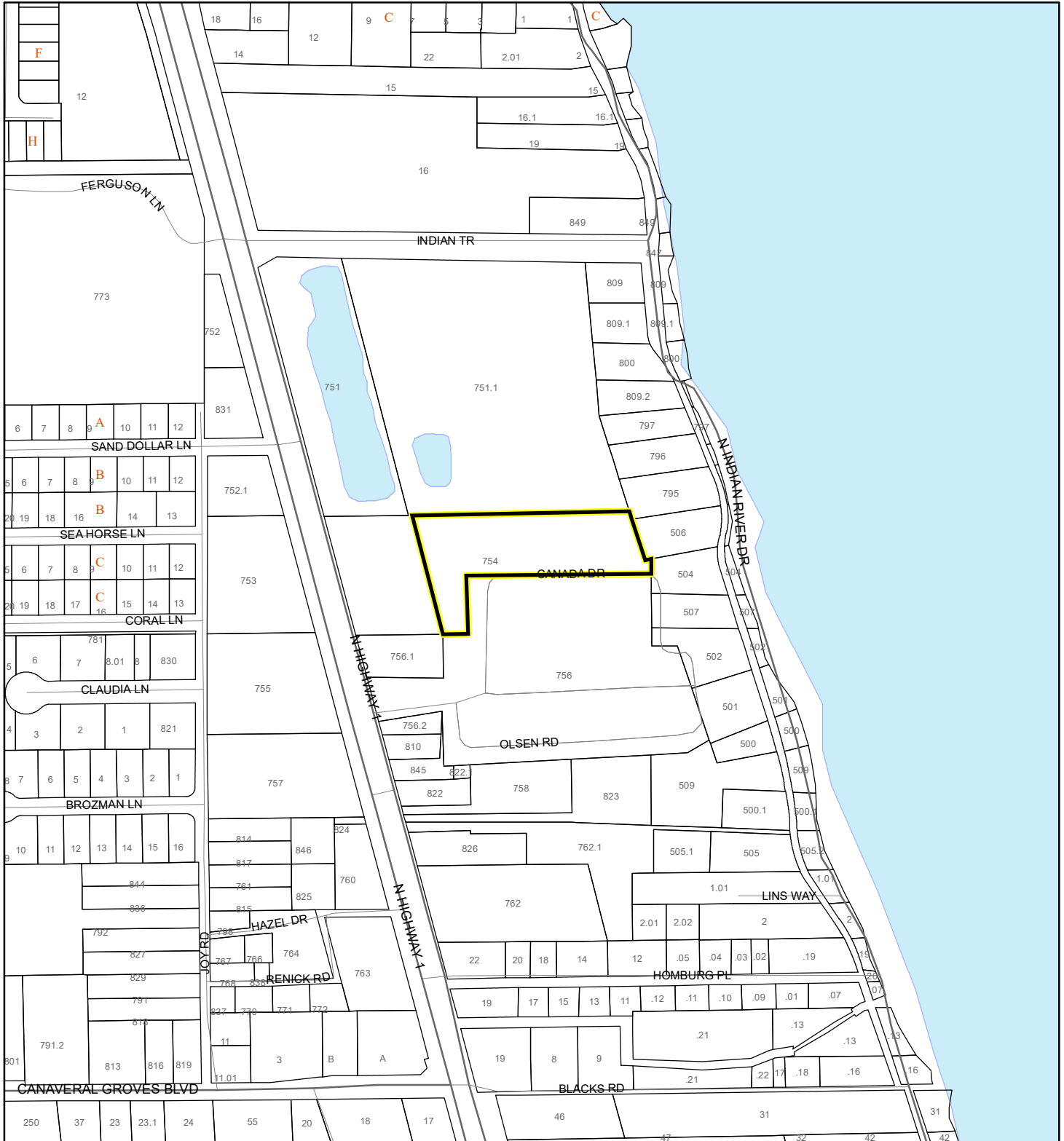


Eagle Nests
FWS

SCRUB JAY OCCUPANCY MAP

IBRAHIM & HAROON REALESTATE INC

24SS00008



1:4,800 or 1 inch = 400 feet

This map was compiled from recorded documents and does not reflect an actual survey. The Brevard County Board of County Commissioners does not assume responsibility for errors or omissions hereon.

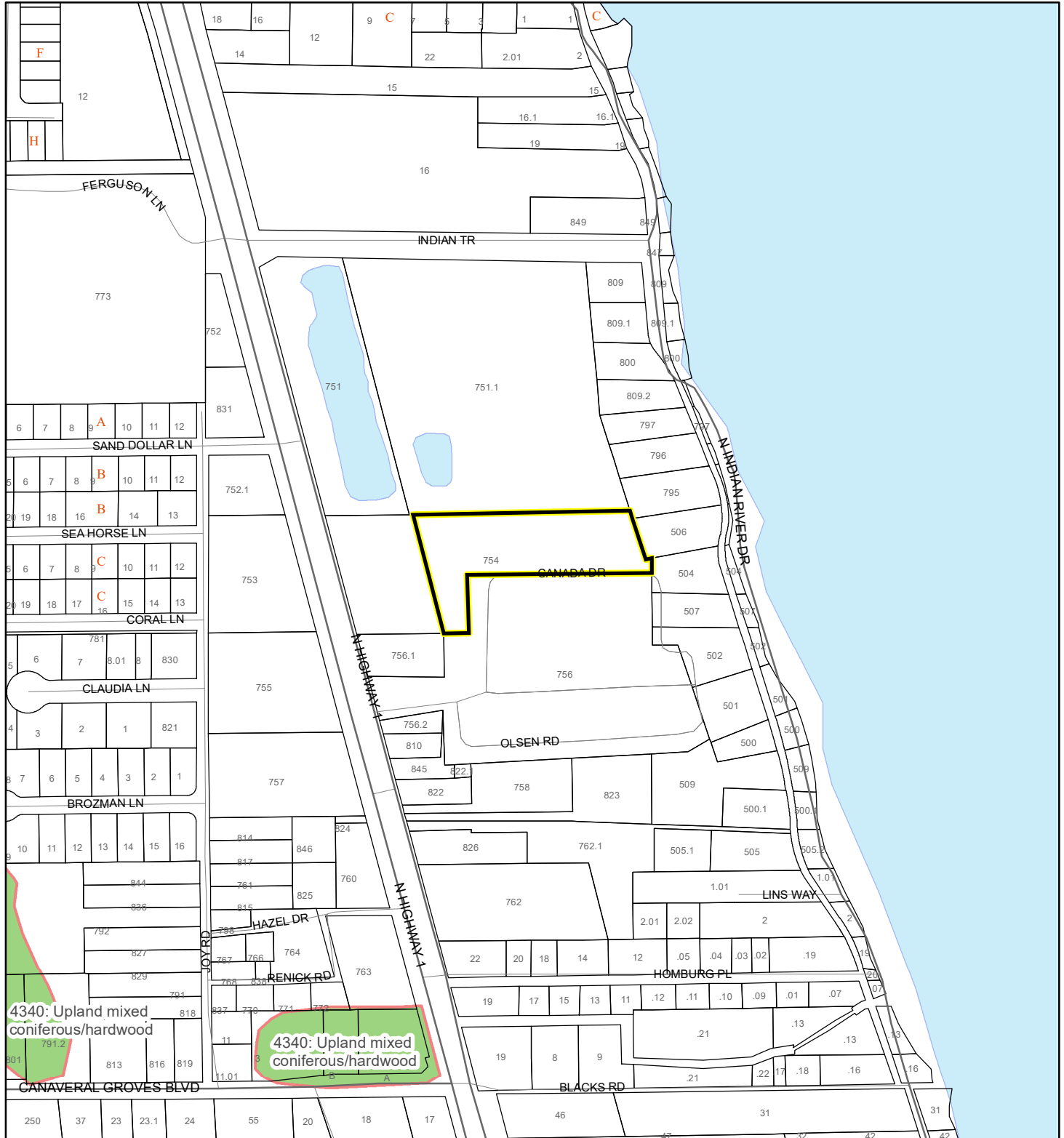
Produced by BoCC - GIS Date: 5/21/2024

- Subject Property
- Parcels
- Scrub Jay Occupancy

SJRWMD FLUCCS UPLAND FORESTS - 4000 Series MAP

IBRAHIM & HAROON REALESTATE INC

24SS00008



1:4,800 or 1 inch = 400 feet

This map was compiled from recorded documents and does not reflect an actual survey. The Brevard County Board of County Commissioners does not assume responsibility for errors or omissions hereon.

Produced by BoCC - GIS Date: 5/21/2024

SJRWMD FLUCCS Upland Forests

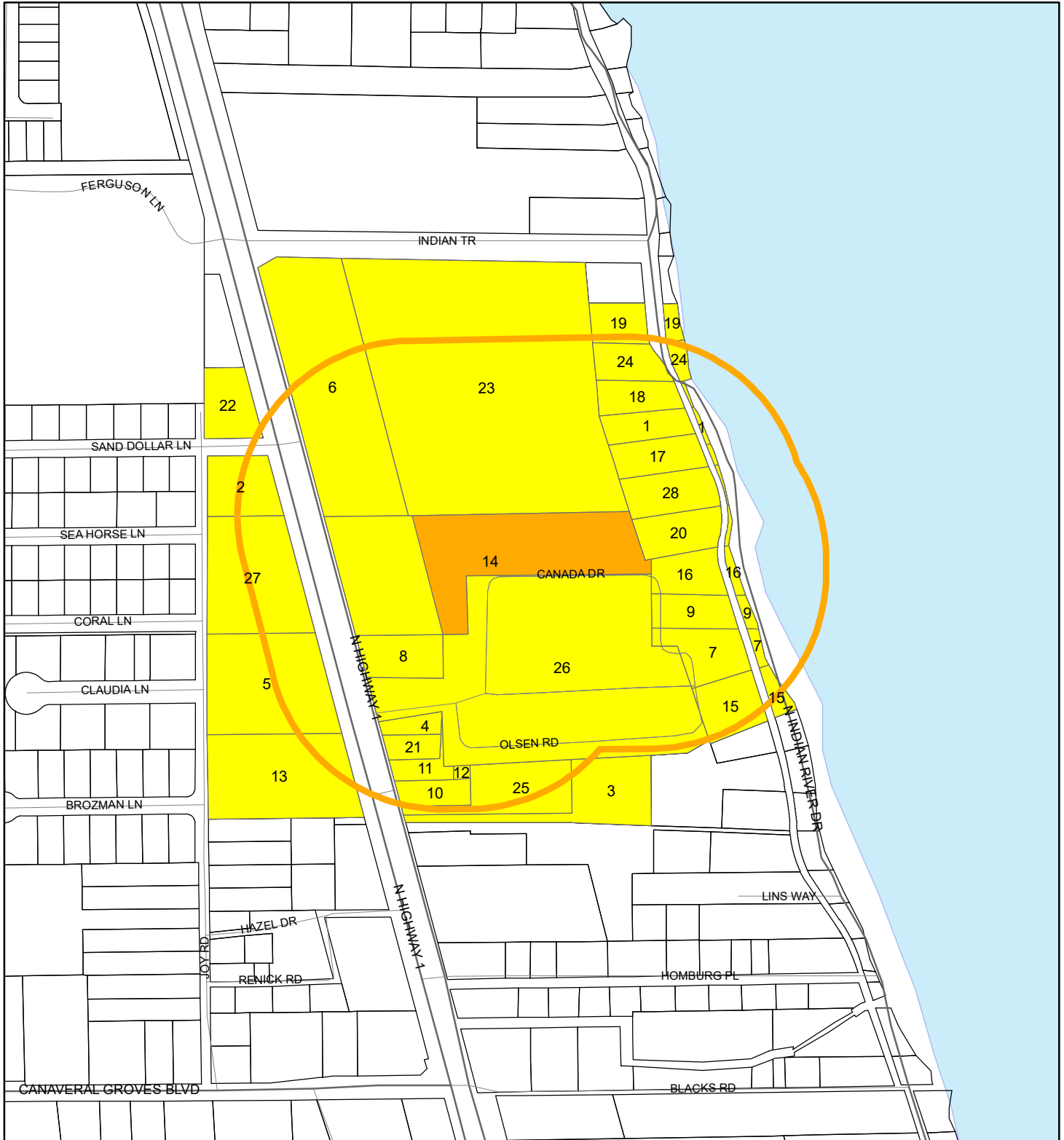
- Upland Coniferous Forest - 4100 Series
- Upland Hardwood Forest - 4200 Series
- Upland Mixed Forest - 4300 Series
- Tree Plantations - 4400 Series

Subject Property Parcels

RADIUS MAP

IBRAHIM & HAROON REALESTATE INC

24SS00008



1:4,800 or 1 inch = 400 feet

Buffer Distance: 500 feet

This map was compiled from recorded documents and does not reflect an actual survey. The Brevard County Board of County Commissioners does not assume responsibility for errors or omissions hereon.

Produced by BoCC - GIS Date: 5/21/2024

- Buffer
- Subject Property
- Notify Property
- Parcels