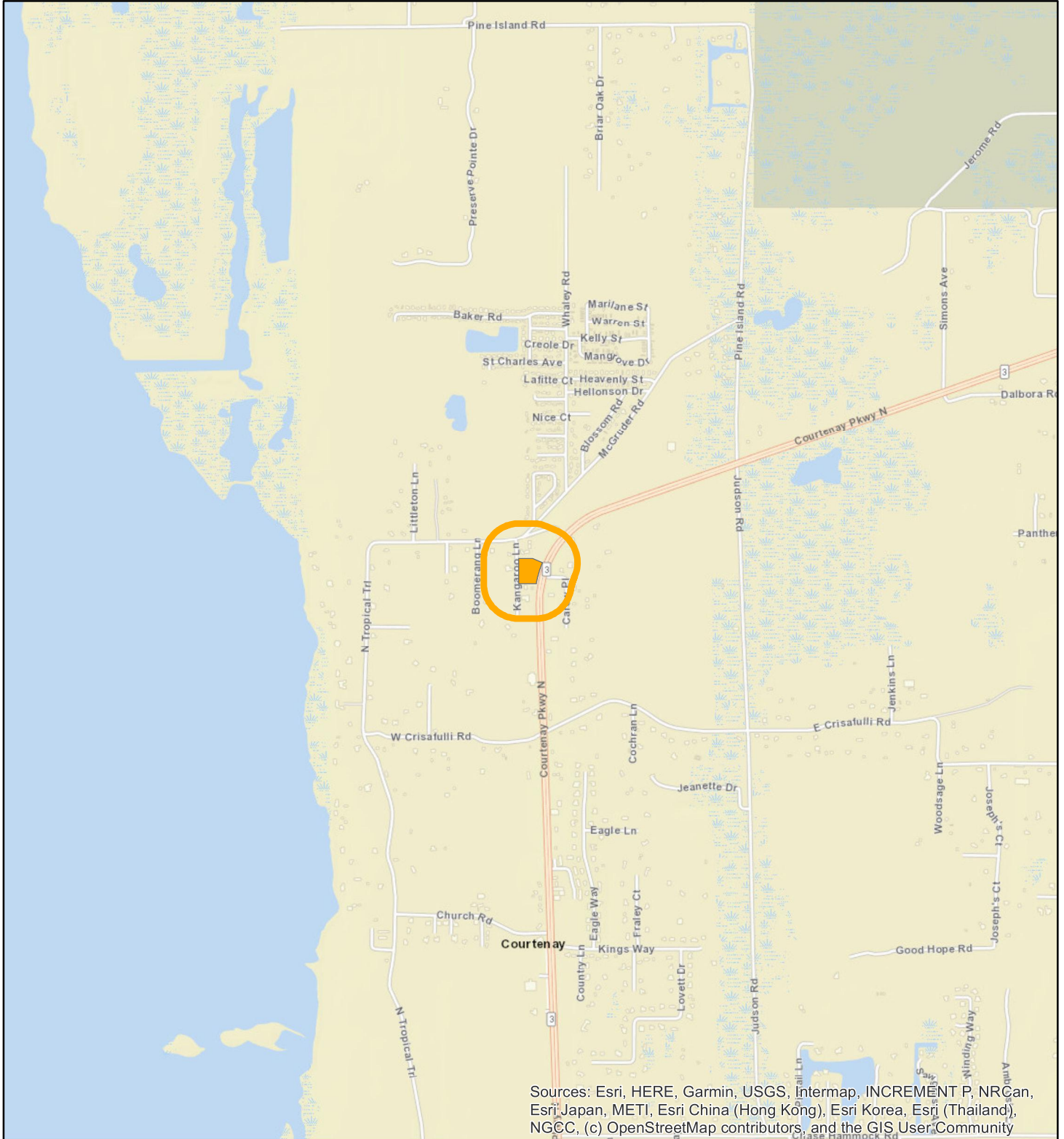
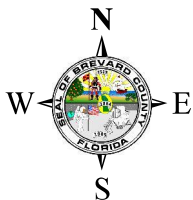


# LOCATION MAP

ABRS LLC  
26Z00024



Sources: Esri, HERE, Garmin, USGS, Intermap, INCREMENT P, NRCan, Esri Japan, METI, Esri China (Hong Kong), Esri Korea, Esri (Thailand), NGCC, (c) OpenStreetMap contributors, and the GIS User Community





1:24,000 or 1 inch = 2,000 feet

Buffer Distance: 500 feet

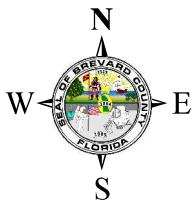
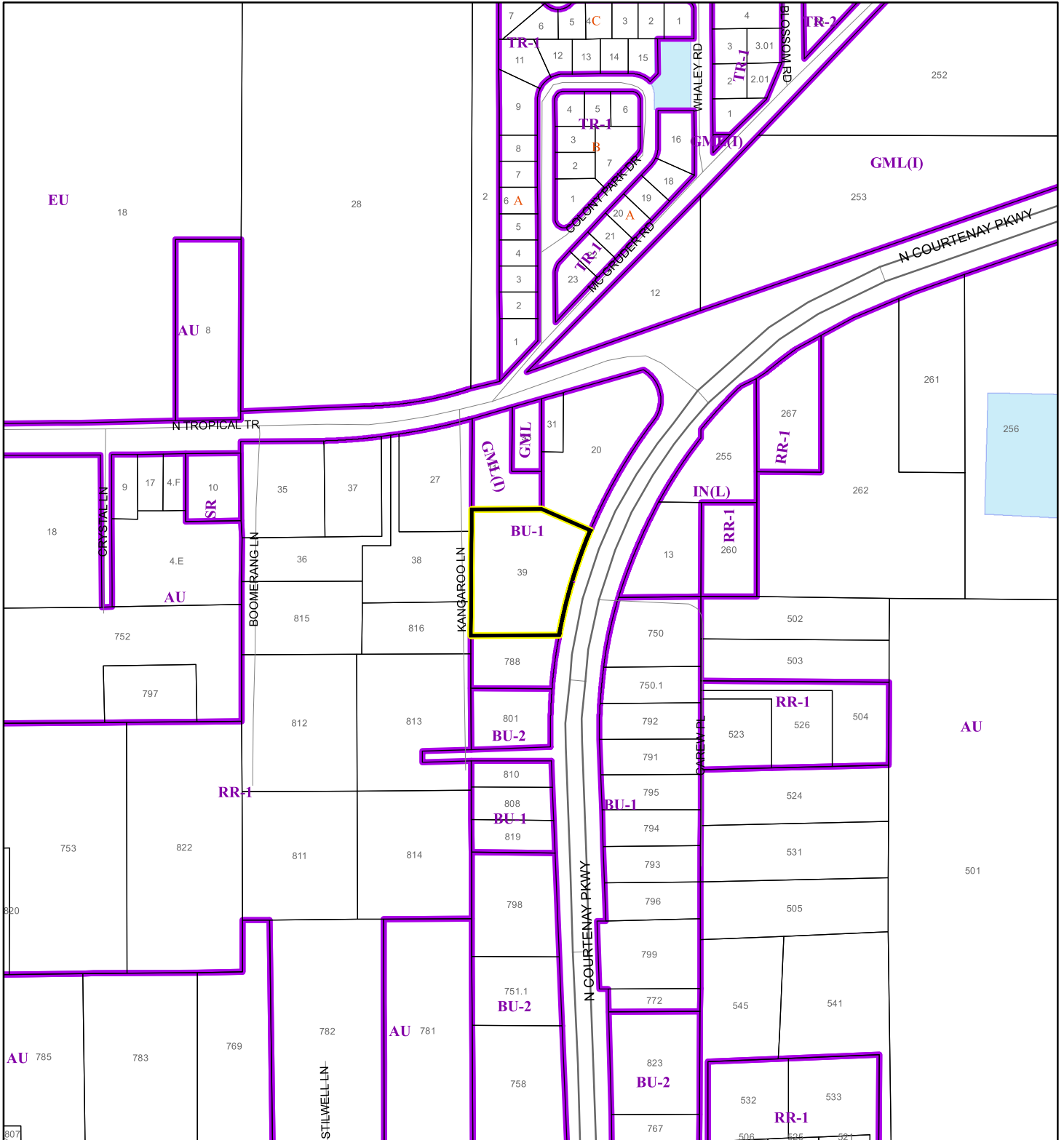
This map was compiled from recorded documents and does not reflect an actual survey. The Brevard County Board of County Commissioners does not assume responsibility for errors or omissions hereon.

Produced by BoCC - GIS Date: 5/4/2026

-  Buffer
-  Subject Property

# ZONING MAP

ABRS LLC  
26Z00024



1:4,800 or 1 inch = 400 feet

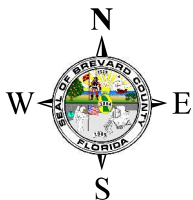
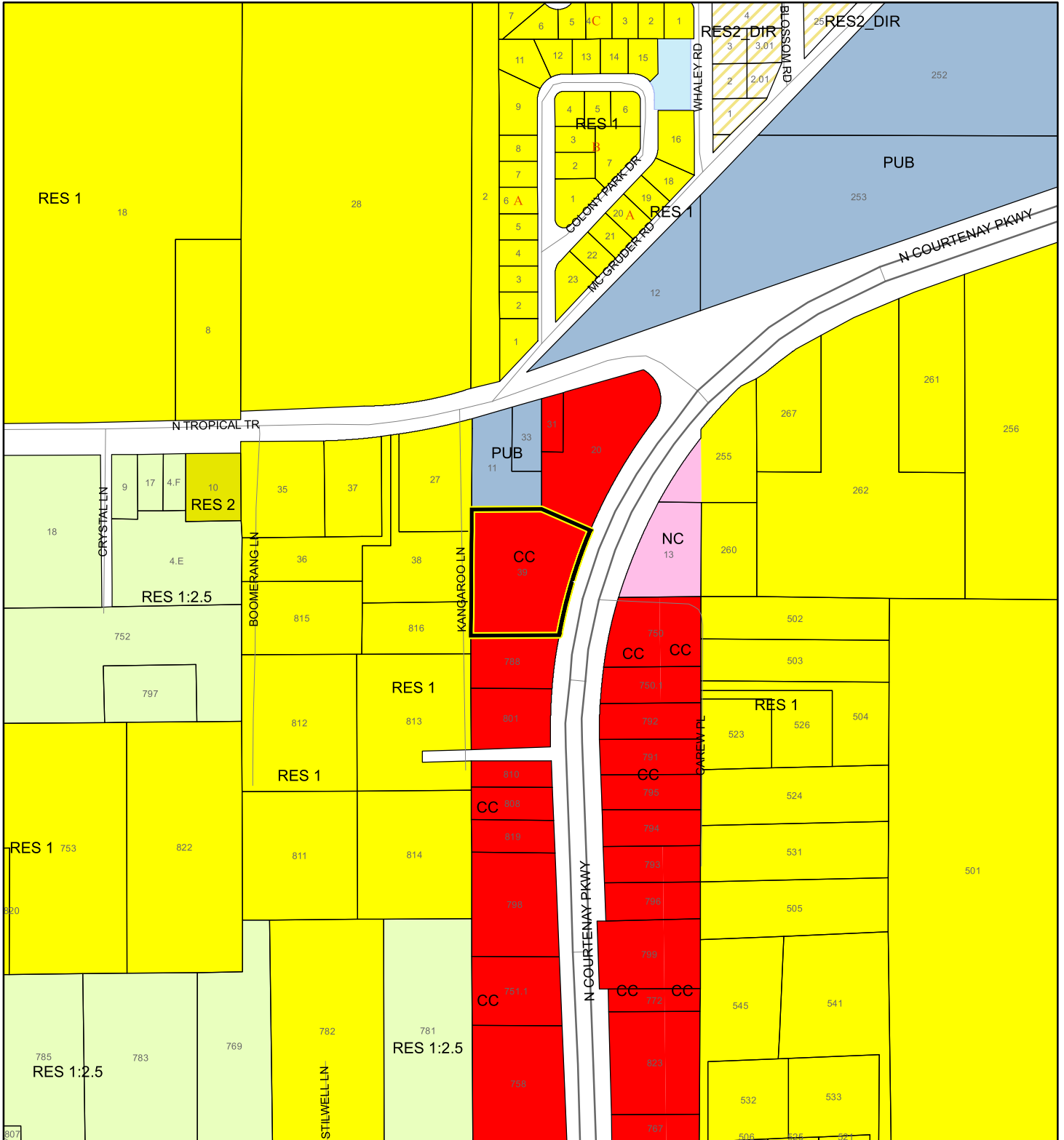
This map was compiled from recorded documents and does not reflect an actual survey. The Brevard County Board of County Commissioners does not assume responsibility for errors or omissions hereon.

Produced by BoCC - GIS Date: 5/4/2026



- Subject Property
- Parcels
- Zoning

# FUTURE LAND USE MAP

ABRS LLC  
26Z00024



1:4,800 or 1 inch = 400 feet

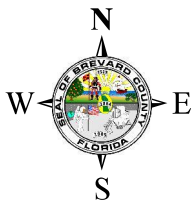
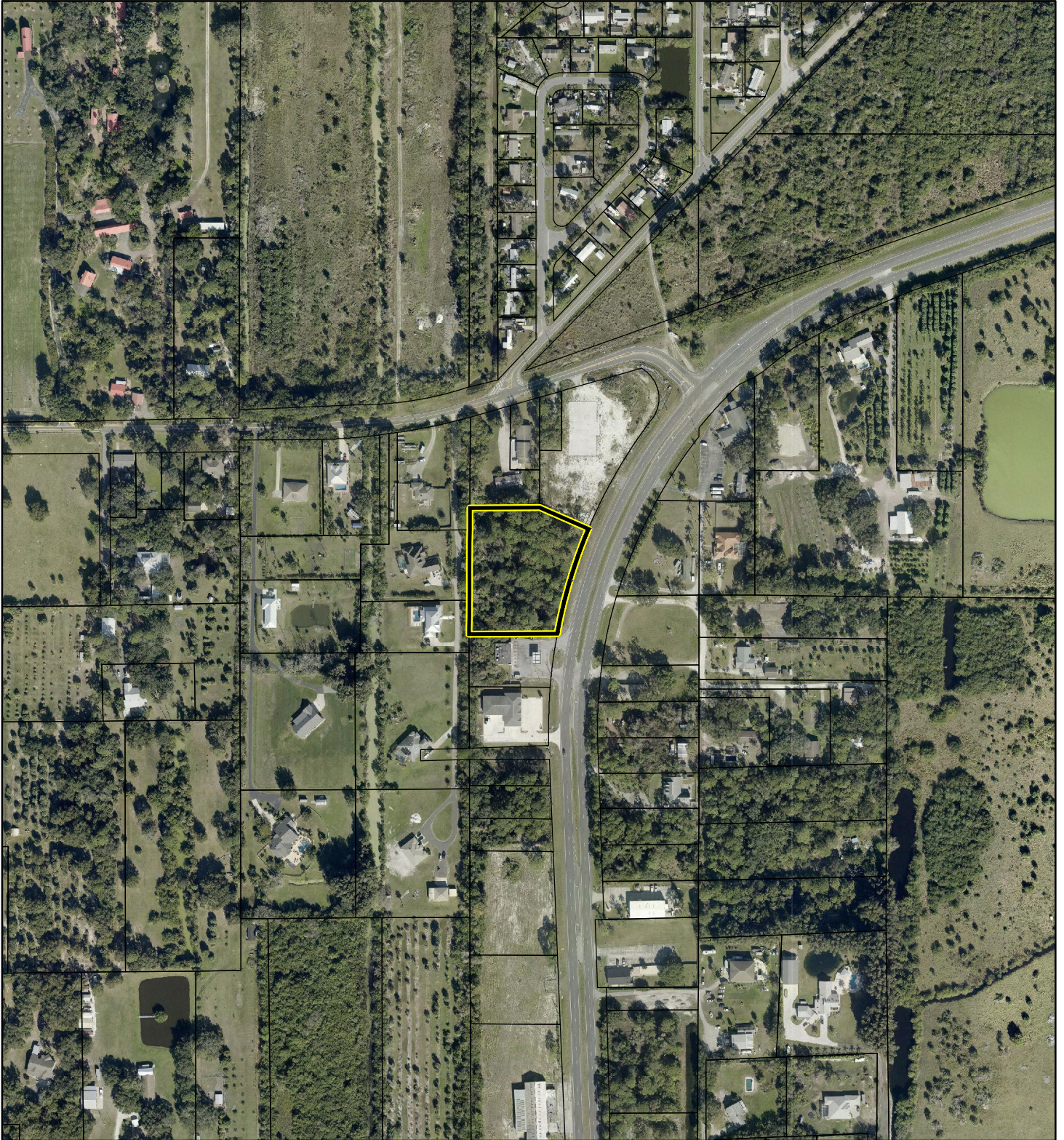
 Subject Property  
 Parcels

This map was compiled from recorded documents and does not reflect an actual survey. The Brevard County Board of County Commissioners does not assume responsibility for errors or omissions hereon.

Produced by BoCC - GIS Date: 5/4/2026

# AERIAL MAP

ABRS LLC  
26Z00024




1:4,800 or 1 inch = 400 feet

PHOTO YEAR: 2026

This map was compiled from recorded documents and does not reflect an actual survey. The Brevard County Board of County Commissioners does not assume responsibility for errors or omissions hereon.

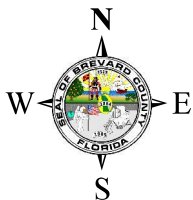
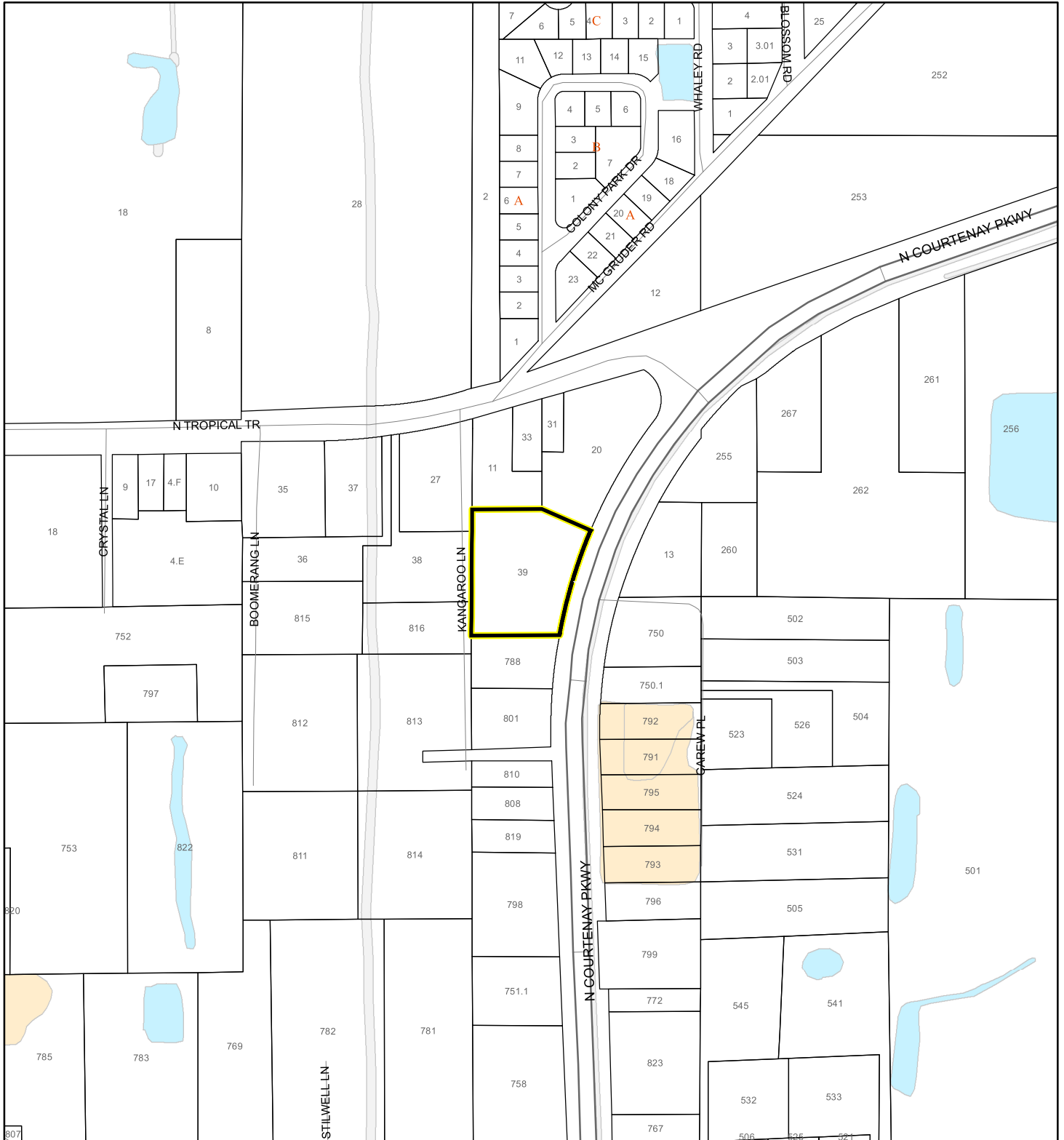
Produced by BoCC - GIS Date: 5/4/2026

 Subject Property

 Parcels

# NWI WETLANDS MAP

ABRS LLC  
26Z00024

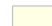




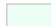






1:4,800 or 1 inch = 400 feet

This map was compiled from recorded documents and does not reflect an actual survey. The Brevard County Board of County Commissioners does not assume responsibility for errors or omissions hereon.

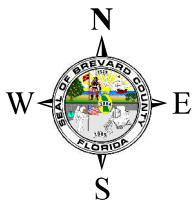
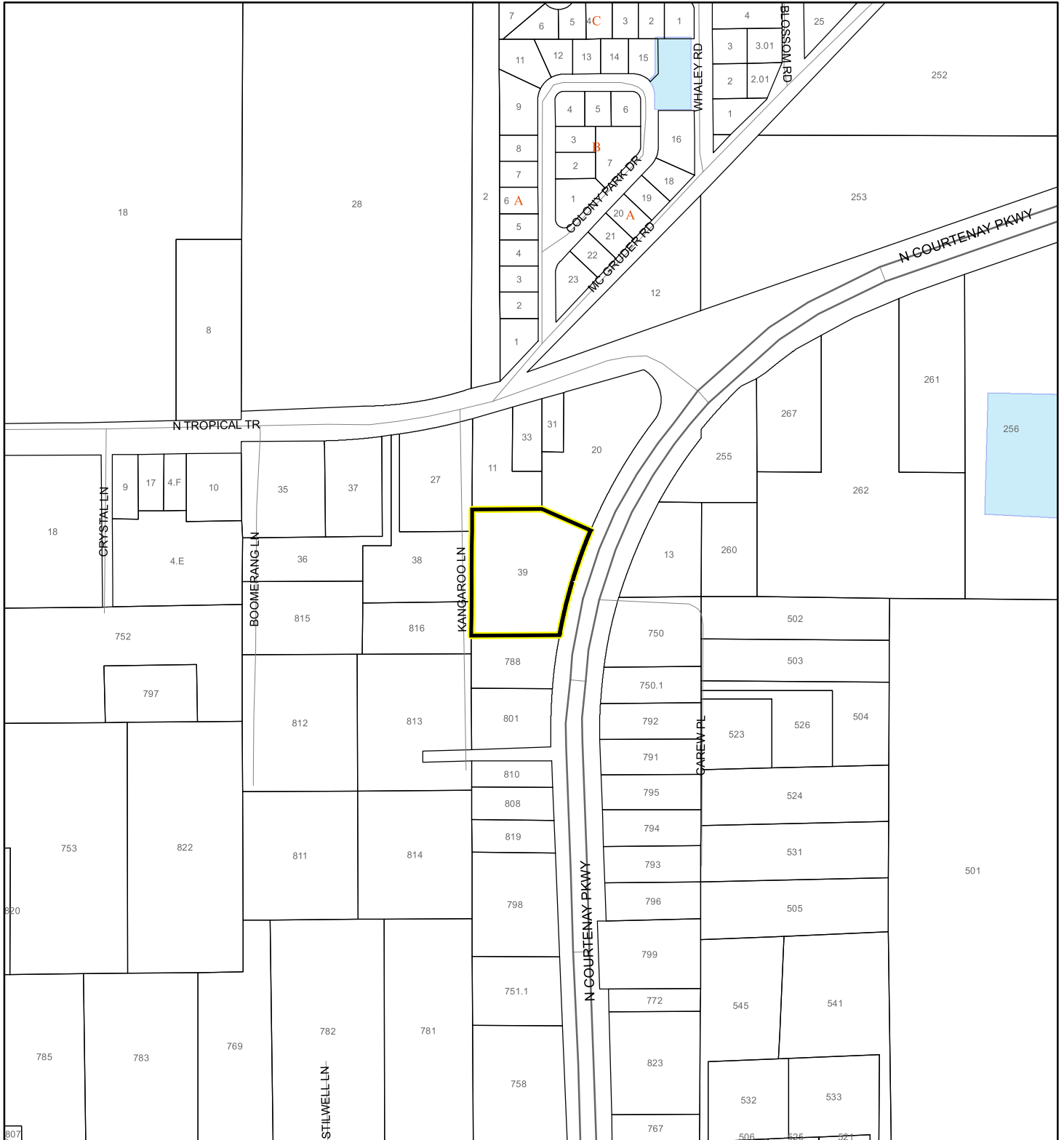
Produced by BoCC - GIS Date: 5/4/2026

## National Wetlands Inventory (NWI)

- |  |  |
|--|--|
|  Estuarine and Marine Deepwater    |  Freshwater Pond  |
|  Estuarine and Marine Wetland      |  Lake             |
|  Freshwater Emergent Wetland       |  Other            |
|  Freshwater Forested/Shrub Wetland |  Riverine         |
|  |  Subject Property |
|  |  Parcels          |

# SJRWMD FLUCCS WETLANDS - 6000 Series MAP

ABRS LLC  
26Z00024



1:4,800 or 1 inch = 400 feet

This map was compiled from recorded documents and does not reflect an actual survey. The Brevard County Board of County Commissioners does not assume responsibility for errors or omissions hereon.

Produced by BoCC - GIS Date: 5/4/2026

## SJRWMD FLUCCS WETLANDS

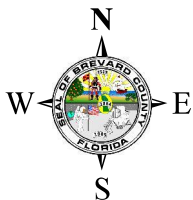
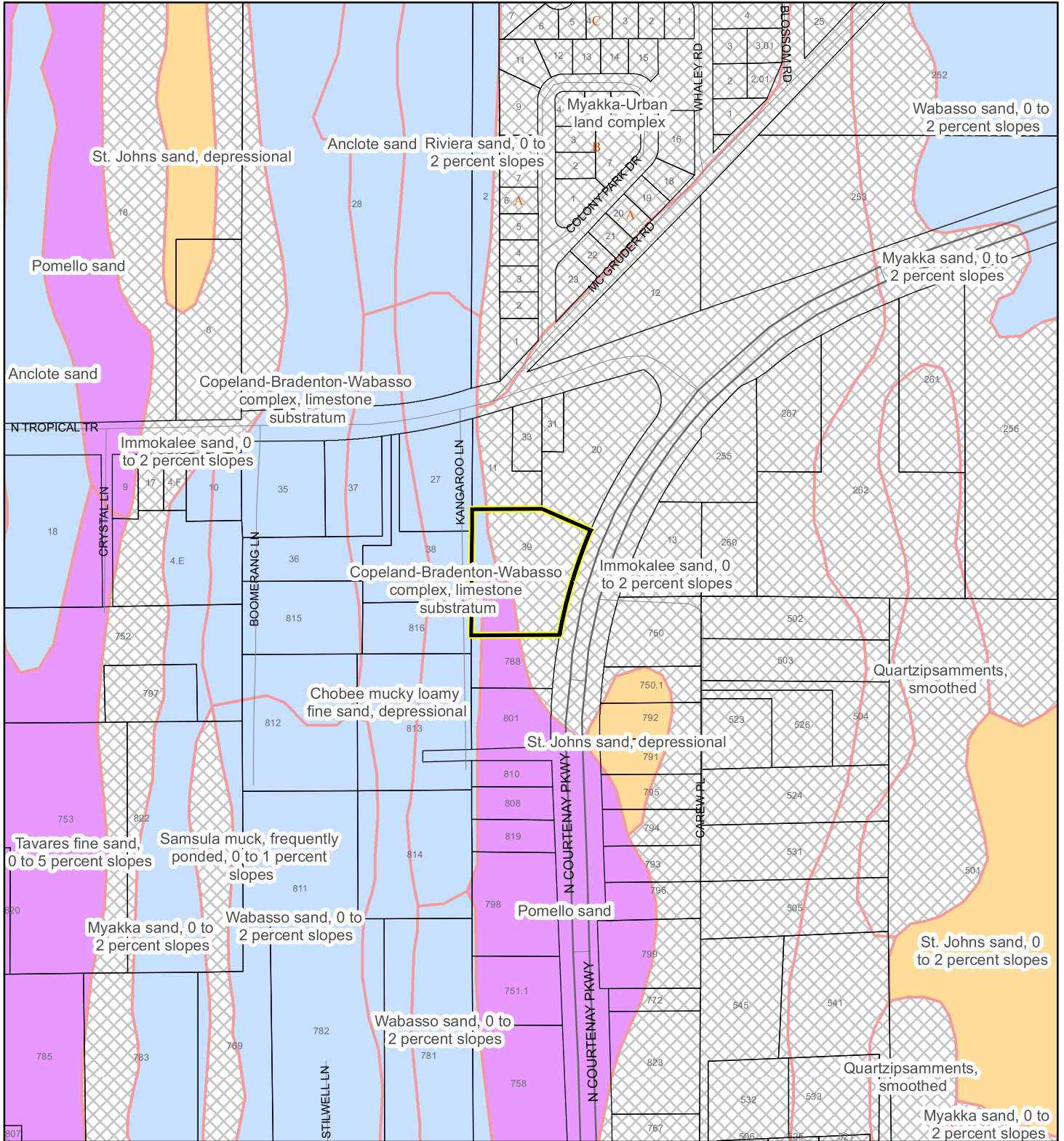
- Wetland Hardwood Forests - Series 6100
- Wetland Coniferous Forest - Series 6200
- Wetland Forested Mixed - Series 6300
- Vegetated Non-Forested Wetlands - Series 6400
- Non-Vegetated Wetland - Series 6500

Subject Property

Parcels

# USDA SCSSS SOILS MAP

ABRS LLC  
26Z00024



1:4,800 or 1 inch = 400 feet

This map was compiled from recorded documents and does not reflect an actual survey. The Brevard County Board of County Commissioners does not assume responsibility for errors or omissions hereon.

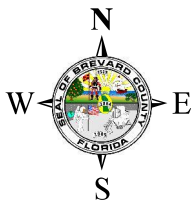
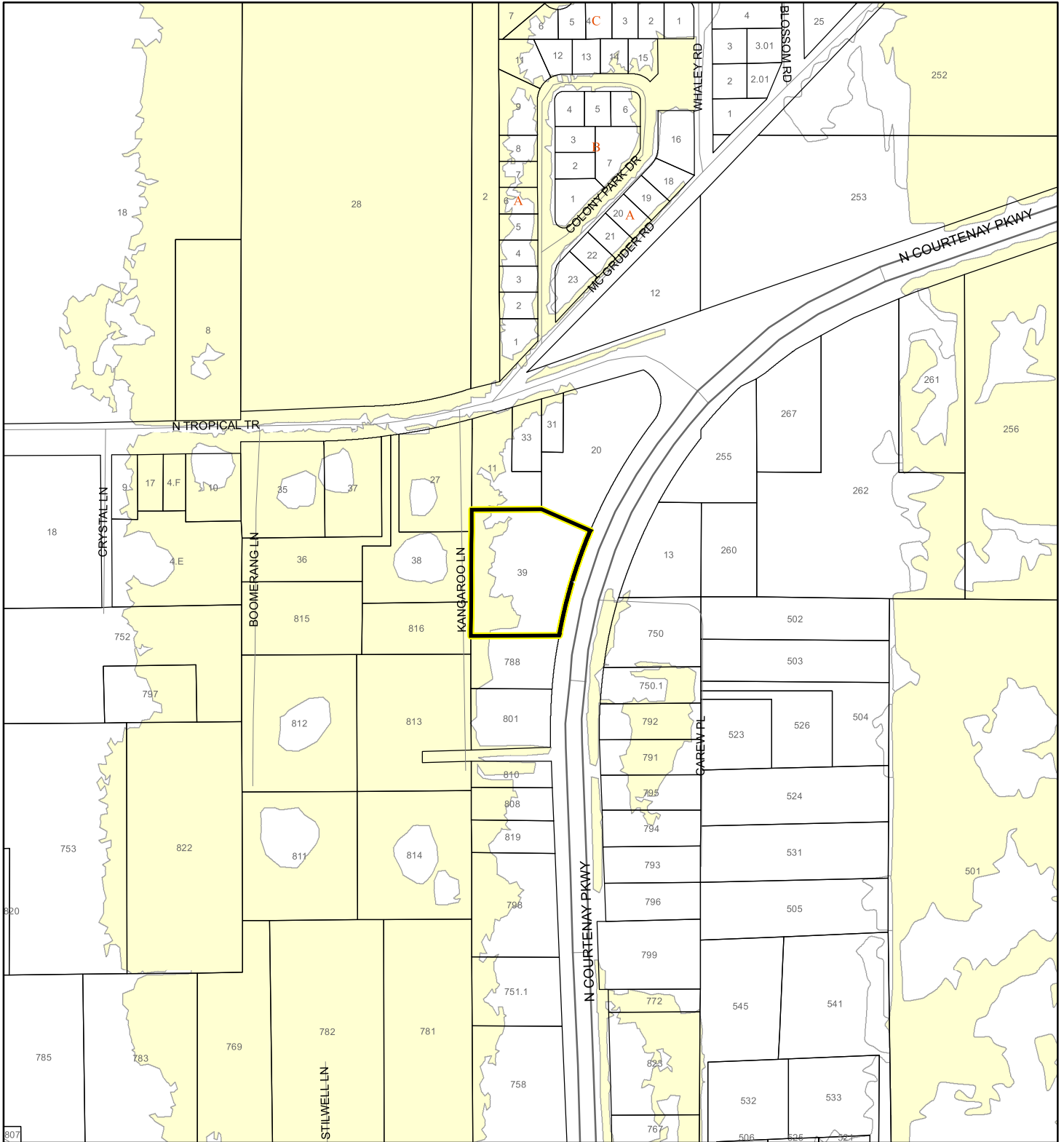
Produced by BoCC - GIS Date: 5/4/2026

## USDA SCSSS Soils

- Aquifer and Hydric
- Aquifer
- Hydric
- None
- Subject Property
- Parcels

# FEMA FLOOD ZONES MAP

ABRS LLC  
26Z00024



1:4,800 or 1 inch = 400 feet

This map was compiled from recorded documents and does not reflect an actual survey. The Brevard County Board of County Commissioners does not assume responsibility for errors or omissions hereon.

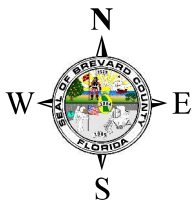
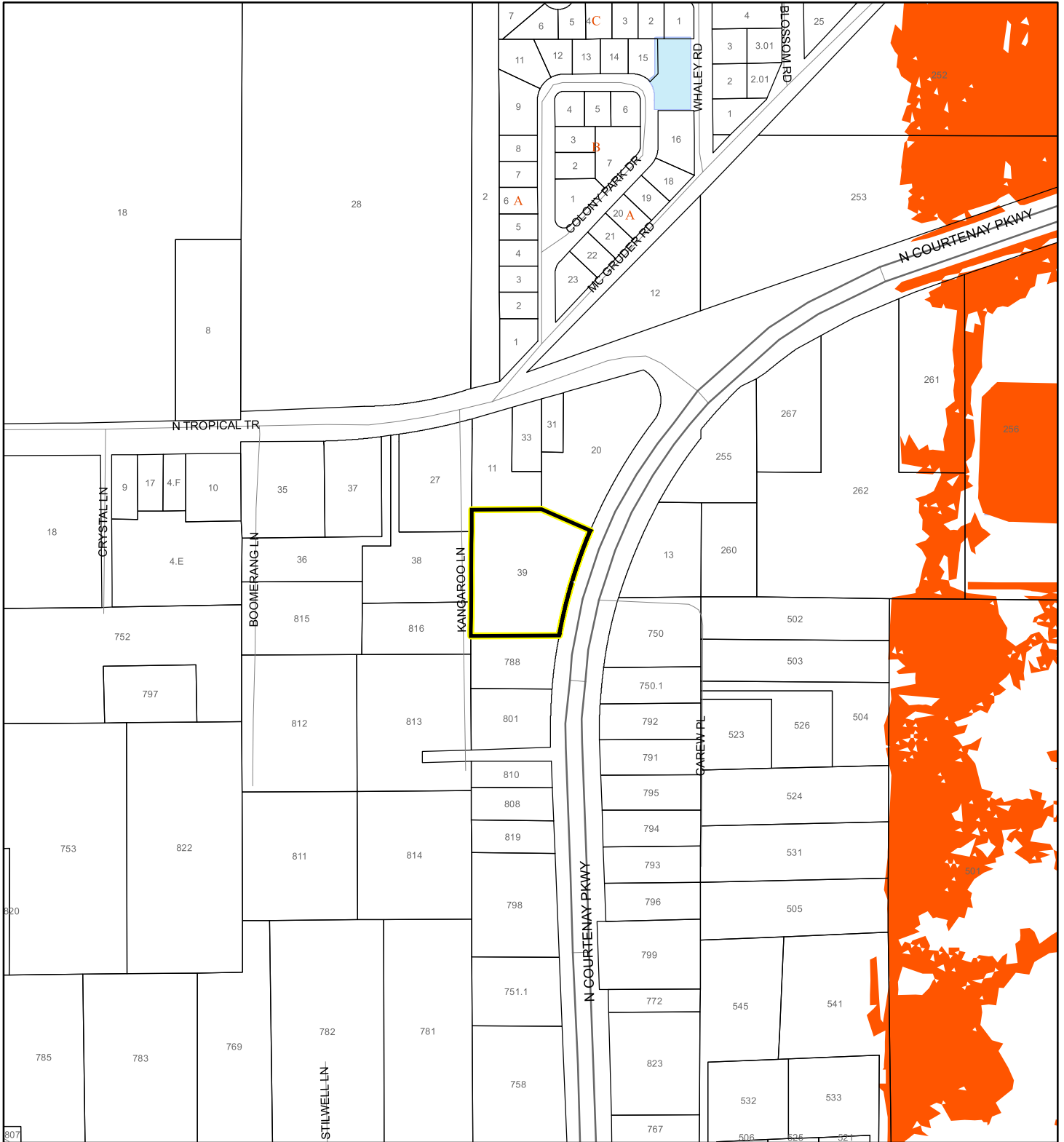
Produced by BoCC - GIS Date: 5/4/2026

### FEMA Flood Zones

- |                  |            |   |
|------------------|------------|---|
| A                | AO         | X |
| AE               | Open Water |   |
| AH               | VE         |   |
| Subject Property | Parcels    |   |

# COASTAL HIGH HAZARD AREA MAP

ABRS LLC  
26Z00024



1:4,800 or 1 inch = 400 feet

This map was compiled from recorded documents and does not reflect an actual survey. The Brevard County Board of County Commissioners does not assume responsibility for errors or omissions hereon.

Produced by BoCC - GIS Date: 5/4/2026

 Subject Property

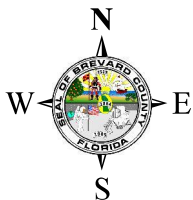
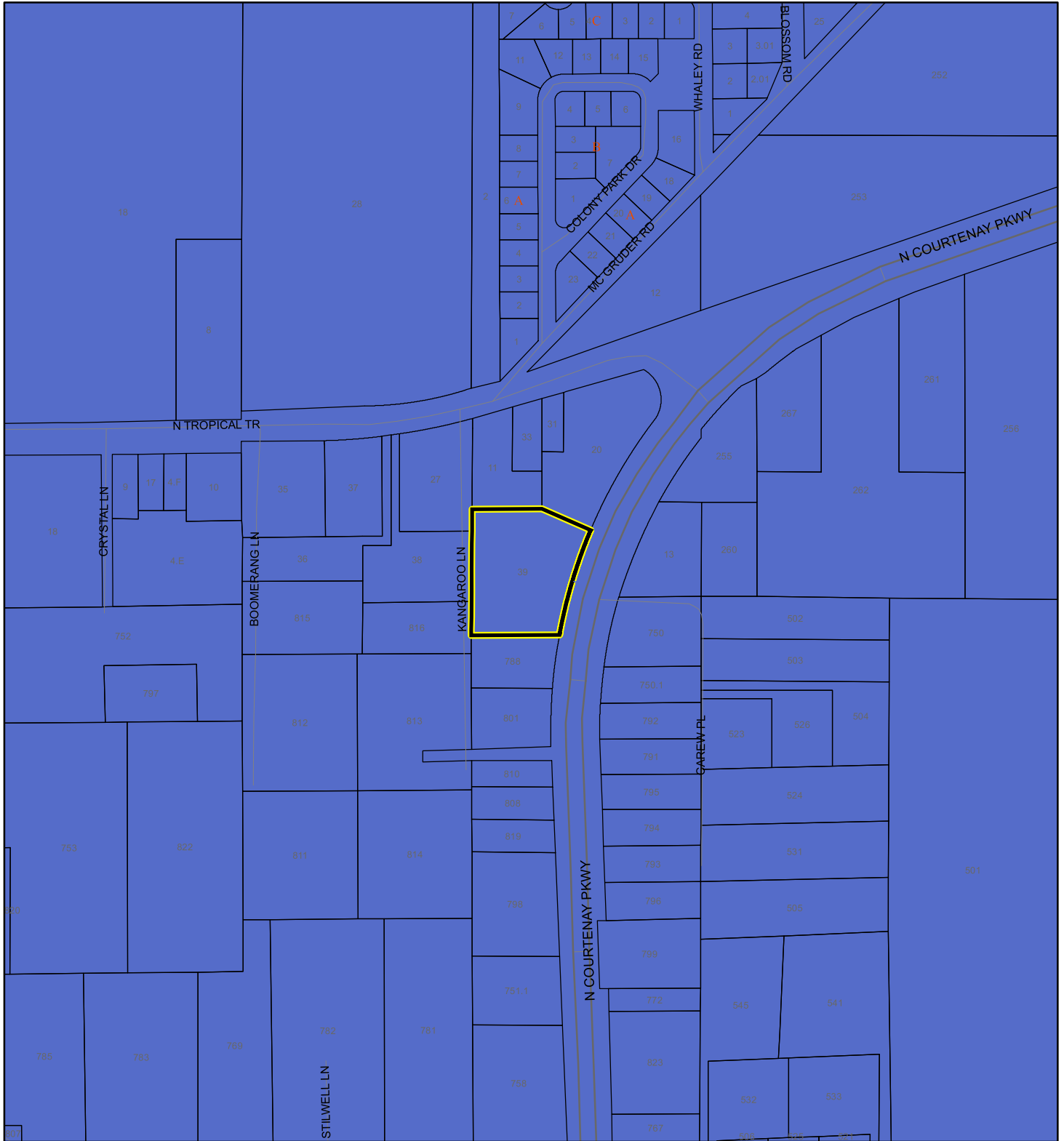
 Parcels

**Coastal High Hazard Area**

 SurgeZoneCat1

# INDIAN RIVER LAGOON SEPTIC OVERLAY MAP


ABRS LLC  
26Z00024



1:4,800 or 1 inch = 400 feet

This map was compiled from recorded documents and does not reflect an actual survey. The Brevard County Board of County Commissioners does not assume responsibility for errors or omissions herein.

Produced by BoCC - GIS Date: 5/4/2026

 Subject Property

 Parcels

**Septic Overlay**

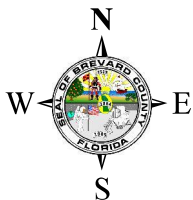
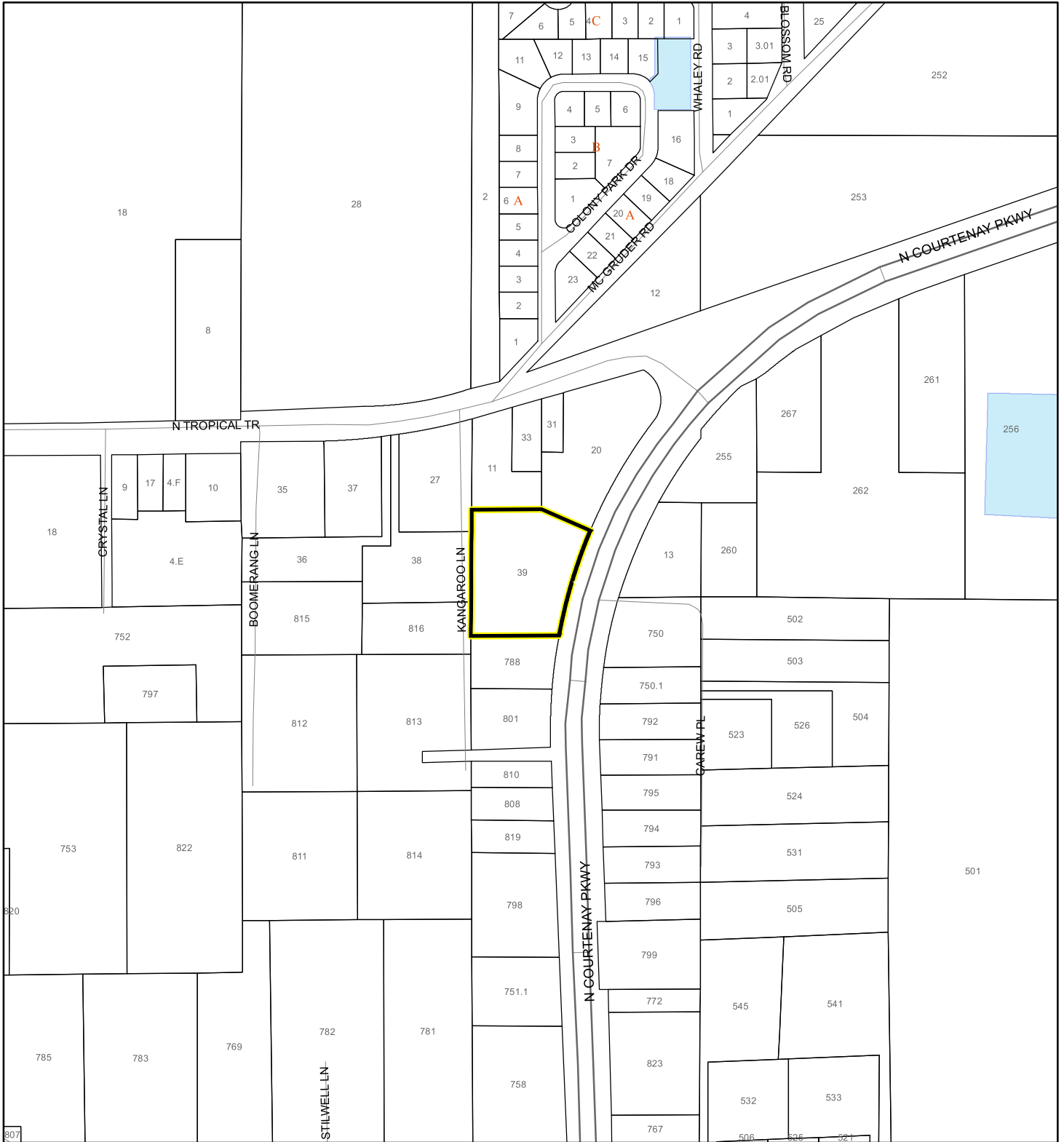
 40 Meters

 60 Meters

 All Distances

# EAGLE NESTS MAP

ABRS LLC  
26Z00024



1:4,800 or 1 inch = 400 feet

This map was compiled from recorded documents and does not reflect an actual survey. The Brevard County Board of County Commissioners does not assume responsibility for errors or omissions herein.

Produced by BoCC - GIS Date: 5/4/2026

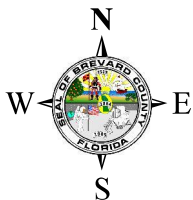
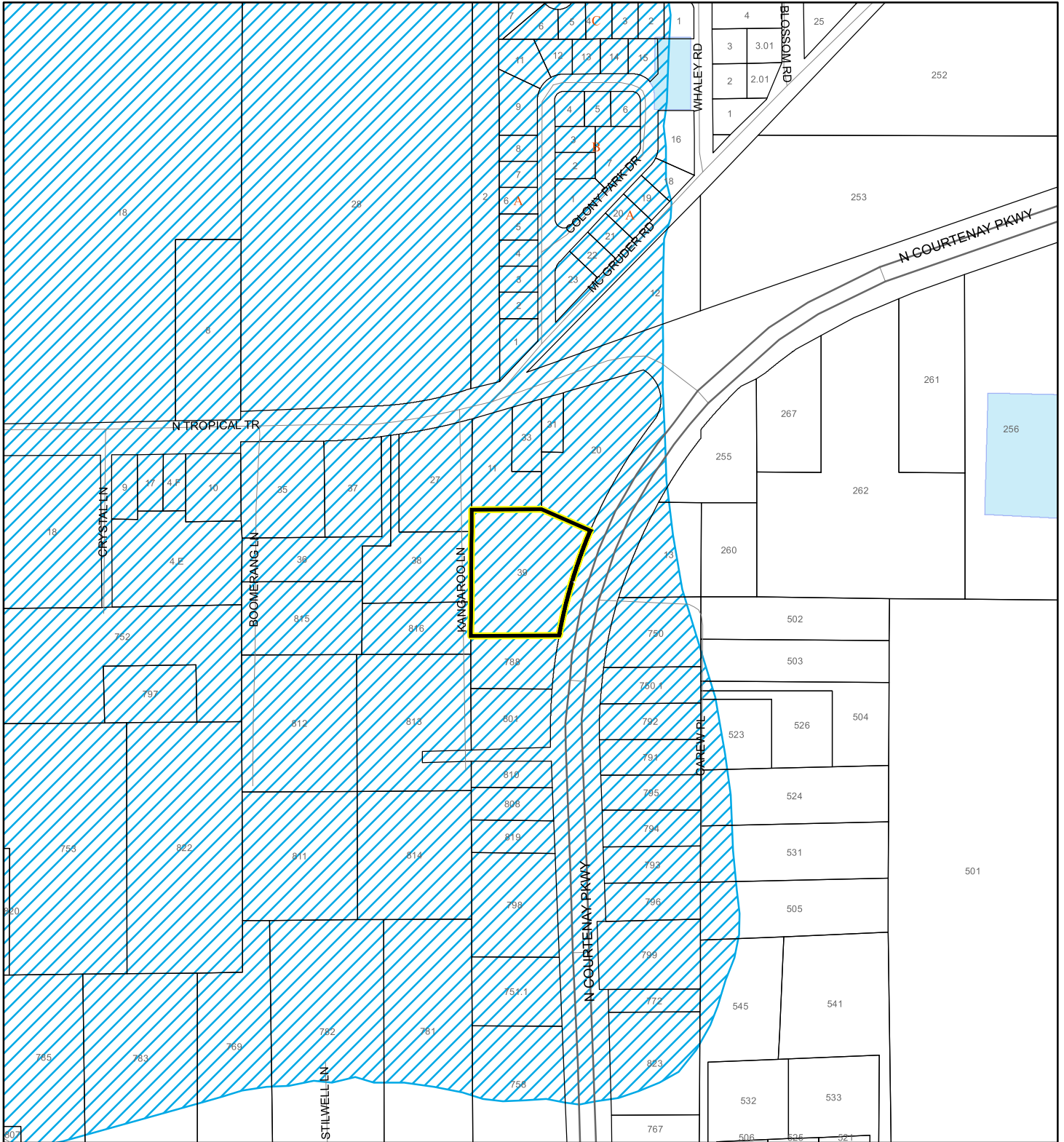
 Subject Property

 Parcels

 Eagle Nests  
FWS

# SCRUB JAY OCCUPANCY MAP


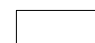

ABRS LLC  
26Z00024



1:4,800 or 1 inch = 400 feet

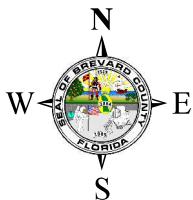
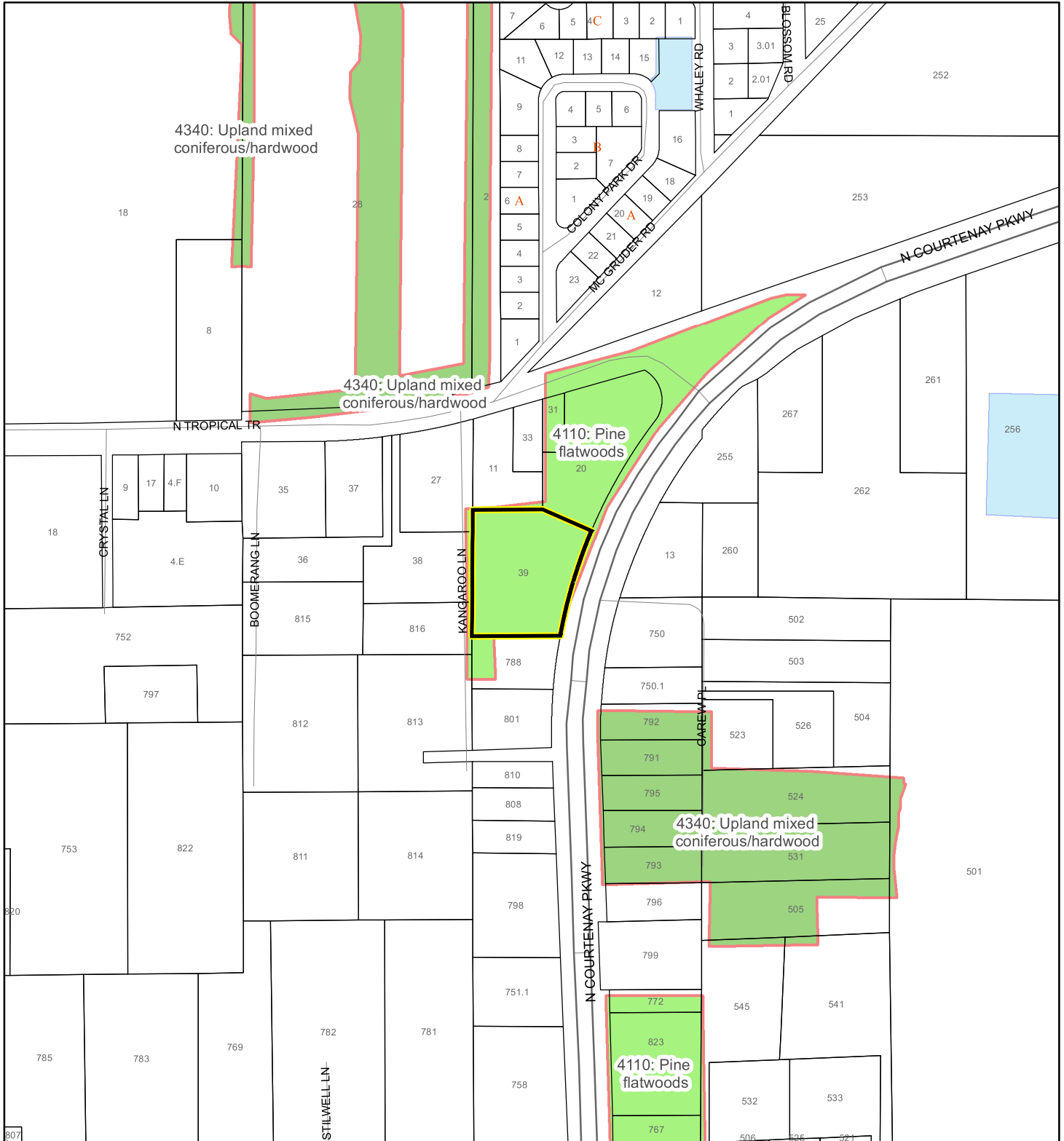
This map was compiled from recorded documents and does not reflect an actual survey. The Brevard County Board of County Commissioners does not assume responsibility for errors or omissions hereon.

Produced by BoCC - GIS Date: 5/4/2026

-  Subject Property
-  Parcels
-  Scrub Jay Occupancy

# SJRWMD FLUCCS UPLAND FORESTS - 4000 Series MAP

ABRS LLC  
26Z00024



1:4,800 or 1 inch = 400 feet

This map was compiled from recorded documents and does not reflect an actual survey. The Brevard County Board of County Commissioners does not assume responsibility for errors or omissions hereon.

Produced by BoCC - GIS Date: 5/4/2026

## SJRWMD FLUCCS Upland Forests

- Upland Coniferous Forest - 4100 Series
- Upland Hardwood Forest - 4200 Series
- Upland Mixed Forest - 4300 Series
- Tree Plantations - 4400 Series

Subject Property

Parcels