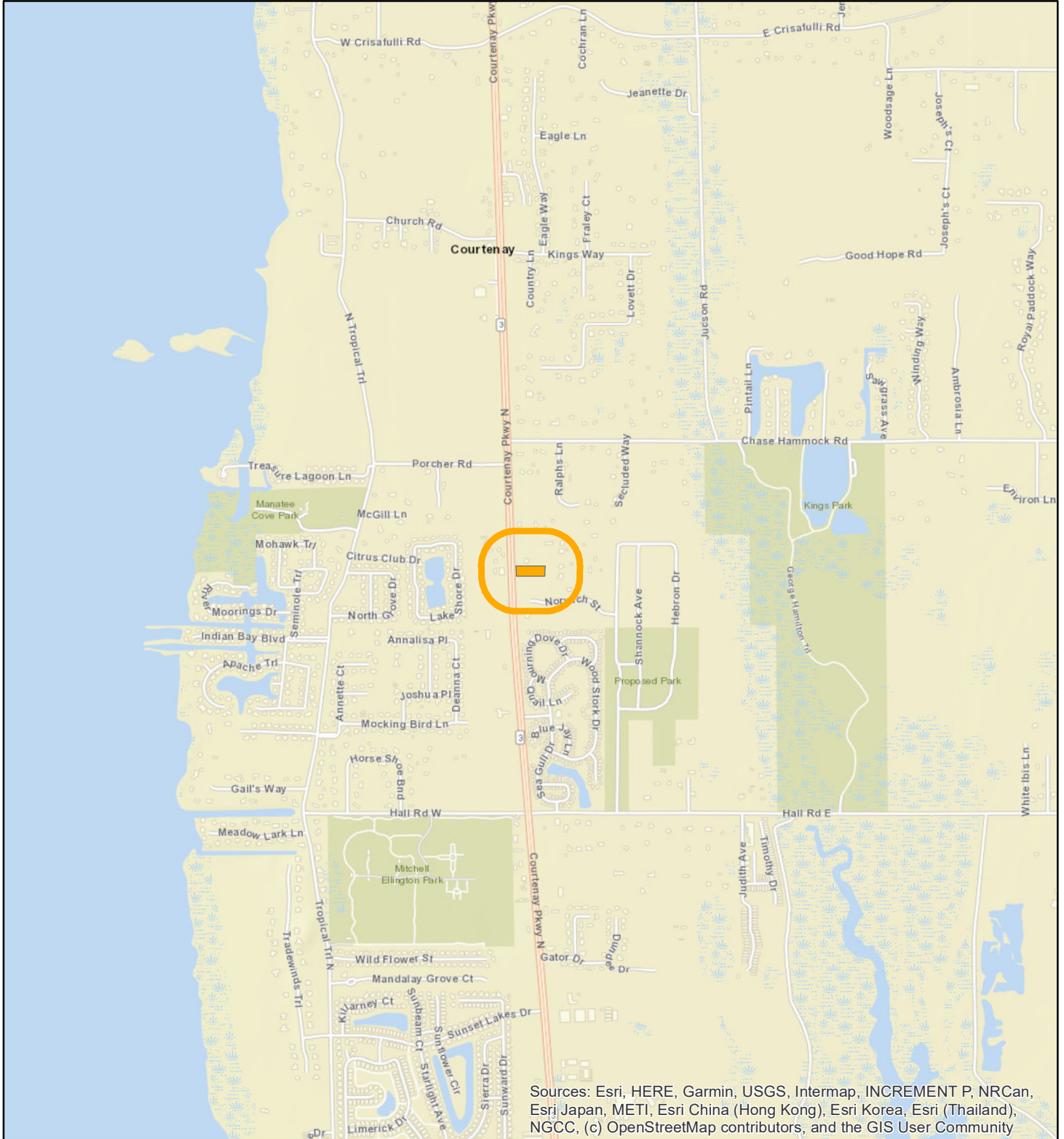


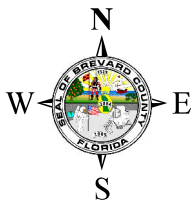
# LOCATION MAP

ERIC D & PAMELA S MARTIN TRUST

25Z00051



Sources: Esri, HERE, Garmin, USGS, Intermap, INCREMENT P, NRCan, Esri Japan, METI, Esri China (Hong Kong), Esri Korea, Esri (Thailand), NGCC, (c) OpenStreetMap contributors, and the GIS User Community





1:24,000 or 1 inch = 2,000 feet

Buffer Distance: 500 feet

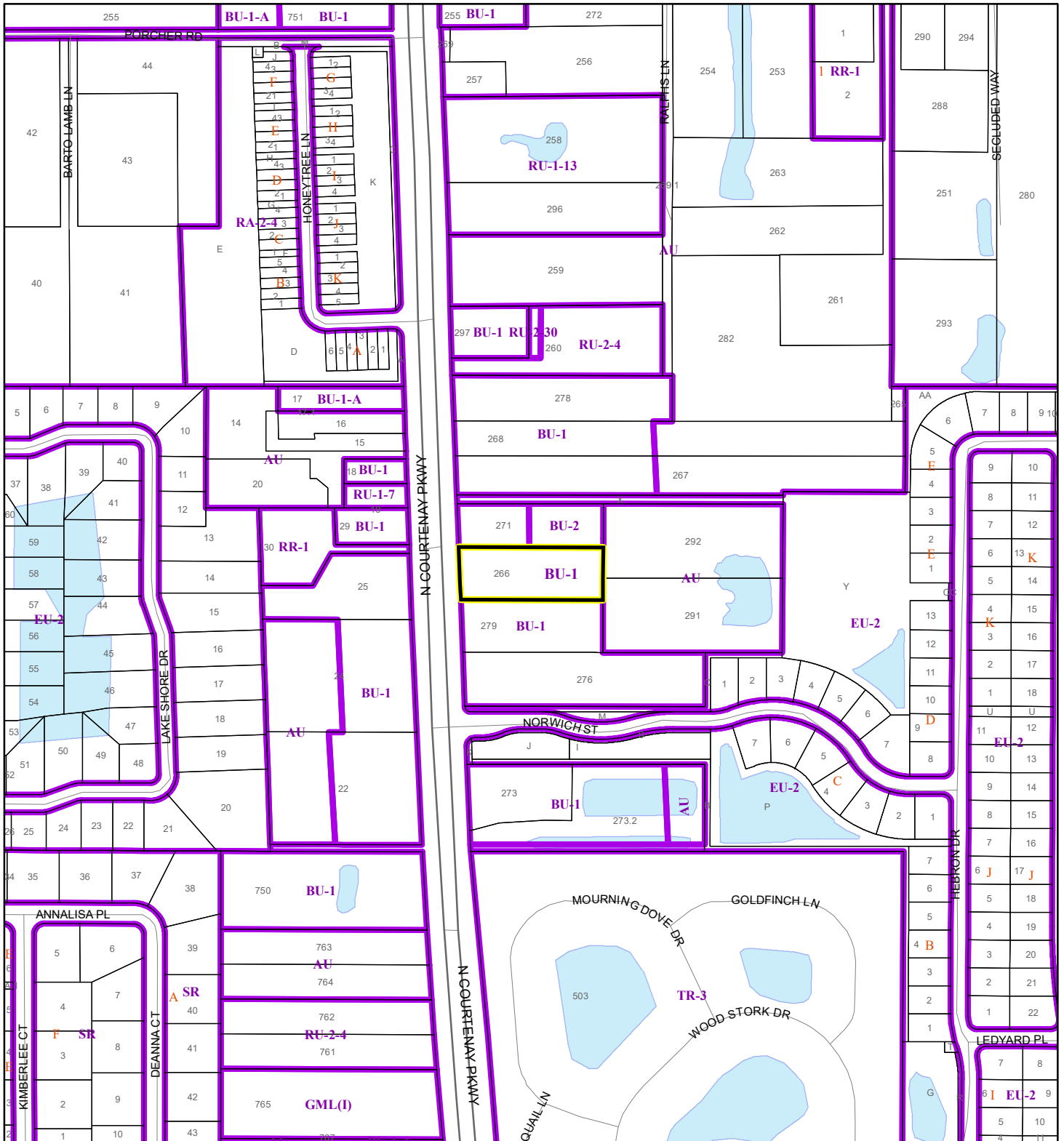
This map was compiled from recorded documents and does not reflect an actual survey. The Brevard County Board of County Commissioners does not assume responsibility for errors or omissions hereon.

Produced by BoCC - GIS Date: 11/3/2025


-  Buffer
-  Subject Property

# ZONING MAP

ERIC D & PAMELA S MARTIN TRUST  
25Z00051



1:4,800 or 1 inch = 400 feet

 Subject Property

 Parcels

 Zoning

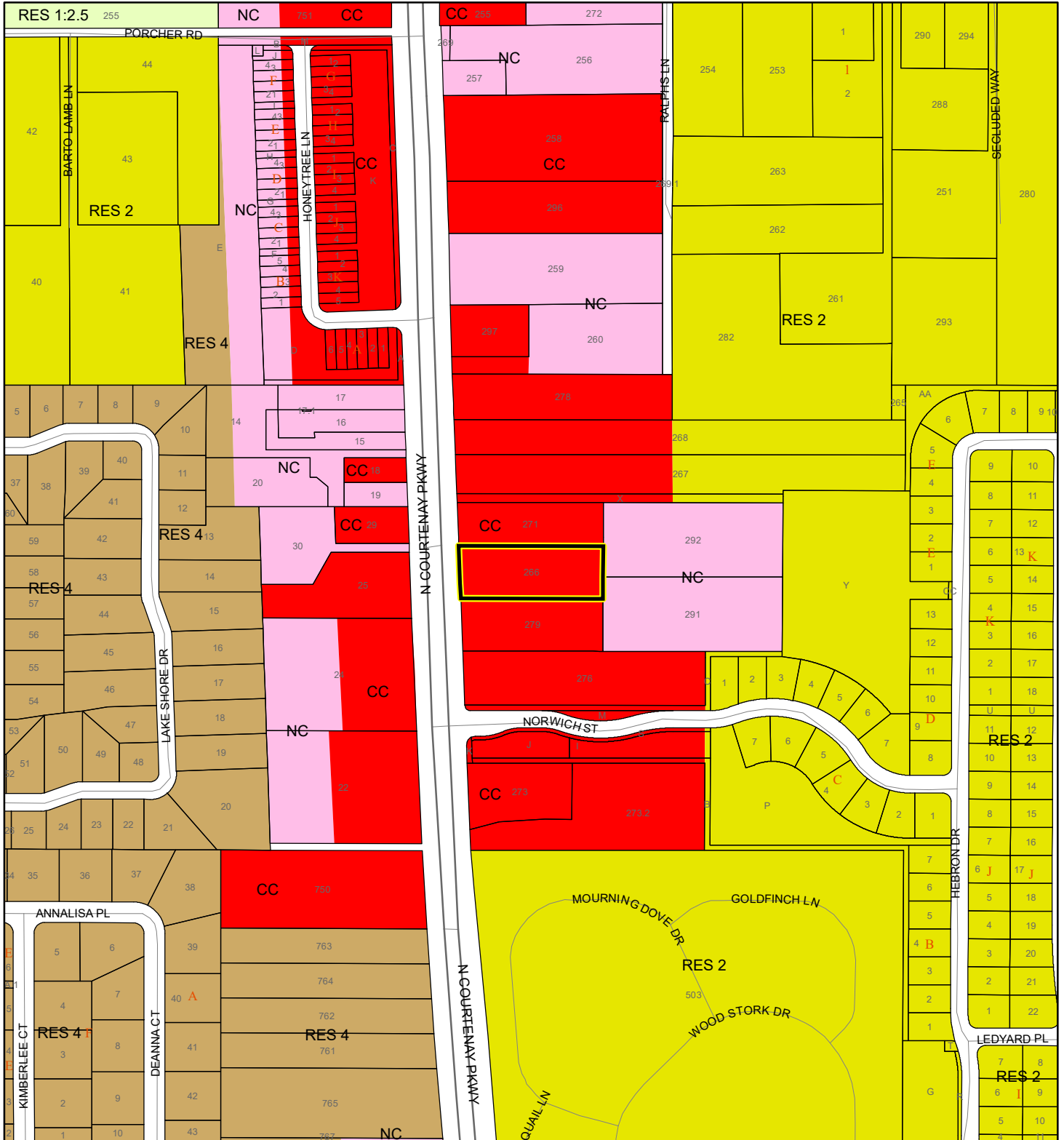
This map was compiled from recorded documents and does not reflect an actual survey. The Brevard County Board of County Commissioners does not assume responsibility for errors or omissions hereon.

Produced by BoCC - GIS Date: 11/3/2025



# FUTURE LAND USE MAP

ERIC D & PAMELA S MARTIN TRUST

25Z00051



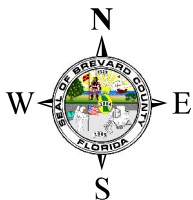
1:4,800 or 1 inch = 400 feet

 Subject Property  
 Parcels

This map was compiled from recorded documents and does not reflect an actual survey. The Brevard County Board of County Commissioners does not assume responsibility for errors or omissions hereon.

Produced by BoCC - GIS Date: 11/3/2025

AERIAL MAP  
ERIC D & PAMELA S MARTIN TRUST  
25Z00051





1:2,400 or 1 inch = 200 feet

PHOTO YEAR: 2025

This map was compiled from recorded documents and does not reflect an actual survey. The Brevard County Board of County Commissioners does not assume responsibility for errors or omissions hereon.

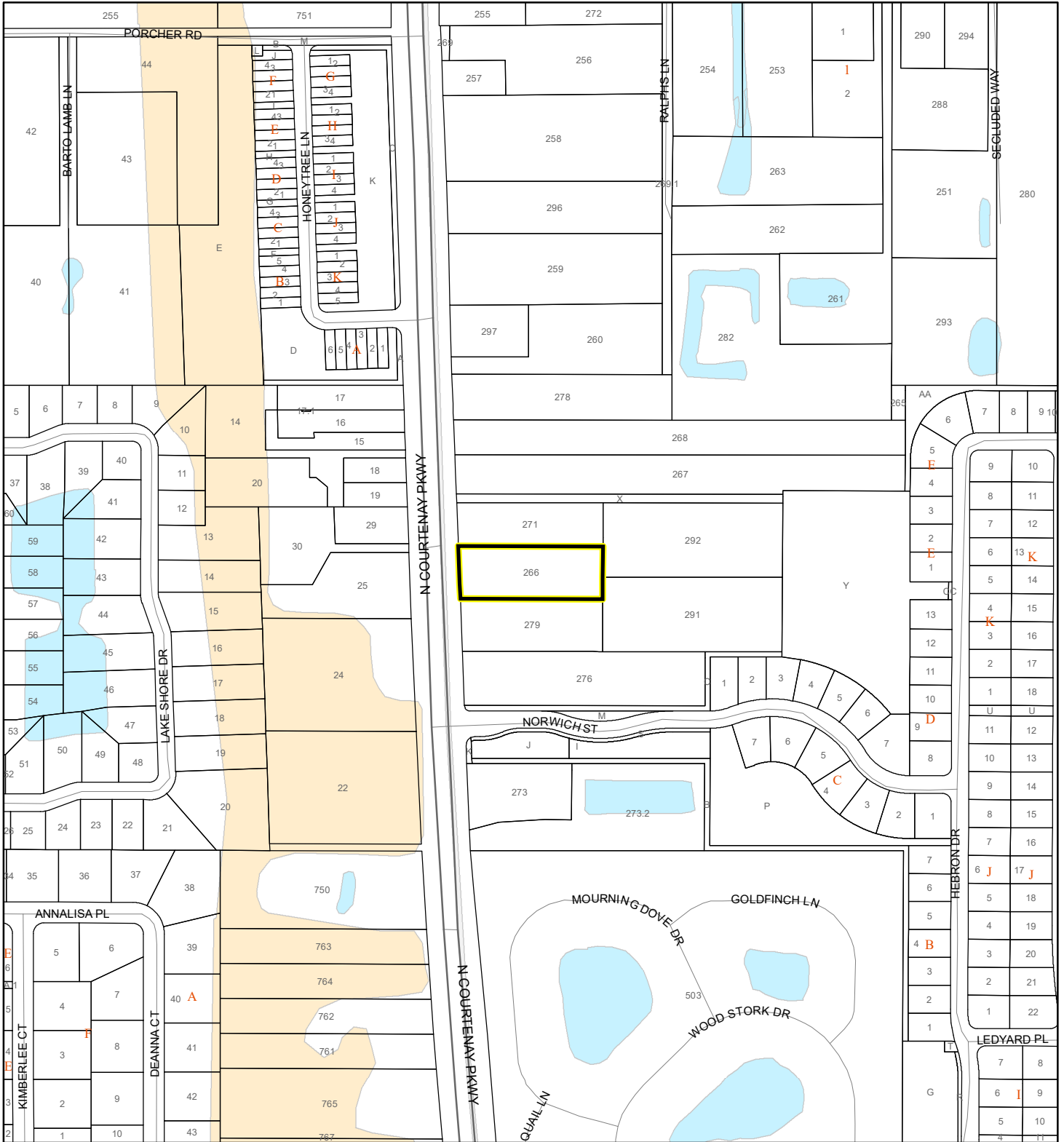
Produced by BoCC - GIS Date: 11/3/2025

-  Subject Property
-  Parcels

# NWI WETLANDS MAP

ERIC D & PAMELA S MARTIN TRUST

25Z00051













1:4,800 or 1 inch = 400 feet

This map was compiled from recorded documents and does not reflect an actual survey. The Brevard County Board of County Commissioners does not assume responsibility for errors or omissions hereon.

Produced by BoCC - GIS Date: 11/3/2025

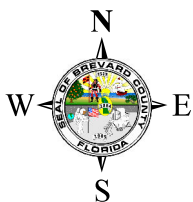
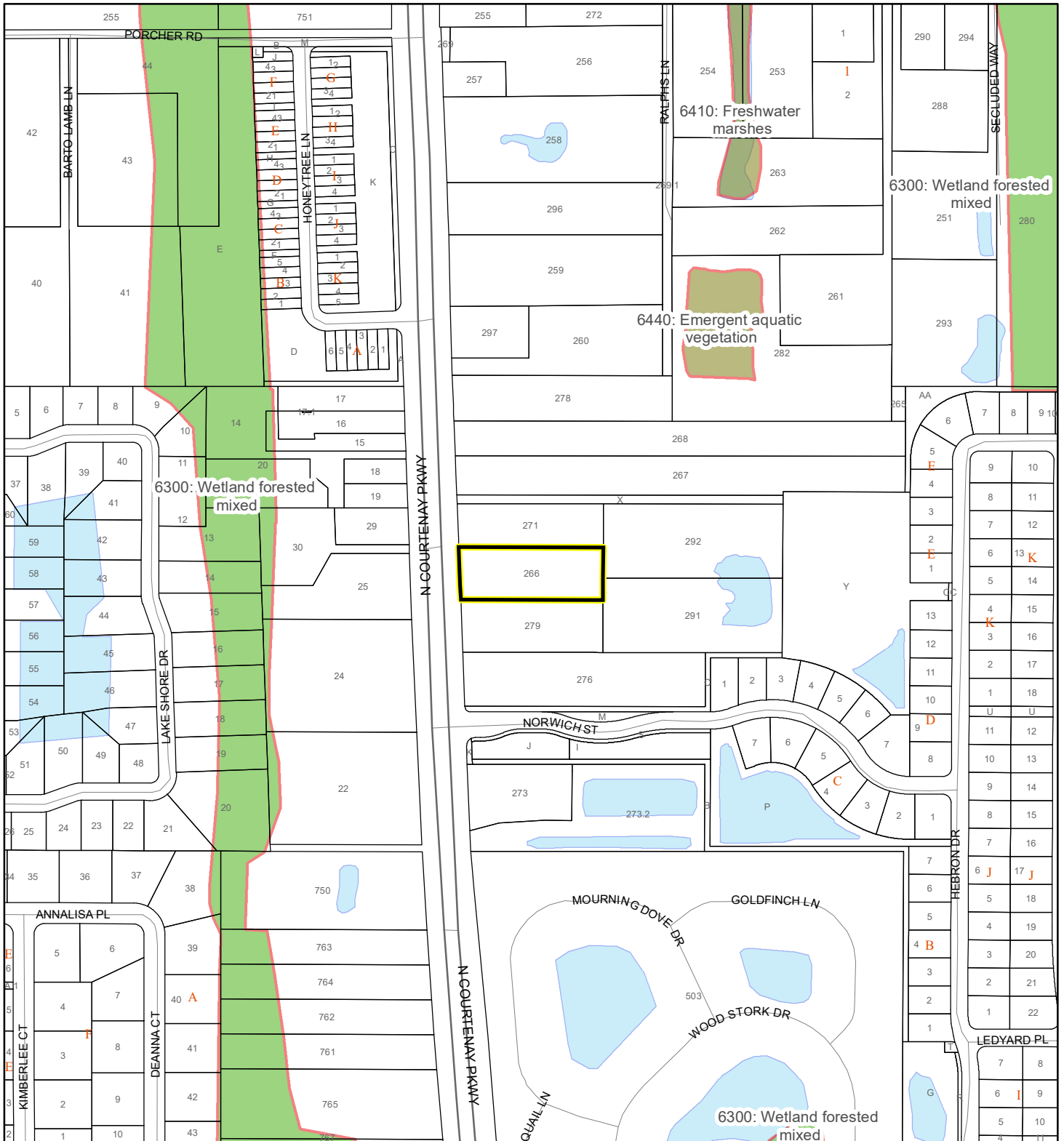
### National Wetlands Inventory (NWI)

- |  |  |
|--|--|
|  Estuarine and Marine Deepwater    |  Freshwater Pond  |
|  Estuarine and Marine Wetland      |  Lake             |
|  Freshwater Emergent Wetland       |  Other            |
|  Freshwater Forested/Shrub Wetland |  Riverine         |
|  |  Subject Property |
|  |  Parcels          |

# SJRWMD FLUCCS WETLANDS - 6000 Series MAP

ERIC D & PAMELA S MARTIN TRUST

25Z00051



1:4,800 or 1 inch = 400 feet

This map was compiled from recorded documents and does not reflect an actual survey. The Brevard County Board of County Commissioners does not assume responsibility for errors or omissions hereon.

Produced by BoCC - GIS Date: 11/3/2025

## SJRWMD FLUCCS WETLANDS

- Wetland Hardwood Forests - Series 6100
- Wetland Coniferous Forest - Series 6200
- Wetland Forested Mixed - Series 6300
- Vegetated Non-Forested Wetlands - Series 6400
- Non-Vegetated Wetland - Series 6500

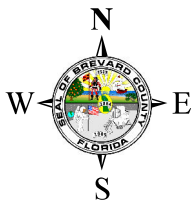
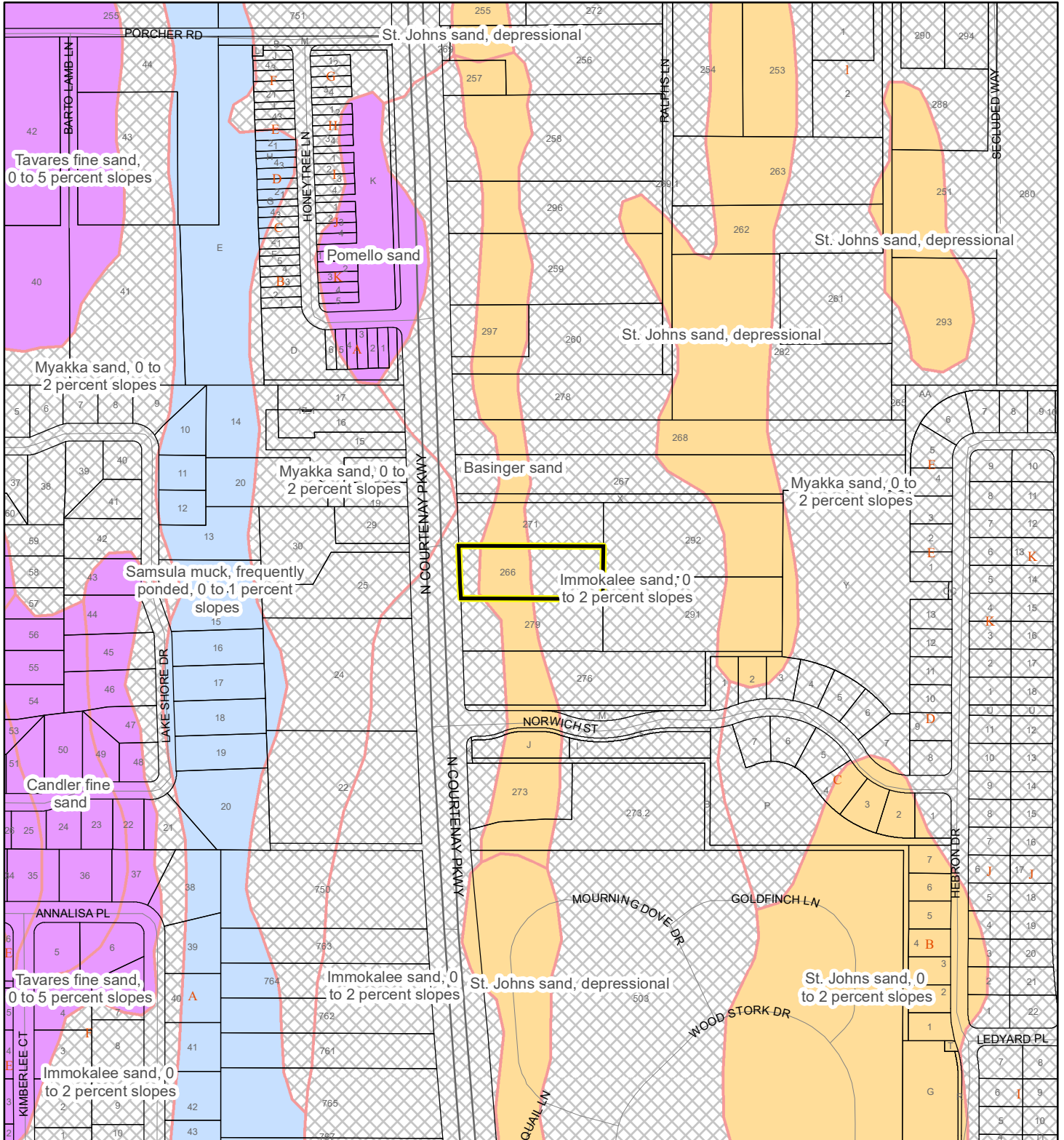
Subject Property

Parcels

# USDA SCSSS SOILS MAP

ERIC D & PAMELA S MARTIN TRUST

25Z00051




1:4,800 or 1 inch = 400 feet

This map was compiled from recorded documents and does not reflect an actual survey. The Brevard County Board of County Commissioners does not assume responsibility for errors or omissions hereon.

Produced by BoCC - GIS Date: 11/3/2025

## USDA SCSSS Soils

 Aquifer and Hydric

 Aquifer

 Hydric

 None

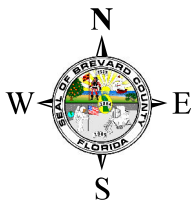
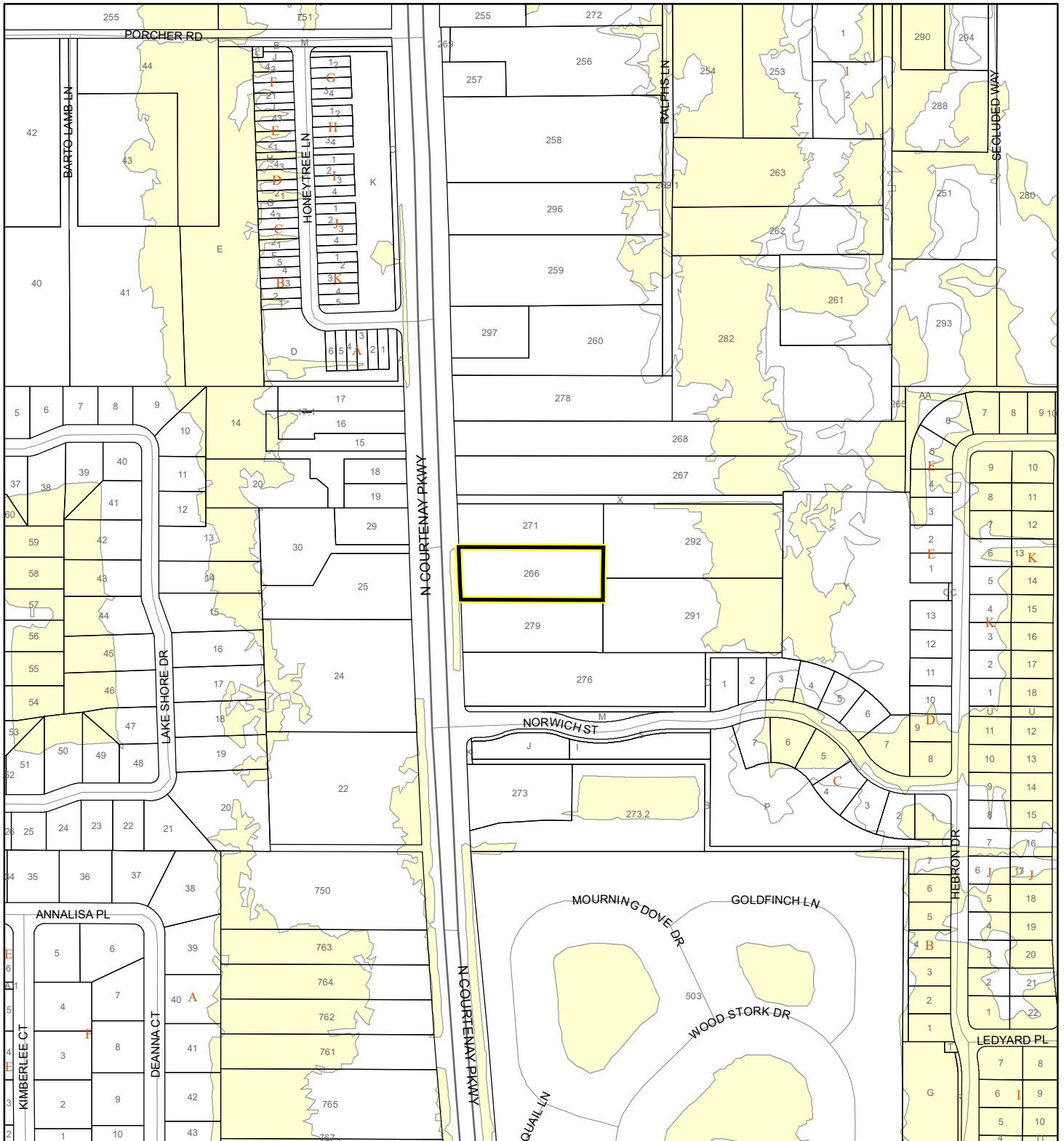
 Subject Property

 Parcels

# FEMA FLOOD ZONES MAP

ERIC D & PAMELA S MARTIN TRUST

25Z00051



1:4,800 or 1 inch = 400 feet

This map was compiled from recorded documents and does not reflect an actual survey. The Brevard County Board of County Commissioners does not assume responsibility for errors or omissions hereon.

Produced by BoCC - GIS Date: 11/3/2025

### FEMA Flood Zones

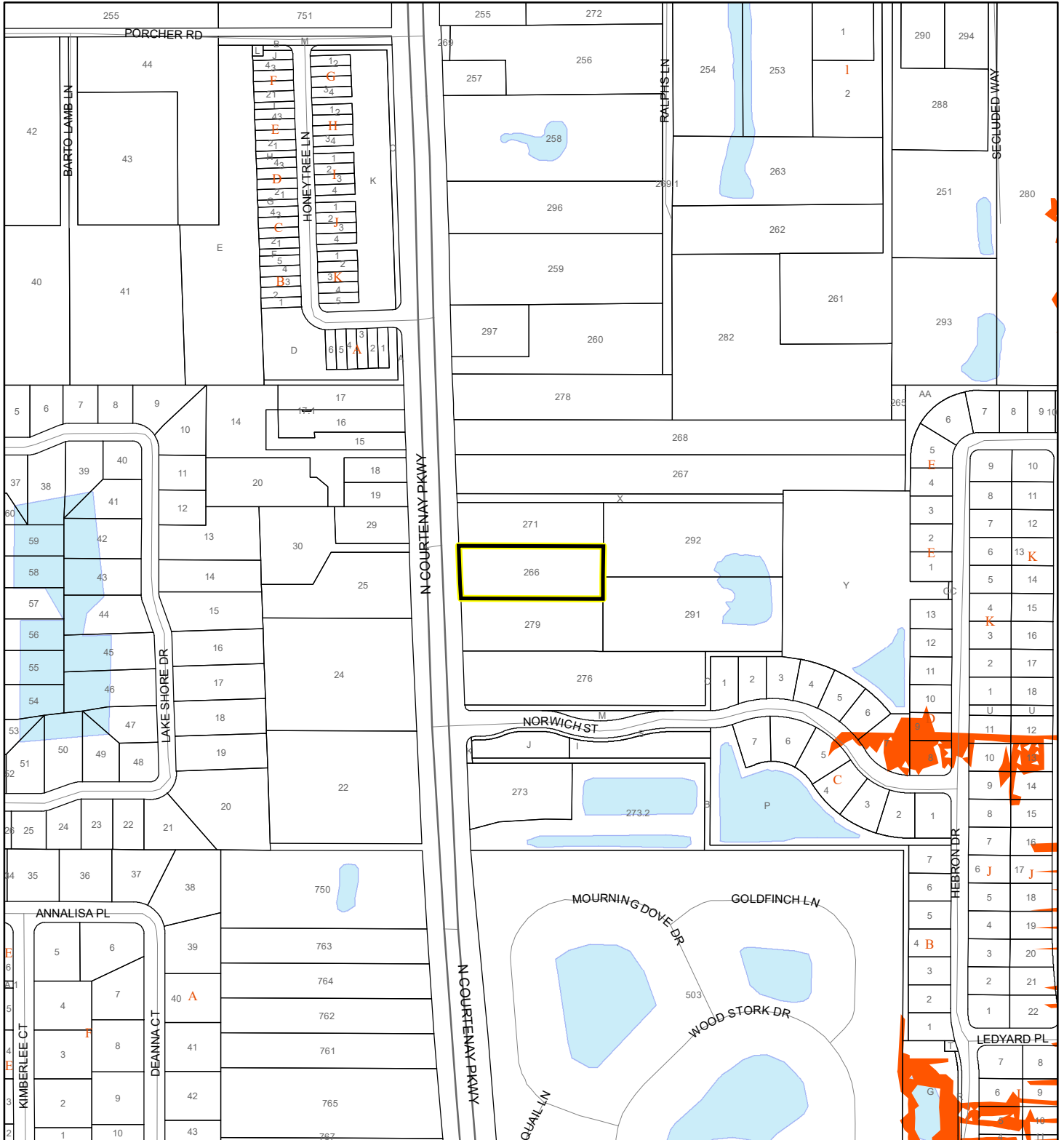
- |  |  |   |
|--|--|---|
|  A                |  AO         |  X |
|  AE               |  Open Water |   |
|  AH               |  VE         |   |
|  Subject Property |  Parcels    |   |



# COASTAL HIGH HAZARD AREA MAP

ERIC D & PAMELA S MARTIN TRUST

25Z00051



1:4,800 or 1 inch = 400 feet


This map was compiled from recorded documents and does not reflect an actual survey. The Brevard County Board of County Commissioners does not assume responsibility for errors or omissions hereon.

Produced by BoCC - GIS Date: 11/3/2025

 Subject Property

 Parcels

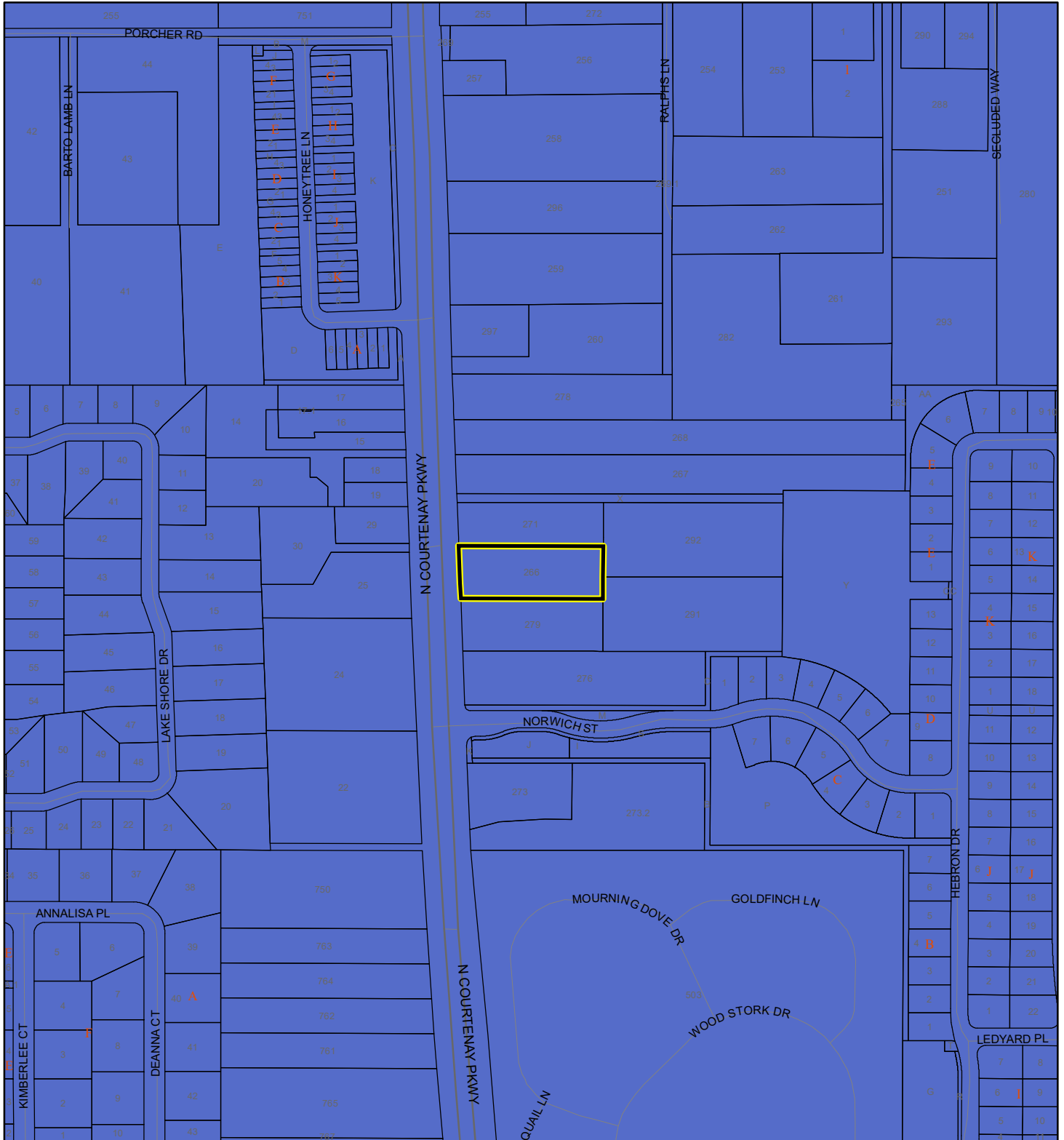
**Coastal High Hazard Area**

 SurgeZoneCat1

# INDIAN RIVER LAGOON SEPTIC OVERLAY MAP

ERIC D & PAMELA S MARTIN TRUST

25Z00051



1:4,800 or 1 inch = 400 feet

This map was compiled from recorded documents and does not reflect an actual survey. The Brevard County Board of County Commissioners does not assume responsibility for errors or omissions hereon.

Produced by BoCC - GIS Date: 11/3/2025


 Subject Property

 Parcels

**Septic Overlay**

 40 Meters

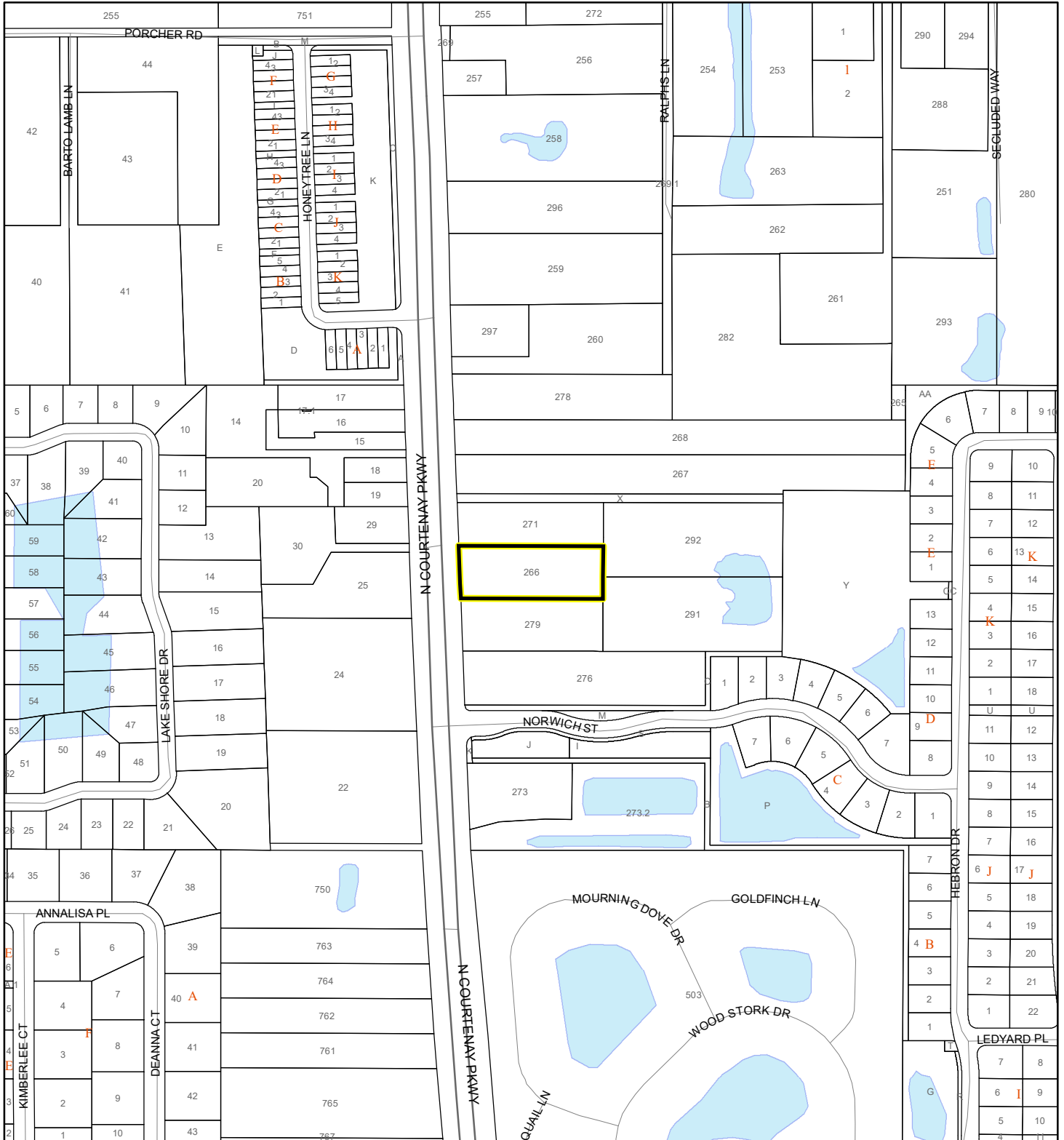
 60 Meters

 All Distances

# EAGLE NESTS MAP

ERIC D & PAMELA S MARTIN TRUST

25Z00051



1:4,800 or 1 inch = 400 feet

 Subject Property

 Parcels

 Eagle Nests  
FWS

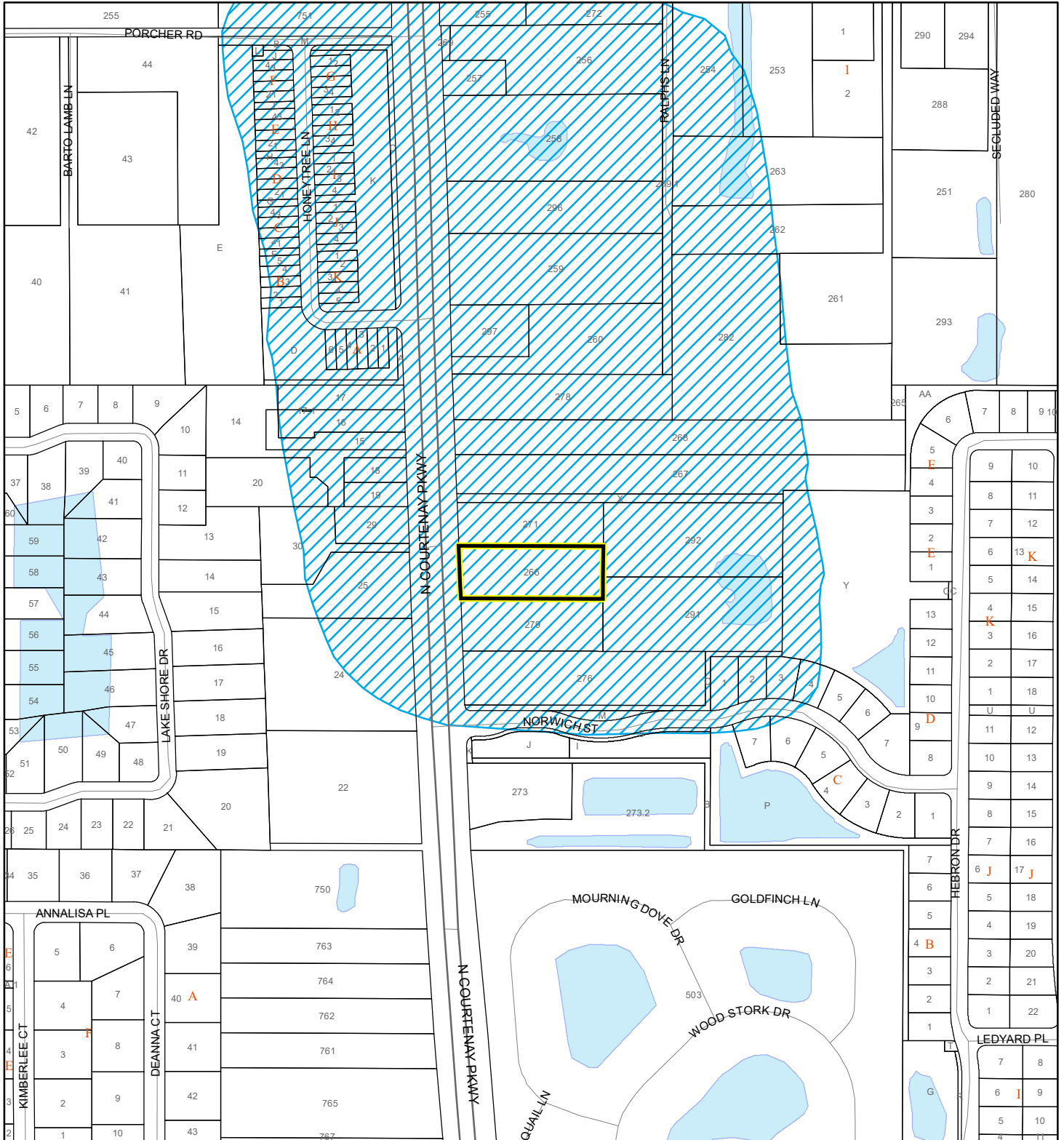
This map was compiled from recorded documents and does not reflect an actual survey. The Brevard County Board of County Commissioners does not assume responsibility for errors or omissions hereon.

Produced by BoCC - GIS Date: 11/3/2025

# SCRUB JAY OCCUPANCY MAP

ERIC D & PAMELA S MARTIN TRUST




25Z00051



1:4,800 or 1 inch = 400 feet

This map was compiled from recorded documents and does not reflect an actual survey. The Brevard County Board of County Commissioners does not assume responsibility for errors or omissions hereon.

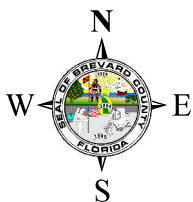
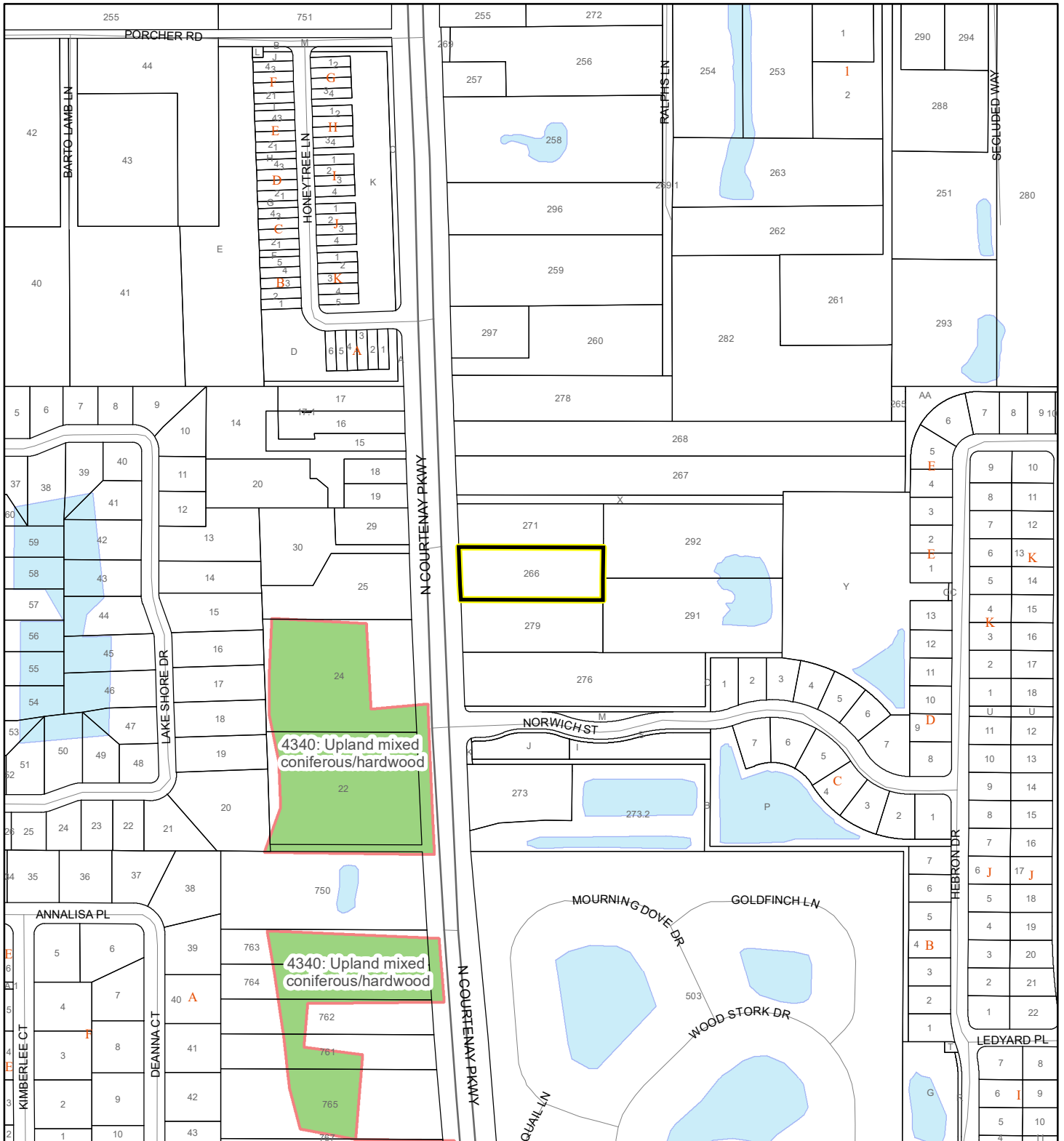
Produced by BoCC - GIS Date: 11/3/2025

-  Subject Property
-  Parcels
-  Scrub Jay Occupancy

# SJRWMD FLUCCS UPLAND FORESTS - 4000 Series MAP

ERIC D & PAMELA S MARTIN TRUST

25Z00051



1:4,800 or 1 inch = 400 feet

This map was compiled from recorded documents and does not reflect an actual survey. The Brevard County Board of County Commissioners does not assume responsibility for errors or omissions hereon.

Produced by BoCC - GIS Date: 11/3/2025

## SJRWMD FLUCCS Upland Forests

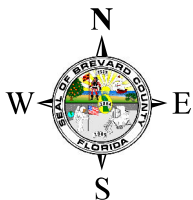
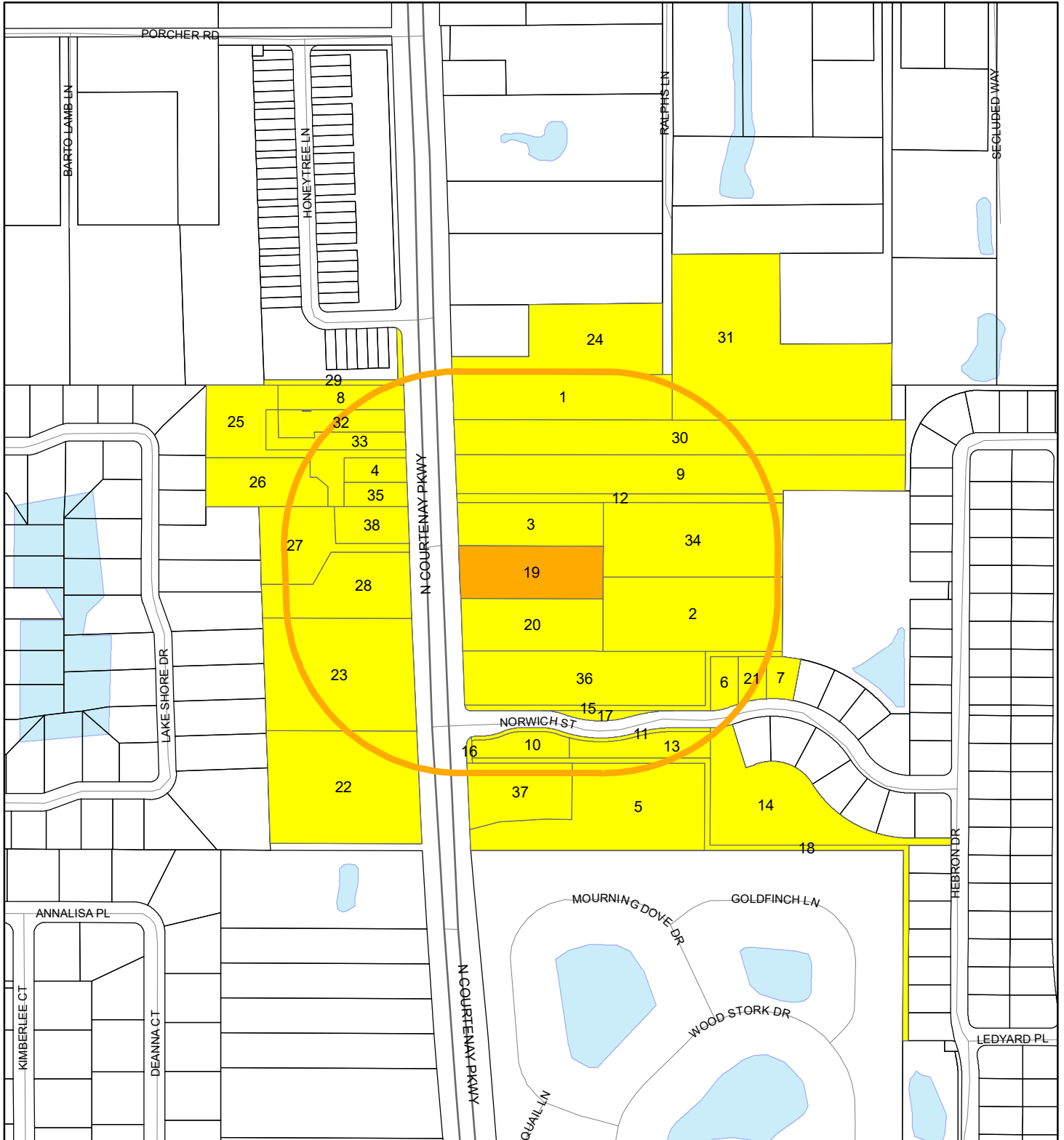
- Upland Coniferous Forest - 4100 Series
- Upland Hardwood Forest - 4200 Series
- Upland Mixed Forest - 4300 Series
- Tree Plantations - 4400 Series

Subject Property

Parcels

# RADIUS MAP

ERIC D & PAMELA S MARTIN TRUST  
25Z00051




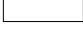


1:4,800 or 1 inch = 400 feet

Buffer Distance: 500 feet

This map was compiled from recorded documents and does not reflect an actual survey. The Brevard County Board of County Commissioners does not assume responsibility for errors or omissions hereon.

Produced by BoCC - GIS Date: 11/3/2025

-  Buffer
-  Subject Property
-  Notify Property
-  Parcels

TOWNSHIP 23, RANGE 36, SECTION 35

25Z00051

Brevard County Official Planning & Development Map

**Legend**

- Subject Property
- TwnRng\_Lines
- Sections
- Parcels
- Streets
- Zoning Easements
- Zoning Actions
- Municipality



**DISCLAIMER AND TERMS OF USE:**

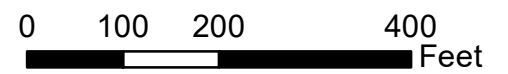
The official version of the Brevard County Zoning Map and Future Land Use Map can be viewed during regular business hours at the Brevard County Planning and Development Department, 321-633-2070, 2725 Judge Fran Jamieson Way, Bldg A-114, Viera, FL 32940.

Data is provided "as-is" without any warranty or representation that the data is accurate, timely or complete. The County makes no warranty, express or implied, that the data, graphics and maps presented are up-to-date or that the information shown is reliable for the viewer's intended purposes or uses. The viewer acknowledges and accepts the above limitations on the data portrayed and acknowledges that the data shown is dynamic and is in a constant state of maintenance, correction and update.

Though this map purports to depict properties within the unincorporated area of Brevard County, Florida, the County does not warrant or represent that the map has been updated to show properties that may have been annexed or included within the boundaries of one or more municipalities.

This map is for display and informational purposes only. The viewer must consult the official Zoning Map or Future Land Use Map on file in the Brevard County Planning and Zoning Office for official and precise Zoning or Future Land Use configurations.

**MAPS MAY NOT BE RESOLD:** Data, maps or digital files are prepared by employees of Brevard County and may not be resold without prior consent from the Brevard County Board of



1 Inch = 200 Feet

Produced by Information Technology Department - GIS Date: 11/3/2025

