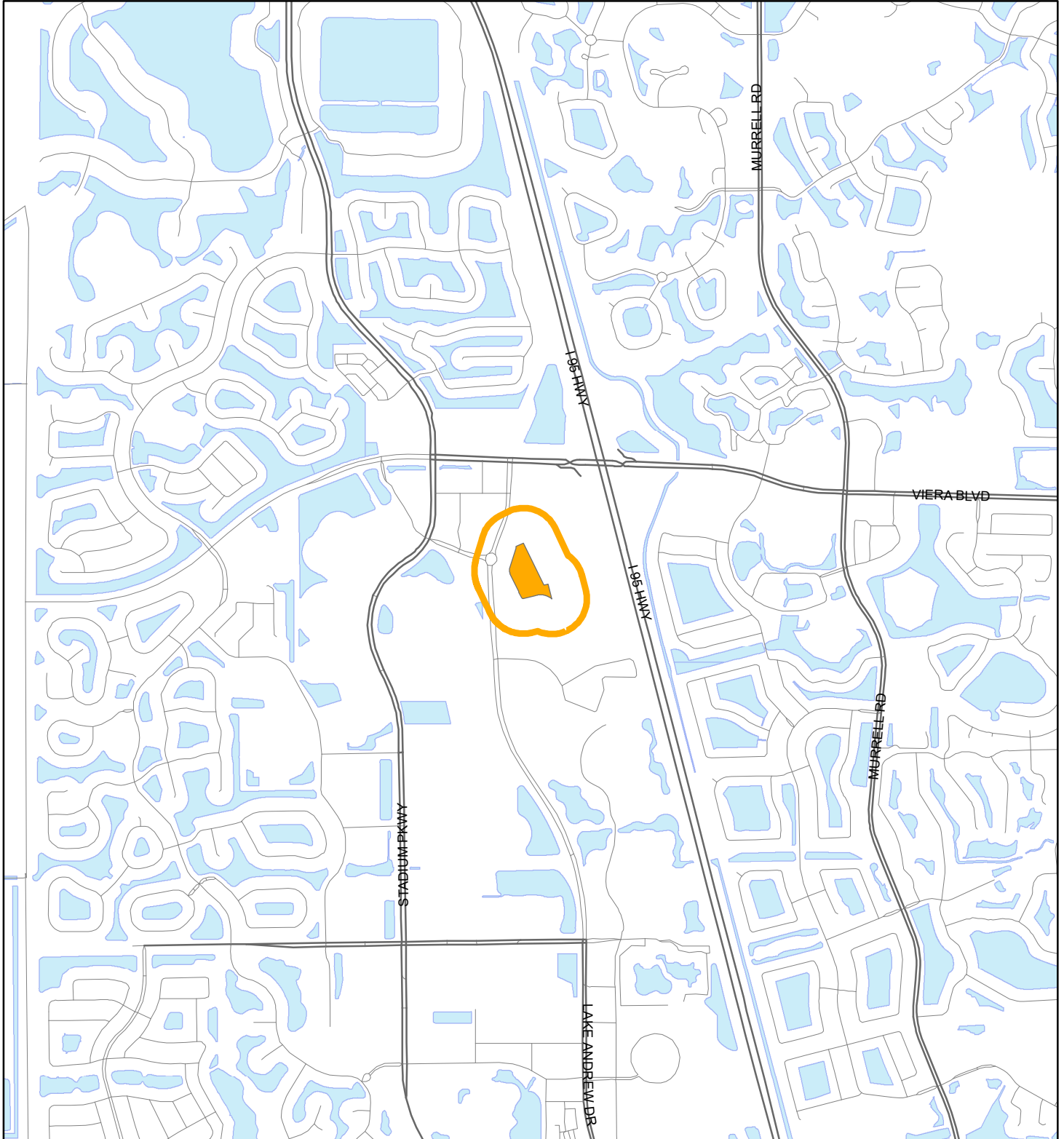


# LOCATION MAP

BORROWS WEST HOTEL DEVELOPERS LLC

24Z00030





1:24,000 or 1 inch = 2,000 feet

Buffer Distance: 500 feet

This map was compiled from recorded documents and does not reflect an actual survey. The Brevard County Board of County Commissioners does not assume responsibility for errors or omissions hereon.

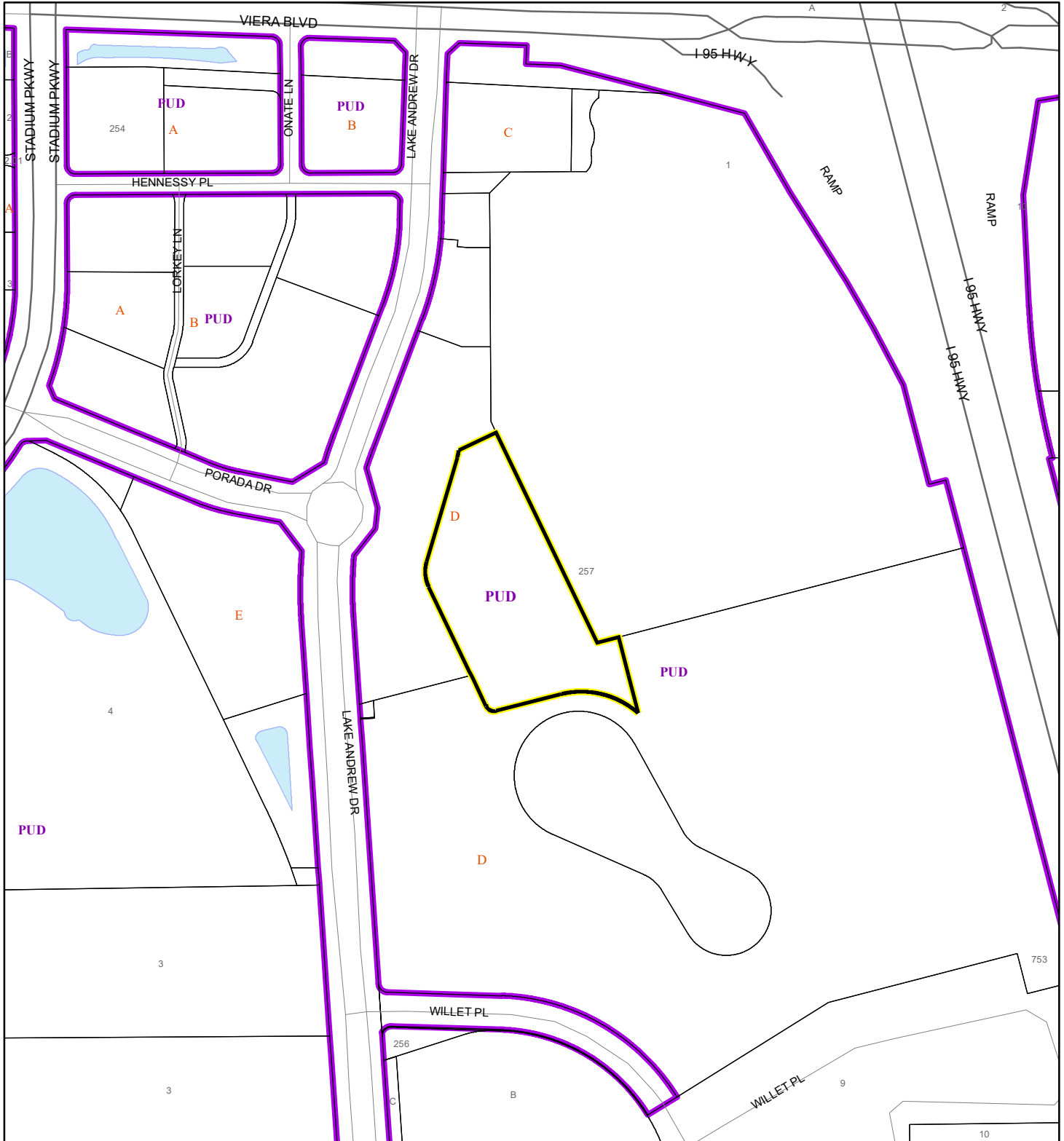
Produced by BoCC - GIS Date: 6/17/2024

-  Buffer
-  Subject Property

# ZONING MAP

BORROWS WEST HOTEL DEVELOPERS LLC

24Z00030



1:4,800 or 1 inch = 400 feet

This map was compiled from recorded documents and does not reflect an actual survey. The Brevard County Board of County Commissioners does not assume responsibility for errors or omissions hereon.

Produced by BoCC - GIS Date: 6/17/2024

       Subject Property

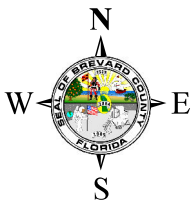
Parcels

Zoning



# FUTURE LAND USE MAP

BORROWS WEST HOTEL DEVELOPERS LLC

24Z00030



1:4,800 or 1 inch = 400 feet

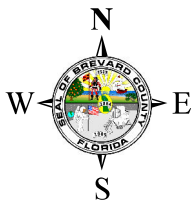
 Subject Property  
 Parcels

This map was compiled from recorded documents and does not reflect an actual survey. The Brevard County Board of County Commissioners does not assume responsibility for errors or omissions hereon.

Produced by BoCC - GIS Date: 6/17/2024



AERIAL MAP  
BORROWS WEST HOTEL DEVELOPERS LLC  
24Z00030





1:4,800 or 1 inch = 400 feet

PHOTO YEAR: 2023

This map was compiled from recorded documents and does not reflect an actual survey. The Brevard County Board of County Commissioners does not assume responsibility for errors or omissions hereon.

Produced by BoCC - GIS Date: 6/17/2024

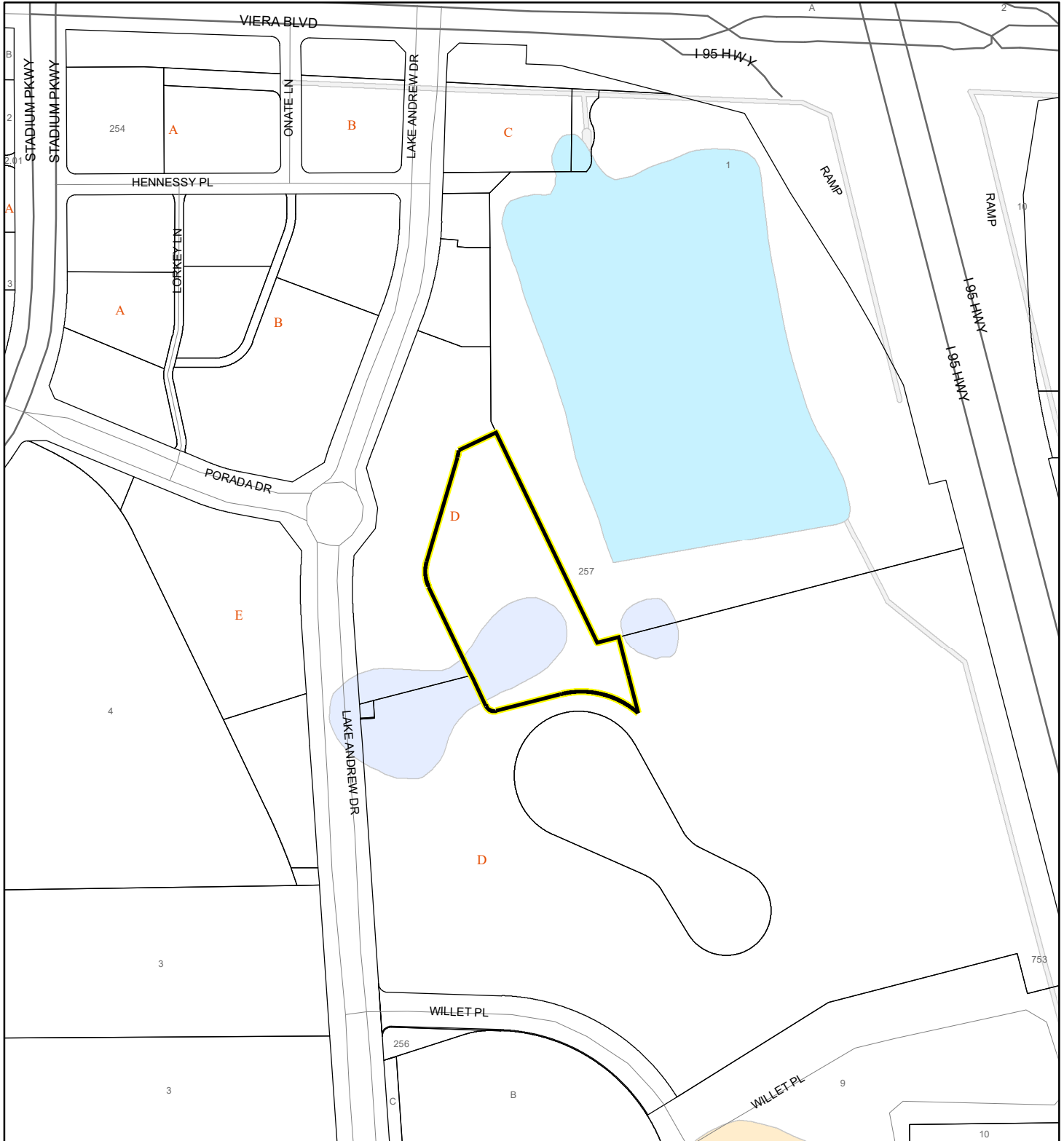
 Subject Property  
 Parcels



# NWI WETLANDS MAP

BORROWS WEST HOTEL DEVELOPERS LLC

24Z00030






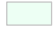

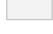

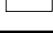


1:4,800 or 1 inch = 400 feet

This map was compiled from recorded documents and does not reflect an actual survey. The Brevard County Board of County Commissioners does not assume responsibility for errors or omissions hereon.

Produced by BoCC - GIS Date: 6/17/2024

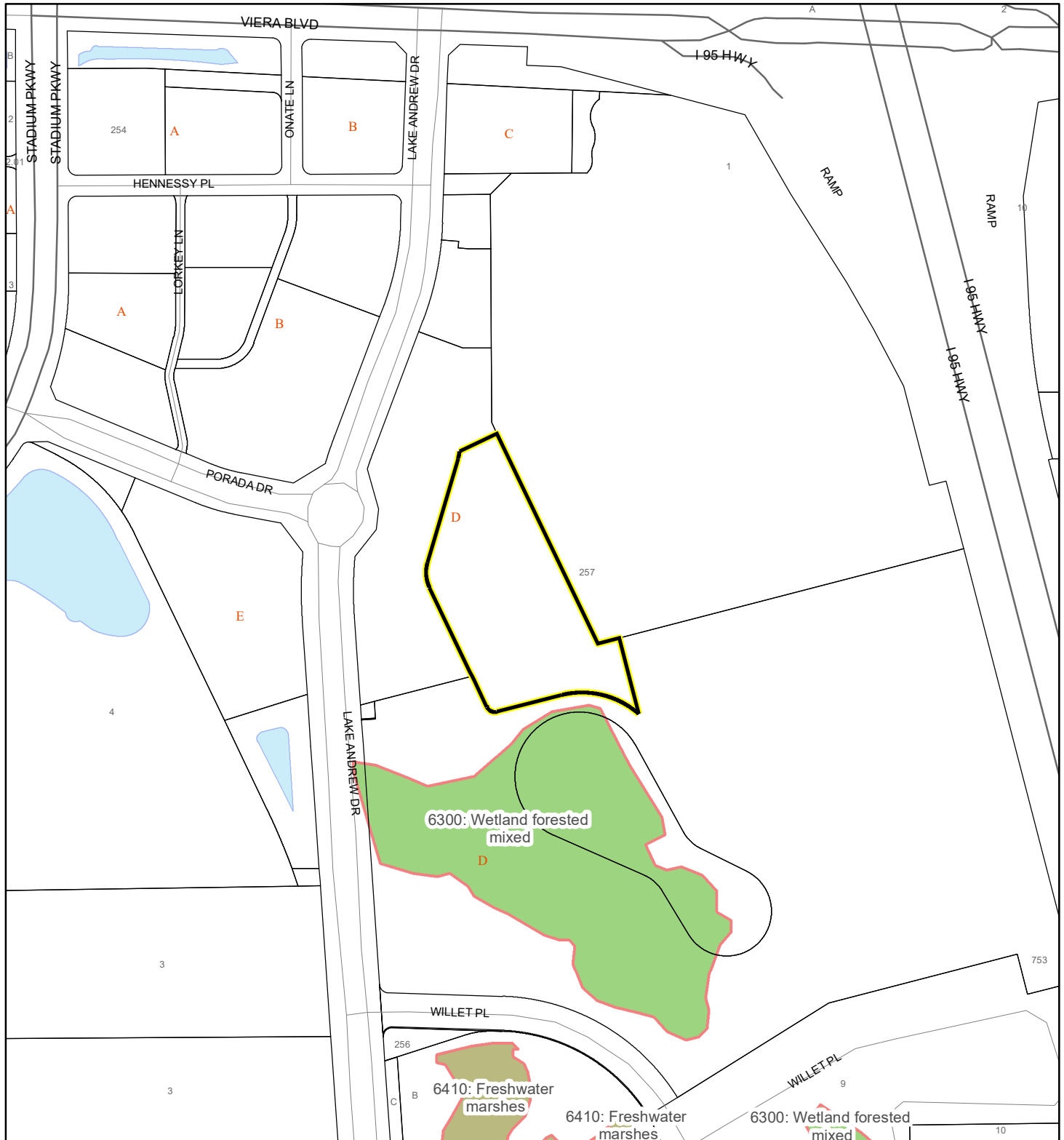
## National Wetlands Inventory (NWI)

	Estuarine and Marine Deepwater		Freshwater Pond
	Estuarine and Marine Wetland		Lake
	Freshwater Emergent Wetland		Other
	Freshwater Forested/Shrub Wetland		Riverine
	Subject Property		Parcels

# SJRWMD FLUCCS WETLANDS - 6000 Series MAP

BORROWS WEST HOTEL DEVELOPERS LLC

24Z00030



1:4,800 or 1 inch = 400 feet

This map was compiled from recorded documents and does not reflect an actual survey. The Brevard County Board of County Commissioners does not assume responsibility for errors or omissions hereon.

Produced by BoCC - GIS Date: 6/17/2024

## SJRWMD FLUCCS WETLANDS

- Wetland Hardwood Forests - Series 6100
- Wetland Coniferous Forest - Series 6200
- Wetland Forested Mixed - Series 6300
- Vegetated Non-Forested Wetlands - Series 6400
- Non-Vegetated Wetland - Series 6500

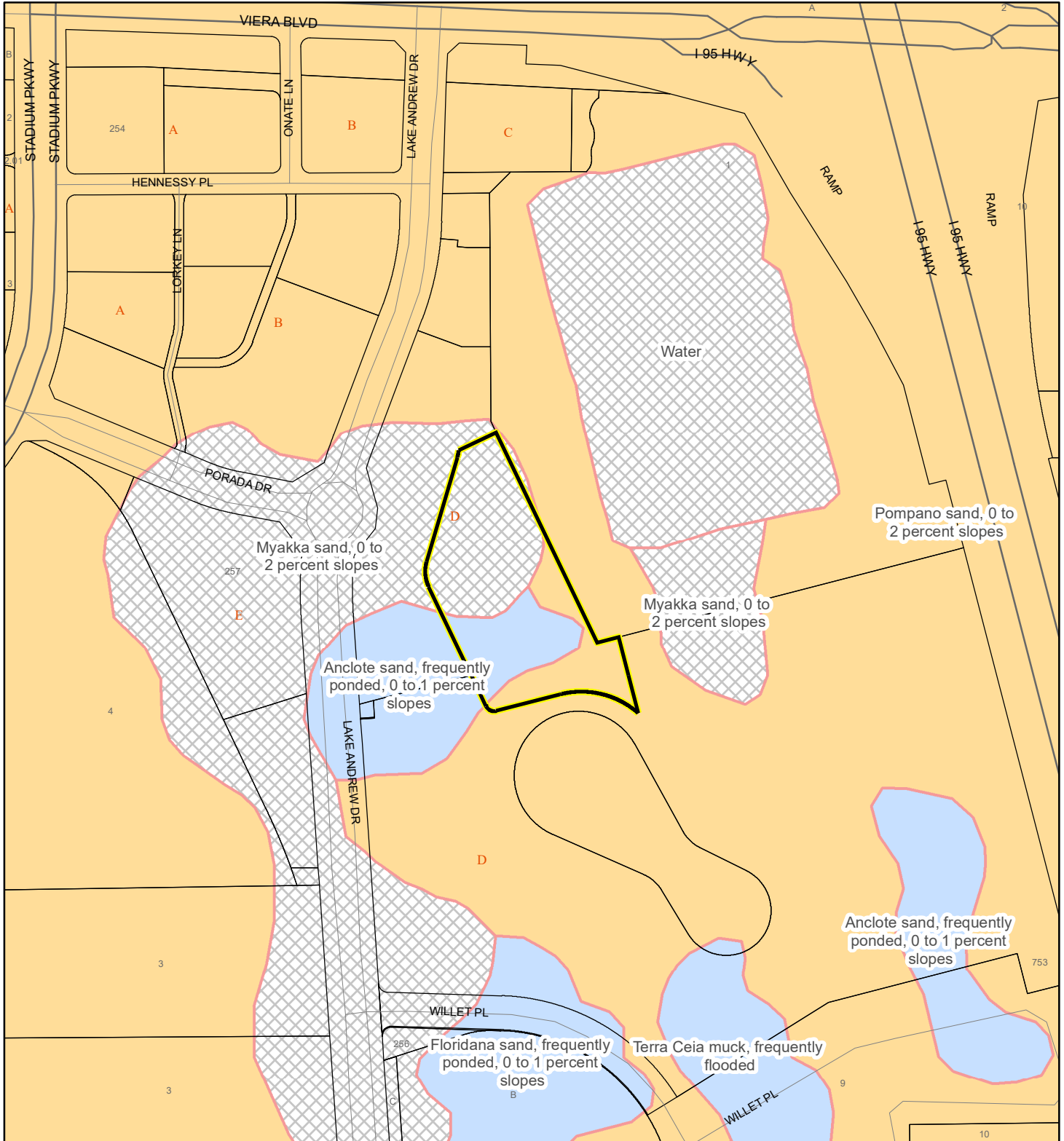
Subject Property

Parcels

# USDA SCSSS SOILS MAP

BORROWS WEST HOTEL DEVELOPERS LLC

24Z00030



1:4,800 or 1 inch = 400 feet

This map was compiled from recorded documents and does not reflect an actual survey. The Brevard County Board of County Commissioners does not assume responsibility for errors or omissions hereon.

Produced by BoCC - GIS Date: 6/17/2024

## USDA SCSSS Soils

- Aquifer and Hydric
- Aquifer
- Hydric
- None

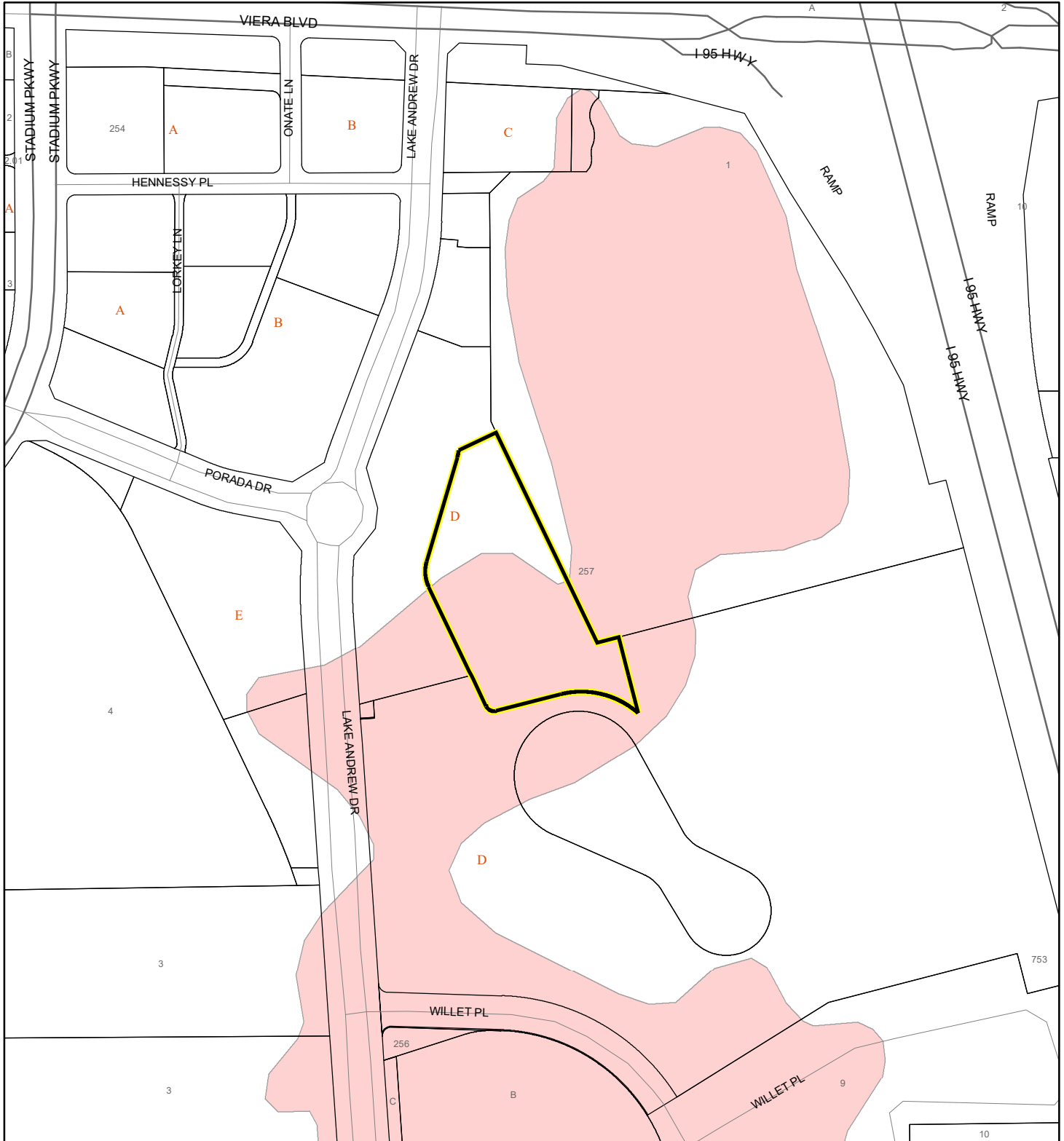
Subject Property

Parcels

# FEMA FLOOD ZONES MAP

BORROWS WEST HOTEL DEVELOPERS LLC

24Z00030



1:4,800 or 1 inch = 400 feet

This map was compiled from recorded documents and does not reflect an actual survey. The Brevard County Board of County Commissioners does not assume responsibility for errors or omissions hereon.

Produced by BoCC - GIS Date: 6/17/2024

## FEMA Flood Zones

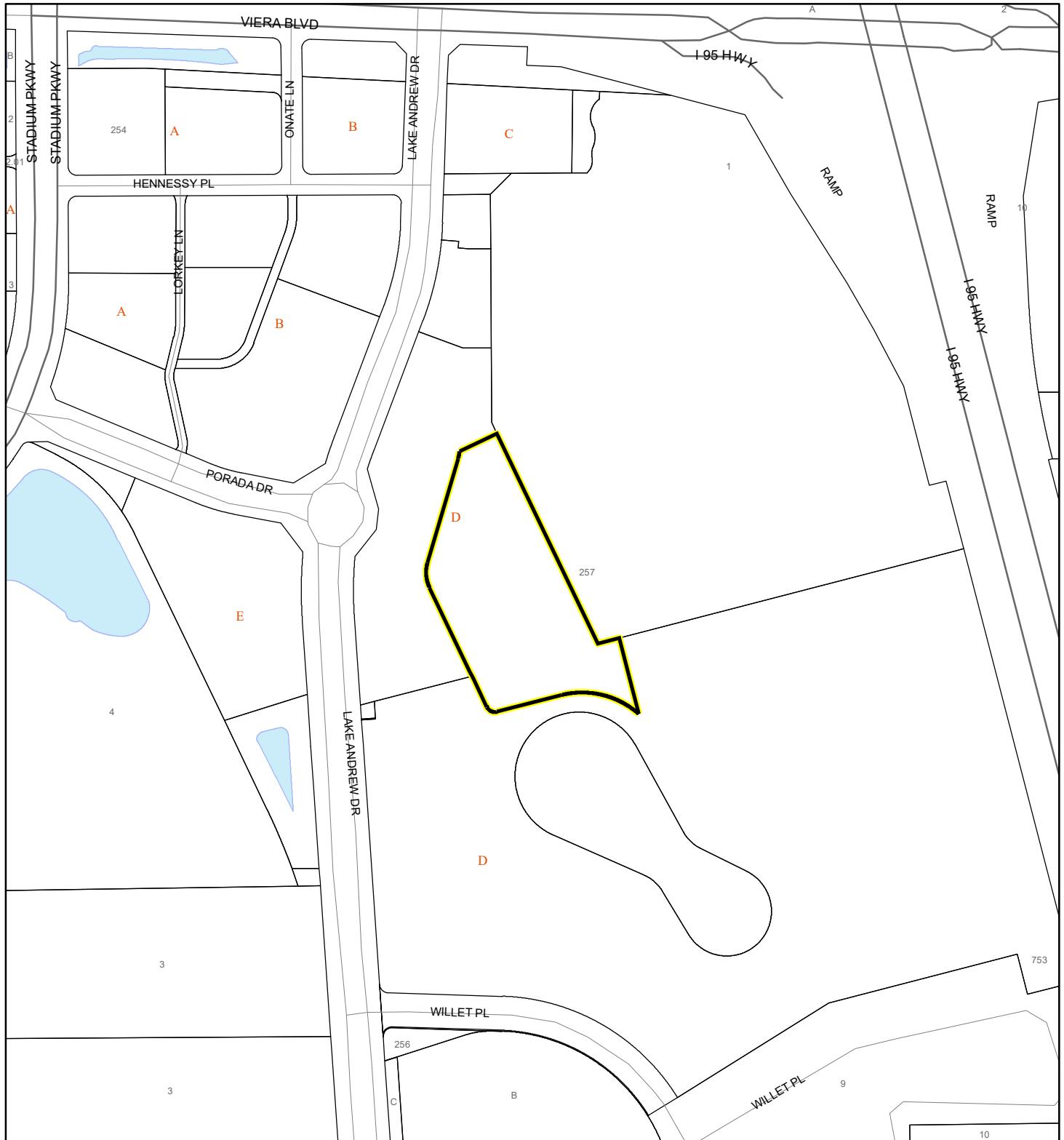
A	AO	X
AE	Open Water	
AH	VE	
Subject Property	Parcels	



# COASTAL HIGH HAZARD AREA MAP

BORROWS WEST HOTEL DEVELOPERS LLC

24Z00030



1:4,800 or 1 inch = 400 feet


This map was compiled from recorded documents and does not reflect an actual survey. The Brevard County Board of County Commissioners does not assume responsibility for errors or omissions hereon.

Produced by BoCC - GIS Date: 6/17/2024

 Subject Property

 Parcels

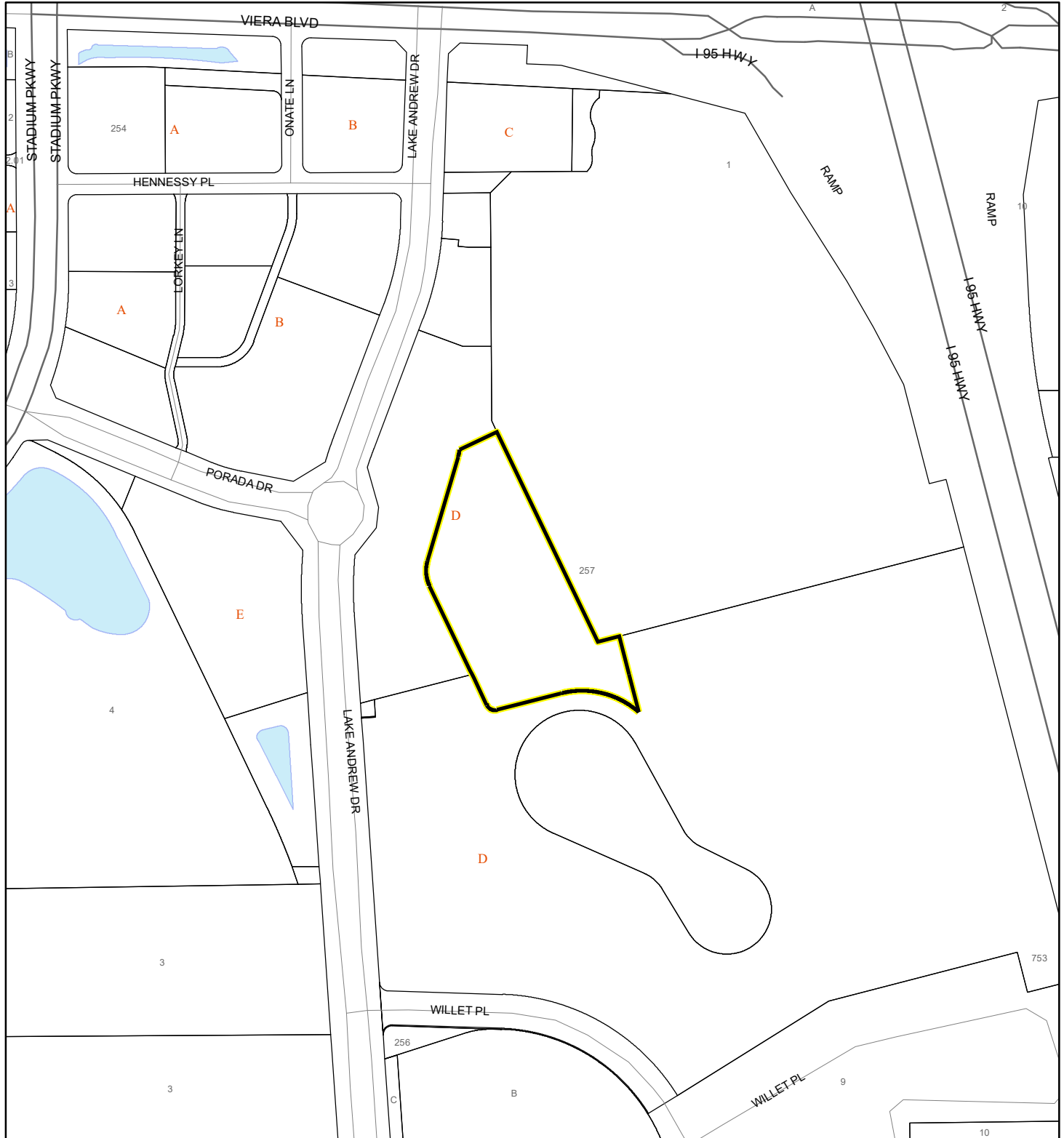
**Coastal High Hazard Area**

 SurgeZoneCat1

# INDIAN RIVER LAGOON SEPTIC OVERLAY MAP

BORROWS WEST HOTEL DEVELOPERS LLC

24Z00030



1:4,800 or 1 inch = 400 feet

This map was compiled from recorded documents and does not reflect an actual survey. The Brevard County Board of County Commissioners does not assume responsibility for errors or omissions hereon.

Produced by BoCC - GIS Date: 6/17/2024

Subject Property

Parcels

**Septic Overlay**

40 Meters

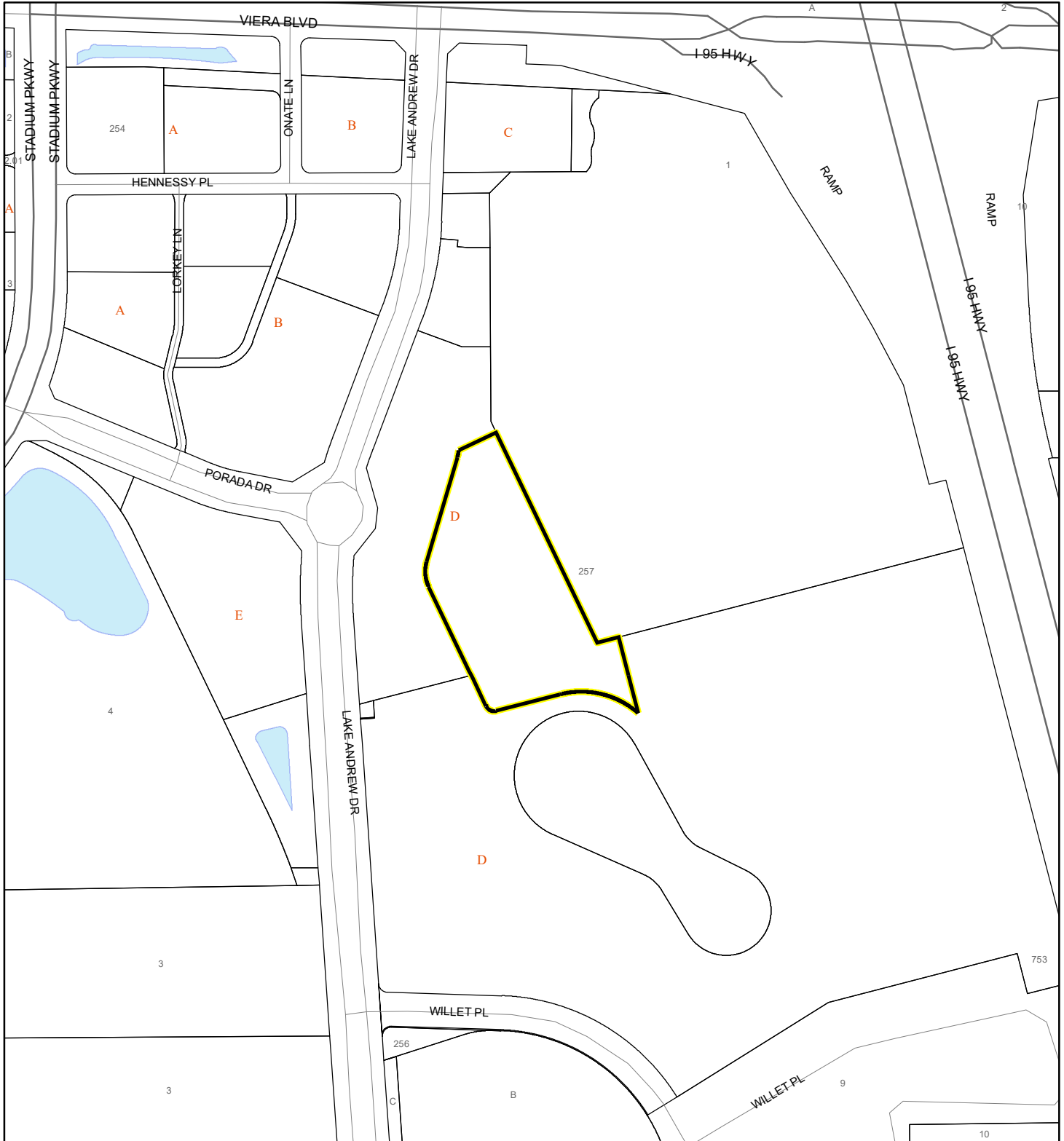
60 Meters

All Distances

# EAGLE NESTS MAP

BORROWS WEST HOTEL DEVELOPERS LLC

24Z00030



1:4,800 or 1 inch = 400 feet

This map was compiled from recorded documents and does not reflect an actual survey. The Brevard County Board of County Commissioners does not assume responsibility for errors or omissions hereon.

Produced by BoCC - GIS Date: 6/17/2024

 Subject Property

 Parcels

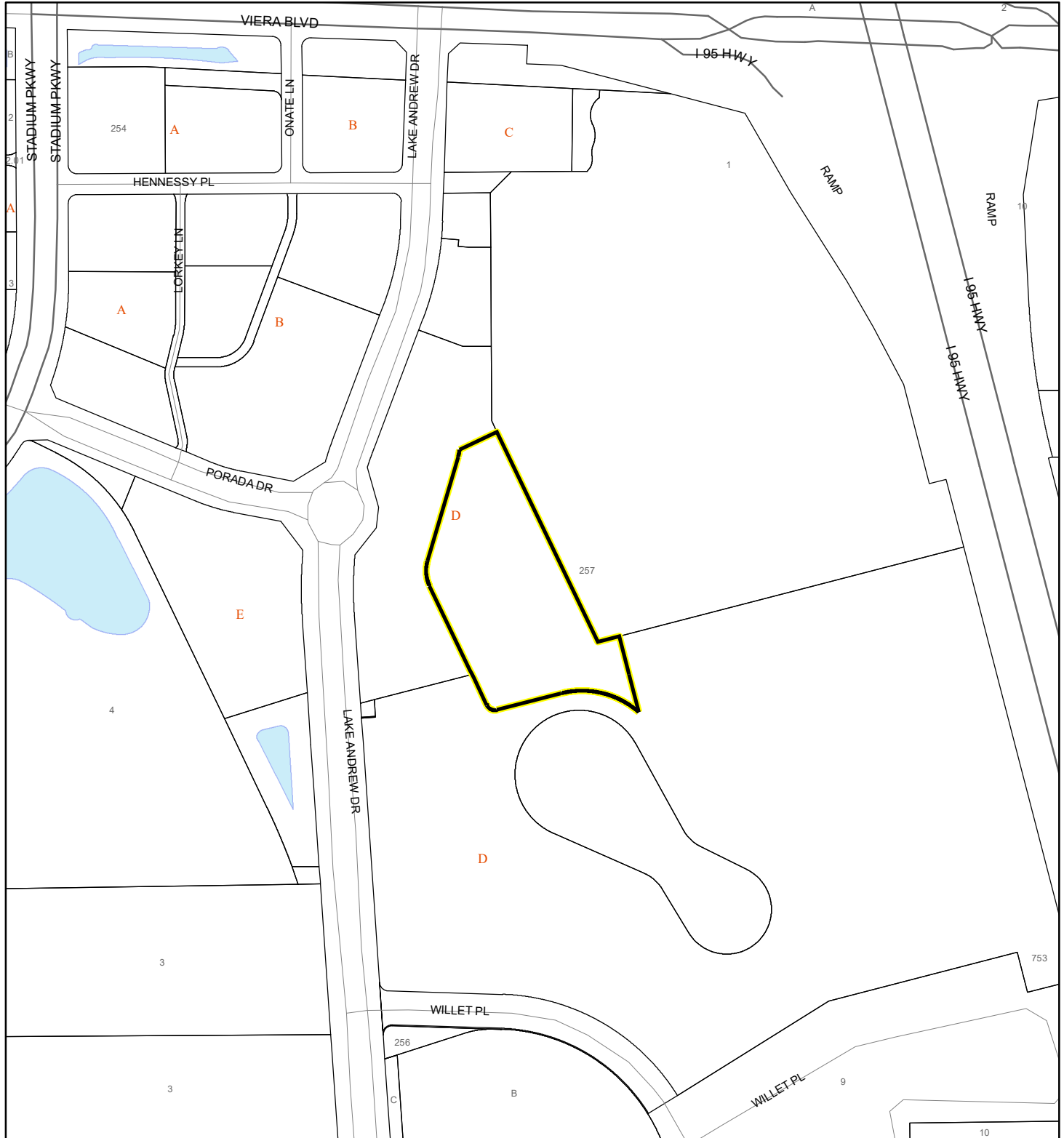
 Eagle Nests  
FWS



# SCRUB JAY OCCUPANCY MAP

BORROWS WEST HOTEL DEVELOPERS LLC




24Z00030



1:4,800 or 1 inch = 400 feet

This map was compiled from recorded documents and does not reflect an actual survey. The Brevard County Board of County Commissioners does not assume responsibility for errors or omissions hereon.

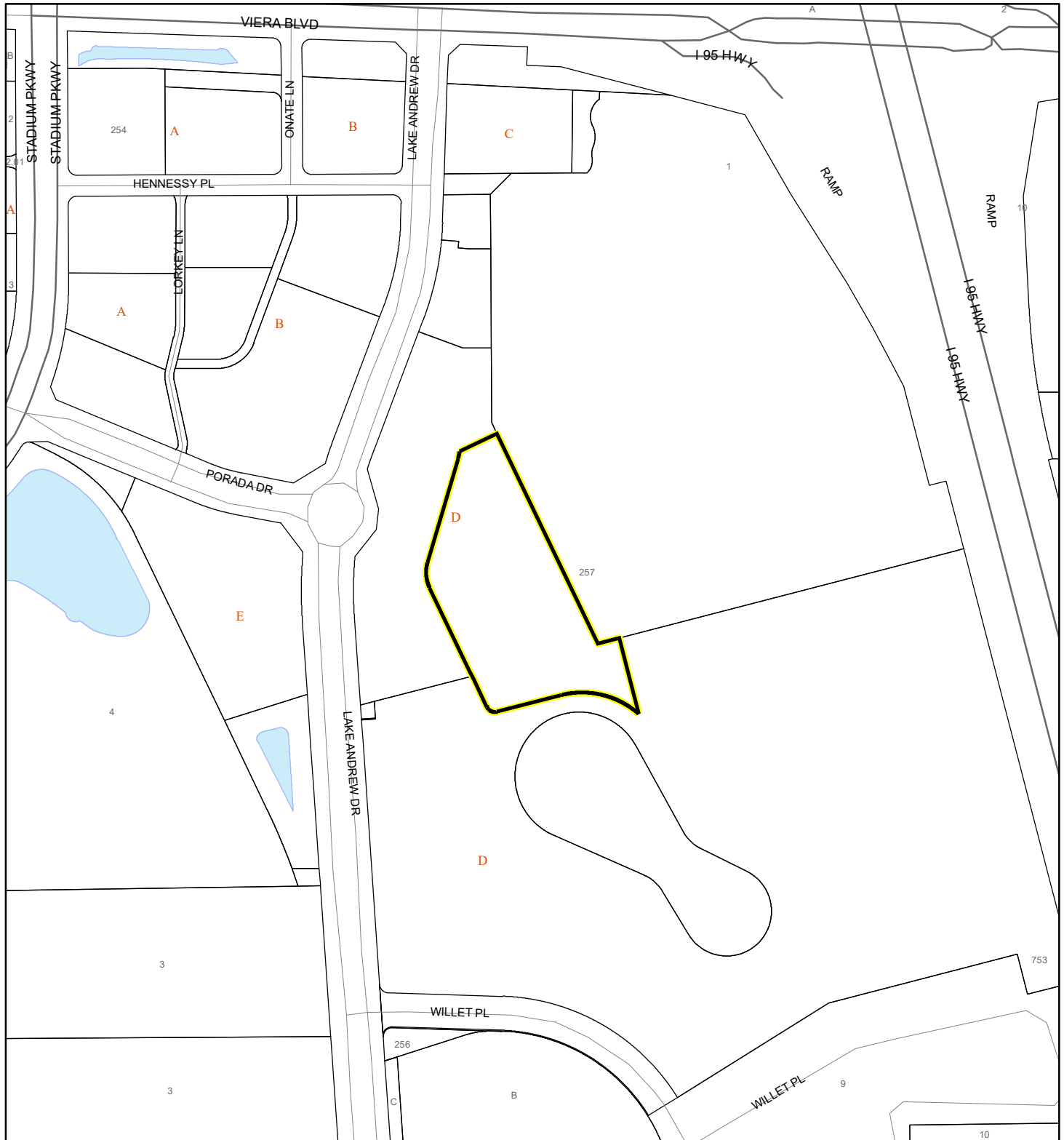
Produced by BoCC - GIS Date: 6/17/2024

-  Subject Property
-  Parcels
-  Scrub Jay Occupancy

# SJRWMD FLUCCS UPLAND FORESTS - 4000 Series MAP

BORROWS WEST HOTEL DEVELOPERS LLC

24Z00030



1:4,800 or 1 inch = 400 feet

This map was compiled from recorded documents and does not reflect an actual survey. The Brevard County Board of County Commissioners does not assume responsibility for errors or omissions hereon.

Produced by BoCC - GIS Date: 6/17/2024

## SJRWMD FLUCCS Upland Forests

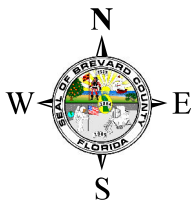
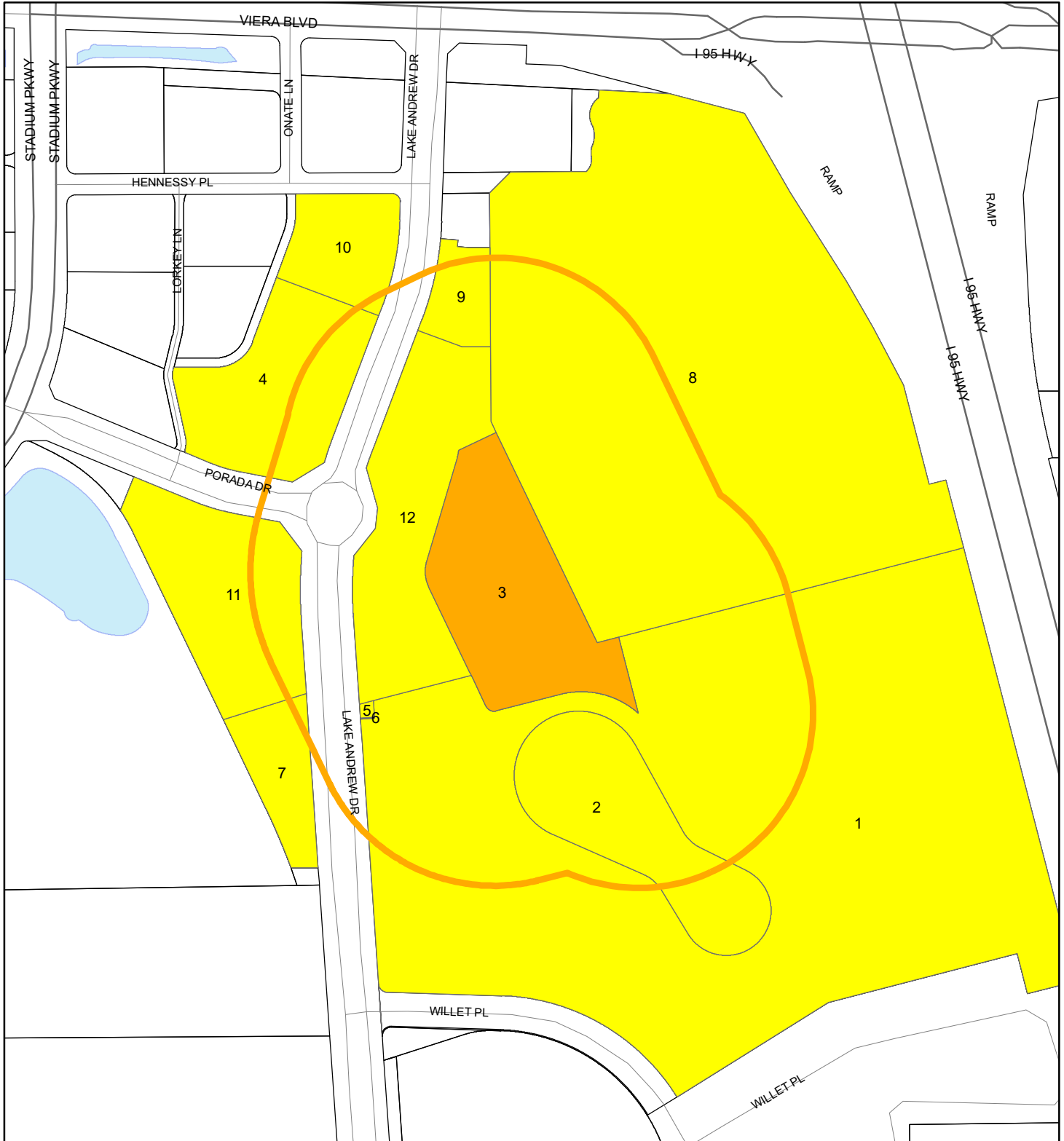
- Upland Coniferous Forest - 4100 Series
- Upland Hardwood Forest - 4200 Series
- Upland Mixed Forest - 4300 Series
- Tree Plantations - 4400 Series

Subject Property

Parcels

# RADIUS MAP

BORROWS WEST HOTEL DEVELOPERS LLC  
24Z00030







1:4,800 or 1 inch = 400 feet

Buffer Distance: 500 feet

This map was compiled from recorded documents and does not reflect an actual survey. The Brevard County Board of County Commissioners does not assume responsibility for errors or omissions hereon.

Produced by BoCC - GIS Date: 6/17/2024

-  Buffer
-  Subject Property
-  Notify Property
-  Parcels