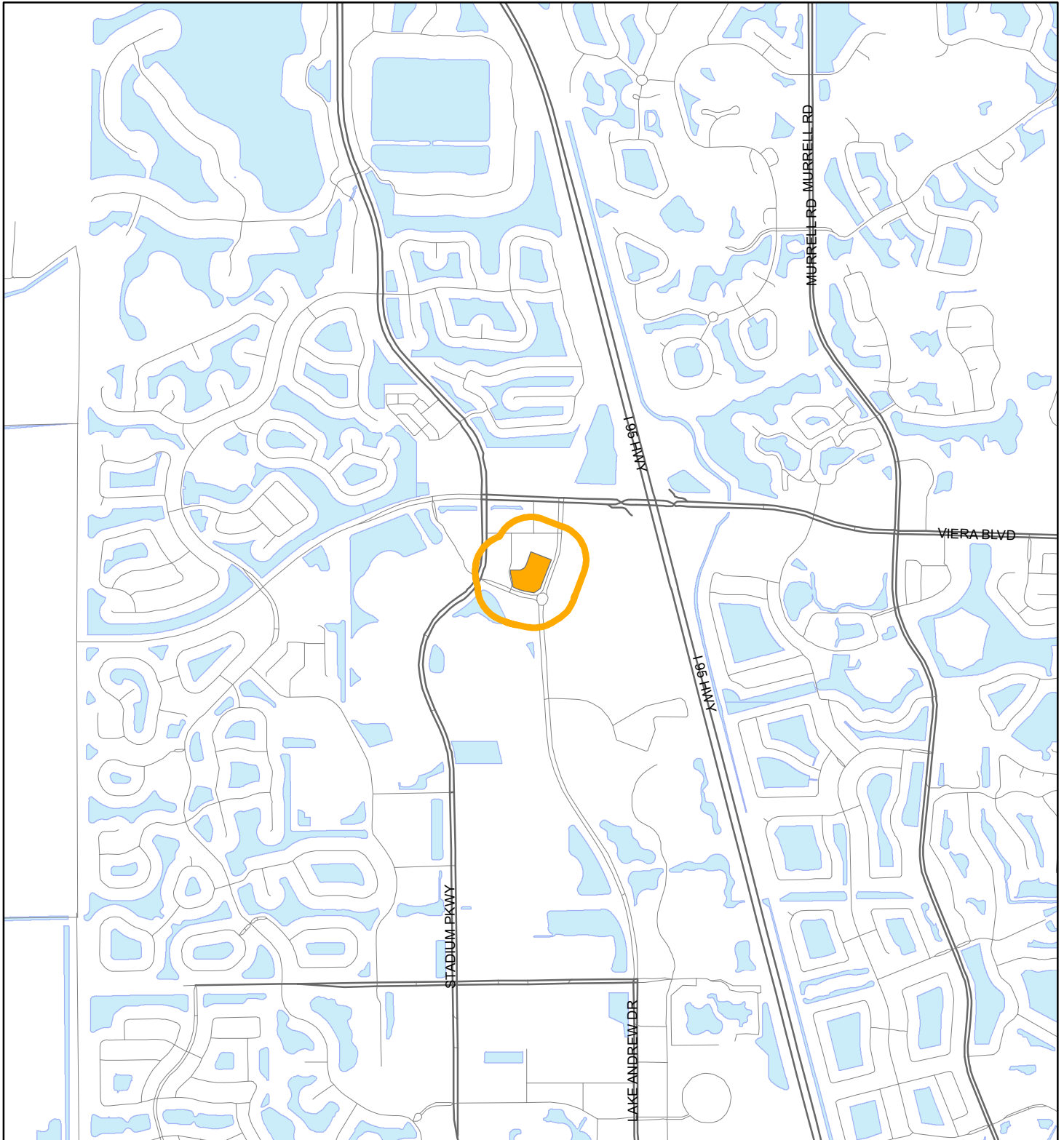


# LOCATION MAP

BORROWS WEST SUITES DEVELOPERS LLC

24Z00019





1:24,000 or 1 inch = 2,000 feet

Buffer Distance: 500 feet

This map was compiled from recorded documents and does not reflect an actual survey. The Brevard County Board of County Commissioners does not assume responsibility for errors or omissions hereon.

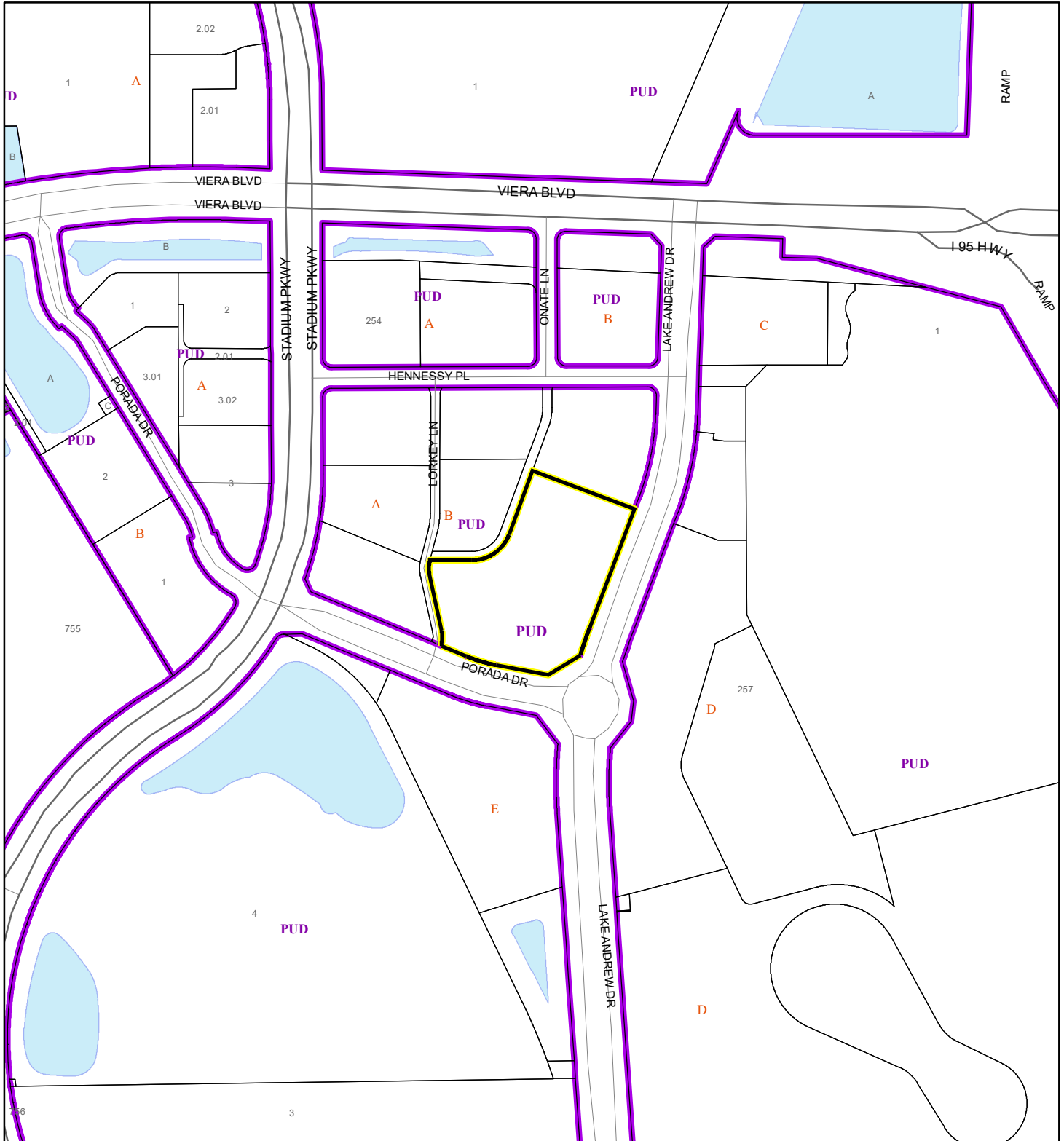
Produced by BoCC - GIS Date: 4/8/2024

 Buffer  
 Subject Property

# ZONING MAP

BORROWS WEST SUITES DEVELOPERS LLC


24Z00019



1:4,800 or 1 inch = 400 feet

This map was compiled from recorded documents and does not reflect an actual survey. The Brevard County Board of County Commissioners does not assume responsibility for errors or omissions hereon.

Produced by BoCC - GIS Date: 4/8/2024

 Subject Property

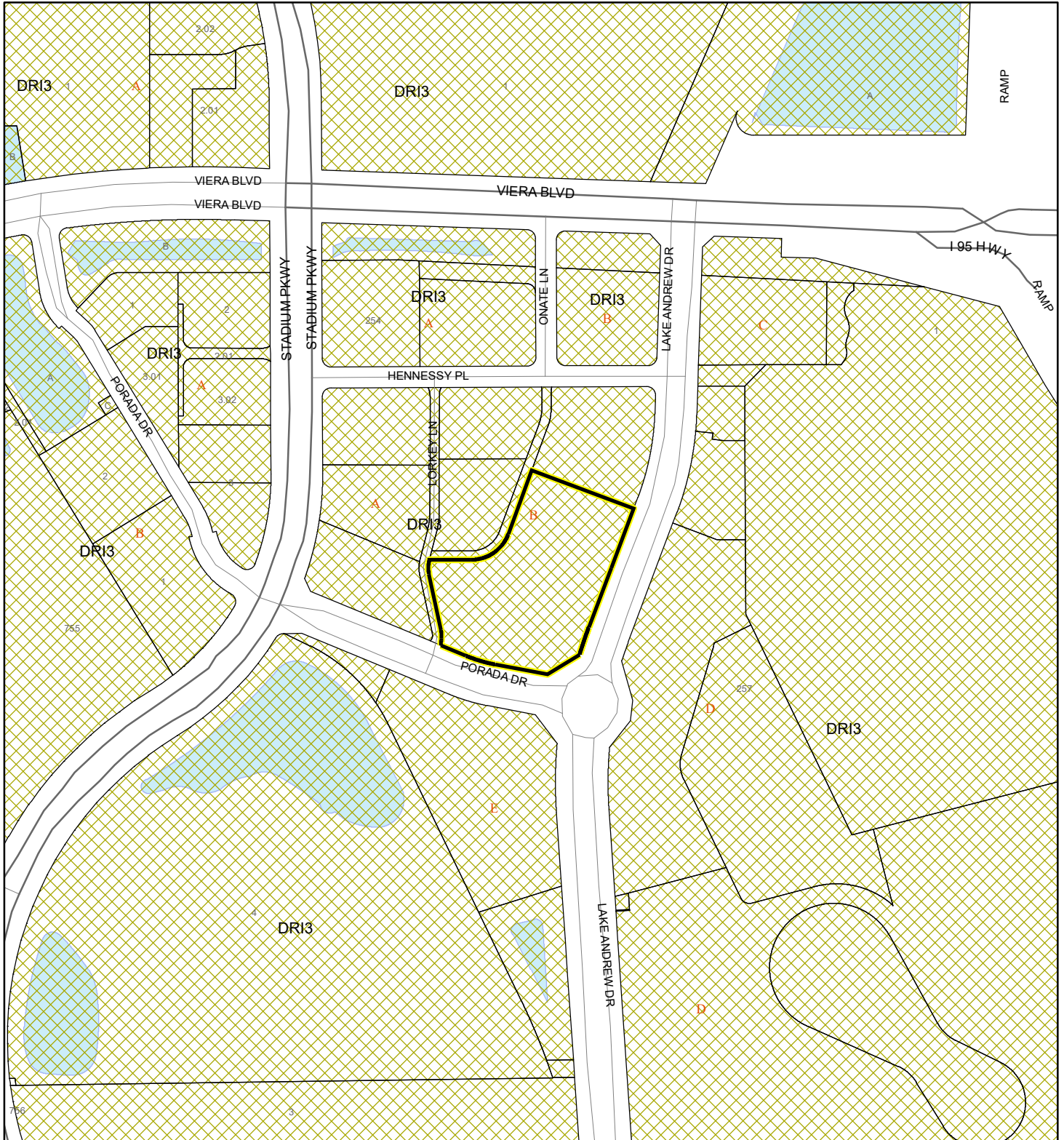
 Parcels

 Zoning



# FUTURE LAND USE MAP

BORROWS WEST SUITES DEVELOPERS LLC

24Z00019



1:4,800 or 1 inch = 400 feet

 Subject Property  
 Parcels

This map was compiled from recorded documents and does not reflect an actual survey. The Brevard County Board of County Commissioners does not assume responsibility for errors or omissions hereon.

Produced by BoCC - GIS Date: 4/8/2024



# AERIAL MAP

BORROWS WEST SUITES DEVELOPERS LLC

24Z00019




1:4,800 or 1 inch = 400 feet

PHOTO YEAR: 2023

This map was compiled from recorded documents and does not reflect an actual survey. The Brevard County Board of County Commissioners does not assume responsibility for errors or omissions hereon.

Produced by BoCC - GIS Date: 4/8/2024

 Subject Property

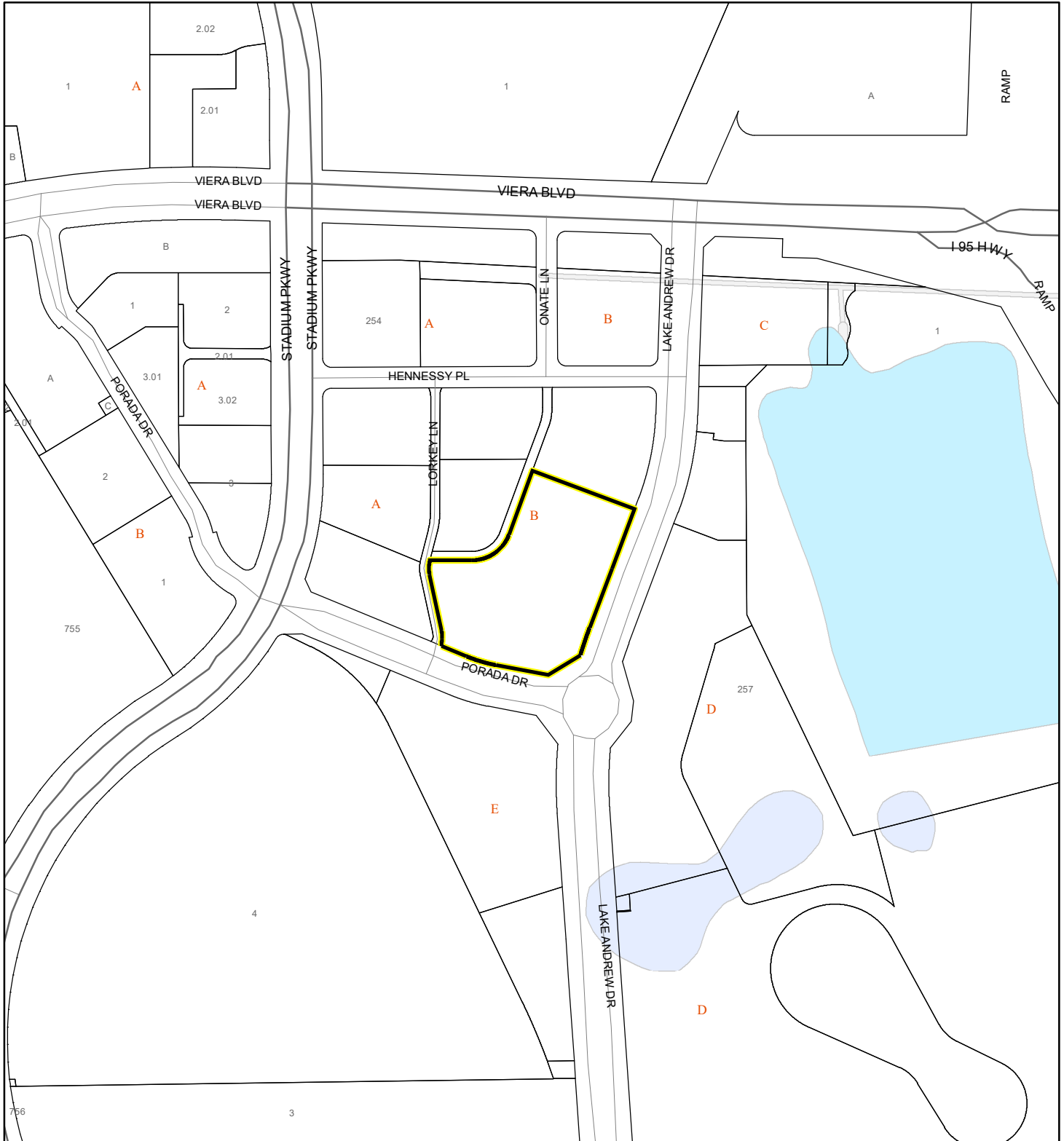
 Parcels



# NWI WETLANDS MAP

BORROWS WEST SUITES DEVELOPERS LLC

24Z00019






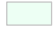

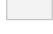




1:4,800 or 1 inch = 400 feet

This map was compiled from recorded documents and does not reflect an actual survey. The Brevard County Board of County Commissioners does not assume responsibility for errors or omissions hereon.

Produced by BoCC - GIS Date: 4/8/2024

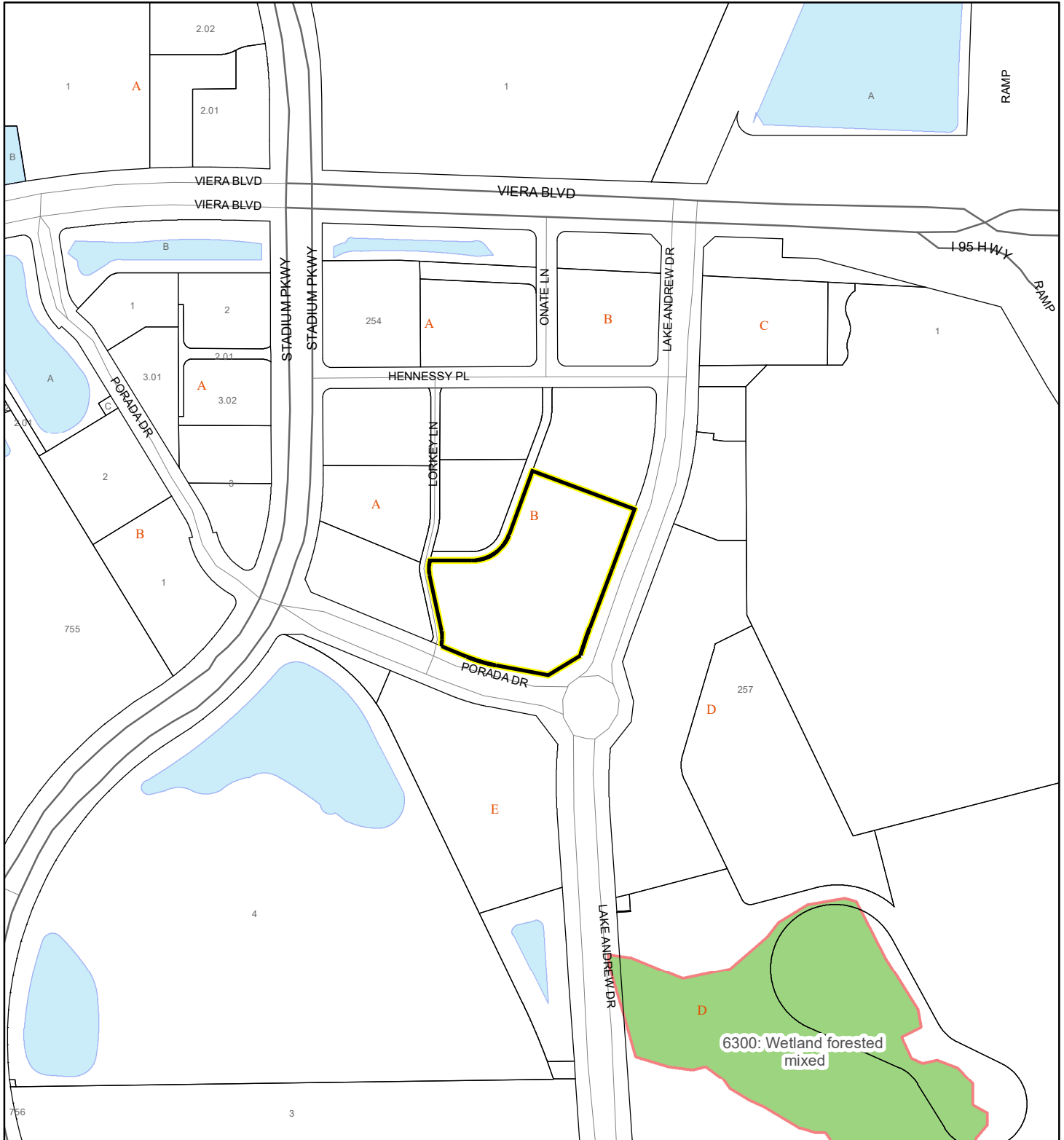
## National Wetlands Inventory (NWI)

 Estuarine and Marine Deepwater	 Freshwater Pond
 Estuarine and Marine Wetland	 Lake
 Freshwater Emergent Wetland	 Other
 Freshwater Forested/Shrub Wetland	 Riverine
	 Subject Property
	 Parcels

# SJRWMD FLUCCS WETLANDS - 6000 Series MAP

BORROWS WEST SUITES DEVELOPERS LLC

24Z00019



1:4,800 or 1 inch = 400 feet

This map was compiled from recorded documents and does not reflect an actual survey. The Brevard County Board of County Commissioners does not assume responsibility for errors or omissions hereon.

Produced by BoCC - GIS Date: 4/8/2024

## SJRWMD FLUCCS WETLANDS

- Wetland Hardwood Forests - Series 6100
- Wetland Coniferous Forest - Series 6200
- Wetland Forested Mixed - Series 6300
- Vegetated Non-Forested Wetlands - Series 6400
- Non-Vegetated Wetland - Series 6500

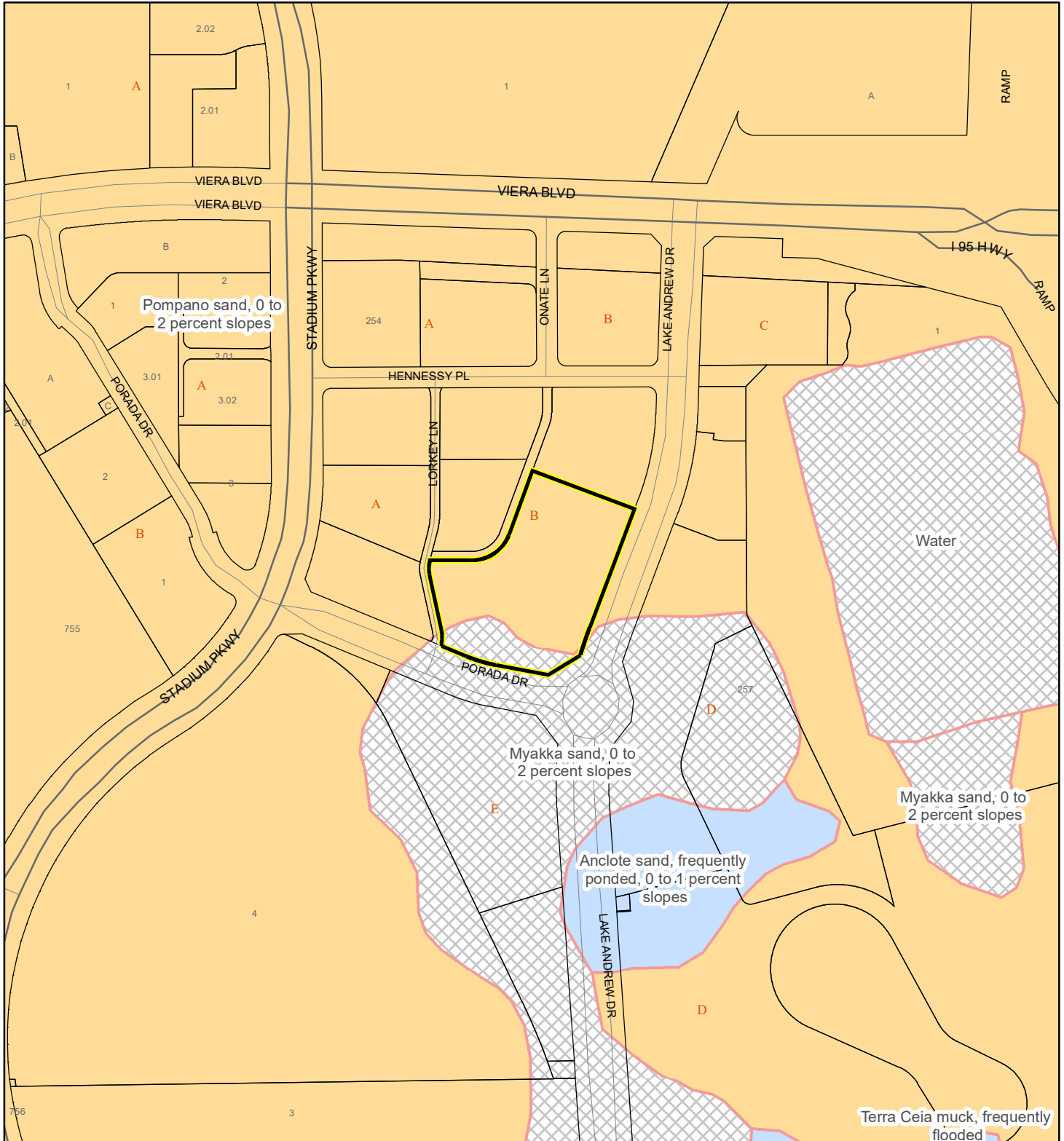
Subject Property

Parcels

# USDA SCSSS SOILS MAP

BORROWS WEST SUITES DEVELOPERS LLC

24Z00019



1:4,800 or 1 inch = 400 feet

This map was compiled from recorded documents and does not reflect an actual survey. The Brevard County Board of County Commissioners does not assume responsibility for errors or omissions hereon.

Produced by BoCC - GIS Date: 4/8/2024

## USDA SCSSS Soils

- Aquifer and Hydric
- Aquifer
- Hydric
- None

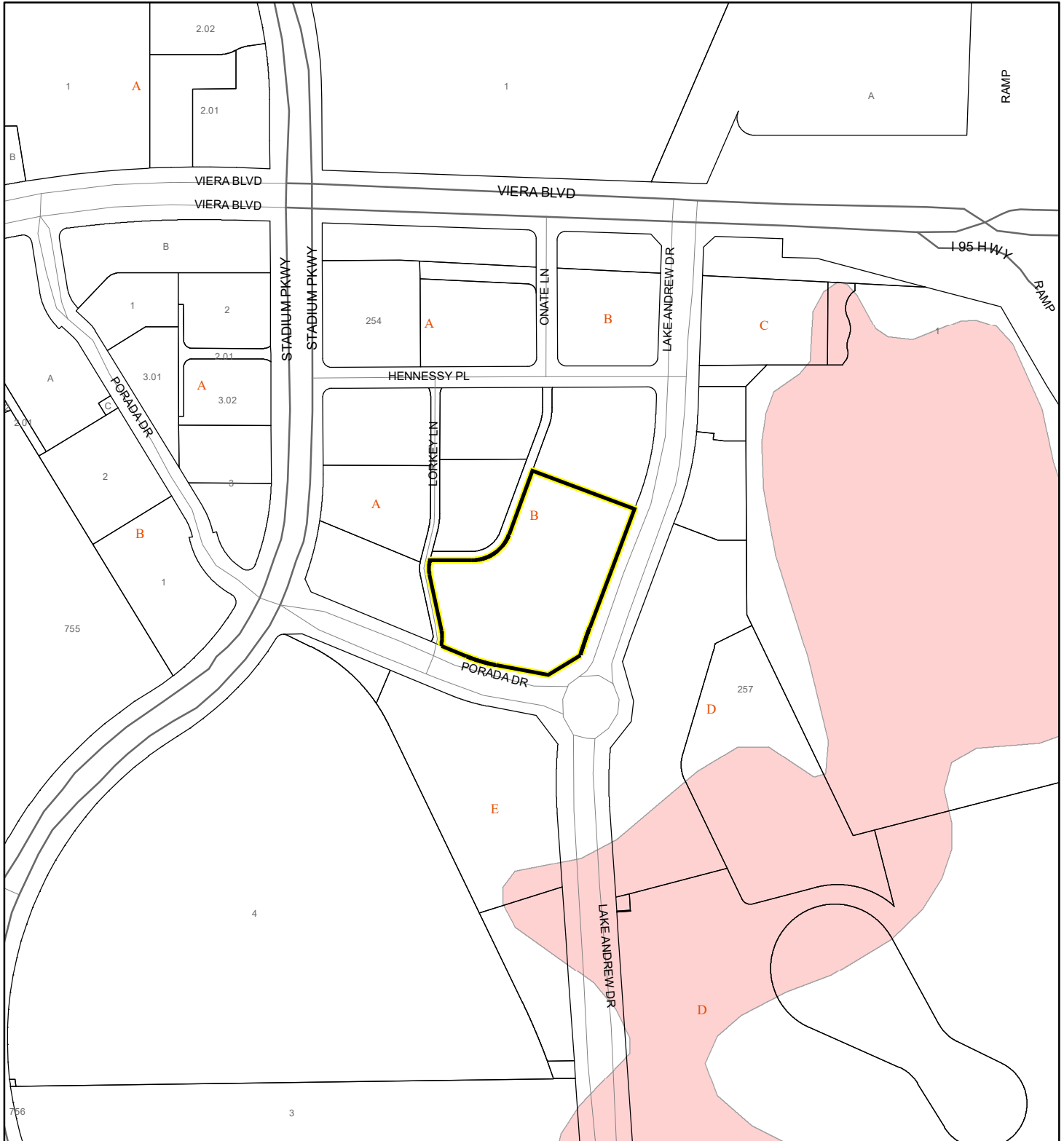
Subject Property

Parcels

# FEMA FLOOD ZONES MAP

BORROWS WEST SUITES DEVELOPERS LLC

24Z00019



1:4,800 or 1 inch = 400 feet

This map was compiled from recorded documents and does not reflect an actual survey. The Brevard County Board of County Commissioners does not assume responsibility for errors or omissions hereon.

Produced by BoCC - GIS Date: 4/8/2024

## FEMA Flood Zones

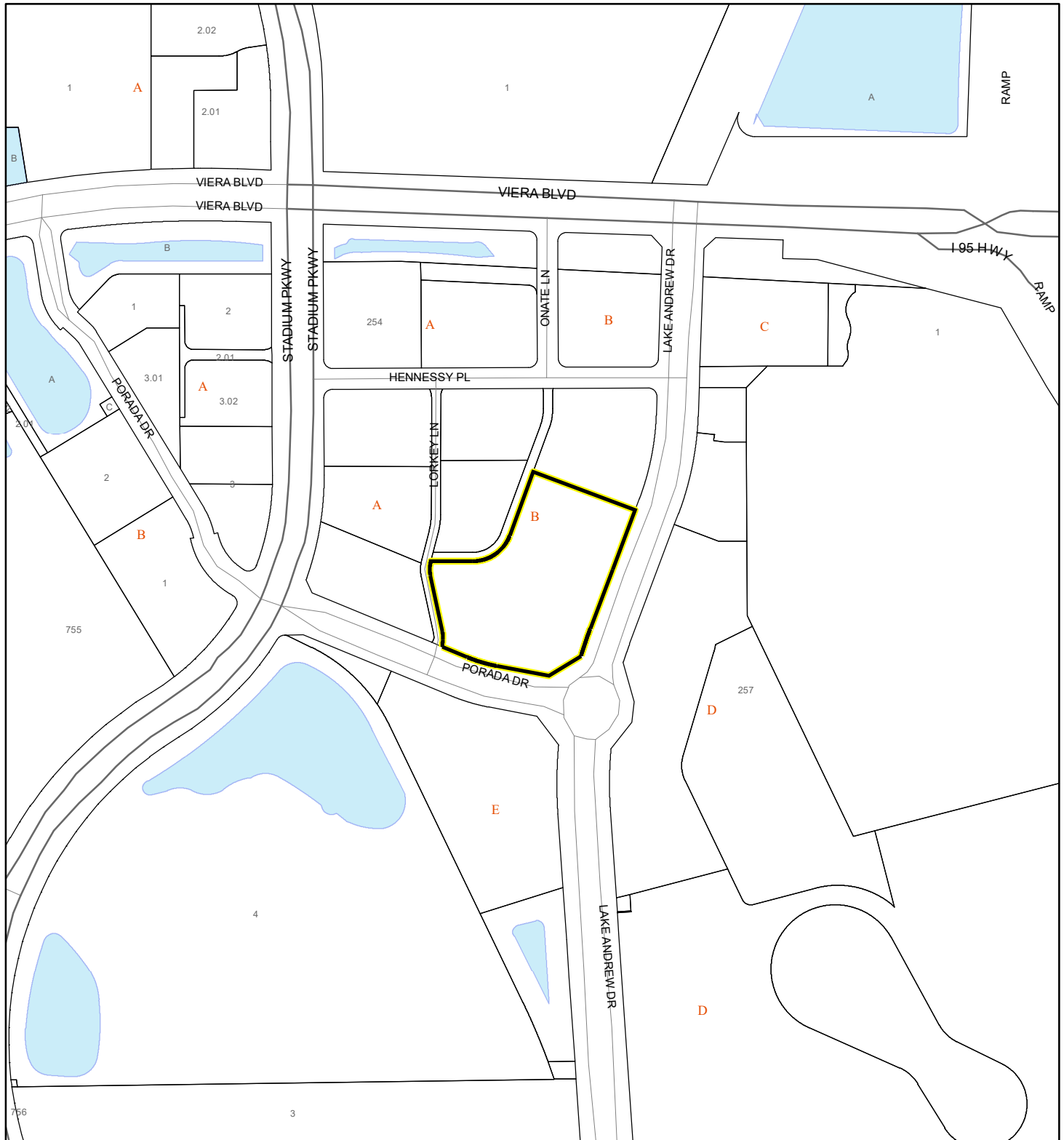
A	AO	X
AE	Open Water	
AH	VE	
Subject Property	Parcels	



# COASTAL HIGH HAZARD AREA MAP

BORROWS WEST SUITES DEVELOPERS LLC

24Z00019



1:4,800 or 1 inch = 400 feet

This map was compiled from recorded documents and does not reflect an actual survey. The Brevard County Board of County Commissioners does not assume responsibility for errors or omissions hereon.

Produced by BoCC - GIS Date: 4/8/2024

 Subject Property

 Parcels

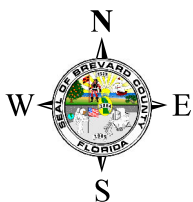
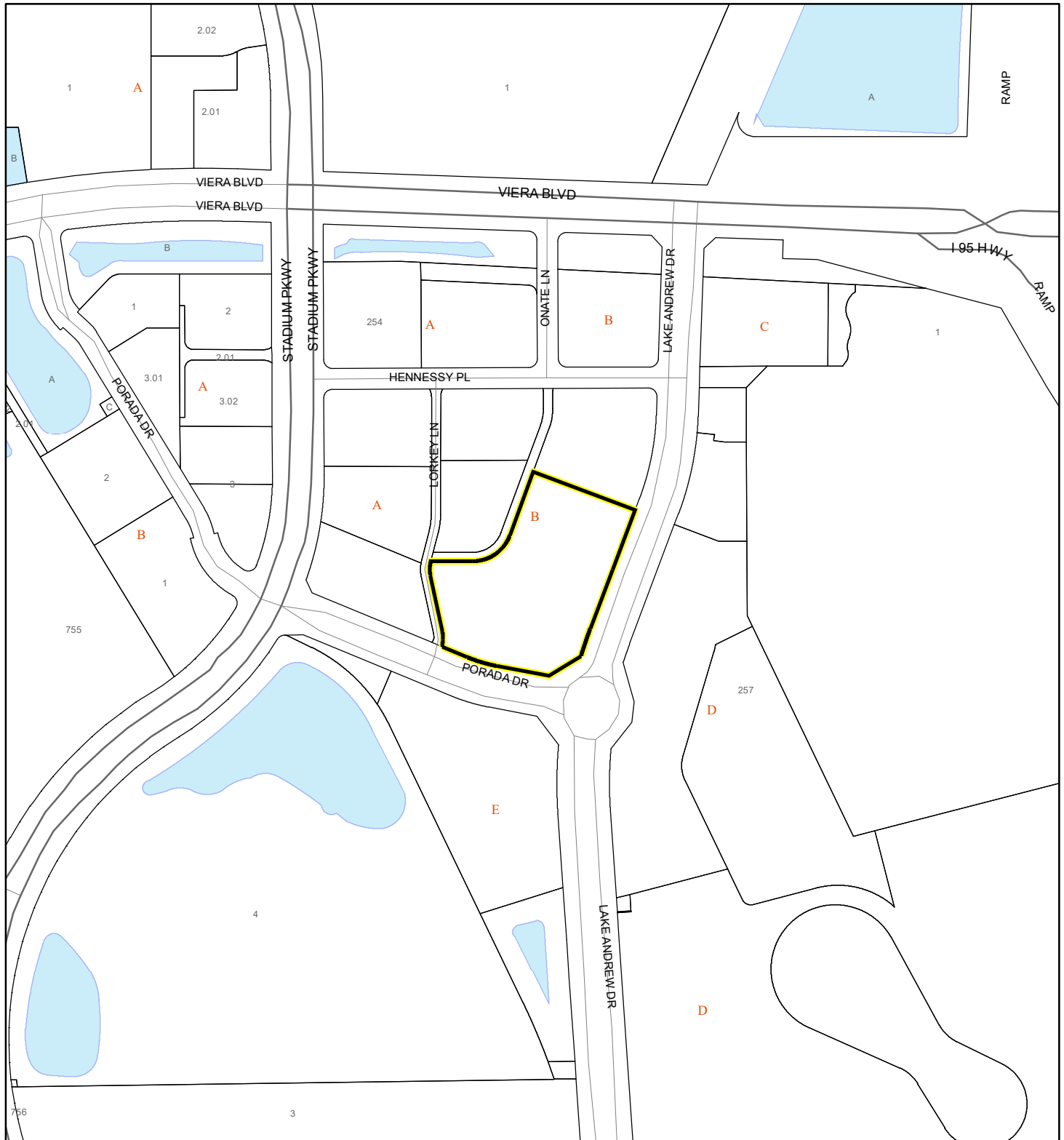
**Coastal High Hazard Area**

 SurgeZoneCat1

# INDIAN RIVER LAGOON SEPTIC OVERLAY MAP

BORROWS WEST SUITES DEVELOPERS LLC

24Z00019



1:4,800 or 1 inch = 400 feet

This map was compiled from recorded documents and does not reflect an actual survey. The Brevard County Board of County Commissioners does not assume responsibility for errors or omissions hereon.

Produced by BoCC - GIS Date: 4/8/2024

 Subject Property

 Parcels

## Septic Overlay

 40 Meters

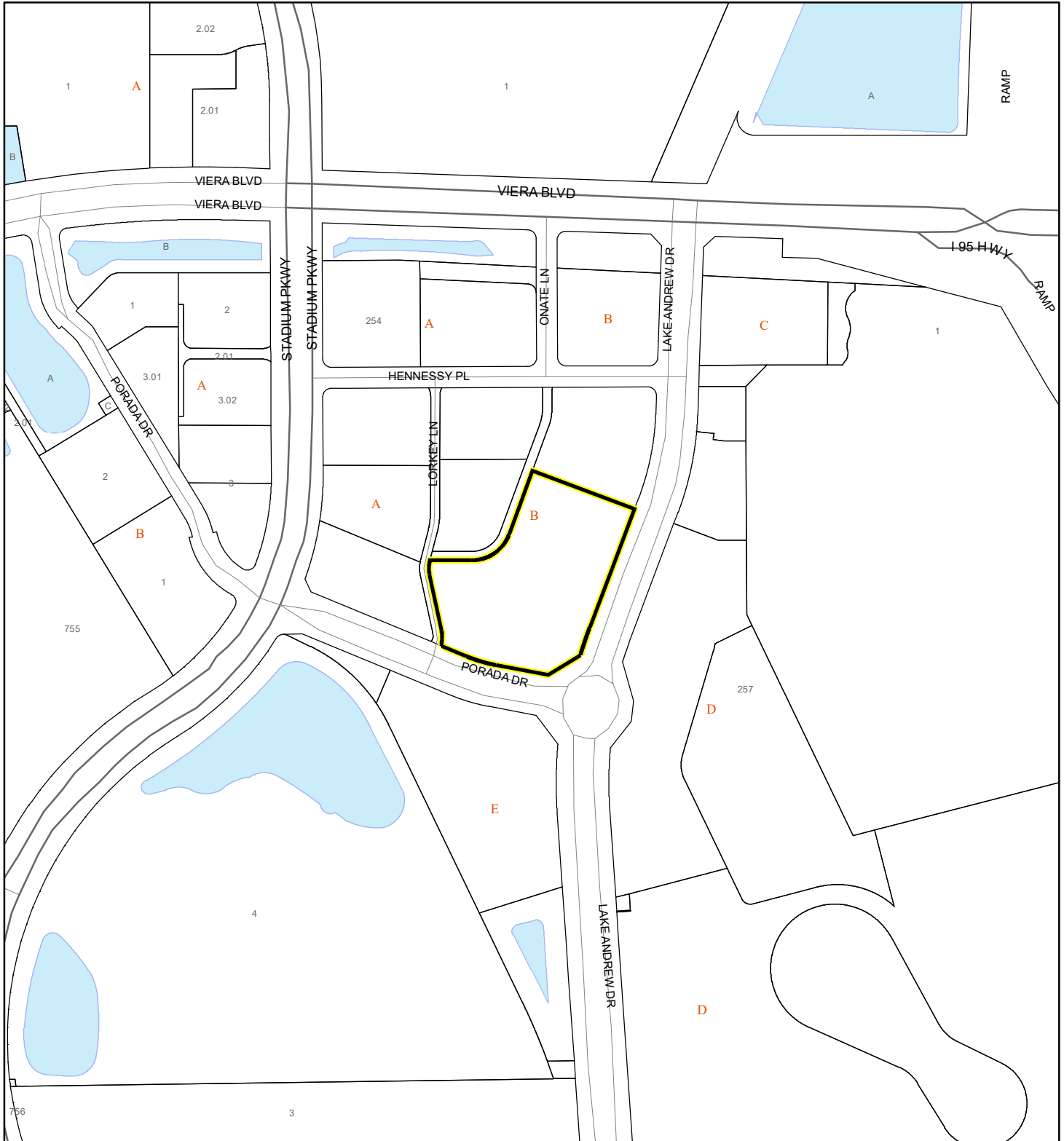
 60 Meters

 All Distances

# EAGLE NESTS MAP

BORROWS WEST SUITES DEVELOPERS LLC

24Z00019



1:4,800 or 1 inch = 400 feet

This map was compiled from recorded documents and does not reflect an actual survey. The Brevard County Board of County Commissioners does not assume responsibility for errors or omissions hereon.

Produced by BoCC - GIS Date: 4/8/2024

 Subject Property

 Parcels

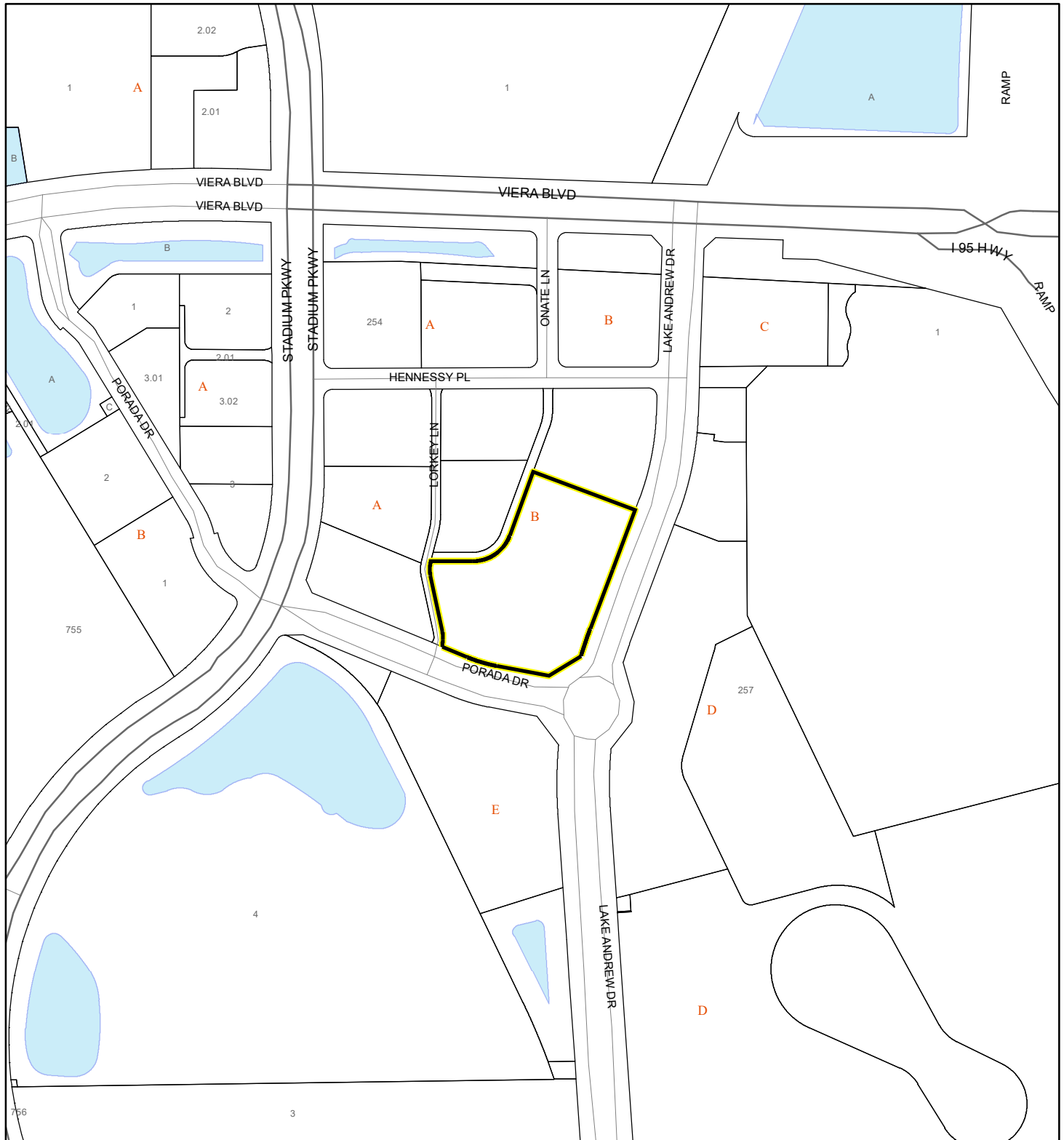
 Eagle Nests  
FWS



# SCRUB JAY OCCUPANCY MAP

BORROWS WEST SUITES DEVELOPERS LLC




24Z00019



1:4,800 or 1 inch = 400 feet

This map was compiled from recorded documents and does not reflect an actual survey. The Brevard County Board of County Commissioners does not assume responsibility for errors or omissions hereon.

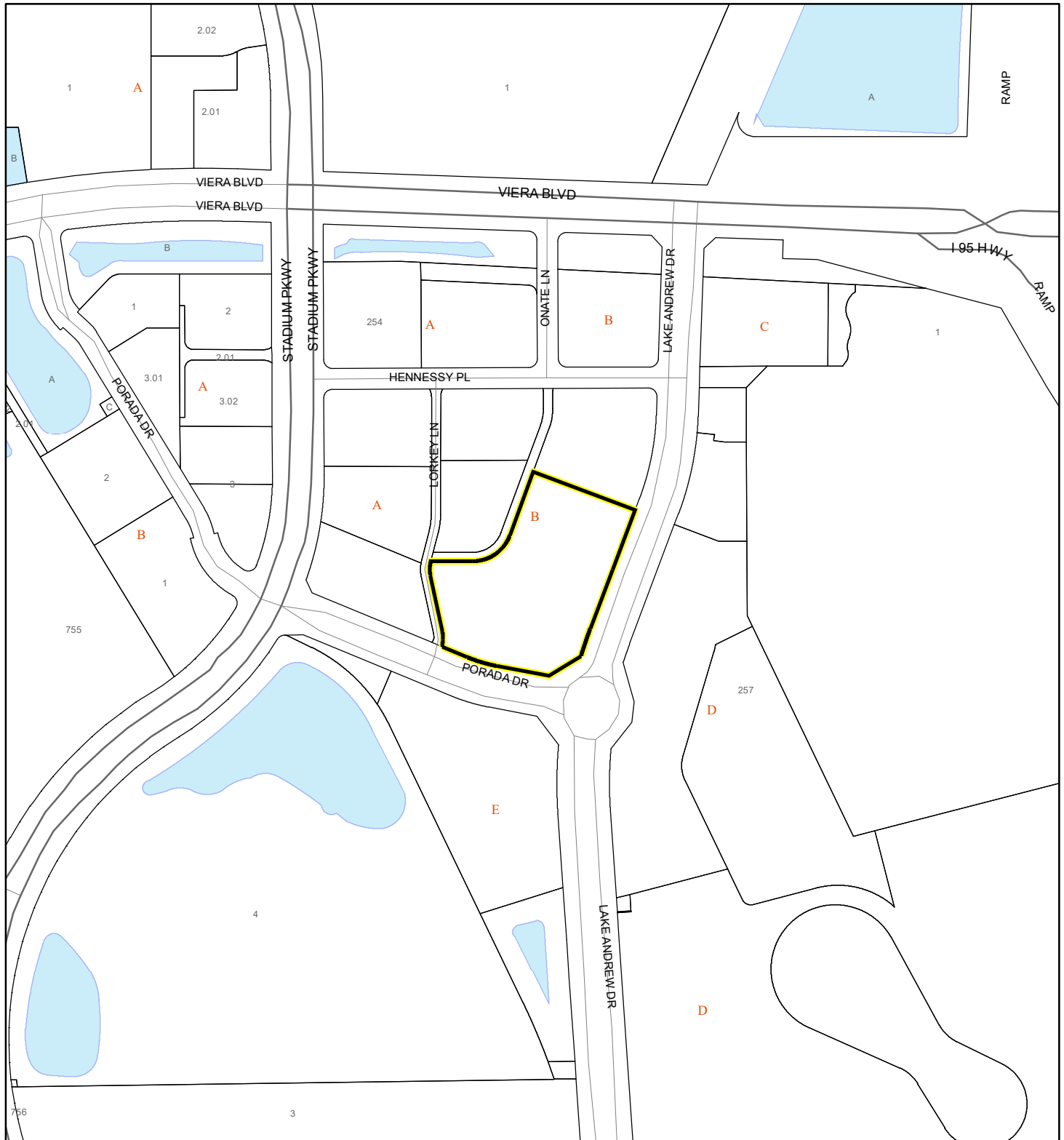
Produced by BoCC - GIS Date: 4/8/2024

-  Subject Property
-  Parcels
-  Scrub Jay Occupancy

# SJRWMD FLUCCS UPLAND FORESTS - 4000 Series MAP

BORROWS WEST SUITES DEVELOPERS LLC

24Z00019

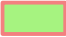





1:4,800 or 1 inch = 400 feet

This map was compiled from recorded documents and does not reflect an actual survey. The Brevard County Board of County Commissioners does not assume responsibility for errors or omissions hereon.

Produced by BoCC - GIS Date: 4/8/2024

## SJRWMD FLUCCS Upland Forests

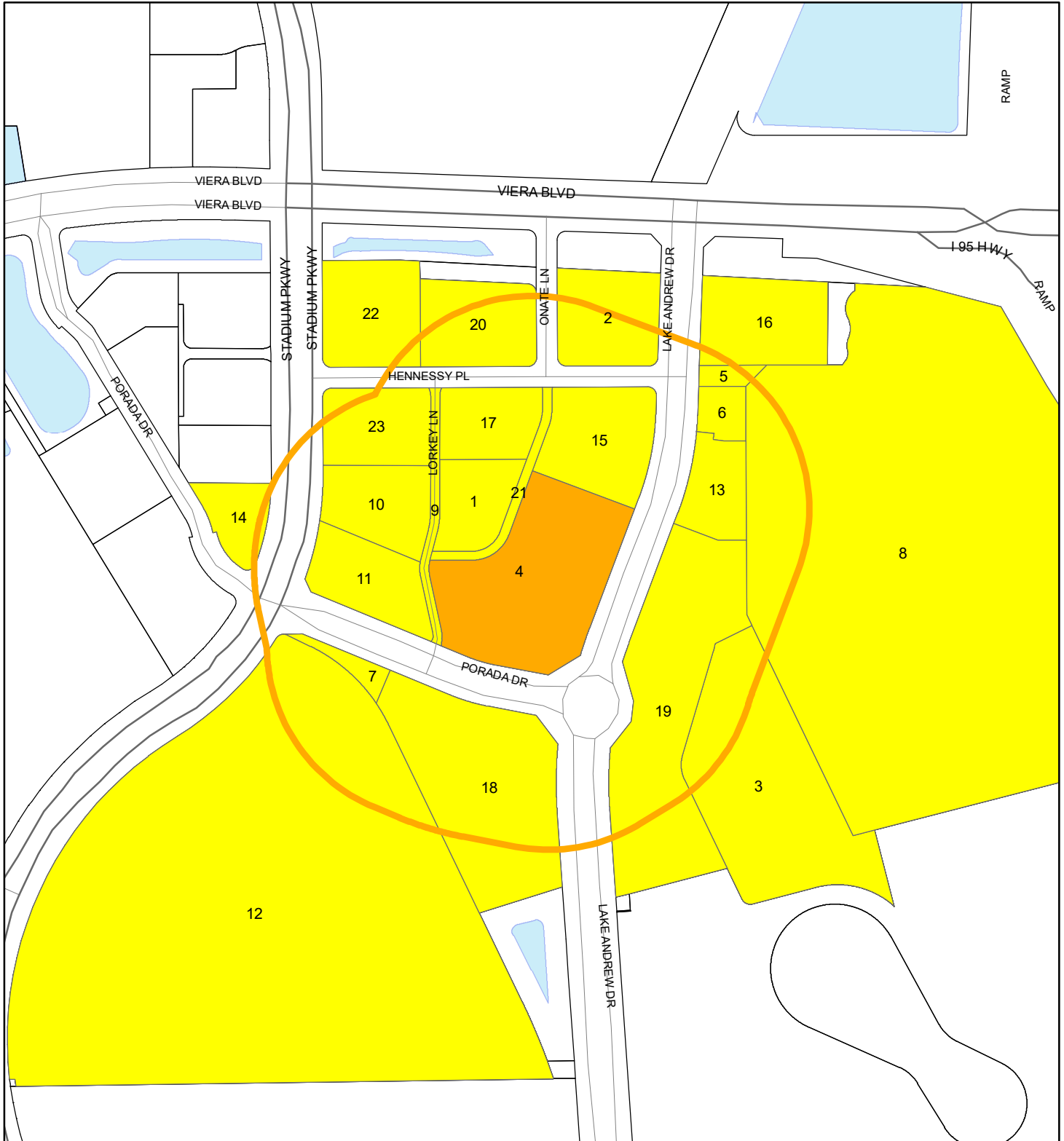
-  Upland Coniferous Forest - 4100 Series
-  Upland Hardwood Forest - 4200 Series
-  Upland Mixed Forest - 4300 Series
-  Tree Plantations - 4400 Series

 Subject Property  Parcels

# RADIUS MAP

BORROWS WEST SUITES DEVELOPERS LLC

24Z00019



1:4,800 or 1 inch = 400 feet

Buffer Distance: 500 feet

This map was compiled from recorded documents and does not reflect an actual survey. The Brevard County Board of County Commissioners does not assume responsibility for errors or omissions hereon.

Produced by BoCC - GIS Date: 4/8/2024

- Buffer
- Subject Property
- Notify Property
- Parcels