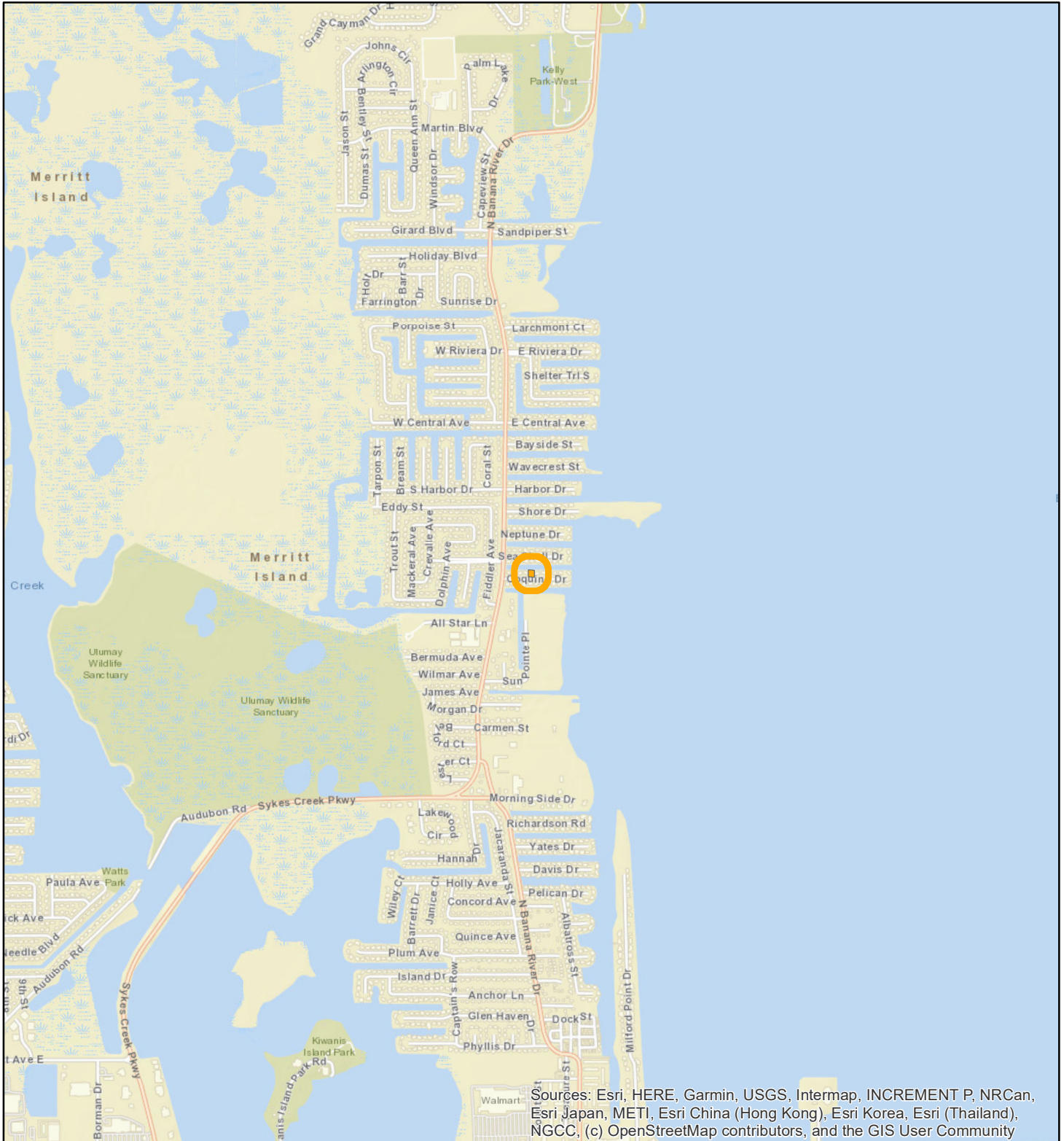


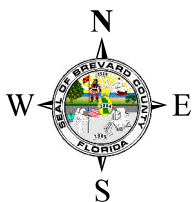
LOCATION MAP

VH PROPERTIES LLC

26V00025



Sources: Esri, HERE, Garmin, USGS, Intermap, INCREMENT P, NRCan, Esri Japan, METI, Esri China (Hong Kong), Esri Korea, Esri (Thailand), NGCC, (c) OpenStreetMap contributors, and the GIS User Community





1:24,000 or 1 inch = 2,000 feet

Buffer Distance: 200 feet

This map was compiled from recorded documents and does not reflect an actual survey. The Brevard County Board of County Commissioners does not assume responsibility for errors or omissions hereon.

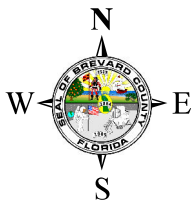
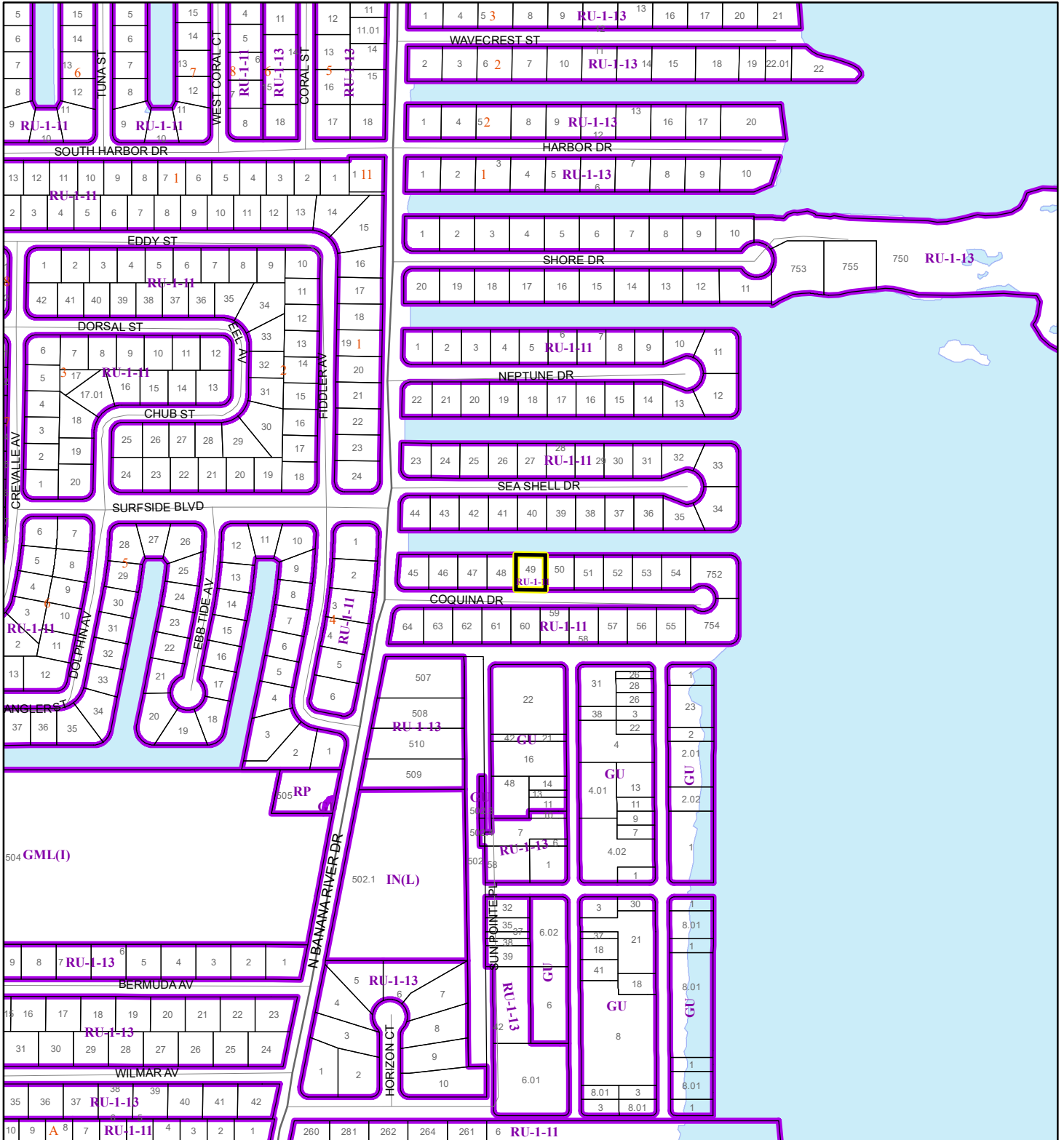
Produced by BoCC - GIS Date: 3/31/2026

-  Buffer
-  Subject Property


ZONING MAP

VH PROPERTIES LLC

26V00025



1:4,800 or 1 inch = 400 feet

 Subject Property

 Parcels

 Zoning

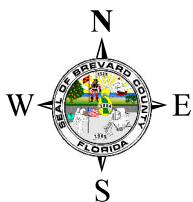
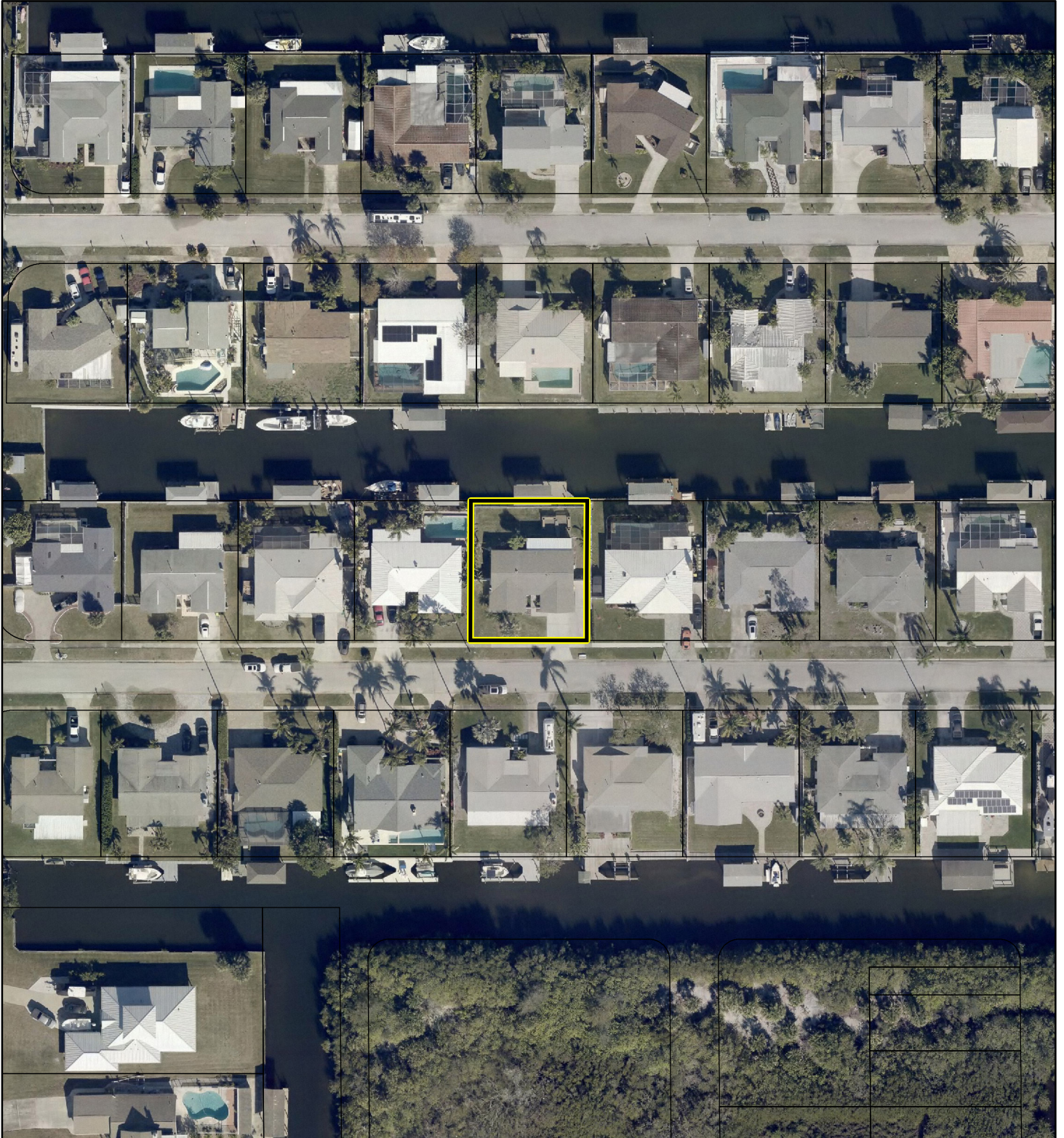
This map was compiled from recorded documents and does not reflect an actual survey. The Brevard County Board of County Commissioners does not assume responsibility for errors or omissions hereon.

Produced by BoCC - GIS Date: 3/31/2026

AERIAL MAP

VH PROPERTIES LLC

26V00025




1:1,200 or 1 inch = 100 feet

PHOTO YEAR: 2025

This map was compiled from recorded documents and does not reflect an actual survey. The Brevard County Board of County Commissioners does not assume responsibility for errors or omissions hereon.

Produced by BoCC - GIS Date: 3/31/2026

 Subject Property

 Parcels