



Solid Waste Management Department

To protect public health by providing an efficient and environmentally sound Solid Waste Management System.

Introduction & Background



In 1967, “The Brevard County Solid Waste Disposal Act” was approved by the Florida Legislature.

(Chapter 67-1146, FS, 1967, as amended by Chapter 70-594, FS, 1970)

- Granted the Board of County Commissioners the power to establish a solid waste collection and disposal system.
- Required all entities in the County to use the system and prohibited disposal of waste generated outside the County, giving the County flow control over the waste stream.
- Granted the Board the authority to issue bonds to finance the system.
- Granted the Board the right to create exclusive franchises to help operate the system.

Introduction & Background



Solid waste facilities:

- 1977 - Central Disposal Facility (Class I)
- 1977 - Sarno Transfer Station (Class I)
- 1977 - Titusville Transfer Station (Class I)
- 1978 - Sarno Road Landfill (Class III)
- 1991 - US192 Site (under construction)
- 1995 - Mockingbird Way Mulching Facility

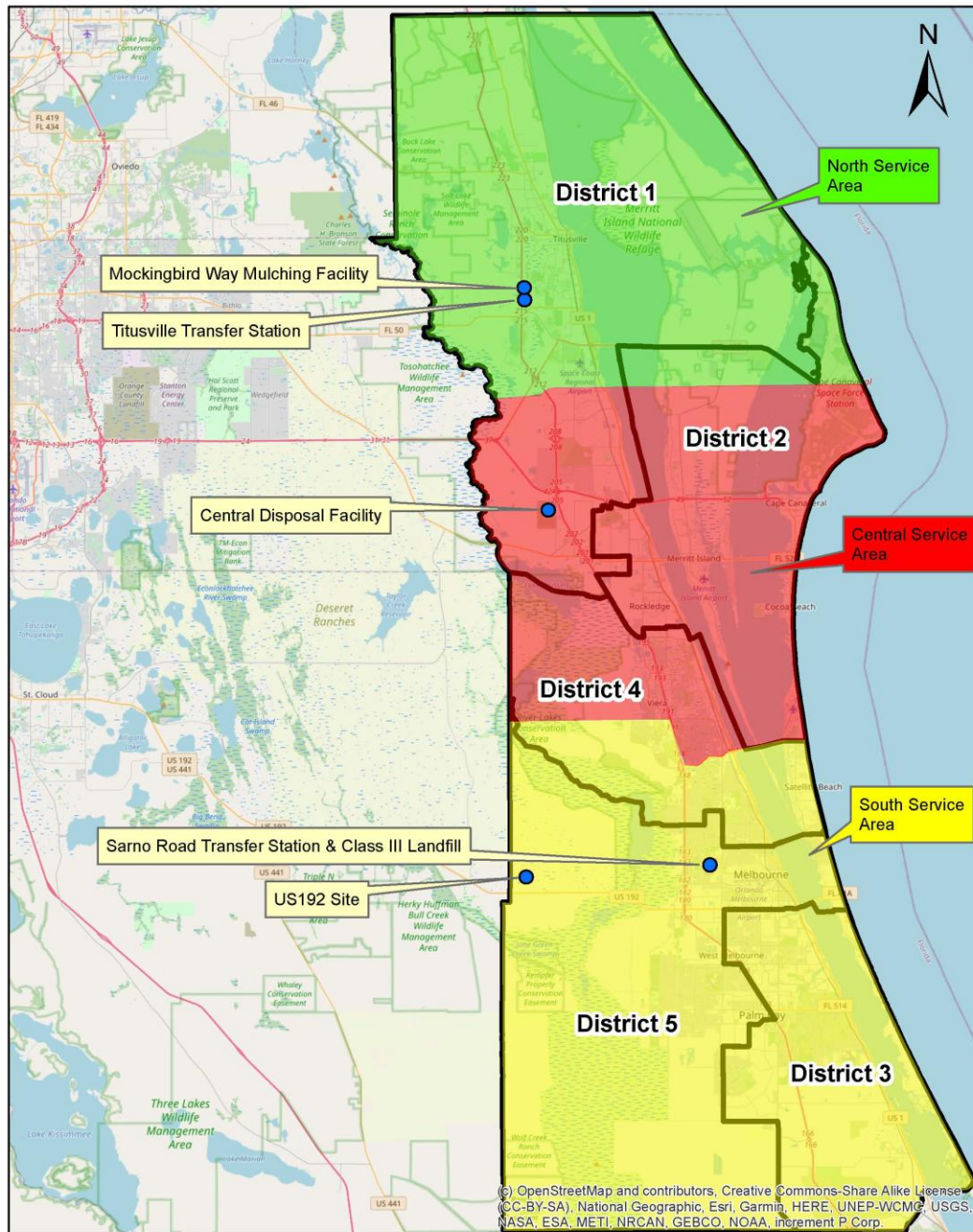


FIGURE 1.2 Brevard County Solid Waste Management Facilities & Service Area Boundaries



Waste Streams

- Class I Waste
 - Household Garbage
 - Construction & Demolition (C&D)
- Class III Waste
 - Construction & Demolition (C&D)
- Vegetative Waste
- White Goods
- Metals
- Tires
- Household Hazardous Waste

Birds!

The presence of birds indicates a Class I landfill



Other Activities



- Maintenance: We maintain our own fleet and facilities.



- Landfill Gas to Energy – In partnership with Brevard Energy LLC the plant burns the landfill gas for conversion to electricity sufficient to power 5,668 homes.



- A Renewable Natural Gas facility to make pipeline quality natural gas began operation in January 2026.



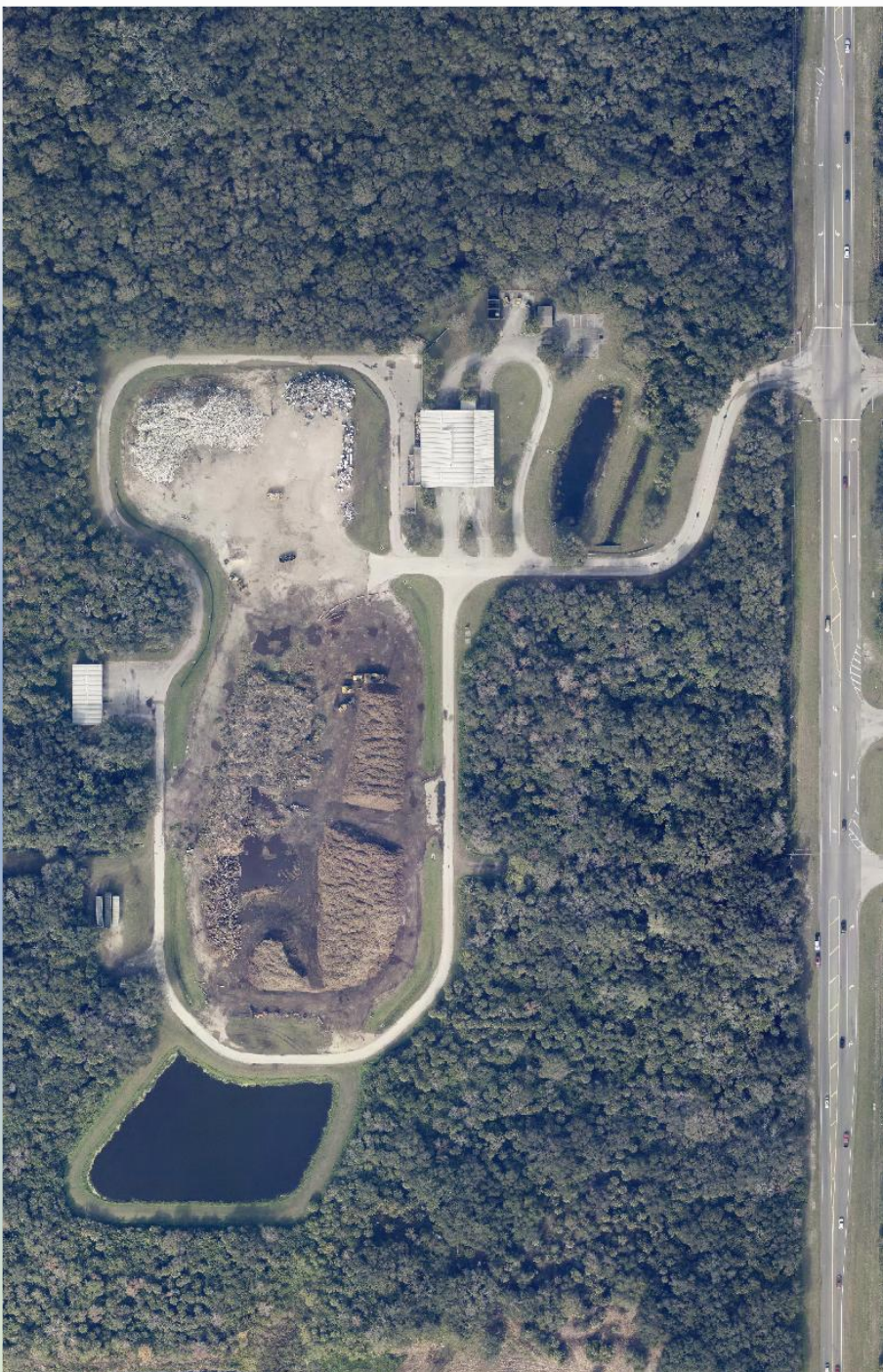
Central Disposal Facility 2024 Aerial Photo



Sarno Road Facility 2024 Aerial Photo



Titusville Transfer Station 2024 Aerial Photo



Mockingbird Way Mulching Facility 2024 Aerial Photo

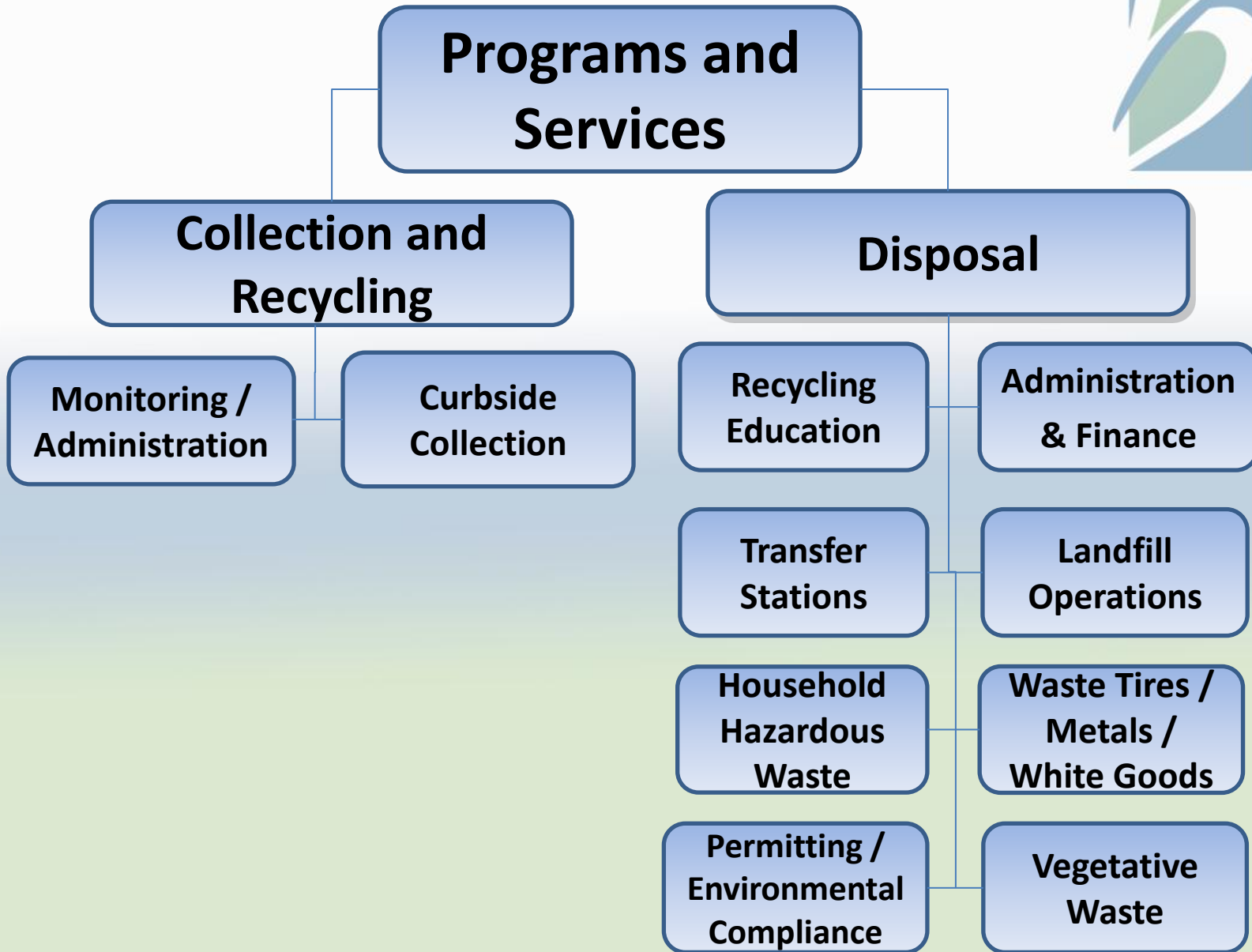


US192 Site Aerial Photo

US 192 Facility



- Site consists of 2,980 acres.
- Construction will occur in two phases:
 - Phase I (1,900 acres on south portion of property)
 - Class III Landfill (1st cell)
 - Leachate Collection / Storage / Transfer System
 - Yard Waste Facility with Metals and Waste Tires
 - Stormwater and Wetlands Improvements
 - Scale House
 - Temporary Personnel Office
 - Phase II (not to be considered prior to 2036)
 - Class I Landfill (1st cell)



Solid Waste Department Budget



FY2025-2026 APPROVED BUDGET

Solid Waste Collection:	\$ 28,484,412
Solid Waste Disposal:	\$ 35,523,891
Capital Improvement Projects:	\$ 38,318,185
Equipment Replacement:	\$ 6,807,458
Transfers (debt service, transfers):	\$ 16,971,217
<u>Restricted Reserves (closure):</u>	<u>\$ 41,305,957</u>
Total FY2025-2026 Budget	\$167,411,120

Total number of employees is 165

Collection (Unincorporated)

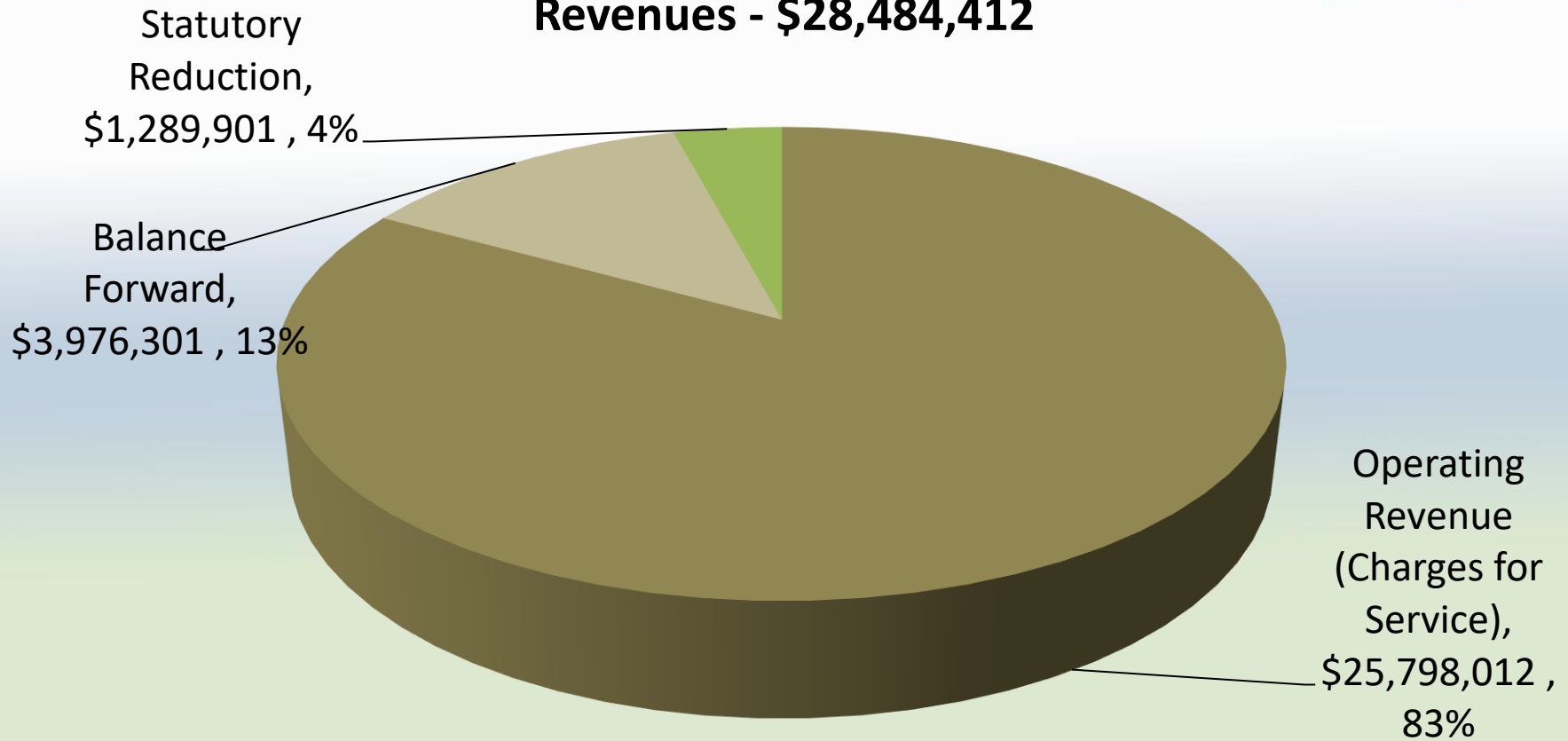


- Collection/Recycling – consists of all residential properties receiving collection services in the unincorporated areas of Brevard County and regulates the rates charged for collection services of commercial properties
 - Paid through Non-Ad Valorem Solid Waste Collection Assessment on annual tax bill
 - No Brevard County employees are paid from this fund
 - Waste Management of Florida holds current competitive contract (10/1/2020 through 9/30/2027)
 - 39% increase in rates in FY2020, 3% cap each following year
 - Reserve fund for Disaster Debris Collection



Collection Budget

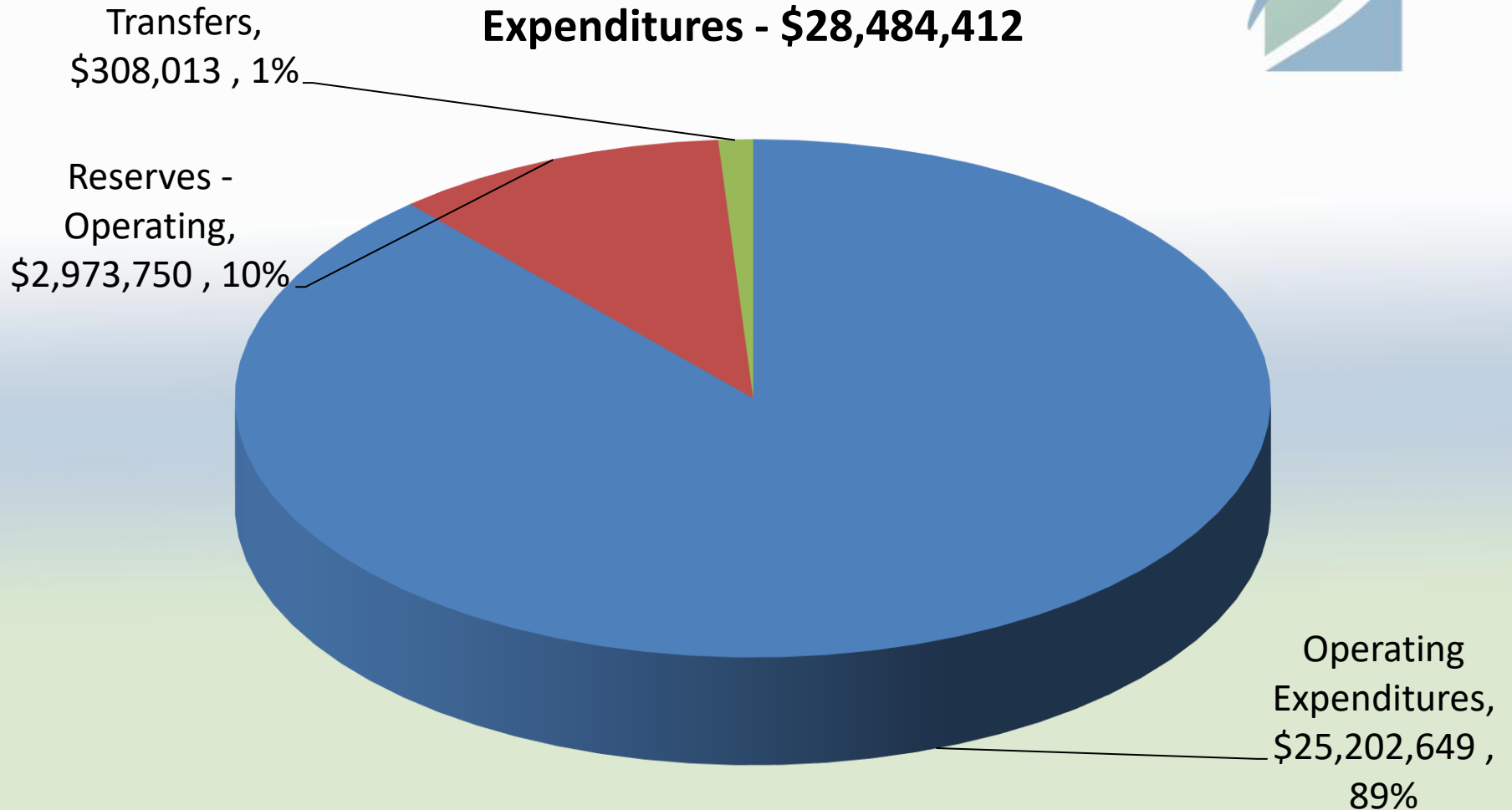
Revenues - \$28,484,412





Collection Budget

Expenditures - \$28,484,412



Collection Rebate Program



- Contact Solid Waste (321-633-2042 or www.brevardfl.gov) to place a complaint.
- Garbage, recycling, or containerized yard waste: If WM misses your collection day, contact Solid Waste the next business day. If before noon, WM has until 8pm that day to collect. If after noon, WM has until 5pm the next business day to collect.
- Clam truck yard waste, bulk pickups, repair/replace damaged cart: WM has 5 business days to pick up after requests are called in, remember to request a ticket number.
- Legitimate Complaints: If you contacted Solid Waste by phone, \$14.53 rebate. If you contacted through the website, \$19.53. Rebate up to cost of collection assessment.

Disposal (County-Wide)



- Paid through Non-Ad Valorem Solid Waste Disposal Assessment on annual tax bill. Additional funding from impact fees, gate charges, landfill gas sales, property lease, surplus sales.
- Funds Solid Waste Disposal Operations:
 - Central Disposal Facility (Class I & Class III waste, vegetative waste, household hazardous waste)
 - Sarno Road Landfill and Transfer Station (Class III waste, vegetative waste, household hazardous waste).
 - Titusville Transfer Station (Class I waste)
 - Mockingbird Mulching Facility (C&D, vegetative waste, household hazardous waste)
 - US192 Facility (under construction)
- Funds Solid Waste employee salaries
- Funds Capital Equipment Replacement
- Funds Capital Improvement Program for expansion of disposal system



Disposal Budget

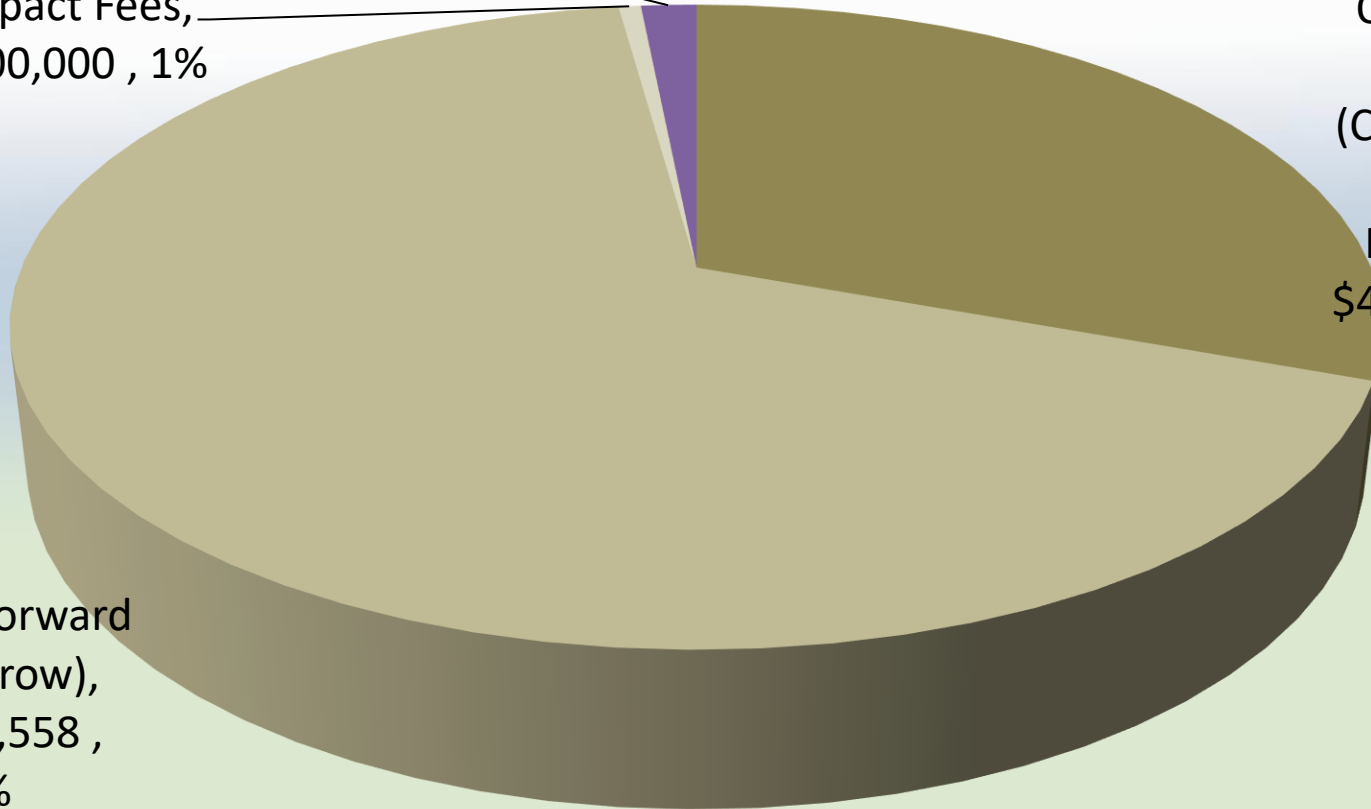
Revenues - \$138,926,708

Stat Reduction,
\$2,234,534 , 2%

Impact Fees,
\$900,000 , 1%

Operating
Revenue
(Charges for
Service,
Interest),
\$43,790,684
30%

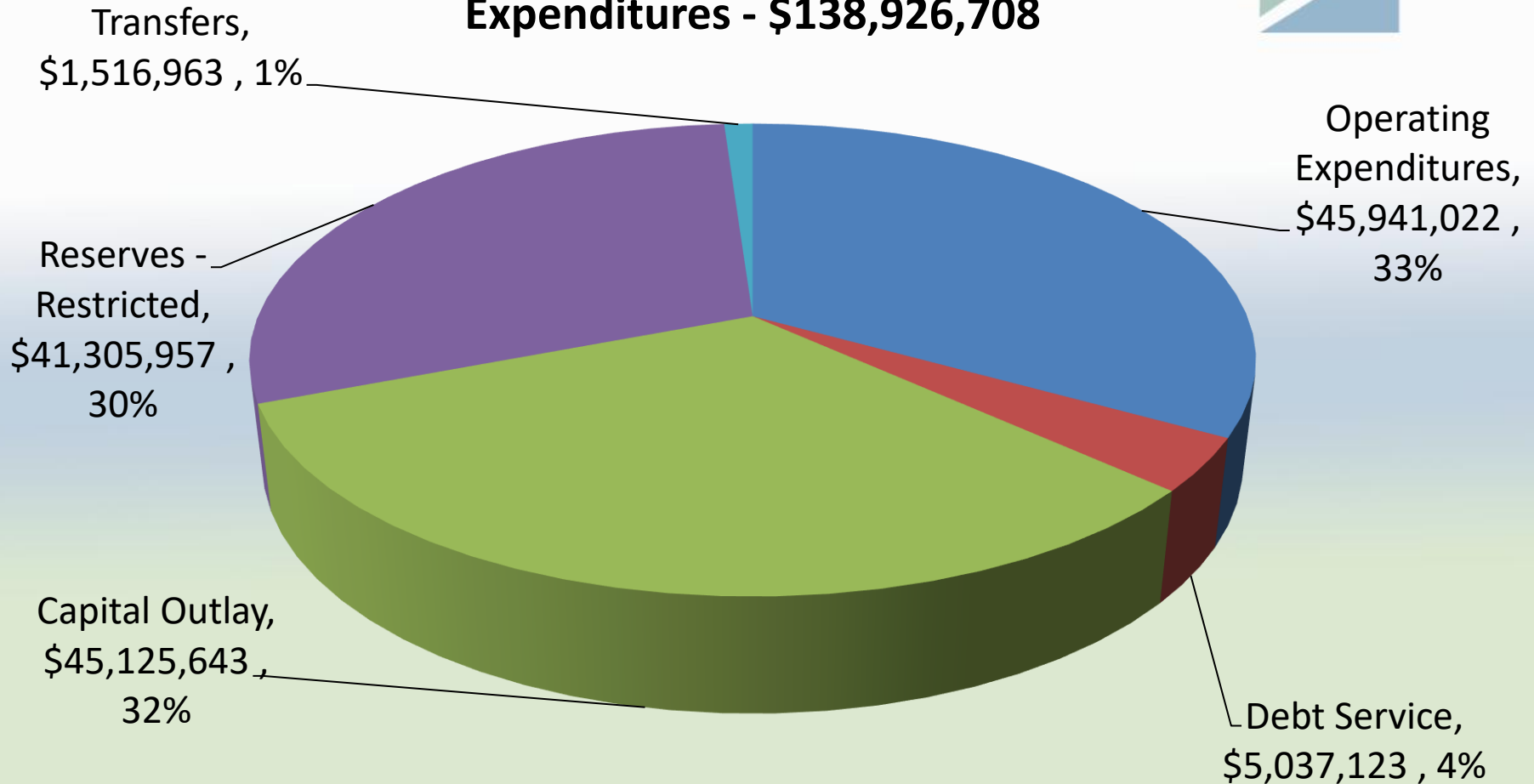
Balance Forward
(Incl Escrow),
\$96,470,558 ,
67%



Disposal Budget



Expenditures - \$138,926,708



Prioritized Critical Infrastructure Needs



- **US192 Solid Waste Facility** is under construction
 - Phase 1 Earthwork, Phase 2 Scale-House, Class III Landfill Cell, Leachate Collection and Storage.
 - Sarno Class III landfill reaching capacity
 - Full buildout of 2,900-acre property
 - 201 acres of Class III capacity
 - 375 acres of Class I capacity (after CDF reaches capacity)
 - 125 acres for alternate waste processing (future consideration)

Prioritized Critical Infrastructure Needs



- **Titusville Transfer Station** replacement is under construction
 - Current transfer station is 48 years old
 - Obsolete and inefficient technology
 - Relies on mechanical compaction
 - Steel transfer trailers weigh more, hold less waste tonnage
 - Constant maintenance and repair, fabricating parts
 - No scale-house or flow control
 - Will combine Mockingbird Way and Transfer Station property
 - Will be able to accommodate commercial operations
 - More space for vegetative and other waste

Prioritized Critical Infrastructure Needs



- **CDF South Landfill Cells 3-5 construction** permit issued by FDEP, **Cell 3 construction** bid documents underway
 - CDF is the only Class I landfill in Brevard County
 - Cells 1 and 2 reach capacity in 2028
 - Closure of Sarno Landfill will increase waste coming to CDF by 20+% until US192 Facility is operating
 - Shipping of Class I waste out of County will significantly increase costs

Prioritized Critical Infrastructure Needs



- **Class I landfill gas collection system expansion in the CDF South Landfill (escrow)**
- **Final Closure of Sarno Landfill (escrow)**
- **Final Closure of CDF Slurry Wall Landfill (escrow)**





Marketing and Outreach Team

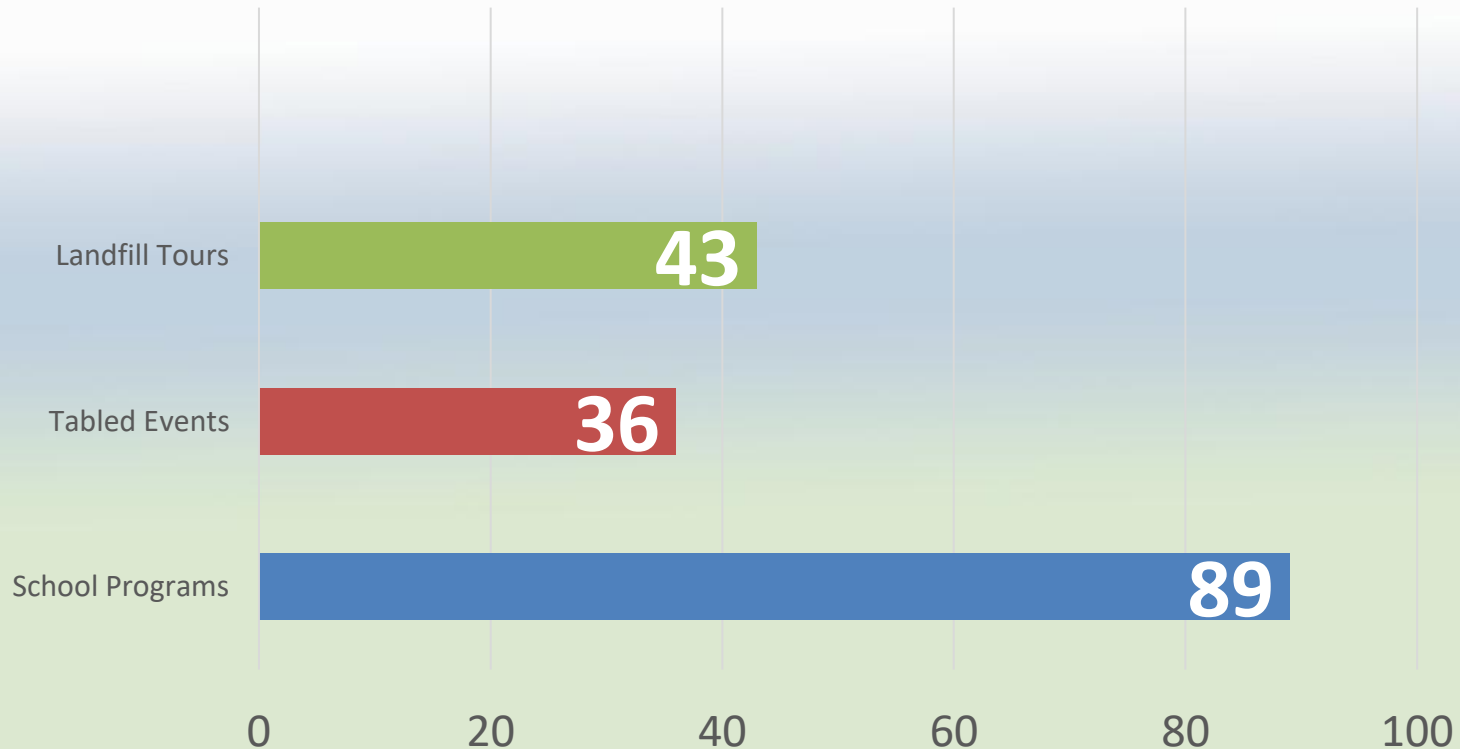
- Landfill Tours
- Tabled Events
- School Programs (BPS and Home School)
- STEM Promotion Organizations (SCSEA, KSC,PIE)
- Recycling Outreach
- General Solid Waste Marketing (Holiday schedule, pick-up guidelines, etc.)
- State Committees (RFT and SWANA)

Community Outreach 2025



9700+ Individuals Engaged Face to Face

Public Speaking and Engagement



FREE EVENT

COME & JOIN US FOR THE
**FLORIDA FRIENDLY
 LANDSCAPING
 SEMINAR**

SAVE THE DATE

**SATURDAY, MARCH 21, 2026
 MELBOURNE AUDITORIUM
 9 A.M. TO 2 P.M.**

THINGS TO DO

PROFESSIONAL PRESENTATIONS
 VENDORS
 PLANT SALE
 FREE COFFEE
 FOOD FOR PURCHASE
 DOOR PRIZES & SWAG BAGS TO
 THE FIRST 400 GUESTS

Scan to Register

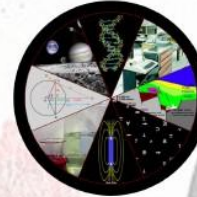


For more information:
 CALL UF/IFAS: 321-633-1702 X52315



Brevard County "Research Rules"

A science conference for students in grades 4-8, their teachers, and parents. Learn lots of useful tips from subject matter experts including designing a winning project!



Saturday, September 28, 2024

8:00 AM to 12:00 PM

**Brevard Public Schools
 District Building, Viera**

FREE!!

Register at: www.spacecoastscience.org

This event is sponsored by the Space Coast Science Education Alliance

Space at this free event is limited! Only students actively participating should attend. Limited to one adult per child.

Questions? Contact

spacecoastscience@gmail.com

These materials are neither sponsored by nor endorsed by the District, its agents, or its employees. The views and information contained in the material are not the expression of the opinion, belief, or policy of the Board, the District, and of this school.

Marketing and Social Media



- So far, the campaign has delivered 562,485 total impressions, an increase of 463,721 since the last report
- 2.14% click-through rate (CTR), meaning about 2 out of every 100 people who see the ad click on it
- 93.4% completion rate, meaning over 93% of viewers are watching the ads in full. It's a good thing we kept them short and sweet! The CTV ads are performing the best, at nearly 99% completion.



All Brevard County Household Hazardous Waste locations have resumed accepting spent fuel.

IMPORTANT NOTICE

Li+ **Proper Disposal Methods for Lithium-Ion Batteries**



- Take them to a collection site
- Use a voluntary collection program
- Cover the contacts



HOLIDAY SERVICE ALERTS

To view your WM holiday collection service schedule, please visit www.WMFloridaHoliday.com



PUT IT OUT

CALL IT IN



YARD WASTE GUIDELINES



Communication with WM

- Following recycling market trends
- Acceptable items for recycling
- Monitoring issues and concerns at the WM MRF
- Conducting quarterly visits to MRF to maintain flow of communication

Curbside Recycling



The Single Stream Revolution?: Advantages

- Reduced sorting efforts should increase the total volume collected
- Cost of collection reduced because they could use single compartment trucks
- Collection could be automated so less workers on the truck
- Route times ran quicker due to automation
- Worker injuries were reduced greatly
- This also increased the types of recyclables that could be collected

Acceptable Items



So, what does the local MRF accept?



- Plastic bottles, jugs and tubs (Shape not #)
- Metal cans
- Glass bottles and jars
- Cooking spray cans (empty)
- Cardboard boxes, tubes and drink cartons
- Paper (sheets)
- Folders (paper)
- Junk mail
- Magazines
- Paper wrapping
- Paper and cardboard packing materials (no plastic)
- *Pizza Boxes*



What is Contamination?



What is
contamination?

REJECTED

- Simply put, anything that is put in your curbside bin that doesn't belong there
- Bagged recyclables
- Plastic bags
- Liquid or food-soaked items
- Anything that would tangle around machinery
- Items that are too small to sort and bale (fist size)
- Food waste
- Glass other than bottles and jars
- Metal items other than steel or aluminum cans
- Yard waste
- Hazardous chemicals
- Clamshell containers
- Toys
- Planting pots
- Large items (storage bins, lawn furniture, lawn decorations)
- Mirrors and plate glass
- For more items refer to your local municipality's website
- Mixed Material Containers





Annual Solid Waste Management Report (DEP)



Brevard Ranked 14th out of 67 Counties in 2024 at a 53% Recycling Rate





Solid Waste Management Department



Thomas Mulligan, Director
Thomas.Mulligan@brevardfl.gov

Vicky Peña, Assistant Director
Vicky.Pena@brevardfl.gov

Kevin Smith, Recycling Coordinator
kevin.smith@brevardfl.gov



2725 Judge Fran Jamieson Way A-118
Viera, FL 32940
www.brevardfl.gov/SolidWaste/Home

Phone: (321) 633-2042