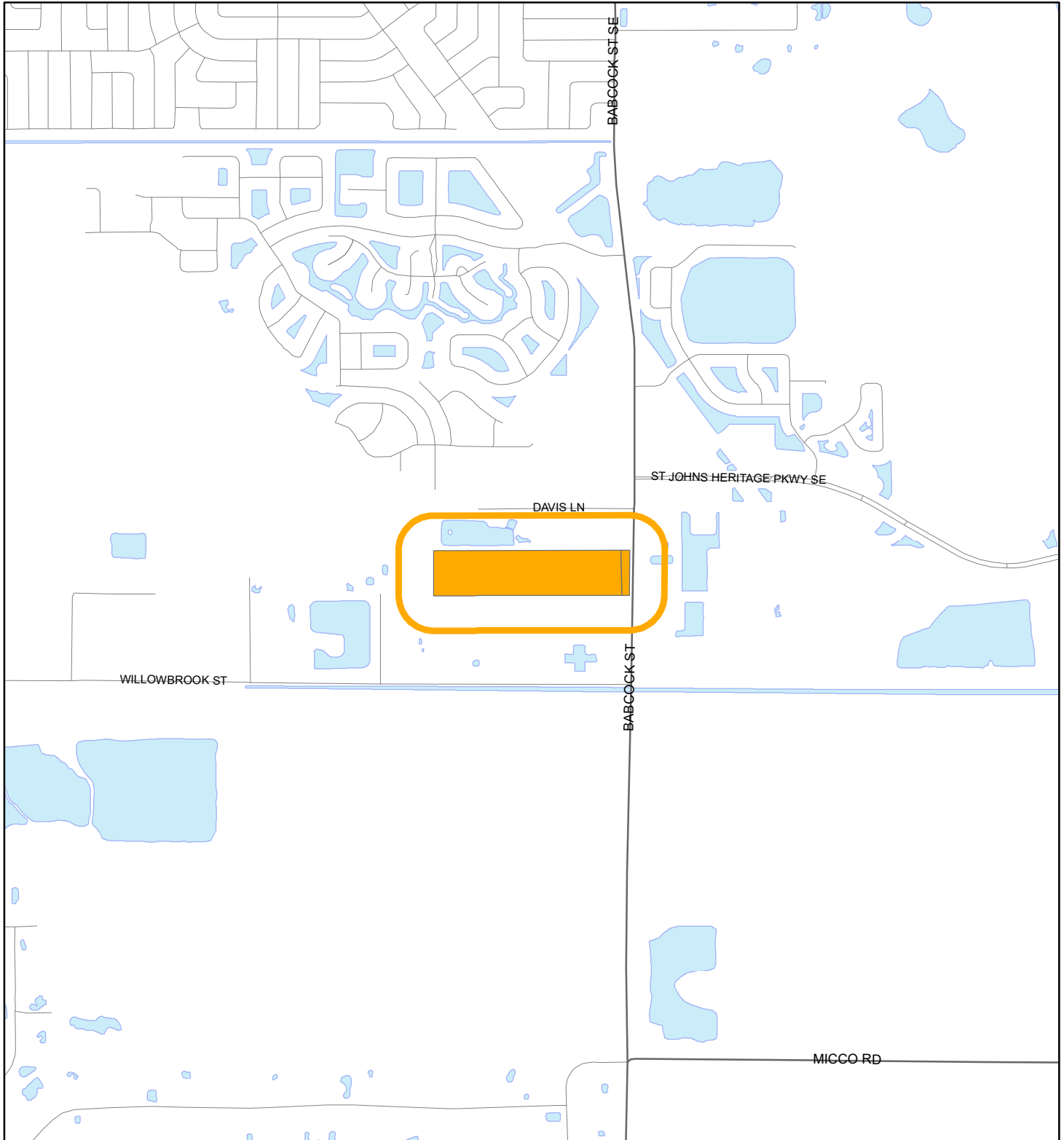


LOCATION MAP

JEN FLORIDA 48 LLC

23PUD00002



1:24,000 or 1 inch = 2,000 feet

Buffer Distance: 500 feet

This map was compiled from recorded documents and does not reflect an actual survey. The Brevard County Board of County Commissioners does not assume responsibility for errors or omissions hereon.

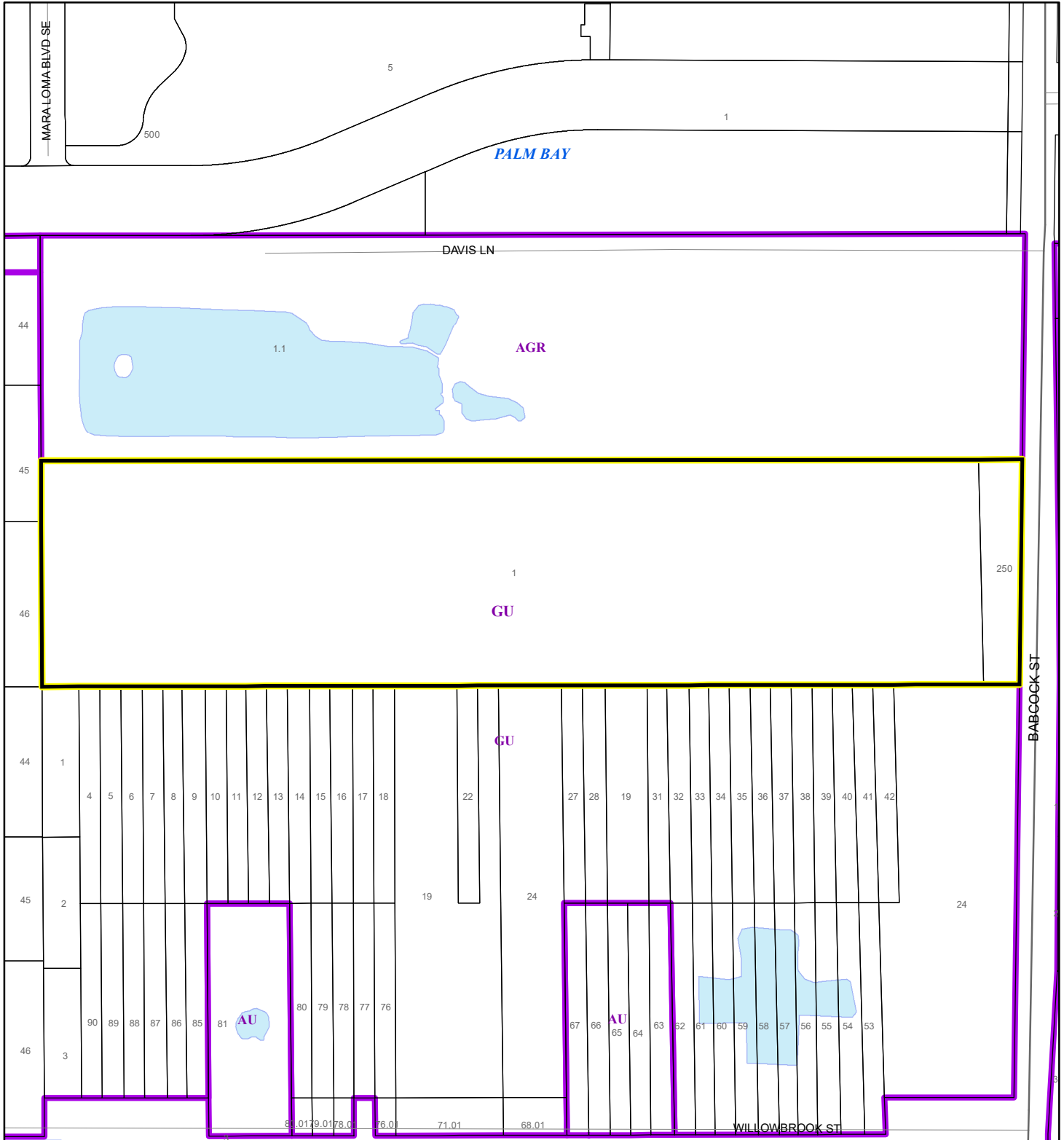
Produced by BoCC - GIS Date: 5/20/2024

Buffer
Subject Property

ZONING MAP

JEN FLORIDA 48 LLC


23PUD00002



1:4,800 or 1 inch = 400 feet

This map was compiled from recorded documents and does not reflect an actual survey. The Brevard County Board of County Commissioners does not assume responsibility for errors or omissions hereon.

Produced by BoCC - GIS Date: 5/20/2024

 Subject Property

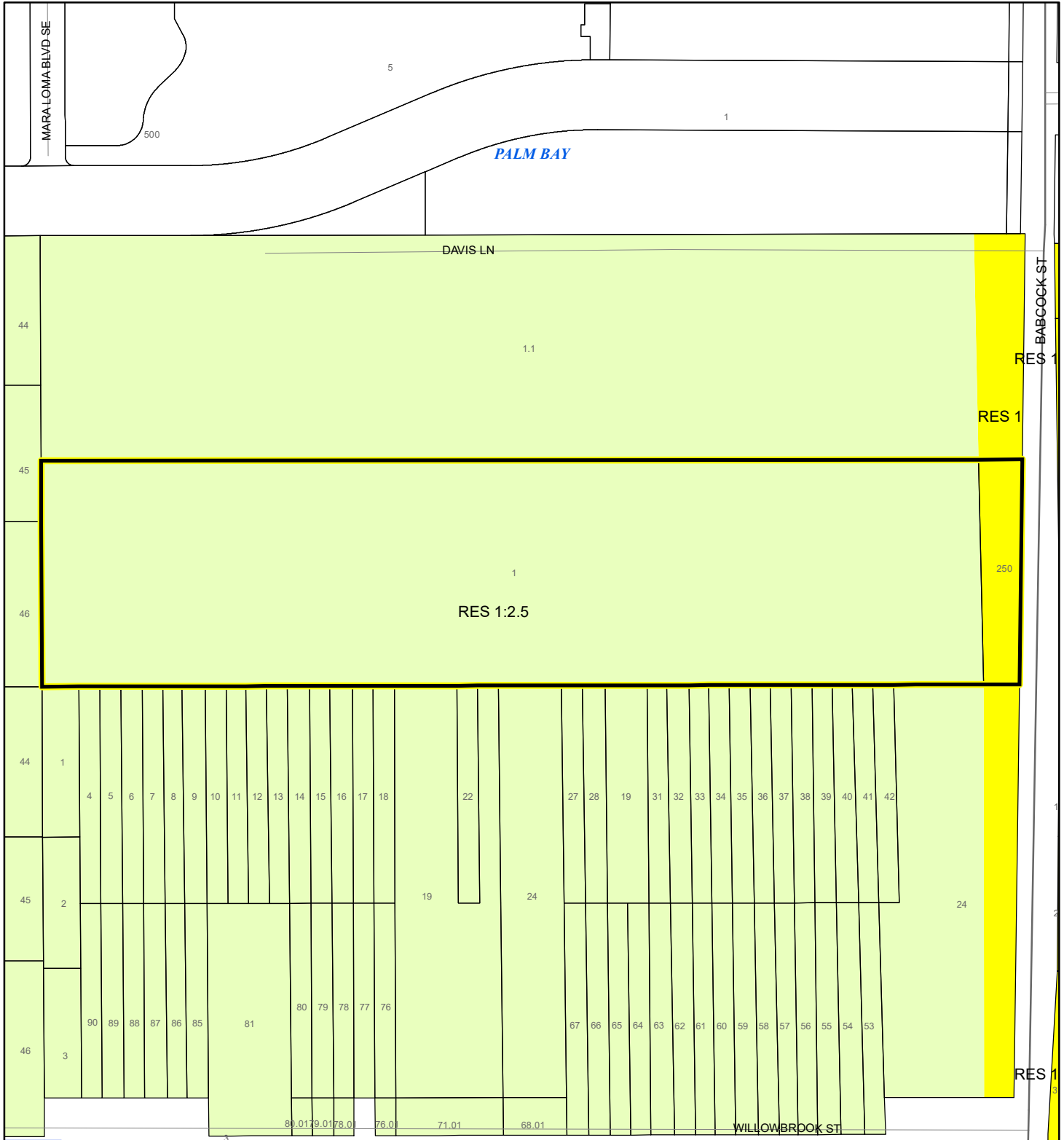
 Parcels

 Zoning

FUTURE LAND USE MAP

JEN FLORIDA 48 LLC

23PUD00002



1:4,800 or 1 inch = 400 feet

Subject Property
Parcels

This map was compiled from recorded documents and does not reflect an actual survey. The Brevard County Board of County Commissioners does not assume responsibility for errors or omissions hereon.

Produced by BoCC - GIS Date: 5/20/2024

AERIAL MAP

JEN FLORIDA 48 LLC

23PUD00002



1:4,800 or 1 inch = 400 feet

PHOTO YEAR: 2023

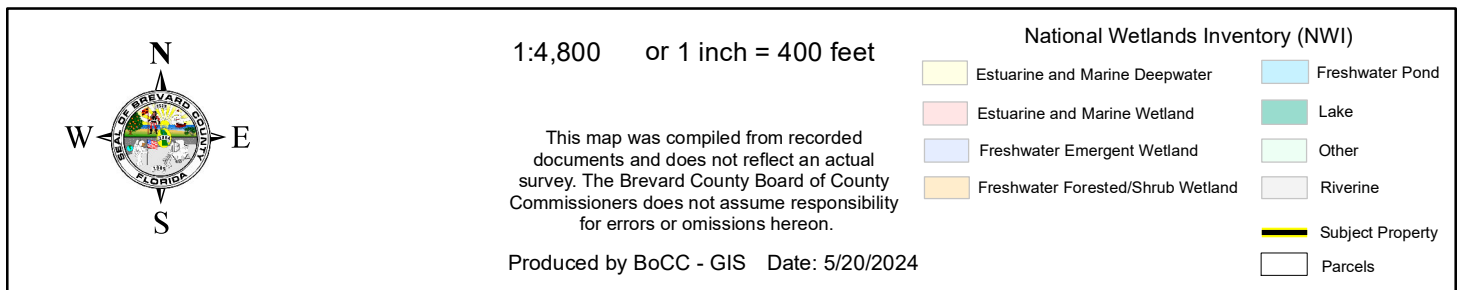
This map was compiled from recorded documents and does not reflect an actual survey. The Brevard County Board of County Commissioners does not assume responsibility for errors or omissions hereon.

Produced by BoCC - GIS Date: 5/20/2024

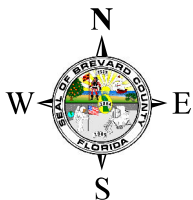
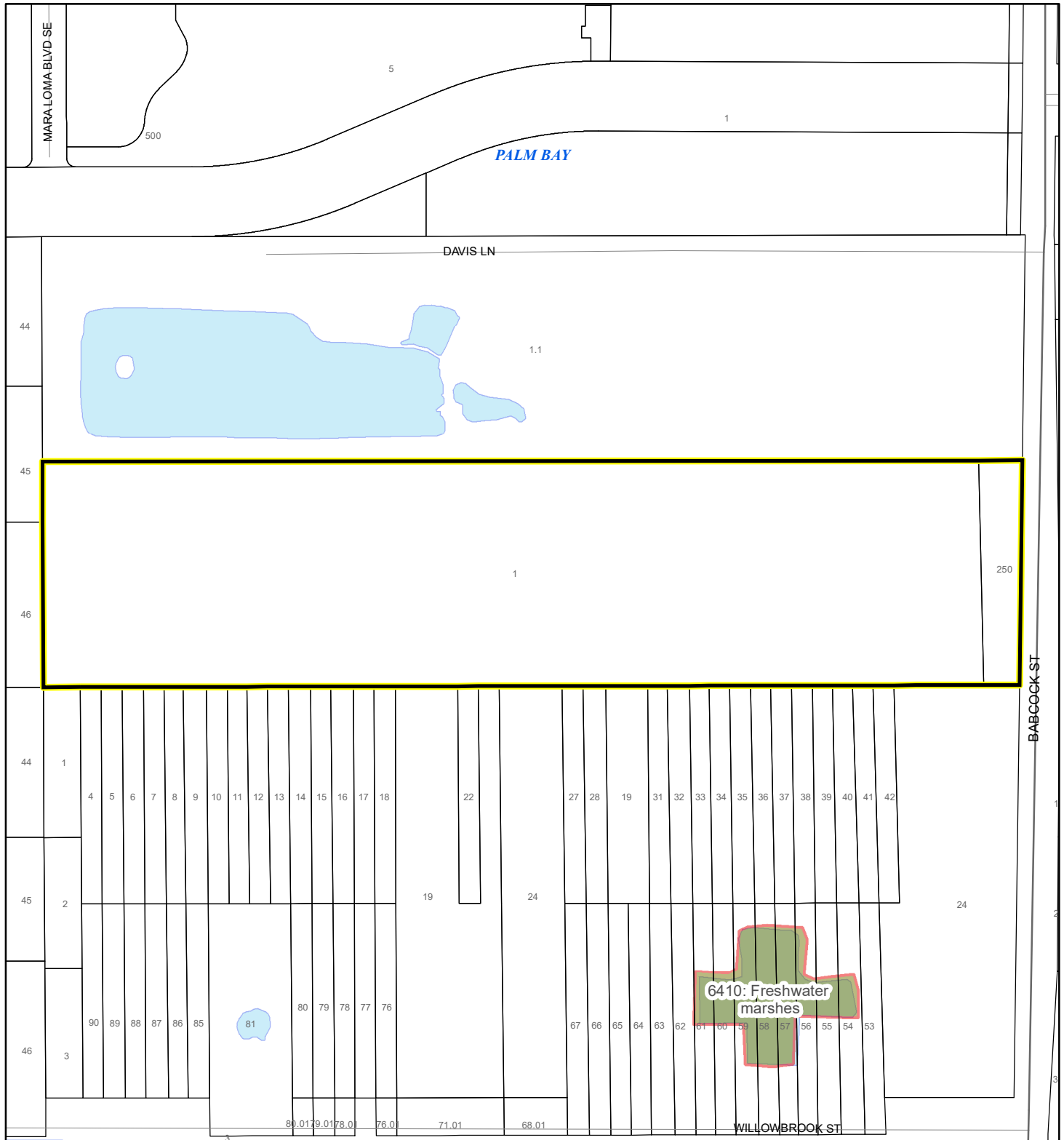
 Subject Property

 Parcels

JEN FLORIDA 48 LLC
23PUD00002



23PUD00002



1:4,800 or 1 inch = 400 feet

This map was compiled from recorded documents and does not reflect an actual survey. The Brevard County Board of County Commissioners does not assume responsibility for errors or omissions hereon.

Produced by BoCC - GIS Date: 5/20/2024

SJRWMD FLUCCS WETLANDS

-  Wetland Hardwood Forests - Series 6100
-  Wetland Coniferous Forest - Series 6200
-  Wetland Forested Mixed - Series 6300
-  Vegetated Non-Forested Wetlands - Series 6400
-  Non-Vegetated Wetland - Series 6500

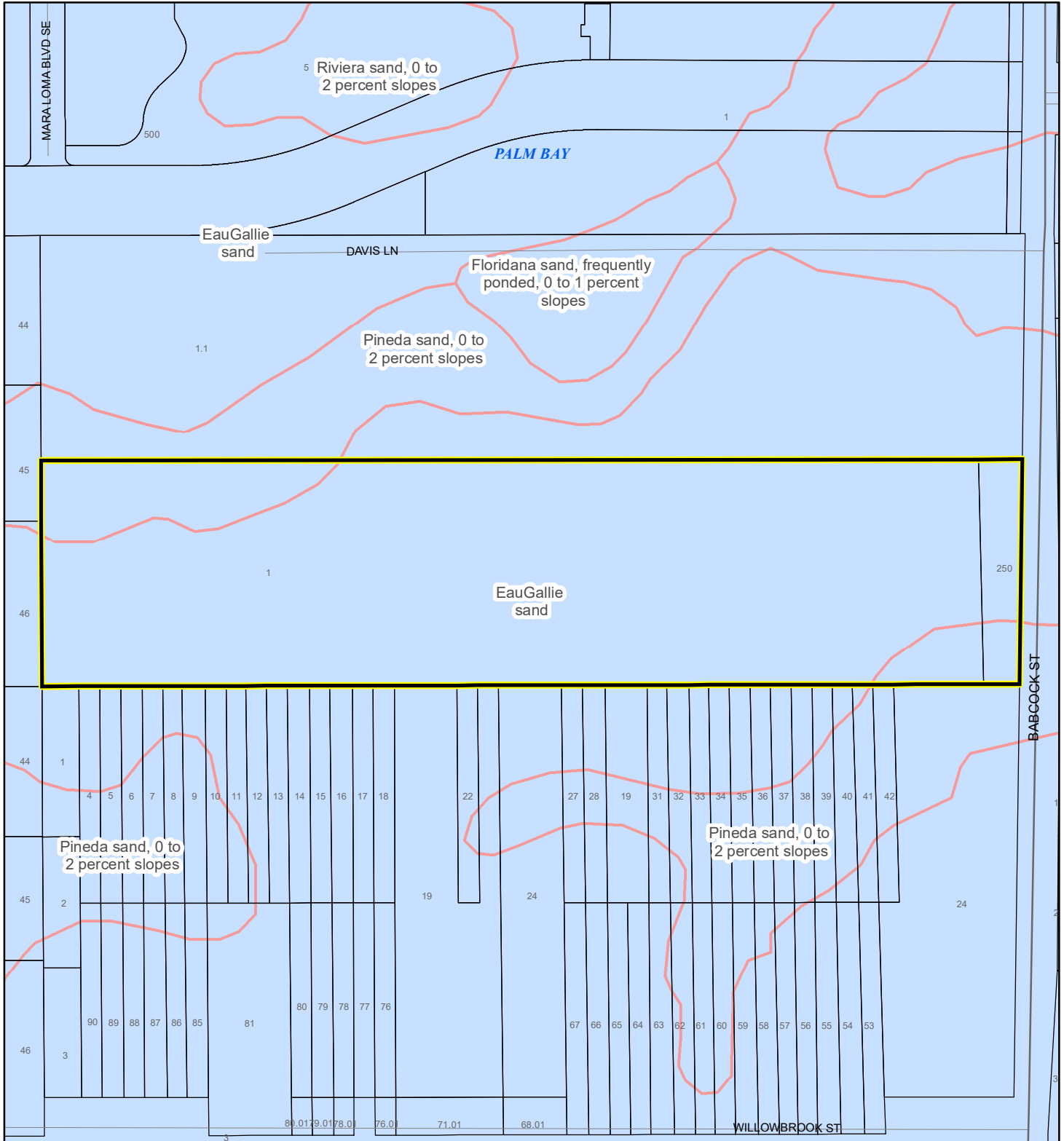
Subject Property

☐ Parcels

USDA SCSSS SOILS MAP

JEN FLORIDA 48 LLC

23PUD00002



1:4,800 or 1 inch = 400 feet

This map was compiled from recorded documents and does not reflect an actual survey. The Brevard County Board of County Commissioners does not assume responsibility for errors or omissions hereon.

Produced by BoCC - GIS Date: 5/20/2024

USDA SCSSS Soils

- Aquifer and Hydric
- Aquifer
- Hydric
- None

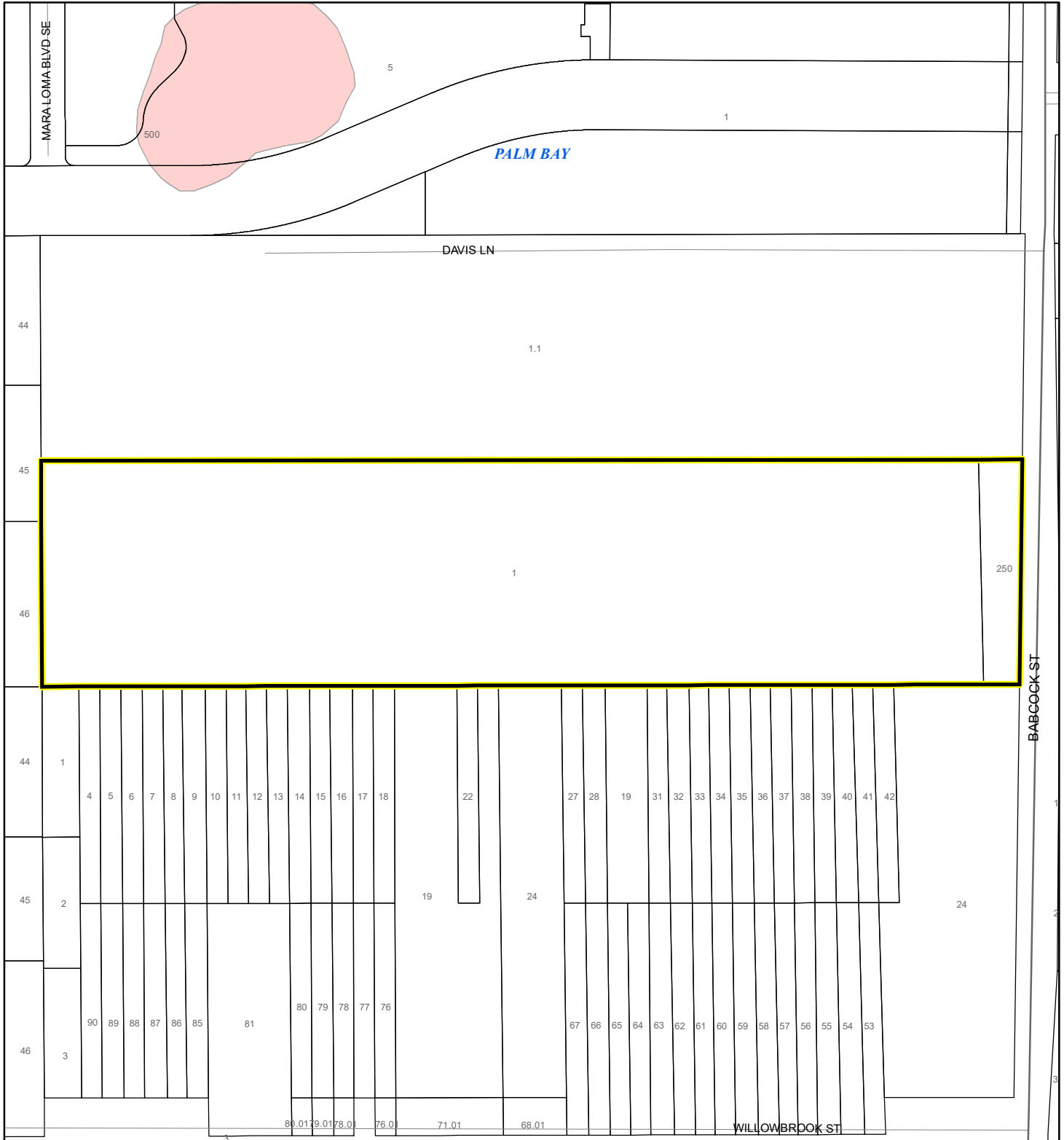
Subject Property

Parcels

FEMA FLOOD ZONES MAP

JEN FLORIDA 48 LLC

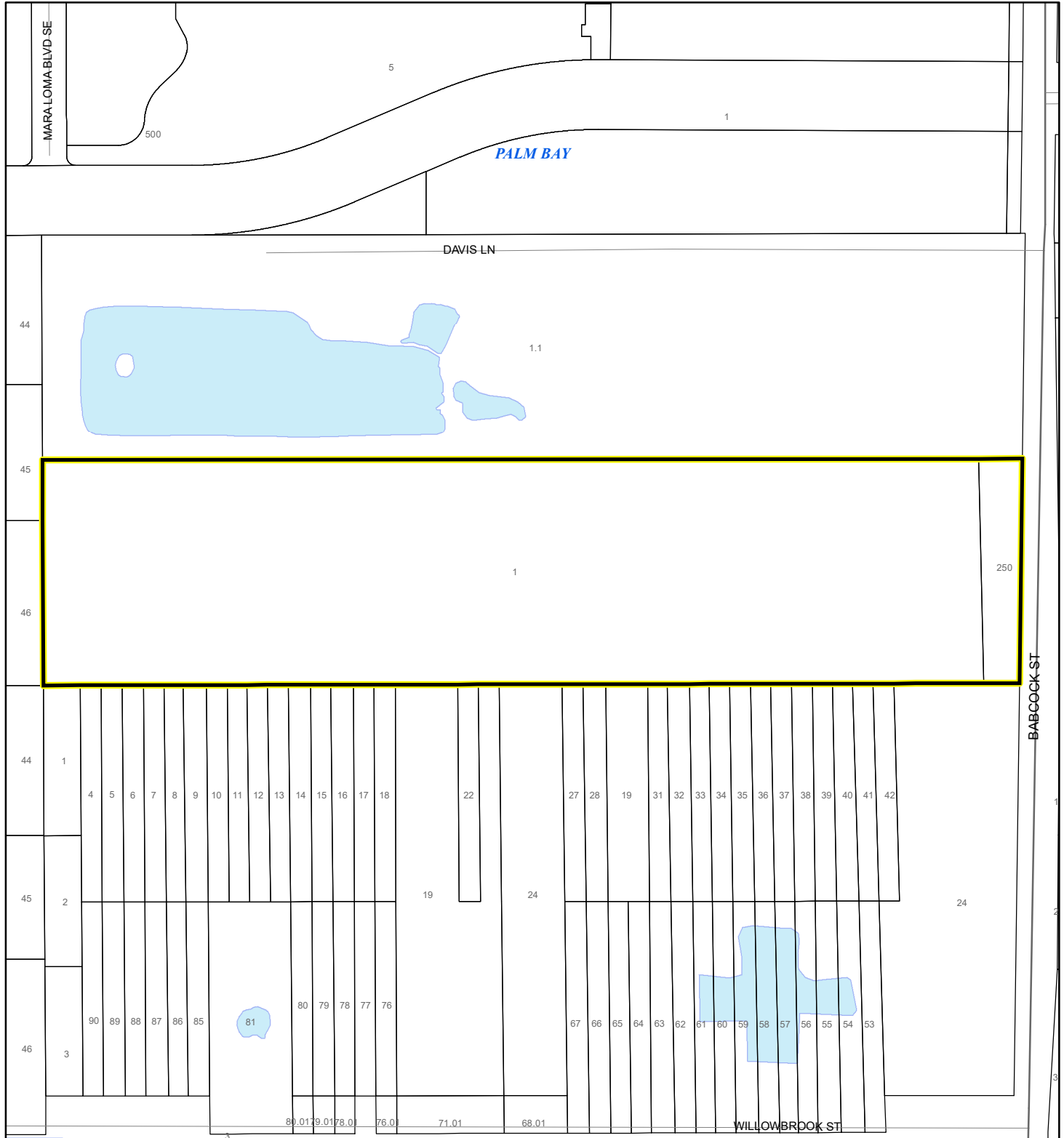
23PUD00002



COASTAL HIGH HAZARD AREA MAP

JEN FLORIDA 48 LLC

23PUD00002



1:4,800 or 1 inch = 400 feet

This map was compiled from recorded documents and does not reflect an actual survey. The Brevard County Board of County Commissioners does not assume responsibility for errors or omissions hereon.

Produced by BoCC - GIS Date: 5/20/2024

 Subject Property

 Parcels

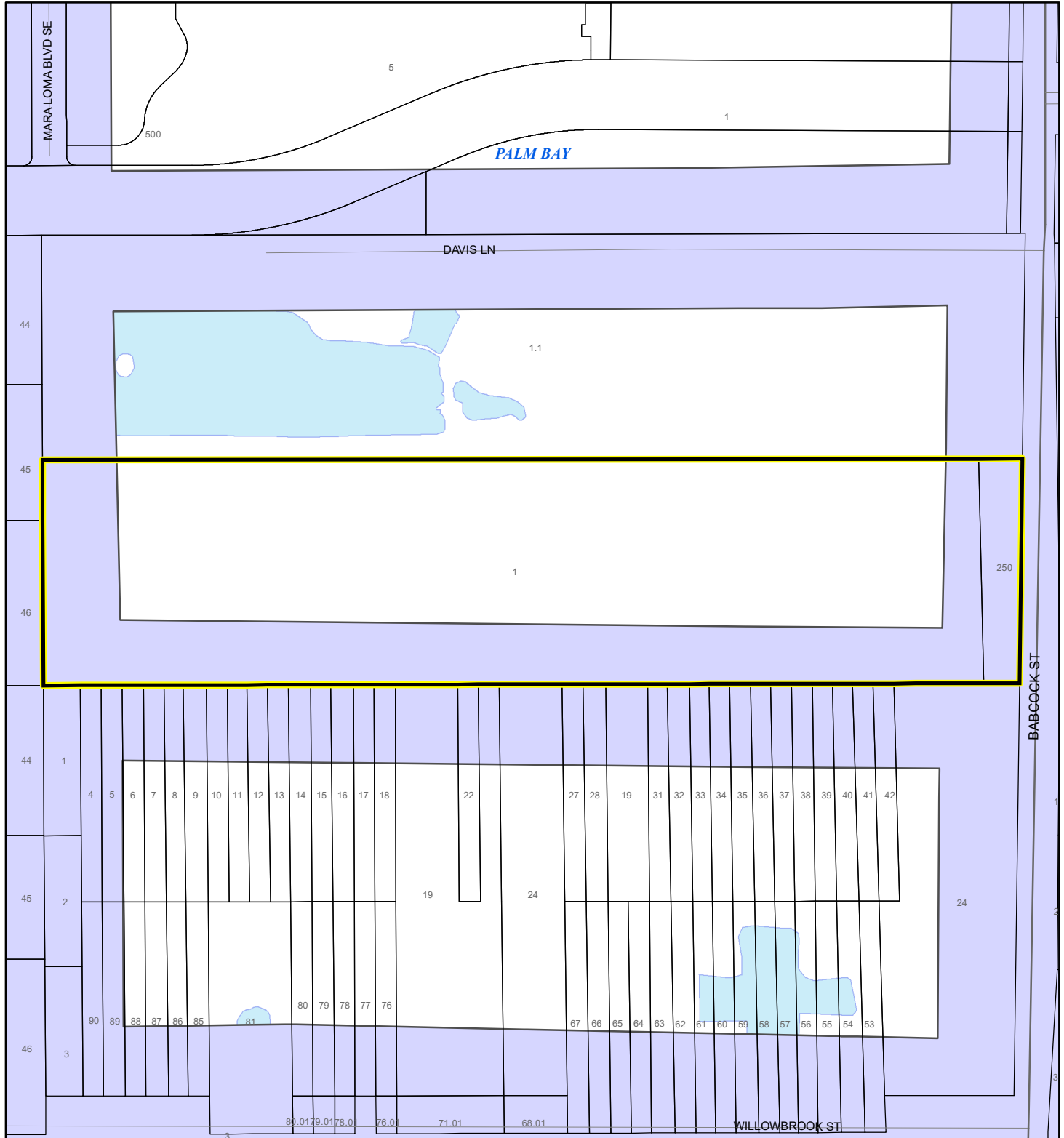
Coastal High Hazard Area

 SurgeZoneCat1

INDIAN RIVER LAGOON SEPTIC OVERLAY MAP

JEN FLORIDA 48 LLC

23PUD00002



1:4,800 or 1 inch = 400 feet

This map was compiled from recorded documents and does not reflect an actual survey. The Brevard County Board of County Commissioners does not assume responsibility for errors or omissions hereon.

Produced by BoCC - GIS Date: 5/20/2024

 Subject Property

 Parcels

Septic Overlay

 40 Meters

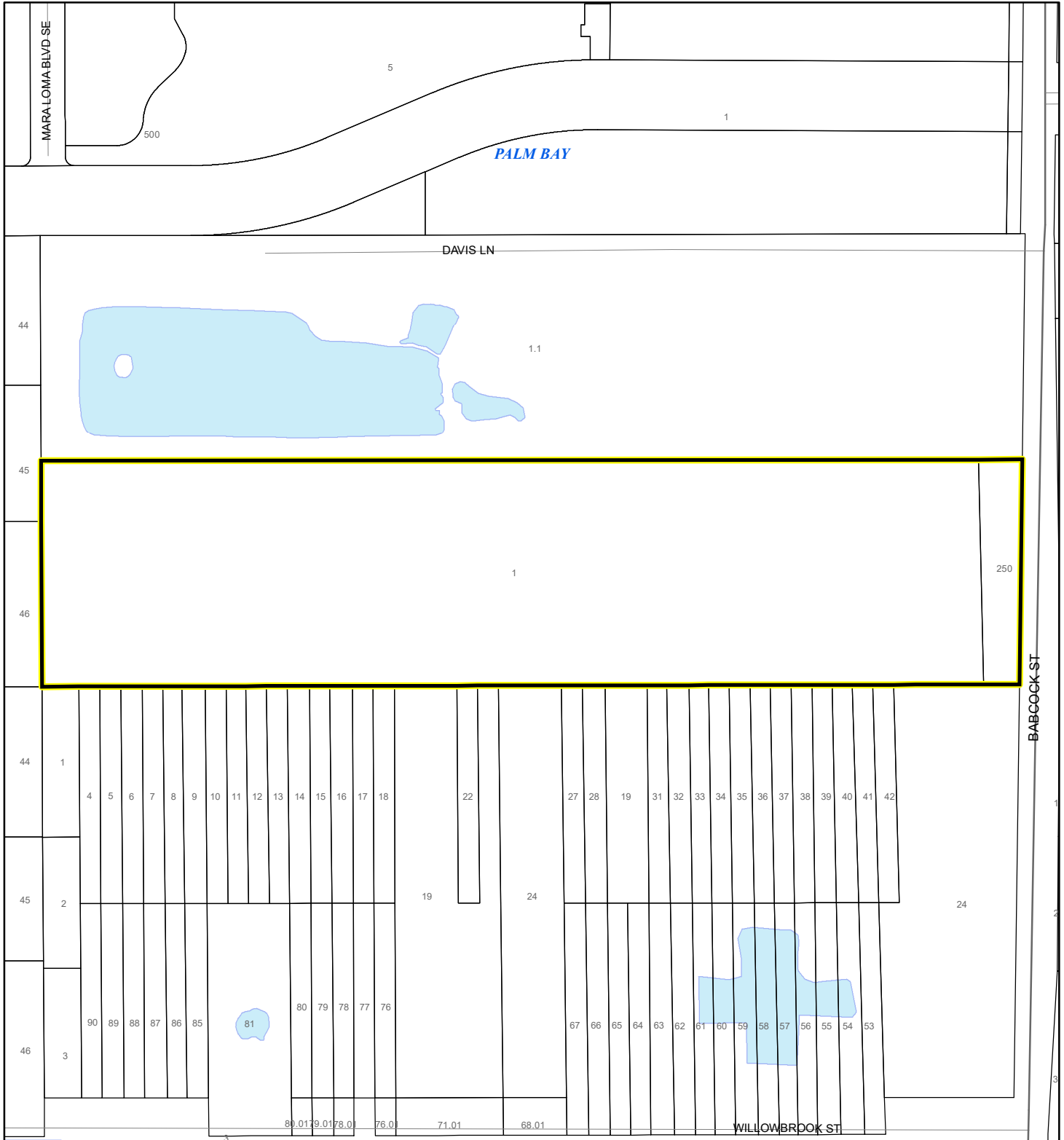
 60 Meters

 All Distances

EAGLE NESTS MAP

JEN FLORIDA 48 LLC

23PUD00002



1:4,800 or 1 inch = 400 feet

This map was compiled from recorded documents and does not reflect an actual survey. The Brevard County Board of County Commissioners does not assume responsibility for errors or omissions hereon.

Produced by BoCC - GIS Date: 5/20/2024

 Subject Property

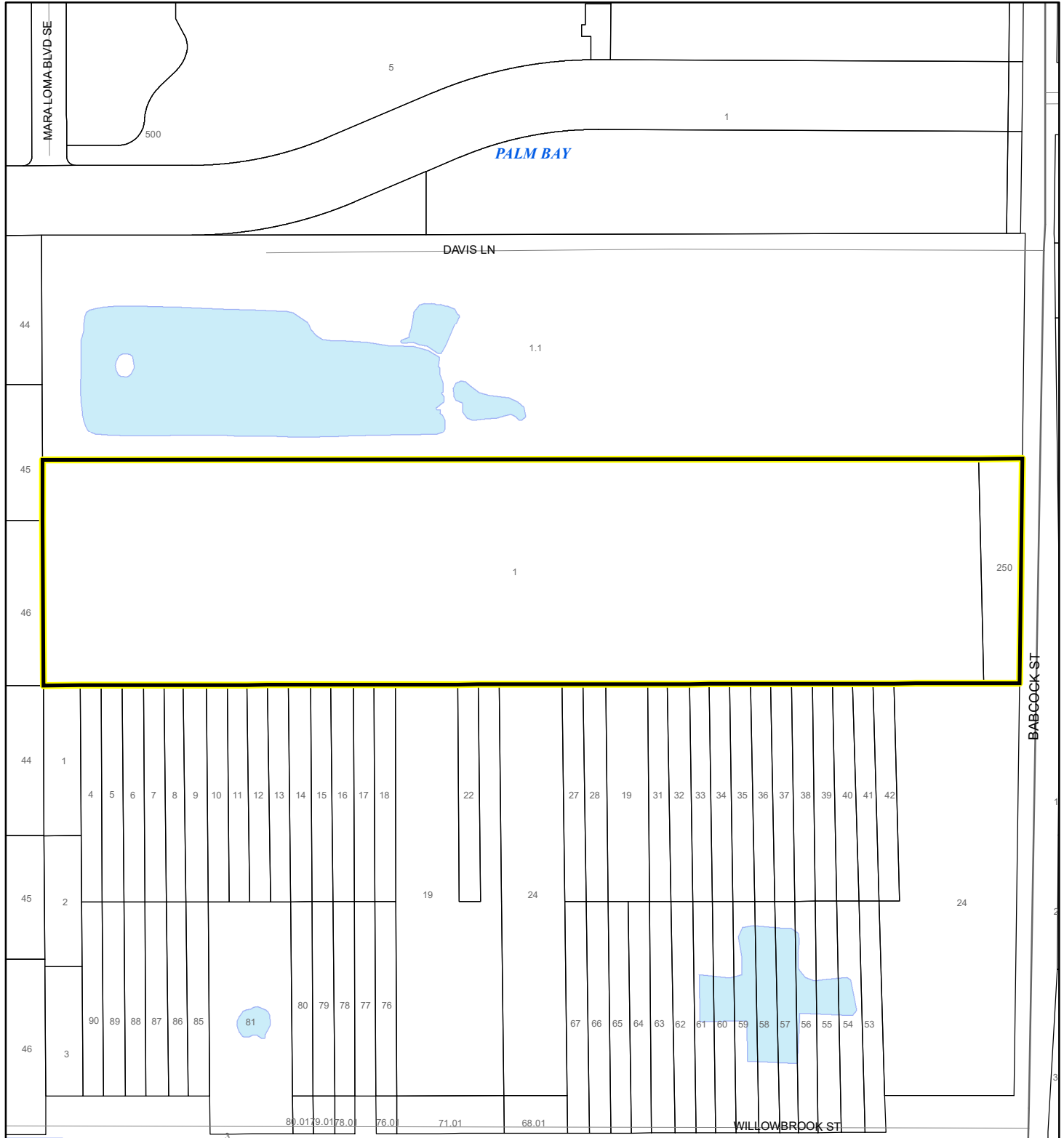
 Parcels

 Eagle Nests
FWS

SCRUB JAY OCCUPANCY MAP

JEN FLORIDA 48 LLC

23PUD00002



1:4,800 or 1 inch = 400 feet

This map was compiled from recorded documents and does not reflect an actual survey. The Brevard County Board of County Commissioners does not assume responsibility for errors or omissions hereon.

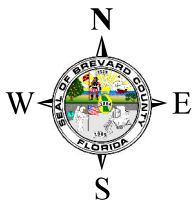
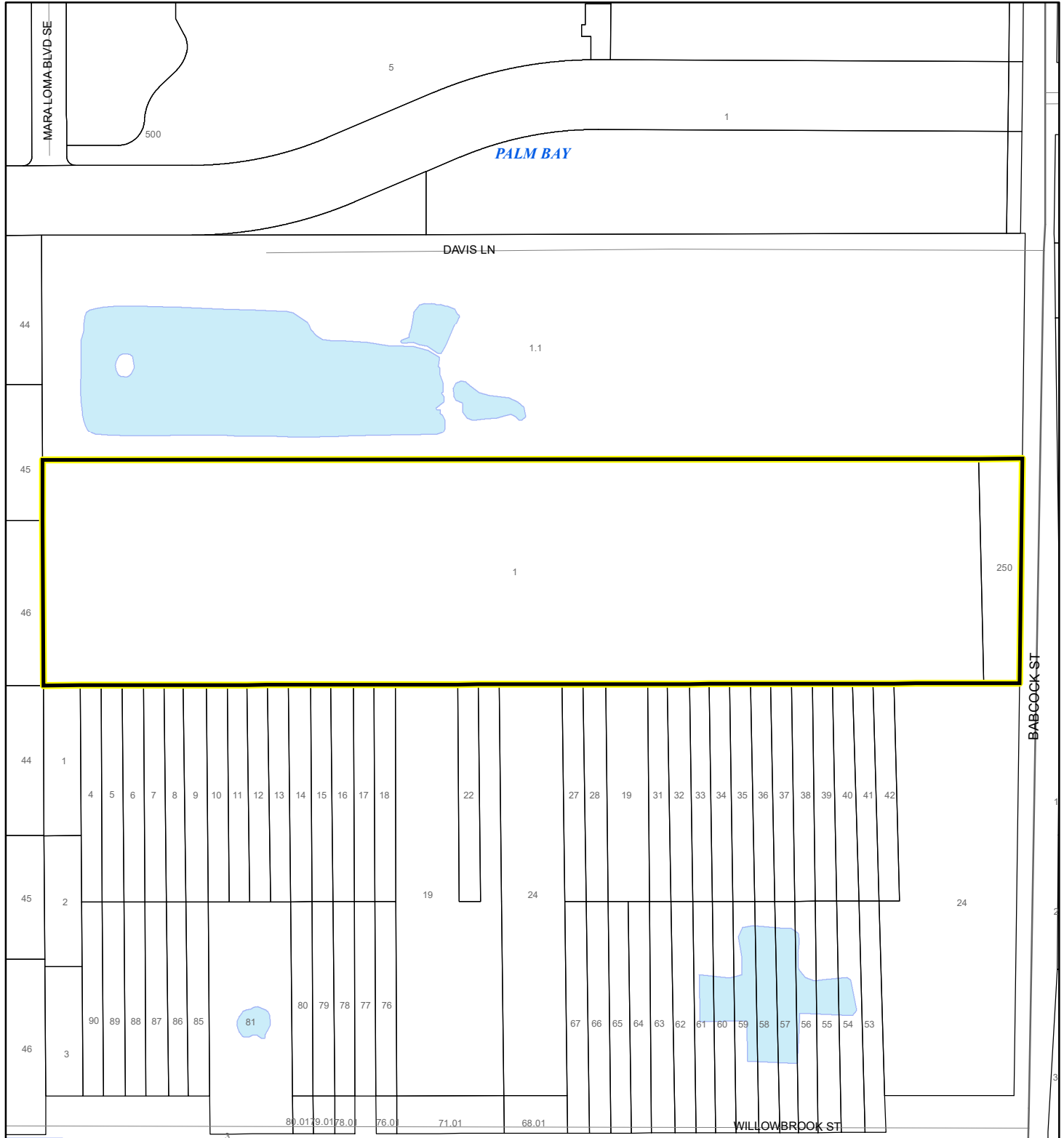
Produced by BoCC - GIS Date: 5/20/2024

- Subject Property
- Parcels
- Scrub Jay Occupancy

SJRWMD FLUCCS UPLAND FORESTS - 4000 Series MAP

JEN FLORIDA 48 LLC

23PUD00002

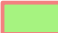





1:4,800 or 1 inch = 400 feet

This map was compiled from recorded documents and does not reflect an actual survey. The Brevard County Board of County Commissioners does not assume responsibility for errors or omissions hereon.

Produced by BoCC - GIS Date: 5/20/2024

SJRWMD FLUCCS Upland Forests

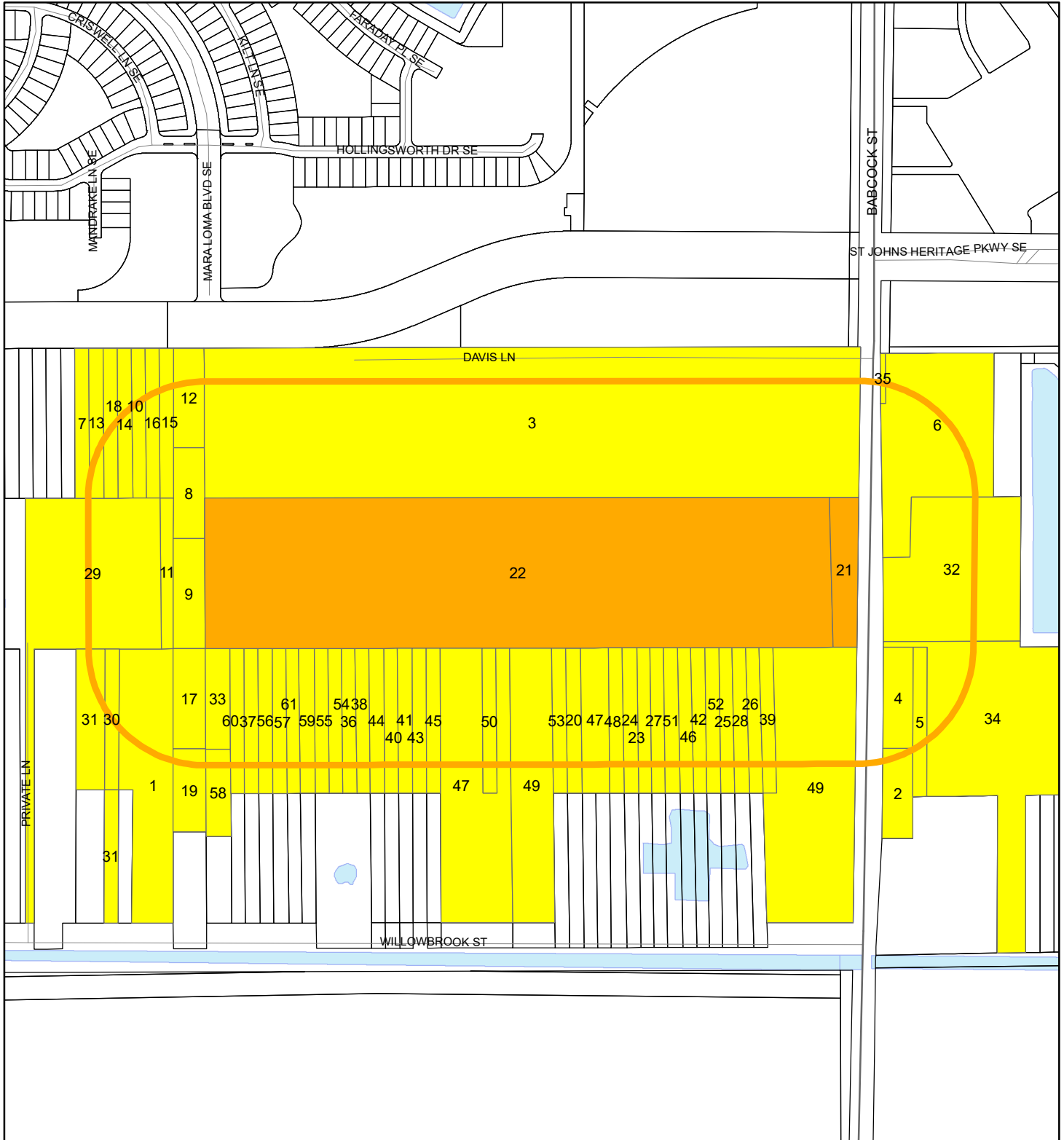
-  Upland Coniferous Forest - 4100 Series
-  Upland Hardwood Forest - 4200 Series
-  Upland Mixed Forest - 4300 Series
-  Tree Plantations - 4400 Series

 Subject Property  Parcels

RADIUS MAP

JEN FLORIDA 48 LLC

23PUD00002



1:7,200 or 1 inch = 600 feet

Buffer Distance: 500 feet

This map was compiled from recorded documents and does not reflect an actual survey. The Brevard County Board of County Commissioners does not assume responsibility for errors or omissions hereon.

Produced by BoCC - GIS Date: 5/20/2024

- Buffer
- Subject Property
- Notify Property
- Parcels