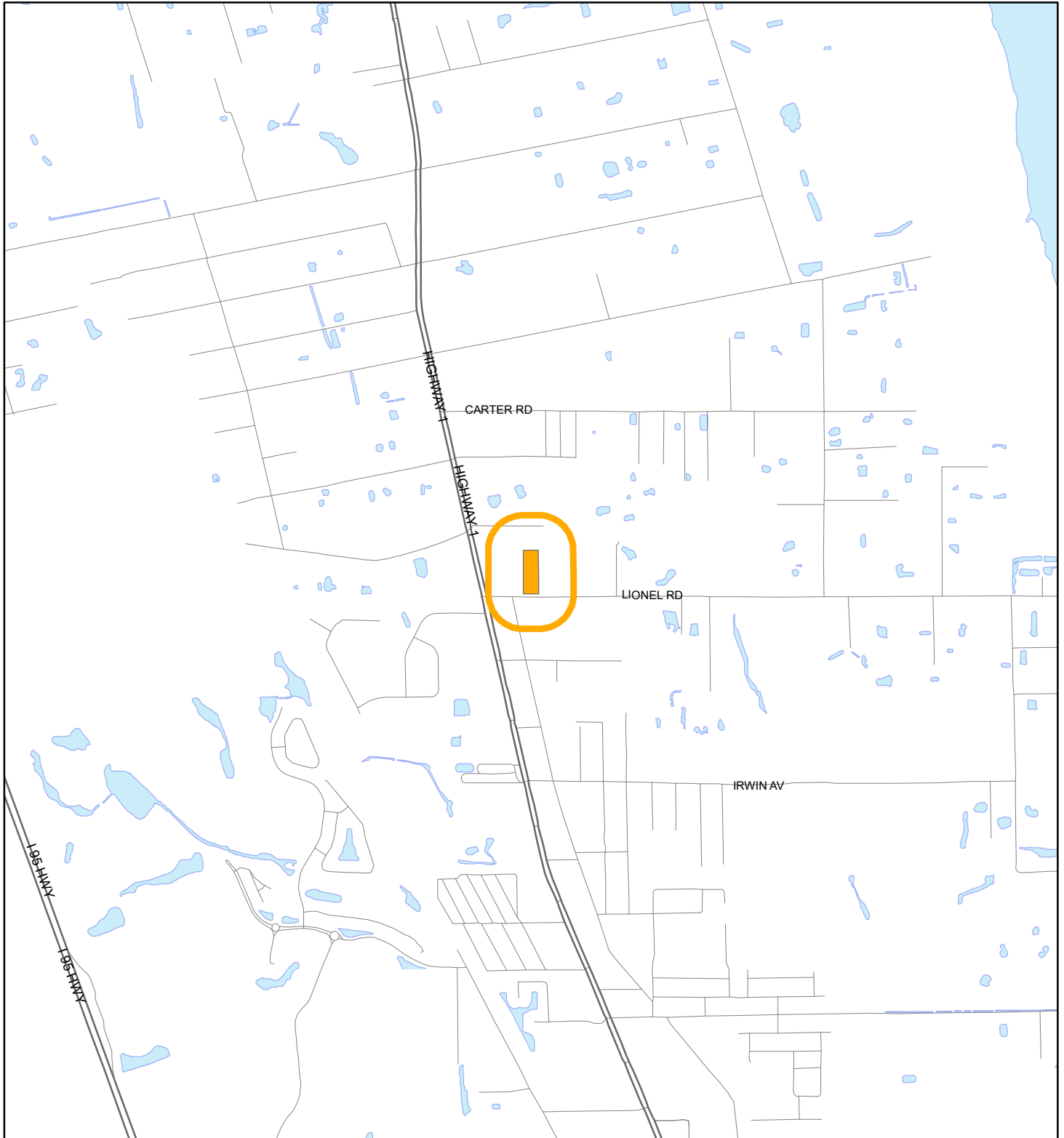


# LOCATION MAP

Gonedridge, William & Jeanette

24Z00003





1:24,000 or 1 inch = 2,000 feet

Buffer Distance: 500 feet

This map was compiled from recorded documents and does not reflect an actual survey. The Brevard County Board of County Commissioners does not assume responsibility for errors or omissions hereon.

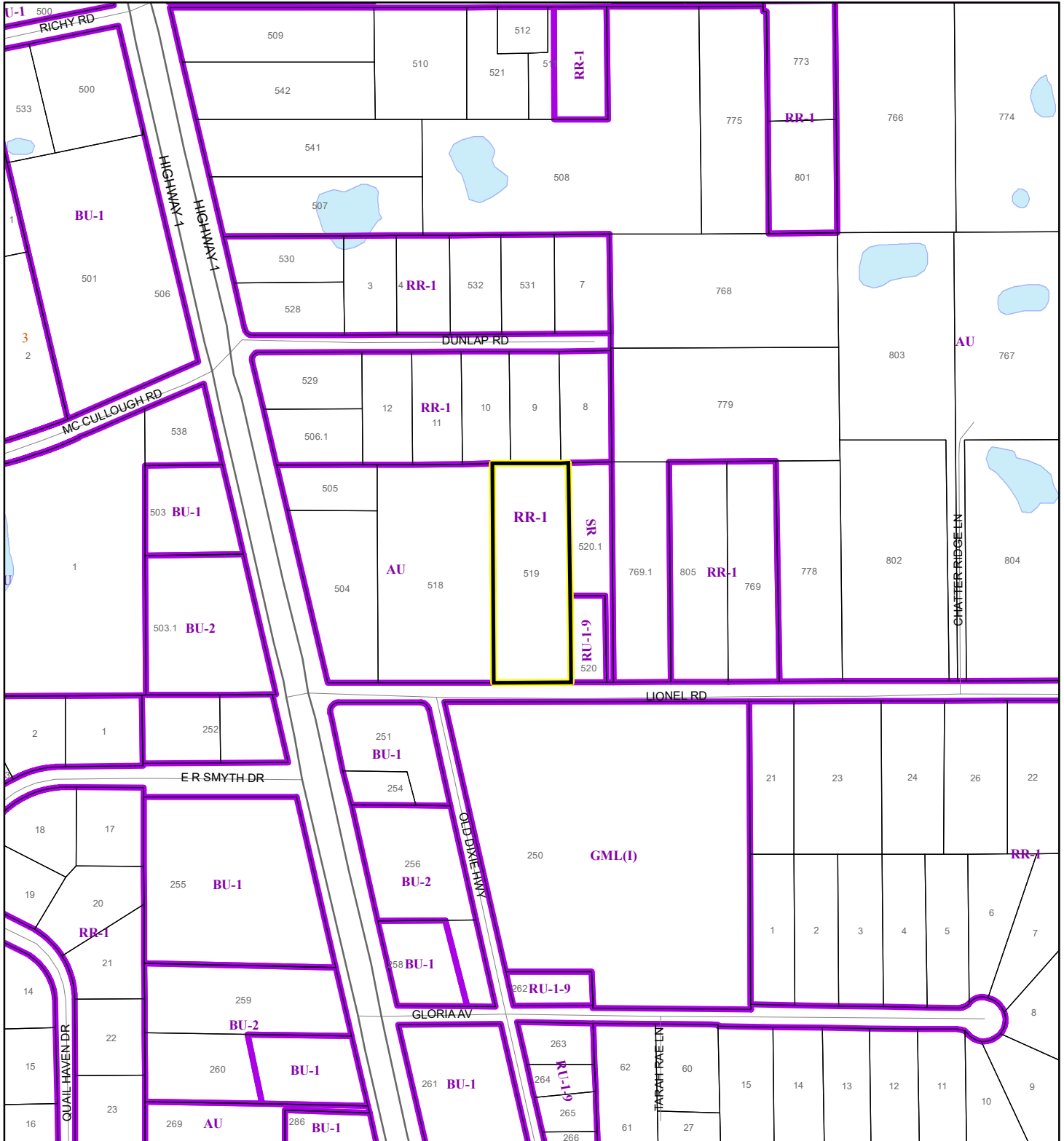
Produced by BoCC - GIS Date: 1/29/2024

 Buffer  
 Subject Property

# ZONING MAP

Gonedridge, William & Jeanette


24Z00003



1:4,800 or 1 inch = 400 feet

This map was compiled from recorded documents and does not reflect an actual survey. The Brevard County Board of County Commissioners does not assume responsibility for errors or omissions hereon.

Produced by BoCC - GIS Date: 1/29/2024

 Subject Property

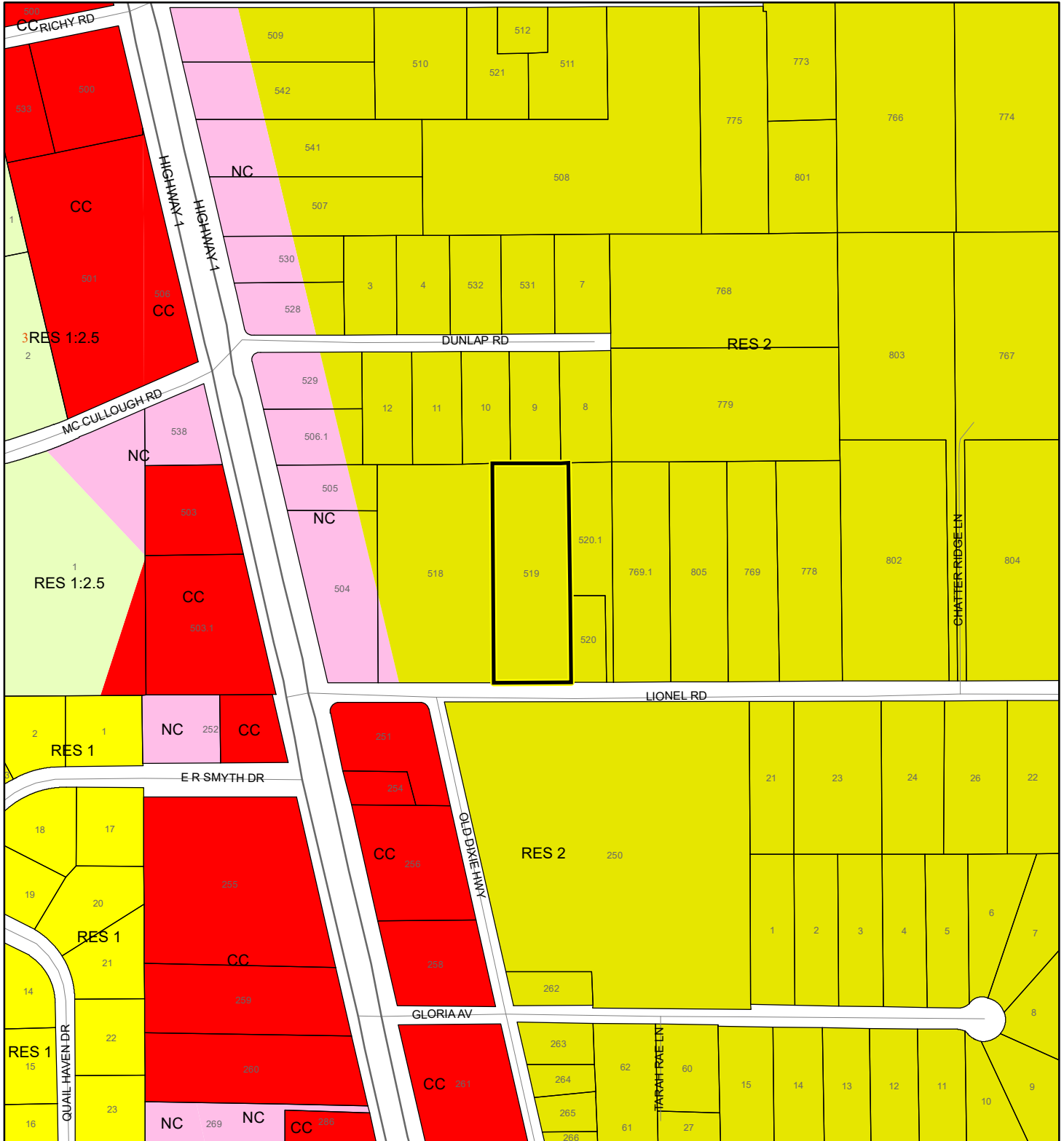
 Parcels

 Zoning

# FUTURE LAND USE MAP

Gonedridge, William & Jeanette

24Z00003



1:4,800 or 1 inch = 400 feet

**Subject Property**  
**Parcels**

This map was compiled from recorded documents and does not reflect an actual survey. The Brevard County Board of County Commissioners does not assume responsibility for errors or omissions hereon.

Produced by BoCC - GIS Date: 1/29/2024



# AERIAL MAP

Gonedridge, William & Jeanette  
24Z00003




1:2,400 or 1 inch = 200 feet

PHOTO YEAR: 2023

This map was compiled from recorded documents and does not reflect an actual survey. The Brevard County Board of County Commissioners does not assume responsibility for errors or omissions hereon.

Produced by BoCC - GIS Date: 1/29/2024

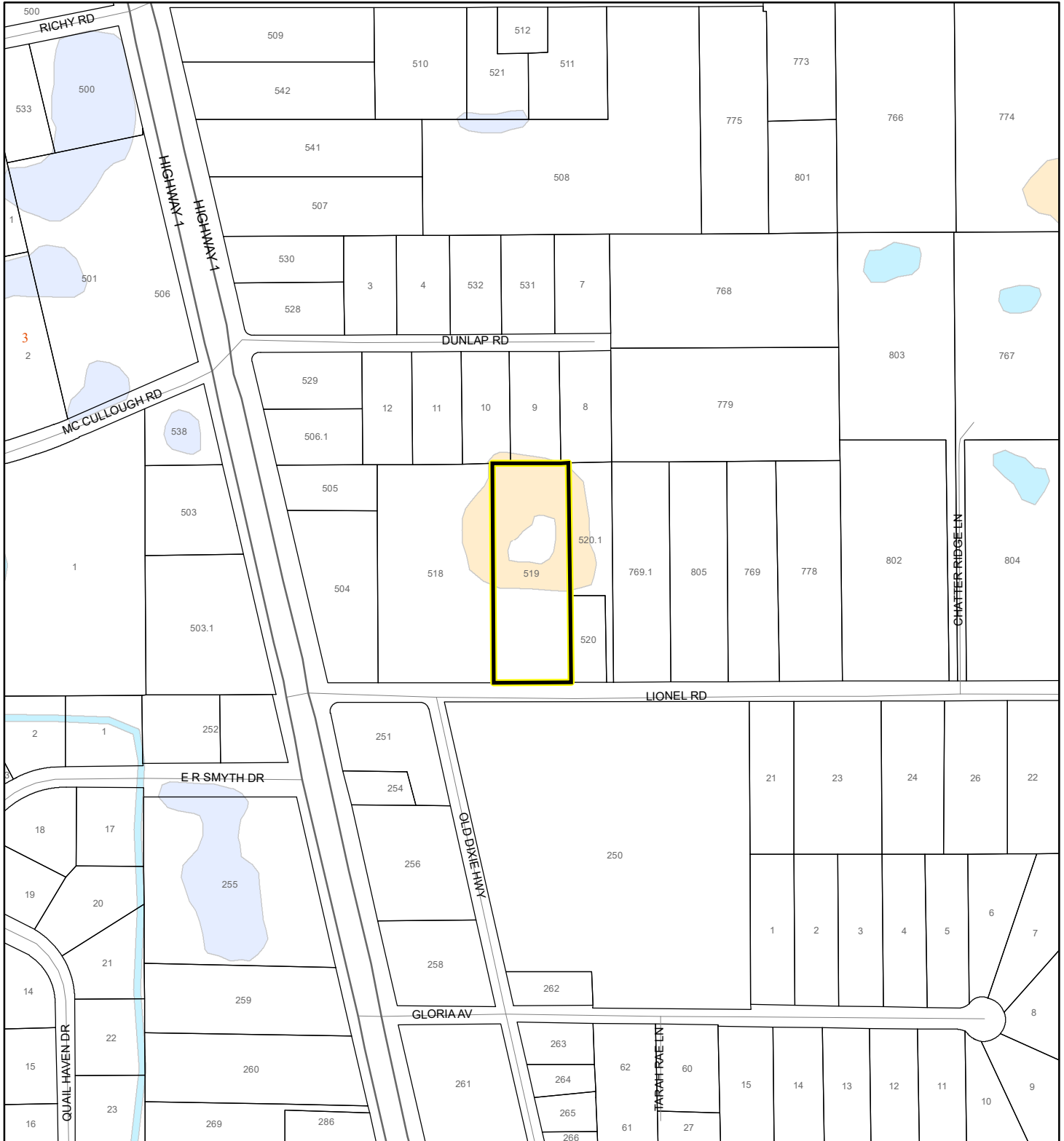
 Subject Property

 Parcels



# NWI WETLANDS MAP

Gonedridge, William & Jeanette  
24Z00003






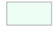

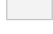

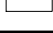


1:4,800 or 1 inch = 400 feet

This map was compiled from recorded documents and does not reflect an actual survey. The Brevard County Board of County Commissioners does not assume responsibility for errors or omissions hereon.

Produced by BoCC - GIS Date: 1/29/2024

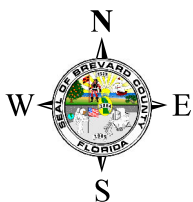
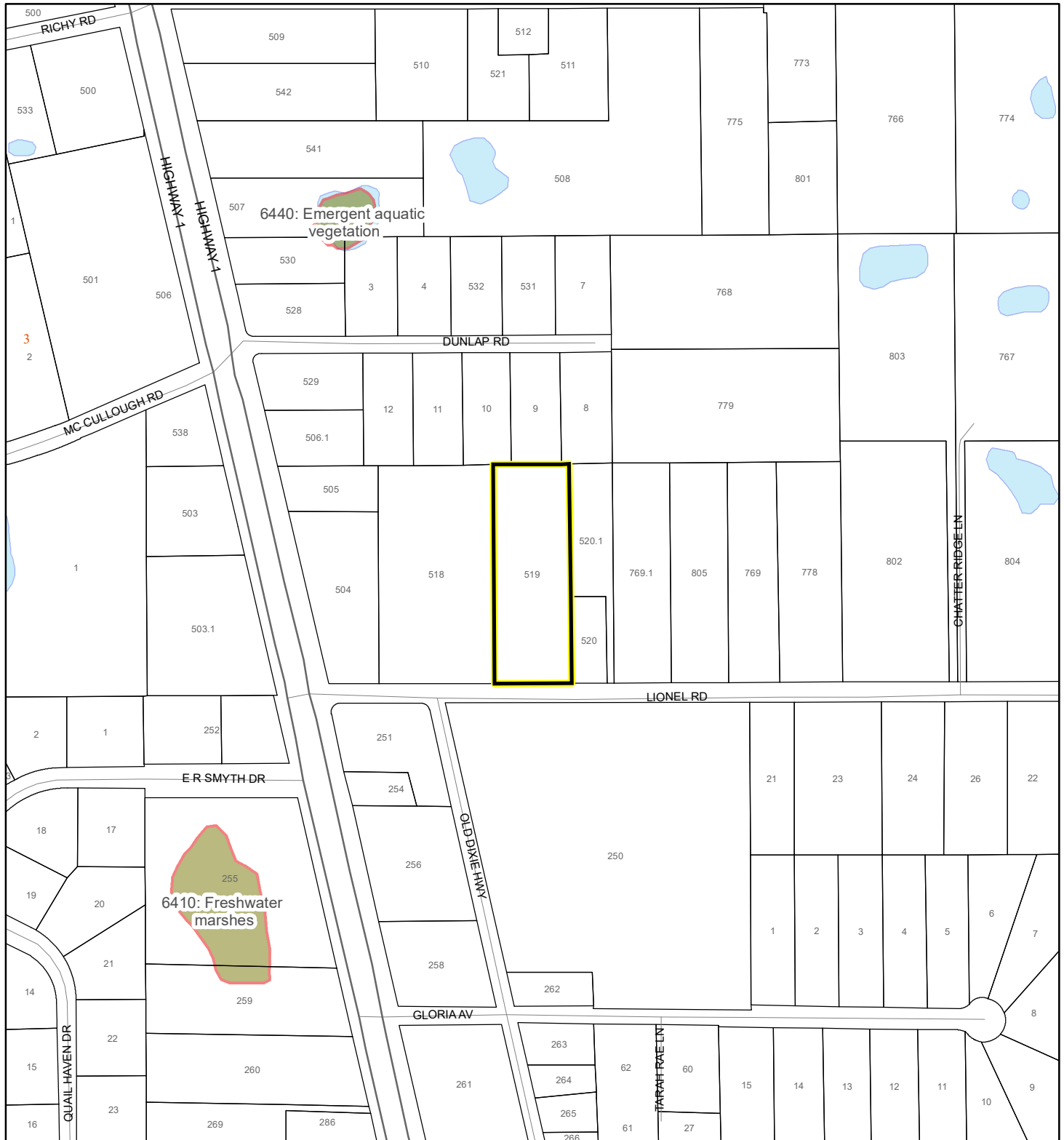
## National Wetlands Inventory (NWI)

|  |  |
|--|--|
|  Estuarine and Marine Deepwater    |  Freshwater Pond  |
|  Estuarine and Marine Wetland      |  Lake             |
|  Freshwater Emergent Wetland       |  Other            |
|  Freshwater Forested/Shrub Wetland |  Riverine         |
|  |  Subject Property |
|  |  Parcels          |

# SJRWMD FLUCCS WETLANDS - 6000 Series MAP

Gonedridge, William & Jeanette

24Z00003



1:4,800 or 1 inch = 400 feet

This map was compiled from recorded documents and does not reflect an actual survey. The Brevard County Board of County Commissioners does not assume responsibility for errors or omissions hereon.

Produced by BoCC - GIS Date: 1/29/2024

## SJRWMD FLUCCS WETLANDS

- Wetland Hardwood Forests - Series 6100
- Wetland Coniferous Forest - Series 6200
- Wetland Forested Mixed - Series 6300
- Vegetated Non-Forested Wetlands - Series 6400
- Non-Vegetated Wetland - Series 6500

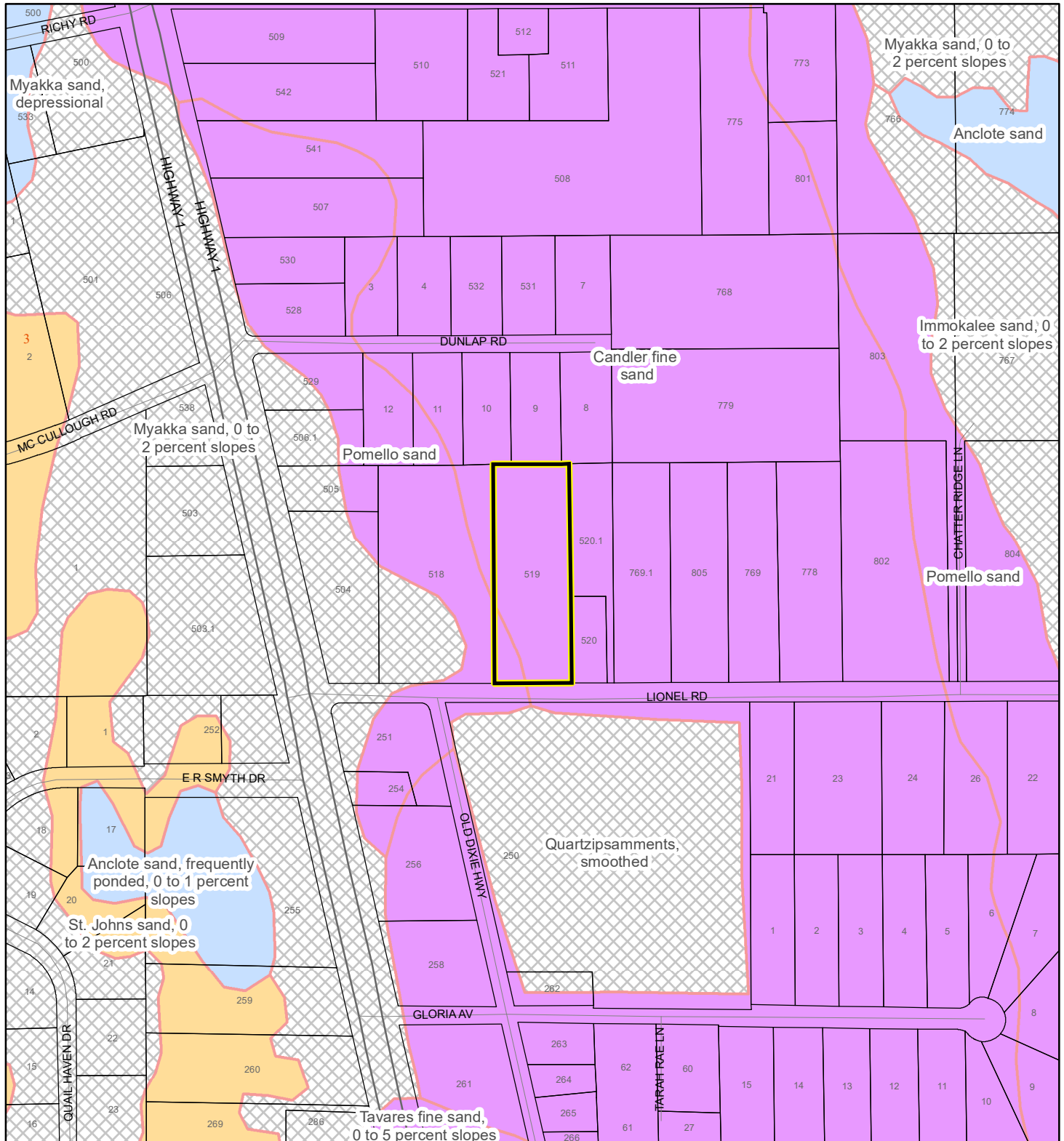
Subject Property

Parcels

# USDA SCSSS SOILS MAP

Gonedridge, William & Jeanette

24Z00003



1:4,800 or 1 inch = 400 feet

This map was compiled from recorded documents and does not reflect an actual survey. The Brevard County Board of County Commissioners does not assume responsibility for errors or omissions hereon.

Produced by BoCC - GIS Date: 1/29/2024

## USDA SCSSS Soils

- Aquifer and Hydric
- Aquifer
- Hydric
- None

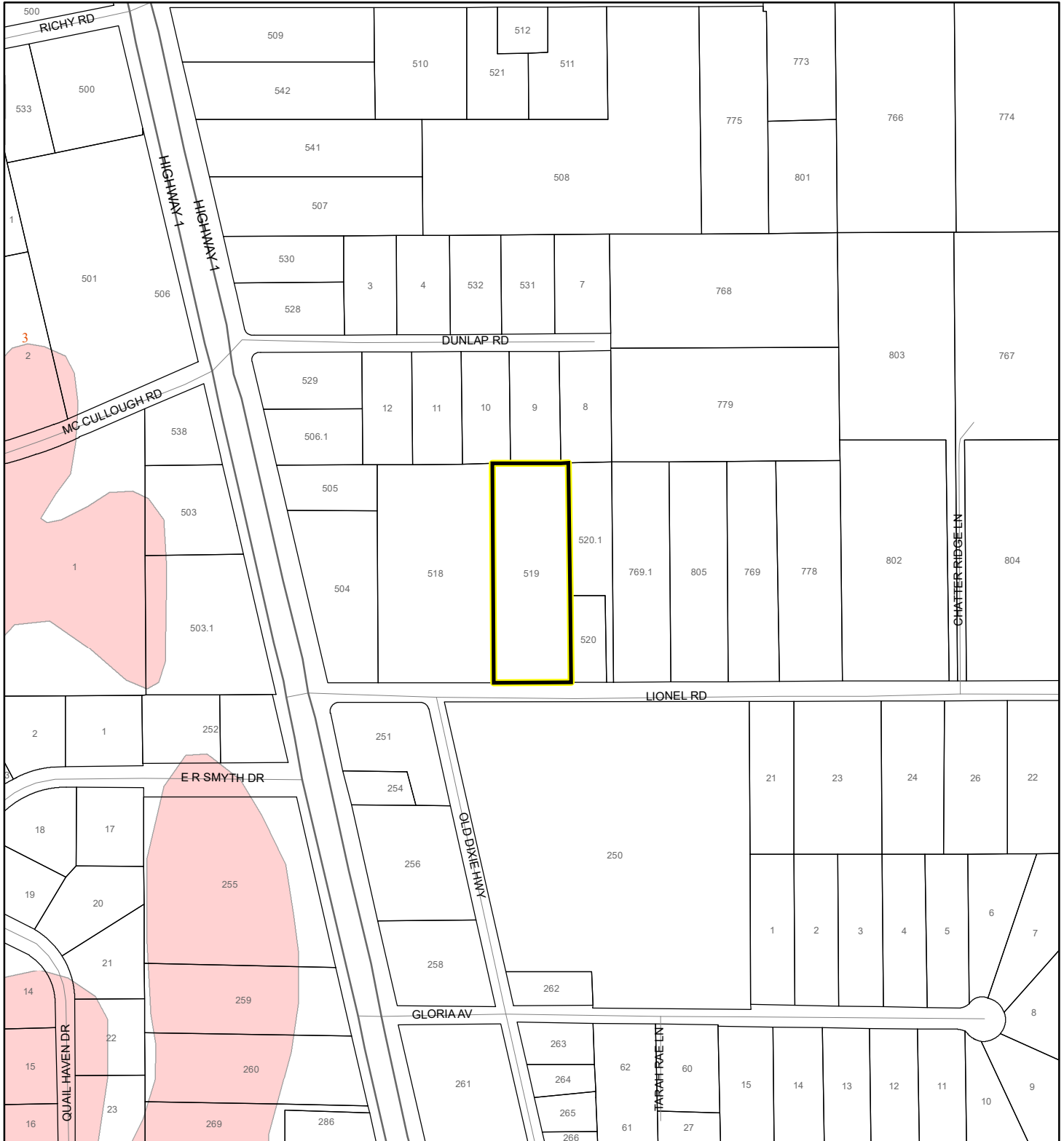
Subject Property

Parcels

# FEMA FLOOD ZONES MAP

Gonedridge, William & Jeanette

24Z00003



1:4,800 or 1 inch = 400 feet

This map was compiled from recorded documents and does not reflect an actual survey. The Brevard County Board of County Commissioners does not assume responsibility for errors or omissions hereon.

Produced by BoCC - GIS Date: 1/29/2024

## FEMA Flood Zones

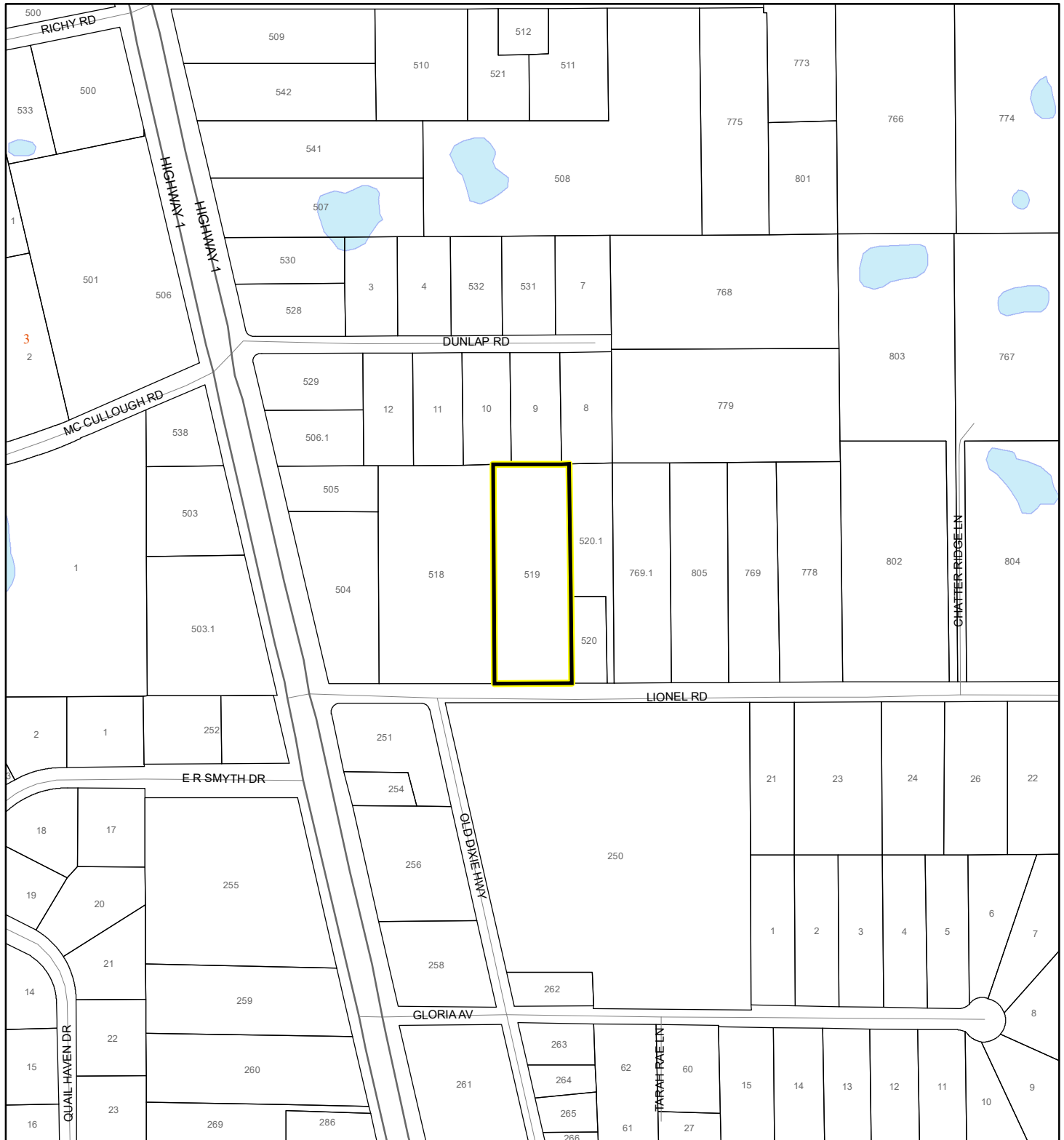
- |                  |            |   |
|------------------|------------|---|
| A                | AO         | X |
| AE               | Open Water |   |
| AH               | VE         |   |
| Subject Property | Parcels    |   |



# COASTAL HIGH HAZARD AREA MAP

Gonedridge, William & Jeanette

24Z00003



1:4,800 or 1 inch = 400 feet


This map was compiled from recorded documents and does not reflect an actual survey. The Brevard County Board of County Commissioners does not assume responsibility for errors or omissions hereon.

Produced by BoCC - GIS Date: 1/29/2024

 Subject Property

 Parcels

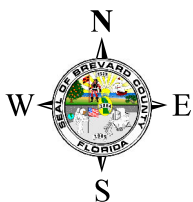
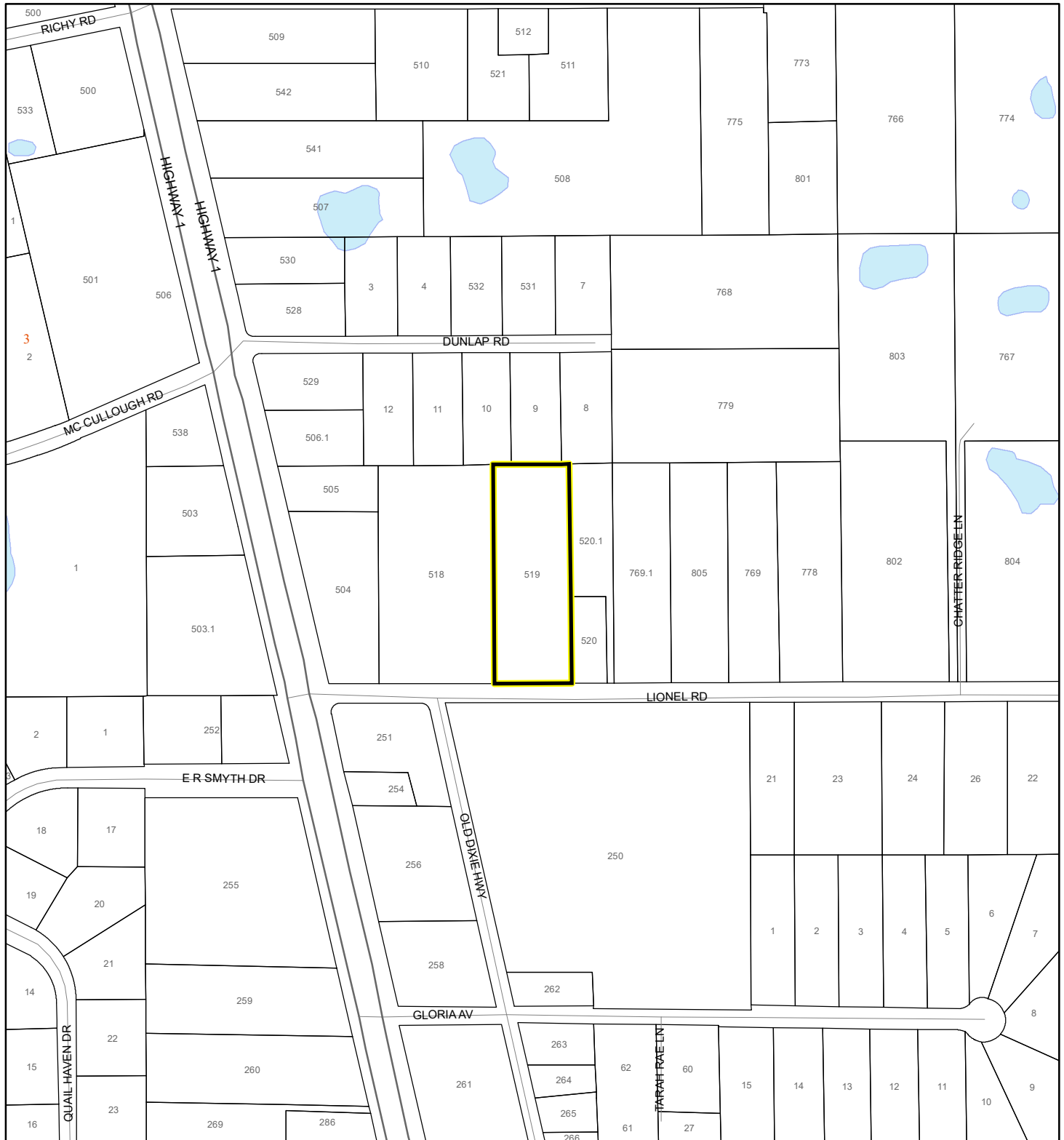
**Coastal High Hazard Area**

 SurgeZoneCat1

# INDIAN RIVER LAGOON SEPTIC OVERLAY MAP

Gonedridge, William & Jeanette

24Z00003



1:4,800 or 1 inch = 400 feet

This map was compiled from recorded documents and does not reflect an actual survey. The Brevard County Board of County Commissioners does not assume responsibility for errors or omissions hereon.

Produced by BoCC - GIS Date: 1/29/2024

 Subject Property

 Parcels

**Septic Overlay**

 40 Meters

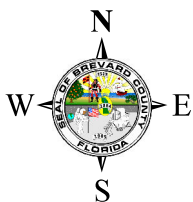
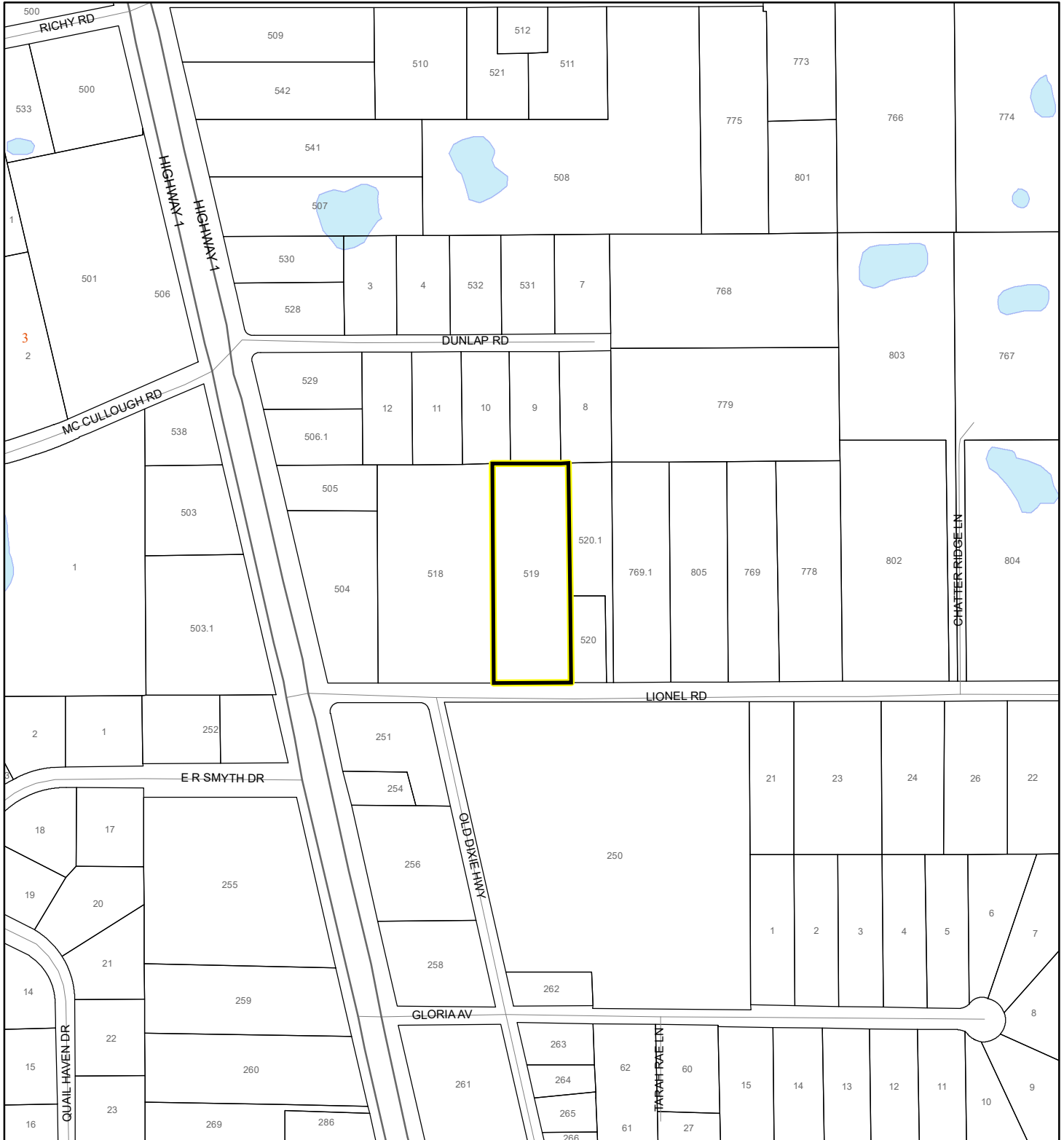
 60 Meters

 All Distances

# EAGLE NESTS MAP

Gonedridge, William & Jeanette

24Z00003



1:4,800 or 1 inch = 400 feet

This map was compiled from recorded documents and does not reflect an actual survey. The Brevard County Board of County Commissioners does not assume responsibility for errors or omissions hereon.

Produced by BoCC - GIS Date: 1/29/2024

 Subject Property

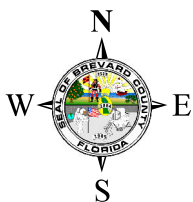
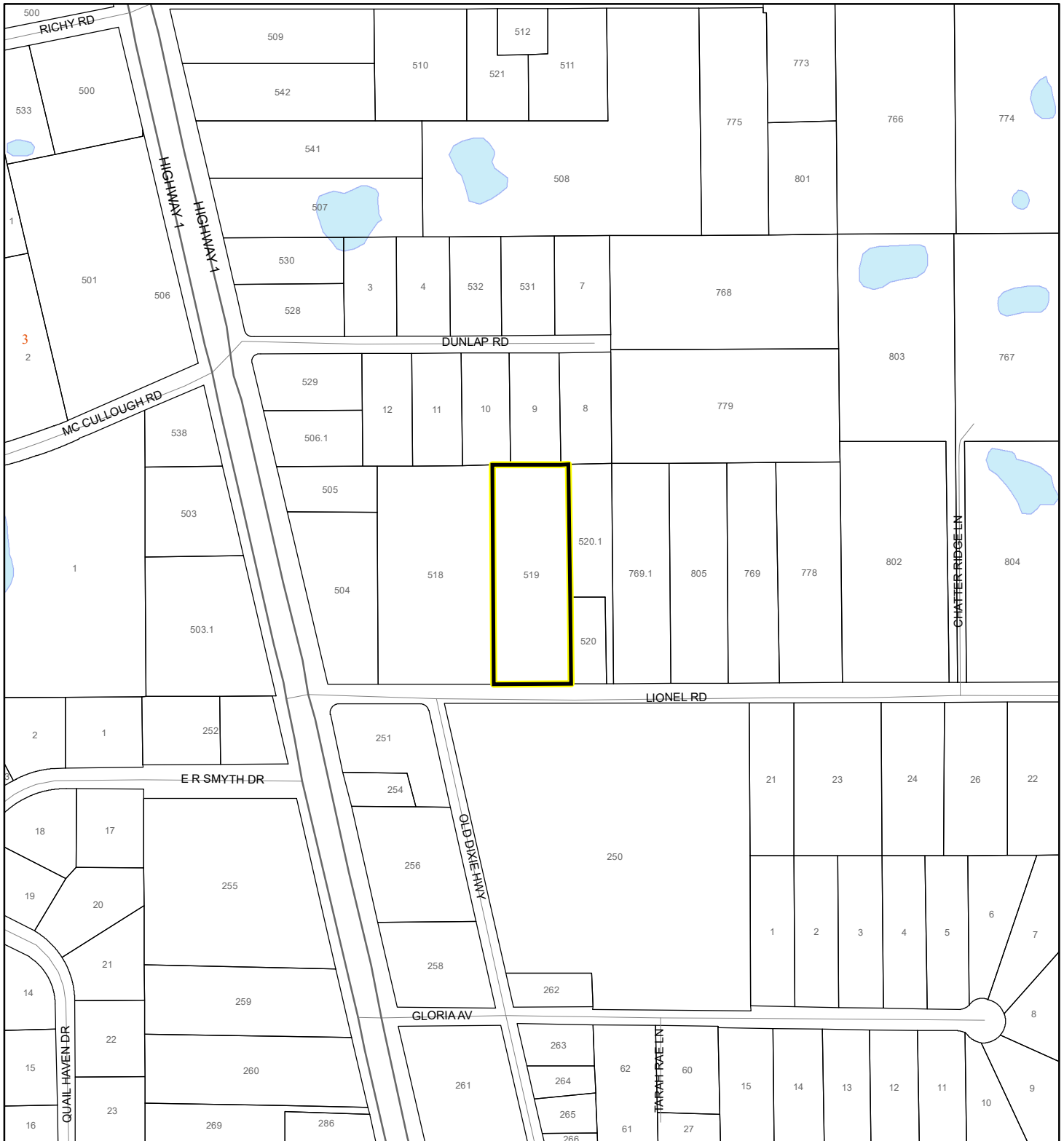
 Parcels

 Eagle Nests  
FWS

# SCRUB JAY OCCUPANCY MAP

Gonedridge, William & Jeanette




24Z00003



1:4,800 or 1 inch = 400 feet

This map was compiled from recorded documents and does not reflect an actual survey. The Brevard County Board of County Commissioners does not assume responsibility for errors or omissions hereon.

Produced by BoCC - GIS Date: 1/29/2024

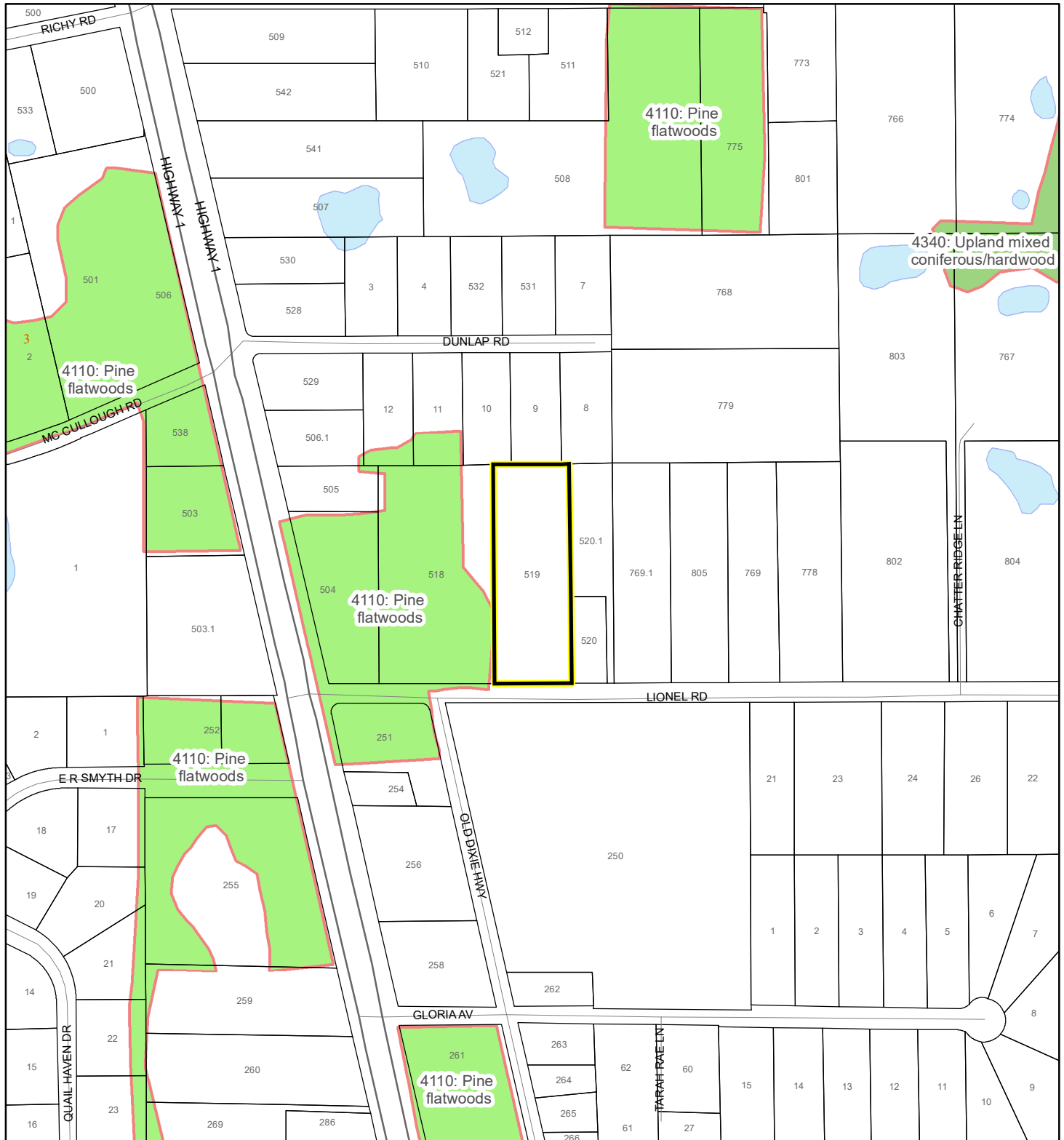
-  Subject Property
-  Parcels
-  Scrub Jay Occupancy



# SJRWMD FLUCCS UPLAND FORESTS - 4000 Series MAP

Gonedridge, William & Jeanette

24Z00003



1:4,800 or 1 inch = 400 feet

This map was compiled from recorded documents and does not reflect an actual survey. The Brevard County Board of County Commissioners does not assume responsibility for errors or omissions hereon.

Produced by BoCC - GIS Date: 1/29/2024

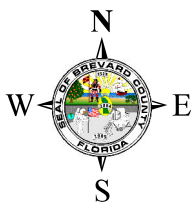
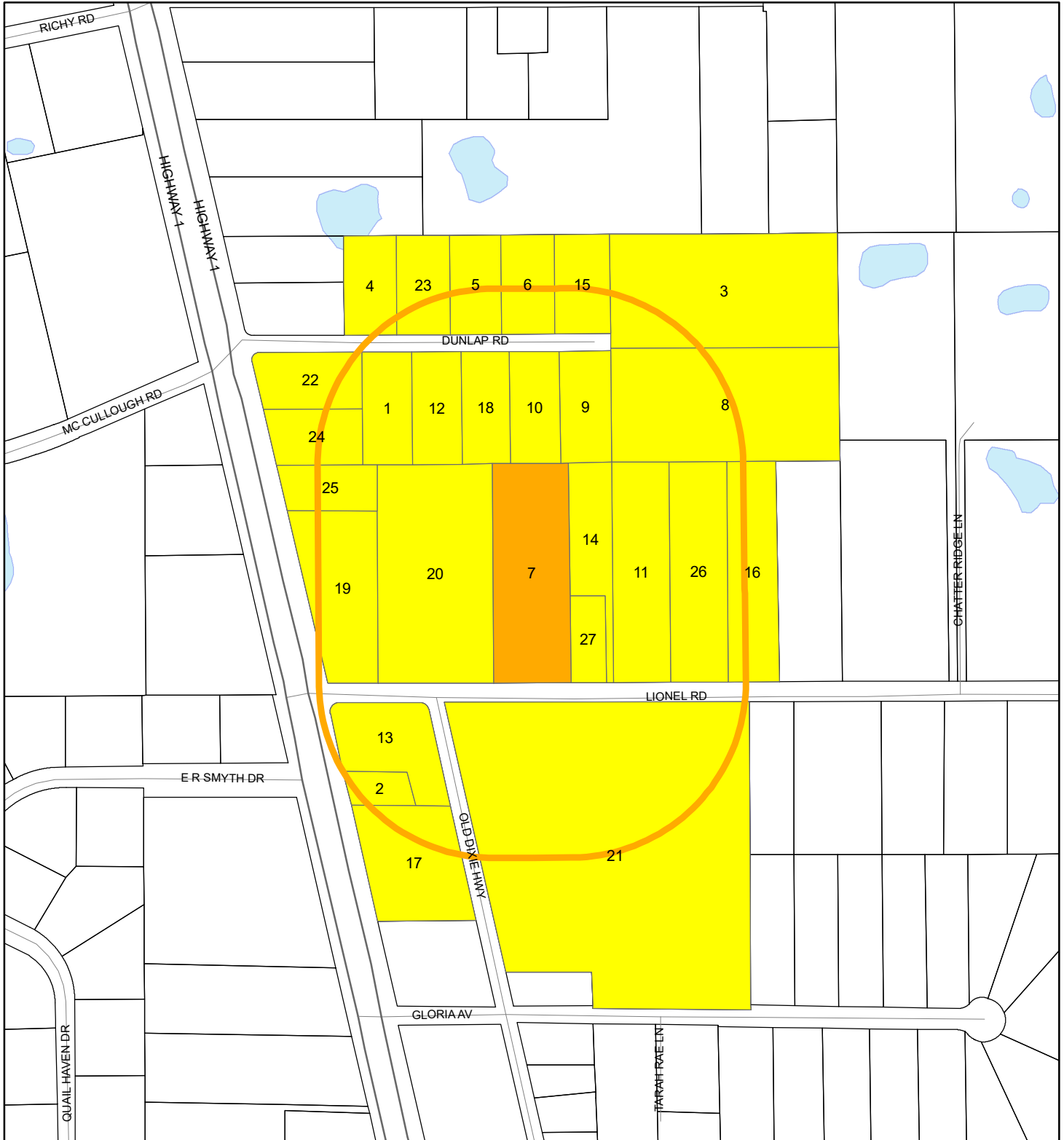
## SJRWMD FLUCCS Upland Forests

- Upland Coniferous Forest - 4100 Series
- Upland Hardwood Forest - 4200 Series
- Upland Mixed Forest - 4300 Series
- Tree Plantations - 4400 Series

Subject Property  Parcels

# RADIUS MAP

Gonedridge, William & Jeanette  
24Z00003




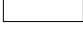


1:4,800 or 1 inch = 400 feet

Buffer Distance: 500 feet

This map was compiled from recorded documents and does not reflect an actual survey. The Brevard County Board of County Commissioners does not assume responsibility for errors or omissions hereon.

Produced by BoCC - GIS Date: 1/29/2024

-  Buffer
-  Subject Property
-  Notify Property
-  Parcels