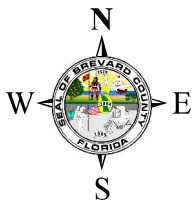
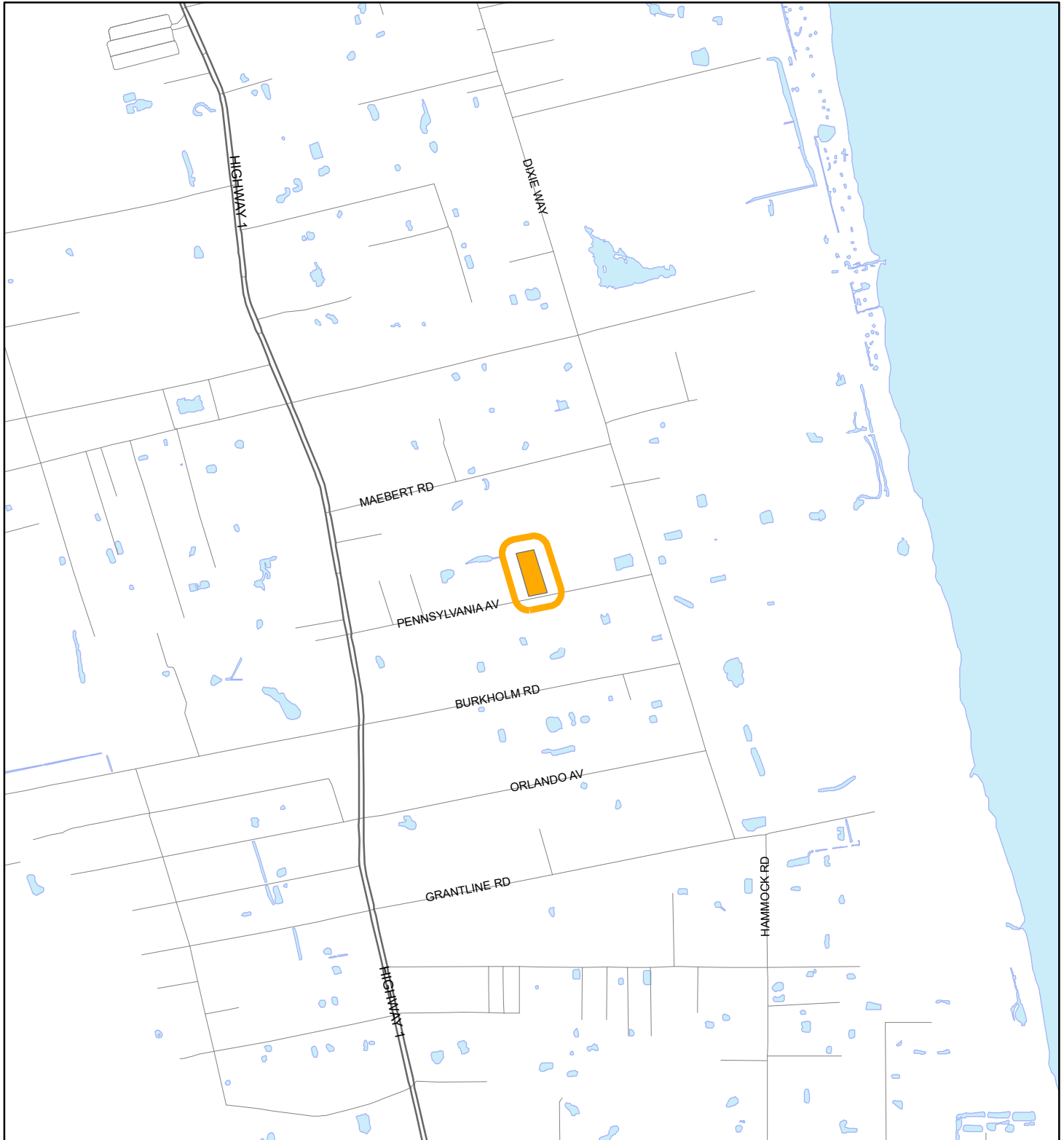


LOCATION MAP

Torres, Randolph & Jileen
24V00027





1:24,000 or 1 inch = 2,000 feet

Buffer Distance: 200 feet

This map was compiled from recorded documents and does not reflect an actual survey. The Brevard County Board of County Commissioners does not assume responsibility for errors or omissions hereon.

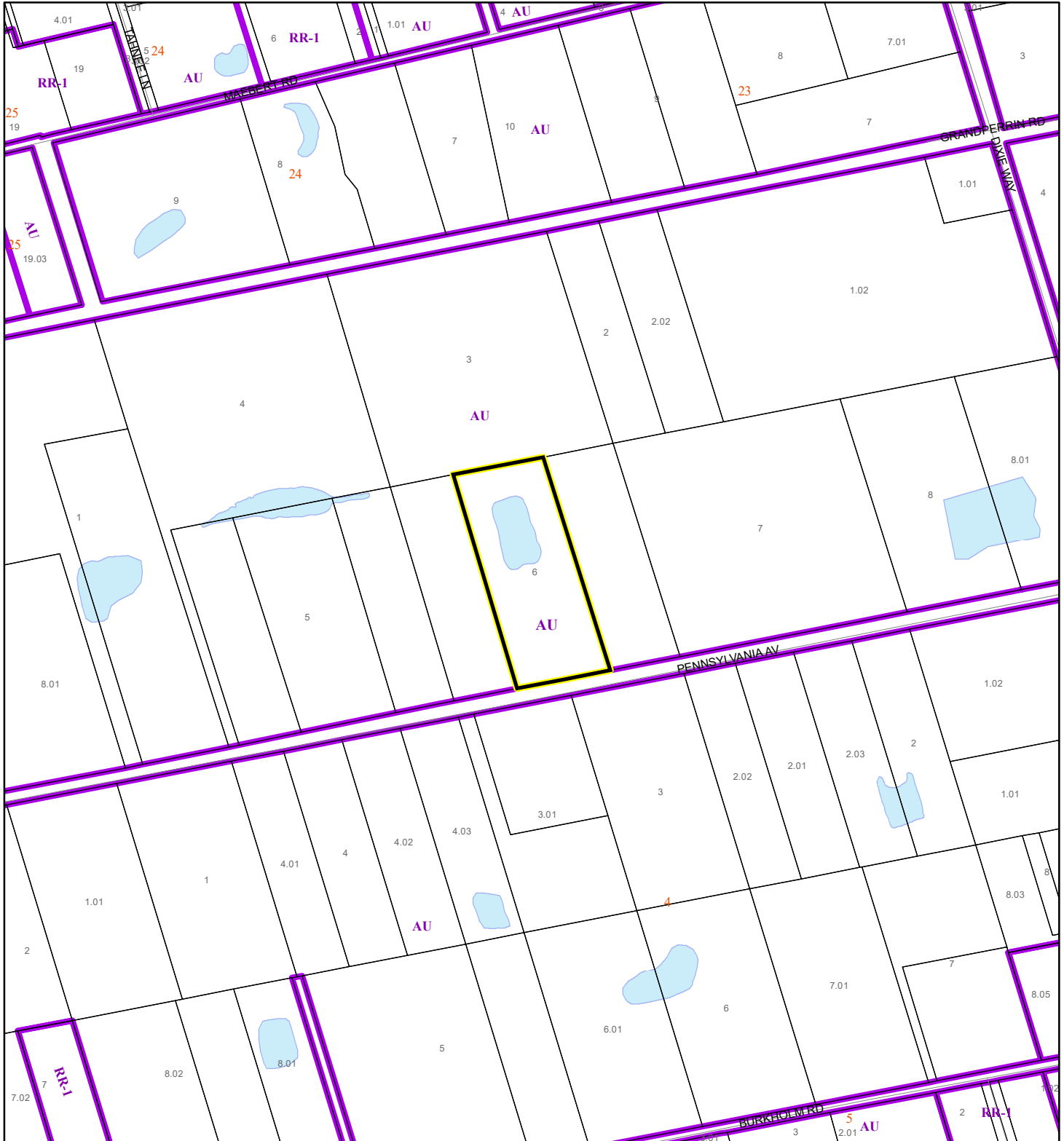
Produced by BoCC - GIS Date: 6/25/2024

 Buffer
 Subject Property

ZONING MAP

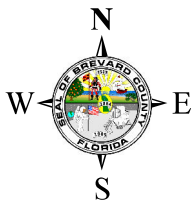
Torres, Randolph & Jileen

24V00027



AERIAL MAP

Torres, Randolph & Jileen
24V00027




1:1,200 or 1 inch = 100 feet

PHOTO YEAR: 2024

This map was compiled from recorded documents and does not reflect an actual survey. The Brevard County Board of County Commissioners does not assume responsibility for errors or omissions hereon.

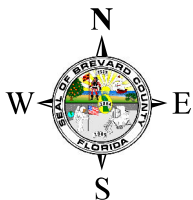
Produced by BoCC - GIS Date: 6/25/2024

 Subject Property

 Parcels

RADIUS MAP

Torres, Randolph & Jileen
24V00027



1:4,800 or 1 inch = 400 feet

Buffer Distance: 200 feet

This map was compiled from recorded documents and does not reflect an actual survey. The Brevard County Board of County Commissioners does not assume responsibility for errors or omissions hereon.

Produced by BoCC - GIS Date: 6/25/2024

- Buffer
- Subject Property
- Notify Property
- Parcels