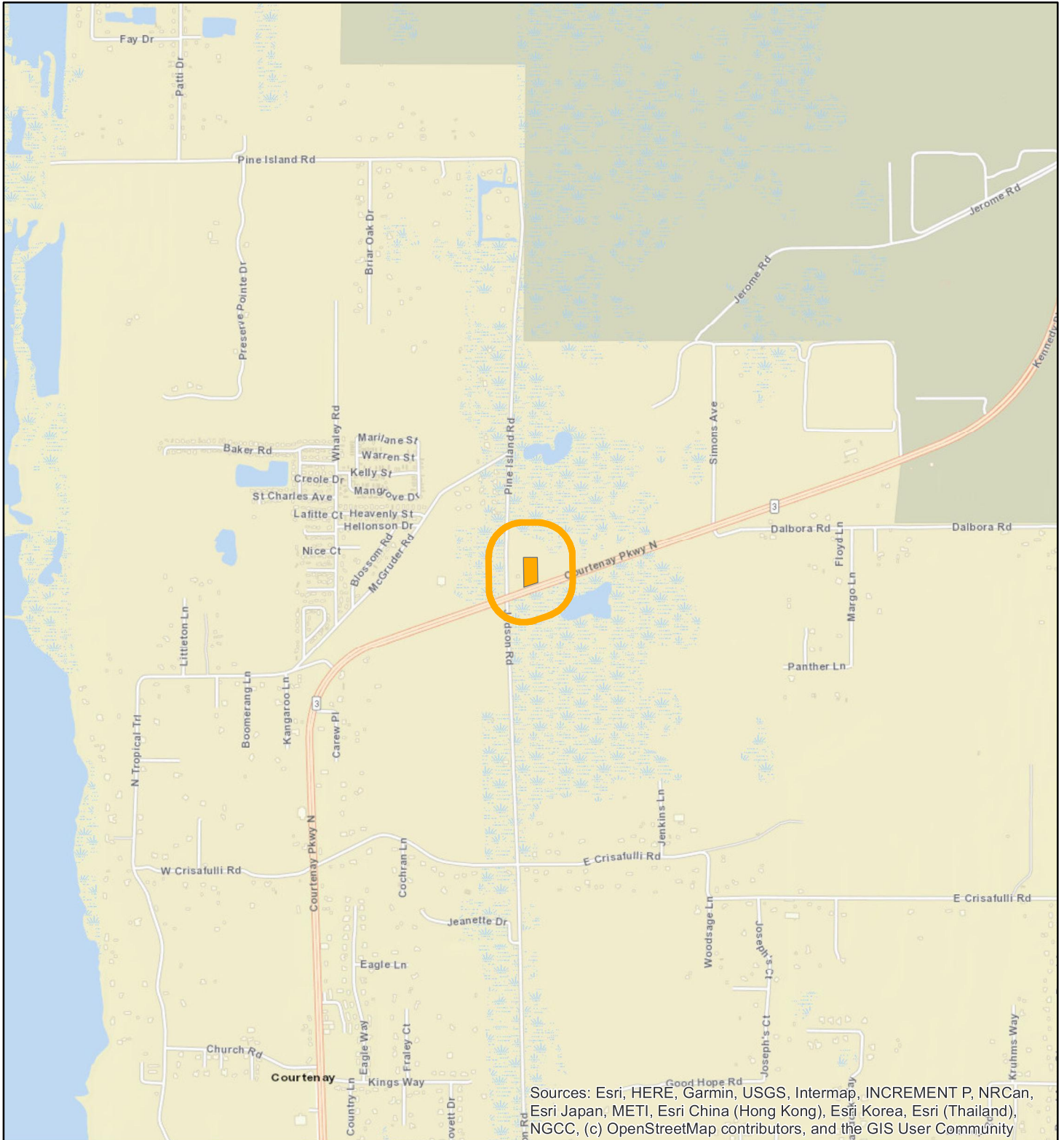
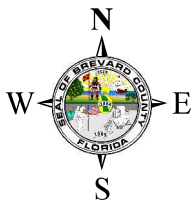


LOCATION MAP

JEANNE A BENSON & ARTHUR W BERGER JR TRUST
26SS00007



Sources: Esri, HERE, Garmin, USGS, Intermap, INCREMENT P, NRCan, Esri Japan, METI, Esri China (Hong Kong), Esri Korea, Esri (Thailand), NGCC, (c) OpenStreetMap contributors, and the GIS User Community





1:24,000 or 1 inch = 2,000 feet

Buffer Distance: 500 feet

This map was compiled from recorded documents and does not reflect an actual survey. The Brevard County Board of County Commissioners does not assume responsibility for errors or omissions hereon.

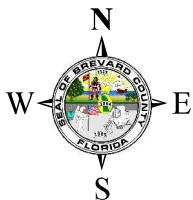
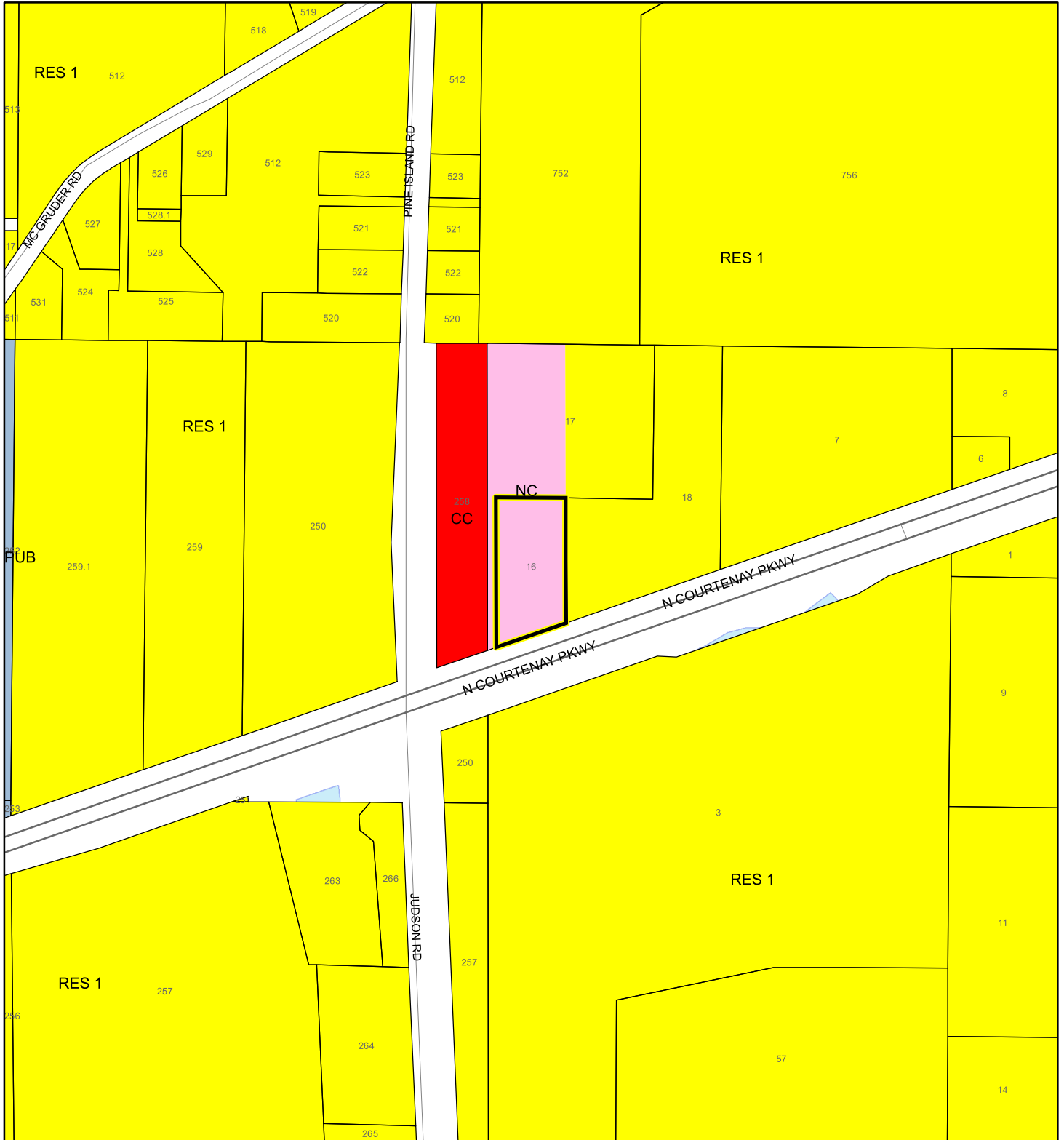
Produced by BoCC - GIS Date: 4/24/2026

-  Buffer
-  Subject Property



FUTURE LAND USE MAP

JEANNE A BENSON & ARTHUR W BERGER JR TRUST

26SS00007



1:4,800 or 1 inch = 400 feet

-  Subject Property
-  Parcels

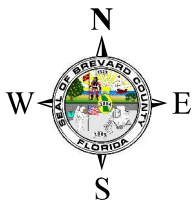
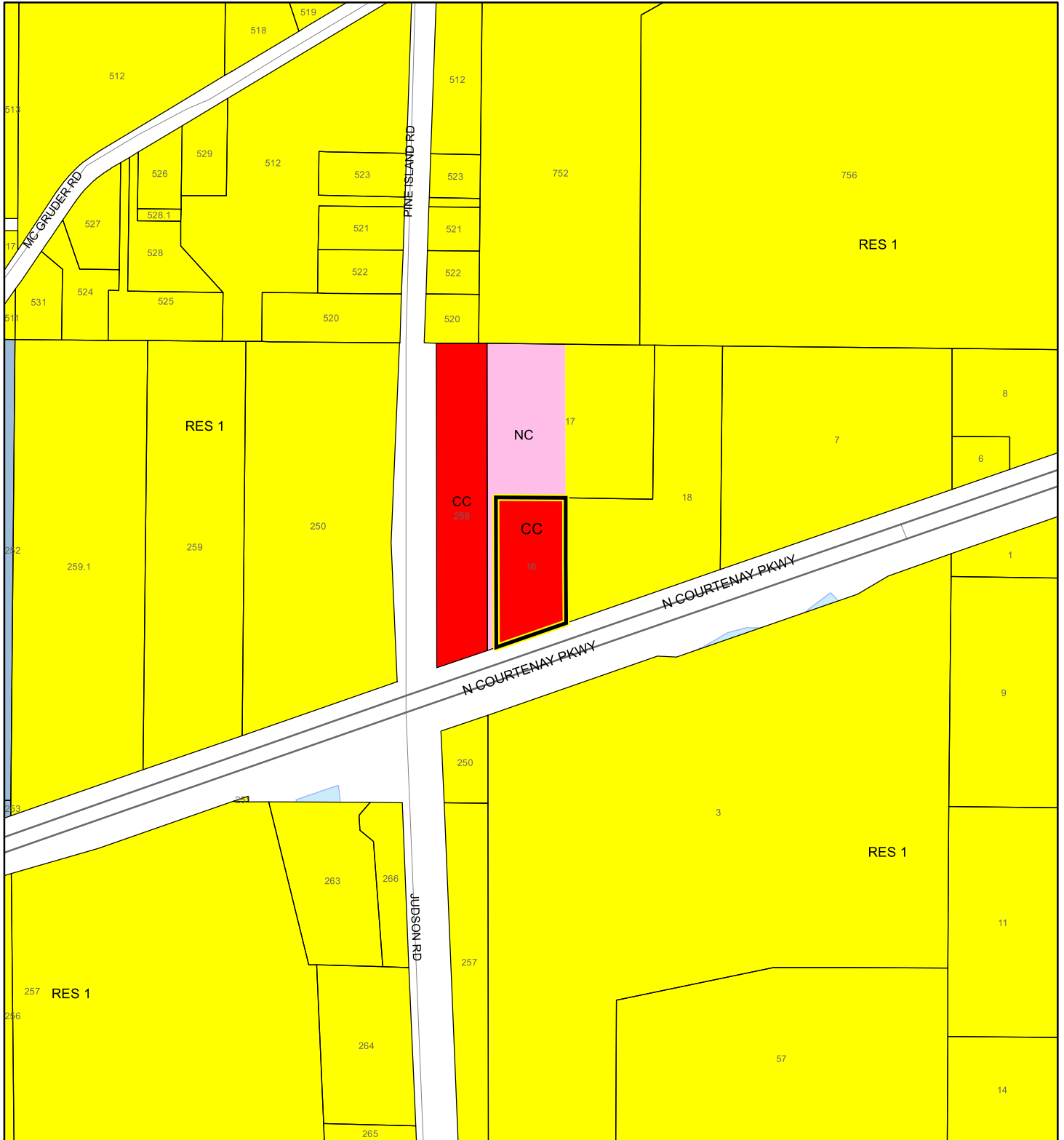
This map was compiled from recorded documents and does not reflect an actual survey. The Brevard County Board of County Commissioners does not assume responsibility for errors or omissions hereon.

Produced by BoCC - GIS Date: 4/24/2026



PROPOSED FUTURE LAND USE MAP

JEANNE A BENSON & ARTHUR W BERGER JR TRUST

26SS00007



1:4,800 or 1 inch = 400 feet

-  Subject Property
-  Parcels

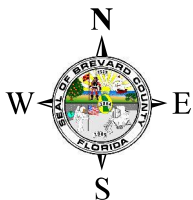
This map was compiled from recorded documents and does not reflect an actual survey. The Brevard County Board of County Commissioners does not assume responsibility for errors or omissions hereon.

Produced by BoCC - GIS Date: 4/24/2026

AERIAL MAP

JEANNE A BENSON & ARTHUR W BERGER JR TRUST

26SS00007




1:4,800 or 1 inch = 400 feet

PHOTO YEAR: 2026

This map was compiled from recorded documents and does not reflect an actual survey. The Brevard County Board of County Commissioners does not assume responsibility for errors or omissions hereon.

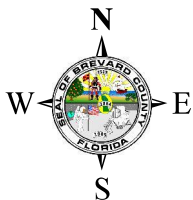
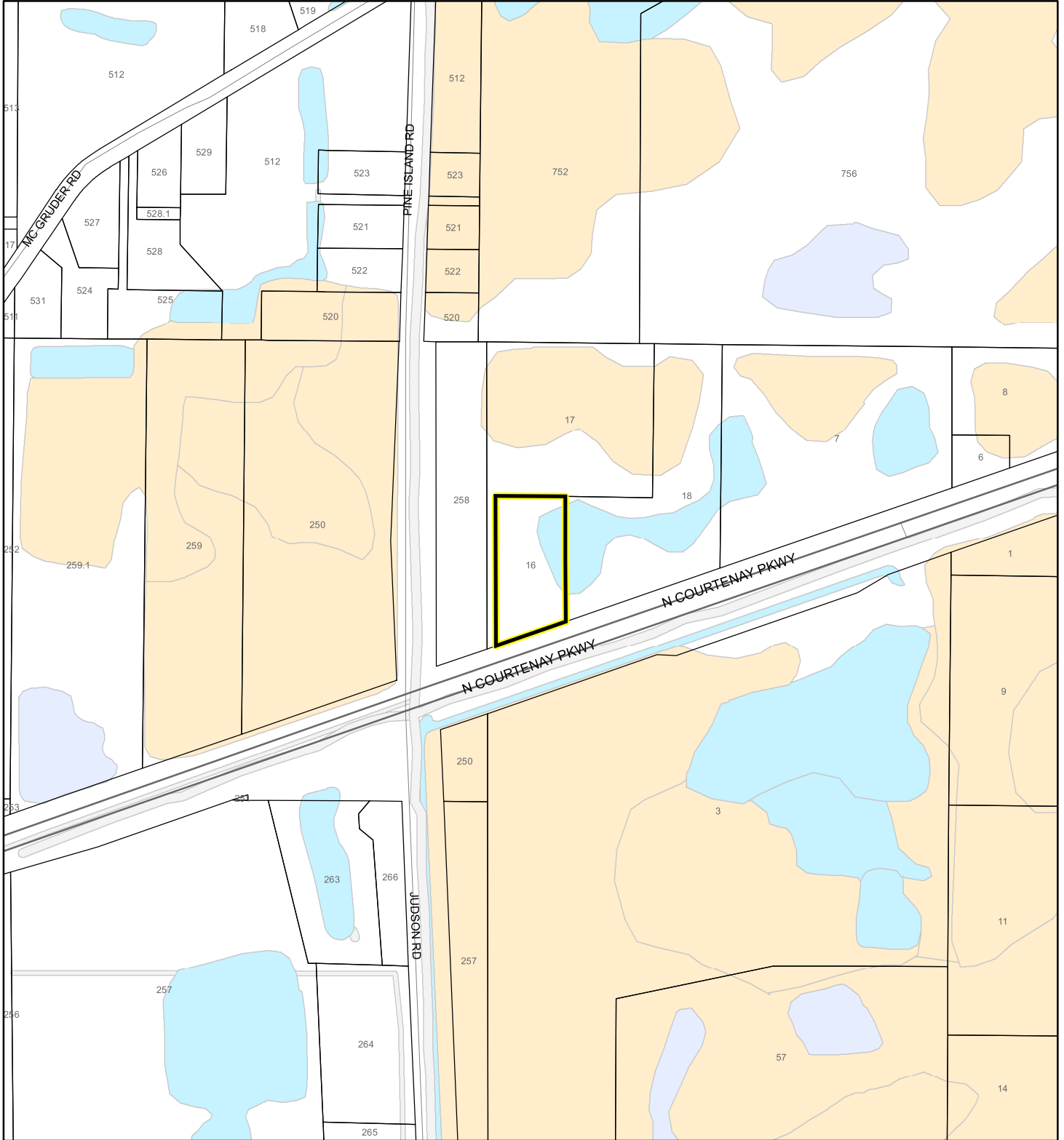
Produced by BoCC - GIS Date: 4/24/2026

 Subject Property

 Parcels

NWI WETLANDS MAP

JEANNE A BENSON & ARTHUR W BERGER JR TRUST
26SS00007






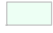

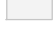

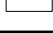


1:4,800 or 1 inch = 400 feet

This map was compiled from recorded documents and does not reflect an actual survey. The Brevard County Board of County Commissioners does not assume responsibility for errors or omissions hereon.

Produced by BoCC - GIS Date: 4/24/2026

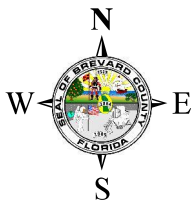
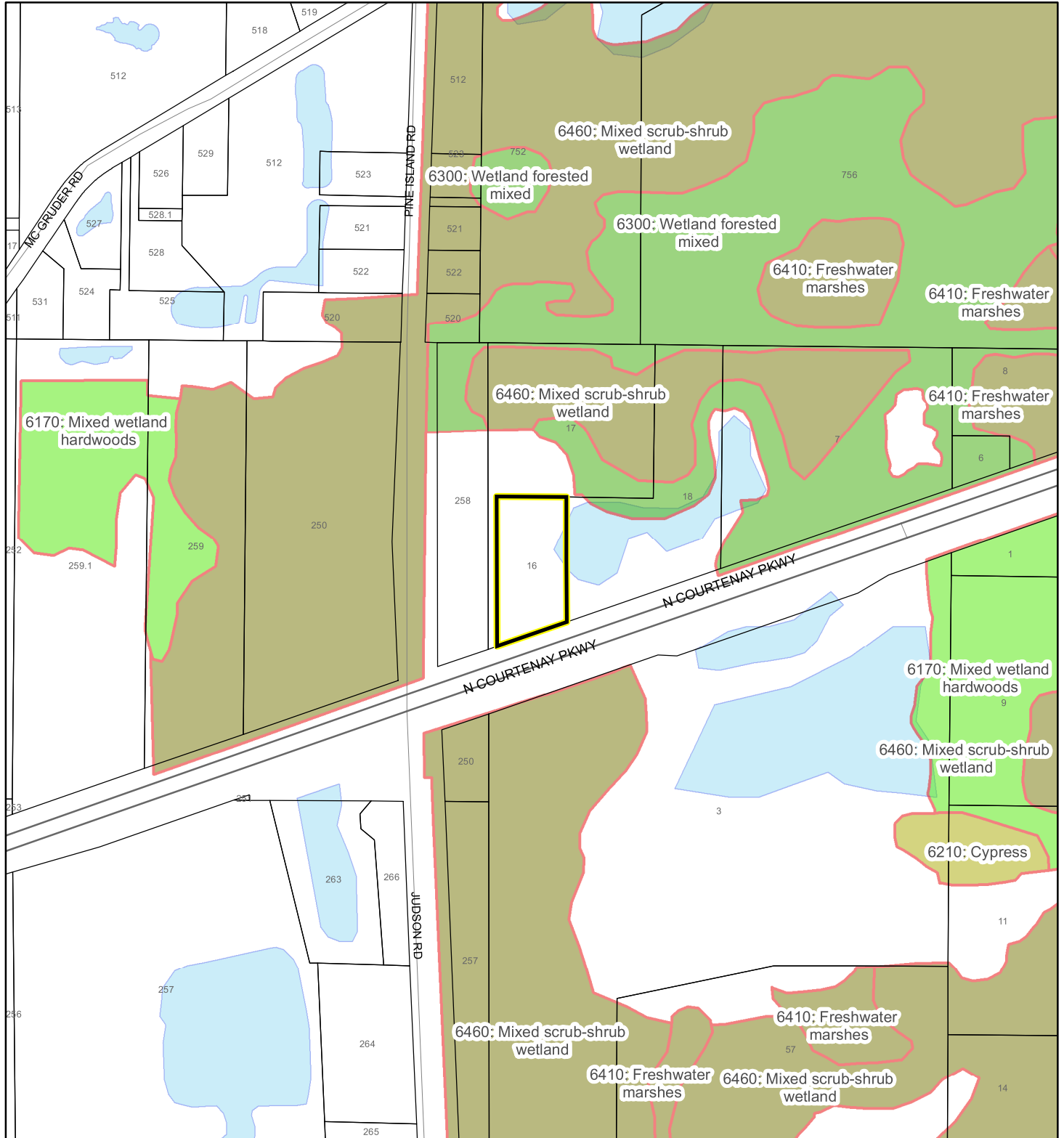
National Wetlands Inventory (NWI)

- | | |
|--|--|
|  Estuarine and Marine Deepwater |  Freshwater Pond |
|  Estuarine and Marine Wetland |  Lake |
|  Freshwater Emergent Wetland |  Other |
|  Freshwater Forested/Shrub Wetland |  Riverine |
| |  Subject Property |
| |  Parcels |

SJRWMD FLUCCS WETLANDS - 6000 Series MAP

JEANNE A BENSON & ARTHUR W BERGER JR TRUST

26SS00007



1:4,800 or 1 inch = 400 feet

This map was compiled from recorded documents and does not reflect an actual survey. The Brevard County Board of County Commissioners does not assume responsibility for errors or omissions hereon.

Produced by BoCC - GIS Date: 4/24/2026

SJRWMD FLUCCS WETLANDS

- Wetland Hardwood Forests - Series 6100
- Wetland Coniferous Forest - Series 6200
- Wetland Forested Mixed - Series 6300
- Vegetated Non-Forested Wetlands - Series 6400
- Non-Vegetated Wetland - Series 6500

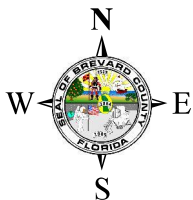
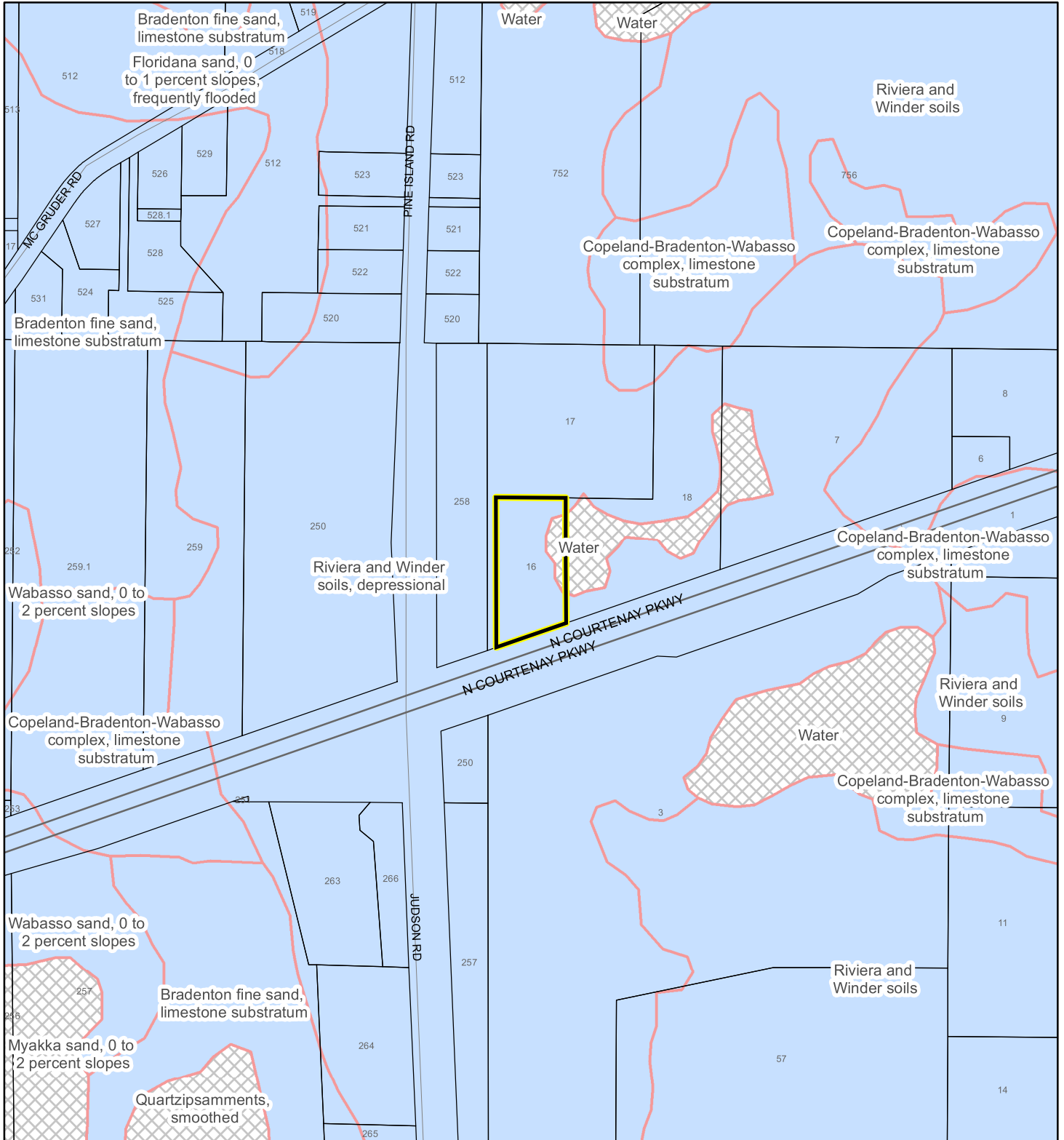
Subject Property

Parcels

USDA SCSSS SOILS MAP

JEANNE A BENSON & ARTHUR W BERGER JR TRUST

26SS00007



1:4,800 or 1 inch = 400 feet

This map was compiled from recorded documents and does not reflect an actual survey. The Brevard County Board of County Commissioners does not assume responsibility for errors or omissions hereon.

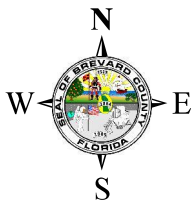
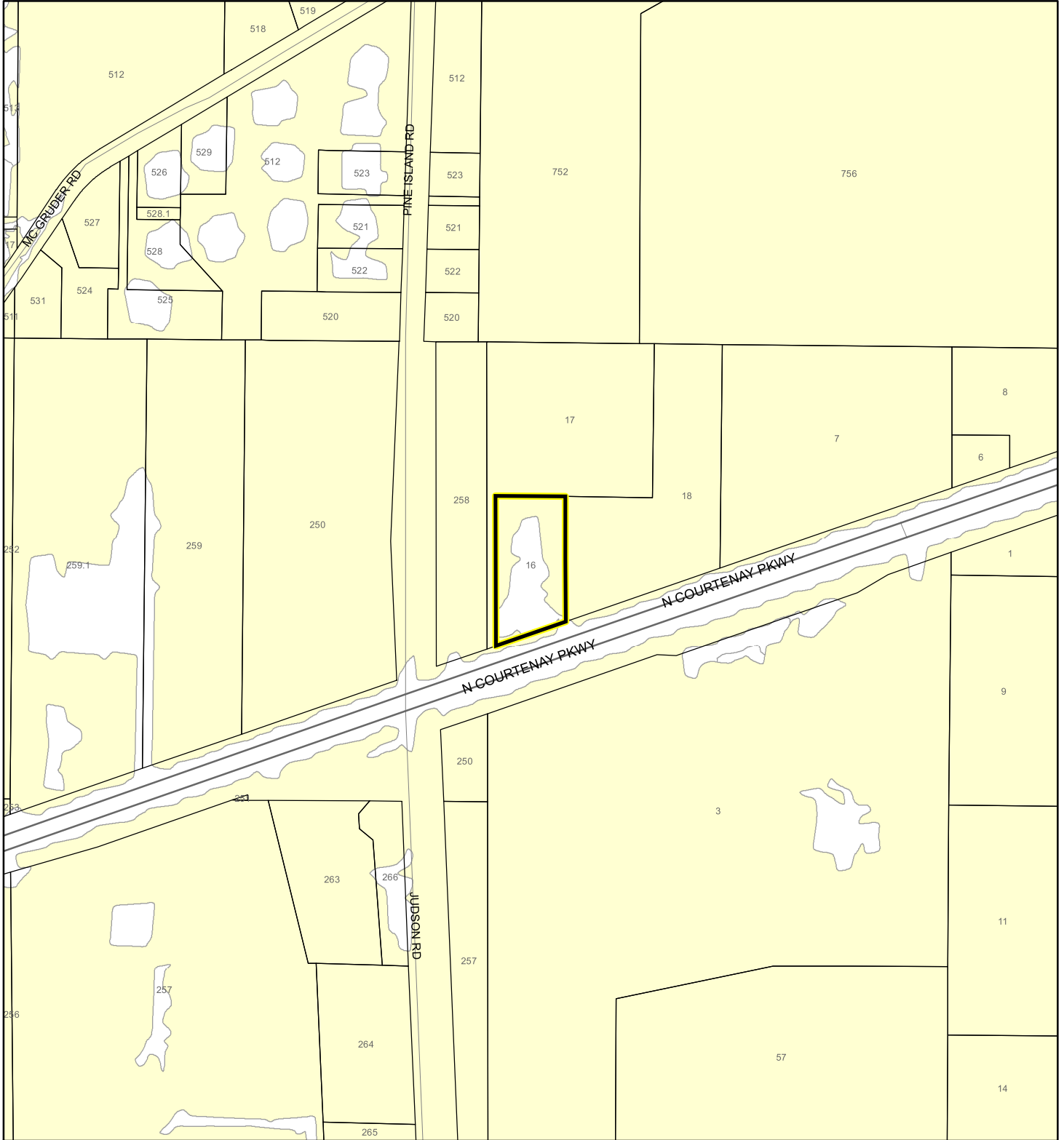
Produced by BoCC - GIS Date: 4/24/2026

USDA SCSSS Soils

- Aquifer and Hydric
- Aquifer
- Hydric
- None
- Subject Property
- Parcels

FEMA FLOOD ZONES MAP

JEANNE A BENSON & ARTHUR W BERGER JR TRUST
26SS00007



1:4,800 or 1 inch = 400 feet

This map was compiled from recorded documents and does not reflect an actual survey. The Brevard County Board of County Commissioners does not assume responsibility for errors or omissions hereon.

Produced by BoCC - GIS Date: 4/24/2026

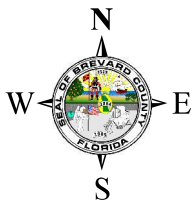
FEMA Flood Zones

- | | | |
|------------------|------------|---|
| A | AO | X |
| AE | Open Water | |
| AH | VE | |
| Subject Property | Parcels | |

COASTAL HIGH HAZARD AREA MAP

JEANNE A BENSON & ARTHUR W BERGER JR TRUST

26SS00007



1:4,800 or 1 inch = 400 feet


This map was compiled from recorded documents and does not reflect an actual survey. The Brevard County Board of County Commissioners does not assume responsibility for errors or omissions hereon.

Produced by BoCC - GIS Date: 4/24/2026

 Subject Property

 Parcels

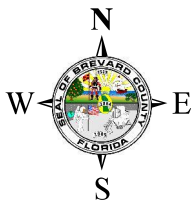
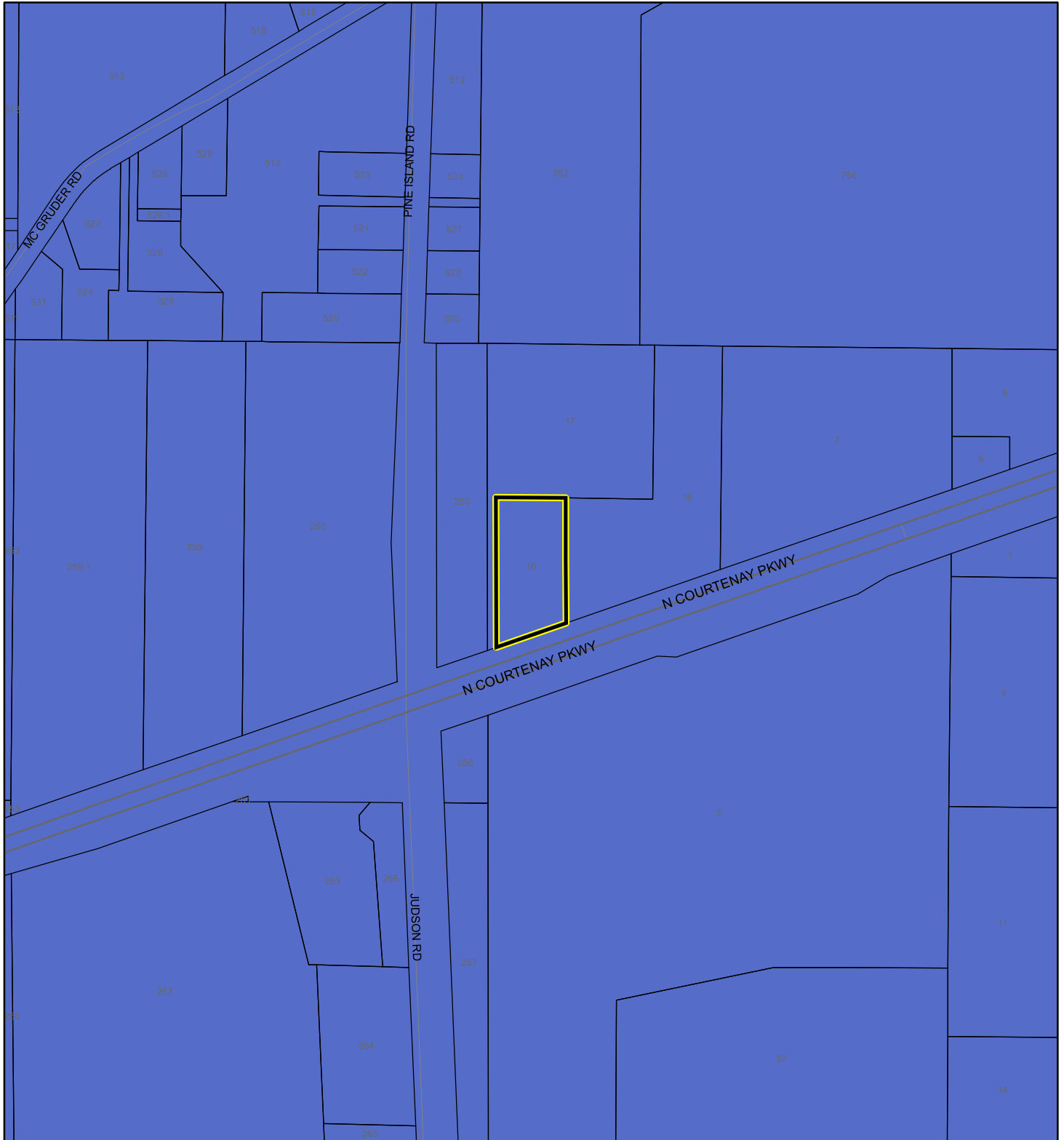
Coastal High Hazard Area

 SurgeZoneCat1

INDIAN RIVER LAGOON SEPTIC OVERLAY MAP

JEANNE A BENSON & ARTHUR W BERGER JR TRUST

26SS00007



1:4,800 or 1 inch = 400 feet

This map was compiled from recorded documents and does not reflect an actual survey. The Brevard County Board of County Commissioners does not assume responsibility for errors or omissions hereon.

Produced by BoCC - GIS Date: 4/24/2026

 Subject Property

 Parcels

Septic Overlay

 40 Meters

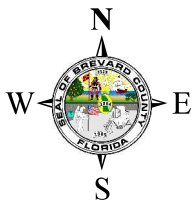
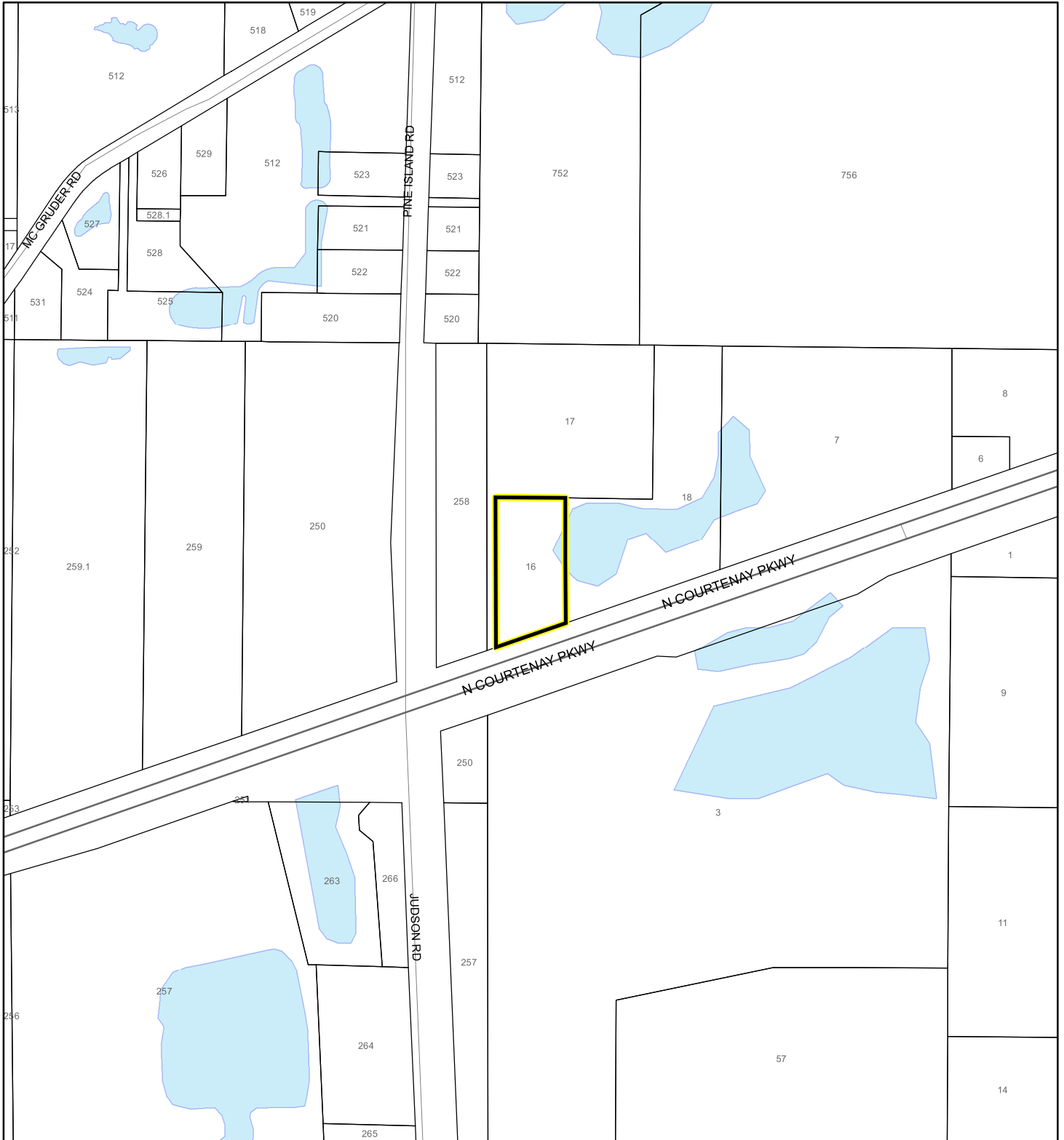
 60 Meters

 All Distances

EAGLE NESTS MAP

JEANNE A BENSON & ARTHUR W BERGER JR TRUST

26SS00007



1:4,800 or 1 inch = 400 feet

This map was compiled from recorded documents and does not reflect an actual survey. The Brevard County Board of County Commissioners does not assume responsibility for errors or omissions hereon.

Produced by BoCC - GIS Date: 4/24/2026

 Subject Property

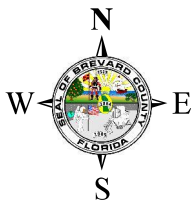
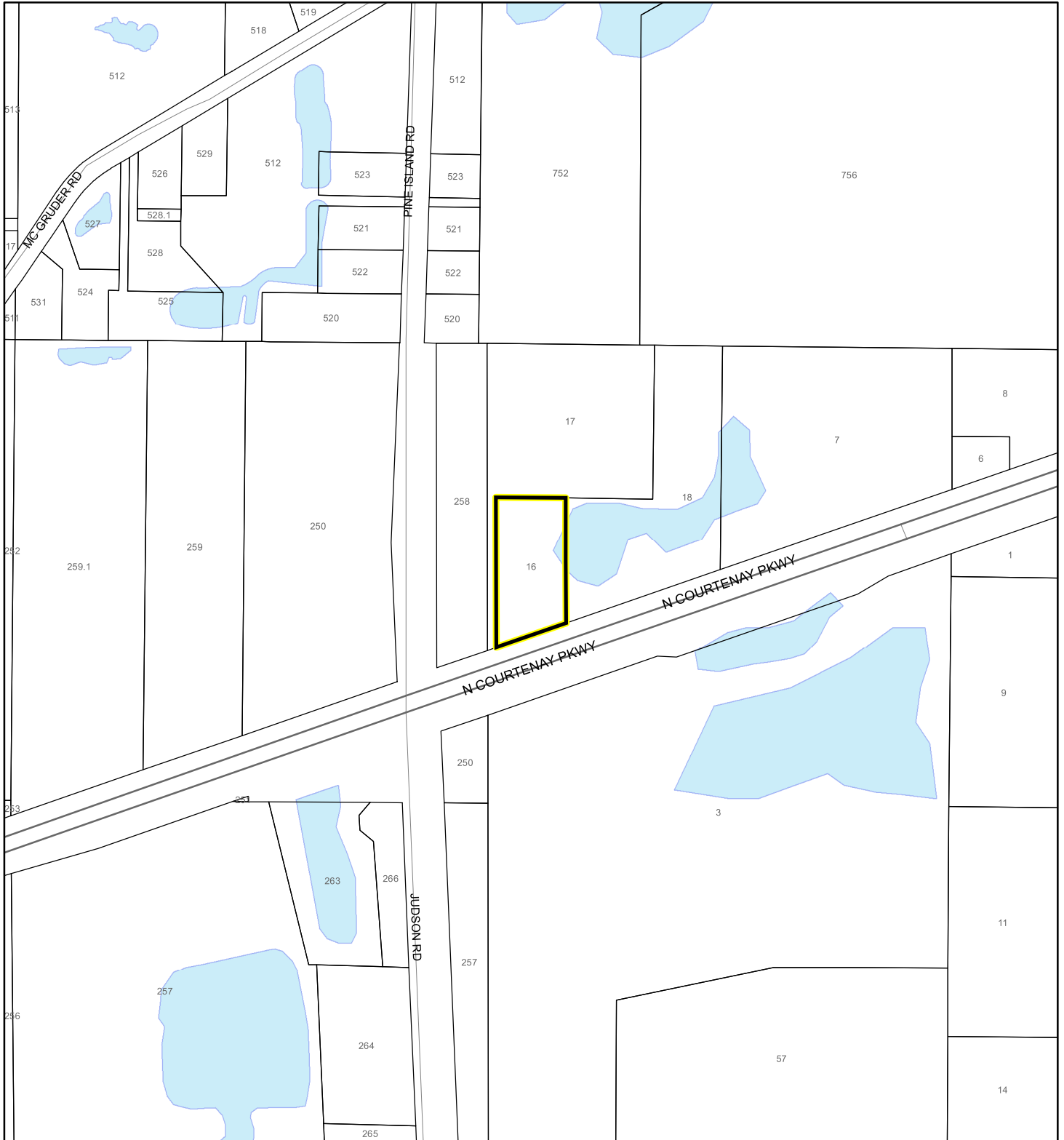
 Parcels

 Eagle Nests
FWS

SCRUB JAY OCCUPANCY MAP

JEANNE A BENSON & ARTHUR W BERGER JR TRUST




26SS00007



1:4,800 or 1 inch = 400 feet

This map was compiled from recorded documents and does not reflect an actual survey. The Brevard County Board of County Commissioners does not assume responsibility for errors or omissions hereon.

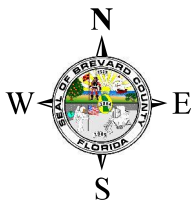
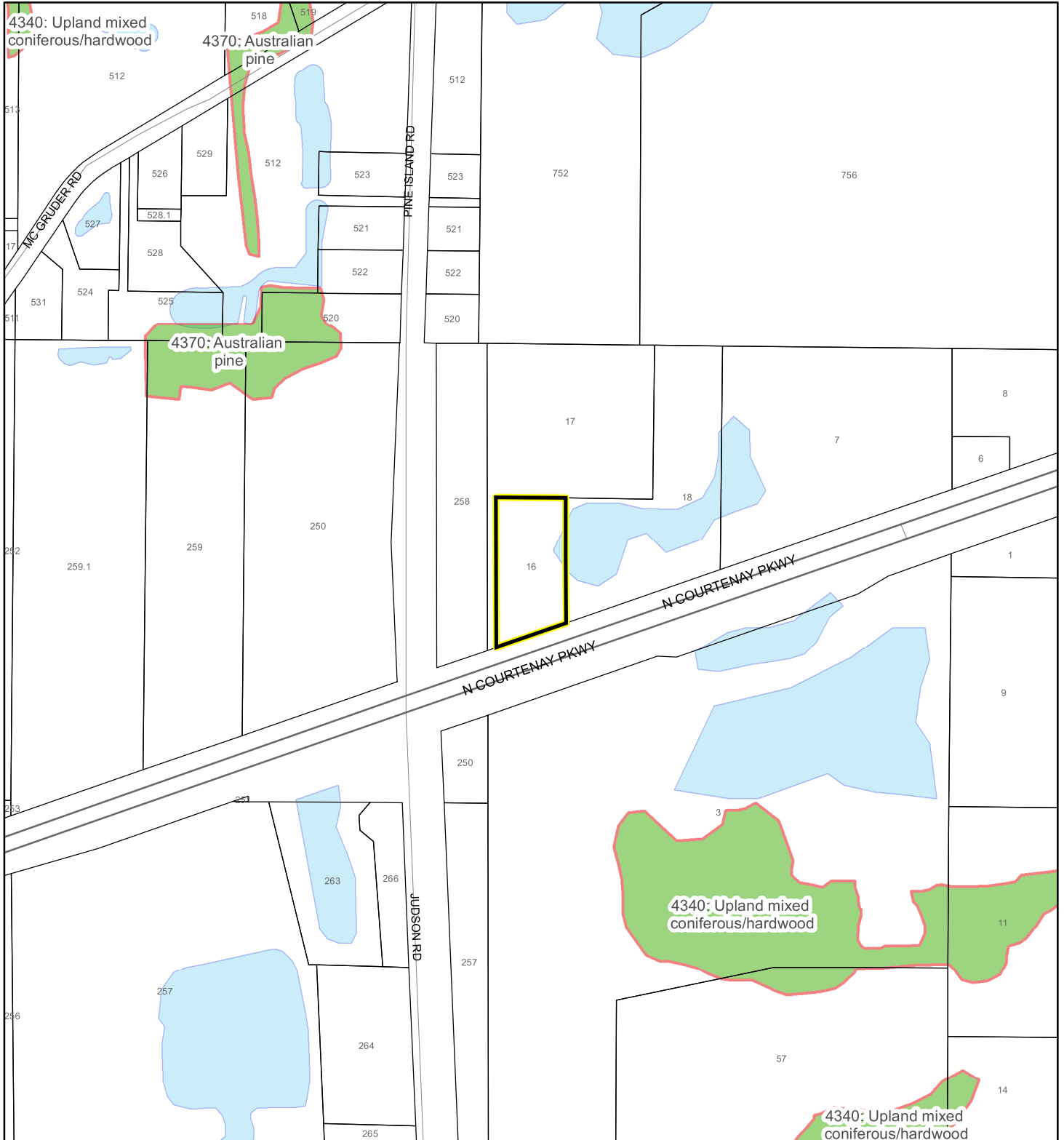
Produced by BoCC - GIS Date: 4/24/2026

-  Subject Property
-  Parcels
-  Scrub Jay Occupancy

SJRWMD FLUCCS UPLAND FORESTS - 4000 Series MAP

JEANNE A BENSON & ARTHUR W BERGER JR TRUST

26SS00007



1:4,800 or 1 inch = 400 feet

This map was compiled from recorded documents and does not reflect an actual survey. The Brevard County Board of County Commissioners does not assume responsibility for errors or omissions hereon.

Produced by BoCC - GIS Date: 4/24/2026

SJRWMD FLUCCS Upland Forests

- Upland Coniferous Forest - 4100 Series
- Upland Hardwood Forest - 4200 Series
- Upland Mixed Forest - 4300 Series
- Tree Plantations - 4400 Series

Subject Property Parcels