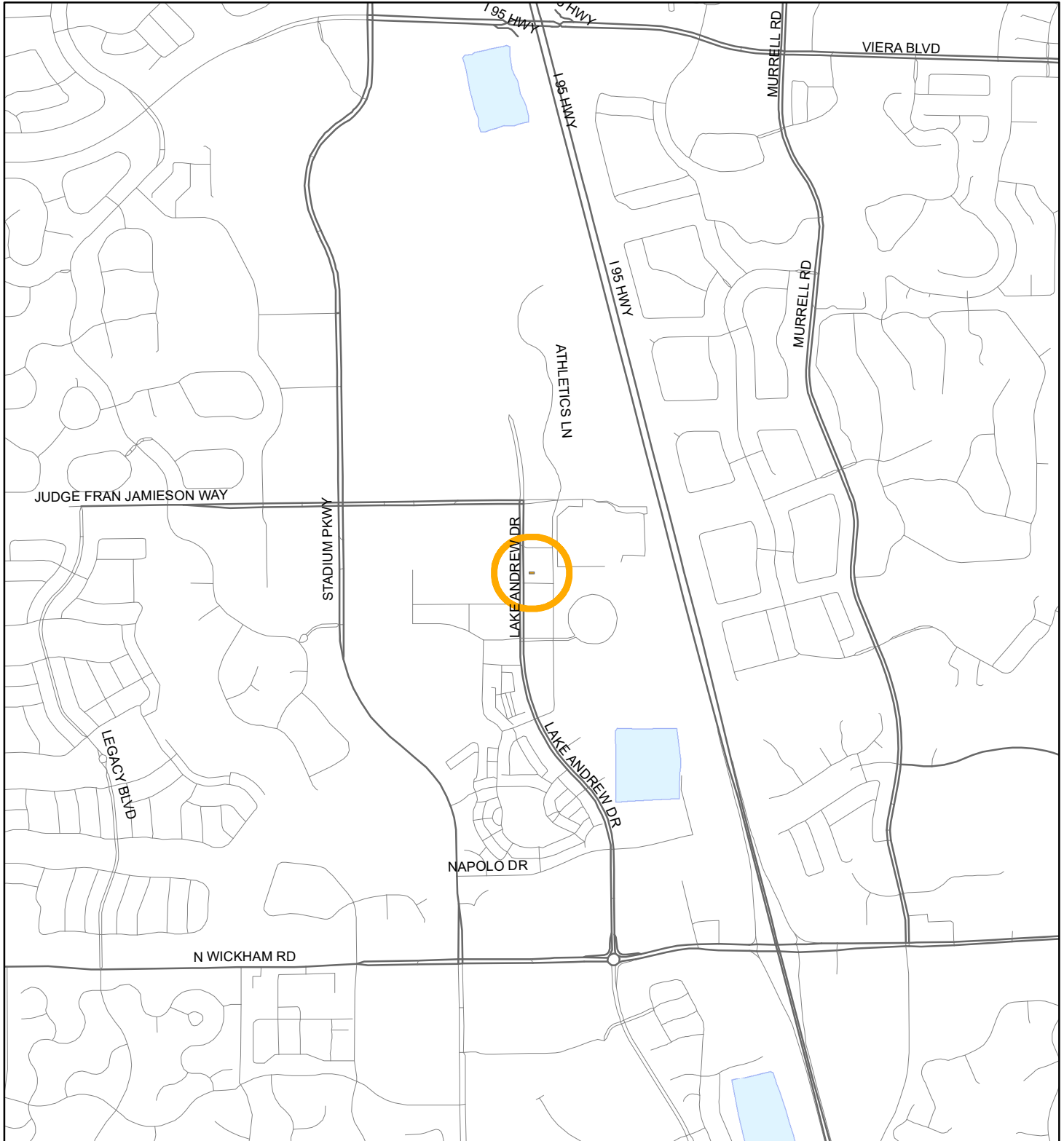


LOCATION MAP

REAGAN & McKINLEY, LLC

19PZ00138



1:24,000 or 1 inch = 2,000 feet

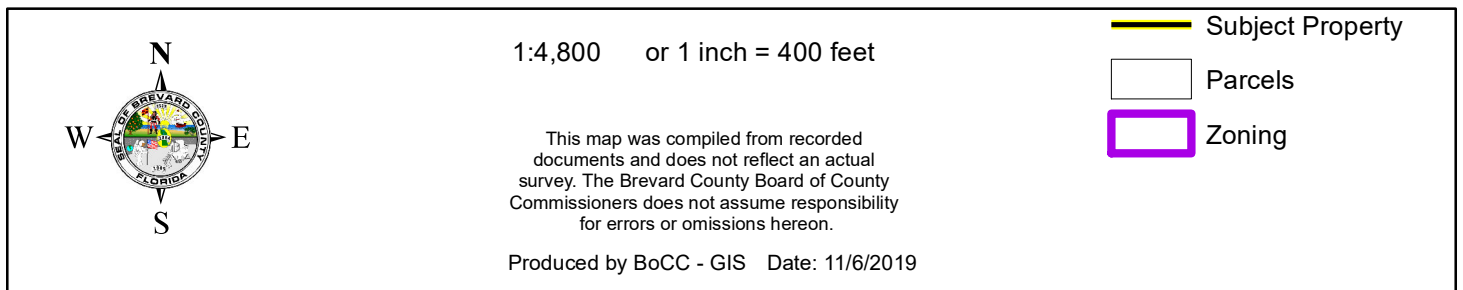
Buffer Distance: 500 feet

This map was compiled from recorded documents and does not reflect an actual survey. The Brevard County Board of County Commissioners does not assume responsibility for errors or omissions hereon.

Produced by BoCC - GIS Date: 11/6/2019

Buffer
Subject Property

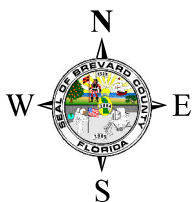
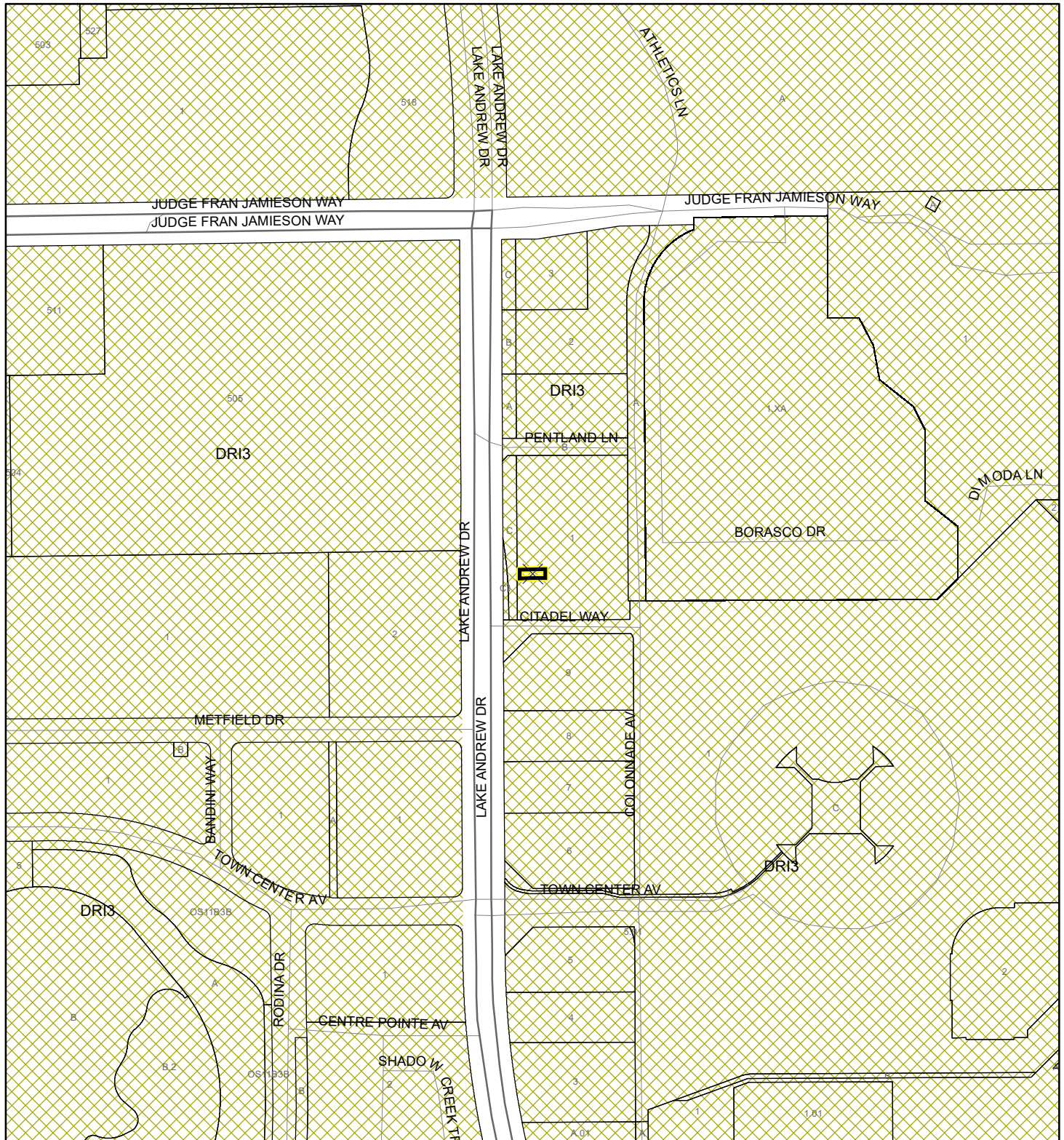
19PZ00138





FUTURE LAND USE MAP

REAGAN & MCKINLEY, LLC

19PZ00138



1:4,800 or 1 inch = 400 feet

 Subject Property
 Parcels

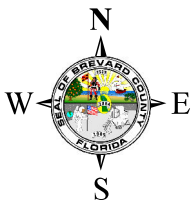
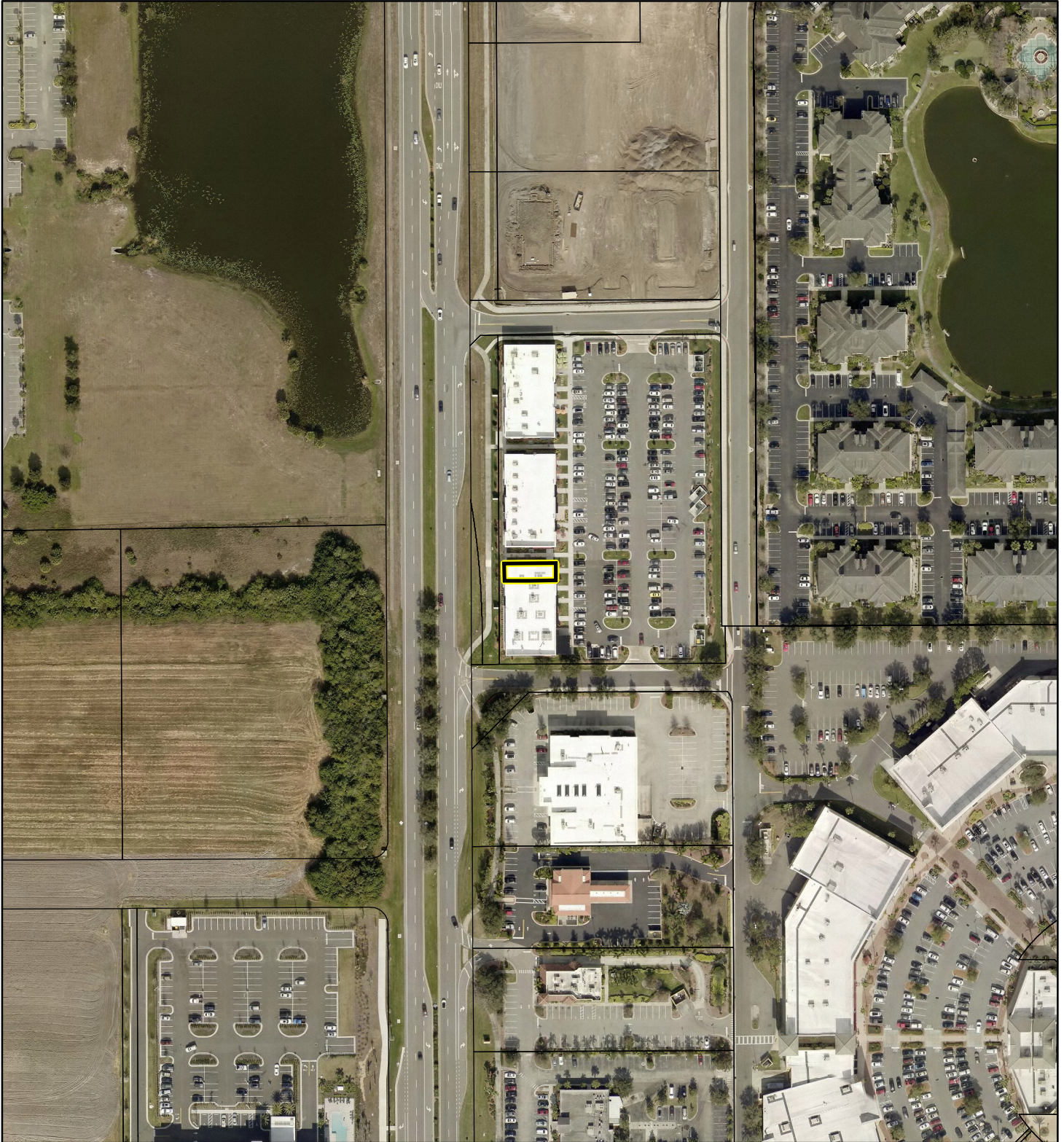
This map was compiled from recorded documents and does not reflect an actual survey. The Brevard County Board of County Commissioners does not assume responsibility for errors or omissions hereon.

Produced by BoCC - GIS Date: 11/6/2019

AERIAL MAP

REAGAN & McKINLEY, LLC

19PZ00138




1:2,400 or 1 inch = 200 feet

PHOTO YEAR: 2019

This map was compiled from recorded documents and does not reflect an actual survey. The Brevard County Board of County Commissioners does not assume responsibility for errors or omissions hereon.

Produced by BoCC - GIS Date: 11/6/2019

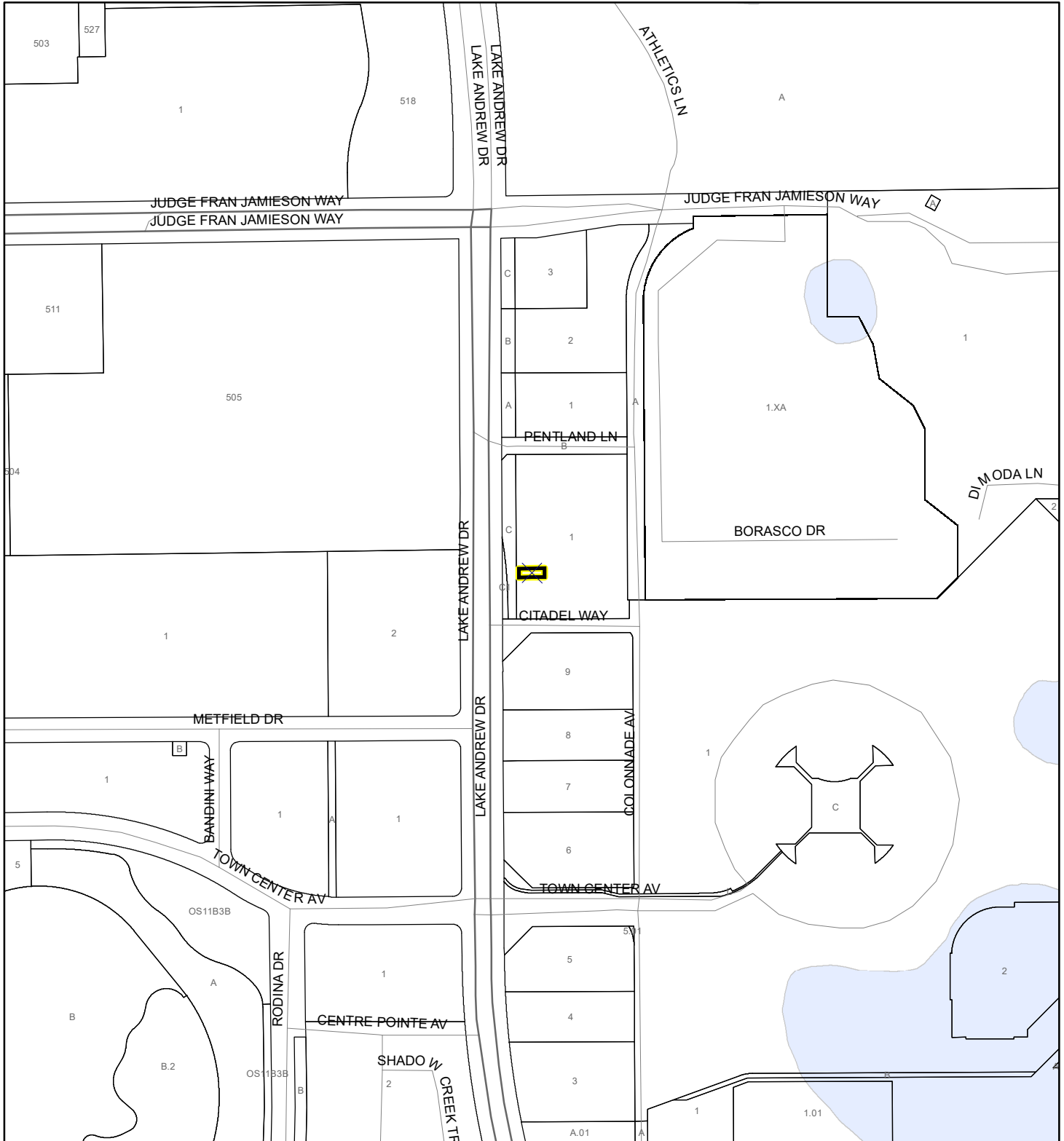
 Subject Property

 Parcels

NWI WETLANDS MAP

REAGAN & McKINLEY, LLC

19PZ00138






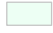

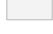




1:4,800 or 1 inch = 400 feet

This map was compiled from recorded documents and does not reflect an actual survey. The Brevard County Board of County Commissioners does not assume responsibility for errors or omissions hereon.

Produced by BoCC - GIS Date: 11/6/2019

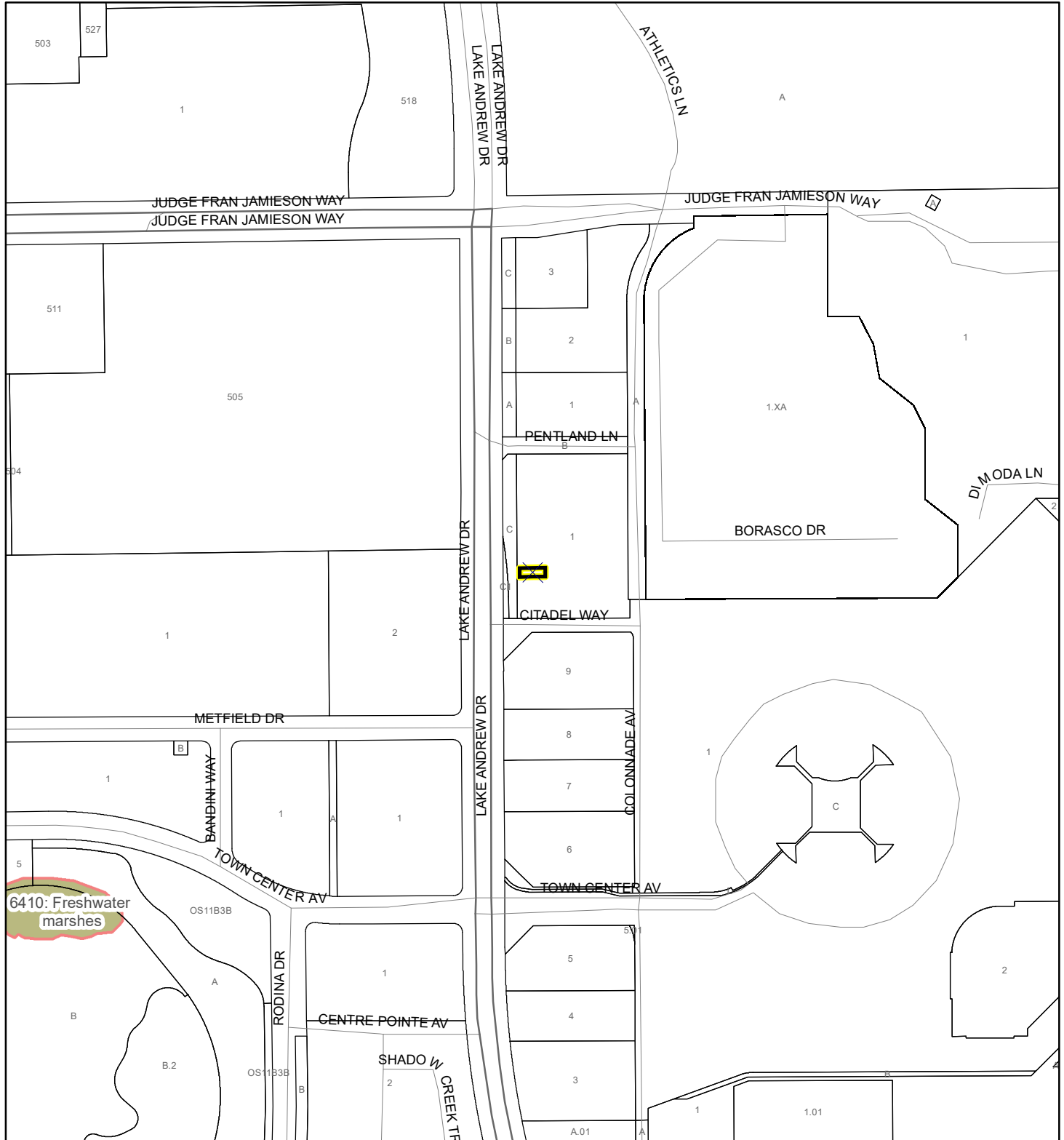
National Wetlands Inventory (NWI)

 Estuarine and Marine Deepwater	 Freshwater Pond
 Estuarine and Marine Wetland	 Lake
 Freshwater Emergent Wetland	 Other
 Freshwater Forested/Shrub Wetland	 Riverine
	 Subject Property
	 Parcels

SJRWMD FLUCCS WETLANDS - 6000 Series MAP

REAGAN & MCKINLEY, LLC

19PZ00138



1:4,800 or 1 inch = 400 feet

This map was compiled from recorded documents and does not reflect an actual survey. The Brevard County Board of County Commissioners does not assume responsibility for errors or omissions hereon.

Produced by BoCC - GIS Date: 11/6/2019

SJRWMD FLUCCS WETLANDS

- Wetland Hardwood Forests - Series 6100
- Wetland Coniferous Forest - Series 6200
- Wetland Forested Mixed - Series 6300
- Vegetated Non-Forested Wetlands - Series 6400
- Non-Vegetated Wetland - Series 6500

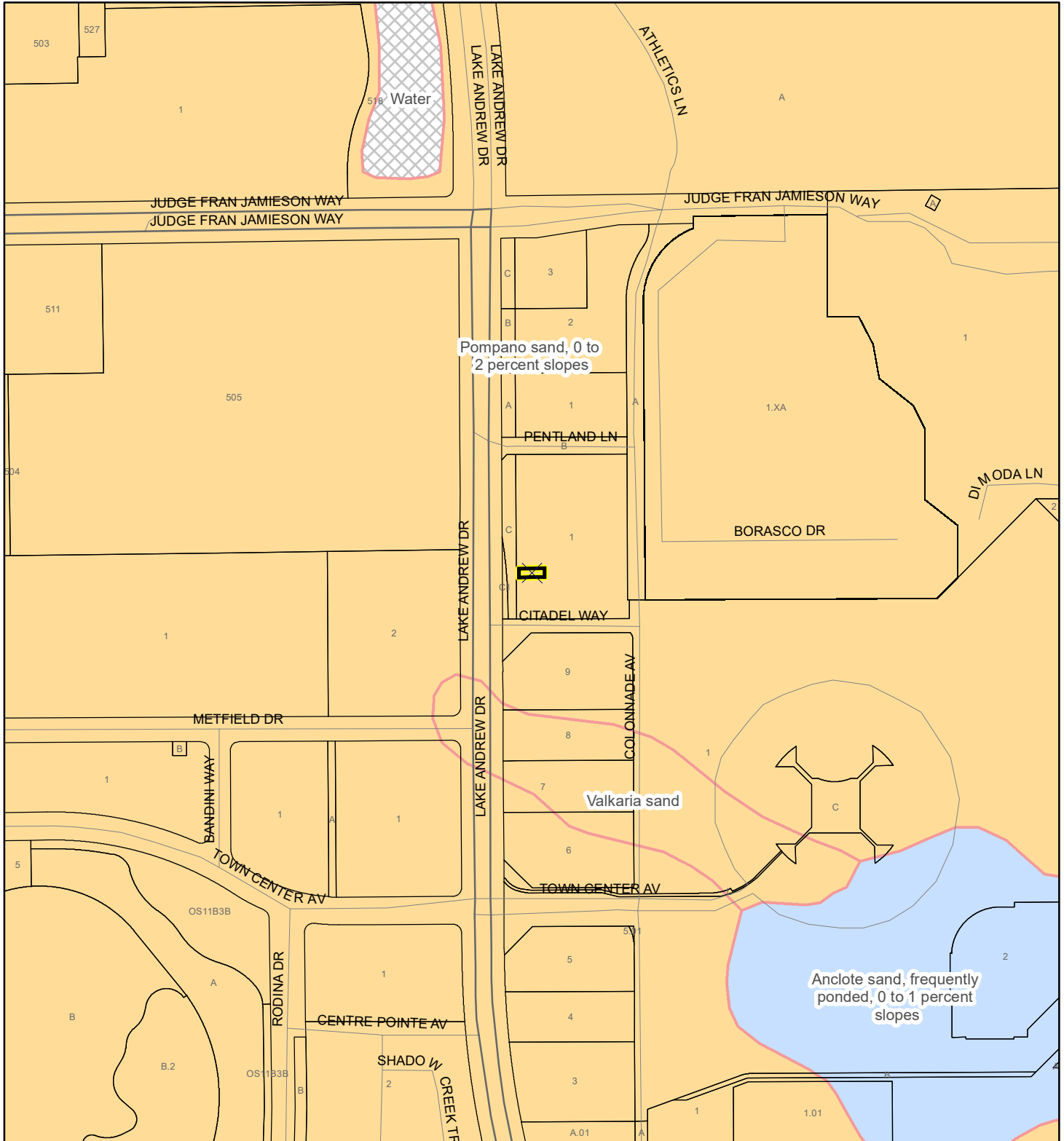
Subject Property

Parcels

USDA SCSSS SOILS MAP

REAGAN & MCKINLEY, LLC

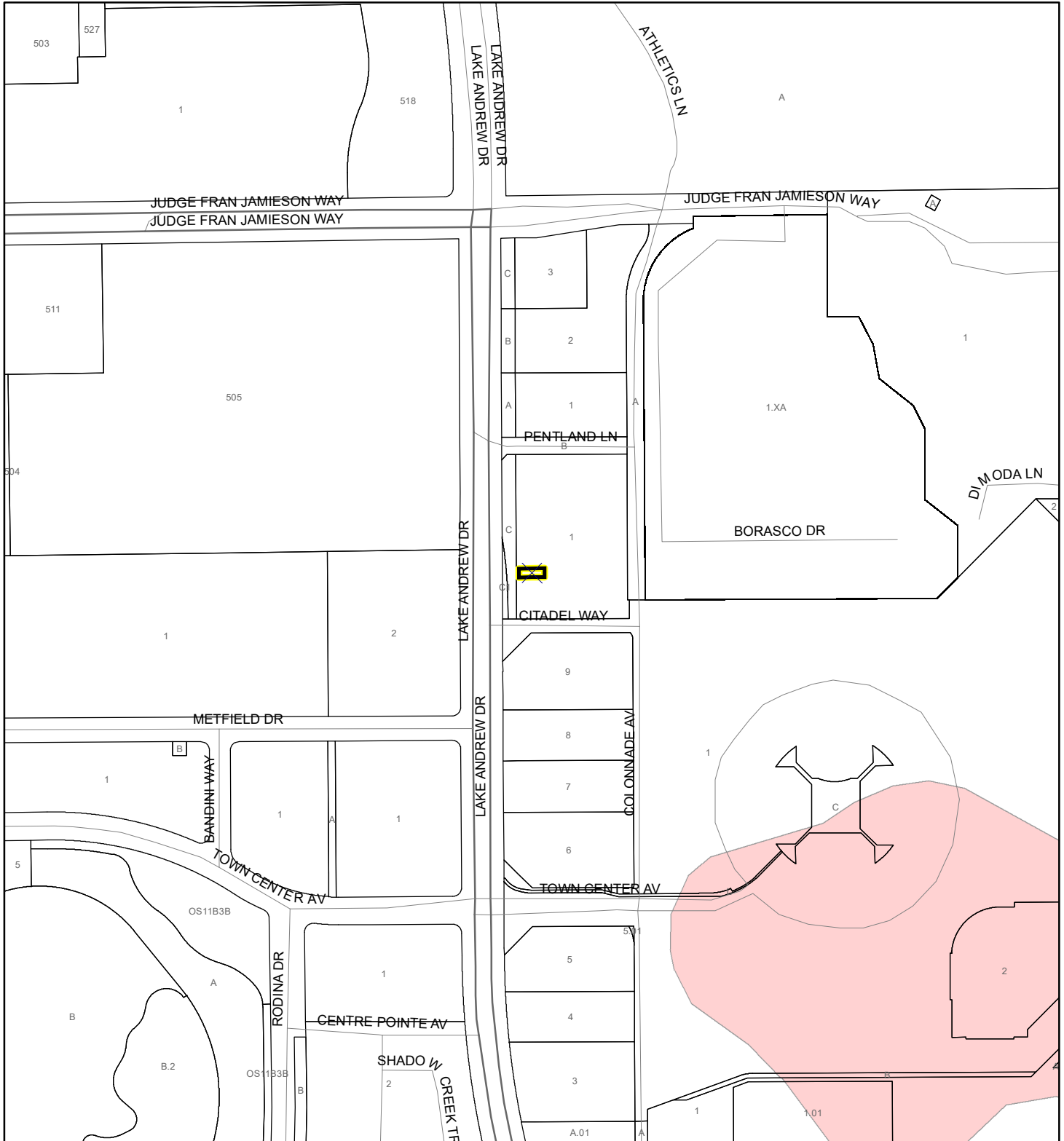
19PZ00138



FEMA FLOOD ZONES MAP

REAGAN & MCKINLEY, LLC

19PZ00138



1:4,800 or 1 inch = 400 feet

This map was compiled from recorded documents and does not reflect an actual survey. The Brevard County Board of County Commissioners does not assume responsibility for errors or omissions hereon.

Produced by BoCC - GIS Date: 11/6/2019

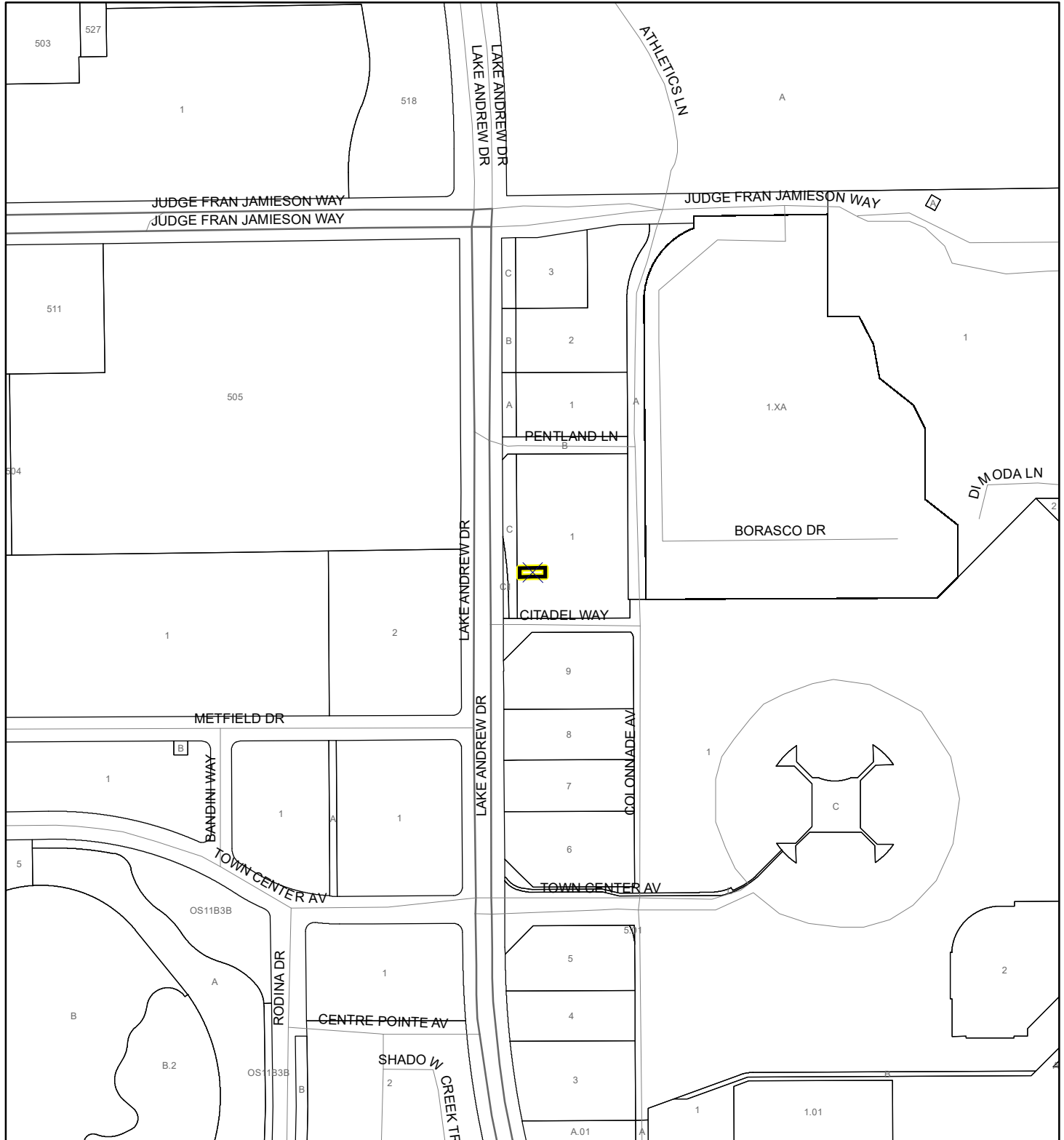
FEMA Flood Zones

A	AO	X
AE	Open Water	X Protected By Levee
AH	VE	
0.2 Percent Annual Chance Flood Hazard		
0.2 Percent Annual Chance Flood Hazard Contained in Channel		
Subject Property		Parcels

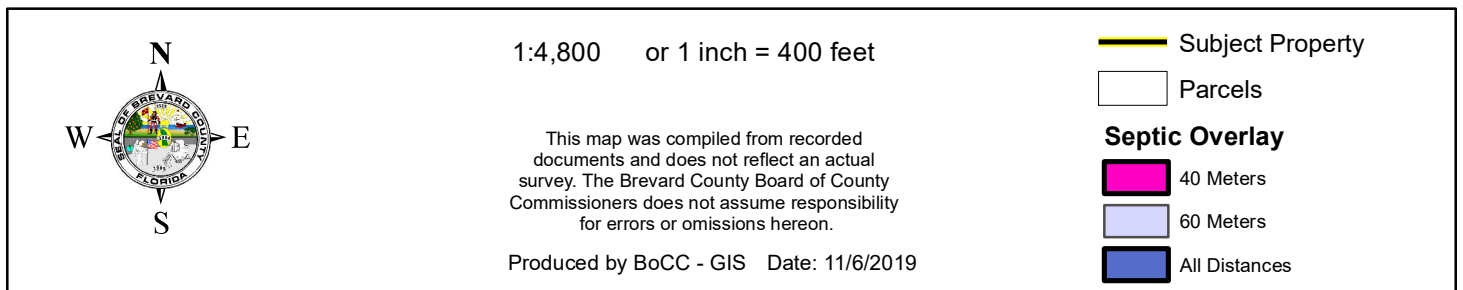
COASTAL HIGH HAZARD AREA MAP

REAGAN & McKINLEY, LLC

19PZ00138



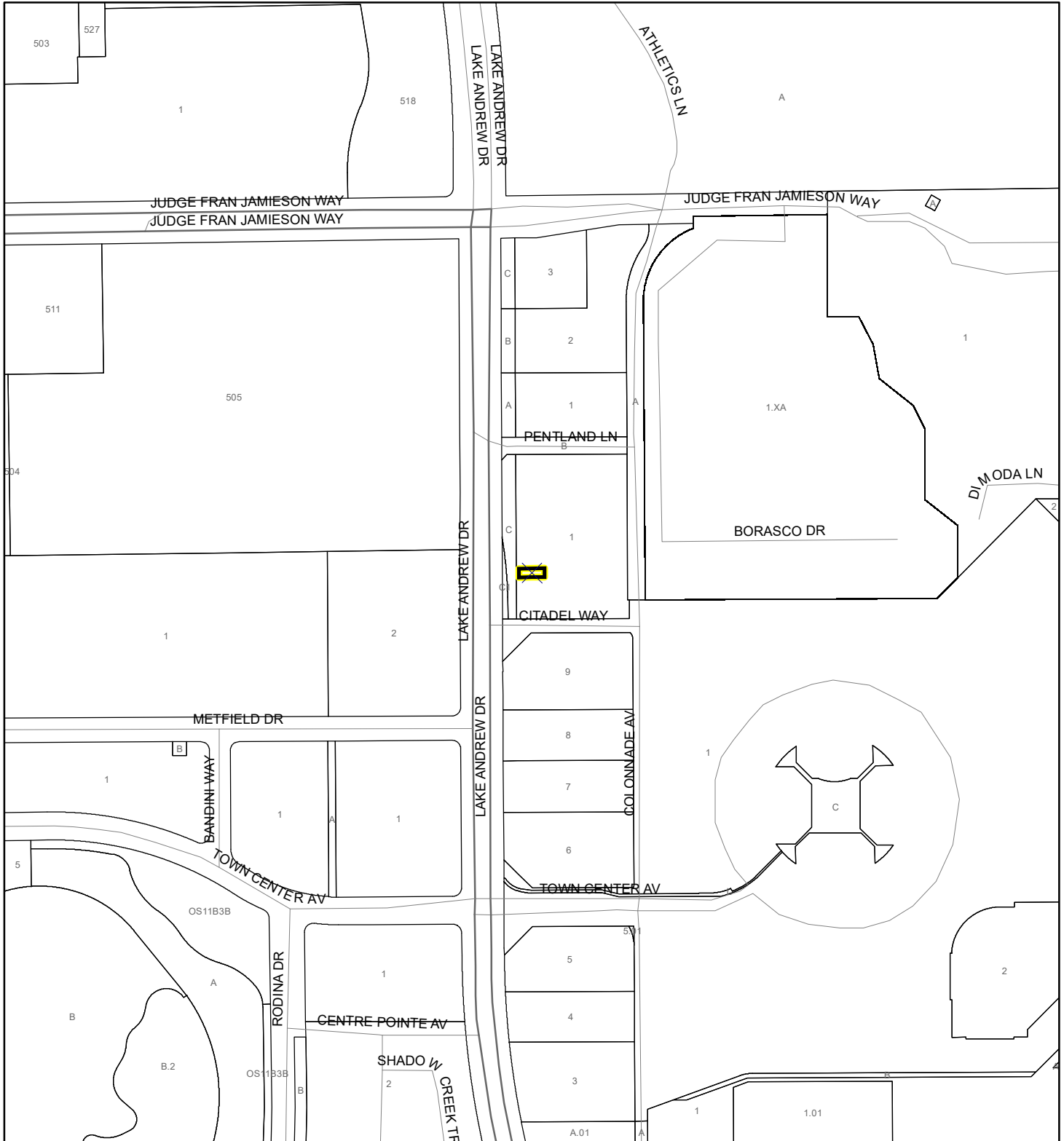
19PZ00138



EAGLE NESTS MAP

REAGAN & McKINLEY, LLC

19PZ00138



1:4,800 or 1 inch = 400 feet

This map was compiled from recorded documents and does not reflect an actual survey. The Brevard County Board of County Commissioners does not assume responsibility for errors or omissions hereon.

Produced by BoCC - GIS Date: 11/6/2019

 Subject Property

 Parcels

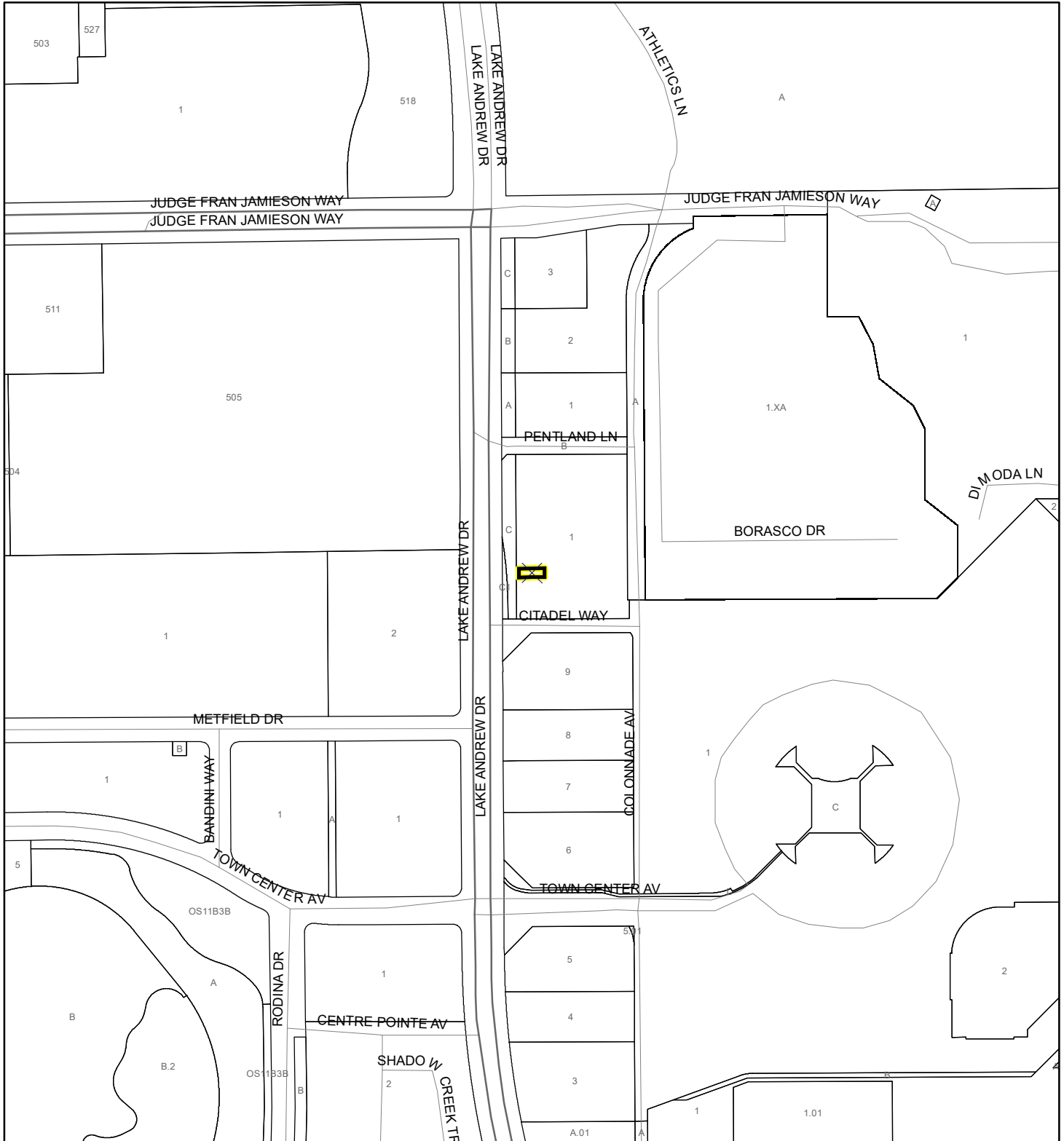


Eagle Nests
FWS 2010

SCRUB JAY OCCUPANCY MAP

REAGAN & McKINLEY, LLC




19PZ00138



1:4,800 or 1 inch = 400 feet

This map was compiled from recorded documents and does not reflect an actual survey. The Brevard County Board of County Commissioners does not assume responsibility for errors or omissions hereon.

Produced by BoCC - GIS Date: 11/6/2019

-  Subject Property
-  Parcels
-  Scrub Jay Occupancy

SJRWMD FLUCCS UPLAND FORESTS - 4000 Series MAP

REAGAN & MCKINLEY, LLC

19PZ00138

