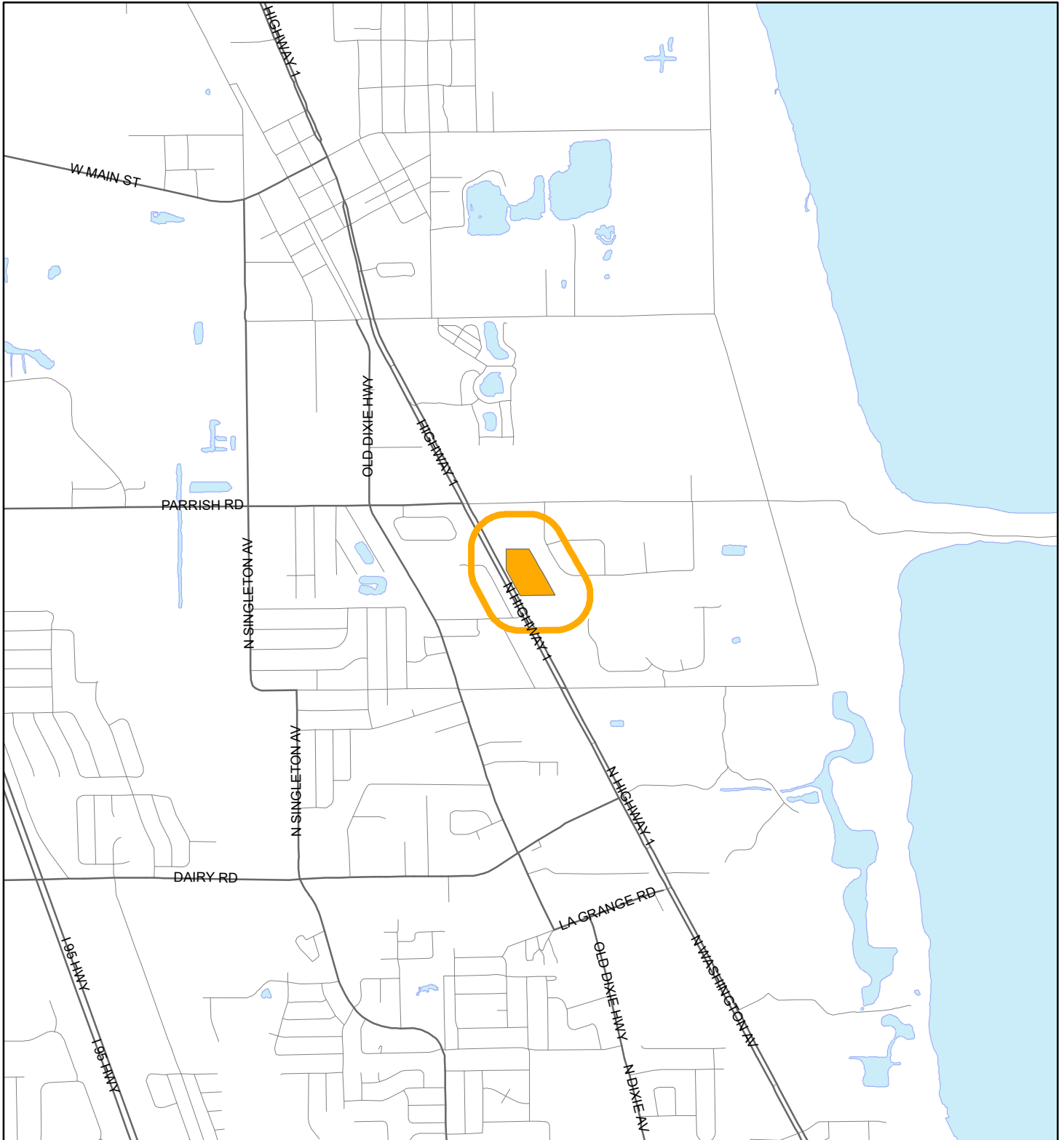


# LOCATION MAP

TURNER, PAUL J  
24Z00008





1:24,000 or 1 inch = 2,000 feet

Buffer Distance: 500 feet

This map was compiled from recorded documents and does not reflect an actual survey. The Brevard County Board of County Commissioners does not assume responsibility for errors or omissions hereon.

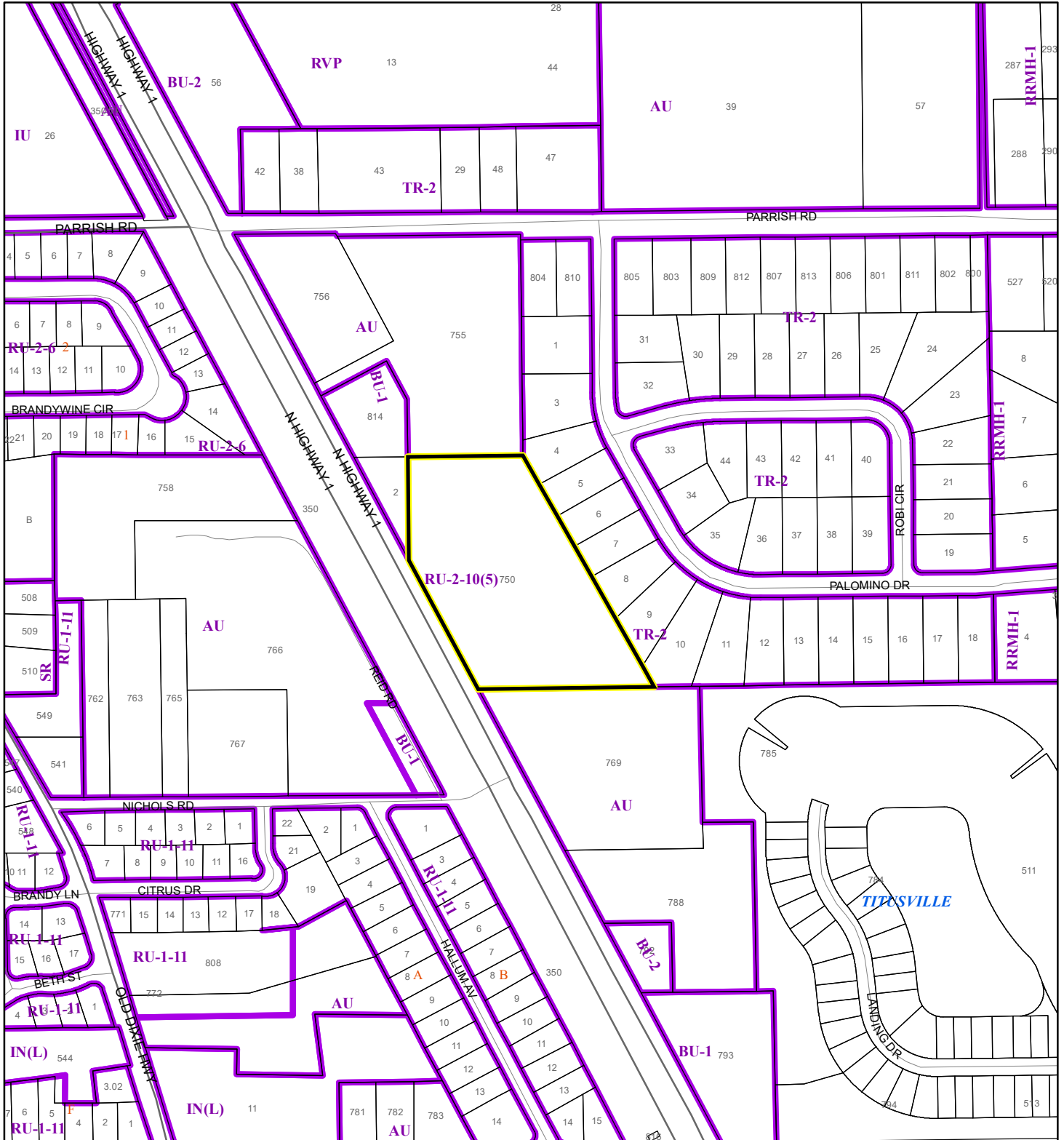
Produced by BoCC - GIS Date: 4/2/2024

-  Buffer
-  Subject Property

# ZONING MAP

TURNER, PAUL J




24Z00008



1:4,800 or 1 inch = 400 feet

This map was compiled from recorded documents and does not reflect an actual survey. The Brevard County Board of County Commissioners does not assume responsibility for errors or omissions hereon.

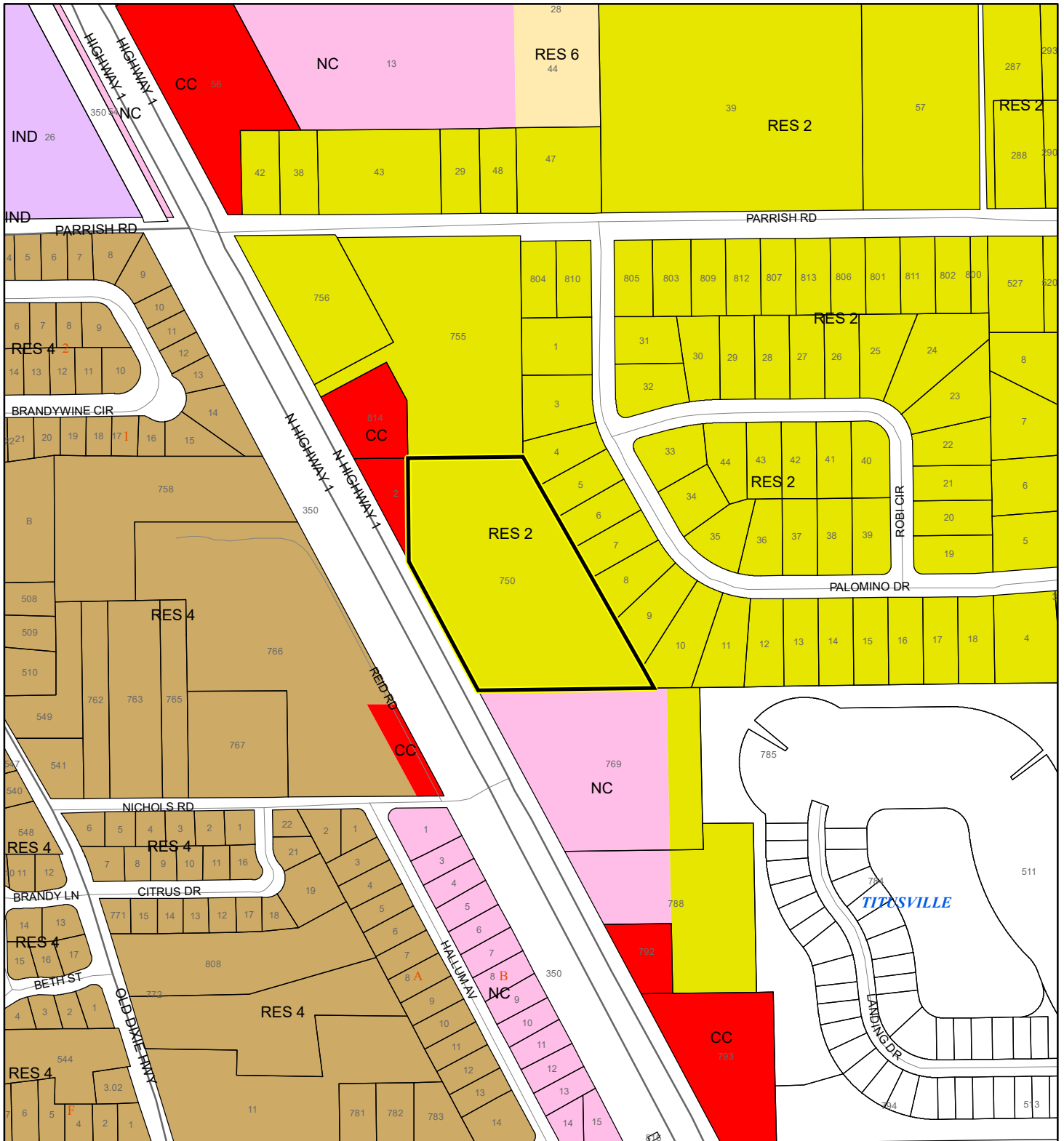
Produced by BoCC - GIS Date: 4/2/2024

-  Subject Property
-  Parcels
-  Zoning

# FUTURE LAND USE MAP

TURNER, PAUL J

24Z00008



1:4,800 or 1 inch = 400 feet

- Subject Property
- Parcels

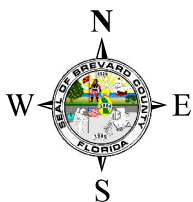
This map was compiled from recorded documents and does not reflect an actual survey. The Brevard County Board of County Commissioners does not assume responsibility for errors or omissions hereon.

Produced by BoCC - GIS Date: 4/2/2024

# AERIAL MAP

TURNER, PAUL J

24Z00008




1:4,800 or 1 inch = 400 feet

PHOTO YEAR: 2023

This map was compiled from recorded documents and does not reflect an actual survey. The Brevard County Board of County Commissioners does not assume responsibility for errors or omissions hereon.

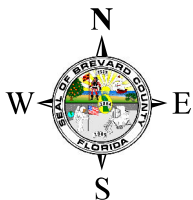
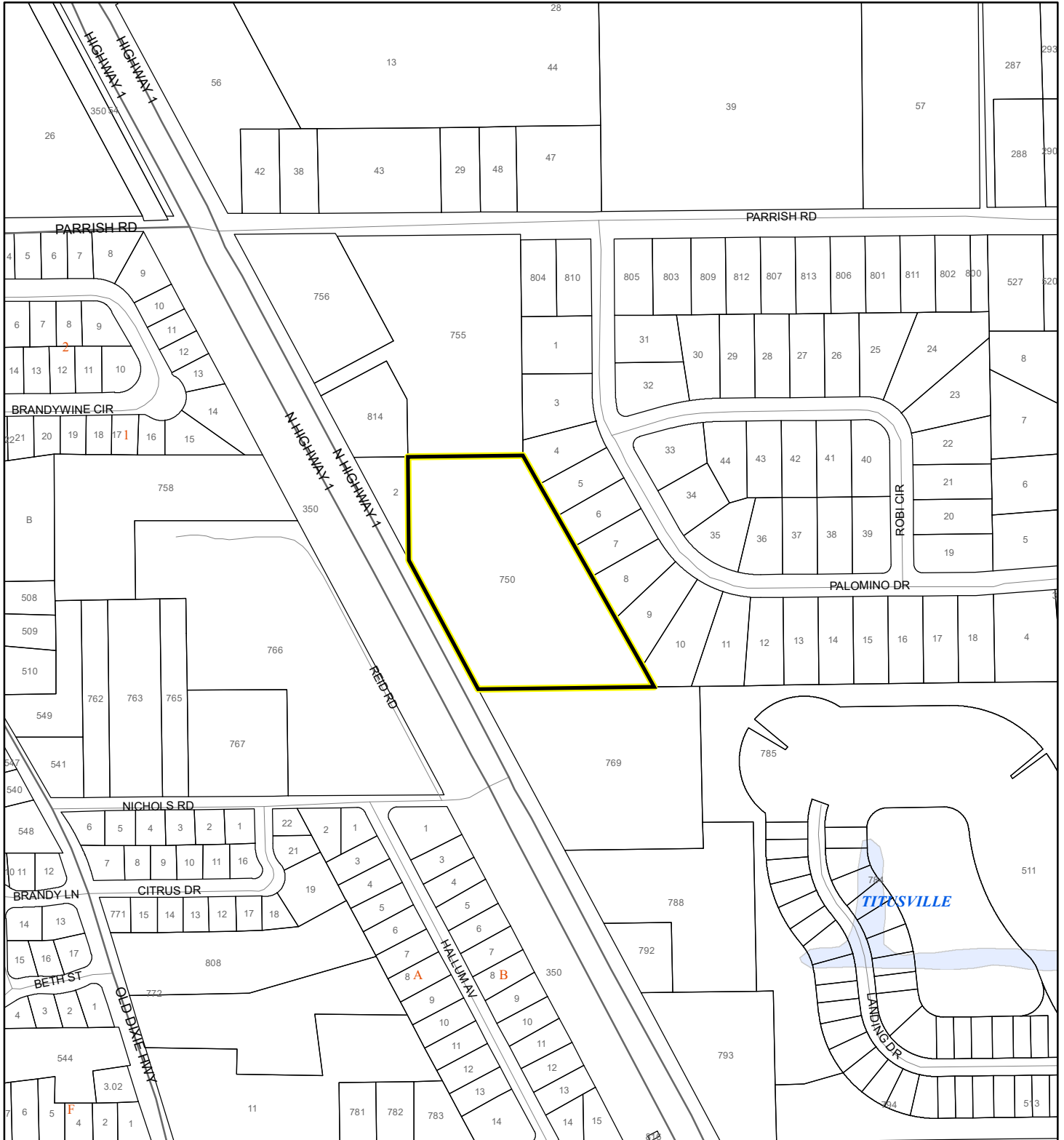
Produced by BoCC - GIS Date: 4/2/2024

 Subject Property

 Parcels

# NWI WETLANDS MAP

TURNER, PAUL J  
24Z00008






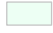

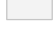

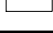


1:4,800 or 1 inch = 400 feet

This map was compiled from recorded documents and does not reflect an actual survey. The Brevard County Board of County Commissioners does not assume responsibility for errors or omissions hereon.

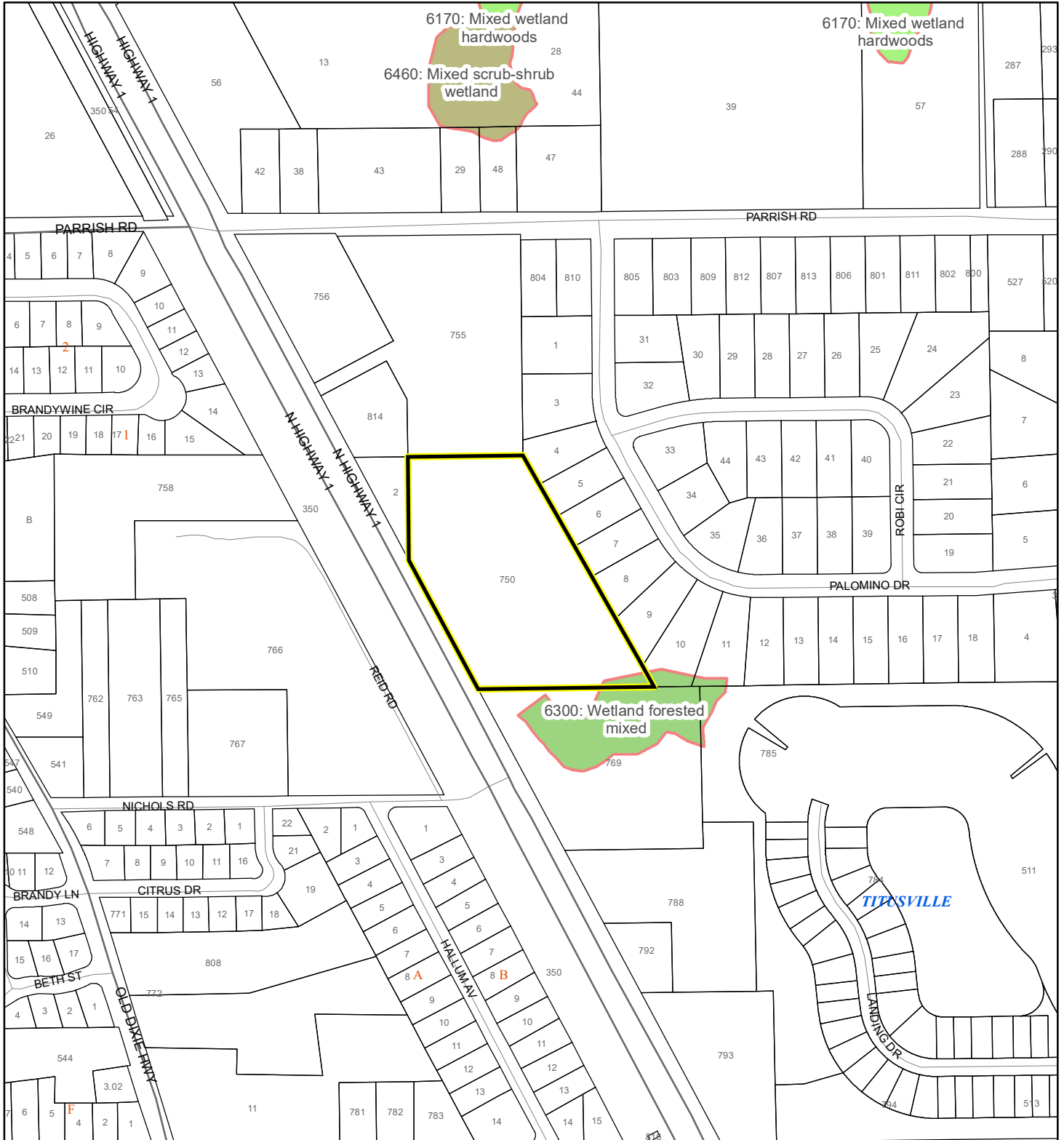
Produced by BoCC - GIS Date: 4/2/2024

### National Wetlands Inventory (NWI)

- |  |  |
|--|--|
|  Estuarine and Marine Deepwater    |  Freshwater Pond  |
|  Estuarine and Marine Wetland      |  Lake             |
|  Freshwater Emergent Wetland       |  Other            |
|  Freshwater Forested/Shrub Wetland |  Riverine         |
|  |  Subject Property |
|  |  Parcels          |

# SJRWMD FLUCCS WETLANDS - 6000 Series MAP

TURNER, PAUL J  
24Z00008



1:4,800 or 1 inch = 400 feet

**SJRWMD FLUCCS WETLANDS**

This map was compiled from recorded documents and does not reflect an actual survey. The Brevard County Board of County Commissioners does not assume responsibility for errors or omissions hereon.

- Wetland Hardwood Forests - Series 6100
- Wetland Coniferous Forest - Series 6200
- Wetland Forested Mixed - Series 6300
- Vegetated Non-Forested Wetlands - Series 6400
- Non-Vegetated Wetland - Series 6500

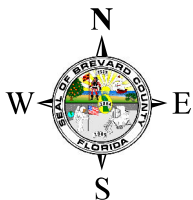
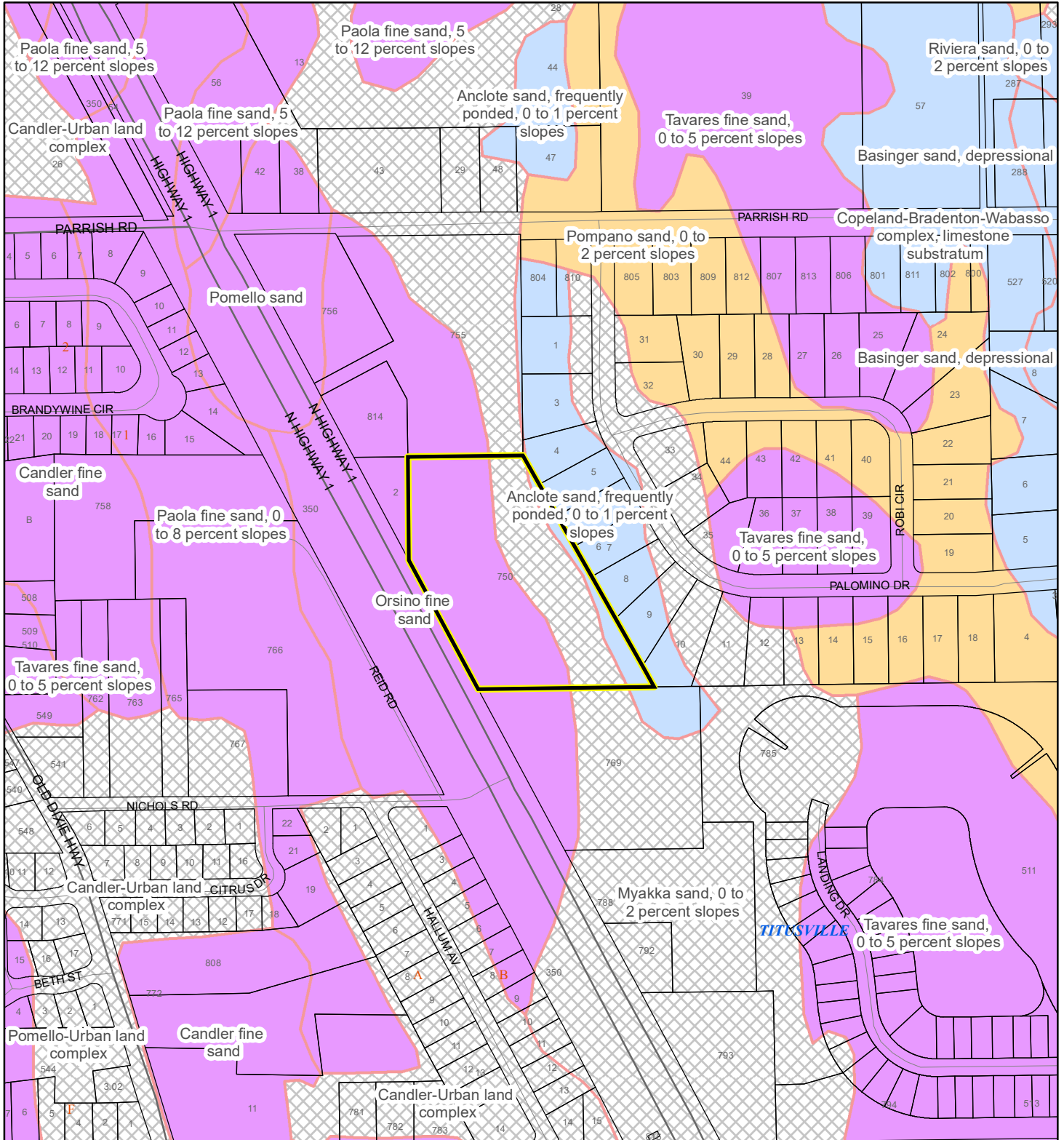
Produced by BoCC - GIS Date: 4/2/2024

Subject Property     Parcels

# USDA SCSSS SOILS MAP

TURNER, PAUL J

24Z00008



1:4,800 or 1 inch = 400 feet

This map was compiled from recorded documents and does not reflect an actual survey. The Brevard County Board of County Commissioners does not assume responsibility for errors or omissions hereon.

Produced by BoCC - GIS Date: 4/2/2024

## USDA SCSSS Soils

 Aquifer and Hydric

 Aquifer

 Hydric

 None

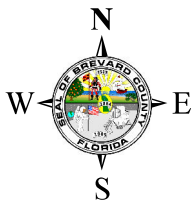
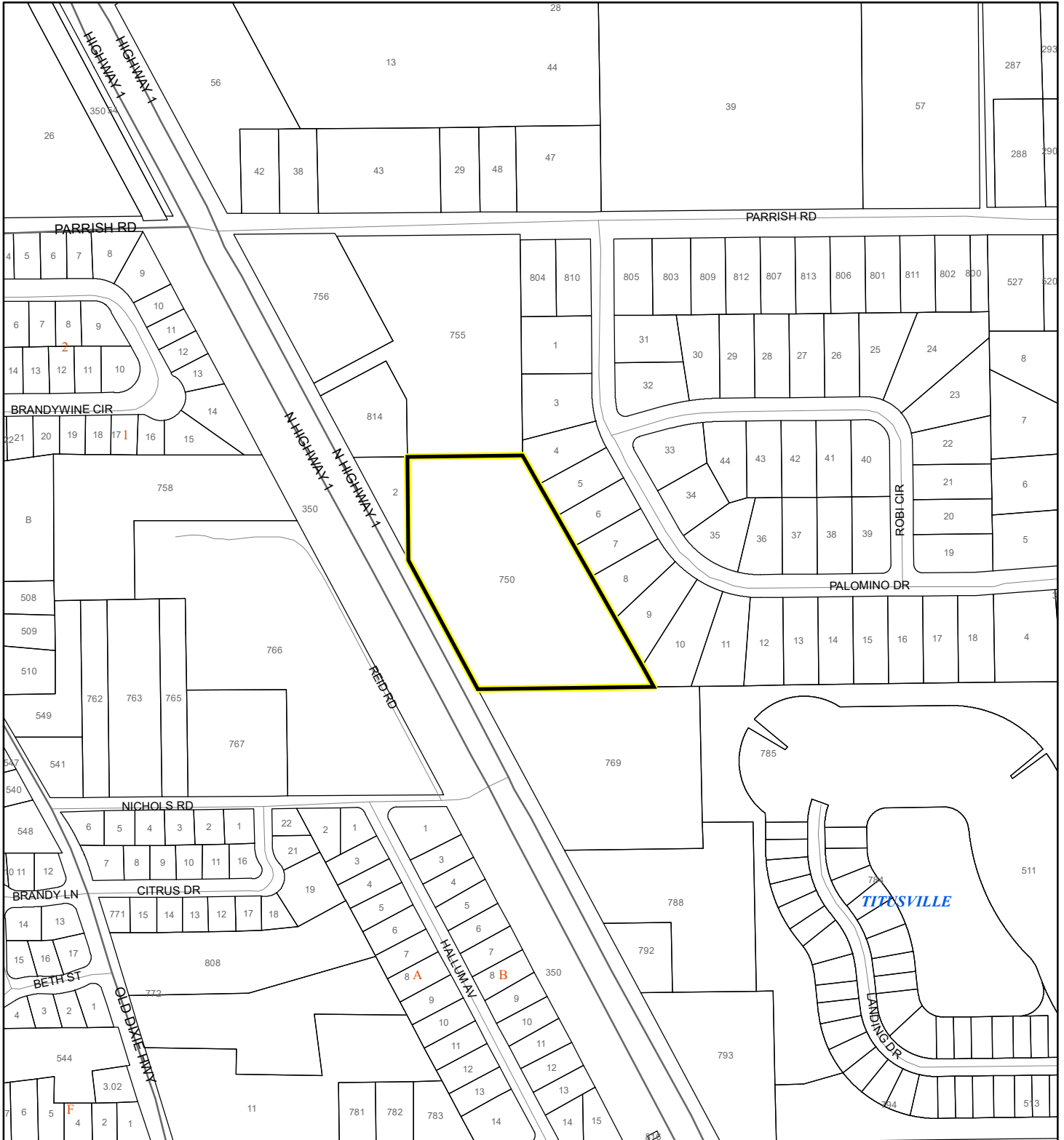
 Subject Property

 Parcels

# FEMA FLOOD ZONES MAP

TURNER, PAUL J

24Z00008



1:4,800 or 1 inch = 400 feet

This map was compiled from recorded documents and does not reflect an actual survey. The Brevard County Board of County Commissioners does not assume responsibility for errors or omissions hereon.

Produced by BoCC - GIS Date: 4/2/2024

### FEMA Flood Zones

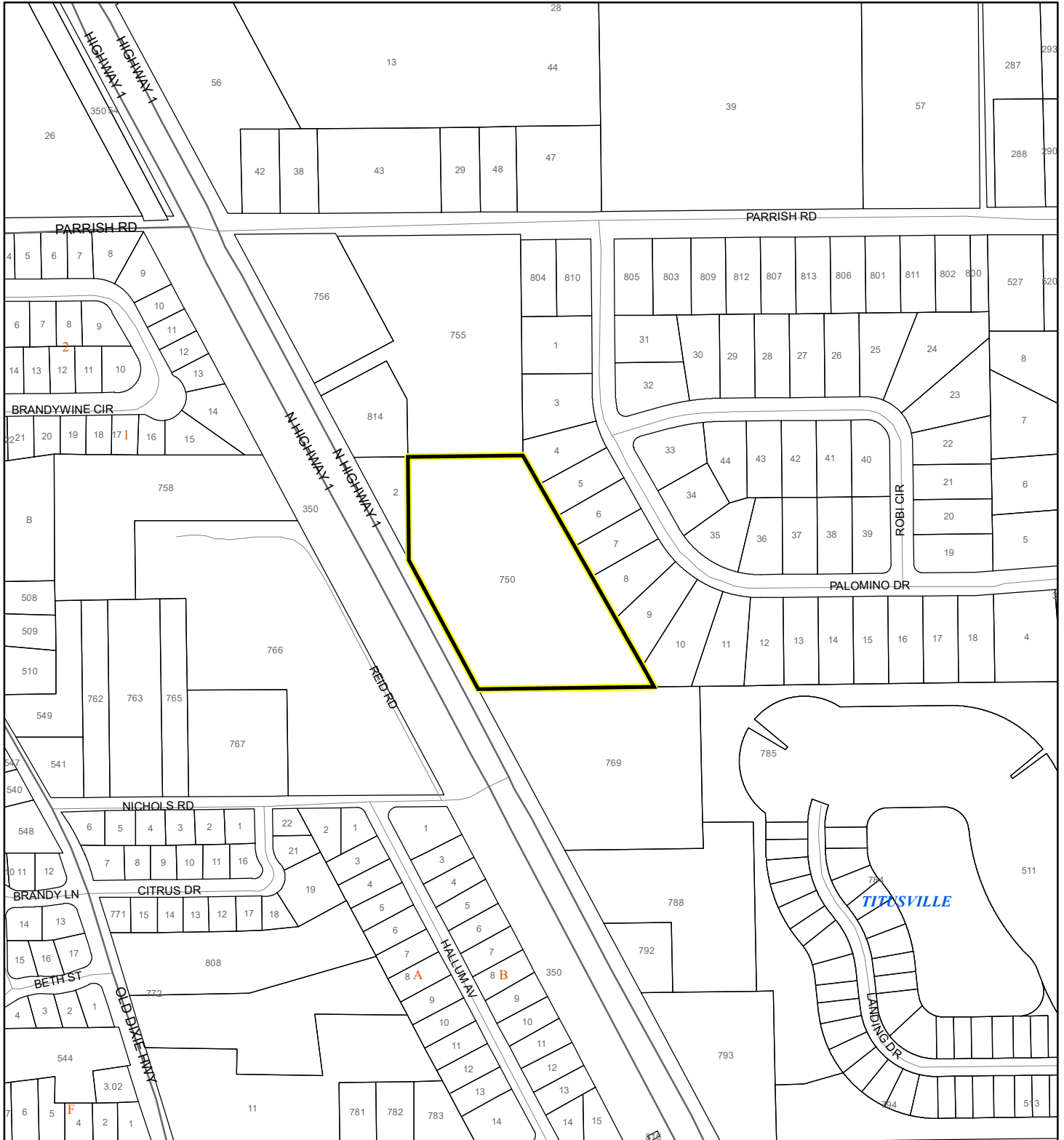
- |                  |            |   |
|------------------|------------|---|
| A                | AO         | X |
| AE               | Open Water |   |
| AH               | VE         |   |
| Subject Property | Parcels    |   |



# COASTAL HIGH HAZARD AREA MAP

TURNER, PAUL J

24Z00008



1:4,800 or 1 inch = 400 feet

This map was compiled from recorded documents and does not reflect an actual survey. The Brevard County Board of County Commissioners does not assume responsibility for errors or omissions hereon.

Produced by BoCC - GIS Date: 4/2/2024

 Subject Property

 Parcels

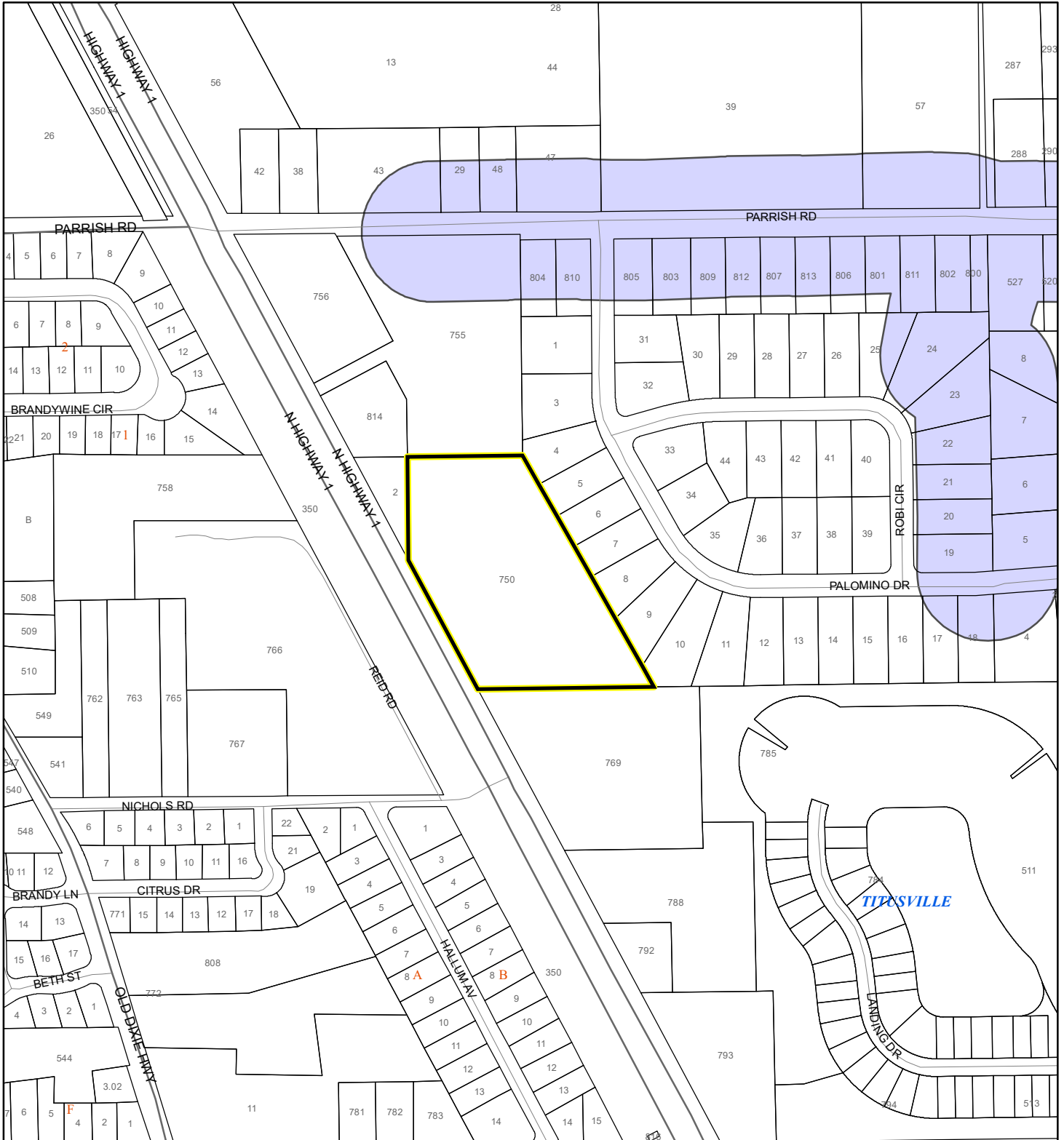
**Coastal High Hazard Area**

 SurgeZoneCat1

# INDIAN RIVER LAGOON SEPTIC OVERLAY MAP

TURNER, PAUL J

24Z00008



1:4,800 or 1 inch = 400 feet

This map was compiled from recorded documents and does not reflect an actual survey. The Brevard County Board of County Commissioners does not assume responsibility for errors or omissions hereon.

Produced by BoCC - GIS Date: 4/2/2024

 Subject Property

 Parcels

**Septic Overlay**

 40 Meters

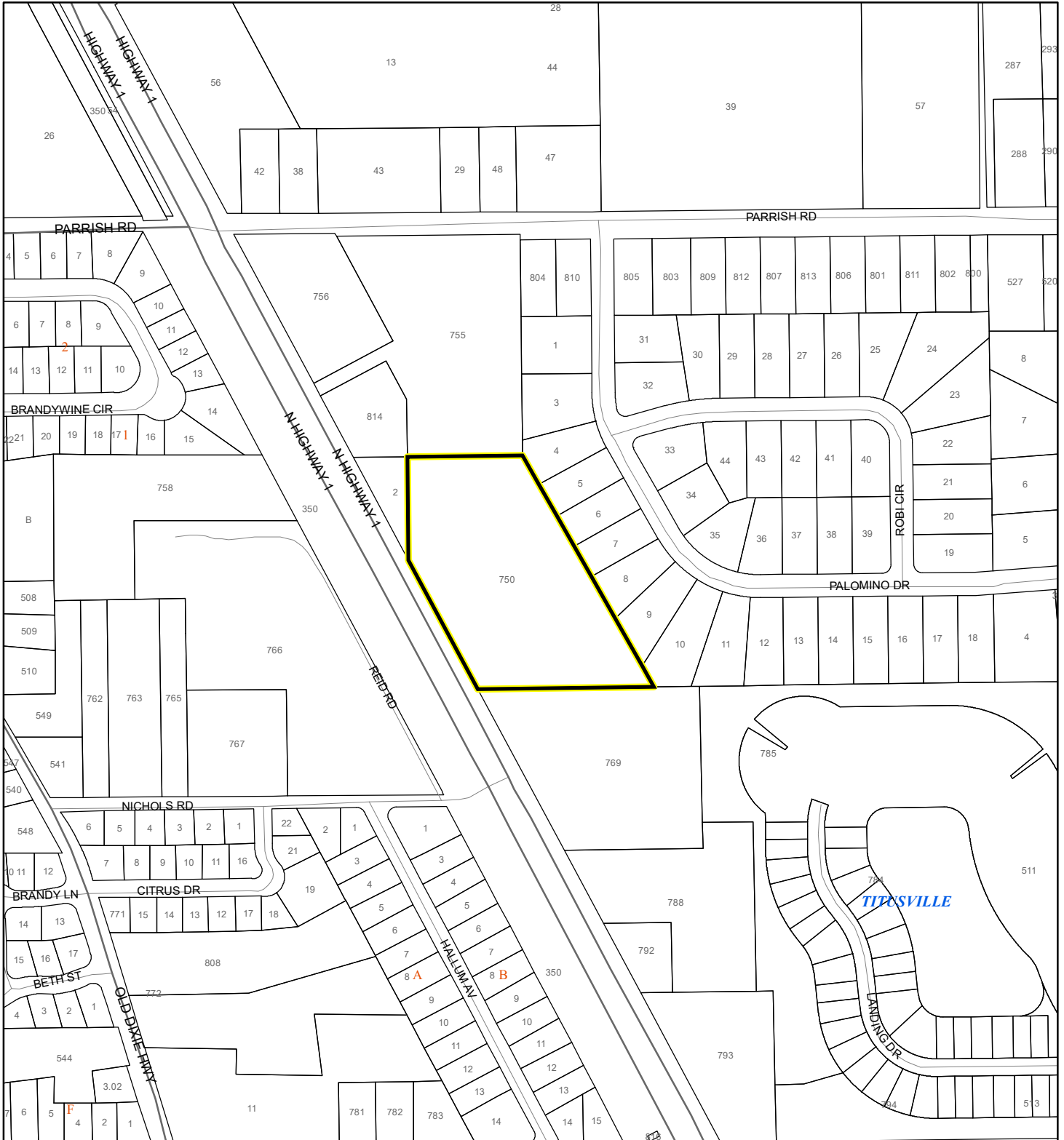
 60 Meters

 All Distances

# EAGLE NESTS MAP

TURNER, PAUL J

24Z00008



1:4,800 or 1 inch = 400 feet

 Subject Property

 Parcels

 Eagle Nests  
FWS

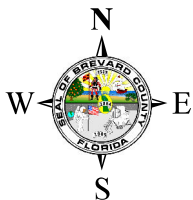
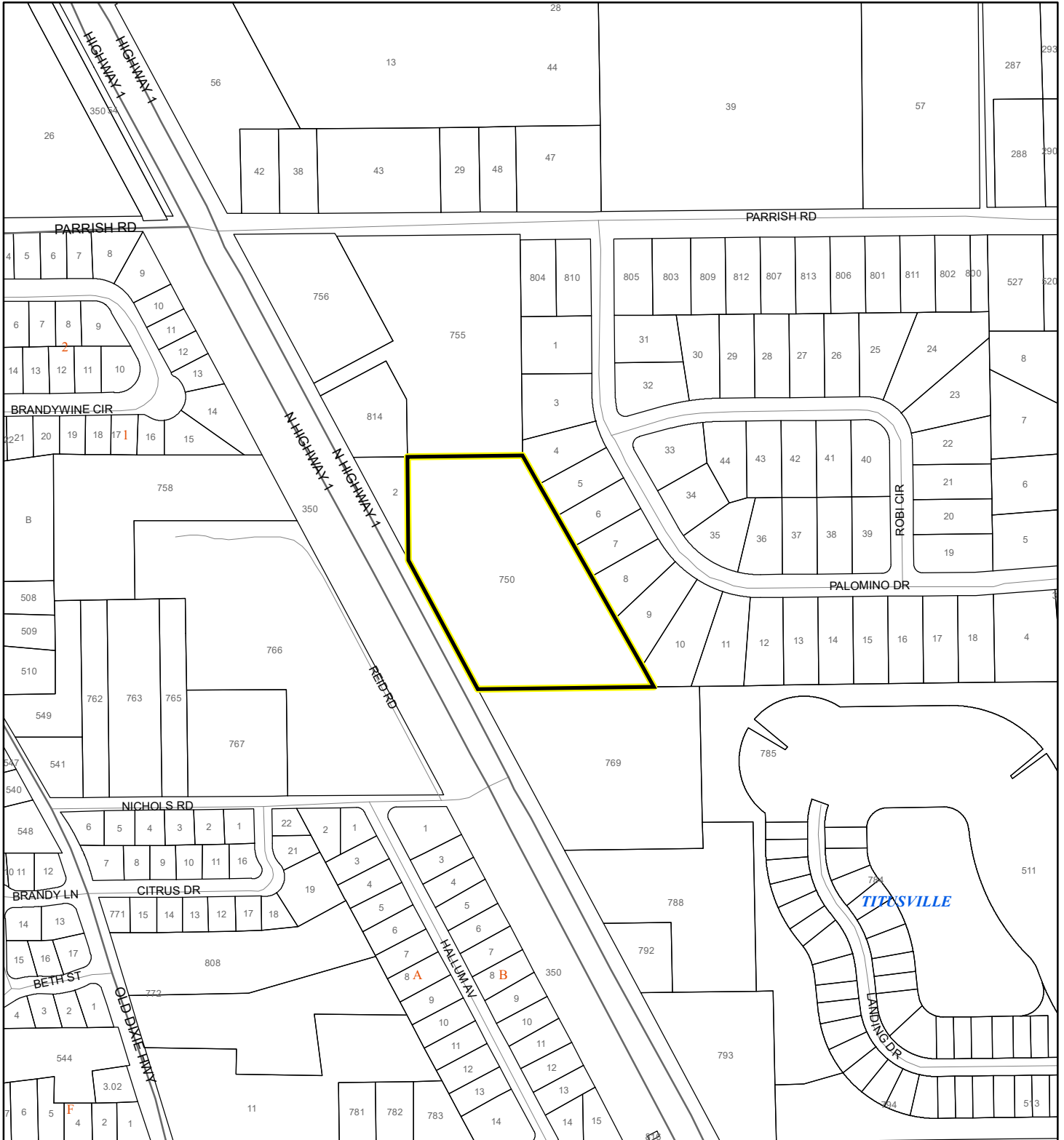
This map was compiled from recorded documents and does not reflect an actual survey. The Brevard County Board of County Commissioners does not assume responsibility for errors or omissions hereon.

Produced by BoCC - GIS Date: 4/2/2024

# SCRUB JAY OCCUPANCY MAP

TURNER, PAUL J




24Z00008



1:4,800 or 1 inch = 400 feet

This map was compiled from recorded documents and does not reflect an actual survey. The Brevard County Board of County Commissioners does not assume responsibility for errors or omissions hereon.

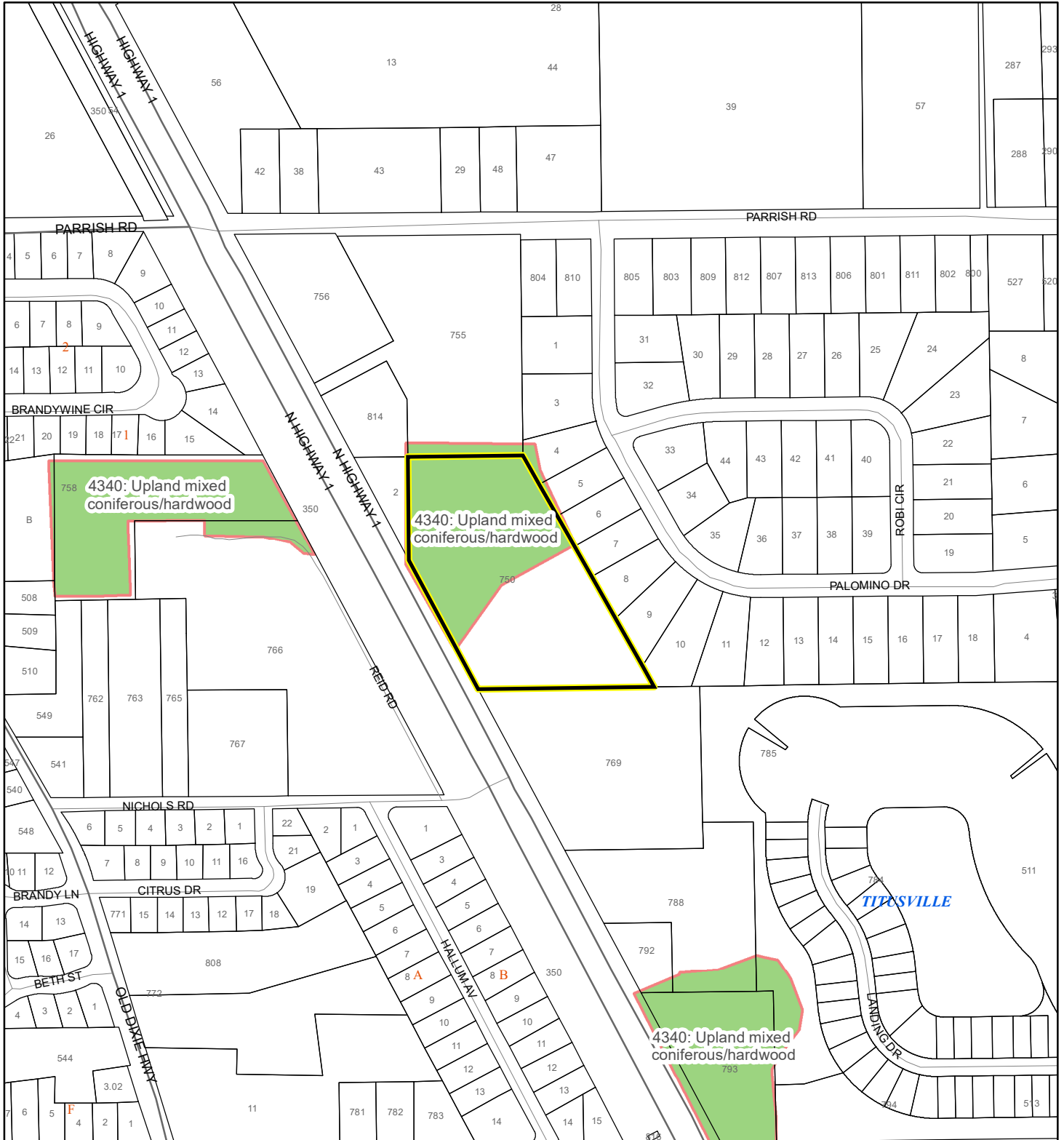
Produced by BoCC - GIS Date: 4/2/2024

-  Subject Property
-  Parcels
-  Scrub Jay Occupancy

# SJRWMD FLUCCS UPLAND FORESTS - 4000 Series MAP

TURNER, PAUL J

24Z00008



1:4,800 or 1 inch = 400 feet

This map was compiled from recorded documents and does not reflect an actual survey. The Brevard County Board of County Commissioners does not assume responsibility for errors or omissions hereon.

Produced by BoCC - GIS Date: 4/2/2024

## SJRWMD FLUCCS Upland Forests

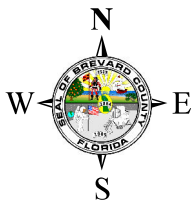
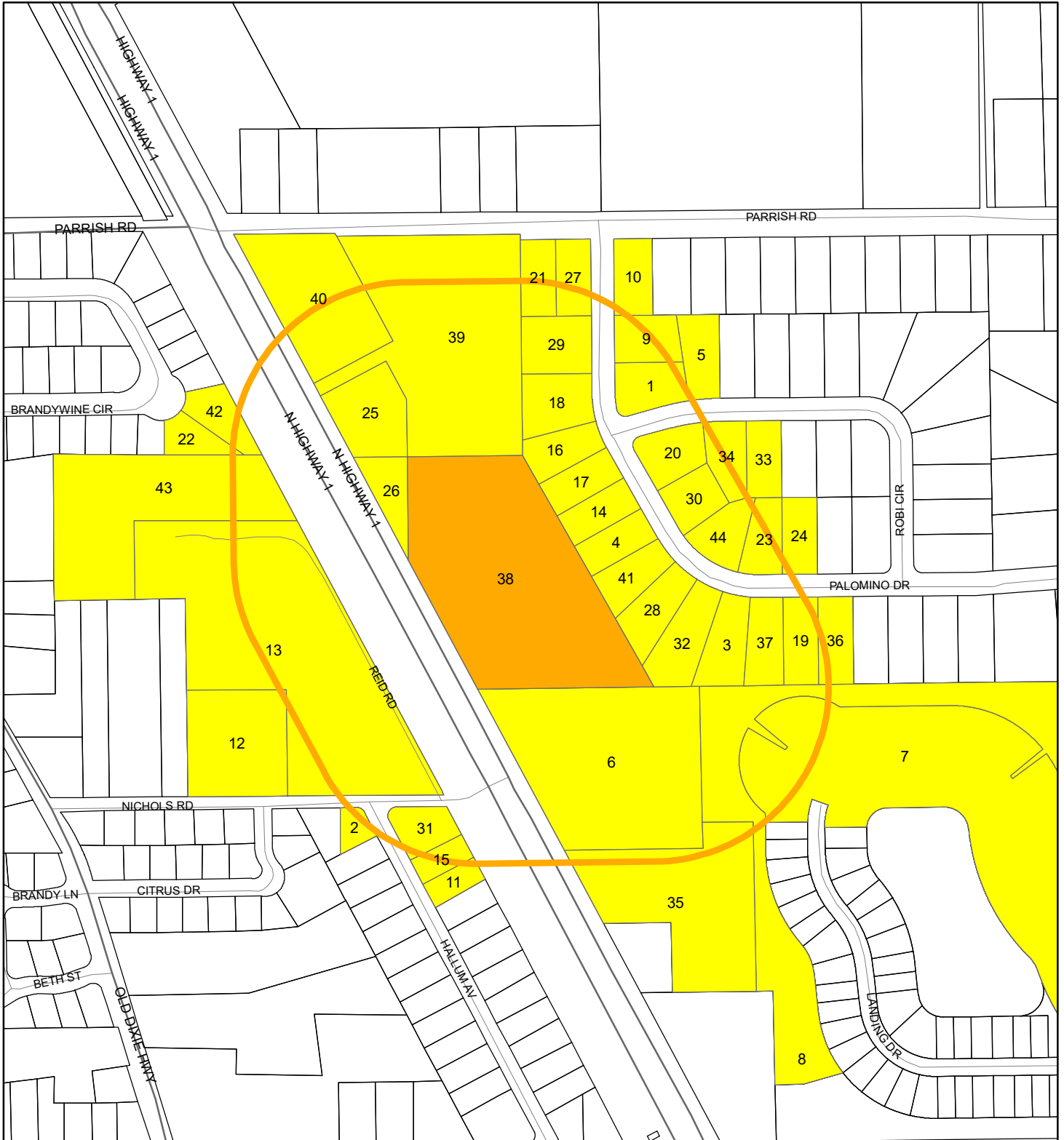
- Upland Coniferous Forest - 4100 Series
- Upland Hardwood Forest - 4200 Series
- Upland Mixed Forest - 4300 Series
- Tree Plantations - 4400 Series

Subject Property

Parcels

# RADIUS MAP

TURNER, PAUL J  
24Z00008




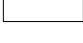


1:4,800 or 1 inch = 400 feet

Buffer Distance: 500 feet

This map was compiled from recorded documents and does not reflect an actual survey. The Brevard County Board of County Commissioners does not assume responsibility for errors or omissions hereon.

Produced by BoCC - GIS Date: 4/2/2024

-  Buffer
-  Subject Property
-  Notify Property
-  Parcels