

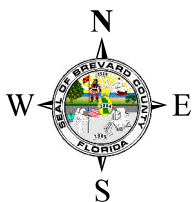
LOCATION MAP

HQW HOMEOWNERS ASSOCIATION INC

26Z00005



Sources: Esri, HERE, Garmin, USGS, Intermap, INCREMENT P, NRCan, Esri Japan, METI, Esri China (Hong Kong), Esri Korea, Esri (Thailand), NGCC, (c) OpenStreetMap contributors, and the GIS User Community





1:24,000 or 1 inch = 2,000 feet

Buffer Distance: 500 feet

This map was compiled from recorded documents and does not reflect an actual survey. The Brevard County Board of County Commissioners does not assume responsibility for errors or omissions hereon.

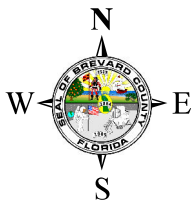
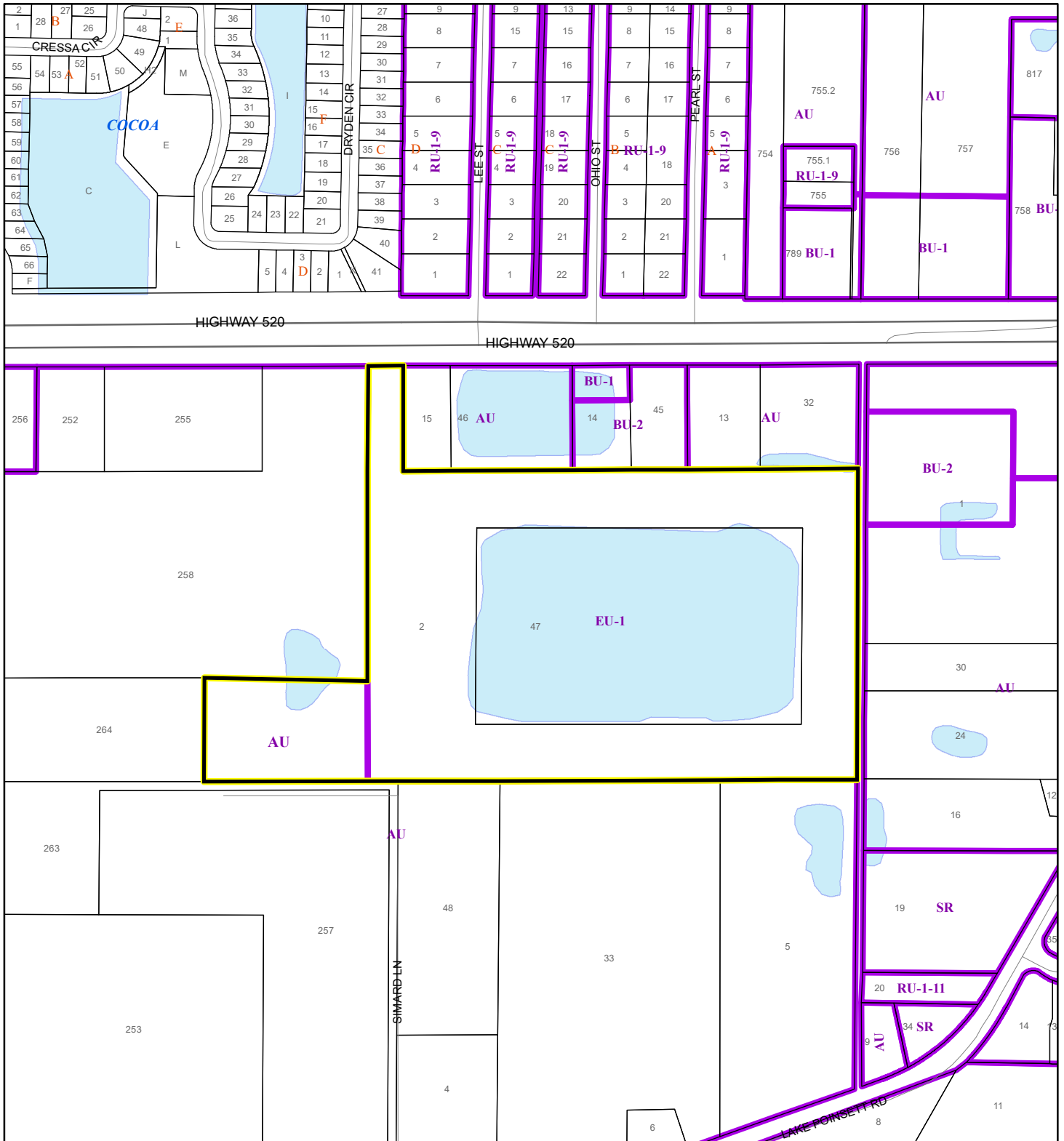
Produced by BoCC - GIS Date: 2/6/2026

-  Buffer
-  Subject Property


ZONING MAP

HQW HOMEOWNERS ASSOCIATION INC

26Z00005



1:4,800 or 1 inch = 400 feet

 Subject Property

 Parcels

 Zoning

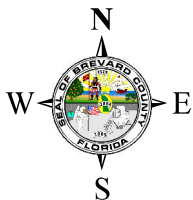
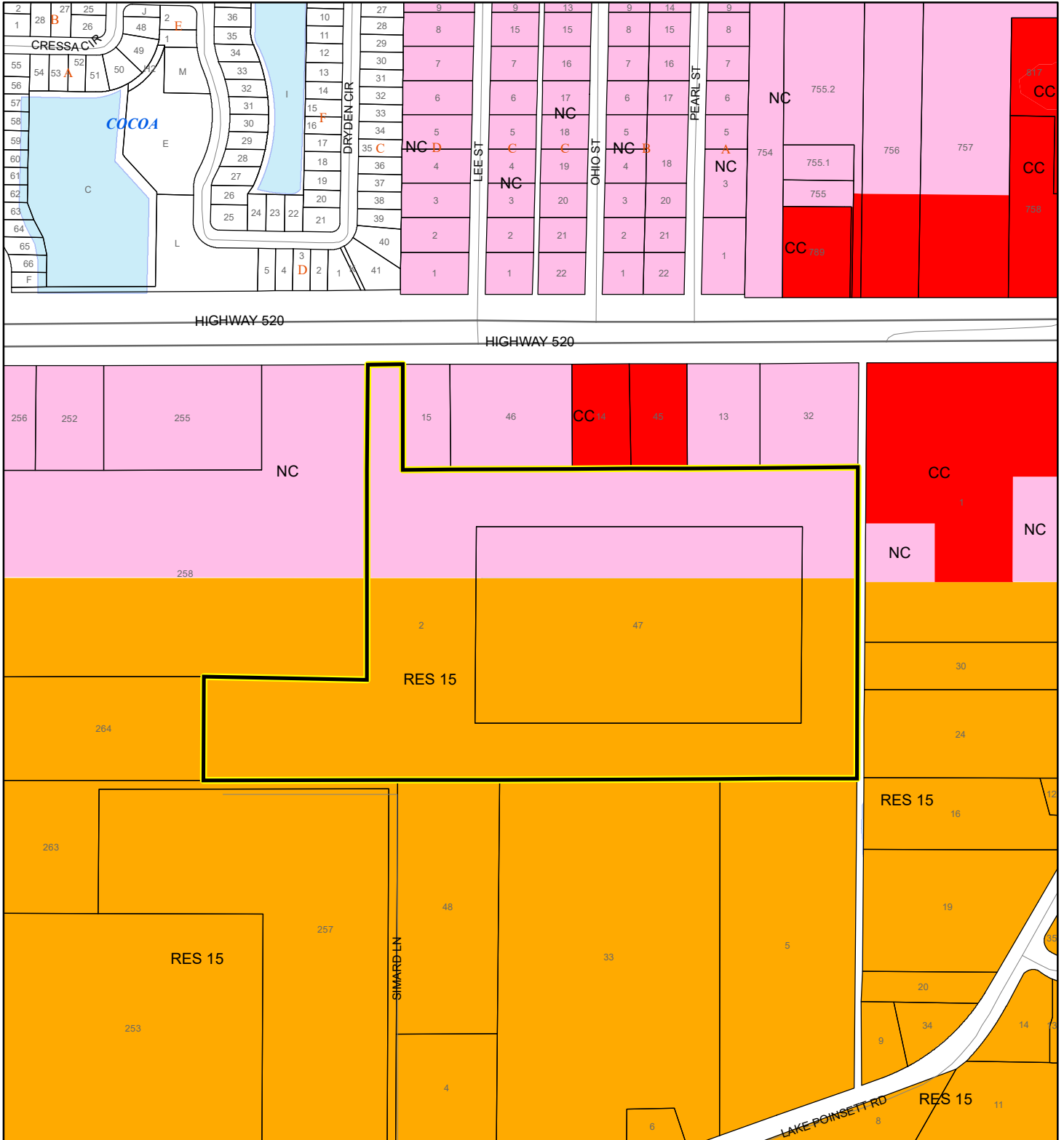
This map was compiled from recorded documents and does not reflect an actual survey. The Brevard County Board of County Commissioners does not assume responsibility for errors or omissions hereon.

Produced by BoCC - GIS Date: 2/6/2026

FUTURE LAND USE MAP

HQW HOMEOWNERS ASSOCIATION INC

26Z00005



1:4,800 or 1 inch = 400 feet

- Subject Property
- Parcels

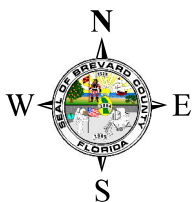
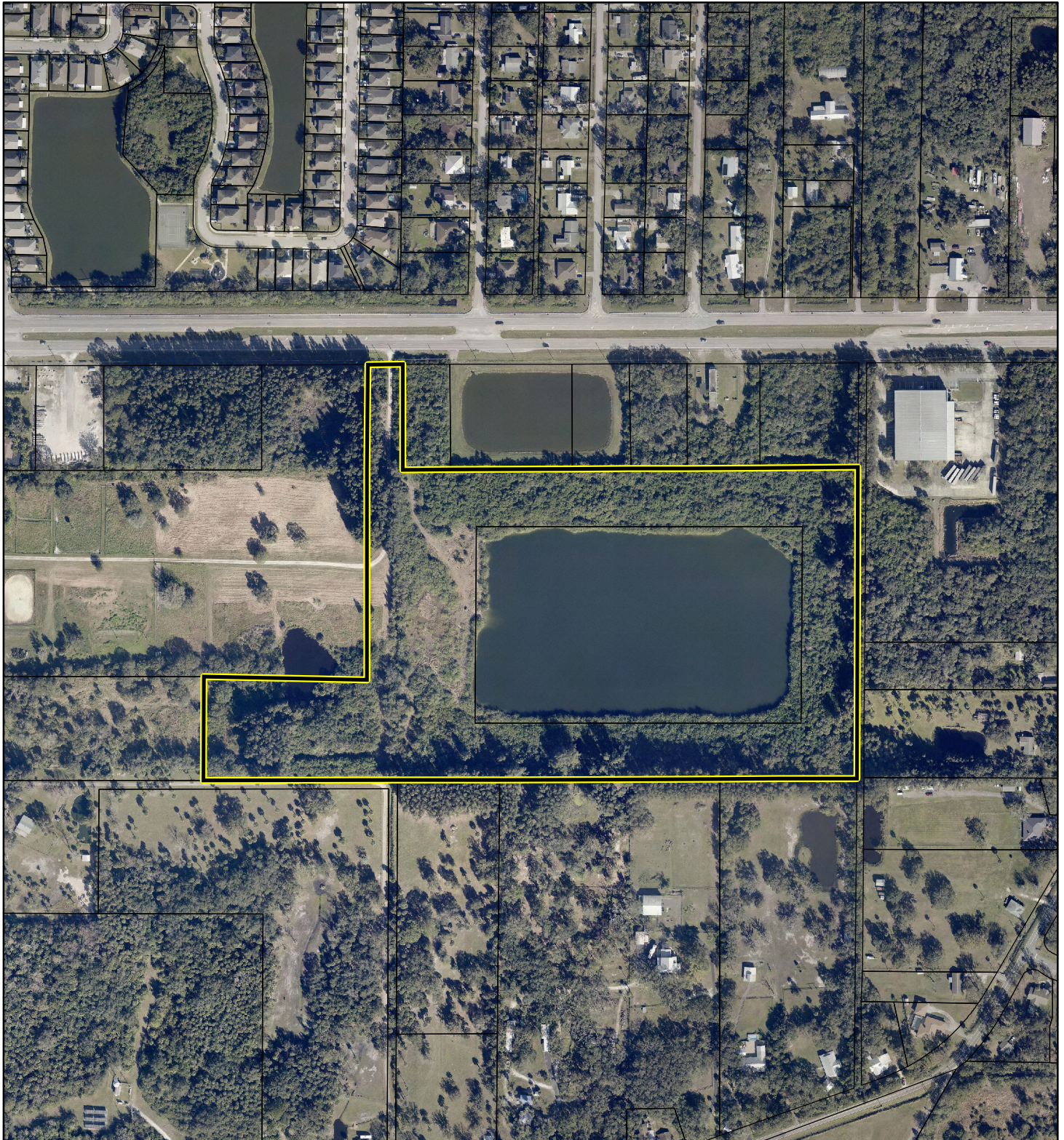
This map was compiled from recorded documents and does not reflect an actual survey. The Brevard County Board of County Commissioners does not assume responsibility for errors or omissions hereon.

Produced by BoCC - GIS Date: 2/6/2026

AERIAL MAP

HQW HOMEOWNERS ASSOCIATION INC

26Z00005




1:4,800 or 1 inch = 400 feet

PHOTO YEAR: 2025

This map was compiled from recorded documents and does not reflect an actual survey. The Brevard County Board of County Commissioners does not assume responsibility for errors or omissions hereon.

Produced by BoCC - GIS Date: 2/6/2026

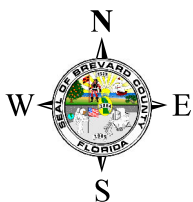
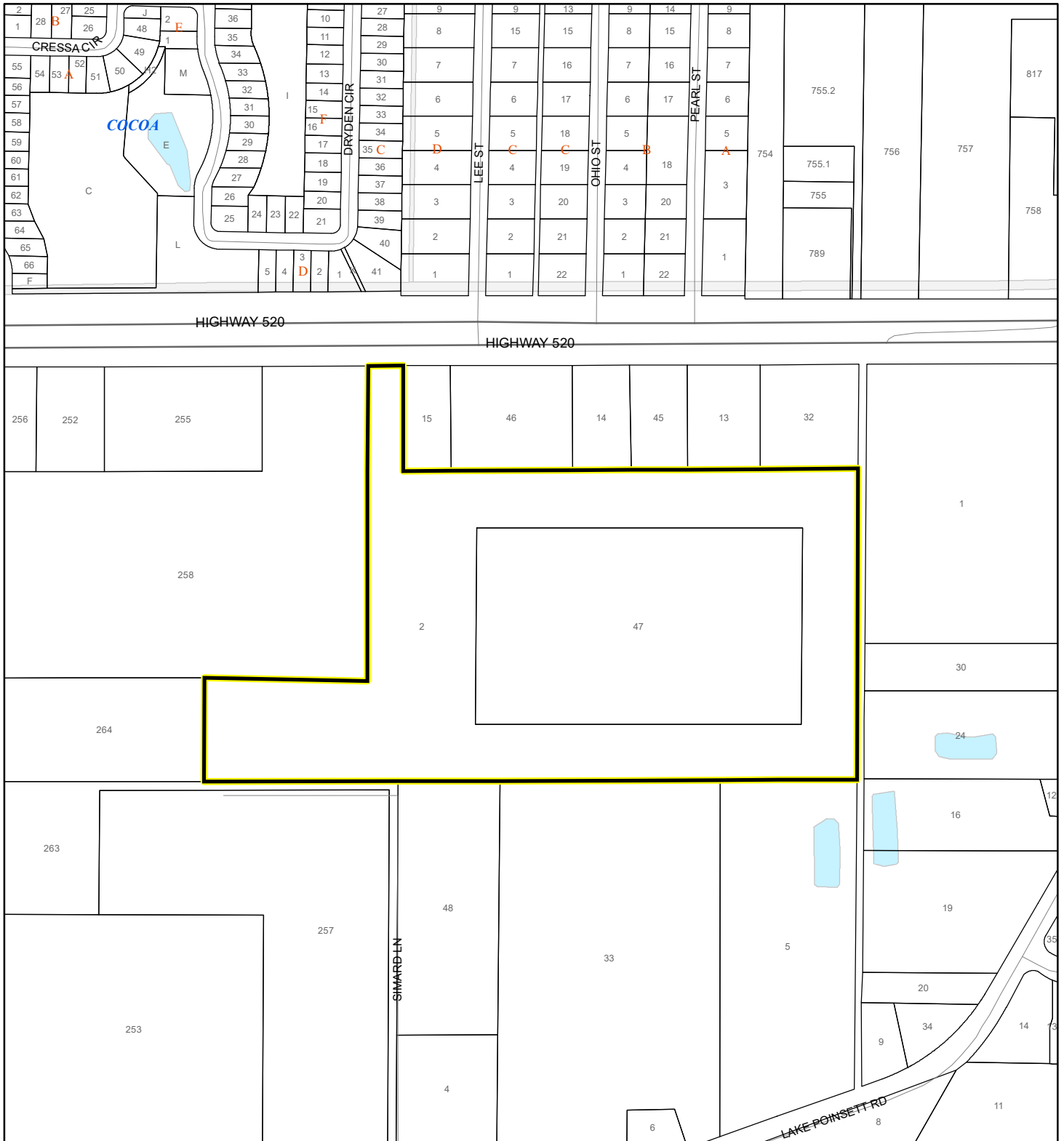
 Subject Property

 Parcels

NWI WETLANDS MAP

HQW HOMEOWNERS ASSOCIATION INC

26Z00005



1:4,800 or 1 inch = 400 feet

This map was compiled from recorded documents and does not reflect an actual survey. The Brevard County Board of County Commissioners does not assume responsibility for errors or omissions hereon.

Produced by BoCC - GIS Date: 2/6/2026

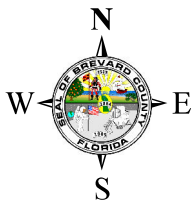
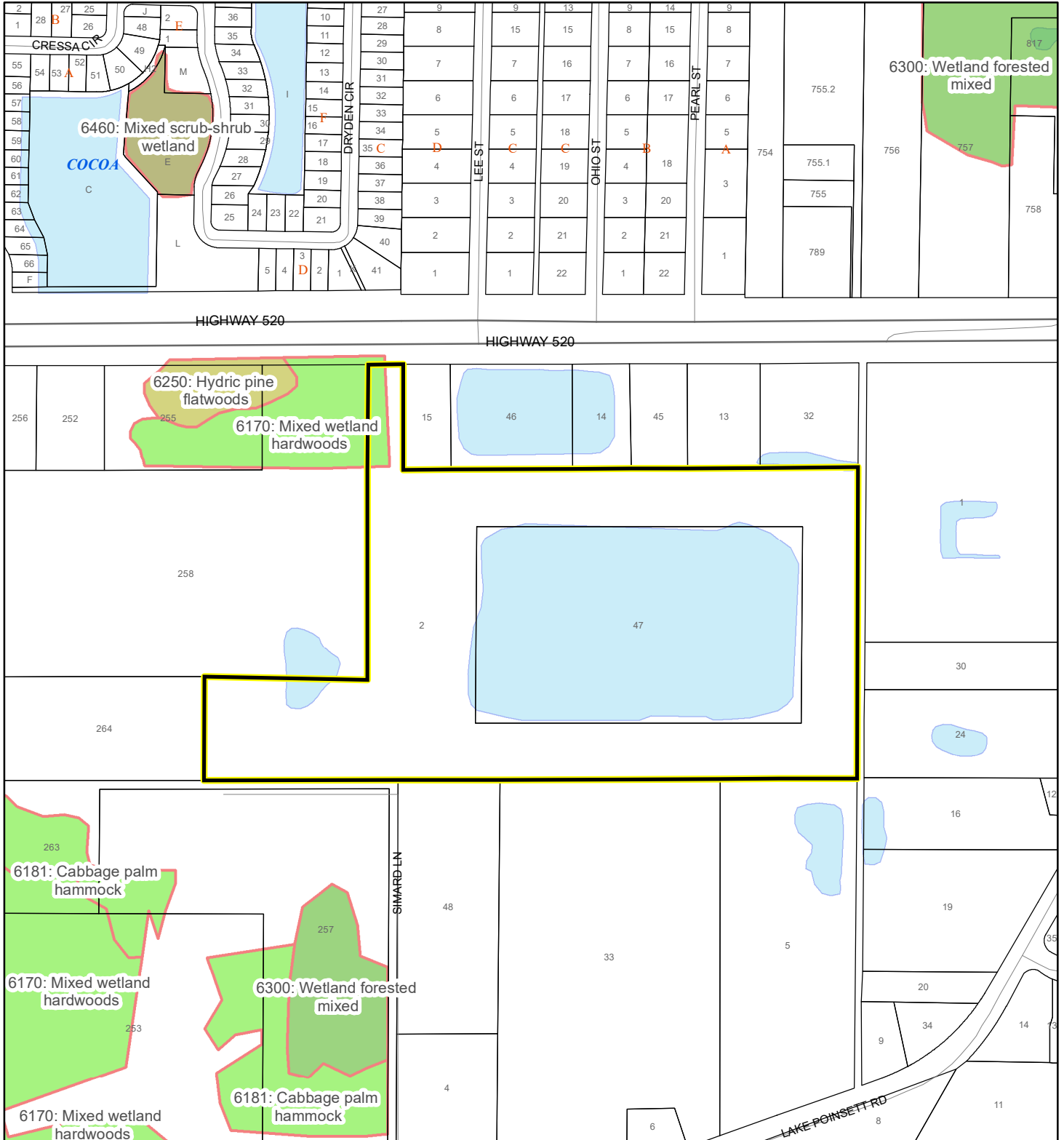
National Wetlands Inventory (NWI)

- Estuarine and Marine Deepwater
- Estuarine and Marine Wetland
- Freshwater Emergent Wetland
- Freshwater Forested/Shrub Wetland
- Freshwater Pond
- Lake
- Other
- Riverine
- Subject Property
- Parcels

SJRWMD FLUCCS WETLANDS - 6000 Series MAP

HQW HOMEOWNERS ASSOCIATION INC

26Z00005



1:4,800 or 1 inch = 400 feet

This map was compiled from recorded documents and does not reflect an actual survey. The Brevard County Board of County Commissioners does not assume responsibility for errors or omissions hereon.

Produced by BoCC - GIS Date: 2/6/2026

SJRWMD FLUCCS WETLANDS

- Wetland Hardwood Forests - Series 6100
- Wetland Coniferous Forest - Series 6200
- Wetland Forested Mixed - Series 6300
- Vegetated Non-Forested Wetlands - Series 6400
- Non-Vegetated Wetland - Series 6500

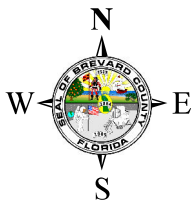
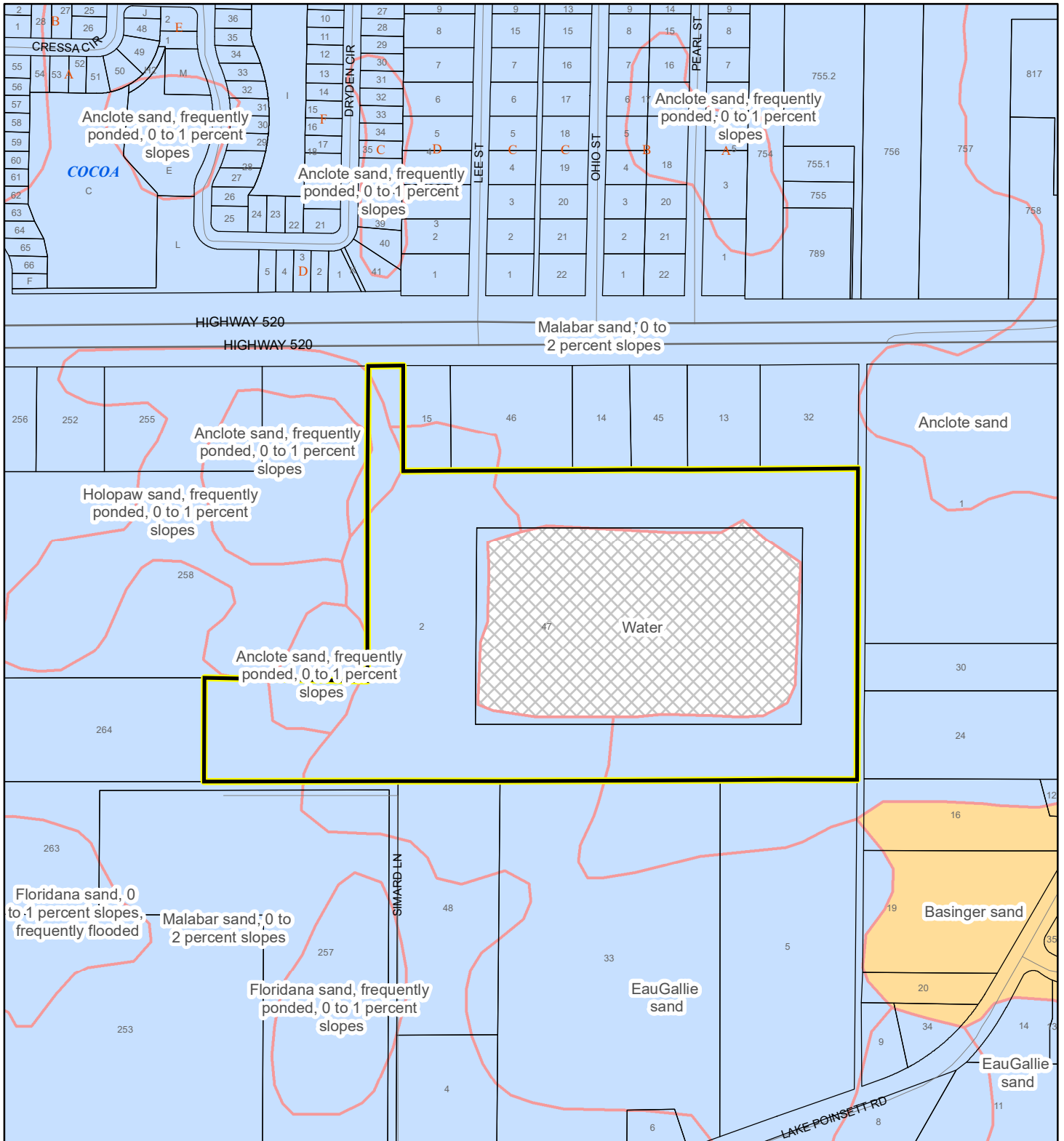
Subject Property

Parcels

USDA SCSSS SOILS MAP

HQW HOMEOWNERS ASSOCIATION INC

26Z00005



1:4,800 or 1 inch = 400 feet

This map was compiled from recorded documents and does not reflect an actual survey. The Brevard County Board of County Commissioners does not assume responsibility for errors or omissions hereon.

Produced by BoCC - GIS Date: 2/6/2026

USDA SCSSS Soils

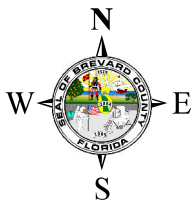
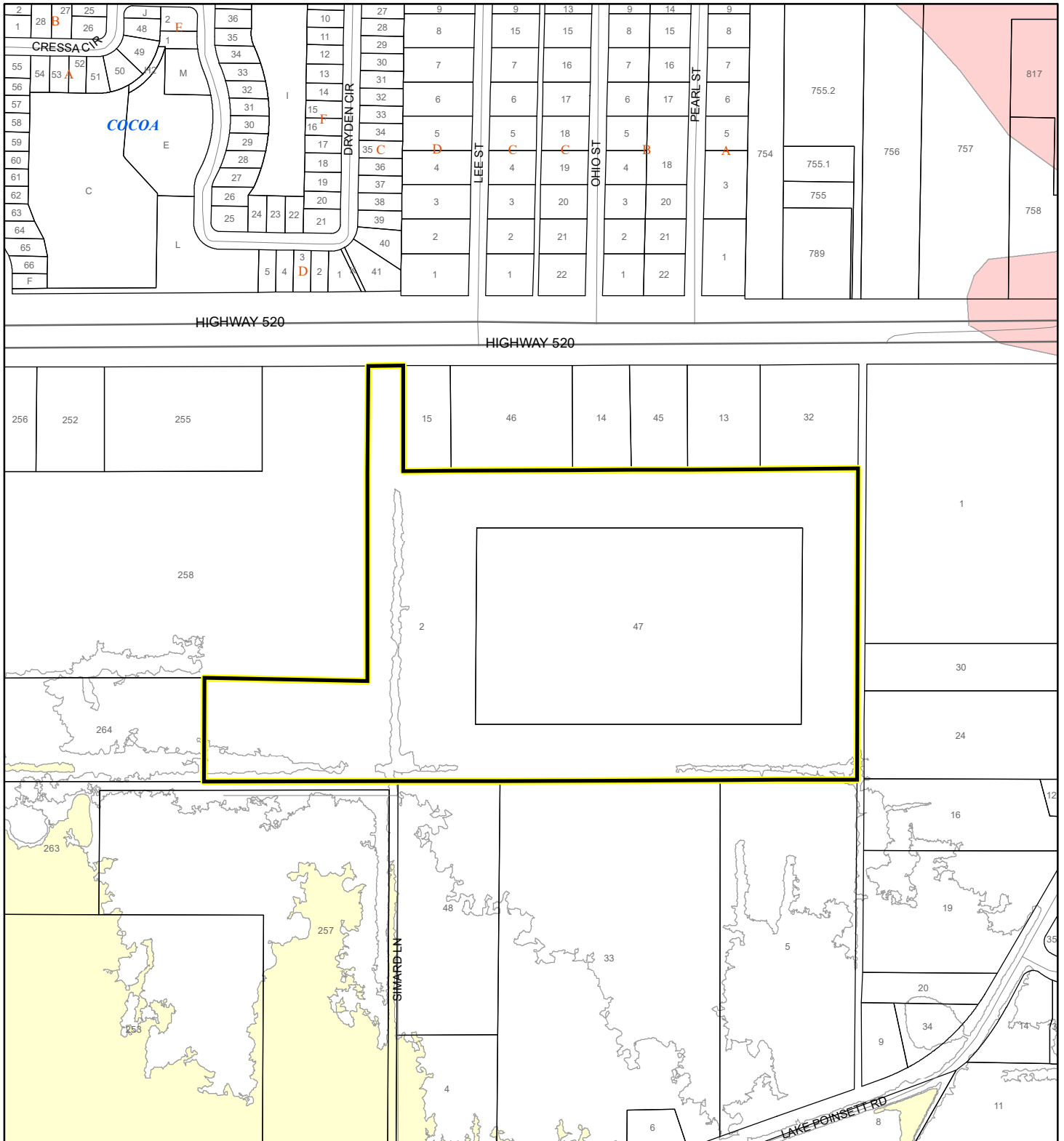
- Aquifer and Hydric
- Aquifer
- Hydric
- None

- Subject Property
- Parcels

FEMA FLOOD ZONES MAP

HQW HOMEOWNERS ASSOCIATION INC

26Z00005



1:4,800 or 1 inch = 400 feet

This map was compiled from recorded documents and does not reflect an actual survey. The Brevard County Board of County Commissioners does not assume responsibility for errors or omissions hereon.

Produced by BoCC - GIS Date: 2/6/2026

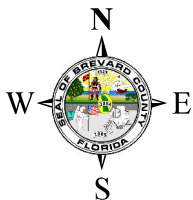
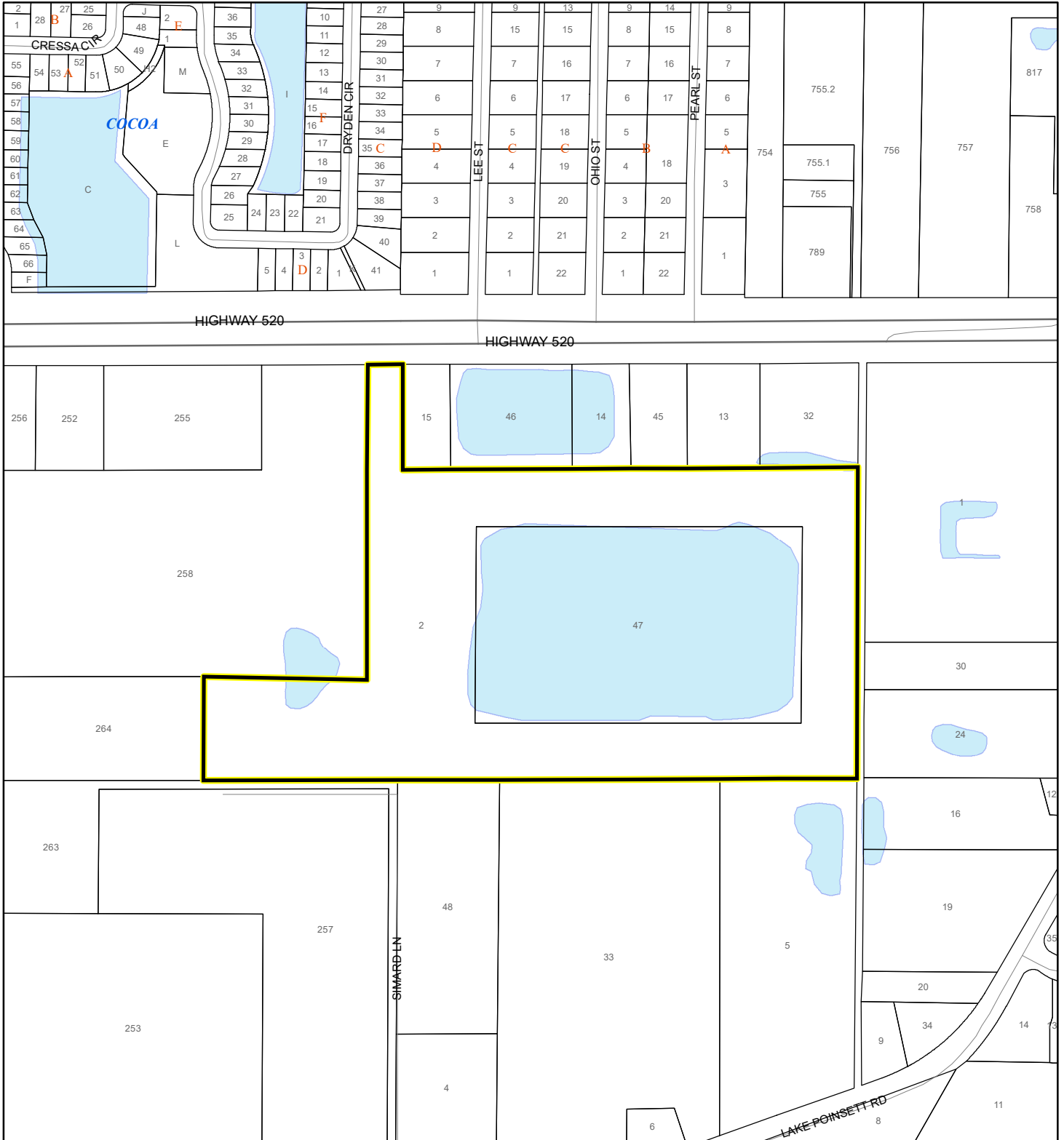
FEMA Flood Zones

- | | | |
|------------------|------------|---|
| A | AO | X |
| AE | Open Water | |
| AH | VE | |
| Subject Property | Parcels | |

COASTAL HIGH HAZARD AREA MAP

HQW HOMEOWNERS ASSOCIATION INC

26Z00005



1:4,800 or 1 inch = 400 feet


This map was compiled from recorded documents and does not reflect an actual survey. The Brevard County Board of County Commissioners does not assume responsibility for errors or omissions hereon.

Produced by BoCC - GIS Date: 2/6/2026

 Subject Property

 Parcels

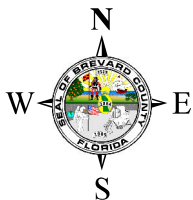
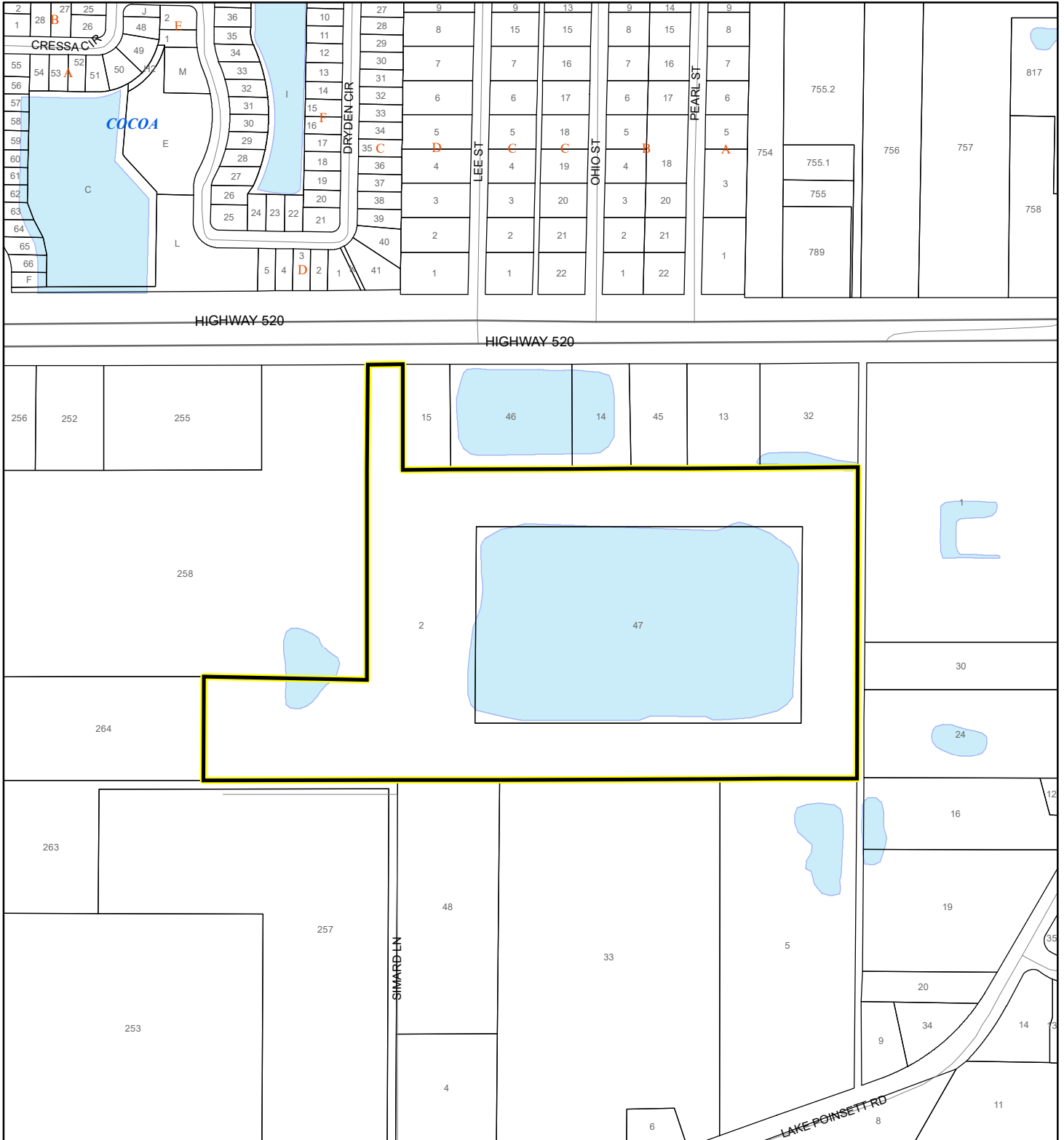
Coastal High Hazard Area

 SurgeZoneCat1

INDIAN RIVER LAGOON SEPTIC OVERLAY MAP

HQW HOMEOWNERS ASSOCIATION INC

26Z00005



1:4,800 or 1 inch = 400 feet

This map was compiled from recorded documents and does not reflect an actual survey. The Brevard County Board of County Commissioners does not assume responsibility for errors or omissions hereon.

Produced by BoCC - GIS Date: 2/6/2026

 Subject Property

 Parcels

Septic Overlay

 40 Meters

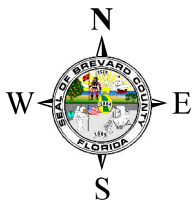
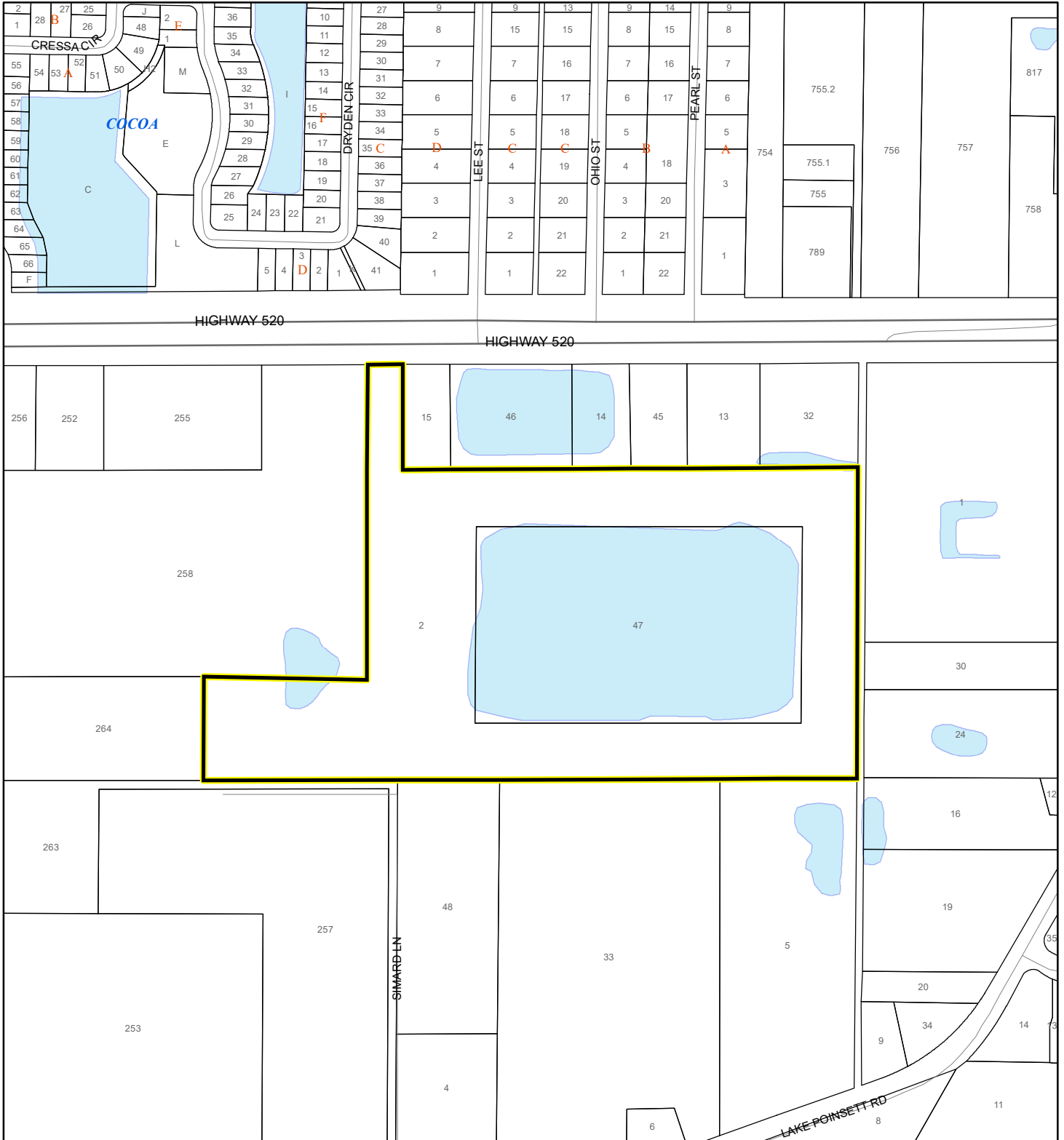
 60 Meters

 All Distances

EAGLE NESTS MAP

HQW HOMEOWNERS ASSOCIATION INC

26Z00005



1:4,800 or 1 inch = 400 feet

 Subject Property

 Parcels

 Eagle Nests
FWS

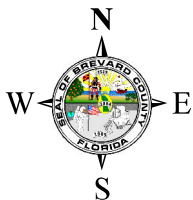
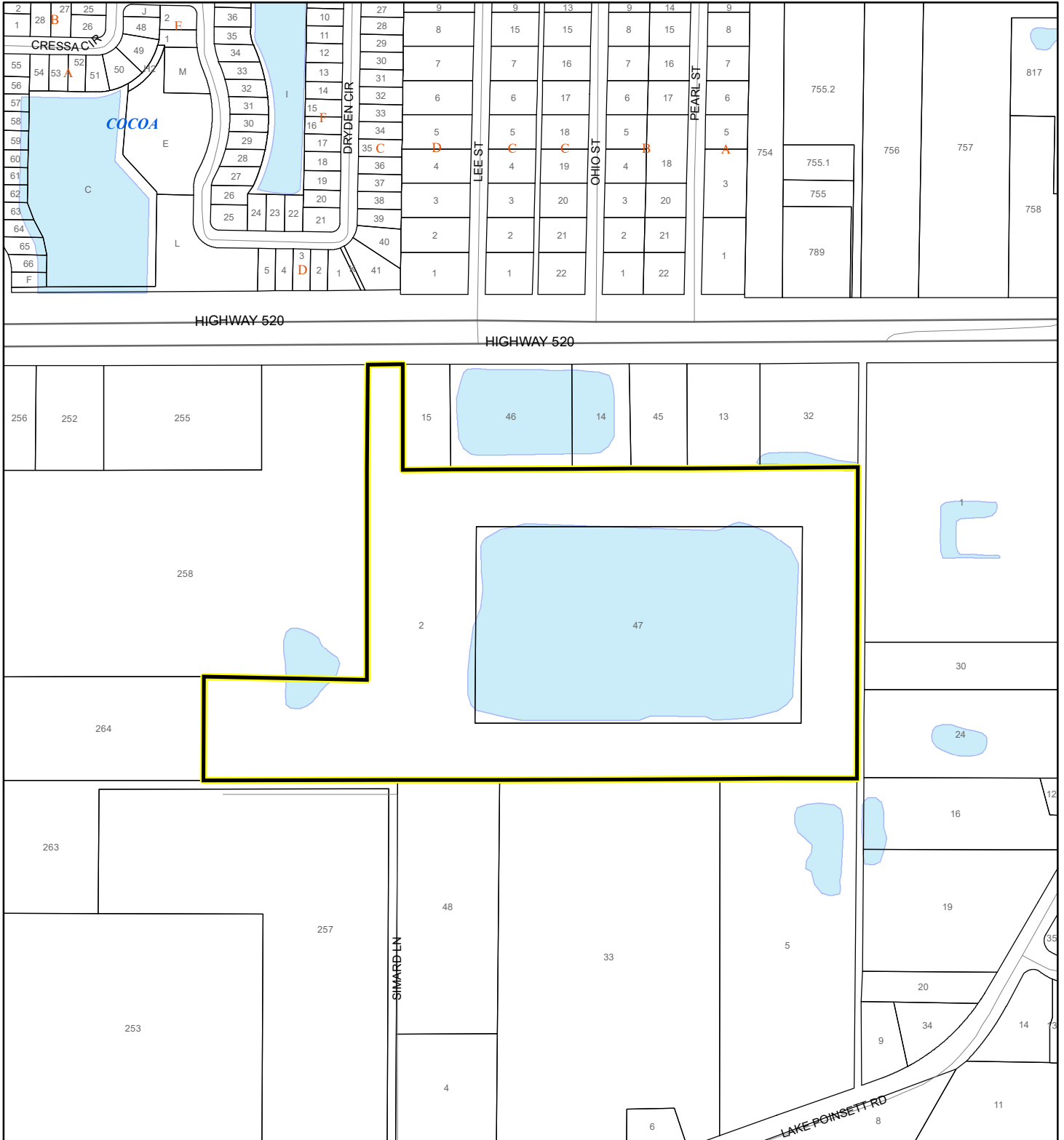
This map was compiled from recorded documents and does not reflect an actual survey. The Brevard County Board of County Commissioners does not assume responsibility for errors or omissions hereon.

Produced by BoCC - GIS Date: 2/6/2026

SCRUB JAY OCCUPANCY MAP

HQW HOMEOWNERS ASSOCIATION INC


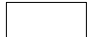

26Z00005



1:4,800 or 1 inch = 400 feet

This map was compiled from recorded documents and does not reflect an actual survey. The Brevard County Board of County Commissioners does not assume responsibility for errors or omissions hereon.

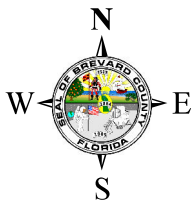
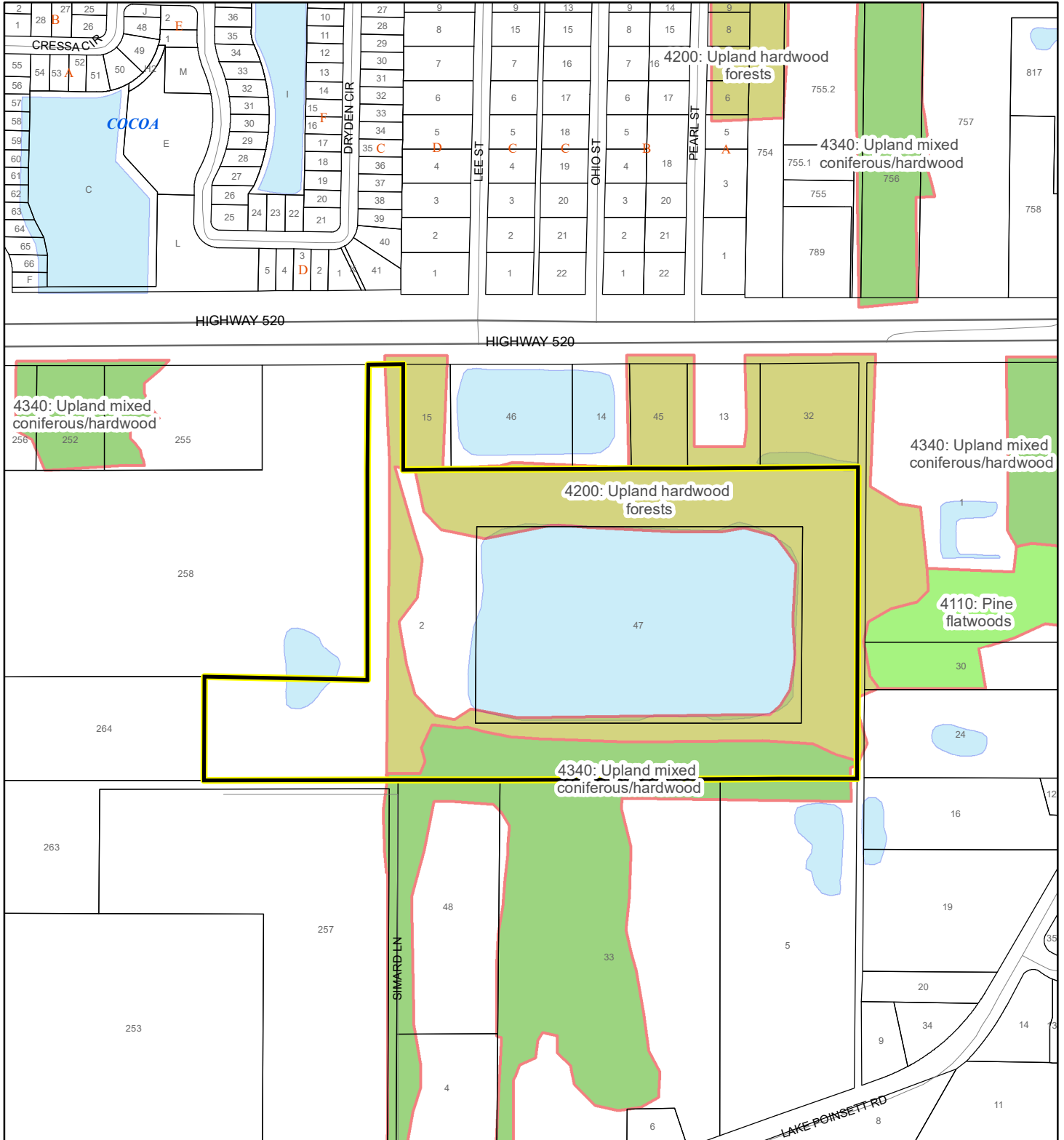
Produced by BoCC - GIS Date: 2/6/2026

-  Subject Property
-  Parcels
-  Scrub Jay Occupancy

SJRWMD FLUCCS UPLAND FORESTS - 4000 Series MAP

HQW HOMEOWNERS ASSOCIATION INC

26Z00005



1:4,800 or 1 inch = 400 feet

This map was compiled from recorded documents and does not reflect an actual survey. The Brevard County Board of County Commissioners does not assume responsibility for errors or omissions hereon.

Produced by BoCC - GIS Date: 2/6/2026

SJRWMD FLUCCS Upland Forests

- Upland Coniferous Forest - 4100 Series
- Upland Hardwood Forest - 4200 Series
- Upland Mixed Forest - 4300 Series
- Tree Plantations - 4400 Series

Subject Property

Parcels