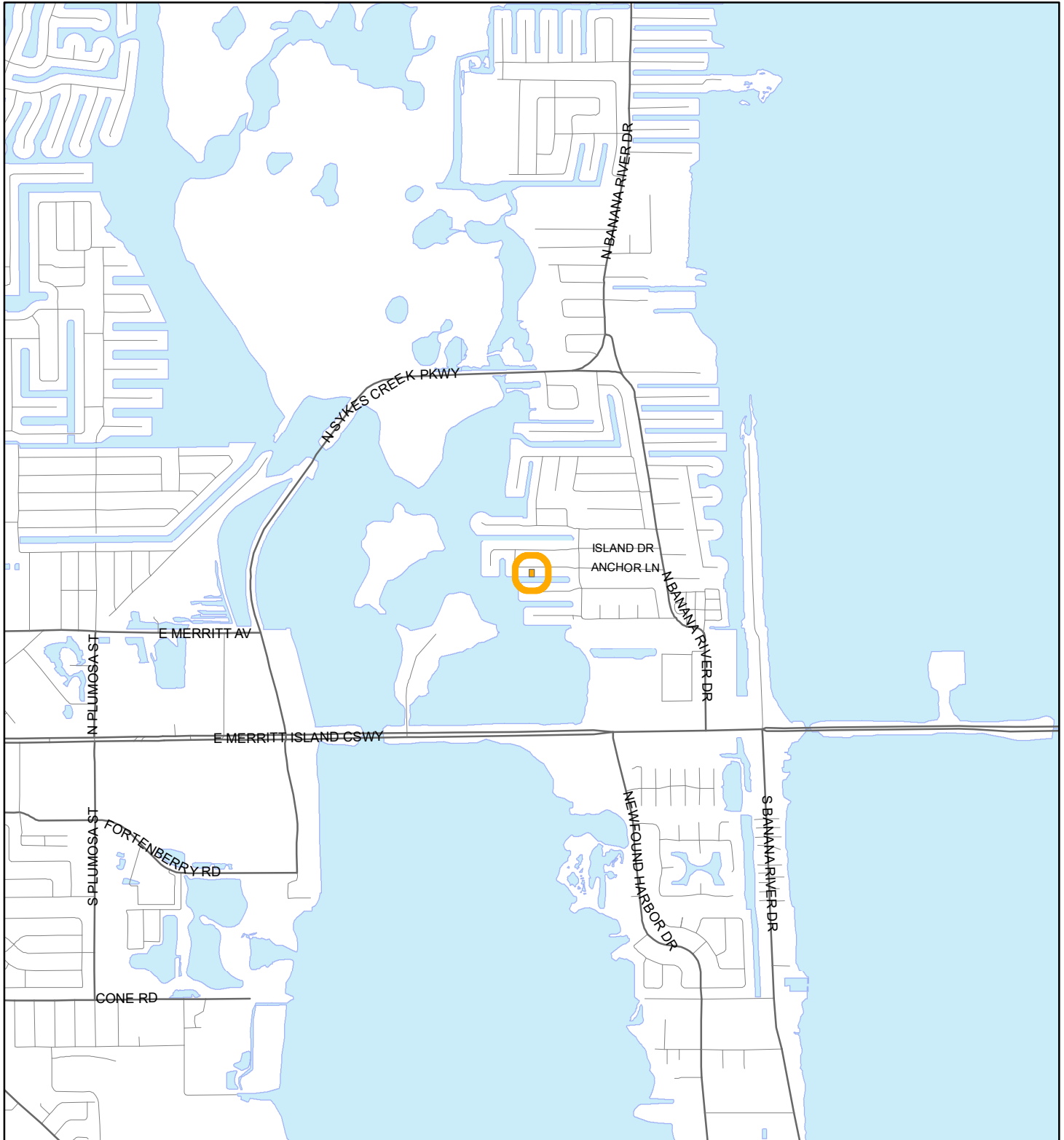


LOCATION MAP

PHILLIPS, THOMAS EARL

24V00008



1:24,000 or 1 inch = 2,000 feet

Buffer Distance: 200 feet

This map was compiled from recorded documents and does not reflect an actual survey. The Brevard County Board of County Commissioners does not assume responsibility for errors or omissions hereon.

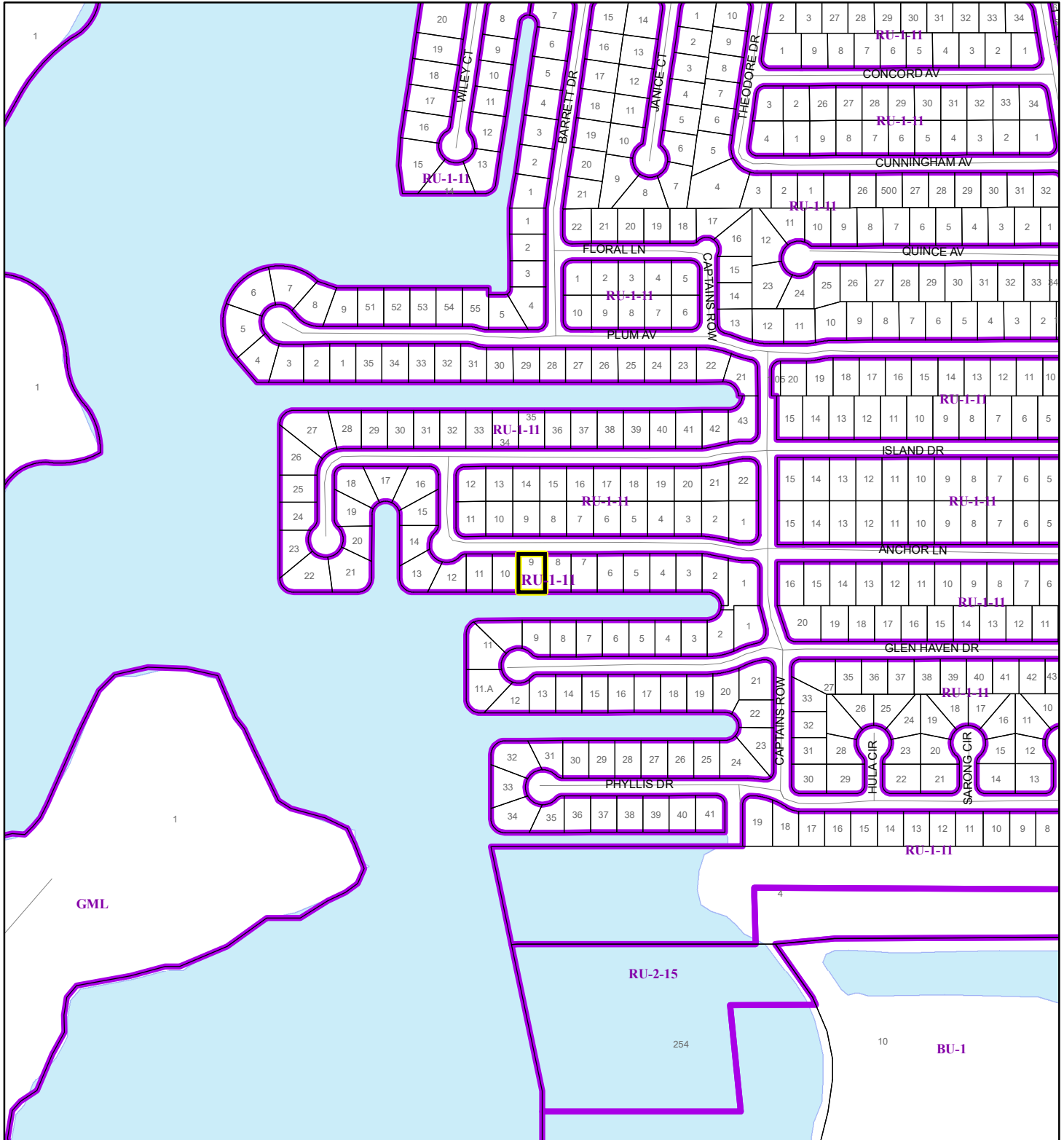
Produced by BoCC - GIS Date: 2/29/2024

Buffer
Subject Property

ZONING MAP

PHILLIPS, THOMAS EARL

24V00008



1:4,800 or 1 inch = 400 feet

This map was compiled from recorded documents and does not reflect an actual survey. The Brevard County Board of County Commissioners does not assume responsibility for errors or omissions hereon.

Produced by BoCC - GIS Date: 2/29/2024

Subject Property

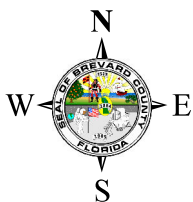
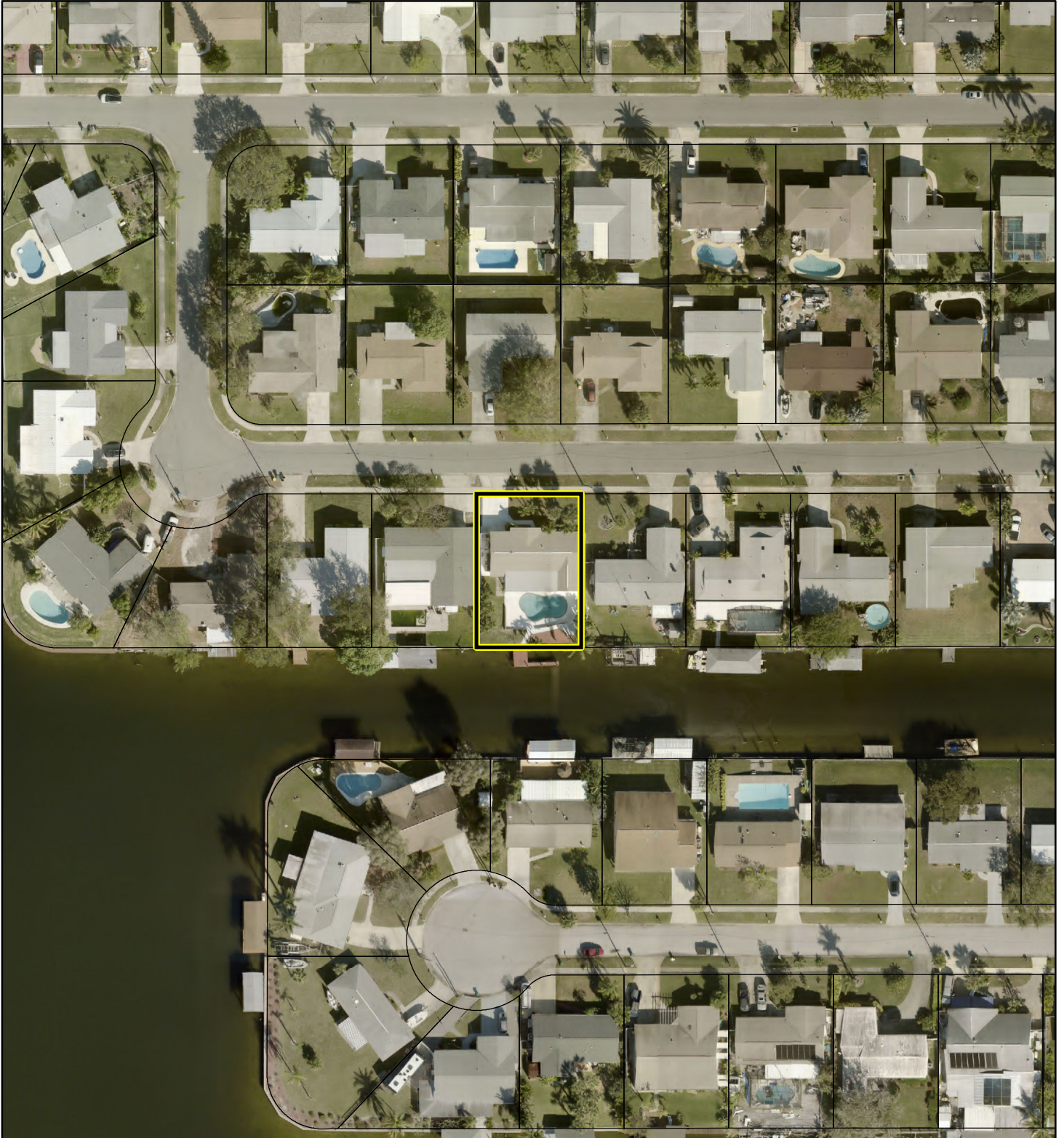
Parcels

Zoning

AERIAL MAP

PHILLIPS, THOMAS EARL

24V00008




1:1,200 or 1 inch = 100 feet

PHOTO YEAR: 2023

This map was compiled from recorded documents and does not reflect an actual survey. The Brevard County Board of County Commissioners does not assume responsibility for errors or omissions hereon.

Produced by BoCC - GIS Date: 2/29/2024

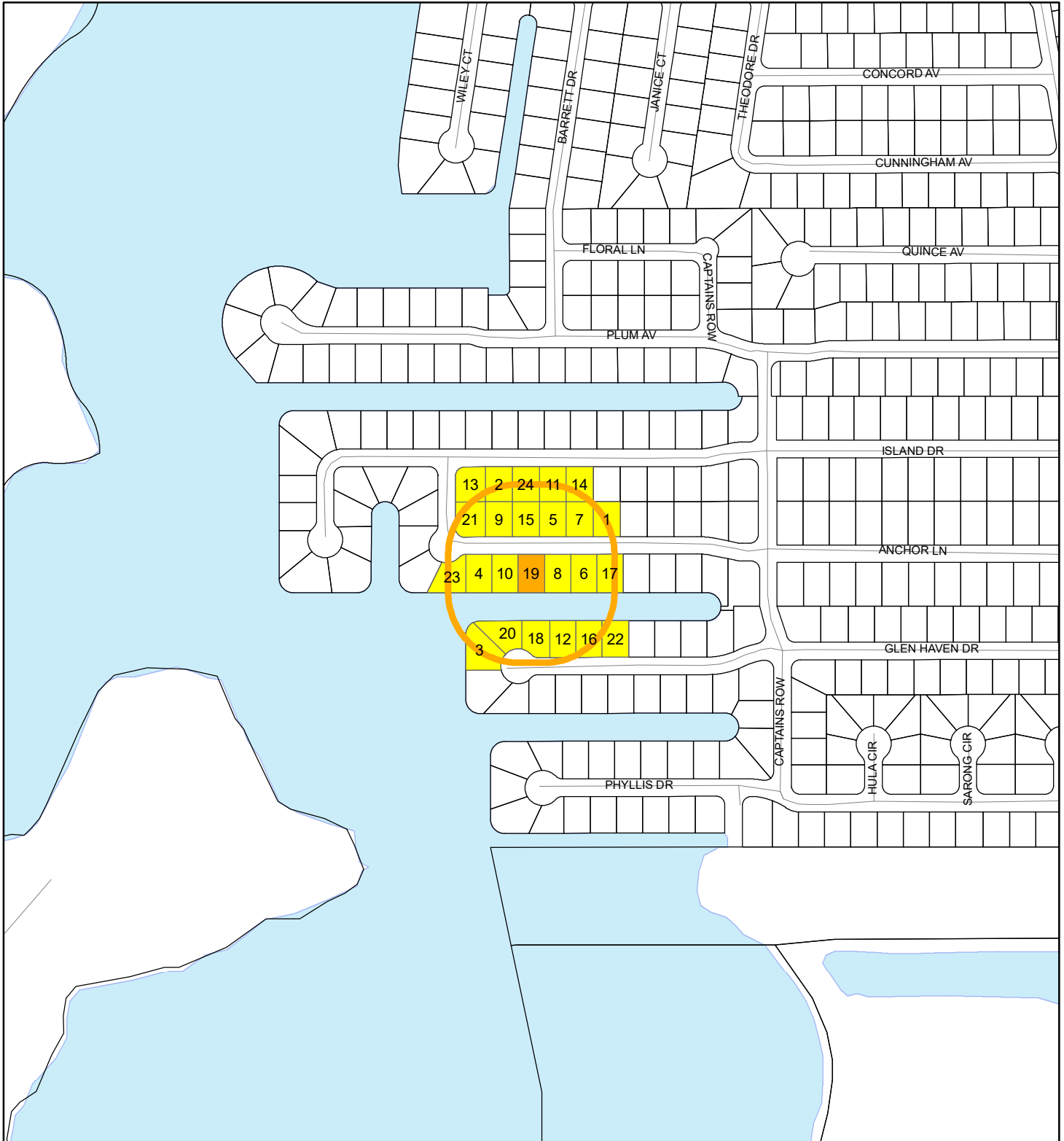
 Subject Property

 Parcels

RADIUS MAP

PHILLIPS, THOMAS EARL

24V00008



1:4,800 or 1 inch = 400 feet

Buffer Distance: 200 feet

This map was compiled from recorded documents and does not reflect an actual survey. The Brevard County Board of County Commissioners does not assume responsibility for errors or omissions hereon.

Produced by BoCC - GIS Date: 2/29/2024

- Buffer
- Subject Property
- Notify Property
- Parcels